



**Monitoring of
Project Construction
and
Licensee Requirements
205 CMR 135**

**Quarterly Report
as of
December 31, 2014**





Monitoring of Project Construction and Licensee Requirements Quarterly Report as of 12-31-14

Table of Contents

Project Schedules and Reporting	205 CMR 135.2 Reference	Appendix Reference
Updated Guidelines	1	1
Project Schedule	2(a)(c).....	2
Affirmative Action Program	3	3
Project Schedule Changes (if applicable)	4	4
Quarterly Status Report		
Cost of Construction	5(a)	5
Capitalization of Gaming License	5(b)	5
Design & Construction Contracts	5(c)	6
Status of Work Completed	5(d)	7
Work Force Statistics	5(e)	8
Minority Contracts	5(f)	9
Permits	6	10
Organized Labor Letter	7	11
Operational Affirmative Action Plan.....	8	12

APPENDIX 1

Plainridge Park Casino Quarterly Report to MGC Updated Guidelines As of December 31, 2014

Reference 205 CMR 135.02 – (1)

Updates received during the quarter ended December 31, 2014 are as follows:

- 205 CMR 122: DRAFT Amendments – Capital Investments
(Public Hearing Held October 7, 2014)
- 205 CMR 134: EMERGENCY Amendments – Licensing and Registration
(Amendments passed by emergency November 20, 2014)
- 205 CMR 149: EMERGENCY - Race Horse Development Fund
(Enacted by emergency November 20, 2014)

Received draft / comment period open for the following:

- 205 CMR 14: EMERGENCY - Supplemental Licensure Procedures
(Comment period ends January 19, 2015)
- 205 CMR 134: EMERGENCY Amendments – Licensing and Registration
(Comment period ends January 19, 2015)
- 205 CMR 138: DRAFT - Uniform Standards of Accounting Procedures and Internal Controls
(Comment period ends January 19, 2015)
- 205 CMR 146: DRAFT - Gaming Equipment
(Comment period ends January 9, 2015)
- 205 CMR 149: EMERGENCY - Race Horse Development Fund
(Comment period ends January 19, 2015)

APPENDIX 2

Plainridge Park Casino Quarterly Report to MGC Project Schedule As of December 31, 2014

Reference 205 CMR 135.02 – (2)(a)(c)

Construction Activities

- Project schedule (two pages attached) was approved by MGC during meeting of July 10, 2014. The project is still on track for a June 2015 completion.
- Current construction progress schedule update included in Appendix 4.

Non-Construction Activities

- Also attached is the Plainridge Park Casino Non-Construction Activities Schedule updated January 14, 2015. Various items identified on the schedule are under evaluation. SG&R and MGC are currently in communication to get dates in line with current activities.



**PENN NATIONAL
GAMING, INC.**

PLAINRIDGE PARK CASINO NON-CONSTRUCTION ACTIVITY PROJECT SCHEDULE
EXTERNAL INTERFACES

Activity ID	Activity Name	Rem. Dur.	%	Start	Finish	Total Float
Plainridge Park Casino Project Schedule - DD-05.16.14		584		03-Mar-14 A	12-Sep-16	0
Non-Construction Activity Schedule (Activities)		584		03-Mar-14 A	12-Sep-16	0
SG&R Procurement		395		03-Mar-14 A	10-Dec-15	189
PPC-NON/CONSTR-0020	SG&R - Provide Plans For Contracting With Local Business Owners (Statute Check List # 8)	11	0%	03-Mar-14 A	02-Jun-14	573
PPC-NON/CONSTR-0310	SG&R - Slot Machine Procurement & Manufacturing	102	0%	01-Oct-14*	27-Feb-15	0
PPC-NON/CONSTR-0410	SG&R - Slot Machine Delivery & Installation	41	0%	01-Apr-15*	29-May-15	0
PPC-NON/CONSTR-0040	SG&R - Design & Construct To LEED Gold Certification	0	0%		03-Jul-15	189
PPC-NON/CONSTR-0050	SG&R - Apply To USGBC For LEED Gold Certification	30	0%	06-Jul-15	14-Aug-15	189
PPC-NON/CONSTR-0030	SG&R - Provide LEED Certification To MGC (Statute Check-List # 12)	80	0%	17-Aug-15	10-Dec-15	189
Hosting & Surroundings Communities		584		03-Mar-14 A	12-Sep-16	0
PPC-NON/CONSTR-0080	SG&R - Identify Infrastructure Costs + Commit To Mitigation Plan (Statute C.L. # 23)	83	0%	03-Mar-14 A	12-Sep-14	196
PPC-NON/CONSTR-0090	SG&R - Implement Measures To Address Problem Gaming (Statute C.L. # 23)	251	0%	03-Mar-14 A	15-May-15	333
PPC-NON/CONSTR-0100	SG&R - Conduct Baseline Studies (License # 9 Other)	63	0%	02-Mar-15*	29-May-15	0
PPC-NON/CONSTR-0110	SG&R - Traffic Related Baseline Studies (RFA # 2)	63	0%	02-Mar-15	29-May-15	324
PPC-NON/CONSTR-0120	SG&R - Conduct Jobfairs (SCA Foxboro, Mansfield, North Attleboro, Wrentham)	409	0%	03-Mar-14 A	31-Dec-15	175
PPC-NON/CONSTR-0370	SG&R - Monitor & Assess Initial Impacts To Community (Starting Post Opening Day)	254	0%	06-Jul-15	08-Jul-16	0
PPC-NON/CONSTR-0380	SG&R - Prepare Initial Reports On Post Opening Monitoring	45	0%	11-Jul-16	12-Sep-16	0
Regulatory Approvals		260		03-Mar-14 A	29-May-15	324
PPC-NON/CONSTR-0350	MGC - Approve Mass. Community College Training Plans (License # 12)	0	0%		15-Jul-14*	0
PPC-NON/CONSTR-0150	MGC - Finalize & Approve Gaming Office Requirements (RFA # 2)	51	0%	19-Jun-14*	29-Aug-14	0
PPC-NON/CONSTR-0260	SG&R - Submit Exterior Design Plans For MGC Approval (FDC # 9)	34	0%	15-Jul-14*	29-Aug-14	0
PPC-NON/CONSTR-0270	SG&R - Submit Floor Plan For MGC Approval (FDC # 9)	34	0%	15-Jul-14*	29-Aug-14	0
PPC-NON/CONSTR-0400	SG&R - Submit Required Approvals List & MGC Approval (Summary Item # 25)	33	0%	16-Jul-14*	29-Aug-14	0
PPC-NON/CONSTR-0170	MGC - Develop & Issue Surveillance System Specifications	88	0%	03-Mar-14 A	19-Sep-14	458
PPC-NON/CONSTR-0240	MGC - Issue Free Play Standards (License # 26)	65	0%	19-Jun-14*	19-Sep-14	0
PPC-NON/CONSTR-0290	MGC - Issue State Slot Monitoring System Requirements	65	0%	19-Jun-14*	19-Sep-14	0
PPC-NON/CONSTR-0010	MGC - Provide Regulation / Full Descriptions Of Internal Controls (Statute Check-List # 4)	95	0%	03-Mar-14 A	30-Sep-14	406
PPC-NON/CONSTR-0280	MGC - Approve Slot Machine Requirements	64	0%	01-Jul-14*	30-Sep-14	0
PPC-NON/CONSTR-0320	MGC - License Slot Machine Vendors	64	0%	01-Jul-14*	30-Sep-14	0
PPC-NON/CONSTR-0200	SG&R - Submit Slot Monitoring System For MGC Approval	20	0%	19-Sep-14*	17-Oct-14	0
PPC-NON/CONSTR-0180	SG&R - Submit Surveillance System Plan For MGC Approval (RFA C.L. # 5 & 6)	38	0%	22-Sep-14	14-Nov-14	458
PPC-NON/CONSTR-0060	SG&R - File & Submit Internal Controls To MGC	51	0%	01-Oct-14	15-Dec-14	406
PPC-NON/CONSTR-0160	MGC - Approve Internal Controls	32	0%	16-Dec-14	30-Jan-15	406
PPC-NON/CONSTR-0220	SG&R - Submit Slot Machine Testing Program For MGC Approval	22	0%	15-Jan-15*	13-Feb-15	0
PPC-NON/CONSTR-0390	SG&R - Submit "12.15.14" Bank Secrecy Act Plan To MGC For Approval "02.27.15"	52	0%	15-Dec-14*	27-Feb-15	0
PPC-NON/CONSTR-0140	MGC - Develop & Provide On Site Requirements For Inspection For Pre-Opening Activities (RF...	22	0%	02-Mar-15*	31-Mar-15	0
PPC-NON/CONSTR-0070	SG&R - Submit Responsible Gaming Plan & MGC Approval (FDC # 20)	251	0%	03-Mar-14 A	15-May-15	333
PPC-NON/CONSTR-0130	MGC - Develop & Provide Process & Road Map Requirements For On-Site Operating License I...	260	6.81%	03-Mar-14 A	29-May-15	324
PPC-NON/CONSTR-0190	MGC - On-Site Review & Approval Process Of Surveillance System	54	0%	13-Mar-15*	29-May-15	0
PPC-NON/CONSTR-0230	MGC - Test & Approve Slot Monitoring System	41	0%	01-Apr-15*	29-May-15	0
Other Requirements		130		17-Oct-14	27-Apr-15	0
PPC-NON/CONSTR-0330	SG&R - Execute Amended Lottery Agreement (License # 10)	0	0%		17-Oct-14*	0
PPC-NON/CONSTR-0340	SG&R - Submit Plan Regarding Mass. Office Of Travel & Tourism (License #23)	0	0%		13-Feb-15*	0
PPC-NON/CONSTR-0360	SG&R - Apply For Or Amend Existing & Obtain Alcoholic Beverage License	70	0%	16-Jan-15*	27-Apr-15	0

Plainridge Park Casino - Non-Construction Activities Schedule

Updated: 1/14/2015

Activity ID	Activity Name	%	Start	Finish	Total Float
MGC Contractor Form					
PPC-EVENT1-OP-0050	SG&R Carpet Vendors MGC Form Completion and Signoff - Crossley	100%	05-Nov-14 A	10-Dec-14 A	
PPC-EVENT1-OP-0060	SG&R Lighting Vendors MGC Form Completion and Signoff - Arts Anvil	100%	05-Nov-14 A	10-Dec-14 A	
PPC-EVENT1-OP-0010	* SG&R Carpet Vendors MGC Form Completion and Signoff	60%	05-Nov-14 A	9-Jan-15	0
PPC-EVENT1-OP-0020	* SG&R Wallcovering Vendors MGC Form Completion and Signoff	60%	05-Nov-14 A	9-Jan-15	5
PPC-EVENT1-OP-0030	* SG&R Lighting Vendors MGC Form Completion and Signoff	60%	05-Nov-14 A	9-Jan-15	10
PPC-EVENT1-OP-0040	* SG&R Signage Vendors MGC Form Completion and Signoff	60%	05-Nov-14 A	9-Jan-15	4
SG&R Procurement					
SG&R - General Procurement and Delivery					
PPC-NON/CONSTR-0020	SG&R - Provide Plans For Contracting With Local Business Owners (Statute Check-List # 8)	100%	03-Mar-14 A	02-Jun-14 A	
PPC-NON/CONSTR-0210	SG&R - Provide Names of All Proposed Vendors of Gaming Equipment	100%	03-Mar-14 A	22-Sep-14 A	
PPC-NON/CONSTR-0250	SG&R - Surveillance Installation	0%	2-Feb-15	16-Mar-15	1
PPC-NON/CONSTR-0040	SG&R - Design & Construct To LEED Gold Certification	0%		30-Jun-15	144
PPC-NON/CONSTR-0050	SG&R - Apply To USGBC For LEED Gold Certification	0%	1-Jul-15	11-Aug-15	144
PPC-NON/CONSTR-0030	SG&R - Provide LEED Certification To MGC (Statute Check-List # 12)	0%	12-Aug-15	4-Feb-16	144
SG&R - Slot Machines Procurement and Delivery					
PPC-NON/CONSTR-0305	SG&R - Activate Security Cameras (Gaming Floor / Lobby Area) (6dc)	0%	7-Mar-15	24-Mar-15	24
PPC-NON/CONSTR-0310	* SG&R - Slot Machine Procurement & Manufacturing	20.27%	26-Jan-15	1-Apr-15	13
PPC-NON/CONSTR-0315	SG&R - Deliver & Install Slot Machine Bases (7dc)	0%	4-Apr-15	4-May-15	17
PPC-NON/CONSTR-0410	SG&R - Slot Machine Delivery & Installation	0%	24-Apr-15	5-Jun-15	0
PPC-NON/CONSTR-0415	SG&R - Slot Machine Start-Up & Check-Out	0%	28-Apr-15	9-Jun-15	0
PPC-NON/CONSTR-0425	SG&R/MGC - Slot Machine Certification	0%	10-Jun-15	23-Jun-15	0
Host & Surrounding Communities					
PPC-NON/CONSTR-0080	SG&R - Identify Infrastructure Costs + Commit To Mitigation Plan (Statute C.L. # 23) - Released Marois	100%	03-Mar-14 A	12-Nov-14 A	
PPC-NON/CONSTR-0120	SG&R - Conduct Jobfairs (SCA Foxboro, Mansfield, North Attleboro, Wrentham)	75%	03-Mar-14 A	26-Jun-15	
PPC-NON/CONSTR-0090	SG&R - Implement Measures To Address Problem Gaming (Statute C.L. # 23)	0%	16-Apr-15	15-May-15	26
PPC-NON/CONSTR-0100	SG&R - Conduct Baseline Studies (License # 9 Other)	0%	31-Mar-15	29-Jun-15	-1
PPC-NON/CONSTR-0110	SG&R - Traffic Related Baseline Studies (RFA # 2)	0%	31-Mar-15	29-Jun-15	-1
PPC-NON/CONSTR-0370	SG&R - Monitor & Assess Initial Impacts To Community (Starting Post Opening Day)	0%	1-Jul-15	5-Jul-16	0
PPC-NON/CONSTR-0380	SG&R - Prepare Initial Reports On Post Opening Monitoring	0%	6-Jul-16	30-Aug-16	0
Regulatory Approvals					
SG&R					
PPC-NON/CONSTR-0260	SG&R - Submit Exterior Design Plans For MGC Approval (FDC # 9)	100%	28-May-14 A	18-Jul-14 A	
PPC-NON/CONSTR-0270	SG&R - Submit Floor Plan For MGC Approval (FDC # 9)	100%	01-Jul-14 A	07-Aug-14 A	
PPC-NON/CONSTR-0400	SG&R - Submit Required Approvals List & MGC Approval (Summary Item # 25)	100%	03-Mar-14 A	29-Aug-14 A	
PPC-NON/CONSTR-0180	* SG&R - Submit Surveillance System Plan For MGC Approval (RFA C.L. # 5 & 6)	100%	22-Sep-14 A	31-Dec-14 A	
PPC-NON/CONSTR-0390	* SG&R - Submit "12.15.14" Bank Secrecy Act Plan To MGC For Approval "02.27.15"	85.71%	01-Oct-14 A	15-Jan-15	110
PPC-NON/CONSTR-0060	* SG&R - File & Submit Internal Controls To MGC	88.24%	01-Oct-14 A	15-Jan-15	78
PPC-NON/CONSTR-0070	SG&R - Submit Responsible Gaming Plan (FDC # 20)	40%	03-Mar-14 A	2-Feb-15	26
PPC-NON/CONSTR-0200	SG&R - Submit Slot Monitoring System For MGC Approval	40%	22-Sep-14 A	2-Feb-15	27
PPC-NON/CONSTR-0220	SG&R - Submit Slot Machine Testing Program For MGC Approval	0%	01-Oct-14 A	2-Mar-15	17
MGC Approvals					
PPC-NON/CONSTR-0350	MGC - Approve Mass. Community College Training Plans (License # 12)	100%	03-Mar-14 A	15-Jul-14 A	
PPC-NON/CONSTR-0150	MGC - Finalize & Approve Gaming Office Requirements (RFA # 2)	100%	03-Mar-14 A	07-Aug-14 A	
PPC-NON/CONSTR-0170	MGC - Develop & Issue Surveillance System Specifications	100%	03-Mar-14 A	19-Sep-14 A	
PPC-NON/CONSTR-0240	MGC - Issue Free Play Standards (License # 26)	100%	03-Mar-14 A	19-Sep-14 A	
PPC-NON/CONSTR-0290	MGC - Issue State Slot Monitoring System Requirements	100%	03-Mar-14 A	19-Sep-14 A	
PPC-NON/CONSTR-0010	MGC - Provide Regulation / Full Descriptions Of Internal Controls (Statute Check-List # 4)	100%	03-Mar-14 A	30-Sep-14 A	
PPC-NON/CONSTR-0280	MGC - Approve Slot Machine Requirements	100%	03-Mar-14 A	30-Sep-14 A	
PPC-NON/CONSTR-0320	* MGC - License Slot Machine Vendors	100%	03-Mar-14 A	23-Jan-15	13
PPC-NON/CONSTR-0710	* MGC - Approve Exterior Design (FDC #9)	100%	21-Jul-14 A	31-Dec-14 A	
PPC-NON/CONSTR-0720	* MGC - Approve Floor Plan For MGC Approval (FDC # 9)	0%	08-Aug-14 A	15-Jan-15	65
PPC-NON/CONSTR-0340	* MGC - Approve Surveillance System	19.05%	02-Jan-15 A	30-Jan-15	16
PPC-NON/CONSTR-0160	* MGC - Approve Internal Controls	0%	16-Jan-15	3-Mar-15	78
PPC-NON/CONSTR-0730	MGC - Approve Slot Monitoring System	0%	3-Feb-15	16-Mar-15	27
PPC-NON/CONSTR-0140	MGC - Develop & Provide On Site Requirements For Inspection For Pre-Opening Activities (RFA # 2)	0%	2-Mar-15	31-Mar-15	58
PPC-NON/CONSTR-0740	MGC - Approve Slot Machine Testing Program	0%	3-Mar-15	31-Mar-15	17
PPC-NON/CONSTR-0700	MGC - Approval of Responsible Gaming Plan (FDC # 20)	0%	3-Feb-15	15-Apr-15	26
PPC-NON/CONSTR-0190	MGC - On-Site Review & Approval Process Of Surveillance System	0%	24-Feb-15	15-May-15	16
PPC-NON/CONSTR-0130	MGC - Develop & Provide Process & Road Map Requirements For On-Site Operating License Issuance	64.52%	03-Mar-14 A	29-May-15	17
PPC-NON/CONSTR-0230	MGC - Test & Approve Slot Monitoring System for Use	0%	1-Apr-15	29-May-15	17
Other Requirements					
PPC-NON/CONSTR-0450	SG&R - Submit Plan for Regional Tourism (License #23)	100%	30-Mar-14 A	30-Apr-14 A	
PPC-NON/CONSTR-0420	SG&R - Submit Affirmative Marketing Program for Design & Construction and On-site Workforce	100%	28-Mar-14 A	26-Jun-14 A	
PPC-NON/CONSTR-0430	SG&R - Submit Affirmative Marketing Plan for Businesses Providing Goods & Services	100%	28-May-14 A	07-Aug-14 A	
PPC-NON/CONSTR-0440	SG&R - Submit Plan to Work with MA DOL on Employment Opportunities	100%	28-May-14 A	07-Aug-14 A	
PPC-NON/CONSTR-0460	SG&R - Gas Line Easement	100%	05-May-14 A	22-Aug-14 A	
PPC-NON/CONSTR-0330	* SG&R - Execute Amended Lottery Agreement (License # 10)	74.29%	05-Nov-14 A	2-Feb-15	98
PPC-NON/CONSTR-0360	SG&R - Apply For Or Amend Existing & Obtain Alcoholic Beverage License	14.29%	05-Jan-15 A	2-Feb-15	98
PPC-NON/CONSTR-1000	SG&R - Install Security / IT Equipment	0%	18-Feb-15	14-Apr-15	5

* The dates on various items identified above are under evaluation. SG&R and MGC are currently in communication to get dates in line with current non-construction activities.

APPENDIX 3

Plainridge Park Casino Quarterly Report to MGC Affirmative Action Program Design & Construction As of December 31, 2014

Reference 205 CMR 135.02 – (3)

Diversity Plan for the Design and Construction Phase of Plainridge Park Casino previously approved during MGC meeting held May 15, 2014 and project remains in compliance with said plan.

Specifics of said progress addressed in the following Appendix 8 and Appendix 9 of this quarterly report.

APPENDIX 4

Plainridge Park Casino Quarterly Report to MGC Project Schedule Changes As of December 31, 2014

Reference 205 CMR 135.02 – (4)

No circumstances have arisen that would necessitate a major change to the project schedule or impact the completion date of June 2015.

In addition to SGR and Turner Construction monitoring the schedule, on a monthly basis, Turner Construction provides MGC consultants the current project schedule for construction and non-construction activities.

Attached hereto is a report of aerial photos taken as of December 2, 2014 and various project photos taken between January 2 and January 7, 2015.



PENN NATIONAL
GAMING, INC.



Turner

PLAINRIDGE PARK CASINO - PROJECT PHOTOS

Aerial Photos Taken as of 12/2/14





Various Project Photos Taken between 1/2/15 and 1/7/15

Photovoltaic Array on East-Side of Casino



Overlooking West Side of Casino – Photovoltaic Array and Roof Top Units



Northeast Exterior Wall of Casino



View of North Side of Garage Taken at Porte Cochere



Porte Cochere Exterior Wall Progress



North Side of Casino Rooftop Units and Cultured Stone



West Side of Casino Exterior Wall in Progress of Being Caulked



Parking Garage PG-2 Level 4 Lobby



Stair #5 Wall Panels and Cultured Stone



Stair #5 Cultured Stone and Northeast Casino Exterior Wall



Curtain Wall and Main Entry at Porte Cochere



Porte Cochere



West Lean-To of Casino and Supports
for PV Array



Parking Garage PG2 Stairwell Finishes



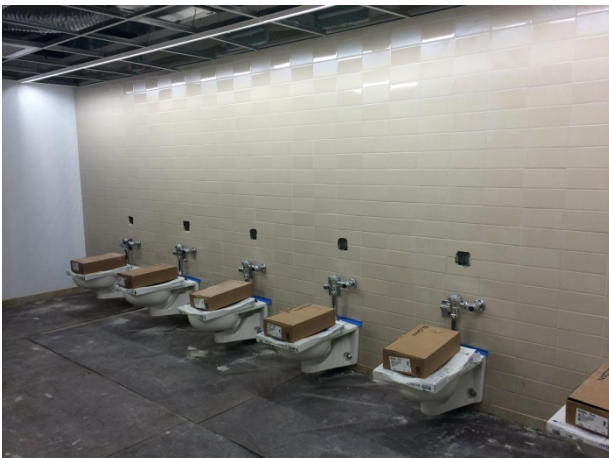
North Side of Parking Garage Finishes



North Side of Parking Garage Office
Finish Installation



Parking Garage Women's Bathroom



Parking Garage Employee
Dining Room



Casino Flutie's Pub and Kitchen High-Wall Taping and Boarding



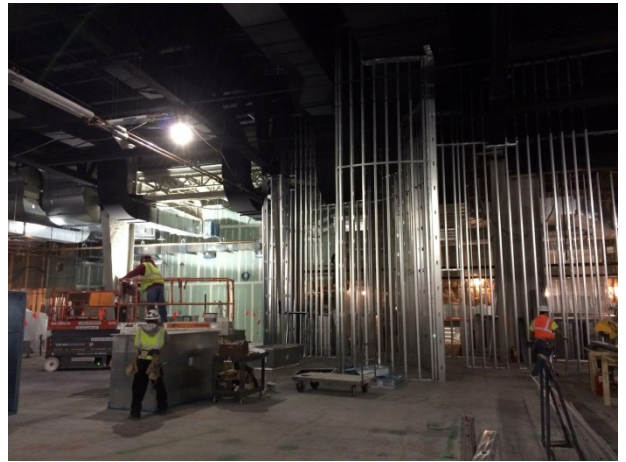
Casino Area 6 Bathrooms



Casino Area 7 Framing



Casino Flutie's Pub Framing



Overall Framing at East Side of Casino

Simulcast Early Turn-over Area



Simulcast Early Turnover Temporary Bar



Simulcast Early Turnover Area



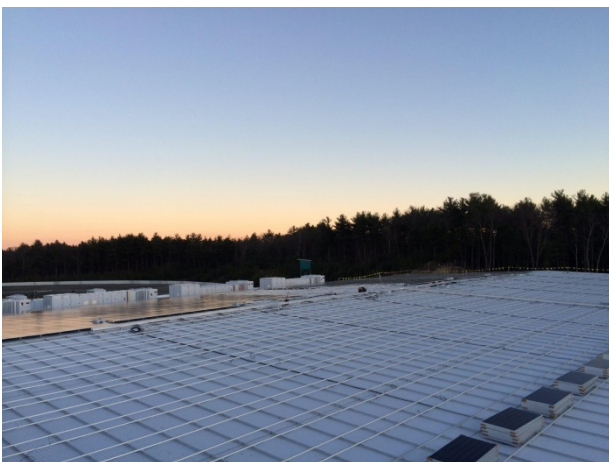
Simulcast Early Turnover Area



Simulcast Early Turnover Area Offices



Photovoltaic Array on Roof



Photovoltaic Array on Roof



APPENDIX 5

**Plainridge Park Casino
Quarterly Report to MGC
Cost of Construction and Capitalization of Gaming Licensee
As of December 31, 2014**

Reference 205 CMR 135.02 – (5)(a)(b)

Financial information requested by this section is currently being prepared by the licensee. Such information will be submitted to MGC concurrent with its release to the public, which is currently anticipated to be January 29, 2015.

**Plainridge Park Casino
Quarterly Report to MGC
Design and Construction Contracts
As of December 31, 2014**

Reference 205 CMR 135.02(5)(c)

LIST OF DESIGN AND CONSTRUCTION CONTRACTS ISSUED QUARTER ENDING DECEMBER 31, 2014			
<u>Vendor/Contractor</u>	<u>Date</u>	<u>Services</u>	<u>MGC Status</u>
Control Point Technology	12/09/14	Audio / Visual Install	NGV - Registrant
AJ Conveyor and Laundry Systems, LLC	12/16/14	Laundry Conveyor System Install	NGV – Pending
Beverage Management Systems	12/16/14	Beverage Dispensing System Install	NGV – Registrant
New England Office Supply	12/30/14	Furniture Install	NGV – Registrant
Southwest Surveillance Systems	12/30/14	Install of Audio / Visual Equipment	NGV – Registrant

Copies of contracts are available at the construction site for review purposes.

APPENDIX 7

Plainridge Park Casino Quarterly Report to MGC Status Report of Construction Activities As of December 31, 2014

Reference 205 CMR 135.02 – (5)(d)

Status Report Reflecting Progress of Construction

- Significant construction activities to date are in line with approved schedule (see Appendix 2) and include:
 - All contracts have been awarded with exception to landscaping
 - Anticipate awarding in February 2015
 - Exterior of casino building is 95% complete
 - Photovoltaic panels on casino building roof are 40% complete
 - Roof Top Units on casino roof are all set and running
 - Providing temperature control for the gaming floor
 - Asphalt paving binder course has been installed on all site roads and parking lots
 - Site lighting is installed and energized
 - Work has been awarded for the MassDOT offsite improvements and submittals are currently in progress
 - Still awaiting permit for off-site work
 - Interior fitout of casino building is in progress
 - Simulcast operations temporarily relocated to the completed second floor multi-purpose room
 - Balance of simulcast renovation phases in progress; first floor renovations to be completed by March 15, to support live racing start up on April 1
 - Expect certificate of occupancy to be issued end of February for the garage and office spaces; occupancy of offices expected early March

Areas of non-compliance with approved schedule

- None

Certification Statement

I certify that construction activities through December 31, 2014, are in compliance with the project schedule approved by MGC on July 10, 2014.



John R. Rauen
Authorized Representative
Springfield Gaming and Redevelopment, LLC

APPENDIX 8

Plainridge Park Casino Quarterly Report to MGC Project Construction Work Force As of December 31, 2014

Reference 205 CMR 135.02 – (5)(e)

Project Construction Work Force reports the following for WBE/MBE/VBE participation:

Minority	15% participation to date vs. goal of 16%
Female	4% participation to date vs. goal of 7%
Veteran	10% participation to date vs. aspirational goal of 3%

Detailed statistical reports attached:

- Subcontractors Workforce Percentages
- Total Weekly Manpower Chart
- Weekly Hours and Percentages
- Workers Onsite by Company Log

Deviation from established goals:

Minority	15% participation to date vs. goal of 16%
Female	4% participation to date vs. goal of 7%

- Overall manpower has increased from last quarter, therefore diluting the M/W workforce. Turner continues to hold corrective action meetings with subcontractors in noncompliance.
- Licensee and Turner will continue to monitor work force participation and established goals

Weekly Manpower Report:

- Certain periods in November/December were directly affected by drop in manpower due to holidays and four-day workweeks.

SUBCONTRACTORS WORKFORCE PERCENTAGES ~ Plainridge Park Casino

WEEK ENDING	SUBCONTRACTOR	THIS WEEKS HOURS	LAST WEEKS HOURS	Y-T-D JOB HOURS	Minority Y-T-D HOURS	LAST WEEK Minority %	THIS WEEK Minority %	Minority YEAR TO DATE %	Female Y-T-D HOURS	LAST WEEK Female %	THIS WEEK Female %	Female YEAR TO DATE %	Veteran Y-T-D HOURS	LAST WEEK Veteran %	THIS WEEK Veteran %	Veteran YEAR TO DATE %
12/28/2014	Turner Construction	352.0	392.0	9,737.0	2,857	38	31	29	1,341.0	10	11	14	0.0	0	0	0
12/28/2014	Marois Brothers	312.0	488.0	21,046.0	2,581	13	21	12	132.0	0	0	1	2,413.0	10	10	11
12/28/2014	S&F Concrete	42.0	116.5	6,195.5	542	9	0	9	0.0	0	0	0	0.0	0	0	0
12/28/2014	NB Kenney	486.0	430.0	15,073.5	611	6	0	4	1,100.0	6	9	7	1,973.0	12	12	13
12/28/2014	Prime Steel	0.0	94.0	5,055.0	768	0	0	15	389.0	0	0	8	168.5	0	0	3
12/28/2014	Ostrow Electrical	799.0	1,069.0	17,711.5	2,174	13	13	12	1,258.5	4	4	7	4,609.5	23	24	26
12/28/2014	Kone	136.0	168.0	1,115.0	0	0	0	0	0.0	0	0	0	0.0	0	0	0
12/28/2014	Costa Brothers	12.0	102.0	5,548.0	398	0	0	7	0.0	0	0	0	1,035.5	8	50	19
12/28/2014	Modern Glass	160.0	277.0	2,168.5	0	0	0	0	0.0	0	0	0	184.0	14	0	8
12/28/2014	Chapman Waterproofing	56.0	85.0	2,686.5	746	0	0	28	72.5	0	0	3	268.0	0	0	10
12/28/2014	TJ McCartney	211.0	336.0	13,330.5	4,056	0	0	30	0.0	0	0	0	682.0	0	0	5
12/28/2014	Pro Cut	4.0	20.0	425.0	0	0	0	0	0.0	0	0	0	0.0	0	0	0
12/28/2014	RM Technologies	40.0	0.0	2,746.0	1,535	0	50	56	0.0	0	0	0	35.0	0	0	1
12/28/2014	Arden Engineering	257.0	268.5	3,741.5	0	0	0	0	0.0	0	0	0	134.0	0	0	4
12/28/2014	Island International	136.0	290.0	5,247.0	1,119	20	40	21	0.0	0	0	0	634.0	0	0	12
12/28/2014	Ryan Iron	0.0	48.0	1,925.0	177	0	0	9	0.0	0	0	0	0.0	0	0	0
12/28/2014	Titan Roofing	114.0	278.5	3,811.0	155	0	0	4	0.0	0	0	0	557.5	14	21	15
12/28/2014	DDS Industries	302.5	319.5	3,908.3	0	0	0	0	0.0	0	0	0	521.0	12	9	13
12/28/2014	Cox Engineering	445.0	1,002.0	8,575.0	1,338	16	14	16	0.0	0	0	0	982.0	10	8	11
12/28/2014	Coghlin Electric	1,217.0	1,353.5	8,371.5	0	0	0	0	492.0	5	6	6	380.0	4	2	5
12/28/2014	Commonwealth Scaffold	88.0	114.0	1,946.0	113	0	0	6	0.0	0	0	0	27.0	0	0	1
12/28/2014	Atlantic Contracting	24.0	56.0	505.0	0	0	0	0	0.0	0	0	0	0.0	0	0	0
12/28/2014	Reid Electric	24.0	40.0	520.0	0	0	0	0	0.0	0	0	0	520.0	100	100	100
12/28/2014	E.S. Boulos	220.0	392.0	2,322.0	216	20	18	9	0.0	0	0	0	84.0	10	9	4
12/28/2014	Soep Painting	116.0	280.0	1,551.0	428	29	22	28	0.0	0	0	0	0.0	0	0	0
12/28/2014	H. Carr & Sons	553.5	1,704.0	8,948.5	2,019	26	30	23	52.0	0	9	1	569.0	7	7	6
12/28/2014	High Point Interiors	20.0	160.0	630.0	0	0	0	0	0.0	0	0	0	0.0	0	0	0
12/28/2014	Circle Floors	0.0	0.0	93.0	93	0	0	100	0.0	0	0	0	0.0	0	0	0
TOTALS		5,217.5	7,137.5	149,035.1	21,672.9	15	12	15	5,653.5	3.0	5	4	14,633.0	11.0	9	10

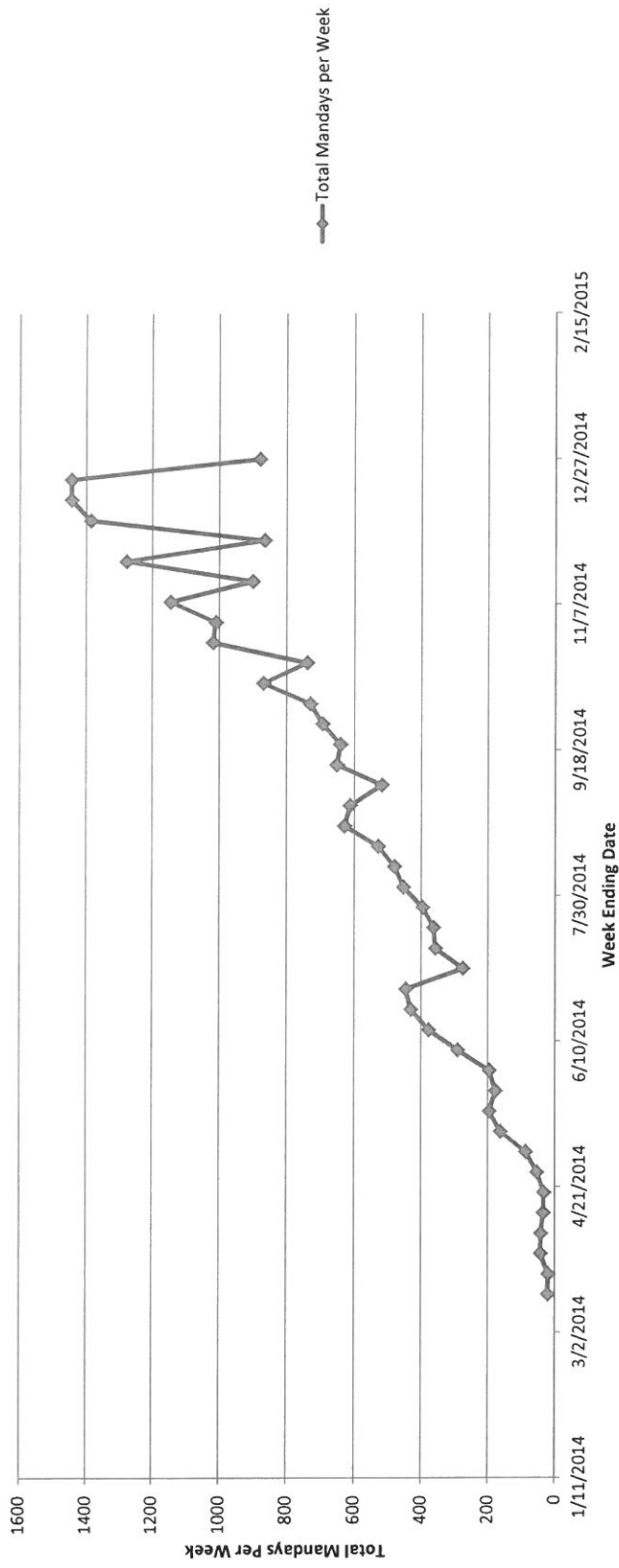
Project Goals
 Minority 16%
 Female 7%
 Veteran *Aspirational 3%

Year To Date
 15 %
 4 %
 10 %

WEEKLY HOURS AND PERCENTAGES ~ Plainridge Park Casino

SUBCONTRACTOR	Minority HOURS	Minority %	Last week Minority %	Female HOURS	Female %	Last Week Female %	Veteran HOURS	Veteran %	Last Week Veteran %	TOTAL HOURS	Last Weeks Hour	Week Ending
Turner Construction	110	31	38.0	40.0	11	10	0.0	0	0	9737.0	392.0	12/28/2014
Marois Brothers	64	21	13.0	0.0	0	0	32.0	10	10	21046.0	488.0	12/28/2014
S&F Concrete	0	0	9.0	0.0	0	0	0.0	0	0	6195.5	116.5	12/28/2014
NB Kenney	0	0	6.0	45.0	9	6	57.0	12	12	15073.5	1,170.0	12/28/2014
Prime Steel	0	0	0.0	0.0	0	0	0.0	0	0	5055.0	94.0	12/28/2014
Ostrow Electrical	106	13	13.0	35.0	4	4	193.0	24	23	17711.5	1,069.0	12/28/2014
Kone	0	0	0.0	0.0	0	0	0.0	0	0	1115.0	168.0	12/28/2014
Costa Brothers Masonry	0	0	0.0	0.0	0	0	6.0	50	8	5548.0	102.0	12/28/2014
Modern Glass	0	0	0.0	0.0	0	0	0.0	0	14	2168.5	277.0	12/28/2014
Chapman Waterproofing	0	0	0.0	0.0	0	0	0.0	0	0	2686.5	85.0	12/28/2014
TJ McCartney	0	0	0.0	0.0	0	0	0.0	0	0	13330.5	336.0	12/28/2014
Pro Cut	0	0	0.0	0.0	0	0	0.0	0	0	425.0	20.0	12/28/2014
RM Technologies	20	50	0.0	0.0	0	0	0.0	0	0	2746.0	0.0	12/28/2014
Arden Engineering	0	0	0.0	0.0	0	0	0.0	0	0	3741.5	268.5	12/28/2014
Island International	55	40	20.0	0.0	0	0	0.0	0	0	5247.0	290.0	12/28/2014
Ryan Iron	0	0	0.0	0.0	0	0	0.0	0	0	1925.0	48.0	12/28/2014
Titan Roofing	0	0	0.0	0.0	0	0	24.0	21	14	3811.0	278.5	12/28/2014
DDS Industries	0	0	0.0	0.0	0	0	28.5	9	12	3908.3	319.5	12/28/2014
Cox Engineering	61	14	16.0	0.0	0	0	36.0	8	10	8575.0	1,002.0	12/28/2014
Coghlin Electric	0	0	0.0	72.0	6	5	24.0	2	4	8371.5	1,353.5	12/28/2014
Commonwealth Scaffold	0	0	0.0	0.0	0	0	0.0	0	0	1946.0	114.0	12/28/2014
Atlantic Contracting	0	0	0.0	0.0	0	0	0.0	0	0	505.0	56.0	12/28/2014
Reid Electric	0	0	0.0	0.0	0	0	24.0	100	100	520.0	40.0	12/28/2014
ES Boutos	40	18	20.0	0.0	0	0	20.0	9	10	2322.0	392.0	12/28/2014
Seep Painting	26	22	29.0	0.0	0	0	0.0	0	0	1551.0	280.0	12/28/2014
H. Carr & Sons	165	30	26.0	52.0	9	0	36.0	7	7	8948.5	1,704.0	12/28/2014
High Point Interiors	0	0	0.0	0.0	0	0	0.0	0	0	630.0	160.0	12/28/2014
Circle Floors	0	0	0.0	0.0	0	0	0.0	0	0	93.0	0.0	12/28/2014
TOTAL HOURS FOR THE WEEK	647.0			244.0			480.5			165610.6		
TOTAL % FOR THE WEEK	12			5			9					

Plainridge Park Casino Total Weekly Manpower



Plainridge Park Casino	
Cumulative individuals onsite through Dec 31 2014	
Company	Number of Workers
Axiom	3
Arden Engineering	12
Atlantic	5
Baldwin	2
Boston Lightning Rod	2
Briggs	3
Bristol Fire	1
Chapman	18
Circle Floors	8
Clifford & Galvin	3
Coghlin	39
Collins Overhead	1
Commonwealth Scaffold	19
Cook Landclearing	2
Cosco Inc.	8
Costa	14
Cox Engineering	37
Currie	1
DDS	8
Don Martin	11
ESB	17
FEI	3
Food Equipment Inst.	2
Glancy	4
H. Carr & Sons	56
H.A.S.	2
Hallmore	3
Haron	1
HAS Construction	6
Heritage	2
High Point	2
High Voltage Maintenance	2
Imperatore	3
Island	13
JCJ Arch.	2
JME	1
Johnson Insul	3
King	18
Kone	6
MBI	29
MD Drilling	11
Melo Rod	12
Modern Glass	20
MTK Const.	4
NBK	40
New England Finish	1
Ostrow	27
Penn Game	4
Perry Assoc.	1
Pinck	1
Prime	18
Pro Cut	5
Richard Reed Electric	1
RM Tech	14
Ryan Iron	8
S&F Concrete	67
S.O.S.	1
Security Fence	6
Soep Painting	8
Soini	5
Steelco	2
Sully Mac	6
Tilton	4
Titan	26
TJ McCartney	55
Turner	38
Ver-tex	1
Waterman	1
Willow Tree	3
Total	762

APPENDIX 9

Plainridge Park Casino Quarterly Report to MGC Contracts and Payments to Minority, Women and Veteran Business Enterprises for Construction Phase As of December 31, 2014

Reference 205 CMR 135.02 – (5)(f)

Detailed statistical reports attached:

M/W/VBE Tracking Report updated through 12/31/14

- Turner has issued \$82.2 million in construction contracts and change orders and received commitments of the following M/W/VBE participation:

Minority	12% participation to date vs. goal of 4%
Female	13% participation to date vs. goal of 7%
Veteran	10% participation to date vs. aspirational goal of 3%

Actual Payments to Minority Business Enterprises

- As of December 31, 2014, commitments totaling \$27,587,509 have been made to MBE/WBE/VBE enterprises.
- Through December 31, 2014, payments to MBE/WBE/VBE amounted to \$9,974,175.

updated: 12/30/2014

Trade	Contract Award Date	Award Amount	Revised Amount	Awarded Prime Subcontractor	MBE / WBE / VBE Opportunity	Updated At award						Updated Prior to start and during construction						Updated as payments are made		
						Original Commitment						Current Amount						Payments to Date		
						MBE	%	WBE	%	VBE	%	MBE	%	WBE	%	VBE	%	MBE	WBE	VBE
Existing Conditions Demo and Structure lower tier	05/16/14			Turner	None															
Temp Stair lower tier	05/16/14			Commonwealth	None															
Earthwork lower tier	04/11/14			Marois	Don Martin Corporation FC Corporation Security Fence Company Willow Tree Outdoor Markings, Inc. Dagle Electric Fabiano Oil		15% 6%			4% 2% 1%			8%			2% 1% 4% 2%				
Earthwork - Garage lower tier	05/12/14			Marois	None															
Concrete lower tier	04/04/14			S&F	S&F Rebars and Mesh Melo's Rod Busters		88%			6% 6%			91%			5% 5%				
Concrete - Garage lower tier	05/12/14			S&F	S&F Rebars and Mesh Melo's Rod Busters		88%			7% 5%			88%			7% 5%				
Precast Garage	07/09/14			Blakeslee Prestress	None															
Demolition Award	07/16/14			R M Technologies	R M Technologies		100%						100%							
Masonry lower tier	06/10/14			Costa Brothers Masonry	Costa Brothers Masonry		100%						100%							
Steel Framing lower tier	04/11/14			Industries Canatal	Erection and Welding		11%						6%							
Misc Metal lower tier	07/09/14			Ryan Iron Works	None															
Damproofing & Waterproofing lower tier	06/19/14			Chapman	Gilbert & Becker Villanova Supplies Exchange		9%			3%			8%			3%				
Membrane Roofing lower tier	05/16/14			Titan Roofing	Titan Roofing		100%						100%							
Spray on Fireproofing and Garage Spray Insulation lower tier	07/24/14			Island International	Iroquois Bar Corp		8%													
Spray Foam lower tier	06/17/14			Island International	Iroquois Bar Corp		2%													
Doors & Frames lower tier	09/10/14			Eaton Door and Frame	None															
Entrances Storefronts & Curtainwall lower tier	06/17/14			Modern Glass	Material Hardware Coulter Construction		9%			2%			8%							
Plaster & Gypsum Board lower tier	06/10/14			TJ McCartney	TJ McCartney					100%						100%				
Folding Partitions lower tier	11/12/14			CRF, Inc Interior Systems	None															
Millwork lower tier	11/26/14			Allegheny Millwork	None															
Flooring lower tier	11/26/14			Circle Flooring	None															
Theming lower tier	11/26/14			Adirondack Studios	Penn Staines Products											0.7%			0.7%	

updated: 12/30/2014

Trade	Contract Award Date	Award Amount	Revised Amount	Awarded Prime Subcontractor	MBE / WBE / VBE Opportunity	Updated At award					Updated Prior to start and during construction					Updated as payments are made				
						Original Commitment					Current Amount					Payments to Date				
						MBE	%	WBE	%	VBE	MBE	%	WBE	%	VBE	MBE	WBE	VBE		
Paint lower tier	11/25/14			Soep Painting	Passomo Paints Inc JH Bennett				0.06%			0.4%			0.1%		0.4%			
Photovoltaic Solar Generation Award lower tier	09/21/14			E.S. Boulos of Westbrook	Senices Enterprise		11%							11%						
Kitchen Equipment lower tier	10/02/14			Johnson-Lancaster	Certified Connections Inc.		23%							23%						
Pre-Engineered Metal Building lower tier	04/11/14			Currie Building Systems	None															
Resinous Flooring lower tier	11/26/14			New England Decks and Floors	New England Decks and Floors						100%						100%			
Elevators - Garage lower tier	05/16/14			Kone	None															
Fire Protection- Garage lower tier	06/05/14			Arden Engineering	E.L. Waterman				12%					12%						
Temp Fire Protection lower tier	05/20/14			Bristol Fire Protection	None															
Fire Protection- Casino lower tier	09/11/14			Arden Engineering	E.L. Waterman				11%					10%						
Plumbing- Casino lower tier	09/22/14			NB Kenney	Construction Planners Hat Creek Outfit, Inc Total Mechanical				11%		3%			7%		4%			3%	
Plumbing - Garage lower tier	05/16/14			NB Kenney	None															
Temp Plumbing lower tier	04/11/14			NB Kenney	None															
Underground Plumbing lower tier	06/17/14			NB Kenney	None															
HVAC Parking Garage lower tier	08/14/14			DDS Industries	General Safety Services				0.1%						0.1%					
HVAC Casino lower tier	09/22/14			Cox Engineering	Cox Engineering						100%						100%			
Casino Elevator lower tier	08/08/14			ThyssenKrupp	None															
MEP Equipment - Casino and Garage lower tier	04/11/14			Turner Logistics	None															
MEP Equipment - Simulcast lower tier	06/17/14			Turner Logistics	None															
Overhead Door & Loading Dock Equipment lower tier	09/11/14			Collins Overhead Door, Inc	Dagle Electric				3%						3%					
Electrical- Casino lower tier	09/22/14			Coghlin Electric	Coghlin Electric				100%						100%					
Electrical - Garage lower tier	05/12/14			Ostrow Electric	Reid Electric Fire Code Design		13%		4%					13%		4%				
Underground and Site Electrical lower tier	06/17/14			Ostrow Electric	Reid Electric Granite City Electric		3%		10%					3%		8%				
Casino GWB/Casino & Garage ACT lower tier	11/25/14			H. Carr & Sons	Tavares, LLC/Essex		11%							11%						

updated: 12/30/2014

Trade	Contract Award Date	Award Amount	Revised Amount	Awarded Prime Subcontractor	MBE / WBE / VBE Opportunity	Updated At award					Updated Prior to start and during construction					Updated as payments are made				
						Original Commitment					Current Amount					Payments to Date				
						MBE	%	WBE	%	VBE	%	MBE	%	WBE	%	VBE	%	MBE	WBE	VBE
Title and Interior Stone lower tier	11/25/14			High Point Interiors	None															
Specialties lower tier	11/26/14			Ver-Tex	None															
TOTALS TO DATE		\$ 72,317,833.00	\$ 82,223,229.00			\$ 8,373,091.77	12%	\$ 9,514,755.00	13%	\$ 8,014,368.00	11%	\$ 9,468,955.32	12%	\$ 10,293,593.46	13%	\$ 7,824,960.91	10%	\$ 5,683,913.30	\$ 2,119,589.00	\$ 2,170,673.00

Total Contracts and Change Orders Awarded to Date	\$ 82,223,229.00
Total W/M/VBE Original Commitments	\$ 25,902,214.77
Total W/M/VBE Commitments to Date	\$ 27,587,509.69
Total W/M/VBE Payments through September 30, 2014	\$ 2,683,379.00
Total W/M/VBE Payments through December 31, 2014	\$ 9,974,175.30

Original Commitment	\$25,902,214.77	Current Commitment	\$27,587,509.69	Payments to Date	\$ 9,974,175.30
---------------------	-----------------	--------------------	-----------------	------------------	-----------------

PROJECT GOALS	COMMITMENT TOTALS
MBE - 4%	MBE Amount 12%
WBE - 7%	WBE Amount 13%
VBE - 3%	VBE Amount 10%

APPENDIX 9

Plainridge Park Casino Quarterly Report to MGC Contracts and Payments to Minority, Women and Veteran Business Enterprises for Design Phase As of December 31, 2014

Reference 205 CMR 135.02 – (5)(f)

Detailed statistical report:

Minority	0% participation to date vs. goal of 4%
Female	0% participation to date vs. goal of 7%
Veteran	0% participation to date vs. aspirational goal of 3%

Deviation from established goals:

- Unique set of circumstances, as described in the June 30 quarterly report, remain the same.
- JCJ, project architect, has identified a WBE structural engineer to assist with modifications being made to the existing racing building. Contract not yet awarded but anticipated that work starting this upcoming quarter.
- JCJ has contracted with a disadvantaged subcontractor in the amount of \$20,000 and made payments of \$21,000 as of December 31, 2014; however, we understand this sub does not fall into any of the M/W/VBE categories.
- SGR will continue to work with design team members to identify any further MBE/WBE/VBE opportunities.

Actual Payments to Minority Business Enterprises

As of December 31, 2014, no payments were contractually due to any design team M/W/VBE enterprises.

APPENDIX 10

Plainridge Park Casino Quarterly Report to MGC Permits As of December 31, 2014

Reference 205 CMR 135.02 – (6)

Permit Chart and Corresponding Documents (pursuant to 205 CMR 120.01)

- Permit Status Report dated January 12, 2015 attached.
- Casino Build-Out Permit received October 20, 2014.

Updates to MassDOT/MEPA Process

- Received MassDOT/MEPA Section 61 Findings for offsite traffic improvements
- Received comments on final design plans submitted to MassDOT Boston and District 5 offices
 - Expect highway access permit in January and commencement of Route 1 off-site work March 2015
 - Currently working with contractor in reviewing shop drawings/RFIs/procurement.

Permit Amendments

- Expect to file a special permit amendment January 13, 2015 in reference to the areas identified below:
 - Expanded Parking for Patrons and Employees
 - Racing Regulatory Building
 - Smoking Area Expansion
 - Armored Car Bay Relocation
 - Signage
- None of the above proposed improvements fall within the A+B+C Open Space as required by LEED Credit SSc5.2.

Permit Appeals

- None

Plainridge Park Casino Permit Status Report

Report Updated January 12, 2015

<u>PERMIT</u>	<u>DATE ISSUED</u>
1. <u>Plainville Conservation Commission</u>	
• Negative Determination of Applicability (sitework) (no number assigned)	10/23/2012
• Order of Conditions (electrical transformer substation) Mass DEP File No. SE 265-0322	11/19/2013
• Order of Conditions (additional surface parking) Mass DEP File No. SE 265-0323	11/19/2013
• Order of Conditions (offsite highway improvements) Mass DEP File No. SE 265-0324	11/19/2013
2. <u>Plainville Board of Health</u>	
• Environmental Health Impact Permit (no number assigned)	07/09/2013
• Modified Environmental Health Impact Permit Stormwater Treatment Units (no number assigned)	08/11/2014
3. <u>Plainville Planning Board</u>	
• Amended Special Permit (no number assigned)	08/29/2013
4. <u>Plainville Building Department</u>	
• Building Permit (Core Shell Structure) Permit Number 14-134	06/18/2014
• Building Permit (Simulcast Demolition) Permit Number 14-153	08/06/2014
• Building Permit (Parking Garage Transfer) Permit Number 14-131A	10/07/2014
• Building Permit (Casino Fitout) Permit Number 14-257	10/20/2014
5. <u>Mass. Department of Transportation (MassDOT)</u>	
• Attractions Guide Signage Permit Number 5-2012-0130	09/05/2012
• Section 61 Findings (Reference MEPA EEA #11431)	10/07/2014
• Soil Borings for Design and Signals Permit Number 5-2014-0506	11/20/2014

6. Mass. Division of Fisheries and Wildlife (Mass DFW)
 - Confirmation of “No-Take” Letter under Mass. Natural Heritage and Endangered Species Program **NHESP Tracking No. 10-27867** 04/12/2013

7. Mass. Exec. Office of Energy & Environmental Affairs
 - Certificate of the Secretary of Energy and Environmental Affairs on the Final Environmental Impact Report under the Massachusetts Environmental Policy Act (MEPA FEIR) **EEA Number 11431** 12/27/2013
 - E-mail from MEPA Director N-Grid Distribution Line to MITS – no review required **EEA Number 11431** 10/01/2014

8. U. S. Environmental Protection Agency (US EPA)
 - Confirmation of No Permit Required under the National Pollutant Discharge Elimination System (NPDES) Permitting requirements 06/12/2013

9. Massachusetts Gaming Commission
 - Section 61 Findings (Reference MEPA EEA #11431) 12/31/2014

Pending Project Permits:

- * MassDOT Highway & Entrance Modifications
Permit # 5-2014-0416 Under review

Future Project Permits:

- A.) Plainville Conservation Commission - Notice of Intent
Racing Regulatory Building and Parking Updates Filing January 2015

- B.) Plainville Planning Board – Amendment to Special Permit
Racing Regulatory Building
Smoking Area Expansion Filing January 2015
Armored Car Bay Relocation
Expanded Parking for Patrons and Employees
Corporate Branding and Wayfinding Signage Modifications

- C.) Plainville Board of Health – Amendment to Environmental Health Permit
Racing Regulatory Building
Smoking Area Expansion Filing January 2015
Armored Car Bay Relocation
Expanded Parking for Patrons and Employees

APPENDIX 11

**Plainridge Park Casino
Quarterly Report to MGC
Notice to Organized Labor
As To Licensees Commitments for Affirmative Action
As of December 31, 2014**

Reference 205 CMR 135.02 – (7)

No change from last quarter. Remain in compliance with licensing requirements and commitments pursuant to MGL. C23K various sections.

Turner's relationship with the Business Agents and Managers remains positive and receptive and they continue to be cooperative in reinforcing the goals of 16% minority, 7% female and 3% aspirational veterans.

APPENDIX 12

Plainridge Park Casino Quarterly Report to MGC Operational Affirmative Action Plan As of December 31, 2014

Reference 205 CMR 135.02 – (8)

Detailed Statistical Report Attached:

Minority	6% participation to date vs. goal of 6%
Female	5% participation to date vs. goal of 12%
Veteran	23% participation to date vs. aspirational goal of 3%

- As of December 31, 2014, total commitments of \$5.9 million have been made for procurement of non-construction goods and services.
- SGR anticipates higher participation of M/W/VBE enterprises as further contracts are issued in first and second quarters as planned.
- SGR continues to reach out to M/W/VBE enterprises to identify and further opportunities for participation.

Actual Payments to Minority Businesses

- As of December 31, 2014, no payments have been contractually due to any M/W/VBE enterprises.

Vendor Outreach Programs:

- SGR participated as a guest speaker at a CEO Roundtable Discussion event held by the Greater New England Minority Supplier Diversity Council in Boston. The event was well attended by approximately 100 – 125 people from numerous surrounding area businesses.
- SGR is slated to speak at another Minority Business Development Agency CEO Roundtable Discussion event hosted by Greater New England Minority Supplier Diversity Council in Boston late January.

<u>Category</u>	<u>Payments as of 12/31/14</u>	<u>Purchase Order Balance</u>	<u>Executed Contracts as of</u>		<u>MBE</u>	<u>WBE</u>	<u>VBE</u>
			<u>12/31, not in Wennsoft</u>	<u>Total Commitment</u>			
Audio Visual							
Signage							
Furnishings							
Gaming Equipment							
Surveillance							
Operations Equipment							
IT Equipment							
	\$ 230,663	\$ 1,763,292	\$ 3,929,293	\$ 5,923,248	\$ 335,636	\$ 290,944	\$ 1,341,644
					6%	5%	23%

MBE Details Value
New England Office Supply

WBE Details
Beverage Management Systems

VBE Details
Southwest Surveillance Systems (Phase #1)
Z-Band (Subcontractor to Control Point - A/V)

Note: No payments made to Diverse Vendors as of 12/31/14.