



Berkeley

Freshman and Transfer Edge

Freshman & Transfer Edge 2024
Student Handbook

Table of Contents

NEXT STEPS CHECKLIST -----	3
PROGRAM OVERVIEW -----	4
WHO'S INVOLVED & WHO TO CONTACT -----	4
SELECTING & REGISTERING FOR COURSES -----	5
SPECIFIC COURSES FOR NEWLY ADMITTED STUDENTS--	6
TRANSFER EDGE SPECIFIC PROGRAMS-----	7
PAYMENT, CANCELLATION & ACADEMIC DEADLINES---	8
FINANCIAL AID -----	9
ACADEMIC & OTHER ACCOMMODATIONS -----	9
PREPARATORY WEBINARS -----	9
SUMMER PROGRAMMING -----	10
EDGE STUDENT PORTAL -----	11
SUMMER HOUSING -----	11
INTERNATIONAL STUDENTS -----	12
STUDENT RESOURCES -----	12

Next Steps Checklist



1. Complete campus pre-enrollment compliance tasks / Register for courses

After selecting Freshman/Transfer Edge in your [CalCentral](#) Task list, your summer enrollment card will be activated within 12 hours. To check if your summer term has been activated, log on to the My Academics page of your [CalCentral](#) account and see if the summer term appears.

Before enrolling in classes, you will be presented with the University's Student Financial Agreement (SFA) & COVID-19 Vaccine Requirement in CalCentral. Follow the instructions on your "My Dashboard" tab under Tasks to clear your Student Financial Agreement and COVID-19 Vaccine Requirement tasks. You must clear both of these compliance tasks in order to proceed with your summer enrollment.

Once the summer term populates, and you have completed your compliance tasks, you will be able to enroll in courses. Please refer to this guide on registering for classes in CalCentral for further instruction.

Deadline: ASAP

2. Register for Summer Housing through Cal Housing (optional)

If you wish to live on campus during the summer, make sure to register for [Summer Housing](#) ASAP. You will have the option of living in the residence halls or your own accommodations during summer. You must register individually by completing the online Summer 2022 Residence Hall Housing Application located on the Cal Housing website as soon as possible.

Deadlines: The Freshmen Edge housing application is due on Friday, May 10th (Session C) and Monday, May 20th (Session D), 5pm; and the Transfer Edge housing application is due on Sunday, June 2nd, 5pm (in order to receive priority housing).



3. Complete the 2023-2024 and 2024-2025 FAFSA (Estimate Your Summer Aid!)

Please go to the [FAFSA website](#) to complete this step. The 2023-2024 FAFSA will determine your Financial Aid Eligibility for Summer 2024 and the 2024-2025 FAFSA will determine your eligibility for Fall 2024 and Spring 2025. Deadline: June 1, 2024

To Estimate your cost and financial aid for Summer Sessions: Log into [Cal Central](#), go to My Finances, navigate to the Finances Resources area on the right side of the page. Scroll down to the Summer Sessions heading and click on Summer Cost and Aid Estimator.

4. Log in to CalCentral to ensure you have submitted all necessary Financial Aid documentation

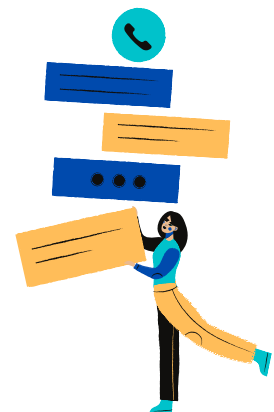
Log in to [CalCentral](#) (CalNet ID required) and review your Tasks to ensure that your [FAFSA](#) has been received and that you have submitted all required documents.

Deadline: By indicated deadlines on CalCentral

5. Complete tasks on CalCentral

There are various items you will need to complete on [CalCentral](#) as a new UC Berkeley student. These will be listed in the Tasks section of your Dashboard.

Deadline: By indicated deadlines on CalCentral



PROGRAM OVERVIEW

Congratulations on your acceptance to UC Berkeley, and welcome to Freshman/Transfer Edge!



Your participation in this program gives you an early start to your Berkeley experience by offering you the chance to take courses that fulfill breadth, prerequisite, and major requirements ahead of most incoming students, learn about campus and its many resources before the fall rush through our orientations and workshops, and build community with your peers through socials and programming events. Through this program, you will build a strong foundation for your time here at Berkeley. Go Bears!

WHO'S INVOLVED & WHO TO CONTACT

Berkeley Summer Sessions & Study Abroad: Program Coordination

The Freshman and Transfer Edge programs are coordinated by Summer Sessions & Study Abroad office staff at the University of California, Berkeley.

If you have any questions regarding registration, course enrollment, program-related events, billing, or other logistical aspects of the program, please don't hesitate to contact:

Sara Assadi-Nik

Program Coordinator



Berkeley Freshman and
Transfer Edge

Email: summeredge@berkeley.edu

Explore Your [Virtual Advising Options](#)

Check out our [Knowledge Base](#) for answers to common summer questions

SELECTING & REGISTERING FOR COURSES

After selecting Freshman or Transfer Edge in your CalCentral Tasks list, your summer enrollment card in CalCentral will be activated within 12 hours. To check if your summer enrollment has been activated, log on to the **My Academics** page of your CalCentral account and see if the summer term appears.

Once the summer term populates, you are able to enroll in courses. Explore courses on the [Berkeley Academic Guide](#), where you can filter results by Session, Major, and Breadth Requirements. Enrollment in Summer Sessions courses is on a **first-come, first-served** basis, so it is in your best interest to **register for courses as soon as possible**. Keep in mind that to be eligible for summer financial aid, you are required to enroll in a minimum of six units (this will usually amount to an average of two courses).



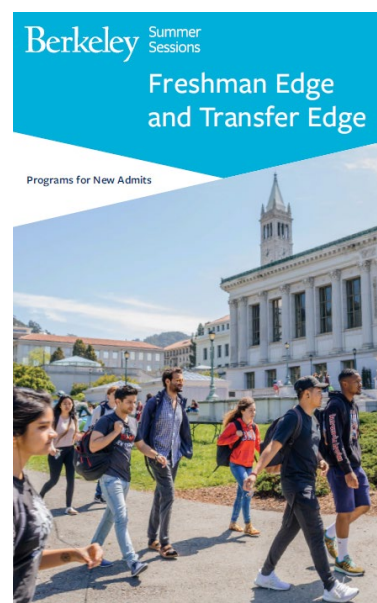
Please Note: With your summer term activated, you will be presented with the University's **Student Financial Agreement (SFA) & COVID-19 Vaccine Requirement** in CalCentral. Follow the instructions on your "My Dashboard" tab under Tasks to clear your Student Financial Agreement and COVID-19 Vaccine Requirement tasks by the stated deadlines.

As a Freshman/Transfer Edge Student, you are able to enroll in courses in any summer session (A-F), however, programming activities and workshops for Freshman and Transfer Edge students will primarily take place during Sessions C and D (late June through late July).

For summer 2024, the Freshman/Transfer Edge program will be run in a predominantly on-campus, in-person format, however there are roughly 200 online courses available as well for students who prefer to participate in a virtual environment. The schedule of classes is live, and when selecting your courses you will want to check the "Mode of Instruction" for each class to determine the mode of course delivery.

It also may be helpful to review the [general undergraduate graduation requirements](#). **Each college and school within UC Berkeley has its own requirements.** Check with your specific college, school, and/or major for further details (<http://guide.berkeley.edu/undergraduate/>). If you are enrolling in a course for your intended major, you must take that course for a letter grade.

For in depth instructions on how to search for and register for summer courses through CalCentral, please refer to this helpful guide provided by Student Information Systems, titled [Register for Classes](#). Here, you will find step by step infographics guiding you through the registration process, and instructions for dropping and swapping classes.



SPECIFIC COURSES FOR NEWLY ADMITTED STUDENTS

Letters and Science 1: Research, Discovery, and You – Session C

Letters and Science W1 is an online course for *incoming students*, particularly those who are excited to be at UC Berkeley but uncertain of where to start their explorations. Taking L&S W1 over the summer will give you the best possible start on your education, and help you make the most of your four years at Cal.



This online course provides an introduction to the intellectual landscape of the College of Letters and Science, revealing the underlying assumptions, goals and structure of a liberal arts education. The ultimate goal of the course is to transform the students into informed participants in their own educational experiences, so that they can make the most of their years at Berkeley.

The deadline to register/add this course is **5PM** (Pacific Standard Time) on **Friday, June 14, 2024**. For more information on Letters and Science 1 visit the [class schedule](#).

First Year Connect & Transfer Connect – Mentorship Programs – Session D

Freshmen and Transfer Edge students are invited to enroll in one of two versions of the popular Berkeley Connect mentorship program, specifically designed just for newly admitted freshmen and transfer students. Freshman Edge students can enroll in [First Year Connect](#), and Transfer Edge students in [Transfer Connect](#).



These are both one-unit courses that will help you build community and confidence as you begin your time at Berkeley. Through First Year Connect and Transfer Connect, you will be matched with a UC Berkeley graduate student who will be your mentor for the summer, and placed in a small group of first year or transfer student peers who will meet every week for informal discussions led by your mentor.

Through one-on-one and group mentoring, you will start to build your support network and chart your path at Berkeley. Students report that Berkeley Connect mentoring helped them connect with peers and professors, increased their understanding of the university, and boosted their sense of belonging at UC Berkeley. To sign up for First Year Connect or Transfer Connect, enroll in a section of English 98BC (First-Year Connect) or English 198BC (Transfer Connect) during Summer Session D. Note that one section of First-Year Connect and two sections of Transfer Connect will be conducted online. For questions, please email berkeleyconnect@berkeley.edu.

Math 1: Foundation of Lower Division of Mathematics

This course aims to bring students with varying Math backgrounds up-to-speed with the expectations of UC Berkeley's lower division mathematics courses. This course will support comprehension of the fundamental concepts necessary to excel in Math 16A/16B, 1A/1B, 10A/10B, and beyond. You can take this prep course concurrently with or prior to your Calculus classes. For newly admitted students within the Edge program, this course is well suited to help develop the skills you need to succeed in your introductory math courses and beyond. For more information on Math 1 visit the [class schedule](#).

TRANSFER EDGE SPECIFIC PROGRAMS

CE3 Transfer Transition Program

Are you a student in the CE3 Transfer Transition Program (TTP)? Enroll in your 6 units of TTP coursework as detailed [here](#). Students enrolled in TTP will have a program-specific orientation and will receive specific information about that orientation. TTP students are not required to attend any other Transfer Edge orientations. If you are a TTP student, and you have questions, please contact TTP Coordinator, Luisa Giulianetti (ttp@berkeley.edu).



Haas Pre-Core Program

Transfer students who have accepted their offer of admission to Haas are invited to participate in the Haas Summer Pre-Core Program. The program offers two 6-week courses during Session D for newly admitted Haas transfer students (2 sections of UGBA 196). The program helps students refresh skills they need during their two years of classes at Haas and is intended to better prepare students for the rigorous coursework of the fall semester.

After accepting your offer of admission and opting in to Transfer Edge, you will need to visit the Haas New Transfer Website for next steps regarding Haas Summer Pre-Core enrollment. This website will be sent to you directly by Haas Undergraduate Admissions. Please reach out to a Haas Academic Counselor at ugmajoradvising@berkeley.edu with any questions regarding enrollment.



Berkeley Pre-Core Program Transfer Summer Program (Physics Department)

The Berkeley Pre-Core Transfer Summer Program is designed specifically to help prospective and newly admitted transfer students strengthen their skills to transition successfully into physics, astrophysics, and earth and planetary science (EPS) majors at UC Berkeley. Although this program is not mandatory, we highly encourage students to consider it as an opportunity to become better prepared to take on the academic rigor of these majors by building technical skills and a community of support and resources. The program will be held during Sessions B and D of UC Berkeley Summer Sessions.

After accepting your offer of admission and opting in to Transfer Edge, you will need to visit the [Berkeley Pre-Core Transfer Summer Program website](#) for next steps regarding enrollment. If you have any further questions regarding Pre-Core coursework, please contact physics-student-services@lists.berkeley.edu



Berkeley Pre-Core Program Transfer Summer Program (Physics Department)

The Berkeley Pre-Core Transfer Summer Program is designed specifically to help prospective and newly admitted transfer students strengthen their skills to transition successfully into physics, astrophysics, and earth and planetary science (EPS) majors at UC Berkeley. Although this program is not mandatory, we highly encourage students to consider it as an opportunity to become better prepared to take on the academic rigor of these majors by building technical skills and a community of support and resources. The program will be held during Sessions B and D of UC Berkeley Summer Sessions.



After accepting your offer of admission and opting in to Transfer Edge, you will need to visit the [Berkeley Pre-Core Transfer Summer Program website](#) for next steps regarding enrollment. If you have any further questions regarding Pre-Core coursework, please contact physics-student-services@lists.berkeley.edu

PAYMENT, CANCELLATION & ACADEMIC DEADLINES

It is important to understand the deadlines around summer course withdrawal and associated fees. Freshman and Transfer Edge students pay UC Berkeley undergraduate tuition of **\$419 per unit**. There are no registration fees or program fees, and there are no out-of-state or international fees for Freshman Edge or Transfer Edge participants.

In addition, all UC students pay a one-time only campus fee of \$434, which covers the cost of [ASUC](#) and other student services. This is a **mandatory fee** paid for campus services and passed via referendum by the student body of the University. All UC students not registered on the Berkeley campus for Spring 2024 also pay \$52.50 for the [2024 Class Pass](#), which allows free access to all [AC Transit buses](#) and campus shuttles.

Fees are not due at the time you select the program. You will receive a bill for your summer fees and a second bill for your fall fees that will appear on your [Cal Central](#) My Finances page under Billing Summary. After you register for courses, you should log-in to CalCentral, and click on View Transaction under Billing Summary on the My Finances tab. There, you'll see that your summer tuition and fees have been posted to your account following your registration, as well as the date the tuition and fees are due.

Please Note: For more specific information about important enrollment, withdrawal, and cancellation deadlines visit our [Summer Sessions Schedule and Deadlines](#) page. **Make sure to be aware of cancellation and withdrawal dates to avoid paying any unnecessary financial penalties.** For more information about fees and the Summer Sessions refund policy please go to our [Fees](#) and/or [Refund Policy](#) page, or reach out to program staff if you need clarification.

Remember that after opting-into Freshman/Transfer Edge, you must remain matriculated at Berkeley to be eligible for the UC tuition and fee rates. If there is a change to your admission status, please contact the Office of the Registrar & Office of Undergraduate Admissions to understand how this may impact your summer tuition and fees, as well as other implications.

FINANCIAL AID

To apply for financial aid, you will need to complete both the 2023-2024 and 2024-2025 Free Application for Federal Student Aid (FAFSA) or California Dream Act Application no later than June 1, 2024, and include UC Berkeley's federal school code (001312) on the applications. We strongly encourage FAFSA filers to use the [IRS Data Retrieval Tool](#) to ensure the accuracy of your application information.

Financial Aid Checklist

1. **Complete the 2023-2024 and 2024-2025 FAFSA or Dream Act Application no later than June 1, 2024.** Completing the FAFSA or Dream Act Application, along with your summer enrollment, allows the Financial Aid and Scholarships Office to determine your aid eligibility for the summer term on the UC Berkeley campus.
2. Enroll in a minimum of six units for summer (this usually amounts to two courses).
3. **Login to [CalCentral](#) (CalNet ID required) two to three business days after enrolling in your courses.** Under My Finances, select 2023-24 from the drop-down menu under Financial Aid and Scholarships and click *View Awards*. You can also review your financial aid awards and Cost of Attendance for summer on this page as well.
4. **Review your Communications and Tasks** to ensure that the aid office has received your 2023-24 FAFSA or Dream Act Application and that you have submitted all required documents.



To learn more:

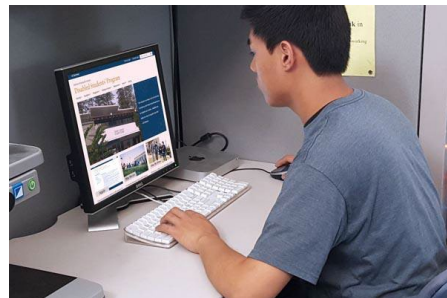
- Please visit the Summer Aid section of the [Financial Aid Website](#) for more information and FAQs.
- Pose questions to the aid office by 'opening a case' online or visiting the Virtual Front Desk of [Cal Student Central](#).
- Understand how your aid will be disbursed with [Financial Aid Payments and Refunds](#)

ACADEMIC & OTHER ACCOMMODATIONS

Registering with DSP

The Disabled Students' Program (DSP) is committed to ensuring that all students with disabilities have equal access to educational opportunities at UC Berkeley. DSP offers a wide range of services for students with disabilities. These services are individually designed, and based on the specific needs of each student as identified by disability specialists, development counselors, and accessibility experts.

Students are encouraged to disclose to Berkeley any accommodations (physical, academic, psychological etc.) they may need as early as possible, so that adequate steps can be taken to allow you to thrive as a student at Berkeley. In order to request accommodations, please visit the UC Berkeley Disabled Students' Program (DSP) website and follow the steps for "[New Students](#)".



PREPARATORY WEBINARS

Pre-Program Webinar



In early May, we will hold a Pre-Program Webinar for Freshman and Transfer Edge participants. This webinar will be focused on providing helpful information for course selection, information on campus resources and academic support networks, and options to virtually contact advisors and summer session staff.

During the webinar, we will also have advising mentors from The College of Letters and Sciences join us to give you information about academic considerations to keep in mind for summer course selection, virtual advising services, and resources you can utilize for a successful transition to Cal. Not in L&S? Not to worry, we will also cover information and resources for your college. We will also share special opportunities for you to take advantage of this summer, including workshops and social events to help connect you to campus and peers.

Welcome Webinars

In mid-May and mid-June (May for Session A/B students, June for Session C-F Students), we will hold two Welcome Webinars, focused on preparing you with the information you need to kick off your first summer semester at Berkeley off to a great start! We will provide you with the opportunity to connect with you peers in a virtual community building activity, share helpful resources for academic support, and have current Berkeley students share with you their insights and tips for new students.



Please Note: Both our Pre-Program and Welcome Webinars will be hosted on zoom and **recorded**. Recordings will be posted in our program bCourse (the Edge Student Portal), and shared with all participants via email. Should you be unable to attend, or simply want to refer back to all the great information, the recordings of these orientations will be very helpful!

SUMMER PROGRAMMING

Throughout the summer, we will host a variety of programming for Freshman and Transfer Edge students (**predominantly in-person and on and around campus**). These will be fun events like picnics on the glade, scavenger hunts across campus, and much more! Occasional virtual social events will also take place a few times throughout the summer to ensure any students taking exclusively online courses, or are participating internationally are able to connect with peers remotely.



We encourage all our students to participate in our summer social events to help connect with peers, build your campus community, and connect with students of shared identities. It's one of the best ways to get involved, find a sense of belonging, and lay down a strong foundation for your time at Berkeley!

You'll also be able to take advantage of our online Workshops, designed to familiarize you with the best Berkeley has to offer, including study abroad, summer minors, and opportunities for professional development. All of our summer workshops will be hosted on zoom, recorded, and shared with all program participants.

Please Note: Students will be notified of the calendar of preparatory webinars and summer programming in our program bCourse, and via email throughout the summer. Make sure to stay up to date on your bMail (@berkeley.edu) email inbox in order to stay informed of any upcoming webinars, workshops, and social events.



EDGE STUDENT PORTAL



As a Freshman/Transfer Edge student enrolled in summer courses, you will receive access to the Edge Student Portal, which will be hosted in [bCourses](#) (UC Berkeley's Learning Management System operated by Canvas). This will be your main content hub for program information and documents, a compendium of useful resources, information on program events, and access to video recordings of program orientations and workshops.



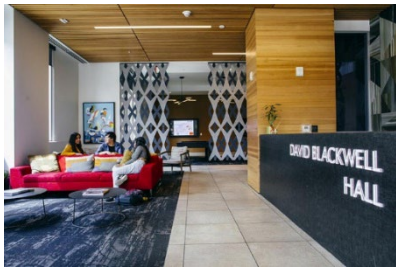
Refer to this useful space often as you prepare for your program experience, and throughout the summer to stay informed of program events and opportunities. Keep an eye out in your bMail inbox, as access to the Edge Student Portal will be granted to

students on a rolling weekly basis at the beginning of Summer Sessions, and once you have enrolled in summer courses. If you have questions regarding the Edge Student Portal, don't hesitate to reach out at summeredge@berkeley.edu.

SUMMER HOUSING

Cal Housing is happy to announce that all students who would like to live in Berkeley over the summer during their Freshman/Transfer Edge Program are welcome to reside in on-campus residence halls. If you wish to live on campus during the summer, make sure to register for [Summer Housing](#) **ASAP**. You will have the option of living in the residence halls or your own accommodations during summer. You must register individually by completing the online [Summer 2024 Residence Hall Housing Application](#) located on the Cal Housing website **as soon as possible**. Remember that if you live in campus housing during the summer, you will be required to adhere to public health policies designed to reduce transmission of COVID-19.

Please Note: The Freshmen Edge housing application is due on **Friday, May 10th (Session C) and Monday, May 20th (Session D), 5pm**; and the Transfer Edge housing application is due on **Sunday, June 2nd, 5pm** (in order to receive priority housing).



Housing is assigned on a first-come, first-served basis. **Because space is limited**, we recommend that you **apply for housing early** in order to ensure the best chance for you to secure a housing offer. Remember that summer housing is offered through the Cal Housing Office, not through the Freshman/Transfer Edge program. As such, please refer all questions regarding housing to [Cal Housing](#), preferably via email to summerhousing@berkeley.edu.

Find out more about the residence halls, including when and how to reserve a space, move-in dates, costs, and FAQs on the [Summer Housing](#) website.

INTERNATIONAL STUDENTS

If you are an international student who is admitted for fall semester and registering for summer courses through Freshman or Transfer Edge, there are special instructions that you must follow in accordance with the policies of the [Berkeley International Office](#). You must enroll in [full-time](#) units and request an I-20/DS-2019 that starts in summer and covers your degree program. Please follow the instructions available on the Berkeley International Office website for students '[Starting in Summer](#)'. Additionally, explore resources, tips, and helpful information for [new students](#).



Please Note: The Summer Sessions & Study Abroad office does not issue student visas or [Nonimmigrant Information Forms](#) (NIF). For questions about the NIF or visa application, documentation requirements, or processing stages, please contact the [Berkeley International Office directly](#), as they are the University office that issues these documents.

To learn more, please refer to the following resources:

- How to obtain the [Nonimmigrant Information Form](#)
- Review Berkeley International Office [Student Visa](#) webpage

STUDENT RESOURCES

[Identity Based Resource Guide](#)

UC Berkeley offers a wide-variety of resources to support, empower, and equip every student to thrive and succeed. [This](#) is an evolving resource document and does not contain all resources and support services available at Berkeley, but can be a great place to start in your exploration. We want to ensure that our Edge students are supported and feel connected to resources and services members of the Cal campus community. If you are seeking additional information and/or assistance please contact us directly at summeredge@berkeley.edu

[Student Technology Services](#)

Berkeley has a wealth of technology related resources, learning opportunities, and events to take advantage of. Explore different categories from assistive technology to remote resources, to WiFi, device lending, and zoom tips. Learn more about technology resources specifically for [new students](#).



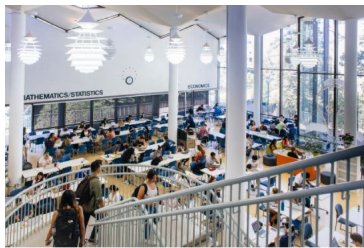
[University Health Services](#)

University Health Services (UHS) provides comprehensive medical, mental health and health promotion services to all Cal students. Students can use the medical services just as they would their regular doctor's office and urgent care center, in addition to e-health and tele-health services. Board-certified physicians, nurse practitioners, physician assistants, a nutritionist, and nurses staff the facility and online services. A comprehensive counseling center, staffed by psychiatrists, psychologists and licensed therapists, offers individual and group counseling, and includes a complete career counseling center.

[Counseling and Psychological Services](#)

The mission of Counseling and Psychological Services (CAPS) is to support the academic mission of the University by providing comprehensive counseling services to assist students with a variety of concerns including academic success, life management, career and life planning, and personal growth and development. The CAPS website contains more information on the many tele-mental health options CAPS offers (counseling, consultations, workshops, and more).

[The Student Learning Center](#)

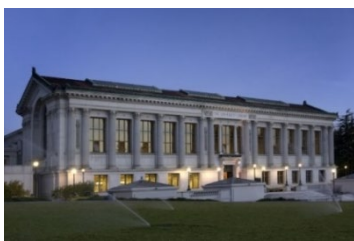


The Student Learning Center (SLC) is a community of 18 professional staff with disciplinary expertise, 300 trained undergraduate peer tutors, and 20 Graduate Student Instructors. The SLC is dedicated to fostering academic excellence and is driven by the philosophy that students working with students promotes academic and personal success. Summer virtual services include study groups and tutoring in math, science, and statistics; tutoring and coaching in writing.

[The Transfer Student Center](#)

The Transfer Student Center provides services to assist students who transfer to Cal from other colleges and universities with navigating the academic and cultural landscape of this research university. Their programs and services focus on supporting a successful transition, helping transfers build connections and community, and assisting students as they explore and pursue their academic and career goals.

[University of California, Berkeley Library](#)



Listed among the top 10 libraries in the US by the American Library Association, Berkeley's library, consisting of over 30 libraries on campus and virtual library catalogs and digital collections like OskiCat, offer more than 11 million volumes (including books, microforms, maps, newspapers), and a wide variety of tools to help students complement their classroom education.

[Cal Student Central](#)

At Cal Student Central, ask questions and take care of key university business all in one place. This is the central location to seek help and ask questions about financial aid and scholarships, fees and billing, payments, disbursements, registration and enrollment. Explore the different ways to contact Cal Student Central on [their website](#).

Career Center

The Career Center provides comprehensive resources, programs and individualized services on career readiness, internships, employment, and graduate school. On their website, you will find a wealth of helpful resources and tips



for everything from career exploration, to resume building, interview practice questions, and opportunities for virtual career counseling. The Career Center is also your best recourse to be notified of virtual networking events, career fairs, recruitment opportunities. On their site, you will also find information about registering for Handshake, where you can find thousands of jobs and internship listings, register for events, and access other resources for Berkeley students.

Basic Needs Center



The Basic Needs Center is committed to allowing every Berkeley student to find support and resources to battle food, housing, and economic insecurity. The Center has a variety of services: operating the Berkeley Food Pantry, providing emergency, supplemental food support to Berkeley students in need, assistance with CalFresh federal food benefit applications, financial aid counseling in relation to food and housing, and much more.

Basic Needs Center

CE3

The Centers for Educational Equity and Excellence are dedicated to help students transition, transform and transcend their lives into being students at UC Berkeley and for their lives after graduation. These centers are specifically ensuring that non-traditional students excel on campus, specifically students who have been historically marginalized. CE3 provides counseling programs, supplemental aid, and scholarships to support former foster youth, veterans, student parents, undocumented students, and transfer students of all ages and life experiences. The types of programs offered are to improve Access and Opportunity, supporting Independent Students, as well as Transfer Students.

LEAD Center

The LEAD Center is a place where leadership, engagement, advising, and development is centered within UC Berkeley. It's the hub for student involvement and co-curricular advising, the main goal of this space is to help

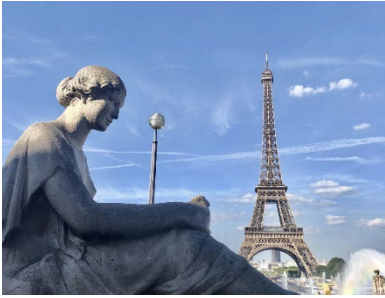


students explore their interests, pursue their passions, and create community at Cal. The LEAD Center is a branch of the ASUC Student Union on campus, so through this center students can learn more about student organizations, Greek life, student government, bridges MRC, Cal Debate and many more programs and resources for student involvement and success.

Recreational Sports

Cal Recreational Sports is dedicated to enhancing the knowledge, wellness, fitness, personal skills and quality of life for students, faculty, staff, and the community. To keep students going near or far, Rec Sports offers a collection of free resources, classes, fitness consultations, and on-demand videos to UC Berkeley students.

Study Abroad



UC Berkeley offers various programs that allow students to seek unique global academic experiences in over 40 countries! Through UC Education Abroad Programs, Summer Abroad Programs, and Global Internships, students are able to explore options to find a program that best fits their personal, academic, and career goals. Students are advised throughout the process of program selection, financing, and the application process. Explore your study abroad options (including virtual programs) on the Berkeley Study abroad website, where you can also find information on how to connect with study abroad advisors.