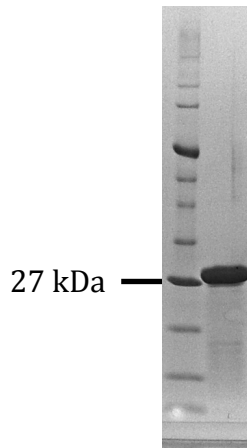


MacroLab TEV protease information

Brief methods

We express a double mutant (L56V / S135G) pRK793 plasmid in Rosetta2(DE3)pLysS cells. 2L of cells are purified on a HiTrap Ni column, and the product is desalted with a 26/10 column. Final purification is performed on a HiTrap Capto-S column. Typical purity is shown below:



Your TEV protease

We aliquot every batch at 2mg/mL, with 0.5mg/tube. We guarantee 35mg minimum per box.

TEV is frozen in the following buffer:

25mM HEPES pH 7.5

400mM NaCl

10% glycerol

1mM DTT

We recommend cleaving your protein for at least 2 hr at room temperature or overnight at 4°C with a 1:20 (weight/weight) TEV/substrate ratio, or a 1:50 molar ratio. Some substrates may require more TEV. TEV is not inhibited by PMSF (1mM), pepstatin A (1mM), or complete protease inhibitor cocktail (Roche).

Each batch of TEV we produce is tested and known to cleave >90% of a substrate protein at a molar ratio of 1:50 in 2 hr at room temperature.

Special handling instructions

TEV is exceptionally prone to aggregation, so use it as soon as possible after thawing.