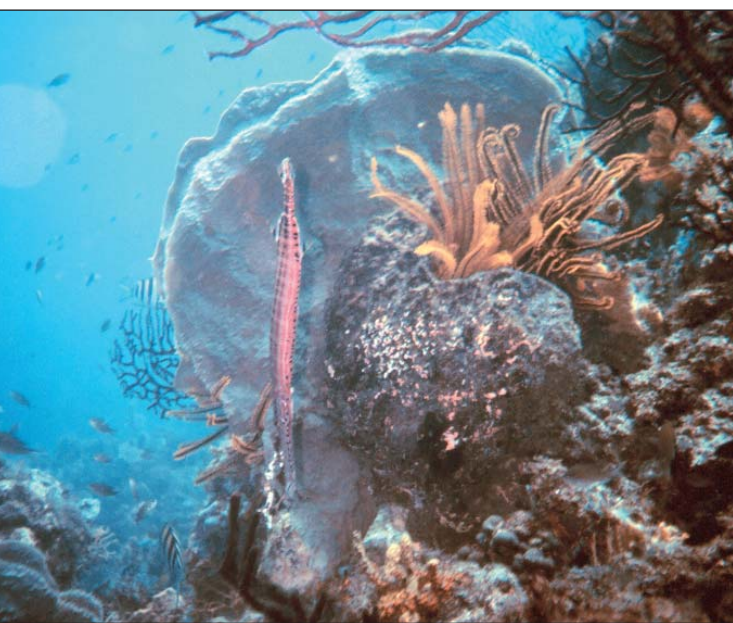


Causes of Coral Reef Degradation

IN THEIR REPORT "GLOBAL TRAJECTORIES OF the long-term decline of coral reef ecosystems" (15 Aug., p. 955), J. M. Pandolfi *et al.* advocate a novel interpretation of the timing and causes of the worldwide decline of reef-building corals. Expanding on an earlier paper (1), they conclude that corals have been in decline for centuries and that overfishing was the leading cause. They consider the recent impacts of coral disease and bleaching to be ancillary effects and argue that reef ecosystems will not survive without immediate, draconian protection from fishing. Curiously, a Review by T. P. Hughes *et al.* in the same issue ("Climate change, human impacts, and the resilience of coral reefs," 15 Aug., p. 929) concludes that climate change and disease are the primary agents of increased coral mortality and that degraded reefs will survive, albeit with altered species composition. Pandolfi, Hughes, and J. B. C. Jackson are all authors on the two conflicting papers, rendering their message difficult to discern.



Pandolfi *et al.*'s evidence for the early decline of corals resides in a list of more than 400 references in an online supplement. That supplement would have been more useful had it described the method by which coral condition was ranked. Information on variances and sample sizes of the historical data should also have been included.

The proximal causes of the decline in coral cover on Caribbean reefs were recent disease outbreaks and hurricanes, whereas in the Pacific, coral mortality increased markedly because of recent, El Niño–Southern Oscillation–induced bleaching episodes [Hughes *et al.*; (2)]. Paleontological studies in Belize (3), the equatorial eastern Pacific (4), and Indonesia (5) suggest that corals grew actively and continuously for millennia until recent decades, although there is also evidence of localized reef degradation from terrigenous input dating to the time of European colonization (6).

None of this falsifies the hypothesis that the recent collapse of reef systems was driven by fishing pressure more than a century ago, but the burden of proof rests with Pandolfi *et al.* The hypothesis that overfishing caused corals to decline is argued by default, and no cogent mechanistic explanation is offered. Alternative explanations need to be falsified, including the release of nutrients and sediment as rising sea level flooded coastal areas centuries to millennia ago. If the authors are implying that overfishing removed herbivores earlier than suspected, releasing algae to overgrow corals at that time, they must reconcile their scenario with the observed transition from coral to algal dominance in the Caribbean beginning in the 1980s (1).

Protecting vertebrates from overexploitation is clearly a laudable goal. It is imperative, however, that policy-makers directly address the range of factors that are decimating coral populations and hindering their recovery. We are certain that Pandolfi *et al.* agree, and we encourage them to develop their argument more comprehensively.

RICHARD B. ARONSON,^{1*}

JOHN F. BRUNO,² WILLIAM F.

PRECHT,³ PETER W. GLYNN,⁴

C. DREW HARVELL,⁵

LES KAUFMAN,⁶ CAROLINE S. ROGERS,⁷

EUGENE A. SHINN,⁸ JOHN F. VALENTINE¹

¹Dauphin Island Sea Laboratory, 101 Bienville Boulevard, Dauphin Island, AL 36528, USA.

²Department of Marine Sciences, University of North Carolina at Chapel Hill, CB #3300, 12-2 Venable Hall, Chapel Hill, NC 27599–3300, USA.

³Ecological Sciences Program, PBS&J, 2001 NW

Letters to the Editor

Letters (~300 words) discuss material published in *Science* in the previous 6 months or issues of general interest. They can be submitted by e-mail (science_letters@aaas.org), the Web (www.letter2science.org), or regular mail (1200 New York Ave., NW, Washington, DC 20005, USA). Letters are not acknowledged upon receipt, nor are authors generally consulted before publication. Whether published in full or in part, letters are subject to editing for clarity and space.

107th Avenue, Miami, FL 33172, USA. ⁴Division of Marine Biology and Fisheries, Rosenstiel School of Marine and Atmospheric Science, University of Miami, Miami, FL 33149, USA. ⁵Department of Ecology and Evolutionary Biology, Cornell University, E-321 Corson Hall, Ithaca, NY 14853, USA. ⁶Department of Biology, Boston University, 5 Cummington Street, Boston, MA 02215, USA. ⁷U.S. Geological Survey, Caribbean Field Station, St. John, USVI 00830. ⁸U.S. Geological Survey Center for Coastal Geology, 600 4th Street South, St. Petersburg, FL 33701, USA.

*To whom correspondence should be addressed. E-mail: raronson@disl.org

References

1. J. B. C. Jackson *et al.*, *Science* **293**, 629 (2001).
2. C. Wilkinson, Ed., *Status of Coral Reefs of the World: 2000* (Australian Institute of Marine Science, Townsville, Australia, 2000).
3. R. B. Aronson *et al.*, *Ecol. Monogr.* **72**, 233 (2002).
4. P. W. Glynn, G. M. Wellington, *Coral Reefs of the Galapagos Islands* (Univ. of California Press, Berkeley, CA, 1983).
5. N. J. Abram *et al.*, *Science* **301**, 952 (2003).
6. M. McCulloch *et al.*, *Nature* **421**, 727 (2003).

Response

IN OUR REPORT, WE SHOWED THAT CORAL reef ecosystems were degraded long before more recent changes attributable to climate change or disease. Aronson *et al.* appear to discount historical data, preferring instead to assume that reefs were pristine until recently. Their comments focus on corals, which we show to have changed more recently than six other ecological guilds (categories of biota). Yet even for corals, there is clear evidence that recent changes represent an ongoing degradation that long predates modern ecological studies. While Aronson *et al.* attribute loss of coral cover in the Caribbean partially to hurricanes, it is the recent lack of recovery of contemporary Caribbean reefs following hurricanes that is the issue. We argued that when herbivores are lost from the system, disturbances from which corals are usually able to recover become more problematic, because faster-growing algae are able to exclude them. A previous contribution highlighted significant Caribbean coral decline well before the beginning of the 1980s [Fig. 2B in (1)], so decline is not simply a matter of the recent change in dominance from corals to

CREDITS: ANTHONY R. PICCOLO, NOAA/NMOC

algae. Although we agree that bleaching and disease are becoming more prevalent, the ability of reefs to absorb these impacts will clearly depend on the extent to which they are already degraded [our Report; (1)].

Aronson *et al.* identify coral bleaching and disease as “proximal” causes of coral decline, based on studies addressing coral cover during the past few decades. We show that these so-called proximal causes are not the ones that have acted over long time periods or that have caused the most intense degradation of reefs and associated ecosystems. Indeed, Aronson *et al.*'s assertions represent exactly the kind of conclusion that can arise without historical perspective.

Our study, which represents a significant departure from more traditional studies in experimental ecology (which use continuous, unidimensional data sets that are neatly described by a mean and variance) demonstrates that the ultimate causes of coral reef ecosystem decline are more subtle than recent proximal ones and reach further back in time than events observed in the past few decades. We agree with Aronson *et al.* that policy-makers need to consider all relevant factors in addressing coral reef degradation. However, history can be neither ignored nor changed, and shooting the messenger will solve nothing.

JOHN M. PANDOLFI,¹ ROGER H. BRADBURY,² ENRIC SALA,³ TERENCE P. HUGHES,⁴ KAREN A. BJORN DAL,⁵ RICHARD G. COOKE,⁶ DEBORAH MCARDLE,⁷ LOREN MCCLENACHAN,³ MARAH J. H. NEWMAN,³ GUSTAVO PAREDES,³ ROBERT R. WARNER,⁸ JEREMY B. C. JACKSON^{3,6}

¹Department of Paleobiology, MRC-121, National Museum of Natural History, Smithsonian Institution, Post Office Box 37012, Washington, DC 20013-7012, USA. ²Centre for Resource and Environmental Studies, Australian National University, Canberra, ACT 0200, Australia. ³Center for Marine Biodiversity and Conservation, Scripps Institution of Oceanography, La Jolla, CA 92093, USA. ⁴Centre for Coral Reef Biodiversity, School of Marine Biology, James Cook University, Townsville, QLD 4811, Australia. ⁵Archie Carr Center for Sea Turtle Research, Department of Zoology, University of Florida, Post Office Box 118525, Gainesville, FL 32611, USA. ⁶Center for Tropical Paleocology and Archaeology, Smithsonian Tropical Research Institute, Box 2072, Balboa, Republic of Panama. ⁷California Sea Grant, University of California Cooperative Extension, Santa Barbara, CA 93105, USA. ⁸Department of Ecology, Evolution, and Marine Biology, University of California, Santa Barbara, CA 93106, USA.

Response

IN OUR REVIEW, WE SUMMARIZED CURRENT knowledge of the degraded status of coral reefs and of the human threats to reefs. We

also identified new directions for research to inform the management of these vital natural resources. Aronson *et al.* misinterpret our Review by claiming that our conclusions (on the importance of overfishing on coral reefs) conflict with those of the accompanying Report by Pandolfi *et al.* In this Report, Pandolfi *et al.* emphasize the long trajectory of reef decline, while we focused more on contemporary threats and future solutions. Until recently, the direct and indirect effects of overfishing and pollution from agriculture and land development have been the major drivers of massive and accelerating decreases in abundance of coral reef species. We argued that human impacts and the increased fragmentation of coral reef habitat have undermined reef resilience, making them much more susceptible to current and future climate change. In particular, we presented clear, unambiguous evidence that overharvesting of herbivorous fishes can impair the resilience of coral reefs and inhibit their recovery from bleaching and other disturbances, leading to a phase shift to algal-dominated reefs. Consequently, our Review contained an entire section on the benefits of No-Take Areas (NTAs; where fishing is prohibited) and the need for effective management of fish stocks and of the ecosystem functions that fishes provide both inside and outside NTAs. We called for the establishment of 25% of reefs as NTAs. We do not consider our findings to be in conflict with those of Pandolfi *et al.* Rather, we placed the role of overfishing in the context of the range of current environmental pressures faced by reefs, and we called for a pluralistic approach to reef conservation that includes protection of fish stocks as a major component.

T. P. HUGHES,¹ A. H. BAIRD,¹ D. R. BELLWOOD,¹ S. R. CONNOLLY,¹ C. FOLKE,² R. GROSBERG,³ O. HOEGH-GULDBERG,⁴ J. B. C. JACKSON,^{5,6} J. KLEYPAS,⁷ J. M. LOUGH,⁸ P. MARSHALL,⁹ M. NYSTRÖM,² S. R. PALUMBI,¹⁰ J. M. PANDOLFI,¹¹ B. ROSEN,¹² J. ROUGHGARDEN¹³

¹Centre for Coral Reef Biodiversity, James Cook University, Townsville, QLD 4811, Australia.

²Department of Systems Ecology, Stockholm University, SE-106 91 Stockholm, Sweden. ³Center for Population Biology, Division of Biological Sciences, Section of Evolution and Ecology, University of California, Davis, 1 Shields Avenue, Davis, CA 95616, USA. ⁴Centre for Marine Studies, University of Queensland, St Lucia, QLD 4070, Australia. ⁵Scripps Institution of Oceanography, University of California, San Diego, La Jolla, CA 92093, USA. ⁶Smithsonian Tropical Research Institute, Box 2070, Balboa, Republic of Panama.

⁷National Center for Atmospheric Research, Post Office Box 3000, Boulder, CO 80307, USA.

⁸Australian Institute of Marine Sciences, PMB #3,

AAAS Travels

We invite you to travel with AAAS in the coming year. You will discover excellent itineraries and leaders, and congenial groups of like-minded travelers who share a love of learning and discovery.

India Wildlife Safari January 23- February 7, 2004

A magnificent look at the exquisite antiquities and national parks of India, from the Taj Mahal, Agra Fort & Khajuraho Temples to tigers and Sarus cranes! \$3,495 + air.



Alaska Aurora Borealis March 2004 (3 departures)

Discover Alaska in winter including 20,320-ft Mt. McKinley. See ice sculptures in Fairbanks and three nights of the Aurora Borealis at a special Aurorium with lectures. \$2,395 + air.



Wild & Prehistoric France April 13-25, 2004

Discover wild areas & prehistoric sites in Haute Provence, the Massif Central, and Dordogne, including Lascaux II, the Cirque de Navacelles, Vezere Valley, & Les Baux. \$3,295 + air.



Aegean Odyssey May 17-31, 2004

Our classic adventure to explore the history of Western Civilization in Athens, Delphi, Delos, Santorini, & Knossos. \$3,695 + air.



Transit of Venus & Lake Baikal June 3-14, 2004

Join a Russian solar astronomer to see this rare astronomical event at the Solar Observatory overlooking Lake Baikal. Then explore Baikal by ship for five days. Also see Moscow & Star City. \$3,295 + air.

Call for trip brochures & the Expedition Calendar
(800) 252-4910

AAAS Travels

17050 Montebello Road
Cupertino, California 95014

Email: AAASinfo@betchartexpeditions.com

LETTERS

Townsville, QLD 4810, Australia. ⁹Great Barrier Reef Marine Park Authority, Post Office Box 1379, Townsville, QLD 4810, Australia. ¹⁰Department of Biological Sciences, Stanford University, Hopkins Marine Station, Pacific Grove, CA 93950, USA.

¹¹Department of Paleobiology, National Museum of Natural History, Smithsonian Institution, Post Office Box 37012, Washington, DC 20013, USA.

¹²Department of Zoology, The Natural History Museum, Cromwell Road, London SW7 5BD, UK.

¹³Department of Biological Sciences, Stanford University, Stanford, CA 94305, USA.

Bio2010 Misinterpreted?

THE NATIONAL RESEARCH COUNCIL'S (NRC) study *Bio2010: Transforming Undergraduate Education for Future Research Biologists (I)* presents recommendations for educating undergraduate students planning careers in molecular biology, cell biology, and other fields central to biomedical research. This emphasis is the result of

the charge given by the sponsors (NIH and Howard Hughes Medical Institute) to the authoring committee and is made abundantly clear in the text, even if it is not apparent in the title of the report.

I have been informed that some college and university educators and administrators have used this report to justify the diminution—or even the elimination—of ecology, population and evolutionary biology, and other nonbiomedical subject areas in undergraduate life sciences programs and curricula. This is certainly not an appropriate response to the committee's conclusions.

Consider the following quotation from the report's Preface: "Changes [to the life sciences curriculum] cannot be made solely to benefit future biomedical researchers. The impact on undergraduates studying other types of biology, as well as other sciences, cannot be ignored as reforms are considered" (pp. ix–x). Moreover, even though the report suggests course options for students interested in only one type of biology, these options explicitly incorporate coursework and electives from throughout the life sciences (e.g., evolutionary biology and ecology), as well as from other sciences.

Students are often exploring a variety of career options as they advance through a

life sciences curriculum, and the report stresses the importance of exposing them to the breadth of biology:

"The Committee... has concluded that the best preparation for the biomedical research of the future is a broadly based education in biology with a strong foundation in the physical sciences and mathematics. A well-educated biology major should understand the principles of population and evolutionary biology, ecology, cognitive neurobiology, and plant biology, irrespective of his or her future research area. The connections between biomedical research and other sciences will become more intimate and mutually reinforcing in the years ahead. Most compelling, the fundamental unity of biology speaks strongly against the desirability of compartmentalization too early in one's education" (p. 24).

Bio2010 also recommends that new ways be found to help life sciences faculty learn

“ [S]ome college and university educators and administrators have used this report [*Bio2010*] to justify the diminution—or even the elimination—of ecology, population and evolutionary biology, and other nonbiomedical subject areas in undergraduate life sciences programs and curricula. This is certainly not an appropriate response to the committee's conclusions.

—ALBERTS

more about the emerging evidence and practices that can help improve undergraduate teaching and student learning, including an annual Summer Institute for biology faculty. A successful experiment focused on this last recommendation is described in the accompanying Policy Forum by

Wood and Gentile (2), co-chairs of the organizing committee for the Institute.

I urge those who might use *Bio2010* in restructuring undergraduate study in the life sciences to read this important report carefully.

BRUCE ALBERTS

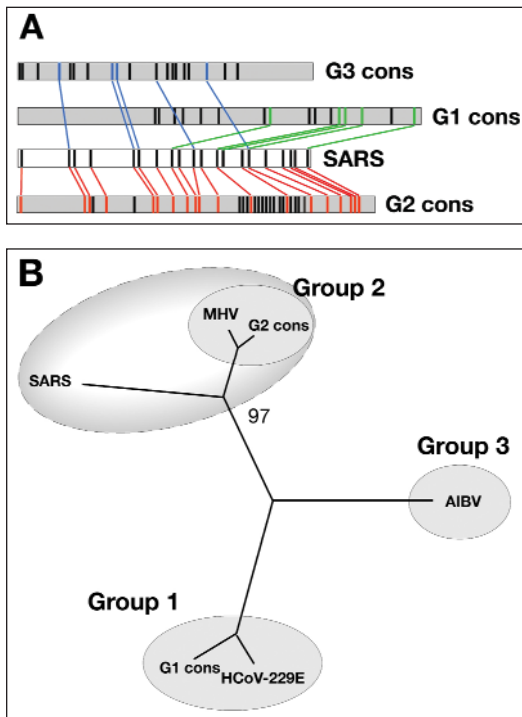
President, National Academy of Sciences, 2101 Constitution Avenue, NW, Washington, DC 20418, USA.

References

1. National Research Council, *Bio2010: Transforming Undergraduate Education for Future Research Biologists* (National Academies Press, Washington, DC, 2003) (available at <http://books.nap.edu/catalog/10497.html>).
2. W. B. Wood, J. M. Gentile, *Science* **302**, 1510 (2003).

Phylogeny of the SARS Coronavirus

SEVERAL PAPERS HAVE BEEN PUBLISHED ON THE genomic sequence and phylogeny of the severe acute respiratory syndrome (SARS) coronavirus (1–4). We have determined the



(A) Schematic representation of cysteine positions in the NH₂-terminal domain of the SARS-CoV spike protein in comparison with the corresponding consensus sequences from group 1, 2, and 3 coronaviruses (G1 cons, G2 cons, and G3 cons). Colored lines connect conserved cysteines. **(B)** Neighbor-joining network inferred from the NH₂-terminal domain of the spike proteins. The value at node indicates number of 100 bootstrap trees presenting clusters distal of node. The same result was obtained when we performed a maximum parsimony analysis. The unrooted tree shows that the SARS-CoV virus clusters with group 2 coronaviruses. Similar trees were obtained using Nsp1, matrix, and nucleocapsid proteins. Branch lengths are proportionate to amino acid changes. MHV, murine hepatitis virus; AIBV, avian infectious bronchitis virus; HCoV-229E, human coronavirus 229E.

nucleotide sequence of the SARS coronavirus FRA isolate (accession number AY310120) and found the overall genome organization and predicted proteins to be in agreement with published studies. We also performed a phylogenetic analysis. Using conserved regions of the virus such as the polymerase gene and standard algorithms, we found that the new virus is not related to the known type 1, 2, and 3 coronaviruses and represents a novel, previously unknown type of coronavirus, in agreement with published studies.

However, when we examined the NH₂-terminal domain of the SARS spike protein, which in other coronaviruses is known to harbor the receptor-binding domain and to be responsible for the tissue tropism of the virus, we made the striking observation that 19 out of the 20 cysteines

are spatially conserved with those of the group 2 consensus sequence. In marked contrast, only five of them are conserved in group 1 and group 3 sequences (see panel A of figure). Encouraged by this observation, we performed a phylogenetic analysis using the neighbor-joining algorithm on the amino acid sequences of the poorly conserved proteins such as spike, Nsp1, matrix, and nucleocapsid. In all cases, we found that SARS-CoV clustered more frequently with group 2 coronavirus (see panel B of figure), showing that a statistically significant relationship between SARS and group 2 coronavirus is found in different regions of the genome. Our findings suggest that group 2 coronaviruses and SARS are closely related and are likely to share a common ancestor. This observation makes unlikely an avian origin of the virus because avian coronaviruses are mostly type 3, and is consistent with the finding that a virus similar to SARS is found in mammalian species used as food in China (5). After submission of this Letter, Snijder *et al.* published a phylogenetic analysis based on the polymerase gene in which they reported that SARS-CoV derives from an early split of type 2 coronavirus (6). Our observation allows a rational, hypothesis-driven approach to study the origin of the virus and the animal species involved in transmission and to design measures to prevent and contain the infection.

MARKUS EICKMANN,¹ STEPHAN BECKER,¹
HANS-DIETER KLENK,¹ HANS WILHELM
DOERR,² KONRAD STADLER,³
STEFANO CENSINI,³ SILVIA GUIDOTTI,³
VEGA MASIGNANI,³ MARIA SCARSELLI,³
MARIROSA MORA,³ CLAUDIO DONATI,³
JANG H. HAN,⁴ HYUN CHUL SONG,⁴
SERGIO ABRIGNANI,³ ANTONELLO COVACCI,³
RINO RAPPUOLI^{3*}

¹Institute for Virology, University of Marburg, 35037 Marburg, Germany. ²Institute of Medical Virology, University of Frankfurt, 60596 Frankfurt, Germany. ³IRIS, Chiron Vaccines, 53100 Siena, Italy. ⁴Chiron Corporation, Emeryville, CA 94608-2916, USA

*To whom correspondence should be addressed.
E-mail: rino_rappuoli@chiron.it

References

1. C. Drosten *et al.*, *N. Engl. J. Med.* **348**, 1967 (2003).
2. M. A. Marra *et al.*, *Science* **300**, 1399 (2003).
3. J. S. Peiris *et al.*, *Lancet* **361**, 1319 (2003).
4. P. A. Rota *et al.*, *Science* **300**, 1394 (2003).
5. Y. Guan *et al.*, *Science* **302**, 276 (2003).
6. E. J. Snijder *et al.*, *J. Mol. Biol.* **331**, 991 (2003).