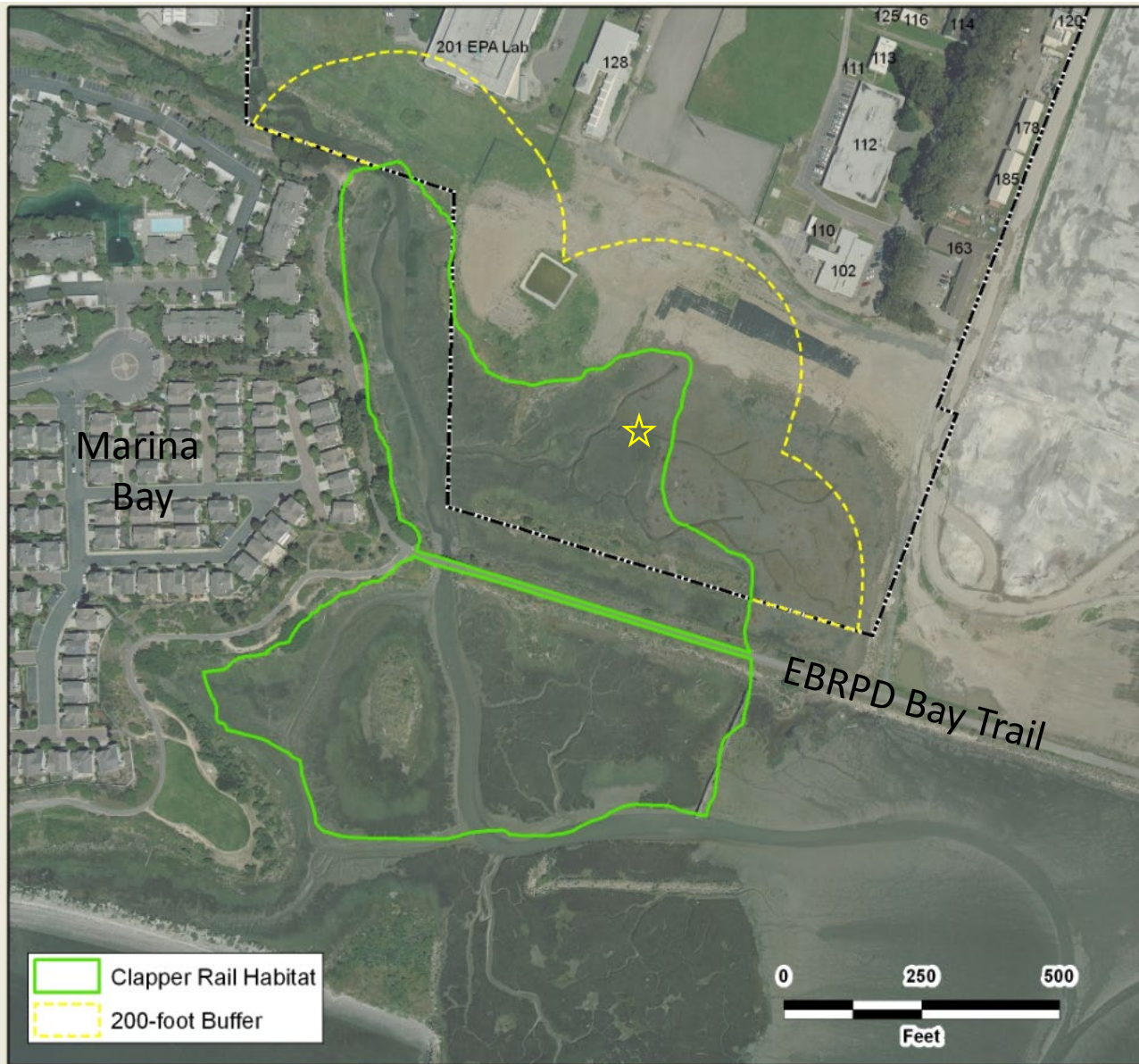




Figure 5. Recent observations and field surveys have indicated that the tidally influenced marshes enclosed within the red outline were occupied by CCRs in 2010.

Orange outline shows 2015 extension of habitat into Baxter Creek area at S.51 st.



Berkeley Global
Campus
(Richmond Field
Station) Western
Stege Marsh
Approximate
Ridgway's rail
habitat
2015

Stege Marsh Ridgway's rails 2015 photos



Michael Eichelberger May 2015



Michael Eichelberger May 2015



Karl Hans May 2015



August 4, 2015
East Stege Marsh at
Baxter Creek



Karl Hans August 4, 2015

Find the Rail (at Baxter Creek, East Stege Marsh September 2, 2015)



Karl Hans September 2, 2015