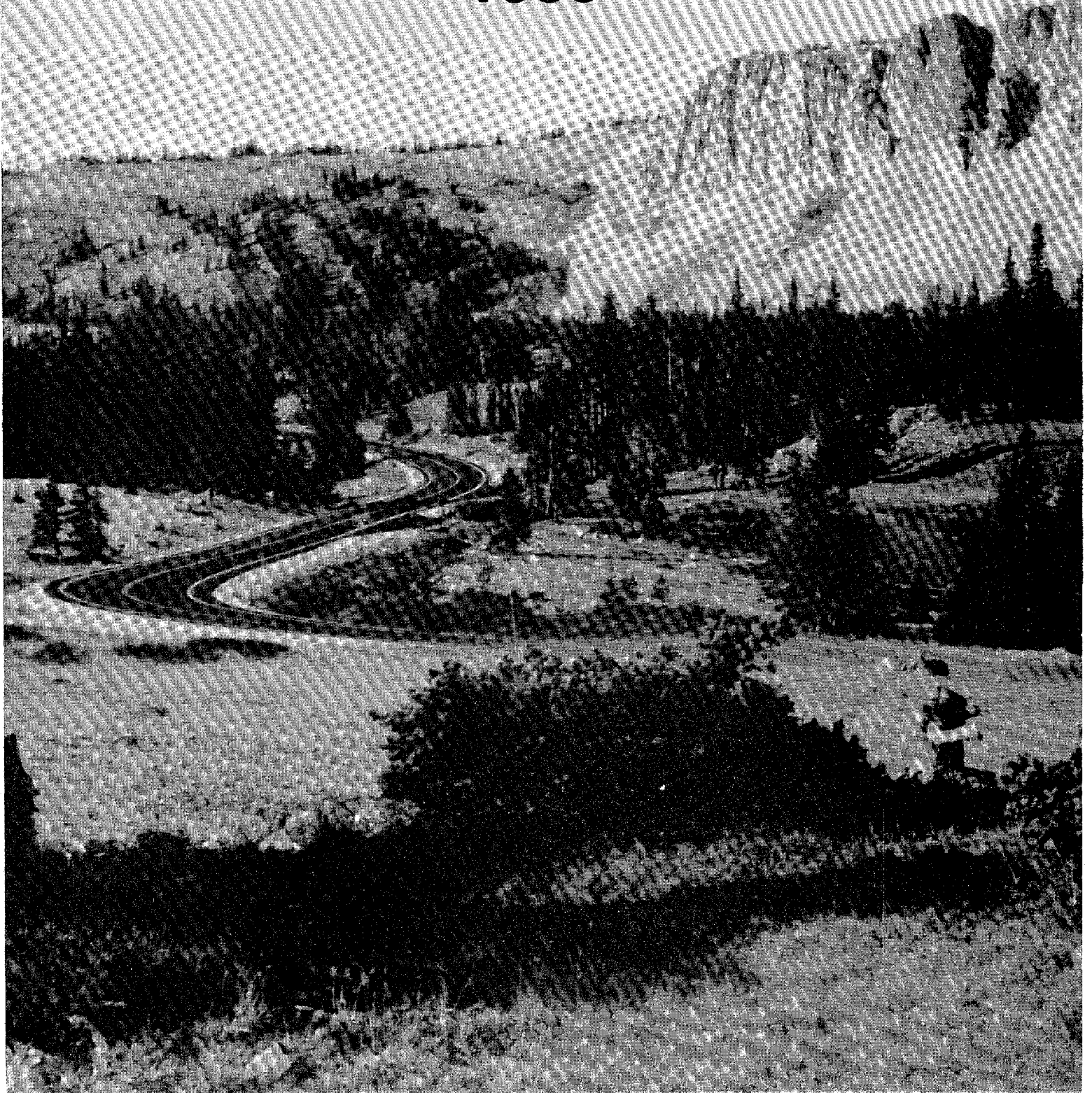




U.S. Department
of Transportation
**Federal Highway
Administration**

Selected **Highway Statistics** and Charts **1988**



SELECTED HIGHWAY STATISTICS AND CHARTS -- 1988

MOTOR FUEL - Highway Use of Gasoline up 1.3 Percent; Special Fuels (Diesel) Use up 5.2 Percent

Highway use of motor fuel in 1988 totaled 129.9 billion gallons, an increase of 1.9 percent from 1987. In 1989, highway use of motor fuel is expected to increase by about 0.9 percent. Net motor-fuel revenues increased 8.2 percent from 1987, reflecting a number of tax increases which took effect in 1988 as well as increased motor-fuel consumption. Motor-fuel revenues are expected to increase by about 4.1 percent in 1989, reflecting additional tax rate increases in 1989 and the 0.9 percent increase in motor fuel consumption.

The increase in motor-fuel usage reflects a continued growth in travel and occurred despite an increase in the fuel efficiency of the vehicle fleet from 15.06 MPG in 1987 to 15.60 in 1988.

MOTOR-VEHICLE REGISTRATIONS - Total Motor-Vehicle Registrations Exceed 184 million in 1988.

Motor-vehicle registrations in the Nation increased from 178,954,599 in 1987 to 184,396,732 in 1988, an increase of 3.0 percent. Motor-vehicle and motor-carrier revenues increased 4.5 percent. Motor-vehicle registrations for 1989 are expected to exceed 1988 by 2.3 percent for a total of 188,669,000. Motor-vehicle and motor-carrier revenues are expected to increase by 3.0 percent in 1989.

DRIVER LICENSING - Number of Licensed Drivers up 1.1 Percent

The total of 162.9 million licensed drivers in 1988 reflects an increase of 1.1 percent. The number of female drivers increased at more than twice the rate of male drivers.

HIGHWAY FINANCE - Total Highway-User Imposts Increased by \$2.0 Billion in 1988

Highway-user impost, consisting of motor-fuel taxes, motor-vehicle taxes and fees, and highway tolls, increased by \$2.0 billion from 1987 to 1988. These revenues totaled \$41.6 billion and accounted for 60.3 percent of total receipts for highways by all units of government in 1988. Total receipts were \$69.0 billion, an increase of more than \$3.6 billion over 1987. Receipts from nonuser sources--general revenue, property taxes, investment income and miscellaneous receipts--totaled \$23.0 billion, a 5.7 percent decrease from 1987. Bond proceeds for 1988 were \$4.4 billion, an increase of \$600 million from 1987.

Total highway expenditures amounted to \$68.6 billion in 1988, up \$3.4 billion from 1987. Capital outlay increased by \$2.3 billion, or 7.5 percent, to \$33.0 billion. Inflation in highway construction prices in 1988 resulted in no real increase in highway capital outlay. Expenditures for highway maintenance and traffic services amounted to \$19.0 billion, an increase of \$817 million, or 4.5 percent; however, inflation reduced real expenditures to a 0.6 percent increase over 1987.

For the 50 States and the District of Columbia, highway-user impost accounted for 79.8 percent of the \$34.3 billion in State highway receipts for 1988. State highway receipts from user fees increased by \$782 million while receipts from nonuser sources increase by \$276 million. Nonuser sources accounted for 13.2 percent of State receipts for highways. Bond proceeds totaled \$2.4 billion, an increase of \$457 million from 1987. Bond proceeds exclude refunding. State highway programs totaled 41.6 billion (excluding grants-in-aid to local governments) for 1988, an increase of \$1.9 billion over 1987. Highway capital outlay--\$24.6 billion--accounted for 59.2 percent of total State expenditures, an increase of \$1.7 billion from 1987.

ROADWAY MILEAGE AND HIGHWAY TRAVEL - Travel up 5.5 Percent

Public roads and streets in the United States, as of December 31, 1988, totaled approximately 3.87 million miles, a decrease of 0.1 percent from 1987.

Highway travel in the United States increase to an estimated 2,026 billion vehicle-miles in 1988--an increase of about 5.5 percent from the previous year.

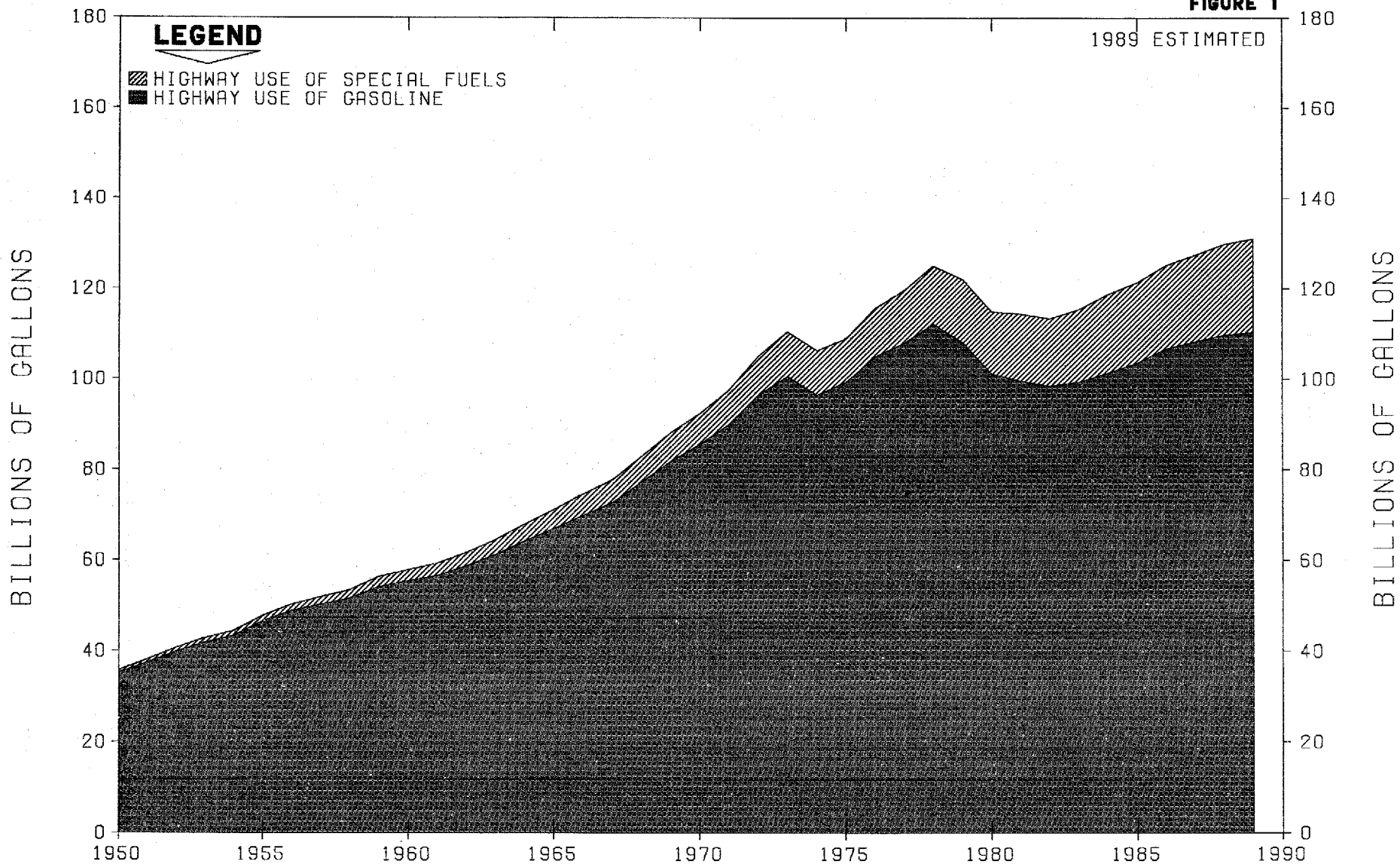
The Interstate System accounts for about 1 percent of the Nation's total route mileage and carries 22 percent of the travel. The arterial class highways (including Interstate) represent 10 percent of the mileage and carry 70 percent of the travel. All arterial and collector highways combined, which include 31 percent of the Nation's mileage, carry 86 percent of the travel.

MISCELLANEOUS - Expenditures per mile averaged \$26,970 and \$8,160 per mile for capital outlay and maintenance, respectively. State highway-user revenue per 1,000 vehicle-miles of travel averaged \$15.81 for all States.

HIGHWAY USE OF MOTOR FUEL IN THE UNITED STATES

1950 - 1989

FIGURE 1



3

MOTOR-FUEL USE

(THOUSANDS OF GALLONS)

TABLE 5898-1
OCTOBER 1989

STATE	1988 1/				1989 ESTIMATE 2/				HIGHWAY PERCENT CHANGE 1989 1988
	HIGHWAY USE			NON-HIGHWAY GASOLINE	HIGHWAY USE			NON-HIGHWAY GASOLINE	
	GASOLINE	SPECIAL FUEL	TOTAL		GASOLINE	SPECIAL FUEL	TOTAL		
ALABAMA	1,982,876	481,691	2,464,567	57,098	2,056,000	549,000	2,605,000	59,000	5.7
ALASKA	209,759	43,362	253,121	30,421	206,000	33,000	241,000	30,000	-4.8
ARIZONA	1,656,460	303,839	1,960,299	43,147	1,670,000	296,000	1,966,000	43,000	-0.2
ARKANSAS	1,209,871	390,766	1,600,639	43,808	1,189,000	436,000	1,624,000	43,000	1.5
CALIFORNIA	12,555,731	1,782,723	14,338,454	340,908	12,845,000	1,863,000	14,708,000	349,000	2.6
COLORADO	1,506,623	191,352	1,697,975	39,450	1,481,000	173,000	1,654,000	39,000	-2.6
CONNECTICUT	1,359,107	207,851	1,566,958	32,300	1,354,000	202,000	1,556,000	32,000	-0.7
DELAWARE	334,242	56,124	390,366	12,759	336,000	59,000	395,000	13,000	1.2
DIST. OF COL.	180,276	23,327	203,603	4,149	179,000	23,000	202,000	4,000	-0.8
FLORIDA	5,748,436	781,715	6,530,151	281,739	5,846,000	796,000	6,582,000	287,000	0.8
GEORGIA	3,435,023	841,981	4,277,004	107,701	3,497,000	902,000	4,399,000	110,000	2.9
HAWAII	348,963	22,999	371,962	20,207	367,000	23,000	390,000	21,000	4.8
IDAHO	436,596	100,908	537,504	39,489	441,000	116,000	557,000	40,000	3.6
ILLINOIS	4,803,480	783,017	5,586,497	114,264	4,731,000	829,000	5,560,000	113,000	-0.5
INDIANA	2,645,729	635,735	3,282,464	84,600	2,593,000	713,000	3,306,000	83,000	0.7
IOWA	1,288,803	338,971	1,627,774	92,285	1,320,000	346,000	1,666,000	95,000	2.3
KANSAS	1,254,037	302,644	1,556,681	55,614	1,230,000	295,000	1,525,000	55,000	-2.0
KENTUCKY	1,805,639	513,968	2,319,607	84,211	1,760,000	617,000	2,377,000	63,000	2.5
LOUISIANA	1,969,629	374,597	2,344,226	100,653	1,983,000	384,000	2,377,000	102,000	1.4
MAINE	623,194	116,621	739,815	29,585	614,000	129,000	743,000	29,000	0.4
MARYLAND	2,013,918	329,885	2,343,803	68,354	2,074,000	327,000	2,401,000	70,000	2.4
MASSACHUSETTS	2,448,033	294,132	2,742,165	67,938	2,411,000	269,000	2,680,000	67,000	-2.3
MICHIGAN	4,196,648	532,808	4,729,456	144,199	4,205,000	545,000	4,750,000	144,000	0.4
MINNESOTA	1,943,068	335,969	2,279,037	129,716	1,999,000	343,000	2,342,000	132,000	2.8
MISSISSIPPI	1,196,587	322,838	1,519,425	55,673	1,195,000	313,000	1,508,000	56,000	-0.8
MISSOURI	2,675,651	542,310	3,217,961	75,112	2,662,000	502,000	3,254,000	74,000	1.1
MONTANA	412,126	117,389	529,515	33,710	406,000	116,000	521,000	33,000	-1.6
NEBRASKA	732,712	203,577	936,289	58,327	742,000	195,000	937,000	59,000	0.1
NEVADA	562,761	117,149	699,910	16,610	610,000	117,000	727,000	17,000	3.9
NEW HAMPSHIRE	511,270	58,798	570,068	11,472	509,000	62,000	571,000	11,000	0.2
NEW JERSEY	3,350,239	518,532	3,868,771	96,496	3,434,000	623,000	3,953,000	99,000	2.4
NEW MEXICO	795,647	207,369	1,003,016	23,214	798,000	210,000	1,008,000	23,000	0.5
NEW YORK	5,484,184	704,875	6,189,059	155,867	5,621,000	725,000	6,347,000	160,000	2.6
NORTH CAROLINA	3,238,152	620,894	3,859,046	110,819	3,235,000	629,000	3,864,000	111,000	0.1
NORTH DAKOTA	320,576	92,208	412,784	44,014	313,000	94,000	407,000	43,000	-1.4
OHIO	4,749,657	872,510	5,622,167	209,253	4,754,000	864,000	5,618,000	209,000	-0.1
OKLAHOMA	1,575,523	391,932	1,967,455	72,992	1,558,000	404,000	1,962,000	72,000	-0.3
OREGON	1,318,266	306,271	1,622,537	45,416	1,290,000	322,000	1,612,000	45,000	-0.6
PENNSYLVANIA	4,586,033	940,113	5,526,146	106,827	4,563,000	958,000	5,519,000	106,000	-0.1
RHODE ISLAND	380,221	44,138	424,359	14,052	371,000	51,000	422,000	14,000	-0.6
SOUTH CAROLINA	1,502,816	314,356	1,817,172	84,532	1,458,000	311,000	1,769,000	82,000	-2.7
SOUTH DAKOTA	357,635	95,672	453,307	33,927	354,000	98,000	452,000	34,000	-0.3
TENNESSEE	2,441,695	581,703	3,023,399	74,585	2,566,000	586,000	3,152,000	78,000	4.3
TEXAS	8,479,910	1,346,285	9,826,195	388,468	8,226,000	1,400,000	9,626,000	377,000	-2.0
UTAH	750,792	151,026	901,818	21,304	732,000	143,000	875,000	21,000	-3.0
VERMONT	278,292	46,048	324,340	9,971	282,000	45,000	327,000	10,000	0.8
VIRGINIA	2,933,666	576,017	3,509,683	77,691	3,007,000	597,000	3,604,000	80,000	2.7
WASHINGTON	2,087,184	343,926	2,431,110	66,209	2,194,000	348,000	2,542,000	70,000	4.6
WEST VIRGINIA	808,759	188,075	996,834	28,167	819,000	203,000	1,022,000	29,000	2.5
WISCONSIN	2,012,244	424,294	2,436,538	86,459	1,990,000	433,000	2,423,000	86,000	-0.6
WYOMING	290,585	153,263	443,848	25,663	283,000	151,000	434,000	25,000	-2.2
TOTAL	109,816,325	20,089,555	129,885,880	4,020,209	110,361,000	20,711,000	131,072,000	4,037,000	0.9
BBL/DAY	7,144,000	1,306,000	8,450,000	262,000	7,199,000	1,351,000	8,550,000	263,000	

1/ COMPILED FOR THE CALENDAR YEAR FROM AN ANALYSIS OF MOTOR-FUEL USE. THESE DATA ARE COMPARABLE TO THOSE SHOWN IN TABLES MF-21, 25 AND 28.
2/ THESE ESTIMATES WERE MADE BY THE FEDERAL HIGHWAY ADMINISTRATION ON THE BASIS OF STATE REPORTS OF MOTOR-FUEL CONSUMPTION IN THE EARLY MONTHS OF 1989, AND INFORMATION AVAILABLE ON CURRENT TRENDS, MOTOR-FUEL PRODUCTION AND OTHER FACTORS.

STATE MOTOR-FUEL RECEIPTS

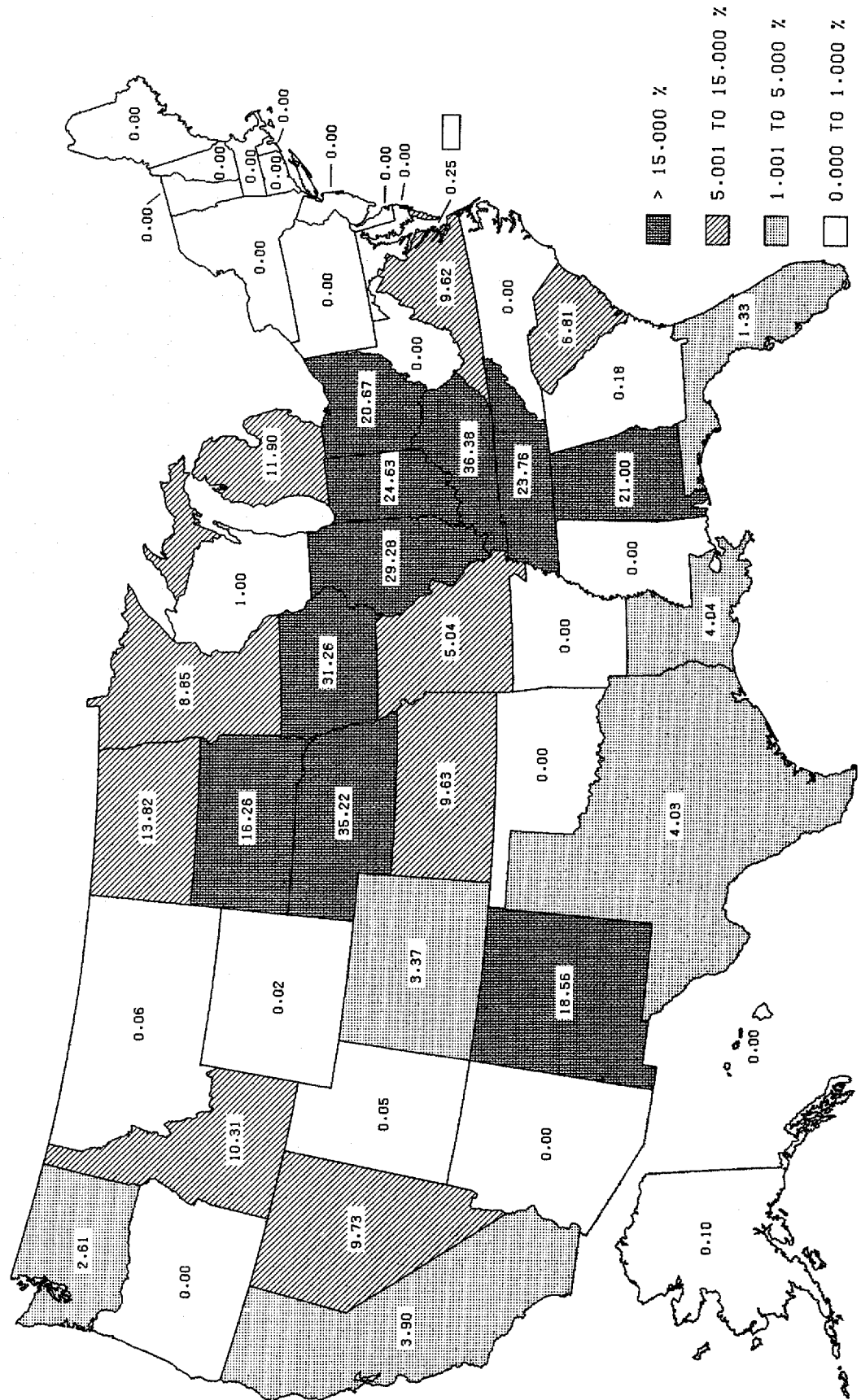
TABLE 5588-2
OCTOBER 1989

(THOUSANDS OF DOLLARS)

STATE	1988				ESTIMATED 1989			PERCENT CHANGE TOTAL RECEIPTS	TAX RATE AS OF OCT. 1, 1989 (CENTS PER GALLON)			
	NET GALLONAGE TAX RECEIPTS	OTHER RECEIPTS	TOTAL	TOTAL RECEIPTS PER HIGWAY GALLON (CENTS)	TAX RATE DEC. 31 (CENTS PER GALLON)		NET GALLONAGE TAX RECEIPTS		OTHER RECEIPTS	TOTAL	1989 1988	GASOLINE
					GASOLINE	DIESEL AND L.P.G.						
ALABAMA	273.375	63.609	336.984	13.67	13	14 & 12	288.895	65.569	354.464	5.2	13	14 & 12
ALASKA	20.986	164	21.150	8.36	8	8 & 0	19.979	204	20.183	-4.6	8	8 & 0
ARIZONA	323.549	3.882	327.431	16.63	17	17	323.014	3.985	326.999	-0.1	17	17
ARKANSAS	203.584	-	203.584	12.72	13.5	12.5 & 11.5	206.573	-	206.573	1.5	13.5	12.5 & 11.5
CALIFORNIA	1,275.415	3.279	1,278.694	8.92	9	9 & 6	1,309.012	3.480	1,312.492	2.6	9	9 & 6
COLORADO	305.102	78	305.180	17.97	18	20.5	305.494	79	305.573	0.1	20	20.5
CONNECTICUT	296.633	4.025	300.658	19.19	20	20	294.551	4.183	298.734	-0.6	20	20
DELAWARE	62.064	23	62.087	15.90	16	16	62.805	27	62.832	1.2	16	16
DIST. OF COL.	28.053	37	28.090	13.80	15.5	15.5	30.361	38	30.399	8.2	18	18
FLORIDA	645.830	9.290	655.120	10.03	9.7	9.7 & 4	650.960	9.379	660.339	0.8	9.7	9.7 & 4
GEORGIA	321.118	3.454	324.572	7.59	7.5	7.5	330.365	3.333	333.698	2.8	7.5	7.5
HAWAII	41.632	18	41.650	11.20	11	11 & 7	43.641	20	43.661	4.8	11	11 & 7
IDAHO	88.053	61	88.114	16.39	18	18	91.237	65	91.302	3.6	18	18
ILLINOIS	720.829	-	720.829	12.90	13	15.5 & 13	772.840	-	772.840	7.2	16	18.5 & 16
INDIANA	535.443	1,129	536.572	16.35	15	16	539.209	1,130	540.339	0.7	15	16
IOWA	290.321	1,457	291.778	17.92	18	20.5 & 18	330.534	1,499	332.033	13.8	20	22.5 & 20
KANSAS	168.069	162	168.231	10.81	11	13 & 10	195.200	167	195.367	16.1	15	17 & 14
KENTUCKY	338.240	774	339.014	14.62	15	12 & 15	346.567	800	347.367	2.5	15	12 & 15
LOUISIANA	374.220	1,116	375.336	16.01	16	16	379.369	1,157	380.526	1.4	16	16
MAINE	111.514	57	111.571	15.08	16	19	116.948	60	117.008	4.9	17	20
MARYLAND	441.989	13,722	455.711	19.44	18.5	18.5	452.829	13,650	466.479	2.4	18.5	18.5
MASSACHUSETTS	307.329	7,058	314.387	11.48	11	11 & 4.5	300.428	7,060	307.488	-2.2	11	11 & 4.5
MICHIGAN	671.559	15,108	686.667	14.52	15	15	674.500	15,122	689.622	0.4	15	15
MINNESOTA	423.888	1,185	424.873	18.64	20	20	435.378	1,246	436.624	2.8	20	20
MISSISSIPPI	246.381	15,855	262.236	17.26	17	17 & 16	259.678	15,955	275.633	5.1	18	18 & 17
MISSOURI	344.478	1,905	346.383	10.76	11	11	348.178	1,419	349.597	0.9	11	11
MONTANA	102.292	321	102.613	19.38	20	20 & 0	100.657	331	100.988	-1.6	20	20 & 0
NEBRASKA	164.125	13	164.138	17.53	18.3	18.3	187.775	13	187.788	14.4	22	22
NEVADA	127.148	376	127.524	18.22	18	20 & 11.72	132.096	426	132.522	3.9	18	20 & 11.72
NEW HAMPSHIRE	79.025	6,749	85.774	15.05	14	14	79.141	6,860	86.001	0.3	14	14
NEW JERSEY	383.967	291	384.258	9.93	10.5	13.5 & 6.25	393.130	317	393.447	2.4	10.5	13.5 & 6.25
NEW MEXICO	133.826	-	133.826	13.32	14	16	141.826	-	141.826	6.1	16	16
NEW YORK	525.277	15	525.292	8.49	8	10 & 8	538.860	15	538.875	2.6	8	10 & 8
NORTH CAROLINA	607.505	16,789	624.294	16.18	15.7	15.7	725.273	17,508	742.781	19.0	20.9	20.9
NORTH DAKOTA	68.268	4,131	72.399	17.64	17	17	68.335	4,206	72.541	0.2	17	17
OHIO	796.873	-	796.873	14.17	14.8	14.8	858.992	-	858.992	7.8	18	18
OKLAHOMA	308.751	641	309.392	15.73	16	13 & 16	307.838	731	308.569	-0.3	16	13 & 16
OREGON	191.312	242	191.554	11.81	14	14	222.295	250	222.545	16.2	16	16
PENNSYLVANIA	997.123	6,669	1,003.792	18.16	12	12	995.628	7,639	1,003.267	-0.1	12	12
RHODE ISLAND	66.644	-	66.644	15.70	15	15	76.804	-	76.804	15.2	20	20
SOUTH CAROLINA	285.115	4,566	289.681	15.94	15	15	295.246	4,676	299.922	3.5	16	16
SOUTH DAKOTA	70.973	1,197	72.170	15.92	18	18 & 16	70.783	1,289	72.072	-0.1	18	18 & 16
TENNESSEE	469.316	36,249	505.565	16.72	17	15 & 13	569.251	37,792	607.043	20.1	21	16 & 14
TEXAS	1,484.164	-	1,484.164	14.90	15	15	1,482.404	-	1,482.404	1.2	15	15
UTAH	158.724	830	159.554	17.69	19	19	154.000	870	154.870	-2.9	19	19
VERMONT	43.524	-	43.524	13.42	13	14 & 0	47.153	-	47.163	8.3	15	16 & 0
VIRGINIA	597.001	320	597.321	17.02	17.5	16	616.644	352	616.996	3.3	17.7	16.2
WASHINGTON	440.800	31	440.831	18.13	18	18 & 0	460.865	35	460.900	4.6	18	18 & 0
WEST VIRGINIA	111.192	-	111.192	11.15	10.5	10.5	147.986	-	147.986	33.1	15.5	15.5
WISCONSIN	509.196	-	509.196	20.90	20.9	20.9	504.711	-	504.711	-0.9	20.8	20.8
WYOMING	35.785	1,587	37.372	8.42	8	8 & 0	36.413	1,570	37.983	1.6	9	9 & 0
TOTAL	17,597.180	228.465	17,825.645	13.72	13.42	13.98	18,322.651	234.507	18,557.158	4.1		
PERCENT CHANGE FROM PRIOR YEAR	8.4	-3.0	8.2	15.0	5.3	4.8	4.1	2.6	4.1	-	-	-

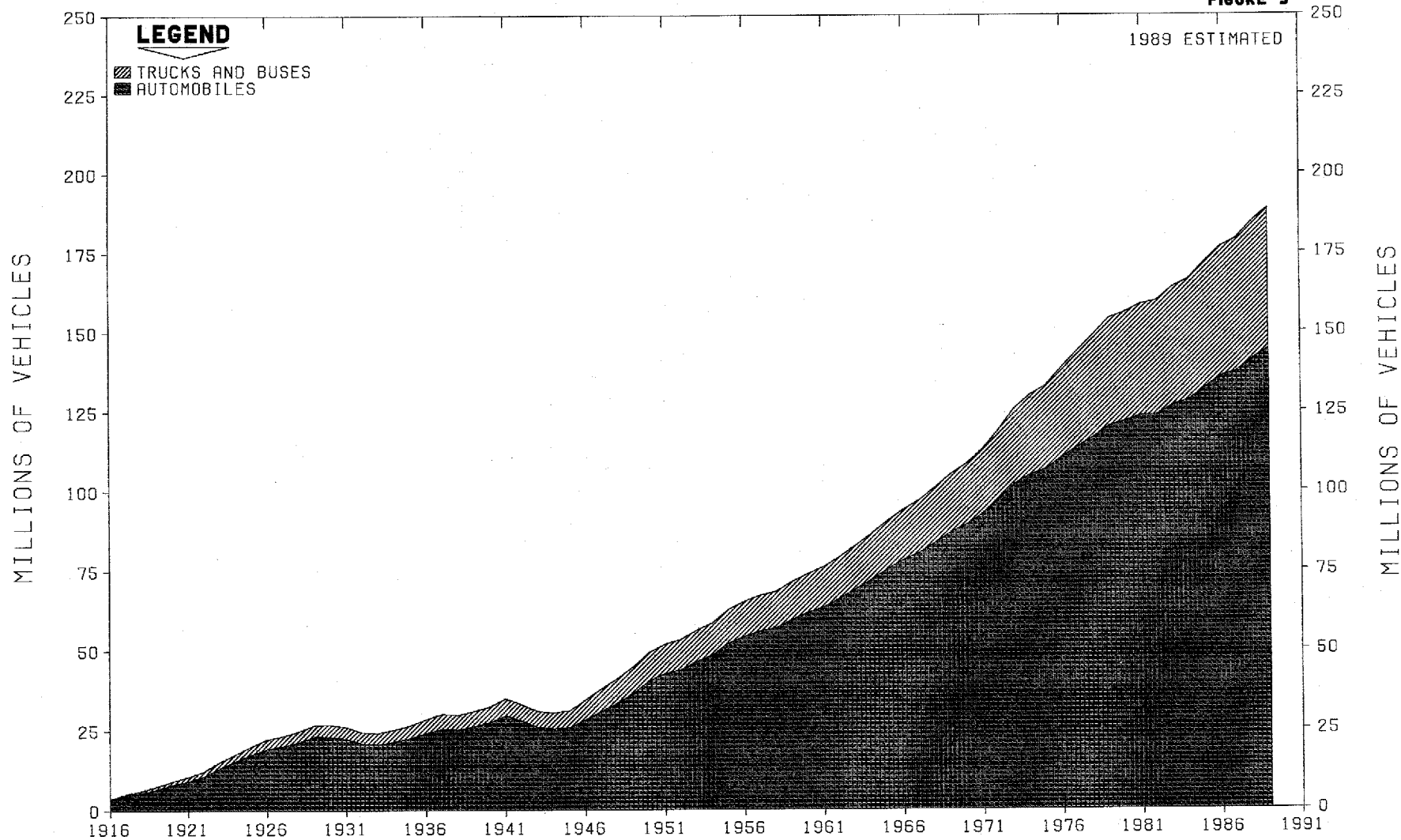
FIGURE 2

GASOLIN AS A PERCENT OF HIGHWAY USE OF GASOLINE - 1988



TOTAL MOTOR-VEHICLE REGISTRATIONS 1916 - 1989

FIGURE 3



MOTOR-VEHICLE REGISTRATIONS¹

TABLE SS88-3
OCTOBER 1989

STATE	AUTOMOBILES			TRUCKS AND BUSES 2/			ALL MOTOR VEHICLES			MOTORCYCLES		STATE
	REGISTERED 1988	ESTIMATED 1989	PERCENT CHANGE 1989 1988	REGISTERED 1988	ESTIMATED 1989	PERCENT CHANGE 1989 1988	REGISTERED 1988	ESTIMATED 1989	PERCENT CHANGE 1989 1988	REGISTERED 1988	ESTIMATED 1989	
ALABAMA	2,919,814	3,065,000	5.0	961,167	1,010,000	5.1	3,880,981	4,075,000	5.0	50,667	46,000	ALABAMA
ALASKA	229,279	233,000	1.6	132,604	134,000	1.1	361,883	367,000	1.4	8,614	8,000	ALASKA
ARIZONA	1,927,503	1,993,000	3.4	777,369	792,000	1.9	2,704,872	2,785,000	3.0	63,750	61,000	ARIZONA
ARKANSAS	844,810	835,000	-1.2	582,240	601,000	3.2	1,427,050	1,436,000	0.5	16,608	14,000	ARKANSAS
CALIFORNIA	16,496,522	16,799,000	1.8	4,840,442	4,858,000	0.4	21,336,964	21,657,000	1.5	664,864	628,000	CALIFORNIA
COLORADO	2,121,998	2,132,000	0.5	801,473	800,000	-0.2	2,923,471	2,932,000	0.3	105,945	102,000	COLORADO
CONNECTICUT	2,490,237	2,535,000	1.8	161,690	160,000	-1.0	2,651,927	2,695,000	1.6	56,440	54,000	CONNECTICUT
DELAWARE	397,286	407,000	2.4	114,654	122,000	6.4	511,940	529,000	3.3	8,643	9,000	DELAWARE
DIST. OF COL.	247,136	252,000	2.0	16,887	16,000	-5.3	264,023	266,000	1.5	2,643	2,000	DIST. OF COL.
FLORIDA	8,713,198	9,014,000	3.5	2,270,456	2,364,000	4.1	10,983,654	11,378,000	3.6	199,460	184,000	FLORIDA
GEORGIA	3,690,981	3,802,000	3.0	1,505,239	1,583,000	5.2	5,196,220	5,385,000	3.6	77,908	75,000	GEORGIA
HAWAII	613,750	626,000	2.0	90,961	93,000	2.2	704,711	719,000	2.0	18,367	17,000	HAWAII
IDAHO	594,228	609,000	2.5	345,950	344,000	-0.6	940,178	953,000	1.4	44,554	43,000	IDAHO
ILLINOIS	6,403,462	6,579,000	2.7	1,461,473	1,512,000	3.5	7,864,935	8,091,000	2.9	243,735	245,000	ILLINOIS
INDIANA	3,069,935	3,115,000	1.5	1,099,311	1,150,000	4.6	4,169,246	4,265,000	2.3	104,532	104,000	INDIANA
IOWA	1,817,383	1,848,000	1.7	750,363	765,000	2.0	2,567,746	2,613,000	1.8	193,700	179,000	IOWA
KANSAS	1,523,226	1,543,000	1.3	686,687	694,000	1.1	2,209,913	2,237,000	1.2	78,474	74,000	KANSAS
KENTUCKY	1,861,754	1,887,000	1.4	933,323	954,000	2.2	2,795,077	2,841,000	1.6	35,366	33,000	KENTUCKY
LOUISIANA	1,970,360	1,986,000	0.8	957,189	998,000	3.2	2,937,549	2,984,000	1.6	38,532	34,000	LOUISIANA
MAINE	709,075	770,000	8.6	232,198	218,000	-6.1	941,273	988,000	5.0	40,930	39,000	MAINE
MARYLAND	2,857,979	2,908,000	1.8	610,268	631,000	3.4	3,468,247	3,539,000	2.0	58,248	60,000	MARYLAND
MASSACHUSETTS	3,322,044	3,292,000	-0.9	496,268	499,000	0.6	3,818,312	3,791,000	-0.7	61,631	58,000	MASSACHUSETTS
MICHIGAN	5,556,109	5,637,000	1.5	1,585,382	1,656,000	4.5	7,141,491	7,293,000	2.1	212,355	200,000	MICHIGAN
MINNESOTA	2,503,362	2,553,000	2.0	706,995	714,000	1.0	3,210,357	3,267,000	1.8	123,271	117,000	MINNESOTA
MISSISSIPPI	1,362,686	1,377,000	1.1	424,173	434,000	2.3	1,786,859	1,811,000	1.4	24,812	25,000	MISSISSIPPI
MISSOURI	2,707,929	2,753,000	1.7	1,086,513	1,120,000	3.1	3,794,442	3,873,000	2.1	65,869	60,000	MISSOURI
MONTANA	430,072	438,000	1.8	292,482	295,000	0.9	722,554	733,000	1.4	26,126	26,000	MONTANA
NEBRASKA	677,894	686,000	0.9	450,338	454,000	0.8	1,328,232	1,340,000	0.9	28,662	27,000	NEBRASKA
NEVADA	574,212	589,000	2.6	234,091	246,000	5.1	808,303	835,000	3.3	18,438	19,000	NEVADA
NEW HAMPSHIRE	733,529	774,000	5.5	194,585	202,000	3.8	928,114	976,000	5.2	37,857	39,000	NEW HAMPSHIRE
NEW JERSEY	5,222,761	5,384,000	3.1	515,091	510,000	-1.0	5,737,852	5,894,000	2.7	89,073	97,000	NEW JERSEY
NEW MEXICO	788,415	773,000	-2.0	478,145	474,000	-0.9	1,266,560	1,247,000	-1.5	37,494	34,000	NEW MEXICO
NEW YORK	8,558,985	8,861,000	3.5	1,278,623	1,323,000	3.5	9,837,608	10,184,000	3.5	218,508	208,000	NEW YORK
NORTH CAROLINA	3,597,092	3,698,000	2.8	1,425,536	1,503,000	5.4	5,022,628	5,201,000	3.6	58,305	56,000	NORTH CAROLINA
NORTH DAKOTA	385,028	388,000	0.8	270,056	274,000	1.5	655,084	662,000	1.1	24,038	23,000	NORTH DAKOTA
OHIO	7,003,826	7,129,000	1.8	1,608,192	1,691,000	5.1	8,612,018	8,820,000	2.4	259,451	244,000	OHIO
OKLAHOMA	1,666,947	1,682,000	0.9	887,071	899,000	1.3	2,554,018	2,581,000	1.1	65,585	62,000	OKLAHOMA
OREGON	1,749,239	1,815,000	3.8	566,452	552,000	-2.6	2,315,691	2,367,000	2.2	73,976	70,000	OREGON
PENNSYLVANIA	6,253,550	6,354,000	1.6	1,512,479	1,568,000	3.7	7,766,029	7,922,000	2.0	187,510	177,000	PENNSYLVANIA
RHODE ISLAND	555,313	566,000	1.9	115,500	121,000	4.8	670,813	687,000	2.4	24,006	23,000	RHODE ISLAND
SOUTH CAROLINA	1,799,425	1,849,000	2.8	614,487	625,000	1.7	2,413,912	2,474,000	2.5	31,653	28,000	SOUTH CAROLINA
SOUTH DAKOTA	413,668	420,000	1.5	278,964	287,000	2.9	692,632	707,000	2.1	31,490	30,000	SOUTH DAKOTA
TENNESSEE	3,373,276	3,509,000	4.0	852,214	873,000	2.4	4,225,490	4,382,000	3.7	59,879	53,000	TENNESSEE
TEXAS	8,455,744	8,523,000	0.8	3,950,469	4,042,000	2.3	12,406,213	12,565,000	1.3	211,668	197,000	TEXAS
UTAH	786,942	807,000	2.5	372,493	381,000	2.3	1,159,435	1,188,000	2.5	30,181	27,000	UTAH
VERMONT	334,428	347,000	3.8	118,418	126,000	6.4	452,846	473,000	4.5	19,227	18,000	VERMONT
VIRGINIA	3,625,109	3,637,000	0.3	1,045,228	1,092,000	4.5	4,670,337	4,729,000	1.3	66,679	61,000	VIRGINIA
WASHINGTON	2,753,299	2,883,000	4.7	1,134,015	1,192,000	5.1	3,887,314	4,075,000	4.8	131,110	130,000	WASHINGTON
WEST VIRGINIA	906,488	932,000	2.8	380,146	389,000	2.3	1,286,634	1,321,000	2.7	19,520	17,000	WEST VIRGINIA
WISCONSIN	3,169,217	3,290,000	3.8	731,889	753,000	2.9	3,901,106	4,043,000	3.6	193,623	197,000	WISCONSIN
WYOMING	285,190	291,000	2.0	196,798	200,000	1.6	481,988	491,000	1.9	20,107	20,000	WYOMING
TOTAL	141,251,695	144,375,000	2.2	43,145,037	44,294,000	2.7	184,396,732	188,669,000	2.3	4,584,284	4,376,000	TOTAL

1/ THESE ESTIMATES WERE MADE BY THE FEDERAL HIGHWAY ADMINISTRATION ON THE BASIS OF STATE REPORTS OF VEHICLE REGISTRATIONS IN THE EARLY MONTHS OF 1989 AND INFORMATION AVAILABLE ON CURRENT TRENDS, VEHICLE PRODUCTION, AND OTHER FACTORS; THEY

INCLUDE BOTH PRIVATELY OWNED AND PUBLICLY OWNED VEHICLES EXCEPT THOSE OWNED BY THE MILITARY SERVICES. REGISTRATIONS SHOWN FOR 1988 ARE FROM TABLE MV-1, 1988.
2/ TRUCKS INCLUDE PICKUPS, PANELS AND DELIVERY VANS.

STATE MOTOR-VEHICLE AND MOTOR-CARRIER REVENUES

(THOUSANDS OF DOLLARS)

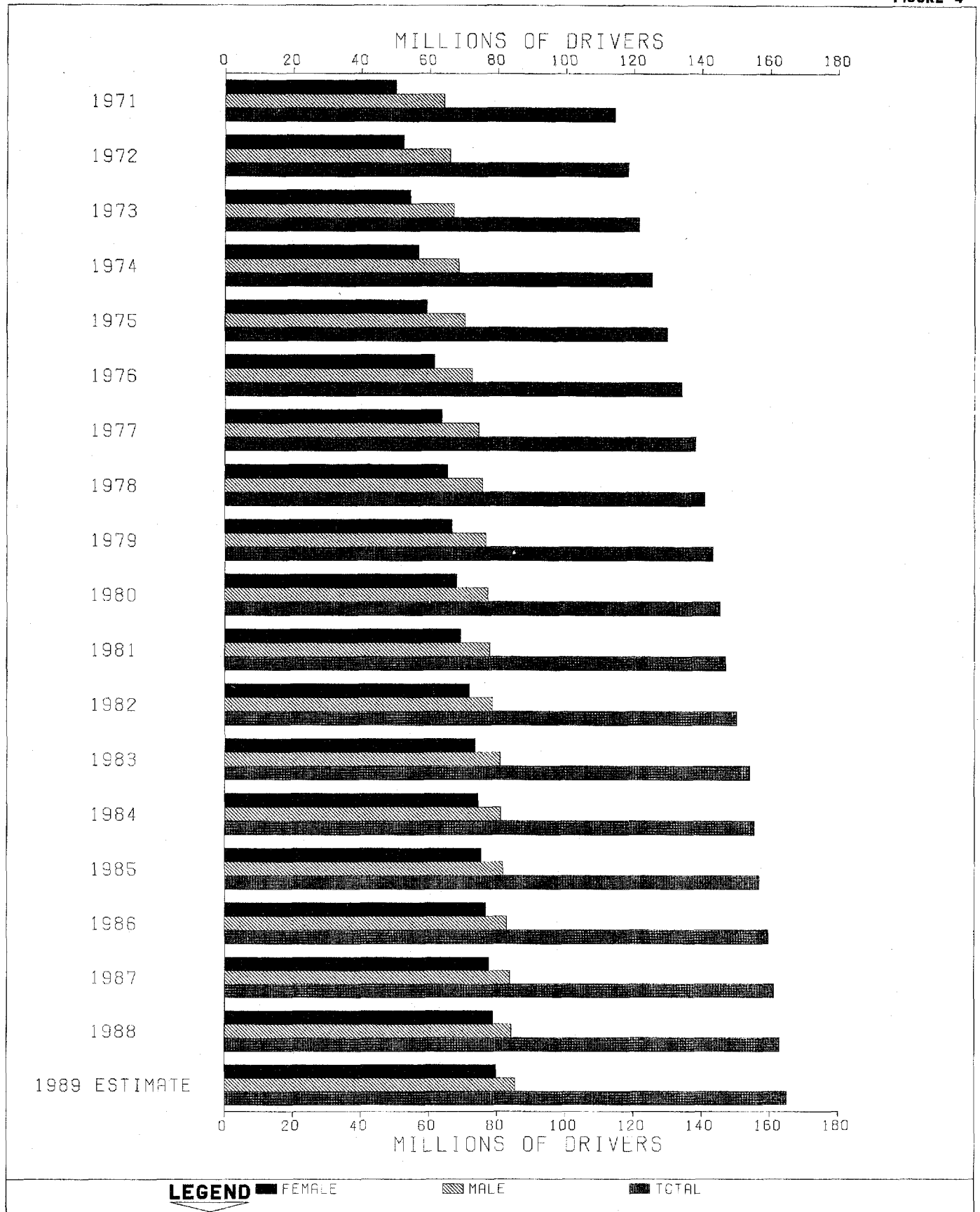
TABLE S888-4
OCTOBER 1989

STATE	1988 1/					1989 (ESTIMATE)					PERCENT CHANGE
	MOTOR-VEHICLE REGISTRATION FEES	OTHER MOTOR-VEHICLE FEES 2/	MOTOR-CARRIER TAXES 3/	MISCELLANEOUS RECEIPTS 4/	TOTAL	MOTOR-VEHICLE REGISTRATION FEES	OTHER MOTOR-VEHICLE FEES 2/	MOTOR-CARRIER TAXES 3/	MISCELLANEOUS RECEIPTS 4/	TOTAL	
	(1)	(2)	(3)	(4)	(5)	(6)	(7)	(8)	(9)	(10)	1989 1988
ALABAMA	117,947	16,531	1,070	6,522	142,070	123,752	28,622	1,079	6,000	159,453	12.2
ALASKA	15,653	2,648	80	1,636	20,017	15,839	2,640	90	1,756	20,306	1.4
ARIZONA	66,866	20,952	103,650	16,439	207,907	68,572	21,680	108,355	16,500	215,107	3.5
ARKANSAS	60,893	9,702	23,590	17,278	111,463	61,625	9,820	22,732	18,000	112,177	0.6
CALIFORNIA	2,839,140	58,179	18,650	195,005	3,110,974	2,871,666	59,337	19,200	205,000	3,155,203	1.4
COLORADO	38,000	17,537	32,632	14,383	102,552	50,161	17,755	32,592	14,100	114,608	11.8
CONNECTICUT	132,082	28,430	56	40,525	201,093	133,673	28,300	60	43,525	205,558	2.2
DELAWARE	15,429	27,921	-	3,469	46,819	16,073	28,792	-	3,865	48,730	4.1
DIST. OF COL.	15,531	32,225	-	1,747	49,503	15,564	31,859	-	1,790	49,213	-0.6
FLORIDA	308,153	98,488	264	71,612	478,517	329,453	99,223	214	78,600	507,490	6.1
GEORGIA	64,176	19,278	2,856	11,261	97,571	66,784	19,443	2,925	11,060	100,212	2.7
HAWAII	39,955	2,199	-	2,963	45,127	40,706	2,222	-	3,065	45,993	1.9
IDAHO	24,394	5,246	20,319	5,039	54,998	24,645	5,357	22,217	4,439	56,658	3.0
ILLINOIS	512,682	35,583	5,493	71,213	624,971	527,981	36,261	5,820	68,200	638,262	2.1
INDIANA	120,073	19,842	1,782	9,648	151,345	124,491	20,410	2,485	10,250	157,636	4.2
IOWA	159,166	15,072	725	5,019	179,982	161,144	15,660	747	5,120	182,671	1.5
KANSAS	70,798	11,885	4,857	7,547	95,087	71,533	11,980	5,104	8,050	96,667	1.7
KENTUCKY	50,572	206,258	37,858	24,129	318,817	51,465	216,608	37,335	26,129	331,537	4.0
LOUISIANA	41,956	22,430	9,137	38,825	112,388	43,008	23,160	9,597	40,825	116,590	3.7
MAINE	43,400	8,204	1,612	12,278	65,494	43,252	8,569	1,619	12,880	66,320	1.3
MARYLAND	128,471	354,549	-	32,712	515,732	131,533	361,935	-	34,710	528,178	2.4
MASSACHUSETTS	87,463	59,202	2,872	24,426	173,963	93,317	61,617	3,172	25,725	183,831	5.7
MICHIGAN	345,998	34,415	9,759	38,090	428,262	354,298	34,458	11,450	36,090	436,296	1.9
MINNESOTA	221,149	21,852	1,715	18,730	263,446	224,780	22,104	1,825	19,130	267,839	1.7
MISSISSIPPI	48,662	14,611	549	20,580	84,402	49,470	15,019	558	21,580	86,628	2.6
MISSOURI	159,782	32,712	3,981	14,097	210,572	163,437	32,725	4,310	14,290	214,762	2.0
MONTANA	20,494	7,416	6,026	3,988	37,922	20,801	7,542	6,243	4,088	38,674	2.0
NEBRASKA	39,133	7,522	985	10,067	57,707	39,432	7,700	1,045	9,950	58,127	0.7
NEVADA	72,318	6,146	19,439	16,149	114,052	75,068	6,415	21,539	16,650	119,672	4.9
NEW HAMPSHIRE	35,168	22,132	2,722	7,272	67,234	38,819	22,982	2,875	7,575	72,251	7.4
NEW JERSEY	240,833	63,790	-	54,284	358,907	245,798	64,878	-	52,295	362,961	1.1
NEW MEXICO	47,579	54,648	41,150	8,005	151,382	46,603	57,718	44,132	8,505	157,158	3.8
NEW YORK	293,571	64,925	60,672	53,720	472,888	394,147	65,978	63,954	55,720	579,799	22.6
NORTH CAROLINA	174,153	35,046	-	55,097	264,296	181,565	35,831	-	58,100	275,496	4.2
NORTH DAKOTA	33,111	6,467	2,341	4,194	46,113	33,424	6,854	2,539	4,495	47,306	2.6
OHIO	329,483	39,091	70,627	19,634	458,835	339,703	40,210	74,642	20,035	474,590	3.4
OKLAHOMA	197,906	25,559	2,502	34,543	260,510	199,506	25,239	2,685	31,500	259,930	-0.2
OREGON	40,992	19,709	132,881	16,811	210,393	41,039	20,924	144,185	17,810	223,958	6.4
PENNSYLVANIA	368,083	114,297	-	67,171	549,551	378,081	114,367	-	69,170	561,618	2.2
RHODE ISLAND	13,943	13,916	2,452	4,251	34,562	14,346	15,007	2,702	4,550	36,605	5.9
SOUTH CAROLINA	47,638	15,230	1,115	27,623	91,606	48,623	15,926	1,169	25,625	91,343	-0.3
SOUTH DAKOTA	29,815	2,111	-	1,739	33,665	30,493	2,232	-	1,640	34,365	2.1
TENNESSEE	136,949	22,703	2,662	7,449	169,763	141,164	23,080	2,875	7,245	174,164	2.6
TEXAS	700,241	1,003,564	3,614	69,130	1,776,549	709,770	1,039,492	3,741	69,230	1,822,233	2.6
UTAH	20,597	4,172	-	13,732	38,501	21,052	4,222	-	14,330	39,604	2.9
VERMONT	23,001	34,704	13	5,389	63,107	25,761	35,203	180	5,890	67,034	6.2
VIRGINIA	150,182	204,486	6,027	54,072	414,767	153,082	205,014	6,207	56,070	420,373	1.4
WASHINGTON	482,814	35,492	7,569	24,887	550,762	505,489	36,785	7,322	26,890	576,486	4.7
WEST VIRGINIA	45,116	95,872	1,670	8,020	150,678	46,208	95,812	1,751	7,020	150,791	0.1
WISCONSIN	146,418	18,507	3,023	27,669	195,617	151,265	19,175	3,203	29,700	203,343	3.9
WYOMING	10,796	1,416	19,952	10,936	42,500	10,981	1,445	20,355	9,640	42,421	-0.2
TOTAL	9,428,775	3,094,874	670,949	1,310,405	14,505,003	9,750,642	3,186,587	706,625	1,344,372	14,988,226	3.3
PERCENT	65.0	21.4	4.6	9.0	100.0	65.0	21.3	4.7	9.0	100.0	

1/ COMPILED FOR CALENDAR YEAR FROM REPORTS OF STATE AUTHORITIES AND OTHER SOURCES.
 2/ INCLUDES OPERATORS AND CHAUFFEURS PERMIT FEES, CERTIFICATE OF TITLE FEES, FINES AND PENALTIES, ESTIMATED SERVICE CHARGES, AND LOCAL COLLECTIONS.
 3/ INCLUDES GROSS RECEIPTS TAXES; MILEAGE, TON-MILE, AND PASSENGER-MILE TAXES; SPECIAL LICENSE FEES AND FRANCHISE TAXES; AND CERTIFICATE OR PERMIT FEES.
 4/ INCLUDES CARAVAN FEES, TRANSFER AND REREGISTRATION FEES, DEALERS LICENSES, FEES FOR OFFICIAL CARS, OVERSIZE AND OVERWEIGHT PERMIT FEES, VEHICLE INSPECTION FEES, DRIVER EXAMINATION FEES, DRIVER LICENSE DUPLICATE AND MISCELLANEOUS FEES, LESS UNCLASSIFIED REFUNDS.

LICENSED DRIVERS, BY SEX

FIGURE 4



DRIVER LICENSES IN FORCE

COMPILED FROM THE CALENDAR YEAR REPORTS
OF STATE AUTHORITIES AND OTHER SOURCES

TABLE 5688-5
OCTOBER 1989

STATE	1988 (DL-1A)					ESTIMATED 1989			PERCENTAGE CHANGE - TOTAL DRIVERS			STATE
	MALE	FEMALE	TOTAL	PERCENT MALE	RATIO OF LICENSED DRIVERS TO PRIVATE AND COMMERCIAL MOTOR VEHICLES REGISTERED	MALE	FEMALE	TOTAL	1989 ---- 1988	1988 ---- 1987	1988 ---- 1978	
						(1.000)	(1.000)	(1.000)				
ALABAMA	1,072,334	1,025,262	2,097,596	51.12	0.55	1,081	1,033	2,114	0.8	0.8	-2.9	ALABAMA
ALASKA	164,852	135,148	300,000	54.95	0.85	166	136	302	0.7	0.0	35.9	ALASKA
ARIZONA	1,206,413	1,145,490	2,351,903	51.30	0.88	1,232	1,169	2,401	2.1	2.1	45.8	ARIZONA
ARKANSAS	863,564	813,299	1,676,863	51.50	1.19	873	822	1,695	1.1	1.2	22.7	ARKANSAS
CALIFORNIA	10,004,485	8,921,488	18,925,973	52.86	0.90	10,204	9,099	19,303	2.0	2.0	26.0	CALIFORNIA
COLORADO	1,189,727	1,036,558	2,226,285	53.44	0.77	1,199	1,045	2,244	0.8	-3.6	11.5	COLORADO
CONNECTICUT	1,211,801	1,158,165	2,369,966	51.13	0.90	1,223	1,168	2,391	0.9	1.0	15.0	CONNECTICUT
DELAWARE	233,515	235,329	468,844	49.81	0.93	237	238	475	1.3	1.4	16.4	DELAWARE
DIST. OF COL.	214,566	177,189	391,755	54.77	1.54	216	178	394	0.6	0.8	12.2	DIST. OF COL.
FLORIDA	4,674,721	4,115,122	8,789,843	53.18	0.82	4,782	4,210	8,992	2.3	2.3	28.0	FLORIDA
GEORGIA	2,202,834	2,132,703	4,335,537	50.81	0.85	2,269	2,197	4,466	3.0	2.9	34.9	GEORGIA
HAWAII	344,326	290,554	634,880	54.23	0.92	348	294	642	1.1	1.1	18.9	HAWAII
IDAHO	366,485	341,076	707,561	51.80	0.77	372	346	718	1.5	2.4	20.4	IDAHO
ILLINOIS	3,703,709	3,558,799	7,262,508	51.00	0.93	3,741	3,594	7,335	1.0	1.1	6.0	ILLINOIS
INDIANA	1,944,153	1,828,855	3,773,008	51.53	0.92	1,955	1,839	3,794	0.6	5.1	6.9	INDIANA
IOWA	914,567	972,383	1,886,950	48.47	0.75	928	987	1,915	1.5	2.4	-6.7	IOWA
KANSAS	848,024	857,845	1,705,869	49.71	0.78	862	871	1,733	1.6	1.6	-4.1	KANSAS
KENTUCKY	1,223,007	1,144,567	2,367,574	51.66	0.87	1,239	1,159	2,398	1.3	1.3	16.2	KENTUCKY
LOUISIANA	1,315,396	1,282,569	2,597,965	50.63	0.90	1,319	1,287	2,606	0.3	-0.6	15.0	LOUISIANA
MAINE	433,662	433,066	866,728	50.03	0.94	440	439	879	1.4	-0.5	26.8	MAINE
MARYLAND	1,602,502	1,534,317	3,136,819	51.09	0.91	1,636	1,567	3,203	2.1	4.2	23.0	MARYLAND
MASSACHUSETTS	2,198,205	2,051,809	4,249,814	51.72	1.13	2,242	2,092	4,334	2.0	7.7	14.0	MASSACHUSETTS
MICHIGAN	3,209,975	3,178,543	6,388,518	50.25	0.91	3,216	3,185	6,401	0.2	0.2	2.2	MICHIGAN
MINNESOTA	1,274,764	1,204,161	2,478,925	51.42	0.78	1,280	1,209	2,489	0.4	0.3	10.9	MINNESOTA
MISSISSIPPI	925,597	887,962	1,813,559	51.04	1.03	942	903	1,845	1.7	2.1	14.2	MISSISSIPPI
MISSOURI	1,776,678	1,734,998	3,511,676	50.59	0.93	1,796	1,754	3,550	1.1	1.2	11.0	MISSOURI
MONTANA	292,988	241,469	534,457	54.82	0.76	294	242	536	0.3	11.5	-7.9	MONTANA
NEBRASKA	550,328	537,776	1,088,104	50.58	0.83	558	546	1,104	1.5	1.8	2.6	NEBRASKA
NEVADA	391,404	357,633	749,037	52.25	0.95	400	366	766	2.3	4.2	42.1	NEVADA
NEW HAMPSHIRE	405,204	393,132	798,336	50.76	0.87	412	399	811	1.6	1.6	30.1	NEW HAMPSHIRE
NEW JERSEY	2,868,885	2,582,671	5,451,556	52.63	0.97	2,906	2,616	5,522	1.3	-9.5	21.2	NEW JERSEY
NEW MEXICO	544,576	502,685	1,047,261	52.00	0.85	550	508	1,058	1.0	0.9	30.4	NEW MEXICO
NEW YORK	5,433,591	4,709,873	10,143,464	53.57	1.04	5,493	4,762	10,255	1.1	1.1	11.1	NEW YORK
NORTH CAROLINA	2,231,228	2,190,706	4,421,934	50.46	0.90	2,276	2,234	4,510	2.0	2.4	22.9	NORTH CAROLINA
NORTH DAKOTA	220,072	211,294	431,366	51.02	0.67	220	212	432	0.1	-0.6	7.0	NORTH DAKOTA
OHIO	3,760,864	3,617,873	7,378,737	50.97	0.87	3,768	3,625	7,393	0.2	-0.3	-9.8	OHIO
OKLAHOMA	1,110,244	1,109,052	2,219,296	50.03	0.89	1,128	1,126	2,254	1.6	2.6	18.4	OKLAHOMA
OREGON	1,137,303	1,032,821	2,170,124	52.41	0.96	1,151	1,045	2,196	1.2	7.0	18.8	OREGON
PENNSYLVANIA	4,029,223	3,702,657	7,731,880	52.11	1.01	4,054	3,725	7,779	0.6	0.6	9.4	PENNSYLVANIA
RHODE ISLAND	336,501	329,747	666,248	50.51	1.01	345	339	684	2.7	2.8	14.8	RHODE ISLAND
SOUTH CAROLINA	1,161,402	1,144,131	2,305,533	50.37	0.97	1,183	1,166	2,349	1.9	5.0	27.1	SOUTH CAROLINA
SOUTH DAKOTA	244,445	238,130	482,575	50.65	0.71	245	238	483	0.1	-0.6	2.7	SOUTH DAKOTA
TENNESSEE	1,587,611	1,611,367	3,198,978	49.63	0.77	1,608	1,633	3,241	1.3	1.3	18.7	TENNESSEE
TEXAS	5,739,889	5,340,813	11,080,702	51.80	0.92	5,757	5,357	11,114	0.3	-0.7	29.3	TEXAS
UTAH	490,277	487,359	977,636	50.15	0.86	496	494	990	1.3	-2.8	26.5	UTAH
VERMONT	210,614	195,580	406,194	51.85	0.91	213	198	411	1.2	1.0	23.8	VERMONT
VIRGINIA	2,089,470	2,040,040	4,129,510	50.60	0.90	2,127	2,077	4,204	1.8	1.9	26.7	VIRGINIA
WASHINGTON	1,637,237	1,660,786	3,198,023	51.20	0.83	1,660	1,583	3,243	1.4	1.3	28.7	WASHINGTON
WEST VIRGINIA	691,604	616,608	1,308,212	52.87	1.06	694	619	1,313	0.4	0.4	-8.1	WEST VIRGINIA
WISCONSIN	1,680,715	1,587,492	3,268,207	51.43	0.85	1,691	1,597	3,288	0.6	0.6	12.7	WISCONSIN
WYOMING	183,872	165,074	348,946	52.69	0.74	188	169	357	2.3	2.9	9.4	WYOMING
TOTAL	84,149,429	78,703,826	162,853,255	51.67	0.90	85,215	79,697	164,912	1.3	1.1	15.6	TOTAL
PERCENT CHANGE FROM PRIOR YEAR	0.6	1.53	1.07	-	-	-	-	-	-	-	-	PERCENT CHANGE FROM PRIOR YEAR

STATUS OF THE FEDERAL HIGHWAY TRUST FUND¹

FISCAL YEAR ENDED SEPTEMBER 30, 1988

TABLE S588-7
OCTOBER 1989

ITEMS	HIGHWAYS	MASS TRANSIT ACCOUNT 2/	TOTAL
I. OPENING BALANCE:	\$9,411,568,984.62	\$4,202,056,029.61	\$13,619,615,014.23
II. RECEIPTS:			
A. EXCISE TAXES (TRANSFERRED GENERAL FUND RECEIPTS)			
1. GASOLINE (INCLUDES FLOOR STOCKS)	8,300,712,830.00	1,016,860,000.00	9,317,572,830.00
2. GASOLINE	155,997,000.00	77,999,000.00	233,996,000.00
3. DIESEL AND SPECIAL MOTOR FUELS	2,585,699,880.00	182,571,000.00	2,768,270,880.00
4. TIRES	334,074,174.00	-	334,074,174.00
5. TRUCKS AND TRAILERS	1,277,156,455.00	-	1,277,156,455.00
6. FEDERAL USE TAX	581,292,710.00	-	581,292,710.00
7. REPEALED TAXES 3/	(3,254,393.00)	-	(3,254,393.00)
8. FINES AND PENALTIES	3,461,264.04	-	3,461,264.04
9. TOTAL EXCISE TAXES	13,235,139,920.04	1,277,430,000.00	14,512,569,920.04
B. DEDUCT - REIMBURSEMENT TO GENERAL FUND RECEIPTS (REFUNDS AND TAX CREDITS)			
1. GASOLINE USED ON FARMS	150,152,720.00	-	150,152,720.00
2. GASOLINE USED FOR ALL OTHER NONHIGHWAY PURPOSES OR LOCAL TRANSIT SYSTEMS	(20,501,560.00)	-	(20,501,560.00)
3. TAXICAB FUEL REFUNDS	3,081,480.00	-	3,081,480.00
4. FUEL USED IN COMMERCIAL FISHING VESSELS	14,678,690.00	-	14,678,690.00
5. GASOLINE (TAX PAID GASOLINE)	14,163,780.00	-	14,163,780.00
6. AVIATION FUELS USED ON FARMS	1,922,310.00	-	1,922,310.00
7. GASOLINE, OTHER	114,283,350.00	-	114,283,350.00
8. DIESEL FUELS	13,739,500.00	-	13,739,500.00
9. GASOLINE, DIESEL AND ALCOHOL MIXTURES	741,540.00	-	741,540.00
10. TOTAL	292,261,810.00	-	292,261,810.00
C. TRANSFERS			
1. TO LAND AND WATER CONSERVATION FUND	1,000,000.00	-	1,000,000.00
2. TO AQUATIC RESOURCES TRUST FUND	105,451,000.00	-	105,451,000.00
3. TOTAL	106,451,000.00	-	106,451,000.00
D. NET EXCISE TAXES	12,836,427,110.04	1,277,430,000.00	14,113,857,110.04
E. INTEREST	808,983,509.51	383,749,554.70	1,192,733,064.21
F. TOTAL RECEIPTS	13,645,410,619.55	1,661,179,554.70	15,306,590,174.25
III. EXPENDITURES: (CHECKS ISSUED BASIS)			
A. FEDERAL HIGHWAY ADMINISTRATION			
1. HIGHWAYS (FEDERAL-AID)	13,829,076,817.06	-	13,829,076,817.06
2. RIGHT-OF-WAY REVOLVING FUND	(2,946,653.15)	-	(2,946,653.15)
3. HIGHWAY RELATED SAFETY GRANTS	61,676,812.81	-	61,676,812.81
4. HIGHWAY SAFETY RESEARCH AND DEVELOPMENT	7,255,021.19	-	7,255,021.19
5. TRUST FUND SHARE OTHER HIGHWAY PROGRAMS	8,253,176.59	-	8,253,176.59
6. OTHER	19,010,646.34	-	19,010,646.34
7. TOTAL	13,922,325,820.84	-	13,922,325,820.84
B. URBAN MASS TRANSPORTATION ADMINISTRATION	-	695,675,179.27	695,675,179.27
C. NATIONAL HIGHWAY TRAFFIC SAFETY ADMINISTRATION	115,536,126.71	-	115,536,126.71
D. TOTAL EXPENDITURES	14,037,861,947.55	695,675,179.27	14,733,537,126.82
IV. BALANCES IN TRUST FUND			
A. INVESTMENTS			
U. S. TREASURY SPECIAL CERTIFICATES OF INDEBTEDNESS 4/	8,284,295,000.00	5,163,657,000.00	13,447,952,000.00
B. UNDISBURSED BALANCES			
1. HIGHWAY TRUST FUND	520.61	751.51	1,272.12
2. HIGHWAYS (FEDERAL-AID)	649,059,807.53	-	649,059,807.53
3. RIGHT-OF-WAY REVOLVING FUND	24,759,880.92	-	24,759,880.92
4. HIGHWAY RELATED SAFETY GRANTS	11,326,962.91	-	11,326,962.91
5. HIGHWAY SAFETY RESEARCH AND DEVELOPMENT	3,800,019.68	-	3,800,019.68
6. TRUST FUND SHARE OTHER HIGHWAY PROGRAMS	3,721,121.47	-	3,721,121.47
7. MASS TRANSIT ACCOUNT	-	3,902,653.53	3,902,653.53
8. NATIONAL HIGHWAY TRAFFIC SAFETY ADMINISTRATION	33,821,056.96	-	33,821,056.96
9. OTHER	8,323,306.54	-	8,323,306.54
10. TOTAL	734,812,656.62	3,903,405.04	738,716,061.66
C. TOTAL BALANCE	\$9,019,107,656.62	\$5,167,560,405.04	\$14,186,668,061.66

1/ THE FUND WAS CREATED JUNE 29, 1956 WITH ENACTMENT OF THE HIGHWAY REVENUE ACT OF 1956.
2/ THE MASS TRANSIT ACCOUNT WAS ESTABLISHED APRIL 1, 1983 WITH ENACTMENT OF THE SURFACE TRANSPORTATION ASSISTANCE ACT OF 1982.
3/ INCLUDES PARTS AND ACCESSORIES, INNER TUBES, TREAD RUBBER, AND LUBRICATING OIL.
4/ CERTIFICATES HELD SEPTEMBER 30, 1988 FOR \$13,447,952,000.00 BORE INTEREST AT 8.625 PERCENT.

FISCAL YEARS 1957 - 1988

TABLE 5688-8
OCTOBER 1989

(THOUSANDS OF DOLLARS)

STATE	PAYMENTS INTO THE FUND 2/				APPORTIONMENTS FROM THE FUND 3/				RATIO-PERCENT APPORTIONMENTS/PERCENT PAYMENTS		RATIO - APPORTIONMENTS/PAYMENTS	
	FISCAL YEAR 1988	PERCENT OF TOTAL	CUMULATED SINCE 7-1-56	PERCENT OF TOTAL	FISCAL YEAR 1988	PERCENT OF TOTAL	CUMULATED SINCE 7-1-56	PERCENT OF TOTAL	FISCAL YEAR 1988	CUMULATED SINCE 7-1-56	FISCAL YEAR 1988	CUMULATED SINCE 7-1-56
(1)	(2)	(3)	(4)	(5)	(6)	(7)	(8)	(9)	(10)	(11)	(12)	
ALABAMA	232,864	1.814	3,522,528	1.849	414,183	2.762	4,613,144	2.086	1.52	1.13	1.78	1.31
ALASKA	22,295	0.174	342,902	0.180	172,143	1.148	2,746,974	1.242	6.60	7.72	8.01	
ARIZONA	196,305	1.529	2,380,553	1.249	218,487	1.457	3,548,284	1.604	0.95	1.28	1.11	1.48
ARKANSAS	172,995	1.348	2,362,454	1.240	142,581	0.951	2,370,719	1.072	0.71	0.86	0.82	1.00
CALIFORNIA	1,374,187	10.705	19,229,098	10.091	1,376,210	9.178	17,444,305	7.887	0.86	0.78	1.00	0.91
COLORADO	163,983	1.277	2,476,740	1.299	208,926	1.393	3,402,945	1.539	1.09	1.18	1.27	1.37
CONNECTICUT	159,036	1.239	2,326,218	1.227	463,559	3.092	3,641,135	1.737	2.50	1.42	2.91	1.65
DELAWARE	40,383	0.314	567,852	0.298	51,760	0.345	680,923	0.398	1.10	1.34	1.28	1.55
DIST. OF COL.	19,354	0.151	390,216	0.205	89,874	0.600	1,524,271	0.689	3.97	3.36	4.64	3.91
FLORIDA	623,441	4.857	7,717,314	4.050	467,303	3.117	7,217,171	3.263	0.64	0.81	0.75	0.94
GEORGIA	456,421	3.556	5,490,526	2.881	353,155	2.355	5,642,506	2.551	0.56	0.89	0.77	1.03
HAWAII	32,092	0.250	479,522	0.252	145,774	0.972	1,448,344	0.655	3.89	2.60	4.64	3.02
IDAHO	58,222	0.454	901,380	0.473	165,724	1.105	1,671,350	0.758	2.43	1.60	2.85	1.85
ILLINOIS	457,284	3.640	8,469,721	4.445	504,861	3.367	9,712,853	4.392	0.92	0.99	1.06	1.15
INDIANA	319,359	2.488	5,249,648	2.755	232,317	1.656	4,597,087	2.178	0.77	0.78	0.82	0.88
IOWA	155,178	1.209	2,789,007	1.454	214,016	1.427	3,250,157	1.470	1.18	1.00	1.38	1.17
KANSAS	163,793	1.276	2,498,752	1.311	148,364	0.990	2,908,793	1.315	0.78	1.00	0.91	1.16
KENTUCKY	183,436	1.429	3,080,010	1.622	172,187	1.148	3,852,740	1.742	0.80	1.07	0.94	1.25
LOUISIANA	225,823	1.758	3,574,523	1.876	275,578	1.838	5,199,735	2.351	1.05	1.25	1.22	1.45
MAINE	81,543	0.635	1,032,133	0.542	74,107	0.494	1,165,574	0.527	0.78	0.97	0.91	1.13
MARYLAND	236,645	1.843	3,285,979	1.724	418,552	2.792	5,324,322	2.407	1.51	1.40	1.77	1.62
MASSACHUSETTS	259,550	2.022	4,012,264	2.106	581,987	3.748	4,411,553	1.995	1.86	0.95	2.17	1.10
MICHIGAN	423,069	3.296	7,443,648	3.906	380,719	2.539	6,778,548	3.054	0.77	0.78	0.90	0.91
MINNESOTA	214,064	1.688	3,570,365	1.874	311,732	2.079	4,905,515	2.173	1.25	1.16	1.46	1.35
MISSISSIPPI	189,250	1.318	2,343,373	1.230	152,803	1.019	2,502,359	1.131	0.77	0.92	0.90	1.07
MISSOURI	329,341	2.576	4,308,436	2.307	4,308,436	1.753	4,380,685	2.262	0.68	0.87	0.80	1.01
MONTANA	58,960	0.459	936,985	0.492	113,239	0.765	2,466,529	1.115	1.64	2.27	1.92	2.63
NEBRASKA	91,949	0.716	1,635,008	0.858	128,918	0.860	1,922,763	0.869	1.20	1.01	1.40	1.18
NEVADA	88,987	0.637	813,630	0.427	54,579	0.631	1,630,681	0.737	1.18	1.73	1.37	2.00
NEW HAMPSHIRE	52,962	0.413	719,718	0.378	75,473	0.503	1,124,754	0.509	1.22	1.35	1.43	1.56
NEW JERSEY	404,616	3.151	5,791,617	3.039	523,750	3.493	5,398,969	2.441	1.11	0.80	1.29	0.93
NEW MEXICO	103,302	0.805	1,457,391	0.765	113,455	0.757	2,181,814	0.987	0.94	1.29	1.10	1.60
NEW YORK	627,776	4.891	9,942,258	5.218	787,130	5.050	11,928,118	5.399	1.03	1.03	1.21	1.20
NORTH CAROLINA	395,886	3.064	5,349,363	2.807	509,191	3.492	4,475,725	2.052	0.67	0.72	0.78	0.84
NORTH DAKOTA	44,785	0.349	721,510	0.379	79,889	0.532	1,420,593	0.642	1.52	1.69	1.78	1.97
OHIO	531,418	4.140	9,040,860	4.744	460,873	3.074	8,343,541	3.773	0.74	0.80	0.87	0.92
OKLAHOMA	220,911	1.721	3,344,368	1.755	212,817	1.419	2,831,239	1.280	0.82	0.79	0.96	0.85
OREGON	167,349	1.304	2,463,958	1.293	152,191	1.015	3,298,734	1.492	0.78	1.15	0.91	1.34
PENNSYLVANIA	570,009	4.440	8,948,613	4.695	628,588	5.526	10,403,207	4.704	1.24	1.00	1.45	1.16
RHODE ISLAND	43,765	0.341	651,674	0.342	106,965	0.713	1,350,103	0.611	2.09	2.44	2.44	2.07
SOUTH CAROLINA	194,184	1.513	2,783,482	1.450	211,049	1.408	2,620,918	1.185	0.93	0.82	1.09	0.95
SOUTH DAKOTA	47,182	0.368	775,773	0.407	89,349	0.595	1,541,132	0.697	1.52	1.71	1.89	1.89
TENNESSEE	318,880	2.488	4,295,722	2.254	255,813	1.708	4,692,366	2.122	0.69	0.84	0.81	1.09
TEXAS	855,541	7.678	14,671,820	7.700	809,848	6.069	12,482,287	5.935	0.79	0.73	0.92	0.85
UTAH	93,388	0.727	1,258,245	0.660	201,671	1.345	2,647,287	1.197	1.85	1.81	2.15	2.10
VERMONT	32,241	0.251	445,920	0.234	54,779	0.365	1,110,881	0.502	1.45	2.15	1.70	2.49
VIRGINIA	345,128	2.689	4,595,910	2.412	393,550	2.625	6,213,773	2.810	0.98	1.17	1.14	1.35
WASHINGTON	241,335	1.880	3,353,028	1.750	371,482	2.477	5,687,889	2.678	1.32	1.45	1.54	1.70
WEST VIRGINIA	100,222	0.781	1,556,613	0.817	127,893	0.853	3,771,789	1.705	1.09	2.09	1.28	2.42
WISCONSIN	248,973	1.940	3,832,973	2.011	375,046	1.354	3,275,825	1.482	0.70	0.74	0.82	0.85
WYOMING	65,504	0.534	729,649	0.393	95,235	0.642	1,633,013	0.738	1.20	1.53	1.40	2.24
TOTAL	12,836,427	100.000	190,551,075	100.000	14,912,415	99.455	220,284,926	99.603	-	-	1.18	1.18
AMERICAN SAMOA	-	-	-	-	1,811	0.012	9,773	0.004	-	-	-	-
GUAM	-	-	-	-	5,680	0.038	28,582	0.013	-	-	-	-
N. MARIANAS	-	-	-	-	1,677	0.011	9,218	0.004	-	-	-	-
PUERTO RICO	-	-	-	-	66,895	0.445	797,694	0.361	-	-	-	-
VIRGIN ISLANDS	-	-	-	-	5,677	0.038	33,589	0.015	-	-	-	-
GRAND TOTAL	12,836,427	100.000	190,551,075	100.000	14,994,155	100.000	221,163,982	100.000	-	-	1.17	1.18

15

1/ EXCLUDES THE 1 CENT PER GALLON TAX ON MOTOR FUEL TRANSFERRED TO THE MASS TRANSIT ACCOUNT AND THE 0.1 CENT PER GALLON TAX ON MOTOR FUEL DEDICATED TO THE LEAKING UNDERGROUND STORAGE TANK TRUST FUND. INCLUDES FISCAL YEAR 1989 INTERSTATE CONSTRUCTION AND INTERSTATE 4R FUNDS APPORTIONED DURING FISCAL YEAR 1989.
2/ TOTAL FEDERAL HIGHWAY TRUST FUND RECEIPTS ARE REPORTED BY THE U.S. DEPARTMENT OF THE TREASURY. PAYMENTS INTO THE HIGHWAY TRUST FUND ATTRIBUTABLE TO HIGHWAY USERS IN EACH STATE ARE ESTIMATED BY THE FEDERAL HIGHWAY ADMINISTRATION. INCLUDES REVENUES FROM HIGHWAY-USER TAXES ONLY. EXCLUDES INTEREST.

3/ INCLUDES ALL FUNDS APPORTIONED OR ALLOCATED FROM THE HIGHWAY TRUST FUND EXCEPT FOR THE FOLLOWING PROGRAMS: INDIAN RESERVATION ROADS, HIGHWAY SAFETY INFORMATION, AND RURAL TRANSPORTATION ASSISTANCE. THESE PROGRAMS ARE EITHER ADMINISTERED BY OTHER FEDERAL AGENCIES OR ARE TREATED AS ADMINISTRATIVE FUNDS AND CANNOT BE EASILY ATTRIBUTED TO INDIVIDUAL STATES. OBLIGATIONS ARE USED TO REPRESENT ALLOCATIONS FOR THE FOLLOWING PROGRAMS: FEDERAL LANDS, EMERGENCY RELIEF, RURAL HIGHWAY PUBLIC TRANSPORTATION DEMONSTRATION, PARKWAYS AND PARK ROADS, ALCOHOL SAFETY INCENTIVE GRANTS AND THE WOODROW WILSON BRIDGE.

APPORTIONMENT OF FEDERAL-AID HIGHWAY FUNDS¹

FOR FISCAL YEAR 1990

(DOES NOT REFLECT ANY SEQUESTRATION OF FUNDS UNDER THE GRAMM-RUDMAN-HOLLINGS ACTS)

(THOUSANDS OF DOLLARS)

TABLE 5588-9-PART 1
OCTOBER 1989

STATE	FEDERAL-AID HIGHWAY SYSTEM FUNDS						OTHER FEDERAL-AID HIGHWAY FUNDS							TOTAL 4/
	CONSOLIDATED PRIMARY	RURAL SECONDARY	URBAN SYSTEM	INTERSTATE	INTERSTATE 4R 2/	TOTAL	INTERSTATE HIGHWAY SUBSTITUTE	EIGHTY-FIVE PERCENT MINIMUM ALLOCATION FUNDS	HAZARD ELIMINATION FUNDS	ELIMINATION OF HAZARDS AT RAIL-HIGHWAY CROSSINGS	BRIDGE REPLACEMENT AND REHABILITATION FUNDS	HIGHWAY SAFETY PROGRAMS 3/	METRO- POLITAN PLANNING	
ALABAMA	41,245	12,078	9,465	108,637	48,127	219,552	-	-	3,006	3,247	29,612	2,269	567	258,253
ALASKA	74,821	32,254	3,657	13,858	21,153	145,753	-	-	833	2,450	3,431	633	237	153,337
ARIZONA	31,171	9,746	9,446	13,858	55,799	120,020	-	41,145	2,175	1,578	3,431	1,640	614	170,601
ARKANSAS	28,970	10,825	4,464	13,858	26,925	65,042	-	33,719	2,016	2,451	1,520	1,520	237	142,139
CALIFORNIA	167,424	24,402	92,603	310,588	245,346	840,343	8,746	198,048	14,226	10,246	44,522	10,760	6,346	1,133,237
COLORADO	36,224	11,808	9,801	58,611	48,872	165,316	11	2,340	2,340	13,900	1,766	1,766	647	186,261
CONNECTICUT	29,291	3,915	10,494	39,611	32,724	112,035	80,677	-	1,852	1,040	60,928	1,401	743	258,676
DELAWARE	11,335	2,925	3,657	13,858	12,724	44,499	-	-	833	501	4,033	633	237	50,736
DIST. OF COL.	11,335	-	3,657	56,148	12,724	83,864	14,250	-	833	212	10,854	633	237	110,883
FLORIDA	76,142	15,156	34,887	162,492	90,693	379,380	-	15,909	5,284	4,700	22,708	4,735	2,384	435,080
GEORGIA	55,674	15,858	13,914	65,806	90,016	241,248	9,872	109,939	4,014	4,715	27,979	3,030	836	401,633
HAWAII	11,335	2,925	3,657	106,246	12,724	138,887	-	-	833	394	4,520	633	237	145,504
IDAHO	18,215	7,178	3,657	20,805	23,003	72,858	-	-	1,133	1,426	3,431	853	237	79,938
ILLINOIS	89,924	16,623	40,130	13,858	90,955	251,490	41,869	-	7,464	7,956	40,119	5,641	2,662	357,201
INDIANA	52,638	13,752	14,534	13,858	56,610	151,402	4,096	75,528	3,863	5,042	23,268	2,917	835	266,951
IOWA	34,430	12,314	6,652	13,858	36,470	103,724	18,688	-	2,718	3,815	24,970	2,048	299	156,262
KANSAS	32,361	11,598	6,218	13,858	37,027	101,052	-	3,658	2,641	4,874	26,211	1,988	274	140,688
KENTUCKY	39,575	12,128	7,437	20,781	44,385	124,306	-	-	2,667	2,587	27,428	2,014	366	159,398
LOUISIANA	38,885	9,801	11,859	119,978	44,394	224,917	-	-	2,836	3,195	31,607	2,143	707	265,405
MAINE	14,458	5,080	3,657	13,858	12,724	49,777	-	-	833	943	8,549	633	237	60,972
MARYLAND	34,026	5,799	14,387	108,466	38,981	201,659	39,166	-	2,527	1,491	17,680	1,911	1,008	265,452
MASSACHUSETTS	44,668	5,975	20,391	170,085	32,229	273,348	7,359	-	3,300	2,009	70,894	2,564	1,427	360,891
MICHIGAN	82,732	17,388	27,574	41,172	84,148	253,014	-	11,994	6,134	5,371	31,345	4,635	1,856	314,349
MINNESOTA	45,525	14,313	11,058	39,196	47,673	156,765	5	-	3,512	4,066	17,107	2,649	659	183,763
MISSISSIPPI	31,796	10,705	4,663	13,858	31,680	92,702	-	-	2,086	2,078	20,989	1,675	237	147,231
MISSOURI	51,720	15,598	13,687	13,858	71,850	166,513	-	-	40,868	55,494	2,909	641	274	274,468
MONTANA	26,354	10,857	3,657	13,858	41,372	96,098	-	-	1,163	1,622	7,142	875	237	107,137
NEBRASKA	24,771	4,025	13,858	13,858	21,525	73,350	-	-	1,797	2,673	16,563	1,353	237	95,973
NEVADA	18,852	7,071	3,657	13,858	22,495	65,933	-	-	892	793	3,431	872	237	71,958
NEW HAMPSHIRE	11,335	2,925	3,657	13,858	12,724	44,499	-	-	833	619	7,412	633	237	54,227
NEW JERSEY	53,543	5,353	28,088	77,514	32,123	196,621	32,726	-	4,256	2,667	60,544	3,220	2,019	302,073
NEW MEXICO	25,681	9,641	3,846	13,858	42,358	95,384	-	-	1,263	1,204	4,532	945	237	103,555
NEW YORK	134,956	17,637	63,285	13,858	88,858	318,604	184,203	-	10,449	6,035	137,240	7,945	4,427	688,882
NORTH CAROLINA	49,416	9,866	7,272	18,220	45,708	135,768	-	16,646	4,093	3,991	28,217	3,092	649	243,450
NORTH DAKOTA	17,241	6,968	3,657	13,858	20,302	62,046	-	-	1,247	2,799	5,051	937	237	72,317
OHIO	93,960	10,334	33,398	31,684	101,951	279,327	7,914	110,010	6,899	6,756	42,984	5,215	2,099	461,184
OKLAHOMA	34,056	11,542	8,137	13,858	35,658	103,251	-	51,221	2,785	3,292	31,801	2,085	407	194,822
OREGON	29,407	9,866	7,272	18,220	45,708	135,768	-	-	833	833	7,412	633	237	126,024
PENNSYLVANIA	107,562	22,176	34,316	130,174	65,859	360,239	1,947	-	7,499	5,821	121,204	5,665	2,301	504,730
RHODE ISLAND	11,335	2,925	3,657	13,858	12,724	44,499	62,347	-	833	447	3,431	633	254	112,444
SOUTH CAROLINA	33,004	9,306	6,717	20,757	41,389	111,173	-	40,841	2,318	2,617	11,556	1,750	382	170,637
SOUTH DAKOTA	18,500	7,593	3,657	13,858	25,162	68,770	-	-	1,133	1,651	5,787	862	237	79,430
TENNESSEE	47,503	13,583	11,431	13,858	63,723	150,214	23,067	-	3,304	3,291	37,476	2,495	570	251,564
TEXAS	132,584	35,878	47,234	133,662	203,781	554,139	-	275,699	10,670	10,856	53,949	6,055	2,930	916,498
UTAH	19,822	6,552	5,141	16,683	39,799	87,997	-	-	1,222	1,181	3,431	922	337	85,090
VERMONT	11,335	2,925	3,657	13,858	12,856	44,631	-	-	833	619	7,896	633	237	54,649
VIRGINIA	48,546	12,546	14,816	184,086	70,538	184,086	50,167	-	3,529	2,721	30,256	2,687	977	274,433
WASHINGTON	39,688	10,164	12,659	120,516	56,493	239,529	-	-	3,059	2,736	31,321	2,295	841	279,761
WEST VIRGINIA	23,743	7,414	3,657	13,858	18,967	67,639	-	-	1,393	1,734	39,488	1,052	237	111,543
WISCONSIN	47,763	13,433	12,314	13,858	34,208	121,676	-	61,856	3,636	3,944	24,384	2,744	750	218,890
WYOMING	17,285	7,063	3,657	13,858	32,937	74,800	-	-	833	914	3,431	633	237	80,846
U.S. TOTAL 5/	2,275,365	581,104	722,535	2,421,526	2,532,147	8,532,677	543,900	1,198,494	163,139	155,806	1,368,434	123,244	46,805	12,132,499
AMERICAN SAMOA	-	-	-	-	-	-	-	-	417	-	-	316	-	733
GUAM	-	-	-	-	-	-	-	-	417	-	-	316	-	733
N. MARIANAS	-	-	-	-	-	-	-	-	417	-	-	316	-	733
PUERTO RICO	27,012	3,553	7,903	-	11,452	49,920	-	-	1,706	744	3,966	1,368	552	58,335
VIRGIN ISLANDS	-	-	-	-	-	-	-	-	417	-	-	316	-	733
GRAND TOTAL 5/ 6/	2,302,377	584,658	730,438	2,421,526	2,543,599	8,582,698	543,900	1,198,494	166,800	155,550	1,372,400	125,868	47,356	12,193,766

NOTE: OFFICIAL APPOINTMENTS OF FEDERAL-AID HIGHWAY FUNDS ARE ISSUED BY FHWA NOTICE THROUGH THE OFFICE OF FISCAL SERVICES.

1/ APPOINTED PURSUANT TO THE SURFACE TRANSPORTATION AND UNIFORM RELOCATION ASSISTANCE ACT OF 1987. DOES NOT INCLUDE FUNDS FROM THE MASS TRANSIT ACCOUNT OF THE HIGHWAY TRUST FUND.

2/ RESURFACING, REHABILITATION, RESTORATION AND RECONSTRUCTION.

3/ INCLUDES \$9.9 MILLION ADMINISTERED BY THE FEDERAL HIGHWAY ADMINISTRATION AND \$116.0 MILLION ADMINISTERED BY THE NATIONAL HIGHWAY TRAFFIC SAFETY ADMINISTRATION. DOES NOT INCLUDE \$4.5 MILLION SET-ASIDE FOR GRANTS TO IMPLEMENT SCHOOL BUS SAFETY MEASURES.

4/ DOES NOT INCLUDE FUNDS FROM THE FOLLOWING PROGRAMS: EMERGENCY RELIEF, FOREST HIGHWAYS, PUBLIC LANDS HIGHWAYS, PARKWAYS AND PARK HIGHWAYS, INDIAN RESERVATION ROADS, INTERSTATE AND

INTERSTATE 4-R DISCRETIONARY, BRIDGE DISCRETIONARY, TRUCK AND BUS SAFETY GRANTS, ALLOCATED INTERSTATE HIGHWAY SUBSTITUTE OR SECTION 149 DEMONSTRATION FUNDS. THESE FUNDS ARE ALLOCATED FROM THE HIGHWAY TRUST FUND.

5/ MAY NOT ADD DUE TO ROUNDING.

6/ DOES NOT INCLUDE \$11.3 MILLION APPOINTED TO THE TERRITORIES CONSIDERED AS ONE STATE.

APPORTIONMENT OF FEDERAL-AID HIGHWAY FUNDS ¹

FOR FISCAL YEAR 1991

(DOES NOT REFLECT ANY SEQUESTRATION OF FUNDS UNDER THE GRAMM-RUDMAN-HOLLINGS ACTS)

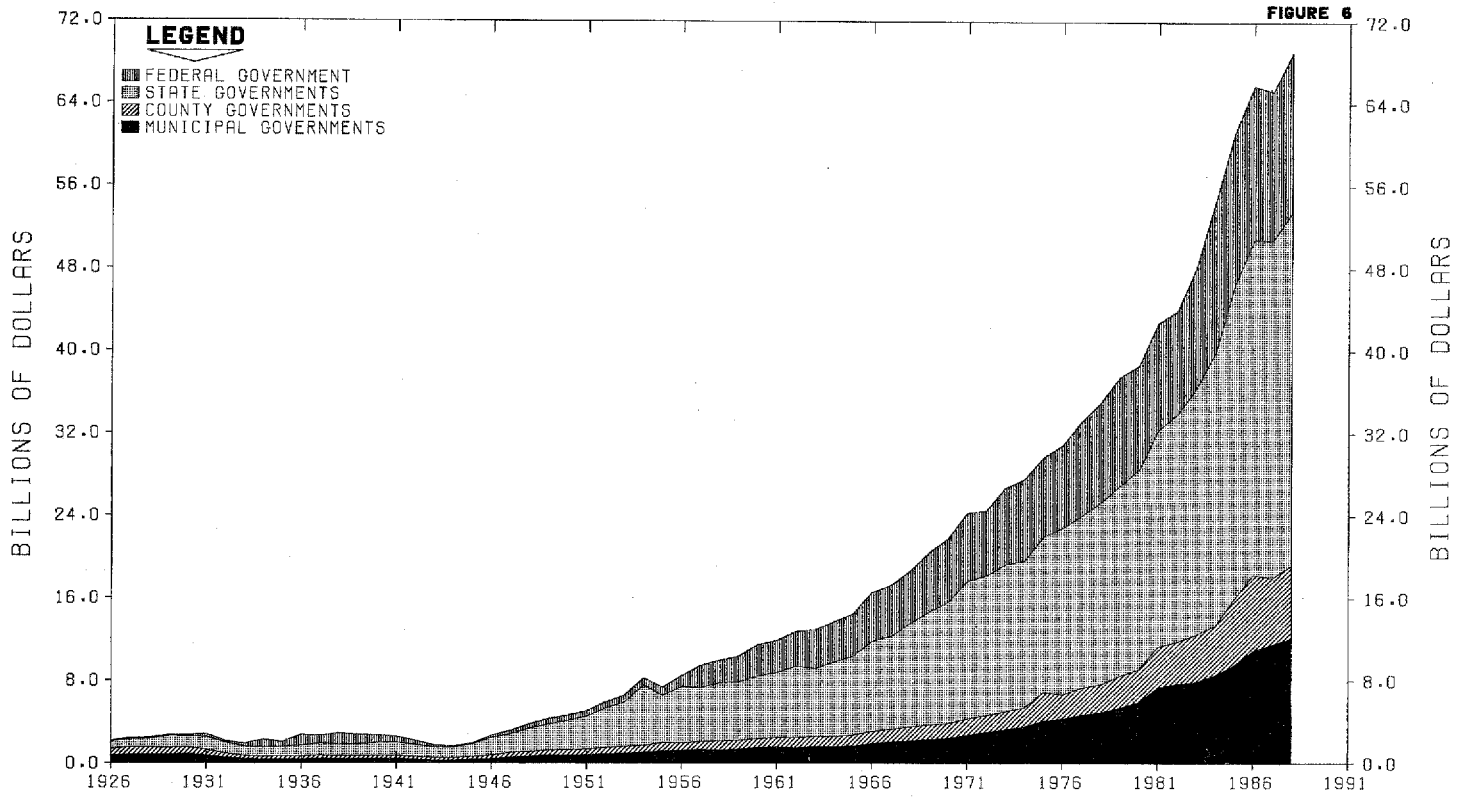
(THOUSANDS OF DOLLARS)

TABLE SS88-9-PART 2
OCTOBER 1989

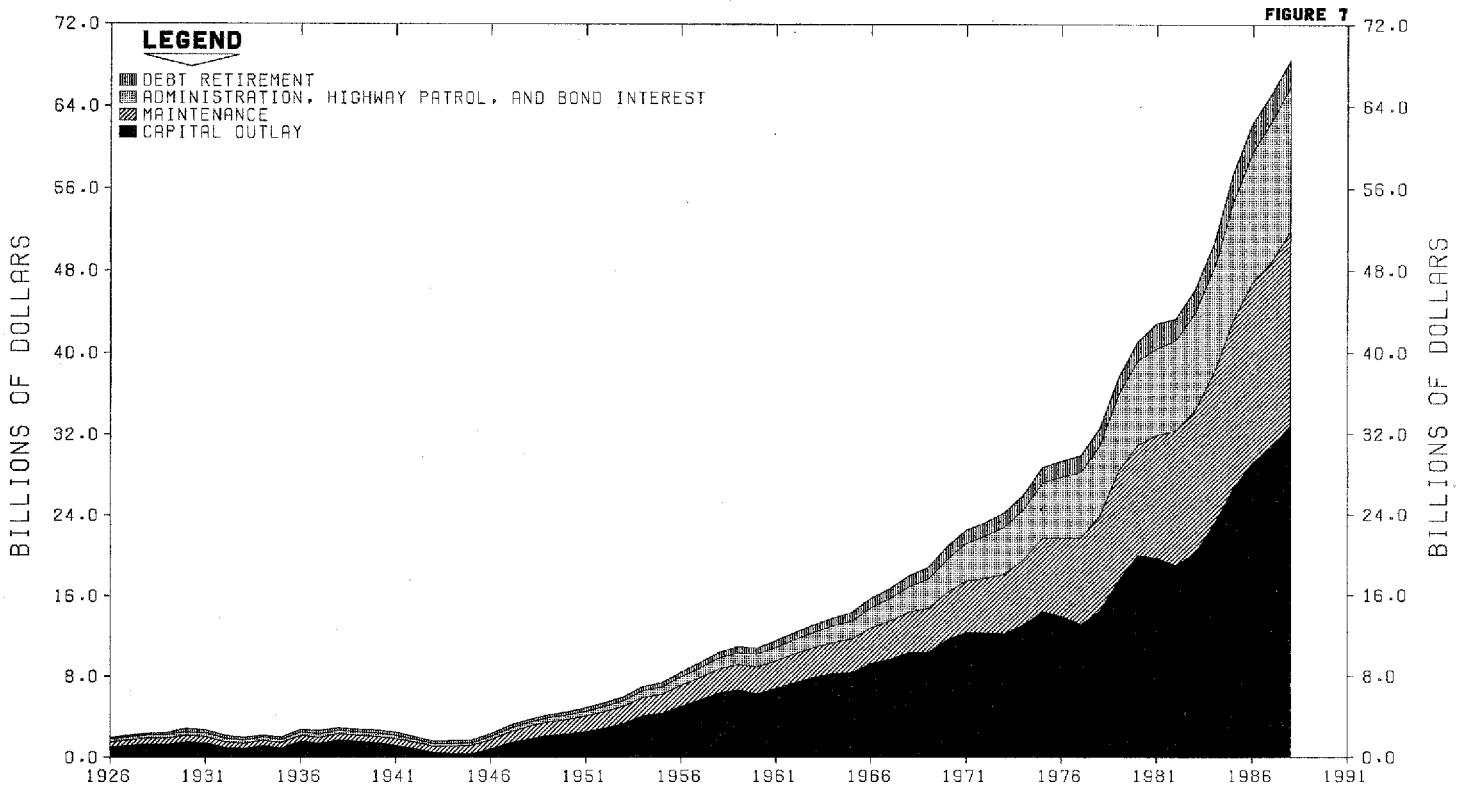
STATE	INTERSTATE	INTERSTATE 4R 2/	TOTAL	STATE
ALABAMA	64.984	48.354	113.338	ALABAMA
ALASKA	13.858	20.668	34.526	ALASKA
ARIZONA	13.858	55.963	69.821	ARIZONA
ARKANSAS	13.858	27.198	41.056	ARKANSAS
CALIFORNIA	325.014	251.644	576.658	CALIFORNIA
COLORADO	55.752	48.448	104.200	COLORADO
CONNECTICUT	107.541	32.496	140.037	CONNECTICUT
DELAWARE	13.858	12.724	26.582	DELAWARE
DIST. OF COL.	37.385	12.724	50.109	DIST. OF COL.
FLORIDA	89.633	91.618	181.251	FLORIDA
GEORGIA	50.194	91.132	141.326	GEORGIA
HAWAII	102.079	12.724	114.803	HAWAII
IDAHO	13.858	22.958	36.816	IDAHO
ILLINOIS	13.858	89.760	103.618	ILLINOIS
INDIANA	13.858	57.437	71.295	INDIANA
IOWA	13.858	36.307	50.165	IOWA
KANSAS	13.858	37.095	50.953	KANSAS
KENTUCKY	23.997	43.821	67.818	KENTUCKY
LOUISIANA	69.624	41.901	111.525	LOUISIANA
MAINE	13.858	12.724	26.582	MAINE
MARYLAND	126.777	42.905	169.682	MARYLAND
MASSACHUSETTS	713.635	33.296	746.931	MASSACHUSETTS
MICHIGAN	31.851	82.002	113.853	MICHIGAN
MINNESOTA	20.807	48.664	69.471	MINNESOTA
MISSISSIPPI	13.858	30.969	44.827	MISSISSIPPI
MISSOURI	13.858	71.917	85.775	MISSOURI
MONTANA	13.858	41.195	55.053	MONTANA
NEBRASKA	13.858	21.357	35.215	NEBRASKA
NEVADA	13.858	22.821	36.679	NEVADA
NEW HAMPSHIRE	13.858	12.724	26.582	NEW HAMPSHIRE
NEW JERSEY	132.650	32.271	164.921	NEW JERSEY
NEW MEXICO	13.858	42.497	56.355	NEW MEXICO
NEW YORK	15.297	89.499	104.796	NEW YORK
NORTH CAROLINA	41.760	46.171	87.931	NORTH CAROLINA
NORTH DAKOTA	13.858	20.207	34.065	NORTH DAKOTA
OHIO	35.090	101.456	136.546	OHIO
OKLAHOMA	13.858	35.169	49.027	OKLAHOMA
OREGON	24.771	38.061	62.832	OREGON
PENNSYLVANIA	120.711	65.535	186.246	PENNSYLVANIA
RHODE ISLAND	13.858	12.724	26.582	RHODE ISLAND
SOUTH CAROLINA	13.858	42.749	56.607	SOUTH CAROLINA
SOUTH DAKOTA	13.858	25.129	38.987	SOUTH DAKOTA
TENNESSEE	13.858	64.869	78.727	TENNESSEE
TEXAS	89.247	193.086	282.333	TEXAS
UTAH	13.858	40.218	54.076	UTAH
VERMONT	13.858	12.883	26.741	VERMONT
VIRGINIA	26.341	71.734	98.075	VIRGINIA
WASHINGTON	78.372	56.073	134.445	WASHINGTON
WEST VIRGINIA	13.858	19.135	32.993	WEST VIRGINIA
WISCONSIN	13.858	34.462	48.320	WISCONSIN
WYOMING	13.858	32.672	46.530	WYOMING
U.S. TOTAL 3/	2,771,526	2,532,147	5,303,673	U.S. TOTAL 3/
AMERICAN SAMOA	-	-	-	AMERICAN SAMOA
GUAM	-	-	-	GUAM
N. MARIANAS	-	-	-	N. MARIANAS
PUERTO RICO	-	11.452	11.452	PUERTO RICO
VIRGIN ISLANDS	-	-	-	VIRGIN ISLANDS
GRAND TOTAL 3/	2,771,526	2,543,599	5,315,125	GRAND TOTAL 3/

1/ APPORTIONED PURSUANT TO THE SURFACE TRANSPORTATION AND UNIFORM RELOCATION ASSISTANCE ACT OF 1987.
 2/ RESURFACING, REHABILITATION, RESTORATION AND RECONSTRUCTION.
 3/ MAY NOT ADD DUE TO ROUNDING.

TOTAL RECEIPTS FOR HIGHWAYS, BY GOVERNMENTAL UNITS 1926 - 1988



TOTAL DISBURSEMENTS FOR HIGHWAYS, BY FUNCTION 1926 - 1988



TOTAL RECEIPTS AND DISBURSEMENTS FOR HIGHWAYS, ALL UNITS OF GOVERNMENT

(MILLIONS OF DOLLARS)

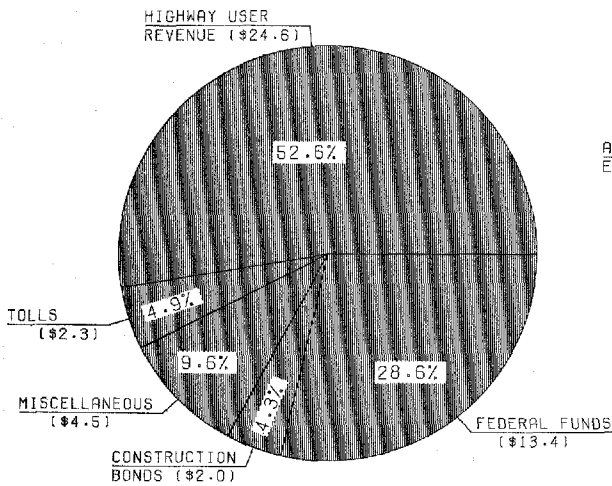
TABLE 6688-10 (HF-10)
OCTOBER 1989

ITEM	1987					1988 ^{1/}					PERCENT CHANGE 1988 1987
	FEDERAL GOVERNMENT	STATE AGENCIES AND D.C.	COUNTIES AND TOWNSHIPS	MUNICIPALITIES	TOTAL	FEDERAL GOVERNMENT	STATE AGENCIES AND D.C.	COUNTIES AND TOWNSHIPS	MUNICIPALITIES	TOTAL	
RECEIPTS BY COLLECTING AGENCIES											
IMPOSTS ON HIGHWAY USERS	11,980	26,596	450	531	39,557	13,168	27,378	477	565	41,588	5.1
INCOME FROM NONUSER SOURCES	1,465	2,423	4,973	8,377	17,238	1,041	2,767	5,967	8,983	18,158	5.3
INVESTMENT INCOME & OTHER RECEIPTS	1,414	1,682	599	965	4,660	1,265	1,774	700	1,108	4,847	4.2
BOND ISSUE PROCEEDS (PAR VALUE) ^{2/}	-	1,927	451	1,424	3,802	-	2,384	550	1,475	4,409	16.0
TOTAL RECEIPTS	14,859	32,628	6,463	11,297	55,247	15,474	34,303	7,094	12,131	69,002	5.8
DISBURSEMENTS BY EXPENDING AGENCIES											
CAPITAL OUTLAY	405	22,936	3,126	4,207	30,674	431	24,629	3,400	4,450	32,910	7.3
MAINTENANCE & TRAFFIC SERVICES	151	7,272	6,244	6,485	18,152	158	7,582	5,484	5,675	18,969	4.5
ADMINISTRATION & RESEARCH	339	2,877	771	968	4,973	311	2,893	820	1,100	5,124	3.0
HIGHWAY LAW ENFORCEMENT & SAFETY	-	3,191	590	2,181	5,962	-	3,302	640	2,200	6,142	3.0
INTEREST ON DEBT	-	1,719	362	703	2,784	-	1,867	380	780	2,827	1.5
DEBT RETIREMENT (PAR VALUE) ^{2/}	-	1,625	349	711	2,685	-	1,996	370	798	2,565	-4.5
TOTAL DISBURSEMENTS	895	39,620	10,442	14,273	65,230	500	41,569	11,064	15,004	68,537	5.1

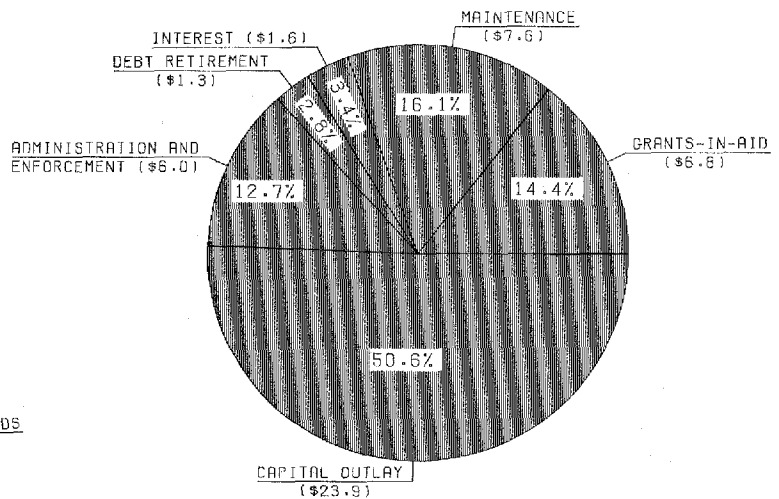
^{1/} LOCAL GOVERNMENT DATA ARE PRELIMINARY.
^{2/} EXCLUDES REFUNDING BONDS AND SHORT-TERM OBLIGATIONS. PREMIUMS AND DISCOUNTS ON SALE ARE INCLUDED WITH "INVESTMENT INCOME AND OTHER RECEIPTS"; REDEMPTION PREMIUMS AND DISCOUNTS ARE INCLUDED WITH "INTEREST ON DEBT."

FIGURE 8

STATE RECEIPTS AND DISBURSEMENTS FOR HIGHWAYS 1988 (BILLIONS OF DOLLARS)



RECEIPTS



DISBURSEMENTS

SOURCE: TABLE SF-21

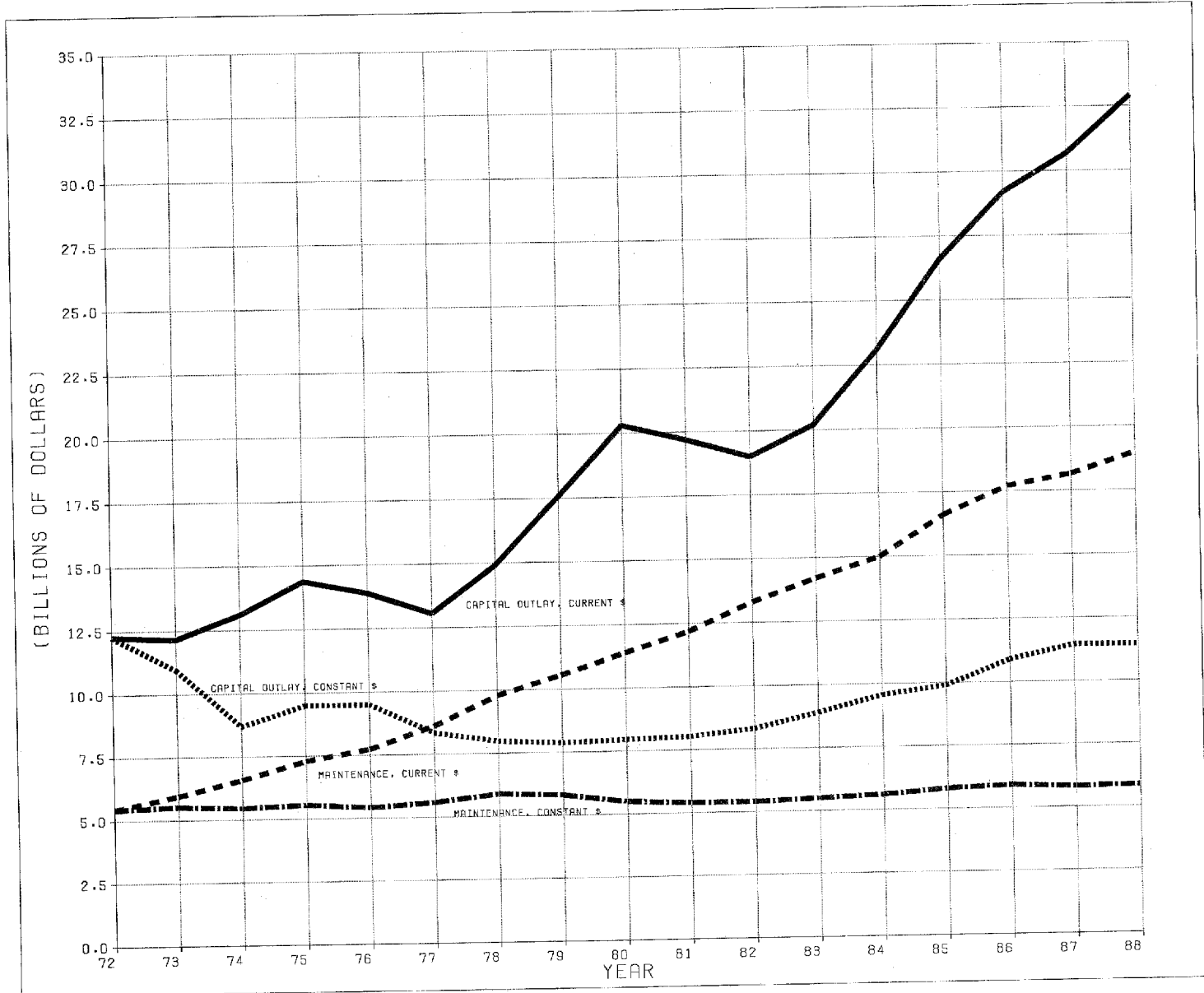
HIGHWAY PRICE TRENDS AND CONSUMER PRICE INDEX

TABLE 5588-11
OCTOBER 1989

ITEM	(1977 = 100)											
	1977	1978	1979	1980	1981	1982	1983	1984	1985	1986	1987	1988
FEDERAL AID HIGHWAY CONSTRUCTION	100.0	119.4	142.6	163.0	156.7	146.8	146.5	155.0	172.1	171.5	172.0	184.7
HIGHWAY MAINTENANCE & OPERATION	100.0	107.8	118.2	134.6	146.3	160.0	165.9	173.9	184.4	193.7	202.5	210.8
CONSUMER PRICE INDEX	100.0	107.6	119.7	135.9	151.3	159.3	166.0	171.4	177.5	180.9	187.6	195.2

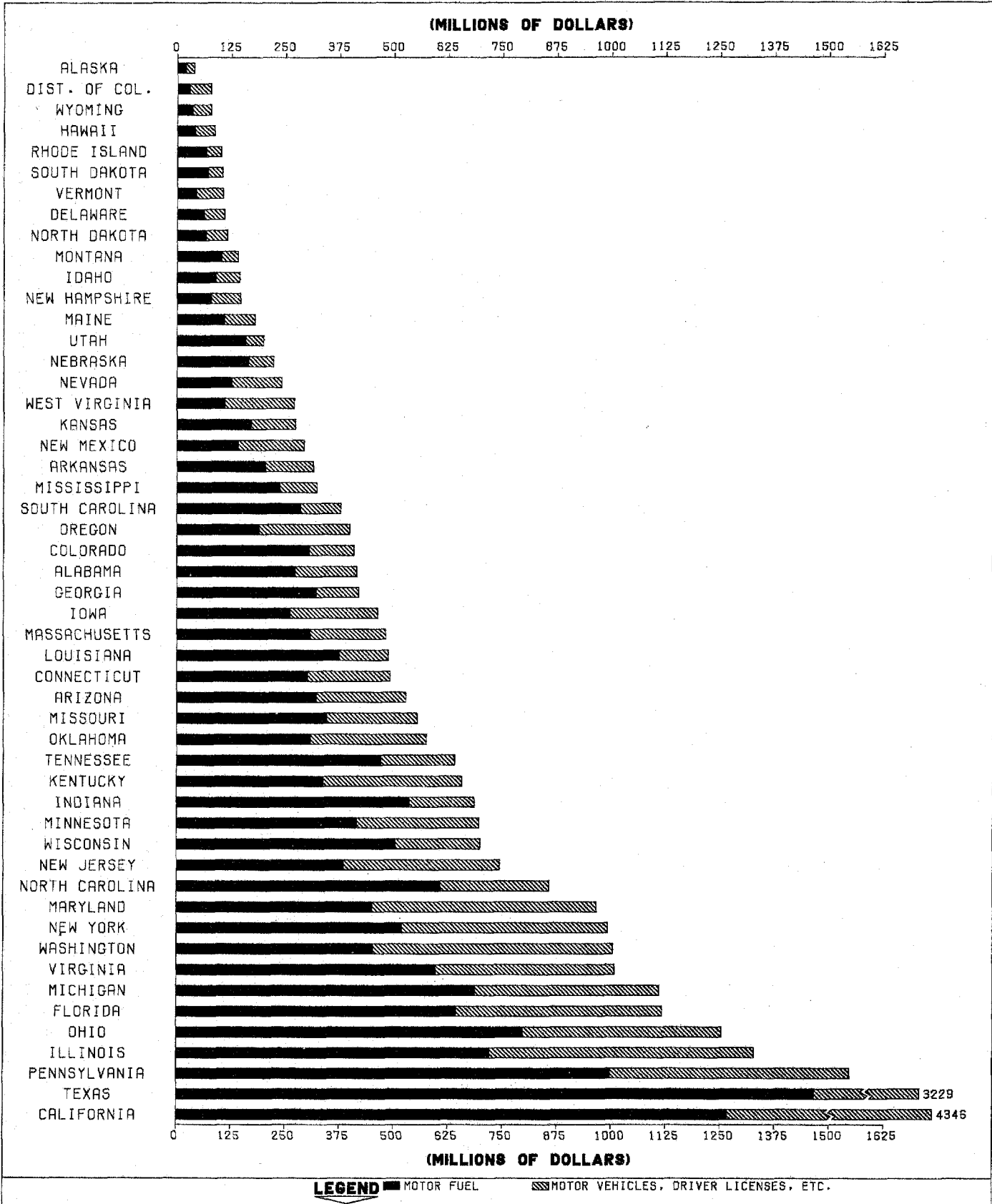
HIGHWAY EXPENDITURES BY ALL UNITS OF GOVERNMENT

FIGURE 9



TOTAL STATE HIGHWAY USER REVENUE (EXCLUDING FEDERAL AID) 1988

FIGURE 10



DISPOSITION OF RECEIPTS FROM STATE IMPOSTS ON HIGHWAY USERS - 1988¹

COMPILED FROM REPORTS
OF STATE AUTHORITIES

(THOUSANDS OF DOLLARS)

TABLE SS88-12 (OF)
OCTOBER 1989

STATE	TO STATES		TO COUNTIES 2/		TO MUNICIPALITIES		FOR OTHER THAN HIGHWAY PURPOSES 3/	TOTAL	
	AMOUNT	PERCENT CHANGE	AMOUNT	PERCENT CHANGE	AMOUNT	PERCENT CHANGE		AMOUNT	PERCENT CHANGE
		1988		1987		1988			1987
ALABAMA	238,125	15.6	137,828	-0.7	19,806	-4.3	-	395,759	8.3
ALASKA	36,766	8.8	-	0.0	-	0.0	-	36,766	8.8
ARIZONA	254,538	6.5	108,672	2.6	151,815	-1.5	-	515,025	3.2
ARKANSAS	217,024	1.4	51,428	-6.9	41,891	-3.1	-	310,343	-0.7
CALIFORNIA	1,404,157	4.9	340,282	-8.2	345,965	12.5	1,884,102	3,974,506	5.3
COLORADO	220,889	-10.2	83,695	30.1	53,737	18.2	6,637	364,958	0.7
CONNECTICUT	374,711	-2.8	10,471	0.0	33,640	73.0	41,330	460,152	10.6
DELAWARE	102,290	14.2	-	0.0	2,500	0.0	-	104,790	13.8
DIST. OF COL.	-	0.0	-	0.0	72,570	207.9	-	72,570	2.1
FLORIDA	643,967	-7.7	114,782	-17.0	63,295	3.4	125,627	947,671	-0.1
GEORGIA	335,712	4.9	32,650	-22.5	9,394	48.6	-	377,756	2.5
HAWAII	44,032	-8.0	38,217	32.1	-	0.0	-	82,249	7.1
IDAHO	76,387	0.9	48,743	16.2	13,684	8.5	2,751	141,565	8.7
ILLINOIS	867,492	5.8	203,395	1.5	144,102	-20.6	-	1,214,989	1.1
INDIANA	332,089	19.5	169,165	-20.2	145,278	14.6	-	646,532	4.8
IOWA	217,156	5.4	152,280	6.4	74,477	1.7	-	443,913	4.9
KANSAS	169,277	6.6	38,798	-0.9	29,269	2.7	-	237,344	4.8
KENTUCKY	475,578	5.5	111,964	-4.9	37,508	-4.9	-	625,050	2.8
LOUISIANA	433,225	2.6	21,779	9.4	891	25.5	-	455,895	3.0
MAINE	146,814	13.7	9,660	-4.6	6,953	-0.2	1,342	164,769	12.7
MARYLAND	604,562	26.5	146,981	-13.3	126,349	-10.1	40,255	918,147	15.1
MASSACHUSETTS 4/	-	-	-	-	-	-	-	-	-
MICHIGAN	385,998	13.4	362,569	9.8	196,826	4.4	94,646	1,040,039	10.4
MINNESOTA	426,509	11.0	196,894	10.1	59,534	9.6	2,435	685,372	10.6
MISSISSIPPI	214,770	70.3	85,480	53.3	4,182	-9.9	11	304,443	63.2
MISSOURI	409,132	17.4	41,987	20.4	63,055	20.6	-	514,174	18.0
MONTANA	98,302	8.7	20,585	-7.7	8,843	1.4	9,008	136,738	11.0
NEBRASKA	130,542	3.6	42,160	9.4	39,672	4.7	1,000	213,374	4.9
NEVADA	146,076	30.9	19,123	90.9	13,289	-3.9	47,113	225,601	20.6
NEW HAMPSHIRE	111,894	1.8	439	-41.8	6,768	-1.7	18,783	137,884	2.4
NEW JERSEY	370,500	-40.2	13,287	-18.2	14,784	-62.1	282,407	680,978	0.9
NEW MEXICO	245,807	30.0	29,314	-24.3	2,505	-9.4	4,851	282,477	22.5
NEW YORK	369,631	-14.3	236,087	-2.0	194,651	17.9	41,601	841,970	0.6
NORTH CAROLINA	741,416	3.4	-	0.0	66,660	4.6	2,481	810,557	3.7
NORTH DAKOTA	50,594	16.3	39,531	19.3	13,272	17.2	6,365	109,762	15.0
OHIO	767,249	27.5	281,673	6.8	104,597	0.8	37,831	1,191,350	22.9
OKLAHOMA	235,204	12.7	133,724	-1.1	12,357	-17.7	170,102	551,387	11.0
OREGON	200,072	5.7	93,524	60.0	55,845	-7.6	-	349,441	13.4
PENNSYLVANIA	1,304,161	2.8	135,922	22.6	71,104	3.9	-	1,511,187	4.4
RHODE ISLAND	62,406	-0.9	90	0.0	11,284	24.0	15,198	88,978	6.2
SOUTH CAROLINA	332,311	0.2	20,249	0.1	-	0.0	2,738	355,298	0.2
SOUTH DAKOTA	74,687	6.0	14,203	4.9	10,482	190.2	-	99,372	13.4
TENNESSEE	293,288	-1.6	246,889	10.1	65,890	1.6	412	606,479	3.3
TEXAS	1,404,427	-15.2	69,798	-12.7	636	-51.7	1,625,742	3,100,603	5.6
UTAH	136,151	1.1	29,007	40.6	21,725	25.8	-	186,883	8.3
VERMONT	62,251	-0.4	20,407	15.1	11,966	-6.5	1,380	96,004	3.0
VIRGINIA	800,933	-9.8	10,305	1.3	123,542	5.3	-	934,780	-8.0
WASHINGTON	386,536	-2.1	136,691	3.8	60,311	16.9	362,284	945,822	10.8
WEST VIRGINIA	262,445	6.2	-	0.0	-	0.0	-	262,445	6.2
WISCONSIN	398,997	24.6	101,898	7.1	102,915	5.5	49,379	653,189	15.3
WYOMING	53,415	7.1	13,736	47.8	5,536	-8.0	-	72,687	11.5
TOTAL	17,670,495	0.6	4,216,362	2.4	2,715,355	2.4	4,877,831	29,480,043	4.9

- 1/ COLUMNS MAY NOT ADD DUE TO ROUNDING. EXCLUDES AMOUNTS USED FOR COLLECTION COSTS.
 2/ SOME STATES INCLUDE TOWNSHIPS.
 3/ INCLUDES ALLOCATIONS FOR MASS TRANSPORTATION PROGRAMS.
 4/ 1988 STATE HIGHWAY FINANCE DATA NOT REPORTED FOR MASSACHUSETTS.

STATE HIGHWAY CAPITAL OUTLAY AND MAINTENANCE - 1988¹

CLASSIFIED BY FUNCTIONAL SYSTEMS

TABLE SS88-13 (SF-12)
OCTOBER 1989

(THOUSANDS OF DOLLARS)

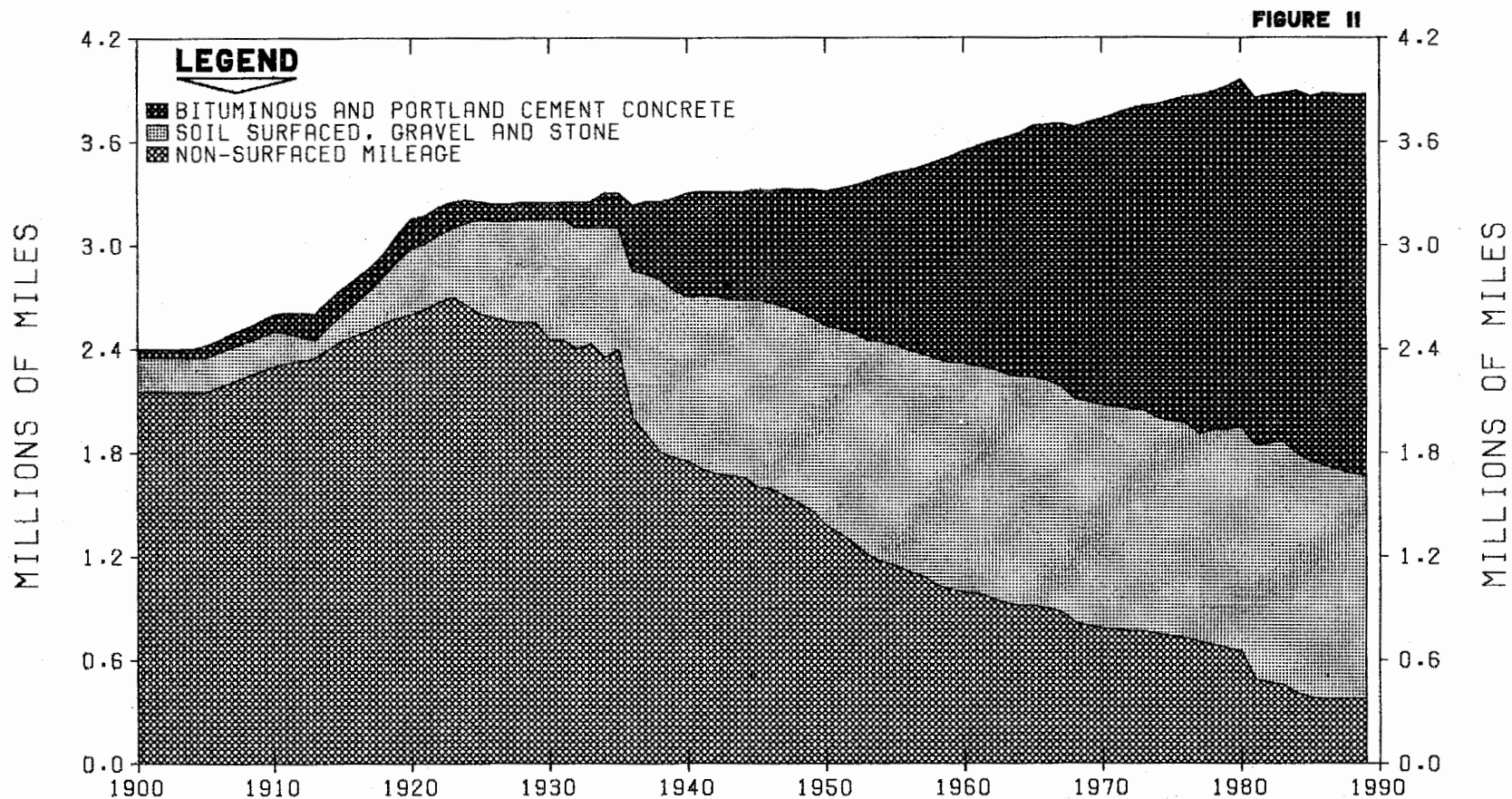
STATE	CAPITAL OUTLAY				MAINTENANCE				GRAND TOTAL	STATE
	ARTERIALS		COLLECTORS	TOTAL	ARTERIALS		COLLECTORS	TOTAL		
	INTERSTATE	OTHER			INTERSTATE	OTHER				
ALABAMA	171,503	167,342	44,615	383,459	20,406	18,945	6,908	46,259	429,718	ALABAMA
ALASKA	53,276	55,391	45,930	154,597	-	54,650	-	54,650	209,247	ALASKA
ARIZONA	-	-	-	-	-	-	-	-	-	ARIZONA
ARKANSAS	57,625	119,175	49,610	226,410	10,036	37,743	47,825	95,604	322,014	ARKANSAS
CALIFORNIA	351,278	984,996	13,015	1,349,289	105,009	354,803	30,533	490,345	1,839,634	CALIFORNIA
COLORADO	134,882	136,111	23,800	294,793	27,762	56,298	23,144	107,204	401,997	COLORADO
CONNECTICUT	212,180	238,045	58,046	508,271	5,988	38,331	23,979	68,297	576,568	CONNECTICUT
DELAWARE	38,495	73,827	28,064	140,386	20,864	2,478	2,429	25,771	166,157	DELAWARE
DIST. OF COL.	33,980	38,369	24,229	96,578	-	-	-	-	96,578	DIST. OF COL.
FLORIDA	363,917	815,753	34,604	1,214,274	30,732	179,925	4,831	215,488	1,429,762	FLORIDA
GEORGIA	221,790	347,937	64,543	634,271	13,195	64,717	93,993	171,906	806,177	GEORGIA
HAWAII	39,401	47,226	7,157	93,784	3,103	10,751	2,607	16,461	110,245	HAWAII
IDAHO	60,400	38,150	22,429	120,978	7,316	23,818	12,259	43,394	164,372	IDAHO
ILLINOIS	358,371	854,839	33,009	1,246,219	80,440	103,180	32,900	216,520	1,462,739	ILLINOIS
INDIANA	185,928	186,907	58,625	431,460	53,972	88,607	72,948	215,527	646,987	INDIANA
IOWA	54,163	223,484	-	277,647	13,382	91,167	-	104,549	382,196	IOWA
KANSAS	117,986	108,181	27,500	253,667	30,023	45,901	2,085	78,008	331,675	KANSAS
KENTUCKY	110,015	252,211	159,843	522,069	14,594	38,307	68,382	121,282	643,351	KENTUCKY
LOUISIANA	-	-	-	-	-	-	-	-	-	LOUISIANA
MAINE	13,989	50,216	24,205	88,409	16,625	21,406	47,227	85,258	173,667	MAINE
MARYLAND	327,841	239,172	40,504	607,518	18,879	2,173	-	21,052	628,570	MARYLAND
MASSACHUSETTS	-	-	-	-	-	-	-	-	-	MASSACHUSETTS
MICHIGAN	302,554	148,640	7,195	458,389	69,113	52,444	2,303	123,859	582,248	MICHIGAN
MINNESOTA	295,817	172,017	6,632	474,466	16,737	90,410	9,479	116,626	591,092	MINNESOTA
MISSISSIPPI	51,719	156,472	62,561	270,752	5,518	25,894	18,319	49,730	320,482	MISSISSIPPI
MISSOURI	90,327	248,308	72,104	410,739	24,322	54,292	129,801	208,415	619,154	MISSOURI
MONTANA	38,941	75,065	9,380	123,385	7,012	25,903	2,029	34,944	158,329	MONTANA
NEBRASKA	51,869	104,695	34,994	191,560	3,648	35,504	3,065	42,218	233,778	NEBRASKA
NEVADA	41,694	77,634	33,394	152,721	7,221	16,280	20,798	44,299	197,020	NEVADA
NEW HAMPSHIRE	25,665	47,767	11,834	85,266	15,652	21,754	52,592	89,997	175,263	NEW HAMPSHIRE
NEW JERSEY	249,575	334,923	24,900	609,398	59,758	152,338	724	212,819	822,217	NEW JERSEY
NEW MEXICO	79,781	101,575	53,423	234,779	10,888	26,666	29,655	67,209	301,988	NEW MEXICO
NEW YORK	261,972	644,311	89,374	995,657	6,299	33,619	39,255	79,174	1,074,831	NEW YORK
NORTH CAROLINA	148,546	272,092	63,150	483,788	10,722	46,435	68,659	125,816	609,604	NORTH CAROLINA
NORTH DAKOTA	20,350	58,658	19,744	98,652	5,016	25,335	4,849	35,200	133,852	NORTH DAKOTA
OHIO	274,774	330,785	128,736	734,295	65,119	34,983	105,738	205,841	940,136	OHIO
OKLAHOMA	93,062	151,243	73,344	317,648	14,378	-	-	14,378	332,026	OKLAHOMA
OREGON	69,774	156,669	43,283	269,726	13,053	69,684	15,390	98,127	367,853	OREGON
PENNSYLVANIA	551,659	705,366	81,674	1,338,699	93,796	435,284	96,845	625,926	1,964,625	PENNSYLVANIA
RHODE ISLAND	-	-	-	-	-	-	-	-	-	RHODE ISLAND
SOUTH CAROLINA	63,926	155,288	20,314	239,528	166	13,395	21,561	35,123	274,651	SOUTH CAROLINA
SOUTH DAKOTA	9,006	99,610	28,588	138,204	5,204	22,745	4,851	32,800	169,004	SOUTH DAKOTA
TENNESSEE	135,393	254,800	68,088	458,280	42,377	127,131	-	169,506	627,786	TENNESSEE
TEXAS	501,520	1,099,763	398,867	2,000,150	87,509	225,483	221,770	534,762	2,534,912	TEXAS
UTAH	105,424	101,030	18,999	225,453	25,100	21,203	6,300	52,603	278,056	UTAH
VERMONT	15,396	36,800	11,856	64,052	7,668	15,118	13,918	35,705	100,757	VERMONT
VIRGINIA	241,775	431,337	90,527	763,639	67,244	150,479	92,801	310,524	1,074,163	VIRGINIA
WASHINGTON	232,386	174,237	19,671	426,294	17,965	114,406	4,045	136,416	562,710	WASHINGTON
WEST VIRGINIA	43,226	129,211	70,292	242,729	20,924	28,373	36,083	85,380	328,109	WEST VIRGINIA
WISCONSIN	45,373	297,550	33,523	378,445	17,516	97,229	14,240	128,984	505,429	WISCONSIN
WYOMING	48,740	68,481	28,063	145,284	15,625	22,098	12,982	50,704	195,988	WYOMING
TOTAL 2/	6,997,264	11,610,559	2,364,237	20,972,057	1,207,876	3,217,685	1,500,102	5,925,660	26,897,717	TOTAL 2/
PERCENT 2/	33.36	55.36	11.27	100.00	20.38	54.30	25.32	100.00	-	PERCENT 2/

1/ THIS TABLE SHOWS CAPITAL OUTLAY AND MAINTENANCE EXPENDITURES BY FUNCTIONAL SYSTEMS. THE DATA ARE NOT COMPLETE FOR ALL STATES, AND ENTRIES FOR

SOME STATES MAY INCLUDE ESTIMATES.

2/ THE TOTALS AND PERCENTAGES SHOWN APPLY TO THE 47 REPORTING STATES.

TOTAL ROAD AND STREET MILEAGE IN THE UNITED STATES BY SURFACE TYPE 1900 - 1989



NOTE: BEGINNING WITH 1981 DATA, ONLY PUBLIC ROAD MILEAGE, AS DEFINED BY 23 U. S. C. 402, WAS REPORTED TO FHWA BY THE STATES. PRIMITIVE ROADS AND OTHERS NOT OPEN TO PUBLIC TRAVEL OR MAINTAINED BY PUBLIC AUTHORITY, WHILE INCLUDED IN MILEAGE TOTALS PRIOR TO 1981, ARE NOT REFLECTED IN THE DATA, THEREAFTER. 1989 DATA ARE ESTIMATED.

PUBLIC ROAD AND STREET MILEAGE - 1988¹

BY FUNCTIONAL SYSTEM

MILEAGE AS OF DECEMBER 31, 1988 COMPILED FROM REPORTS OF STATE AUTHORITIES

TABLE 5588-14 (HM-20)
OCTOBER 1989

STATE	RURAL							URBAN							TOTAL MILEAGE
	INTERSTATE	OTHER PRINCIPAL ARTERIAL	MINOR ARTERIAL	MAJOR COLLECTOR	MINOR COLLECTOR	LOCAL	TOTAL	INTERSTATE	OTHER FREEWAYS AND EXPRESSWAYS	OTHER PRINCIPAL ARTERIAL	MINOR ARTERIAL	COLLECTOR	LOCAL	TOTAL	
ALABAMA	625	1,987	3,898	11,484	6,996	48,584	73,574	258	-	1,012	1,603	1,713	12,258	16,844	90,418
ALASKA	1,039	53	894	1,992	799	5,652	10,429	50	9	61	74	204	1,362	1,760	12,189
ARIZONA 1/	1,039	1,037	2,248	3,878	3,241	47,324	58,767	123	41	1,014	1,507	1,031	7,799	11,515	70,282
ARKANSAS	419	1,932	3,167	12,392	6,580	44,950	69,440	123	103	632	989	1,004	4,803	7,654	77,094
CALIFORNIA	1,412	2,933	6,614	12,821	9,904	57,692	91,376	978	1,253	5,921	8,263	7,685	47,086	71,186	162,562
COLORADO	789	1,894	1,949	7,290	12,028	42,072	66,022	152	147	922	1,160	7,603	47,086	71,186	162,562
CONNECTICUT	109	225	472	960	1,136	6,086	8,988	233	168	711	947	1,918	6,813	10,810	19,798
DELAWARE	-	153	182	606	154	2,723	3,818	41	-	135	132	172	1,089	1,569	5,387
DIST. OF COL.	-	-	-	-	-	-	-	12	24	99	152	156	659	1,102	1,102
FLORIDA	993	2,544	3,581	4,684	5,199	39,657	56,658	396	282	1,897	2,420	4,784	38,152	47,931	104,589
GEORGIA	884	2,695	5,878	14,029	7,341	56,223	87,050	360	144	1,447	2,090	1,820	14,477	20,338	107,388
HAWAII	5	13	385	480	113	1,680	2,676	34	57	94	116	180	924	1,406	4,081
IDAHO	534	1,650	972	4,926	3,816	46,369	58,267	71	-	186	356	385	1,398	2,396	60,663
ILLINOIS	1,417	205	7,534	14,262	3,597	76,914	103,929	522	74	1,993	3,536	3,278	22,174	31,577	135,506
INDIANA	851	1,083	3,115	9,633	10,370	48,796	73,848	266	115	1,339	2,259	1,925	11,836	17,740	91,588
IOWA	650	3,145	4,957	13,506	16,398	65,124	103,780	132	-	897	1,290	1,040	5,349	8,708	112,488
KANSAS	711	3,263	4,461	22,679	9,332	83,622	124,068	159	88	561	994	778	6,317	8,897	132,965
KENTUCKY	579	1,578	1,771	7,355	9,316	41,652	62,251	184	87	488	1,018	901	4,919	7,597	69,848
LOUISIANA	571	1,076	1,580	7,353	4,306	31,269	46,155	180	61	998	1,102	1,136	8,790	12,267	58,422
MAINE	313	736	1,088	3,278	2,254	11,884	19,553	53	19	217	296	392	1,436	2,413	21,966
MARYLAND	169	495	1,144	1,907	1,894	10,605	16,214	224	190	881	949	1,174	8,601	12,019	28,233
MASSACHUSETTS	170	244	769	2,007	1,950	8,060	13,200	394	276	1,844	2,422	2,725	12,948	20,609	33,809
MICHIGAN	766	2,364	3,882	17,161	7,529	59,197	90,899	445	201	2,002	3,709	2,885	17,754	26,996	117,895
MINNESOTA	688	3,357	5,323	16,619	11,905	77,802	115,694	217	133	587	1,475	1,834	9,704	13,950	129,644
MISSISSIPPI	560	1,562	4,125	11,718	2,934	44,013	64,912	124	31	606	680	762	5,054	7,257	72,169
MISSOURI	843	2,712	3,734	18,116	5,411	73,686	104,502	334	256	1,036	1,609	1,433	10,718	15,386	119,888
MONTANA	1,144	2,099	3,303	6,658	9,437	46,570	69,211	47	-	172	229	229	1,601	2,260	71,471
NEBRASKA	444	2,714	4,213	11,449	9,236	59,496	87,552	37	11	376	532	403	3,584	4,943	92,495
NEVADA	503	611	1,177	2,328	2,451	34,710	41,780	42	27	172	346	438	2,028	3,053	44,893
NEW HAMPSHIRE	180	321	655	1,237	1,237	8,679	12,309	44	34	189	354	341	1,440	2,402	14,711
NEW JERSEY	126	266	668	1,770	1,238	7,699	11,764	267	266	1,336	2,865	1,902	15,797	22,435	34,197
NEW MEXICO	904	1,195	2,152	4,551	2,023	38,506	49,331	95	-	467	362	339	3,344	4,607	53,938
NEW YORK	855	1,783	4,624	6,308	10,795	48,706	73,071	646	740	2,404	4,149	3,937	25,666	37,542	110,613
NORTH CAROLINA	815	2,047	2,054	10,480	9,122	50,924	75,242	221	207	1,690	2,145	1,360	12,948	18,571	93,813
NORTH DAKOTA	530	1,207	4,197	11,112	7,475	60,012	84,533	40	-	155	265	226	1,092	1,778	66,311
OHIO	847	1,692	3,307	11,649	7,293	57,324	82,112	718	357	2,148	2,793	4,125	21,087	31,228	113,340
OKLAHOMA	723	1,879	3,220	21,394	3,105	68,977	99,298	204	195	749	1,883	1,205	7,869	12,105	111,403
OREGON	595	2,271	2,567	9,644	7,087	62,736	84,900	132	55	553	913	1,143	5,899	8,695	93,595
PENNSYLVANIA	1,142	1,774	6,021	7,978	6,418	63,049	88,382	386	362	2,838	2,827	3,177	18,112	27,702	116,084
RHODE ISLAND	21	73	88	206	137	943	1,468	49	63	236	433	448	3,149	4,378	5,846
SOUTH CAROLINA	673	1,520	3,439	8,519	4,005	36,219	54,375	117	34	686	894	1,154	6,442	9,327	63,702
SOUTH DAKOTA	631	2,317	3,387	11,478	6,874	46,974	71,661	46	3	171	244	182	1,139	1,759	73,420
TENNESSEE	787	1,044	4,154	5,450	6,450	46,351	68,546	275	-	1,298	957	1,798	10,764	15,092	83,638
TEXAS	2,277	7,907	6,927	37,916	18,552	142,898	216,477	930	795	3,758	5,373	6,811	66,290	83,967	300,444
UTAH	771	661	1,863	3,033	4,299	26,927	37,554	140	13	246	421	479	4,082	5,381	42,935
VERMONT	300	285	762	1,946	1,019	8,799	13,111	20	15	91	116	132	604	978	14,089
VIRGINIA	771	1,505	3,541	10,208	2,403	33,619	52,047	298	173	1,005	1,618	1,392	10,359	14,845	66,892
WASHINGTON	519	1,801	2,586	7,296	6,513	46,584	65,299	244	196	1,241	1,671	1,776	11,119	16,247	81,546
WEST VIRGINIA	429	523	1,728	6,371	2,169	20,379	31,599	90	64	199	314	400	1,907	2,974	34,573
WISCONSIN	517	3,339	4,991	13,657	6,462	66,399	95,365	123	163	1,020	1,910	1,422	9,626	14,264	109,629
WYOMING	864	1,008	2,111	2,493	7,459	24,677	38,612	50	3	165	201	296	1,175	1,890	40,502
TOTAL	33,303	80,778	147,456	436,267	294,072	2,139,793	3,131,669	11,326	7,555	50,955	74,928	77,570	517,140	739,474	3,871,143
PERCENT - AREA	1.1	2.6	4.7	13.9	9.4	68.3	100.0	1.5	1.0	6.9	10.1	10.5	70.0	100.0	-
PERCENT - TOTAL	0.9	2.1	3.8	11.3	7.6	55.2	80.9	0.3	0.2	1.3	1.9	2.0	13.4	19.1	100.0

1/ 1988 DATA OBTAINED FROM ALL STATES' SUBMISSION OF HPMS AREA-WIDE DATA. ARIZONA ESTIMATED BY FHWA.

PUBLIC ROAD AND STREET MILEAGE - 1988

CLASSIFIED BY FEDERAL-AID SYSTEM

MILEAGE AS OF DECEMBER 31, 1988 COMPILED
IN COOPERATION WITH STATE AUTHORITIES

TABLE SS88-15 (HM-15)
OCTOBER 1989

STATE	FEDERAL-AID INTERSTATE 1/			OTHER FEDERAL-AID PRIMARY 2/			FEDERAL-AID URBAN	FEDERAL-AID SECONDARY	ALL FEDERAL-AID SYSTEMS			ALL NON-FEDERAL-AID SYSTEMS			TOTAL
	RURAL	URBAN	TOTAL	RURAL	URBAN	TOTAL			RURAL	URBAN	TOTAL	RURAL	URBAN	TOTAL	
ALABAMA	625	258	883	5,884	858	6,742	2,781	11,484	17,993	3,897	21,890	55,581	12,947	68,528	90,418
ALASKA 3/ 4/	1,039	50	1,089	947	38	985	253	1,951	3,937	341	4,278	6,492	1,419	7,911	12,189
ARIZONA 5/	1,039	123	1,162	3,270	230	3,500	3,006	3,294	7,603	3,359	10,962	51,164	8,156	59,320	70,282
ARKANSAS 3/	419	123	542	4,736	477	5,213	1,143	7,249	12,404	1,743	14,147	57,036	5,911	62,947	77,094
CALIFORNIA	1,412	978	2,390	9,530	1,556	11,086	17,610	11,064	22,006	20,144	42,150	69,370	51,042	120,412	162,562
COLORADO	789	152	941	3,836	445	4,281	2,297	3,411	8,036	2,894	10,930	57,986	8,233	66,219	77,149
CONNECTICUT	109	233	342	688	577	1,265	2,957	902	1,699	3,767	5,466	7,289	7,043	14,332	19,798
DELAWARE	-	41	41	334	101	435	311	602	936	453	1,389	2,882	1,116	3,998	5,367
DIST. OF COL.	-	12	12	-	180	180	236	-	-	428	428	-	674	674	1,102
FLORIDA	993	396	1,389	5,767	2,288	8,055	4,590	4,391	11,151	7,274	18,425	45,507	40,657	86,164	104,589
GEORGIA	884	360	1,244	8,573	1,519	10,092	3,970	14,008	23,465	5,849	29,314	63,585	14,489	78,074	107,388
HAWAII	5	34	39	388	124	512	322	455	848	480	1,328	1,828	925	2,753	4,081
IDAHO	534	71	605	2,622	47	2,669	723	4,194	7,350	841	8,191	50,917	1,555	52,472	60,663
ILLINOIS 3/	1,417	522	1,939	7,739	1,902	9,641	6,753	12,957	22,113	9,177	31,290	81,816	22,400	104,216	135,506
INDIANA	851	266	1,117	4,198	774	4,972	4,580	9,593	14,642	5,620	20,262	59,206	12,120	71,326	91,588
IOWA	650	132	782	8,102	705	8,807	2,438	13,506	22,258	3,275	25,533	81,522	5,433	86,955	112,488
KANSAS	711	159	870	7,724	329	8,053	1,590	22,605	31,040	2,078	33,118	93,028	6,819	99,847	132,965
KENTUCKY 3/	579	184	763	3,349	468	3,817	1,919	7,320	11,248	2,571	13,819	51,003	5,026	56,029	69,848
LOUISIANA	571	180	751	2,646	498	3,144	2,166	7,353	10,570	2,844	13,414	35,585	9,423	45,008	58,422
MAINE 3/	313	53	366	1,823	185	2,008	705	2,742	4,878	943	5,821	14,675	1,470	16,145	21,966
MARYLAND	169	224	393	1,639	564	2,203	2,129	1,907	3,715	2,917	6,632	12,499	9,102	21,601	28,233
MASSACHUSETTS	170	394	564	1,013	1,201	2,214	5,906	2,007	3,910	7,501	10,691	10,010	13,108	23,118	33,809
MICHIGAN	766	445	1,211	6,246	982	7,228	5,645	17,106	24,118	7,072	31,190	66,781	19,924	86,705	117,995
MINNESOTA	688	217	905	8,680	623	9,303	2,203	16,619	25,987	3,043	29,030	89,707	10,907	100,614	129,644
MISSISSIPPI	560	124	684	5,420	342	5,762	1,721	11,718	17,698	2,187	19,885	47,214	5,070	52,284	72,169
MISSOURI	843	334	1,177	6,446	547	6,993	2,434	18,062	25,351	3,315	28,666	79,151	12,071	91,222	119,888
MONTANA	1,144	47	1,191	5,352	105	5,457	360	4,732	11,228	512	11,740	57,983	7,748	59,731	71,471
NEBRASKA	444	37	481	6,927	267	7,194	1,055	11,449	18,820	1,369	20,179	66,732	3,584	72,316	92,495
NEVADA	503	42	545	1,788	60	1,848	559	2,315	4,606	661	5,267	37,174	2,392	39,566	44,833
NEW HAMPSHIRE	180	44	224	967	169	1,136	727	1,235	2,372	940	3,312	9,937	1,462	11,399	14,711
NEW JERSEY	125	267	392	811	661	1,472	5,352	1,723	2,659	6,280	8,939	9,105	16,153	25,258	34,197
NEW MEXICO	904	95	999	3,347	227	3,574	569	3,936	8,187	891	9,078	41,144	3,716	44,860	53,938
NEW YORK 3/	855	646	1,501	6,407	1,985	8,392	8,749	6,308	13,570	11,380	24,950	59,501	26,162	85,663	110,613
NORTH CAROLINA	615	221	836	3,844	661	4,505	2,804	10,297	14,756	3,686	18,442	60,486	14,865	75,371	93,813
NORTH DAKOTA	530	40	570	5,402	137	5,539	487	10,577	16,509	664	17,173	68,024	1,114	69,138	86,311
OHIO	847	718	1,565	4,999	1,681	6,580	7,842	11,649	17,495	10,141	27,636	64,617	21,087	85,704	113,940
OKLAHOMA	723	204	927	4,875	438	5,313	2,975	11,663	17,261	3,617	20,878	82,037	8,488	90,525	111,403
OREGON	595	132	727	4,669	393	5,062	1,998	7,811	13,075	2,523	15,598	71,825	6,172	77,997	93,595
PENNSYLVANIA	1,142	386	1,528	7,795	2,153	9,958	7,041	7,978	16,915	9,590	26,505	71,467	18,112	89,579	116,084
RHODE ISLAND	21	49	70	158	238	396	924	203	382	1,211	1,593	1,086	3,167	4,253	5,846
SOUTH CAROLINA	673	117	790	4,959	712	5,671	1,174	8,519	14,151	2,003	16,154	40,224	7,324	47,548	63,702
SOUTH DAKOTA	631	46	677	5,704	418	6,122	1,62	11,478	17,813	626	18,439	53,848	1,133	54,981	73,420
TENNESSEE 3/	787	275	1,062	5,198	907	6,105	3,131	5,448	11,433	4,313	15,746	57,113	10,779	67,892	83,638
TEXAS 3/	2,277	930	3,207	14,828	1,921	16,749	7,689	32,600	49,705	10,640	60,245	166,772	73,427	240,199	300,444
UTAH 3/	771	140	911	2,490	106	2,596	921	2,644	5,905	1,167	7,072	31,649	4,214	35,863	42,935
VERMONT 4/	300	20	320	1,047	73	1,120	281	1,946	3,293	374	3,667	9,818	604	10,422	14,089
VIRGINIA	771	298	1,069	4,736	647	5,383	3,416	10,203	15,710	4,361	20,071	36,937	10,484	46,821	66,892
WASHINGTON 3/	519	244	763	4,387	651	5,038	4,181	7,270	12,176	6,076	17,252	53,123	11,171	64,294	81,546
WEST VIRGINIA 4/	429	90	519	2,251	191	2,442	783	6,370	9,050	1,064	10,114	22,549	1,910	24,459	34,673
WISCONSIN	517	123	640	8,227	949	9,276	2,947	12,960	21,804	4,019	25,823	73,561	10,245	83,806	109,629
WYOMING	864	50	914	2,866	125	2,991	520	2,267	5,997	695	6,692	32,615	1,195	33,810	40,502
TOTAL 3/	33,303	11,326	44,629	225,724	33,345	259,069	147,035	400,081	659,108	191,706	850,814	2,472,561	547,788	3,020,329	3,871,143
PERCENT - TOTAL	0.9	0.3	1.2	5.8	0.9	6.7	3.8	10.3	17.0	5.0	22.0	63.8	14.2	78.0	100.0

26

1/ ALTHOUGH THE INTERSTATE SYSTEM IS PART OF THE FEDERAL-AID PRIMARY SYSTEM, ITS MILEAGE IS SHOWN SEPARATELY.
2/ DOES NOT INCLUDE THE INTERSTATE SYSTEM.
3/ EXCLUDES FERRY ROUTE MILEAGE: ALASKA - 844 MILES OF RURAL PRIMARY AND 640 MILES OF SECONDARY; ARKANSAS - 1 MILE OF SECONDARY; ILLINOIS - 2 MILES OF SECONDARY; KENTUCKY - 1 MILE OF URBAN AND 1 MILE OF SECONDARY; MAINE - 3 MILES OF

SECONDARY; NEW YORK - 12 MILES OF RURAL PRIMARY AND 1 MILE OF SECONDARY; TENNESSEE - 1 MILE OF SECONDARY; TEXAS - 2 MILES OF URBAN PRIMARY, 5 MILES OF URBAN AND 1 MILE OF SECONDARY; UTAH - 3 MILES OF RURAL PRIMARY; AND WASHINGTON - 60 MILES OF RURAL PRIMARY, 18 MILES OF URBAN PRIMARY AND 5 MILES OF SECONDARY.
4/ 1987 BASE DATA FACTORED TO 1988 LEVELS (1986 BASE DATA NOT AVAILABLE).
5/ ESTIMATED BY FHWA.

ANNUAL VEHICLE-MILES OF TRAVEL AND RELATED DATA - 1988¹

BY HIGHWAY CATEGORY AND VEHICLE TYPE

OFFICE OF HIGHWAY
INFORMATION MANAGEMENT

TABLE SS88-16(VM-1)
OCTOBER 1989

YEAR	ITEM	PASSENGER VEHICLES					TRUCKS					ALL MOTOR VEHICLES
		PERSONAL PASSENGER VEHICLES			BUSES	ALL PASSENGER VEHICLES	SINGLE-UNIT			COMBI-NATION	ALL TRUCKS	
		PASSENGER CARS 2/	MOTOR-CYCLES 2/	ALL PERSONAL PASSENGER VEHICLES			2-AXLE 4-TIRE	OTHER	ALL SINGLE-UNIT			
1988	MOTOR-VEHICLE TRAVEL: (MILLIONS OF VEHICLE-MILES)											
1987	INTERSTATE RURAL	-	-	116,079	509	116,588	31,056	5,472	36,528	28,169	64,696	181,284
1988	OTHER ARTERIAL RURAL	-	-	204,932	892	205,824	75,633	10,640	86,273	19,939	106,212	312,036
1987	OTHER RURAL	-	-	197,610	869	198,479	73,862	10,305	84,167	19,343	103,510	301,989
1988	OTHER RURAL	-	-	206,068	1,700	207,768	94,579	11,944	106,523	9,946	116,469	324,237
1987	OTHER RURAL	-	-	194,582	1,657	196,239	90,818	11,569	102,387	9,342	111,729	307,968
1988	ALL RURAL	-	-	527,079	3,101	530,180	201,267	28,056	229,323	58,054	287,377	817,557
1987	ALL RURAL	-	-	501,059	3,018	504,077	193,264	27,131	220,395	55,978	276,373	780,450
1988	INTERSTATE URBAN	-	-	195,942	466	196,408	40,644	5,866	46,511	15,743	62,254	258,662
1987	INTERSTATE URBAN	-	-	183,582	453	184,015	40,398	5,669	46,067	14,754	60,821	244,836
1988	OTHER URBAN	-	-	716,297	1,898	718,196	197,511	17,309	214,820	16,351	231,171	949,367
1987	OTHER URBAN	-	-	680,215	1,847	682,062	181,787	16,737	198,524	15,332	213,866	895,916
1988	ALL URBAN 3/	-	-	912,240	2,364	914,604	238,156	23,175	261,331	32,094	293,425	1,208,029
1987	ALL URBAN 3/	-	-	863,777	2,300	866,077	222,185	22,406	244,591	30,086	274,677	1,140,754
1988	TOTAL RURAL AND URBAN	1,429,297	10,022	1,439,319	5,465	1,444,784	439,423	51,231	490,654	90,149	580,802	2,025,586
1987	TOTAL RURAL AND URBAN	1,355,330	9,506	1,364,836	5,318	1,370,154	415,449	49,537	464,986	86,064	551,050	1,921,204
1988	NUMBER OF MOTOR VEHICLES REGISTERED 4/	141,251,695	4,584,284	145,835,979	615,669	146,451,648	37,095,808	3,957,319	41,053,127	1,476,241	42,529,368	188,981,016
1987	NUMBER OF MOTOR VEHICLES REGISTERED 4/	137,208,090	4,917,131	142,125,221	602,055	142,727,276	35,841,360	3,883,694	39,725,054	1,419,400	41,144,454	183,871,730
1988	AVERAGE MILES TRAVELED PER VEHICLE	10,119	2,188	9,869	8,877	9,865	11,846	12,946	11,952	81,056	13,656	10,718
1987	AVERAGE MILES TRAVELED PER VEHICLE	9,878	1,933	9,603	8,833	9,600	11,591	12,755	11,705	60,634	13,393	10,449
1988	FUEL CONSUMED (THOUSAND GALLONS)	71,654,199	200,440	71,854,639	920,056	72,774,695	32,760,043	7,260,176	40,010,219	17,100,966	57,111,185	129,885,880
1987	FUEL CONSUMED (THOUSAND GALLONS)	70,672,638	190,120	70,762,758	902,886	71,665,644	32,265,557	7,090,683	39,356,240	16,493,469	55,849,709	127,515,353
1988	AVERAGE FUEL CONSUMPTION PER VEHICLE (GALLONS)	507	44	493	1,494	497	883	1,832	975	11,584	1,343	687
1987	AVERAGE FUEL CONSUMPTION PER VEHICLE (GALLONS)	514	39	498	1,500	502	900	1,826	991	11,620	1,357	694
1988	AVERAGE MILES TRAVELED PER GALLON OF FUEL CONSUMED	19.95	50.00	20.03	5.94	19.85	13.41	7.07	12.26	5.27	10.17	15.60
1987	AVERAGE MILES TRAVELED PER GALLON OF FUEL CONSUMED	19.20	50.00	19.29	5.89	19.12	12.88	6.99	11.81	5.22	9.87	15.07

1/ THE 50 STATES AND THE DISTRICT OF COLUMBIA REPORT TRAVEL BY HIGHWAY CATEGORY, NUMBER OF MOTOR VEHICLES REGISTERED, AND TOTAL FUEL CONSUMED. THE TRAVEL AND FUEL DATA BY VEHICLE TYPE AND STRATIFICATION OF TRUCKS, AS WELL AS RELATED DATA ARE CALCULATED BY THE FEDERAL HIGHWAY ADMINISTRATION (FHWA). ENTRIES FOR 1987 HAVE BEEN REVISED BASED ON THE AVAILABILITY OF MORE CURRENT DATA.

2/ SEPARATE ESTIMATES OF PASSENGER CAR AND MOTORCYCLE TRAVEL ARE NOT AVAILABLE BY HIGHWAY CATEGORY.

3/ URBAN CONSISTS OF TRAVEL ON ALL ROADS AND STREETS IN URBAN PLACES

OF 5,000 OR GREATER POPULATION.

4/ STRATIFICATION OF THE TRUCK FIGURES IS MADE BY FHWA BASED ON THE 1982 CENSUS OF TRANSPORTATION TRUCK INVENTORY AND USE SURVEY (TIUS). THE COMBINATIONS REPRESENT APPROXIMATELY THE NUMBER OF TRUCK-TRACTORS WITH SEMI-TRAILER(S) AND A MAJORITY OF THE HEAVY SINGLE-UNIT TRUCKS USED REGULARLY IN COMBINATION WITH FULL TRAILER(S). ALL THESE TRUCK VEHICLE FIGURES MAY BE REGARDED AS PRELIMINARY AND MAY BE REVISED PENDING FURTHER ANALYSIS OF THE TIUS DATA.

ANNUAL VEHICLE-MILES OF TRAVEL - 1988¹

BY STATE AND FUNCTIONAL SYSTEM

TABLE SS88-17(VM-2)
SEPTEMBER 1989

OFFICE OF HIGHWAY
INFORMATION MANAGEMENT

(MILLIONS)

STATE	RURAL							URBAN							TOTAL
	INTERSTATE	OTHER PRINCIPAL ARTERIAL	MINOR ARTERIAL	MAJOR COLLECTOR	MINOR COLLECTOR	LOCAL	TOTAL	INTERSTATE	OTHER FREEWAYS AND EXPRESSWAYS	OTHER PRINCIPAL ARTERIAL	MINOR ARTERIAL	COLLECTOR	LOCAL	TOTAL	
ALABAMA	3,951	4,302	3,675	4,305	1,148	3,556	20,937	3,321	-	5,605	3,585	1,814	4,422	18,747	39,684
ALASKA 2/	555	7	417	491	133	388	2,091	384	56	312	262	267	469	1,750	3,841
ARIZONA 3/	4,449	1,652	2,234	2,830	292	2,191	13,648	2,191	490	8,064	5,020	1,259	3,575	20,599	34,247
ARKANSAS	2,425	2,768	2,489	3,108	395	1,051	12,236	1,522	592	2,320	1,415	512	622	6,983	19,219
CALIFORNIA	12,530	12,451	8,863	10,639	3,159	3,434	51,076	47,821	36,798	51,739	31,095	11,102	11,944	190,499	241,575
COLORADO	3,082	2,341	1,606	2,200	908	820	10,957	3,328	1,628	5,058	2,195	993	3,506	16,708	27,665
CONNECTICUT	1,369	1,122	1,171	1,468	474	944	6,548	6,381	2,331	3,796	2,905	2,369	1,732	19,514	26,062
DELAWARE	-	1,127	619	628	69	461	2,904	902	-	1,268	475	346	509	3,500	6,404
DIST. OF COL.	-	-	-	-	-	-	-	429	453	1,113	738	333	339	3,405	3,405
FLORIDA 3/	7,836	8,586	5,718	2,965	1,481	2,903	29,489	9,391	4,383	18,418	13,921	9,111	20,606	75,830	105,319
GEORGIA	7,954	4,682	6,595	5,734	920	3,441	29,327	9,092	1,311	7,985	6,527	2,298	5,722	32,935	62,262
HAWAII	82	85	1,005	518	110	530	2,330	1,176	886	834	613	443	1,137	5,089	7,419
IDAHO	1,381	1,425	499	1,251	206	840	5,602	468	-	802	756	324	175	2,525	8,127
ILLINOIS	6,866	476	8,589	4,925	448	3,334	24,638	12,149	546	13,453	14,195	6,509	6,993	53,845	78,483
INDIANA 3/	5,511	3,967	5,126	10,360	1,635	1,913	28,512	4,479	852	6,908	5,338	1,603	3,432	22,612	51,124
IOWA	3,119	3,488	2,817	2,370	714	1,492	14,000	1,251	-	2,948	1,874	686	1,148	7,907	21,907
KANSAS	2,285	3,590	1,963	2,645	276	1,237	11,996	1,820	609	2,480	2,061	660	1,535	9,165	21,161
KENTUCKY	4,271	3,399	2,187	4,899	1,874	1,942	18,571	3,230	505	2,838	3,361	1,325	1,784	13,043	31,614
LOUISIANA 2/	4,061	2,379	2,346	4,876	1,371	2,153	17,186	3,142	707	4,394	3,379	1,289	4,585	17,496	34,682
MAINE	1,602	1,498	1,599	1,991	684	964	8,338	473	118	1,077	766	401	228	3,063	11,401
MARYLAND 3/	2,571	3,289	2,950	2,136	748	1,071	12,765	7,301	2,587	7,566	3,658	1,919	1,702	24,733	37,498
MASSACHUSETTS 3/	2,127	1,407	1,788	1,857	391	462	7,832	10,665	4,452	9,577	5,164	2,832	2,812	35,502	43,334
MICHIGAN	5,392	5,840	5,595	9,896	1,509	2,535	30,767	10,495	3,399	14,151	11,298	3,841	3,948	47,132	77,899
MINNESOTA	2,556	4,301	3,138	3,602	1,068	2,459	17,124	4,441	1,916	2,791	5,030	2,503	2,652	19,323	36,447
MISSISSIPPI	2,443	2,783	3,151	3,417	333	2,710	14,837	3,113	86	2,520	1,198	694	1,595	7,206	22,043
MISSOURI	4,689	5,408	3,238	4,996	359	3,195	21,885	7,707	2,014	6,612	4,369	1,741	1,242	23,695	45,570
MONTANA	1,651	1,442	957	915	341	789	6,095	153	-	656	384	170	660	2,043	6,138
NEBRASKA	1,751	2,183	1,813	1,235	277	1,224	8,483	583	64	1,896	1,262	468	651	4,924	13,407
NEVADA	1,421	780	505	725	157	300	3,888	798	306	1,498	1,360	544	595	5,101	8,989
NEW HAMPSHIRE	1,277	1,050	1,421	1,188	382	542	5,860	622	480	1,031	956	319	259	3,647	9,507
NEW JERSEY 3/	1,848	1,942	2,283	3,027	869	867	10,836	8,548	5,200	10,864	9,199	3,261	10,763	47,835	58,671
NEW MEXICO	3,085	1,261	1,483	1,222	185	2,076	9,312	1,019	-	2,725	1,092	456	679	5,971	15,283
NEW YORK 3/	5,323	4,208	6,465	5,232	5,586	3,343	30,157	13,235	12,473	16,851	17,162	5,663	8,151	73,535	103,692
NORTH CAROLINA	5,221	5,511	3,227	10,273	3,387	4,190	31,809	2,693	2,011	8,447	5,001	1,074	6,768	26,134	57,943
NORTH DAKOTA	842	765	944	808	185	580	4,224	152	-	535	377	182	295	1,541	5,765
OHIO	7,650	4,557	5,335	8,376	2,218	6,987	35,023	13,971	2,883	9,499	6,524	3,689	10,401	46,967	81,990
OKLAHOMA	3,615	2,899	3,000	4,741	153	1,796	16,204	3,050	1,773	3,344	3,948	965	3,104	16,184	32,388
OREGON	3,248	3,823	1,949	2,765	607	1,446	13,838	2,578	855	3,003	2,473	1,411	1,046	11,366	25,204
PENNSYLVANIA	7,244	6,819	8,774	5,773	2,604	5,514	36,728	6,424	3,523	17,262	7,704	4,402	5,195	44,510	81,238
RHODE ISLAND 3/	199	220	167	163	51	105	905	988	595	1,289	1,231	355	510	4,948	5,853
SOUTH CAROLINA	5,217	3,599	4,450	4,419	609	2,075	20,369	1,978	395	4,376	2,756	1,300	645	11,390	31,759
SOUTH DAKOTA	1,275	1,331	828	914	161	590	5,099	204	20	608	323	127	253	1,535	6,634
TENNESSEE	6,227	2,581	5,850	3,027	2,200	1,561	21,446	5,259	13	8,534	3,510	2,279	3,165	22,747	44,193
TEXAS 3/	10,992	15,291	6,342	14,639	2,201	4,279	53,714	21,276	13,225	19,606	15,320	7,943	25,374	102,744	156,458
UTAH	1,921	899	757	762	216	516	5,071	2,343	122	1,512	1,748	918	1,549	8,192	13,263
VERMONT 3/	1,000	612	911	1,083	194	478	4,278	131	55	412	281	134	262	1,275	5,553
VIRGINIA	6,516	5,110	5,447	5,924	460	3,125	26,584	7,558	1,962	7,650	6,608	2,089	5,002	30,869	57,453
WASHINGTON 3/	3,311	2,821	2,112	4,415	1,564	1,070	15,293	6,808	2,268	6,908	5,228	2,391	2,917	26,520	41,813
WEST VIRGINIA 3/	2,324	1,408	2,080	3,111	317	756	9,996	966	371	969	819	454	309	3,888	13,884
WISCONSIN	3,504	6,110	4,410	4,396	948	3,050	22,418	2,366	1,736	4,714	5,026	1,256	4,942	20,040	42,458
WYOMING	1,543	658	894	468	408	360	4,331	147	9	498	296	221	156	1,327	5,658
TOTAL	181,284	160,253	151,783	183,507	46,985	93,745	817,557	258,662	116,965	319,286	231,786	99,245	182,085	1,208,029	2,025,586
PERCENT - AREA	22.2	19.7	18.6	22.5	5.8	11.5	100.0	21.5	9.7	26.5	19.2	8.3	15.1	100.0	0.0
PERCENT - TOTAL	9.0	8.0	7.5	9.1	2.4	4.7	40.4	12.8	5.6	15.8	11.5	4.9	9.0	59.7	100.0

1/ DATA ARE BASED ON STATE HIGHWAY AGENCY ESTIMATES REPORTED FOR THE VARIOUS FUNCTIONAL SYSTEMS.
2/ FEDERAL HIGHWAY ADMINISTRATION ESTIMATES WERE MADE FOR SOME HIGHWAY

SYSTEMS.
3/ STATE HIGHWAY AGENCY ESTIMATE SUBJECT TO REVISION PENDING FURTHER FEDERAL HIGHWAY ADMINISTRATION REVIEW.

1988 RELATIONSHIPS - POPULATION, DRIVERS, VEHICLES, FUEL, AND TRAVEL¹

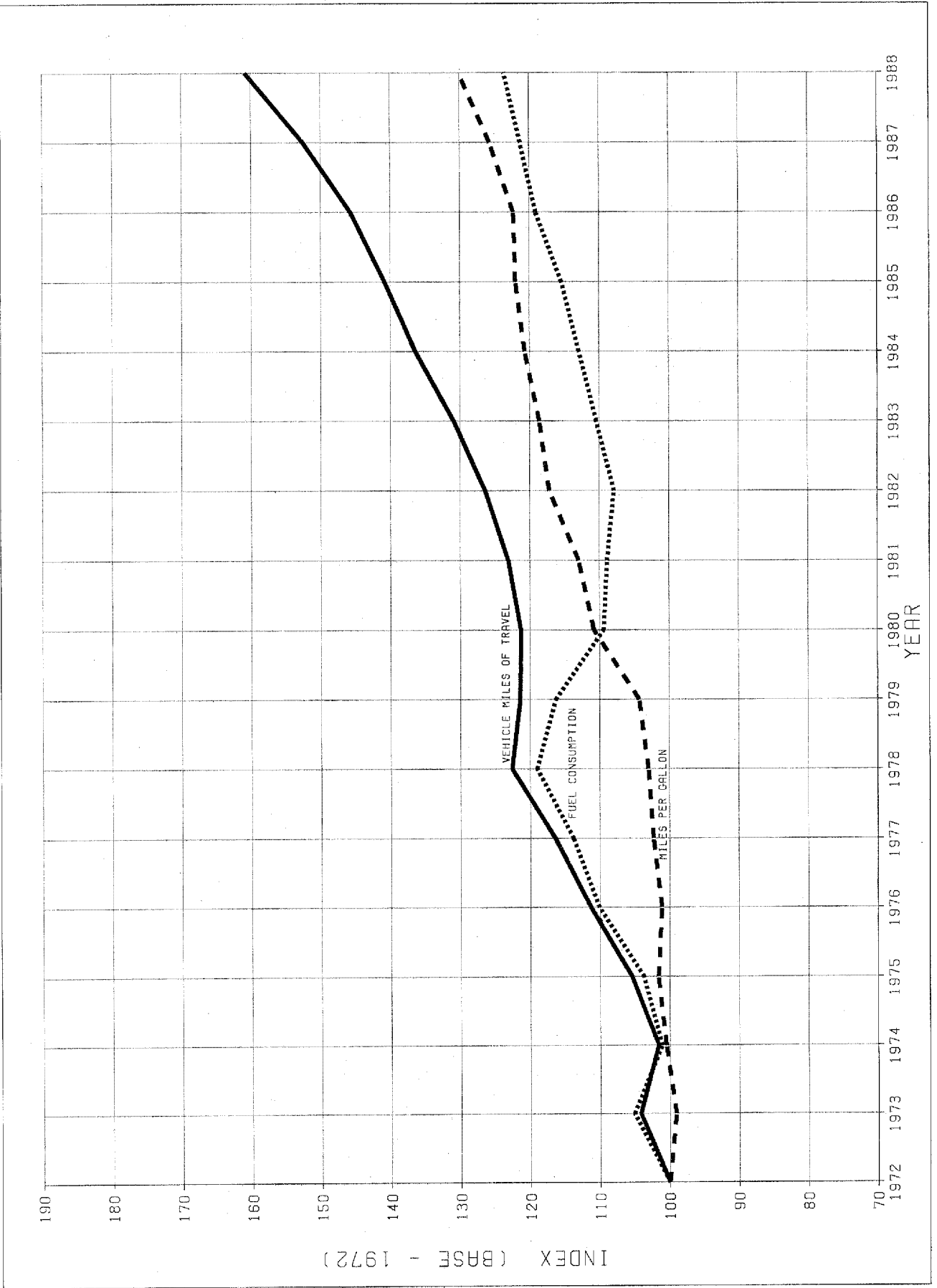
TABLE SS88-18
OCTOBER 1989

STATE	RESIDENT POPULATION (1,000)	LICENSED DRIVERS PER 1,000 RESIDENT POPULATION	REGISTERED MOTOR VEHICLES PER 1,000 RESIDENT POPULATION	LICENSED DRIVERS PER REGISTERED MOTOR VEHICLE	PERSONS PER REGISTERED MOTOR VEHICLE	GALLONS OF FUEL PER VEHICLE	MILES PER GALLON	ANNUAL MILES PER VEHICLE	VEHICLE MILES PER CAPITA	VEHICLE MILES PER LICENSED DRIVER	STATE
ALABAMA	4,102	511	946								ALABAMA
ALASKA	524	573	691	0.54	1.06	635	16.10	10,225	9,674	18,919	ALASKA
ARIZONA	3,489	674	775	0.83	1.45	699	15.17	10,614	7,330	12,803	ARIZONA
ARKANSAS	2,395	700	596	0.87	1.29	728	17.39	12,661	9,816	14,561	ARKANSAS
				1.16	1.68	1,122	12.01	13,466	8,025	11,461	
CALIFORNIA	28,314	668	754	0.89	1.33	672	16.85	11,322	8,532	12,764	CALIFORNIA
COLORADO	3,301	674	686	0.76	1.13	681	16.29	9,453	8,381	12,427	COLORADO
CONNECTICUT	3,233	733	820	0.89	1.22	591	16.63	9,828	8,061	10,997	CONNECTICUT
DELAWARE	660	710	776	0.92	1.29	763	16.41	12,509	9,703	13,659	DELAWARE
DIST. OF COL.	617	635	428	1.48	2.34	771	16.72	12,897	5,519	8,691	DIST. OF COL.
FLORIDA	12,335	713	890	0.80	1.12	595	16.13	9,589	8,538	11,982	FLORIDA
GEORGIA	6,342	684	819	0.83	1.22	323	14.56	11,962	9,817	14,361	GEORGIA
HAWAII	1,098	578	642	0.90	1.56	528	19.95	10,528	6,757	11,686	HAWAII
IDAHO	1,003	705	937	0.75	1.07	572	15.12	8,644	8,103	11,486	IDAHO
ILLINOIS	11,614	625	677	0.92	1.48	710	14.05	9,979	6,758	10,807	ILLINOIS
INDIANA	5,556	679	750	0.90	1.33	787	15.57	12,262	9,202	13,550	INDIANA
IOWA	2,834	666	906	0.73	1.10	634	13.46	8,532	7,730	11,610	IOWA
KANSAS	2,495	684	886	0.77	1.13	704	13.59	9,575	8,481	12,405	KANSAS
KENTUCKY	3,727	635	750	0.85	1.33	830	13.63	11,311	8,482	13,353	KENTUCKY
LOUISIANA	4,408	589	666	0.88	1.50	798	14.79	11,806	7,868	13,350	LOUISIANA
MAINE	1,205	719	781	0.92	1.28	786	15.41	12,112	9,461	13,154	MAINE
MARYLAND	4,622	679	750	0.90	1.33	676	16.00	10,812	8,113	11,954	MARYLAND
MASSACHUSETTS	5,883	722	648	1.11	1.54	718	15.80	11,349	7,358	10,197	MASSACHUSETTS
MICHIGAN	9,240	691	773	0.89	1.29	662	16.47	10,908	8,431	12,194	MICHIGAN
MINNESOTA	4,307	576	745	0.77	1.34	710	15.99	11,353	8,462	14,703	MINNESOTA
MISSISSIPPI	2,620	692	682	1.01	1.47	850	14.51	12,336	8,413	12,155	MISSISSIPPI
MISSOURI	5,141	683	736	0.93	1.35	848	14.16	12,010	8,864	12,977	MISSOURI
MONTANA	805	664	895	0.74	1.11	733	15.37	11,263	10,109	15,227	MONTANA
NEBRASKA	1,602	679	829	0.82	1.21	705	14.32	10,094	8,369	12,321	NEBRASKA
NEVADA	1,054	711	767	0.93	1.30	866	12.84	11,121	8,528	12,001	NEVADA
NEW HAMPSHIRE	1,085	736	855	0.86	1.17	614	16.68	10,243	7,890	11,909	NEW HAMPSHIRE
NEW JERSEY	7,721	706	743	0.95	1.36	674	15.17	10,225	7,599	10,762	NEW JERSEY
NEW MEXICO	1,507	695	840	0.83	1.19	792	15.24	12,067	10,141	14,593	NEW MEXICO
NEW YORK	17,909	566	549	1.03	1.82	629	16.75	10,540	5,790	10,223	NEW YORK
NORTH CAROLINA	6,489	681	774	0.88	1.29	768	15.01	11,536	8,929	13,104	NORTH CAROLINA
NORTH DAKOTA	567	647	982	0.66	1.02	630	13.97	8,800	8,543	13,365	NORTH DAKOTA
OHIO	10,855	680	793	0.86	1.26	653	14.58	9,520	7,553	11,112	OHIO
OKLAHOMA	3,242	685	768	0.87	1.27	770	16.46	12,681	9,990	14,594	OKLAHOMA
OREGON	2,767	784	837	0.94	1.19	701	15.53	10,884	9,109	11,614	OREGON
PENNSYLVANIA	12,001	644	647	1.00	1.55	712	14.70	10,461	8,769	10,507	PENNSYLVANIA
RHODE ISLAND	993	671	676	0.99	1.48	633	13.75	8,725	5,094	8,785	RHODE ISLAND
SOUTH CAROLINA	3,470	664	696	0.96	1.44	753	17.48	13,157	9,152	13,775	SOUTH CAROLINA
SOUTH DAKOTA	713	677	971	0.70	1.03	654	14.63	9,578	9,304	13,747	SOUTH DAKOTA
TENNESSEE	4,895	654	863	0.76	1.16	716	14.62	10,459	9,028	13,815	TENNESSEE
TEXAS	16,841	658	737	0.89	1.36	792	15.92	12,611	9,290	14,120	TEXAS
UTAH	1,690	578	686	0.84	1.46	778	14.71	11,439	7,848	13,566	UTAH
VERMONT	557	729	813	0.90	1.23	716	17.12	12,262	9,969	13,671	VERMONT
VIRGINIA	6,015	687	776	0.88	1.29	751	16.37	12,302	9,552	13,913	VIRGINIA
WASHINGTON	4,648	666	636	0.82	1.20	625	17.20	10,756	8,996	13,075	WASHINGTON
WEST VIRGINIA	1,876	697	666	1.02	1.46	775	13.93	10,791	7,401	10,613	WEST VIRGINIA
WISCONSIN	4,855	673	804	0.84	1.24	625	17.43	10,884	8,745	12,991	WISCONSIN
WYOMING	479	726	1,006	0.72	0.99	921	12.75	11,739	11,812	16,215	WYOMING
TOTAL	245,807	663	750	0.88	1.33	704	15.60	10,985	8,241	12,438	TOTAL

1/ VEHICLE RELATIONSHIPS EXCLUDE MOTORCYCLES.

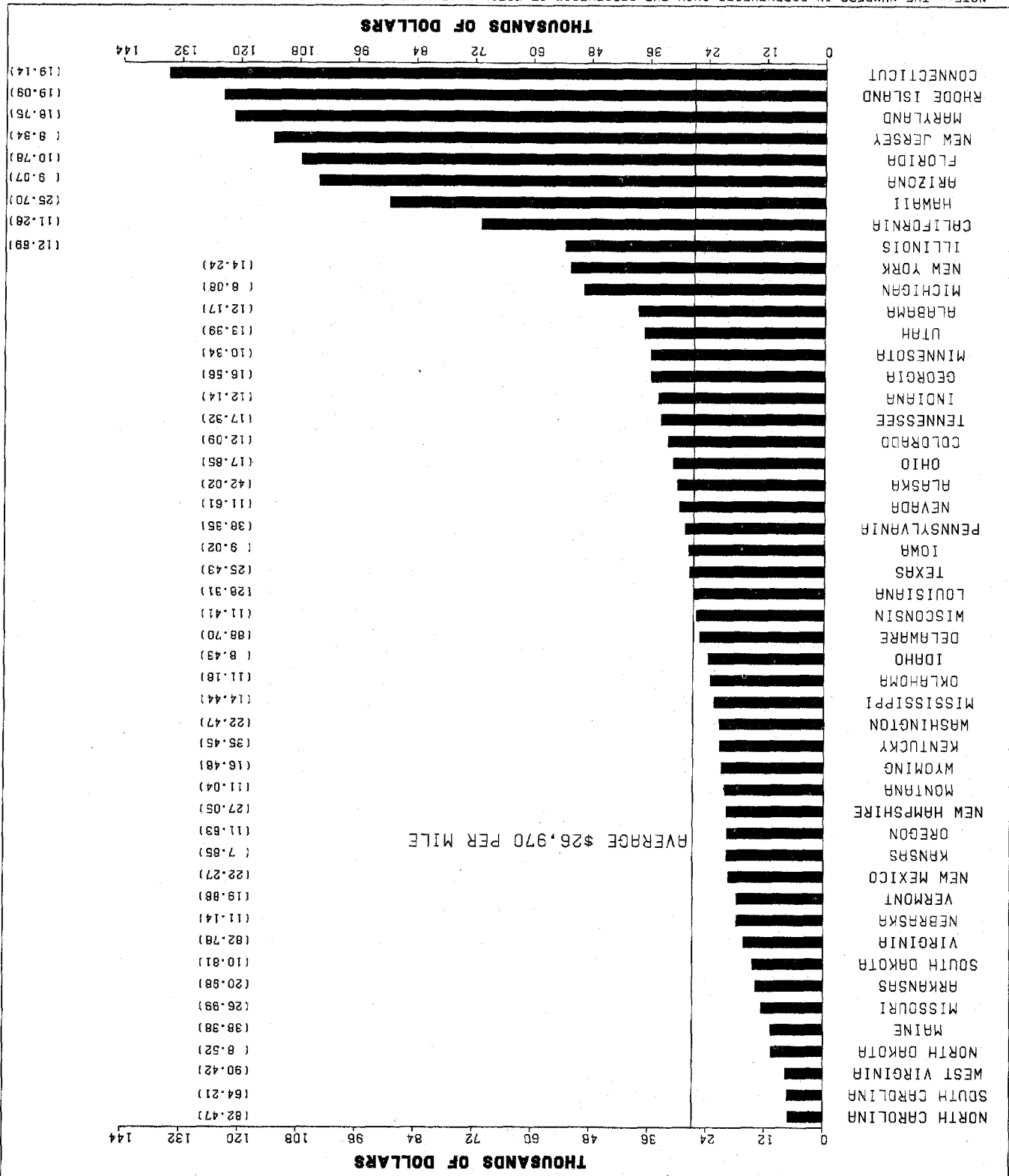
HIGHWAY TRAVEL AND FUEL CONSUMPTION

FIGURE 12



STATE CAPITAL OUTLAY PER MILE ON STATE-ADMINISTERED ROADS AND STREETS 1988 (EXCLUDING TOLL FACILITIES)

FIGURE 13

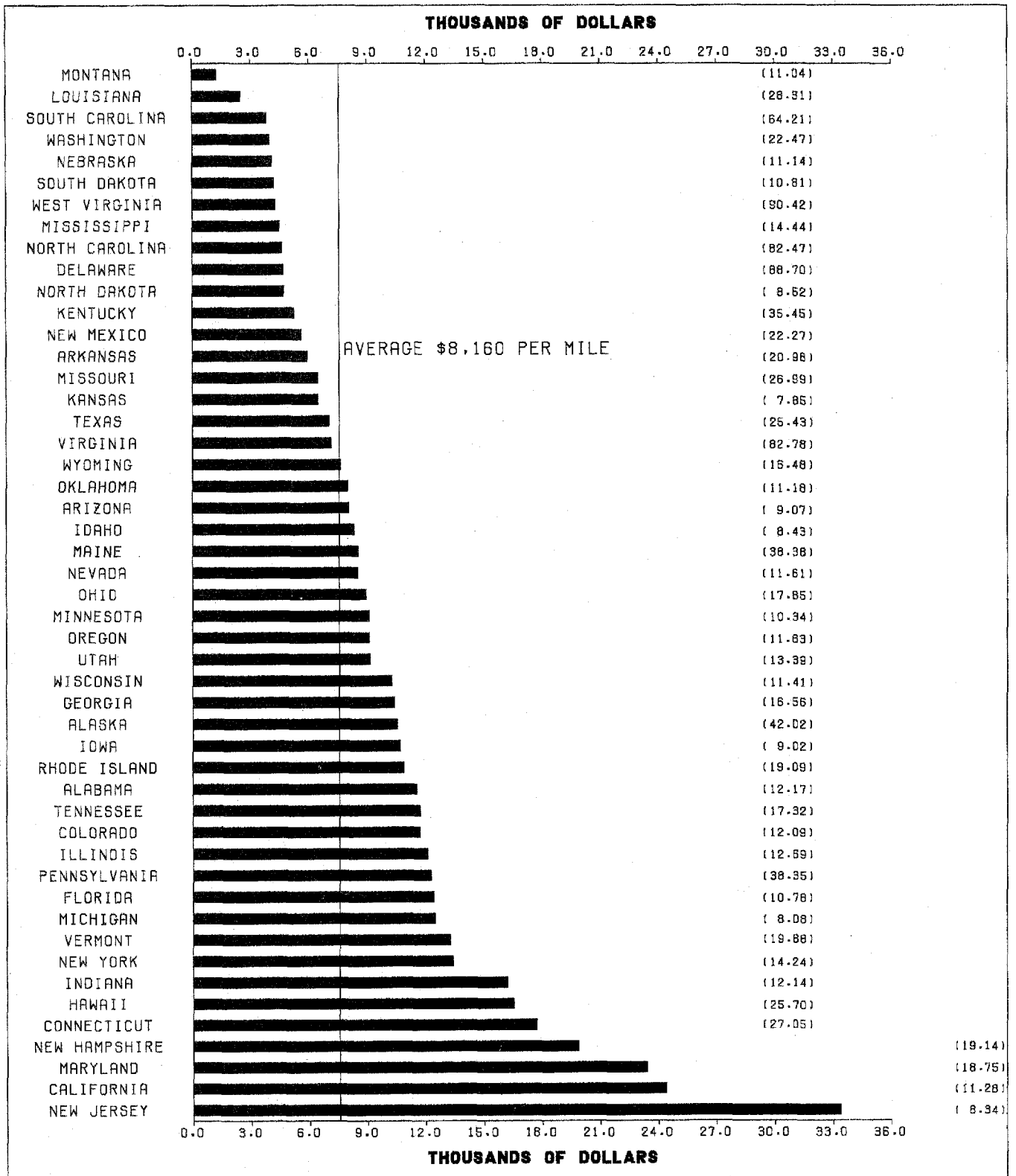


NOTE: THE NUMBERS IN PARENTHESES SHOW THE PERCENTAGE OF TOTAL MILEAGE UNDER STATE JURISDICTION. 1988 STATE HIGHWAY FINANCE DATA NOT REPORTED FOR MASSACHUSETTS.

STATE EXPENDITURES PER MILE FOR MAINTENANCE ON STATE-ADMINISTERED ROADS AND STREETS 1988

(EXCLUDING TOLL FACILITIES)

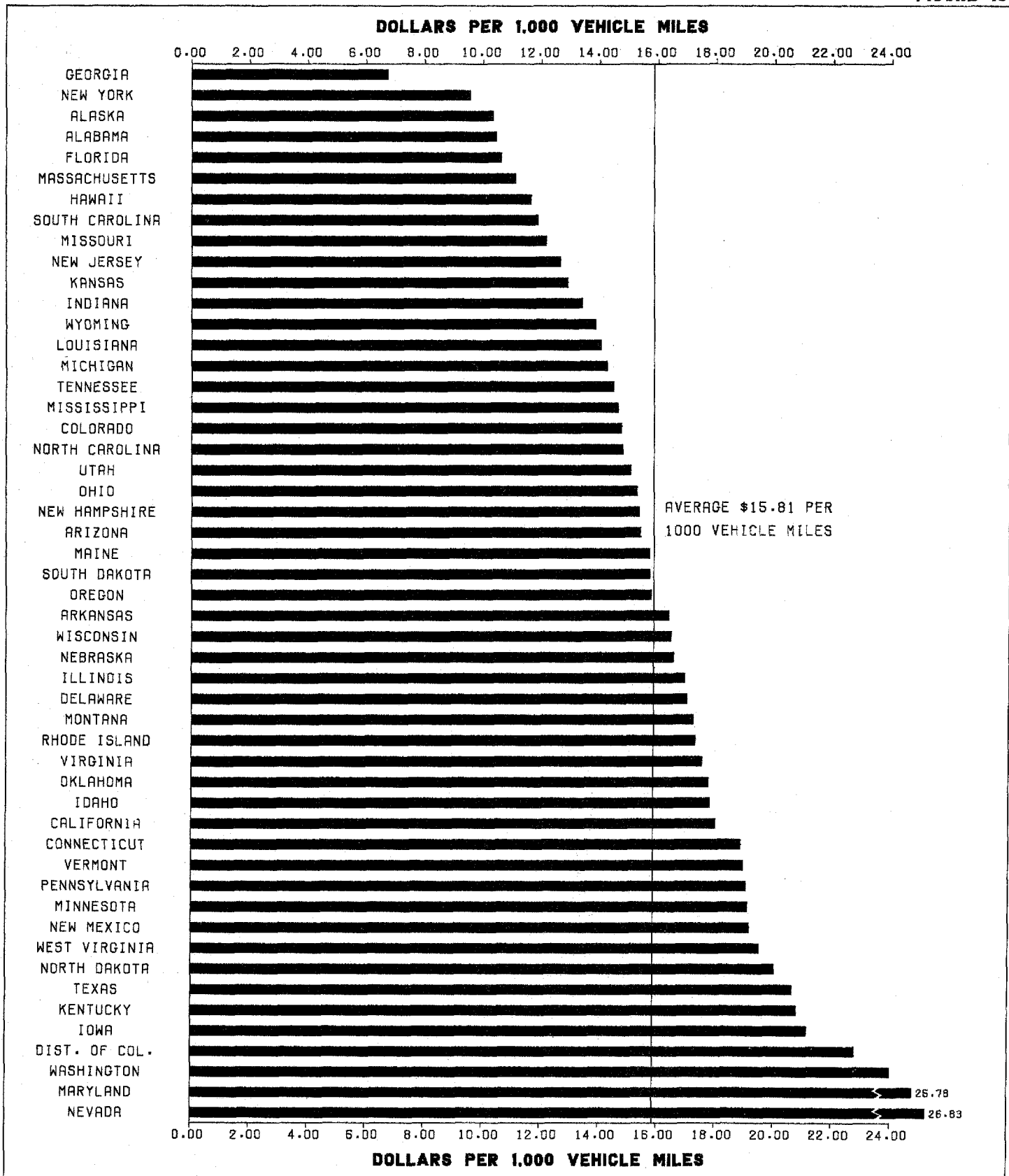
FIGURE 14



NOTE: THE NUMBERS IN PARENTHESES SHOW THE PERCENTAGE OF TOTAL MILEAGE UNDER STATE JURISDICTION.
1988 STATE HIGHWAY FINANCE DATA NOT REPORTED FOR MASSACHUSETTS.

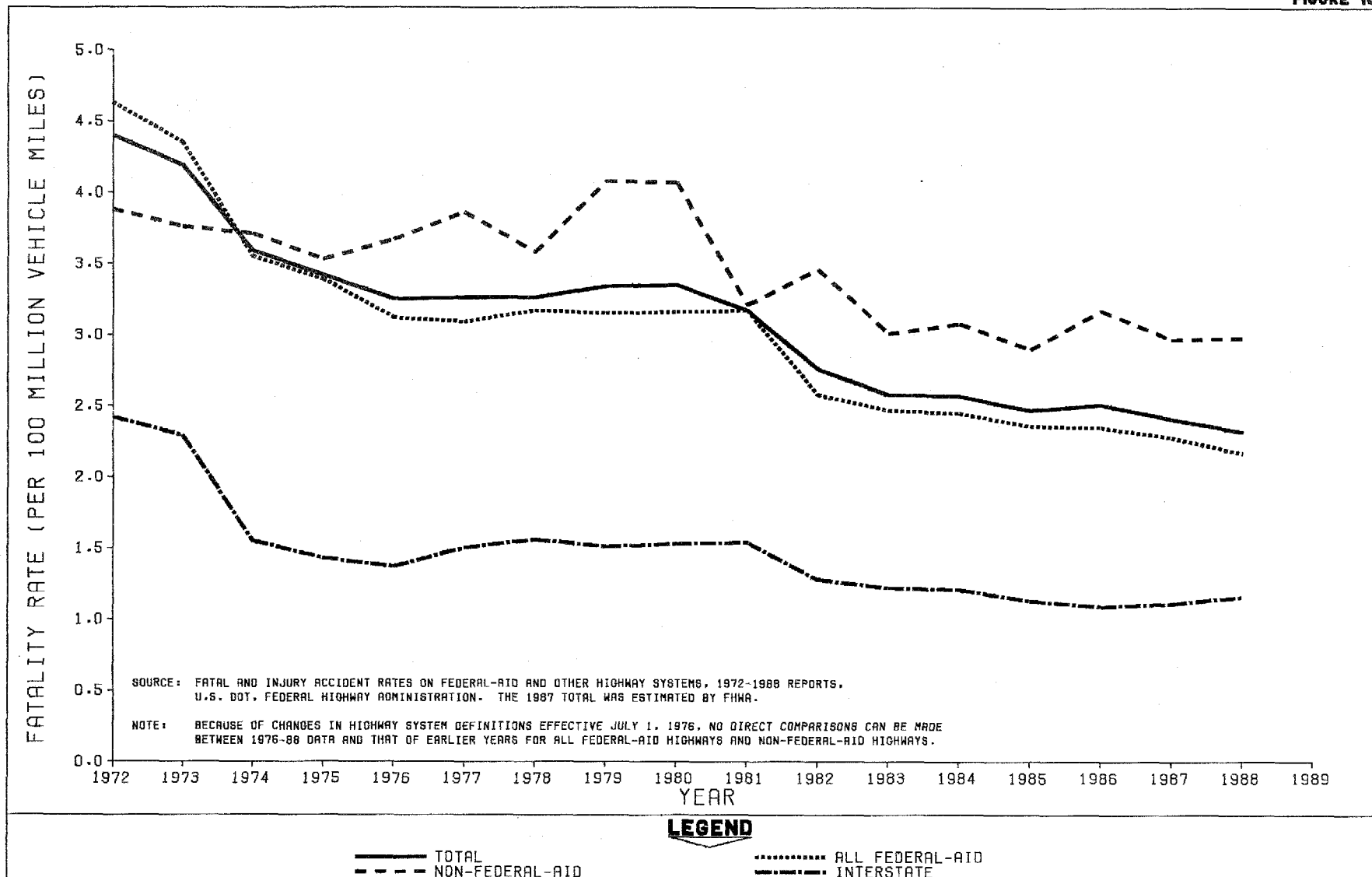
STATE HIGHWAY-USER REVENUE PER VEHICLE MILE OF TRAVEL 1988

FIGURE 15



FATALITY RATES FEDERAL-AID AND NON-FEDERAL-AID HIGHWAYS 1972 - 1988

FIGURE 16



FEDERAL HIGHWAY-USER FEES ^{1/}

Table SS88-19
October 1989

USER FEE TYPE	RATE ON OCTOBER 1, 1989
Gasoline	9¢/gallon
Gasohol	3¢/gallon
Diesel	15¢/gallon
Other Special Fuels	9¢/gallon
Tires	0-40 lbs., no tax. Over 40-70 lbs., 15¢/lb. in excess of 40 lbs. Over 70-90 lbs., \$4.50 + 30¢/lb. in excess of 70 lbs. Over 90 lbs., \$10.50 + 50¢/lb. in excess of 90 lbs.
Truck and Trailer Sales	12% of retailer's sales price for trucks over 33,000 lbs. gross vehicle weight (gvw) and trailers over 26,000 lbs. gvw.
Heavy Vehicle Use	Annual tax: Trucks 55,000 lbs. gvw to 75,000 lbs. gvw, \$100 plus \$22 for each 1,000 lbs. (or fraction thereof) in excess of 55,000 lbs. Trucks over 75,000 lbs. gvw, \$550.

^{1/} See Table FE-101, "Highway Statistics 1988," for a more complete description of Federal highway-user fees. Fees do not include the 0.1 cent per gallon tax on motor fuel dedicated to the Leaking Underground Storage Tank Trust Fund.

TABLE OF CONTENTS

INTRODUCTION	Selected Highway Statistics and Charts	2
MOTOR FUEL	Highway Use of Motor Fuel in the United States	3
	Motor-Fuel Use	4
	State Motor-Fuel Receipts	5
	Gasohol as a Percent of Highway Use of Gasoline	6
MOTOR VEHICLE	Total Motor-Vehicle Registrations	7
	Motor-Vehicle Registrations	8
	State Motor-Vehicle and Motor-Carrier Revenues	9
DRIVER LICENSE	Licensed Drivers, by Sex	10
	Driver Licenses in Force	11
	Licensed Drivers, by Age	12
FEDERAL TAXES	Net Revenues to the Highway Trust Fund	13
	Status of the Federal Highway Trust Fund	14
	Federal Highway Trust Fund	15
	Apportionment of Federal-Aid Highway Funds	16
HIGHWAY FINANCE	Total Receipts for Highways, by Governmental Units	18
	Total Disbursements for Highways, by Function	18
	Total Receipts and Disbursements for Highways	19
	State Receipts and Disbursements for Highways	19
	Highway Price Trends and Consumer Price Index	20
	Highway Expenditures, by All Units of Government	20
	Total State Highway-User Revenue	21
	Disposition of Receipts from State Imposts on Highway Users	22
	State Highway Capital Outlay and Maintenance	23
ROADWAY	Total Road and Street Mileage in the United States, by Surface Type	24
	Public Road and Street Mileage, by Functional System	25
	Public Road and Street Mileage, by Federal-Aid System	26
VEHICLE-MILES	Annual Vehicle-Miles of Travel and Related Data	27
	Annual Vehicle-Miles of Travel, by State and Functional System	28
MISCELLANEOUS	Relationships - Population, Drivers, Vehicles, Fuel, and Travel	29
	Highway Travel and Fuel Consumption	30
	State Capital Outlay per Mile	31
	State Expenditures per Mile for Maintenance	32
	State Highway-User Revenue per Vehicle-Mile of Travel	33
	Fatality Rates	34
	Federal Highway-User Fees	35