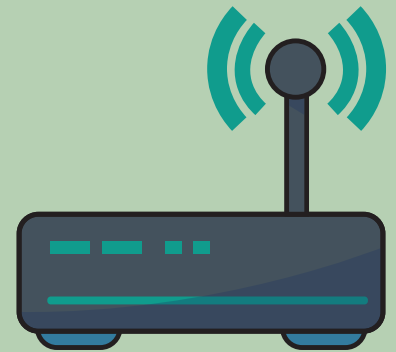


# Secure Your Home Wi-Fi

[security.berkeley.edu/education-awareness/securing-home-wi-fi](https://security.berkeley.edu/education-awareness/securing-home-wi-fi)

## Secure Your Router

First, find your router's IP address (e.g., 192.128.1.1) & type it into an address bar (aka URL bar). Then, change the Admin/Default password. Most companies use the same default username and password into every device they sell. Be sure to change it!



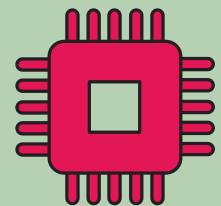
## Create a Network Password

\* \* \* \* \*

Create a strong, unique password for your Wi-Fi network too (and make sure it's different from your router admin password).

## Keep the Firmware Updated

Turn on automatic updates for your router's firmware. And if your router is no longer supported by the manufacturer, buy a new one!



## Set up a Guest Network

Setting up a "guest" network means splitting it so devices on your guest network cannot see or talk with any device on your main network.

