

Welcome to the webinar:

Making public finance management work for social protection. Lessons learned from Nepal and Senegal



**Social Protection
& Public Finance Management**



This project is funded by the European Union



unicef
for every child



Global Coalition for
SOCIAL PROTECTION FLOORS




Making public finance management work for social protection. Lessons learned from Nepal and Senegal


Agenda:

SECTION	SPEAKERS	TIME
Welcoming remarks	Doerte Bosse	5 minutes
The SP&PFM approach on improving the linkages between social protection and PFM for achieving universal and sustainable social protection	Tomoo Okubo	5 minutes
	Céline Peyron Bista	5 minutes
Diagnostic towards the identification of sustainable financing options for social protection- example through the ISPA tools in Senegal	Alix Machiels	15 minutes
Financing Social Protection in Nepal - lessons and way forward	Usha Mishra Hayes	15 minutes
Engaging the social partners and civil society organizations in the social protection budgeting and financing	Bart Verstraeten	15 minutes
	Uzziel Twagilimana	
Learning together. Questions and answers from participants	Moderated by Céline Peyron Bista	40 minutes
Next steps and closing remarks	Aristide Kielem	2 minutes

Share your questions to the speakers!

 *type them in the **Q&A** box*

Please state your name/organization, and if your question is directed to a specific speaker.

 Also, you are invited to interact with us on Twitter using
#SPorgWebinar #USP2030
#SPPFM

Moderator

Aristide Kielem

Social Policy Specialist, UNICEF

Aristide Kielem is a Social Protection and PFM specialist working for UNICEF headquarters in New York. He is coordinating the SP&PFM Programme for UNICEF. Prior to his current position, he was a Senior Advisor on Programmes and Budgetary Studies at the Treasury Board Secretariat of Quebec, Canada. He has over 10 years' experience in social protection, public finance management, poverty analysis and strategic planning in both development and humanitarian settings with UNDP and UNICEF. Aristide Graduated in Development Economics and Project Analysis and holds a MPA degree in Programme Evaluation.



Speaker

Doerte Bosse

Head of Sector for Horizontal Coordination, Social Protection and Disabilities, EU DG INTPA

Ms Bosse has worked for over 20 years in Development Policy and International Cooperation. Currently, she is the Head of Sector for horizontal coordination, social protection and disabilities in INTPA Headquarters. Previously she led various teams in INTPA Headquarters and in Delegations covering Human Development, Communication & Visibility and Finance & Contracts. Before joining the EC, she was a speechwriter and worked in the Latin American Department of the German Ministry of Economic Cooperation and Development. Ms Bosse holds a Master's degree in Business administration from the Free University of Berlin, a Degree in Arts and Humanities from the Universidad Complutense of Madrid and a Postgraduate degree from the German Institute for Development.



Speaker

Tomoo Okubo

Social Policy Specialist, UNICEF

Tomoo Okubo is a Policy Specialist on Social Protection at UNICEF New York, leading on UNICEF's engagement in building social protection systems. Prior to its current position, he has worked for more than 8 years in different settings, including in Mozambique, Nepal, Sierra Leone and Thailand on social protection and child poverty, with focus on children and families. He holds Master's degree in Public Administration/International Development from Harvard Kennedy School.



Speaker

Céline Peyron Bista

SP&PFM Chief Technical Adviser, ILO

Ms Celine Peyron Bista is the Chief Technical Advisor of an EU funded Programme on social protection and public finance management for the ILO. She has over 20 years of professional experience in the field of social security and social protection, mainly with the ILO, but also the Asian Development Bank and NGOs. Among other topics, she has a specialization on unemployment protection. She worked and lived in Latin America, Asia and Africa.



Making PFM work for social protection



25 November 2021



This project is funded by
the European Union



International
Labour
Organization



Global Coalition for
SOCIAL PROTECTION FLOORS

What do we know

- **Social protection:** a human right, an economic necessity, a smart investment, catalyst for many SDGs
- **4 billion people** live without any social protection, particularly the most vulnerable
- **Faced with vulnerabilities**, including COVID-19, conflicts and climate change
- **Human-centered** recovery from COVID-19



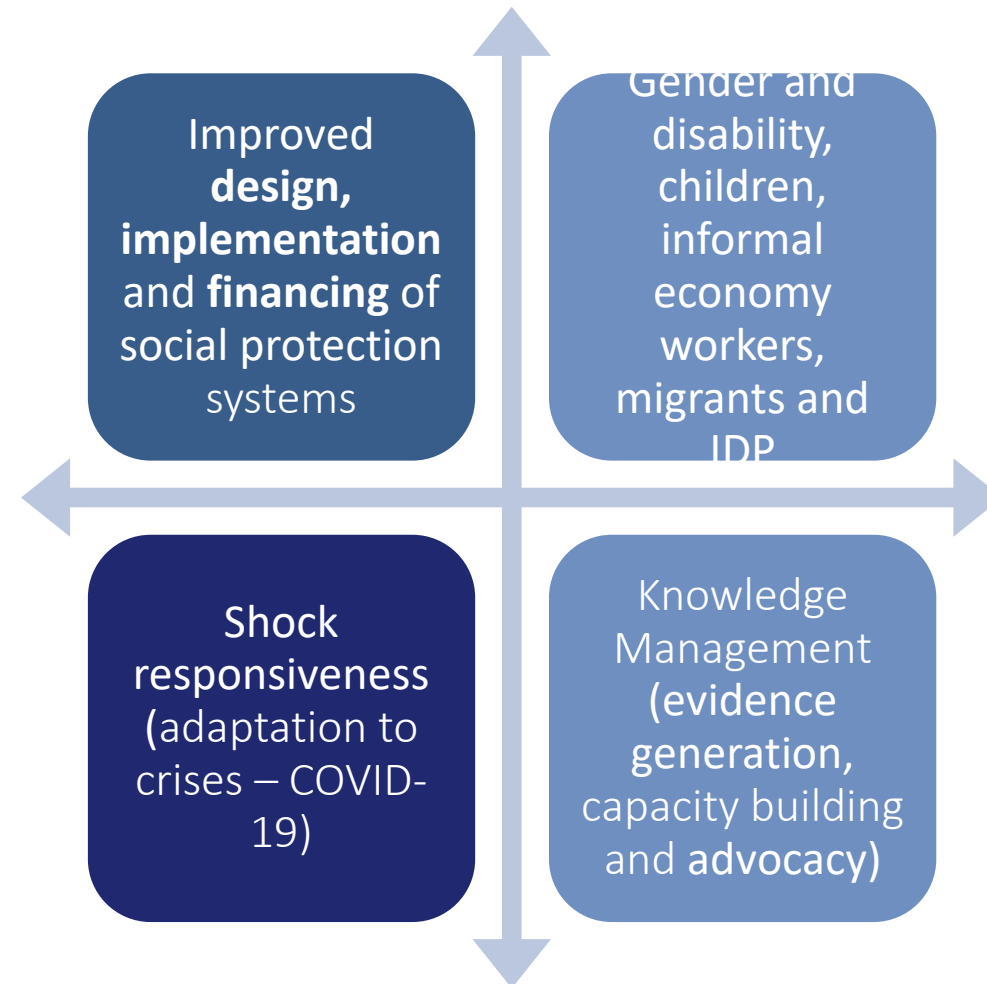
Shared Vision

- **Rights-based** approach, following international principles
- **Achieve Universal Social Protection**, with focus on leaving no one behind & life-cycle approach
- Take **systems approach** and ensure **sustainability**
- Making systems **adaptive to respond to shocks**
- Closing the SP gaps is not feasible without **increased investment**
- **Public Finance Management** is a key to achieve the vision



Key features of the programme

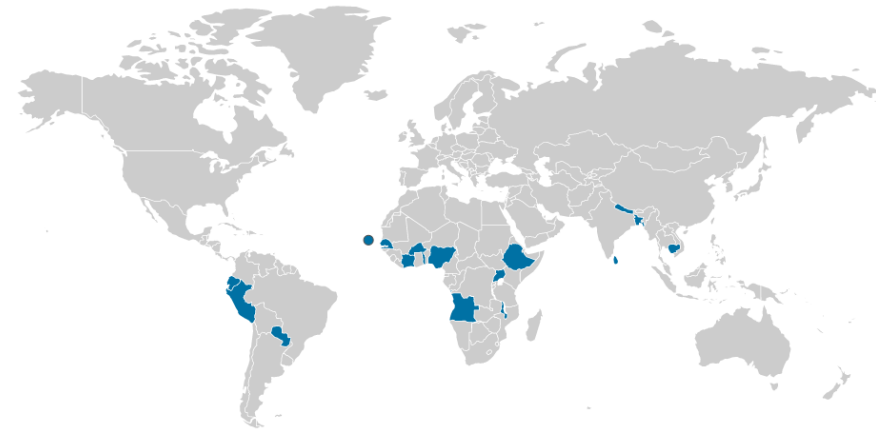
- **Joint initiative** by EU, ILO, UNICEF and GCSPF
- **Global**, multi-country programme
- Broad **national dialogue**
- Contributing to generating **cutting-edge knowledge**
- Explicit focus on link to **Public Finance Management**
- **Agility** to adapt to COVID-19 & bringing relevant lessons



Two approaches

- **Approach 1:** 44 month technical support in 8 partner countries
- **Approach 2:** on-demand technical support (1 year) through calls for proposals:
 - 1st call: response to COVID-19 crisis (10 countries)
 - 2nd call: COVID-19 recovery and beyond

Angola, Burkina Faso, Cambodia, Ethiopia, Nepal, Paraguay, Senegal and Uganda



Bangladesh, Cabo Verde, Cote d'Ivoire, Ecuador, Malawi, Myanmar, Nigeria, Peru, Sri Lanka and Togo

Closing SP gaps requires investments

- The financing gap in LMIC represents USD 1.2 trillion (3.8% GDP)
- LIC would need to invest an additional USD 78 billion (15.9% GDP) to close the annual financing gap in 2020
- **Sub saharian African** countries, today 5.6% of their GDP on social protection. They should add 8.2%, to close the financing gap, or multiply by 2.5 their current investment.

	Total gap (billions of US\$)	Total gap (% GDP)
All low- and middle-income countries	1,191.6	3.8
Low-income countries	77.9	15.9
Lower-middle-income countries	362.9	5.1
Upper-middle-income countries	750.8	3.1
Sub-Saharan Africa	136.9	8.2

How to finance it?

- **Domestic resources** in middle income countries
- Improving **budget efficiency**
- **International finances** to complement and support **domestic resource** mobilization efforts in low income countries

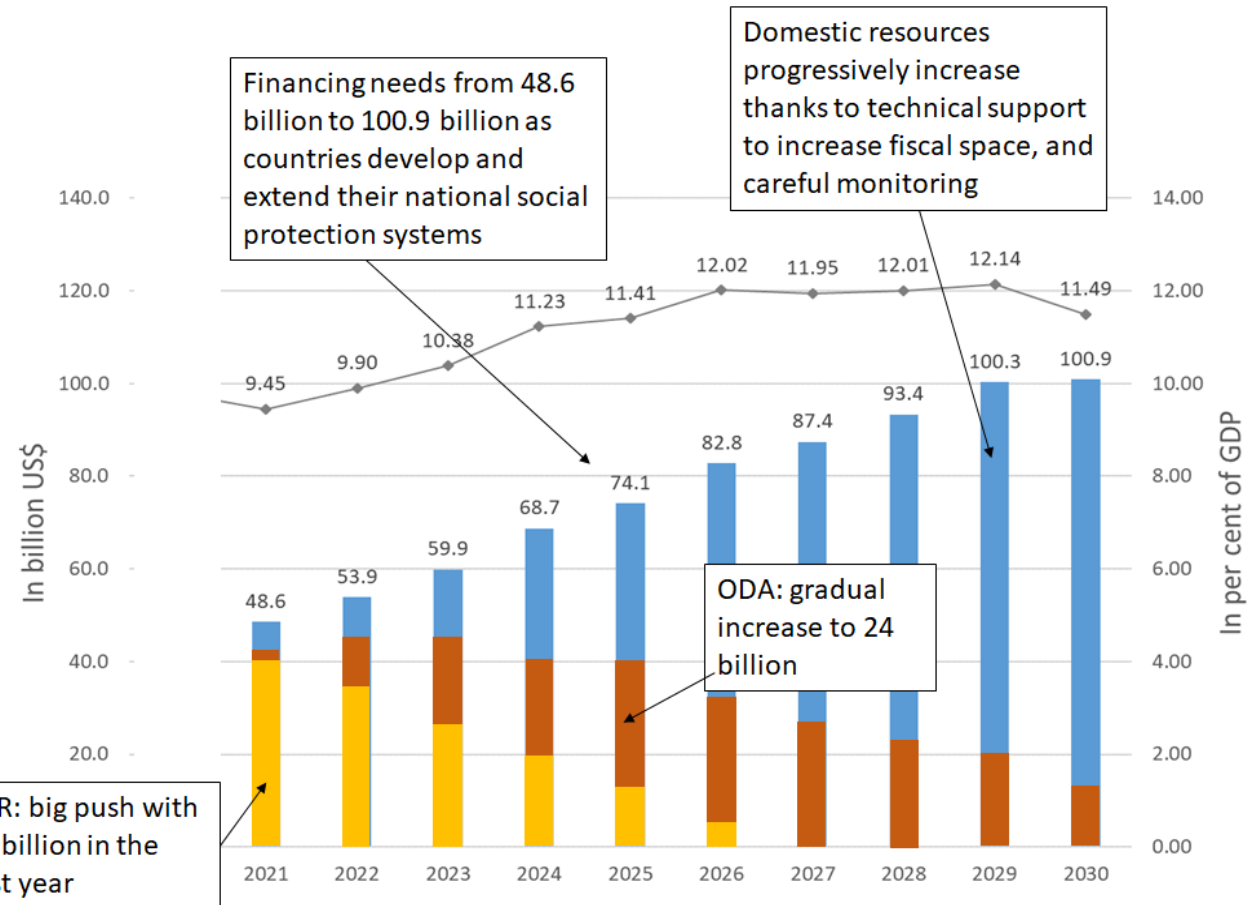
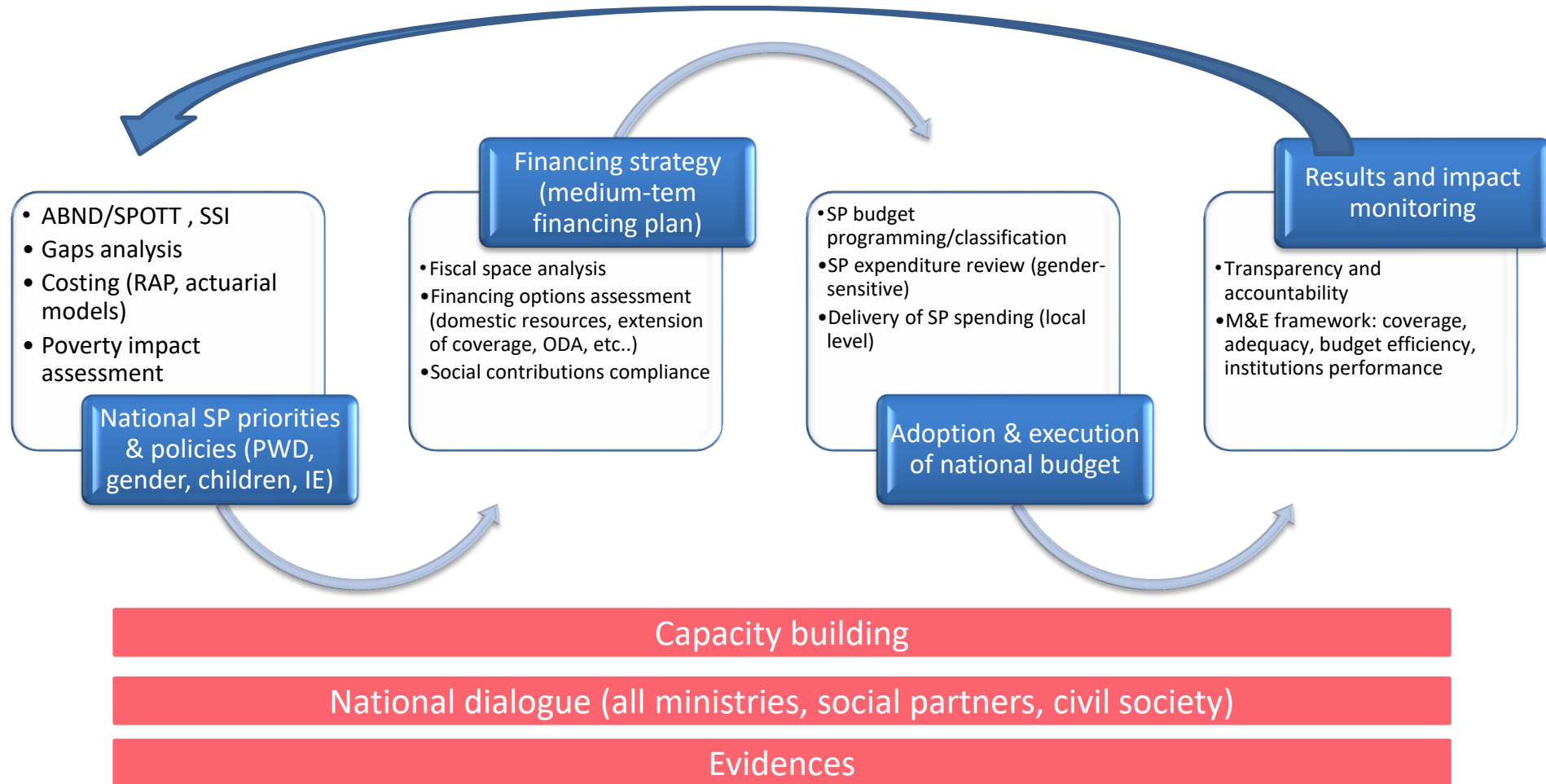


Illustration: financing needs for a social protection floor in low income countries: possible avenues for filling the gap

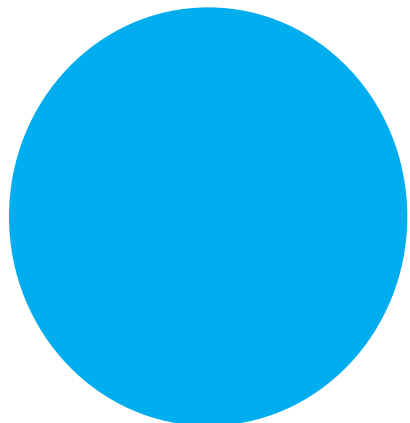
Synergies between SP and PFM



Expected results : building evidence and capacity for policy-making

- Confidence and national consensus through social dialogue.
 - Shared understanding of the national SP system configuration at the country level
 - Strategies for extending social protection (informal sector, women, rural, children, PWD) linking with macro-economic policies (employment, formalization)
 - Policy options and costs of extending social protection coverage
 - Policy and financing gaps identification
 - Impact assessment on poverty of different SP policies
 - Quantification and feasibility analysis of different options to mobilize domestic resources
 - Improved budget cycle and financing for SP (principles)
-

Thank you
Tomoo Okubo
Céline Peyron Bista



Speaker

Alix Machiels

Junior Professional Officer, ILO Senegal

A member of the ILO's Global Technical Team on Social Protection, Alix is currently working as a Junior Professional Officer at the ILO Country Office for Senegal, Gambia, Cape Verde, Guinea and Guinea-Bissau. She holds a Master's degree in Organizational Psychology. Prior to joining the ILO in Dakar, she spent 6 years in Asia, first in the private sector and then within the ILO's Enterprises development department in Bangkok.



Identifying sustainable financing options for social protection...

©ILO



...in Senegal, based on assessments and national dialogue



This project is funded by
the European Union

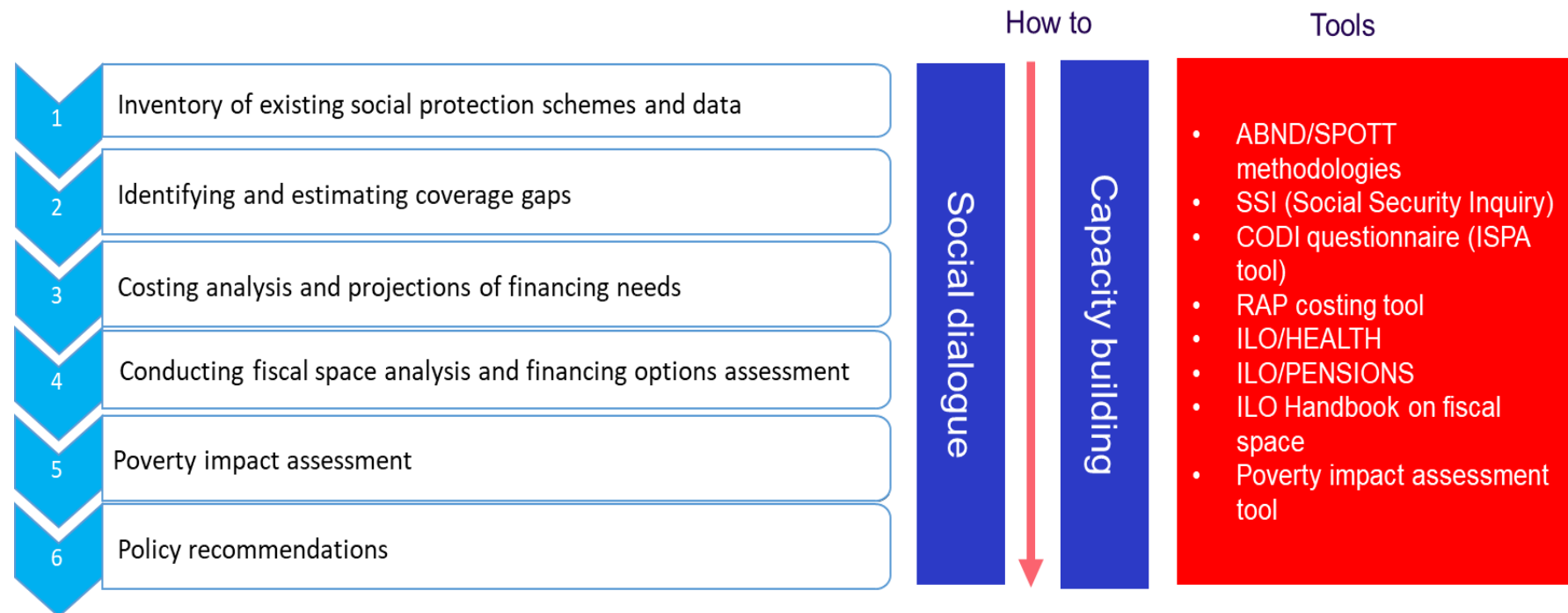


International
Labour
Organization



Global Coalition for
SOCIAL PROTECTION FLOORS

Process for identifying sustainable financing options



- **6-steps process** based on quantitative, qualitative and financial assessments

Process for identifying sustainable financing options

- Follows the **ABND methodology** (engaging stakeholders in a national dialogue around SP policy options)
 - Starts with the constitution of a **national working group**, under a government institution's leadership, and involving Ministry of Finance. In Senegal:
 - **CTAS** (Technical Committee for Support and Monitoring of the Project) involving all national stakeholders concerned by SP;
 - Restricted **technical working group** emanating from the CTAS including key ministries (MDCEST, MTDSRI, MFB, MEPC) and the ILO.
 - Relies on the **SPPOT**, by the ISPA group
-

The SPPOT tools

Joint interagency tools that provide a coherent framework for **analysis of social protection systems** at all levels:

- The system as a whole,
- Scheme/programme level,
- Concrete delivery mechanisms

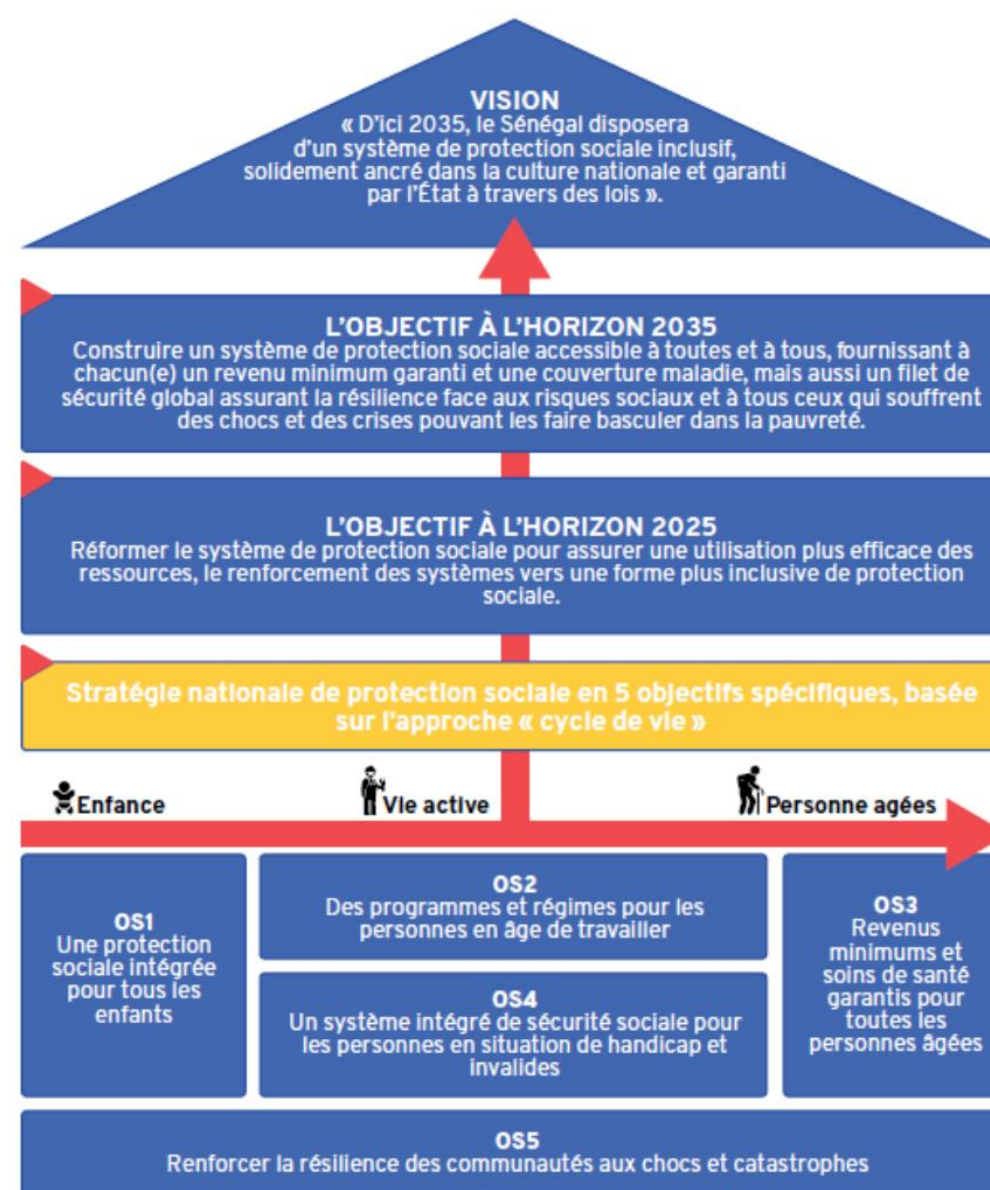


SP in Senegal

The government of Senegal considers SP as :

- A fundamental element of its economic and social development strategy;
- An investment rather than a financial burden;
- A response to vulnerability to disaster and (climate change) shocks.

National Social Protection Strategy
(SNPS 2016-2035)



This project is funded by
the European Union



International
Labour
Organization



unicef
for every child



Global Coalition for
SOCIAL PROTECTION FLOORS

Securing resources

One of the priority challenges for the implementation of the NSPS is **securing resources for SP**, through a **sustainable and affordable financing mechanism and improved PFM**:

- Large proportion of the population below the poverty line
- Need to implement extension programmes to establish a SP floor

Objective: **financial** resources allocated to public SP programmes should reach **at least 7% of GDP**.

STEP 1: INVENTORY OF EXISTING SCHEMES

In 2019-2020, the ILO supported the Government in the **overall review of the social protection system**:

- Analysis of the population's **social protection needs** (based on a review of the demographic, economic and social context)
 - For each activity sector,
 - Food safety
 - Living conditions and poverty
 - **Mapping of the social protection system** (based on SSI statistical data)
 - Legal, political framework,
 - Inventory of existing schemes and programmes
 - Institutional framework (architecture)
-

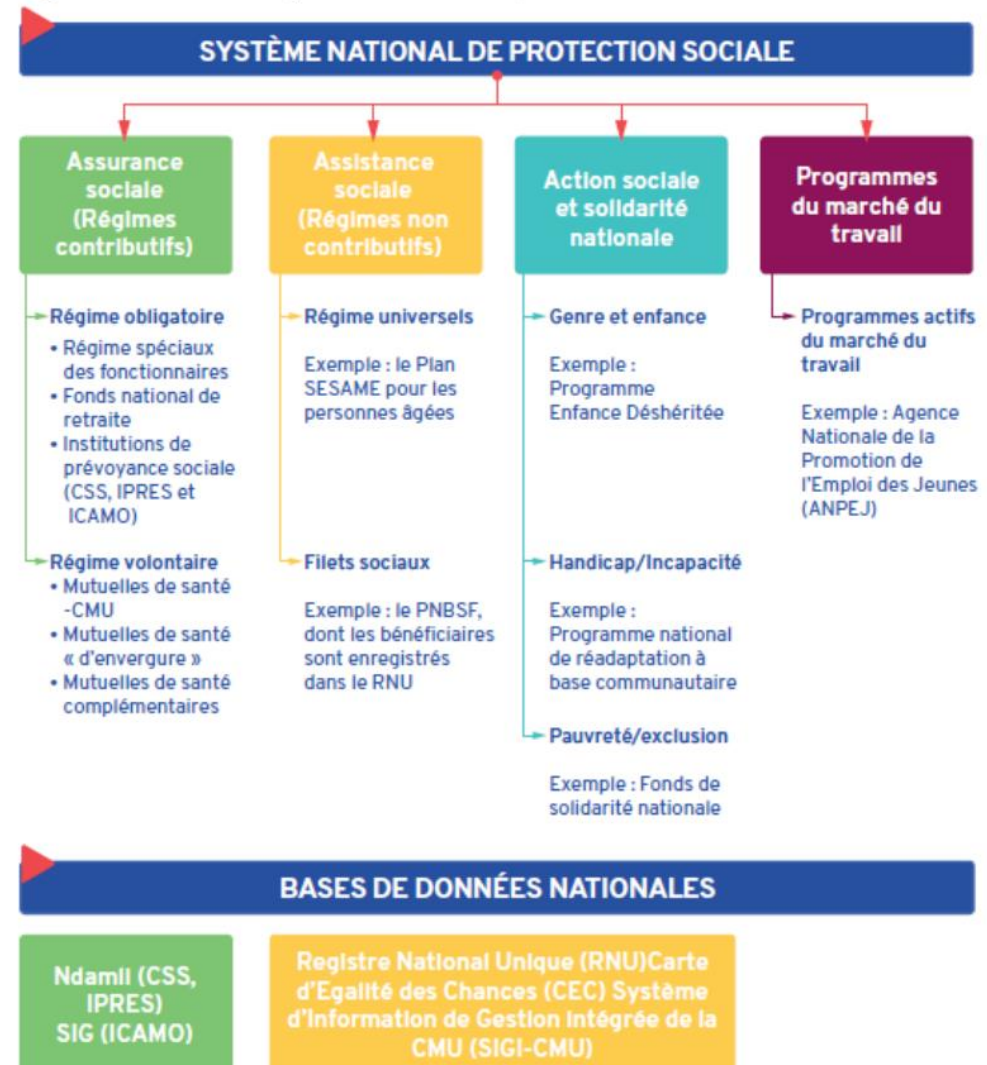
SSI TOOL

The ILO's Social Security Inquiry (SSI) database provides statistical data on (i) programmes and mechanisms and (ii) expenditures.

The database is available here:

<https://www.ilo.org/sesame/IFPSES.SSDBMenu>

Fig 2 : Architecture du système national de protection sociale

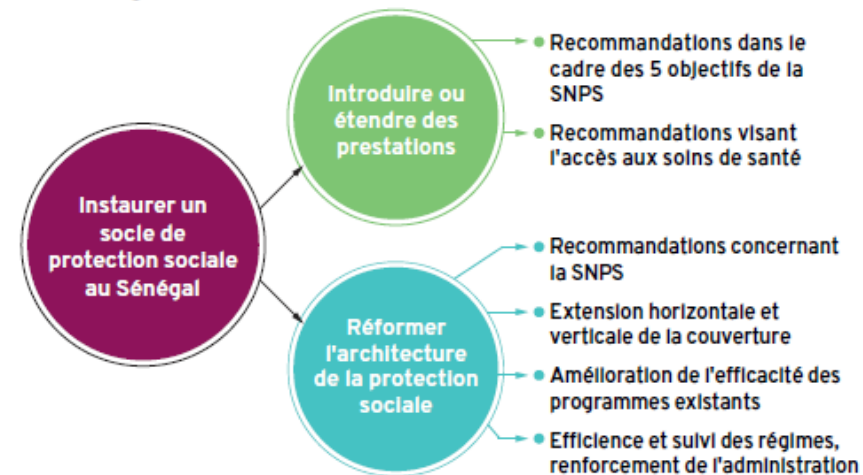


STEP 2: IDENTIFYING COVERAGE GAPS

This first step of the global review was followed by...

- Identification of **coverage and system gaps** in relation to the 5 objectives of the NSPS (+ access to healthcare) in terms of legal coverage, effective coverage, implementation and benefit levels
- Formulation of **recommendations** (based on a national dialogue) to:
 - Introduce new benefits or strengthen benefits
 - Improve the architecture of the system

Fig 4 : Recommandations pour un socle de protection sociale au Sénégal



The performance of a country's social protection system is assessed in CODI using the following

10 Performance Criteria:

- 1 INCLUSIVENESS
- 2 ADEQUACY
- 3 APPROPRIATENESS
- 4 RESPECT FOR RIGHTS & DIGNITY
- 5 GOVERNANCE & INSTITUTIONAL CAPACITY
- 6 FINANCIAL & FISCAL STABILITY
- 7 COHERENCE & INTEGRATION
- 8 RESPONSIVENESS
- 9 COST-EFFECTIVENESS
- 10 INCENTIVE COMPATIBILITY

Assessment table based on a 4 point scale to rate 18 key areas of SP systems on 10 performance criteria.

CODI TOOL

The **Core Diagnostic Instrument (CODI)** provides a unified framework to carry out a comprehensive assessment of social protection system performance
<https://ispatools.org/core-diagnostic-instrument/>

18 Key Areas in Social Protection Systems

Policy	Program Design	Program Implementation
1. Legal & Policy Framework 2. Alignment of Policies with Needs of Population 3. Policymaking Process 4. Policy Implementation & Capacity 5. Public Expenditure & Financing 6. Information Dissemination & Raising Awareness 7. Monitoring & Evaluation Systems	8. Eligibility Criteria 9. Benefit Design 10. Expenditures & Financing 11. Incentives	12. Identification 13. Eligibility Verification 14. Enrollment 15. Benefit Delivery 16. Monitoring & Evaluation 17. Complaint & Appeals Mechanism 18. Information Dissemination & Raising Awareness

STEP 3: COSTING ANALYSIS

The recommendations derived from step 2 were transformed into 24 scenarios by the working group.

The cost of each scenario was evaluated over a 10-year period.

A combination of 6 optimal scenarios is decided by the working group to define a social protection floor.

The resulting floor would represent **1.6 per cent of GDP** and 5.75 per cent of national public expenditure by 2025.

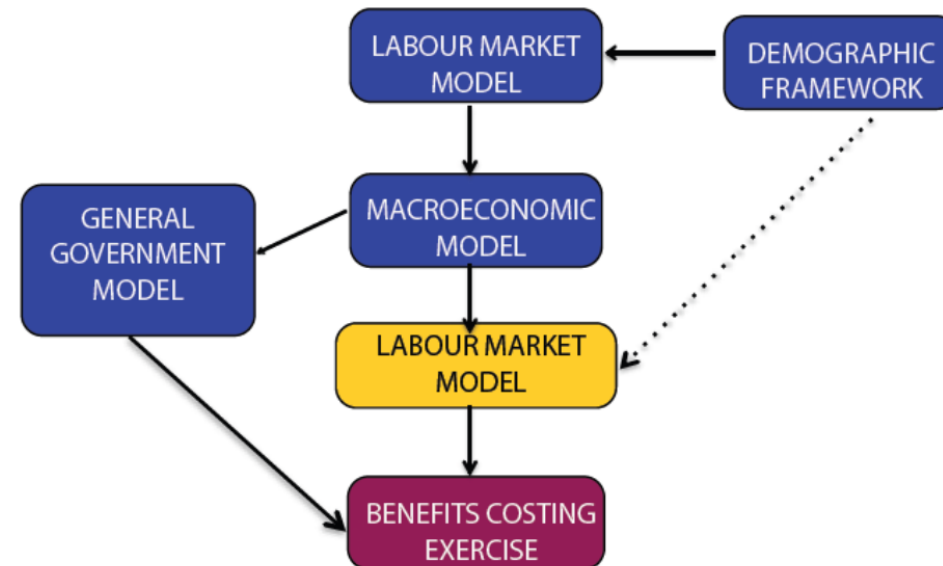
Rapid Assessment Protocol (RAP)

TOOL

Simplistic **projection model**
 (Excel-based) to estimate the
 costs of introducing one or
 more elements to the SP
 system for the next 5-10
 years.

Results facilitate policy
 discussion on the design and
 implementation of SP
 programmes.

Figure 4 : Schéma descriptif du modèle de budgétisation (RAP)



STEP 4: FISCAL SPACE ANALYSIS AND FINANCING OPTIONS ASSESSMENT

After the overall review...

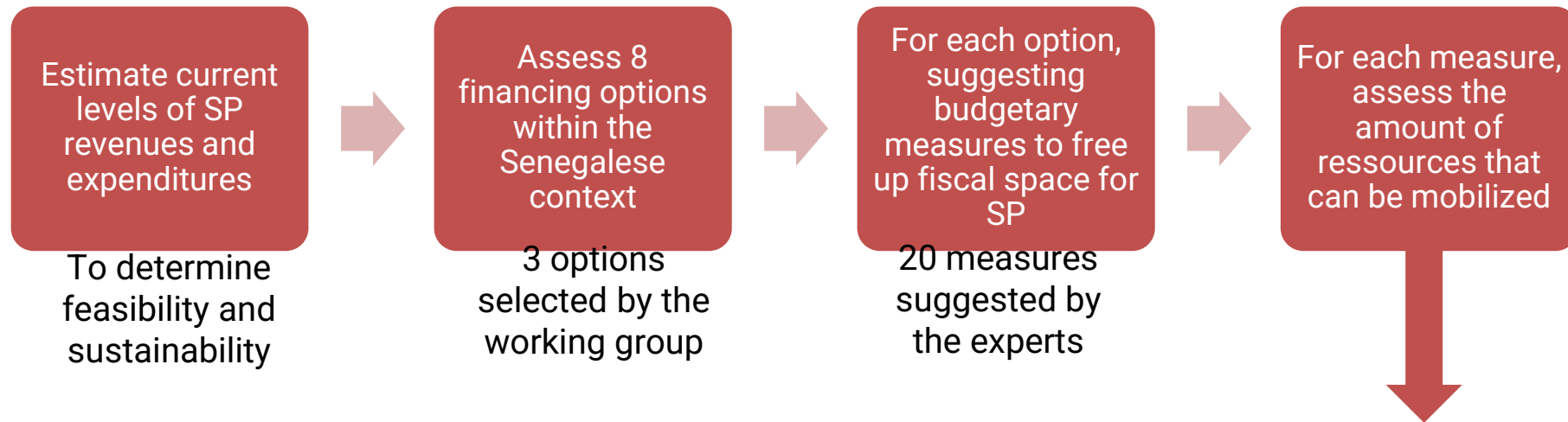
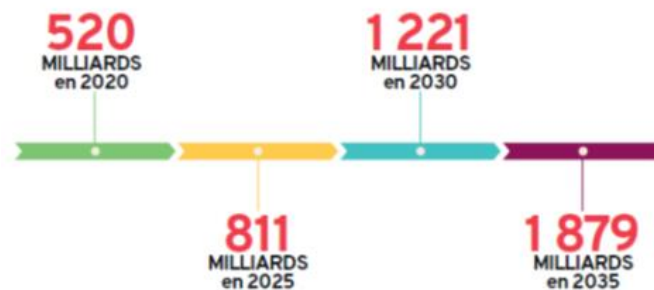


Fig 5 : Évolution des montants mobilisables, 2020 – 2035



Applying these measures could generate additional resources of CFAF 519.58 billion (3.2-fold increase) on Year 1.

Public spending on social protection would amount to 5.9% of GDP.

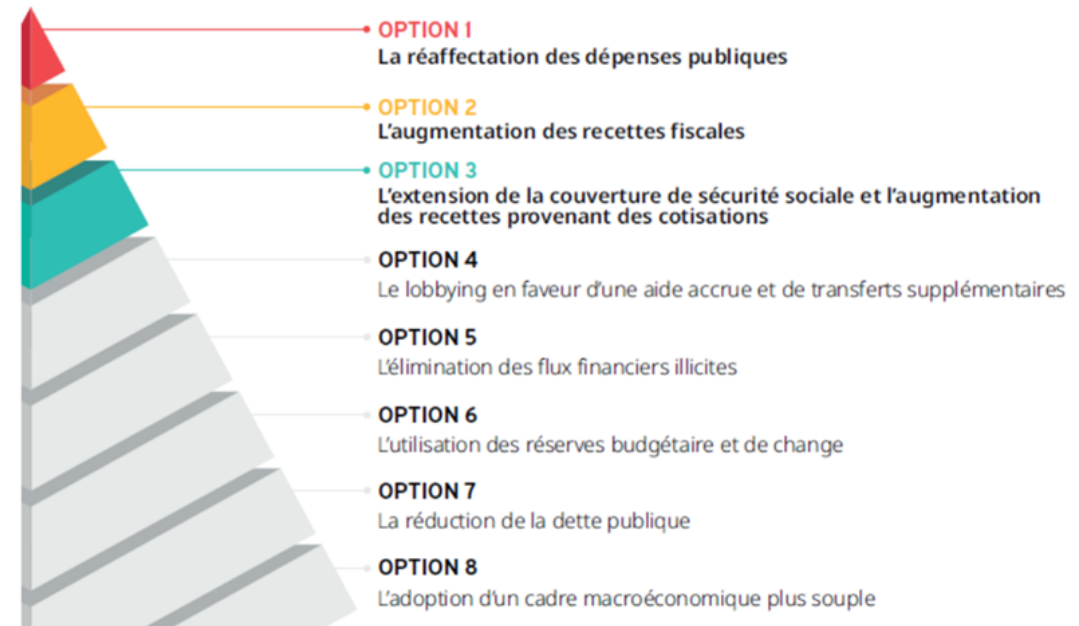
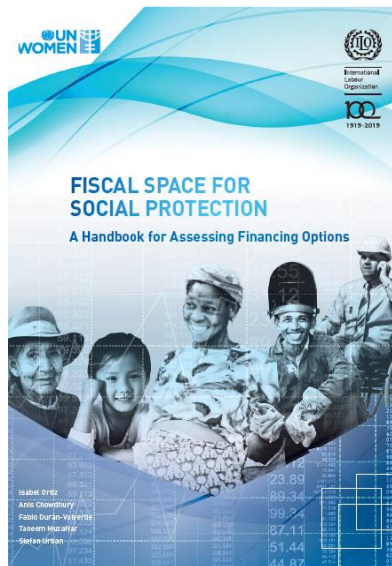
Fiscal Space for Social Protection Handbook

TOOL

Provides guidelines to assess financing options to extend social protection coverage and benefits.

Available here:

<https://www.social-protection.org/gimi/RessourcePDF.action?id=55694>



STEP 5: IMPACT ASSESSMENT

There is scope for Senegal to increase the fiscal space for social protection. The objective of devoting at least 7% of GDP to social protection can be achieved in the medium to long term.

But what is the impact on populations?

POVERTY IMPACT ASSESSMENT TOOL

TOOL

Currently being developed by the ILO.

For more information:

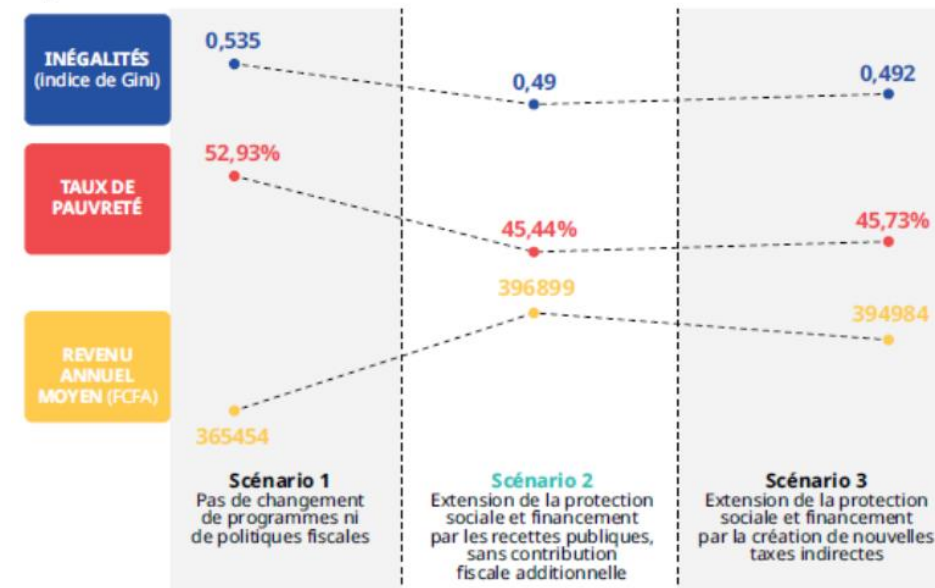
<https://www.social-protection.org/gimi/ShowWiki.action?id=7>

STEP 5: IMPACT ASSESSMENT

3 simulations were run to measure the impact of integrating these 6 programmes into the national SP system.

The comparison of the 3 simulations shows a higher impact of the optimal scenario on **poverty** (-7.5%), **revenue growth** (+8,21%) and **inequality** (-0.045 Gini points) compared to the baseline situation.

Fig 7 : Résultats des 3 scénarios



Quel avenir pour la protection sociale et son financement ?

STEP 6: IMPROVING PUBLIC FINANCE MANAGEMENT

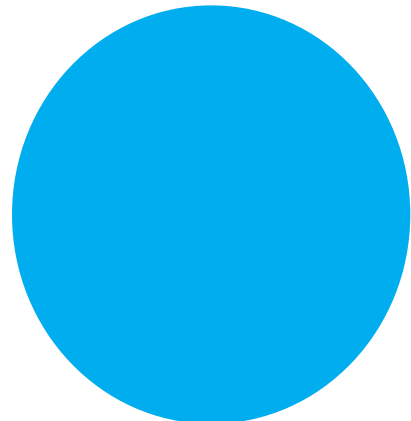
On-going work:

- Definition of the scope of social protection (based on the inventory + international standards)
- Improvement of the classification system of social protection expenditures
- Gender-sensitive social protection expenditures review



Results of Steps 1 to 5
are reported in 2 studies
available here:

<https://socialprotection-pfm.org/partner-countries-fr/senegal-fr/>



KEY MESSAGE

It is possible to conduct fiscal space analysis and financing options assessment in a comprehensive, participative manner when the exercise is based on:

- **Evidence**, sounds diagnostic of the system/coverage gaps, implementation gaps, and costing exercise.
- **National dialogue**, engaging a variety of stakeholders including Min of Finance, line ministries, social partners and civil society.
- Internationally recognized principles /**approaches** (ILO standards), and **tools and methodologies** (ISPA tools).



THANK YOU

Alix Machiels

Jr Professional Officer – Social Protection

machiels@ilo.org



This project is funded by
the European Union



International
Labour
Organization



Global Coalition for
SOCIAL PROTECTION FLOORS

Speaker

Usha Mishra Hayes

Chief Social Policy, Evidence and Evaluation, UNICEF Nepal

Usha Mishra is leading UNICEF Social Protection work in Nepal and has more than 18 years of experience in international development in senior management, policy analysis, research and advocacy gained with the UN, DFID, Oxfam GB and the Government of India. She served as Chief of Social Policy with UNICEF in Cambodia, Tanzania, Afghanistan and Nepal, supporting ministers and top civil servants in reforming and strengthening national social protection delivery systems. Awarded by the government of Cambodia for her work on social protection in ASEAN, she also contributed to important publications, including: “From Safety Net to Safety Ladder”, edited by David Hulme and Hossain Zillur Rehaman , Universal Press, 2014; “What works for the Poorest in Africa”, edited by David Hulme and David Lawson, Practical Publishing, 2017; and, “Social Protection: Lands of Blooming Hope”, Palimpsest, Delhi, May 2020.



Enhancing investment in the context of a Crisis: Financing of Social Protection in Nepal

Dr Aniruddha Bonnerjee and Usha Mishra Hayes

Social Policy, Evidence and Evaluation section

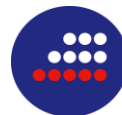
UNICEF Nepal



This project is funded by
the European Union



unicef 
for every child

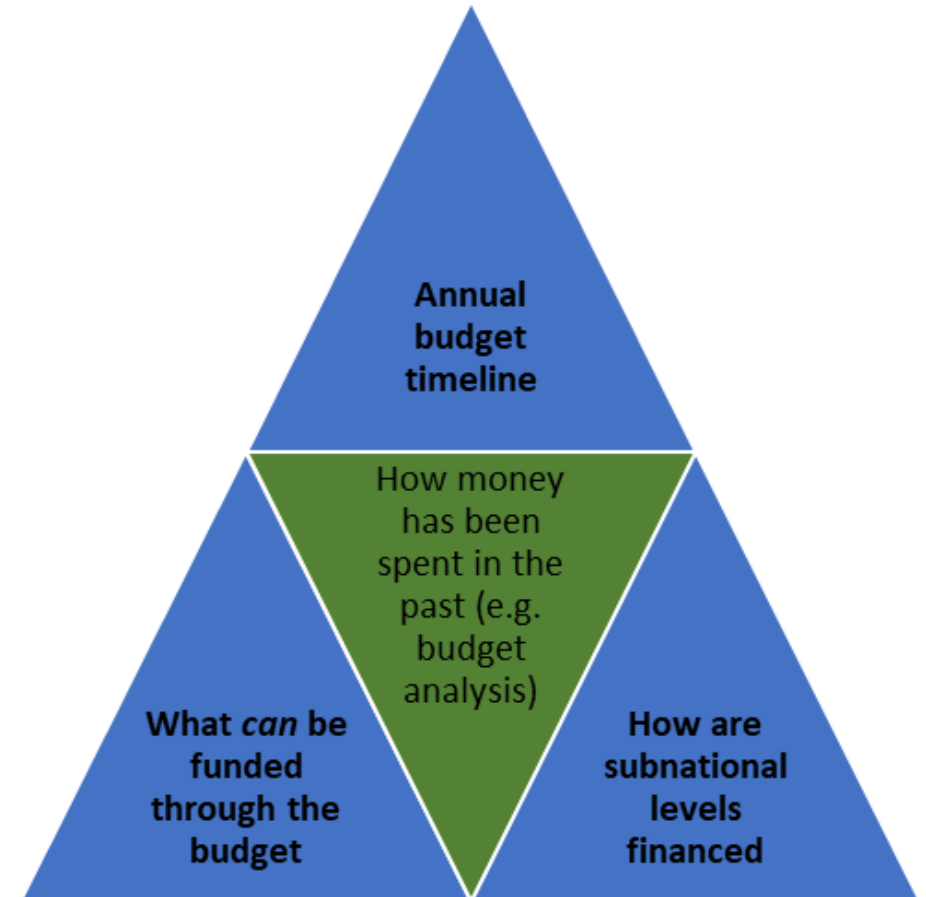


Global Coalition for
SOCIAL PROTECTION FLOORS



Framework for influencing fiscal space

- Aligned to the UNICEF Global Guideline on PF4C
- Analyzing the impact of COVID on child outcomes
- Recognizing high-impact-high relevance-high urgency measures
- Triggering, influencing discussions for maintaining/increasing investments in children (through understanding of the budget triangle- Fig 1)
- Expanding/deepening collaboration with IFIs and bilateral



Budget Triangle, UNICEF PF4C 2020

Key strategy - Cross-sectoral and multi-pronged PF4C advocacy part of the larger strategy



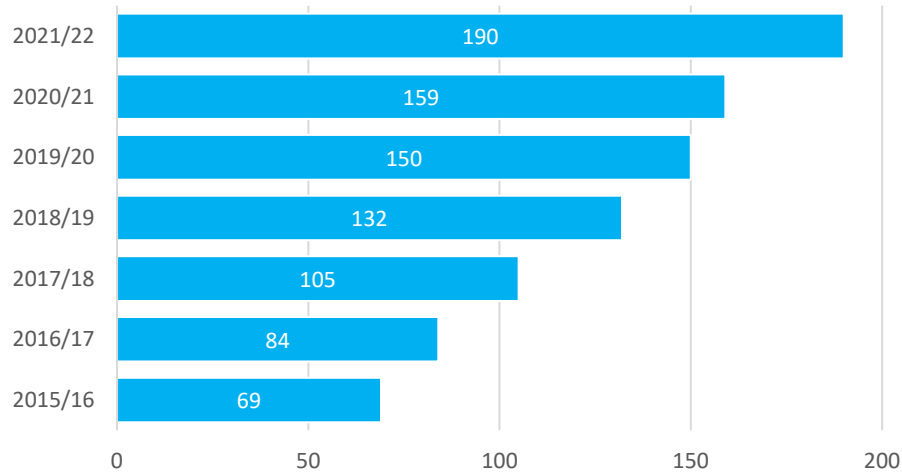
A multi-dimensional tracker and we promote integrated multisectoral approaches to enhance social protection efficiency

For example, linking nutrition budget analysis to child grants, linking nutrition budget support to expansion of child grants

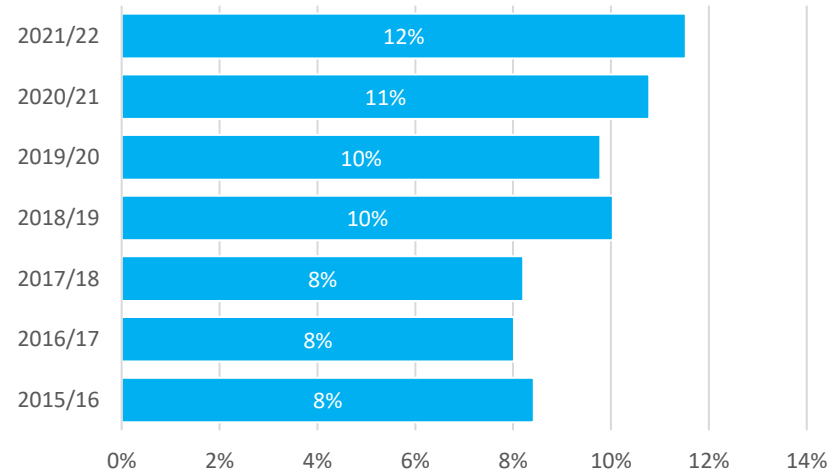
Dimension of results captured by UNICEF Child and Family Tracker Nepal

Key Trends in social protection budgets

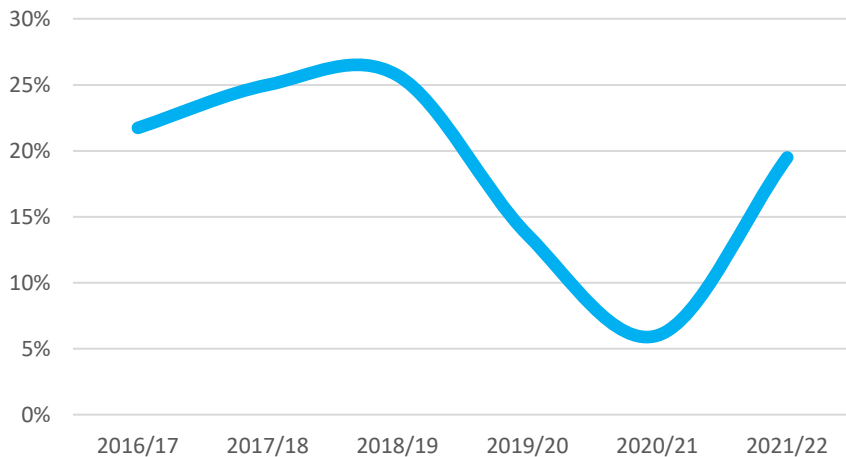
SP Budget allocations (NPR Billion)



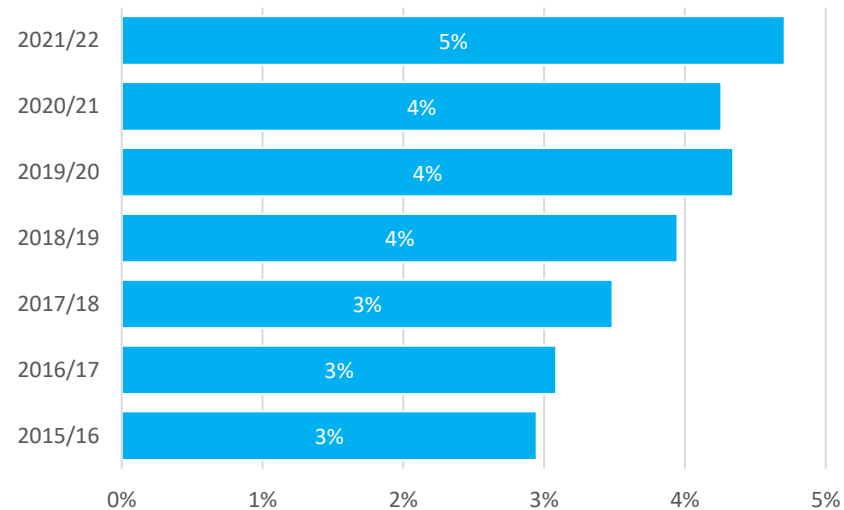
SP Budget as % total budget



ROG of SP budget (% increase)

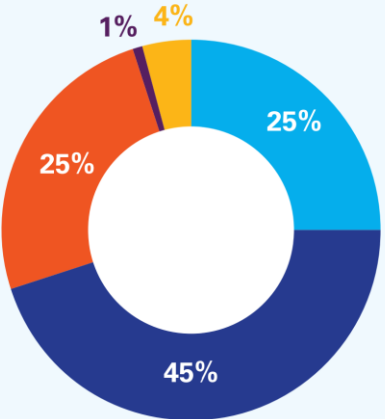


SP Budget as % GDP

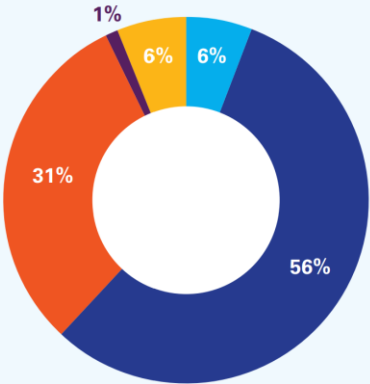


- Nominal expenditure increased from NPR 69 Billion in 2015/16 to NPR 190 Billion in NPR 2021/22
- However this growth has been uneven as it is driven by many factors including programme expansion, introduction of new programmes and benefit level adjustments.
- As a share of the union budget it has grown from 8% in 2015/16 to 12% in 2021/22.
- As a share of GDP it has grown from 3% to 5%
- Scope to examine means to support recent growth and bring the growth path back to earlier years
- 100% financed by revenues

EQUITY, EFFICIENCY, SUFFICIENCY

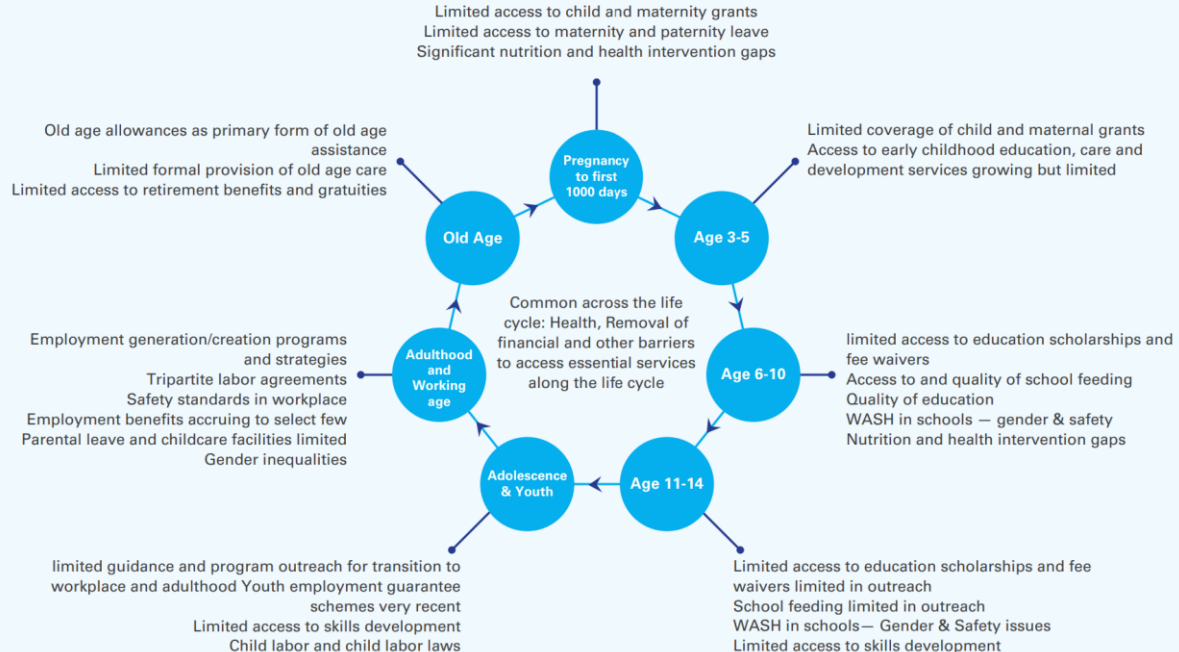


■ Child Grant ■ Old Age ■ Widows and Single Elderly Women ■ Ethnic minorities ■ Disability



■ Child Grant ■ Old Age ■ Widows and Single Elderly Women ■ Ethnic minorities ■ Disability

Composition of SSA beneficiaries (T) and expenditures (B)



- 1. Expenditure biased towards the elderly:** Recipients of the child grant comprise 25% of SSA beneficiaries but are allocated only 6% of expenditures. Old age beneficiaries comprise 45% of all beneficiaries, but are allocated 56% of expenditures
- 2. Question of whether the child grant is ‘sufficient’** and the need to examine it with respect to achieving equity and sufficiency vis-à-vis other SSA programs
- 3. Gaps exist along the life-cycle** despite more than 75 programmes listed by the NPC under SP. Could achieve economies of scale and efficiency by combining and harmonizing schemes and programmes. **Demographic window of opportunity will soon vanish**

unicef.zoom.us/j/97775789009?join_track_id=&mt_code=&meeting_result=&tk=&cap=undefined&refTK=&fm=&po=7&spk=yo796E0UJ-6GRN-H...

Barsha Dharel

Participants (

Find a participant

- Barsha Dharel(Host)
- Raju Maharjan
- Surendra Karki (Guest)
- Raj Maharjan(Co-host)
- Raju Maharjan(Guest(Co-host))
- Thakur_interpreter_Primary
- Z - Thakur secondary... listening
- Rakshya Baral
- Usha Hayes
- Napur Kulkarny, UNICEF HQ
- Plush Kayastha
- Eike Wisch UNICEF Representative N
- Toya Subedi
- Anil Pokhrel
- akila
- Mark James Johnson
- Mamta
- Sumit Dugar
- Soyesh Lakhey -WB
- Carla De Lacerda

Powered by Zoom

एकिकृत सामाजिक सुरक्षा लगत किन?

To integrate data from different social programs (and their MIS) of several different schemes to identify "who receives what?",

To support registration and determination of potential eligibility for social programs.,

Coordinating and monitoring the "Supply" of social services,

Accessing gaps and duplications in coverage.

UNICEF Nepal was live. November 20, 2020

World Children's Day 2020: Children's parliamentary session

In this first session for #WorldChildrensDay, children bring forth their concerns and issues inclu...

See More

304 76 Comments 6.2K Vi

Like Comment Share

Comments

Most Relevant

Rajendra Shakya 36:44
Happy Children's Day. Wish we all work together to make this world a better place for children in the days to come and create space for children to participate in the activities and decision making process that affect them.

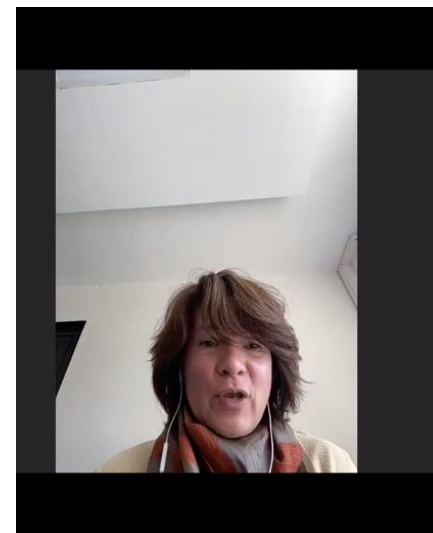
Neeva Pradhan 16:53
Happy World Children's day to all from Daya Foundation. Thanks to UNICEF for this excellent program

Write a comment...



What did we do?

Created national and sub-national advocacy moments through conferences, webinars and dissemination of evidence



Speaker View

Chhija Bhandari Thakur Dhaxal

Deputy Mayor kalyan Laxmipur Patari Gaup...

BISNUPUR RMu... Manish(Dhanga...

Barsha Dharel... 91697303019

12 Participants Polls Chat Share Screen Reactions More

End

To: Everyone Type message

Communication and visibility



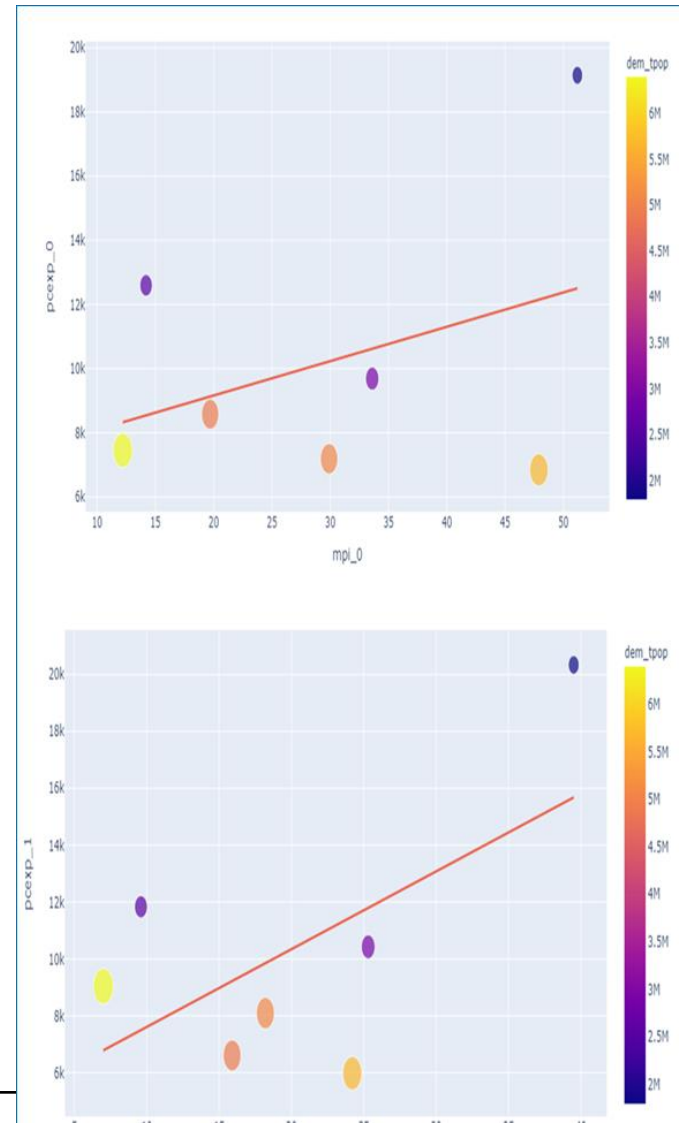
LINK	Stats
<u>Evidence, Policy and Programme: Advocacy Workshop</u>	Reach: 5,597 people Video Views: 1,504 Reactions: 97
<u>WCD2020: Children's Parliamentarian's Session</u>	Reach: 23,810 people Video Views: 6034 Reactions: 623
<u>Social budget brief launch: Social protection</u>	Reach: 20,121 people Reactions: 162
<u>Social budget brief launch: Nutrition</u>	Reach: 2,429,200 Reactions: 13,189
<u>Social budget brief launch: Health</u>	Reach: 1,663,432 Reactions: 6,506
<u>Social budget brief launch: Education</u>	Reach: 9,220 Reactions: 61
<u>Social budget brief webpage</u>	214 pageviews 100 downloads



Result:

Here is the most telling example of how we influenced the budget

(we are just claiming some attribution)



Responsiveness of PG budget allocation (per capita) to MPI in 2019/20 (T) and 2021/22 (B)

- Slopes of the two lines shows responsiveness increased:
 - In 2019/20 if MPI increased by 1%, per capita budget allocations increased by NPR 107. The observed correlation coefficient was only 0.38
 - In 2021/2022 if MPI increased by 1% per capita budget allocations increased by NPR 274. The observed correlation coefficient increased to 62%
- UNICEF, NPL CO is the only agency to have done this analysis and presented to key government counterparts
- Impact = (274-107)=167 NPR increase in per capita budget allocation

Lesson: Linking to the Policy Imperatives

- A key driver of the inclusion/equality agenda- an outcome of the protracted civil war (?)
- Stronger policy focus on SP – not as a minimal package but as a human right (enshrined in the constitution)
- SP expenditures are seen as a smart strategy for the country's future – in financial terms it's a call option to improve productivity and the asset base now and even more so in the future.
- Worked with national Planning Commission to strengthen it within the national development strategy and an Integrated National Social Protection Strategy
- In the context of COVID 19, policy imperative aimed at stabilization and green recovery
- Stronger need to invest in life-cycle approach in the context of shrinking demographic window of opportunity

Lessons: Financing- strengths and weaknesses

1. In Nepal, SP is 100% financed from revenues. Therefore final impact depends on whether the taxes are regressive or not and the value of the benefit.
2. Most countries today rely on partnership financing for SP which includes elements of
 - Taxation for sustainability
 - Co-financing (insurance based schemes)
 - Blended financing to include private sector and other initiatives (e.g, transport subsidies)
 - Loans from donors (e.g, typically for MIS systems and technical assistance)
3. Disadvantage of single-source financing is sustainability – so if there is a tax shock SP may suffer, hence countries are moving towards amalgamated sources of financing (as above).

Lesson: Financing options for Nepal

- **In Nepal bullish expectations about medium/strong recovery even as a lot depends on India/China**
 - Tax revenues should also increase (even if Tax to GDP ratio remains unchanged) thereby providing one option of increased financing.
 - Further resources could come from reorganizing from over 75+ programmes would harmonize resources
 - Further resources if government commits to increasing allocation as % of GDP or total budget
 - Further resources from donors as there is also a critical need to build and manage strong MIS systems for SP as it is multi-sectoral and spread over several agencies and layers of government.



unicef
for every child

You are cordially invited to the
**‘Evidence, Policy and Programme:
Informing national recovery for building
a better and inclusive future for families,
children and vulnerable groups’**

27 September 2021 | 2:00-5:00 pm

KEY CHAIRS AND SPEAKERS:

Dr. Bimala Rai Paudyal | National Assembly of Federal Parliament

Dr. Ram Kumar Phuyal | National Planning Commission

Mr. Dinesh Bhattar | National Natural Resources & Fiscal Commission

Mr. Dhani Ram Sharma | Ministry of Economic Affairs & Planning (P-1)

Ms. Elke Wisch | UNICEF

Mr. Kewal Prasad Bhandari | National Planning Commission

Mr. Krishna Prasad Sharma | Ministry of Finance

Mr. Marco Gemmer | European Union

Mr. Rupesh Kumar Shah | Chief Minister's Office, Province 2

Mr. Sishir Dhungana | Office of the Prime Minister & Council of Ministers (TBC)

Zoom link: <https://unicef.zoom.us/j/98885449383>

Password: 992551



**Final thoughts: Partnerships
and advocacy**

- It is part of the larger influencing effort - an additional arrow in the quiver of evidence and arguments
- UNICEF Programme Chiefs relaying the analysis in the technical working group
- A home grown and sustained capacity within the country office
- Dissemination through social media and e-conferences including among the local govt
- *An enabling, strategic engagement with EUD*



Conclusion

- Allocation equity and efficiency is key
- Time to turn crisis into opportunity!
'Reimagining a better post pandemic world for Children'
- *Anchoring to GRID- climate change and inclusive recovery*



unicef 
for every child



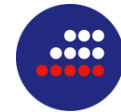
This project is funded by
the European Union



Social Protection
& Public Finance Management



unicef 
for every child



Global Coalition for
SOCIAL PROTECTION FLOORS

Thank you!!!

Speaker

Bart Verstraeten

General Director, WSM

After obtaining a Master in Law (KU Leuven, 2002) and a Master in Human Rights and Democratization (European Inter-University Centre for Human Rights and Democratization (EIUC), 2004), Bart took his first steps in the world of international cooperation within the Christian Labour Movement. First as coordinator of an international association, called Social Alert International (2006-2008), then within WSM, the NGO of the Christian Labour Movement of Belgium (2008 - present). Currently he is the general director of WSM. This organization works together with more than 100 social movements around the world to realize the Decent Work Agenda in general, and the right to social protection in particular. Together, all these organizations are part of and work together within INSPR (International Network for Social Protection Rights). WSM is the coordinating organization of this international network. WSM is also an active member of other networks (like the GCSPF) and intergovernmental coordination mechanisms (like USP2030, UN SPIAC-B, ILO Development Partners Meeting). Together with HelpAge and Oxfam, they take the lead for the involvement of the GCSPF in the new EU-funded Global Action on Public Finance Management for Social Protection which is jointly implemented by the ILO, UNICEF and the GCSPF.



Speaker

Uzziel Twagilimana

Deputy Director Programmes, WSM

Uzziel TWAGILIMANA, is representing WSM, as the GCSPF coordinating organization of the SP&PFM project in Senegal. He has accumulated more than 20 years' experience in training, coaching, advocacy and supporting CSOs, trade unions and social movements across the African Continent on the theme of Decent work and the right to social protection, with a special focus on informal and precarious workers. Uzziel has been recently appointed as the new WSM Deputy Program Director and is based in Brussels.





Making public finance management work for social protection, lessons learned from Senegal and Nepal: the role of civil society, including social partners



This project is funded by the European Union



International
Labour
Organization



Global Coalition for
SOCIAL PROTECTION FLOORS

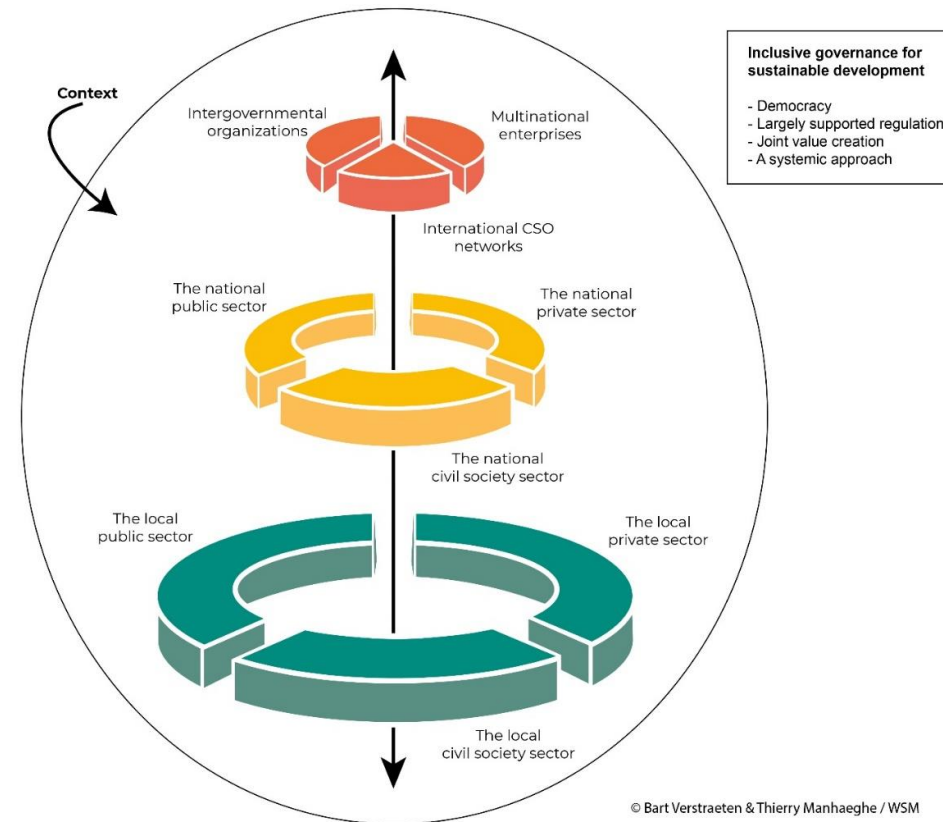
PFM4SP: supporting countries to strengthen and expand national social protection systems by improving the link between public finance management and social protection.

This demands: **effective, evidence-based and inclusive budgeting processes**

Inclusive = with **the effective and structural involvement** of all relevant stakeholders, including **civil society and social partners.**

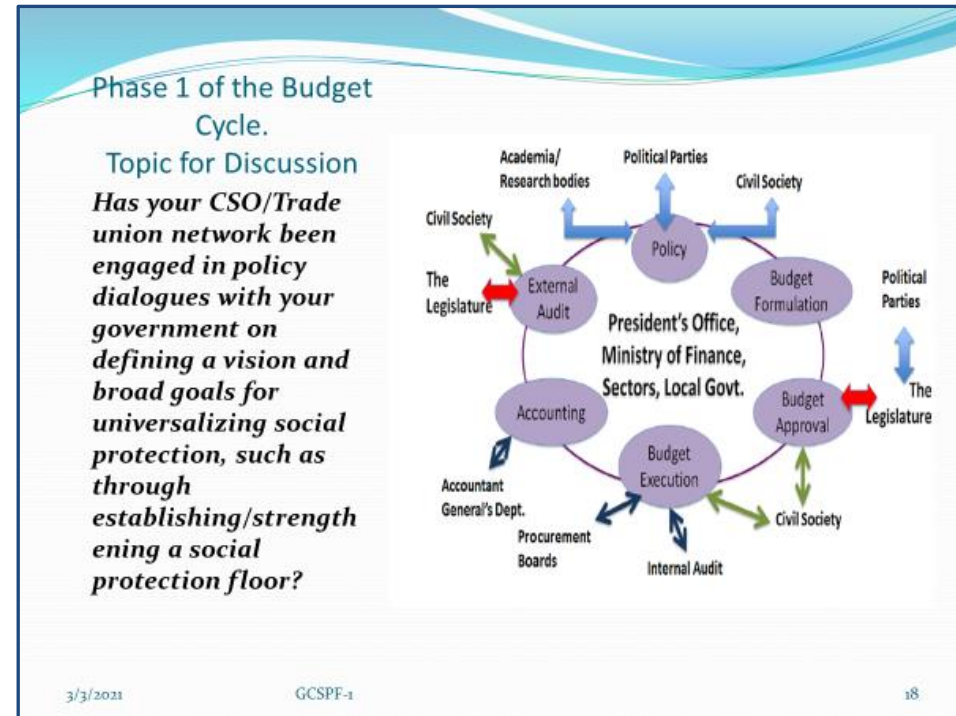
GCSPF: ensuring the involvement of civil society, including trade unions

- Need for institutionalised forms of dialogue to reach consensus, ensure that the voices of people and communities are heard and taken into account.



GCSPF: ensuring the involvement of civil society, including trade unions

- Global training on PFM4SP: February 2021
- Strengthen the capacity and understanding of GCSPF constituents on public finance management
- Identify our role in the different phases of the budget cycle



Training manual available in English and French.

Multiplicator effect: start of national training workshops for the CSO networks in the 4 intervention countries.

Participation in the global training course which ILO, UNICEF and the GCSPF jointly organized (18 October to 24 November).

Lessons learnt: effective and structural participation is work in progress as is building our internal capacity.

Country experience of Sénégal



PFM CAPACITY BUILDING ACTIVITIES IN SENEGAL

Various channels

Intercontinental training

General training on PFM (3 persons from Senegal)

National workshops
with ILO and UNICEF

General training on Social protection, PFM,
fiscal space for SP, advocacy, ...

Specific training by
GCSPF/WSM

Vision and strategy of extending Social
protection, programme oriented budgeting,
Power mapping exercise on PFM, strategies
for advocacy, grassroots awareness of PFM
and SP, social accountability.

Advocacy

Identification of decisions makers:
parliament, ministries, local Gouvernement,
élaboration of projects of position papers

In the pipeline intensive advocacy and awareness raising....

- **Advocacy to central government**: 3/8 options (fiscal space, reallocation of resources, extending SP).
 - **Advocacy to local government**: SP for disability, seniors, and children – coranic schools, regular payments of grants to mutual health organisations.
 - **Mass communication and sensitisation**: banners, community radios, flyers, pamphlets, short videos for social media, etc.
-

Some images...



PROGRAMME SYNERGIE PROTECTION SOCIALE ET GESTION DES FINANCES PUBLIQUES (volet GCSPF)

Session de renforcement de capacités en gestion des finances publiques et Budget-programme des OSC et des syndicats

**Module 1:
Préparation et adoption du
budget-programme de l'Etat**

Présenté par
Momoyah Mohamed Lamine SYLLA
Conseiller en planification

18/11/2021



PROGRAMME SYNERGIE PROTECTION SOCIALE ET GESTION DES FINANCES PUBLIQUES (volet GCSPF)

Session de renforcement de capacités en gestion des finances publiques et Budget-programme des OSC et des syndicats

**Module 3:
Suivi, Contrôle et
Reddition des comptes**

Présenté par
Momoyah Mohamed Lamine SYLLA
Conseiller en planification

18/11/2021

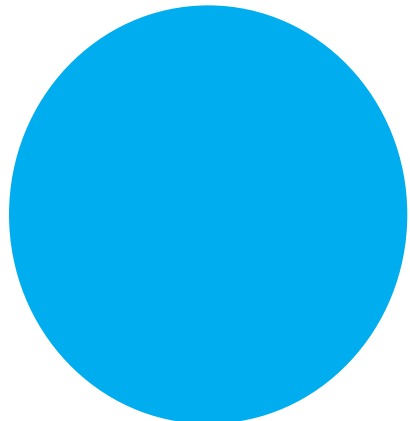


Thank you

Bart Verstraeten

Uzziel Twagilimana

On behalf of the GCSPF



Thank you for joining

Make sure to answer our webinar survey,
available after the session!

+ Become a member of



social**protection**.org