



Social Protection
& Public Finance Management

IMPROVING SYNERGIES BETWEEN SOCIAL PROTECTION AND PUBLIC FINANCE MANAGEMENT

2020–2023



© UNICEF/ Frank Dejongh



Funded by the
European Union



International
Labour
Organization

unicef 
for every child



Global Coalition for
SOCIAL PROTECTION FLOORS

INTRODUCTION

The Programme **Improving Synergies between Social Protection and Public Finance Management** provides medium and shorter-term support to multiple countries aiming to strengthen their social protection systems and ensure sustainable financing over time.

Activities focus on enhancing the design and implementation of social protection systems, ensuring they are gender-sensitive, disability-inclusive and shock-responsive, and improving their financing through strong public finance management. Launched in 2020, the initiative promptly addressed the social challenges of the COVID-19 crisis.

The Programme is funded by the European Union (EU), as part of the ILO Flagship Programme on Social Protection, and jointly implemented by the ILO, UNICEF and the Global Coalition for Social Protection Floors (GCSPF), in close collaboration with national partners and EU delegations.



“ By combining thematic support on social protection with improving public finance management, this programme acts as an accelerator to achieving universal social protection in terms of coverage and adequacy of benefits.

Henriette Geiger
*Director, People and Peace
DG INTPA
European Commission*



THEORY OF CHANGE



Universal social protection

Outcomes

Improve **design and financing** of social protection systems to achieve SDGs 1 and 10

Implement and monitor gender-sensitive and disability-inclusive social protection systems and programmes

Build **shock-responsive** social protection systems that can be scaled up during crises, learning from the COVID-19 crisis

Results

- Adequate, sustainable and gender-sensitive social protection financing through improved coordination, fiscal space analysis, and diversification of funding sources

- Enhanced evidence and tools, benchmarking of good practices that support informed and coordinated decision-making

- Strengthened capacities and administration to achieve the best impact of social protection budgets

- Strengthened knowledge and technical capacities to plan, deliver, monitor and report on social protection programmes

- Increased capacities of partner countries to establish adaptive social protection mechanisms that build into sustainable social protection systems

Key drivers



- International labour standards and human rights instruments (rights-based approach)
- Inclusion of persons with disability and non-discrimination
- Promotion of gender equality

Technical support



- Capacity building of national and subnational stakeholders
- Research and evidence generation
- Knowledge sharing & partnerships
- National dialogue process, including social partners and civil society organizations

“ We have to ensure that there is equity and solidarity in financing. So that those with little or no earning capacity can nevertheless enjoy at least a minimum level of social protection through a solid social protection floor.

Shahra Razavi
Director
ILO Social Protection



BACKGROUND

Social protection is key to reducing poverty and inequalities. Extending its coverage and adequacy is a global challenge.



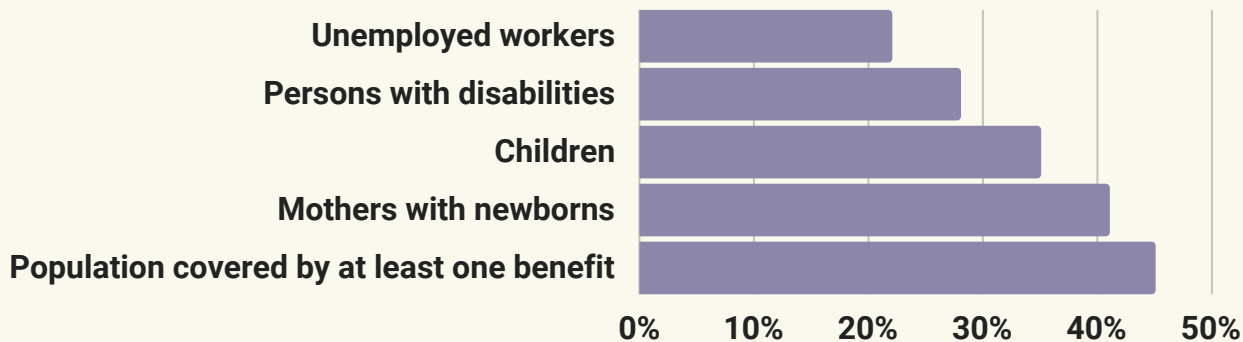
4 billion people are not protected.



getindonesia2 via Canva.com

Some vulnerable groups and workers in the informal economy are in the worst situation.

Social protection coverage (SDG indicator 1.3.1):



COVID-19 is worsening existing socio-economic inequalities.

114 million people worldwide lost their jobs in 2020.

120 million were pushed into extreme poverty in the same year.

150 million children fell into multidimensional poverty, resulting in 1.2 billion children now living in deprivation.



“Reversal of development gains due to COVID-19 is of great concern, showing the urgent need for extending social protection. Even in times of crisis, we should not forget about the importance of investing in system-building.”

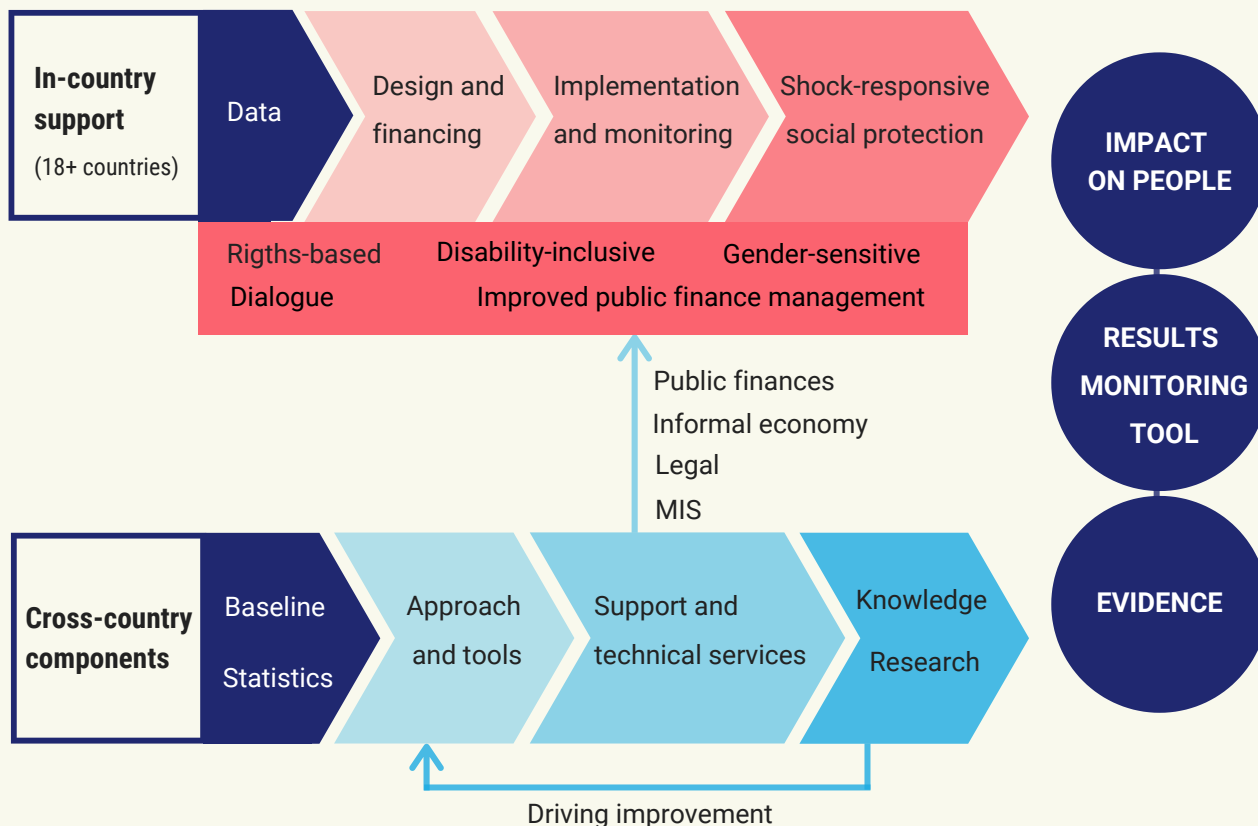
Natalia Winder Rossi
Associate Director
and Chief of Social
Policy, UNICEF



Sources: ILO, *World Social Protection Report 2017-2019*; World Bank, *Updated estimates of the impact of COVID-19 on global poverty: Looking back at 2020 and the outlook for 2021*; ILO, *ILO Monitor: COVID-19 and the world of work. Seventh edition*; Save the Children and UNICEF, *Impact of COVID-19 on multidimensional child poverty*. Illustrations: Notionpic; anatolir via Canva.com.

IMPLEMENTATION STRATEGY

The Programme builds on the two-stream strategy of the ILO's Flagship Programme on Social Protection, for greater synergies with other projects and consolidation of results and impact.



“ We foster closer cooperation between civil society organizations and trade unions at the national level so that they can structurally and meaningfully engage with government authorities and programme partners to help determine priorities and generate broad support for public policies.

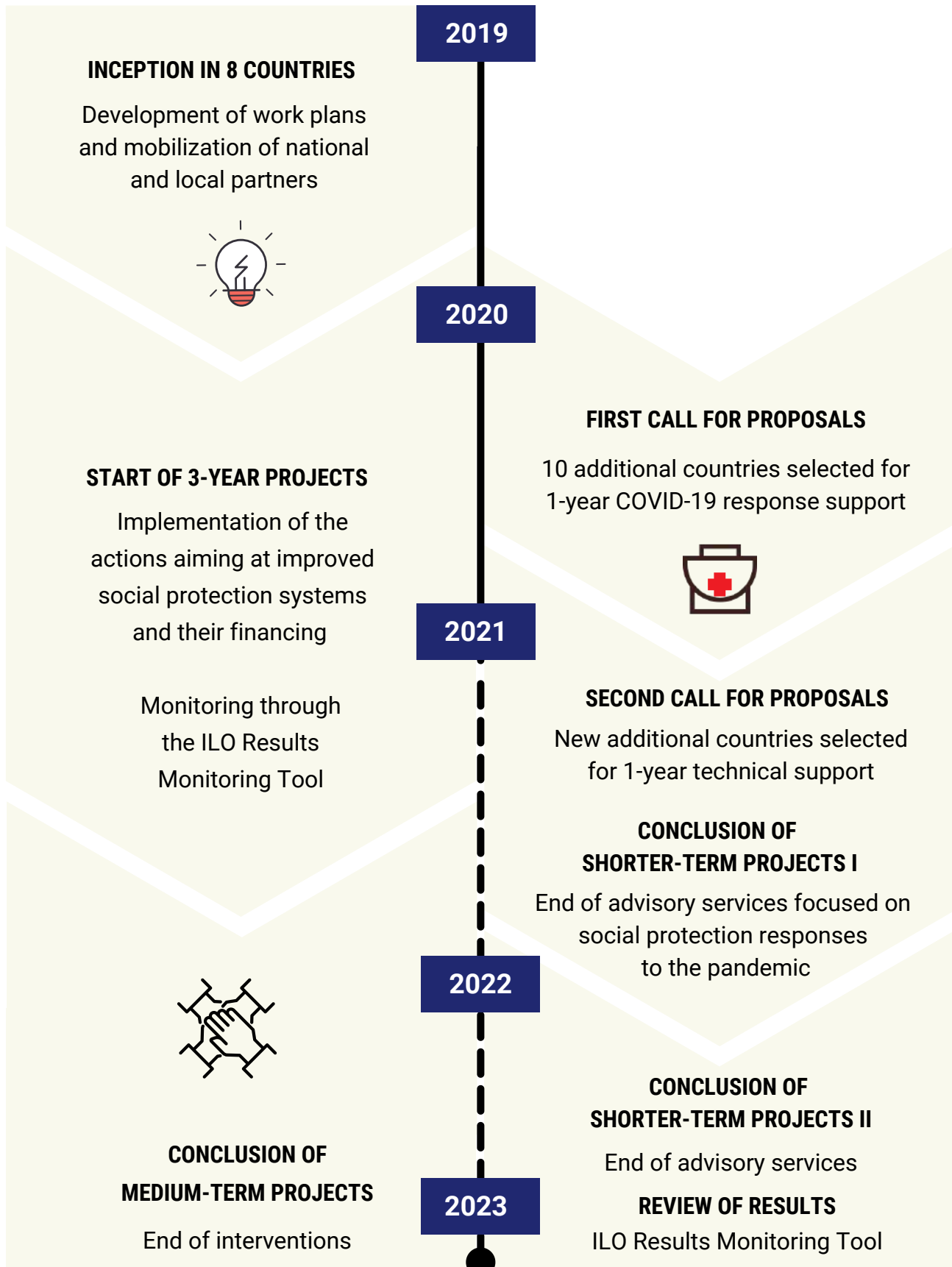


Bart Verstraeten
Director General
WSM (We Social Movements)
On behalf of the GCSPF



© ILO / Crozet

PROGRAMME TIMELINE



PARTNER COUNTRIES

THREE-YEAR PROJECTS (2020–2023)

Technical assistance, capacity building and policy-oriented research to strengthen social protection systems and their financing, and improve public finance management



Angola



Burkina Faso



Cambodia



Ethiopia



Nepal



Paraguay



Senegal



Uganda

ONE-YEAR PROJECTS (2020–2021)

Advisory services to improve the delivery and financing of social protection in response to the COVID-19 pandemic, and build long-term social protection systems



Bangladesh



Cabo Verde



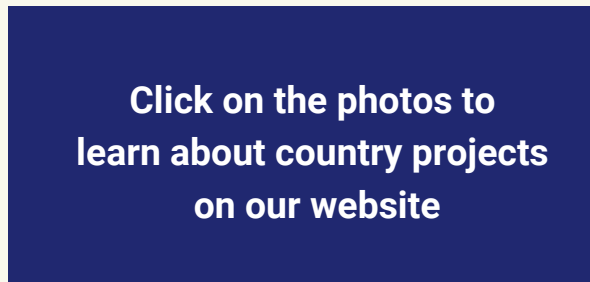
Côte d'Ivoire



Ecuador



Malawi



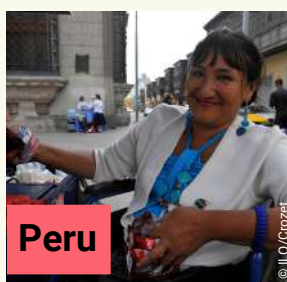
Click on the photos to learn about country projects on our website



Myanmar



Nigeria



Peru



Sri Lanka



Togo

IMPROVING SYNERGIES BETWEEN SOCIAL PROTECTION AND PUBLIC FINANCE MANAGEMENT

2020-2023



Learn more and contact us:
socialprotection-pfm.org
sp-pfm@ilo.org



Sign up for the programme newsletter and stay up to date.

This publication was produced with the financial support of the European Union.
Its contents do not necessarily reflect the views of the European Union.



Funded by the
European Union



International
Labour
Organization



Global Coalition for
SOCIAL PROTECTION FLOORS