

Supplement to
Brief Communication: Further Summer Speedup of Jakobshavn Isbræ

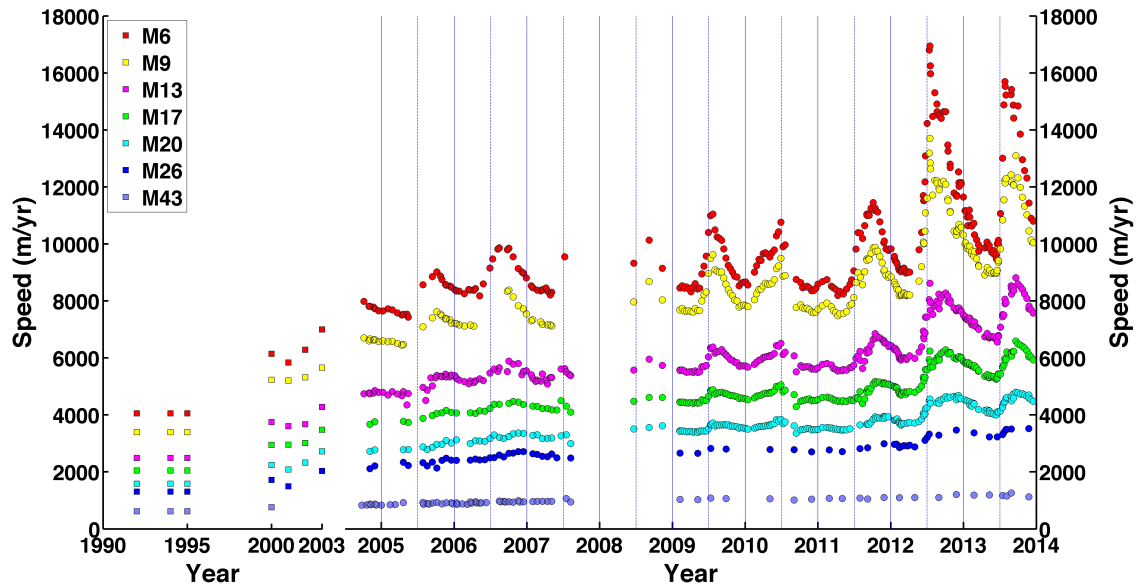


Figure S1. Plots of speed through time for the main branch of Jakobshavn Isbræ determined from TerraSAR-X data collected from 2009 to 2013, RADARSAT data collected from 2000, and 2004 to 2007, LandSAT data collected from 2001 to 2003, and ERS-1/2 data collected from 1992 to 1995 (Joughin, Abdalati, & Fahnestock, 2004; Joughin et al., 2008; 2012). The colour circles (M6-M43) show the speed at several points along the glaciers main trunk at the locations shown in Figure 1 (M43 location not shown; see Joughin et al., (2008)). Each point's numerical designation (e.g., M6) gives the approximate distance in kilometres from glacier terminus in late summer 2003.

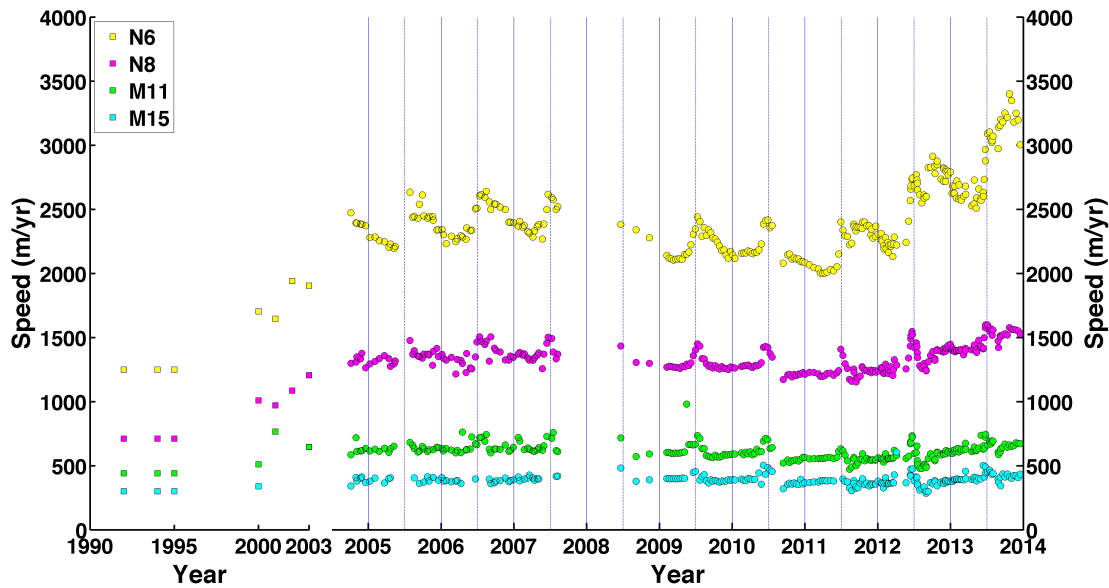


Figure S2. Plots of speed through time for the north branch of Jakobshavn Isbræ determined from TerraSAR-X data collected from 2009 to 2013, RADARSAT data collected from 2000, and 2004 to 2007, LandSAT data collected from 2001 to 2003, and ERS-1/2 data collected from 1992 to 1995 (Joughin et al., 2004; 2008; 2012). The colour circles (N6-N15) show the speed at several points along the glaciers main trunk at the locations shown in Figure 1. Each point's numerical designation (e.g., N6) gives the approximate distance in kilometres from glacier terminus in late summer 2003.

- Joughin, I., Abdalati, W., & Fahnestock, M. (2004). Large fluctuations in speed on Greenland's Jakobshavn Isbræ glacier. *Nature*, 432(7017), 608–610. doi:10.1038/nature03130
- Joughin, I., Howat, I. M., Fahnestock, M., Smith, B., Krabill, W., Alley, R. B., et al. (2008). Continued evolution of Jakobshavn Isbrae following its rapid speedup. *Journal of Geophysical Research-Earth Surface*, 113, F04006. doi:10.1029/2008JF001023
- Joughin, I., Smith, B. E., Howat, I. M., Floricioiu, D., Alley, R. B., Truffer, M., & Fahnestock, M. (2012). Seasonal to decadal scale variations in the surface velocity

of Jakobshavn Isbrae, Greenland: Observation and model-based analysis. *Journal of Geophysical Research*, 117(F2), F02030. doi:10.1029/2011JF002110