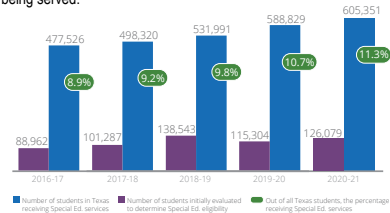


## SPECIAL EDUCATION

## MORE STUDENTS RECEIVE SERVICES

The Texas Education Agency adopted a strategic plan for special education in 2018. A major focus of the plan was to improve the ability of public schools to identify students in need of special education supports and services. The focus has made a major difference for Texas students, as far more students are being served.



## STUDENTS RECEIVING DYSLEXIA SUPPORTS

As part of TEA's strategic plan for special education, improvements in dyslexia identification practices have been underway for years. These efforts were significantly bolstered starting with the 2019-20 school year, when school systems began receiving a new funding allotment based on the number of dyslexic students they serve, thanks to the passage of HB 3.\*

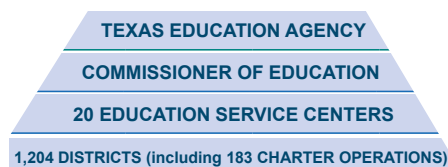


\*Enrollment for 2020-21 - (Reported April 2021. Source: U.S. Department of Education, ED Facts Data Warehouse (EDW): "IDEA Part B Child Count and Educational Environments Collection," 2019-20. From file specifications (FS) 002 and FS 009.)

Evaluations for 2020-21 - (Reported in final data set from TEAL SPP 11 and SPP 12 - to be reported in the FFY 2020 SPP/APR February 1, 2022).

\*\*PEIMS Collection 2015-2021

## ORGANIZATIONS



1,204 DISTRICTS (including 183 CHARTER OPERATIONS)

District Size	Enrollment (Fall 2020)	Number of Districts/Charters	% of All Students
50,000 & Over	1,501,741	19	27.96%
25,000-49,999	1,239,041	35	23.07%
10,000-24,999	979,698	62	18.24%
5,000-9,999	547,281	75	10.19%
3,000-4,999	355,316	91	6.61%
1,600-2,999	284,845	131	5.30%
1,000-1,599	197,595	155	3.68%
500-999	159,401	223	2.97%
Under 500	106,668	413	1.98%
<b>Total</b>	<b>5,371,586</b>	<b>1,204</b>	<b>100.00%</b>

8,845 CAMPUSES (INCLUDING 831 CHARTERS)

Campus Type	Enrollment (Fall 2020)	Number of Campuses	% of All Students
Elementary School	2,451,952	4,854	45.65%
Elementary /Secondary	215,608	503	4.01%
Middle School	936,065	1,381	17.43%
Junior High School	234,814	320	4.37%
High School	1,533,147	1,787	28.54%
<b>Total</b>	<b>5,371,586</b>	<b>8,845</b>	<b>100.00%</b>

## PERSONNEL

	Full-Time Equivalents	Avg. Base Salary
Teachers	369,389	\$57,641
Campus Administration	22,378	\$83,423
Central Administration	8,657	\$109,661
Professional Support	79,049	\$68,014
<b>Total Professionals</b>	<b>479,475</b>	<b>\$61,494</b>
Paraprofessionals	79,391	\$22,215
Auxiliary Staff	186,946	\$28,812
<b>Total Staff</b>	<b>745,813</b>	<b>\$49,120</b>

	Full-Time Equivalents	% of Total
<b>Gender</b>		
Females	281,388	76.18%
Males	88,000	23.82%
<b>Ethnicity</b>		
African American	41,184	11.15%
American Indian or Alaska Nat.	1,260	0.34%
Asian	6,657	1.80%
Hispanic/Latino	104,991	28.42%
Native Hawaiian/Other Pacific	618	0.17%
White	210,355	56.95%
Two or More Races	4,321	1.17%
<b>Experience</b>		
First Year	24,879	6.74%
1-5 years	102,754	27.82%
6-10 years	74,854	20.26%
11-20 years	107,645	29.14%
20+ years	59,255	16.04%

\*Note: Professionals with Education Service Center or Shared Services Agreements are not reflected in categories.

## TEACHER INCENTIVE ALLOTMENT (TIA)

### HB 3 TEACHER INCENTIVE ALLOTMENT (2020-21)

#### TEACHER SUMMARY

**4,617** Texas teachers earned a designation.

**\$43,046,976** TIA Funding (2020-21)

- 2,774** Recognized designated teachers  
Average funding per teacher: **\$6,181**
- 1,323** Exemplary designated teachers  
Average funding per teacher: **\$12,576**
- 520** Master designated teachers  
Average funding per teacher: **\$22,537**

**429** National Board teachers earned a recognized distinction.  
**\$1,533,259** TIA National Board Funding (2020-21)

#### DISTRICT SUMMARY

**127** Total participating districts

**189,620** Texas students taught by a designated teacher

**80%** Rural district acceptance rate

## STRATEGIC PRIORITIES

### TEA STRATEGIC PRIORITIES AND ENABLERS

Every child, prepared for success in college, a career or the military.

**Strategic priorities**

- Recruit, support and retain teachers and principals
- Build a foundation of reading and math
- Connect high school to career and college
- Improve low-performing schools

**Enablers**

- Increase transparency, fairness and rigor in district and campus academic and financial performance
- Ensure compliance, effectively implement legislation and inform policymakers
- Strengthen organizational foundations (resource efficiency, culture, capabilities, partnerships)

tea.texas.gov | TXschools.gov

tea.texas.gov/coronavirus

TexasAssessment.com

Information contained in this pamphlet was compiled from data provided by the PEIMS collection, the TAPR, the TEA Payment Report, and the General Appropriations Act.

For more information, contact:

Texas Education Agency  
Division of Communications: (512) 463-9000  
www.tea.texas.gov/communications/pocket-edition/

For additional copies of this brochure, visit:  
www.tea.texas.gov/publications/info/

January 2022

## POCKET EDITION

## 2020-21 Texas Public School Statistics

Texas Education Agency  
Mike Morath  
Commissioner of Education



## The Texas public school system consists of:

- 1,204 school districts and charters
- 8,845 campuses
- 369,389 teachers
- 5.371 million students

## STUDENTS BY DEMOGRAPHIC GROUP

	# of Students	% of Total	% Change (2020)
African American	681,401	12.7%	-1.7%
American Indian or Alaska Nat	18,755	0.3%	-6.5%
Asian	254,163	4.7%	1.5%
Hispanic/Latino	2,840,982	52.9%	-2.0%
Native Hawaiian/Other Pacific	8,271	0.2%	-2.5%
White	1,424,251	26.5%	-4.0%
Two or More Races	143,763	2.7%	3.6%
<b>Total</b>	<b>5,371,586</b>	<b>100.0%</b>	<b>-2.2%</b>
Economically Disadvantaged	3,233,417	60.2%	-2.3%
English Learners	1,108,883	20.6%	-0.4%

## STUDENTS BY GRADE

	# of Students	% of Total	% Change (2020)
Early Education	20,991	0.4%	-18.9%
Pre-kindergarten	197,093	3.7%	-20.9%
Kindergarten	361,349	6.7%	-5.9%
Grade 1	381,403	7.1%	-2.6%
Grade 2	380,122	7.1%	-2.2%
Grade 3	381,135	7.1%	-2.7%
Grade 4	385,364	7.2%	-3.7%
Grade 5	395,649	7.4%	-5.2%
Grade 6	414,357	7.7%	-2.0%
Grade 7	421,347	7.8%	-0.5%
Grade 8	422,505	7.9%	2.7%
Grade 9	436,523	8.1%	-2.8%
Grade 10	420,705	7.8%	3.4%
Grade 11	388,443	7.2%	3.0%
Grade 12	364,600	6.8%	2.9%
<b>Total</b>	<b>5,371,586</b>	<b>100.0%</b>	<b>-2.2%</b>

\*Note: Number of Students from 2020-2021 PEIMS Enrollment Report

## COMPLETION GRADES 9-12 (CLASS OF 2020)

	Graduated	Rec'd TxCHSE*	Cont'd H.S.	Dropped Out (4-yr.)
African American	87.0%	0.4%	4.8%	7.8%
American Indian	86.3%	0.5%	5.0%	8.2%
Asian	96.7%	0.1%	1.9%	1.4%
Hispanic	88.6%	0.3%	4.6%	6.5%
Pacific Islander	89.2%	0.5%	5.2%	5.1%
White	94.0%	0.5%	2.4%	3.1%
Two or More Races	91.1%	0.6%	3.8%	4.4%
Special Ed	78.9%	0.3%	12.7%	8.2%
Econ. Disadv.	87.5%	0.4%	4.8%	7.3%
EL	78.2%	0.2%	7.1%	14.6%
<b>State</b>	<b>90.3%</b>	<b>0.4%</b>	<b>3.9%</b>	<b>5.4%</b>

\*Note: Texas Certificate of High School Equivalency.

## COLLEGE, CAREER and MILITARY READY (CLASS OF 2020)

	College, Career, and Military Ready	College Ready	Career/Military Ready	Approved Industry-Based Certification
African American	47.8%	36.4%	16.4%	8.5%
American Indian	56.0%	45.2%	16.1%	11.2%
Asian	85.5%	82.8%	15.1%	13.2%
Hispanic	60.3%	49.5%	20.5%	14.9%
Pacific Islander	51.0%	42.7%	13.8%	10.2%
White	70.6%	62.5%	17.3%	12.5%
Two or More Races	65.6%	58.3%	15.2%	10.6%
Special Ed	71.5%	11.0%	70.4%	8.3%
Econ. Disadv.	56.3%	44.4%	20.5%	13.9%
EL	44.8%	30.3%	19.8%	11.1%
<b>State</b>	<b>63.0%</b>	<b>53.4%</b>	<b>18.7%</b>	<b>13.2%</b>

\*Note: This information pulled from 2020-2021 TAPR

## STAAR PERCENT AT MEETS GRADE LEVEL OR ABOVE (ALL GRADES)

	All Subjects	Reading	Mathematics	Writing	Science	Social Studies
ALL STUDENTS	41.0%	45.0%	37.0%	30.0%	44.0%	49.0%
African American	29.0%	33.0%	23.0%	20.0%	30.0%	38.0%
American Indian	41.0%	43.0%	37.0%	30.0%	44.0%	52.0%
Asian	73.0%	73.0%	74.0%	63.0%	76.0%	77.0%
Hispanic	33.0%	36.0%	28.0%	21.0%	34.0%	41.0%
Pacific Islander	41.0%	44.0%	36.0%	32.0%	45.0%	50.0%
White	57.0%	60.0%	54.0%	43.0%	62.0%	64.0%
Two or More Races	50.0%	54.0%	45.0%	38.0%	54.0%	58.0%
Econ. Dis.	29.0%	33.0%	26.0%	19.0%	31.0%	37.0%

## STAAR PERCENT AT MEETS GRADE LEVEL OR ABOVE (ONLY END OF COURSE EXAMS)

	English I	English II	Algebra I	Biology	U.S. History
ALL STUDENTS	50.0%	57.0%	41.0%	55.0%	69.0%
African American	37.0%	45.0%	27.0%	41.0%	56.0%
American Indian	50.0%	59.0%	41.0%	56.0%	73.0%
Asian	82.0%	85.0%	79.0%	86.0%	90.0%
Hispanic	42.0%	50.0%	33.0%	45.0%	62.0%
Pacific Islander	55.0%	56.0%	40.0%	58.0%	71.0%
White	68.0%	73.0%	57.0%	74.0%	84.0%
Two or More Races	63.0%	70.0%	50.0%	67.0%	79.0%
Econ. Dis.	38.0%	45.0%	30.0%	42.0%	58.0%

## ACCOUNTABILITY

Due to the COVID-19 pandemic, all districts and campuses were labeled *Not Rated: Declared State of Disaster* for 2021. Without accountability ratings, we are unable to determine which districts/campuses improved and which would benefit from added supports.

## KINDERGARTEN READINESS

Data Not Available. The state is transitioning to a new measure of kindergarten readiness as part of HB 3, passed in 2019. Data on kindergarten readiness will be available again in 2022.

## TOTAL PUBLIC EDUCATION SPENDING (FY 2020)

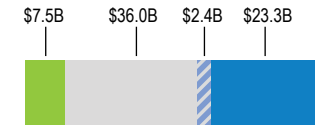
## TOTAL FUNDING (BILLION)



## TOTAL FUNDING

**\$69,282,814,579**

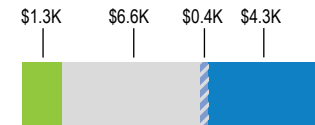
## TOTAL FUNDING SNAPSHOT



## PER STUDENT FUNDING

**\$12,645**

## PER STUDENT FUNDING SNAPSHOT



## STUDENTS BY PROGRAM

	Number of Students	% of Total	% Change from 2020
Bilingual/ESL	986,990	18.4%	-1.14%
Career & Technical Education	Data not available for 2020-21	%	%
Gifted & Talented Education	443,849	8.3%	-0.08%
Special Education	605,043	11.3%	2.90%