

britto-patterned pumpkin



materials needed:

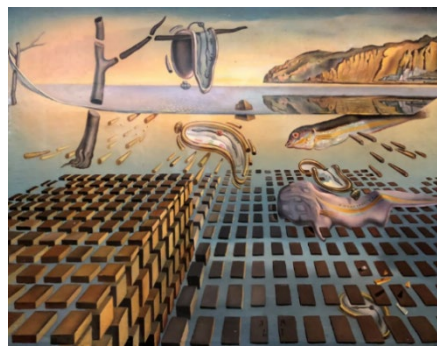
white painting paper, tempera paint in orange, yellow, white and black, paint brushes, water cup, paper towels, paint plates, pencils and erasers

how to do it:

1. Using a pencil, lightly draw a pumpkin.
2. On a paper plate, squeeze small amounts of orange, yellow, and white tempera paint. Experiment with mixing colors. What happens when you add a bit of orange to yellow? How about when you add some orange to white?
3. Use your newly mixed colors to fill in your pumpkin and your background. Make sure to cover all the white spaces. Allow the pumpkin to dry for a few minutes.
4. Squeeze black paint onto your paper plate. Outline your pumpkin with black paint.
5. Using your black paint and different shades of orange, carefully add patterns to your pumpkin and/or the background. **A pattern is shapes, lines, or colors that repeat.**

how this art relates to dalí and britto:

Romero Britto is a Brazilian artist who combines **pop art** and **graffiti** in his artwork using bright colors and patterns. Salvador Dalí and Britto both use patterns in their paintings. In Dalí's *Disintegration of the Persistence of Memory*, he uses two different patterns. Can you find both? Create your own pattern to show how you feel!



Romero Britto
Back In Time, 2015
Acrylic on canvas

Salvador Dalí
The Disintegration of the Persistence of Memory, 1952-54
Oil on canvas

holiday card resist painting



materials needed:

9x12" watercolor paper, crayons, watercolor paint, water cups, brushes, pencils, erasers

how to do it:

1. Place the paper on the table and fold horizontally.
2. Use a pencil to lightly trace a design from a template or sketch a few holiday symbols on the front of the card. What symbols do you see during the holiday season?
3. Once children are happy with their sketch, have them trace over their drawing with a crayon. Press the crayon firmly onto the paper for the resist to work properly.
4. After tracing the drawing with crayons, begin applying watercolor paint around or on top of their drawing. **The crayon will resist the watercolor paint, repelling it away.**
5. Allow to dry, fold horizontally and enjoy.

how this art relates to dalí:



Dalí worked with Hallmark in 1948 on a set of Christmas cards. *Christmas Tree of Butterflies* (1960) is one card from the set. He said, "The tree stands on the great, bare Spanish plain, which represents—as it does in other paintings—timelessness and eternity. Surely Christmas is the essence of the timeless and the eternal. The two little figures below are my mother, indicating the tree with her butterfly scepter of spiritual beauty and love, and myself as a boy delighting in having her show it to me."

Salvador Dalí, *Christmas Tree of Butterflies*, 1960, watercolor