

NEWS BULLETIN

AN ASSOCIATION OF MEN



OF THE MOLES

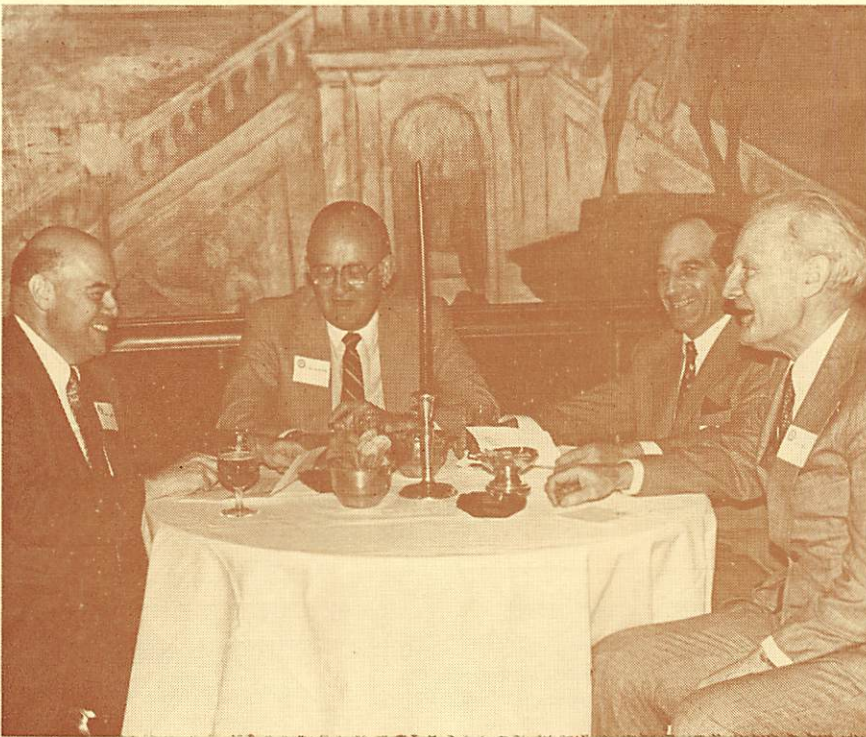
ENGAGED IN HEAVY CONSTRUCTION

**HOLING**

**THROUGH**

JULY, 1982

## ANNUAL BUSINESS MEETING and DINNER



Four of the six new Officers installed at the Annual Business Meeting & Dinner held at The New York Hilton in New York City on May 5, 1982. Left to right. NORMAN A. NADEL, President — JOHN D. SAUNDERS, First Vice-President — CHARLES E. MERGENTIME, Second Vice-President and JACK T. WALLE, Secretary. The other Officers, not included in the photo, are: JAMES C. ARTIMAGE, Treasurer and HERBERT FLETCHER, Sergeant-at-Arms.

**A**FTER the traditional cocktail hour and prime rib dinner, Norman A. Nadel received the gavel from retiring President, Salvatore V. DeSimone during the brief Business Meeting which included reports from the Secretary, Treasurer and Committee Chairmen. Retiring President, DeSimone introduced the new members elected at the April 6th meeting of the Executive Committee. Fourteen of the seventeen were present (see bios on page 4 and 5). The traditional Moment of Silence was observed for those members who had passed away since the last Annual Business Meeting.

When the new President, Norman Nadel was handed the gavel, symbol of Office, by retiring President Sal DeSimone, Norman said, "Sal, it's not going to be easy to fill those shoes!"

*Thank you for all you have done for The Moles". Sal in turn responded addressing the members for the last time as President. "I can't tell you how*

*(Continued on Next Page)*

## CLAMBAKE



THURSDAY, AUG. 5, 1982

COLONIE HILL  
HAUPPAUGE, L. I., N. Y.



REGISTRATION

11 A.M. to 6 P.M.

LUNCH

11:30 A.M. to 2 P.M.

WHEEL OF FORTUNE  
DRAWINGS

2:30 and 4:30 P.M.

OUTDOOR GAMES

1 P.M. to 5 P.M.

SWIMMING POOL and  
HEALTH SPA

ALL DAY

DINNER

SERVED PROMPTLY AT 6:30 P.M.

PRIZE AWARDS

AFTER DINNER



ENTERTAINMENT

8:30 to 9:30 P.M.

By

THE DURNING STRING BAND  
"PHILADELPHIA MUMMERS"

## ANNUAL MEETING

(Continued from Page 1)

*much I have appreciated the opportunity you have provided me to serve The Moles. I have so many people to thank for making it a wonderful experience for me: the Officers, Trustees, Committee Chairmmen, and all of you. It has been a real pleasure to represent you. One person I have left out and I think everyone knows who I mean. She has given encouragement, assistance, and all kinds of information all the way along. Arline Gallagher thank you!"*

President Nadel greeted the members thanking those who voted for him and telling them he would do his best to do a good job. After congratulating the new members, President Nadel took time out to thank George Flay for proposing him to be a member of The Moles and Ed Armitage for encouraging him to become active in The Moles.

## President Appoints Committees

President, NORMAN A. NADEL has announced the appointment of the following members to the five standing committees for the ensuing year. They are: Membership Committee — Irv R. Huie (Perini Corp.) Chairman; J. Rich Steers, Jr. (J. Rich Steers, Inc.) Vice Chairman; Charles M. Aiken (Raymond International Builders, Inc.) Rockne E. Burns (S. J. Groves & Sons Co.) Frederick J. Clarke (TAMS) John G. Dillon (Bechtel) Bernard A. Grand (Slattery Assoc.) David G. Hammond (Daniel, Mann, Johnson & Mendenhall) Robert G. Lenz (Moretrench American Corp.) James A. Leonard, Jr. (Walsh Construction Co.) — Program Committee — Richard J. Redmond (MacLean Grove & Co.) Chairman; Roger J. Ludlam (S. J. Groves & Sons Co.) Vice Chairman; Kevin B. Crimmins (Thomas Crimmins Contracting Co.) John F. Donohoe (Moretrench American Corp.) Eugene J. Fulam (Twin County Steel) Frank Gregory (Warren George, Inc.) Thomas E. Gunn (Bethlehem Steel) Allen K. Hammond (Hodge & Hammond, Inc.) Daniel F. Meyer (Morrison-Knudsen Company Inc.) Charles B. Molineaux, Jr. (Perini Corp.) Alfred G. Ward (Walsh Construction Co.) — Finance Committee — Victor B. Hertslet (Riggs Distler & Co., Inc.) Chairman; Carl E. Buckley (Buckley, Treacy, Schaffel, Mackey & Abbate) Elmer B. Isaak (URS Company) S. E. Liles, III (Tidewater Construction Co.) Carl E. Petrillo (Yonkers Contracting Co.) Elmer A. Richards



Dudley A. Saunders, Treasurer of The Moles from May 1, 1978 to April 30, 1982 receives hand engraved and illuminated citation of appreciation for his dedicated service from Salvatore V. DeSimone, 1981 Moles' President.

• The Board of Directors of Guy F. Atkinson Company of California has recently announced that THOMAS W. HALLIGAN has been elected to the position of President and Chief Operating Officer. TOM will be headquartered at South San Francisco, California. Within the Walsh Division of Atkinson, JAMES A. LEONARD has been promoted to Vice President of Construction. JAY is headquartered in Darien, Connecticut.

### PRESIDENT APPOINTS COMMITTEES

(Mueser, Rutledge, Johnston & DeSimone) — Education Committee — Melvin Febesh (Urban Foundation Co.) Chairman; Edmund M. Burke (Mueser, Rutledge, Johnston & DeSimone) Vice Chairman; Joseph J. Diehl (The Mergentime Corp.) John G. Donargo (Spencer, White & Prentis Inc.) Andrew J. Ely (MacLean Grove & Co.) Robert C. Friberg (Andrew Catapano Co.) Jerome P. Hill (S. J. Groves & Sons Co.) Robert J. Hill (Parsons, Brinckerhoff, Quade & Douglas) Rudi vanLeeuwen (Slattery Associates Inc.) — Publicity Committee — Gerard J. Carty (Walsh Construction Co.) Chairman; Stuart H. Bartholomew (Fru-Con Corp.) Vice Chairman; Tony Berman (Berman, Paley, Goldstein & Berman) Joseph DiCarolis (Schivone Construction Co.) Edwin L. Jones, Jr. (J. A. Jones Construction Co.) Francis J. McCarthy (Hercules Inc.) Fred A. Reif (Perini Corp.) George Ziegler (N.Y.C. Transit Authority).

## A.S.C.E. Holds Spring Convention

Mole members were prominent at the Spring Convention of the American Society of Civil Engineers which took place in Las Vegas the week of April 26th. Among those attending and participating in various sessions were former ASCE President, ART FOX; AL MAEVIS, BERNIE MONAHAN and GERRY CARTY, all members of the Executive Committee of the Construction Division; TERRY McCUSKER and DAVE HAMMOND, present and future Chairman of the Tunneling and Underground Committee as well as Committee Members, DELON HAMPTON and BOB O'NEIL; also in attendance were STAN MERJAN and HAL HUNT.

The Business Roundtable presented a status report at the Convention on the "Construction Industry Cost Effectiveness Project". This is a timely topic and any Mole member interested in receiving copies of the reports as they are completed and published may write to the Business Roundtable, 200 Park Avenue, New York, N.Y. 10166.

## A MOMENT OF SILENCE



JOHN A. McWHORTER died of a heart attack on April 19, 1982 while on business in the Republic of Panama. He was 56.

Mr. McWhorter was a partner in the Washington law firm of King & King and a specialist in the public contract field. A resident of Washington, D.C., John was born in Greensboro, Georgia. He earned undergraduate and law degrees at Washington & Lee University. He moved to Washington in 1950 as a lawyer for the Army working for the Corps of Engineers and in Europe. He joined King & King in 1955. A year later he earned a master's degree at George Washington University law school. King & King specialize in legal problems of the construction industry and have represented heavy construction contractors for 115 years.

John was active in the American Bar Association and helped draft its Model Procurement Code, which has been adopted by many state and local governments. He was a former chairman of the ABA's public contracts section and was a member of the Legal Remedy Study Group of the Commission on Government Procurement. He had been chairman of the Court of Claims Committee of the Bar Association of the District of Columbia.

He is survived by a brother, Sanders McWhorter; and two sisters, Ann Palmer and Winifred Nunn.

RICHARD J. HILL, JR., died on April 24, 1982 at La Jolla, California. He was 81.

A 1922 graduate of the University of Illinois, for many years, he served the construction industry in the bonding and surety business. During the period from 1942 until he retired in 1973 he was Vice President and Director of the S.A. Healy Company; and was involved in such notable projects as the Neversink Dam, Bowery Bay Tunnel, excavation for the Raven Rock Project, and a portion of the Washington, D.C. subway.

A long time resident of Scarsdale, New York, he moved to Rancho Santa Fe, California in 1970 and upon retirement in 1973 he moved to La Jolla.

He is survived by his wife, Neville; two sons, Richard III and James; and five grandchildren.

---

• Cover story in Engineering News-Record's June 3, 1982 should be of interest to some Mole Members. Entitled "Jones-Holzmann: An International Marriage That Works" it portrays the expansion of Mole affiliate, J. A. Jones Construction Co. since its acquisition by Philipp Holzmann AG, a German construction company and one of Europe's largest contractors. According to EN-R, EDWIN JONES, JR., Chairman and President of J. A. Jones notes that they have been encouraged to grow from within as a result of Holzmann as the parent company. They re-entered the bridge construction field, bidding and winning contracts for the Red River bridge in Boyce, La. (\$12-million) and restoration of the floating Hood Canal bridge near Seattle, Washington (\$60-million).

---

• New member, ROBERT L. POLVI, Vice President and Manager of International Operations and Division Construction for Bechtel's Hydro and Community Facilities Division was recently cited by EN-R as "serving the best interests of the construction industry last year". The plaque was presented by EN-R's publisher, Mole Member, DAVID J. McGRATH.

## John Saunders honored by U.J.A.

JOHN D. SAUNDERS, President, Slattery Associates, Inc., was honored by the Heavy Construction Division of the United Jewish Appeal Federation of Jewish Philanthropies at a Dinner held in the Georgian Ballroom of the Sheraton Centre Hotel on June 8, 1982. BERNARD RICHARDS, Chairman of the Board, made the presentation. Below are a few excerpts from Mr. Richard's presentation remarks.

*"During the last decade, our geography has spread from a local contractor to a national company working in many large metropolises and our family of companies has grown to include Grow Tunneling Corp., H. Sand & Co., and Underpinning & Foundation."*

*"By religion, temperament, education and family background, our roots could not have been more diverse but what we share in common is far more significant: It is our continuous hope, dream and aspiration to build the best construction company that we are capable of creating while at the same time treating people both within and without the company with dignity, compassion and fairness. And — for John's important role in this mission, I am very grateful".*

*"Those of us who know John as I do, know that he has won the respect of the industry, the engineering profession and the labor movement by his integrity, his diligence, his fairness and his wonderful sense of construction."*

*"John is descended from a construction family — his father was one of the founders and governing Officers of the Arthur A. Johnson Construction Co., and John and his brothers were literally weened from childhood on cranes and bulldozers. John shares with his brother, Dudley, a great sense of how a job should be built and is blessed with a deep perception of special relationships."*



Left to right: Donald G. Armstrong, Donald O'Hare, Claes Bjork, Victor J. Scaravilli, Donald S. Miner, John P. Flaherty, Leo M. Halley.

## NEW MEMBERS

Seventeen new members were elected at the April 6th Executive Committee Meeting. Alphabetically, they are:

**DONALD G. ARMSTRONG** is Group Vice President of Raymond International Builders, Inc., heavy construction projects. Don earned a B.C.E. in 1959 from Cornell University and in 1960 received an M.B.A. Since then in addition to his civilian experience, he was in the U.S. Army Construction Battalion engaged in air field construction. He has spent his entire career except for his service period, with the Heavy Construction Group of Raymond. Along with his other duties he is the Joint Venture Representative on the Baltimore Tunnel project for Raymond. His experience is world-wide having been in responsible charge of a Marine Terminal built for Aramco in Saudia Arabia and an extremely complex foundation project in Italy.

**CLAES G. BJORK** is Vice President in charge of operations for Skanska (U.S.A.) Inc. After earning his Master's Degree in Civil Engineering from Trollhattan, Sweden in 1967, Claes worked as a Superintendent on tunnels and other underground work in Sweden. During the period from 1970/72 he was Project Manager for Skanska Cementgjuteriet on marine works for Ringhals Nuclear Power Plant in Sweden. He came to the United States in 1972 to work in Joint Venture on subway tunnel work in New York and then in Washington,

D.C. In 1980 he was made Vice President of Skanska's U.S.A. operations, the position he now holds. He is a member of the British Tunneling Society and the Underground Space Association.

**WARREN M. BULLOCK** is a Vice President for Guy F. Atkinson Construction Company, headquartered in South San Francisco, California. Warren was born and educated in New Zealand and received a Bachelor of Civil Engineering Degree from Canterbury in 1954. Subsequently he held various engineering and construction positions in Canada, Australia and New Zealand. He has worked on difficult rock tunnel work and other underground construction as Project Manager. He joined the Guy F. Atkinson Company as Project Manager on their Botany Bay Project in Australia and later was transferred to the Walsh Division where he served as Project Manager on the Nine Mile II Nuclear Power Plant Project. His current position with Atkinson involves all activities for the firm including safety and labor relations.

**JOHN E. CHIAVERINI** is Senior Vice President of Perini Corporation's Western Operations headquartered in San Francisco, California. He has a Bachelor of Civil Engineering Degree from the University of Rhode Island which he earned in 1947. Jack's advance as Engineer, Supervisor, Manager, and Executive during over thirty years with Perini Corporation is identified with major, significant projects in the United States, Canada and South America; and include the St. Lawrence Seaway, the Chute des

Passes Power Project in Northern Quebec, the Calima Hydroelectric Project in Colombia and the Yuba River Delevopment Project in California.

**JOHN P. FLAHERTY** is President of The Edward C. Flaherty Corp., located in Long Island City, N.Y. The firm supplies construction equipment for the Industry in particular equipment for below street construction. John is a 1940 graduate of Hofstra University, Hempstead, N.Y. His over thirty year association with the heavy construction industry as a supplier has gained him a reputation as a competent, knowledgeable equipment expert.

**JOHN W. FOWLER** is Executive Vice President for Tidewater Construction Corporation. He has a Bachelor of Civil Engineering Degree from Clemson University which he earned in 1948. Tidewater has engaged in a series of challenging assignments in marine and heavy construction and John, in his over twenty five years with the firm, has played a key role in the successful accomplishments of a great many of these projects. A few of the notable construction projects John has been involved with for Tidewater are: Chesapeake Bay Bridge Tunnel and three offshore light stations for the U.S. Coast Guard, namely, Ambrose, Chesapeake and Diamond Shoals. John, for many years prior to being named Executive Vice President, was Tidewater's Chief Engineer and as such was responsible for the planning of construction methods, design of rigging and cofferdams, and design of marine structures.



Left to right: W. Bernard Pieper, John W. Fowler, John E. Chiaverini, Warren M. Bullock, Dominic A. Zarrella, Richard J. Halloran, Bart Spota.

RICHARD E. HALL is President of Underground Construction Co., Inc. The firm, headquartered in San Leandro, California is currently joint venturing in \$45 million MARTA contracts and subcontracts. In addition they have similar size contracts with the United States Bureau of Reclamation. They have completed work on WMATA, Washington, D.C., and BART in San Francisco. Dick Hall is a graduate of the University of California where he earned a Civil Engineering Degree in 1938. He is active in the Beavers and the Heavy Industrial Division of the national Associated General Contractors of America.

LEO M. HALLEY is Engineer of Design, in charge of design of all major work programs for all the Port Authority of New York and New Jersey facilities. Leo has thirty years of experience in both the design and execution of both heavy and building construction projects, the last twenty of which have been with the Port Authority. Specifically he has been involved in The George Washington Bridge Bus Station, the P.A. "T" Building at the 1964-65 World's Fair, all below grade contract construction for the World Trade Center, for which he was presented the Executive Director's Medal for Outstanding Contribution, and just prior to his transferral to his present position of expanded responsibility he was Project Manager for the \$160 million P.A. Bus Terminal Expansion. Leo has a Bachelor of Civil Engineering Degree from Manhattan College which he earned in 1951.

RICHARD J. HALLORAN is Executive Vice President of The Conduit & Foundation Corporation headquartered in Philadelphia, Pa. Richard follows in the footsteps of his father, Mole member, Harry Halloran. Coming from a family of construction people, he has long been exposed to the life of the contractor and engineer. He has a B.S. in Civil Engineering from Yale University which he earned in 1965. In his present position he has the overall responsibility for operations of the firm which is engaged in the construction of subways, hard rock underground utility tunnels, highways, bridges, treatment plants, pipelines and nearly every phase of heavy construction.

DONALD S. MINER is Assistant Vice President and Project Manager for The Mergentime Corporation's \$63 million cut and cover subway project in Philadelphia. Besides maintaining traffic during construction of a four track subway structure, this project entails underpinning four major structures including the 100 year old Masonic Temple as well as the 13 story City Hall Annex. Prior to that Don was Resident Engineer on MARTA's Civic Center Station & Avondale Yard in Atlanta, Georgia and Resident Engineer for DeLew Cather on the Second Avenue Subway in New York City.

JOHN W. MORRIS is Director of Operations for Royal Volker Stevin Group, an international construction organization. Jack was recently retired as Chief of Engineers, U.S. Army, Corps of Engineers, with the rank of Lieut.

General as a conclusion to 37 years of distinguished service. He was Engineering News-Record's Construction Man of the Year for his outstanding work on the Corps' Program in Saudi Arabia while Chief. He has been actively involved in the work of the International Commission on Large Dams; is a fellow in the American Society of Civil Engineers; a Past President of the Society of American Military Engineers; and a member of the National Society of Professional Engineers. He has also been elected to the National Academy of Engineering. He earned a Bachelor of Civil Engineering Degree from the U.S. Military Academy at West Point in 1943 and a Master's in 1948 from the University of Iowa.

DONALD P. O'HARE has been affiliated with Slattery for more than twenty five years on major projects in the New York area. Starting as a Surveyor he worked his way through the ranks to Superintendent of Construction on underground railway systems, bridges, foundations, sewage treatment plants, highways and various other phases of heavy construction. Although he gives full time and attention to his work at Slattery he still finds time to be active in community, church and political affairs. He is a Director for Flushing Hospital & Medical Center, St. Vincent's Hall, and the Catholic Youth Organization (CYO's 1980 Man of the Year) and a Trustee for St. Mel's R.C. Church. He is a former member of the Planning Board #7 in Queens, New York and former N.Y. State Committeeman 25th Assembly District.

(Continued on Page 6)

## NEW MEMBERS

(Continued from Page 5)

W. BERNARD PIEPER has been made Senior Executive Vice President of Brown & Root, Inc., after twenty five years with the firm. In this capacity he is in charge of all of this very large construction firm's operations which are in excess of ten billion dollars. His advancement through the Company from his hire after college has exposed him thoroughly to all phases of the construction and engineering industry both in the field and in the office. A few of the projects that Ber Pieper has had "hands-on" responsibilities include: docks and harbors, offshore structures, marine terminals, pipelines and a full range of oil and gas production facilities. He earned a Bachelor of Civil Engineering Degree from Rice University in 1954; and is a member of Tau Beta Pi, Sigma Tau, and Chi Epsilon, an engineering honor society.

ROBERT L. POLVI is Vice President, Hydro & Community Facilities Division of Bechtel Civil & Minerals, Inc., a part of the Bechtel Group. In this capacity he is in charge of all foreign and overseas construction performed by that division. He earned a Master's Degree in Civil Engineering in 1958 from Oregon State University and joined Bechtel shortly after. He has been in responsible charge of many construction projects, most recently as Project Manager for the King Khaled International Airport at Riyadh in Saudi Arabia. (see Feb. 19, 1981 ENR) During the period from 1970 through 1973 Bob was Project Superintendent on the Ludington Pumped Storage Project, the largest in the world, selected for the 1973 most outstanding Civil Engineering Achievement by the American Society of Civil Engineers.

VICTOR J. SCARAVILLI is President and Chief Executive Officer of S & M Constructors Inc., headquartered in Solon, Ohio. The firm, engaged in heavy construction, specializes in the construction of underground structures including subways, and vehicular, utility and sewer tunnels. In addition, a wholly owned subsidiary of S & M specializes in soil stabilization, auger piles and underwater structural repair. He earned a Civil Engineering Degree from Case Institute of Technology in 1953 and is a member of the ASCE, Ohio Society of Professional Engineers, National Society of Professional Engineers, the Beavers, and the Board of Overseers of Case Western Reserve University.

BART SPOTA is President of J.C. MacElroy Co., Inc., a supplier of hardware and other fabricated materials used in marine and heavy construction. Bart earned a Bachelor of Science Degree in 1972 from Rutgers University. His expertise in his particular field is well known and he is respected throughout the industry by the contractors doing business with him.

DOMINIC A. ZARRELLA is a partner in the consulting engineering firm of Mueser, Rutledge, Johnston & DeSimone headquartered in New York City. He has been with the firm for nearly thirty years and is expert in the field of difficult foundations and water front construction. Dom has a Bachelor of Civil Engineering Degree from Manhattan College which he earned in 1948.

---

## STUDENT AWARDS 1982

As a part of the Education Committee's continuing efforts to interest student engineers in the construction industry, each year, The Moles present a Student Award to each of the twenty schools, currently on The Moles' approved list who indicate a desire to participate. The Award, a certificate and one hundred dollars is given to a student in engineering whose academic achievement and enthusiastic application shows outstanding promise of personal development leading to a career in construction engineering and management.

The following students have been presented with the 1982 Award as this issue of Holog Through goes to press: Nicholas Burbelo - Rutgers University, George Cornish - Polytechnic Institute of New York, Steven D. Thorne - Rensselaer Polytechnic Institute, Chester Kaspszak - Fairleigh Dickinson University, John P. Oliver, III - Union College, James Hummel - Columbia University, and Frank A. Forte - SUNY at Farmingdale.

## Moles' Office to Relocate

• Effective August 1, 1982, The Moles' Office will have a new address and telephone number. Please make a note of it. Mailing address: P.O. Box 1389 Southampton, New York 11968. Phone Number: (516) 283-6322. All meetings of the Association will continue to be held in New York City as determined by the Executive Committee.

---

## Jim Slattery honored

JAMES M. SLATTERY was one of two recipients of the Cardinal's Committee of the Laity, 1982 Cardinal's Award. The Award was presented to Mr. Slattery by His Eminence, Terence Cardinal Cooke at the Second Annual Construction and Building Industry Award Dinner held on April 30, 1982 at The Waldorf Astoria Hotel. This Second Award Dinner and last year's event will have raised over \$500,000 in support of the charitable, educational and pastoral services of the Archdiocese of New York. The Construction and Building Industry is one of eleven divisions which the efforts of the Cardinal's Committee of the Laity are concentrated among. As important as his achievements in the world of construction, is Mr. Slattery's long record of civic, charitable and educational interests as well. Honored as Man of the Year by the Boys Club of Queens, on whose Board he has served for many years, he has also been honored for his activities at Iona College and Stevens Institute of Technology as well as the Federation of Jewish Philanthropies and St. Vincent's Hospital. The James M. Slattery Foundation has benefited scores of organizations of every description. In 1965, Jim received The Moles' Member Award for "outstanding achievement in construction".

## STUDENTS' DAY

On Friday, April 16th, The Moles' Education Committee were hosts to about 250 student engineers from twenty eastern colleges on the occasion of The Moles' annual students' day. They gathered bright and early at the Sports Park Gymnasium on Roosevelt Island where coffee and pastries, buns, etc., were served. Hard Hats and literature about the projects they would see during the day was distributed. Walter C. Fitzpatrick, Chief of Design for the City of New York Bureau of Water Supply gave an informative talk along with slides on the entire project of City Tunnel #3. The students then boarded the busses and were taken in groups to the two sites they were to visit, namely, Van Cortlandt Park and Roosevelt Island. At the Van Cortlandt Park site, students were taken down into the Main Tunnel and Valve Chamber in small groups where their guides explained the phases of work. Topside, there were guides to explain the concrete batching plant, hoisting equipment and miscellaneous items which go along with a project of this magnitude. At the Roosevelt Island Shaft, the same procedure was followed whereby small groups were taken down into the shaft, while others waiting their turn to go down, toured the plant area. Photos of the day appear on page 8.

---

• **JAMES T. DENTON**, member emeritus, retired Vice President and Director of Engineering of Geo W. Rogers Construction Corp., has been living in Charlottesville, VA for this past decade. During this period Jim had a few sad times in that he lost his youngest son, David and Jim's wife of 54 years, Mary also died. However, Jim tells us he has had some pleasant times too. His older son and his daughter-in-law have recently moved in with him from New Jersey. He has spent a few winters in Florida; had a couple of trips to Las Vegas; and has completely toured the state of Virginia which has quite a historical background. At 83 Jim is still driving his own car



1981 President, Sal DeSimone presents Edward G. Armitage with Life Membership (40 years).

• One of The Moles' most recent Honorary Members and principal speaker at the 1982 Award Dinner has relocated in Texas. **ARTHUR G. HANSEN** has been named chancellor of Texas A&M University system.

Dr. Hansen was picked by the Texas A&M Board of Regents to oversee a statewide, 43,000-student system which includes Texas A&M, Prairie View A&M, Tarleton State and Texas A&M at Galveston, as well as numerous state services. Among the services are the state agricultural experiment station and extension service, the state engineering experiment station and extension service, the Texas Transportation Institute, the state forest service and the Texas Veterinary Medical Diagnostic Laboratory.

---

and getting around locally. Jim was a very active Mole before his retirement having served as committee member, Trustee and Chairman of the Membership Committee. He was at almost all the functions and always enjoyed fraternizing with his colleagues at the Clambake and Award Dinner. He received his 25 Year certificate from The Moles in 1978.

• The Engineering foundation Conferences announces the Fourth International Conference on use of "Shotcrete for Underground Support" to be held in Paipa, Boyaca, Colombia, South America, September 5-11, 1982. The conference is co-sponsored by the American Concrete Institute and will feature visits to four construction sites in which shotcrete is being used for permanent or final lining of water tunnels in particular, and for other uses. For further information contact: Mole member, **TERENCE McCUSKER**, 847 Howard Street, San Francisco, CA. 94103; or the Engineering Foundation Conference, 345 East 47th St., N.Y. 10017.

---

• A recent issue of EN-R reported on a new bridge strengthening method developed by two Bucknell University professors, one of which is Mole Member, **BOB BRUNGRABER**. New method is used to rehabilitate old steel truss bridges by utilizing steel structural plates and shapes as reinforcing members. Upgrading work can be performed quickly and economically without taking existing structure out of service, thus adding new life to old structures.

## MTA reveals 5 year Capital Program

An unprecedented amount of money, over \$5 billion in the five-year period from 1982 through 1986, has been pledged to revitalize the New York City transit system.

Although the largest single amount of money will be spent to purchase new subway cars, large sums have been earmarked for major construction projects, such as rehabilitation of track, line equipment and line structures, signal modernization, construction of new and modernization of the existing bus depots, barn, shop and yard restoration, station modernization and power upgrading.

Aside from bus and subway car purchases, one of the major projects will be rapid transit shop and barn rehabilitation, with \$432 million marked for that purpose. Not only will existing facilities be overhauled, but expanded to facilitate subway car maintenance. The program calls for new heating, lighting, roofing, locker rooms and work areas.

In the Surface Division, \$308 million has been appropriated for bus depot rehabilitation and for replacement. Five old depots are scheduled to be replaced.

Track rehabilitation calls for \$365 million for replacement of running rails, third rails, ties and ballast. In addition, \$500 million has been allocated for the modernization of the signal system.

Line structures, such as columns, column footings, lateral bracing, cross girders, webs, stringers, and retaining wall structures will be replaced and/or restored where deteriorated. Over \$199 million has been appropriated for this purpose.

Next to trains and buses, the most visible part of the transit system to its passengers is stations. To rehabilitate the system's 465 stations, \$309 million has been earmarked. Station modernization calls for new lighting, improved security, new signage and major architectural improvements.

The amount of construction work planned for the subway and bus system is unparalleled, but essential.

When the work is completed, New York City and MTA will have taken the first step to restore its economic lifeline and provided efficient and economical transportation for its citizens.

## Students Day 1982

