

NEWS BULLETIN

AN ASSOCIATION OF INDIVIDUALS

HOLING



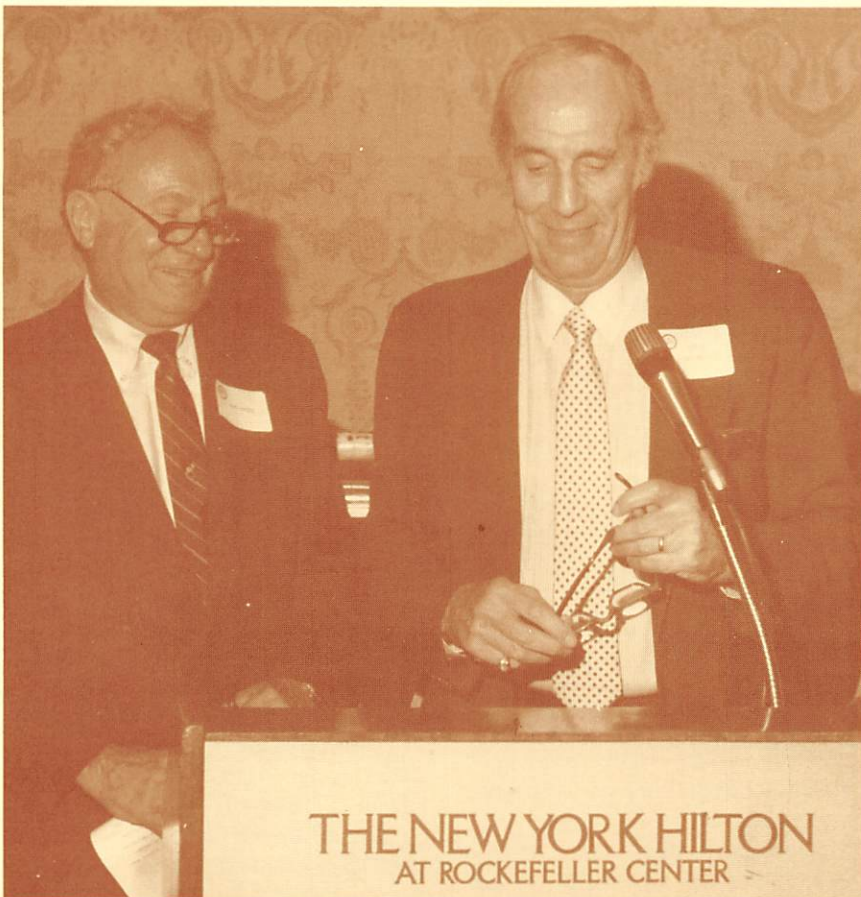
OF THE MOLES

ENGAGED IN HEAVY CONSTRUCTION

THROUGH

JULY 1986

ANNUAL BUSINESS MEETING



Retiring President, ROBERT S. GATES (left) relinquishes gavel to The Moles 1986/87 President, S.S. "STEVE" GREENFIELD.

TWO HUNDRED FORTY FIVE members were present for the Forty-Eighth Annual Business Meeting & Dinner held on May 7. This included 17 of the 19 new members elected to membership as of May 1. After the traditional cocktail hour and super dinner, retiring President, Robert S. Gates called the meeting to order. After greeting the members for the last time as President of The Moles, he expressed regrets which had been received from members who could not be present; called a "moment of silence" for those members who have passed away since the last Annual Business Meeting and introduced the new members elected at the April 1st Executive Committee Meeting. See pages 4 and 5 for brief bios on all 19.

(Continued on Next Page)

CLAMBAKE

~

**TUESDAY
AUGUST 5, 1986**

~

TRIVERS ISLAND
PELHAM, N. Y.

~

REGISTRATION
11 A.M. to 6 P.M.

LUNCH
11:30 A.M. to 2 P.M.

WHEEL OF FORTUNE
DRAWINGS
2:30 and 4:30 P.M.

OUTDOOR GAMES
1 P.M. to 5 P.M.

SOFTBALL GAME
3 P.M. to 5 P.M.

SWIMMING and TENNIS
ALL DAY

SURF & TURF DINNER
SERVED PROMPTLY AT 6:30 P.M.

PRIZE AWARDS
AFTER DINNER

ANNUAL MEETING

(Continued from Page 1)

President Gates presented Life Membership Certificates to: Louis F. Booth, Joseph B. Diamond and Gerard A. Neumann (see photos pages 3 and 8). Two other members who were not present also were cited with their 40 year Life Membership, namely, C. Glenn Browning and Ralph L. Johnson.

After receiving the reports of the Treasurer; Secretary; and the several Committee Chairmen; President Gates introduced the new Officers and Trustees for the coming year. Starting with the Trustees who will be serving a three year term, he introduced Thomas R. Kuesel, Chairman of the Board, Parsons, Brinckerhoff, Quade & Douglas, Inc.; John J. Lennon, Executive Vice President, Geo. W. Rogers Construction Corporation; Robert G. Lenz, Chairman of the Board & Chief Executive Officer, Moretrench American Corporation; and Elmer A. Richards, Partner, Mueser Rutledge Consulting Engineers. He continued with the introduction of the new Officers who will serve from May 1, 1986 through April 30, 1987 as follows: Sergeant-At-Arms, P.A. "Eric" O'Neill, President, New England Foundation Co., Inc.; Secretary, Charles W. Edgar, Consultant; Robert C. Koch, Vice President, Yonkers Contracting Co., Inc.; Second Vice President, Gerard J. Carty, Vice President & Chief Engineer, Walsh Construction Company; First Vice President, Irving R. Huie, Senior Vice President, Group Executive, Heavy Operations, Perini Corporation; and President, S.S. "Steve" Greenfield, Chairman of the Board, Parsons, Brinckerhoff, Inc.

As the retiring President introduced the new President, he turned the gavel, symbol of Office, over to President Greenfield. One of President Greenfield's first duties was to present the retiring President with the traditional past president's pin and citation. The retiring President responded, *"being President of The Moles this past year is the highlight of my construction career"*. *"I would like to thank everyone for their support and especially Arline Gallagher for her help in getting me through this year as President"*. He thanked Steve Greenfield and wished him well in his year as President. Steve Greenfield, the new President, now addressed The Moles' assembly for the first time as President. He said, *"I feel pretty good!"* *"It is a personal pleasure and privilege to serve this fine organization"* *"It is also a singular honor as a*

PRESIDENT APPOINTS COMMITTEES 1986/87

AWARD COMMITTEE — Sherwood E. Liles, III, (Tidewater Construction Corporation) Chairman; G.W. "Bill" Gilfillan, (Morrison-Knudsen Company, Inc.) Vice Chairman. Members-at-Large, Jack J. Burke (Gardner Denver Mining and Construction) and Arthur J. Fox, Jr. (Engineering News-Record). In addition the Award Committee consists of the Officers, Trustees, Standing Committee Members, Past President and Recipients of the Member Award.

MEMBERSHIP COMMITTEE—Robert G. Lenz (Moretrench American Corp.), Chairman; Joseph J. Diehl, (Mergentime Corp.), Vice Chairman; Warren H. Anderson (Mueser Rutledge Consulting Engineers), Frank L. Flood, Jr. (Perini Corporation), Robert J. Hill (Parsons Brinckerhoff Construction Services, Inc.) Albert J. Maiorano (Walsh Construction Company), Gerard A. Neumann, Jr. (Spearin, Preston & Burrows, Inc.), Richard J. Redmond (MacLean Grove & Company, Inc.), John A. Rupich (Gates Construction Corp.), George B. Searle (IA Construction Corp.).

PROGRAM COMMITTEE — Roger J. Ludlam (S.J. Groves & Sons Co.), Chairman; Frank Gregory (Warren George, Inc.) Vice Chairman; William L. Acker, III (Acker Drill Co., Inc.), James C. Armitage (Armitage & Company), V. B. DiGiorgio (Urban Foundation Co., Inc.), John F. Donohoe (Moretrench American Corp.), A.J. Ely (MacLean Grove & Company, Inc.), Robert J. Jenny (Jenny Engineering Corp.), John L. Kolaya (Thomas Crimmins Contracting Company), Donald S. Miner (Mergentime Corp.), Charles B. Molineaux, Jr. (Perini Corporation).

ANNUAL MEETING

(Continued)

member of the engineering profession". President Greenfield continued, *"I expect a banner year, we have a fine group of Officers and splendid committee men. With your support and Arline Gallagher in the wings we should do well."*

The entire group of committee chairmen and committees appointed by President Greenfield is listed on this page.



Mole member and Editor in Chief, McGraw-Hill's construction weekly Engineering News-Record, Art Fox makes presentation to fellow-Mole, Dennis C. McCarry at the Plaza Hotel in New York City.

FINANCE COMMITTEE — Elmer A. Richards (Mueser Rutledge Consulting Engineers) Chairman; Winton M. Blount, III (Blount International Ltd.), Martin N. Kelley (Kiewit Engineering Co.), James L. Lammie (Parsons, Brinckerhoff, Quade & Douglas, Inc.), James E. Mahon (Walsh Construction Company), Alfred Muscari (Consultant).

EDUCATION COMMITTEE—Edmund M. Burke (Mueser Rutledge Consulting Engineers) Chairman; Rudi J. van Leeuwen (Spencer, White & Prentis, Inc.) Vice Chairman; J. Marshall Dean (Mergentime Corp.), Allan J. Gale (Thomas Crimmins Contracting Company), Leo M. Halley (Port Authority of NY and NJ), Remy P. Papp (Consultant), Edward S. Plotkin (MacLean Grove & Company, Inc.), George J. Tamaro, Jr. (Mueser Rutledge Consulting Engineers), Charles A. Worischek (Conduit & Foundation Corp.).

PUBLICITY COMMITTEE — Jack T. Walle (Consultant) Chairman; Stanley M. Aronin (Certified Concrete Co.) Vice Chairman; James A. Breen (Breen Brothers Inc.), Richard J. Halloran (Conduit & Foundation Corp.), James A. Leonard, Jr. (Walsh Construction Company), William J. McPhillips (Weeks Dredging & Contracting Inc.), Michael J. Ucci (AMCA International Corp.) C. Richard Walter (Hazen & Sawyer).



ED ARMITAGE (right) accepts retiring Treasurer's Certificate for his son, JIM ARMITAGE at Annual Business Meeting. Jim served The Moles as Treasurer from May 1, 1982 through April 30, 1986. Coincidentally, Ed had received Treasurer's certificate exactly 20 years earlier in May 1966.



GERARD A. NEUMANN, Sr. (right) receives "Life Membership" from good friend (1985/86) President, ROBERT S. GATES. Other "life" presentations on page 8.

McCARRY HONORED BY E N-R

DENNIS C. McCARRY, Vice President in charge of underground construction for Guy F. Atkinson Construction Company headquartered in San Francisco, Ca., was among those honored at the Plaza Hotel in New York City on February 12 this year at E N-R's Man of the Year Award Dinner. Dennis was cited for his part in coordinating construction of the world's largest-diameter tunnel through soft ground. The tunnel will carry Inter-state 90 roadways 1/4 mile through Mt. Baker Ridge in Seattle. To form the 63-ft-diameter tunnel, small boring machines drove 9.5-ft-wide drifts around the perimeter. Workers excavated a final drift at the top by hand. All drifts were lined and filled with concrete, forming a ring with an outside diameter of 82 ft. Workers then removed the earth within the ring. There was virtually no settlement above the tunnel during construction. Consultant, Edgar B. Johnson was cited for conceiving the perimeter drifts while Dennis beat the cost estimate and schedule. See photo opposite page.

THANK YOU LETTER

"We would like to express our appreciation for The MOLES tour on April 18. Our students were unanimous in their enthusiasm after completion of the tour. They were all impressed by the magnitude of the tunneling operations, and thought that the trip was a valuable adjunct to their education. Thank you for your efforts. We look forward to seeing you again next year."

- GERARD F. FOX, Partner, Howard Needles Tammen and Bergendoff, prominent NYC based consultants, is the recipient of the 1986 Roebling Award. The Award given by the Met Section of ASCE was established for eminence in design and rehabilitation of bridges throughout the world to honor the memory of the Roebling family who pioneered bridge building in the United States. Since joining HNTB in 1948, Gerry has designed or supervised the design of many major bridge projects including the Woodrow Wilson Memorial Bridge in Washington, DC; the Delaware Memorial Suspension Bridge; and the Newark Bay Bridge in NJ. Since January 1976 he has been Contact Partner for bridge projects firmwide. He is in responsible charge of the concrete cable-stayed Dame Point Bridge in Jacksonville, Florida, designed in both concrete and steel, with a center span of 1,300 feet; RioNiteroi Bridge in Brazil —the world record box girder span; and the 10-km-long Penang Bridge with a cable-stayed segmental concrete span linking Penang Island with mainland Malaysia. He has been a member of The Moles since 1968.

- In a surprise move at the 127th commencement exercises at the Cooper Union for the Advancement of Science and Art, the Chairman of the College's Board of Trustees announced he would resign from his position after serving 15 years. At the same time, he announced that he would be succeeded by GEORGE A. FOX, President and Chief Engineer of the Grow Tunneling Corporation. After being identified as the new Board Chairman, George said he could not have imagined that honor ever coming to him when the financier, J.P. Morgan, presented him with his engineering degree 46 years ago. Further he said, "this place has given me very much more than I can ever give back to it."

CHARTER MEMBER DEAD AT 80

RALPH R. BUSCELL died on February 12, 1986 at his home in Bradley Beach, N.J. He was 80.

After serving in the U.S. Navy during his early years, he started in construction in New York City where he was first a rigger and mechanic. Due to his rigging ability and previous background, he was dubbed "Sailor" a nickname despite his dislike, followed him throughout his lifetime. He was known as "Sailor" to all his closest and oldest friends in The Moles, the late Pete Connolly, Eddie Mahoney, Jim Armstrong, Jack MacDonald, Charlie Richardson and others of that era.

He worked most of his early years on compressed air foundations and tunnels. Just prior to WW II he was employed by Walsh Construction Company on the building of Camp Edwards and then on the construction of the U.S. Navy base in Trinidad, B.W.I. He attained the rank of Major while serving in the U.S. Army during WW II (1943/46) and supervised the reconstruction of the harbor at Cherbourg.

After the war he worked for Poirier & McLane in NYC on the NJ Turnpike and for the Perini Corporation on Tunnel and shaft work in Boston and NYC. Ralph also worked on the U.S. Bases in Spain and on rock excavation under the erected WTC towers.

A charter member of The Moles, he had already gained a reputation as a super on major work in NYC at the time The Moles were organized.

NEW MEMBERS

C.E. THOMAS CLEVELAND is President of H.O. Penn Machinery Company, Inc. H.O. Penn is the Caterpillar dealer serving the Connecticut and South-eastern New York region selling, servicing and repairing that equipment which is an important part of the construction industry. A graduate of Yale University, Tom received a B.S. degree in 1968.

WILLIAM J. DEASY is President and Chief Executive Officer of Morrison Knudsen Corporation a worldwide engineering and construction company engaged in diversified construction activities. He has served this company for over two decades rising from the ranks of Project Manager on up to the position he currently holds. Bill has a Civil Engineering degree from The Cooper Union in New York which he earned in 1958 and an LLB in law from the University of Washington which he earned in 1963.

FRANCIS E. FENNERTY is President of Kiewit Eastern Co., headquartered in Omaha, Nebraska. Frank has served the Kiewit organization for over thirty years, joining the company in 1955. He has a degree in Geological Engineering which he earned at St. Louis University. Advancing through the ranks from laborer to his current position, Frank has gained experience all over the U.S. and at virtually every level of responsibility. His construction project exposure includes power plants, dams, military works and tunnels.

CHARLES H. HARRINGTON is Vice President of Construction for Yonkers Contracting Company, Inc., General Contractors specializing in Heavy & Highway Construction. Charlie has forty years construction experience, over twenty of which were spent at Yonkers Contracting. He has been in charge of many major multimillion dollar projects for the firm. He is a graduate of Villanova University, earning his Civil Engineering degree in 1945.

JOHN M. JACOBS is President — Heavy Division, Dillingham Construction N.A., Inc., headquartered in Pleasanton, California. In this capacity he is responsible for all heavy, civil and

marine construction performed by the subsidiary of Dillingham throughout the continental United States and Alaska. John has over twenty years of heavy construction experience progressing steadily through the ranks to the position he currently holds. He has held responsible assignments on dams, tunnels, rapid transit, power and marine projects. He earned a BS in Civil Engineering from Santa Clara University in 1963 and received his masters degree in 1964 from Stanford University.

EDWARD P. KENNEDY is Manager of Special Accounts with E.I. du Pont de Nemours & Company, Inc., Explosives Products Division. In this capacity he represents Du Pont for sales and technical assistance of commercial explosives on a national level for major heavy construction projects including tunnels, dams, highways, power projects, and other miscellaneous projects. Ed has a Bachelor of Science degree (Pre-Law) from the University of Boston College which he earned in 1950.

RICHARD J. LEAHY is Manager of the Construction Division in the Engineering Department of the Port Authority of NY & NJ. His experience covers over thirty years of responsible positions on major heavy construction projects. In his current position he is directing the Port's major contract construction effort in Industrial Parks, Waterfront Development, Tunnel and Bridge Rehabilitation, Railroad Ventilation and upgrading existing projects. Dick has a BS in Civil Engineering from Manhattan College which he earned in 1951.

WILLIAM F. LOFTUS is President & Owner of William F. Loftus Associates, Inc., a consultant to contractors, owners and architects in geotechnical matters as they relate to heavy construction. A 1957 Civil Engineering graduate from Manhattan College, Bill is the recent Past President of the Deep Foundations Institute, having served four consecutive terms. Bill has offered several papers to the industry, holds three patents of instruments related specifically to the pile driving segment of that industry and is listed in "Who's Who in Engineering".

LOUIS L. MACE is President of S.J. Groves Construction Company headquartered in Minneapolis, Minnesota. Lou Mace joined S.J. Groves in 1973 after fifteen prior years' experience in construction including as President and Owner of his own firm. Since joining S.J. Groves he has handled increasing responsibilities as Area Manager, Assistant Vice President, Area Manager and Vice President and Manager of the Engineered Construction Group before becoming President of S.J. Groves in April 1984. Lou has had responsibility for heavy, hydro and waste water treatment projects during his tenure with Groves and has traveled extensively. He earned a BSCE from Oregon State University in 1959 and an MBA in 1964 from George Washington University. He is a Director of the Beavers on the west coast and a member of the U.S. Committee of the International Commission of Large Dams.

JOSEPH T. MILLER is Assistant Commissioner, Director of New York City's Bureau of Water Pollution Control. In that capacity he is in charge of the design, construction, supervision and operations of the City's Water Pollution Control Program. He earned his Bachelor's degree in Civil Engineering in 1953 from the City College of New York School of Technology and later received his Master's degree.

FORREST E. NELSON is Vice President and Manager - Heavy/Marine Group - Metric Constructors, Inc., one of the companies comprising the Jones Group Inc., headquartered in Charlotte, North Carolina. Forrest has many years experience in heavy complex projects and has progressed from field engineer, chief engineer, to the position he currently holds. He is a 1953 Civil Engineering graduate of Duke University.

GEORGE P. NEUMANN is Vice President for Spearin, Preston & Burrows, Inc., New York City based General Contracting firm specializing in heavy and marine construction. George is the third

generation of the firm and The Moles, his grandfather, the late George Burrows was also a Mole member and his dad, Jerry Neumann is a Life (forty-year) Member. His brother, Jerry, Jr., has been a member since 1977. George earned his Civil Engineering degree from Union College in 1967 and served four years with the U.S. Navy's Civil Engineering Corps before entering the family firm fifteen years ago.

EDWARD O. PFRANG is Executive Director of the American Society of Civil Engineers. In this capacity he directs the activities of the organization which include technical publishing, conventions and conferences on technical and professional affairs, forums, education activities, public communications programs and other activities designed to improve and advance the technical capability of ASCE members and improve the professional status of civil engineers. Prior to joining ASCE he was Chief of Structures Division, Center for Building Technology, National Bureau of Standards where he directed a broad range of research programs in structural engineering, construction safety, foundations and geotechnical engineering. Ed is particularly noted for his leadership in investigation and reporting on the causes and prevention of structural failure. As head of the Structures and Building Safety Group, he was responsible for some landmark research on the performance of structures, particularly in the area of wind and earthquake loads. While at NBS his group performed definitive investigations into such structural failures as a large parking garage at Bailey Cross Roads, Virginia; the collapse of a cooling tower at Willow Island; and the failure of the walkway at the Hyatt Regency Hotel in Kansas City. He earned his Civil Engineering degree in 1951 from the University of Connecticut and an M.E. in Structural Engineering in 1952 from Yale University. He also has a Ph.D. in Structural Engineering which he earned from the University of Illinois in 1961.

STEPHEN PIRIGYI is Vice President of Manitowoc-Forsythe Corp., a supplier of cranes and excavators to the heavy construction industry. A native of New York, Steve has spent his entire career in the construction business throughout the Metropolitan area. In his current position, Steve supplies and advises on the right equipment for the construction project involved as well as overseeing the day to day operations of the company.

JAMES PIZZAGALLI is Vice President of Pizzagalli Construction Company headquartered in Burlington, Vermont. The firm specializes in the construction of power and industrial process facilities, water and wastewater treatment plants as well as buildings for government agencies and private enterprise in various parts of the country. An active participant in the affairs of the Associated General Contractors of America, Jim has served on both the local chapter and national levels. He is a past president of the AGC of Vermont and has served on many of its committees. He is a Life Director of the Associated General Contractors of America and has dedicated much of his time and talent to the organization. He is a graduate of the University of Vermont earning a B.S. in 1966 and in 1969 he earned a J.D. from Boston University.

K. KEITH ROE is President & Chief Operating Officer of Burns and Roe Enterprises, Inc., headquartered in Oradell, NJ. The firm is prominent in the engineering, construction and construction management operations serving both the electric power, industrial and defense sectors with projects of various size. His education includes a BSME from Princeton University (1968); U.S. Navy Officer Candidate School (1969); Master of Science, Nuclear Engineering, and Engineer's Degree, Nuclear Engineering from MIT (1974); and Program for Management Development, Harvard Business School (1980).

ROBERT J. RYAN joined Walsh Construction Company in 1970. He has had key bidding and field responsibilities for Walsh on such major projects as the Dstrigas LNG Tanks and Board of Water Supply Underground Water Storage Tanks, Staten Island; on the Seminole Electric Power Plant in Palatka, Florida and on facilities for the U.S. Air Force in Palmdale, California. Bob has a Civil Engineering Degree from Polytechnic Institute of Brooklyn. His construction career began as a surveyor for Amman & Whitney on the Verrazano-Narrows Bridge foundations. He then spent ten years with Poirier & McLane on various heavy projects throughout the Metropolitan area before joining Walsh.

GEORGE L. SENIOR is Vice President - Heavy Construction for Gust K. Newberg Construction Co., headquartered in Chicago, Illinois. Prior to his joining the Newberg organization he was a Vice President and a key member of Paschen Contractors. He has wide experience in the field of heavy construction including tunnels, bridges as well as buildings. George has a B.S. in Civil Engineering from the Missouri School of Mines & Metallurgy which he earned in 1956.

DONALD K. STAGER is President and Chief Executive Officer of Dillingham Construction Corporation and a Senior Vice President of Dillingham Holdings, Inc. Prior to joining Dillingham in 1982, Don had spent his adult career with the Guy F. Atkinson Company starting in 1952 advancing through the ranks as Engineer, Project Engineer, General Superintendent, Construction Manager, Vice President & Director, Senior Vice President to President and General Manager. His heavy Construction experience includes work on many major dam projects, underground hydroelectric and hydro-power plants, air bases and other major projects worldwide. In addition he is a member of many professional associations including: the Beavers, ASCE, U.S. Committee on Large Dams and Stanford Construction Executive Program. He is a 1952 Civil Engineering graduate of Stanford University.

★ EDUCATION COMMITTEE ACTIVITIES ★

1986 STUDENTS DAY

On Friday, April 18, The Moles' Education Committee were hosts to about 250 civil engineering students at the Annual Students' Day. Students gathered at 8 a.m. at the New York City Transit Authority's Roosevelt Island subway station (completed but not in use) bright and eager to learn something they would never get from any text book. They were offered "hard hats" and coffee and pastries to start their day. (Many of these students had been on the road since very early a.m. coming from as far as: Lewisburg, PA; Ithaca, Delhi, Troy, Schenectady and West Point, NY; Storrs, CT.; locations in NJ and the Metropolitan area). The day included a detailed explanation of the construction of the subway station; and construction being performed by Healy-Yonkers-Atlas-Gest (valve chamber and related work) a portion of the New York City Board of Water Supply Tunnel #3.

The student engineers along with several professors accompanying the various groups were taken to the mezzanine level in the station where representatives from the T.A. and the Board of Water Supply gave brief presentations describing both the subway and water tunnel construction. They were shown slides of the placement of sunken tube construction in the East River, the excavation of the escalator shaft and the rock tunneling for the station. The finished contracts were described as well; and the students were given the opportunity to inspect the mezzanine level and platform levels at the conclusion of the talk. This was followed by a presentation, describing the construction of the third water tunnel, the two drop shafts, the valve chamber and the manifolds. The sequence of construction and the operations of the system was described in detail by a representative of the NYC-DEP Bureau of Water Supply.

Students walked to the third water tunnel site where they were shown the concrete mixing plant; given a brief description of the operation of the plant; and the quality of the concrete product used in the lining of the tunnel. At the testing laboratory where concrete cylinders are cured and tested and where concrete aggregates are tested for conformance to specification, each group witnessed the testing of a concrete cylinder. The groups then proceeded to the compressor area where a representative of S.A. Healy described the air supply system for ventilation and equipment operation within the tunnel. Lastly, the students proceeded down the shaft to either the valve chamber or to the main tunnel. In the valve chamber, the Contractor's site geologist gave a brief lecture on the general excavation procedures within the chamber, as well as a description of the raised boring machine operation, which was drilling one of the riser pipes from the manifold up into the valve chamber. In the main tunnel they were given a lecture on the tunneling operations, the geology within the tunnel alignment, the operation of the hoist, material delivery and spoil removal operations, as well as the tunnel grouting and concreting operations. The trip was concluded after all students completed the circuit. A box lunch was given everyone at this point and students were able to ask questions of their guides.

Serving as guides for the day and/or otherwise assisting towards the success of the day were: Chairman and Vice Chairman of the Education Committee, Ed Burke and Rudi van Leeuwen; Gene Casey; John Chow; Marshall Dean; John Donargo; Jack Ely; Mel Febesh; Gus Fleischer; Bob Hill; Jim Mahon; Tony Mazzo; Remy Papp; Ed Plotkin; Elmer Richards; George Tamaro; Jack Walle and Charles Worischek.

As always, the big hit of the day was the "Hard Hats" for which the Education Committee thanks those generous contractors who contributed.

THANK YOU FROM DR. C.N. BURKE U. OF CONNECTICUT

I feel you must know the excitement and awe that your "Student Day" tours generate (not only in the students, by the way). It is frustrating, nevertheless not to be able to "bottle" the conversations and discussions which fill the cars, vans and buses as we all return to our campuses and offices and send them back so you could enjoy them. There is no way that expressions of appreciation can repay the members of your organization for the time and personal investment in arranging these tours.

Although the phrase "There is no way to thank you" is often lightly used, in this case, it is absolutely true. Please thank everyone who arranged the many small points which made the day so successful. This includes, but is not limited to:

the smiling person who placed himself at the entryway to the parking garage so the lost and the confused had a sense of really finding where they were supposed to be and go,

those who presented the slide program so there was some advance information on what we would see on the tour and offered a chance for questions,

the group or person who made arrangements for the hard hats (they are now mounted on every student's souvenir shelf,

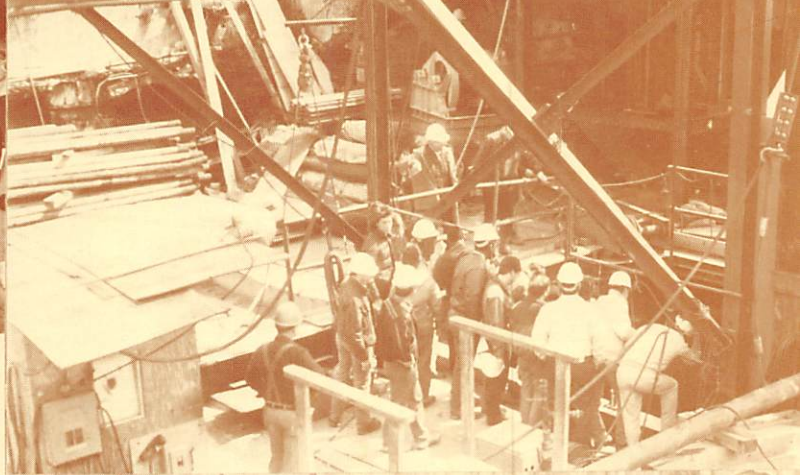
those who arranged for the box lunches — (very good lunch!),

those who prepared the maps and written directions, and to each guide.

A very sincere "Thank You" from those of us who came from Connecticut.



Students' Day 1986



1986 ANNUAL BUSINESS MEETING

