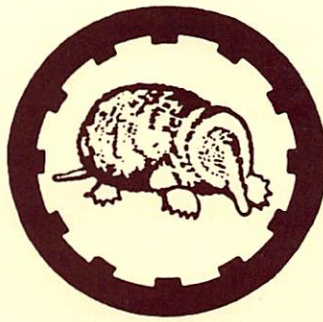


NEWS BULLETIN

AN ASSOCIATION OF INDIVIDUALS



OF THE MOLES

ENGAGED IN HEAVY CONSTRUCTION

**HOLING**

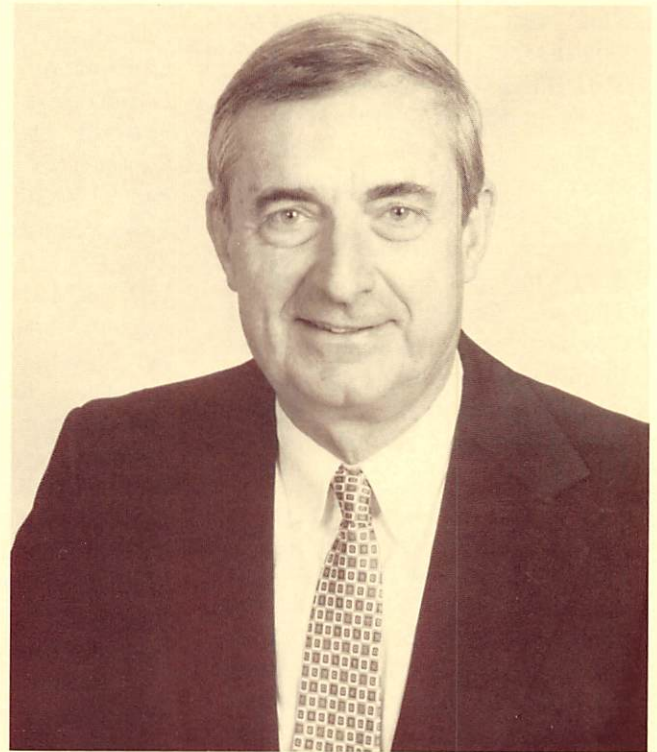
**THROUGH**

NOVEMBER, 1999

## STRICKLIN and LILES Selected for 2000 Outstanding Achievement Awards



**GUY M. STRICKLIN**



**SHERWOOD E. LILES III**

**G**

UY M. (PAT) STRICKLIN, President of Flatiron Structures Design/Build and CM Services Division, Irvine, California and SHERWOOD E. LILES III, President of North Star Construction Corp., Virginia Beach, Virginia, will receive The Moles Outstanding Achievement in Construction Awards at the Annual Award Dinner to be held on Wednesday evening, January 26, 2000 at the New York Hilton Hotel and Towers.

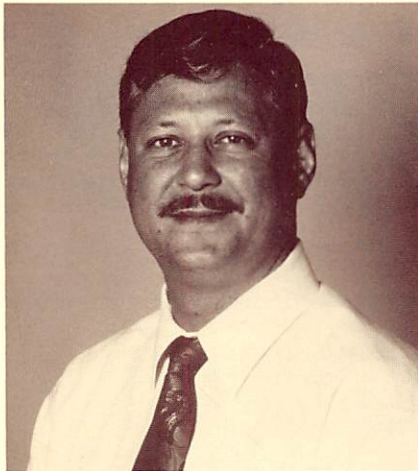
PAT STRICKLIN was born in Amarillo, Texas on June 11, 1944, but spent his childhood in Beeville, in South Texas. He received his Bachelor of Science degree in Civil Engineering from Texas Tech University in 1967. Following graduation, Pat went to work immediately for Morrison Knudsen Corporation in Boise, Idaho, beginning a 27 year career with the firm. He spent his first year in MK's "Bull Pen" learning the estimating

SHERWOOD E. LILES III was born June 13, 1931 in Salisbury, North Carolina. He had the opportunity to live in Beauford, South Carolina; Norfolk Virginia; Salisbury, North Carolina; and Virginia Beach, Virginia because his father was involved in heavy construction with Tidewater Construction Corporation and moving was normal. After serving as a corporal in the United States Marine Corps Reserves he attended the University of Virginia where he received a Bachelor of Civil Engineering Degree in 1957.

(Continued on next page)

(Continued on next page)

## Award Chairman



PETER S. SCHNEIDKRAUT

This year's Award Committee Chairman is PETER S. SCHNEIDKRAUT, President of Grow Tunneling Corporation.

He graduated from Lehigh University in 1975 with a Bachelor of Science Degree in Civil Engineering and started his construction career with Thomas Crimmins Contracting Company. as a design engineer followed by an assignment as filed engineer on the 63rd Street Subway and Lexington Avenue Station Project.

In 1978 he embarked on his career with Grow Tunneling Corporation as a Tunnel Superintendent on the Red Hook Interceptor Sewer Tunnel in Brooklyn, New York, a compressed air tunnel. . This was followed by assignments to a number of other challenging underground projects, including the Van Courtland Park Valve Chamber in the Bronx

In 1992 he was promoted to Executive Vice President and in 1993 to his current position of President. Pete is a licensed professional engineer in New York and New Jersey, a Member of the American Society of Civil Engineers and of The Beavers.

Peter and his wife Valerie have three children and reside in New City, New York.

## *GUY M. STRICKLIN*

(Continued from Page 1)

and bidding process. While he was in Boise, he met and married Peggie Willhite, his wife of 32 years.

Following the year of training in Boise, he began a series of assignments on MK projects of all types throughout the United States and Central America. From 1968 to 1985, Pat progressed from Cost Engineer to to Project Manager on numerous projects throughout the United States and Central America. Among the projects he worked on during this period were the following: ABM Missile Facilities in Langdon, North Dakota and El Paso, Texas; 500 bed Construction Camp for British Petroleum in Prudhoe Bay, Alaska; Earthfill Dam and Hydroelectric Project in El Salvador; \$250 million Anheuser Bush Brewery Expansion Project, Houston, Texas.

In 1985 he was promoted to Western Region Manager in MK's office in San Francisco providing design/build services for the aerospace, microelectronic and food processing industries. He subsequently served as Project Manager for a \$450 million nuclear fuel processing facility for the DOE in Idaho Falls, Idaho and as the Manager of Construction for the \$2.7 billion new Denver International Airport. Under Pat's leadership, the 700 person Program management team oversaw all work at the airport, accomplishing over \$1 billion in construction in nine months, with a work force of over 11,000.

In 1994 Pat took on the assignment of Project Manager for the Flatiron sponsored Joint Venture for the design and construction of the Eastern Toll Road in Orange County, California, a \$687 million project. Despite being \$114 million low on the bid, the project was completed under budget and 10 months early.

(CONTINUED ON PAGE 3)

## *SHERWOOD E. LILES III*

(Continued from Page 1)

During his high school and college years he worked as a laborer and instrument man on various heavy construction projects for Tidewater Construction Corporation. He joined Tidewater as a permanent employee in 1957, where he worked for thirty years.

The first seventeen years with Tidewater Construction were spent working as a field engineer, superintendent and project manager on various heavy construction projects and pulp and paper mill construction projects in the southeast United States, including the Chesapeake Bay Bridge-Tunnel. His last filed assignment was as Project Manager on the second Hampton Roads Tunnel, which was completed in 1974.

After that project, Sherwood was assigned to the position of General Superintendent of Tidewater's Heavy Construction Division. In 1977 he became Vice President of the Heavy Construction Division and in 1979 he became a Director of the Corporation. In 1985 Sherwood was placed in charge of all heavy and industrial construction as well as being assigned Chairman of the Board of Bayshore Concrete Products Corporation, a partially owned subsidiary of Tidewater Construction Corporation.

Sherwood left Tidewater in December 1987 and founded North Star Construction Corporation in January 1988. North Star is a contractor involved in bridge and other heavy construction projects in Virginia and North Carolina. Sherwood became a member of The Moles in 1978 and has served as a Trustee, Chairman of the Award Committee and as President in 1989.

Sherwood and his wife Lois live in Virginia Beach and have three grown children: John, Ann and William along with five grandchildren. John,

(CONTINUED ON PAGE 3)

**WETMORE AND DONOHOE**  
*to present Awards*

BRYON F. (SKIP) WETMORE, President of The Lane Construction Corporation, will present the Non-Member Award to Guy M. Stricklin and JOHN F. DONOHOE, President of Moretrench American Corporation, will present the Member Award to Sherwood E. Liles III.

**SRICKLIN** (CONTINUED FROM  
PAGE 2)

When the last section of the toll road opened to traffic in February 1999, Pat assumed the role of President of Flatiron's Design/Build and CM Services Division. At present Pat is responsible for three major projects: the Foothill South toll road in Orange County; the Route 44 widening project in northwestern New Mexico; and the Carolina Bays project in Myrtle Beach, South Carolina.

During their numerous moves around the country, Pat and Peggie raised four children, the youngest now being 22, and they have four grandchildren.

**LILES** (CONTINUED FROM PAGE 2)

the oldest child, is Vice President of North Star Construction Corporation.

Sherwood is a Member of the American Society of Civil Engineers and has been active in local civic activities, including past President of the Virginia Beach Rotary Club, a Board Member of Tidewater Health Care Inc. and a Board member of the General Douglas MacArthur Foundation.

Sherwood's father, Sam Liles, was the recipient of The Moles Non Member Award in 1964 in recognition of his leadership in constructing the Chesapeake Bay Bridge and Tunnel Crossing in 1960 to 1964.

## NEWS OF MEMBERS

JOHN BIDOSKY III has been promoted to Vice President of American Bridge Company with responsibility of the New York region. John has been with American Bridge 16 years and has been involved in numerous projects for the company, including the Newburgh Beacon Bridge, the Bronx Whitestone Bridge reconstruction and the Williamsburg Bridge reconstruction.....DELON HAMPTON assumed the position of President of the American Society of Civil Engineers at its Annual Meeting in October....LARRY LEHMAN has been named Chairman of the N.Y. State Board of Professional Engineers and Land Surveyors.....FRANK LOMBARDI and PETE SCHNEIDKRAUT were honored by the Engineering and Construction Chapter of American ORT at its Annual Luncheon at the Grand Hyatt Hotel on November 4, 1999.

## A MOMENT OF SILENCE

JOSEPH A. HALEY died on September 6, 1999 at the age of 59 after a battle with cancer. A Civil Engineering graduate of Northeastern University, Joe spent over 25 years with Perini Corporation before joining the H.B. Zachry Company.

HUGH G. NIVEN died in May 1999. he was a graduate of the United States Merchant Marine Academy and worked for many years for J. Rich Steers, Inc. He was 75 at the time of his death.

The Moles' office only recently became aware of the death of RICHARD H. TUNSTEAD on January 12, 1998. Mr. Tunstead was 88 years old and had practiced construction law for most of his career

## THE MOLES

Holing Through is published by The Moles three times a year: April, July and November. The Moles is an organization of people engaged in heavy construction. Its purpose is to promote better acquaintance among individuals engaged in heavy construction to the end:

- That past and future friendships and a spirit of fraternization among the members be fostered.
- That meetings and other gatherings be held to exchange construction information and promote good fellowship among members.
- That advancement of the Construction art be achieved and outstanding performance be recognized through awards and otherwise.
- That the youth of our country be encouraged to participate in heavy construction by a multi purpose program of education in cooperation with engineering colleges and other associations.
- That, in the public interest, standards of construction shall be raised both as to engineering and business ethics.

The Moles' office is located at 577 Chestnut Ridge Road, Woodcliff Lake, New Jersey 07675. Telephone: 201-930-1923 Fax: 201-930-8501 Executive Director: Gerard J. Carty, P.E.

# 25 YEAR MEMBERS

FREDERICK J. CLARKE served as Chief of Engineers and retired in 1973 with the rank of Lieutenant General. He then worked for TAMS as a Senior Consultant, retiring in 1984. He resides at Ft. Belvoir, Virginia.

At the time he became a member of The Moles in 1974, LELAND H. CROSBY was employed by Cayuga Construction Corporation. A graduate of Union College he went on to work for Sarcon Construction Corporation and John E. Picone and currently resides in Cape May, New Jersey.

J. MARSHALL DEAN continues to keep active as a consultant. He graduated with a Bachelor of Civil Engineering from the University of Virginia and earned a Masters Degree in Civil Engineering from NJIT. He spent his construction career with Perini Corporation, Mohawk Constructors, Jenny Engineering Corporation and Mergentime Corporation. Marshall continues to live in Livingston, N.J. and occupies himself with 7 grandchildren and travel.

When elected to membership in The Moles in 1974, FRANK P. DIMENNA, JR. was a young Superintendent with the family owned company, Nicholas DiMenna & Sons, Inc. When that firm closed its doors in 1992, Frank joined Spearin, Preston & Burrows as Equipment Manager and in 1997 was placed in charge of Business Development. He resides in Bronxville, New York with his wife Deborah and four children. Frank is an avid sports fan and golfer and travels to Rome every year to visit family relations.

WALTER M. ENGER is 85 years old and spends his time enjoying the friendship of others in "The Virginian" a retirement community in Fairfax, Virginia. After a long career with the

Navy, Walter retired as Commander of the Naval Facilities Engineering Command with the rank of rear Admiral. He then went on to work for DeLeuw, Cather & Company in Washington, D.C.

ROBERT E. FITZNER started with Dravo Corpeoation after graduation from Cornell University and service in the Korean War. He continued with Dravo for 29 years ending up as Vice President and Assistant General Manger of the heavy division. He was involved in many major heavy construction projects in this country and overseas. Bob is still active as a consultant on a part time basis but now enjoys more time for leisure activities, which include fishing, golfing, photography, computer work and travel. He and his wife just returned from a a month long trip to China and a visit to Three Gorges Dam.

SEYMOUR S. GREENFIELD better known as Steve, received his Mechanical Engineering Degree from Polytechnic University in 1943 in time to serve in the U.S. Navy in World War II. He spent his entire professional career with Parsons Brinckerhoff until his retirement as Board Chairman in 1992. As Chairman Emeritus, he now serves as a consultant to the company. he also continues active in charitable and educational endeavors. A Past President of the Moles, Steve resides in Ft. Lee, New Jersey and he and his wife enjoy playing golf and travelling.

THOMAS E. GUNN retired from Bethlehem Steel Corporation as Contracting Manager for the New York area in 1986 after 32 years of service. Tom remains active in the industry with Tom Gunn Enterprises, furnishing rebars, piling, fabricated steel, etc. Tom continues to reside in Darien, CT where he and his wife are proud grandparents of nine grandchildren. Tom currently serves as Sergeant-at-Arms of The Moles.

MORSE H. KLUBOCK has been employed by the Perini Corporation since 1957. Prior to that he worked for Merritt-Chapman & Scott Corporation. Morse earned a Bachelors Degree in Civil Engineering from MIT and did graduate work both at MIT and Harvard. He now resides in Wellesley, MA.

THOMAS C. KNOWLES spent a long career with Conduit & Foundation Corporation managing their New Jersey operations. Prior to that, he was Vice President of Union Building & Construction Corporation. Tom continues to reside in Wayne, New Jersey.

From his election to membership in The Moles in 1974 until retirement in 1990, THOMAS R. KUESEL directed Parsons Brinckerhoff's underground work on such projects as MARTA's Peachtree Center rock cavern station, the Ft. McHenry Tunnel, the Los Angeles Metro, the Trans-Koolau Tunnel and Boston Central Artery project. Now Chairman Emeritus of Parsons Brinckerhoff Quade & Douglas, Inc., he is consulting on the LIRR's East Side Access project. Tom was elected to the National Academy of Engineering in 1997 and now lives in Charlottesville, Virginia.

JOHN LOWE III joined TAMS in 1945, became a partner in 1962 and retired in 1983. While with TAMS, among many noteworhy projects, he played a lead role in the design and construction of Tarbela Dam in Pakistan, the World's largest earth dam. Since his retirement from TAMS, John has acted as a consultant on many other major dams around the world. John plays tennis 2 or 3 times a week, tends a quarter acre fruit and vegetable garden and travels extensively.

RONALD A. MARRA writes from Indian Wells, California that he is enjoying golfing and more recently took up adult figure skating. When elected to membership in The Moles, he was Vice

## 25 YEAR MEMBERS - Continued

President of S&M Constructors, Solon, Ohio for whom he served as Project Manager of a section of BART in San Francisco. He subsequently worked as a consultant in Canada before retiring and going on to build a thoroughbred farm for racing and breeding.

FRANCIS J. MC CARTHY served for many years as Manager of National Construction Sales for Hercules Powder Company. He earned a B.S. Degree in Engineering Mining from Lehigh University in 1959. Frank continues to reside in Wilmington, Delaware.

FELIX W. SWEENEY spent his career selling construction equipment, first with American Hoist and Derrick Company and subsequently with Manitowoc-Forsythe Corporation from which he retired in 1985 as Executive Vice President. Felix continues to live in Westfield, New Jersey.

JAMES A. WINNER started his career with Brown & Root following World War II as a Office Engineer and advanced rapidly through the positions of Estimator, Job Superintendent, Department Manager, Officer until he reached the position of Senior Group Vice President in charge of all of Brown & Root's heavy construction work at the time he became a member of The Moles. Jim continues to make his home in Houston, Texas.

## MEMBERS CONSIDERING EMERITUS STATUS

Those members considering Emeritus Status are asked by the Membership Committee to submit their request prior to April 1st so as to allow new candidates to be considered for their places.

## 50 YEAR MEMBERS

ALBERT DI GIACINTO was Senior Vice President of Spencer, White & Prentis, Inc., when he became a Moles' member in 1949. He had been with the firm since 1935, about two years after graduating from New York University. He remained with Spencer until his retirement in 1975. Al was on the fencing team at NYU and also at the NYAC. He has been an active musician along with hobbies of photography and gunnery.

VICTOR B. HERTSLET continues to be an active Moles' member to this day, and is expected to be at the November 3rd Meeting to receive his 50 Year Membership Certificate in person. Vic earned his Mechanical Engineering degree from Lehigh University in 1933 and immediately got into the hydraulic dredging business with P. Sanford Ross in Jersey City, N.J. He then worked for Merritt Chapman & Scott from 1936 to 1943, whereupon he joined the U.S. Army Corps of Engineers and served in the Philippines, New Guinea and Japan. Upon discharge from the military, he embarked on a 35 year career with the Arundel Corporation, Baltimore, Maryland. After retiring from Arundel in 1981 Vic has continued active in a number of industry related activities. More recently he has served as member of the Scholarship Fund Raising Committee.

M. HARRY WARTUR had planned to be present at the November 3rd Dinner to receive his 50 Year Certificate but The Moles office was saddened to learn of Harry's sudden death on October 28, 1999. Harry earned his Civil Engineering Degree from Cornell University in 1927 and went to work for the NYC Department of Public Works. From there he worked for a number of engineering and construction companies including Horn Construction Company, Brookfield Construction Company and Frederic R. Harris. Harry was a very active Moles' member and his presence at our various functions will be missed.

## PLEASE OBSERVE REQUIREMENTS FOR ORDERING AWARD DINNER TICKETS

Ticket requests and payments must be received no later than Friday, January 7, 2000, to assure that members and guests names are included in the Seating List handed out on the night of the Award Dinner. Ticket requests and payments received after that date, will be accepted if space is available, but names will not appear in the Seating List.

## UPCOMING EVENTS

AWARD DINNER  
JANUARY 26TH

WINTER  
MEETING  
MARCH 2 TO 5

MAY DINNER  
MAY 3, 2000

CLAMBAKE  
AUGUST 1, 2000

## NEWS OF MEMBERS

### A PROMOTION

### A RETIREMENT

### A DEATH



JOHN L. KOLAYA

John Kolaya was recently promoted to Executive Vice President of Yonkers Contracting Company. In this position he will be responsible for all subsidiary and heavy construction operations as well as corporate administration.

John Kolaya earned his Bachelors Degree in Civil Engineering from Bucknell University in 1970. By virtue of attending a Moles' Student Day as a senior, he was hired by Crimmins Contracting Company. Starting as a field engineer, John was involved in the construction of foundations for a number of major office buildings in New York City and rose to the position of Vice President in charge of all field work for Crimmins.

John joined Yonkers Contracting Company in 1990 and his initial assignments were Project Manager on several infrastructure projects, including the Manhattan Bridge, Grand Central Terminal and the Triborough Bridge. John was promoted to Vice President of Construction in 1996.

Along the way, he managed to find the time to earn a Masters Degree in Soils from Rutgers University in 1976.



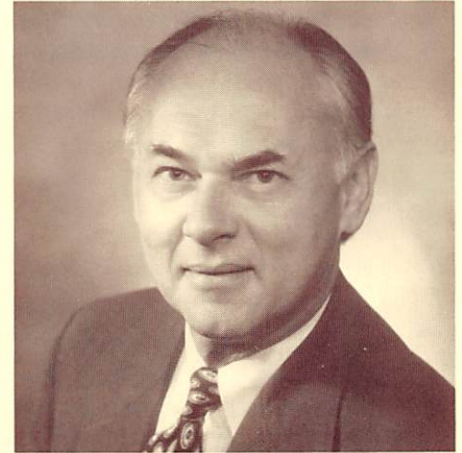
DONALD N. WEISSTUCH

Don Weisstuch will be retiring at the end of this year after a long career in the engineering business. He is a graduate of Brooklyn Polytechnic University, earning a Bachelors Degree in Civil Engineering in 1957 and a Masters Degree in Civil Engineering in 1962.

Don's early career was with TAMS. In 1979 Don joined Sverdrup Corporation, was appointed Vice President in 1982 and from 1986 to 1993 served as Senior Vice President and Manager of Eastern Operations. Serving as Senior Vice President - Transportation since 1994, Don has been responsible for Sverdrup's transportation practice throughout the U.S. and abroad. He has been a member of the Board of Directors of Sverdrup Corporation from 1986 through the company's merger with Jacob's Engineering in 1999.

Don has served as a Trustee of the Moles and has been active in many professional and civic organizations.

He plans to remain active as a Consultant and will spend his time between New York and Florida. He has a real interest in engineering education and it is hoped he will work with the Moles Education Committee in this regard.



RONALD A. WISS

Ron Wiss died suddenly on August 7, 1999 at the age of 55. Ron was the CEO and Chairman of Edwards & Kelcey, Inc., a prominent engineering firm with headquarters in Morristown, New Jersey.

Although a member for a relatively short period, Ron was active and enthusiastic about being a "Mole". He had attended and was a lecturer at the last two Winter Meetings and was last seen by many at the Clambake a few days before his death.

Ron was a Civil Engineering graduate of Newark College of Engineering and attended the Woodrow Wilson School of Public & International Affairs at Princeton University.

He spent his entire career with Edwards & Kelcey and among his most recent projects was the Allied Junction/Secaucus Rail Transfer Station, currently under construction. Ron was active with several Moles' contractors in design/build projects.

Ron's cheerful demeanor and enthusiastic approach to everything he became involved in will be greatly missed.

# THE MOLES AND THE CONSTRUCTION INDUSTRY

As was commented upon previously, the 1950 Award Dinner was one of the great events of the organization, having a Past President of the United States, Herbert Hoover, receiving the Non Member Award and a future President of the United States, Dwight Eisenhower being the Principal Speaker. This was certainly a hard act to follow and in the ensuing almost 50 years has not been topped.

Master politician, James A. Farley, was the speaker in 1951 and World War II hero, General Lucius D. Clay was the speaker in 1952. The recipient of the Non Member Award in 1952 was Stephen D. Bechtel.

We all know about the Bechtel Corporation as it exists today, but few of us know about its origins. The editor recently received a copy of a new book "Bechtel - Building a Century", which provides a fine narrative of the company.

"In 1898, a nearly bankrupt 25 year-year old (Warren) Bechtel and his pregnant wife, Clara, left Peabody, Kansas, and their cattle farm, which had fallen on hard times because of collapsing beef and corn prices, and headed 100 miles south to the dusty expanses of Oklahoma Territory in search of construction work and new opportunity". He didn't stay in Oklahoma long but moved on to Oregon in 1900 with his wife and two children, Warren, Jr., and Stephen, where he became a gang foreman for the Southern Pacific Railroad. From there it was on to Wadsworth, Nevada and there were many other stops along the way until in 1906 he and a partner landed a subcontract for a rock excavation job. As a result of this project Warren gained possession of a Model 20 Marion steam shovel.

The first prime contract came in 1909 with the grading of the site of Western Pacific's Oroville, California station on the Oakland-Salt Lake City line. Subsequently, Southern Pacific began a construction program to capitalize on the development of new traffic in the timber rich Pacific Northwest and in 1910 Bechtel won a subcontract for two sections 15 miles below Natron, Oregon. This was a very successful project and Warren Bechtel confided to a friend that he had more money than he ever expected to have in a lifetime. This attracted the attention of the Wattis brothers, owners of the powerful Utah Construction Company in Salt Lake City and to subsequent work done in partnership with that company.

The W.A. Bechtel Co., continued to grow and prosper. Warren's sons, Warren, Jr., Steve and Ken all shared their fathers enthusiasm for construction. Each boy enrolled at the University of California at Berkeley and did well

academically but all left before graduation because their father needed them. Warren, Jr. and Steve served in France with the Engineers during World War I.

In 1923 Steve (future Moles Awardee) took a job as project chief constructing Southern Pacific's main line extension into Phoenix. Though railroad work continued to be important for Bechtel, highway work was becoming a major source of business. The Coos Bay Highway Bridge, part of the Pacific Coast Highway on the Oregon coast was a major undertaking in 1934 in joint venture with Warren Brothers Construction Company. Bechtel joined up with Henry Kaiser and worked together on a number of highway projects through the end of World War II.

Steve Bechtel was instrumental in getting the company into pipeline construction, also in joint venture with Henry Kaiser.

We talked about Hoover Dam in our last issue. Bechtel was instrumental in forming the Six Companies, Inc., which included among others, their long standing partners, Kaiser and Utah.

After Hoover Dam there were a number of other dams and powerhouses constructed in the west. Another major project was Bechtel's participation in the construction of the San Francisco-Oakland Bay Bridge. Their joint venture, Bridge Builders, Inc., which included Kaiser, won the contract for elements of the eastern portion which included the construction of its deepest pier at minus 247 feet.

Early in 1933, Warren Bechtel and his wife, Clara, accepted an invitation to visit the Soviet Union and he died suddenly on August 28th while visiting Moscow. At age 32, Steve took charge of the Bechtel Company. He guided the company's growth through the war years and like other construction companies got into the shipbuilding business building 467 cargo ships, 15 liberty ships and 78 tankers and oilers. Bechtel also participated in overseas military construction work for the U.S. Government.

Steve saw the company through the post war years and its transformation from a pure construction company into a major engineering-construction company performing major projects around the world.

There is no doubt that Steve Bechtel was a worthy recipient of The Moles Non Member award in 1952.

Steve continued in charge until 1960 when at the age of 60 he turned the company over to his son, Steve Jr.

# *1999 CLAMBAKE*

## *ENGINEERS PREVAIL OVER CONTRACTORS 12 TO 10*

For the first time in many years a strong engineering team, managed by Charlie Vachris, beat the contractors in a hard fought seven inning contest. Roy Durig went the distance for the engineers while Glenn Biesiadecki took the loss for the contractors. A ten hit barrage in the 4th inning that produced seven runs did the contractors in. Extra base batters for the engineers were Tony DePasquale and Paul Martin. Mark Beljan homered for the contractors and Wayne Scheers and Leo Pflug contributed triples. The game was well officiated with veteran umpires Steve Greenfield behind the plate and Al Beljan on the bases. Max Reimbold, as usual, served as the official scorekeeper.

Some relief was had from the sweltering temperatures that persisted in the New York area during the summer. Many attendees cooled off taking the Spearin, Preston & Burrows tugboat ride. There was also an ample supply of beer and soda to quench everyone's thirst. The usual fine buffet lunch and turf and surf dinner were enjoyed by all present.



### ENGINEERS TEAM

Front Row: Carmine Marra, Bob Alpenstein, Glenn Biesiadecki, Joe Caldera, Bill Stasink, Laul Martin, Greg Biesiadecki

Back Row: Harry Markriss, Steve Lawnicak, Tony DePasquale, Tom Rouhl, Roy Durig, Walter Gross, Kyle Ott, Gary Mueller, Charlie Vachris



### CONTRACTORS TEAM

Front Row: Harry Markriss, Marc Beljan, Leo Pflug, Sam Mezzacappa, Wayne Scheers

Back Row: Gerry Brady, Rick Lazar, Tom Raihl, Chris Bennett, Greg Biesiadecki, Glenn Biesiadecki

---

## *MOLES SCHOLARSHIP FUND TOPS \$1 MIL*

---



Michael Bottass and Ray Oneglia

With a spurt of activity in the fourth quarter, the Moles Scholarship Fund topped the \$1Mil mark in pledges and contributions. The Modern Continental Construction Company donated \$25,000.00; Christopher Grieb, a former Kiewit Executive, pledged a \$25,000.00 contribution at years end; and the Perini Corporation pledged \$25,000.00. We are now at the halfway mark in reaching our goal of raising \$2 Mil in contributions.

In September, The Moles office received a call from the University of Connecticut asking if a Moles' member could make the presentation of the Moles Scholarship to the recipient, Michael Bottass, at an American Society of Civil Engineers meeting. Moles President Ray Oneglia gladly accepted this invitation and was pleasantly surprised to find that Michael had worked for his company, O&G Industries, during summer periods and that his father was a long standing O&G employee.