

The BEST Visitor Attractions

GLANCE

Your Dublin Adventure

2020/21

FREE
Visitor
Guide



Ireland's
East &
Dublin

WIN
a Great
Lighthouses
of Ireland
holiday



DoDublin™
Hop on Hop off
Tour

DISCOVER IRELAND.IE

YourDailyAdventure.com

Ireland's largest city and capital of Ireland, Dublin is known around the world. Whether it's Joyce or Shaw, The Gate or Abbey Theatres, The Book of Kells or The Ardagh Chalice, Georgian Architecture or 21st Century design, they all connect to Dublin.

Cead Mile Fáilte

A Hundred Thousand Welcomes – to Dublin and Ireland's East

This free publication aims to enhance your visitor experience by providing you with information on just some of the visitor attractions and places of interest open to the public for you to enjoy during your visit. You'll find lots of attractions, historic landmarks, fun outdoor activities, entertainment, shopping experiences and much more.

Plenty of choice

Variety is the essence of a good holiday and Dublin and Ireland's East certainly provides a wide range of attractions and visitor experiences to choose from.

Detailed information is included on each attraction and visitor experience including eircodes and sat nav co-ordinates, opening times and admission rates.

Enjoy!

Finally, we do hope that you make the time to explore the rich heritage and delights of Dublin and the surrounding area, and that your Adventure is a rewarding and enjoyable one.

Guides for other regions in Ireland are widely available.

We would welcome your feedback on the guide to info@glancepromotions.ie

DUBLIN
UNESCO
City of Literature



Published by

GLANCE

Publisher, John Rice.
Published by Glance Promotions,
Tipperary, Ireland.
Tel: 061-338588,
info@glancepromotions.ie
www.glancepromotions.ie
Design: OpticNerve.ie

Associate Member of



First European Member of



The International Association of
Visitor Information Providers

Available from



Tourist Information Offices

Opening Dates and Times

Opening Dates and Times are subject to change and may vary throughout the seasons and by day of week. Establishments indicating 'open year-round' may still close, for instance, on Christmas Day. We recommend you verify dates and times directly with each featured establishment, particularly if travelling distances. Entertainments operate subject to demand and pre-booking is normally required.

Admission Rates

The admission rates quoted in this publication are the normal rates for individual adult admissions, children and families. Many of the featured attractions and entertainments do offer special rates for groups, students and seniors. The rates quoted are the 2020 rates as submitted by the individual businesses.

Errors and Omissions

Every care has been taken in the compilation of this guide to ensure its accuracy and compliance with the consumer protection laws of Ireland. Glance Promotions cannot accept responsibility for errors or omissions, but where such are brought to our attention future editions will be amended accordingly.

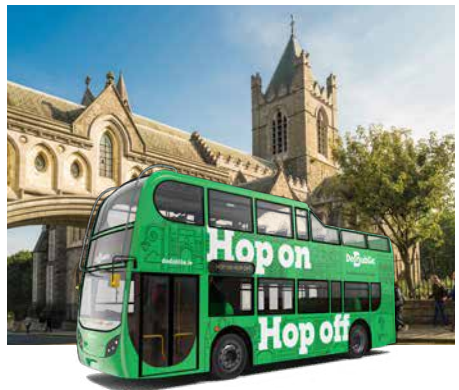


Dublin's No.1 Bus Tour

Whether you want to sit back and soak up the culture at Dublin's historic sites or get out there and explore the streets, meet the people and sample the Guinness, our guides can help you make the most of your holiday and see the city like a local.

FREE Walking Tour
FREE Little Museum
FREE Kids u14

**Book online
and Save 10%
at dodublin.ie**



Glendalough & Powerscourt

Explore stunning Glendalough - Ireland's oldest monastic city & relax in the Georgian glory of Powerscourt Estate & Gardens

FREE Kids u14
FREE Hotel Shuttle
FREE Walking Tour
FREE City Tour Loop



Book online on dodublin.ie and **SAVE 25%** on any DoDublin Day Tour with promo code **dailyadventure**.

WIN

an Amazing Holiday Break at a



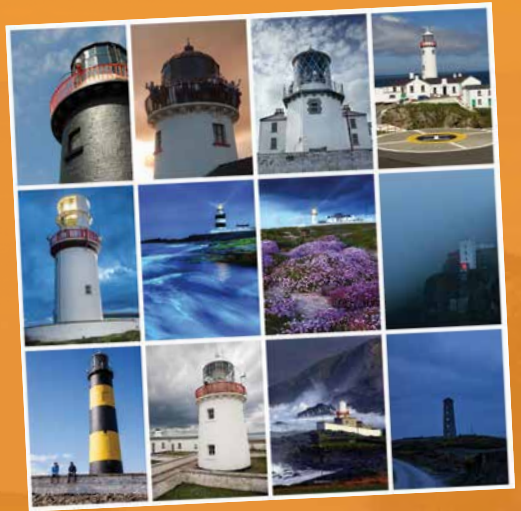
Take our
2-minute online
feedback survey,
and you could win
this fantastic prize.

This Daily Adventure guide provides you with lots of great ideas on things to do, see and enjoy during your Ireland holiday. We encourage and welcome reader feedback and, therefore, if you take our 2-minute **online survey** you will have a chance of winning a wonderful Lighthouse Holiday Break for up to 5 people sharing at a choice of locations around Ireland.

Take the Survey and Win

Our feedback survey will take you no more than 2 minutes to complete, and you can do so online via www.YourDailyAdventure.com/enter, OR you can scan the QR code above.

You must complete the online survey no later than **Friday, October 9, 2020**.



The Prize

A Stay at an Amazing Irish Lighthouse

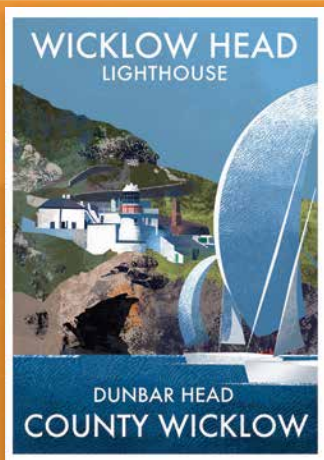
Great Lighthouses of Ireland features 14 amazing lighthouses perched high in dramatic locations around Ireland's stunning coastline. They are wonderful to visit, and visitors can also stay at eight of these lighthouses.

See www.GreatLighthouses.com.

The lucky winner, selected from those completing our survey, will get to enjoy an exhilarating 3-night stay, for up to 5 people sharing, at their choice of lighthouse locations. The prize break must be availed of within 12 months of winning.



Great Lighthouse of Ireland



10 posters to be won

Every entry will be entered in a draw to win one of 10 fabulous posters by award-winning author and illustrator, Roger O'Reilly. The collection of almost 90 lighthouses of Ireland is available on www.IrelandPosters.ie As shown here the posters capture the uniqueness of each lighthouse setting. They are great for framing and bring wild and natural Ireland into any room where they hang.

Winners of the posters will also be selected on Friday, October 16, and they can select which lighthouse poster they wish to receive as their prize from IrelandPosters.ie.

Terms and Conditions

- You must be aged 18 or over to participate.
- The survey must be completed online no later than Friday, October 9, 2020.
- The survey may only be completed once. Entering more than once will disqualify from the opportunity to win the prize.
- One lucky winner will be selected from the survey returns and will be selected on Friday, October 16, 2020.
- The '3-night Lighthouse Holiday Break' must be availed of within 12 months of winning the prize (dates subject to availability at the selected lighthouse).

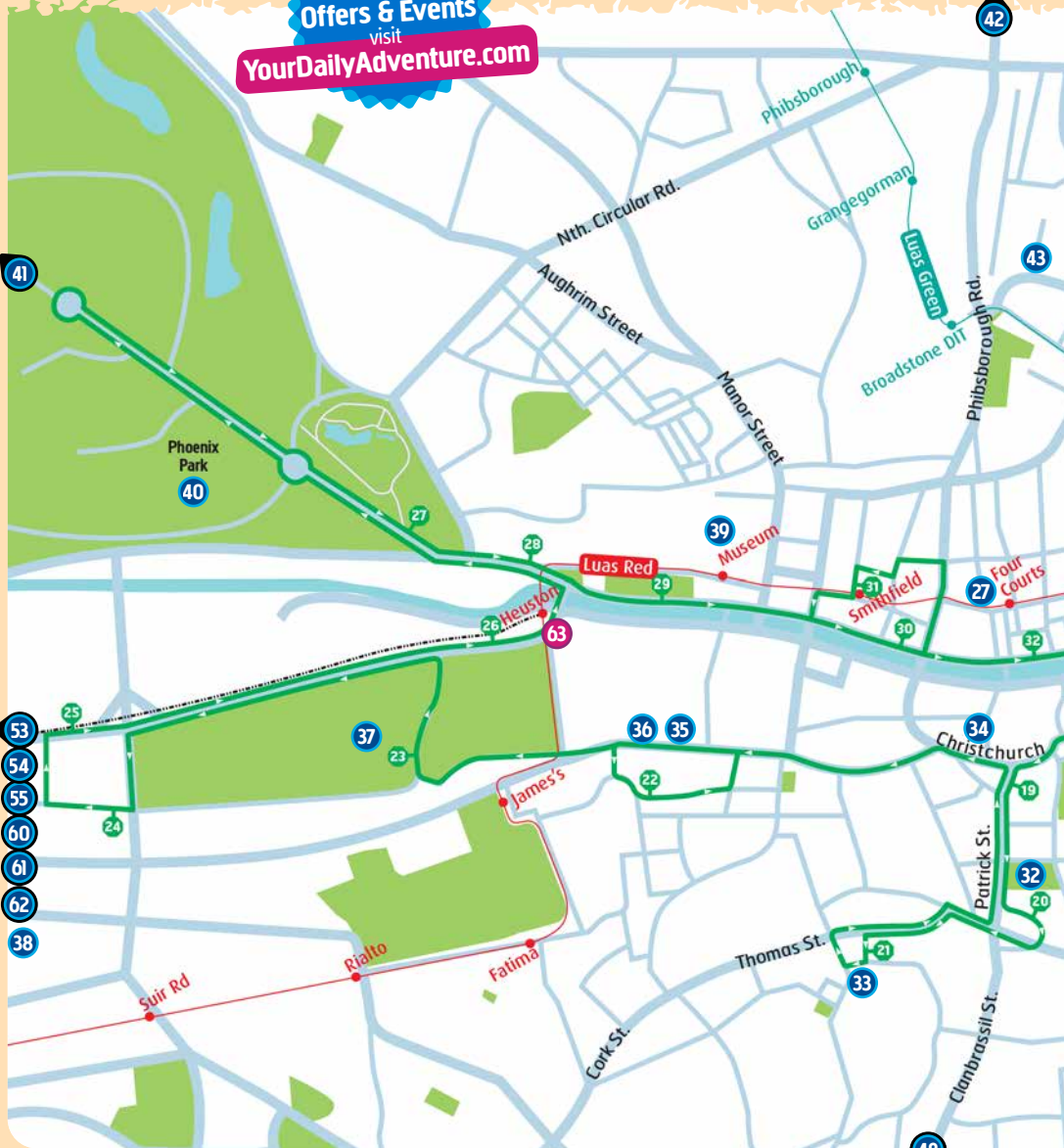
Welcome to Ireland's East and Dublin

Contents



For details on
Attraction
Offers & Events
visit
YourDailyAdventure.com

Ref	Attraction	See page...
1	DoDublin Bus Tours	8
2	Hugh Lane Gallery	8
3	Garden of Remembrance	9
4	Mountjoy Square	9
5	Daniel O'Connell Monument	10
6	The Custom House	10
7	Epic The Irish Emigration Museum	11
8	Dublin Docklands	12
9	Famine Memorial	12
10	Dublin Bay Cruises	13
11	Science Gallery	14
12	National Gallery of Ireland	15
13	Merrion Square	15
14	Oscar Wilde Statue	16
15	Government Buildings	16
16	National Museum, Natural History	17
17	National Museum, Archaeology	17
18	National Library of Ireland	18
19	RHA Gallery	18
20	St. Stephen's Green	19
21	The Iveagh Gardens	19
22	Mansion House	20
23	Grafton Street	20





Sustainable printing practices implemented. Please **pass on** or **recycle** when finished.

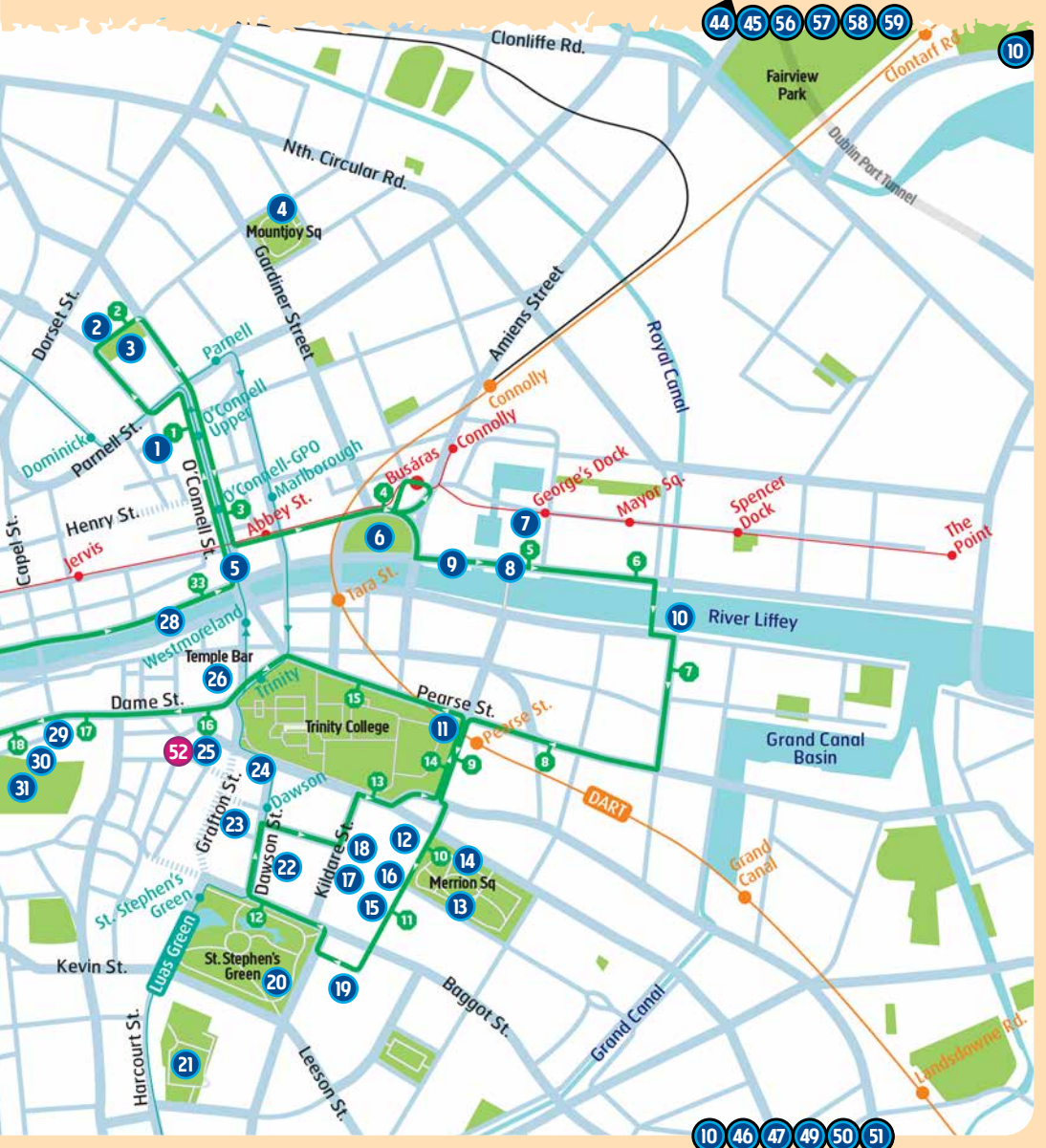
Ref	Attraction	See page...
24	Irish Whiskey Museum	21
25	Molly Malone Statue	21
26	Temple Bar	22
27	The Four Courts	23
28	Ha'penny Bridge	23
29	Dublin City Hall	24
30	Dublin Castle	24
31	Chester Beatty	25
32	Saint Patrick's Cathedral	25
33	Teeling Whiskey Distillery	26
34	Dublinia	26
35	Roe & Co Distillery	27
36	Guinness Open Gate Brewery	27
37	Irish Museum of Modern Art	28
38	Richmond Barracks	28
39	National Museum, Decorative Arts	29
40	Phoenix Park	30
41	Farmleigh	30
42	Glasnevin Cemetery Museum & Guided Tours	31
43	Blessington Street Basin	31
44	Butlers—The Factory Tour	32
45	Howth	32

Ref	Attraction	See page...
46	Dalkey	33
47	Killiney	33
48	Zipit Forest Adventures	34
49	Imaginosity, Dublin Children's Museum	35
50	Wicklow's Historic Gaol	35
51	Powerscourt Distillery	36
52	Day Tours of Wicklow	36
53	The Round Tower Clondalkin	37
54	Kildare Town	37
55	Newbridge Silverware Visitor Centre	38/39
56	Discover Boyne Valley	40
57	Trim Heritage Town	40
58	Old Mellifont Abbey	41
59	Carlingford Lough Ferry	42
60	The Old Rail Trail Greenway	43
61	Belvedere House, Gardens and Park	44
62	Tullynally Castle and Gardens	44
63	Day Trip to House of Waterford Crystal	45

Around Dublin Map of Attractions & A-Z Index 46/47



Look for the DoDublin Hop on Hop off Tour stops on the features throughout the guide





DoDublin Bus Tours

Dublin City

Discover Dublin's Best Sites with DoDublin Tours!

Explore the best of Dublin with a 24 or 48 hour DoDublin Hop-on Hop-off tour. The multi-award winning green bus tour has more than 30 stops around the city with live commentary from your DoDublin guide along the way. See the city like a local while exploring world-famous landmarks such as EPIC—The Irish Emigration Museum, the Guinness Storehouse, Teeling Whiskey Distillery, St Stephen's Green, and Dublin Castle.

With your DoDublin ticket, you will receive discounts to Dublin's favourite attractions and restaurants, including a FREE Dublin Walking Tour, and FREE



admission to the Little Museum of Dublin at St. Stephen's Green.

Once you have explored the city, see the stunning Dublin coastline, which lies just outside the city on a DoDublin Day Tour. See historic Malahide Castle & Howth, or travel south of the city to Wicklow and visit Glendalough & Powerscourt Gardens.

Visiting 161



Contact
DoDublin Tours
59 Upper O'Connell Street
Dublin 1, D01 RX04
Tel: 01-844 4265
Info@dodublin.ie
www.dodublin.ie



Location
The DoDublin bus tour can be joined at any of the 30 stops located around the city. The tour begins at Dublin Bus Head Office on O'Connell Street



Tour Times
From 09:00h



Public Transport
DoDublin Bus Tour can be joined at any of the 30 stops around the city



Admission Rates
24hr from €20, 48hr from €24
Student and Senior Discount available
Save €5 when you purchase two different DoDublin Tours!
Buy your tickets online at dodublin.ie

Tickets available from:
City Centre: Dublin Bus, 59 Upper O'Connell Street, Dublin 1
Ticket Agents & City Centre Newsagents
Dublin Airport: Bus & Travel Information Desk, T1 Vending Machines at Airlink Bus Stops
Online: dodublin.ie



Hugh Lane Gallery

Dublin City

An oasis of calm in a bustling city



Visit the Hugh Lane Gallery to experience a world class collection of modern and contemporary art in the heart of Dublin City. Here you can look inside the renowned Francis Bacon's Studio and see works by Manet, Monet, Renoir and Degas alongside works by leading Irish and international

contemporary artists. The Gallery is a calm space where visitors can relax while enjoying the City's art collection and temporary exhibitions, rest in the café and browse the bookshop.

In 2020 Francis Bacon's Studio and a section of the Gallery is closing for refurbishment. However, highlights of the Gallery's collection and exciting exhibitions will continue to be on show. For a full list of programmes and events, visit www.hughlane.ie.

Visiting 162



Contact
Hugh Lane Gallery
Charlemont House, Parnell Square Nth
Dublin 1, D01 F2X9
Tel: 01-222 5550
info.hughlane@dublincity.ie
www.hughlane.ie



Location
In the heart of Dublin, minutes walk from O'Connell Street



SatNav: Latitude/Longitude
53.3540, -6.2645



Public Transport
Bus: 1, 11, 13, 16, 38A, 46A, 123
Luas (Green): Parnell, O'Connell Upper
DART: Connolly, Tara Street



Opening Times
Tues to Thurs 09:45–18:00h
Fri 09:45–17:00h
Sat 10:00–17:00h
Sun 11:00–17:00h
Closed Mondays



Admission Rates
Free admission



Information
Café and bookshop are open during Gallery hours



Parking
City Centre on-street pay & display



Garden of Remembrance

Dublin City

Discover the Children of Lir in the Garden

This beautiful garden in the heart of the city was designed by Daithi Hanly and dedicated to the memory of all those who gave their lives in the cause of Irish Freedom.

Its focal point is a large sculpture of the Children of Lir by Oisín Kelly, symbolising rebirth and resurrection, added in 1971.

The garden is intended as a place of quiet remembrance and reflection.

It is located in the northern fifth of the former Rotunda Gardens in Parnell Square (formerly Rutland Square), a Georgian Square at the northern end of O'Connell Street.



Visiting



Contact
Garden of Remembrance
Parnell Square East
Dublin 1, D01 A0F8
Tel: 01-821 3021
superintendent.park@opw.ie
www.heritageireland.ie



Location
At the top of O'Connell Street, Dublin City Centre



SatNav: Latitude/Longitude
53.3540, -6.2634



Public Transport
Bus: 11, 13, 40
Luas (Green): Dominick
Dart: Connolly



Opening Times
Apr to Sept, Daily: 08:30–18:00h
Oct to Mar, Daily: 09:30–16:00h
Gardens open Christmas Day 11:00 – 13:00h



Admission Rates
Free admission



Parking
City Centre on-street pay € display



Mountjoy Square

Dublin City

Georgian Garden Square



Once Dublin's premier Georgian area, Mountjoy Square has been home to some of Ireland's most prominent figures such as Arthur Guinness, writer James Joyce and playwright Séan O'Casey who set his "Dublin Trilogy", including "The Shadow of a Gunman", in the area.

Dáil meetings from 1919-1921. Much of the Oscar-winning film "Once" was filmed in Mountjoy Square.

The Mountjoy Square park contains playing areas for football, basketball and table tennis, playgrounds for children and a green park area.

Many historic meetings have taken place in Mountjoy Square such as the Easter Rising preparations and was the scene of the first and second

Visiting



Contact
Mountjoy Square
Dublin 1



Location
Located 1km from O'Connell Street



SatNav: Latitude/Longitude
53.3564, -6.2578



Public Transport
Bus: 7, 7b, 8, 122
Luas (Green): Parnell
DART: Connolly Station



Opening Times
Open year round



Information
Free admission



Parking
Paid street parking





Daniel O'Connell Monument

O'Connell Street, Dublin City

The Liberator

Often referred to as 'The Liberator' or 'The Emancipator', O'Connell was an Irish political leader in the early 19th Century. He campaigned for Catholic Emancipation and the right for Catholics to sit in the Westminster Parliament - which had been denied for over 100 years.

In 1882, the statue of O'Connell was unveiled. It was made by the Irish sculptor John Henry Foley who also designed the Prince Albert Memorial statue in London.

In the 20th Century the principal street in Dublin city's centre was renamed O'Connell Street in his honour, after the Irish Free State came into being. According to his wishes, his



heart is buried in Rome and his body beneath a Round Tower at Dublin's Glasnevin Cemetery.

Visiting 163



Contact
Daniel O'Connell Monument
O'Connell Street, Dublin City

Location
O'Connell Street near O'Connell Bridge

SatNav: Latitude/Longitude
53.3477, -6.2593

Public Transport
Bus: 1, 11, 122 or 747
Luas (Red): Abbey Street
Luas (Green): O'Connell GPO
DART: Tara Street



The Custom House

Dublin City

James Gandon's first large scale commission

The Custom House is one of the most stunning buildings on the north bank of the Liffey and is a telling example of Irish History, Warfare and Restitution. A neoclassical 18th century building which today houses Irish Government departments.

Originally designed by James Gandon in 1781 it was burnt

down during the War of Independence in 1921 by the Irish Republican Army in an attempt to disrupt British rule in Ireland.

After the Anglo-Irish Treaty, it was restored according to its original design by the Irish Free State Government.



Visiting 164



Contact
The Custom House
Custom House Quay
Dublin 1, D01 W6X0
Tel: 01-888 2000
www.housing.gov.ie

Location
North bank of the River Liffey on Custom House Quay between Butt Bridge and Talbot Memorial Bridge
5 mins walk from O'Connell Bridge

SatNav: Latitude/Longitude
53.3484, -6.2531

Public Transport
Luas (Red): Busaras

Parking
Abbey Street multi-storey carpark





EPIC The Irish Emigration Museum

The CHQ Building, Custom House Quay, Dublin 1



A journey through Irish history and its impact on the world

EPIC The Irish Emigration Museum is a state-of-the-art interactive experience located in the CHQ Building at one of Dublin's most historic locations in Dublin's Docklands, the original departure point for so many of Ireland's emigrants.

Featuring personal stories of love, triumph, adventure and adversity, it highlights and celebrates the positive impact and influence of Irish emigrants around the world. It will inspire and guide you on a journey to discover the stories of Irish emigration from early times to the modern day. You will learn how the people of a small island made a big impact on the world.

The state-of-the-art touchscreen technology in the museum makes the EPIC experience an accessible, fun and educational

way for visitors to learn about Irish history, culture and people.

Europe's Leading Tourist Attraction

Described as one of Ireland's National Treasures, EPIC was named Europe's Leading Tourist Attraction in the 2019 World Travel Awards.

Explore your Irish Heritage

Find out more about your Irish heritage at the Irish Family History Centre located at EPIC. Genealogy experts help visitors delve into their family past.

Enjoy your visit

EPIC is wheelchair and buggy accessible. Download a FREE audio app on the App Store or Google Play by searching EPIC Museum.

Jeanie Johnston

While at Custom House Quay, enhance your EPIC experience by visiting The Jeanie Johnston Famine Ship. Embark on a remarkable voyage of despair, hope, endurance and triumph against all odds. Hear the harrowing tale of the Irish emigrants who fled the Famine and embarked on a treacherous voyage in the hope of a better life in North America. See www.jeaniejohnston.ie



Visiting



Contact

EPIC The Irish Emigration Museum
The CHQ Building, Custom House Quay
Dublin 1, D01 R9Y0
Tel: 01-906 0861
info@epicchq.com
www.epicchq.com



Location

In Dublin's Docklands, only 12-minute walk from Trinity College and on all of the Hop On, Hop Off bus routes



SatNav: Latitude/Longitude
53.3488, -6.2460



Public Transport

Bus: 15, 15a, 15b, 27, 41x, 142
Luas (Red): George's Dock
DART: Connolly Station/Tara Street Station



Opening Times

EPIC is open 7 days a week all year round from 10:00-18:45h (last entry 17:00h). Closed Dec 24-26



Admission Rates

Adult €16.50, Senior/Student €15
Combo ticket (EPIC + Irish Family History Centre) €28, Child (6-15) €8
Child (0-5) Free, Family (2+2) €40



Information

The EPIC Museum Gift Shop features a variety of gifts including unique Irish souvenirs, clothing, books, skincare, fragrances, confectionery and jewellery by Irish designers. The CHQ building also offers a wide range of great cafes and restaurants



Parking

Pay parking is available nearby in Park Rite located to the rear of the Hilton Garden Inn Hotel, Custom House Quay, Dublin 1. Parking enquiries should be made directly to Park Rite





Dublin Docklands

Docklands, Dublin City

A thriving cultural centre in the heart of Dublin



Experience the diversity in Dublin's Docklands starting with a walk, cycle or boat trip along the river to take in the modern architecture and iconic Dublin landmarks including the Samuel Beckett Bridge, the Famine statues, the Diving Bell and the Convention Centre. Kayaking, wake boarding and

other water sports are just some of the outdoor activities on offer in this historic part of Dublin. Side by side with the financial and technology firms, you will discover bustling entertainment venues, museums, pubs, restaurants, waterfront cafés and rooftop bars.

Visiting 165



Contact
Dublin Docklands
Docklands, Dublin City
Tel: 01-818 3300
www.dublindocklands.ie



Location
Between the River Liffey and the Grand Canal



SatNav: Latitude/Longitude
53.3437, -6.2384



Public Transport
Bus: 56a or 77a
Luas (Red): Spencer Dock
DART: Grand Canal



Famine Memorial

Dublin City

Poignant reminders of the Great Famine



The Famine statues on Custom House Quay were designed and crafted by renowned Dublin sculptor Rowan Gillespie in 1997. The ragged figures of starving men, women and children are both haunting and unforgettable. The location of these sculptures is of particular importance since one of the

first voyages of the Famine period departed from this quay in 1846. To see what life was like on-board at this time, visit the Jeanie Johnston Famine Ship located near this memorial and take a guided tour of a replica ship from this period. See www.jeaniejohnston.ie for details.

Visiting 165



Location
Located on Custom House Quay



SatNav: Latitude/Longitude
53.3480, -6.2501



Public Transport
Bus: 15a, 15b, 33x, 142, 151
Luas (Red): Georges Dock
Dart: Tara Street



Dublin Bay Cruises

Dublin City, Howth and Dun Laoghaire



Ireland's Premier Cruise

The ultimate experience of Dublin's natural & built environment.

Experience the breath taking views and clear fresh air of Dublin Bay on board the MV St. Brigid. Travel out of the city to the beautiful seaside towns of Howth & Dun Laoghaire, and along the way you will experience the many sights & sounds of Dublin from this unique vantage point. Sail on Dublin's historic River Liffey, which was home to the Vikings and the famous Guinness ships, and is recognised as the most relaxing way to experience Dublin city. Enjoy a beer, a glass of wine or a coffee as you feast your eyes on the beautiful views and historic sites around Dublin Bay. Depending on which voyage you choose you will view some of Ireland's most significant and historical landmarks, including Dublin Port, East Link Bridge, Dublin

Docklands and Ireland's New Convention Centre, the James Joyce Martello Tower, Dalkey Island, Killiney Bay, the Baily Lighthouse, Howth Head, Ireland's Eye, Howth Harbour, Captain Bligh's Bull Wall and Bull Island. With six sailings daily, this is the perfect way to experience all of Dublin's best attractions. Book on line at www.dublinbaycruises.com and use code ADVENTURE10 for 10% off.

Friendly, helpful staff will be delighted to welcome you on board.



Sailing Times

Cruise No.	Time	Route
1	09:30	Dun Laoghaire to City Centre
2	11:00	City Centre to Dun Laoghaire
3	11:00	City to Howth (via Dun Laoghaire)
4	12:30	Dun Laoghaire to Howth
5	14:20	Howth to Ireland's Eye (return)
6	15:30	Howth to City Centre (direct)*
7	15:30	Howth to Dun Laoghaire**
8	17:00	City Centre to Dun Laoghaire*
9	17:30	Dun Laoghaire to Dalkey Island (return)**

*Monday to Friday only

**Saturday and Sunday only

Visiting 67

Contact

Dublin Bay Cruises
Tel: 01-901 1757
booking@dublinbaycruises.com
www.dublinbaycruises.com

Location

City Centre Sir John Rogerson's Quay (Opposite Convention Centre, outside the Ferryman's Pub), Eircode D02 E448
Howth West Pier Howth Harbour Eircode D13 H2V4
Dun Laoghaire East Pier Dun Laoghaire Harbour, Eircode A96 V6K0

SatNav: Latitude/Longitude

City Centre 53.3462,-6.2402
Howth 53.3900,-6.0708
Dun Laoghaire 53.2942,-6.1288

Public Transport

CITY CENTRE
Bus: 15A/15B Sir John Rogerson Quay Luas (Red): Mayor Square
Dart: Tara Street

HOWTH

Bus: 31 Howth Marina
Dart: Howth

DUN LAOGHAIRE

Bus: 7 / 46A Dun Laoghaire
Dart: Dun Laoghaire

Sailing Times

See details in the Sailing Times panel

Admission Rates

Book online and use code ADVENTURE10 for 10% off
www.dublinbaycruises.com

Parking

Public Pay & Display at each location





Science Gallery

Dublin City



Where art and science collide

In 2008, a forgotten corner of Trinity College Dublin was transformed into a living experiment called Science Gallery Dublin. Through a cutting-edge programme that ignites creativity and discovery where science and art collide, Science Gallery Dublin encourages young people to learn through their interests.

Since opening in 2008, over three million visitors to the nonprofit gallery have experienced 43 unique exhibitions, ranging from design and violence to light and love, and from contagion and biomimicry to the futures of the human species and play.

There is an ever-changing programme of exhibitions and events fuelled by the expertise of scientists, researchers, students, artists, designers, inventors, creative

thinkers and entrepreneurs. The focus is on providing programmes and experiences that allow visitors to participate and facilitate social connections, always providing an element of surprise.

Unlike most galleries, there isn't a permanent collection, which means there is always something new to see, but it does mean that between exhibitions, only the shop and café are open. Updates are available on www.dublin.sciencegallery.com



Visiting 16 14



Contact

Science Gallery
Pearse Street, Trinity College
Dublin 2, D02 CP49
Tel: 01-896 4091
info@dublin.sciencegallery.com
www.dublin.sciencegallery.com



Location

At the Pearse Street entrance of Trinity College, opposite The Academy Building, and around the corner from Westland Row & Dublin Pearse station



SatNav: Latitude/Longitude
53.344163,-6.250191



Public Transport

Bus: 1, 44, 47, 56A, 77A
Luas (Green): Trinity
Dart: Dublin Pearse



Opening Times

During Exhibitions: Check website for times of Exhibitions when running
Café open daily 08:00–16:00h
Shop open daily 09:00–17:00h



Admission Rates

Free with a suggested donation



Parking

Nearest 24hr car park is on Fleet Street



National Gallery of Ireland

Dublin City

Escape from the city



For 361 days a year the National Gallery of Ireland inspires, delights and entertains with tours, workshops, lectures and events, all for free. The Gallery houses the nation's collection of European and Irish art from about 1300 to the present day, and boasts a rich and varied programme

of world class exhibitions throughout the year. Discover Irish design at the Gallery Shop. Or enjoy a cup of tea and a slice of cake in the Gallery Café, a unique architectural space that is part 18th-century Georgian townhouse and part 19th-century ballroom.

Visiting



Contact

National Gallery of Ireland
Merrion Square West
Dublin 2, D02 K303
Tel: 01-661 5133
info@ngi.ie
www.nationalgallery.ie



Location

Located in the heart of Georgian Dublin, the Gallery is easily accessible on foot and by public transport



SatNav: Latitude/Longitude

53.3410, -6.2525



Public Transport

Bus: 4, 7, 8, 39A, 67
Luas (Green): Dawson
DART: Dublin Pearse



Opening Times

Mon & Sun 11:00–17:30h
Tues to Sat 09:15–17:30h
Thurs 09:15–20:30h



Admission Rates

Free admission



Information

Gallery Café serves breakfast, lunch and cakes. Discover Irish design at the Gallery Shop



Parking

Metered parking on Merrion Square



Merrion Square

Dublin City

The Park of the Privileged



Construction of Georgian houses at Merrion Square began in 1762. A fashionable address for the aristocracy the park was purchased in 1930 as a site for a cathedral. The project never materialized and in 1974 it was transferred to the city for public use.

The park includes sculptures; the Rutland Memorial; a collection of old Dublin lamp posts; a floral garden; heather garden, playground and coffee stand.

Around the park are notable attractions including the National Gallery and National Museum – Natural History.

Merrion Square also has many associations with significant figures in Ireland's political and cultural history, among the many famous residents who have lived on Merrion Square are Daniel O'Connell, Oscar Wilde and William Butler Yeats. The bookshop at No 8 Merrion Square is the largest stockist of architectural publications in Ireland.

Visiting



Contact

Merrion Square, Dublin 2, D02 E778
Tel: 01-661 2369
info@merrionsquare.ie
www.merrionsquare.ie



Location

Park faces entrance to National Gallery and National Museum — Natural History



SatNav: Latitude/Longitude

53.33972, -6.24916



Public Transport

Bus: 4, 7, 8, 26, 39, 39A, 66, 67
Luas (Green): Dawson
Dart: Dublin Pearse



Opening Times

Open daily, year round from 10:00h
Closing hours change with daylight. The park can close from as early as 17:00h in the winter, to as late as 21:30 / 22:00h in the months of May to August



Information

Playground, coffee stand



Parking

City Centre on-street pay & display





Oscar Wilde Statue

Merrion Square, Dublin City

Irish Author, Playwright & Poet



One of Ireland's best known writers, poets and wits, Oscar Wilde's extremely realistic statue is located in the north-west corner of the Merrion Square Park close to his childhood home, 1 Merrion Square. The building is now occupied by the Irish American University and is open to the public.

Wilde is best known for such literary classics as "The Picture

of Dorian Gray" and "The Importance of Being Earnest" which have since been made into films; in addition to his dramatic and flamboyant personal life.

The statue features many famous witty quotes from Wilde's works.

Visiting 16 11



Contact
Oscar Wilde Statue
Merrion Square, Dublin City
www.merrionsquare.ie



Location
In the northwest corner of Merrion Square, Dublin 2



SatNav: Latitude/Longitude
53.3406, -6.2505



Public Transport
Bus: 25, 25a, 25b, 26, 66, 66a, 66b or 67
Luas (Green): Dawson
DART: Pearse Station



Government Buildings

Dublin City

The Government of Ireland



The imposing complex of Government Buildings on Upper Merrion Street was undertaken by the British administration in Ireland.

It was designed for two new government departments, the Local Government Board and

the Department of Agriculture and Technical Instruction, as well as the Royal College of Science, then housed in 51 St. Stephen's Green.

Fortuitously, the complex was completed in March 1922, and was available immediately to be occupied by the new Irish Free State Government.

(Please note that visiting arrangements are subject to cancellation on short notice. Telephone ahead to avoid disappointment)

Visiting 16 10



Contact
Government Buildings
Upper Merrion Street
Dublin 2, D023 K728
Tel: 01-645 8813 or 01-619 4116
www.heritageireland.ie



Location
Beside the Merrion Square West entrance to Leinster House



SatNav: Latitude/Longitude
53.3389, -6.2529



Public Transport
Bus: 7, 7A, 8
Luas (Green): Dawson
DART: Dublin Pearse



Opening Times
Open Sat only: 10:30–13:30h
Tours start every hour on the half hour
Average length of visit is 40 minutes



Admission Rates
Free Admission
Access is by guided tour only, maximum number: 20
Free tickets can be collected on the day from the National Gallery of Ireland Merrion Square West, Dublin 2, from 10:00h



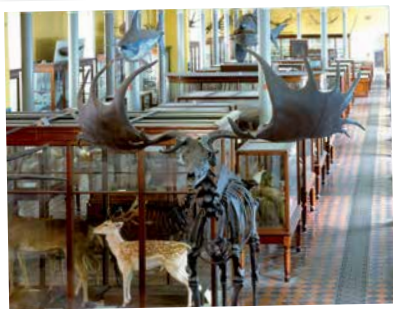
Parking
City Centre on-street pay £ display



National Museum of Ireland—Natural History

Dublin City

Galleries of animals from Ireland and overseas



Built in 1856, the National Museum of Ireland—Natural History is a magnificent Victorian artefact in its own right. Sometimes described as 'a museum of a museum', it houses a wide-ranging and comprehensive zoological collection of more than 10,000 exhibits. Visitors can explore

Irish mammals, birds, fish and insects, as well as mammals from around the world.

Highlights include imposing skeletons of Ireland's extinct giant deer and a huge, basking shark suspended from the ceiling. The aptly named Wonder

Cabinet allows visitors to get up-close to museum objects with a fascinating handling collection.

The museum offers a year-round programme of workshops, talks and tours for all ages. There is also a gift shop onsite.

Admission Free

Visiting



Contact

National Museum of Ireland
Merrion Street, Dublin 2, D02 F627
Tel: 01-677 7444
marketing@museum.ie
www.museum.ie



Location

Located in the heart of Georgian Dublin



SatNav: Latitude/Longitude
53.3396, -6.2525



Public Transport

Bus: see www.dublinbus.ie
Luas (Green): St. Stephen's Green, Dawson, Trinity
DART: Dublin Pearse



Opening Times

Tuesday to Saturday: 10:00–17:00h
Sunday to Monday: 13:00–17:00h
Closed Christmas Day and Good Friday



Admission Rates

Free admission



Parking

City Centre on-street pay & display



National Museum of Ireland—Archaeology

Dublin City

National repository for all archaeological objects



The National Museum of Ireland—Archaeology is home to an extraordinary range of priceless and iconic treasures, including the Ardagh Chalice, the Tara Brooch and the famous Derrynaflan Hoard. From Prehistoric Ireland to

Ancient Egypt, visitors can see important archaeological artefacts dating from 7000 BC up to the 20th century.

Highlights include the world-famous Iron Age 'bog bodies', an exhibition of prehistoric Irish gold, and a section dedicated to an early medieval book of psalms known as the Faddan More Psalter.

The museum offers a year-round programme of workshops, talks and tours for all ages and a changing programme of temporary exhibitions on historical and contemporary themes.

There is also a café and gift shop onsite.

Admission Free

Visiting



Contact

National Museum of Ireland
Kildare Street, Dublin 2, D02 FH48
Tel: 01-677 7444
marketing@museum.ie
www.museum.ie



Location

Located in the heart of Georgian Dublin, near St. Stephen's Green



SatNav: Latitude/Longitude
53.3402, -6.2550



Public Transport

Bus: see www.dublinbus.ie
Luas (Green): St. Stephen's Green, Dawson, Trinity
DART: Dublin Pearse



Opening Times

Tuesday to Saturday: 10:00–17:00h
Sunday to Monday: 13:00–17:00h
Closed Christmas Day and Good Friday



Admission Rates

Free admission



Information

Museum Shop selling gifts, books, jewellery and replica items
Museum Café offering snacks and hot and cold drinks



Parking

City Centre on-street pay & display





National Library of Ireland

Dublin City

Where Ireland's story is an open book



The National Library of Ireland (NLI) is a must-visit cultural institution for any visitors to Dublin who are interested in exploring their family tree and finding out more about Ireland's rich history.

Enjoy lively events and exhibitions, consult the collections, avail of free genealogy advice and drop by the Library's café for a quick coffee or relaxing lunch. Particular highlights at the main

library building on Kildare Street are the NLI's award-winning **Yeats exhibition** and magnificent Victorian reading room.

Visit the Library's major **Seamus Heaney exhibition** (Mon to Sat 10am–4pm, last admission 3:30pm) which celebrates the life and works of one of Ireland's finest poets at the Bank of Ireland Cultural and Heritage Centre, Westmoreland Street.

The NLI's **National Photographic Archive** is located at Meeting House Square, Temple Bar and hosts a range of photographic exhibitions throughout the year.

All locations are FREE to visit and within walking distance of Grafton Street shopping area.

Visiting 1613



Contact

The National Library of Ireland
Kildare Street, Dublin 2, D02 P638
Tel: 01-603 0200
info@nli.ie
www.nli.ie



Dublin

Location

Library: Kildare Street. The National Photographic Archive: Temple Bar. Seamus Heaney Listen Now Again: Bank of Ireland Cultural and Heritage Centre, Westmoreland Street



SatNav: Latitude/Longitude

53.3412, -6.2544



Public Transport

Bus: 11, 37, 38, 39, 44, 46A
Luas (Green): Westmoreland
DART: Dublin Pearse



Opening Times

Library / Exhibition: Mon to Wed 09:30–19:45h, Thurs & Fri 'til 16:45h
Sat 'til 16:45h (Library closes 12:45h).
Sun 13:00–16:45h Exhib only. **Café:**
Mon to Fri 09:30–16:45h, Sat 'til 16:30h
Genealogy Advisory Service, Kildare Street: Mon to Fri 09:30–16:45h
NPA Exhibitions: Mon to Sat 10:00–17:00h. Sun 12:00–17:00h



Admission Rates

Library & exhibitions admission is free



Parking

On-street pay and display



RHA Gallery

Dublin City

Displaying established and rising artists



The Royal Hibernian Academy is an artist based and artist orientated institution dedicated to developing, affirming and challenging the public's appreciation and understanding of traditional and innovative approaches to the visual arts. The Academy has five galleries. Three on the first floor are

dedicated to curated exhibitions of Irish and International art.

The Academy mounts an annual open submission art show which it has organised since 1826.

The main gallery is 6,000 sq.ft with 17ft. ceilings and louvred daylight.

The Ashford Gallery on the ground floor, is designated to introducing artists, who do not have commercial representation in Dublin, to the collecting public and prove their commercial viability.

Visiting 1611



Contact

Royal Hibernian Academy
15 Ely Place, Dublin 2, D02 A213
Tel: 01-661 2558
info@rhagallery.ie
www.rhagallery.ie



Dublin

Location

In the heart of Dublin city, just minutes walk from St. Stephen's Green and Merrion Square



SatNav: Latitude/Longitude

53.3370, -6.2545



Public Transport

Bus: 39A, 46A, 145
Luas (Green): Dawson
DART: Dublin Pearse



Opening Times

Mon, Tues, Thurs, Fri, Sat 11:00–17:00h
Wed 11:00–20:00h
Sun 12:00–17:00h



Admission Rates

Free admission



Information

Coppa Café on-site



Parking

City Centre on-street pay & display



St. Stephen's Green

Dublin City

The largest of Dublin's main Georgian Squares



St. Stephen's Green is Ireland's best known Victorian Public Park and is adjacent to one of Dublin's main shopping streets, Grafton Street.

Covering 9 hectares the park has been maintained in the original Victorian layout, centred on a formal garden with plants providing

spectacular colour from early spring to late Autumn.

Over 3.5km of pathways are accessible for all users. A large lake fed by an artificial waterfall is home to ducks and other water fowl.

One of the more unusual aspects of the park is a garden for the blind with scented plants, which can withstand handling and are labelled in Braille.

A number of sculptures are located throughout the garden. There is also a children's playground and a bandstand where lunchtime concerts are performed during the summer.

Visiting

Contact

St. Stephen's Green
Dublin 2, D02 X309

Location

Dublin City Centre, at the top of Grafton Street

SatNav: Latitude/Longitude
53.3397, -6.2605

Public Transport

Luas (Green): St. Stephen's Green

Opening Times

Gardens open: Mon to Sat 07:30h
Sun and Holidays 09:30h
Gardens close according to daylight hours
Gardens open Christmas Day 09:30–12:30h

Information

Playground, garden for the visually impaired

Parking

City Centre on-street pay & display
St. Stephen's Green multi-storey carpark



The Iveagh Gardens

Dublin City

Hidden gem in Dublin's City Centre



The Iveagh Gardens are among the finest and least known of Dublin's Parks and Gardens. They were designed by Ninian Niven, in 1865, as an intermediate design between the 'French Formal' and the 'English Landscape' styles.

They demonstrated the artistic skills of the Landscape Architect of the mid 19th Century and

display a unique collection of landscape features which include Rustic Grotto's and Cascade, sunken formal panels of lawn with Fountain Centre Pieces, Wilderness, Woodlands, Maze, Rosarium,

American Garden, Archery Grounds, Rockeries and Rooteries.

The recently restored Cascade and exotic tree ferns all help to create a sense of wonder in the 'Secret Garden'.

The pre 1860s rose varieties add an extra dimension to the Victorian Rosarium.

Visiting

Contact

The Iveagh Gardens
Clonmel Street, Dublin 2
Tel: 01-475 7816
info@heritageireland.ie
www.iveaghgardens.ie

Location

City Centre. Access now from Hatch Street. Disabled access Clonmel Street and Hatch Street

SatNav: Latitude/Longitude
53.3360, -6.2621

Public Transport

Bus: 37, 44, 61, 46A, 145
Luas (Green): Harcourt

Opening Times

Mon to Sat: 08:00h
Sunday and Bank Holidays: 10:00h
Closing times are approximate
Late Nov & Mid Jan: 15:30h
Mid Jan & Nov: 16:00h
Mar to Oct: 18:00h
Average length of visit: 1 hour

Admission Rates

Free admission

Parking

City Centre on-street pay & display





Mansion House

Dublin City

The Lord Mayor's Residence

The Mansion House was built in 1710 by the merchant and property developer Joshua Dawson, for whom Dawson Street is named. Dublin Corporation purchased the house in 1715 for assignment as the official residence of the Lord Mayor. It retains this purpose to this day.



of Dail Eireann and Seanad Eireann assembled here and was addressed by the then President of Ireland, Eamon de Valera. Also notable is the large dining room, where the cabinet of the Irish Republic met on occasion under President Eamon de Valera.

The Mansion House's most famous features include the "Round Room", where the First Dail assembled on 21 January 1919 to proclaim the Irish Declaration of Independence. On 21 January 1969 a special fiftieth anniversary joint session

Visiting



Contact
Mansion House
Dawson Street
Dublin 2, D02 AF30
Tel: 01-222 6200



Location
Dawson Street is located just off St. Stephen's Green



SatNav: Latitude/Longitude
53.3403, -6.2583



Public Transport
Bus: 4, 7, 8, 11, 46A, 145, 37, 38, 39, 44
Luas (Green): Dawson



Parking
Kildare Street multi-storey carpark



Grafton Street

Dublin 2

Ireland's Most Famous Shopping Street



Trinity College. Home to many unique Irish retailers such as Brown Thomas and Bewley's Grafton Street Café, it caters for both the high-end and the high street shopper. The street is also home to world renowned buskers and has become known as a launch pad

for many musicians, including Bono!

With a host of cafés, bars and restaurants, no visit to Dublin should be without a trip to Grafton Street.

Grafton Street, named after Henry Fitzroy—the first Duke of Grafton and the illegitimate son of Charles II of England, is Ireland's most famous shopping street. It runs from St. Stephen's Green to College Green near

Visiting



Location
Dublin city centre



SatNav: Latitude/Longitude
53.3423, -6.2594



Public Transport
Bus: All city centre bound buses
Luas (Green): St. Stephen's Green



Information
Range of shopping, restaurants, cafés & bars



Parking
Multi-storey car parks available
St. Stephen's Green



Irish Whiskey Museum

Dublin City

Discover the Story of Irish Whiskey



The Irish Whiskey Museum is the home of everything Irish whiskey! It runs daily guided tours and interactive tastings of a wide variety of Irish whiskeys. Independent of all whiskey distilleries, there are over 100 different types of Irish whiskey in the building. Their trained whiskey experts, who are

born storytellers, talk through over 2000 years of Irish whiskey history.

Join them for a tour, where each of the 4 different rooms is themed to represent a different period in Irish history. Finish the tour by becoming

a true whiskey connoisseur with a tasting of 3 (Classic) or 4 (Premium) different Irish whiskeys. Other experiences, such as the Whiskey Blending Experience and the Whiskey and Brunch experience are also available.

Visiting

Contact

Irish Whiskey Museum
119 Lower Grafton Street
Dublin 2, D02 X588
Tel: 01-525 0970
info@irishwhiskeymuseum.ie
www.irishwhiskeymuseum.ie

Location

One of the most central visitor attractions in Dublin. All public transport will leave you within walking distance

SatNav: Latitude/Longitude
53.3442, -6.2595

Public Transport

Bus: 4, 11, 13, 37, 39a, 46a, 65
Luas (Green): Trinity/Westmoreland
DART: Dublin Pearse

Opening Times

Daily Tours 10:00–18:00h
McDonnell's Bar open late Fri to Sun

Admission Rates

Adult €20, Senior/Student €18
Child (5–12yrs) €10, Family (2+2) €50
Group (10+) €17pp

Information

Full bar and whiskey store on-site.
Ticket not required to gain access

Parking

Paid parking nearby



Molly Malone Statue

Dublin City

“In Dublin’s Fair City”



Created by Jeanne Rynhart in tribute to the famous song of the fictional fishmonger, Molly Malone who plied her trade on the streets of Dublin, the Molly Malone statue was unveiled in Grafton Street during the Dublin Millennium celebrations by the 1988 Lord Mayor of

Dublin Ben Briscoe. She now resides in Suffolk Street in front of the Tourist Information Office.

The 13th of June is regarded as Molly Malone Day. The best-known version of the song is sung by the Dubliners.

Visiting

Location

On Suffolk Street right outside the Tourist Information office. D02 EH32

SatNav: Latitude/Longitude
53.3437, -6.2610

Public Transport

Bus: 9, 27, 56a, 68, 68a, 77a, 122, 123, 151
Luas (Green): St. Stephen's Green
Dart: Pearse Station





Temple Bar

Dublin City



Dublin's world famous Cultural Quarter

Temple Bar is the historic heart of Dublin. Today it is teeming with arts, culture and creativity—don't miss it!

There's something for everyone: outdoor markets, exhibitions, music, buskers, theatre, galleries, cafés, fine restaurants, a reptile shop, magicians, beautiful architecture, ancient cobbles, the old City Walls, Viking History, one of Europe's oldest theatres, loads of public art and even more surprises than we could possibly list here!

The name Temple Bar dates back to the 17th Century. The area takes its name from Sir William Temple who was elected Provost of the nearby

University of Dublin, Trinity College in 1609, and who built his home in Temple Bar.

In Temple Bar visitors can still see some of the original City Walls of Dublin which date from around the 12th Century.

Did you know that there are more than 70 specially commissioned works of public art located throughout Temple Bar?

Come on in and wander through the cobbled streets and laneways, be inspired by award-winning architecture and urban design and enjoy the magic of Temple Bar, Dublin's Cultural Quarter.

Temple Bar Markets

Welcome to market heaven! Temple Bar, Dublin's Cultural Quarter is the proud owner of three very different outdoor markets—Temple Bar Book Market, Temple Bar Food Market (pictured) and the Designer Mart at Cow's Lane. Although Dublin is not the luckiest place when it comes to good weather, a visit to the Temple Bar Markets on a dry sunny day is a must do. With food, books and designer goods on offer you are sure to find that special something.

Visiting 1617



Location
In the very heart of the City Centre on the south of the River Liffey between Westmoreland Street and Christchurch D02 EH42

All City Centre buses will take you close to Temple Bar. www.dublinbus.ie



SatNav: Latitude/Longitude
53.3455, -6.2631



Public Transport
Bus: 16, 123, 27, 13, 40
Luas (Red): Jervis
Luas (Green): Trinity and Westmoreland
DART: Tara Street



Parking
There are two multi-storey car parks located close to Temple Bar. They are located at Fleet Street and Christ Church



The Four Courts

Dublin City

Home of the Irish Law Courts



The Four Courts is Ireland's main courts building since the first case was heard in November 1796. Housing the Supreme Court, the High Court and the Dublin Circuit Court, it is the epicenter of the Irish legal system.

During the 1916 Easter Rising it was used as the headquarters

of Commandant Ned Daly and the 1st Battalion in the midst of some of the most intense fighting. Much of the building was destroyed during the Civil War in 1922 including the Irish Public Record Office, only reopening a decade later.

Visiting



Contact
The Four Courts
Inn's Quay
Dublin 7, D07 N972
Tel: 01-888 6000
www.courts.ie



Location
Located on Inn's Quay in Dublin city centre



SatNav: Latitude/Longitude
53.3456, -6.2735



Public Transport
Bus: 25, 25a, 25b, 25x, 26, 37, 39, 39a, 51d, 145
Luas (Red): Four Courts



Ha'Penny Bridge

Bachelors Walk, Dublin City

Crossing over the River Liffey



Built in 1816 in Shropshire England and originally named the Wellington Bridge after the Duke of Wellington, now known officially as the Liffey Bridge but affectionately as the Ha'Penny Bridge. The Ha'Penny is a pedestrian bridge that straddles the Liffey. It earned its name from William Walsh,

a ferryman who built the Bridge and charged a toll of one ha'penny to travellers for over 100 years. The bridge has a 43 metre span, is 3 metres in width and rises an elegant 3 metres above the river. Today over 30,000 pedestrians use the bridge daily.

Visiting



Location
Located on Bachelors Walk connecting it to Aston Quay



SatNav: Latitude/Longitude
53.3464, -6.2631



Public Transport
Bus: 25, 26, 37, 39, 51, 70, 145
Luas (Red): Jervis
Dart: Tara Street





Dublin City Hall

Dublin City

The story of the Capital



Beautifully restored to its original architectural splendour, Dublin City Hall is a truly historic setting which has witnessed many events related to the city and state. The sheer

size and sumptuous fittings of the spectacular entrance hall or Rotunda reflects the standing and prestige of Dublin in the late 18th century and is the perfect discreet location for a private function or wedding ceremony.

The superb vaults at lower ground floor level host a free multimedia exhibition highlighting key elements of the history

of Dublin and temporary exhibitions are introduced throughout the year. A charming café and gift shop on-site add to the ambience of this wonderful city treasure.

Visiting



Contact

Dublin City Hall
 Dame Street, Dublin 2, D02 NP93
 Tel: 01-222 2204
 cityhall@dublincity.ie
 www.dublincityhall.ie



Location

Located in Dublin's City Centre, near Temple Bar



SatNav: Latitude/Longitude

53.3438, -6.2671



Public Transport

Bus: 27, 54A, 56A, 77A, 123, 150, 151
 Luas (Red): Jervis
 Luas (Green): Dawson, Trinity
 DART: Tara Street or Dublin Pearse



Opening Times

Open year round
 Mon to Sat 10:00–17:00h
 Closed Sun and B/Hols



Admission Rates

Free



Information

Gift shop, Café, Wheelchair accessible



Parking

Paid on-street car parking nearby



Dublin Castle

Dublin City

Historic Dublin

Erected in the early thirteenth century on the site of a Viking settlement, Dublin Castle served for centuries as the headquarters of English, and later British, administration in Ireland. In 1922, following Ireland's independence, Dublin Castle was handed over to the new Irish government. It is now a major government complex and a key tourist attraction.

Open seven days a week from 9:45 to 17:45 (last admission at 17:15). Tickets can be purchased on site at the Castle's visitor reception desk in the State Apartments (upper courtyard). Visit the website for admission rates. Visitors must purchase tickets

to visit the State Apartments, Chapel Royal and Medieval Undercroft. The Dubh Linn Gardens are free of charge.



Visiting



Contact

Dublin Castle
 Dame Street, Dublin 2, D02 TN97
 Tel: 01-645 8813
 dublincastle@opw.ie
 www.dublincastle.ie



Location

Located just off Dame Street



SatNav: Latitude/Longitude

53.3431, -6.2675



Public Transport

Bus: 3, 40, 123, 27, 77A, 150, 151
 Luas (Red): Jervis
 Luas (Green): Dawson
 DART: Tara Street



Opening Times

Mon to Sun 9:45–17:45h
 (Last admission 17:15h)
 Closed Dec 25, 26, 27 & Jan 01



Admission Rates

Guided Tours
 Adult €12, Child (12–17 yrs) €6
 Senior/Student €10, Family (2+5) €30
 Self-Guided Tours
 Adult €8, Child (12–17 yrs) €4
 Senior/Student €6, Family (2+5) €20



Information

Ticket office in the State Apartments.



Parking

No parking on-site. Public car parks at Q-Park Christchurch & Park Rite Drury St.



Chester Beatty

Dublin City

Artistic treasures from around the world

With free admission and described by the Lonely Planet as not just the best museum in Ireland, but one of the best in Europe, the Chester Beatty is a must-see on any Dublin visitor's itinerary. As the only museum in Ireland to win "European Museum of the Year", this art museum's rich collections from countries across Asia, the Middle East, North Africa, and Europe open a window on the artistic treasures of the great cultures and religions of the world.

Manuscripts, miniature paintings, prints, drawings, rare books and decorative arts complete this amazing collection—all the result of the collecting activities of one



man—Sir Alfred Chester Beatty (1875–1968). Egyptian papyrus texts, beautifully illuminated copies of the Qur'an, the Bible, European medieval and renaissance manuscripts are among the highlights on display. In its diversity, the collection captures much of the richness of human creative expression from about 2700 BC to the present day.

Now open until 8pm on Wednesdays.

Visiting 1618

Contact

Chester Beatty
Dublin Castle, Dublin 2, D02 AD92
Tel: 01-407 0750
www.chesterbeatty.ie

Location

In the gardens of Dublin Castle, 2 mins walk from Dame Street and close to Christchurch Cathedral

SatNav: Latitude/Longitude
53.3422, -6.2671

Public Transport

Bus: 13, 40, 123, 27, 77a, 150, 151
Luas (Red): Jervis
Luas (Green): Trinity, St. Stephen's Green
DART: Tara Street

Opening Times

Mon, Tues, Thurs, Fri, Sat 09:45–17:30h
Wed 09:45–20:00h, Sun 12:00–17:30h
Closed Mondays Nov 01 to Feb 29,
Jan 01, Good Friday and Dec 24, 25 & 26

Admission Rates

Free admission

Information

Silk Road Café. Shop with a wide selection of books and gifts

Parking

City Centre on-street pay & display



Saint Patrick's Cathedral

Dublin City

Built in honour of Ireland's patron saint



Built in honour of Ireland's patron saint, Saint Patrick's Cathedral stands adjacent to the famous well where tradition has it Saint Patrick baptized converts on his visit to Dublin.

The parish church of Saint Patrick on this site was granted collegiate status in 1191 and raised to cathedral status in 1224. The present building dates from 1220. The

Cathedral is today the National Cathedral of the Church of Ireland (a church of the Anglican communion) and also serves as a popular tourist destination.

On view are a selection of artefacts related to Jonathan Swift, author of Gulliver's Travels and

Dean of the Cathedral from 1713–1745, including his epitaph, death mask, writings and parchment awarding him Freedom of the City of Dublin.

Perhaps more than any other building in Ireland, Saint Patrick's embodies the history and heritage of Irish people of all backgrounds from the earliest times to the present day.

Visiting 1620

Contact

Saint Patrick's Cathedral
Saint Patrick's Close
Dublin 8, D08 H6X3
Tel: 01-453 9472
info@stpatrikscathedral.ie
www.stpatrikscathedral.ie

Location

At the junction of Patrick St and Upper Kevin St, easy walk from city centre

SatNav: Latitude/Longitude
53.3395, -6.2722

Public Transport

Bus: 49, 54a, 151, 27, 56a, 77a, 15a
Luas (Green): St. Stephen's Green (5 min walk)
Luas (Red): Fatima (15 min walk)

Opening Times

Daily Mon to Fri 09:30–17:00h
Sat 09:00–18:00h (Mar to Oct)
Sat 09:00–17:00h (Nov to Feb)
Sun 09:00–10:30h, 12.30–14.30h and
Mar to Oct only 16.30–18.00h

Admission Rates

Adult €8, Senior/Student €7
Family (2+2) €18. Group rates available

Information

Get discounts on advance online bookings. Gift shop

Parking

Limited on-street car parking (Jury's is the nearest car park). Free coach parking



Teeling Whiskey Distillery

Dublin City

The Spirit of Dublin



Teeling Whiskey Distillery is Dublin's destination for whiskey fans and for anyone with an interest in Dublin's rich Irish whiskey history. Located in the heart of Dublin city centre, the Teeling Whiskey Distillery is the first operational distillery to open in Dublin in over 125 years and home to the Spirit of Dublin.

Experience first-hand the sounds, smells, feel and tastes

of a fully operational distillery. When released in 2018, Teeling Single Pot Still became the first new Dublin distilled Irish whiskey to be released for nearly 50 years, marking the true revival of the craft of distilling in the city. All tours

are fully guided by a Teeling Whiskey ambassador, finishing with a guided tasting of award winning Teeling whiskey.

A selection of exclusive Teeling Whiskey merchandise is available in the retail area including the facility to fill your own bottle of Teeling Whiskey direct from the cask or bring home your own personalised bottle of whiskey.

Visiting



Contact
Teeling Whiskey Distillery
13–17 Newmarket
Dublin 8, D08 KD91
Tel: 01-531 0888
book@teelingdistillery.com
www.teelingdistillery.com



Location
5 minutes from St. Patrick's Cathedral. By car from St. Stephen's Green: Drive northeast on St. Stephen's Green following the R138. Continue on the R138 before turning left onto St. Luke's Avenue (R110)



SatNav: Latitude/Longitude
53.3379, -6.2768



Public Transport
Bus: 151, 27, 56a, 77a,
Luas (Green): St. Stephen's Green
(15 mins walk)



Opening Times
Open 7 days from 10:00h
Tours every 20mins, last tour 17:40h



Admission Rates
Ticket price from €17 per person



Information
Gift Shop, Bar and Café open daily



Parking
Pay & Display on-street parking available



Dublinia

Dublin City

An unforgettable experience in historical Dublin



Dublinia is a museum that explores Viking and Medieval Dublin and is located at the heart of the historic city. Travel back and visit a Viking house, a Viking street, a medieval merchant's house and the medieval fair. Learn the history of the battle of Clontarf and of death and disease in medieval times.

See a range of amazing artefacts from the National Museum. Immerse yourself in a new audio-visual experience where you will take a flying visit over the Medieval city—a story of one man's life growing up in Medieval Dublin. Climb the 96 step original medieval tower of St. Michael for spectacular views of Dublin City.

Visiting



Contact
Dublinia
St. Michael's Hill, Christchurch
Dublin 8, D08 V529
Tel: 01-679 4611
info@dublinia.ie
www.dublinia.ie



Location
Dublinia is located at the crossroads of St Michael's Hill, Patrick St, and High Street in Dublin city centre. Dublinia is connected to Christ Church Cathedral by a medieval footbridge



SatNav: Latitude/Longitude
53.3432, -6.2719



Public Transport
Bus: 49, 54A, 123, 150
Luas (Red): Four Courts (7 mins walk to Dublinia)



Opening Times
Mar to Sept, 10:00–18:30h (last entry 17:30h), Oct to Feb, 10:00–17:30h (last entry 16:30h)



Admission Rates
Adult €12, Child €7
Senior/Student €11
Family (2+2) €30



Parking
Jury's Hotel car park on Werburgh St; show your Dublinia ticket when leaving to receive a discount on parking



Roe & Co Distillery

92 James's Street, Dublin 8

An immersive journey into whiskey

Centuries after the original Roe & Co Distillery closed its gates, one of Irish whiskey's most influential names is inspiring whiskey for a new generation.

Located in the buzzing Liberties district, Dublin 8, Roe & Co is a fully operational urban distillery and world-class whiskey experience. Minutes' walk from the Guinness Storehouse and Guinness Open Gate Brewery, step inside the former Guinness Power Station for an immersive journey into flavour. A distillery experience like no other!



Power House Tour: With a maximum of 16 guests, their signature tour is an intimate and personalised experience. Explore fun and flavourful cocktails, learn about the rise and fall of Irish whiskey and the stories that inspired this whiskey's modern reinvention.

Get the facts. Be **DRINKAWARE** <

Visit drinkaware.ie

Visiting



Contact
Roe & Co Distillery
92 James's Street
Dublin 8, D08 YW9
Tel: 01-643 5999
hello@roeandcowhiskey.com
www.roeandcowhiskey.com



Location
10 minute walk from Heuston Station



SatNav: Latitude/Longitude
53.3437, -6.2857



Public Transport
Bus: 123, 13 or 40 to James's Street Luas (Red): James's



Opening Times
11:00–19:00h, last admission 17:00h



Admission Rates
Adult €22. See website for best rates Strictly over 18's



Information
Find the perfect gift here—From distillery exclusives, personalised bottles and cocktail equipment



Parking
Paid parking nearby



Guinness Open Gate Brewery

James's Street, Dublin 8

Experimental brewery and taproom

The Guinness Open Gate Brewery is the home of brewing experimentation and innovation at St. James's Gate, where there has been an experimental brewery for over 100 years. Here Guinness brewers are given license to explore new recipes, reinterpret old ones and experiment freely to bring exciting beers to life.

For only €9 you can try a paddle of four beers, exclusive to the Guinness Open Gate Brewery. Chat to the Beer Specialists behind the bar who will guide you through their constant rotating roster of



beers, meaning you could be one of the first to ever taste the beer on tap! Try the specially curated food menu, designed to pair with these beers perfectly.

Get the facts. Be **DRINKAWARE** <

Visit drinkaware.ie

Visiting



Contact
Guinness Open Gate Brewery
James's Street
Dublin 8, D08 X20N
Tel: 01-471 2455
info@guinnessopengate.com
www.guinnessopengate.com



Location
Just a 10 min walk from Heuston Station



SatNav: Latitude/Longitude
53.3435, 6.2870



Public Transport
Bus: 123, 13 or 40 to James's Street Luas (Red): James's



Opening Times
See website for seasonal opening times



Admission Rates
Adult €9. See website for details Strictly over 18's



Information
See website for events throughout the year



Parking
Paid parking nearby



Irish Museum of Modern Art

Dublin 8

Providing an extraordinary space



Located in the historic Royal Hospital Kilmainham, IMMA is home to Ireland's National Collection of Modern and Contemporary art. In addition to presenting exhibitions by leading Irish and international artists, IMMA offers a free programme of talks, events and workshops, providing audiences

of all ages with the opportunity to engage with contemporary art. A visit to IMMA extends beyond the gallery space, with beautiful buildings, formal gardens, meadows, café and shop to explore. A highlight of 2020 is the major retrospective of

the work of Portuguese artist Paula Rego. The exhibition, *Obedience and Defiance* (12 Jun–01 Nov 2020), spans Rego's entire career, comprising of more than 80 works and includes paintings never displayed before.

Richmond Barracks

Inchicore, Dublin 8

Discover a history spanning over 200 years and the key role Richmond Barracks played in the history of our nation. Learn about the lives of the soldiers who were stationed here, the 1916 Rising rebels who were held here, as well as the people who lived and learned here when the army had gone. The guided tour traces the story of the men, women and children who all passed through this remarkable space. Guided tours last approximately 50 minutes.



War Memorial Gardens

Dedicated to the memory of Irish soldiers who died in the 1914–1918 war. The names of all the 49,400 soldiers are contained in the beautifully illustrated Harry Clarke manuscripts, located in the granite bookrooms in the gardens.



Visiting 1623



Contact

IMMA (Irish Museum of Modern Art)
Royal Hospital, Military Road
Kilmainham, Dublin 8, D08 FW31
Tel: 01-612 9900
info@imma.ie
www.imma.ie



Location

Main entrance on Military Road
Secondary entrance (Pedestrian only)
on South Circular Road



SatNav: Latitude/Longitude

53.3429, -6.3000



Public Transport

Bus: 13, 40, 79, 79a, 123, 145
Luas (Red): Heuston



Opening Times

Tues to Fri: 11:30–17:30h*
Sat: 10:00–17:30h*
Sun & B/Hols: 12:00–17:30h*
Mondays closed. *Last Admission to
any individual exhibition is 17:15h



Admission Rates

General Admission Free. Tickets for
Paula Rego Exhibition required—€8/€5



Information

IMMA Shop selling gifts, books, cards,
toys. Free WiFi. Kemps Sisters Café
offers lunch, snacks, drinks



Parking

On-site parking, €3 for the first 3 hours



Visiting



Contact

Richmond Barracks
Patriots Path (off Bulfín Road), Inchicore
Dublin 8, D08 YY05
Tel: 01-222 8400
richmondbrarracks@dublincitycouncil
culturecompany.ie
www.richmondbrarracks.ie



SatNav: Latitude/Longitude

53.3385, -6.3162



Opening Times

Open Monday to Saturday
Tour Times 11.00h, 13.00h, 14.00h



Admission Rates

Adult €8, Senior/Student €5
Family €18



Information

Enjoy the on-site Gardens and Officers
Mess Café





National Museum of Ireland— Decorative Arts & History

Dublin City



Home to a wide range of objects

The National Museum of Ireland—Decorative Arts & History is located at one of Dublin's most impressive, historic sites. This former military barracks is home to two fascinating and completely diverse collections. Decorative arts encompasses silver, ceramics, glassware, furniture, clothing, jewellery and coins while the military history collection tells of Ireland's military and revolutionary past.

Exhibition highlights include The Irish Wars 1919–1923, which forms part of the permanent exhibition 'Soldiers and Chiefs', but it has been substantially reimagined as part of the Museum's Decade of Centenaries Commemorations.

For more information and history about Irish soldiers, visit the exhibition *Soldiers & Chiefs—The Irish at War at Home and Abroad* from 1550 to the present day, and Eileen Gray, exploring the life and work of the iconic 20th century designer.

The museum offers a year-round programme of workshops, talks and tours for all ages and a changing programme of temporary exhibitions on historical and contemporary themes.

There is also a café and gift shop onsite.

Admission Free

Family fun filled days

The National Museum of Ireland offers families an ideal fun filled day out. There are a number of events for families, students and adults hosted at the three Museum sites in Dublin. Check the Calendar of Events available online for more information.

Discover the Museum shops located in Collins Barracks, Kildare Street and Merrion Street, offering a wide range of interesting and unique high quality gifts for the entire family. Then, just take a break in the excellent cafés for a tasty meal or snack with a lovely hot or cold drink!

Visiting



Contact

National Museum of Ireland
Collins Barracks, Benburb Street
Dublin 7, D07 XKV4
Tel: 01-677 7444
marketing@museum.ie
www.museum.ie



Location

On the North Liffey Quays, across the River Liffey from Heuston Station



SatNav: Latitude/Longitude
53.3489, -6.2859



Public Transport

Bus: see www.dublinbus.ie
Luas (Red): Museum



Opening Times

Tuesday to Saturday: 10:00–17:00h
Sunday & Monday: 13:00–17:00h
Closed Christmas Day and Good Friday



Admission Rates

Free admission



Information

Museum Shop selling gifts, books, jewellery and replica items
Museum Café offering snacks and hot and cold drinks



Parking

Parking Available, Pay & Display





Phoenix Park

Dublin City

One of the largest enclosed recreational spaces within a European Capital City

The Phoenix Parks' 16 km perimeter wall encloses 707 hectares of large grassland areas and tree-lined avenues and is also home to a herd of Wild Fallow Deer.

Áras an Uachtaráin, the residence of the President of Ireland dates from 1750 and is located in the centre of the Park adjacent to the United States Ambassador's residence, which was built in 1774.

Many other historic buildings and monuments are located in the Park. The Papal Cross was erected for the visit of Pope John Paul II on 29th September



1979. Over one million people attended an open air mass at the time.

The Victorian People's Flower Gardens located close to the Parkgate Street entrance, comprises of an area of 9 hectares and displays Victorian horticulture at its best.

Visiting



Contact

Phoenix Park
Parkgate Street, Dublin 7, D08 W4C6
www.phoenixpark.ie



Location

North of the city just a short walk from Heuston Station to the Parkgate Street entrance of the Park



SatNav: Latitude/Longitude
53.3484, -6.2969



Public Transport

LUAS (Red): Heuston or Museum



Parking

Car parks are provided for visitors



Farmleigh

Dublin City

The official Irish State guesthouse



Farmleigh is used to provide premier accommodation and facilities to visiting dignitaries and guests of the nation.

This historic house was built in the late eighteenth century and in 1873 purchased by Edward Cecil Guinness, first Earl of Iveagh and the great-grandson of Arthur Guinness, of the famous Guinness Brewery. Farmleigh House holds

important art collections along with the Benjamin Iveagh collection of rare books, bindings and manuscripts. Farmleigh Estate covers an area of 32 hectares and contains many beautiful features as well as an art gallery and a working farm. The extensive

pleasure grounds feature walled and sunken gardens, and scenic lakeside walks, making Farmleigh House and Estate one of Dublin's best kept secrets.

Please note that, because Farmleigh is a working Government building, the House may close at short notice.

Visiting



Contact

Farmleigh House
Phoenix Park, Dublin 15, D15 TD50
Tel: 01-815 5914
farmleighguides@opw.ie
www.farmleigh.ie



Location

Farmleigh is accessed via Phoenix Park



SatNav: Latitude/Longitude
53.3661, -6.3516



Public Transport

Bus: 37 from the city centre and get off at the Castleknock Gate



Opening Times

Farmleigh House
Open Mar 12 to Dec 31
Mon to Sun 10:00-17:30h
(last tour 16:30h)
Farmleigh Gallery
Tues to Sun & Bank Hols 10:00-17:00h
Closed 13:00-14:00h
Farmleigh Estate
Mon to Sun 10:00-18:00h
Gate closes at 17:00h



Admission Rates

House: Adult €8, Senior €6
Child (12-17yrs)/Student €4
Child (under 12) Free, Family €20
Gallery and Grounds: FREE



Parking

Free Parking on-site



Glasnevin Cemetery Museum and Guided Tours

Dublin City

1.5 million stories to tell

Visit Ireland's largest cemetery, a grand and impressive Necropolis where over 1.5m people are buried.

Located 2.5km from the city centre this Victorian garden cemetery covers 124 acres of parkland.

Engaging cemetery tours are delivered by knowledgeable guides who proudly tell the story of modern Ireland with a careful balance of passion, sensitivity, and fun!

General History Tour: visiting the graves of Ireland's heroes, this is a Who's Who of Irish History; **Dead Interesting Tour:** hear the quirky stories of Dublin's lesser known personalities; **O'Connell Tower:** 198 steps to breathtaking views



of Dublin, climb the 180ft (55m) tower, the largest in Ireland.

Choose from Dead Interesting (13:00 tour on Sat, Sun and B/Hol Mon), General History (daily tours at 11:30 and 14:30) and the O'Connell Tower (open daily). Times may be subject to change. Additional tours during the summer. See website.

Celebrating history, heritage and culture, join this intriguing journey through Ireland's past.

Visiting

Glasnevin Cemetery Museum
Finglas Road, Dublin 11, D11 H2TH
Tel: 01-882 6550
museum@glasnevintrust.ie
www.glasnevinmuseum.ie

Location

At the Four Courts take R108, Glasnevin is on the right. Or exit M50 at J5

SatNav: Latitude/Longitude
53.3698, -6.2771

Public Transport

Bus: 40 € 140 from O'Connell St

Opening Times

Open 7 days a week, incl. Bank hols
Summer: 10:00–18:00h
Winter: 10:00–17:00h

Admission Rates

Dead Interesting or General History Tours: Adult €14.50, Family (2+2) €40
Senior/Student/Child €12
O'Connell Tower: Adult €9.50, Senior/Student/Child €6.50, Family (2+2) €27
Combination Tickets: (tour and tower)
Adult €22, Senior/Student/Child €17
Family (2+2) €50

Information

Re-enactment 14:30h, check website for seasonal availability. Gift shop, Tower Café & access to Botanic Gardens

Parking

On street & private parking



Blessington Street Basin

Blessington Street, Dublin 7

Dublin's Secret Garden



Built in the 19th century, this garden was tasked with providing a clean water supply to the North side of Dublin city. Officially named the Royal George Reservoir, the basin could hold 4 million gallons of water. Until 1970 it supplied water to the Jameson Distillery, and to Power's until 1976.

Now the basin is a public park with a fountain and bird sanctuary on its central island. With the 'secret' gateway entrance on Blessington Street, this beautiful walled garden feels like a world of its own. Well worth a visit at any time of year.

Visiting

Contact

Blessington Street, Dublin 7
Tel: 01-222 5278

Location

In the heart of Dublin's north inner city within walking distance of O'Connell Street

SatNav: Latitude/Longitude
53.3573, -6.2719

Public Transport

Bus: 38, 38a, 38b, 38d, 120 or 122
Luas (Green): Broadstone DIT

Opening Times

Open year round

Admission Rates

Free admission





Butlers—The Factory Tour

Clonshaugh, Dublin 17

The ultimate chocolate discovery tour!



A visit to Butlers—The Factory Tour is a fun-filled activity, packed with chocolatey twists and turns to keep visitors on their toes! Filled with treats and eye opening views of the inner workings of the sustainable bustling chocolate factory, it's a colourful and entertaining visitor attraction with a difference!

With an accompanying tour guide, watch a short chocolate movie and soak in the aroma and atmosphere of the Butlers factory from the chocolate gallery mezzanine and finally, after

donning a white coat and hat, visit the interactive Chocolate Experience room to decorate your own chocolate novelty to bring home as a souvenir.

Butlers—The Factory Tour is suitable for chocolate lovers of all ages. Tick the sustainable Butlers Chocolate Factory off your to-do list this year.

Visiting



Contact
Butlers—The Factory Tour
Clonshaugh Business Park
Dublin 17, D17 A076
Tel: 01-671 0599
experience@butlers.ie
www.butlerschocolates.com/book



Location
Off Oscar Traynor Road, close to M1/M50 junction. See website for directions



SatNav: Latitude/Longitude
53.4037, -6.2195



Public Transport
Bus: 27 from City Centre. 15 mins walk when you exit the bus at stop #4383, Barrycourt Rd., See website for details



Opening Times
Tours run three times daily Monday to Saturday, and must be **booked in advance**. No factory production on Friday evenings, weekends or B/Hols



Admission Rates
Adult €15, Child €15, (Child U3 Free)
Family (2+2) €55
Save 5% when you book online
10% discount for senior citizens



Information
On-site Butlers Chocolate Café serving a range of hot beverages, gourmet sandwiches & treats, open Mon to Sat



Parking
Plenty of complimentary parking on-site



Howth

Howth, Co. Dublin

Seaside Fishing Village

Howth seaside village is just a short journey from Dublin city. Places of interest include the 15th century Howth Castle, Lambay Island, a Martello Tower, The Baily Lighthouse and Ireland's



Eye—an island bird sanctuary. Howth has various walking trails and loops and fabulous scenery. Try the Bog of Frogs Loop for scenic views of the cliffs, Lambay Island and the Baily Lighthouse. There are 4 signposted route options. Alternatively take a stroll down the pier, with its views of Ireland's Eye.

Howth Market just beside the DART station is home to an array of Irish crafts, handmade jewellery and vintage antiques. You will also find a wide selection of organic foods on offer, like olives, cheeses, nuts, chocolate and cupcakes. Some of the market units are open 7 days a week.

Visiting



Contact
Howth
Howth, Co. Dublin
www.visithowth.ie



Location
Howth Peninsula is 14km north east of Dublin City centre



SatNav: Latitude/Longitude
53.3887, -6.0729



Public Transport
Bus: 31a, 31b
DART: Howth Station





Dalkey

Dalkey, Co. Dublin

Picturesque Heritage Town

A popular tourist destination, a short distance from Dublin city centre, the medieval town of Dalkey has a rich and vibrant history.

Dalkey town offers guided historical walks to settings featured in the works of James Joyce, George Bernard Shaw and other Irish literary figures. Other activities include angling, golf and cycling. A great choice of galleries, shops, cafés, restaurants and bars make Dalkey the perfect day out.

At Hawk Cliff in Dalkey, breaking the natural landscape



of cliff and sea lies the word "EIRE." Above it is a huge number "7". The sign is 30m wide and 12m high. The huge letters are made of small irregular granite stones, held firm in mortar, and painted brilliant white. A reminder of Ireland's neutrality during the second World War.

Visiting

Contact

Dalkey
Dalkey, Co. Dublin
www.visitdublin.com

Location

Dalkey lies 12km south of Dublin City centre

SatNav: Latitude/Longitude

53.2781, -6.1049

Public Transport

Bus: 7d, 59, 111
DART: Dalkey



Killiney

Killiney, Co. Dublin

Popular Seaside Resort



A popular seaside resort which lies south of Dalkey and north of Shankill. The coastal areas of Killiney are often compared to the Bay of Naples in Italy hence the names of surrounding roads, like Vico, Sorrento, Monte Alverno, San Elmo and Capri. Killiney and nearby Dalkey are popular with walkers

and hikers offering easy walking routes and breathtaking scenery.

Killiney Hill Park was opened in 1887 as Victoria Hill, in honour of Queen Victoria's 50 years on the British throne. The park has

views of Dublin Bay, Killiney Bay, Bray Head, the Irish Sea and the Wicklow Mountains.

Killiney Beach is a long stony beach with stunning views of Dalkey Island and Sorrento Terrace. Great location for a picnic.

Visiting

Contact

Killiney
Killiney, Co. Dublin
www.visitdublin.com

Location

Killiney lies 15km south of Dublin City centre

SatNav: Latitude/Longitude

53.2654, -6.1149

Public Transport

Bus: 7, 45a, 59
DART: Killiney





Zipit Forest Adventures

Tibradden Wood, Dublin 16



Exhilarating Treetop High Ropes Adventure

Zipit is nestled on a sloping site in the South Dublin Mountains at Tibradden Woods only minutes from the M50 and Dundrum Town Centre. Enjoy panoramic views of Dublin Bay and Howth from this beautiful pine forest.

Zipit Forest Adventures is an exciting day out for all the family or anyone looking for an exhilarating and challenging outdoor activity in a natural setting. This acclaimed High Ropes Course has 110 activities and over 650 metres of ziplines for you to enjoy. Climb high into the treetops, swing into cargo nets, surf with a difference or try cycling a bike over a narrow treetop bridge before zipping down one of the many ziplines

Qualified instructors will give you a safety briefing to explain

the features of the course and equipment. You have a maximum of four hours, enough time to complete at least three circuits. The five circuits are suitable for different heights, ages and abilities and if you need any help or encouragement the instructors are never far away.

Other courses:

Lough Key Forest Park—Boyle, Roscommon
Farran Forest Park—Cork
Telephone 051-858 008



Good to Know

Zipit Tibradden covers 1.8km of treetop activities. There are over 110 activities between platforms in the trees. Over 650m of ziplines. The longest zipline is 135m. Five circuits ranging from 1–20 metres. Each circuit is customised and designed with graded difficulty levels. As you progress from tree to tree the challenge increases as you continue at your own pace. Zipit Forest Adventures is a member of the European Ropes Course Association.

Visiting



Contact

Zipit Forest Adventures
Tibradden Wood
Dublin 16, D16 XY79
Tel: 051-858 008
info@zipit.ie
www.zipit.ie



Location

Exit M50 at Junction 12, take R133 towards Ballyboden, at 3rd roundabout turn right onto R116 signposted Glencullen in 4.5km the R116 turns sharp left 200m after this the entrance is on the left



SatNav: Latitude/Longitude

53.2427 -6.2948



Opening Times

Open Feb to Nov
(availability shown online)
Group bookings call 051-858 008
Open 7 days May to Aug
Open School Mid-term breaks,
Easter and B/Hols
See website for full opening hours



Admission Rates

Discounted Online Prices
7–8yrs €15, 9–11yrs €25
12–14 yrs €30, 15+ yrs €35
Group discounts available
Min. Height Restriction of 1 metre
Min. age 7yrs



Information

Picnic areas. Walking Trails—Moderate

Parking

Free coach and car parking



Imaginosity, Dublin Children's Museum

Sandyford, Dublin 18

Imaginosity, Dublin Children's Museum is Ireland's ONLY dedicated interactive children's museum, a child-centred, creative, educational space for children under the age of 9 and their families.

Imaginosity's child-sized world is filled with a myriad of interactive real life experiences to engage in; from working in the Supermarket to driving the car, performing in the theatre and working in the Construction Zone... there is something for everyone!

Imaginosity also offer seasonal activities, creative camps (during school holidays), parent & toddler activities and events throughout national educational weeks. See www.imaginosity.ie



Visiting

Contact

Imaginosity, Dublin Children's Museum
The Plaza, Beacon South Quarter,
Sandyford, Dublin 18
Tel: 01-217 6130
info@imaginosity.ie
www.imaginosity.ie

SatNav: Latitude/Longitude

53.2780, -6.2158

Opening Times

Mon: 13:30–17:30h (Jul & Aug 09:30–17:30h), Tues to Fri & B/Hols: 09:30–17:30h, Sat & Sun: 10:00–18:00h
2 hour timed sessions, advance online booking strongly advised

Admission Rates

Adult €8, Child (3+ yrs) €8, Concession (Seniors/Students—bring valid ID card) €7, Toddler (1–2 yrs) €6, Babies (6–12 months) €2

Parking

Available at the Beacon South Quarter

Wicklow's Historic Gaol

Wicklow Town, Co. Wicklow

Interactive journey through two centuries of prison life



Wicklow Gaol tells the story of its prisoners through an interactive tour partially led by experienced and passionate actor guides. With holographic projections of cruel prison guards, the sound of the defiant cries from the 1798 rebels and the transformation of three prison floors to visually recreate over 200 years of Irish history through the eyes of the inmates - this is an attraction not to be missed.

Learn why Wicklow Gaol is world-renowned as Ireland's most haunted building with bespoke experiences. This

spectacular Gaol is open to visitors seven days a week.

NEW—Ireland's Premier Virtual Reality Experience

GATES OF HELL Virtual Reality Tour

This fully immersive experience will transport visitors back in time to Wicklow Gaol in the 1700s—a grim 3-dimensional world of corruption, rebellion & dark dungeons.

Some of the Gaol's most notorious prisoners will feature and there may even be a guest appearance from one of the Haunted Gaol's famous ghosts!

Visiting

Contact

Wicklow's Historic Gaol
Kilmantin Hill, Wicklow Town
Co. Wicklow, A67 FA49
Tel: 0404-61599
info@wicklowshistoricgaol.com
www.wicklowshistoricgaol.com

Location

From Dublin: Off main Dublin/Wexford road (N11) at Rathnew, two miles from Wicklow town
From Wexford/Waterford: Turn right off N11 at the Beehive (two miles from Wicklow Town)
The Gaol is situated at the southern end of Wicklow town beside the courthouse

SatNav: Latitude/Longitude

52.9790, -6.0372

Opening Times

Daily 10:30-16:30h

Admission Rates

Virtual Reality Experience Ticket Prices

Adult €15, Senior/Student €12

Child (U12) €10, Family €50

Day Tour Ticket Prices

Adult €9.50, Senior/Student €8

Child (U12) €6.50, Family €26

Information

Gaol Café Restaurant, Craft Shop, Picnic Area, Meeting Room

Parking

Free parking for visitors to the Gaol





Powerscourt Distillery

Powerscourt Estate, Enniskerry, Co. Wicklow

The Home of Fercullen Irish Whiskey

Powerscourt Distillery welcomes you to experience a unique Whiskey distillery in an extraordinary location. Enjoy a 60-minute fully immersive, guided tour of the whiskey distilling process. Starting in the converted old Mill house dating back to 1730, the visitor emerges from the ancient entrance building into a light, bright contemporary Distillery and a modern visitor centre. Experience first-hand the sights, sounds and aromas of a fully operational distillery. Included is a visit to the on-site maturation warehouse, which is used for filling and storing whiskey casks. This tour includes three samples of the award-winning Fercullen Irish whiskeys by the on-site world-



renowned Master Distiller and Blender, Noel Sweeney. Having only opened to the public in May 2019 Powerscourt Distillery and Visitor Centre has already been awarded 4th place in the recent Gold Star Awards for the Best Irish Drinks Tourism Destination.

Use promo code DAG20 for 10% reduction when booking online or present this guide at the distillery.

Visiting



Contact

Powerscourt Distillery
Powerscourt Estate, Enniskerry
Co. Wicklow, A98 A9T7
Tel: 01-506 5656
info@powerscourtdistillery.com
www.powerscourtdistillery.com



Location

20km from Dublin City on the Powerscourt Estate



SatNav: Latitude/Longitude

53.1840, -6.1908



Public Transport

Bus: 44 & 185 from Dublin to Enniskerry village. 20 min walk to the estate



Opening Times

Check website for opening times and to book a tour



Admission Rates

Variety of tours, please see website for options and prices. Present this guide or book online using promo code DAG20 to receive a 10% discount



Information

Guided Tours
Gift shop selling bespoke Powerscourt Distillery souvenirs
On-site Café/Bar



Parking

Free car and coach parking



Day Tours of Wicklow

departing from Dublin City

Dublin City

**DAY TRIP
from DUBLIN**



Day tour of Wicklow, Glendalough and Powerscourt



Enjoy a fun-filled day tour in County Wicklow with a real difference. You will have the option to leave the tour bus and get out into the Irish countryside to enjoy a guided walk or horse riding. If activities aren't for you, why not visit The Powerscourt Gardens? (Reduced rate of €8 not covered in the tour cost.)

This Tour has been awarded "A Certificate of Excellence from Trip Advisor".

The tour includes Enniskerry (Film location of "P.S. I Love You"), Lough Tay, The Guinness Estate (Film Location of "Brave Heart"), Sally Gap

and Glendalough (Valley of the two lakes) with stops to take some photos.

The activities, suitable for beginners and experienced, are guided and include equipment. The guides are very friendly and full of local history of the areas visited.

Visiting



Contact

Day Tours of Wicklow
17 Dodder Lawn, Dodder Valley Park
Firhouse, Dublin 24, D24 WV1X
Tel: 087-784 9599
info@hilltoppreks.ie
www.hilltoppreks.ie



Location

Dublin Pickup Point:
Molly Malone Statue, Suffolk Street
Eircode D02 EH32: 09:20h
Return to Dublin approx 17:30h



SatNav: Latitude/Longitude

Molly Malone Statue: 53.3437, -6.2609



Public Transport

Bus: Buses to City Centre
Luas (Green): O'Connell Upper, Dawson
Luas (Red): Abbey Street
DART: Dublin Pearse



Tours Operate

All year



Admission Rates

Tour Only: Adult €35
Senior/Student/Child €32
Guided Walk: €42
Horse Riding: €85



Parking

City Centre on-street pay & display and multi-storey parking



The Round Tower Clondalkin

Clondalkin, Dublin 22

1 Tower, 1,000 years of History



The Round Tower visitor centre, Clondalkin contains an exhibition that explores Clondalkin's medieval origins from the foundation of Saint Crónan Mo-Chua's monastery, to revealing intriguing clues to Ireland's Viking past. This interactive exhibition is suitable for all ages and tells the story

of over 1000 years of history and heritage.

A trip to the Round Tower isn't complete without a trip to the Happy Pear Café, where tasty healthy food meets friendly service. Dine indoors or outdoors where you can

enjoy the scenic café gardens.

There is lots to see and do. Meet exciting characters, build your own round tower, or dress up in costume and imagine what Ireland was like in days gone by.

Visiting



Contact

The Round Tower Clondalkin
Brú Chrónáin, Tower Road, Clondalkin
Dublin 22, D22 DV56
Tel: 01-555 4648
info@theroundtower.ie
www.theroundtower.ie

Clondalkin

Location

On the edge of Dublin City mere moments from the mountains you will find Clondalkin—a heritage rich village

SatNav: Latitude/Longitude
53.3227, -6.3955

Public Transport

Bus: 13, 69, 76, 76a to Clondalkin village or the 151 to the 9th Lock Road which is a 10min walk from the centre Luas (Red): Stops at the Red Cow and is a 25min walk from the centre

Opening Times

Mon to Fri 09:00–16:00h
Sat & Sun 09:00–17:00h

Admission Rates

Free Admission

Information

The centre is fully accessible with lift, toilet facilities and on-site parking

Parking

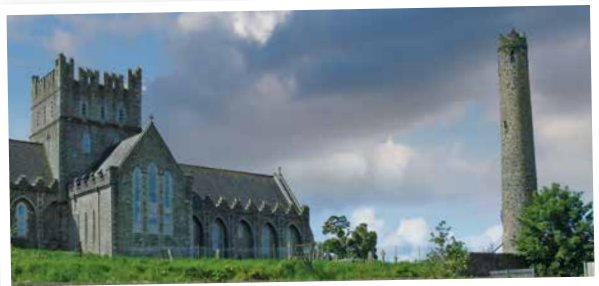
Pay parking available nearby



Kildare Town

Kildare Town, Co. Kildare

One of Ireland's oldest towns



Explore the fascinating history of the medieval town of Kildare at Kildare Town Heritage Centre which is located in the restored 18th century Market House opposite St Brigid's Cathedral. Offering a multimedia exhibition telling the story of Kildare, past and present.

See St. Brigid's Monastic Site, the site of a Norman Castle,

Ireland's first Turf Club, learn about three medieval Abbeys, and much much more.

Located close by is The Irish National Stud and Gardens, The Curragh Racecourse, Kildare Village and Newbridge Silverware Visitor Centre.

Visiting



Contact

Kildare Heritage Centre & Tourist Information Centre
Kildare Town, Co. Kildare
Tel: 045-530 672
www.kildareheritage.com

Kildare

Location

Travelling by car: Take Exit 13 off the M7

SatNav: Latitude/Longitude
53.1570, -6.9104

Public Transport

Bus: Bus Eireann and Dublin Coach offer services to Market Square in Kildare
Train: Heuston (Dublin) to Kildare

Opening Times

Kildare Town Heritage Centre is open Mon to Sat 09:30–17:00h
Closed for lunch 13:00–14:00h

Admission Rates

Kildare Town Heritage Centre & Tourist Office: FREE Admission
Guided Tours: Rates apply





Newbridge Silverware

Newbridge, Co Kildare



Museum of Style Icons

Enjoy FREE entry to the Museum of Style Icons, which houses one of the greatest private collections of original style, fashion and popular culture artefacts in the world.

Enjoy a self guided tour of this rare collection displayed in one of the world's most memorable museums.



Immerse yourself in the finest couture and original items which once belonged to Audrey Hepburn, Princess Diana, Marilyn Monroe, Princess Grace, Elvis, The Beatles and many more screen and music legends.

It all started with fashion's most enduring look; the little black dress worn by Audrey Hepburn in the movie Charade (1963) which was acquired by Newbridge Silverware in 2006. The collection has grown to include garments, letters, design drawings and original prints that once belonged to the most iconic women and men in the world.





Visitor Centre



Factory Tour

originally Newbridge Cutlery, was established in 1934 and is one of Ireland's oldest surviving companies. Some of the team have been with them for three generations. This is an opportunity to experience the precision craft of manufacturing tableware and jewellery, which is virtually unchanged over the past 85 years.



Take a guided tour of the working silverware factory and learn about the time-honoured processes and true-life stories that lie at the heart of one of Ireland's most treasured brands. Visitors on the 45 minute guided tour will move through the working factory floor and meet some of the crafts people behind the coveted collections. Newbridge Silverware,



After your tour

After enjoying the tour and the museum make sure to browse through the complete range of Irish designed products in the stylish Lifestyle Store. Tax free shopping in the store for eligible visitors from outside of the EU. Or enjoy refreshments in the relaxed and friendly ambience of the Café Carleton featuring freshly prepared local food. Live piano music is played in the Café on Monday to Friday mornings. Treat yourself to breakfast, lunch, a light meal or for a special treat—sumptuous afternoon tea. Vegetarian, vegan and gluten free options are available.



Visiting



Contact

Newbridge Silverware Visitor Centre
Newbridge, Co Kildare, W12 HT 6Z
Tel: 045-431 301
Reception@newbridgesilverware.ie
www.visitnewbridgesilverware.com



Location

Less than 40 minutes from Dublin
—Junction 10/12 off the M7



SatNav: Latitude/Longitude

53.1762, -6.7969



Public Transport

Train from Heuston Station to
Newbridge Train Station www.irishrail.ie
Multiple bus services www.buseireann.ie
& dublincoach.ie



Opening Times

Mon to Sat 09:00–18:00h
Sundays & Public Holidays
10:00–18:00h
Last admission, 1hr before closing
Closed Dec 24, 25, 26 & Jan 01



Admission Rates

Museum of Style Icons:
FREE entry
Factory Tour:
Adult €12, Senior/Student €10
Child (U12) Free (with paying adult subject to availability)



Information

Book online for the Factory Tour to be sure of availability. Groups welcome



Parking

Free on-site coach and car parking





Discover Boyne Valley

County Meath and County Louth

Birthplace of Ireland's Ancient East

Journey through time in the Boyne Valley. 5,000 years ago the first farmers in Ireland built the famous tombs at Newgrange and Knowth (accessible via the newly refurbished Brú na Bóinne visitor centre). Early Christian high crosses and round towers may be seen at Kells and Monasterboice while the largest Anglo-Norman castle in Ireland is situated in Trim. Oldbridge House offers a visitor centre for the monumental Battle of the Boyne which took place in 1690. Heritage and cuisine combine in Navan and Slane with gourmet restaurants



and artisan food producers; while nearby Drogheda boasts a buzzing arts scene as well as museums and galleries. The Boyne Valley is also the home of the ancient Samhain tradition, now showcased with the annual Spirits of Meath and Púca Halloween festivals.

Visiting



Contact

Boyne Valley Tourism
Buvinda House
Dublin Road, Navan
Co. Meath, C15 Y291
info@discoverboynevalley.ie
www.discoverboynevalley.ie



Location

Situated in the East of Ireland only 30 minutes from Dublin



SatNav: Latitude/Longitude
53.6427, -6.6666



Information

So much to see and do, from historic sites to family adventures. Excellent accommodation and food options. Download the Discover Boyne Valley App or call into one of the tourist information offices. See discoverboynevalley.ie for details



Trim Heritage Town

Trim, Co. Meath

Site of the largest Anglo-Norman castle in Ireland

Situated on the River Boyne, Trim is dominated by the Medieval Trim Castle which is the largest Anglo-Norman Castle in Ireland, built by Hugh de Lacy in 1173. The town is full of medieval sites to explore, including the Yellow Steeple formerly a seven-story church, Sheep's Gate which is the only surviving medieval gateway to the town, and the ruins of Newtown Cathedral and Abbey. During the early 1700s Jonathan Swift, author of Gulliver's Travels, lived at



Lacacor, near Trim, where he served as vicar to a small congregation.

Drop into the Trim Visitor Centre to learn about the rich history of the town.

Visiting



Contact

Trim Visitor Centre
Castle Street, Trim
Co. Meath, C15 TXA5
Tel: 046-943 7227
trimvisitorcenter@eircom.net
www.discoverboynevalley.ie



Location

From M1 motorway at J10, take the N51 exit



SatNav: Latitude/Longitude
53.5545, -6.7894



Information

Medieval Armoury Tour, Tourist Information Point and Gift Shop

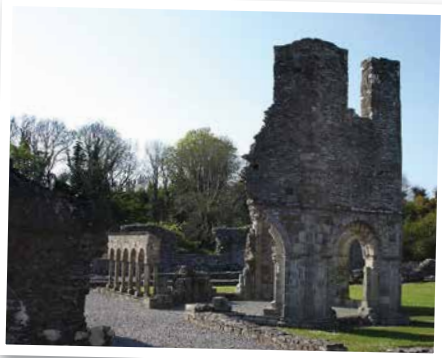




Old Mellifont Abbey

Drogheda, Co. Louth

The first Cistercian Monastery in Ireland



Mellifont Abbey, located close to the town of Drogheda in Co. Louth is the first Cistercian monastery in Ireland founded in 1142 by St Malachy of Armagh. The abbey sits on the banks of the River Mattock, approx 10 km north-west of Drogheda.

Little of the original Abbey now remains, although visitors can see one of its most unusual features; an octagonal lavabo c. 1200. This lavabo was used by the monks to wash their hands before eating.

The Visitor Centre houses an interesting exhibition on the work of masons in the Middle Ages with fine examples of their craft on display. Access to site by stone stairway.

Visiting



Contact
Old Mellifont Abbey
Tullyallen, Drogheda
Co. Louth, A92 K682
Tel: 041-982 6459
mellifontabbey@opw.ie
www.heritageireland.ie



Location
10km north-west of Drogheda off the R168 (Drogheda-Collon Road)



SatNav: Latitude/Longitude
53.7428, -6.4586



Opening Times
May 28 to Aug 26
Daily 10:00-18:00h
Last admission 45 mins before closing



Admission Rates
Adult €5, Senior/Group €4
Child/Student €3
Family €13



Information
Guided tours available on request
Picnic area. Leaflet/Guide books available in English, Irish, French, German, Italian, Spanish
To contact outside of opening hrs please call 041-988 0300



Parking
Public car & coach parking



OPW

BUY AN OPW HERITAGE CARD
& EXPLORE IRELAND'S
WONDERFUL HERITAGE



Jerpoint Abbey



Castletown House



Donegal Castle

Free admission to more than 45 of Ireland's finest heritage sites



Dún Aonghasa

Unlimited access for up to one year

€40

Adult

€30

Senior

€10

Child/Student

€90

Family

Heritage Cards can be purchased at participating heritage sites

by phone: 01-647 6592 / Lo Call 1850-600 601

Find us on Facebook



Full details: www.heritageireland.ie



Carlingford Lough Ferry

Greenore, Co Louth



An unforgettable voyage of discovery

Whether you're taking a day trip or enjoying a holiday break, the new Carlingford Lough Ferry is an unforgettable experience and a great adventure for the family. Located midway between Dublin and Belfast, Carlingford Lough Ferry connects the dramatic Cooley Peninsula at the beginning of Ireland's Ancient East in the Republic of Ireland with the majestic Mountains of Mourne, the gateway to Northern Ireland. Surrounded by epic scenery and shrouded in mystery, with a rich tapestry of legend and folklore hidden in its hills. This largely undiscovered region is an area of outstanding natural beauty.

Take the Carlingford Lough Ferry and visit Newcastle with its wonderful range of craft and curiosity shops, exquisite boutiques and delicious cuisine, or for the more active, enjoy camping, cycling and mountain bike trails. Follow St. Patrick's trail through Downpatrick or stay hot on the trail of Game of Thrones filming locations such as the haunted Forest

in Tollymore and Winterfell in Castle Ward, onward to "The Kingsroad" and the world-famous dark hedges! The Carlingford Lough Ferry connects a range of fantastic holiday activities on both sides of the Lough.

Relax on Port Beach located a few short miles north of the fishing village of Clogherhead in Co. Louth or embrace the high-octane energy at the Funtasia Water Park in Drogheda and Tayto Theme Park in Co. Meath.

Carlingford Lough ferry is your route to enjoy the best experiences during your vacation in Ireland.

To plan your trip visit www.carlingfordferry.com and enjoy a 10% online booking discount.



Visiting



Contact

Carlingford Lough Ferry
Greenore Port, Greenore,
Co Louth, A91 A0V1
info@carlingfordferry.com
www.carlingfordferry.com



Location

From Dublin/Dundalk northward M1, Junction 18. Follow signs eastward to Greenore Port for approx. 20km 100km from Dublin Airport



SatNav: Latitude/Longitude
54.0330, -6.1337



Sailing Times

Every hour on the hour from Greencastle. Every hour on the half hour from Greenore
Sailing times are subject to change
See website for timetable & live sailing status



Fares

Car Single: €15/€13.50
Car Return: €25/€22.50
For other ticket types please check www.carlingfordferry.com and avail of a 10% discount



Information

Toilets available in both terminal car parks



Parking

Waiting Area for Ferry Traffic



**CARLINGFORD
LOUGH FERRY**





The Old Rail Trail Greenway

Mullingar to Athlone, Co Westmeath



Enjoy the fresh air & explore the trail



Pedal your way through the very heart of Ireland on this delightful greenway. Alive with wildlife, your peaceful journey will be soundtracked by little other than birdsong and the whirr of the spokes on your bike. 42kms in total, it traces the historic Midlands Great Western Railway track, past restored station houses and under pretty stone arched bridges. From Athlone to Mullingar, it passes through areas of unique biodiversity and heritage. www.visitwestmeath.ie

Things to See and Do on the Old Rail Trail Greenway:

Athlone Castle Visitor Centre

Before you hop on a bike, take a stroll along the Shannon Banks to Athlone Castle. Climb the steps to the castle keep and enjoy panoramic views across the River Shannon. Take a step back in history and discover the ancient stories through swords, cannon balls, stunning sculptures and interactive displays at the Visitor Centre. www.athlonecastle.ie

Dún na Sí Amenity and Heritage Park, Moate

This must-see attraction is directly accessible from the greenway at Moate. Features include a fantastic playground, outdoor art displays, guided heritage tours and genealogy as well as a great locally run café with outdoor seating overlooking the park and play areas. Enjoy the walking and cycling trails through a wetland nature reserve and planted parkland or unwind with traditional Irish music and dance. www.dunnasi.ie

Royal Canal Greenway, Mullingar

The Old Rail Trail meets the Royal Canal Greenway at Ballinea and Newbrook. From here it's just a short spin into Mullingar for a rest, refreshments, culture and craic. The Blueway Activity Zone at Mullingar Harbour offers multi-activity exploration of the Royal Canal, including kayaking, canoeing and stand-up paddleboarding. www.visitwestmeath.ie/get-outdoors

Fleadh Cheoil na hÉireann 2nd-9th August, 2020

Mullingar is the birthplace of Fleadh Cheoil na hÉireann, Ireland's Traditional Music Festival and will again host this memorable event. The musical heritage of Mullingar spans genres and generations, with famous musical talent ranging from Joe Dolan to Niall Horan.

Visiting



Contact

Mullingar Discover Ireland Centre
Market Square, Commons
Mullingar, Co. Westmeath, N91 PW95
Tel: 044-934 8650
www.mullingar.ie

Athlone Tourist Information Office

6 Castle Street, Athlone
Co. Westmeath, N37 X439
Tel: 090-649 4630
www.athlone.ie



Location

Athlone: 1hr 30mins from Dublin on the M4 and M6
Mullingar: 1hr from Dublin on the M4



SatNav: Latitude/Longitude

Athlone: 53.4281, -7.9316
Mullingar: 53.5168, -7.3631



Information

Great options for rest, refreshments and lots to see and do can be found in Athlone, Moate and Mullingar. Bike hire and tours are also available. Find out more on www.VisitWestmeath.ie



Parking

Car parks available in Athlone and Mullingar, along with several other access points along the way



Fleadh Cheoil
na hÉireann
2020
Mullingar
'The Homecoming'



Belvedere House, Gardens and Park

Mullingar, Co. Westmeath



A fascinating Georgian Estate to visit

The magnificent 160 acre Lakeside Estate of Belvedere House Gardens & Park, within Ireland's Ancient East, boasts a fully restored Georgian Villa built in 1740 for Robert Rochfort, later Lord Belvedere.

The Estate has a fascinating Victorian Walled Garden, with one of Ireland's finest collections of rare and special plants. The naturalistic designed 18th century parkland, punctuated with Romantic Follies, includes the largest in Ireland "The Jealous Wall".

There is a licensed Restaurant and Gift Shop on site and there



are also outdoor children's playgrounds, a magical fairy garden & many picnic areas.

Whether you are part of a gardening group, historical society, school tour, active retirement association, family gathering or group of friends, a visit to Belvedere is a superb day out with a difference.

Visiting



Contact

Belvedere House, Gardens and Park
Mullingar, Co. Westmeath, N91 EF80
Tel: 044-933 8960
info@belvedere-house.ie
www.belvedere-house.ie



Location

5 km south of Mullingar on N52
1 hour from Dublin, M4/N4, Exit 15



SatNav: Latitude/Longitude

53.4772, -7.3693



Opening Times

7 days a week all year round from 09:30h
Seasonal closing times apply



Admission Rates

Adult €8. Student/Senior €6
Child €4
Family Ticket €23 (2A + 2C)
Each additional child €3



Information

Catoca fine food and giftware. Great food, great service, great location
Catering for all your special occasions and corporate events
www.catocafinefood.com



Parking

Free car parking available on site



Tullynally Castle and Gardens

Castlepollard, Co. Westmeath

Set among the beautiful limestone hills of Westmeath



Only minutes from the pretty town of Castlepollard, follow an oak avenue to one of Ireland's largest castles, owned by the Pakenhams (later Earls of Longford) for over 350 years. Starting from the castle terraces, you can explore the walled gardens, bright with

herbaceous borders, then the extensive woodland gardens, set around two ornamental lakes. Owner Thomas Pakenham has added many exciting new trees, collected as seed on his travels in China and Tibet. For children, there is a play area and special discovery trail.

On Sundays take a guided tour of the castle's Victorian servants' quarters and discover the secrets of 19th century 'Life Below Stairs'.

See website for other tour times and events.
www.tullynallycastle.ie

Visiting



Contact

Tullynally Castle and Gardens
Castlepollard
Co. Westmeath, N91 NX57
Tel: 044-966 1856
info@tullynallycastle.ie
www.tullynallycastle.ie



Location

N4 to Mullingar, R395 to Castlepollard
In Castlepollard Square take the first left onto the R394 for 1.5km to the Castle entrance



SatNav: Latitude/Longitude

53.6839, -7.3279



Opening Times

Apr 02 to Sept 27, Thurs to Sun and Bank/Hols 11:00-17:00h
Jun & Jul: Open Wed to Sun
October: Open Sundays



Admission Rates

Adult €7.50
Child (5-16 years) €3.50
Senior/Student €7.00
Family (2+2) €19.00



Information

Tullynally Tearooms offer delicious, home baked cakes, light lunch menu, tea and coffee



Parking

Car park near Tearooms





House of Waterford Crystal

The Mall, Waterford City

DAY TRIP
from **DUBLIN**



A Breathtaking Experience

Waterford Crystal is located in the heart of Waterford City. The highlight of any visit, the guided Factory Tour gives visitors an up close and personal insight into the centuries-old tradition of Waterford Crystal making.

Feel the heat of the furnace and marvel at the skills of the Craftsmen during your guided tour, which takes approximately 50 minutes.

After the tour, indulge your passion for the world's most famous Crystal in the lavish Retail Store housing the largest collection of Waterford Crystal found worldwide. The exhibition of Sporting Trophies and Statement Pieces is also a must-see attraction.

During your visit, take time

Railtours Ireland

Enjoy a day out by Rail to the South East of Ireland. Explore the historic Viking City of Waterford where you can visit The Waterford Crystal Visitors Centre.

www.railtoursireland.com Tel 01-856 0045

to relax and enjoy breakfast, lunch or afternoon tea in the Crystal Café.

Waterford City

Visit Reginald's Tower a Viking fortress, home to an exciting exhibition of Waterford's Viking heritage; Bishops Palace an authentic eighteenth century Georgian grand residence; The Medieval Museum which hosts a 15th Century Wine Vault located under the city of Waterford.



Visiting



Contact

House of Waterford Crystal
The Mall, Waterford City, X91 FXN4
Tel: 051-317 000
houseofwaterfordcrystal@fiskars.com
www.waterfordvisitorcentre.com



SatNav: Latitude/Longitude
52.2593, -7.1073



Day Trip from Dublin

Train: Tour DH01, also visits Kilkenny City, departs Heuston Station 07:25h, arrives back at 20:00h



Opening Times

March: Tour Mon to Sat 09:00–15:15h, Sun 09:30–15:15h
Store Mon to Sat 09:00–17:00h
Sun 09:30–17:00h

April to October: Tour Mon to Sat 09:00–16:15h, Sun 09:30–16:15h
Store Mon to Sat 09:00–18:00h
Sun 09:30–18:00h

November to February: Tour Mon to Fri 09:30–15:15h. Store Mon to Sat 09:30–17:00h, Sun 12:00–17:00h (Nov/Dec only)



Admission Rates

Adult €15, Senior €13, Student €12
Child (10–18 yrs) €7, Child (U10) Free
Family €40



Information

Coffee Shop, Factory Tour and Crystal Retail Store



Parking

Parking adjacent





A-Z Index

Ref	Attraction	See page...	Ref	Attraction	See page...
61	Belvedere House, Gardens and Park	44	47	Killiney	33
43	Blessington Street Basin	31	22	Mansion House	20
44	Butlers—The Factory Tour	32	13	Merrion Square	15
59	Carlingford Lough Ferry	42	25	Molly Malone Statue	21
31	Chester Beatty	25	4	Mountjoy Square	9
6	The Custom House	10	12	National Gallery of Ireland	15
46	Dalkey	33	18	National Library of Ireland	18
5	Daniel O'Connell Monument	10	17	National Museum, Archaeology	17
52	Day Tours of Wicklow	36	39	National Museum, Decorative Arts	29
63	Day Trip to House of Waterford Crystal	45	16	National Museum, Natural History	17
56	Discover Boyne Valley	40	55	Newbridge Silverware Visitor Centre	38/39
1	DoDublin Bus Tours	8	58	Old Mellifont Abbey	41
10	Dublin Bay Cruises	13	60	The Old Rail Trail Greenway	43
30	Dublin Castle	24	14	Oscar Wilde Statue	16
29	Dublin City Hall	24	40	Phoenix Park	30
8	Dublin Docklands	12	51	Powerscourt Distillery	36
34	Dublinia	26	19	RHA Gallery	18
7	Epic The Irish Emigration Museum	11	38	Richmond Barracks	28
9	Famine Memorial	12	35	Roe & Co Distillery	27
41	Farmleigh	30	53	The Round Tower Clondalkin	37
27	The Four Courts	23	32	Saint Patrick's Cathedral	25
3	Garden of Remembrance	9	11	Science Gallery	14
42	Glasnevin Cemetery Museum & Guided Tours	31	20	St. Stephen's Green	19
15	Government Buildings	16	33	Teeling Whiskey Distillery	26
23	Grafton Street	20	26	Temple Bar	22
36	Guinness Open Gate Brewery	27	57	Trim Heritage Town	40
28	Ha'penny Bridge	23	62	Tullynally Castle and Gardens	44
45	Howth	32	50	Wicklow's Historic Gaol	35
2	Hugh Lane Gallery	8	48	Zipit Forest Adventures	34
49	Imaginosity, Dublin Children's Museum	35	Dublin City Centre Map of Attractions 6/7		
37	Irish Museum of Modern Art	28			
24	Irish Whiskey Museum	21			
21	The Iveagh Gardens	19			
54	Kildare Town	37			



Your Dublin Adventure

- Blue Flag Beaches
- Car Ferry Crossing





MAKERS OF THE

Authentic Claddagh Ring™

TAX FREE SHOPPING FOR NON EU RESIDENTS

SHOP ONLINE



CLICK & COLLECT

VISIT OUR STORES

25 MAINGUARD ST. GALWAY ☎ 091 562 310 2 GRAFTON ST. DUBLIN 2 ☎ 01 607 4018

📌 FB.COM/CLADDAGHJEWELLERS 📧 SHOP@THECLADDAGH.COM

WWW.THECLADDAGH.COM



LEGEND OF THE CLADDAGH RING™

VISITOR CENTRE GALWAY



GALWAY'S NEW AND EXCITING CLADDAGH RING VISITOR CENTRE AND WORKSHOP

Learn about the origins of Galway's iconic Claddagh ring which dates back over 300 years. Come and see where the Authentic Claddagh Ring™ is made.

26 SHOP STREET, GALWAY.

🌐 WWW.CLADDAGHLEGEND.COM 📌 FB.COM/CLADDAGHLEGEND