

The BEST Visitor Attractions

GLANCE

# Your Daily Adventure

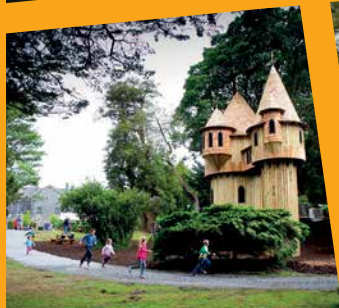
2020/21

FREE  
Visitor  
Guide



Ireland's  
Shannon  
Region

WIN  
a Great  
Lighthouses  
of Ireland  
holiday



DISCOVERIRELAND.IE

YourDailyAdventure.com

# WIN

# an Amazing Holiday Break at a



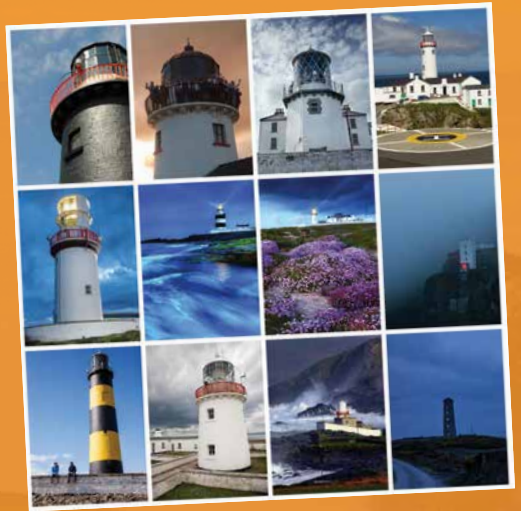
Take our  
**2-minute** online  
feedback survey,  
and you could win  
this fantastic prize.

This Daily Adventure guide provides you with lots of great ideas on things to do, see and enjoy during your Ireland holiday. We encourage and welcome reader feedback and, therefore, if you take our 2-minute **online survey** you will have a chance of winning a wonderful Lighthouse Holiday Break for up to 5 people sharing at a choice of locations around Ireland.

## Take the Survey and Win

Our feedback survey will take you no more than 2 minutes to complete, and you can do so online via [www.YourDailyAdventure.com/enter](http://www.YourDailyAdventure.com/enter), OR you can scan the QR code above.

You must complete the online survey no later than **Friday, October 9, 2020**.



## The Prize

### A Stay at an Amazing Irish Lighthouse

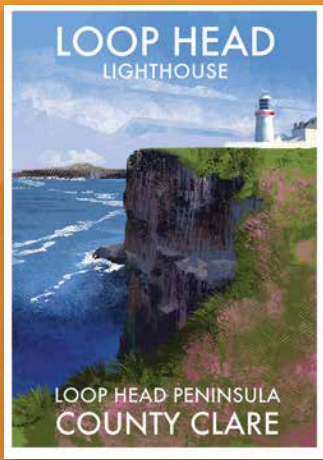
Great Lighthouses of Ireland features 14 amazing lighthouses perched high in dramatic locations around Ireland's stunning coastline. They are wonderful to visit, and visitors can also stay at eight of these lighthouses.

See [www.GreatLighthouses.com](http://www.GreatLighthouses.com).

The lucky winner, selected from those completing our survey, will get to enjoy an exhilarating 3-night stay, for up to 5 people sharing, at their choice of lighthouse locations. The prize break must be availed of within 12 months of winning.



# Great Lighthouse of Ireland



## 10 posters to be won

Every entry will be entered in a draw to win one of 10 fabulous posters by award-winning author and illustrator, Roger O'Reilly. The collection of almost 90 lighthouses of Ireland is available on [www.IrelandPosters.ie](http://www.IrelandPosters.ie) As shown here the posters capture the uniqueness of each lighthouse setting. They are great for framing and bring wild and natural Ireland into any room where they hang.

**Winners of the posters will also be selected on Friday, October 16, and they can select which lighthouse poster they wish to receive as their prize from IrelandPosters.ie.**

## Terms and Conditions

- You must be aged 18 or over to participate.
- The survey must be completed online no later than Friday, October 9, 2020.
- The survey may only be completed once. Entering more than once will disqualify from the opportunity to win the prize.
- One lucky winner will be selected from the survey returns and will be selected on Friday, October 16, 2020.
- The '3-night Lighthouse Holiday Break' must be availed of within 12 months of winning the prize (dates subject to availability at the selected lighthouse).

# Welcome to Ireland's Shannon Region

# Contents



Ref	Attraction	See page...
1	The Shannon Estuary Way	7
2	Shannon Ferry	7
3	Tullamore D.E.W. Visitor Centre	9
4 5	The Great Outdoors	9
6	Birr Castle Gardens & Science Centre	10
7	Birr Heritage Town	11
8	Roscrea Heritage Centre	11
9	Holycross Abbey	11
10	Nenagh	12
11	John Hanly & Co. Ltd	13
12	Lorrha Monastic Village	13
13	Mountshannon	15
14	O'Briensbridge Village	15
15	Lough Derg Blueway	16
16	Ballina Killaloe	16
17	Visit East Clare	17
18	Discover Lough Derg	18/19
19	Portumna	20
20	Clare Heritage & Genealogy Centre	20

## Shannon Ferry Ltd. 2

A gateway between the west and south west. No reservations required.

### June to August

Depart	Killimer	Tarbert
Mon. thru Sat.	07:00	07:30
Sun.	09:00	09:30
Departures every hour		
Last Departure	21:00	21:30

### October to March

Depart	Killimer	Tarbert
Mon. thru Sat.	07:00	07:30
Sun.	09:00	09:30
Departures every hour		
Last Departure	19:00	19:30

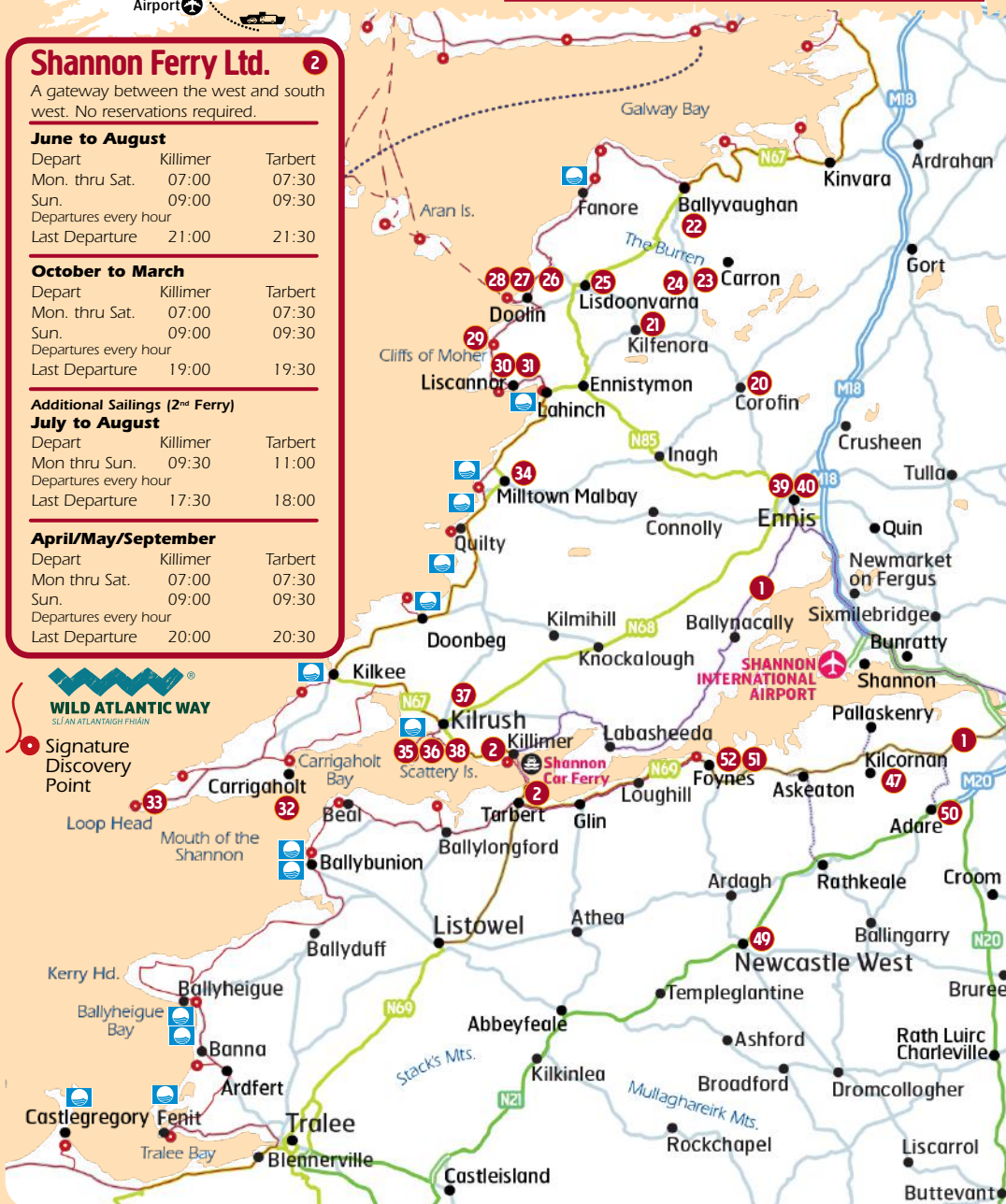
### Additional Sailings (2<sup>nd</sup> Ferry)

#### July to August

Depart	Killimer	Tarbert
Mon thru Sun.	09:30	11:00
Departures every hour		
Last Departure	17:30	18:00

### April/May/September

Depart	Killimer	Tarbert
Mon thru Sat.	07:00	07:30
Sun.	09:00	09:30
Departures every hour		
Last Departure	20:00	20:30



Signature Discovery Point



Sustainable printing practices implemented. Please **pass on** or **recycle** when finished.

Ref	Attraction	See page...
21	The Burren Centre	21
22	Aillwee Cave & Birds of Prey Educational Centre	22/23
23	Poulnabrone Dolmen	24
24	Caherconnell Fort	24
25	Burren Smokehouse	25
26	Doolin Cave	25
27	Doolin2Aran Ferries	26
28	Doolin Ferry Co—Bill O'Brien's	26
29	Cliffs of Moher Visitor Experience	27
30	The Rock Shop	28
31	Moher Hill Open Farm	28
32	Dolphinwatch	29
33	Loop Head Lighthouse	29
34	Miltown Malbay	30
35	Scattery Island Centre	31
36	Vandeleur Walled Garden & Woodland Bistro	31
37	Dolphin Discovery	32
38	West Coast Aqua Park	32

Ref	Attraction	See page...
39	Clare Museum	33
40	Ennis Friary	33
41	Saint Mary's Cathedral	35
42	King's Island	36
43	The Hunt Museum	36
44	The People's Museum of Limerick	37
45	Limerick City Gallery of Art	37
46	Milk Market Limerick	38
47	Stonehall Wildlife Park	38
48	Lough Gur Heritage Centre & Lakeshore Parklands	39
49	Desmond Castle Newcastle West	39
50	Adare Heritage Centre	40
51	Foynes Heritage Town	40
52	Foynes Flying Boat & Maritime Museum	41
Special Discoveries—Festivals		42/43
Special Discoveries—Blue Flag Beaches		44/45
Special Discoveries—Fantastic Family Fun		46
A-Z Index		47

**For details on Attraction Offers & Events visit [YourDailyAdventure.com](http://YourDailyAdventure.com)**

**1** The Shannon Estuary Way  
 Blue Flag Beaches  
 Car Ferry Crossing

**Opening Dates and Times**  
 Opening Dates and Times are subject to change and may vary throughout the seasons and by day of week. Establishments indicating 'open year-round' may still close, for instance, on Christmas Day. We recommend you verify dates and times directly with each featured establishment, particularly if travelling distances. Entertainments operate subject to demand and pre-booking is normally required.

**Admission Rates**  
 The admission rates quoted in this publication are the normal rates for individual adult admissions, children and families. Many of the featured attractions and entertainments do offer special rates for groups, students and seniors. The rates quoted are the 2020 rates as submitted by the individual businesses.

**Errors and Omissions**  
 Every care has been taken in the compilation of this guide to ensure its accuracy and compliance with the consumer protection laws of Ireland. Glance Promotions cannot accept responsibility for errors or omissions, but where such are brought to our attention future editions will be amended accordingly.

Aside from the great river itself, the Shannon Region is perhaps best-known as being home to the Burren and the Cliffs of Moher— one of Ireland's top scenic visitor attractions. But, extending as it does from the Lakelands right in the centre of Ireland to the Atlantic Ocean, the Shannon Region is home to many other wonders.

## Cead Mile Fáilte a Hundred Thousand Welcomes – to Ireland's Shannon Region!

Situated on the mighty Atlantic Ocean, the Shannon Region is renowned for its great beauty, activity and history and for its wealth of great visitor attractions and entertainments.

This free publication aims to enhance your visitor experience.

## Plenty of choice

Variety is the essence of a good holiday and Ireland's Shannon Region certainly provides a wide range of attractions and visitor experiences from show caves to visitor farms, dolphin watching and boat trips, historic houses and museums, castles and monastic sites, through to a wealth of water based and outdoor activities.

Detailed information is included on each attraction and visitor experience including eircodes and sat nav co-ordinates, opening times and admission rates.

## Enjoy!

Finally, we do hope that you take the time to explore the rich heritage and delights of the Shannon Region and that your 'Daily Adventure' is a rewarding and enjoyable one.

Guides for other regions in Ireland are widely available.

We would welcome your feedback on the guide to [info@glancepromotions.ie](mailto:info@glancepromotions.ie)



This brand is a trademark of Fáilte Ireland and is used in this publications with their permission.



Published by

**GLANCE**

Publisher, John Rice.  
Published by Glance Promotions,  
Tipperary, Ireland.  
Tel: 061-338588,  
[info@glancepromotions.ie](mailto:info@glancepromotions.ie)  
[www.glancepromotions.ie](http://www.glancepromotions.ie)  
Design: OpticNerve.ie

Associate Member of



First European Member of



The International Association of  
Visitor Information Providers

Available from



**Tourist Information Offices**





# The Shannon Estuary Way

## Clare & Limerick

### Shannon Estuary... The Story



The Shannon Estuary is a spectacular and unspoilt estuary located just off the Wild Atlantic Way. This area of remarkable natural beauty is where Ireland's longest river—the mighty Shannon flows into the azure water of the Atlantic Ocean. Along the Shannon Estuary drive, you will find delightful towns, pretty villages and world famous shore fishing sites. The Shannon Estuary drive is a

looped route of approximately 207km and incorporates the following locations: Bunratty, Ennis, Clarecastle, Ballynacally, Killadysert, Labasheeda, Killimer, Tarbert, Foynes, Askeaton, Kilcornan and Limerick City. Shannon Ferry connects the region with a short crossing from Killimer to Tarbert. While crossing, keep an eye out for the bottlenose dolphins that live in the waters of the estuary.

## Visiting



**Contact**  
The Shannon Estuary Way  
Clare & Limerick  
[www.clare.ie](http://www.clare.ie)  
[www.limerick.ie](http://www.limerick.ie)



**Location**  
The Shannon Estuary is a large tidal estuary on the west coast of Ireland where Ireland's longest river—the Shannon joins the Atlantic Ocean



**Information**  
The Shannon Estuary Way covers the counties of Clare & Limerick which offer a wide variety of accommodation, visitor attractions and services along the route. Further information is available from the regions tourist offices



# Shannon Ferry

## Killimer, Kilrush, Co. Clare

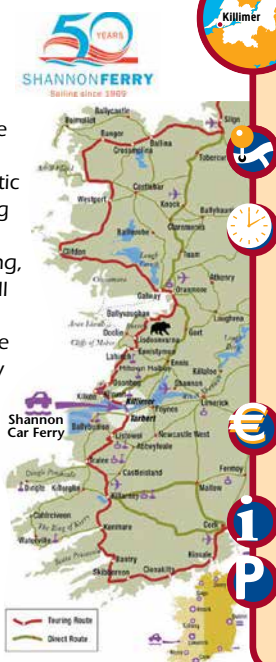


### Bridging the best of Ireland's West



From early morning as the mist descends the Shannon Estuary, to the setting of the sun in the late of the evening, ShannonFerry will take you and your vehicle on this memorable 20 minute journey across the estuary linking the iconic tourist destinations of the Banner County of Clare to the Kingdom of Kerry.

This is a lovely experience for visitors who would like a short break on their journey to relax as they sail across the majestic Shannon Estuary. As the only vehicle ferry trip on the main spine of the Wild Atlantic Way, this invigorating journey allows you experience the rugged nature of land and sea as you breathe in the fresh salty sea air that encapsulates Ireland's Wild Atlantic Way.



**Contact**  
ShannonFerry Group  
Killimer, Kilrush, Co. Clare, V15 FK09  
Tel: 065-905 3124  
[enquiries@shannonferries.com](mailto:enquiries@shannonferries.com)  
[www.shannonferries.com](http://www.shannonferries.com)



**Location**  
Killimer: 11 km off the N68 (between Ennis and Kilrush)—take R485 and R486. From the Burren & Cliffs of Moher, take the N67 to Killimer



**SatNav: Latitude/Longitude**  
52.61503, -9.38081 Killimer  
52.5873, -9.3599 Tarbert



**Ferry Times**  
Operates all year round, except Christmas Day. Ferry leaves Killimer every hour on the hour (07:00–19:00h) and Tarbert every hour on the half hour (07:30–19:30h) Half hourly sailings during high season months until 21:00h from Killimer and 21:30h from Tarbert



**Admission Rates**  
Car single €20, return €30 (including passengers). Discounts available online @ [shannonferries.com](http://shannonferries.com)



**Information**  
Visitor centre open 09:00–19:00h



**Parking**  
Coach and car parking available



# OFFALY

IRELAND'S HIDDEN GEM

# DISCOVER HIDDEN GEMS



WHERE TIME STANDS STILL



GET OFF THE BEATEN TRACK



WHERE SCIENCE & NATURE COLLIDE



STEER YOUR OWN COURSE



ENJOY A TIPPLE



INTO THE WILD

[www.visitoffaly.ie](http://www.visitoffaly.ie)

[f/visitoffaly](https://www.facebook.com/visitoffaly) [@visitoffaly](https://www.instagram.com/visitoffaly) [@visitoffaly](https://twitter.com/visitoffaly)



Ireland's Hidden  
HEARTLANDS



IRELAND'S  
ANCIENT EAST

Offaly Local Development Company



Rianna na Mídeanna  
Government of Ireland



The European Union of Rural  
Development Funds  
supporting us to get ahead





# Tullamore D.E.W. Visitor Centre

Tullamore, Co. Offaly

## Home of Tullamore D.E.W. Irish Whiskey



For whiskey explorers eager to learn about the history and craft of Tullamore D.E.W. Irish Whiskey, a visit to the home of the brand is a must. This unique visitor experience is set in Tullamore D.E.W.'s original 19th century bonded

warehouse on the banks of the grand canal in the town of Tullamore, Co. Offaly. Choose from one of three whiskey journeys and get up close and personal with the history and heritage of Ireland's original

triple blend. You'll be personally welcomed and guided by a whiskey expert from beginning to end; starting with the birth of a blend and finishing with your very own triple tasting.

**Book your tour @**  
[www.tullamoredeew.com](http://www.tullamoredeew.com)

## Visiting



### Contact

Tullamore D.E.W. Visitor Centre  
Bury Quay, Tullamore  
Co. Offaly, R35 Y5V0  
Tel: 057-932 5015  
info@tullamoredeew.com  
www.tullamoredeew.com



### Location

Tullamore is 1hr from Dublin and Galway, just off Exit 5 on the M6



### SatNav: Latitude/Longitude

53.2777, -7.4932



### Opening Times

Tours run Mon to Sat from 10:00h  
Sundays and B/Holidays from 11:30h  
Last admission 17:00h



### Admission Rates

2020: **Curious Taster's Journey** €17  
**Whiskey Wise Masterclass** €29  
**Ultimate Distillery Experience** €90  
(by appointment only)



### Information

Fully licensed whiskey bar, restaurant and gift shop. Guided Tours available



### Parking

Public parking available



# The Great Outdoors

Co. Offaly

## Parklands and Mountains

### Lough Boora Discovery Park

A unique natural attraction, this park's boglands are now a habitat for a wide range of flora and fauna including over 130 species of bird. There are many walks to be enjoyed including Mesolithic Walk, Boora Lake Walk and the Sculpture Walk. 'Sculpture in the Parklands'—a collection of 15 outdoor sculptures is also on display here and worth a visit.

### Slieve Bloom Mountains

The rolling hills of the Slieve Bloom Mountains are a land of forests and blanket bog rich in archaeology, history, tradition and culture. Enjoy one of the many day treks, eco walks and looped walks. Stop off points along the marked walks include

waterfalls, ring forts, eskers and much more. Maps are available from local tourist information offices/points. Some are available by download from the website.



## Visiting



### Contact

Lough Boora Discovery Park  
www.loughboora.com  
Slieve Bloom Mountains  
www.slievebloom.ie



### Location

Lough Boora Parklands  
Eircode R35 DA50: On the R357 between the villages of Cloghan and the Blueball

### Slieve Bloom Mountains

Trailheads of walks are located at various points around the mountain. See website for details



### SatNav: Latitude/Longitude

Lough Boora 53.2336, -7.7201  
Slieve Bloom 53.0744, -7.6123



### Parking

Lough Boora Discovery Park: parking available on-site  
Slieve Bloom Mountains: parking available at trailheads





# Birr Castle Gardens & Science Centre

Birr, Co. Offaly



## Celebrating 400 years... 1620–2020



### World Famous 'Great Telescope'

Discover the largest telescope in the World for over 70 years, created by the 3rd Earl of Rosse in the 1840's on the Castle grounds.

### Ireland's Historic Science Centre

A welcome video and hologram introduces you to the earlier Earls and Countesses of Rosse. Explore the seven galleries of astronomy, engineering and photography.

**'In the heart of Ireland, a park that has won Guinness Records, a green jewel of world renown'**

Eliana Ferioli—The Great Gardens of Europe



### Ireland's Tallest Treehouse and Award Winning Gardens

See the world in 120 acres. Meander through beautifully landscaped and natural parkland with 5 km of walking paths, boasting a worldwide plant collection.

The Formal Gardens are surrounded by the romantic Hornbeam Cloister walk, with plants exclusive to the Demesne and the world's tallest box hedges.

The Treehouse Adventure Area features Ireland's tallest treehouse, sand pit, covered picnic area, play zones from toddlers up. New upgrades in 2019.

## Visiting



### Contact

Birr Castle Gardens & Science Centre  
Birr, Co. Offaly, R42 V027  
Tel: 057-912 0336  
reception@birrcastle.com  
www.birrcastle.com



### Location

Located in the heritage town of Birr and within a short drive of many places of interest such as the monastery at Clonmacnoise, Tullamore Dew Visitor Centre and The Shannon River in Athlone



**SatNav: Latitude/Longitude**  
53.0967, -7.9143



### Opening Times

Jan to Mar, 09:00–16:00h  
Mid March to Oct, 09:00–18:00h  
Nov to Dec, 09:00–16:00h



### Admission Rates

Adult €9.50, Child (5–16yrs) €5  
U4 Free. Family (2+2) €26  
General admission tickets are available to purchase on line  
**Castle Tours:** €20 (over 12 only)  
seasonal, pre booking is required



### Information

Courtyard café opens Mar to Dec  
Gift Shop



### Parking

Car parking close by. Free coach parking





# Birr Heritage Town

**Birr, Co. Offaly**



Turning back the clock to the elegance of the Georgian era, Birr has stayed true to its 18th and 19th Century character, with tree-lined malls and avenues and wonderful Georgian Architecture. The narrow main streets retain their beautiful shop fronts. There are also two churches and a Wesley Chapel built in the gothic style. Birr Castle Gardens and Science Centre is a must see.



## Visiting



### Location

Eircode R42 KC56: Birr is just 35 minutes north of Nenagh and is located at the junction of the National Routes, N62 and N52



### SatNav: Latitude/Longitude

53.0960, -7.9105



### Information

Great range of accommodation, restaurants, cafés and shopping available



### Parking

Public on street parking

# Roscrea Heritage Centre

—Roscrea Castle & Damer House

**Roscrea, Co. Tipperary**

Roscrea Castle consists of a gate tower, curtain walls and two corner towers dating from the 1280s. The rooms are furnished and some house exhibitions.

Built in the early 18th century in the Queen Anne style, Damer House is an example of pre-Palladian architecture. Within the complex, there is a restored mill displaying original St. Cronan's high cross and pillar stone.



## Visiting



### Contact

Roscrea Heritage Centre – Roscrea Castle & Damer House, Castle Street Roscrea, Co. Tipperary, E53 F652  
Tel: 0505-21850  
roscreaheritage@opw.ie  
www.heritageireland.ie



### SatNav: Latitude/Longitude

52.9551, -7.7980



### Opening Times

Mar 26 to Sept 30  
Daily 10:00–18:00h  
Last admission 45mins before closing



### Admission Rates

Adult €5, Senior/Group €4  
Child/Student €3, Family €13  
Guided tours on request



### Parking

Public car & coach park close to site

# Holycross Abbey

**Thurles, Co. Tipperary**

Holycross Abbey is one of Ireland's National Monuments. Anyone interested in ecclesiastical sites will have this at the top of their 'to visit' list. Founded in the 12th century by Donal Mor O'Brien for the Benedictine Order, but later transferred to the Cistercians, it was abandoned in the 1600s. The Abbey has been lovingly restored to its former glory as one of Ireland's finest Irish 15th century churches.



## Visiting



### Contact

Holycross Abbey  
Holycross Village  
Co. Tipperary, E41 PH01  
holycrossabbeytours@gmail.com  
www.holycrossabbey.ie



### SatNav: Latitude/Longitude

52.6397, -7.8681



### Information

Great range of accommodation, restaurants, cafés and shopping available



### Parking

Ample parking available

# Nenagh

Nenagh, Lough Derg, Co. Tipperary

## Welcome to Nenagh 800



2020 sees Nenagh celebrating 800 years of the development and history of the town of Nenagh. Follow social media @Nenagh800 for events and gatherings.

As a compact town a visitor walking its streets can view or visit its Franciscan Friary ruins, old Jailhouse block and gateway, restored Courthouse, newly reopened Castle, and the Nenagh Heritage Centre in the old Governor's House.

Close to Lough Derg where you can try sailing, canoeing and boat hire. Try one of the many walking and cycling routes that start in the town or enjoy Nenagh Town Park.

## Visiting



### Contact

Nenagh Tourist Office  
Nenagh Arts Centre  
Banba Square, Nenagh  
Co. Tipperary, E45 Y660  
Tel: 067-31610  
director@nenagharts.com  
www.nenagh.ie  
www.tipperarycoco.ie



### Location

West of the M7 Dublin to Limerick motorway, exits 24 & 26  
9km east of Lough Derg



**SatNav: Latitude/Longitude**  
52.8642, -8.1975



### Information

Historic buildings, restaurants, cafés, accommodation, and shopping available. Follow Social Media @Nenagh800 for events throughout the year



### Parking

Ample parking available



# OPW

## BUY AN OPW HERITAGE CARD & EXPLORE IRELAND'S WONDERFUL HERITAGE



Jerpoint Abbey

Castletown House

Donegal Castle

Dún Aonghasa

Free admission to more than 45 of Ireland's finest heritage sites

## Unlimited access for up to one year

€40

Adult

€30

Senior

€10

Child/Student

€90

Family

Heritage Cards can be purchased at participating heritage sites

by phone: 01-647 6592 / Lo Call 1850-600 601

Find us on Facebook



Full details: [www.heritageireland.ie](http://www.heritageireland.ie)





# John Hanly & Co. Ltd

## Factory Shop

Nenagh, Lough Derg, Co. Tipperary

### A unique shopping experience

John Hanly & Co. Ltd was established in 1893 and since then has been weaving quality fabrics and accessories in cashmere, merino wool, lambswool and mohair. These products are sold to top brands, designers and quality retailers around the world.

In the Factory Shop see the complete collection of Hanly scarves, shawls, throws, gents and ladies jackets and tweed caps. The shop also stocks an extensive selection of quality Irish Knitwear, table linen and unique crafts and gifts from all over Ireland.

The Factory Shop is open only when the factory is open. During holiday time it

is advisable to ring in advance to make sure the shop is open.

**10% discount applicable on presentation of this guide at the factory shop.**



## Visiting



### Contact

John Hanly & Co. Ltd  
Ballyartella Woollen Mills  
Nenagh, Co. Tipperary, E45 P789  
Tel: 067-24278  
office@johnhanly.com  
www.johnhanly.com



### Location

Situated in Ballyartella just 1km off the R495 (the Nenagh to Dromineer Road) Follow the signs



**SatNav: Latitude/Longitude**  
52.9019, -8.2397



### Opening Times

Open 10:00–18:00h Monday to Friday (closed 12:45–13:15h)



### Information

Orders shipped world wide



### Parking

Free car parking on-site



# Lorrha Monastic Village

Lorrha, Co. Tipperary

Lorrha Monastic Village, founded in 550AD by Saint Ruadhán, boasts an ancient Holy Well, a 10th century church, Dominican Priory and an Augustinian Priory. Within driving distance is Lackeen Castle and Redwood Castle. This village is on the Beara Breifne route. Local volunteers run the shop, tea-rooms and heritage centre—the focal point of the village.



## Visiting



### Contact

SCÉAL Café  
Lorrha Hall, Lorrha, Nenagh  
Co. Tipperary, E45 A097  
Tel: 087-203 1798 / 086-330 8172  
info@visitlorrhadorrha.com  
www.visitlorrhadorrha.com



**SatNav: Latitude/Longitude**  
53.0945, -8.1224



### Opening Times

Shop/tea-rooms/heritage centre  
Mon to Fri 09:30–16:30h  
Sat & Sun 09:30–14:00h



### Admission Rates

Self-guided (Free)  
Guided tour €7pp

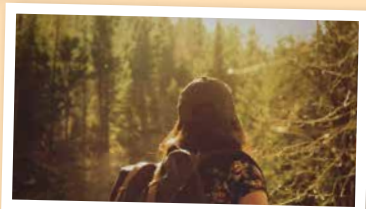


### Information

Package deals on tour/dinner & visits to other sites arranged

# Beara Breifne Way

Journey across six mountain ranges and along the banks of the River Shannon, and discover the historic links to Dónal Cam O'Sullivan Beare's fourteen-day march as you walk in his footsteps. [www.bearabreifneway.ie](http://www.bearabreifneway.ie)



# County Clare is amazing. Take it ALL in!



Take the time to **EXPLORE** County Clare, and be rewarded with wonderful experiences and fond memories.

- The amazing beaches, cliffscapes, and seascapes along Clare's **Wild Atlantic Way**.
- The spectacular **Loop Head Peninsula**, and the **Shannon Estuary Way**.
- The famous **Burren and Cliffs of Moher UNESCO Global Geopark**.
- **Ireland's Hidden Heartlands** - the **River Shannon**, the **East Clare Lakelands**, and **Lough Derg Blueway** for great activities.
- Welcoming **towns and villages** offering a wealth of dining options, historical attractions, traditional entertainment, and craft shopping.
- Wonderful **activity, sporting, leisure, and heritage attractions**.



For great ideas, check out [VisitClare.ie](http://VisitClare.ie)





# Mountshannon

Mountshannon, Lough Derg, Co. Clare

A beautiful & scenic village dating to the 18th century



Mountshannon is an attractive village near the Clare shoreline of Lough Derg which offers many amenities to visitors. Activities include golfing, woodland walking, cycling, boating, fishing and swimming. The locality has some very interesting historical sights such as Ringforts and a Wedge Tomb known locally as

"The Dolmen". No visit would be complete without a trip to Holy Island one of the most famous monastic settlements in Ireland established in the 8th Century. Its many attractions include a well preserved Round Tower, the ruins of six churches and a cell like structure which is one of the most extraordinary buildings in Ireland. Boat trips and guided tours available.

The focal point of the village of Mountshannon is Aistear Iniscealtra, a 4.5 acre community park. There are over three and a half thousand trees, plants and shrubs planted throughout the park. A large green area has been retained for recreational and relaxation purposes.

## Visiting



**Contact**  
Mountshannon  
Lough Derg, Co. Clare  
[www.mountshannon.com](http://www.mountshannon.com)

**Location**  
Located on the shores of Lough Derg, East Clare on the R352

**SatNav: Latitude/Longitude**  
52.9319, -8.4279

**Information**  
Restaurants, Pubs and Cafés

**Parking**  
There is on street parking available



# O'Briensbridge Village

O'Briensbridge, Co. Clare

A haven for walkers and anglers



The picturesque village of O'Briensbridge is linked to its sister village, Montpelier in County Limerick on the other side of the river Shannon, by a stone bridge built by Turlough O'Brien in 1506.

The section of the river just down from O'Briensbridge is a very popular angling and water sports spot. Just upstream at Parteen the flow of the Shannon is diverted into a man-made canal—built to allow navigation of boats and barges to the city of Limerick. Today, the canal is being developed as an attractive area for recreation and water activities.

The village has a public playground, picnic area and is also the starting point for the O'Briensbridge — Old Barge Loop Walk. Along this trail you can experience a little piece of history, as it includes the old canal towpath used, in years passed, for horses to pull barges up the waterway.

## Visiting



**Contact**  
O'Briensbridge, Co. Clare  
[www.clare.ie](http://www.clare.ie)

**Location**  
From the M7 take exit 27 into Birdhill and follow signs to O'Briensbridge. From Limerick take the R463 towards Killaloe

**SatNav: Latitude/Longitude**  
52.7535, -8.4985

**Information**  
For fishing O'Briensbridge is a good coarse angling base

**Parking**  
There is ample car parking available in the village





# Lough Derg Blueway

Clare, Tipperary and Galway

It's time for you to visit!



Imagine the scene: 13,000 hectares of clear water surrounded by beautiful and dramatic countryside in three Irish counties (Clare, Tipperary and Galway), and traversed by a series of on-water and water-side trails that provide the opportunity for exhilarating activities and adventures.

Blueway trails link towns and villages across Ireland's waterways. Enjoy looped walks dotted around the Lakelands Lough Derg, where you can enjoy magnificent scenery and sample delicious local food.

You can experience these trails solo, or with family or friends, by canoe, paddleboard, bicycle, or on foot. And, there is even more to enjoy on a break, including historical attractions, entertainment, events, great eateries, craft shopping, and cosy places to stay.

## Visiting



**Contact**  
Lough Derg Blueway  
[www.discoverloughderg.ie](http://www.discoverloughderg.ie)  
[www.bluewaysireland.org](http://www.bluewaysireland.org)



**Location**  
The Lakelands of Lough Derg



**Information**  
Lough Derg Blueway covers the counties of Clare, Tipperary and Galway and offers a wide variety of accommodation, visitor attractions and services along the route. Further information is available from the regions tourist offices



# Ballina Killaloe

Birthplace of Brian Boru

Ballina Killaloe, Lough Derg, Co. Clare

On Limerick's Doorstep

Just under 20 minutes from Limerick, Killaloe was once Ireland's capital as the 11th century seat of Brian Boru (940-1014), High King of Ireland.

Killaloe connects Clare and Tipperary with a 13 arch bridge to the village of Ballina. 13th century St. Flannan's Cathedral, unique for its stone carving inscriptions is in Killaloe, while

both villages host restaurants, galleries and shops as well as a Sunday Farmers Market.

The Lough Derg Way & The East Clare Way walking routes offer spectacular views of Lough Derg along the way. Ballina Killaloe is a popular spot for fishing and many watersports activities.



## Visiting



**Contact**  
Ballina Killaloe Tourist Office  
Eircode V94 NWIK (seasonal)  
Nenagh Tourist Office  
Eircode E45 Y660  
Tel: 067-31610



**Location**  
20 minutes from Limerick



**SatNav: Latitude/Longitude**  
52.8073, -8.4402



**Information**  
A range of restaurants, cafés, shopping and accommodation available



**Parking**  
Ample parking available







# Visit East Clare

East Clare, Co. Clare



## Your ultimate holiday experience!

East Clare encompasses the spirit of Ireland's Hidden Heartlands. Get active in Nature and explore the region's natural hidden treasures by exploring great walking trails, greenways and woodlands.

Enjoy pristine waterways with boating, fishing, kayaking & paddling and experience the beauty of the River Shannon as it settles into the picturesque Lough Derg.

Every season delights the visitor with traditional music played all year round by world class musicians in every Community.

The history of storytelling in Ireland is celebrated not only in song, but is integral to the multitude of festivals embracing Irish Culture and Heritage; the Artists and Artisans are rivaled only by the spectacular nature and scenery.

An abundance of choice with quality local produce and a warm welcome will entice you to stay. A choice of accommodation from high standard B&Bs to Self-Catering properties to luxurious hotel rooms is waiting for you!

East Clare... she is the perfect creature... natural in every feature...

Nestled in between the Wild Atlantic Way and Ireland's Ancient East is Ireland's Hidden Heartlands—a magical place to uncover.

**Come Visit. Play. Relax. Stay.**



COMHAIRLE CONTAE AN CHLAIR CLARE COUNTY COUNCIL

## And there's more!

East Clare is the perfect destination for those who wish to delve into Clare's rich heritage. From monastic and ancient sites, such as Holy Island, to churches, cathedrals and abbeys, spanning over 8 centuries, you will be spoiled for choice!

The best way to enjoy the local culture, the music, the stories and the people is to immerse yourself. Check out the numerous festivals and events celebrating traditions within local communities. For further information go to [www.visiteastclare.ie](http://www.visiteastclare.ie) or check out Facebook.

## Visiting



### Contact

[www.visiteastclare.ie](http://www.visiteastclare.ie)

### Location

Various locations in East Clare



### What's On

**Jan:** Shannonside Winter Music Festival, Sixmilebridge & Bunratty

**Mar & Apr:** St. Patrick's Day parades in Killaloe, Sixmilebridge, Scariff, Tulla

Seed Share @ Irish Seed Savers, Scariff

Blossom Harp Festival, Tuamgraney

**May & Jun:** Bodyke Festival

Tulla Traditional Music Festival

Tuamgraney Community Weekend

Mountshannon Arts Festival

Killaloe Chamber Festival

Bealtaine National Festival—events all over East Clare

**Jul & Aug:** Féile Brian Ború, Killaloe

Scariff Harbour Festival

Feakle International Traditional Music Festival

Tulla Weekend of the Welcomes

Kilmurry Harvest Festival

National Heritage Week—events all over East Clare

**Sep & Oct:** A Taste of Lough Derg—events all over East Clare

Quest Lough Derg, Killaloe/Ballina

Dawn Walk on Ballycuggaran, Killaloe

Mountshannon Trad Fest

Kincora Trad Fest, Killaloe





# Discover

Counties Clare, Tipperary, Galway



## The Lough Derg Lakelands

Lough Derg has 179 km of indented shoreline, stretching over 40 km from Portumna at its northern tip to Killaloe and Ballina in the south. 12 kms, at its widest point, Lough Derg is an area of great charm, natural beauty and heritage.

Many exciting activity options are available in the Lough Derg area that will inspire, relax or energise you. Spectacular countryside terrain and the wonderful waters of the lake make an ideal setting for many pursuits.



### The Lough Derg Blueway

13,000 hectares of clear water surrounded by beautiful and dramatic countryside provides the opportunity to experience on-water and water-side trails, exhilarating activities, and adventures. Experience the Lough Derg Blueway by canoe, paddleboard, bicycle, on foot, cruising or angling. The Blueway is a 160km paddle trail that can also be enjoyed through a whole series of walking loops, routes and trails each bringing the magnificent lake into view.



### The White Tailed Eagle

In 2013 the first white tailed eagles born in Ireland in over a century hatched near Mountshannon on Lough Derg. These amazing birds and chicks can be easily viewed using binoculars and scopes from the shore at Mountshannon Harbour or the bird hide in Mountshannon. There is also a bird hide in Portumna to view the eagles that have nested there.



### Towns & Villages

Towns and villages like Killaloe, Ballina, Portumna, Mountshannon, Nenagh and beyond offer a wealth of lively pubs, bistros and fine dining options as well as, antiques, fine architecture,



# Lough Derg



traditional Irish music, local art and craft pieces and great shopping.

Whether you visit for a day or a week, opt for a cruiser, the luxury of a stately home, the facilities of a hotel, or the fun of a farmhouse holiday, you'll find that perfect holiday accommodation in the Lough Derg area.

## More Information

Lough Derg is a destination bursting with locations, experiences, sites, and activities to explore. This information offers only a flavour of the possibilities. For comprehensive information, and further details you are best advised to ask locally and log onto [www.DiscoverLoughDerg.ie](http://www.DiscoverLoughDerg.ie)

## Heritage

Over 90 heritage sites are accessible around Lough Derg as the lake has a long history of habitation and its shores have been settled since prehistoric times. In the early medieval times it served as an integral part of the water highway from the Atlantic Ocean to the Irish midlands and beyond. Climb the 101 steps of the 13th Century Nenagh Castle or travel back in time at The Irish Workhouse Centre in Portumna. Holy Island/Inis Cealtra in the middle of Lough Derg is a must visit to explore the heritage and history of Lough Derg.



## Visiting



**Contact**  
[www.DiscoverLoughDerg.ie](http://www.DiscoverLoughDerg.ie)



**Location**  
Counties Clare, Tipperary, Galway

**SatNav: Latitude/Longitude**

### HISTORIC SITES

Portumna Castle 53.0927, -8.2185  
Nenagh Castle 52.8650, -8.1981  
Holy Island 52.9151, -8.4517

### LAKESIDE TOWNS & VILLAGES

Dromineer 52.9248, -8.2756  
Killaloe|Ballina 52.8088, -8.4475  
Terryglass Village and Harbour 53.0564, -8.1987  
Mountshannon 52.9317, -8.4298  
Nenagh 52.8650, -8.1981  
Ogonneloe 52.8869, -8.4589  
Portore/Garrykennedy 52.8926, -8.3576  
Portumna 53.0927, -8.2185  
Puckane 52.9318, -8.2385  
Scarriff 52.9088, -8.5331  
Tuamgraney 52.8985, -8.5410  
Whitegate 52.9505, -8.3729  
Woodford 53.0521, -8.4002

### VIEWING POINTS

Ballycuggeran Woods 52.8346, -8.4625  
Lookout 52.8795, -8.3948  
Millennium Cross 52.8553, -8.3978  
Portumna Forest Park 53.0904, -8.2452  
Tountinna 52.8472, -8.3922

### LAKESIDE PARKS

Two-Mile-Gate 52.8346, -8.4625  
Castlough 52.8870, -8.3942  
Dromineer 52.9248, -8.2756  
Ballina 52.8102, -8.4415  
Mountshannon 52.9317, -8.4298



**Lough Derg**  
LAKELANDS

# Portumna

Portumna, Lough Derg, Co. Galway

## On Lough Derg, Ireland's pleasure lake

A Medieval Town set on the idyllic banks of Lough Derg, Portumna is a main centre for hire cruisers and watersports. Activities include walking, cycling, golf, go-karting and equestrian sports.

Portumna's public Forest Park offers a first-class wheelchair and buggy-friendly walkway and viewing platform along with other forest walks.

Portumna Castle and Gardens is a semi-fortified house built in 1618 with grounds. The ground floor of the castle is open to the public.

Portumna is also a great base for a wide range of



local activities & attractions, including The Irish Workhouse Centre, Dominican Priory, Pallas Karting & Paintball, Shannon Cruising, Portumna Golf Club, Portumna Heritage Trail, the Friday Country Market and much more.

There is free parking available all over Portumna.

## Visiting



### Contact

Portumna  
Lough Derg, Co. Galway, H53 WC63  
[www.visitportumna.com](http://www.visitportumna.com)  
[www.discovoughderg.ie](http://www.discovoughderg.ie)



### Location

Portumna is a town in the South-East of County Galway, on the border of County Tipperary. The town is located to the West of the point where the River Shannon enters Lough Derg



**SatNav: Latitude/Longitude**  
53.0923, -8.2193



### Information

Great range of accommodation, restaurants, cafes and shopping available



### Parking

Free on-street and off-street public parking available adjacent to the town centre and amenities



# Clare Heritage & Genealogy Centre Burren National Park Information Point

Corofin, Co. Clare

## Trace your roots & discover your past

Founded in 1982, this flagship Genealogical Centre has the largest collection of genealogical material housed in any one place, to enable persons with Co. Clare roots to trace their forebears. The parish registers from all of Co. Clare's 47 parishes form the core of a unique database that includes a range of Civil Records comprising rentals, valuations, tithe assessments, estate maps and papers, census returns, obituaries and gravestone inscriptions.

Located within the campus is the Clare Heritage Museum, an award-winning presentation of the material aspects of

19th century social, educational and folk life. The Burren Information Point provides information on the Burren National Park and includes free guided walks of the National Park in addition to a free Bus service to the Park from May to August.



## Visiting



### Contact

Clare Heritage & Genealogy Centre  
Church Street  
Corofin, Co. Clare, V95 X270  
Tel: 065-683 7955  
[clareheritage@gmail.com](mailto:clareheritage@gmail.com)  
[www.clareroots.com](http://www.clareroots.com)



### Location

13km north of Ennis, on R476



**SatNav: Latitude/Longitude**  
52.9420, -9.0653



### Opening Times

All year, Mon to Fri, 09:00–17:00h  
Museum: May to Oct, 10:00–17:00h  
Burren Information Point:  
Apr to Sep 10:00–17:00h



### Admission Rates

Museum: Adult €4. Children (5 years or under) Free. (6–18 years) €3



### Information

Tourist Information Point. Burren National Park Information Point located at the Centre  
Free Bus to Burren National Park daily from May to August



### Parking

On-street for cars and coaches





# The Burren Centre & The Kilfenora Ceili Band Parlour

Kilfenora, Co. Clare



## Gateway to the Burren

The story of the Burren is excitingly captured in 'A Walk Through Time' multi-dimensional exhibition at The Burren Centre in Kilfenora. The story unfolds through a series of vignettes, models, slides, artefacts and information panels.

Visitors get a comprehensive introduction to the geology, flora and fauna of the region, and an understanding of the history and effects of man on the unique landscape.

## The Kilfenora Ceili Band Parlour

Take a walk down memory lane and enjoy the exciting new exhibition entitled The Kilfenora Ceili Band Parlour which explores the music and history of this internationally renowned band. Exhibits provide a unique opportunity to trace the music and history of the internationally renowned Kilfenora Ceili Band. With the help of top of the range visual displays, artefacts, musical instruments, artwork and acoustics the music of The Kilfenora Ceili Band will visually and aurally come to life before you. The exhibition is in an intimate setting and will take you on a rare musical treat of the music of the new and old band. If you plan on visiting the Burren region this is a musical journey of discovery not to be missed, it has to be experienced.



Beautifully displayed artefacts, original works of art and enthralling life-like reproductions of human activity combine to provide an insight into the rich heritage of the Burren.

A visit to The Burren Centre Tea Rooms is a must where you will find all the best in traditional home made cuisine. Browse in the Craft Shop where exquisite locally produced crafts are on sale. A must see tourist attraction.

## Visiting



**Contact**  
The Burren Centre and The Kilfenora Ceili Band Parlour  
(Gateway to the Burren)  
Kilfenora  
Co. Clare, V95 W523  
Tel: 065-708 8030  
info@theburrencentre.ie  
www.theburrencentre.ie



**Location**  
On the R476 between Ennis and Lisdoonvarna, 24 km from Ennis, 8 km from Lisdoonvarna, 8 km from Ennistymon and 22 km from Ballyvaughan



**SatNav: Latitude/Longitude**  
52.9902, -9.2165



**Opening Times**  
Open daily. Last admission half an hour before closing time  
Mar 12 to May 31, 10:00–17:00h  
June 01 to Aug 31, 09:30–17:30h  
Sept 01 to mid-Oct, 10:00–17:00h



**Admission Rates**  
Adult €6. Student/Senior €5  
Children (6 years or under) free  
(6–16 years) €4  
Family (2+4) €20



**Information**  
Tea Rooms, Craft Shop  
Fáilte Ireland Visitor Information Point



**Parking**  
Free parking for cars and coaches





# Aillwee and Birds of Prey

Ballyvaughan, Co. Clare



## Ireland's Premier Show Cave

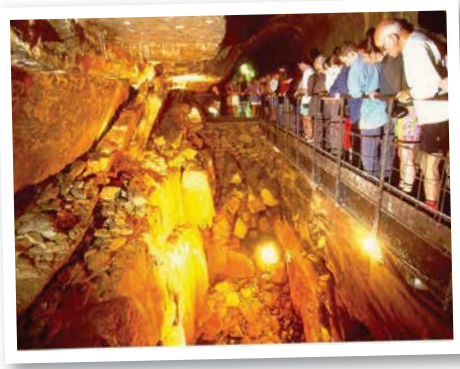
Aillwee continues to welcome visitors to The Burren for over 40 years. Awarded Family Venue of The Year from Irish Hospitality Awards and Best Tourism Experience from FBD Clare Business Excellence Awards, time spent at Aillwee Cave and Birds of Prey Centre promises memorable and educational experiences, scenic photo opportunities and a great day out!

Aillwee welcomes you to its underground surprises—CAVE of beauty. Expert guides will accompany you during your leisurely tour. Take a 35 minute stroll through the beautiful caverns, over bridged chasms, under weird formations and alongside the thunderous waterfall, which sometimes gently sprays the unsuspecting visitor!

Marvel at the frozen waterfall and explore the hibernation chambers of long-extinct brown bears. Your guide will bring you safely back to the outside world, where you can shop and browse through distinctly different Gift

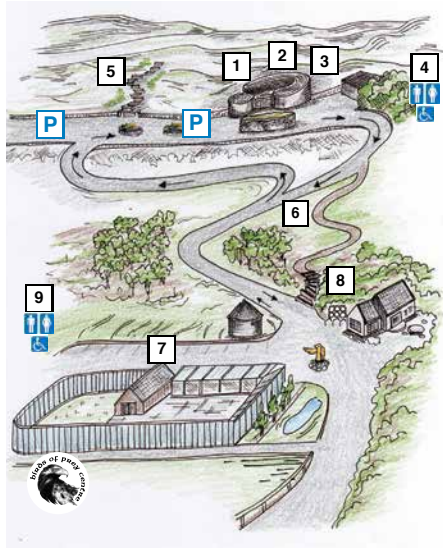
Shops housed in an award-winning complex.

**An Experience Not To Be Missed!**



### Aillwee Cave—The Cave underground

The Burren is a place full of wonder, beauty and discovery.



#### FACILITIES ON SITE

1. Information, Cave Tours & Cave Entrance
  2. Gift Shops
  3. Tea Rooms
  4. Toilets
  5. Mountain Walk
  6. Woodland Craft Village with daily demonstrations, the Archery Range, Woodland Craft Courses
  7. Birds of Prey Centre
  8. Farm Shop
  9. Toilets
- P = Parking



# Cave Educational Centre

WILD ATLANTIC WAY  
SUI AN ATLANTAIGH FHARAIN

## Birds of Prey Educational Centre



The Birds of Prey Educational Centre is set against the most stunning backdrops the Burren can offer and is home to one of the largest and most varied collection of Birds of Prey in the county—Eagles, Falcons, Hawks and Owls. Interactive information boards and audio guides provide further insight into all aspects of Birds of Prey. Daily flying displays provide a rare opportunity to see many species in dramatic free flight.



### A Hawk Walk

This is a once in a life time opportunity to interact with some of nature's top predators. Guided and instructed by experienced Falconers, this hour long "Walk with a Hawk" through hazel woodland and across Burren Limestone pavement is tailor made for anybody seeking a totally unique experience. To make a booking and for further details —Tel 065-7077036.



### Burren Gold Cheese

The Farm Shop at Aillwee has been the production site for the award winning Burren Gold Cheese since 1985.

Milk for the farmhouse cheese is sourced from a neighbouring farm, where their Friesian Dairy Herd graze the unique rich grasses and herbs of the spectacular Burren region of North County Clare. Burren Gold is a firm textured Gouda style cheese with a rich creamy taste. It comes in a variety of flavours — Plain, Smoked, Cumin, Garlic & Nettle and for something a little more exotic-Piri Piri. Why not pop in to the Farmshop and taste some delicious Burren Gold Cheese! You may even be lucky enough to see the cheese maker at work.



## Visiting

### Contact

Aillwee Cave  
Ballyvaughan, Co. Clare, H91 AX26  
Tel: 065-707 7036  
info@aillweecave.ie  
www.aillweecave.ie

### Location

5 km south of Ballyvaughan, Co. Clare just off the R480

**SatNav: Latitude/Longitude**  
53.0918, -9.1503

### Opening Times

Open daily all year 10:00–17:30h  
(Jul & Aug, 10:00–18:30h)  
NB. End of Nov and all of Dec mornings only

### Admission Rates

Cave Tour & Birds of Prey Centre:  
Adult €22  
Children €12  
Family Tickets €52/€58

### Information

Gift Shop and Tea Room. Farm Shop with Cheese and Fudge Making

### Parking

Extensive parking for cars and coaches



### Gift Shop and Tea Room

Visit the gift shop and choose from a treasure trove of crafts and gifts and then sit back in the tearoom and enjoy a homemade scone and a hot cup of coffee...

Lunches are available throughout the day.





# Poulnabrone Dolmen

Carron, Co. Clare

## Portal Tomb that dates back to 3200 BC



It comprises of a tabular capstone supported by two slender portal stones, and bordered by a nearby cairn.

While it is one of over 150 dolmens in Ireland, the magnificence of this dolmen means that it is often regarded as one of Ireland's most photographed monuments.

The final resting place of some of the first farmers of the Burren, it is a mystical place to wind down after a long day, as one sits in the peaceful and scenic surroundings of this unique landscape. While there take a picture through the dolmen as the sun descends in this special place.

The Burren's built history has left the ruins of round towers, ancient churches, high crosses, tombs, and holy wells.

On the side of the main R480 road from Corofin to Ballyvaughan, the Poulnabrone Dolmen is one such example of the Burren's built history. This ancient portal tomb dates back to the Neolithic period, 3200BC.

## Visiting



### Location

Near Carron, just off the R480 road from Corofin to Ballyvaughan

**SatNav: Latitude/Longitude**  
53.0469, -9.1409



### Parking

Off road parking



# Caherconnell Fort

## & Sheepdog Demonstrations

Carron, Co. Clare

## A modern experience of our magnificent past



Ongoing excavations by the Caherconnell Archaeological Field School have yielded fascinating results, enhancing Caherconnell's reputation as a prominent archaeological site.

### Sheepdog Demonstrations

Home to the only sheepdog demonstrations in the Burren, Caherconnell has featured on national television, in local and national press

and is a proud Trip Advisor & CIE Tours International Award of Excellence winner. Demonstrations daily March to October. Please see [www.Caherconnell.com/times/](http://www.Caherconnell.com/times/) for demonstration times.

### The Fort

A family run business, Caherconnell Fort is one of the best preserved stone forts in the Burren. The impressive visitor centre at Caherconnell provides a modern experience of our magnificent past.

## Visiting



### Contact

Caherconnell Fort  
Carron, Co. Clare, V95 YK31  
Tel: 065-708 9999  
[info@caherconnell.com](mailto:info@caherconnell.com)  
[www.caherconnell.com](http://www.caherconnell.com)



### Location

28km from Ennis and 10km from Ballyvaughan on the R480

**SatNav: Latitude/Longitude**  
53.0420, -9.1372



### Opening Times

March, April & Oct 10:00–17:00h  
May, June & Sept 10:00–17:30h  
July & Aug 10:00–18:00h



### Admission Rates

Fort: Adult €6  
Sheepdog Demonstrations:  
Adult €6  
Combined Ticket:  
Adult €10  
Family & Group rates available



### Information

Café offering hot lunch, home baking and fresh farm food a speciality. Extensive shopping



### Parking

Free monitored parking for cars and coaches







# Burren Smokehouse

Lisdoonvarna, Co. Clare



## Taste Smoked Irish Organic Salmon from the Burren!



Taste, Learn, Shop at the Burren Smokehouse with its two different visitor experiences. In one, you will learn all about their history on pictorial storyboards and the way they smoke their Irish Organic Salmon. Watch a video about the smoking process (in different languages), explore the kiln and taste the smoked salmon.

In the second, self-guided & interactive visitor centre, "Taste the Atlantic—The Salmon Experience", you will immerse yourself in the story of Irish Salmon. Follow it through time and watch the legend of the Salmon of

Knowledge unfold before your eyes. Learn about modern aquaculture, solve jigsaw puzzles and quizzes! Suitable for school kids and adults.

This family-owned business is passionate about local foods that you can buy in their Gourmet Shop, and even send to friends and family.

## Visiting



### Contact

Burren Smokehouse Ltd  
Lisdoonvarna, Co. Clare, V95 HD70  
Tel: 065-707 4432  
sales@burrensmokehouse.ie  
www.burrensmokehouse.ie



### Location

In Lisdoonvarna, N67 route  
10km from the Cliffs of Moher



### SatNav: Latitude/Longitude

53.0281, -9.2922



### Opening Times

Jan & Feb 10:00–16:00h  
Mar 10:00–17:00h  
Apr to Aug 09:00–18:00h  
Sept to Dec 10:00–17:00h



### Admission Rates

Video & tasting free. Pre-booked full presentation & more available. Rates for "Taste the Atlantic" see website



### Information

Gourmet Food Store and Craft Shop  
Gastro-pub & Microbrewery in the  
Roadside Tavern next door



### Parking

Free car and coach parking at the  
Visitor Centre



# Doolin Cave

Doolin, Co. Clare



## Journey to the Great Stalactite

Follow the footsteps of the men who discovered the Great Stalactite in 1952. Guides will lead you on a 45–50 min tour

through the Burren underground where you will see the many wonders of this karst landscape preserved in the natural cave. A seabed, fossils, and **one of the longest Stalactites in the World accessible to the public, await you in the chambers and passageways.**

After your tour—take a stroll on the farmland nature trail, relax in the visitor centre, enjoy tea or coffee and home baked goods at the café and/or browse in the gift shop, which houses Doolin Cave Pottery.

The award-winning Doolin Cave is conveniently located along the Wild Atlantic Way in the heart of the Burren. Only 7 miles/12km from the Cliffs of Moher!



## Visiting



### Contact

Doolin Cave  
Doolin, Co. Clare, V95 R299  
Tel: 065-707 5761  
tours@doolincave.ie  
www.doolincave.ie



### Location

On the western edge of The Burren, an extensive karst area of North West Clare. Located 7 miles/12km from the Cliffs of Moher



### SatNav: Latitude/Longitude

53.0419, -9.3450



### Opening Times

Open daily year round 10:00–17:00h  
Closed Dec 22–26  
See website for further details



### Admission Rates

Adult €15, Child €8  
Family €45/€50  
10% Discount on Prices Above  
when you show this guide



### Information

Café and craft shop



### Parking

Ample parking available



# Doolin2Aran Ferries



Doolin, Co. Clare



## Garrihys, the Original Cruise Company

Boat Trips from Doolin to the Aran Islands, daily departures at various times throughout the day. Visit the spectacular Dún Aengus Fort on Inis Mór, get away from it all on Inis Meáin or take a quick trip to the smallest one—the beautiful island of Inis Oírr. You can visit an island and the Cliffs of Moher in the same day.

### Take a cruise to the Cliffs of Moher

Look up at the majestic beauty of the Cliffs of Moher from below and see the Harry Potter cave and everyone's favourite birds, the Puffins in action on the 1 hour voyage of discovery.



### The Fleet

Garrihy's Doolin2Aran Ferries have the largest, fastest and most comfortable fleet of ships sailing from Doolin.

Come sail on the two newest ships on Ireland's Wild Atlantic Way—the "Star of Doolin" and the "Spirit of Doolin".

Inis Mór is now only 35 minutes from Doolin by boat!

## Visiting



### Contact

Doolin2Aran Ferries  
Doolin Pier, Doolin  
Co. Clare, V95 HE3F  
Tel: 065-707 5949  
info@doolin2aranferries.com  
www.doolin2aranferries.com  
www.doolin2aranferries.com



### Location

Doolin Pier  
From Galway: N18 to Kilcolgan, turn right onto N67 for Lisdoonvarna From Limerick, Ennis or Killimer Car Ferry: follow signs to Lahinch/Cliffs of Moher



### SatNav: Latitude/Longitude

Doolin Pier 53.0156, -9.4051



### Sailing Times

Sailings operate 7 days per week, Mar to Nov 01  
Office open from 08:00–21:00h

**Typical Sailings:** Aran Islands: 10:00h Cruises: 12:00 and 15:00h  
Sailings are weather permitting and subject to change. Please phone for up to date times



### Information

Tea/Coffee/Snacks available at the pier



### Parking

Paid Parking available at pier



# Doolin Ferry Co—Bill O'Brien's

The Original Doolin Ferry

Doolin, Co. Clare



## Visit all 3 Aran Islands & the Cliffs of Moher



Operating since 1970 and celebrating 50 years in business in 2020.

To celebrate this milestone a second express ferry has been launched into the fleet, the **Aran Islands Express** to complement the existing **Doolin Express**. There can be

no confusion, when you travel upon an express ferry with Doolin Ferry Co, you're travelling on the fastest and most comfortable ferries from Doolin.

Set sail to a place lost in time and visit the Aran

Islands or book one of the **Cliffs of Moher Cruises** which depart every hour.

Enjoy the Crew's expert knowledge with on board commentary.

Fáilte ar bord—Welcome aboard with the **Doolin Ferry Co**. #doolinferryco

## Visiting



### Contact

Doolin Ferry Co—Bill O'Brien's  
No.1 Doolin Pier Doolin  
Co. Clare, V95 DR74  
Liam: 065-707 5555 / 087-958 1465  
info@doolinferry.com  
www.doolinferry.com



### Location

From Galway: N18 to Kilcolgan, turn right onto N67 follow to Ballyvaughan-Lisdoonvarna-Doolin From Limerick/Shannon/Ennis: follow signs to Cliffs of Moher via Ennistymon-Lisdoonvarna-Doolin Follow **Doolin Pier** signs to the water



### SatNav: Latitude/Longitude

53.0148, -9.4044



### Sailing Times

**Aran Islands:** Depart No.1 Doolin Pier, hourly from 10:00–13:00h; 14:30h and one way only at 17:30h  
**Cliffs of Moher Cruise:** Depart No.1 Doolin Pier, hourly 12:00–16:00h and at 17:15h. **Office Opening Times:** 08:00–18:00h daily, Mar–Nov  
Save 30% on your booking by booking ahead online. Use discount code AV10 for additional 10% saving!



### Information

Download Aran Island maps to your phone from link: www.doolinferry.com/aranislandmaps



### Parking

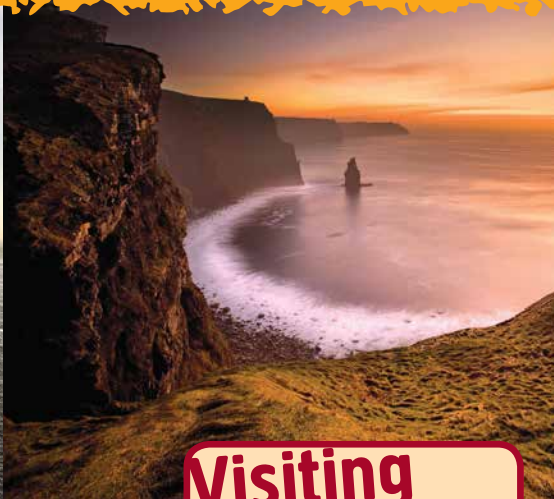
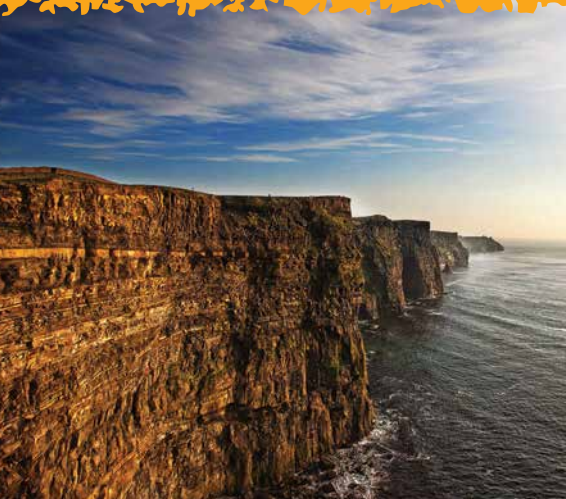
Pay and display parking on quayside





# Cliffs of Moher Visitor Experience

Liscannor, Co. Clare



## A world class visitor experience

Burren & Cliffs of Moher UNESCO Global Geopark

The Cliffs of Moher are a Signature Discovery Point on the Wild Atlantic Way. Looming over Clare's west coast, the magnificent Cliffs of Moher stretch for 8 kilometres and rise to 214 metres over the Atlantic Ocean. The Cliffs of Moher are home to Ireland's largest mainland seabird colony with up to 30,000 breeding pairs.

There are over 600 metres of pathways and viewing platforms along the cliff edge, which allow the visitor to enjoy a spectacular and healthy cliff walk. The amazing views of the Cliffs, the famous Aran Islands, Kerry Mountains, Galway Bay, O'Brien's Tower and the thousands of seabirds make the Cliffs a magical place. If you are lucky, you will hear and see the Cliffs Buskers playing traditional music along the Cliff pathways. Talking telescopes are dotted along the paths.

### Eco-friendly Visitor Centre

The Visitor Centre opened in 2007 and is set into the hillside offering an all-weather experience. The Centre is a unique structure which minimises the visual imprint on its setting and makes significant use of eco-friendly features such as geothermal heating, extensive recycling and state of the art waste management.

### What is included in Admission?

The admission ticket covers all on site attractions including the following: access to the visitor centre with its array of cafes and gift shop, family friendly safe pathways and viewing areas with full wheelchair and buggy accessibility, O'Brien's Tower with its panoramic views and free tours, access to the interactive Cliffs exhibition, free wi-fi, craftworkers street with its variety of bespoke shops, mobility vehicle, water refill stations and free parking.

## Wild Atlantic Way Discovery Point

Visitor information leaflet and sitemap available in 14 languages.

Save time and money by booking online at [www.cliffsofmoher.ie](http://www.cliffsofmoher.ie)

**TOP TIP:** Stay the night in County Clare and visit in early morning to avail of reduced rates (available online only), and enjoy a much quieter, peaceful experience.



## Visiting



### Contact

Cliffs of Moher Visitor Experience  
Cliffs of Moher, Co. Clare, V95 KN9T  
Tel: 065-708 6141  
info@cliffsofmoher.ie  
www.cliffsofmoher.ie



### Location

R478 10km North of Lahinch  
(10 mins drive)  
R478 8km South of Doolin  
(8 mins drive)  
N85 (R478) 45km North of Ennis  
(40 mins drive)



### SatNav: Latitude/Longitude

52.9714, -9.4235



### Opening Times

Nov, Dec, Jan & Feb: 09:00–17:00h  
Mar, Apr, Sept & Oct: 08:00–19:00h  
May, Jun, Jul & Aug: 08:00–21:00h  
Closed Dec 24, 25 & 26



### Admission Rates

Save time and money by booking online at

[www.cliffsofmoher.ie](http://www.cliffsofmoher.ie)

Reduced rates available online only for off peak visits

(08:00–10:59h & 16:00h–close)

Early bird and sunset visitors will be rewarded with a much quieter peaceful experience



### Information

Cliffs View Café, Puffins Nest Café, Gift & Souvenir Shop, Craft Shops in outdoor Market Street, safe paths and walkways, O'Brien's Tower



### Parking

Onsite parking, disabled parking, mobility vehicle, local shuttle



United Nations  
Educational, Scientific and  
Cultural Organization



Burren and  
Cliffs of Moher  
UNESCO Global Geopark



# The Rock Shop

Gift Shop & Tearoom

Liscannor, Co. Clare



## Fossils, Gems, Minerals and Jewellery

At The Rock Shop view an exciting range of gemstones and gifts sourced from Ireland and around the world. Jewels and jewellery to suit all tastes and budgets, and of course Rocks, Fossils and Mineral Specimens for collectors young and old.

With displays of precious and semi-precious stones, onyx, Connemara Marble and a huge selection of healing crystals, you are sure to find something beautiful and unique.

There is a presentation room with a FREE audio visual presentation outlining the history of quarrying the famous

Liscannor flagstones from the nearby Cliffs of Moher.

The Tearoom is open All Year Round. Enjoy delicious home baked scones and cakes, soups and much more while relaxing with beautiful views over Liscannor Bay. Shop online at [www.therockshop.ie](http://www.therockshop.ie)



## Visiting



### Contact

The Rock Shop  
Liscannor  
Co. Clare, V95 AH63  
Tel: 065-708 1930  
[info@therockshop.ie](mailto:info@therockshop.ie)  
[www.therockshop.ie](http://www.therockshop.ie)



### Location

On the Wild Atlantic Way just 2km outside Liscannor Village



### SatNav: Latitude/Longitude

52.9437, -9.4235



### Opening Times

Open Daily from 10:00h



### Information

On-site Tearoom serving Soup of the Day, followed by a coffee and selection of homemade cakes  
WiFi available on-site



### Parking

Coach and car parking on-site



# Moher Hill Open Farm

Liscannor, Co. Clare



## With lots to see and do



Beautifully situated overlooking Liscannor Bay, this **Award Winning** (Environmental Award) farm is close to Ennistymon, Lahinch, Liscannor and Doolin.

Visitors to the farm can interact with a variety of endearing animals, those typical to Irish farms, and some from more exotic locations including emu, ostrich, llama and a family of Vietnamese pot bellied pigs.

Miniature donkeys and falabella ponies are a great favourite. Meet the new arrival, Andy the Alpaca.

There are a number of purpose built indoor facilities including go-karting, bouncing castle, ball pool and indoor sandpit. Outdoor facilities include animal paddocks, go-karts, mini golf, a fully equipped children's play area and picnic area where you can bring your own or purchase from the tuck shop and newly built coffee shop. Antique farmyard machinery also on display. Visit the new outdoor play area.

2013, 2014 and 2015 winner of the FBD Clare Business Excellence award for Best Tourism Hospitality in Clare.

## Visiting



### Contact

Moher Hill Open Farm  
Cliffs of Moher Road  
Liscannor, Co. Clare, V95 XK00  
Tel: 065-708 1071 / 708 6867  
[moherfarm@eircom.net](mailto:moherfarm@eircom.net)  
[www.moherfarm.com](http://www.moherfarm.com)



### Location

4 km from Liscannor on the R478



### SatNav: Latitude/Longitude

52.9572, -9.4183



### Opening Times

Apr & Oct W/ends only 11:00-18:00h  
Open daily  
May & Sept 11:00-18:00h  
Jun to Aug 10:00-18:00h  
Sun 12:00-18:00h  
Open Easter, Easter Holidays, Halloween and Santa Village in Dec



### Information

Picnic area. Tuck shop. Coffee shop



### Parking

Free on-site parking for cars and coaches





# Dolphinwatch

Carrigaholt, Co. Clare



## Meet Ireland's Resident Dolphins!

Dolphinwatch will take you on an unforgettable wildlife adventure at the Mouth of the River Shannon, home to Europe's largest group of bottlenose dolphins.

The dolphins in this Special Area of Conservation are usually seen in family groups. Young dolphins are especially playful, often swimming or bow riding with the boat.

On a trip with Dolphinwatch you will encounter a variety of wildlife, learn about nesting seabirds, fascinating coastal geology and maritime history at the mouth of Ireland's longest river.



This family business has a genuine, responsible approach to sharing this unique marine habitat with a live commentary and marine scientists as crew.

Dolphinwatch has Gold Awards in Eco and Sustainable Tourism.

## Visiting



**Contact**  
Dolphinwatch  
Carrigaholt, Co. Clare, V15 NH34  
Tel: 065-905 8156  
info@dolphinwatch.ie  
www.dolphinwatch.ie



**Location**  
On the Wild Atlantic Way  
Take R487 to R488 to Carrigaholt Village. Turn left down Quay Road to the Pier at Carrigaholt Castle



**SatNav: Latitude/Longitude**  
52.6040, -9.7108



**Sailing Times**  
Current sailing times posted on the website. Booking on-line or phone for reservation. Booking advisable  
Trip duration: 2-3hrs. approx



**Information**  
Café and toilet facilities on board  
Nearest public toilet facility in Kilkee



**Parking**  
Free parking at Castle Pier car park



# Loop Head Lighthouse

Kilbaha, Co. Clare



## A Great Lighthouse of Ireland

The enchanting Loop Head Lighthouse is located at the tip of the Loop Head Peninsula at the furthest point west on the Clare coastline and is a discovery point along the spectacular Wild Atlantic Way. The wild and rugged Atlantic coastline, contrasting sharply with the sheltered Shannon Estuary truly sets a breathtaking backdrop to the Lighthouse.

Visitors have the opportunity to be guided to the top of the Lighthouse and take in the magnificent views.

An exhibition focusing on the history of Irish Lighthouses and the people who have operated them since the 17th century is located in one of



the Light Keeper's Cottages. Other highlights in the locality include the Bridges of Ross, an important habitat for cliff nesting birds.

Visit [LoopHeadLighthouse.ie](http://LoopHeadLighthouse.ie) to plan your visit

## Visiting



**Contact**  
Clare County Council  
Ennis, Co. Clare, V95 DXP2  
Tel: 065-684 6283  
tourism@clarecoco.ie  
www.loopheadlighthouse.ie  
www.clare.ie  
www.greatlighthouses.com



**Location**  
25km from Kilkee on the R487  
Lighthouse Eircode V15 T292



**SatNav: Latitude/Longitude**  
52.5630, -9.9205



**Opening Times**  
Open April 10 to late September 2020 (see website)



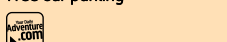
**Admission Rates**  
Please visit website  
www.loopheadlighthouse.ie



**Information**  
Limited refreshments available on-site



**Parking**  
Free car parking



# Clare Playgrounds

## County Clare

### It's playtime!



While visiting County Clare be sure to look out for the many playground facilities around the county. All designed to provide universally accessible, imaginative and interactive play areas for children aged 0-12 in safe and friendly environments.

**North Clare:** Corofin, Crusheen, Doolin, Kilmaley, Lahinch, Lisdoonvarna and Miltown Malbay.

**South Clare:** Cratloe, Newmarket on Fergus, O'Briensbridge, Quin and Sixmilebridge.

**East Clare:** Feakle, Kilkishen, Killaloe, Mountshannon, Scariff and Tulla.

**West Clare:** Ballynacally, Cappa Kilrush, Cooraclare, Kilbaha, Kildysart, Kilkee, Kilrush, Labasheeda and Lissycasey.

**Ennis & Shannon:** Tir na Nog in Shannon. Tim Smythe Park and Lees Road in Ennis. And Clarecastle just south of Ennis.

For more information, visit [www.clare.ie](http://www.clare.ie)

## Visiting



### SatNav: Latitude/Longitude

Ballynacally 52.4352, -9.4438  
Cappa, Kilrush 52.3746, -9.3010  
Clarecastle 52.4852, -8.5752  
Cooraclare 52.4212, -9.2540  
Corofin 52.5642, -9.4549  
Cratloe 52.4234, -8.1856  
Crusheen 52.5623, -8.5345  
Doolin 53.1894, -9.2217  
Feakle 52.5530, -8.3859  
Kilbaha 52.3411, -9.5146  
Kildysart 52.4023, -9.6207  
Kilkee 52.4041, -9.3846  
Kilkishen 52.4817, -8.4431  
Killaloe 52.4829, -8.2659  
Kilmaley 52.4921, -9.6223  
Labasheeda 52.3956, -9.1442  
Lahinch 52.5637, -9.2052  
Lees Road, Ennis 52.51437, -9.0143  
Lisdoonvarna 53.1380, -9.1733  
Lissycasey 52.4420, -9.1023  
Miltown Malbay 52.5115, -9.2354  
Mountshannon 52.5552, -8.2551  
Newmarket on Fergus 52.4538, -8.5332  
O'Briensbridge 52.4580, -8.3050  
Quin 52.4852, -8.5141  
Scariff 52.5438, -8.3215  
Sixmilebridge 52.4425, -8.4647  
Tim Smythe Park, Ennis Toddler 52.5118, -8.5847  
Teen 52.5056, -8.5841  
Tir na Nog, Shannon 52.4220, -8.5240  
Tulla 52.5149, -8.4511

# Miltown Malbay

## Miltown Malbay, Co. Clare



### Home of Traditional Music



Miltown Malbay is surrounded by beautiful sandy blue flag beaches and the rugged countryside of West Clare and is equidistant from Trump International Golf Links Doonbeg and the famous Lahinch Golf Courses with a nine hole links course just out the road. Excellent surfing beaches with great walks along the Cliffs to the Atlantic Roar.

Beaches are suitable for families with lifeguards in attendance.

Miltown Malbay has, for many years, been synonymous with traditional music. This history ensures great music sessions all year round. Keep your ear to the door of the many pubs in town as music and dancing can start at the drop of a hat.

July has been marked annually by the Scoil Samhradh Willie Clancy Summer School, and is the largest summer school in the world. This Market town has an excellent choice of local shops, bars & restaurants to cater for all tourists needs.

## Visiting



### Contact

Miltown Malbay  
Co. Clare  
[www.clare.ie](http://www.clare.ie)



### Location

Eircode V95 DKW5: 32km west of Ennis. An ideal base for touring, the Burren, Cliffs of Moher, and Loop Head



### SatNav: Latitude/Longitude

52.8558, -9.4000



### Information

Miltown Malbay has enjoyed a long history of playing host to visitors from holiday makers to music students to followers of traditional Irish music. An ideal location to relax and enjoy local beaches and discover traditional music, song and dance at its best. Containing an excellent choice of Bars and a host of music venues with traditional music nightly

Host to an array of good food establishments encompassing country house cooking to four star restaurants ranging from Local B&B's to Three and Four Star Hotels



### Parking

Free parking available on the street and a large Town Car Park





# Scattery Island Centre

Scattery Island, Co. Clare



## Where the mighty Shannon meets the Wild Atlantic

Enjoy the unspoilt beauty of Scattery Island, home to a monastic settlement founded in the early 6th century. There are the ruins of six churches and one of the highest Round Towers in Ireland, with the unusual feature of its door at ground level. Scattery has suffered at the hands of many invaders including the Vikings during the early 9th century but Brian Boru later recaptured the island.

The main church on the island is Teampall Naomh Mhuire. There is

an effigy of a bishop's head on the outside of the east window of the Cathedral believed to be that of St. Senan. An exhibition of the history of the island is housed in the visitor reception building, which is situated near the pier.



## Visiting



**Contact**  
OPW Visitor Centre  
Scattery Island, Co. Clare, V15 AD62  
Tel: 087-995 8427  
scatteryisland@opw.ie  
www.heritageireland.ie



**Location**  
Located approximately one mile off Kilrush. 2.5km boat trip from Kilrush Marina



**SatNav: Latitude/Longitude**  
52.6350, -9.4948



**Opening Times**  
May 21 to Sept 23  
Daily 10:00-18:00h (recommended visiting times). Last admission 45 mins before closing



**Admission Rates**  
Free of Charge (There is a separate charge for ferries to Scattery Island)



**Information**  
Ferry Service to Island  
Tel: 085-250 5514  
info@scatteryislandtours.com  
Ferry Schedule visit—  
www.scatteryislandtours.com



**Parking**  
Ample parking available at Kilrush Marina



# Vandeleur Walled Garden & Woodland Bistro

Kilrush, Co. Clare



## Explore, walk, discover and feel inspired



The Vandeleur Walled Garden, Kilrush—a place of history, beauty, tranquility and energy... and a place that is excited to share its special secret with you. Once the private garden of Kilrush House, this sheltered paradise of 2.158 acres is set among 420 acres of native woodland. Many unusual and tender plants thrive in the area's uniquely western latitude microclimate and the result is

a horticultural medley of trees, flowers, plants and water features. The garden has been beautifully and imaginatively restored around the old path system. Whether you're a keen gardener, a visitor to these shores, a lover of natural beauty or simply looking for an outing with a difference—Vandeleur gives you a fascinating glimpse into the past, blended with a beautiful re-designed look for a new generation of garden lovers. If you visit with your family there is something for everyone. Children can enjoy the living willow structure and life-size Maze or follow the butterfly trail. Visit the Woodland Bistro for homemade food and the Gift Shop for that special gift.

## Visiting



**Contact**  
Vandeleur Walled Garden & Woodland Bistro  
Killimer Road, Kilrush  
Co. Clare, V15 E735  
Tel: 065-905 1760  
info@vandeleurwalledgarden.ie  
www.vandeleurwalledgarden.ie



**Location**  
43km from Ennis on the N68. Just outside Kilrush on the N67 Killimer Road, 8km to the Shannon Ferry (Killimer-Tarbert)



**SatNav: Latitude/Longitude**  
52.6314, -9.4765



**Opening Times**  
7 days per week 10:00-17:00h



**Admission Rates**  
Free entry



**Information**  
Woodland Bistro, Plants for Sale, Gift Shop, Woodland Trails, Child friendly, Educational, Green Flag Award-Winner



**Parking**  
Ample free parking available





# Dolphin Discovery

Kilrush Marina, Co. Clare



## Discover the Shannon Dolphins—from Kilrush



The Shannon estuary is one of the few places in Europe that is home to a resident group of bottlenose dolphins. With over 140 dolphins here in the estuary, the record of sighting dolphins is very high.

Trips depart daily from Kilrush marina onboard passenger vessel Dolphin Discovery

where you'll encounter these magnificent creatures in their natural habitat while enjoying the breathtaking views of the Shannon estuary.

Experience the excitement of seeing dolphins leap clear out of

the water or swim along with the boat, where you are sure to get some amazing shots of them.

Friendly and helpful crew are onboard to make sure you have an enjoyable trip.

An excursion not to be missed on your visit to Clare!

## Visiting



### Contact

Dolphin Discovery  
Kilrush Marina, Kilrush  
Co. Clare, V15 AD62  
Tel: 065-905 1327  
info@discoverdolphins.ie  
www.discoverdolphins.ie



### Location

Kilrush, 43 km from Ennis on the N68, 56 km from the Cliffs of Moher on the N67 and just 8 km from the Shannon Car Ferry at Killimer



### SatNav: Latitude/Longitude

52.6355, -9.4963



### Sailing Times

Sailings operate May to Sept  
Trip duration 2–2½ hours  
Daily Timetable posted on  
www.discoverdolphins.ie  
Phone for reservations



### Information

Tea, coffee and snacks available at the marina to take onboard  
Toilet facilities onboard



### Parking

Extensive parking at Kilrush Marina for coaches and cars



# West Coast Aqua Park

Kilrush, Co. Clare

Ireland's newest and most exciting aqua park. An epic adventure for all the family to enjoy. Slide, climb and bounce your way around an inflatable obstacle course on the water! All equipment including wetsuits and buoyancy aids are included but please bring your own swimwear and towels. Onsite facilities include showers, change rooms and café.



### Contact

West Coast Aqua Park  
Creek Lodge, The Marina, Kilrush  
Co. Clare, V15 PN27  
Tel: 087-954 3000  
info@westcoastaquapark.ie  
www.westcoastaquapark.ie



### SatNav: Latitude/Longitude

52.6357, -9.4895



### Opening Times

Open W/ends May & Jun. Open Daily  
Jul & Aug. Please arrive 45 mins before  
your scheduled start time  
See website for other opening times



### Admission Rates

Adult €22, Child (6–17years) €18  
Minimum age 6 years old  
Family (2+2) €69, (2+3) €79



### Parking

Limited parking near reception. Plenty of free parking nearby

## Kilrush

Kilrush is at the centre of a rich and diverse coastal landscape on the West Clare Peninsula. Set in the stunning seascape of the River Shannon, the islands of Hogg and Scatterry and the picturesque village of Cappa, this is the perfect place to start exploring the west coast of Ireland. [www.clare.ie](http://www.clare.ie)







# Clare Museum

The Riches of Clare

Ennis, Co. Clare

8,000 years of history excitingly captured



Clare is a remarkable county and the story of its people stretches back over 8,000 years. Its incredible history is excitingly captured at the Riches of Clare exhibition at the Clare Museum. Located in the beautifully restored former Convent of

Mercy building, the exhibits are uniquely displayed, using the themes of earth, power, faith and water.

Over 400 artefacts of Clare origin on loan from the National Museum of Ireland, can be seen. These beautifully displayed artefacts, together with other collections gathered locally, original works of art, enthralling

audio-visual and interactive experiences, and dramatic images, all combine to provide an exciting glimpse into the rich history and heritage of the county.

## Visiting



**Contact**  
Clare Museum  
Arthur's Row, Ennis  
Co. Clare, V95 EC92  
Tel: 065-682 3382  
claremuseum@clarecoco.ie  
www.clarelibrary.ie



**Location**  
Situating in Ennis Town Centre  
off O'Connell Square



**SatNav: Latitude/Longitude**  
52.8441, -8.9818



**Opening Times**  
Oct to May, Tues to Sat  
09:30-13:00h £ 14:00-17:30h  
—last admissions at 12:30 £ 17:00h  
Jun to Sept, Mon to Sat  
09:30-13:00h £ 14:00-17:30h  
—last admissions at 12:30 £ 17:00h  
Closed Bank Holidays £ Sundays



**Admission Rates**  
FREE. NB. Large groups should book in advance



**Information**  
Tourist information office in the building



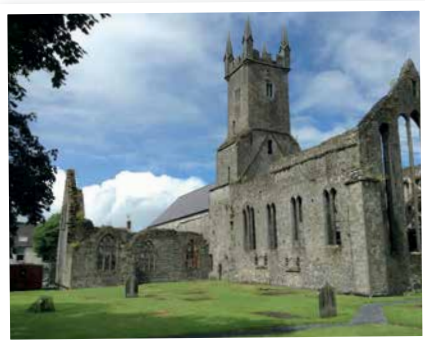
**Parking**  
Public car parking nearby, access from Clonroad and in Friary off Francis Street. Free coach parking at adjacent Ennis Coach Park.



# Ennis Friary

Ennis, Co. Clare

Visit the town's oldest building



This 13th century Franciscan friary, founded by the O'Briens, of Thomond who once ruled much of North Munster, has numerous 15th/16th century sculptures carved in the local hard limestone.

A carved image of St. Francis carrying a cross, wearing the Franciscan habit and displaying the stigmata is evident in the nave. Under the south arch of the tower, an elaborate tracery canopy of the late 15th century was perhaps part of an ornate tomb.

A visitor to Ennis Friary can also see the sacristy, an impressive structure with ribbed, barrel-vaulted ceiling. The friary is also the burial place of the O'Brien and McMahon families—the ancient Kings of Clare.

## Visiting



**Contact**  
Ennis Friary  
Abbey Street, Ennis  
Co. Clare, V95 AN28  
Tel: 065-682 9100  
ennisfriary@opw.ie  
www.heritageireland.ie



**Location**  
Situating in the town centre of Ennis



**SatNav: Latitude/Longitude**  
52.8459, -8.9814



**Opening Times**  
April 02 to Nov 04  
Daily 10:00-18:00h



**Admission Rates**  
Adult €5  
Senior/Group €4  
Child/Student €3  
Family €13



**Information**  
Guided tours available on request  
Leaflet/Guide book: English, Irish, French, German, Italian £ Spanish



**Parking**  
Public car £ coach park close to site



ATLANTIC EDGE

# LIMERICK

EUROPEAN EMBRACE



From the white-water rush of the Shannon to riding bikes and ponies through the emerald peace of Limerick countryside, from dazzling fireworks over King John's Castle to the delicious buzz of the Milk Market, Limerick really does cater for every mood.



Follow us

  @limerick.ie  @limerick\_ie

Limerick.ie

#LimerickEdgeEmbrace



# Saint Mary's Cathedral

Bridge Street, Limerick City



## Visit the oldest and most historic building in Limerick

Saint Mary's Cathedral—the oldest building in Limerick was founded in 1168 A.D. on the site of a palace donated by Donal Mor O'Brien, King of Munster. The cathedral is open daily and is still used today for its original purpose, as a place of worship and prayer. The cathedral offers a rich experience of treasures and Light of Life signs will guide you round and offer information about what you see.

The most prominent feature is the West Door, which tradition has it was the main entrance to the palace—the centre of government in the early medieval Viking city. See the Misericords—carved oak seats depicting monsters and other

creatures (symbols of good and evil). See the original altar—a large limestone slab 4m/13feet long dating from before the Reformation. Cromwellian soldiers used horses to remove the altar during their siege of the city in 1651. Although Cromwell's troops removed it, it was reinstated in the 1960s.

The Cathedral has an impressive 6 chapels—the Chapel of Saint James & Mary Magdalen; the Lady Chapel; the Chapel of the Holy Spirit; the Jebb Chapel; the O'Brien Chapel; and the Glentworth Chapel. No trip to the city is complete without visiting this historic building on the King's Island, overlooking the River Shannon.

## Concerts and Recitals

Saint Mary's Cathedral has been ever-present during invasions, sieges, wars, famines and times of peace and has hosted some amazing events from Concerts and Recitals to Son et lumière sound-and-light events. This wonderful venue is available for hire.

Check the website for further details. Many events are free, while others can be booked online: [www.SaintMarysCathedral.ie](http://www.SaintMarysCathedral.ie)

## Visiting



### Contact

Saint Mary's Cathedral  
Bridge Street  
Limerick City, V94 E068  
Tel: 061-310 293  
[info@saintmaryscathedral.ie](mailto:info@saintmaryscathedral.ie)  
[www.SaintMarysCathedral.ie](http://www.SaintMarysCathedral.ie)



### Location

Limerick city centre



**SatNav: Latitude/Longitude**  
52.6686, -8.6233



### Opening Times

Open Daily  
Mon to Fri 09:00–17:00h  
Sat 09:00–16:00h  
Sun 12:30–16:00h  
Last admission 30 mins before closing



### Admission Rates

Adult €5, Student €3.50  
Child (0–10yrs) Free



### Information

Morning prayer 09:00h Mon, Wed, Fri & Sat. Eucharist (Holy Communion) 10:30h Tues & Thurs  
Sunday worship 11:15h  
Guide booklets available in English, French, German, Italian, Spanish & Dutch



### Parking

On-site & some street parking  
Public car parks near by





# King's Island

## King's Island Medieval Quarter, Limerick City

### Experience Medieval Limerick

The King's Island Medieval Quarter of Limerick City contains a wealth of built heritage. Nicholas Street, the city's old main street links most of the sights—Bishop's Palace, now home to Limerick Civic Trust and open to the public; and some of the remains of the Walls of Limerick.

The 13th century King John's Castle sits proudly on the bank of the Shannon and across the river is the famous Treaty Stone upon which folklore says the 1691 Treaty was signed. Limerick is often referred to as the Treaty City.

Also on Nicholas Street are the old Alms Houses and the remains of the City Exchange, which used to be the central

hub of commercial activity in Limerick, and now forms one of the boundary walls of Saint Mary's Cathedral.

Walking tours of both King's Island and other historic elements of the city are available. Enquire at the Tourist Office.



## Visiting



### Contact

Limerick City Tourist Office  
20 O'Connell Street  
Limerick City, V94 H9Y2  
Tel: 061-317 522  
[www.limerick.ie](http://www.limerick.ie)



### Location

Limerick City Centre. 5 mins. walk from Tourist Information Office



### SatNav: Latitude/Longitude

52.6676, -8.6243



### Opening Times

Cathedral, Museum and walking tours all operate various opening times. Enquire at the Tourist Office or from each attraction directly



### Information

King's Island has a number of bars, restaurants, and shops to choose from



### Parking

Multi-storey car park on King's Island (Barringtons Car Park). Other nearby car parks include Grove Island and Charlotte's Quay Multi-Storey car parks



# The Hunt Museum

## The Custom House, Limerick City

### A cabinet of curiosities



Housed in the 18th century Georgian Palladian Custom House in Limerick City. The permanent collection, has artefacts from all over the world. It is the legacy of the Hunt family, and features Irish archaeology, medieval artefacts, Greek and Roman antiques, fine art, fashion, ceramics, and Viking jewellery on three floors of the museum. **Free tours and activities for kids and adults.**

The fine Captains' room houses some famous paintings with works from Picasso, Gauguin, Renoir, Henry Moore, Roderic O'Connor, Jack B. Yeats and Paul Henry.

Throughout the year the Gallery exhibits a diverse range of temporary exhibitions from fashion designers, ceramicists, printmakers and artists. This year the two blockbusters are: **Best costume goes to...**, Feb to Apr 2020 AND **Belonging**—European contemporary art including works by Sean Scully, Anish Kapoor and Marlene Dumas, Apr to Aug 2020.

Check social media @HuntMuseum or see website [huntmuseum.com](http://huntmuseum.com)

## Visiting



### Contact

The Hunt Museum  
Custom House, Rutland Street  
Limerick City, V94 EV8A  
Tel: 061-312 833  
[info@huntmuseum.com](mailto:info@huntmuseum.com)  
[www.huntmuseum.com](http://www.huntmuseum.com)



### Location

Custom House Quay, Limerick City Centre



### SatNav: Latitude/Longitude

52.6664, -8.6240



### Opening Times

Open year-round. Mon to Sat 10:00–17:00h; Sun 14:00–17:00h  
Thurs (May to Sept) 20:00h  
Closed Good Friday, Dec 25, Dec 26 and Jan 01



### Admission Rates

Adult €7.50, Student/Child €5.50  
Family €22. (€2.50 discount off general admission if you show a copy of this guide) Annual membership €50pp. Admission Free every Sun and 2 for 1 every Mon



### Information

Riverside Café and Gift Shop open to the public. Free WiFi



### Parking

Multi-storey and other car parks nearby plus coach parking



# The People's Museum of Limerick

Pery Square, Limerick City

Get up close and personal with Limerick's past



The People's Museum of Limerick is a new museum at No.2 Pery Square, which aims to reflect the diverse lives of the people, buildings, and streets of the city. It showcases an eclectic and fascinating collection of

items in the care of Limerick Civic Trust, as well as artefacts that are on loan from elsewhere. A rotating series of exhibitions means that there is always something new to see. The museum is housed in a fully-restored splendid late Georgian townhouse, which formed part of a tontine scheme in the early nineteenth century. The walls here can talk!

The walls here can talk!

## Visiting



### Contact

The People's Museum of Limerick  
2 Pery Square  
Limerick, V94 HF53  
Tel: 087-109 5906  
peoplesmuseum@limerickcivictrust.ie  
www.peoplesmuseum.ie



### Location

Limerick City Centre



### SatNav: Latitude/Longitude

52.6584, -8.6299



### Opening Times

Open 7 days a week  
Mon to Wed 10:00–16:00h  
Thurs 10:00–21:00  
Sat 10:00–17:00h  
Sun 13:00–17:00h



### Admission Rates

Adult €5, Senior/Student €3  
Child (7–18 yrs) €2, Child (U7) Free



### Information

Visit website for updates of regular events



### Parking

On street parking is available outside the museum's front door. Nearest parking facility is the railway station



# Limerick City Gallery of Art

Pery Square, Limerick City

See the best of contemporary art



Limerick City Gallery of Art is one of the leading contemporary art galleries in Ireland and home to an important collection of Irish 18th–21st century art in all media. LCGA also holds the National Collection of Contemporary Drawing and the Michael O'Connor International Poster Collection. Artists included in the collections are

Seán Keating, Jack B. Yeats, Paul Henry, Grace Henry, Sir William Orpen, John Shinnors, George Barrett, and many more. Exhibitions from the Permanent Collection are exhibited along with the contemporary exhibitions. LCGA hosts

EVA INTERNATIONAL Ireland Biennial, and hosts various events, talks & workshops throughout the year. The gallery is housed in the Carnegie Building which is a two storey building with 650 square meters of exhibition space between the two floors & a café which looks onto the People's Park at the rear of the gallery.

## Visiting



### Contact

Limerick City Gallery of Art  
Carnegie Building, Pery Square  
Limerick City, V94 E67F  
Tel: 061-310 633  
artgallery@limerick.ie  
www.gallery.limerick.ie



### Location

Located in Limerick city centre overlooking Pery Square



### SatNav: Latitude/Longitude

52.6590, -8.6285



### Opening Times

Open 7 days a week  
Mon, Tues, Wed, Fri, Sat  
10:00–17:00h  
Thurs 10:00–19:30h  
Sun 12:00–17:00h  
Closed on Bank & Public Hols



### Admission Rates

The gallery is a free public amenity



### Information

Café on-site



### Parking

Public on street parking



# Milk Market Limerick

Cornmarket Row, Limerick City

## Famous All-Weather Food and Variety Markets

The Milk Market is one of Ireland's oldest and most famous markets. Located on this exact courtyard in the heart of Limerick City since the 1830s, it was officially established in 1852.

On **Saturday the famous Food Market** is filled with over 80 traders. Here you'll discover farm fresh fruit & veg, great cheeses & chutneys, just-caught fish, artisan meats, organics, delicious healthy breads, raw milk, fresh pressed juices and Honey.

On **Sunday** the venue is open as a family-orientated courtyard with a fantastic brunch offering in addition to boutique and vintage clothes shops, flowers and regular free

Art/Record Fairs and Family Fun events.

On **Friday** the venue is open with a number of cafes, artisan shops and independent units offering fresh and natural food produce, street food, rustic coffee shops and flowers with live music lunch sessions and more.

Most events are free apart from occasional ticketed night time concerts or Charity/Speciality events.



## Visiting



**Contact**  
Limerick Milk Market  
Cornmarket Row  
Limerick City, V94 V9W7  
Tel: 061-214 782  
[www.MilkMarketLimerick.ie](http://www.MilkMarketLimerick.ie)



**Location**  
Located in the city centre on Cornmarket Row, near Cruises Street It is clearly marked on the Glance Visitor GuideMap to the city



**SatNav: Latitude/Longitude**  
52.6637, -8.6219



**Opening Times**  
**Friday Café Experience:**  
10:00–15:00h  
**Famous Saturday Market:**  
08:00–15:00h  
**Sunday Brunch:** 11:00–15:00h  
Opening times for shops in the Market Square buildings vary, many operate normal hours Mon to Sun. See their Facebook page or website for latest information



**Information**  
The Market offers a superb range of produce, including delicious foods to enjoy at the market or treats to take away



**Parking**  
On-street, multi-storey and other car parks nearby



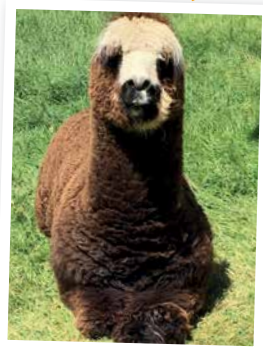
# Stonehall Wildlife Park

Kilcornan, Co. Limerick

Stonehall hosts a wide variety of rare & domestic animals, from Llamas, Alpacas, Ostriches, Emus, Rheas, & a large variety of Parrots & Birds of Prey.

Enjoy the nature trail walk.

Caters for all weather conditions. Visit the indoor pets corner, bring your picnic and enjoy the indoor play area where there are a variety of go-karts and bouncy castles for the children.



## Visiting



**Contact**  
Stonehall Wildlife Park  
Curraghchase, Kilcornan  
Co. Limerick, V94 D7E8  
Tel: 061-393 940  
[info@stonehallvisitorfarm.ie](mailto:info@stonehallvisitorfarm.ie)  
[www.stonehallwildlifepark.ie](http://www.stonehallwildlifepark.ie)



**SatNav: Latitude/Longitude**  
52.6080, -8.8680



**Opening Times**  
April, May, June, Sept, Oct  
Sat & Sun 11:00–18:00h  
July & Aug. Open 7 days a week  
Mon to Sat 11:00–18:00h  
Sun 11:00–18:00h  
Nov to Mar closed  
Open Dec for Santa's Grotto



**Admission Rates**  
Adult €9, Child €9, Family rate available  
Separate rate for Santa's Grotto



**Parking**  
Parking facilities for coaches & cars

# Coillte Forest Park

The Park covers 313 hectares of mixed woodlands, parkland and lakes around the shell of the 18th century Curragh Chase House. The area provides a rich habitat for a diverse range of animals and plants.  
[www.coillte.ie](http://www.coillte.ie)





# Lough Gur Heritage Centre & Lakeshore Parklands

Bruff, Co. Limerick

## One of Ireland's archaeological and historical gems



The scenic lakeshore Heritage Centre and Parklands of Lough Gur is a short drive from Limerick city. The on-site visitor centre overlooks the tranquil water and hosts a modern interactive exhibition that captures the story of the unique environmental and archaeological treasures that can be found within the sprawling grounds. Home to Ireland's oldest and largest

stone circle and only expansive lake in Limerick, Lough Gur offers an ideal location for a brisk nature walk throughout the year and a picnic during the summer time.

Children will enjoy exploring the homeplace of Lough Gur fairies. They can also hunt for all native Irish tree species that are cleverly mapped out on a Tricky Tree Trail.

Lough Gur Heritage Centre offers a wide range of guided or self guided tours.

**€1 off admission price on presentation of this guide.**

## Visiting



### Contact

Lough Gur Heritage Centre  
£ Lakeshore Parklands, Lough Gur  
Bruff, Co. Limerick, V35 ED96  
Tel: 061-385 186  
info@loughgur.com  
www.loughgur.com



### Location

From Limerick City follow R512 (Kilmallock Road) south 21km through Ballyneety village. First left after Reardons Pub in Holycross



**SatNav: Latitude/Longitude**  
52.5233, -8.5203



### Opening Times

Heritage Centre: Mon to Fri 10:00–17:00h. Sat & Sun 12:00–18:00h  
Go to [www.loughgur.com](http://www.loughgur.com) for extended opening times  
Winter opening hours:  
Mon to Fri 10:00–16:00h  
Sat & Sun 12:00–16:00h



### Admission Rates

Adult €5, Child €3  
Senior/Student €4, Family €15  
Show this guide for €1 off entry



### Information

Guided tours available. Tea/Coffee light refreshments available  
Fairy Trail and Tree Trail



### Parking

Coach and Car parking available



# Desmond Castle Newcastle West

Newcastle West, Co. Limerick

## Step back in time



This is a unique heritage attraction located in the centre of Newcastle West—a Co.Limerick town located on the N21 between Limerick City and Killarney, Co.Kerry. Desmond Hall Newcastle West was built by the Fitzgeralds (Earl of Desmond) in the 1200s.

It is an imposing two-storey structure and was used by the Earls of Desmond for banqueting and entertainment. It has a fascinating history; having survived battles, sieges and rebellions.

The hall, vaulted lower chamber

and adjoining tower were all constructed during the 15th century (the hall and chamber were built on the remains of a 13th century structure of similar size). Its restored medieval features include an oak musicians' gallery and a limestone hooded fireplace.

## Visiting



### Contact

Desmond Castle Newcastle West  
The Square, Newcastle West  
Co. Limerick, V42 YD76  
Tel: 069-77408  
desmondhall@opw.ie  
www.heritageireland.ie



### Location

Situated in the town centre of Newcastle West



**SatNav: Latitude/Longitude**  
52.4506, -9.0607



### Opening Times

Apr 23 to Sept 02  
Daily 10:00–18:00h  
Last admission 45 mins before closing



### Admission Rates

Free of Charge



### Information

Admission by guided tour only  
Partial access for visitors with disabilities



### Parking

Parking available close to site



# Adare Heritage Centre

Adare, Co. Limerick

Ireland's prettiest village



Adare Heritage Centre open all year round, houses a number of outlets including:

**Adare Historical Exhibition**  
Journey through the historical exhibition, a reconstruction of Adare's unique past. The story is told through model re-enactments with storytelling in English.

**Adare Woollens Ltd** Traditional Irish woollens & knitwear.

**Black Abbey Crafts** Extensive range of Irish crafts & gifts.

**Currans Heraldry** The family crest experts with a database of 120,000 Irish, British, & European names.

**Desmond Castle Tours** Visit a 13th century Norman Castle. Guided Tours from June to Sept. A shuttle bus takes you from the Heritage Centre to the historical site. Enquires to Adare Heritage Centre. Walking Tours also available on request.

**The Dovecote Restaurant**  
Authentic home cooked food open all day.

**Tourist Information Point**  
A selection of gifts & souvenirs, information & assistance.

## Visiting



### Contact

Adare Heritage Centre  
Main Street, Adare  
Co. Limerick, V94 DW7  
Tel: 061-396 666  
info@adareheritagecentre.ie  
www.adareheritagecentre.ie



### Location

Main Street, Adare



**SatNav: Latitude/Longitude**  
52.5647, -8.7900



### Opening Times

Open daily 09:00–18:00h Summer  
Open daily 09:00–17:00h Winter



### Admission Rates

Free admission to historical exhibition

**Castle Tour:** Adult €10

Senior/Student €8

Family Ticket €20

June to Sept. Other times by special arrangement



### Information

Craft & Gift Shopping, Heraldry, Restaurant, Tourist Information & Toilet Facilities



### Parking

Convenient Free Car & Coach parking at the rear of the Adare Heritage Centre



# Foynes Heritage Town

Foynes, Co. Limerick



Located on the scenic N69 driving route.



Foynes is a Discovery Point on the Wild Atlantic Way and is part of the N69 Coastal Driving route (Limerick to Kerry). This busy seaport was Ireland's first transatlantic airport from 1939-1947. Foynes was where the first transatlantic passenger flights from the United States arrived in 1939, and it was in

Foynes in 1943 that Chef Joe Sheridan invented the world's most famous drink "Irish Coffee".

There is a kids playground in the centre of the village and wooded & coastal walks in the area.

## Visiting



### Contact

Foynes Flying Boat & Maritime Museum  
Heritage Centre, Foynes,  
Co. Limerick, V94 T6C1  
Tel: 069-65416  
info@flyingboatmuseum.com  
www.flyingboatmuseum.com



### Location

On the N69, 37km from Limerick City



**SatNav: Latitude/Longitude**  
52.6115, -9.1097



### Information

A range of restaurants and shops available



### Parking

Ample parking available







# Foynes Flying Boat & Maritime Museum

Foynes, Co. Limerick

WILD ATLANTIC WAY  
SUI AN ATLANTAIGH FHARAIN



## Featuring Maureen O'Hara Exhibition



The award winning Foynes Flying Boat & Maritime Museum excitingly captures the unique story of how Foynes was once the centre of the aviation world through a comprehensive range of informative displays & interactive exhibits. Walk in the footsteps of JFK, Bob Hope, Eleanor Roosevelt and many other dignitaries, movie stars & refugees who landed in Foynes during World War II. Visitors have a once in a lifetime opportunity to board the world's only **Boeing 314 Flying Boat** and to try their hand at



being a pilot on our flight simulators.

**New Maureen O'Hara Exhibition** is dedicated to preserving the memory of Ireland's most famous movie star. It showcases a treasure trove of her personal and movie memorabilia including the iconic grey tweed jacket from 'The Quiet Man' & her **Oscar**.

Foynes is nestled along the banks of the Shannon Estuary, a recommended **Wild Atlantic Way Discovery Point**.

## Visiting



### Contact

Foynes Flying Boat & Maritime Museum  
Foynes, Co. Limerick, V94 T6C1  
Tel: 069-65416  
info@flyingboatmuseum.com  
www.flyingboatmuseum.com



### Location

On N69, 37 km from Limerick City and 64 km from Tralee



### SatNav: Latitude/Longitude

52.6115, -9.1097



### Opening Times

Mid-Mar to Mid-Nov 09:30–17:00h  
June, July & Aug 09:30–18:00h  
Open Daily on above dates  
Last entry 1 hour before closing



### Admission Rates

Adult €12, Child €6 (Under 5 free)  
Family(2+4) €30, Senior/Student €10  
Group Rates Available



### Information

Tourist Information Point  
Visit the New Irish Coffee Lounge  
1940s style Restaurant (O'Regan's)  
Gift shop carrying an exciting range of unique giftware



### Parking

Ample car and coach parking



## Birthplace of Irish Coffee

Step back in time to 1943 & watch a 3D Holographic show recreating the night Chef Joe Sheridan invented Irish Coffee. Enjoy an Irish Coffee in O'Regan's Restaurant which offers home baked cuisine in a beautiful 1940's setting. Explore the history of the River Shannon by visiting the Maritime Museum & savour the panoramic views of the Shannon Estuary from the top of the Control Tower.



# SPECIAL Discoveries

— in the Shannon Region —

## Festivals



### Limerick Riverfest

Limerick City 01st–04th May 2020

Whether you are a foodie, a fun runner, a watersport thrill seeker or just looking for a laid-back fun filled family day out then Limerick is the place to be on Riverfest Weekend.

[www.limerick.ie](http://www.limerick.ie)



### Burren Slow Food Festival

The Burren, Co. Clare 15th–17th May 2020

Immerse yourself in the culinary delights of the Burren Region on this weekend where cookery demos, artisan food producers and farmers markets await you.

[www.burren.ie](http://www.burren.ie)



### Killaloe Chamber Music Festival

Killaloe, Co. Clare 04th–07th Jun 2020

Four days of stunning music-making, performed by the finest of Irish and International musicians in the picturesque town of Killaloe.

[www.killaloemusicfestival.com](http://www.killaloemusicfestival.com)



### Doolin Folk Festival

Doolin, Co. Clare 12th–14th Jun 2020

The Doolin Folk Festival presents powerful music in an intimate setting and ensures that audiences and musicians can feel at one and just enjoy the communal spirit.

[www.clare.ie](http://www.clare.ie)



### Limerick Garden Festival

Limerick City 21st Jun 2020

This festival takes place in Limerick Milk Market and features over 50 traders offering plant, garden and food delights as well as all-day garden expert talks.

[www.limerick.ie](http://www.limerick.ie)



**Looking for laughs, music, food, and entertainment? Look no further than Ireland's Shannon Region with an array of festivals to choose from. Whether you want to dance the night away, taste the delights of the region or simply kick back and listen to music from the most talented musicians, you've come to the right place!!**



## **Limerick Pride Festival**

**Limerick City 06th–12th Jul 2020**

Limerick Pride Festival offers a range of events such as support meetings, workshops, music and club nights promoting diversity and equality.

[www.limerick.ie](http://www.limerick.ie)



## **Birr Vintage Week & Arts Festival**

**Birr, Co. Offaly 02nd–10th Aug 2020**

Turn back time in the beautiful Georgian heritage town of Birr and enjoy a dynamic range of vintage and modern events for all ages during the Annual Birr Vintage Week & Arts Festival.

[www.birrvintageweek.com](http://www.birrvintageweek.com)



## **Tullamore Show**

**Tullamore, Co. Offaly 09th Aug 2020**

Come along to one of Ireland's premier agricultural events. Showcasing the finest livestock and offering over 700 trade stands, it is Ireland's largest one day show attracting approx. 60,000 visitors in recent years.

[www.tullamoreshow.com](http://www.tullamoreshow.com)



## **Lisdoonvarna Matchmaking Festival**

**Lisdoonvarna, Co. Clare 04th–30th Sep 2020**

This festival is over 160 years old and attracts up to 60,000 people from all over the world. Music and "craic" all day through with third generation matchmaker Willie Daly available to bring hopeful singles together.

[www.matchmakerireland.com](http://www.matchmakerireland.com)



## **OFFline Film Festival**

**Birr, Co. Offaly 07th–11th Oct 2020**

OFFline Film Festival is an exciting event for film lovers and makers alike. Irish and international films are screened in an array of quirky venues around the town to enthusiastic audiences.

[www.offlinefilmfestival.com](http://www.offlinefilmfestival.com)

# SPECIAL Discoveries

— in the Shannon Region —

## Blue Flag Beaches



### Lahinch

Lahinch, Co. Clare. Sat Nav 52.9336,-9.3478

Lahinch beach is located just a short drive from the Cliffs of Moher. It is the ideal beach for surfing, sea kayaking and kite surfing. Lahinch is a popular seaside town with lots of shops, restaurants and activity providers all waiting to welcome you.



### Fanore

Fanore, Co. Clare. Sat Nav 53.1173, -9.2893

Fanore Beach is a sandy beach located near the seaside village of Fanore. The beach lies in the heart of the Burren where visitors flock to soak up the beauty this tranquil region has to offer.



### Kilkee

Kilkee, Co. Clare. Sat Nav 52.6785,-9.6534

Enjoy all that this seaside town has to offer. Stroll the sandy beach while taking in the picturesque views. A range of watersports and activities can be enjoyed during high season.



### Cappa

Kilrush, Co. Clare. Sat Nav 52.6277,-9.5014

Cappa beach is a small rocky beach located just off Cappa Pier. Stroll the pier while keeping an eye for the majestic bird life or the more adventurous can enjoy a jump from the pier!



### White Strand

Miltown Malbay, Co. Clare. Sat Nav 52.8111,-9.5428

A small, rocky beach White Strand offers stunning views of County Clare. The beach itself is located slightly inland with the village of Miltown Malbay offering plenty local amenities.



**The Blue Flag is an international award for beach excellence presented to beaches which have excellent water quality and meet other specified criteria including environmental management, litter control and education. With several beaches in the region meeting this standard, why not take some time out to explore the stunning coastline.**



### **White Strand**

**Doonbeg, Co. Clare. Sat Nav 52.7484,-9.5678**

A secluded white sand beach that highlights the magnificent coastal scenery of Clare. The beach is sheltered on both sides by rugged cliffs and is highly popular during high season for its safe swimming and water cleanliness.



### **Spanish Point**

**Spanish Point, Co. Clare. Sat Nav 52.8426,-9.4330**

Located between Miltown Malbay and Quilty this beach offers unrestricted views of the Atlantic Ocean. It's both a surfers paradise and a picnic lovers haven with summer surfing schools and picnic benches scattered along the length of the beach.



### **Ballycuggeran**

**Twomilegate, Co. Clare. Sat Nav 52.8367,-8.4681**

Ballycuggeran is a small lakeside bathing area located on Lough Derg. It is lifeguarded during the summer months and offers a safe, tide free place to enjoy a swim.



### **Mountshannon**

**Mountshannon, Co. Clare. Sat Nav 52.9295,-8.4303**

Enjoy a family day out at Mountshannon bathing area located on one of Irelands major freshwater lakes and be captivated by all the ecologically friendly region has to offer.

# SPECIAL Discoveries

— in the Shannon Region —

## Fantastic Family Fun

Ireland's Shannon Region has fantastic family fun activities. Here are some for you to choose from.



### Fairy Woods Castleconnell

Castleconnell, Limerick

Let your imagination take you on a journey like no other! As you stroll through these woods keep your eyes peeled for the woodland fairies Dixie and Pixie and their colourful fairy houses!

[www.limerick.ie](http://www.limerick.ie)



### The Clare Glens

Limerick/Tipperary

If you are looking to be at one with nature then this is the place for you! With breath taking scenery, loop walks, numerous waterfalls and wild dense forestry this region offers tranquility and calm to all who visit.

[www.limerick.ie](http://www.limerick.ie)



### Croghan Hill

Bog of Allen, Co. Offaly

Croghan Hill is the remains of an extinct volcano and rises from the Bog of Allen in County Offaly. Offering extensive views of the surrounding midland counties, it is an ideal location for a short walk or picnic.

[www.mountainviews.ie/summit/1017](http://www.mountainviews.ie/summit/1017)



### The Fairy Trail

Lough Boora, Co. Offaly

Discover fairy avenue in Lough Boora—home to 14 fairies, each of whom brings something special to the park.

For more information visit [www.loughboora.com](http://www.loughboora.com)



### Kilkee Habitat Trail

Kilkee, Co. Clare

Get those walking shoes on and head to the cliffs where you can learn of and admire the many diverse wildlife habitats of Kilkee, a postcard perfect seaside village on the Wild Atlantic Way.

[www.kilkee.ie](http://www.kilkee.ie)

# Your Daily Adventure

## Ireland's Shannon Region

### A-Z Index

Ref	Attraction	See page...
50	Adare Heritage Centre	40
22	Aillwee Cave & Birds of Prey Educational Centre	22/23
16	Ballina Killaloe	16
6	Birr Castle Gardens & Science Centre	10
7	Birr Heritage Town	11
21	The Burren Centre	21
25	Burren Smokehouse	25
24	Caherconnell Fort	24
20	Clare Heritage & Genealogy Centre	20
39	Clare Museum	33
29	Cliffs of Moher Visitor Experience	27
49	Desmond Castle Newcastle West	39
18	Discover Lough Derg	18/19
37	Dolphin Discovery	32
32	Dolphinwatch	29
26	Doolin Cave	25
28	Doolin Ferry Co—Bill O'Brien's	26
27	Doolin2Aran Ferries	26
40	Ennis Friary	33
52	Foynes Flying Boat & Maritime Museum	41
51	Foynes Heritage Town	40
4 5	The Great Outdoors	9
9	Holycross Abbey	11
43	The Hunt Museum	36
11	John Hanly & Co. Ltd	13
42	King's Island	36
45	Limerick City Gallery of Art	37
33	Loop Head Lighthouse	29
12	Lorrha Monastic Village	13

Ref	Attraction	See page...
15	Lough Derg Blueway	16
48	Lough Gur Heritage Centre & Lakeshore Parklands	39
46	Milk Market Limerick	38
34	Miltown Malbay	30
31	Moher Hill Open Farm	28
13	Mountshannon	15
10	Nenagh	12
14	O'Briensbridge Village	15
44	The People's Museum of Limerick	37
19	Portumna	20
23	Poulnabrone Dolmen	24
30	The Rock Shop	28
8	Roscrea Heritage Centre	11
41	Saint Mary's Cathedral	35
35	Scattery Island Centre	31
1	The Shannon Estuary Way	7
2	Shannon Ferry	7
	Special Discoveries—Blue Flag Beaches	44/45
	Special Discoveries—Festivals	42/43
	Special Discoveries—Fantastic Family Fun	46
47	Stonehall Wildlife Park	38
3	Tullamore D.E.W. Visitor Centre	9
36	Vandeleur Walled Garden & Woodland Bistro	31
17	Visit East Clare	17
38	West Coast Aqua Park	32

Ireland's Shannon Region  
Map of Attractions

4/5



MAKERS OF THE

Authentic Claddagh Ring™

SHOP ONLINE



CLICK & COLLECT

VISIT OUR STORES

25 MAINGUARD ST. GALWAY ☎ 091 562 310 2 GRAFTON ST. DUBLIN 2 ☎ 01 607 4018

📌 FB.COM/CLADDAGHJEWELLERS 📧 SHOP@THECLADDAGH.COM

WWW.THECLADDAGH.COM



LEGEND OF THE CLADDAGH RING™

VISITOR CENTRE GALWAY



GALWAY'S NEW AND EXCITING CLADDAGH RING VISITOR CENTRE AND WORKSHOP

Learn about the origins of Galway's iconic Claddagh ring which dates back over 300 years.

Come and see where the Authentic Claddagh Ring™ is made.

26 SHOP STREET, GALWAY.

🌐 WWW.CLADDAGHLEGEND.COM 📌 FB.COM/CLADDAGHLEGEND

TAX FREE SHOPPING FOR NON EU RESIDENTS