

The BEST Visitor Attractions

GLANCE

Your Daily Adventure

2020/21

FREE
Visitor
Guide



Ireland's
West

WIN
a Great
Lighthouses
of Ireland
holiday



DISCOVERIRELAND.IE

YourDailyAdventure.com

WIN

an Amazing Holiday Break at a



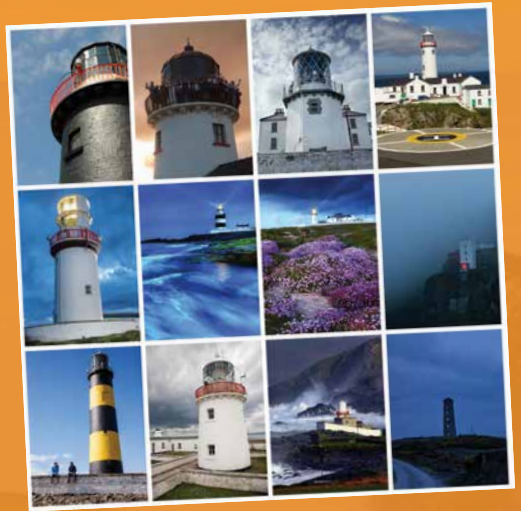
Take our
2-minute online
feedback survey,
and you could win
this fantastic prize.

This Daily Adventure guide provides you with lots of great ideas on things to do, see and enjoy during your Ireland holiday. We encourage and welcome reader feedback and, therefore, if you take our 2-minute **online survey** you will have a chance of winning a wonderful Lighthouse Holiday Break for up to 5 people sharing at a choice of locations around Ireland.

Take the Survey and Win

Our feedback survey will take you no more than 2 minutes to complete, and you can do so online via www.YourDailyAdventure.com/enter, OR you can scan the QR code above.

You must complete the online survey no later than **Friday, October 9, 2020**.



The Prize

A Stay at an Amazing Irish Lighthouse

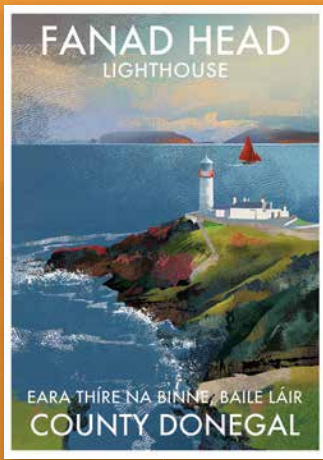
Great Lighthouses of Ireland features 14 amazing lighthouses perched high in dramatic locations around Ireland's stunning coastline. They are wonderful to visit, and visitors can also stay at eight of these lighthouses.

See www.GreatLighthouses.com.

The lucky winner, selected from those completing our survey, will get to enjoy an exhilarating 3-night stay, for up to 5 people sharing, at their choice of lighthouse locations. The prize break must be availed of within 12 months of winning.



Great Lighthouse of Ireland



10 posters to be won

Every entry will be entered in a draw to win one of 10 fabulous posters by award-winning author and illustrator, Roger O'Reilly. The collection of almost 90 lighthouses of Ireland is available on www.IrelandPosters.ie As shown here the posters capture the uniqueness of each lighthouse setting. They are great for framing and bring wild and natural Ireland into any room where they hang.

Winners of the posters will also be selected on Friday, October 16, and they can select which lighthouse poster they wish to receive as their prize from IrelandPosters.ie.

Terms and Conditions

- You must be aged 18 or over to participate.
- The survey must be completed online no later than Friday, October 9, 2020.
- The survey may only be completed once. Entering more than once will disqualify from the opportunity to win the prize.
- One lucky winner will be selected from the survey returns and will be selected on Friday, October 16, 2020.
- The '3-night Lighthouse Holiday Break' must be availed of within 12 months of winning the prize (dates subject to availability at the selected lighthouse).

Welcome to Ireland's West



WILD ATLANTIC WAY
SLÍ AN ATLANTAIGH Fháin

- Signature Discovery Point
- The Shannon Estuary Way
- Blue Flag Beaches
- Car Ferry Crossing

For details on
**Attraction
 Offers & Events**
 visit
YourDailyAdventure.com

NORTH
ATLANTIC
OCEAN

Opening Dates and Times

Opening Dates and Times are subject to change and may vary throughout the seasons and by day of week. Establishments indicating 'open year-round' may still close, for instance, on Christmas Day. We recommend you verify dates and times directly with each featured establishment, particularly if travelling distances. Entertainments operate subject to demand and pre-booking is normally required.

Admission Rates

The admission rates quoted in this publication are the normal rates for individual adult admissions, children and families. Many of the featured attractions and entertainments do offer special rates for groups, students and seniors. The rates quoted are the 2020 rates as submitted by the individual businesses.

Errors and Omissions

Every care has been taken in the compilation of this guide to ensure its accuracy and compliance with the consumer protection laws of Ireland. Glance Promotions cannot accept responsibility for errors or omissions, but where such are brought to our attention future editions will be amended accordingly.

Contents



Sustainable printing practices implemented. Please **pass on** or **recycle** when finished.



Ref	Attraction	See page...
1	Fanad Lighthouse	7
2	Glenveagh National Park	7
3	Slieve League Cliffs	8
4	Blue Flag Beaches of Donegal	8
4	Glebe House & Gallery	9
5	Newmills Corn & Flax Mills	9
6	Donegal Castle	9
7	Glenar Waterfall	10
8	Parke's Castle	10
9	Fenagh Visitor Centre	10
10	Sligo Abbey	11
11	Carrowmore Megalithic Cemetery	11
12	Drumcliffe Church & W.B. Yeats Grave	11
13	Eagles Flying	12
14	Arigna Mining Experience	12
15	Boyle Abbey	13
16	Lough Key Forest & Activity Park	13
17	Zipit Forest Adventures	14
18	The National Famine Museum Strokestown Park	15
19	Corlea Trackway Visitor Centre	15
20	Drumlane Abbey & Round Tower	16
21	The Cathedral of Saint Patrick and Saint Felim	16
Blue Flag Beaches of Mayo & Sligo	17	
22	The Jackie Clarke Collection	18
23	The Father Peyton Centre	18
24	Céide Fields	19
25	Achill Island	19
26	O'Malley Ferries Clare Island and Inishturk Island	20
27	Inishturk Island	20
28	Westport Cruises	21
29	Westport House	21
30	National Museum of Ireland	22
31	Jeremiah Higgins	23
32	Clare Island Ferry—O'Grady's	23
33	The Sheep & Wool Centre	25
34	Killary Adventure Company	25
35	Delphi Resort	26
Blue Flag Beaches of Galway	26	
36	Kylemore Abbey	27
37	Clifden	27
38	Glengowla Mines & Working Farm Experience	28
39	Aughnanure Castle	29
40	Ionad Cultúrtha an Phiarasaigh, Conamara	29
41	Legend of the Claddagh Ring	29
42	Great Escape Rooms	30
43	Galway Atlantiquaria	30
44	Trad on the Prom	31
45	Aran Island Ferries	32
46	Aran Islands	32
47	Portumna Castle & Gardens	33
48	Athenry Castle	33
49	Burren Nature Sanctuary & Café	34
50	Saint Mary's Cathedral	35
51	Stonehall Wildlife Park	35
52	Foynes Flying Boat & Maritime Museum	35
	Special Discoveries —Great Walking Trails	36/37
	Special Discoveries—Festivals	38
	A-Z Index	39

Ireland's West is a place to get away from it all. There are places in Ireland's Western Regions where you can face into the breeze and listen to nothing but the Atlantic Ocean crashing, places where you can hear the actual sound of silence....

Cead Mile Fáilte a Hundred Thousand Welcomes – to Ireland's West

With a backdrop of the Atlantic Ocean to its west and the mighty River Shannon to its east, Ireland's West is renowned for its great beauty, activity, history and for its wealth of great visitor attractions and entertainments.

This free publication aims to enhance your visitor experience.

Plenty of choice

Variety is the essence of a good holiday and Ireland's West certainly provides a wide range of attractions and visitor experiences from historic houses and museums, castles and monastic sites, adventure parks and island boat trips, through to traditional Irish music and dance.

Detailed information is included on each attraction and visitor experience including eircodes and sat nav co-ordinates, opening times and admission rates.

Enjoy!

Finally, we do hope that you take the time to explore the rich heritage and delights of Ireland's West and that your 'Daily Adventure' is a rewarding and enjoyable one.

Guides for other regions in Ireland are widely available.

We would welcome your feedback on the guide to info@glancepromotions.ie



This brand is a trademark of Fáilte Ireland and is used in this publications with their permission.



Published by



Publisher, John Rice.
Published by Glance Promotions,
Tipperary, Ireland.
Tel: 061-338588,
info@glancepromotions.ie
www.glancepromotions.ie
Design: OpticNerve.ie

Associate Member of



First European Member of



The International Association of
Visitor Information Providers

Available from



National Tourism Development Authority
Tourist Information Offices



Fanad Lighthouse

Fanad, Co. Donegal

A Great Lighthouse of Ireland



Standing between idyllic Lough Swilly and Mulroy Bay, Fanad Lighthouse has been voted one of the most beautiful lighthouses in the world.

With its location in the Donegal Gaeltacht (an Irish speaking area) on the eastern shore of the windswept Fanad Peninsula, it's little wonder that this lighthouse is a Wild Atlantic Way highlight.

Give yourself plenty of time to take in this coastal corner—time to take in the sensational,

rugged scenery and to really explore the wild and wonderful natural world around you. Lough Swilly, a glacial fjord, is regularly visited by whales, porpoises and dolphins.

Learn more about Fanad Lighthouse by taking a guided tour, during which you can climb to the top of the tower for spectacular 360 views of land and sea. There's a craft shop with a range of unique and local gifts and a café with a view that's hard to beat. Or to truly get away from it all, enjoy a relaxing stay at one of the characterful lightkeepers' houses.

To plan more visits to Great Lighthouses of Ireland see www.greatlighthouses.com

Visiting



Contact

Fanad Lighthouse
Fanad, Co. Donegal, F92 YC03
Tel: 083 809 1199
Intt: +353 83 809 1199
info@fanadlighthouse.com
www.greatlighthouses.com
www.fanadlighthouse.com



Location

Located on the Eastern shore of Fanad Peninsula



SatNav: Latitude/Longitude
55.2761, -7.6319



Opening Times

Apr, May, June & Sept:
Tues to Sun, 10:00–17:00h
Jul & Aug:
Open 7 days a week, 10:00–18:00h
Oct to Mar:
Limited opening hours. Please check website



Admission Rates

Adult €10, Child €3, Child (U5) Free
Family (2+2) €22, (2+3) €25



Information

Online booking
www.fanadlighthouse.com
Children must be 1.2m to climb tower



Parking

Parking on site



Glenveagh National Park Pairc Náisiúnta Ghleann Bheatha

Letterkenny, Co. Donegal

Conserving plants, animals and landscapes



Glenveagh National Park lies in the heart of the Derryveagh Mountains in the North-West of County Donegal. It is a remote and hauntingly beautiful wilderness of rugged mountains and pristine lakes. The Park, over 16,000 hectares is the former Glenveagh Estate,

including most of the Derryveagh Mountains.

The wild setting around Lough Veagh hosts the largest herd of Red Deer in Europe and since 2001 is home to Ireland's only Golden Eagles.

The Castle is surrounded by extensive, ornate and renowned gardens, with a rich variety

of trees, shrubs and flowers from around the world.

There is a beautifully located tearoom in the castle courtyard open all year round, where one can enjoy delicious home baking freshly made in the castle kitchen.

Visiting



Contact

Glenveagh National Park
Churchill, Letterkenny
Co. Donegal, F92 P993
Tel: 076-100 2537
glenveaghbookings@ahg.gov.ie
www.glenveaghnationalpark.ie



Location

24km north-west of Letterkenny and can be reached via the villages of Kilmacrennan or Churchill



SatNav: Latitude/Longitude
55.0595, -7.9393



Opening Times

The park is open all year round
Visitor facilities: 09:00–17:00h



Admission Rates

National Park & Visitor Centre: Free
Castle Tour: Adult €7, Senior/
Student/Child (6+yrs) €5, Family €15
Admission to castle is by guided tour only and takes approx. 30mins



Parking

On-site car park



Slieve League Cliffs

Teelin, Co. Donegal

One of the highest and finest marine cliffs in Europe

Slieve League Cliffs, situated on the south west coast of Donegal, are one of the highest and finest sea cliffs in Europe.

At 601 metres (1,972 ft) views from here include Donegal Bay and surrounding counties Leitrim, Sligo and Mayo. To the west is the Atlantic Ocean, and North west is Rathlin O'Byrne Island and Glencolmille. Nearby is Benbulbin with its megalithic tombs and mythical links to Finn McCool and the Fiona of old, and Knoch na Rí at Carrowmore where one of the largest and oldest known Neolithic cemeteries in Europe lies.



Please remember when visiting, not to disturb the monuments of Irish cultural heritage. There are no fences, so please respect the area.

If you wish to learn more, visit the Slieve League Cliffs centre.

Visiting



Contact

Slieve League Cliffs
Teelin, Co. Donegal, F94 DH92
Tel: 074 973 9077
www.slieveleaguecliffs.ie



Location

45 mins from Donegal Town on the N56 and R263
20 mins from Killybegs on the R263



SatNav: Latitude/Longitude
54.6343, -8.6460



Information

Café & Craft Shop

Parking

Car parking available



Blue Flag Beaches of Donegal

Enjoy a day at the beach

The spectacular beaches of Donegal offer world renowned surf and long sandy shores. With many beaches meeting the Blue Flag standard you are certain to be never far from a great day out at the beach.

The miles of beaches available are great for swimming, walking, exploring rock pools, wind-surfing, kite-surfing and all sorts of beach fun.

The Blue Flag is an international award for beach excellence. It is presented to beaches, which have excellent water



quality, which provide a range of services and visitor facilities, and which fulfil other specified criteria including environmental management, litter control and education.

If you enjoy the great outdoors, there's no better place for a holiday. There's so much to see and do!

Visiting



Contact

For up-to-date listings of current Blue Flag Beaches please visit www.blueflagireland.org



SatNav: Latitude/Longitude

Carrickfinn: 55.0438, -8.3401
Culdaff: 55.2859, -7.1651
Downings: 55.1945, -7.8340
Fintra: 54.6523, -8.4951
Killahoey: 55.1885, -7.9553
Magherawardan: 55.1824, -7.6057
Marble Hill: 55.1771, -7.9024
Murvagh: 54.5945, -8.1646
Portnoo/Naran: 54.8400, -8.4631
Rathmullan: 55.1267, -7.05538
Rossnowlagh: 54.5510, -8.2111
Shroove: 55.2295, -6.9318



Glebe House & Gallery

(The Derek Hill Collection)

Letterkenny, Co. Donegal

A Regency House dated 1828, set in woodland gardens, decorated with William Morris textiles, as well as Islamic and Japanese art. The collection includes 300 works by leading 20th century artists; Picasso, Kokoshka and also Irish and Italian artists. Exhibitions are shown in the adjoining gallery. Access to ground floor of the Gallery for people with disabilities.



Visiting

Contact

Glebe House and Gallery
Churchill, Letterkenny
Co. Donegal, F92 WP70
Tel: 074-913 7071
glebegallery@opw.ie
www.heritageireland.ie

SatNav: Latitude/Longitude
54.9520, -7.7308

Opening Times

Please see www.glebegallery.ie for detailed opening times

Admission Rates

Adult €5, Senior €4
Child/Student €3, Family €13
Gallery Free of Charge

Parking

Car & coach parking available

Newmills Corn & Flax Mills

Letterkenny, Co. Donegal

With the oldest surviving building said to be 400 years old this whole complex is an interesting reminder of a stage in the industrial development of Ireland, which has given way to a more sophisticated, but far less fascinating technology. Experience the pleasure of seeing one of the largest waterwheels in Ireland in action as it drives the machinery of the corn mill.



Visiting

Contact

Newmills Corn and Flax Mills
Churchill Road, Letterkenny
Co. Donegal, F92 F205
Tel: 074-912 5115
newmills@opw.ie
www.heritageireland.ie

SatNav: Latitude/Longitude
54.9292, -7.8082

Opening Times

May 21 to Sept 30
Daily 10:00-18:00h
Last admission 45 mins before closing

Admission Rates

Free of Charge

Parking

Parking available

Donegal Castle

Donegal Town, Co. Donegal

Built by the O'Donnell chieftain in the 15th century this Castle has extensive 17th century additions. It is furnished throughout and includes Persian rugs and French tapestries. Information panels chronicle the history of the Castle owners from the O'Donnell chieftains to the Brooke family. Limited access for people with disabilities.



Visiting

Contact

Donegal Castle
Donegal Town, Co. Donegal, F94 P996
Tel: 074-972 2405
donegalcastle@opw.ie
www.heritageireland.ie

SatNav: Latitude/Longitude
54.6559, -8.1092

Opening Times

Easter to mid-Sept, Daily 10:00-18:00h
Mid-Sept to Easter, Thurs to Mon
09:30-16:30h
Last admission 45 mins before closing

Admission Rates

Adult €5
Senior/Group €4
Child/Student €3, Family €13

Parking

Car & coach parking available
close to site

Glencar Waterfall

Glencar, Co. Leitrim

Glencar Waterfall is 50ft high and is situated in the Glencar Valley. It served as an inspiration to William Butler Yeats and he mentioned it in his famous poem "The Stolen Child".

The waterfall is very impressive after rainfall and can be viewed from a lovely wooded walk area. Near the waterfall you will find picnic areas, a children's playground, café facilities, tourism information and ample parking.



Visiting



Contact

Glencar Waterfall
Glencar, Co. Leitrim, F91 PY6A
www.leitrimtourism.com/stories/glencar-waterfall/



SatNav: Latitude/Longitude

54.3403, -8.3731



Parking

Free car parking

Parke's Castle

Fivemilebourne, Co. Leitrim

A restored plantation castle of the early 17th century, once the home of Robert Parke. The Courtyard grounds contain evidence of an earlier 16th century Tower House structure once owned by Sir Brian O'Rourke who was executed at Tyburn, London in 1591. The Castle has been restored using Irish oak and craftsmanship. Ground floor access for visitors with disabilities.



Visiting



Contact

Parke's Castle
Kilmore, Fivemilebourne
Co. Leitrim, F91 FP71
Tel: 071-916 4149
parkycastle@opw.ie
www.heritageireland.ie



SatNav: Latitude/Longitude

54.2649, -8.3342



Opening Times

Mar 26 to Sept 30
Daily 10:00–18:00h
Last admission 45 mins before closing



Admission Rates

Adult €5, Senior/Group €4
Child/Student €3
Family €13



Parking

Car & coach parking available close to site

Fenagh Visitor Centre

Ballinamore, Co. Leitrim

Fenagh is steeped in history, with two abbeys and significant archaeological sites in the surrounding fields.

Explanations, descriptions, maps and photographs can be viewed in the Heritage Centre, which capture and depict these local treasures beautifully. Dolmen Café and kids play area on-site.



Visiting



Contact

Fenagh Visitor Centre
Fenagh, Ballinamore
Co. Leitrim, N41 E2R6
Tel: 071-964 5590
fenaghvisitorcentre@gmail.com
www.fenagh.com



SatNav: Latitude/Longitude

54.0207, -7.8413



Opening Times

Mon to Fri 10:00–17:30h
Sat and Sun 12:00–17:30h
Closed B/Hols



Information

Heritage Centre, on-site café



Parking

Ample parking is available



Sligo Abbey

Abbey Street, Sligo

Known locally as the Abbey, this Dominican Friary was founded in the 13th century. The site contains a wealth of carvings including Gothic and Renaissance tomb sculptures, well preserved cloister and the only sculptured 15th century high altar to survive in any Irish monastic church. It will inspire and enlighten its visitors. Access is by stone stairway.



Visiting



Contact

Sligo Abbey
Abbey Street, Sligo, F91 K796
Tel: 071-914 6406
sligoabbey@opw.ie
www.heritageireland.ie



SatNav: Latitude/Longitude

54.2710, -8.4700



Opening Times

Mar 26 to Oct 28
Daily 10:00-18:00h
Last admission 45 mins before closing



Admission Rates

Adult €5, Senior/Group €4
Child/Student €3
Family €13



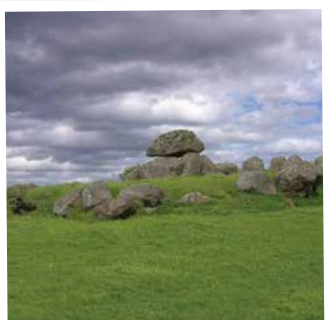
Parking

Public car park close to site

Carrowmore Megalithic Cemetery

Carrowmore, Sligo

The largest cemetery of megalithic tombs in Ireland, with monuments ranging from 5000 to 5800 years old. Archaeologists have recorded over 60 tombs of which 30 are visible. A restored cottage houses an exhibition relating to the site. Access to the tombs may be difficult for people with disabilities. Visitors are advised to wear shoes suitable for uneven terrain.



Visiting



Contact

Carrowmore Megalithic Cemetery
Carrowmore, Sligo, F91 E638
Tel: 071-916 1534
carrowmoretomb@opw.ie
www.heritageireland.ie



SatNav: Latitude/Longitude

54.2509, -8.5193



Opening Times

Mar 26 to Nov 01
Daily 10:00-18:00h
Last admission at 17:00h



Admission Rates

Adult €5
Senior/Group €4
Child/Student €3
Family €13



Parking

Parking available

Drumcliffe Church & W.B. Yeats Grave

Drumcliffe, Co. Sligo

Best known as the final resting place of W.B. Yeats, Drumcliffe Church is set against the striking backdrop of the Benbulbin Mountains. Yeats' grave is marked with a simple headstone with the inscription, "cast a cold eye on life, on death, horseman, pass by." This was Yeats' self penned epitaph together with the instructions that the grave consist of "no marble, no conventional phrase". The graveyard also contains a high cross and nearby is the site of a 6th Century Columbian monastery.



Visiting



Contact

Drumcliffe Church & W.B. Yeats Grave
Drumcliffe, Co. Sligo
www.discoverireland.ie



SatNav: Latitude/Longitude

54.3264, -8.4936



Opening Times

Drumcliffe Tea House and Craft Shop
open daily 09:00-18:00h



Information

Tea House and Craft Shop offers homebaking and quality crafts



Parking

Coach and car park

Eagles Flying

Irish Raptor Research Centre

Ballymote, Co. Sligo

Get up close to the masters of the sky

The multi award-winning attraction for all the family—excitement, fun, photo opportunities and much more at affordable prices.

Ireland's largest Bird of Prey Centre offers the incomparable experience of being up close to eagles, falcons, owls and vultures.

A vast variety of Birds of Prey, some of them with a wingspan of 3 metres, and many other animals are waiting for you.

The interactive and highly entertaining **Bird Shows start at 11:00h and 15:00h, every day.**



Some members of the audience have the chance to have a bird landing on their own hand.

Before and after the show enjoy guided tours through the centre, watch birds in aviaries, cuddle animals in the Petting-Zoo or walk the park lands. In case of rain the show is available in the purpose built Indoor Arena.

Visiting



Contact

Eagles Flying
Ballymote, Co. Sligo, F56 P089
Tel: 071-918 9310
www.eaglesflying.com

Location

From Dublin/Sligo (N4), take the N17 for Galway at Collooney, after having crossed Ballinacarrow, take 1st official road left. Follow the signs for Eagles Flying.
From Galway, take N17 to Sligo. Having passed Achonry, drive another 6km and turn right as soon as the old walls of Temple House end. Follow the signs for Eagles Flying.

SatNav: Latitude/Longitude
54.1021, -8.5728

Opening Times

Apr 01 to Nov 07: 10:30–12:30h and 14:30–16:30h everyday
Shows start at 11:00 and 15:00h (2 hour programme)

Information

Fully wheelchair accessible

Parking

Free parking for cars and coaches



Arigna Mining Experience

Carrick-on-Shannon, Co. Roscommon

One of Ireland's unique attractions

The Arigna Mining Experience will certainly appeal to those looking for a day out with a difference.

Now a popular tourist destination, the visitor centre preserves the energy heritage of this area, and provides visitors with an insight into coal mining life as it was in the Arigna Valley for centuries.

With an ex-Miner as your tour-guide, the visit to the museum includes a DVD presentation, a photographic exhibition, an exhibit area and an underground tour to the



mine's coal face where lighting and sound effects add to the reality of the experience. The centre is fully accessible and is an all-weather facility.

The Arigna Mining Experience and its world class tour is close to the borders of Sligo, Leitrim and Fermanagh.

Visiting



Contact

Arigna Mining Experience
Carrick-on-Shannon
Co. Roscommon, N41 YP78
Tel: 071-964 6466
tours@arignaminingexperience.ie
www.arignaminingexperience.ie

Location

19km from Carrick-on-Shannon (R280), 40km from Sligo (R284), 55km from Enniskillen, 145km from Galway (via Boyle)

SatNav: Latitude/Longitude
54.0771, -8.1202

Opening Times

Open 7 days a week all year
10:00–17:00h

Admission Rates

Adult €10, Child €6
Senior/Student €8
Family (2+3) €33
Groups 20+ €7pp

Information

Gift shop & Coffee shop serving hot and cold Lunches/Snacks, Tea/Coffee

Parking

120 Cars / 40 Coaches



Boyle Abbey

Boyle, Co. Roscommon

Impressive Cistercian Monastery

A well preserved Cistercian Monastery founded in the 12th century. Though mutilated in the 17th & 18th centuries when it was used to accommodate a military garrison, Boyle Abbey retains its ability to impress visitors as one of the most formidable of the early Cistercian foundations in Ireland. Some of the abbey's structures are still intact. It was built in a period of transition between two architectural movements and one of the arches is clearly



in Romanesque style, and the other in Gothic. Parts of the abbey have been restored including the 16th-century gatehouse. Restricted access for people with disabilities.

Visiting



Contact

Boyle Abbey
Boyle, Co. Roscommon, F52 XE16
Tel: 071-966 2604
boyleabbey@opw.ie
www.heritageireland.ie



Location

In Boyle town, off the N4 (Dublin–Sligo Road)



SatNav: Latitude/Longitude

53.9737, -8.2969



Opening Times

Mar 26 to Sept 23
Daily 10:00–18:00h
Last admission 45 mins before closing



Admission Rates

Adult €5, Senior/Group €4
Child/Student €3
Family €13



Information

Check in advance for seasonal events



Parking

Car & coach parking available close to site



Lough Key Forest & Activity Park

Boyle, Co. Roscommon



Ireland's Hidden HEARTLANDS

Enter a world of Adventure—Fun activities for all

Younger children will enjoy hours of fun on the stimulating play equipment in the Adventure Play Kingdom. Go back in time as you are guided through the 19th century servant tunnels on the Lough Key Experience and get lost among the foliage as the Tree Canopy Walk gently rises 9m above the woodland floor.

New for 2020—new Boda Borg challenges. Boda Borg is a unique weather independent activity with innovative challenges, requiring countless skills, teamwork, trial and error to survive the quests. Boda Borg is suitable for adults and children alike from age 7 to the young at heart! Take in the spectacular vistas of Castle Island from the Lakeside Café,



while indulging in homemade delights, confectionery, tea and coffee. Reacquaint yourself with nature on the many trails along the water's edge and throughout the 350 hectares of parkland. Caravan and Camping Park on-site. Also on site is a 50 Berth Marina, Bike Hire, Segway Glides, Mini Jeep Safari and High Wire Course.

Visiting



Contact

Lough Key Forest & Activity Park
Rockingham, Boyle
Co. Roscommon, F52 PY66
Tel: 071-967 3122
info@loughkey.ie
www.loughkey.ie



Location

Just off the N4 (Dublin–Sligo Road)
5 mins from Boyle town and 10 mins from Carrick-on-Shannon



SatNav: Latitude/Longitude

53.9814, -8.2387



Opening Times

March: Wed to Sun 10:00–18:00h
April, May & June:
Open 7 Days 10:00–18:00h
July & August:
Open 7 Days 10:00–19:00h
Sept & Oct:
Wed to Sun 10:00–18:00h
Nov to Feb:
Wed to Sun 10:00–17:00h
Open outside of these hours, subject to prebooking



Admission Rates

Call for details



Information

Lakeside café and gift shop on-site



Parking

Parking for cars and coaches



Zipit Forest Adventures

Lough Key Forest Park

Boyle, Co. Roscommon



Exhilarating Treetop High Ropes Adventure

Zipit is located in the stunning Lough Key Forest Park. With an indoor activity centre, lakeside café and a 50 berth Marina, you can enjoy a full day's activity in the park.

Zipit Forest Adventures is an exciting day out for all the family or anyone looking for an exhilarating and challenging outdoor activity in a natural setting. Ireland's first Treetop High Ropes Course with over 1.6km of activities and over 900 metres of Ziplines. Climb high into the treetops, swing into cargo nets, surf with a difference or try cycling a bike over a narrow treetop bridge before zipping down one of the many ziplines.

Qualified instructors will give you a safety briefing to explain the features of the course and equipment. You have

a maximum of four hours, enough time to complete at least three circuits. The five circuits are suitable for different heights, ages and abilities and if you need any help or encouragement the instructors are never far away.

Other courses:
Tibradden Wood—Dublin 16
Farran Forest Park—Cork
Telephone 051-858 008



Good to Know

Zipit Lough Key covers 1.6km of treetop activities. There are over 92 activities between platforms in the trees. Over 900m of ziplines in total. The longest zipline is 150m. Five Circuits ranging from 1–15 metres. Each circuit is customised and designed with graded difficulty levels. As you progress from tree to tree the challenge increases as you continue at your own pace. Zipit Forest Adventures is a member of the European Ropes Course Association.

Visiting



Contact

Zipit Forest Adventures
Lough Key Forest Park, Boyle
Co. Roscommon, F52 Y597
Tel: 051-858 008
info@zipit.ie
www.zipit.ie



Location

Just off the N4 (Dublin–Sligo Road)
5 mins from Boyle town and 10 mins
from Carrick-on-Shannon



SatNav: Latitude/Longitude
53.9840, -8.2397



Opening Times

Open Feb to Nov
(availability shown online)
Group bookings call 051-858 008
Open 7 days May to Aug
Open School Mid-term breaks,
Easter and B/Hols
See website for full opening hours



Admission Rates

Discounted Online Prices
7–8yrs €15, 9–11yrs €25
12–14 yrs €30, 15+ yrs €35
Group discounts available
Min. Height Restriction of 1 metre
Min. age 7yrs



Information

Lakeside Café
50 Berth Marina, Caravan Park



Parking

Coach and car parking charge €4
coins or tokens



The National Famine Museum Strokestown Park

Strokestown, Co. Roscommon

Telling the story of the Irish Great Hunger



The 18th century Strokestown Park House was where the first landlord was assassinated during the Famine period after his tenants emigrated on some of the worst coffin ships. Through original documents and personal accounts the National Famine Museum Strokestown Park helps

visitors to reflect on Ireland's darkest time. A tour of the house gives an intimate insight into life in The Big House, upstairs and downstairs. The walled garden takes you back to

the glorious surroundings of a planned Georgian estate and gives a unique insight into horticultural practices and garden architecture from the 1740s to the present day.

The National Famine Museum Strokestown Park is an Irish Heritage Trust property.

Visiting



Contact

The National Famine Museum
Strokestown Park, Strokestown
Co. Roscommon, F42 H282
Tel: 071-963 3013
info@strokestownpark.ie
www.strokestownpark.ie



Location

Strokestown Park is 144km from Dublin & 23km from Longford on N5



SatNav: Latitude/Longitude

53.7771, -8.0979



Opening Times

Mar 17 to Oct 31, 10:30–17:30h
Tours three times daily
Nov 01 to Mar 16, 10:30–16:00h
Tours once daily



Admission Rates

Strokestown Park House: Guided
Tour. The National Famine Museum:
Self-Guided. Victorian Walled
Gardens: Self Guided
Adult €14, Child €6, U5yrs Free
Concession/Senior/Student €12.50
Family Ticket (2+4) €29



Information

Strokestown Park Gift Shop stocks a
selection of Books, Gifts, Souvenirs,
Jewellery and Local Crafts. The
Strokestown Park Café is open daily



Parking

Free parking



Corlea Trackway Visitor Centre

Kenagh, Co. Longford

See an Iron Age bog road

The centre interprets an Iron Age bog road that was built in the year 148 B.C. The oak road is the largest of its kind to have been uncovered in Europe. Similar trackways have been found in Germany, the Netherlands and Britain none compare to the trackway at Corlea. It is heavier than any other prehistoric road in Europe.

According to the experts who excavated Corlea Trackway it would have been built to allow the passage of wheeled vehicles. Inside the interpretive centre, an 18m stretch of the preserved trackway is on permanent display in a hall specially designed to preserve the ancient wooden structure.



Visiting



Contact

Corlea Trackway Centre
Kenagh, Co. Longford, N39 XE16
Tel: 043-332 2386
ctrackwayvisitorcentre@opw.ie
www.heritageireland.ie



Location

3km from Kenagh village and
accessed on the Longford–Kenagh
road, R357



SatNav: Latitude/Longitude

53.6127, -7.8454



Opening Times

Apr 02 to Oct 06
Daily 10:00–18:00h
Last admission 45 mins before
closing



Admission Rates

Free of Charge



Information

Picnic area on-site



Parking

Car & coach parking available





Drumlane Abbey & Round Tower

Milltown, Co. Cavan

An ancient monastic site



Overlooking Garfinny Lough, the Abbey, Church and Round Tower believed to have been founded by St. Colmcille, date back to 555 AD. Originally wooden buildings, these were replaced by stone in the 12th Century, and later added to in the 15th Century. Different types

of stone were used in each century, which can clearly be seen when viewing the Round Tower. Towers were erected between the 5th and 13th centuries and are of Christian and ecclesiastical origin. They served as bellfries and security for secret utensils, books, relics and

other valuables in case of sudden attack. The entrance to the tower is about 9 feet from the ground. Breath-taking views over the lake, along with the peaceful countryside, make this site a wonderful natural retreat.

Visiting



Contact
Drumlane Abbey & Round Tower
Milltown
Co. Cavan
info@thisiscavan.ie
www.thisiscavan.ie



Location
Located just outside the village of Milltown



SatNav: Latitude/Longitude
54.0583, -7.4790



Parking
Parking available on-site



The Cathedral of Saint Patrick and Saint Felim

Farnham Street, Cavan

An historic and spectacular Cathedral

Also known as Cavan Cathedral, this Roman Catholic cathedral is located in Cavan town. With its 68m spire and flanking domes, this is one of the most impressive and eye-catching buildings in the town. Completed in 1942 the vast interior is shaped like a basilica and extensive use is made of different colours of marble. The cathedral houses many fine examples of ecclesiastical art and is neo-classical in style with a single spire. The portico consists of a tympanum supported by four massive columns of Portland stone with Corinthian caps. The tympanum figures of Christ, St Patrick and St Felim were created by the Dublin sculptor, Edward Smith. The



twenty eight columns in the Cathedral, the pulpit on the south side and all the statues are of Pavinazetto marble and came from the firm of Dinelli Figli of Pietrasanta in Italy.

Visiting



Contact
The Cathedral of Saint Patrick and Saint Felim
Farnham Street
Cavan
Co. Cavan, H12 X977
Tel: 049-433 1496
pastoralcentre@kilmorediosese.ie
www.kilmoredpc.ie



Location
Located in Cavan town



SatNav: Latitude/Longitude
53.9951, -7.3617



Information
Mass times
Sun: 10:00 & 11:30h
Sat: 19:30h



Parking
Pay & display street parking, car parks also available





Blue Flag Beaches of Mayo & Sligo



Enjoy a day at the beach

With such an extensive coastline around Mayo & Sligo, you would expect to find quality beaches... and you won't be disappointed. The naturally stunning formations of the coastline provide long stretches of golden sand and impressive sand dunes. With several beaches meeting the Blue Flag standard you are certain to never be far away from a great day out at the beach. The miles of beaches are great for swimming, exploring rock pools and all sorts of beach fun. There are plenty of water activities to be enjoyed from sub-aqua, sailing, diving, rowing, canoeing, land yachting and surfing. Go dolphin or whale watching or relax with the many

boat experiences and cruises available. If you enjoy the great outdoors, there's no better place for a holiday or a day out. There's so much to see and do!



The Blue Flag Programme

The Blue Flag is an international award for beach excellence. It is presented to beaches which have excellent water quality, which provide a range of services and visitor facilities, and which meet other specified criteria including environmental management, litter control and education.

Visiting



Contact

For up-to-date listings of current Blue Flag Beaches visit www.blueflagireland.org



SatNav: Latitude/Longitude Mayo

Clare Island: 53.8003, -9.9521
 Elly Bay: 54.1612, -10.0838
 Mullaghroe: 54.1431, -10.0701
 Silverstrand Dugort: 54.0123, -10.0178
 Keem: 53.9666, -10.1936
 Keel: 53.97186, -10.0736
 Dooga: 53.9213, -10.0252
 Mulranney: 53.8999, -9.7759
 Carrowmore: 53.7697, -9.8211
 Ross Killala: 54.2326, -9.1980

Sligo

Rosses Point: 54.3093, -8.5720



The Jackie Clarke Collection

Ballina, Co. Mayo

The award winning Jackie Clarke Collection—one man, 100,000 items—spanning 400 years of Irish history. Located in a restored 19th century bank in the centre of Ballina with a newly designed walled garden. Special features of the attraction include a memory booth where you can record your own memories and interactive touch-screens throughout. Suitable for all ages.



Visiting

Contact

The Jackie Clarke Collection
Pearse Street, Ballina
Co. Mayo, F26 A368
Tel: 096-73508
clarkecollection@mayococo.ie
www.clarkecollection.ie

SatNav: Latitude/Longitude
54.1150, -9.1531

Opening Times

Tues to Sat, 10:00–17:00h
Specialist tours can be booked in advance

Information

Entrance is located at the side of the building on Walsh Street

Parking

Street parking pay £ display
Coach parking available

The Father Peyton Centre

Attymass, Ballina, Co. Mayo

Commemorating 'The Rosary Priest'

The Father Peyton Memorial Centre is dedicated to the life of Venerable Patrick Peyton, a local man who became known worldwide as 'The Rosary Priest'.

Discover how this humble priest harnessed the power of Hollywood to motivate and inspire the movie stars, who put their considerable influence behind his simple message 'The Family that Prays Together Stays Together'.

He recognised the potential of future greats giving George Lucas of Star Wars fame and James Dean their first



film credits in his Hollywood studio 'The Family Theatre'.

The centre is nestled at the foot of the scenic Ox Mountains and surrounded by lakes and the River Moy, which is beautifully maintained by the local angling association. Tourist Accommodation and Self-Guided Loop walks available.

Visiting

Contact

The Father Peyton Centre
Attymass, Ballina
Co. Mayo, F26 X884
Tel: 096-45374
info@fatherpeytoncentre.ie
www.fatherpeytoncentre.ie

Location

10km south of Ballina, at the foot of the Ox Mountains

SatNav: Latitude/Longitude
54.0499, -9.0841

Opening Times

All Year: Mon to Fri 09:30–17:30h
Apr to Sept: Sat & Sun 12:00–17:30h

Admission Rates

Free Entry
Guided Tour £ Video €4

Information

Souvenir & Book Shop
Dining Room, Free WiFi
Wheelchair accessible

Parking

Free car parking



Ballina, Co. Mayo

Ballina is a haven for fishing, sea-angling and golf, or enjoy a quiet stroll in the peaceful surrounds of the 200 acre Belleek Woods close to the River Moy.



Céide Fields

Ballycastle, Co. Mayo

A Stone Age Monument

Beneath the wild boglands of North Mayo lies the Céide Fields, covered by a natural blanket bog with its own unique vegetation and wildlife. Consisting of field systems, dwelling areas and megalithic tombs, the Céide Fields is the most extensive Stone Age monument in the world.

The stone walled fields, extending over thousands of acres are almost 6,000 years old, the oldest known in the world.

The Visitor Centre has won several awards, including the Gold Medal for architecture. It is located beside some of



the most spectacular cliffs and rock formations in Ireland and a viewing platform is positioned on the edge of the 110m-high cliff.

Visitors are advised to wear weather protective clothing and footwear suitable for walking on uneven terrain.



Visiting



Contact

Céide Fields
Ballycastle, Co. Mayo, F26 PF66
Tel: 096-43325
ceidefields@opw.ie
www.heritageireland.ie



Location

8km west of Ballycastle on R314



SatNav: Latitude/Longitude
54.3051, -9.4569



Opening Times

Mar 13 to May 31
Daily 10:00–17:00h
Jun 01 to Sept 30
Daily 10:00–18:00h
Oct 01 to Oct 28
Daily 10:00–17:00h
Last tour 1 hr before closing



Admission Rates

Adult €5, Senior/Group €4
Child/Student €3
Family €13



Information

Leaflets available in English, Irish, French & Italian



Parking

Parking available



Achill Island

Achill Island, Co. Mayo

Activities, Festivals & Events for all the family



Achill, on the West Coast of Ireland offers the visitor spectacular views, natural landscapes and several Blue Flag beaches.

The Great Western Greenway offers cyclists and walkers amazing scenery on this fantastic new route, 42km the longest off-road walking and cycling

trail in Ireland from Achill to Westport.

Achill's activities include: surfing, kayaking, sailing, horse riding, scuba diving, kite surfing, abseiling, climbing, hillwalking, swimming, fishing/angling, golf, cycling and much more.

If you want relaxation, this is the place for painting, photography, garden tours and island trips, craft and art centres/galleries, spiritual/health and sport workshops.

Visit www.achilltourism.com for information for all festivals and events throughout the year.



Visiting



Contact

Achill Tourism
Achill Island, Co. Mayo, F28 W9N7
Tel: 098-20400
info@achilltourism.com
www.achilltourism.com



Location

N59 into Mulranny, R319 onto Achill Island



SatNav: Latitude/Longitude
53.9521, -9.9961



Opening Times

Year round Mon to Fri 09:00–17:30h
£ Sat 10:00–17:00h



Information

A range of accommodation, restaurants, cafés & bars



Parking

Free on-site parking for cars & coaches



O'Malley Ferries Clare Island and Inishturk Island

Louisburgh, Co. Mayo



Offering a warm welcome



O'Malley Ferries is a family-run business operating to Clare Island and Inishturk Island for generations.

Clare Island:

The trip takes 10 minutes on a fast ferry, the True Light. The island has much to offer with its natural beauty, majestic cliffs, scenic walks and its beautiful

golden beach. The island boasts many historical buildings including the castle of Grace O'Malley (Granuaile) and the Cistercian Abbey.

Inishturk:

The trip to Inishturk takes 45mins on a 97 passenger ferry, Naomh Ciaran II, allowing sufficient

time to capture the panoramic views of the coastline. Inishturk is a haven of peace and beauty steeped in history. The varied terrain, endangered flora and traditional ways make it the perfect getaway from everyday stress and hustle.

Visiting

Contact

O'Malley Ferries
Roonagh Pier, Louisburgh, Co. Mayo
Tel: 098-25045
086-887 0814
087-660 0409
enquiry@omalleyferries.com
www.omalleyferries.com

Location

Ferry departs from Roonagh Pier, 30 mins from Westport. 1 km from Louisburgh turn right and continue to the end of the pier

SatNav: Latitude/Longitude
53.7618, -9.9037

Sailing Times

Call or check online for sailing times
All sailings are subject to weather and other conditions

Ferry Rates

Tickets can be purchased online at www.omalleyferries.com or at the ticket office at Roonagh Pier
Please phone for best family and group rates

Parking

Free parking in the large car park at Roonagh Pier



Inishturk Island

Co. Mayo



Island of the Wild Boar



Inishturk is a small, beautiful island located 9 miles off the west coast of Mayo. It rises boldly from the wild North Atlantic in wall-like cliffs to the northwest and steep hills to the north. Only 5km by 2.5km in size, the island offers plenty to

do and see; hill walking, scuba diving, angling, fishing, swimming and boat trips to neighbouring islands. Historical places of interest include: Port An Dun, the remains of a 9th Century fort; The Old Church, dating back to the 16th Century; The

Present Graveyard; and The Signal Tower, rising 722ft above sea level. Community Club open daily May to September, where during summer weekends you can enjoy 'ceol agus craic' with some of the finest musicians in Ireland.

Visiting

Contact

Inishturk Island
Co. Mayo
www.inishturkisland.com

Location

Access to the island is by ferry and takes about 50 minutes
www.clareislandferry.com
www.clareislandfastferries.com

SatNav: Latitude/Longitude
53.7040, -10.1135

Opening Times
Open all year

Information

Loop walks, sandy beaches & bird watching, make this place an artists paradise



Westport Cruises

Westport, Co. Mayo



Discover the World Famous Clew Bay

Daily 90 minute cruises explore the world famous Clew Bay; its 365 islands, thriving seal colony, sites of disaster and battle, Inishgort Lighthouse, the holy mountain of Croagh Patrick & John Lennon's Island (an island hideaway which John Lennon of the Beatles owned & frequented).



Modern passenger ship has all modern amenities, with a 50 seater heated lounge with panoramic windows from which to take in the sights. Alternatively you can grab some binoculars and view from the

upper outdoor deck (seating available upstairs too!)

Clew Bay was home to the infamous Pirate Queen Grace O Malley. Westport Cruises explores the rich history of this formidable woman.

Visiting



Contact

Westport Cruises
Westport Harbour
Westport, Co. Mayo, F28 KW65
Tel: 098-39192 / 087-606 6146
info@westportcruises.com
www.westportcruises.com



Location

Located at Westport Harbour / Westport Quay within Westport Town. It's a 5 minute drive from Westport Town Centre



SatNav: Latitude/Longitude
53.8021, -9.5561



Sailing Times

Daily Sailings from Apr 01 to Oct 31
Sailing Times available on website



Admission Rates

Adult €20, Senior/Student €15
Child (5-17 yrs) €10, US Free
Family (2+2) €45, Family (2+3) €50
Book online at
www.westportcruises.com



Information

90 Minute Cruise, Guided Commentary, Bar, Café & Toilets Onboard, Indoor & Outdoor Seating



Parking

On-site parking available for both cars & coaches



Westport House

Westport, Co. Mayo

#DiscoverFamilyTime #DiscoverStories

Create memories you'll all treasure at Ireland's most beautiful historic home and estate. It is the perfect destination for a short break whether you're interested in history, walks, gorgeous gardens or family fun. Visitors are welcome to enjoy the stunning grounds for FREE.



The Pirate Adventure Park delivers hours of fun for kids under 12 years with The Pirate Queen's Ship (swinging ship ride), Pirates Plunge (pictured), Kiddie Zipwire, Treasure Island Express and Westport House Train, the Giant Swan Pedal boats, Cannon Ball Run slide, Pirates Den (indoor soft play area), Jump Around and Mini Ferris Wheel, Vortex

Tunnel, Playground, Disc Golf and indoor Tiny Town.

Stay onsite in the 4 star Hotel Westport or 3 star Caravan & Camping Park. Or why not hire a Bell Tent for glamping?

#DiscoverMagicalMemories when you

#DiscoverWestportHouse

Visiting



Contact

Westport House
Westport, Co. Mayo, F28 TY45
Tel: 098-27766
info@westporthouse.ie
www.WestportHouse.ie



Location

When driving, follow signs to Westport Quay. If walking from town centre, via the NEW pedestrian gate on Church Lane (opposite the new Sentinel statue near the Octagon)



SatNav: Latitude/Longitude
53.8055, -9.5398



Opening Times

Westport House open daily from March 01. Pirate Adventure Park open when the primary schools are closed. Please check www.WestportHouse.ie before you travel



Admission Rates

Westport House:
Adult €13.50, Child €6.50
Pirate Adventure Park: Adult €22.50
Child €22.50, Family of four €70
5% discount on www.WestportHouse.ie
25% off £ **NEXT DAY FREE** when you stay in Hotel Westport OR the Caravan & Camping Park



Parking

Free parking available



National Museum of Ireland – Country Life

Castlebar, Co. Mayo



Our past made present with the National Folklife Collection

Set in the spectacular grounds of Turlough Park House, the award-winning **National Museum of Ireland – Country Life** is a leading visitor attraction in the western region.

The museum houses the **National Folklife Collection** and provides a fascinating insight into the daily lives of people in rural Ireland, from 1850 to 1950.

A wide range of exhibits and interactive displays appeal to young and old alike. Explore our agricultural and maritime past, traditional trades and crafts, fashion and textiles, religion, festivals, beliefs, and more.

The museum galleries, with no admission fee, are spread over four floors in a modern and architecturally unique building. Next door, visitors can also see **Turlough Park House** – the 19th century, Gothic style ancestral home of the Fitzgerald Family.

Enjoy coffee or lunch at **Brambles Café** or browse Irish crafts in the Museum Shop.

Cycling to the Museum
Cycle along the Great Western Greenway cycle route from Castlebar to the Museum.

Bicycle parking facilities available in the Museum grounds.



Ideal for family visits

There is lots for families to do at the Museum. Play and explore in the award-winning woodland playground located in the grounds of Turlough Park or take a fun, family trail through the exhibition galleries. Visit the dress-up station to try on clothes from the 1800s and see if you can guess the object at the handling station! The site is also overlooked by an ancient round tower.

Visiting



Contact

National Museum of Ireland
– Country Life, Turlough Park
Castlebar, Co. Mayo, F23 HY31
Tel: 094-903 1755
tpark@museum.ie
www.museum.ie/country-life



Location

Located in Turlough village, off the N5. Just 8km from Castlebar



SatNav: Latitude/Longitude

53.8840, -9.2125



Opening Times

Tues to Sat: 10:00–17:00h
Sun & Mon: 13:00–17:00h
Closed Christmas Day and Good Friday



Admission Rates

Free admission



Information

Museum shop selling books, gifts, craftware and locally produced products
Museum Café offering meals, snacks, hot & cold drinks and free WiFi



Parking

Free car parking is available on-site



Jeremiah Higgins

Claremorris, Co. Mayo

Ireland's Oldest Shop®



Step back in time when you visit Jeremiah Higgins; Ireland's Oldest Shop®. What started in 1820 as a producer and purveyor of leather goods, soon became a tailor's, draper's and even a general goods store. This living history is continued today by the sixth generation

of the Higgins family who make it their mission to preserve their family legacy. Historic documents are on display alongside original antiques. Family photos are hung over aged glass-clad countertops. The "Gentleman's Dressing Mirror", reflecting tales of past and present stands upon centuries-old floorboards; whose creaks tell stories of their own. Now the shop stands as it was in the past and sells an eclectic mix of Irish goods, quirky gifts and unusual items.

Visiting



Contact

Jeremiah Higgins
Main Street, Claremorris
Co. Mayo, F12 V3A8
Tel: 094-937 1000
jeremiah@jeremiahhiggins.com
www.jeremiahhiggins.com



Claremorris

Location

In the heart of Claremorris on the main street



SatNav: Latitude/Longitude
53.7194,-9.0010



Opening Times

Mon to Wed 11:00–18:00h
Fri & Sat 11:00–18:00h
Closed Thurs & Sun



Information

The shop sells an eclectic mix of Irish goods, quirky gifts and unusual items



Parking

Pay and display on-street parking



Clare Island Ferry— O'Grady's

Louisburgh, Co. Mayo



Clare Island's only all year round daily ferry service



Book online

www.clareislandferry.com

The O'Grady Family have been operating a service to Clare Island since 1880.

The "Pirate Queen" is named after the infamous 16th century Grace O'Malley (Granuaile), who lived on Clare Island during the course of her life as a "chief commander and director of thieves and murderers at sea".

The "Clew Bay Queen" licensed to carry 96 passengers takes 20 minutes to make the crossing and is the largest ferry on the Clare Island service. The "Sea Sprinter" is licensed to carry 35 passengers and takes 10 minutes to make the crossing.

The journey gives enough time to view and photograph a most spectacular coastline which includes Achill Island, the Nephin Mountains, Clew Bay, Croagh Patrick, Killary Harbour, Renvyle and Inishbofin.

Special trips to and from Inishturk and Achill Island can be arranged for groups.

For group activities on the island please visit the website www.clareislandadventures.ie

Visiting



Contact

Clare Island Ferry
Roonagh Point, Louisburgh
Co. Mayo, F28 W8P3
Tel: 098-23737, 086-851 5003
bookings@clareislandferry.com
www.clareislandferry.com



Roonagh Pt.

Location

Roonagh Quay is located on the R335, 8 km west of Louisburgh



SatNav: Latitude/Longitude
53.7617,-9.9038



Opening Times

Regular daily services year round from Roonagh Quay to Clare Island. Times vary and are subject to weather conditions. Please telephone or see website for details



Admission Rates

Purchase your tickets online to avail of online discount or book your tickets at bookings@clareislandferry.com



Parking

There is a large car park at Roonagh Point





**Galway
2020
Gaillimh** **European
Capital
of Culture**



GALWAY 2020 EUROPEAN CAPITAL OF CULTURE

See all the exciting
events happening
in Galway in 2020

Visit www.galway2020.ie



European Capital
of Culture



Rialtas na hÉireann
Government of Ireland



Comhairle Cathrach na Gaillimhe
Galway City Council



Comhairle Chontae na Gaillimhe
Galway County Council

The Sheep & Wool Centre

Leenane, Co. Galway

Learn about the sheep and woollen industry



The Sheep & Wool Centre is a visitor attraction situated in the heart of Connemara on the breathtaking Killary Harbour. The Centres mission is to foster awareness of the traditional sheep and wool-craft industry in the west of Ireland.

The museums focus is on the history of sheep and wool handcrafts with daily

demonstrations in carding, spinning and weaving. Watch how sheep's fleece is made into yarn and then woven into cloth.

A visit to the museum is by guided tour only and will answer all your woolly and sheepish questions!

The Sheep and Wool Gift Shop stocks everything from handcrafted scarves from the Museum and knitting yarn, to woollens and souvenirs, with prices to suit most pockets. The café on-site, Bia Blas specializes in home cooked food and baking.



Visiting



Contact

The Sheep and Wool Centre
Leenane, Connemara
Co. Galway, H91 P28K
Tel: 095-42323
info@sheepandwoolcentre.com
www.sheepandwoolcentre.com



Location

Leenane lies on the N59, Connemara's coastal scenic route Museum located in village centre



SatNav: Latitude/Longitude
53.5971, -9.6937



Opening Times

Mid Mar to Sept 09:30–18:00h
Oct 09:30–17:30h
Nov to Mid Mar Closed
Tour Times
Mon to Fri, Mar to Oct
10:00/12:00/14:00/16:00h
Sat & Sun (March closed)
Apr/May & Oct/Nov
12:00/13:00/14:00h
June/July/Aug
10:00/12:00/14:00/16:00h



Admission Rates

Adult €7, Student/Senior €5
Child €3, Family €17



Information

Gift shop, Café on-site



Parking

Free parking



Killary Adventure Company

Leenane, Co. Galway

Outdoor activity centre



Killary Adventure Company is located on the shores of the Killary Fjord. Offering a huge range of Land and Water adventure activities suitable for those aged 8 and over, this is a fantastic way to experience Connemara.

Kayak and explore the waters of Killary Fjord, scale to the top of the Climbing Tower or High Ropes Course with fabulous

panoramic views of the surrounding mountains as your reward. For something truly unique take on the Turf Challenge!

Activities are really popular with adults, families, kids, individual travellers and groups. For the kids check out our summer camps!

A Speed boat transfer to the Famine Walk operates in June/July & August with drop off/collection allowing you to walk the Famine trail.

Walk the Killary Coastal Park, a 2km looped walking trail, with food truck onsite.



Visiting



Contact

Killary Adventure Company
Leenane, Connemara
Co. Galway, H91 PY61
Tel: 095-43411
adventure@killary.com
www.killaryadventure.com



Location

60 mins from Galway, 35 mins from Westport and 30 mins from Clifden



SatNav: Latitude/Longitude
53.5942 -9.7675



Opening Times

Activities start at 10:00 and 14:00h



Admission Rates

1/2 Day: Child €35, Adult €52
Full Day: Child €52, Adult €95
Group and family rates available



Information

Located onsite:
Killary Adventure Centre | Hostel
Accommodation
The Killary Lodge | Nature Lodge
The Misunderstood Heron | Food Truck



Parking

Coach and car parking available



Delphi Resort

Leenane, Co. Galway



Delphi Resort is a 4* Resort set in the heart of the Delphi valley near Leenane.

Delphi Resort comprises of a 4* Hotel, Spa & Yoga Studio, Restaurant, Bar and Café as well as a 220—bedded Hostel.

The on-site Adventure Centre provides a wide variety of outdoor activities including Kayaking, Zipline, Surfing, Cycling and many more.

Be Part of the Adventure!

Visiting



Contact

Delphi Resort
Leenane, Connemara
Co. Galway, H91 DP08
Tel: 095-42208
info@delphiresort.com
www.delphiresort.com



SatNav: Latitude/Longitude

53.6219, -9.75434



Opening Times

Resort Open year round (except certain dates Dec & Jan). See website.
Adventure Centre Daily 09:00–18:00h



Admission Rates

Adult €27.50, Child (4–17 years) €20
Family (2+2) €85. Discounts available



Parking

Free car & coach parking

Blue Flag Beaches of Galway

Enjoy a day at the beach



Galway has an extensive coastline offering quality beaches and amazing views of the Atlantic Ocean. The miles of beaches available are great for swimming, walking, exploring rock pools, wind-surfing, kite-surfing and all sorts of beach fun.

The Blue Flag is an international award for beach excellence. It is presented to beaches, which have excellent water quality, which provide a range of services and visitor facilities,

and which fulfil other specified criteria including environmental management, litter control and education.

With Galway's extensive coastline you are certain to be never far from a great day out at the beach.

If you enjoy the great outdoors, there's no better place for a holiday. There's so much to see and do!

Visiting



Contact

For up-to-date listings of current Blue Flag Beaches please visit www.blueflagireland.org



SatNav: Latitude/Longitude

Traught: 53.1707, -8.9862
Inverin: An Trá Mór /Inverin: 53.2342, -9.4391
Trá an Dóilín /Coral Beach: 53.2498, -9.6302
Cill Muirbhígh (Aran)/ Kilmurvy: 53.1291, -9.7644
Salthill: 53.2632, -9.0703
Silver Strand: 53.2514, -9.1269



Kylemore Abbey and Victorian Walled Garden

Connemara, Co. Galway



Ideal destination for a day out

Originally built as a castle in 1867 and has been home to the Benedictine Nuns for the past 100 years. This Abbey and 1,000 acre Estate is steeped in history with tales of tragedy and romance, engineering initiatives, royal visits, spirituality and education.

Experience the Victorian atmosphere of the Abbey, Gothic Church and Head Gardener's House. Enjoy beautiful tree lined avenues, nature trails and lakeshore walks.

Explore the magical 6 acre Victorian Walled Garden where only Victorian varieties of flowers and vegetables are grown. Vegetables

and herbs from the garden are used in the café where traditional home cooked food is made to the recipes of the Benedictine nuns.

The Tea House by the Walled Garden is the perfect place to relax and enjoy the breathtaking views over the Connemara National Park. A great day out for all the family.



Visiting



Contact

Kylemore Abbey
Kylemore, Connemara
Co. Galway, H91 VR90
Tel: 095-52001
bookings@kylemoreabbey.com
www.kylemoreabbey.com



Location

Just 1 hour from Galway City



SatNav: Latitude/Longitude

53.5618, -9.8880



Opening Times

Estate: Jan € Feb 10:00-16:30h
Mar 10:00-17:00h
Apr to Jun 09:00-18:00h
July € Aug 09:00-18:30h
Sept € Oct 09:30-17:30h
Nov € Dec 10:00-16:30h



Admission Rates

Adult €15, Senior/ Student €10.50
Family with children aged >16 €30
with children aged 16-18 €40
Winter rates available from Nov



Information

Mitchell's Café and Garden
Tea House Contemporary and traditional home cooking and baking
Craft and Design Shop Crafts, gifts, handmade chocolates and Kylemore pottery



Parking

Free car parking with no time limits



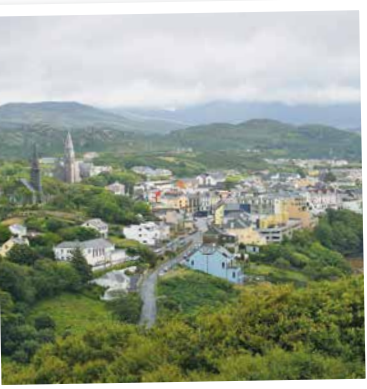
Clifden

Clifden, Co. Galway



The perfect base to explore Connemara

Nestled between the Atlantic Ocean, 12 Ben Mountains and preserved boglands, lies the town of Clifden on the Coast of Connemara. Enjoy breathtaking mountain scenery and beautiful rugged coastline. Lots to do with championship golfing, horse-riding, adventure centres, walking, cycling, hill walking, beaches, fishing, scuba diving, painting, national parks, abbeys, castle ruins and over 5,000 years of living history. Regarded as the capital of Connemara, it is the ideal base for touring the region or engaging in an outdoor holiday.



The Sky Road Tour Justifiably famous for the views it affords, the Sky Road route takes you up among the hills overlooking Clifden Bay and its offshore islands, Inishturk and Turbot Island.

Visiting



Contact

Clifden
Connemara
Co. Galway
www.discoverireland.ie



Location

On the N59 from Galway



SatNav: Latitude/Longitude

53.4889, -10.0207



Information

Great range of accommodation, restaurants, cafes and shopping available



Parking

On street parking available



Glengowla Mines & Working Farm Experience

Oughterard, Co. Galway



Discover the Hidden History of Connemara

Let the team at Glengowla Mines lead you on a journey of discovery of how lead and silver were mined from the roots of the Connemara Mountains in the 1800's. The constant dripping of water, the 'miners breath' and if you are brave enough—a moment of darkness will set the scene! Learn of the miners working conditions before the mines closed in 1865. Pan for gold at the gold panning station and keep any gems you find! Glengowla Museum has artifacts collected during the mines excavation & history on the area.

On the surface, the Powder Magazine, Blacksmith's Workshop and the Agent's Cottage have been restored and contain items rescued from the mine. A hand windlass

and a horse-gin have been constructed.

The mine is noted for its rare and beautiful octahedral crystals of fluorite and quartz. Pitch pine timbers believed to be brought back to the west of Ireland by the emigrant coffin ships are still intact in the mine today.

Discount on presentation of this booklet. 10% off Adult Ticket to mines only in 2019. T&C apply.



GLENGOWLA MINES

Family Farm Experience



Visiting



Contact

Glengowla Mines
Oughterard, Co. Galway, H91 PX22
Tel: 091-552 021
Mob: 087-252 9850
glengowlamines@eircom.net
www.glengowlamines.ie



Location

3km west of Oughterard village (20 mins drive from Galway, 40 mins from Clifden)



SatNav: Latitude/Longitude

53.4184, -9.3744



Opening Times

Mid Mar to Mid Nov 10:00–18:00h
Last tour 17:00h



Admission Rates

Adult €11, Senior/Student €10.50
Child €5, Family €29
Cater for school tours and groups
Additional charge applies for turf cutting and sheep dog herding demonstrations



Information

Gift Shop

Parking

Free Coach & Car Parking at the Visitor Centre



Glengowla Farm

Glengowla is also a working farm where you can see Connemara ponies, meet Bob the sheep dog, pet the lambs and for advanced group bookings sheep dog herding demonstrations and turf cutting demonstrations are available.

Advanced bookings are required. Contact Keith 087-252 9850.



Aughnanure Castle

Oughterard, Co. Galway

Aughnanure Castle lies in picturesque surroundings close to the shores of Lough Corrib. The castle is a particularly well-preserved example of an Irish tower house. Visitors will find the remains of a banqueting hall, a watch tower, an unusual double bawn, bastions and a dry harbour. Restricted access to castle grounds for visitors with disabilities.



Visiting



Contact

Aughnanure Castle
Oughterard, Co. Galway, H91 PX20
Tel: 091-552 214
aughnanurecastle@opw.ie
www.heritageireland.ie



SatNav: Latitude/Longitude

53.4188, -9.2754



Opening Times

Feb 27 to Oct 21 Daily 09:30–18:00h
Oct 22 to Nov 04 Daily 09:30–17:00h
Last admission 16:15h
Nov 05 to Nov 15 Daily 09:30–16:00h
Last admission 15:15h



Admission Rates

Adult €5, Senior/Group €4
Child/Student €3
Family €13



Parking

Car & coach parking

Ionad Cultúrtha an Phiarsaigh, Conamara

Ros Muc, Co. Galway



This state-of-the-art visitor centre celebrates the culture, and landscape of the Connemara Gaeltacht. The area's unique heritage attracted Patrick Pearse, leader of the 1916 Rising, to spend his summers here in the early 20th century. Visitors can explore the interactive exhibition, and then take a short stroll through the landscape, up to Pearse's original cottage, which he had built in 1909.



Visiting



Contact

Ionad Cultúrtha an Phiarsaigh,
Conamara,
Ros Muc, Co. Galway, H91 DW9A
Tel: 091-574 292
tanphiarsaigh@opw.ie
www.heritageireland.ie



SatNav: Latitude/Longitude

53.3863, -9.6200



Opening Times

Summer, Daily 09:30–18:00h
Winter, Daily 09:30–16:00h



Admission Rates

Adult €5, Senior/Group €4
Child/Student €3
Family €13



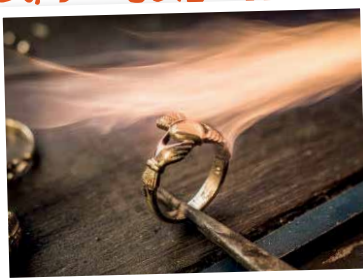
Parking

Car & Coach parking available

Legend of The Claddagh Ring

Galway City

Legend Of The Claddagh Ring visitor centre is a family-friendly tourist attraction located in the heart of Galway city. Come along and watch The Authentic Claddagh Ring being made in the onsite cottage workshop. Learn about the origins of Galway's Iconic Claddagh ring dating back over 300 years and find out how it is worn. Watch a short movie about the adventurous voyage of Richard Joyce—legendary creator of the Claddagh ring.



Visiting



Contact

Legend of the Claddagh Ring
26 Shop Street
Galway, H91 E653
claddaghlegend@gmail.com
www.claddaghlegend.com



SatNav: Latitude/Longitude

53.2725, -9.0534



Opening Times

Open Year Round
Daily Mon to Sat 09:00–18:00h
Sun & B/Hols 11:00–18:00h



Admission Rate

Free admission



Parking

Paid on-street parking within 5 minutes of the shop

Great Escape Rooms

Galway City

Can you beat the clock?



TripAdvisor Rated #1 FUN THING to do in Galway.

Are you looking for an engaging and exciting activity in Galway? Situated in the heart of the City Centre, Great Escape Rooms is the perfect activity for a rainy day that will appeal much

more than the usual bus tour or museum. Create memories you will treasure with your family and friends in an hour of excitement, challenge, fun, laughter and team work. Do you and your group have what it takes to beat the clock by solving the puzzles, finding the clues and uncovering the mysteries that lie within the Escape Room? Offering a selection of rooms to suit all levels, and if you're really looking for something different, why not try the new Virtual Reality Escape Games? Book Now!

Visiting



Contact
Great Escape Rooms
27 Upper Abbeygate Street
Galway City, H91 TN66
Tel: 091-536 979
info@greatescaperooms.ie
www.greatescaperooms.ie



Location
Follow signs to city centre Park close to Shop Street 30 second walk from Shop Street



SatNav: Latitude/Longitude
53.2739, -9.0534



Opening Times
Open 7 days a week. Times vary between 10:00h and 23:30h Pre-booking is recommended



Admission Rates
Adult from €17, Child/Student from €15. Large group discounts. Use Promo Code: ESCAPES for a €5 group discount (not applicable with other discounts)



Information
Suitable for all ages from 5 years (with adult guidance) and upwards Min. group size: 2



Parking
On-street and ample public parking available nearby



Galway Atlantaquaria

National Aquarium of Ireland

Salthill, Galway City



Ireland's native fish at Galway Atlantaquaria

Visit Galway Atlantaquaria, Ireland's largest native species aquarium at the heart of the Wild Atlantic Way. Located in Salthill beside the beautiful Galway Bay and the world famous 'Salthill Promenade'.

Galway Atlantaquaria is designed to show the diversity of marine species from all over Ireland and hosts 100s of marine species from Ireland's rivers, shores and ocean.

The Aquarium hosts two floors of exhibits that reflect the maritime history of Galway; highlights include a 60 foot Fin Whale skeleton, Bearna Log boat (dugout canoe) Red Deer Antlers and Ui Breasail (Hy Brasil) boat.



Featured animals include Native Irish sharks, Jellyfish, Conger eels, Clownfish, Bass and much more. With regular tours and interactive feeding times throughout the day a visit to the aquarium is an authentic, family friendly and educational experience. Galway Atlantaquaria is a fully accredited member of European Association of Zoos and Aquaria (EAZA).

Visiting



Contact
Galway Atlantaquaria
The Promenade, Salthill
Galway City, H91 T2FD
Tel: 091-585 100
info@nationalaquarium.ie
www.nationalaquarium.ie



Location
Located along the Salthill promenade overlooking Galway Bay



SatNav: Latitude/Longitude
53.2599, -9.0737



Opening Times
Daily 10:00-17:00h
Last admission 45 mins before closing



Admission Rates
Adult €13, Family (2+2) €35
Senior €9.50, Student €10
Child €8.50, extra child €4.50
Child (U2) Free. Rates are subject to change. Group Rates also available
Admission fee includes all day entry Get your hand stamp



Information
Ground & Co Café, The Lighthouse Gift shop and Papa Rich Restaurant all on-site



Parking
Free car parking





Trad on the Prom

Salthill, Galway

WILD ATLANTIC WAY
SUI AN ATLANTAIGH FHÁIN



Ireland's Number 1 Music, Song & Dance Experience

Performers who have captivated audiences in extraordinary and groundbreaking productions such as 'Riverdance', 'The Chieftains' and 'Lord of the Dance' have gathered together on ONE STAGE to present an unforgettable entertainment experience. It's a truly remarkable experience suitable for all ages and nationalities.



Music: Trad on the Prom showcases the amazing talents of legendary musician **Máirín Fahy**, featured soloist with Riverdance. Máirín is joined on stage by **Gerard Fahy** (musical director and composer of 'Lord of the Dance') on the uilleann pipes, whistles and bouzouki, multi-instrumentalist **Yvonne Fahy** on accordion and bodhrán, producer and

host **Chris Kelly** on guitar and concertina supremo **Padraig Rynne** together with the exceptionally gifted keyboard player **Colm Henry**.

Dance: The show features a stunning line-up of well renowned and World champion Irish dancers including **Claire Greaney** (Six-time World Champion), **Fergal and Cathal Keaney** (lead Lord of the Dance), **Colm Conneely, Anne Marie Keaney, Aoife NiShé** together with **Ronan O'Connell** and **Dara Kelly** (winners of An Ril Deal 2017).

Song: Singers include Eurovision star **Marc Roberts**, Multi- AIMS winner **Sean Costello** and The Chieftains vocalist **Yvonne McMahon, Don Stiffe** and **Michelle Lally**.



Visiting



Contact

Trad on the Prom
Leisureland Theatre
Salthill, Galway, H91 KT3V
Tel: 091-582 860
bookings@tradontheprom.com
www.tradontheprom.com



Location

The Promenade, Salthill, overlooking Galway Bay, just 2km from Galway city centre



SatNav: Latitude/Longitude
53.2592, -9.0823



Opening Times

May 10 to Oct 04
Tues, Thurs & Sun: 20:30h



Admission Rates

Adult from €32pp
Student/Senior from €29pp
Family from €90



Parking

Free Parking



"The music and dancing was incredible. If you get the chance you have to go!"
"Excellent show with amazingly talented musicians and dancers"

Book online at
www.tradontheprom.com

Simply the Best Irish Show of the Year

Celebrating 16 years and ranked by TripAdvisor as the number 1 attraction in Galway for the last twelve years, Trad on the Prom is dubbed "Sheer Brilliance" by the Irish Times and epitomises the very best of Traditional Irish Culture. Don't miss it!

Aran Island Ferries

Connemara, Co. Galway



Passenger Ferry to the Aran Islands

Offering an escape to a traditional Irish culture, Aran Island Ferries sail year-round to the Aran Islands from Ros a' Mhíl port in Connemara, along the Wild Atlantic Way.



Ireland's largest domestic ferry company is owned and operated by the O'Brien family, who began trading turf to the Aran Islands in the 1800s and now carry passengers on four state-of-the-art vessels with a capacity of up to 297.

Passengers can enjoy bar service and refreshments onboard their 40 minute journey (average sailing time), while admiring the rugged landscape and views of Galway Bay.

Parking is available at the pier or passengers can take a shuttle bus departing daily from Galway city.

Dating back some 350 million years, the Aran Islands offer visitors a glimpse into a way of life, distinct from mainland Ireland.

Get a 10% discount when booking a return journey online.

Visiting

Contact

Aran Island Ferries
Ros A' Mhíl Pier, Connemara
Co. Galway, H91 FXA6
City Office located at
37-39 Forster Street
Galway City, H91 FXA6
Tel: 091-568 903
info@aranislandferries.com
www.aranislandferries.com

Location

Ferry is located at Ros A' Mhíl Pier
38km from Galway. City Office is on
Forster Street in Galway City Centre

SatNav: Latitude/Longitude

Ros A' Mhíl Pier: 53.2655, -9.5592
Forster Street: 53.2753, -9.0463

Sailing Times

Daily sailings all year round
Office open 08:30-17:30h
Please contact office for sailing
times

Admission Rates

Excellent individual, family, group
rates and online discounts available

Information

Tea / Coffee / Bar Facilities onboard

Parking

Parking available at port



Aran Islands

Co. Galway

The Islands of Saints and Scholars

Located just off Galway Bay. A real Irish experience awaits, where the locals speak Irish as well as English in a stunning setting of Celtic churches, forts and monuments of historical significance including the World Heritage site



Dun Aonghasa which is set on a dramatic 300 ft cliff edge. Inis Mór is the largest of the islands and home to Dun Aonghasa. Inis Meain & Inis Oirr Islands also offer an unspoilt experience of traditional Irish culture, each with their own distinct atmosphere and character. The

best way to see the islands is on foot or by bicycle. Bike hire is available on the islands. Horse riding and carriage tours also available. The pace of life is slow and a profound sense of peace accompanies you through the narrow winding roads and grassy lanes to pristine beaches and craggy shores.

Visiting

Contact

Aran Islands
Galway Bay
Co. Galway
www.aranislands.ie
www.aranisland.info

Location

Aran Islands are off the west coast
of Ireland
Rossaveal H91 W9K1
Inverin H91 DC80

SatNav: Latitude/Longitude

Aran Islands 53.1121, -9.6701
Rossaveal 53.2663, -9.5603
Inverin 53.2322, -9.4695

Information

Access to the Islands is by ferry
from Rossaveal or Doolin, and by air
from Inverin in Connemara. A range
of accommodation, restaurants,
pubs and shops are available on
the islands





Portumna Castle & Gardens

Portumna, Co. Galway

An impressive semi-fortified house

Portumna Castle and Demesne occupy a magnificent location on the shores of Lough Derg on the River Shannon. Although gutted by fire in 1826, the Castle is still an imposing example of Irish architecture in the early 17th Century. The imposing façade of the castle faces north and is approached

by a long avenue and formal gardens. The ground floor of the castle is open to the public and houses an exhibition on the history and restoration of the building. A virtual reality DVD presentation adds to the exhibition by bringing the story to life.



Visiting



Contact

Portumna Castle & Gardens
Portumna, Co. Galway, H53 YK27
Tel: 090-947 1658
portumnacastle@op.wie
www.heritageireland.ie



Location

Portumna town—adjacent to lake, the River Shannon and Portumna Forest Park.



SatNav: Latitude/Longitude
53.0929, -8.2185



Opening Times

Mar 26 to Sept 30
Daily 09:30–18:00h
Oct 01 to Nov 04
Daily 09:30–17:00h
Groups on Wed & Thurs by prior booking. Last admission 45 mins before closing



Admission Rates

Adult €5, Senior/Group €4
Child/Student €3, Family €13



Parking

Car & coach parking close to site



Athenry Castle

Athenry, Co. Galway

Original 13th Century Battlements

Athenry—the most notable medieval walled town surviving in Ireland, owing its foundation to Meiler de Bermingham who built his castle there c.1250. The castle consists of a three storey tower with parts of the original enclosure wall still surviving today. The only original entrance was at first floor level and would have been reached by an external wooden stairs similar to the present reconstruction. This gave direct access to the hall, the official and ceremonial reception room of the castle, where the Lord received his guests. Today visitors to the castle can visit the audio-visual room and enjoy an exhibition with guided tours available on request.



Access to ground floor of castle for visitors with disabilities. Leaflet/Guide Book available in French & German.

Visiting



Contact

Athenry Castle
Athenry, Co. Galway, H91 PX20
Tel: 091-844 797
athenrycastle@op.wie
www.heritageireland.ie



Location

In the centre of Athenry town (Heritage Town)



SatNav: Latitude/Longitude
53.3001, -8.7446



Opening Times

Mar 26 to Sept 30
Daily 09:30–18:00h
Oct 01 to Nov 04
Daily 09:30–17:00h
Last admission 45 mins before closing



Admission Rates

Adult €5, Senior/Group €4
Child/Student €3
Family €13



Parking

Car & coach parking available close to site



Burren Nature Sanctuary & Café

Kinvara, Co. Galway

Welcome to the magic!

Experience the magic of the Burren, on the Wild Atlantic Way, just outside Kinvara 'the most beautiful village in Ireland'. From the Disappearing Lake to the Fairy Woodland and friendly farm pets, a visit to the Burren Nature Sanctuary leaves you uplifted, inspired and recharged.

Learn about the unique biodiversity of the Burren along the interpretive trail (Free 10 stop audio tour). Visit the Botany dome, the Orchid meadow, the shattered Limestone Pavement, meet and feed friendly farm pets or even pre-book a walk with



Emilia the Juliana pig! Watch the 15-minute 'Introduction to the Burren' Movie and relax in the award-winning Sanctuary café. Browse local crafts in the AVOCA gift shop. Indoor and outdoor play facilities.

Visiting



Contact

Burren Nature Sanctuary & Café
Cloonasee, Kinvara
Co. Galway, H91 PTK7
Tel: 091-637 444
hello@burrennaturesanctuary.ie
www.burrennaturesanctuary.ie



Location

1km from Kinvara. 10mins walk
Regular Buses Galway-Kinvara



SatNav: Latitude/Longitude
53.1298, -8.9280



Opening Times

Feb to Mar: Wed to Sun
10:00-18:00h
Apr to Aug: Daily 10:00-18:00h
Sep to Dec: Wed to Sun
10:00-18:00h



Admission Rates

Adult €8, Senior €6
Child (U4) €6, Child (4yrs+) €11
Family (2+3) €37



Information

Burren Walk, Adventure Playground
Burren Movie, Free 10 stop audio
guide, Avoca Gift Shop, Café
Groups welcome



Parking

Free on-site parking for cars and
coaches



OPW

BUY AN OPW HERITAGE CARD & EXPLORE IRELAND'S WONDERFUL HERITAGE



Jerpoint Abbey

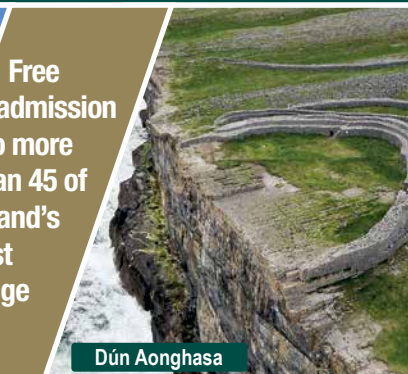


Castletown House



Donegal Castle

Free admission to more than 45 of Ireland's finest heritage sites



Dún Aonghasa

Unlimited access for up to one year

€40

Adult

€30

Senior

€10

Child/Student

€90

Family

Heritage Cards can be purchased at participating heritage sites

by phone: 01-647 6592 / Lo Call 1850-600 601

Find us on Facebook



Full details: www.heritageireland.ie



Saint Mary's Cathedral

Bridge Street, Limerick City

Standing on King's Island, overlooking the River Shannon, Saint Mary's Cathedral is the oldest building in Limerick. The cathedral is open daily and is still used today for its original purpose, as a place of worship and prayer. The cathedral offers a rich experience of treasures and Light of Life signs will guide you round and offer information about what you see. No trip to the city is complete without visiting this historic building.



Visiting



Contact

Saint Mary's Cathedral
Bridge Street, Limerick City, V94 E068
Tel: 061-310 293
info@saintmaryscathedral.ie
www.SaintMarysCathedral.ie



SatNav: Latitude/Longitude
52.6686, -8.6233



Opening Times

Open Daily Mon to Fri 09:00–17:00h
Sat 09:00–16:00h
Sun 12:30–16:00h
Last admission 30 mins before closing



Admission Rates

Adult €5, Student €3.50
Child (0–10yrs) Free



Parking

On-site & some street parking
Public car parks near by

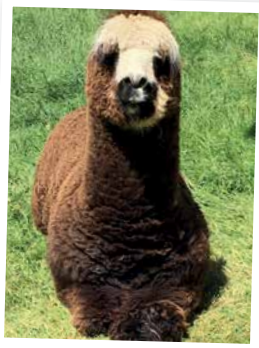
Stonehall Wildlife Park

Kilcornan, Co. Limerick

Stonehall hosts a wide variety of rare & domestic animals, from Llamas, Alpacas, Ostriches, Emus, Rheas and a large variety of Parrots & Birds of Prey.

Enjoy the nature trail walk.

Caters for all weather conditions. Visit the indoor pets corner, bring your picnic and enjoy the indoor play area where there are a variety of go-karts and bouncy castles for the children.



Visiting



Contact

Stonehall Wildlife Park
Curraghchase, Kilcornan
Co. Limerick, V94 D7E8
Tel: 061-393 940
info@stonehallvisitorfarm.ie
www.stonehallwildlifepark.ie



SatNav: Latitude/Longitude
52.6080, -8.8680



Opening Times

April, May, June, Sept, Oct
Sat & Sun 11:00–18:00h
July & Aug. Open 7 days a week
Mon to Sat 11:00–18:00h
Sun 11:00–18:00h
Nov to Mar closed
Open Dec for Santa's Grotto



Admission Rates

Adult €9, Child €9, Family rate available
Separate rate for Santa's Grotto



Parking

Parking facilities for coaches & cars

Foynes Flying Boat & Maritime Museum

Foynes, Co. Limerick

Discover the era of transatlantic passenger flights, the invention of Irish Coffee, and the maritime history of the River Shannon. Home to the world's only full-size replica of a B314 flying boat. New Maureen O'Hara Exhibition preserves the memory of this famous movie star. Her husband Charles Blair flew boats into Foynes from 1942 to 1945. Enjoy lunch or afternoon tea in nostalgic 1940s style in O'Regan's restaurant.



Visiting



Contact

Foynes Flying Boat & Maritime Museum
Foynes, Co. Limerick, V94 T6C1
Tel: 069-65416
info@flyingboatmuseum.com
www.flyingboatmuseum.com



SatNav: Latitude/Longitude
52.6115, -9.1097



Opening Times

Mid-Mar to Mid-Nov 09:30–17:00h
June, July & Aug 09:30–18:00h
Open Daily on above dates
Last entry 1 hour before closing



Admission Rates

Adult €12, Child €6 (Under 5 free)
Family(2+4) €30, Senior/Student €10
Group Rates Available



Information

Visit the New Irish Coffee Lounge
1940s style Restaurant (O'Regan's)
Gift shop carrying an exciting range of unique giftware

SPECIAL Discoveries

in the West

Great walking trails to explore the West of Ireland



Ards Forest Park – Heritage Trail

Creeslough, Co. Donegal.

Sat Nav 55.1457, -7.9286

Moderate 5km walking trail between Creeslough and Dunfanaghy. See four ring forts together with a mass rock and a holy well. One of nine trails in Ards Forest Park.

www.coillte.ie



Benbulbin Looped Walk

Gortarowey, Co. Sligo.

Sat Nav 54.3587, -8.5070

Easy 5.5km walking trail suitable for all ages. Walk the forest road for panoramic views of Ben Bulbin table top mountain and Sligo and Donegal bays. Great for families.

www.sligowalks.ie



Bothar na Naomh

Cloone, Co. Leitrim.

Sat Nav 53.9467, -7.7889

Easy 3.75km walking trail starting and finishing in the village of Cloone. Ideal for families. Quiet rural landscape and regenerated cutaway bog.

www.irishtrails.ie



Ballyconnell – Canal Loop

Ballyconnell, Co. Cavan.

Sat Nav 54.1169, -7.5806

Easy to moderate 6km walking trail starting and finishing in Ballyconnell Bridge car park. Follow sandy roads, woodland tracks and riverbank paths.

www.irishtrails.ie



Erris Head Loop

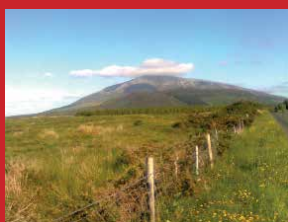
Belmullet, Co. Mayo.

Sat Nav 54.2892, -9.9884

Easy 5km walking trail, starting at the car park at Erris Head. Offering spectacular views of this unspoilt and untouched part of Ireland.

www.errisbeo.ie www.irishtrails.ie

Enjoy some of Ireland's best mountain walking routes and hiking trails. Below are listed just some of the many routes that are available in the West of Ireland, just waiting to be explored.



Bothy Loop

Letterkeen Woods, Co. Mayo.

Sat Nav 53.9981, -9.5726

Moderate 6km walking trail at the junction of two long-distance trails – the Bangor Trail and the Western Way. The trail follows the riverbank, tracks and forest roads in the lowlands of the Nephin Mountains.

www.irishtrails.ie



Pigeon Hole Loop

Cong, Co. Mayo. F31 Y681

Sat Nav 53.5408, -9.2870

Easy 4.7km trail starting opposite the Tourist Office in Cong and crossing the Cong river before passing several caves including Pigeon Hole Cave.

www.irishtrails.ie



Letterfrack Poetry Trail

Letterfrack, Co. Galway. H91 K2Y1

Sat Nav 53.5544, -9.9481

Easy/moderate 1.5km walking trail takes you from plaque to plaque around Letterfrack village. Each plaque contains a poem.

www.irishtrails.ie



New Village Walk

Oughterard, Co. Galway.

Sat Nav 53.4391, -9.3401

Moderate 5km walking trail following the forest road through forest plantations of spruce and pine to Glann road. Amazing views of Lough Corrib.

www.coillte.ie



Monivea

Monivea, Co. Galway.

Sat Nav 53.3772, -8.6894

Moderate 1.5km walking trail through woodland on what was once the Ffrench estate. Pass the Ffrench family Mausoleum constructed in 1900 and a well preserved ice house.

www.coillte.ie



SPECIAL Discoveries

in the West

FESTIVALS

Looking for laughs, music, food, and entertainment?
Look no further than Ireland's West with an array of festivals to choose from.



The 9th Mayo International Choral Festival 20th–24th May 2020

Choral Festival taking place across Castlebar's region in various locations and venues. Highlights for visitors include tours of Mayo, local choirs, local performances, the Song-way Choral Trail and the Saturday evening Gala Concert.

www.mayochoiral.com



Eyre Square Brass Band Concerts Each Saturday Afternoon, June & July

Find a sunny spot and soak up the atmosphere as the St. Patrick's Brass Band from Galway & their guests perform open-air concerts for all to enjoy!

www.galwaytourism.ie



Sea Sessions Surf & Music Festival 19th–21st Jun 2020

With Irish & International music acts, surfing, skating, yoga, beach sports and of course a beach party, this festival takes place in Bundoran, Co. Donegal and has something for everyone!

www.seasessions.com



Ballina Salmon Festival 07th–13th July 2020

In its 55th year this is one of the West of Ireland's longest running events. The festival celebrates life on the Wild Atlantic Way and has dedicated one third of its programme solely to children.

www.ballinasalmonfestival.ie



Galway International Arts Festival 13th–26th July 2020

An international festival celebrating theatre, dance, opera, visual arts, comedy and much more. Named by The Guardian as being one of the Top 5 Summer Festivals in Europe.

www.giaf.ie

Your Daily Adventure

Ireland's West



A-Z Index

Ref	Attraction	See page...
25	Achill Island	19
45	Aran Island Ferries	32
46	Aran Islands	32
14	Arigna Mining Experience	12
48	Athenry Castle	33
39	Aughnanure Castle	29
Blue Flag	Blue Flag Beaches of Donegal	8
Blue Flag	Blue Flag Beaches of Galway	26
Blue Flag	Blue Flag Beaches of Mayo & Sligo	17
15	Boyle Abbey	13
49	Burren Nature Sanctuary	34
11	Carrowmore Megalithic Cemetery	11
21	The Cathedral of Saint Patrick and Saint Felim	16
24	Céide Fields	19
32	Clare Island Ferry—O'Grady's	23
37	Clifden	27
19	Corlea Trackway Visitor Centre	15
35	Delphi Resort	26
6	Donegal Castle	9
12	Drumcliffe Church & W.B. Yeats Grave	11
20	Drumlane Abbey & Round Tower	16
13	Eagles Flying	12
23	The Father Peyton Centre	18
1	Fanad Lighthouse	7
9	Fenagh Visitor Centre	10
52	Foynes Flying Boat & Maritime Museum	35
43	Galway Atlantaquaria	30
4	Glebe House & Gallery	9
7	Glencar Waterfall	10
38	Glengowla Mines & Working Farm Experience	28

Ref	Attraction	See page...
2	Glenveagh National Park	7
42	Great Escape Rooms	30
27	Inishturk Island	20
40	Ionad Cultúrtha an Phiarsaigh, Conamara	29
22	The Jackie Clarke Collection	18
31	Jeremiah Higgins	23
34	Killary Adventure Company	25
36	Kylemore Abbey	27
41	Legend of The Claddagh Ring	29
16	Lough Key Forest & Activity Park	13
18	The National Famine Museum Strokestown Park	15
30	National Museum of Ireland	22
5	Newmills Corn & Flax Mills	9
26	O'Malley Ferries Clare Island and Inishturk Island	20
8	Parke's Castle	10
47	Portumna Castle & Gardens	33
50	Saint Mary's Cathedral	35
3	Slieve League Cliffs	8
10	Sligo Abbey	11
	Special Discoveries—Great Walking Trails	36/37
	Special Discoveries—Festivals	38
51	Stonehall Wildlife Park	35
33	The Sheep & Wool Centre	25
44	Trad on the Prom	31
28	Westport Cruises	21
29	Westport House	21
17	Zipit Forest Adventures	14
	Ireland's West Map of Attractions	4/5



MAKERS OF THE

Authentic Claddagh Ring™

TAX FREE SHOPPING FOR NON EU RESIDENTS

SHOP ONLINE



CLICK & COLLECT

VISIT OUR STORES

25 MAINGUARD ST. GALWAY ☎ 091 562 310 2 GRAFTON ST. DUBLIN 2 ☎ 01 607 4018

📌 FB.COM/CLADDAGHJEWELLERS 📧 SHOP@THECLADDAGH.COM

WWW.THECLADDAGH.COM



LEGEND OF THE CLADDAGH RING™

VISITOR CENTRE GALWAY



GALWAY'S NEW AND EXCITING CLADDAGH RING VISITOR CENTRE AND WORKSHOP

Learn about the origins of Galway's iconic Claddagh ring which dates back over 300 years. Come and see where the Authentic Claddagh Ring™ is made.

26 SHOP STREET, GALWAY.

🌐 WWW.CLADDAGHLEGEND.COM 📌 FB.COM/CLADDAGHLEGEND