

The BEST Visitor Attractions

GLANCE

# Your Daily Adventure

2020/21

FREE  
Visitor  
Guide



Ireland's  
North

WIN  
a Great  
Lighthouses  
of Ireland  
holiday



discover  
northernireland  
.com

DISCOVERIRELAND.IE

YourDailyAdventure.com

# WIN

# an Amazing Holiday Break at a



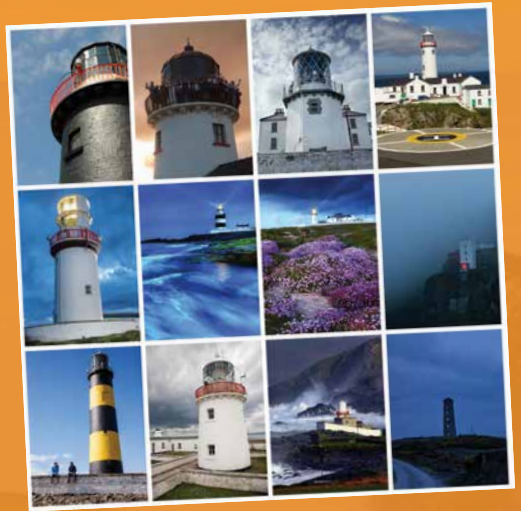
Take our  
**2-minute** online  
feedback survey,  
and you could win  
this fantastic prize.

This Daily Adventure guide provides you with lots of great ideas on things to do, see and enjoy during your Ireland holiday. We encourage and welcome reader feedback and, therefore, if you take our 2-minute **online survey** you will have a chance of winning a wonderful Lighthouse Holiday Break for up to 5 people sharing at a choice of locations around Ireland.

## Take the Survey and Win

Our feedback survey will take you no more than 2 minutes to complete, and you can do so online via [www.YourDailyAdventure.com/enter](http://www.YourDailyAdventure.com/enter), OR you can scan the QR code above.

You must complete the online survey no later than **Friday, October 9, 2020**.



## The Prize

### A Stay at an Amazing Irish Lighthouse

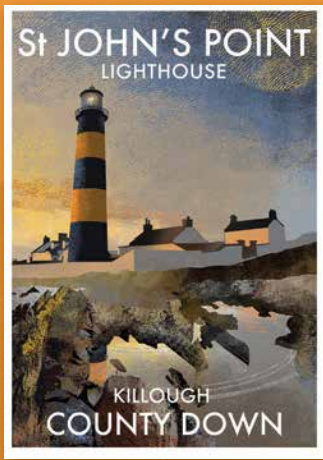
Great Lighthouses of Ireland features 14 amazing lighthouses perched high in dramatic locations around Ireland's stunning coastline. They are wonderful to visit, and visitors can also stay at eight of these lighthouses.

See [www.GreatLighthouses.com](http://www.GreatLighthouses.com).

The lucky winner, selected from those completing our survey, will get to enjoy an exhilarating 3-night stay, for up to 5 people sharing, at their choice of lighthouse locations. The prize break must be availed of within 12 months of winning.



# Great Lighthouse of Ireland



## 10 posters to be won

Every entry will be entered in a draw to win one of 10 fabulous posters by award-winning author and illustrator, Roger O'Reilly. The collection of almost 90 lighthouses of Ireland is available on [www.IrelandPosters.ie](http://www.IrelandPosters.ie) As shown here the posters capture the uniqueness of each lighthouse setting. They are great for framing and bring wild and natural Ireland into any room where they hang.

**Winners of the posters will also be selected on Friday, October 16, and they can select which lighthouse poster they wish to receive as their prize from IrelandPosters.ie.**

## Terms and Conditions

- You must be aged 18 or over to participate.
- The survey must be completed online no later than Friday, October 9, 2020.
- The survey may only be completed once. Entering more than once will disqualify from the opportunity to win the prize.
- One lucky winner will be selected from the survey returns and will be selected on Friday, October 16, 2020.
- The '3-night Lighthouse Holiday Break' must be availed of within 12 months of winning the prize (dates subject to availability at the selected lighthouse).

# Welcome to Ireland's North

# Contents

Ref	Attraction	See page...
1	Titanic Belfast	7
2	HMS Caroline	8
3	Belfast City Hall	8
4	Belfast City Sightseeing	9
5	Crumlin Road Gaol	9
6	St. Anne's Cathedral	10
7	St. George's Market	10
8	The Great Light & Titanic Walkway	11
9	Ulster Museum	12
10	Antrim Castle Gardens	12
11	Flame Gasworks	12
12	Andrew Jackson Cottage & US Rangers Centre	13
	Blue Flag Beaches	13
13	Glenoe Waterfall	14
14	Mid & East Antrim	14
15	Carnfunnock Country Park	14
16	Gracehill Village	15

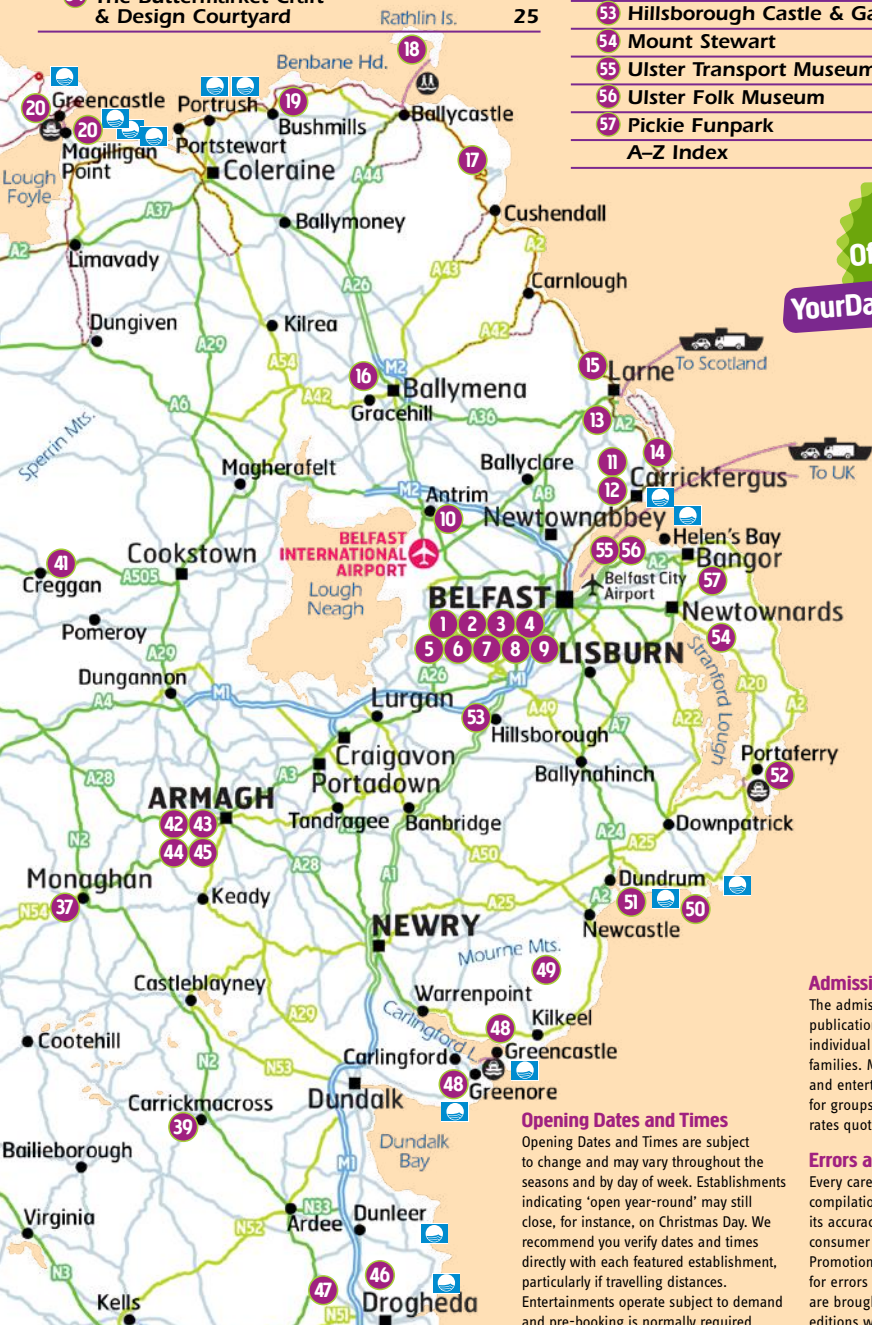




Sustainable printing practices implemented. Please pass on or recycle when finished.

Ref	Attraction	See page...
17	Causeway Coastal Route	15
18	Rathlin West Light Seabird Centre	16
19	Giant's Causeway Visitor Experience	16
20	Lough Foyle Ferry	17
21	17th Century Walls	18
22	Ness Country Park	18
23	Fanad Lighthouse	19
24	Glenveagh National Park	19
25	Glebe House & Gallery	20
26	Newmills Corn & Flax Mills	20
27	Donegal Castle	20
28	Slieve League Cliffs	21
29	Waterworld & Bundoran Seaweed Baths	22
	Blue Flag Beaches Donegal	22
30	Belleek Pottery	23
31	Castle Archdale Country Park	24
32	Lough Erne	24
33	Enniskillen Castle and Heritage Town	25
34	The Buttermarket Craft & Design Courtyard	25

Ref	Attraction	See page...
35	Drumlane Abbey & Round Tower	26
36	The Cathedral of Saint Patrick and Saint Felim	26
37	Rossmore Forest Park	27
38	Clones Heritage Town	27
39	Carrickmacross Heritage Town	27
40	Ulster American Folk Park	28
41	An Creagán	28
42	Armagh	29
43	Armagh County Museum	29
44	Saint Patrick's Cathedral Armagh	30
45	Navan Centre & Fort-Emain Macha	30
46	Discover Boyne Valley	31
47	Old Mellifont Abbey	31
48	Carlingford Lough Ferry	32
49	Mourne Mountains	33
50	Tyrella Beach	33
51	Murlough National Nature Reserve	34
52	Exploris Aquarium	35
53	Hillsborough Castle & Gardens	35
54	Mount Stewart	36
55	Ulster Transport Museum	36
56	Ulster Folk Museum	36
57	Pickie Funpark	37
A-Z Index		39



For details on Attraction Offers & Events visit [YourDailyAdventure.com](http://YourDailyAdventure.com)

### Admission Rates

The admission rates quoted in this publication are the normal rates for individual adult admissions, children and families. Many of the featured attractions and entertainments do offer special rates for groups, students and seniors. The rates quoted are the 2020 rates.

### Opening Dates and Times

Opening Dates and Times are subject to change and may vary throughout the seasons and by day of week. Establishments indicating 'open year-round' may still close, for instance, on Christmas Day. We recommend you verify dates and times directly with each featured establishment, particularly if travelling distances. Entertainments operate subject to demand and pre-booking is normally required.

### Errors and Omissions

Every care has been taken in the compilation of this guide to ensure its accuracy and compliance with the consumer protection laws. Glance Promotions cannot accept responsibility for errors or omissions, but where such are brought to our attention future editions will be amended accordingly.

Ireland's North has an enormous energy about it and offers the visitor truly authentic and rewarding experiences. You will find that whatever you seek for a great day out is always close by.

This free publication aims to enhance your visitor experience by providing you with information on just some of the managed visitor attractions and places of interest open to the public for you to enjoy during your visit.

From nature's great coastal attractions, like the Giant's Causeway, to more relaxing country parks. Industrial heritage, social history, architectural splendour, superb beaches, and intriguing museums are all available for exploration.

## Plenty of choice

Variety is the essence of a good holiday and Ireland's North certainly provides a wide range of attractions and visitor experiences to choose from.

Detailed information is included on each attraction and visitor experience including eircodes and sat nav co-ordinates, opening times and admission rates.

## Enjoy!

Finally, we do hope that you take the time to explore the rich heritage and delights of this wonderful region of Ireland and that your 'Daily Adventure' is a rewarding and enjoyable one.

Guides for other regions in Ireland are widely available.

We would welcome your feedback on the guide to [info@glancepromotions.ie](mailto:info@glancepromotions.ie)



Published by

**GLANCE**

Publisher, John Rice.  
Published by Glance Promotions,  
Tipperary, Ireland.  
Tel: 061-338588,  
[info@glancepromotions.ie](mailto:info@glancepromotions.ie)  
[www.glancepromotions.ie](http://www.glancepromotions.ie)  
Design: OpticNerve.ie

Associate Member of



First European Member of



The International Association of  
Visitor Information Providers





# Titanic Belfast

Titanic Quarter, Belfast City

**HeritageISLAND**  
IRELAND'S PREMIER ATTRACTIONS



## Visiting



### Contact

Titanic Belfast, 1 Olympic Way  
Queen's Road, Titanic Quarter  
Belfast, BT3 9EP  
Tel: 028 9076 6386  
Int: +44 28 9076 6386  
welcome@titanicbelfast.com  
www.titanicbelfast.com



### Location

Approaching Belfast on the M1 or M2, follow the signs to Belfast City Airport M3, taking the first exit for Titanic Quarter



### SatNav: Latitude/Longitude

54.6083, -5.9097



### Opening Times

Jan to Mar: 10:00–17:00h every day (last slot 15:15h)  
April to May: 09:00–18:00h every day (last slot 16:15h)  
June to August: 08:30–19:00h every day (last slot 17:15h)  
Sept: 08:30–18:00h every day (last slot 16:15)  
Oct to Dec: 10:00–17:00h every day (last slot 15:15h)



### Admission Rates

Ticket price available online



### Information

The Pantry, Galley Café and Hickson's Point offer a wide range of hearty menu options featuring the very best of Northern Irish produce. Titanic Store offers an exclusive range of clothing, gifts and unique memorabilia



### Parking

Parking available, secure underground parking spaces. Parking charges apply, see website for more details



## The birthplace of Titanic

Titanic Belfast, a World Leading Tourist Attraction, is only 90 minutes away from Dublin and a must-see for visitors to Ireland. Located on the spot where the famous ship was designed and launched, it's nine interpretive and interactive galleries tell the story of the Titanic, from her conception in Belfast in the early 1900s, through her construction and launch, to her famous maiden voyage and tragic end.

Take the Discovery Tour and explore hidden treasures and walk in the footsteps of the men that built Titanic. The award-winning walking tour showcases the recently revamped Harland & Wolff

Drawing Offices, where the ships were designed, the slipways where the ship was launched and Titanic Belfast's iconic structure.

Guests can delve deeper and jump on board the SS Nomadic, the last remaining White Star Line vessel and the biggest Titanic artefact in the world. Famous as a tender for Titanic, and a quarter of her size in every dimension, guests can marvel at the original ornate doors, panels, plasterwork and staircases that greeted first and second class passengers on board, as well as see what life was like for the crew. It is now integrated in Titanic Belfast's ticket price. To book, visit [www.titanicbelfast.com](http://www.titanicbelfast.com)

## Want to become a Titanorac?

Want to know more Titanic facts than you could ever have imagined? There's no more authentic place—and no better place—to experience the Titanic story than at Titanic Belfast.

The nine-gallery interactive attraction which is housed inside one of the world's most revered architectural wonders, appeals to visitors of all ages. It's interactive galleries, telling the story of Titanic from her birth to her tragic demise more than 100 years ago, overlooks the very slipway on which the great liner was built. For more information check out [www.titanicbelfast.com](http://www.titanicbelfast.com)





# HMS Caroline

Titanic Quarter, Belfast City

## A unique Survivor



Based in Belfast's famous Titanic Quarter, HMS Caroline is a First World War-era naval ship now restored as a must-see floating museum with an amazing story to tell.

Be immersed in life aboard this unique vessel—lone survivor of history's greatest naval engagement... the Battle of Jutland!

Enjoy the new quayside visitor centre dedicated to telling the personal stories of those who served on the 'Carry'. Then step aboard to see a powerful film on the drama of Jutland and experience

impressively restored cabins and deck areas as well as an array of state-of-the-art interactive exhibits.

Soak up the atmosphere as you find out about communication at sea in the Signal School, and continue to the Torpedo School before finishing your visit at the authentic galley café.

## Visiting



### Contact

HMS Caroline  
Alexandra Dock, Titanic Quarter  
Belfast, BT3 9DT  
Tel: 028 9045 4484  
Intl: +44 28 9045 4484  
info.caroline@nmrn.org.uk  
www.nmrn.org.uk



### Location

Approaching Belfast on the M1 or M2 follow the signs to Belfast City Airport (M3) and take the first exit for Titanic Quarter



### SatNav: Latitude/Longitude

54.6134, -5.9024



### Opening Times

Open Daily 10:00–17:00h  
Last admission 16:00h



### Admission Rates

Ticket prices available online



### Information

Café and shop on board



### Parking

Car and coach parking available



# Belfast City Hall

Belfast City

## Located in the heart of Belfast City

This iconic Portland stone and copper-domed building completed in 1906, was built as a symbol of Belfast's new city status. The interior has a number of notable features including The Porte-Cochère and Grand Entrance, The Grand Staircase, The Reception Room and The Great Hall.

In the grounds of City Hall visit the Titanic Memorial Gardens which host the Titanic Monument. The Memorial Garden was officially opened in 2012, the 100th anniversary of the Titanic sinking. The garden's memorial plinth supports 15 bronze plaques which list, in alphabetical order, the names of 1,512 people who perished on RMS Titanic.

The City Hall's east wing on the ground floor has been completely renovated to facilitate a visitor exhibition stretching over 16 separate rooms, offering a journey from the city's past to present.



## Visiting



### Contact

Belfast City Hall  
Donegall Square, Belfast BT1 5GS  
Tel: 028 9032 0202  
Intl: +44 28 9032 0202  
www.belfastcity.gov.uk



### Location

Located on Donegall Square, Belfast City Centre



### SatNav: Latitude/Longitude

54.5967, -5.9300



### Opening Times

Mon to Fri 09:00–17:00h  
Sat & Sun 10:00–17:00h  
(Times subject to change)



### Admission Rates

Free admission, public tours are free of charge, donations welcome



### Information

Visitor exhibition time slots are offered every 15 minutes. Lunch & refreshments available in The Bobbin coffee shop



### Parking

City Centre Car-parks





# Belfast City Sightseeing

## Belfast City

### Don't miss a thing with a Hop-on Hop-off tour

Providing you with a comprehensive look at Belfast city and allowing you to explore every area and district of this unique place. Tours operate seven days per week and tickets are valid for 24 hours for one day pass holders or 48 hours if you purchase the two day ticket option.

If you do not Hop-on / Hop-off the tour lasts approx 1 hour 30 minutes.

Tours depart from Castle Place in Belfast city centre but you can join the tour from any stop along the route. The tour offers a multi-lingual service available



in six languages including, English, French, Spanish, Italian, German and Mandarin.

Day tours available from Belfast to Giant's Causeway and Game of Thrones Tour visit [www.irishtourtickets.com](http://www.irishtourtickets.com) for further information.

## Visiting



### Contact

Belfast City Sightseeing  
Booking Office  
10 Great Victoria Street  
Belfast, BT2 7BA  
Tel: 028 9032 1321  
Int: +44 28 9032 1321  
info@citysightseeingbelfast.com  
[www.belfastcitysightseeing.com](http://www.belfastcitysightseeing.com)



### Location

There are 23 Hop-on/Hop-off bus stops. **Stop 1: Castle Place** (Outside Office shoe shop)  
See website for the full list



### SatNav: Latitude/Longitude

**Castle Place:** 54.5995, -5.9294



### Opening Times

Tours available 7 days a week



### Admission Rates

Single day tickets: Adult £12.50,  
Child (U15) £6, Family (2+3) £31  
Two day tickets: Adult £14, Child (U15) £7.50, Family (2+3) £35  
Discounts available if booking online



### Information

Multi-lingual services available  
Join the tour at any of the stops



### Parking

Paid on street parking available  
Castle court car parking is the closest car parking to the first stop



# Crumlin Road Gaol

## Belfast City

### Explore over 150 years of history



Crumlin Road Gaol first opened its gates to prisoners in 1846 and was a fully operational prison, only closing its doors in 1996. During that time the Gaol housed murderers, suffragettes, loyalist and republican prisoners. It has

witnessed births, deaths and marriages, as well as executions, escapes, hunger-strikes and riots.

On your 75 minute guided tour you will be taken through the years and experience what life was like for those imprisoned in "The Crum". Step into the Circle and see each of the 4 wings radiate out. Explore C-Wing and see what prison conditions were like throughout the Gaol's history, you will also make the journey through the Tunnel that connects the Gaol and the Courthouse. Visit the Condemned Man's Cell and Execution Chamber, and finally, visit the Grave Site where many of the executed men still remain to this very day.

## Visiting



### Contact

Crumlin Road Gaol  
53-55 Crumlin Road  
Belfast, BT14 6ST  
Tel: 028 9074 1500  
Int: +44 28 9074 1500  
info@crumlinroadgaol.com  
[www.crumlinroadgaol.com](http://www.crumlinroadgaol.com)



### Location

From M1 & M2 motorways follow directions to Clifton street and follow signs for Crumlin Road Gaol



### SatNav: Latitude/Longitude

54.6089, -5.9422



### Opening Times

Open 7 days a week  
Guided tours from 10:00-16:30h



### Admission Rates

Adult £12, Child (5-15yrs) £7.50 (U5) Free, Senior/Student £10  
Family (2+2) £30  
Pre-book online for discount!



### Information

Gift shop stocking full range of locally sourced gifts and memorabilia. Coffee Shop open daily  
Licensed restaurant Cuffs Bar & Grill  
Regular jail themed live music events—full listings online



### Parking

On-site car parking available





# St. Anne's Cathedral

Belfast City

## Hope in the City



In the heart of the city of Belfast, St. Anne's Cathedral has stood for over 100 years as a place of Christian worship. There are beautiful works of art to be seen: mosaics, textiles, carvings and many historical artifacts. It possesses an uncluttered spaciousness that draws us into the awe

and wonder of the greatness of God. The Cathedral welcomes tourists, pilgrims, regular worshippers, or merely those seeking a quiet place to ponder alone. The ticket price includes a guide book and volunteer stewards are on hand to offer information and guided tours on request.

## Visiting



**Contact**  
 St. Anne's Cathedral  
 Donegall Street, Belfast, BT12 2HB  
 Tel: 028 9032 8332  
 Int: +44 28 9032 8332  
[www.belfastcathedral.org](http://www.belfastcathedral.org)



**Location**  
 City Centre



**SatNav: Latitude/Longitude**  
 54.6028, -5.9284



**Opening Times**  
 Mon to Sat 09:00–17:00h  
 Sun 13:00–15:00h  
 Sunday Services 11:00 & 15:30h



**Admission Rates**  
 Adult £5, Student/Senior £4  
 Child (5–12 yrs) £3, Family (2+2) £12  
 Guided tours £6



**Parking**  
 The Cathedral car park is conveniently located within the Cathedral Quarter in the City Centre



# St. George's Market

Belfast City

## One of Belfast's oldest attractions



Built between 1890 and 1896 this is one of the best markets in the UK and Ireland. It has been selected for numerous local and national titles and awards for its fresh, local produce and great atmosphere. It holds a weekly market on Friday, Saturday & Sunday. It also hosts a range of events throughout the year.

Variety Market on Friday offers over 240 stalls selling a variety of products including: fruit, vegetables, antiques, books, clothes and fish. City Food and Craft Market on Saturday offers a huge range of local, continental and specialty foods as well as handmade crafts, flowers, plants and local photography, pottery, glass and metal work. Sunday Market is a mixture of the Friday and Saturday markets with a special emphasis on local arts and crafts. You can also expect live music from local bands.

## Visiting



**Contact**  
 St. George's Market  
 12–20 East Bridge Street  
 Belfast, Antrim, BT1 3NQ  
 Tel: 028 9043 5704  
 Int: +44 28 9043 5704  
[markets@belfastcity.gov.uk](mailto:markets@belfastcity.gov.uk)



**Location**  
 Opposite the Belfast Waterfront. You can access it via Oxford Street, May Street and East Bridge Street



**SatNav: Latitude/Longitude**  
 54.5957, -5.9197



**Opening Times**  
 Friday Variety Market 06:00–15:00h  
 Saturday Food & Craft Market 09:00–15:00h  
 Sunday Variety, Food & Craft Market 10:00–16:00h



**Parking**  
 There is a range of multi-story car parks close to St. George's Market including: Waterfront Hilton, Lanyon Place and Victoria Square





# The Great Light & Titanic Walkway

Belfast City



©Titanic Foundation

## A world of maritime history

Dive into Belfast's seafaring history and have a fun day out exploring the Maritime Mile. Start at the historic Clarendon Dock and Sailortown, make your way up to the Big Fish, across the Lagan Footbridge and through Titanic Quarter, taking in some of the city's greatest attractions.

Make sure you visit the Great Light, located on the Titanic Walkway, which connects the Titanic and Olympic Slipways to HMS Caroline and the Thompson Dock. There are lots of fantastic scenic viewpoints of the port along the way.

The Great Light is one of the largest and most breath-taking optics ever built! This optic gave Mew Island Lighthouse on the Copeland Islands the traditional revolving light and helped to guide seafarers to and from Belfast Lough until 2014. The light was moved from Mew Island in 2014 as the lighthouse

was modernised and converted to solar power.

Prepare to be fascinated by this unique sight as the Great Light is over 130 years old, weighs 10 tonnes and stands at seven metres tall! It hosts huge Fresnel Hyper-Radical lenses meaning it has one of the strongest lighthouse beams ever to shine!

While the Great Light is no longer aiding mariners, it has taken on a new role, that of bringing to life the story of lighthouses, their technological developments, and their lightkeepers and allowing visitors to immerse themselves in a little bit of maritime history.

**For more information on Ireland's lighthouses experiences visit [www.greatlighthouses.com](http://www.greatlighthouses.com)**



## Visiting



### Contact

The Great Light & Titanic Walkway  
Titanic Quarter  
Belfast, BT3 9EP  
Tel: 028 9073 0490  
Int'l: +44 28 9073 0490  
[greatlighttq.org/visit/enquiries/](http://greatlighttq.org/visit/enquiries/)  
[www.greatlighttq.org](http://www.greatlighttq.org)



### Location

Located on Victoria Wharf



**SatNav: Latitude/Longitude**  
54.6018,-5.9086



**Opening Times**  
All year



**Admission Rates**  
Free



### Information

Cafés, bars and shops all located within easy walking distance  
Various community events along the waterside throughout the year



©Titanic Foundation





# Ulster Museum

**Belfast City**

**HeritageISLAND**  
IRELAND'S PREMIER ATTRACTIONS

Come face to face with dinosaurs, meet an Egyptian Mummy and see modern masterpieces with a visit to the Ulster Museum. As Northern Ireland's treasure house of the past and present, the museum is home to a rich collection of art history and natural sciences, impressive galleries, interactive discovery zones and is free to all visitors. Museum Highlights: Troubles and Beyond Exhibition, Changing Views Exhibition and Elements Exhibition.



## Visiting



**Contact**  
Ulster Museum  
Botanic Gardens, Belfast, HI2 X977  
Tel: 028 9044 0000  
Int: +44 28 9044 0000  
info@nmni.com  
www.nmni.com



**SatNav: Latitude/Longitude**  
54.5822, -5.9357



**Opening Times**  
Open year round. Tue to Sun 10:00–17:00h. Closed Mondays except Bank Holidays



**Admission Rates**  
Free



**Parking**  
Limited on-street parking. Park & Ride facilities at Bridge End, York Street, Blacks Road and Sprucefield



# Antrim Castle Gardens

**Antrim, Co. Antrim**

**HeritageISLAND**  
IRELAND'S PREMIER ATTRACTIONS

A restored late 17th century Anglo-Dutch water garden with ponds, long canals, a large Parterre, Wilderness, an ancient Norman motte and buildings, including a Barbican Gate Lodge and Clotworthy House—a coach yard and stable block in a Dutch style built in the 1840s. New visitor facilities include a Garden Coffee Shop, Gift Shop, and Oriel Gallery.



## Visiting



**Contact**  
Antrim Castle Gardens  
Randalstown Road, Antrim  
Co. Antrim, BT41 4LH  
Tel: 028-9448 1338  
Int: +44 (0)28 9448 1338  
clotworthy.reception@antrimandnewtownabbey.gov.uk  
www.antrimandnewtownabbey.gov.uk/visitors



**SatNav: Latitude/Longitude**  
54.7180, -6.2263



**Opening Times**  
Open year round. Mon, Wed & Fri 09:00–17:00h Tue & Thurs 09:00–21:30h, Sat & Sun 10:00–17:00h  
Closed Jul 12, Dec 25 & 26 and Jan 01



**Admission Rates**  
Free admission



**Parking**  
Free onsite parking

# Flame Gasworks

**Carrickfergus, Co. Antrim**

**Causeway Coastal Route**

Flame Gasworks is Ireland's sole surviving gasworks and the largest in Western Europe. It opened in 1855 and supplied Carrickfergus with coal gas until 1967. It closed in 1987 but was restored by Carrickfergus Gasworks Preservation Society as a visitor attraction in 2002. View the 36 retorts, ascend the gasholder, and browse the collection of appliances. A fascinating visit – guaranteed!



## Visiting



**Contact**  
Flame Gasworks Museum,  
44 Irish Quarter West, Carrickfergus,  
Co. Antrim, BT38 8AT  
Tel: 028 9336 9575  
Int: +44 28 9336 9575  
info@flamegasworks.co.uk  
www.flamegasworks.co.uk



**SatNav: Latitude/Longitude**  
54.7145, -5.8117



**Opening Times**  
May to Aug: Daily (except Sat), 14:00–17:00h. Sept: Mon to Fri 14:00–17:00h  
Open by appointment at all other times  
Last tour 16:00h



**Admission Rates**  
Free, donations welcome



**Information**  
Guided Tours, Exhibition, Toilets, Wheelchair friendly, Disabled parking, Meeting room, Shop, Research library



**Parking**  
Public car park at Carrickfergus Castle



# Andrew Jackson Cottage & US Rangers Centre

Carrickfergus, Co. Antrim



## The Ulster American and Ulster Scots connection



A traditional thatched cottage built in the 1750s by the Donaldson family and lived in by them until 1979. It has been restored to its original state including an open fireplace with a daub and wattle canopy and hanging crane. The interior includes a dresser, sponge wear crockery and iron pots and griddles. The centre has an

impressive exhibition on the life and career of Andrew Jackson (1767-1845) 7th President of the United States of America whose parents emigrated from here in 1765.

The US Rangers Centre is located on-site, a museum dedicated to the men of the first battalions of the elite American Army Unit the "US Rangers" that was first 'activated' in Carrickfergus in 1942. The display includes documents, uniforms and photographs and other material detailing this famous combat unit.

## Visiting



### Contact

Andrew Jackson Cottage and US Rangers Centre  
2 Boneybefore  
Carrickfergus  
Co. Antrim BT38 7EQ  
Tel: 028 9335 8241  
Int'l: +44 28 9335 8241  
[www.midandeastantrim.gov.uk](http://www.midandeastantrim.gov.uk)



### Location

Located 1 mile from Carrickfergus, off the Larne Road-Donaldson's Avenue



**SatNav: Latitude/Longitude**  
54.7227, -5.7835



### Opening Times

Open Wed to Sun 11:00-15:00h



### Admission Rates

Free admission



### Information

Guided tours available (must be pre-booked) Café on-site



### Parking

Free parking



# Blue Flag Beaches

## Enjoy a day at the beach



With such an extensive coastline around Ireland's North, you would expect to find quality beaches... and you won't be disappointed. The naturally stunning formations of the coastline provide long stretches of golden sand and impressive sand dunes.

With several beaches meeting the Blue Flag standard you are

certain to never be far away from a great day out at the beach.

The miles of beaches are great for swimming, exploring rock pools and all sorts of beach fun. There are plenty of water activities to be enjoyed from sub-aqua, sailing, diving, water skiing, rowing, canoeing, land yachting and surfing. Go dolphin or whale watching or relax with the many boat experiences and cruises available. If you enjoy the great outdoors, there's no better place for a holiday or a day out. There's so much to see and do!

## Visiting



### Contact

For up-to-date listings of current Blue Flag Beaches please drop into any visitor information centre  
[www.blueflag.org](http://www.blueflag.org)



### SatNav: Latitude/Longitude

**Northern Ireland**  
Ballycastle: 55.2047, -6.2311  
Ballyronan Marina: 54.7092, -6.5295  
Bangor Marina: 54.6642, -5.6695  
Carrickfergus Marina: 54.7111, -5.8142  
Cranfield West: 54.0303, -6.0739  
Downhill: 55.1663, -6.8214  
Magilligan, Benone Strand: 55.1871, -6.9576  
Murlough: 54.2570, -5.8450  
Portrush: 55.1981, -6.6592  
Portstewart: 55.1719, -6.7272  
Tyrella Beach: 54.2536, -5.7469  
Whiterocks: 55.2073, -6.6587

### Louth

Clogherhead: 53.7991, -6.2615  
Port Lurganboy: 53.8270, -6.2702  
Shellinghill/Tempelton: 53.9787, -6.1586





# Glencoe Waterfall

## Glencoe, Co. Antrim

A beautiful waterfall nestling in the glens of Antrim. Located only a short stroll (100m) from the charming village of Glencoe, steps and paths wind around a small glen with one of the most picturesque waterfalls in Northern Ireland. Don't miss this favourite photographic location.



## Visiting



**Contact**  
Glencoe Waterfall  
Waterfall Road, Glencoe  
Co. Antrim, BT40 3LE  
Tel: 028 9064 7787  
Int: +44 (0)28 9064 7787  
[www.nationaltrust.org.uk](http://www.nationaltrust.org.uk)



**SatNav: Latitude/Longitude**  
54.7995, -5.8324



**Information**  
Open year round  
Free admission  
30 foot waterfall



**Parking**  
2 small car parks accessible from B99

# Mid & East Antrim Shaped by Sea & Stone

## Islandmagee, Co. Antrim



Discover a region that has been Shaped by Sea & Stone located on the famous Causeway Coastal Route and home to The Gobbins Cliff Path and many Game of Thrones filming locations. The region offers great attractions and a range of experiences from Whiskey Tasting to blacksmithing. For food lovers try the award-winning beef & salmon at Glenarm Castle, locally produced craft beer at Hillstown Brewery or why not try the local delicacy, Lough Neagh eels?



## Visiting



**Contact**  
The Gobbins  
68 Middle Road, Islandmagee  
Co. Antrim, BT40 3SL  
Tel: 028 2563 5010  
Int: +44 (0)28 2563 5010  
[tourism@midandeastantrim.gov.uk](http://tourism@midandeastantrim.gov.uk)  
[www.shapedbyseaandstone.com](http://www.shapedbyseaandstone.com)



**SatNav: Latitude/Longitude**  
54.7833, -5.7068



**Opening Times**  
Open year round:  
Please check website for details



**Admission Rates**  
Admission rates vary



**Parking**  
Parking available at the various attractions

# Carnfunnock Country Park

## Larne, Co. Antrim

Whether it's adventure or escape you're looking for, there's something for everyone at Carnfunnock! Packed full of exciting attractions, the park offers panoramic views of the Antrim Coast thanks to its stunning location. You'll find over 191 hectares of mixed woodland, colourful gardens, walking trails, children's play park and weekend events.



Bookings welcome for the touring caravan park and campground.

## Visiting



**Contact**  
Mid and East Antrim BC  
Coast Road, Larne, Co. Antrim, BT40 2DG  
Tel: 028 2826 2471  
Int: +44 28 2826 2471  
[carnfunnockreception@midandeastantrim.gov.uk](http://carnfunnockreception@midandeastantrim.gov.uk)  
[www.carnfunnock.co.uk](http://www.carnfunnock.co.uk)



**SatNav: Latitude/Longitude**  
54.8909, -5.8452



**Opening Times**  
Open Year Round  
Spring/Summer 09:00–dusk (21:00 Jul & Aug). Autumn/Winter 09:00–16:30  
Subject to weather conditions  
Closed Dec 25



**Admission Rates**  
Entry free—small charge for some activities



**Parking**  
Parking charges apply at certain times. See website for further details.



# Gracehill Village

Gracehill Village, Co. Antrim

## Northern Ireland's first Conservation Area

In 1765 Gracehill was founded by the Moravians, it is a village in County Antrim, Northern Ireland. It is Northern Ireland's First Conservation area.

Today the village is very reminiscent of what it was like in the 18th century with the layout of buildings and the unique Georgian style of architecture remaining the same.

In the centre of the village the Moravian Church can be found, facing the square and flanked by the Manse and the Warden's House. The burial ground, also known as "Gods Acre" can be reached from the

Brothers and Sisters Walks, on either side of the Church. These burial grounds are still in use today.

In 1975 Gracehill was designated a Conservation Area, it has also won many awards including the Europa Nostra Award.



## Visiting



**Contact**  
Gracehill Village  
Ballymena, Co. Antrim  
[www.gracehillvillage.org](http://www.gracehillvillage.org)



**Location**  
It lies about 2 miles from Ballymena and is in the townland of Ballykenny. It is part of the Borough of Ballymena



**SatNav: Latitude/Longitude**  
54.8545, -6.2763



**Information**  
Restaurants & Shop



**Parking**  
Yes



# Causeway Coastal Route

Coleraine, Co. Londonderry

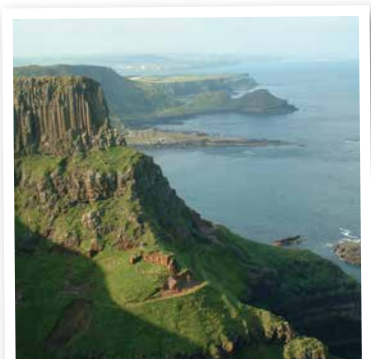
## One of the World's Great Road Journeys

The Causeway Coastal Route from Belfast Lough to Lough Foyle is a kaleidoscope journey of natural wonders, a unique blend of majesty and outstanding beauty.

To travel along the Causeway Coastal Route is to experience one of the most dramatic drives in the world. It is now rated as one of the World's Great Road Journeys. Some 120 miles of stunning coastline will transport you past rugged and windswept cliffs, spectacular scenery and fabulous unspoilt beaches. It's a coastline sprinkled with historic castles, churches and forts. Many are now just ruins but each holds the memories of a mysterious

and heroic past.

The Causeway Coastal Route provides a journey of exploration, where imagination meets reality and where every village and town, castle and rocky shore are waiting to be discovered.



## Visiting



**Contact**  
Causeway Coast & Glens Borough Council  
Cloonavin, 66 Portstewart Road  
Coleraine, BT52 1EY  
Northern Ireland  
Tel: 028 7034 7034  
Int: +44 28 7034 7034  
[www.visitcausewaycoastandglens.com](http://www.visitcausewaycoastandglens.com)  
[www.causewaycoastandglens.gov.uk](http://www.causewaycoastandglens.gov.uk)



**Information**  
The Causeway Coastal Route is a way-marked 120 mile trail. Information available at all Tourist Information Centres





# Rathlin West Light Seabird Centre

Co. Antrim

## A Great Lighthouse of Ireland



Located on Rathlin Island, off the coast of Northern Ireland, Rathlin boasts three lighthouses including the unique Rathlin West Light, which is home to one of the largest seabird colonies in the UK. Every year thousands of seabirds return to breed here including guillemots, razorbills, kittiwakes, fulmars and puffins. The sights and

sounds of so many seabirds at such close quarters is an experience you'll never forget.

Known as Ireland's only 'upside down' lighthouse, be sure to take a tour of it and embrace the views from its cliff-face vantage point to get a real insight into light keeping life.

Whether you're interested in wildlife, curious about engineering or history, or simply want to experience the wonder of this island—the RSPB team will help you get the most out of your visit.

To plan more visits to Great Lighthouses of Ireland see [www.greatlighthouses.com](http://www.greatlighthouses.com)

## Visiting



### Contact

Rathlin West Light Seabird Centre  
Rathlin Island, Ballycastle  
Co. Antrim, BT54 6RT  
Tel: 028 2076 0062  
Int: +44 28 2076 0062  
[www.greatlighthouses.com](http://www.greatlighthouses.com)  
[www.rspb.org.uk/rathlinisland](http://www.rspb.org.uk/rathlinisland)



### Location

Located on Rathlin Island



### SatNav: Latitude/Longitude

55.3004, -6.2797



### Opening Times

Open Apr 01 to Sept 13  
Apr & Sept 11:00–16:00h  
May to Aug 10:00–17:00h  
Last admission is one hour before closing time



### Admission Rates

Adult £5  
Child £2.50  
RSPB Members Free



### Information

Ferry: Ballycastle to Rathlin. Private bus from the harbour to the West Light or a hilly 4.5mile walk

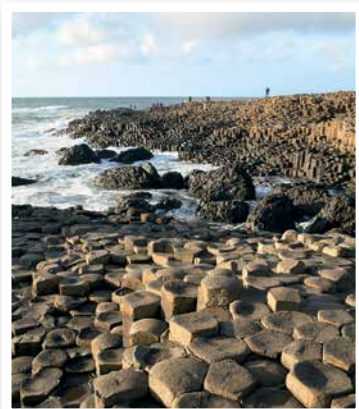


# Giant's Causeway Visitor Experience

Bushmills, Co. Antrim



## Unlock the mystery and stories of the landscape



The Giant's Causeway, Northern Ireland's UNESCO World Heritage Site, is a geological wonder - composed of over 40,000 interlocking basalt columns resulting from intense

volcanic activity 60 million years ago. State of the art interpretation within the award winning Visitor Centre unlocks the mystery and stories of this amazing landscape and offers a glimpse into the wonder that is the Giant's Causeway. Visitors can explore way-marked trails and enjoy spectacular coastal scenery accompanied by an innovative outdoor audio-guide and orientation information available in

a range of languages including English, French, German, Spanish, Italian, Dutch, Portuguese, Russian, Polish, Mandarin and Japanese.

## Visiting



### Contact

Giant's Causeway Visitor Experience  
44 Causeway Road, Bushmills  
Co. Antrim BT57 8SU  
Tel: 028 2073 1855  
Int: +44 28 2073 1855  
[giantscausewaytic@nationaltrust.org.uk](mailto:giantscausewaytic@nationaltrust.org.uk)  
[www.nationaltrust.org.uk/giants-causeway](http://www.nationaltrust.org.uk/giants-causeway)



### Location

On B147, 2mls from Bushmills village



### SatNav: Latitude/Longitude

55.2408, -6.5116



### Opening Times

Open year round  
Daily Jan to Mar 09:00–17:00h  
Apr, May & Oct 09:00–18:00h  
Jun to Sept 09:00–19:00h  
Nov & Dec 09:00–16:00h  
Visitor Centre closes Dec 24/25/26  
Last entry to visitor centre 1hr before closing



### Admission Rates

Adult/Senior £13.50  
Child/Student (U18) £6.75  
Child (US) Free, Family £33.75



### Information

Guided Tours, Café, Gift shop  
Interactive Exhibition



### Parking

Parking included in admission rates







# Lough Foyle Ferry

Greencastle, Donegal



## From the Wild Atlantic Way to the Causeway Coastal Route

Thanks to a 20-minute trip on the Foyle Ferry you have more time to visit the beaches along the North Antrim and North West coasts, each waiting to have sand castles built on them. There are also lots of real castles and scenery to admire including; Malin Head (the stunning most northerly point in Ireland); Horn Head (a Special Area of Conservation); Torr Head and of course Northbur, Glenveigh, Dunluce; Derry's City Walls and Mussenden Temple.

The Causeway Coast and Glens are home to several Game of Thrones filming including the Caves of Cushendun, Ballintoy Harbour and the Dark Hedges. Along the coast in Donegal, Malin Head is so breathtaking, Star Wars filmed the final sequence of "The Force Awakens" with



the re-appearance of Luke Skywalker in the final scene. The franchise returned to film again for "The Last Jedi".

The Foyle Ferry connects a plethora of new (and long established) brewing establishments and a multitude of terrific places to eat, drink and enjoy local hospitality. Surfers, golfers, cyclists, hill walkers, heritage fans and families looking for fun and adventure - all travel on the Foyle Ferry, which runs from June through to mid September.

All your summer relaxation and fun is catered for either side of Lough Foyle and beyond. Visit [loughfoyleferry.com](http://loughfoyleferry.com)

## Visiting



### Contact

Lough Foyle Ferry  
The Pier  
Greencastle, Donegal  
F93 AH34  
Tel: 074 938 1901  
Int: +353 74 938 1901  
[www.loughfoyleferry.com](http://www.loughfoyleferry.com)



### Location

Greencastle: Follow signs for Moville then Greencastle. Once you come into Greencastle village turn right onto the Pier. Eircode F93 AH34  
Magilligan Point: From Coleraine, follow the A2 to point road, take the B202 to Magilligan Point BT49 DLR



### SatNav: Latitude/Longitude

Greencastle: 55.2033, -6.9875  
Magilligan Point: 55.1871, -6.9577



### Sailing Times

June to Sept  
09:00-20:15h  
Please check website for up to date sailings



### Fares

Car single: €17 / £15  
Car return: €22 / £19  
For all ticket types please check [www.loughfoyleferry.com](http://www.loughfoyleferry.com)  
(Full pricelist is displayed on website)  
Tickets can be purchased on board the ferry



## Spectacular scenery

It's officially summer when the Foyle Ferry is back on the water! Travelling from Magilligan Point, across Lough Foyle, to Greencastle in County Donegal, the Foyle Ferry connects the Wild Atlantic Way and the Causeway Coastal Route. The crossing is spectacularly beautiful from the shadows of Binevenagh Mountain to the Inishowen Peninsula.





# 17th Century Walls

Derry-Londonderry

## A Step Back In Time

Take a step back in time and visit Derry-Londonderry where you will find a city crammed full of heritage and history.

This is the only remaining completely walled city in Ireland. The walls were built in 1613-1618 as a defence for the early seventeenth century settlers from England and Scotland.

The walls provide a walkway around the inner city, are between 12 and 35 feet and are one of the greatest examples in Europe of Walled



Cities. This is truly a walled town that has preserved its Renaissance style street plan .

The four original gates to the city were called Bishop's Gate, Ferryquay Gate, Butcher Gate and Shipquay Gate.

## Visiting



**Location**  
Derry-Londonderry



**SatNav: Latitude/Longitude**  
55.0067,-7.3816



**Opening Times**  
All Year



**Admission Rates**  
Free of Charge



**Information**  
Tours available from the Tourist Information Centre



# Ness Country Park

Derry-Londonderry

## Nature at its best



Get away from the hustle and bustle of daily life and take a moment to savour all that nature has to offer. In the steep wooded Glen of Burntollet River, south west of Derry Londonderry lies Ness Country Park. Offering something for all nature lovers.

With over 7km of stunning woodland and riverside walks all you need are walking shoes and a picnic! Be captivated by the stunning waterfall, observe the wildlife in their natural habitat or simply take time out to

enjoy the views, whatever your passion this park offers the perfect haven to relax and unwind.

## Visiting



**Location**  
Derry-Londonderry



**SatNav: Latitude/Longitude**  
54.9518,-7.1810



**Opening Times**  
All Year



**Admission Rates**  
Free of Charge



**Information**  
Visitor Centre onsite



**Parking**  
Free onsite parking available



# Fanad Lighthouse

Fanad, Co. Donegal

## A Great Lighthouse of Ireland



Standing between idyllic Lough Swilly and Mulroy Bay, Fanad Lighthouse has been voted one of the most beautiful lighthouses in the world.

With its location in the Donegal Gaeltacht (an Irish speaking area) on the eastern shore of the windswept Fanad Peninsula, it's little wonder that this lighthouse is a Wild Atlantic Way highlight.

Give yourself plenty of time to take in this coastal corner—time to take in the sensational,

rugged scenery and to really explore the wild and wonderful natural world around you. Lough Swilly, a glacial fjord, is regularly visited by whales, porpoises and dolphins.

Learn more about Fanad Lighthouse by taking a guided tour, during which you can climb to the top of the tower for spectacular 360 views of land and sea. There's a craft shop with a range of unique and local gifts and a café with a view that's hard to beat. Or to truly get away from it all, enjoy a relaxing stay at one of the characterful lightkeepers' houses.

To plan more visits to Great Lighthouses of Ireland see [www.greatlighthouses.com](http://www.greatlighthouses.com)

## Visiting



**Contact**  
Fanad Lighthouse  
Fanad, Co. Donegal, F92 YC03  
Tel: 083 809 1199  
Intt: +353 83 809 1199  
info@fanadlighthouse.com  
www.greatlighthouses.com  
www.fanadlighthouse.com



**Location**  
Located on the Eastern shore of Fanad Peninsula



**SatNav: Latitude/Longitude**  
55.2761,-7.6319



**Opening Times**  
Apr, May, June & Sept:  
Tues to Sun, 10:00–17:00h  
Jul & Aug:  
Open 7 days a week, 10:00–18:00h  
Oct to Mar:  
Limited opening hours. Please check website



**Admission Rates**  
Adult €10, Child €3, Child (U5) Free  
Family (2+2) €22, (2+3) €25



**Information**  
Online booking  
[www.fanadlighthouse.com](http://www.fanadlighthouse.com)  
Children must be 1.2m to climb tower



**Parking**  
Parking on site



# Glenveagh National Park Pairc Náisiúnta Ghleann Bheatha

Letterkenny, Co. Donegal

## Conserving plants, animals and landscapes



Glenveagh National Park lies in the heart of the Derryveagh Mountains in the North-West of County Donegal. It is a remote and hauntingly beautiful wilderness of rugged mountains and pristine lakes. The Park, over 16,000 hectares is the former Glenveagh Estate,

including most of the Derryveagh Mountains.

The wild setting around Lough Veagh hosts the largest herd of Red Deer in Europe and since 2001 is home to Ireland's only Golden Eagles.

The Castle is surrounded by extensive, ornate and renowned gardens, with a rich variety of

trees, shrubs and flowers from around the world.

There is a beautifully located tearoom in the castle courtyard open all year round, where one can enjoy delicious home baking freshly made in the castle kitchen.

## Visiting



**Contact**  
Glenveagh National Park  
Churchill, Letterkenny  
Co. Donegal, F92 P993  
Tel: 076 100 2537  
Intt: +44 76 100 2537  
glenveaghbookings@ahg.gov.ie  
www.glenveaghnationalpark.ie



**Location**  
24km north-west of Letterkenny and can be reached via the villages of Kilmacrennan or Churchill



**SatNav: Latitude/Longitude**  
55.0595, -7.9393



**Opening Times**  
The park is open all year round  
Visitor facilities: 09:00–17:00h



**Admission Rates**  
National Park & Visitor Centre: Free  
Castle Tour: Adult €7, Senior/Student/Child (6+yrs) €5, Family €15  
Admission to castle is by guided tour only and takes approx. 30mins



**Parking**  
On-site car park





# Glebe House & Gallery

## (The Derek Hill Collection)

Letterkenny, Co. Donegal

A Regency House dated 1828, set in woodland gardens, decorated with William Morris textiles, as well as Islamic and Japanese art. The collection includes 300 works by leading 20th century artists; Picasso, Kokoshka and also Irish and Italian artists. Exhibitions are shown in the adjoining gallery. Access to ground floor of the Gallery for people with disabilities.



## Visiting



**Contact**  
Glebe House and Gallery  
Churchill, Letterkenny  
Co. Donegal, F92 WP70  
Tel: 074-913 7071  
Int: +353 74 913 7071  
glebegallery@opw.ie  
www.heritageireland.ie



**SatNav: Latitude/Longitude**  
54.9520, -7.7308



**Opening Times**  
Please see [www.glebegallery.ie](http://www.glebegallery.ie) for detailed opening times



**Admission Rates**  
Adult €5, Senior €4  
Child/Student €3, Family €13  
Gallery Free of Charge



**Parking**  
Car & coach parking available

# Newmills Corn & Flax Mills

Letterkenny, Co. Donegal

With the oldest surviving building said to be 400 years old this whole complex is an interesting reminder of a stage in the industrial development of Ireland, which has given way to a more sophisticated, but far less fascinating technology. Experience the pleasure of seeing one of the largest waterwheels in Ireland in action as it drives the machinery of the corn mill.



## Visiting



**Contact**  
Newmills Corn and Flax Mills  
Churchill Road, Letterkenny  
Co. Donegal, F92 F205  
Tel: 074-912 5115  
Int: +353 74 912 5115  
newmills@opw.ie  
www.heritageireland.ie



**SatNav: Latitude/Longitude**  
54.9292, -7.8082



**Opening Times**  
May 21 to Sept 30  
Daily 10:00–18:00h  
Last admission 45 mins before closing



**Admission Rates**  
Free of Charge



**Parking**  
Parking available

# Donegal Castle

Donegal Town, Co. Donegal

Built by the O'Donnell chieftain in the 15th century this Castle has extensive 17th century additions. It is furnished throughout and includes Persian rugs and French tapestries. Information panels chronicle the history of the Castle owners from the O'Donnell chieftains to the Brooke family. Limited access for people with disabilities.



## Visiting



**Contact**  
Donegal Castle  
Donegal Town  
Co. Donegal, F94 P996  
Tel: 074-972 2405  
Int: +353 74 972 2405  
donegalcastle@opw.ie  
www.heritageireland.ie



**SatNav: Latitude/Longitude**  
54.6550, -8.1105



**Opening Times**  
Easter to mid-Sept, Daily 10:00–18:00h  
Mid-Sept to Easter, Thu–Mon  
09:30–16:30h  
Last admission 45 mins before closing



**Admission Rates**  
Adult €5, Child/Student €3  
Senior/Group €4, Family €13



**Parking**  
Car & coach parking available close to site



# Slieve League Cliffs

Teelin, Co. Donegal



## One of the highest and finest marine cliffs in Europe

Slieve League Cliffs, situated on the south west coast of Donegal, are one of the highest and finest sea cliffs in Europe.

At 601 metres (1,972 ft) views from here include Donegal Bay and surrounding counties Leitrim, Sligo and Mayo.

To the west is the Atlantic Ocean, and North west is Rathlin O'Byrne Island and Glencolmille. Nearby is Benbulbin with its megalithic tombs and mythical links to Finn McCool and the Fiona of old, and Knoch na Ri at Carrowmore where one of the largest and oldest known Neolithic cemeteries in Europe lies.

The area is full of history, Inishmurry—home to early Celtic Christian monks, and the port of Killala in Mayo—scene of the French landings in 1798, the remains of Ade McBric's chapel—an early Christian

monastic site, and ruins of the monks stone dwellings.

This is a sacred mountain, for over a thousand years there was a Christian pilgrimage, no doubt Slieve League was a sacred mountain before the Christians arrived here.

Please remember when visiting, not to disturb the monuments of Irish cultural heritage. There are no fences, so please respect the area.

If you wish to learn more, visit the Slieve League Cliffs centre.

## Visiting



### Contact

Slieve League Cliffs  
Teelin, Co. Donegal, F94 DH92  
Tel: 074 973 9077  
Int'l: +353 74 973 9077  
[www.slieveleaguecliffs.ie](http://www.slieveleaguecliffs.ie)



### Location

45 mins from Donegal Town on the N56 and R263  
20 mins from Killybegs on the R263



### SatNav: Latitude/Longitude

54.6343, -8.6460



### Information

Café & Craft Shop



### Parking

Car parking available





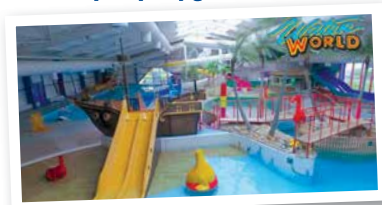
# Waterworld & Bundoran Seaweed Baths

Bundoran, Co. Donegal



## Ireland's premier indoor aqua playground

**Waterworld** is Ireland's premier indoor aqua adventure playground. Enjoy the waves without the sand and the heat without the sunscreen! Recipients of the Ireland Active "National Quality Standard" Award—ensuring your family experience will be of the highest standard!



### Bundoran Seaweed Baths

"A Natural, Healthy and Organic experience"

Nestled in the heart of the Wild Atlantic Way with stunning views of Donegal Bay. Enjoy a tranquil environment where you can soak away your aches and energise your body. Unwind in an individual or dual room with complimentary seaweed facemask. Complete your experience with a saltwater drench shower and post bath seaweed serum!

"Fantastic Family Fun" Facilities;

- Four great Flumes—Whizzer, Tornado, Twister, and Gravity!
- Wave Pool & Slide Pool
- Rapids
- Multi-Lane Slide
- Pirate Ship
- Toddler Pool
- Aqua Slide
- And many more great Child friendly features!

## Visiting



### Contact

Waterworld, Atlantic Way  
Bundoran, Co. Donegal, F94 DR9V  
Tel: 071 984 1172  
Int: +353 71 984 1172  
info@waterworldbundoran.com  
www.waterworldbundoran.com



### Location

Sea Front Atlantic Way Bundoran



**SatNav: Latitude/Longitude**  
54.4807, -8.2788



### Opening Times

Easter Daily From Good Friday 12:00–18:00h. April, May, Bank Hols (ROI) and first 2 weekends Sept  
June Mon to Fri 11:00–17:00h  
Sat to Sun 12:00–18:00h  
July & Aug Daily 10:00–18:00h  
Last entry 1 hour before closing



### Admission Rates

Adult €13.50, Child (8–17yrs) €12.50  
Child (3–7yrs) €11, Child (U3) Free  
**Family Passes available.** Groups €9.50  
Senior €8. Additional needs €8  
Carers go free. Parent/carer (8–12yrs) must sign consent form and leave contact details



### Information

Vending. Café facility Jul/Aug only



### Parking

Seasonal paid parking on-site  
Free parking at West End Car Park



# Blue Flag Beaches of Donegal

## Enjoy a day at the beach



With such an extensive coastline around Donegal, you would expect to find quality beaches... and you won't be disappointed. The naturally stunning formations of the coastline provide long stretches of golden sand and impressive sand dunes.

With several beaches meeting the Blue Flag standard you are

certain to never be far away from a great day out at the beach.

The miles of beaches are great for swimming, exploring rock pools and all sorts of beach fun. There are plenty of water activities to be enjoyed from sub-aqua, sailing, diving, water skiing, rowing, canoeing, land yachting and surfing. Go dolphin or whale watching or relax with the many boat experiences and cruises available. If you enjoy the great outdoors, there's no better place for a holiday or a day out. There's so much to see and do!

## Visiting



### Contact

For up-to-date listings of current Blue Flag Beaches please drop into any visitor information centre  
www.blueflag.org



### SatNav: Latitude/Longitude

Carrickfinn: 55.0438, -8.3401  
Cludaff: 55.2859, -7.1651  
Dowings: 55.1945, -7.8340  
Fintra: 54.6523, -8.4951  
Killahoey: 55.1885, -7.9553  
Magherawardan: 55.1824, -7.6057  
Marble Hill: 55.1771, -7.9024  
Murvagh: 54.5945, -8.1646  
Portnoo/Naran: 54.8400, -8.4631  
Rathmullan: 55.1267, -7.5538  
Rossnowlagh: 54.5510, -8.2111  
Shroove: 55.2295, 6.9318





# Belleek Pottery

Belleek, Co. Fermanagh

HeritageISLAND  
IRELAND'S PREMIER ATTRACTIONS



## Award-Winning Visitor Attraction

Belleek Pottery Visitor Centre is a memorable experience, like no other. An award-winning visitor attraction, it is Ireland's oldest working pottery. Visitors enjoy the combined presentation of industrial heritage, design and craftsmanship. Visitor Centre Guides will take you on a 30-minute pottery tour where you will see the 16 steps of how this world famous product has been created since 1857. Visitor participation is encouraged throughout the tour, glazing product and breaking imperfect pieces.

Children visiting Belleek enjoy following Bloomfields Trail. Called after John Caldwell Bloomfield, founder of Belleek Pottery, the trail has been developed to accommodate younger visitors to the pottery visitor centre telling the story of how the pottery is made using the character of Mr Bloomfield.

Once your tour is complete you may have time to enjoy some refreshments in the restaurant where all food is served on Belleek Tableware. The restaurant overlooks the banks of Lough Erne. Finally, indulge in a little shopping from the vast range of specially designed products, many of which are handmade in Belleek.

On-site facilities include:

- Belleek Retail Showroom
- Belleek Self Service Restaurant (Seats 90)
- Pottery Museum of Belleek Artefacts
- Rose Isle Garden and Picnic Area
- Audio Visual Presentation available in 8 languages
- Bloomfield's trail animated Children's Tour
- ONE SIXTY photographic exhibition



## 4 star grading

The Northern Ireland Tourist Board have awarded the Belleek Pottery Visitor Centre a 4 star grading.

NITB's Quality Grading Scheme for Visitor Attractions is designed to provide visitors with quality grading information on Northern Ireland's tourist attractions, whilst assisting operators to maintain and continually improve the quality of their offering.

## Visiting



### Contact

Belleek Pottery Ltd, 3 Main Street, Belleek, Co. Fermanagh, N.Ireland BT93 3FY  
Tel: 028 6865 9300  
or 028 6865 8501  
Int: +44 28 6865 9300  
or +44 28 6865 8501  
takehetour@belleek.ie  
www.belleekpottery.ie



### Location

From Enniskillen follow A46 to Belleek. From Dublin, take the N3 to Enniskillen. From Belfast, take M1 to Ballygawley and A4 to Enniskillen



**SatNav: Latitude/Longitude**  
54.4790, -8.0932



### Opening Times

Open All year round Mon to Fri 09:00-17:30h and weekends from March to Dec  
Tours: Mon to Fri Year round Sat Sun to Sept. No tours on Sun  
Details on web  
Open Good Friday and Easter Monday (no tours on these days)



### Admission Rates

Adult £6, Senior/Student £4  
Child (U12) Free



### Information

Restaurant, Shopping, Museum, Multilingual AV & Visitor Guides



### Parking

Car and coach parking available





# Castle Archdale Country Park

Enniskillen, Co. Fermanagh

## Country Park on the Shores of Lower Lough Erne



Visitors can enjoy walks in the park that will take you past the lough shore, the deer park enclosure, wildfowl ponds, wildflower meadow and butterfly garden.

Throughout the park evidence of the 1939-45 War can be found. During the war Lough Erne played an important role as the most westerly flying-boat station. Today visitors can explore ammunition dumps, flying-boat docks, slit trenches

etc. Families may also enjoy a cycle trail waymarked around the park.

A must see for all visitors is the Archdale Centre, which contains various exhibitions including 'Castle Archdale at War'. The exhibition highlights Castle Archdale's important role in WW2 as the most westerly flying-boat station, from which aircraft protected the allied convoys from the U-boat threat in the North Atlantic.

## Visiting



**Contact**  
Castle Archdale Country Park  
Rossmore  
Lisnarick, Enniskillen  
Co. Fermanagh  
BT94 1PP  
Tel: 028 6862 1588  
Int: +44 28 6862 1588



**Location**  
Located off B82 Enniskillen to Kesh Road, 10 miles from Enniskillen, 5 miles from both Kesh & Irvinestown



**SatNav: Latitude/Longitude**  
54.4777, -7.7283



**Opening Times**  
Country Park open year round  
Facilities available 10:00-17:00h



**Admission Rates**  
Free



**Information**  
Tea Rooms & Shop (seasonal opening)



**Parking**  
Car & coach parking (in Courtyard)



# Lough Erne

Enniskillen, Co. Fermanagh

Upper and Lower Lough Erne are widened sections of the River Erne with the town of Enniskillen situated on the short stretch of the river between the lakes. An area popular for angling and watersports with waterskiing, rowing, canoeing, sailing and wakeboarding being amongst the most popular. Castles, museums, monastic settlements and round towers are located on the many islands in the area. Spend a few hours or even moor up for an overnight adventure on some of the islands. Popular for cruising holidays, this is a hub for boating enthusiasts.



## Visiting



**Contact**  
Lough Erne  
Enniskillen  
Co. Fermanagh



**Location**  
Enniskillen is about 2 hours drive from Belfast and 2 & 1/2 hours from Dublin



**Information**  
Lough Erne is approximately 40 miles (64km) long and has an average width of 5 miles (8km)  
Further information available at [www.fermanaghlakelands.com](http://www.fermanaghlakelands.com)





# Enniskillen Castle and Heritage Town

Enniskillen, Co. Fermanagh

HeritageISLAND  
IRELAND'S PREMIER ATTRACTIONS

Enniskillen, Ireland's only island town, is the county town of Fermanagh. Enniskillen Castle, which was built 600 years ago by the Gaelic Maguires, was strategically important throughout its history, and now houses Fermanagh Visitor Information Centre, Fermanagh County Museum and the Inniskillings Museum. The site re-launched in August 2016. 7 new galleries interpret Fermanagh's rich heritage and a genealogy service is available 3 afternoons/week. Café and Shop on-site.



## Visiting



### Contact

Enniskillen Castle and Heritage Town  
Enniskillen, Co. Fermanagh, BT74 7HL  
Tel: 028 6632 5000  
Int: +44 28 6632 5000  
castle@fermanaghomagham.com  
www.enniskillencastle.co.uk



**SatNav: Latitude/Longitude**  
54.3461, -7.6444



### Opening Times

Year Round: Mon to Fri 9:30-17:00h, Sat 11:00-17:00h  
Jun to Sept, Sun 11:00-17:00h  
\*09:30h Visitor Centre open  
10:00h for museum galleries



### Admission Rates

Adult £5, Child £3.50, Child US Free  
Senior/Student £3.50  
Family (2+2) £13.50



### Parking

Free parking available

# The Buttermarket Craft & Design Courtyard

Enniskillen, Co. Fermanagh



## Craft & Design Centre

Housed in the restored early 19th century dairy market, Buttermarket Craft & Design Courtyard comprises of seventeen art and craft units, a coffee shop and a gift shop. The buildings have been tastefully renovated and add to the shopping experience.

Buttermarket is the central focus for the thriving craft industry in Fermanagh as it is situated in the heart of Enniskillen.

A number of crafts such as pottery, fly-tying, ceramics,

handmade jewellery, textiles, picture framing and original art can be found in the beautifully renovated buildings.

Visitors can enjoy the relaxed atmosphere of the Buttermarket, while being surrounded by a feast of contemporary and inspirational gifts from the shops, studios and galleries of some of Ireland's top crafts people and artists. While at the centre enjoy tasty and delicious homemade fayre from Rebecca's Coffee Shop.

## Visiting



### Contact

The Buttermarket Craft & Design Courtyard, Down Street, Enniskillen Co. Fermanagh, BT74 7DU  
Tel: 028 6632 3117  
Int: +44 28 6632 3117



### Location

The Buttermarket Craft & Design Courtyard is located in the heart of Enniskillen. The town is located almost exactly in the Centre of the County on the natural island which separates the Upper and Lower sections of Lough Erne



**SatNav: Latitude/Longitude**  
54.3463, -7.6381



### Opening Times

Open 10:00-17:30h, Monday to Saturday all year round



### Admission Rates

Free



### Information

Rebecca's Coffee Shop & Boston Quay treasure house



### Parking

Free Parking





# Drumlane Abbey & Round Tower

Milltown, Co. Cavan

## An ancient monastic site



Overlooking Garfinny Lough, the Abbey, Church and Round Tower believed to have been founded by St. Colmcille, date back to 555 AD. Originally wooden buildings, these were replaced by stone in the 12th Century, and later added to in the 15th Century. Different types

of stone were used in each century, which can clearly be seen when viewing the Round Tower. Towers were erected between the 5th and 13th centuries and are of Christian and ecclesiastical origin. They served as belfries and security for secret utensils, books, relics and

other valuables in case of sudden attack. The entrance to the tower is about 9 feet from the ground. Breath-taking views over the lake, along with the peaceful countryside, make this site a wonderful natural retreat.

## Visiting



**Contact**  
Drumlane Abbey & Round Tower  
Milltown  
Co. Cavan  
info@thisiscavan.ie  
www.thisiscavan.ie



**Location**  
Located just outside the village of Milltown



**SatNav: Latitude/Longitude**  
54.0583, -7.4790



**Parking**  
Parking available on-site



# The Cathedral of Saint Patrick and Saint Felim

Farnham Street, Cavan

## An historic and spectacular Cathedral

Also known as Cavan Cathedral, this Roman Catholic cathedral is located in Cavan town. With its 68m spire and flanking domes, this is one of the most impressive and eye-catching buildings in the town. Completed in 1942 the vast interior is shaped like a basilica and extensive use is made of different colours of marble. The cathedral houses many fine examples of ecclesiastical art and is neo-classical in style with a single spire. The portico consists of a tympanum supported by four massive columns of Portland stone with Corinthian caps. The tympanum figures of Christ, St Patrick and St Felim were created by the Dublin sculptor, Edward Smith. The twenty



eight columns in the Cathedral, the pulpit on the south side and all the statues are of Pavinazetto marble and came from the firm of Dinelli Figli of Pietrasanta in Italy.

## Visiting



**Contact**  
The Cathedral of Saint Patrick and Saint Felim  
Farnham Street  
Cavan  
Co. Cavan, H12 X977  
049-433 1496  
pastoralcentre@kilmorediosese.ie  
www.kilmoredpc.ie



**Location**  
Located in Cavan town



**SatNav: Latitude/Longitude**  
53.9951, -7.3617



**Information**  
Mass times  
Sun: 10:00 & 11:30h  
Sat: 19:30h



**Parking**  
Pay & display street parking, car parks also available





# Rossmore Forest Park

Monaghan Town, Co. Monaghan

The park covers over 320 hectares with many forest and lakeside walks, a wonderful play park for children, a giant sculpture trail and remnants of its past life as an estate. The walks range in length from two to four miles and are well posted. The most scenic walk, only 3 miles long, is the Priestfield, with a colonnade of yews and leads past the Rossmore family crypt. Fine specimens of oak, ash, spruce, beech, larch and giant redwood are on show, with extensive plantings of rhododendron in full bloom early summer.



## Visiting



**Contact**  
Rossmore Forest Park  
Monaghan Town  
Co. Monaghan  
Tel: 047-81122 (Tourist Office) Jun to Sept  
[www.collite.ie](http://www.collite.ie)



**SatNav: Latitude/Longitude**  
54.2329, -6.9993



**Information**  
Public toilets, picnic tables, walking trails  
Part of the forest has a cycle friendly trail as part of a long distance route  
Open from 8am (daylight hours)  
Free Admission



**Parking**  
On-site car parking

# Clones Heritage Town

Clones, Co. Monaghan

**HeritageISLAND**  
IRELAND'S PREMIER ATTRACTIONS

Home to Clones lace, this heritage town is an old Monastic settlement dating from the 6th century with interesting, easily accessible, historic sites all located within the town centre. Journey back in time with local guides on a Walking Tour of the town. Unique attractions include the Clones Lace Museum in the Ulster Canal Stores and the Cassandra Hand Folk & Famine Centre.



## Visiting



**Contact**  
Clones Heritage Town  
Clones  
Co. Monaghan, H23 DN76  
Tel: 047-52125  
Int: +353 47 52125  
[ulstercanalstores@outlook.com](mailto:ulstercanalstores@outlook.com)  
[www.monaghantourism.com](http://www.monaghantourism.com)



**SatNav: Latitude/Longitude**  
53.9779, -6.7188



**Opening Times**  
Ulster Canal Stores: Tues–Sat 09:00–18:00h  
Cassandra Hand Folk & Famine Centre:  
May to Sep, Mon–Fri 10:00–16:00h  
Oct to Apr, by Appointment



**Admission Rates**  
Free admission



**Parking**  
Free parking available throughout Clones

# Carrickmacross Heritage Town

Carrickmacross, Co. Monaghan

**HeritageISLAND**  
IRELAND'S PREMIER ATTRACTIONS



A bustling market town with a range of heritage sites to be explored, offering you a glimpse into the past. Visit the Carrickmacross Workhouse for an evocative experience of times past; browse through the wonderful Collective at Market Square; hear the story of the famous Carrickmacross Lace or take a guided walking tour.

## Visiting



**Contact**  
Carrickmacross Heritage Town  
Carrickmacross  
Co. Monaghan, H18 YT50  
Tel: 042-966 4176  
Int: +353 42 966 4176  
[info@carrickmacrossworkhouse.com](mailto:info@carrickmacrossworkhouse.com)  
[www.monaghantourism.com](http://www.monaghantourism.com)



**SatNav: Latitude/Longitude**  
53.9779, -6.7188



**Opening Times**  
Lace Gallery and Collective at Market Square: Open Mon–Sat  
Workhouse : Open Mon–Fri  
Guided Walking Tours: 11:00h Saturdays  
Apr to Oct



**Admission Rates**  
See website for further details



**Parking**  
Free parking available at Carrickmacross Workhouse





# Ulster American Folk Park

Omagh, Co. Tyrone

HeritageISLAND  
IRELAND'S PREMIER ATTRACTIONS

Immerse yourself in the story of Irish emigration at the museum that brings it to life. Experience the adventure that takes you from the thatched cottages of Ulster, on board a full-scale emigrant sailing ship, to the log cabins of the American Frontier. Meet an array of costumed characters along the way with traditional crafts to show, tales to tell and food to share. Museum Highlights: A Step in Time: the Story of Irish Dance at home and away.



## Visiting

### Contact

Ulster American Folk Park  
2 Mellon Road, Castletown  
Omagh, Co. Tyrone, BT78 5QU  
Tel: 028 8224 3292  
Int: +44 28 8224 3292  
info@nmni.com  
www.nmni.com

**SatNav: Latitude/Longitude**  
54.6588, -7.3354

### Opening Times

Mar to Jun & Sep:  
Tue to Sun 10:00–17:00h  
Jul & Aug: Mon to Sun 10:00–17:00h  
Oct to Feb: Tue to Fri 10:00–16:00h  
Sat & Sun 11:00–16:00h  
Closed Mondays except Bank Holidays

### Admission Rates

Adult £9, Child £5.50 Child (US) Free  
Concession £7, Family (2+3) £25

### Parking

Coach & Car parking available



# An Creagán

Creggan, Co. Tyrone

Explore. Shop. Play



An Creagán is located between the historic town of Omagh and the market town of Cookstown at the foothills of the majestic Sperrin Mountains. The site offers a range of facilities and activities for families, couples, individuals and groups.

Amongst this area of stunning natural beauty visitors will find stunning landscapes, wonderful wildlife, exciting outdoor activities and family fun.

There are many walks and cycle trails on the grounds or enjoy

a picnic by the community garden and duck pond.

Visit the interpretative exhibition on site before going on a journey of exploration of the wider region. The exhibition interprets the prehistoric monuments, natural environment, heritage and culture of the Creggan region. The exhibition is presented with wall mounted illustrations and information, selection of artefacts, short films and touch screen information.

## Visiting

### Contact

An Creagán, Creggan  
Omagh, Co Tyrone, BT79 9AF  
Tel: 028 8076 1112  
Int: +44 28 8076 1112  
info@ancreagan.com  
www.an-creagan.com

### Location

Located on the A505, mid way between the historic town of Omagh and the market town of Cookstown at the foothills of the majestic Sperrin Mountains

**SatNav: Latitude/Longitude**  
54.6633, -7.0358

### Opening Times

Café open daily 10:00–15:00h  
Restaurant open:  
Fri & Sat 10:00–21:00h  
Sunday 10:00–15:00h & 17:00–20:00h  
Visitor Centre & Exhibition open daily 11:00–17:00h

**Admission Rates**  
Free

### Information

Exhibitions  
Licensed Restaurant  
Craft & Gift Shop

### Parking

Parking available. Centre opening hours apply





# Armagh

## Armagh City

HeritageISLAND  
IRELAND'S PREMIER ATTRACTIONS

### The First Place

A majestic landscape, rich in cultural heritage and mythical legends. Set amidst the splendour of rolling drumlins, parks, open spaces & legendary orchards. Visit Armagh's places and people. Immerse yourself in their world.

There are many special things to experience in Armagh, ranging from the historically unique Navan Fort, two Saint Patrick's Cathedrals, Ireland's only Planetarium, Irish Fusiliers Museum, Armagh County Museum, No 5 Vicars' Hill, the Cardinal O'Fiaich Memorial Library and Archive, the Milford House Collection, Armagh Public

Library, unmatched Georgian architecture, the amazing green space of the Mall and the chance to indulge in all manner of activities in a beautiful natural environment.

Key events in Armagh include Saint Patrick's Festival (March), Food & Cider Festival (September), and Georgian Festival (November).



## Visiting



### Contact

Armagh Visitor Information Centre  
40 English Street, Armagh BT61 7BA  
Tel: 028 3752 1800  
Intl: +44 28 3752 1800  
info@visitarmagh.com  
www.visitarmagh.com



### Location

40 miles from Belfast, 85 miles from Dublin



**SatNav: Latitude/Longitude**  
54.3493, -6.6545

### Opening Times

Attractions throughout the city centre have various opening times. For information about attractions and events go to [www.visitarmagh.com](http://www.visitarmagh.com)



### Information

Armagh is family-friendly. Leisure facilities include swimming pool, planetarium and theatre with wide range of kids arts, crafts and drama. Play park in the Palace Demesne has walks, an orienteering trail and sensory garden



### Parking

Free and paid for car parking in the City. Coach parking at various attractions. Drop off points in city



# Armagh County Museum

## Armagh City

### The Oldest County Museum in Ireland



The collections at Armagh County Museum capture centuries of stories relating to the people who lived, worked and had connections with this famous city and historic county. With collections ranging from local history and fine art, to archaeology and natural history, this is the ideal place to experience a flavour of the

famous 'Orchard County'.

Some of the most intriguing stories of local lives are interwoven amid the diverse displays. From splendid wedding

dresses and rural crafts to fine military uniforms, each object conveys its own human story.

Working with the local community the museum provides a venue for a wide variety of exhibitions. The Museum is an ideal place to begin and explore the fair county of Armagh.

## Visiting



### Contact

Armagh County Museum  
The Mall East, Armagh, BT61 9BE  
Tel: 028 3752 3070  
Intl: +44 28 3752 3070  
[www.armagh.co.uk/armaghcountymuseum/](http://www.armagh.co.uk/armaghcountymuseum/)



### Location

On entering Armagh City the museum is located along The Mall East, between the old gaol and the courthouse



**SatNav: Latitude/Longitude**  
54.3493, -6.6494

### Opening Times

Open year round: Mon to Sat 10:00-17:00h, Sat 10:00-13:00h and 14:00-17:00h. Closed Sundays. Contact the museum for Christmas & New Year opening times



### Admission Rates

Free



### Information

Wheelchair access, with a ramp and lift to the first floor



### Parking

A disabled parking space is available opposite the Museum. Paid parking is also available close-by





# Saint Patrick's Cathedral Armagh

Armagh City

## Armagh's Anglican Cathedral

Saint Patrick's Church of Ireland Cathedral stands on the hill from which the City of Armagh derives its name—Ard Macha; the hill of Macha. Less than half a mile away on the adjoining hill is Saint Patrick's Roman Catholic Cathedral.

Both Cathedrals are part of the Northern Ireland Tourist Board's Saint Patrick's Trail.

Visitors to the cathedral are welcome to join any of the Sunday or daily services, or



just spend time either in quiet reflection or looking at the beautiful architecture.

Guided tours are available, please contact the Cathedral for further details.

## Visiting



### Contact

Saint Patrick's Cathedral Armagh  
Cathedral Close, Armagh, BT61 7EE  
Tel: 028 3752 3142  
Int: +44 28 3752 3142  
[www.stpatricks-cathedral.org](http://www.stpatricks-cathedral.org)



### Location

The Cathedral is located in Armagh City, the geographical heartland of Northern Ireland, a beautiful rural historic area served by the main motorway network in Northern Ireland



### SatNav: Latitude/Longitude

54.3477, -6.6562



### Opening Times

April to October 09:00–17:00h  
November to March 09:00–16:00h  
Group tours must be pre-arranged with the Cathedral Steward



### Admission Rates

Adult £3 Children Free



### Parking

City Centre



# Navan Centre & Fort—Emain Macha

Armagh City

HeritageISLAND  
IRELAND'S PREMIER ATTRACTIONS

## From where the ancient Kings of Ulster ruled...

Where myth and reality meet—the ancient seat of Kings and the earliest capital of Ulster. Immerse yourself in life 2,000 years with a visit to the Iron Age dwelling (Apr to Sept), where you will be welcomed into the clan with a cleansing ceremony & traditional purification involving smoke and fire!

Taste traditional homemade herb bread & mead and enjoy storytelling by the fire, including the tales of Ulster's greatest heroes and warriors. With archaeological evidence dating back to 95BC, experienced tour guides will accompany



you to what is undoubtedly one of Ireland's most famous sites, Emain Macha (Navan Fort). For children, the indoor and outdoor Archaeology Discovery space is a must-see, along with the Ecology trail to truly appreciate the diversity of wildlife in the area.

## Visiting



### Contact

Navan Centre & Fort - Emain Macha  
81 Killylea Road, Armagh, BT60 4LD  
Tel: 028 3752 9644  
Int: +44 28 3752 9644  
[navan@armaghbanbridgecraigavon.gov.uk](mailto:navan@armaghbanbridgecraigavon.gov.uk)  
[www.visitarmagh.com/navan](http://www.visitarmagh.com/navan)



### Location

1.5 miles from Armagh on the Killylea Road



### SatNav: Latitude/Longitude

54.3444, -6.7016



### Opening Times

Open year round  
Apr 01 to Sep 30: 10:00–17:30h  
(Last admission 16:00h)  
Oct 01 to Mar 31: 10:00–16:00h  
(Last admission 15:00h)



### Admission Rates

Please check website or telephone for details



### Information

Coffee shop, picnic area & gift shop  
Exhibition area. Various children's activities throughout



### Parking

Coach & Car parking available





# Discover Boyne Valley

County Meath and County Louth

**HeritageISLAND**  
IRELAND'S PREMIER ATTRACTIONS

## Birthplace of Ireland's Ancient East

Journey through time in the Boyne Valley. 5,000 years ago the first farmers in Ireland built the famous tombs at Newgrange and Knowth (accessible via the newly refurbished Brú na Bóinne visitor centre). Early Christian high crosses and round towers may be seen at Kells and Monasterboice while the largest Anglo-Norman castle in Ireland is situated in Trim. Oldbridge House offers a visitor centre for the monumental Battle of the Boyne which took place in 1690. Heritage and cuisine combine in Navan and Slane with gourmet restaurants



and artisan food producers; while nearby Drogheda boasts a buzzing arts scene as well as museums and galleries. The Boyne Valley is also the home of the ancient Samhain tradition, now showcased with the annual Spirits of Meath and Púca Halloween festivals.

## Visiting



**Contact**  
Boyne Valley Tourism  
Buvinda House  
Dublin Road, Navan  
Co. Meath, C15 Y291  
info@discoverboynevalley.ie  
www.discoverboynevalley.ie



**Location**  
Situated in the East of Ireland only 30 minutes from Dublin



**SatNav: Latitude/Longitude**  
53.6427, -6.6666



**Information**  
So much to see and do, from historic sites to family adventures. Excellent accommodation and food options. Download the Discover Boyne Valley App or call into one of the tourist information offices. See discoverboynevalley.ie for details



# Old Mellifont Abbey

Drogheda, Co. Louth

## The first Cistercian Monastery in Ireland



Little of the original Abbey now remains, although visitors can see one of its most unusual features; an octagonal lavabo c. 1200. This lavabo was used by the monks to wash their hands before eating.

Mellifont Abbey, located close to the town of Drogheda in Co. Louth is the first Cistercian monastery in Ireland founded in 1142 by St Malachy of Armagh. The abbey sits on the banks of the River Mattock, approx 10 km north-west of Drogheda.

The Visitor Centre houses an interesting exhibition on the work of masons in the Middle Ages with fine examples of their craft on display. Access to site by stone stairway.

## Visiting



**Contact**  
Old Mellifont Abbey  
Tullyallen, Drogheda  
Co. Louth, A92 K682  
Tel: 041-982 6459  
mellifontabbey@opw.ie  
www.heritageireland.ie



**Location**  
10km north-west of Drogheda off the R168 (Drogheda-Collon Road)



**SatNav: Latitude/Longitude**  
53.7428, -6.4586



**Opening Times**  
May 30 to Sept 04  
Daily 10:00-18:00h  
Last admission 45 mins before closing



**Admission Rates**  
Adult €5, Senior/Group €4  
Child/Student €3, Family €13



**Information**  
Guided tours available on request  
Picnic area. Leaflet/Guide books available in English, Irish, French, German, Italian, Spanish  
To contact outside of opening hrs please call 041-988 0300



**Parking**  
Public car & coach parking





# Carlingford Lough Ferry

Greencastle, Co. Down



## An unforgettable voyage of discovery

Whether you're taking a day trip or enjoying a holiday break, the new Carlingford Lough Ferry is an unforgettable experience and a great adventure for the family. Located midway between Belfast and Dublin, Carlingford Lough Ferry connects the majestic Mountains of Mourne in Northern Ireland with the dramatic Cooley Peninsula at the beginning of Ireland's Ancient East in the Republic of Ireland. Surrounded by epic scenery and shrouded in mystery, with a rich tapestry of legend and folklore hidden in its hills. This largely undiscovered region is an area of outstanding natural beauty which can be enjoyed from the upper viewing deck of the car ferry. Enjoy the medieval town of Carlingford with its wonderful range of craft and curiosity shops, exquisite boutiques and delicious cuisine or for the more active, enjoy camping, cycling and mountain bike trails. Explore a much greater playground with

outdoor adventure, beaches, golf, nature, heritage and stunning scenery.

The Carlingford Lough Ferry connects a range of fantastic holiday activities on both sides of the Lough. Relax on Port Beach located a few short miles north of the fishing village of Clogherhead in Co. Louth or embrace the high-octane energy at the Funtasia Water Park in Drogheda and Tayto Theme Park in Co. Meath. Carlingford Lough ferry is your route to enjoy the best experiences during your vacation in Ireland.

**To plan your trip visit [www.carlingfordferry.com](http://www.carlingfordferry.com) and enjoy a 10% online booking discount.**



## Visiting



### Contact

Carlingford Lough Ferry  
Greencastle  
Co. Down BT34 4LR  
[info@carlingfordferry.com](mailto:info@carlingfordferry.com)  
[www.carlingfordferry.com](http://www.carlingfordferry.com)



### Location

From Belfast/Kilkeel, follow signs for Greencastle/Greencastle Castle, approx 4.8 miles south from Kilkeel town. Approx. 55 miles from Belfast City.



### SatNav: Latitude/Longitude

54.0386, -6.0957



### Sailing Times

Every hour on the hour from Greencastle. Every hour on the half hour from Greonore. Sailing times are subject to change. See website for timetable & live sailing status.



### Fares

Car Single: £13.50/€15  
Car Return: £22.50/€25  
For other ticket types please check [www.carlingfordferry.com](http://www.carlingfordferry.com) and avail of a 10% discount.



### Information

Toilets available in both terminal car parks.



### Parking

Car parking spaces are available for foot passengers.



**CARLINGFORD  
LOUGH FERRY**



# Mourne Mountains

Co. Down

“Where the Mountains of Mourne sweep down to the sea”



The Mourne Mountains are the highest and most dramatic mountain range in Northern Ireland, its summits crowned by granite tors. The mountains are criss-crossed by a network of paths and tracks and walking route cards are available from the visitor information centre in Newcastle. The routes provide enthusiastic walkers with incredible opportunities

for exploration across the distinctive summits of 12 mountains spanning 15 miles in length. The Mournes are divided into 2 distinctive areas—the Eastern or ‘High’ Mournes and the Western or ‘Low’ Mournes.

Any newcomer to the Mournes will be amazed at the variety of landscapes that can be encountered within such a confined geographical area.

Percy French’s song, ‘Where the Mountains of Mourne sweep down to the sea’ make them the best known mountains in Ireland.

## Visiting



**Contact**  
Mourne Mountains  
Co. Down  
[www.visitmournemountains.co.uk](http://www.visitmournemountains.co.uk)



**Location**  
The Mourne Mountains are in County Down, lying 31 miles (50km) south of Belfast and just over 62 miles (100km) north of Dublin



**SatNav: Latitude/Longitude**  
54.1533, -6.0663



**Information**  
Further information available  
Newcastle Visitor Information Centre  
10-14 Central Promenade, BT33 0AA  
028 4372 2222  
+44 28 4372 2222  
[newcastle.vic@mmandd.org](mailto:newcastle.vic@mmandd.org)  
[www.discovernorthernireland.com](http://www.discovernorthernireland.com)



# Tyrella Beach

Downpatrick, Co. Down

Stunning Blue Flag Beach



Tyrella beach can be found within Dundrum Bay, Downpatrick, County Down. It is an award-winning beach stretching for two kilometres and backed by 25 hectares of mature dunes.

Visitors can enjoy beautiful scenic walks and enjoy the habitat of local flora and fauna.

Facilities on the beach include:

safe bathing, dog free area, walks and tourist information.

The clean waters invite water sport enthusiasts and the beach provides a safe

haven for families and groups who wish to picnic in a clean environment.

The Beach is owned and managed by Down District Council.

Lifeguards patrol the beach daily during July and August.

## Visiting



**Contact**  
Tyrella Beach, Clanmaghera Road  
Downpatrick, Co. Down, BT30 8SU  
Tel: 028 4461 0800  
Int: +44 28 4461 0800  
[www.downdc.gov.uk](http://www.downdc.gov.uk)



**Location**  
Tyrella Beach is situated on the A2 Killough to Clough Rd 7 miles from Downpatrick and 12 miles from Newcastle



**SatNav: Latitude/Longitude**  
54.2536, -5.7469



**Information**  
Facilities include wheelchair access and toilets on site. Special disabled parking on the beach can be arranged



**Parking**  
Car park charges during summer season, special disabled parking on the beach can be arranged on request





# Murlough National Nature Reserve

Dundrum, Co. Down



## An extraordinarily beautiful dune landscape

On the coast of County Down lies the Murlough National Nature Reserve. The reserve offers a spectacular view of Slieve Donard, the highest peak in the Mourne Mountains and Dundrum Bay.

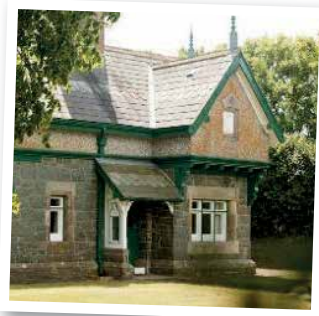
Since 1967 Murlough has been Ireland's first Nature Reserve, owned by the National Trust.

The 6,000 year old sand dune system provides an excellent area for walking and bird watching due to its spectacular location at the edge of Dundrum Bay and the Mourne Mountains.

Visitors will come across a network of paths and boardwalks through the dunes, woodland and heath. Along here they can enjoy an array of butterflies and wild flowers.

These walks will provide you with access to one of the finest beaches in Co. Down.

From the magnificent beach, sea watchers can observe more sea birds and in the summer and autumn both common and grey seals. The rich wildlife of this area changes with the seasons but there is always something of interest.



## Family & children

The main car park has a number of BBQ friendly picnic tables and a safe area for a football kick around. Feel free to spread a blanket on the beach too, but please take your litter home. Family fun events held over the summer. Children's nature trail quiz and activity packs.

## Visiting



### Contact

Murlough National Nature Reserve  
Keel Point, Dundrum  
Co. Down, BT33 0NQ  
Tel: 028 4375 1467  
Int: +44 28 4375 1467  
murlough@nationaltrust.org.uk  
www.nationaltrust.org.uk/murlough



### Location

Murlough lies just off the A2, the main Belfast to Newcastle road near Dundrum village. Look out for the signs



### SatNav: Latitude/Longitude

54.2243, -5.8761



### Opening Times

Access all year  
Facilities open weekends &  
Bank/Public Holidays  
Facilities open all week Easter and  
June to October



### Admission Rates

Free



### Information

Beach Café



### Parking

The car park is open all year round with admission charged when facilities such as the Beach Café are open





# Exploris Aquarium

Portaferry, Co. Down

## Northern Ireland's only aquarium



A sunken galleon, friendly sharks, super cute seals and an Asian otter family all showcase in Northern Ireland's only aquarium.

Located in Portaferry on the shores of Strangford Lough, your journey will begin with a focus on the lough and Irish Sea where you will get a 'hands on' experience as you tickle

the belly of a small shark and feel the spikes on a sea urchin.

Continue to the colourful coral reefs of the Tropical Ocean and see if you can find 'Nemo' and 'Dory' before entering the

smugglers cove where sharks circle above you. Return to the shores to see the endangered but playful otters and witness conservation in action in the nursery seal pens and outdoor pools. Don't forget to explore the dark depths of the Reptile filled Rainforest where a snappy crocodile and green geckos hide.

## Visiting



### Contact

Exploris Aquarium  
The Rope Walk, Castle Street  
Portaferry, Co. Down BT22 1NZ  
Tel: 028 4272 8060  
Intt: +44 28 4272 8060  
info@explorisni.com  
www.explorisni.com



### Location

From Belfast take the A20 through Newtownards and on to Portaferry



**SatNav: Latitude/Longitude**  
54.3817, -5.5494



### Opening Times

Open 7 days a week, 10:00–17:00h  
(last admission 16:00h)



### Admission Rates

Adult £10.50, Child £9, Senior/  
Student £8.50, Family (2+2) £31.50  
Book online for discount!



### Information

Multi-tiered soft play zone from  
0–8 yrs. Café and restaurant  
overlooking the seal sanctuary. Gift  
shop on-site



### Parking

Public carpark adjacent to Exploris  
offers limited free parking

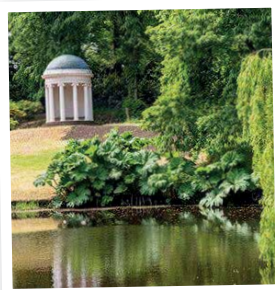


# Hillsborough Castle & Gardens

Hillsborough, Co. Down

HeritageISLAND  
IRELAND'S PREMIER ATTRACTIONS

Enjoy a majestic day out at Northern Ireland's Royal Residence. Hillsborough Castle showcases beautiful State Rooms and gives an intimate glimpse behind the scenes into the personal living quarters of a working royal household. 100 acres of wonder await in the castle's gardens to delight the senses. The gardens are bursting with colour and features including a Walled Garden and enchanting pinetum.



## Visiting



### Contact

Hillsborough Castle & Gardens  
The Square, Hillsborough  
Co. Down, BT26 6AG  
Tel: 033-3320 6000  
Intt: +44 33 3320 6000  
hillsboroughcastle@hrp.org.uk  
www.hrp.org.uk/hillsborough-castle



**SatNav: Latitude/Longitude**  
54.4630, -6.0891



### Opening Times

Opening times and days may vary  
Check website for further details



### Admission Rates

See website



### Parking

Free on-site parking. Main car park  
accessible from A1

# Belshaw's Quarry Sculpture Park

Lisburn, Co. Down

Comprising of 8 stunning and thought-provoking sculptures, the reserve has recently been designated as an Area of Special Scientific Interest due to the uniquely accessible series of geological features.





# Mount Stewart

Newtownards, Co. Down

HeritageISLAND  
IRELAND'S PREMIER ATTRACTIONS

Voted one of the world's top ten gardens, reflecting a rich tapestry of design and planting artistry bearing the hallmark of its creator. Edith, Lady Londonderry's passion for bold planting schemes, coupled with the mild climate of Strangford Lough, means rare and tender plants from across the globe thrive in this celebrated garden. Explore the exquisite house, a world-class collection of paintings and many other internationally significant items.



## Visiting



### Contact

Mount Stewart  
Newtownards, Co. Down, BT22 2AD  
Tel: 028 4278 8387  
Intl: +44 28 4278 8387  
mountstewart@nationaltrust.org.uk  
www.nationaltrust.org.uk



### SatNav: Latitude/Longitude

54.5516, -5.6021



### Opening Times

Open year round  
Check website for details



### Admission Rates

Adult £11.50, Child £5.75  
Family £28.75  
(Rates include voluntary Gift Aid)



### Parking

Coach & Car parking available

# Ulster Transport Museum

Holywood, Co. Down

HeritageISLAND  
IRELAND'S PREMIER ATTRACTIONS

Ulster Transport Museum tells the story of transport and social change in Ulster since the start of the modern era. It is a well of inspiration for the designers, engineers and adventurers of the future, creatively displaying one of Europe's largest and most comprehensive transport collections. Come and experience this incredible story for yourself.



## Visiting



### Contact

Ulster Transport Museum  
153 Bangor Road, Cultra  
Holywood, Co. Down, BT18 0EU  
Tel: 028 9042 8428  
Intl: +44 28 9042 8428  
info@nmni.com  
www.nmni.com



### SatNav: Latitude/Longitude

54.6491, -5.7989



### Opening Times

Mar to Sept, Tue to Sun  
10:00-17:00h  
Oct to Feb, Tue to Fri 10:00-16:00h  
Sat to Sun 11:00-16:00h  
Closed Mon except B/Holidays



### Admission Rates

Rates for park and museum  
Adult £9, Child £5.50 Child (U5) Free  
Concession £7 Family (2+3) £25



### Parking

Coach & Car parking available

# Ulster Folk Museum

Holywood, Co. Down

HeritageISLAND  
IRELAND'S PREMIER ATTRACTIONS

Ulster Folk Museum has rolling countryside and a bustling town filled with authentic period buildings. Step back in time and experience what life was like in rural Ulster over 100 years ago. Explore thatched cottages, farms, schools and shops. Chat to costumed visitor guides as they demonstrate traditional crafts and offer you freshly-baked treats in the Folk Museum.



## Visiting



### Contact

Ulster Folk Museum  
153 Bangor Road, Cultra  
Holywood, Co. Down, BT18 0EU  
Tel: 028 9042 8428  
Intl: +44 28 9042 8428  
info@nmni.com  
www.nmni.com



### SatNav: Latitude/Longitude

54.6491, -5.7989



### Opening Times

Mar to Sept, Tue to Sun  
10:00-17:00h  
Oct to Feb, Tue to Fri 10:00-16:00h  
Sat to Sun 11:00-16:00h  
Closed Mon except B/Holidays



### Admission Rates

Rates for park and museum  
Adult £9, Child £5.50 Child (U5) Free  
Concession £7 Family (2+3) £25



### Parking

Coach & Car parking available

# Pickie Funpark

Bangor, Co. Down

## Great family fun

Pickie Funpark is one of Northern Ireland's most popular visitor attractions providing a fun day out for all. Children can play in the adventure playground, enjoy the watery fun of the splash pads, enjoy a ride on the disco ducks or climb aboard the Pickie Puffer for a narrow-gauge railway journey around the colourful landscape. All the family can pedal a giant Swan around the shallow waters of the lovely Lagoon, compete with each other on the mini golf course or take a break in the café.



The park also features brightly coloured Victorian-style beach huts offering comfortable changing facilities whilst capturing the spirit of times past.

The fresh, modern café has a fantastic family friendly menu and boasts superb views over Bangor Marina and Belfast Lough.

## Visiting



### Contact

Pickie Funpark  
Marine Gardens, Bangor  
Co. Down, BT20 5AG  
Tel: 028 9145 0746  
Intt: +44 28 9145 0746  
hello@pickiefunpark.com  
www.pickiefunpark.com



### Location

From Bangor town centre follow the B20 to Princetown Road and continue to Marine Gardens



**SatNav: Latitude/Longitude**  
54.6647, -5.6747



### Opening Times

Open Daily Year Round  
Apr, May & Sept 09:00–19:00h  
Jun to Aug 09:00–21:00h  
Oct to Mar 09:00–16:00h



### Admission Rates

Free Admission but the individual attraction prices vary. See website for further details



### Information

On site café offering hot and cold food, snacks, drinks and ice-cream



### Parking

Public carpark on Queen's Parade. Disabled parking adjacent to Pickie Funpark can be accessed via Marine Gardens



# OPW

## BUY AN OPW HERITAGE CARD & EXPLORE IRELAND'S WONDERFUL HERITAGE



Jerpoint Abbey

Castletown House

Donegal Castle

Dún Aonghasa

Free admission to more than 45 of Ireland's finest heritage sites

### Unlimited access for up to one year

€40

Adult

€30

Senior

€10

Child/Student

€90

Family

Heritage Cards can be purchased at participating heritage sites

by phone: 01-647 6592 / Lo Call 1850-600 601

Find us on Facebook



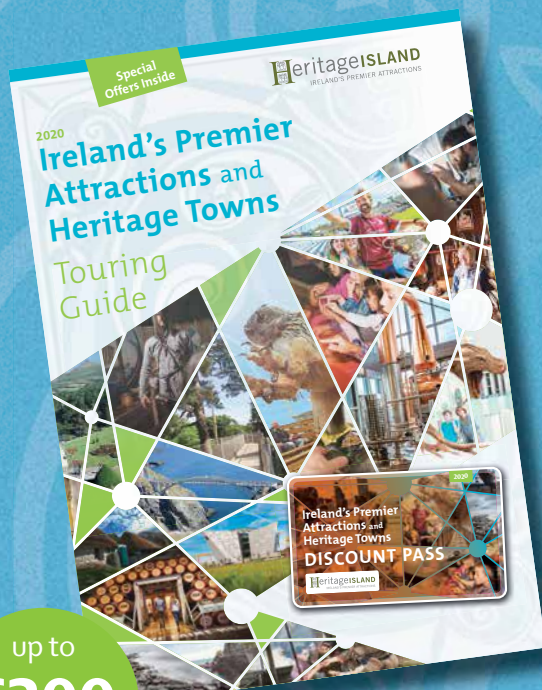
Full details: [www.heritageireland.ie](http://www.heritageireland.ie)



# HeritageISLAND

IRELAND'S PREMIER ATTRACTIONS

Museums Historic Houses Gardens  
Distilleries Heritage Towns Caves  
Interpretative Centres Family Days Out  
Castles Suggested Tour Itineraries



up to  
**€300**  
of discounts

at Ireland's leading visitor attractions.

Guides & Discount Pass, On-line Tickets & Events  
*details available at*  
**[www.heritageisland.com](http://www.heritageisland.com)**



Visitor Attractions Guides



Discount Pass



# Your Daily Adventure

## Ireland's North

## A-Z Index

Ref	Attraction	See page...	Ref	Attraction	See page...
21	17th Century Walls	18	24	Glenveagh National Park	19
41	An Creagán	28	16	Gracehill Village	15
12	Andrew Jackson Cottage & US Rangers Centre	13	8	The Great Light & Titanic Walkway	11
10	Antrim Castle Gardens	12	53	Hillsborough Castle & Gardens	35
42	Armagh	29	2	HMS Caroline	8
43	Armagh County Museum	29	32	Lough Erne	24
3	Belfast City Hall	8	20	Lough Foyle Ferry	17
4	Belfast City Sightseeing	9	14	Mid & East Antrim	14
30	Belleek Pottery	23	54	Mount Stewart	36
	Blue Flag Beaches Donegal	22	49	Mourne Mountains	33
	Blue Flag Beaches	13	51	Murlough National Nature Reserve	34
34	The Buttermarket Craft & Design Courtyard	25	45	Navan Centre & Fort-Emain Macha	30
48	Carlingford Lough Ferry	32	22	Ness Country Park	18
15	Carnfunnock Country Park	14	26	Newmills Corn & Flax Mills	20
39	Carrickmacross Heritage Town	27	47	Old Mellifont Abbey	31
31	Castle Archdale Country Park	24	57	Pickie Funpark	37
36	The Cathedral of Saint Patrick and Saint Felim	26	18	Rathlin West Light Seabird Centre	16
17	Causeway Coastal Route	15	37	Rossmore Forest Park	27
38	Clones Heritage Town	27	44	Saint Patrick's Cathedral Armagh	30
5	Crumlin Road Gaol	9	28	Slieve League Cliffs	21
46	Discover Boyne Valley	31	6	St. Anne's Cathedral	10
27	Donegal Castle	20	7	St. George's Market	10
35	Drumlane Abbey & Round Tower	26	1	Titanic Belfast	7
33	Enniskillen Castle and Heritage Town	25	50	Tyrella Beach	33
52	Exploris Aquarium	35	40	Ulster American Folk Park	28
23	Fanad Lighthouse	19	56	Ulster Folk Museum	36
11	Flame Gasworks	12	9	Ulster Museum	12
19	Giant's Causeway Visitor Experience	16	55	Ulster Transport Museum	36
25	Glebe House & Gallery	20	29	Waterworld & Bundoran Seaweed Baths	22
13	Glenoe Waterfall	14	Ireland's North Map of Attractions 4/5		



MAKERS OF THE

Authentic Claddagh Ring™

TAX FREE SHOPPING FOR NON EU RESIDENTS

SHOP ONLINE



CLICK & COLLECT

VISIT OUR STORES

25 MAINGUARD ST. GALWAY ☎ 091 562 310 2 GRAFTON ST. DUBLIN 2 ☎ 01 607 4018

📌 FB.COM/CLADDAGHJEWELLERS 📧 SHOP@THECLADDAGH.COM

WWW.THECLADDAGH.COM



LEGEND OF THE CLADDAGH RING™

VISITOR CENTRE GALWAY



GALWAY'S NEW AND EXCITING CLADDAGH RING VISITOR CENTRE AND WORKSHOP

Learn about the origins of Galway's iconic Claddagh ring which dates back over 300 years. Come and see where the Authentic Claddagh Ring™ is made.

26 SHOP STREET, GALWAY.

🌐 WWW.CLADDAGHLEGEND.COM 📌 FB.COM/CLADDAGHLEGEND