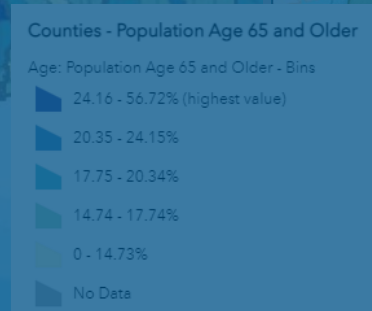


Resilience Analysis and Planning Tool (RAPT)

Community of Practice Webinar- January 2023
National Integration Center - Technical Assistance



FEMA



Choose an Indicator*

Disability_Pct

Help Run

Population Summary of Selected Indicator

10,551

Legend

Selected Census Tracts

- Nursing Homes
- Mobile Home Parks

NFHL - Flood Hazard Zones

- 1% Annual Chance Flood Hazard
- Regulatory Floodway
- Special Floodway
- Area of Undetermined Flood Hazard
- 0.2% Annual Chance Flood Hazard
- Future Conditions 1% Annual Chance Flood Hazard
- Area with Reduced Risk Due to Levee

RAPT Webinar Schedule

- RAPT overview
 - RAPT updates in 2022
- Interactive demonstration
 - RAPT functionality and data
 - Poll questions for participants
- RAPT support for hurricane response operations
 - Hurricane Ian- Florida
 - Deployed FEMA staff experience
- Questions and Connecting



RAPT helps you VISUALIZE and ANALYZE data for all phases of emergency management.



People and Community



Infrastructure

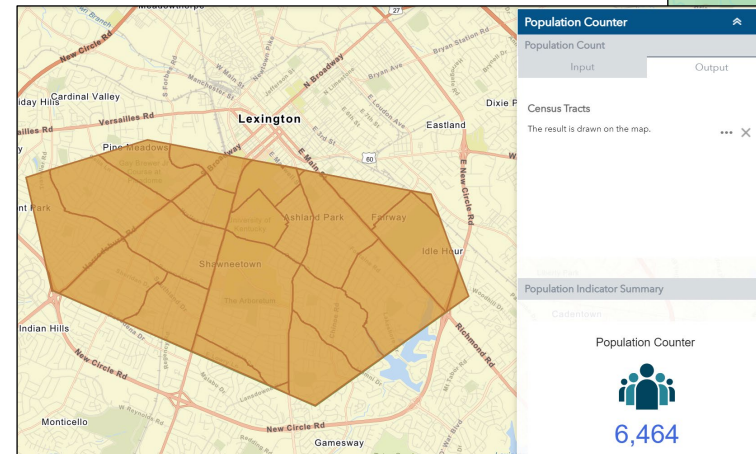
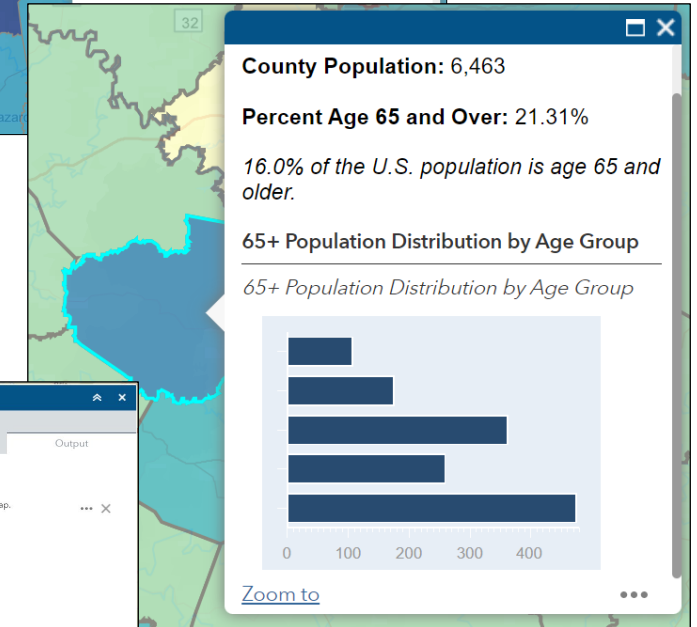
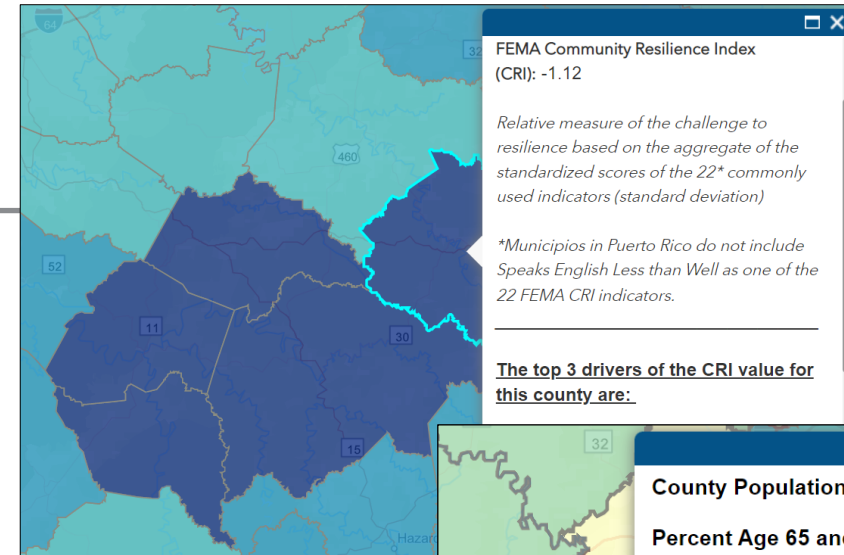


Hazards, Weather, Risk

- RAPT gives everyone a free, no-login required GIS capability.
- Over 100 pre-loaded GIS layers are easy to toggle on and off.
- Pop-up boxes with additional data information.
- Easy to use analysis tools: Incident Analysis, Population Counter, Filter.
- Add Data layers from ArcGIS Online, URLs or local files.
- Print or download results to spreadsheets.

RAPT Update 2022

- Developed new FEMA Community Resilience Index (CRI): county and census tracts
- Updated Data
 - ACS 5-yr estimates (2016-2020)
 - Pop-up Visualizations
- Analysis Tools
 - Filter, Incident Analysis, Population Counter
- RAPT Resource Center
 - Use Cases
 - Data Sources and FAQs
 - Instructional Video and User Guide



FEMA

2023 RAPT Data Layers: People and Community



Population Characteristics

- Population without a High School Education
- Population 65 and Older
- Population with a Disability
- Population by Race and Hispanic Origin

Household Characteristics

- Households without a Vehicle
- Households with Limited English
- Single-Parent Households
- Households without a Smartphone
- Households without Broadband Subscription

Housing

- Mobile Homes as Percentage of Housing
- Owner-Occupied Housing
- Rental Housing Costs
- Residential Structures in SHFA with Flood Insurance



Healthcare

- Number of Hospitals
- Medical Professional Capacity
- Population without Health Insurance
- Medicare Recipients with Power-Dependent Devices

Economic

- Population Below Poverty Level
- Median Household Income
- Unemployed Labor Force
- Unemployed Women Labor Force
- Income Inequality
- Workforce in Predominant Sector



Connection to Community

- Presence of Civic and Social Organizations
- Population without Religious Affiliation
- Percentage of Inactive Voters
- Population Change



FEMA

County and Census Tract Community Resilience Index (CRI) combining 22 indicators.

Infrastructure Layers: Homeland Infrastructure Foundation-Level Data Open

- Hospitals
- Nursing Homes
- Pharmacies
- Urgent Care Facilities
- Dialysis Centers
- Mobile Home Parks
- Fire Stations
- Local Law Enforcement Locations
- Public Health Departments
- 911 Service Area Boundaries
- SNAP Authorized Retailers
- Places of Worship
- Colleges and Universities
- Private Schools
- Public Schools
- Prison Boundaries
- Power Plants
- Electric Transmission Lines
- Wastewater Treatment Plants
- Solid Waste Landfills
- High-Hazard Dams

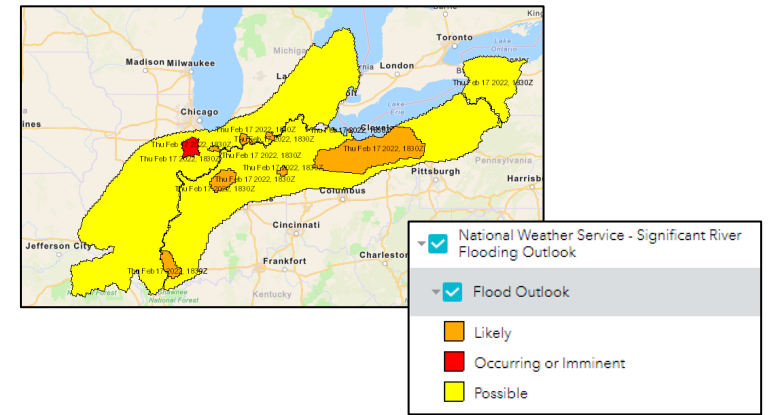
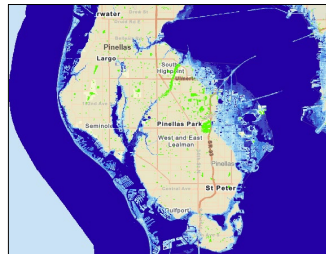
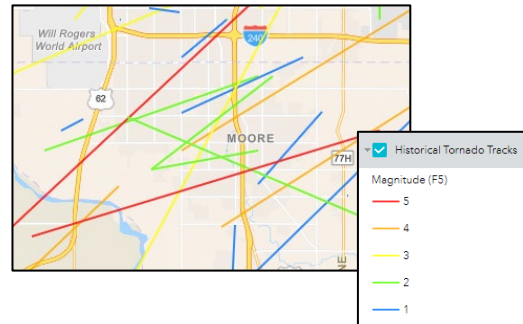
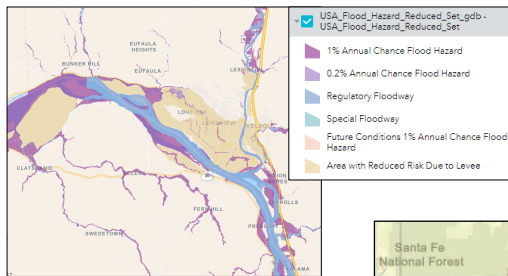


FEMA

Hazards, Weather, Risk

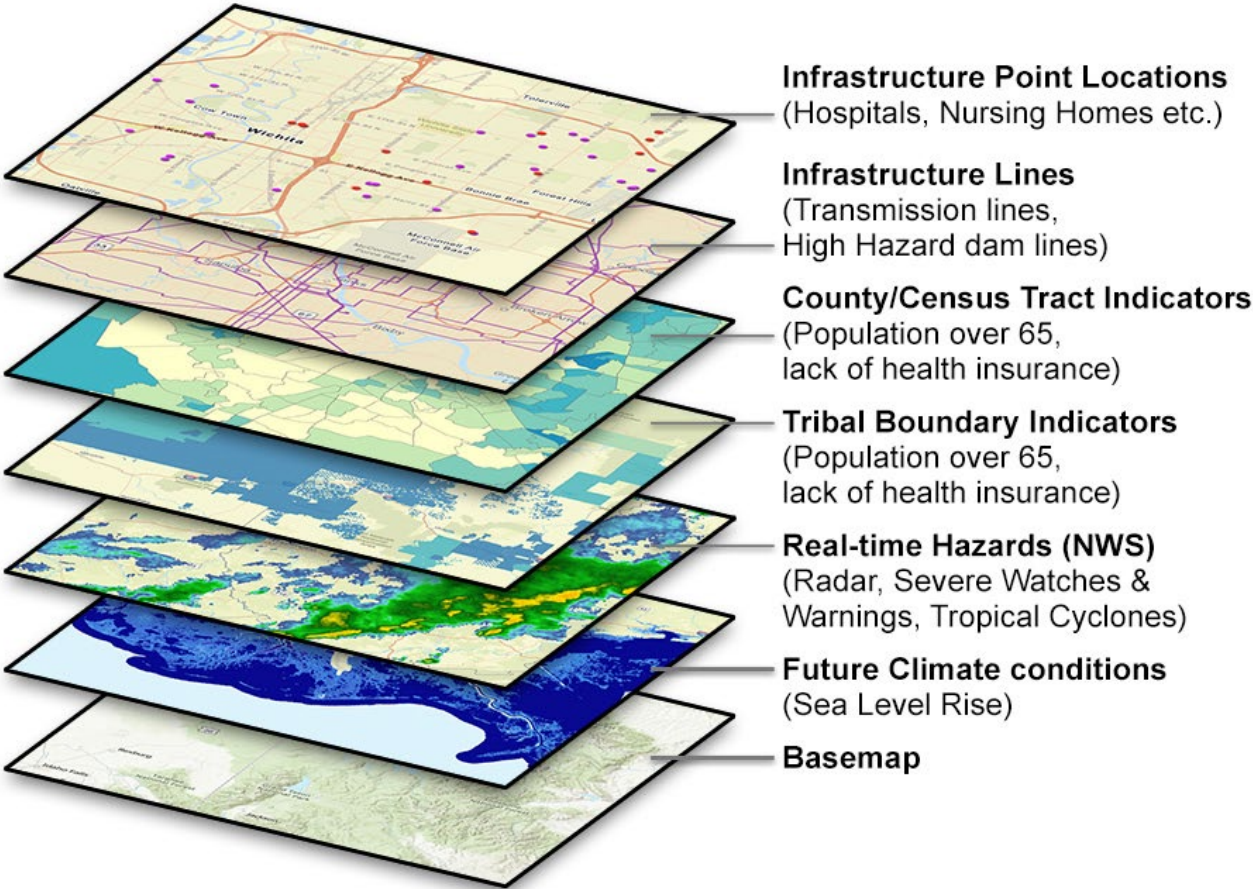
- Live Stream Gauges
- Flood Hazard
- Hurricane Tracks (1990+)
- Historical Tornado Tracks
- Wildfires – Current Incidents (Points)
- Wildfires – Current incidents (Perimeters)
- Seismic Hazard
- National Risk Index Census Tracts

- NOAA Sea Level Rise (4-6 ft.)
- NWS Severe Weather Watches and Warnings
- NWS Severe Weather Outlook
- NWS Atlantic/Caribbean Tropical Cyclones
- NWS Eastern Pacific Tropical Cyclones
- NWS Excessive Rainfall Outlook
- NEXRAD Real-Time Weather Radar



FEMA

RAPT Analysis through Layer Combinations



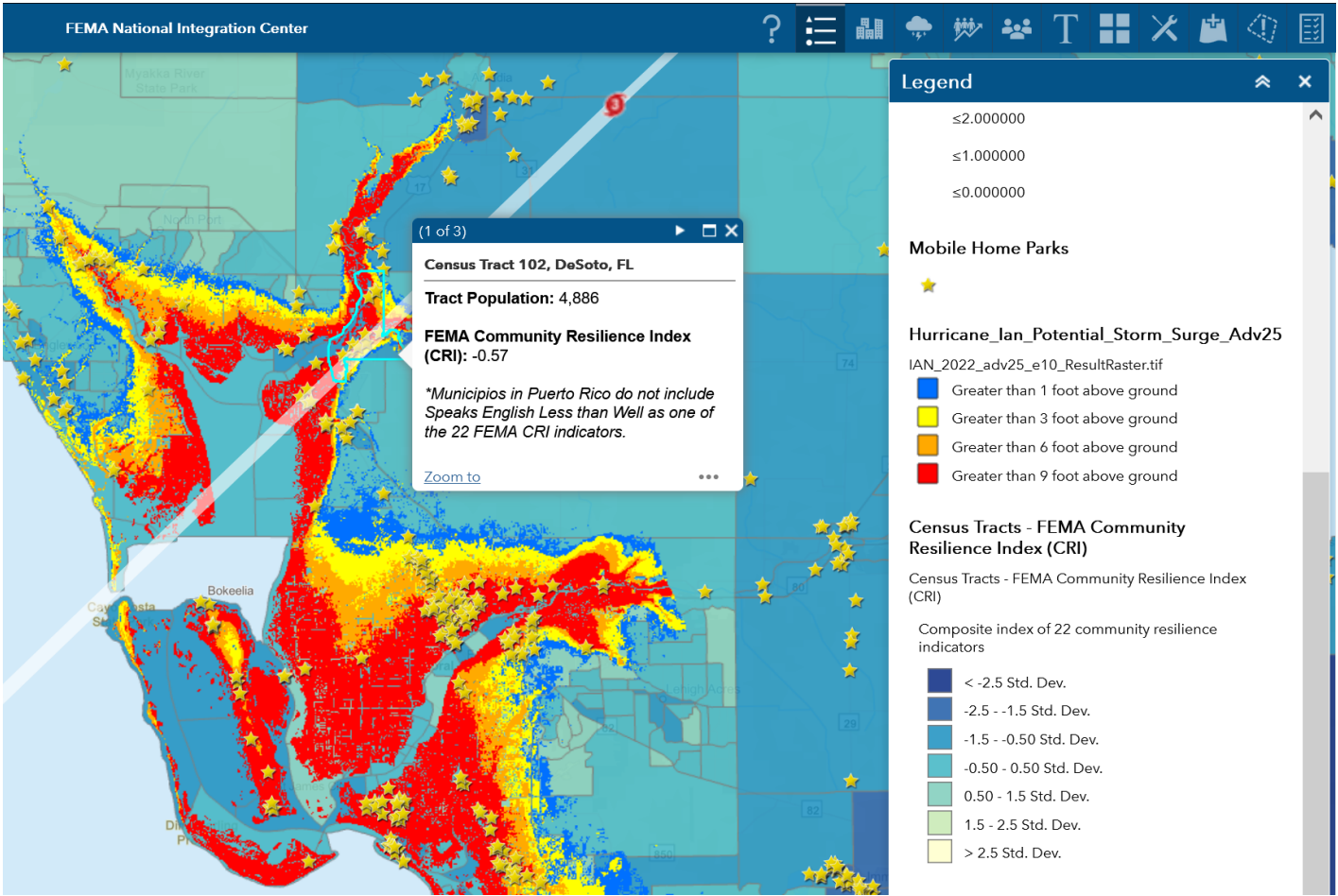
RAPT combines multiple data sets and analysis tools to support situational awareness for all phases of emergency management.



FEMA

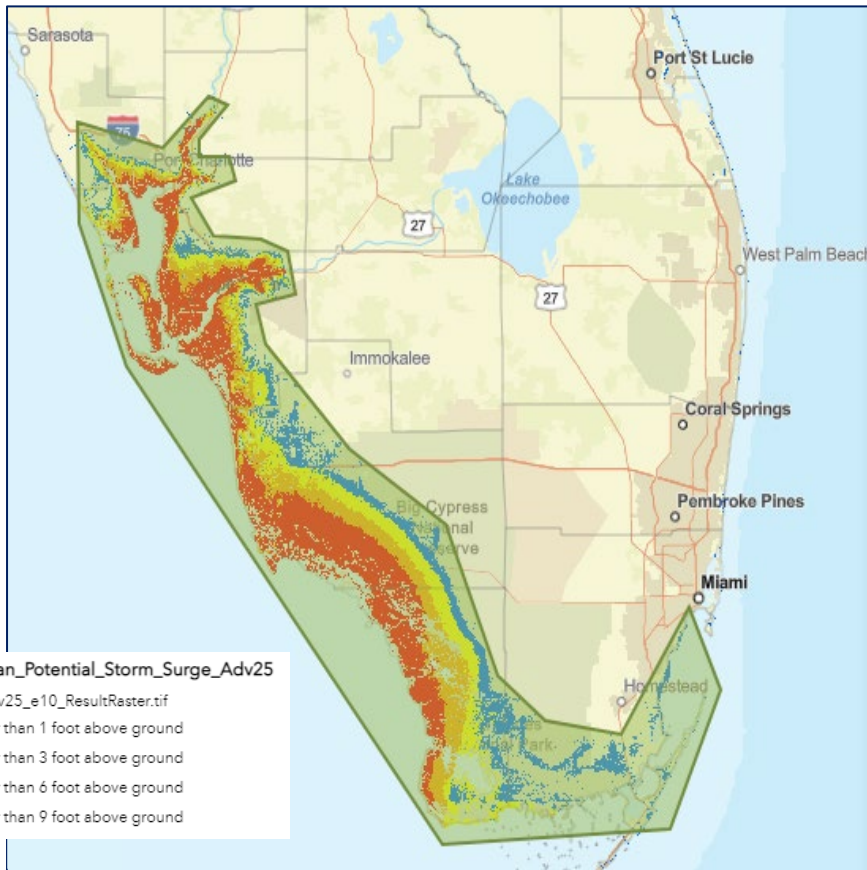


RAPT Support for Hurricane Response Operations



FEMA

RAPT Support for Hurricane Response Operations



Population Counter

Population Count

Choose an Indicator to Count*

Population Age 65 and Over

Run

Population Indicator Summary

Population Counter

435,894

(The above count is calculated based off the user's selected area on the Input tab of the population count)

Population Counter

Population Count

Choose an Indicator to Count*

Population with a Disability

Run

Population Indicator Summary

Population Counter

197,758

(The above count is calculated based off the user's selected area on the Input tab of the population count)

Population Counter

Population Count

Choose an Indicator to Count*

HH without a Vehicle

Run

Population Indicator Summary

Population Counter

65,946

(The above count is calculated based off the user's selected area on the Input tab of the population count)

- Population without HS Diploma
- Population Unemployed
- Population with a Disability
- HH with Limited English
- HH without a Vehicle
- Population Age 65 and Over
- Population without Health Insurance
- Single Parent HH
- HH without Smartphone
- Population Living Below Poverty Level
- Population Living in Mobile Homes
- Total Population**



An aerial photograph of a coastal town, likely in New England, featuring a large marina filled with numerous sailboats and yachts. The town is built on a hillside, with a prominent church steeple visible on the right. The background is a dense forest of green trees. The entire image is overlaid with a semi-transparent blue filter.

Questions and Demonstration

FEMA-TARequest@fema.dhs.gov