

# Trimble Sync Manager

Trimble® Sync Manager™ (TSM) provides a survey-focused interface for cloud-based data management between the office and the field. Part of the survey workflow, surveyors can immediately start working in Trimble Access™ by downloading fully configured jobs including linked files such as DXF maps and CSV. Trimble Sync Manager also integrates seamlessly with Trimble Business Center software and is compatible with other industry office software platforms.

## Trimble Sync Manager Overview



Select data using Trimble Business Center, or from your desktop



Create and send jobs to your team with Trimble Sync Manager



Connect, download and start work in Trimble Access. Sync back to the office



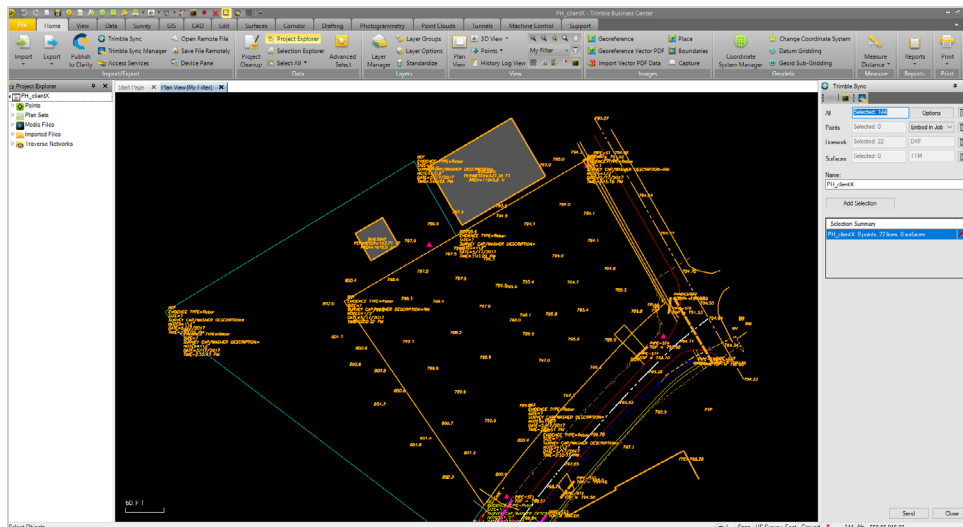
Track, review and report on the returned data with Trimble Sync Manager



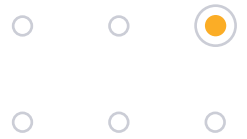
Export data to Trimble Business Center or your desktop for office processing and generation of deliverables

## Trimble Business Center

The latest version of Trimble Business Center installs Trimble Sync Manager and includes the Trimble Sync utility to aid the selection and sending of data to TSM.



Send a data selection using the Trimble Sync utility.

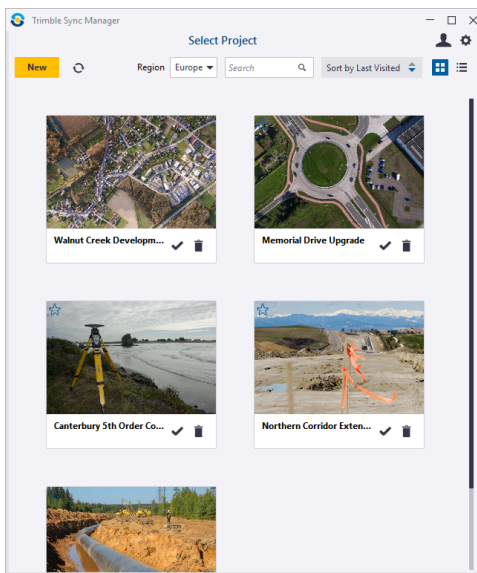


# Trimble Sync Manager

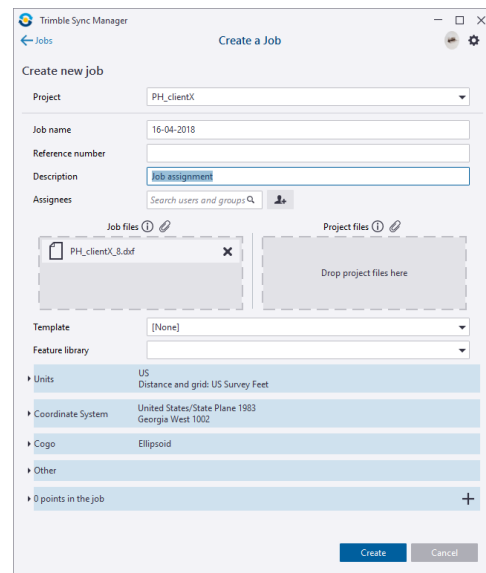
## Trimble Sync Manager

Trimble Sync Manager is a desktop application which sends and receives Trimble Access jobs through the Trimble Connect cloud. Data can be exchanged with Trimble Business Center and the PC file system.

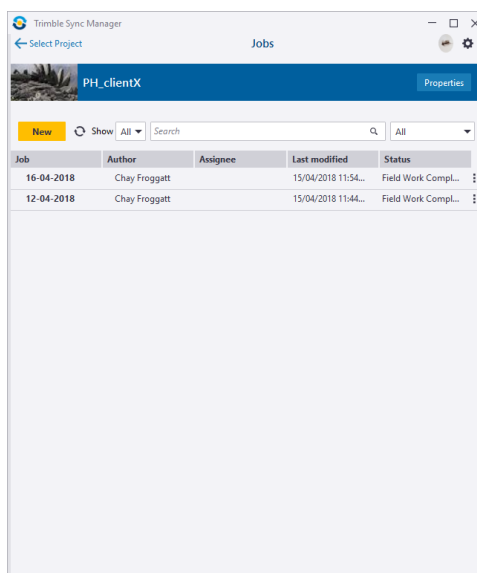
[Download Trimble Sync Manager now](#)



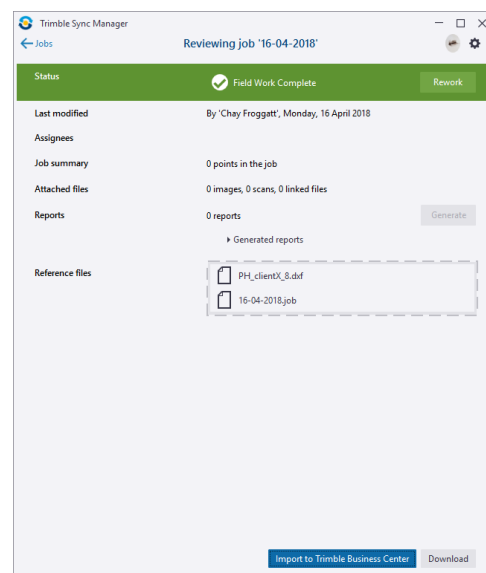
Group data and crew into project spaces



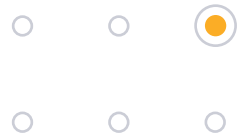
Create and send jobs for Trimble Access



Monitor job status



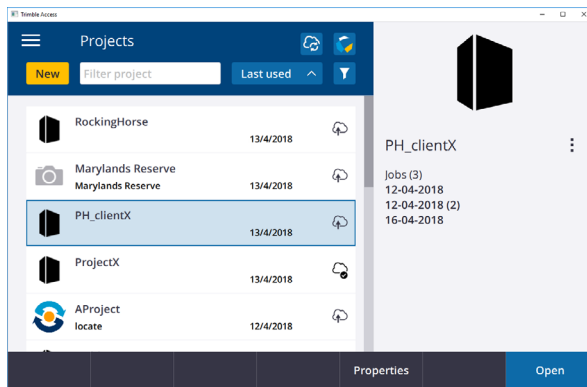
Review and export data to Trimble Business Center or your desktop



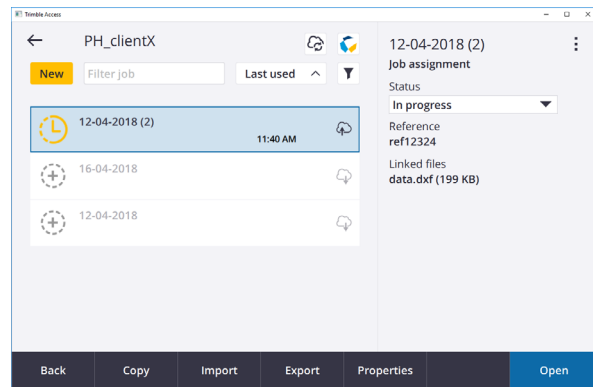
# Trimble Sync Manager

## Trimble Access

Trimble Access offers an efficient way of transferring job and linked files by syncing to the cloud. Jobs created in Trimble Sync Manager are ready to be used without having to key in additional settings or coordinate system parameters.



Select a project



Download a job



Start surveying

Syncing data back to the office allows processing to start quicker and provides a backup if anything should happen to the field device.

## Trimble Connect

The Trimble Sync Manager system utilizes the Trimble Connect™ cloud platform for improved communication and collaboration between your office and field. Trimble Sync Manager and Trimble Access should be used as the interfaces when using this system.