

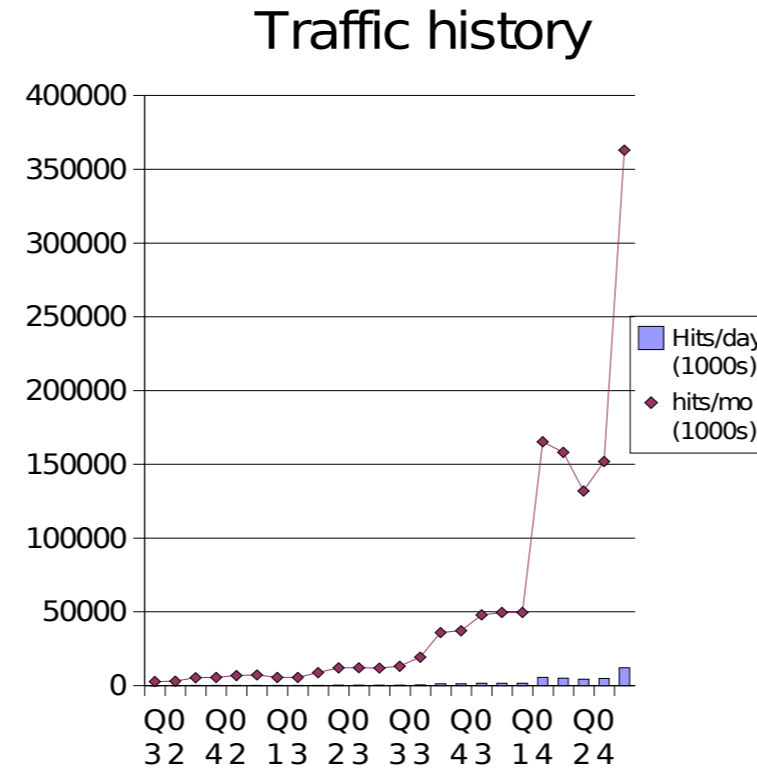
# Provisional Wikimedia hardware budget

Prepared by Daniel Mayer

## Traffic history (all Wikipedias)

Month	Quarter	Hits/day (1000s)	hits/mo (1000s)
Jul 2002	<b>Q3</b>	90	2790
Aug 2002	<b>Q2</b>	99	3069
Sep 2002		180	5400
Oct 2002	<b>Q4</b>	180	5580
Nov 2002	<b>Q2</b>	229	6870
Dec 2002		233	7223
Jan 2003	<b>Q1</b>	179	5549
Feb 2003	<b>Q3</b>	200	5600
Mar 2003		284	8804
Apr 2003	<b>Q2</b>	401	12030
May 2003	<b>Q3</b>	391	12121
Jun 2003		399	11970
Jul 2003	<b>Q3</b>	426	13206
Aug 2003	<b>Q3</b>	623	19313
Sep 2003		1200	36000
Oct 2003	<b>Q4</b>	1200	37200
Nov 2003	<b>Q3</b>	1600	48000
Dec 2003		1600	49600
Jan 2004	<b>Q1</b>	1600	49600
Feb 2004	<b>Q4</b>	5700	165300
Mar 2004		5100	158100
Apr 2004	<b>Q2</b>	4400	132000
May 2004	<b>Q4</b>	4900	151900
Jun 2004		12100	363000

Figures in gray are estimated

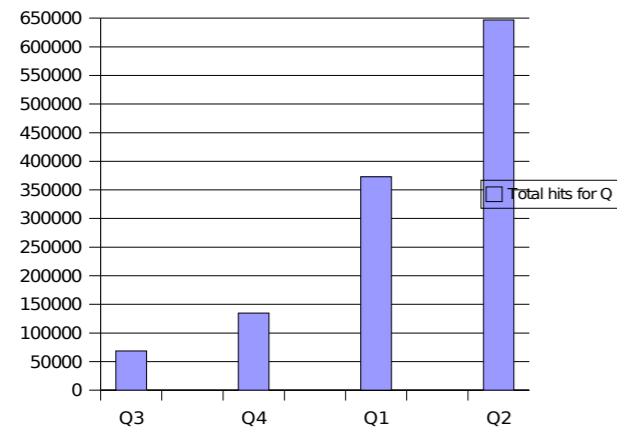


Traffic vs spending

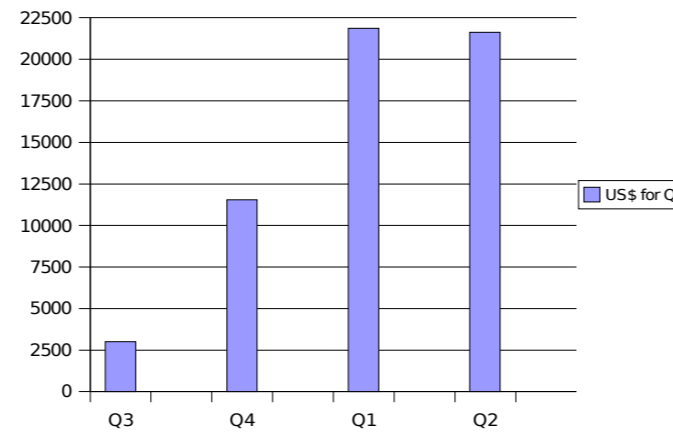
**Traffic vs spending**

	Hits/mo (1000s)	US\$/month	Quarter	Total hits for Q	Increase	US\$ for Q	US\$/1000 hits
Apr 2003	12030		<b>Q2</b>	36121			n/a
May 2003	12121		<b>03</b>				
Jun 2003	11970						
Jul 2003	13206	\$0.00	<b>Q3</b>	68519	32398	\$3,000.00	\$0.092598
Aug 2003	19313	\$3,000.00	<b>03</b>				
Sep 2003	36000	\$0.00					
Oct 2003	37200	\$7,492.79	<b>Q4</b>	134800	66281	\$11,544.30	\$0.174172
Nov 2003	48000	\$986.64	<b>03</b>				
Dec 2003	49600	\$3,064.87					
Jan 2004	49600	\$21,164.24	<b>Q1</b>	373000	238200	\$21,862.77	\$0.091783
Feb 2004	165300	\$682.33	<b>04</b>				
Mar 2004	158100	\$16.20					
Apr 2004	132000	\$1,522.40	<b>Q2</b>	646900	273900	\$21,622.40	\$0.078943
May 2004	151900	\$20,100.00	<b>04</b>				
Jun 2004	363000	\$0.00					
<b>TOTAL</b>	<b>1223219</b>	<b>\$58,029.47</b>			<b>610779</b>	<b>\$/1000 hits incre</b>	<b>\$0.095009</b>
						<b>Average</b>	<b>\$0.109374</b>

Traffic per quarter



Spending per quarter



Projected spending

**Rate of traffic growth and projected spending**

Month	hits (1000s)	% + over last Q	Actual spending	Modeled budget figures	Moore's Law adjustments
<b>2002</b>					
					\$/1000 hits Average
Jul 2002	90				
Aug 2002	99				
Sep 2002	180				
<b>Q3 2002</b>					
Oct 2002	180				
Nov 2002	229				
Dec 2002	233				
<b>Q4 2002</b>		<b>74.73%</b>	<b>\$0.00</b>	<b>\$799.41</b>	<b>\$920.27</b>
<b>2003</b>					
					\$/1000 hits Average
					\$0.095009 \$0.109374
Jan 2003	179				
Feb 2003	200				
Mar 2003	284				
<b>Q1 2003</b>		<b>1.42%</b>	<b>\$0.00</b>	<b>\$27</b>	<b>\$31</b>
Apr 2003	401				
May 2003	391				
Jun 2003	399				
<b>Q2 2003</b>		<b>81.03%</b>	<b>\$0.00</b>	<b>\$1,536</b>	<b>\$1,768</b>
Jul 2003	426				
Aug 2003	623				
Sep 2003	1200				
<b>Q3 2003</b>		<b>89.69%</b>	<b>\$3,000.00</b>	<b>\$3,078</b>	<b>\$3,544</b>
Oct 2003	1200				
Nov 2003	1600				
Dec 2003	1600				
<b>Q4 2003</b>		<b>96.73%</b>	<b>\$11,544.30</b>	<b>\$6,297</b>	<b>\$7,249</b>
<b>Year end</b>			<b>\$14,544.30</b>	<b>\$10,938</b>	<b>\$12,592</b>

Projected spending

Month	hits (x 1000)	% + over last Q	Actual spending	Modeled budget figures		Moore's Law adjustments	
				\$/1000 hits	Average	\$/1000 hits	Average
<b>2004</b>							
Jan 2004	1600	4.96E+04	\$21,164.24				
Feb 2004	5700	1.65E+05	\$682.33				
Mar 2004	5100	1.58E+05	\$16.20				
<b>Q1 2004</b>		<b>3.73E+05</b>	<b>176.71%</b>	<b>\$21,862.77</b>	<b>\$16,973</b>	<b>\$19,540</b>	\$0.071257 \$0.082031
Apr 2004	4400	1.32E+05	\$1,522.40				
May 2004	4900	1.52E+05	\$20,100.00				
Jun 2004	12100	3.63E+05	\$0.00				
<b>Q2 2004</b>		<b>6.47E+05</b>	<b>73.43%</b>	<b>\$21,622.40</b>	<b>\$16,264</b>	<b>\$18,723</b>	\$0.059381 \$0.068359
Jul 2004	12856	3.99E+05					
Aug 2004	12856	3.99E+05					
Sep 2004	13285	3.99E+05					
<b>Q3 2004</b>		<b>1.20E+06</b>	<b>84.82%</b>	<b>\$0.00</b>	<b>\$27,152</b>	<b>\$31,258</b>	\$0.049484 \$0.056966
Oct 2004	23761	7.37E+05					
Nov 2004	24553	7.37E+05					
Dec 2004	23761	7.37E+05					
<b>Q4 2004</b>		<b>2.21E+06</b>	<b>84.82%</b>	<b>\$0.00</b>	<b>\$41,819</b>	<b>\$48,142</b>	\$0.041237 \$0.047471
<b>Year end</b>		<b>4.43E+06</b>		<b>\$43,485.17</b>	<b>\$102,209</b>	<b>\$117,663</b>	

Month	hits (x 1000)	% + over last Q	Actual spending	Projected spending		Moore's Law adjustments	
				Modeled budget figures			
<b>2005</b>				\$/1000 hits	Average	\$/1000 hits	Average
Jan 2005	43915						
Feb 2005	48620						
Mar 2005	43915						
<b>Q1 2005</b>	<b>4.08E+06</b>	<b>84.82%</b>	<b>\$0.00</b>	<b>\$64,409</b>	<b>\$74,148</b>	\$0.034364	\$0.039559
Apr 2005	83869						
May 2005	81164						
Jun 2005	82577						
<b>Q2 2005</b>	<b>7.51E+06</b>	<b>83.87%</b>	<b>\$0.00</b>	<b>\$98,092</b>	<b>\$112,923</b>	\$0.028636	\$0.032966
Jul 2005	149168						
Aug 2005	149168						
Sep 2005	154140						
<b>Q3 2005</b>	<b>1.39E+07</b>	<b>84.74%</b>	<b>\$0.00</b>	<b>\$151,849</b>	<b>\$174,808</b>	\$0.023864	\$0.027472
Oct 2005	275566						
Nov 2005	284752						
Dec 2005	292732						
<b>Q4 2005</b>	<b>2.62E+07</b>	<b>88.57%</b>	<b>\$0.00</b>	<b>\$244,348</b>	<b>\$281,292</b>	\$0.019886	\$0.022893
<b>Year end</b>	<b>5.16E+07</b>		<b>\$0.00</b>	<b>\$558,697</b>	<b>\$643,171</b>		
<b>2006</b>				\$/1000 hits	Average		
Jan 2006	520468						
Feb 2006	576232						
Mar 2006	520468						
<b>Q1 2006</b>	<b>4.84E+07</b>	<b>85.03%</b>	<b>\$0.00</b>	<b>\$368,623</b>	<b>\$424,359</b>	\$0.016572	\$0.019078
Apr 2006	995123						
May 2006	963022						
Jun 2006	995123						
<b>Q2 2006</b>	<b>8.96E+07</b>	<b>85.03%</b>	<b>\$0.00</b>	<b>\$568,387</b>	<b>\$654,326</b>	\$0.013810	\$0.015898
Jul 2006	1781882						
Aug 2006	1781882						
Sep 2006	1841278						
<b>Q3 2006</b>	<b>1.66E+08</b>	<b>85.03%</b>	<b>\$0.00</b>	<b>\$876,406</b>	<b>\$1,008,917</b>	\$0.011508	\$0.013248
Oct 2006	3297018						
Nov 2006	3406919						
Dec 2006	3297018						
<b>Q4 2006</b>	<b>3.07E+08</b>	<b>85.03%</b>	<b>\$0.00</b>	<b>\$1,351,347</b>	<b>\$1,555,667</b>	\$0.009590	\$0.011040
<b>Year end</b>	<b>6.10E+08</b>		<b>\$0.00</b>	<b>\$3,164,764</b>	<b>\$3,643,269</b>		

Month	hits (x 1000)	% + over last Q	Actual spending	Projected spending		Moore's Law adjustments	
				Modeled budget figures			
<b>2007</b>				\$/1000 hits	Average	\$/1000 hits	Average
Jan 2006	6100478	1.89E+08					
Feb 2006	6754101	1.89E+08					
Mar 2006	6100478	1.89E+08					
<b>Q1 2006</b>		<b>5.67E+08</b>	<b>85.03%</b>	<b>\$0.00</b>	<b>\$2,083,666</b>	<b>\$2,398,712</b>	\$0.007992 \$0.009200
Apr 2006	11663982	3.50E+08					
May 2006	11287724	3.50E+08					
Jun 2006	11663982	3.50E+08					
<b>Q2 2006</b>		<b>1.05E+09</b>	<b>85.03%</b>	<b>\$0.00</b>	<b>\$3,212,842</b>	<b>\$3,698,616</b>	\$0.006660 \$0.007667
Jul 2006	20885694	6.47E+08					
Aug 2006	20885694	6.47E+08					
Sep 2006	21581884	6.47E+08					
<b>Q3 2006</b>		<b>1.94E+09</b>	<b>85.03%</b>	<b>\$0.00</b>	<b>\$4,953,939</b>	<b>\$5,702,963</b>	\$0.005550 \$0.006389
Oct 2006	38644833	1.20E+09					
Nov 2006	39932995	1.20E+09					
Dec 2006	38644833	1.20E+09					
<b>Q4 2006</b>		<b>3.59E+09</b>	<b>85.03%</b>	<b>\$0.00</b>	<b>\$7,638,568</b>	<b>\$8,793,502</b>	\$0.004625 \$0.005324
<b>Year end</b>		<b>7.15E+09</b>		<b>\$0.00</b>	<b>\$17,889,015</b>	<b>\$20,593,793</b>	

**Q3 2004 possibilities**

<b>Growth</b>	<b>84.82%</b>	<b>73.43%</b>	<b>176.71%</b>	<b>20.00%</b>	<b>50.00%</b>	<b>100.00%</b>	<b>0.00%</b>
\$/1000 hits	\$27,152.24	\$23,506.27	\$56,565.59	\$6,402.22	\$16,005.54	\$32,011.09	\$0.00
Average	\$31,257.60	\$27,060.36	\$65,118.17	\$7,370.22	\$18,425.55	\$36,851.09	\$0.00

NOTE: The 73.43% figure is the actual growth from Q1 to Q2 and the 176.71% figure is the actual growth from Q4 2003 to Q1 2004. The average quarter to quarter growth over the last couple years, however, is about 90%. But who knows if this quarter will follow that or do something unpredictable like the last two quarters.