

# Vermont Agency of Transportation

## Transportation Equity Framework

---

MICHELE BOOMHOWER,

JANUARY 6, 2022

DIRECTOR OF POLICY, PLANNING AND INTERMODAL DEVELOPMENT

PRESENTATION TO SENATE TRANSPORTATION



# Act No. 55 of 2021 Legislative Assembly

**An act relating to the Transportation Program and miscellaneous changes to laws related to transportation, Section 41. Transportation Equity Framework Report**

*The Agency of Transportation, in consultation with the State's 11 Regional Planning Commissions (RPCs), shall undertake a comprehensive analysis of the State's existing transportation programs and develop a recommendation on a transportation equity framework through which the annual Transportation Program (the Agency Capital Program), and the Agency's Annual Project Prioritization Process, can be evaluated so as to advance mobility equity, which is a transportation system that increases access to mobility options, reduces air pollution, and enhances economic opportunity for Vermonters in communities that have been underserved by the State's transportation system.....*

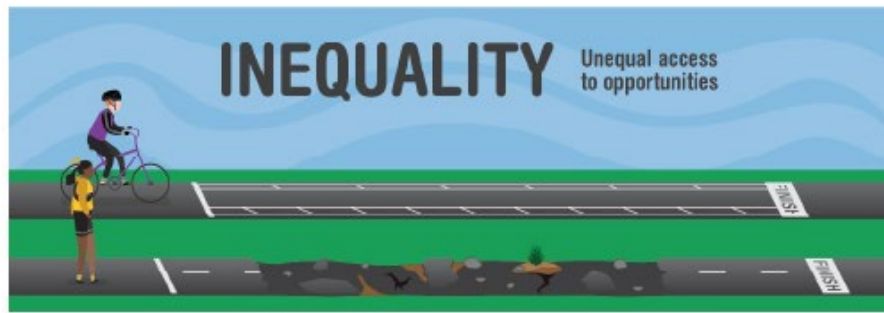
# Executive Order 14008 of the President (01/2021)



Federal investments will be made in a manner whereby 40 percent of the overall benefits of such investments flow to disadvantaged communities.

The Justice40 Initiative will impact the way the Vermont Agency of Transportation implements projects and programs.

Interim guidance - <https://www.whitehouse.gov/wp-content/uploads/2021/07/M-21-28.pdf>



source: Oregon DOT

## EQUITY VISUALIZED

The image illustrates different terms related to a Social Equity framework. In the first frame, “Inequality” shows that not everyone faces the same path ahead or has the same resources. “Equality” shows that even when given the same tools, in this case a bicycle, the obstacles each person faces are different. “Social Equity” recognizes inequalities, in this case a more obstructed path, and creates custom solutions—in this case, a bicycle with different tread designed to handle the terrain—but still the obstacles are present. “Social Equity” is on the path to “Justice”, which is the final goal of Social Equity, taking away the inequalities and creating the same opportunities for all.

# Project Team

## AOT and Regional Planning Commissions

- Dave Pelletier - Project Manager
- Michele Boomhower
- Charlie Baker (CCRPC)

## Consultants – RSG lead

- Jonathan Slason (RSG) - Project Manager
- Lydia Hausle (Toole Design) - Project Planner and Deputy Project Manager
- Kiah Morris and Dan Fingas (Rights and Democracy Institute)
- Chris Cole Consulting
- Several others

TECHNICAL PROPOSAL | 11.24.2021

## UPDATE: Transportation Equity Framework



PREPARED FOR  
VERMONT AGENCY OF TRANSPORTATION -  
POLICY, PLANNING AND  
INTERMODAL DEVELOPMENT DIVISION (PPAID)



55 RAILROAD ROW  
WHITE RIVER JUNCTION, VT 05001  
802.295.4999  
rsginc.com

IN COOPERATION WITH:  
EBP | TOOLE DESIGN GROUP, LLC |  
CHRIS COLE CONSULTING, LLC |  
RIGHTS AND DEMOCRACY  
INSTITUTE



**TASK 1: Project Initiation and Research**

**TASK 2: Existing Policies, Programming, and Assessment**

**TABLE 2: EQUITY FRAMEWORK WIREFRAME**

Distributive	Procedural	Contextual		Corrective Equity	
Accurate population representation	Equitable access to decision-making	Needs analysis	Service Provision	Prioritization process	Ongoing performance Management

## TASK 3: Stakeholder and Public Involvement

Led by Rights and Democracy Institute (Rights and Democracy Institute)

Intentional outreach to marginalized communities

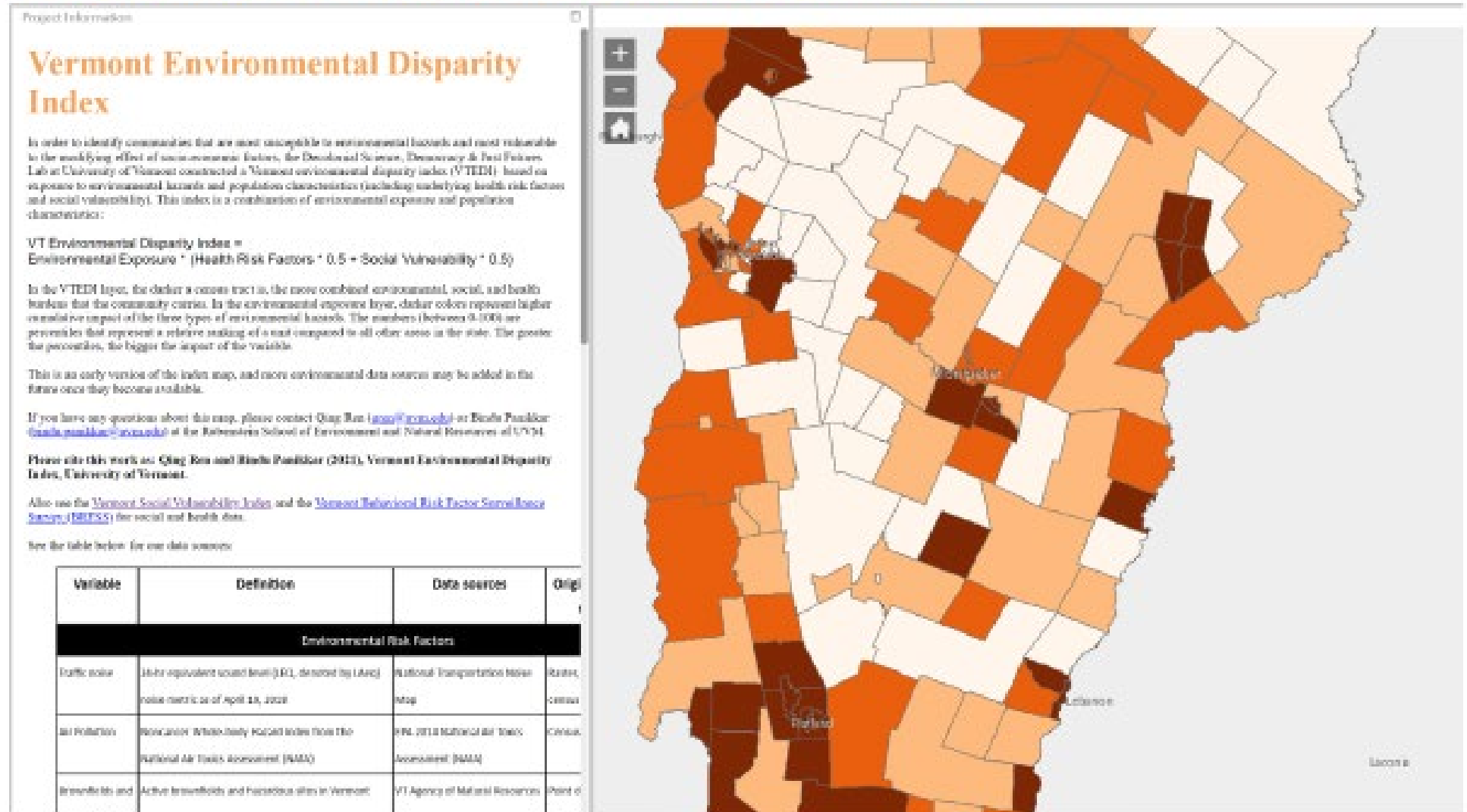
- Bennington BIPOC community
- Winooski/Burlington New American 2<sup>nd</sup> Generation community
- Barre & Newport Urbanized community
- Rutland area persons experiencing low income

Range of engagement tools being considered:

- Social media
- Text banking
- Phone banking
- Print mail
- Online and email systems
- Events, meetings, interviews and focus groups
- Survey tools

## FIGURE 2: VERMONT ENVIRONMENTAL DISPARITY INDEX

### TASK 4: Gap Analysis & Needs Assessment

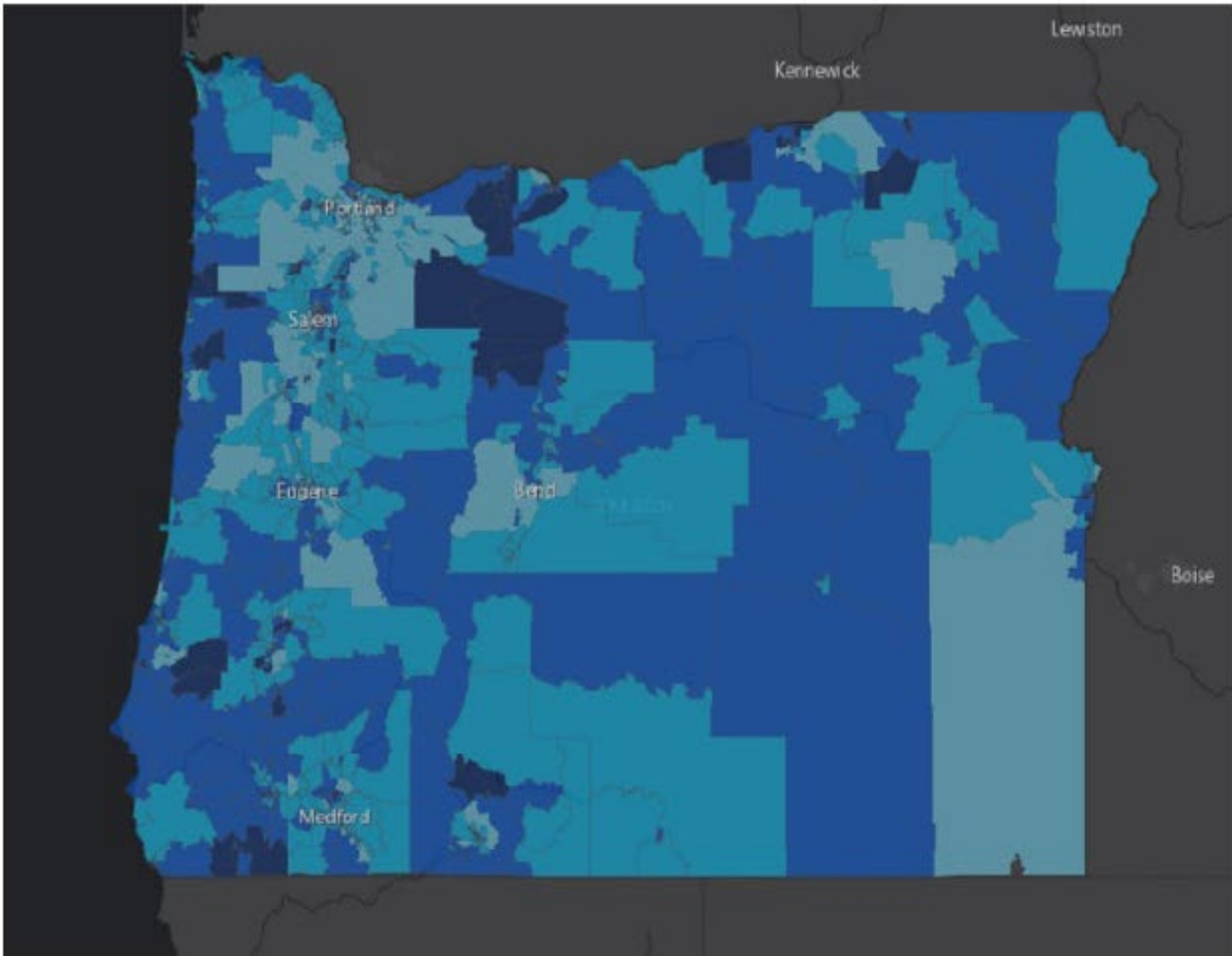


Source: <https://www.arcgis.com/apps/webappviewer/index.html?id=68a9290bde0c42529460e1b8deee8368>

Rubenstein School of Environment and Natural Resources of UVM



## TASK 5: Data and Tools



The map to the left is a snapshot of **Oregon's Equity Index**, created by ODOT's Office of Social Equity.

Areas with darker colors ODOT has identified as having higher likelihoods of experiencing disparities.

The lighter the color, the lower the likelihood the area is experiencing disparities.

**Explore the map in detail at**

**<https://arcg.is/0XjnC50>**

- Updated data files to reflect latest census findings
- Prototype equity index data set

## TASK 6: Recommendations and Implementation Plan

VISION	VISION STATEMENT (TO BE DEVELOPED)					
Goals	Inclusive Engagement		Equitable Investment and Action		Equitable Outcomes	
Objectives	Accurate Population Representation	Equitable Access to Decision-Making	Needs Fulfillment	Service Provision	Prioritization Process	Ongoing Performance Management
Actions	Recommend census or public datasets or develop custom dashboards	Develop robust and representative approaches to public engagement	Clarify set of performance standards to develop existing and historical gaps	Accessibility and equity audits	Develop scoring and weighting	Annual reporting on where and how much investment occurs to what population of concern
	Periodically validate accuracy of publicly available datasets	Maintain records and compare voices heard to those not explicitly heard	Create a transparent mapping or list of inequities and needs (historical, current, and forecast)	Funding resiliency and stability	Transparency in scoring and participation	Long-range planning informed from audits of past investment strategies
		Accessibility and equity audits				Develop long-range tracking of success

**TASK 7: Draft and Final Transportation  
Equity Framework Report**

**VT Agency of Transportation  
Equity Framework Report**

- Background and Context Setting: What does transportation equity look like? What is the state of transportation equity in Vermont?
- Task 2: Current Policies, Guidance, and Best Practices
- Task 3: Input from Vermonters
- Task 4: Equity Framework Structure – Gap and Needs Analysis
- Task 5: Data and Tools
- Task 6: Recommendations and Implementation Plan

# Timeline

Fall 2021 – RFP and consultant selection

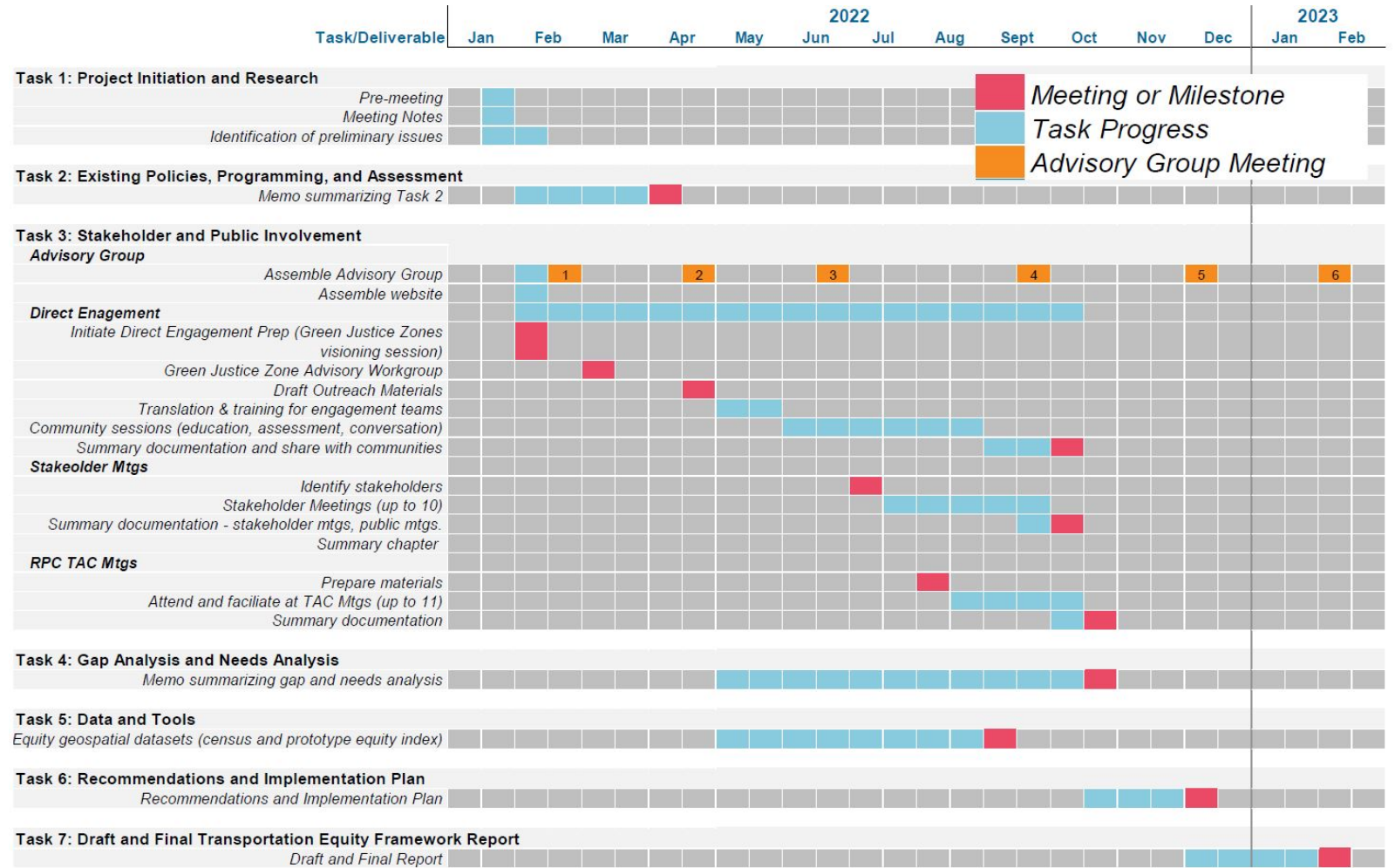
January 2022 - Kickoff

February - First Advisory Group Meeting

May thru September – Community outreach, Stakeholder engagement and RPC TAC Meetings

October thru December – Recommendations and Implementation Plan

February 2023 – Delivery of Final Transportation Equity Framework Report



# Questions/ Comments?

## **Contact**

Michele Boomhower, AOT Division Director Policy, Planning & Intermodal Development

[Michele.Boomhower@vermont.gov](mailto:Michele.Boomhower@vermont.gov)

(802) 505-3480