


WILD EXPEDITIONS AFRICA - RECOMMENDED SELLING PRICES 2024



WILD EXPEDITIONS AFRICA - RECOMMENDED SELLING PRICES 2024

Camps


CAMP HWANGE – Hwange National Park, Zimbabwe

 CAMP HWANGE	1 January to 31 March 2024	1 April to 30 June 2024	1 July to 31 October 2024	1 November to 31 December 2024	Notes
Accommodation & activities	USD 480.00	USD 580.00	USD 870.00	USD 480.00	Per person per night sharing (pppns)
Conservation & park fees	USD 20.00	USD 20.00	USD 20.00	USD 20.00	Per person per night (pppn)
Single room supplement	USD 0.00	USD 210.00	USD 210.00	USD 0.00	Surcharge in addition to pppns
Private 4x4 vehicle	USD 550.00	USD 550.00	USD 550.00	USD 550.00	Per vehicle per night, including guide & must be prebooked. Subject to availability.
	<p>Minimum age requirement is 8 years. Accommodation rates for children under 16 years are 50% of adult sharing rate. The minimum age for walking activities is 12 years and is at the discretion of the guide. Families with children under 12 years are required to take a private vehicle at the above rate. Children under the age of 14 years must be sharing a room with an adult.</p> <p>National Parks conservation and park fees are subject to change without notice.</p> <p>Camp Hwange operates year-round.</p> <p>Click here for Terms and Conditions</p>				
Included in accommodation & activity rate	VAT, all activities, all beverages, all meals, laundry & emergency medical evacuation to Victoria Falls.				
Excluded from accommodation & activity rate	<p>Air and/or road transfers to and from camp, conservation and daily park fees, gratuities, privately guided activities, personal medical insurance & any additional purchases.</p> <p>A condition of travel is that guests must take out travel and evacuation insurance.</p>				



WILD EXPEDITIONS AFRICA - RECOMMENDED SELLING PRICES 2024


KARANGOMA – Northern Okavango Delta, Botswana

 WildExpeditions	1 May to 30 June 2024	1 July to 30 September 2024	1 October to 30 November 2024	1 December 2024 to 31 March 2025	Notes
Accommodation & activities	USD 800.00	USD 1000.00	USD 800.00	USD 600.00	Per person per night sharing (pppns)
Community Conservation levy	USD 50.00	USD 50.00	USD 50.00	USD 50.00	Per person per night (pppn)
Single room supplement	USD 0.00	USD 300.00	USD 240.00	USD 0.00	Surcharge in addition to pppn rate
Private 4x4 vehicle	USD 600.00	USD 600.00	USD 600.00	USD 600.00	Per vehicle per night, including guide & must be prebooked. Subject to availability.
	<p>Minimum age requirement is 8 years. Accommodation rates for children under 16 years are 50% of adult sharing rate. Children under the age of 14 years must share a room with an adult. The minimum age for walking & mokoro activities is 12 years and is at the discretion of the camp guide. Families with children under 12 years are required to take a private vehicle at the above rate for the duration of their stay. Karangoma operates year-round. Minimum 2-night stay applies. Click here for Terms and Conditions</p>				
Included in accommodation & activity rate	<p>VAT, twice daily camp activities on a shared scheduled basis, all local beverages, all meals, limited WiFi, laundry & emergency medical evacuation to Maun. Included activities: Day & night game drives, mokoro (seasonal), boating (seasonal), guided walking and stargazing.</p>				
Excluded from accommodation & activity rate	<p>Access to and from camp, community conservation levy (shown above), gratuities, privately guided activities, imported drinks, personal medical insurance & any additional purchases or expenses. A condition of travel is that guests must take out travel and evacuation insurance.</p>				



WILD EXPEDITIONS AFRICA - RECOMMENDED SELLING PRICES 2024


LALE'S CAMP – Lower Omo Valley, Ethiopia

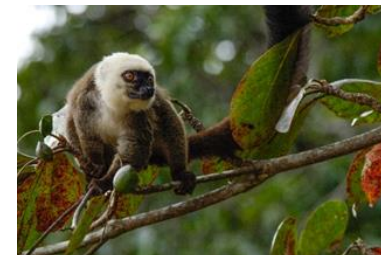
 WildExpeditions	2 pax 2024	3 pax 2024	4 pax 2024	5 pax 2024	6 pax 2024	7-12 pax 2024	Notes
Accommodation & activities	USD 1290.00	USD 1140.00	USD 950.00	USD 890.00	USD 820.00	USD 760.00	Per person per night sharing (pppns)
Community & park fees	included	Included	included	included	included	included	Included
Single room supplement	n/a	n/a	n/a	n/a	n/a	n/a	n/a
Private 4x4 vehicle, including guide	included	Included	included	included	included	included	Included
	<p>In order to limit the unnecessary impact on local cultures we offer Lale's Camp for exclusive use bookings of a minimum of 2 pax for a minimum of 3-nights only.</p> <p>Accommodation rates for children under 12 years are 50% of adult sharing rate.</p> <p>Lale's Camp is closed for the month of April.</p> <p>Click here for Terms and Conditions</p>						
Included in accommodation & activity rate	VAT, road transfers between camp and Jinka or Murulle airstrips, community & park fees, all activities, all beverages, and all meals.						
Excluded from accommodation & activity rate	Gratuities, laundry, personal medical insurance, emergency medical (or other) evacuation to Addis Ababa & any additional purchases. A condition of travel is that guests must take out travel and evacuation insurance.						



WILD EXPEDITIONS AFRICA - RECOMMENDED SELLING PRICES 2024

MASOALA FOREST LODGE – Masoala National Park, Madagascar

	3-night Adventure 2024	4-night Adventure 2024	7-night Adventure 2024	7-night Honeymoon Adventure 2024	10-night Adventure 2024	11-night Adventure 2024	Notes
Accommodation & activities	EUR 1870.00	EUR 2290.00	EUR 3140.00	EUR 2680.00	EUR 4110.00	EUR 4520.00	Per person per package sharing (pppps)
Community & park fees	included	included	included	included	included	included	Included
Single room rate	EUR 2435.00	EUR 2980.00	EUR 4085.00	n/a	EUR 5343.00	EUR 5876.00	Per single room package rate
*Scheduled flight per way	EUR 650.00	EUR 650.00	EUR 650.00	EUR 650.00	EUR 650.00	EUR 650.00	Per person per way, min 2 pax
	<p>Accommodation rates for children under 18 years are 50% of adult sharing rate. Children aged 2 or under are free of charge. Departures are on Sundays (3-, 7- and 10-night adventures) and Wednesdays (4-, 7- and 11-night adventures) only. Masoala Forest Lodge operates from mid-April through to the first week of January. *Flying is operated by an independent 3rd party operator and remains subject to change without prior notice. 'Per way' means: Antananarivo to Maroantsetra OR Maroantsetra to Antananarivo Click here for Terms and Conditions</p>						
Included in accommodation & activity rate	VAT, transfers between Maroantsetra and Masoala Forest Lodge, all activities per suggested itinerary, all non-alcoholic beverages & MFL flavored rums, all meals, laundry & emergency medical evacuation to Maroantsetra.						
Excluded from accommodation & activity rate	Air transfers between Antananarivo and Maroantsetra, gratuities, personal medical insurance, emergency medical (or other) evacuation to Antananarivo & any additional purchases. A condition of travel is that guests must take out travel and evacuation insurance.						




WILD EXPEDITIONS AFRICA - RECOMMENDED SELLING PRICES 2024



WILD EXPEDITIONS AFRICA - RECOMMENDED SELLING PRICES 2024

Expeditions


EXPEDITION BLUE LAGOON – Masoala National Park, Madagascar

	10-night Expedition 2024	11-night Expedition 2024	Notes
Accommodation & activities	EUR 4560.00	EUR 4960.00	Per person per package sharing (pppps)
Community & park fees	included	Included	Included
Single room rate	EUR 5928.00	EUR 6448.00	Per single room per package. Min 2 pax to run expedition.
*Scheduled flight per way	EUR 650.00	EUR 650.00	Per person per way, min 2 pax 'Per way' means: Antananarivo to Maroantsetra OR Maroantsetra to Antananarivo
	<p>Expedition Blue Lagoon can be operated on an exclusive basis for a minimum of 2 pax and a maximum of 4 pax. Accommodation rates for children under 18 years are 50% of adult sharing rate. Children aged 2 or under are free of charge. *Flying is operated by an independent 3rd party operator and remains subject to change without prior notice. Departures are on Sundays (10-night adventure) and Wednesdays (11-night adventure) only. Click here for Terms and Conditions</p>		
Included in accommodation & activity rate	VAT, transfers between Maroantsetra and Masoala Forest Lodge, all activities per suggested itinerary, all non-alcoholic beverages and MFL flavored rums, all meals, laundry & emergency medical evacuation to Maroantsetra.		
Excluded from accommodation & activity rate	Air transfers between Antananarivo and Maroantsetra, gratuities, personal medical insurance, emergency medical (or other) evacuation to Antananarivo & any additional purchases. A condition of travel is that guests must take out travel and evacuation insurance.		



WILD EXPEDITIONS AFRICA - RECOMMENDED SELLING PRICES 2024


EXPEDITION DANAKIL – Danakil Depression, Ethiopia

 WildExpeditions	4 pax 2024	Notes
Accommodation & activities	USD 1018.00	Per person per night (pppn) This is an indicative per person per night price for a party of 4 . Pricing per person is dependent on the size of the party.
Community & park fees	Included	Included
Single room supplement	n/a	n/a
Private 4x4 vehicle, including guide	Included	Included
	In order to make the Danakil Expedition a worthwhile experience we do not operate this trip for fewer than 3 nights. We operate this expedition on an exclusive use basis for a minimum of 2 pax. Accommodation rates for children under 12 years are 50% of adult sharing rate. Due to high ambient temperatures, we do not operate this expedition over the months of May, June, July and August. Click here for Terms and Conditions	
Included in accommodation & activity rate	VAT, road transfers from and to either/both Semera and Mekele airports, all activities, all beverages, all meals, and emergency road evacuation to either Semera or Mekele airport.	
Excluded from accommodation & activity rate	Air transfers to either/both Semera/Mekele airports, gratuities, laundry, personal medical insurance, emergency medical (or other) evacuation to Addis Ababa & any additional purchases. A condition of travel is that guests must take out travel and evacuation insurance.	



WILD EXPEDITIONS AFRICA - RECOMMENDED SELLING PRICES 2024

EXPEDITION ETHIOPIAN WOLF – Bale Mountains National Park, Ethiopia

 WildExpeditions	4 pax 2024	Notes
Accommodation & activities	USD 875.00	Per person per night (pppn) This is an indicative per person per night price for a party of 4 . Pricing per person is dependent on the size of the party.
Community & park fees	Included	Included
Single room supplement	n/a	n/a
Private 4x4 vehicle, including guide	Included	Included
	In order to make the Ethiopian Wolf expedition a worthwhile experience we do not operate this trip for fewer than 3 nights. We operate this expedition on an exclusive use basis for a minimum of 2 pax. Accommodation rates for children under 12 years are 50% of adult sharing rate. Due to higher rainfall we do not operate this expedition over the months of May, June, July and August. Click here for Terms and Conditions	
Included in accommodation & activity rate	VAT, road transfers from and to either from Bale Goba or Bale Robe airports, all activities, all beverages, all meals, and emergency road evacuation to either Robe or Goba airport.	
Excluded from accommodation & activity rate	Air transfers to either Robe & Goba airports, gratuities, laundry, personal medical insurance, emergency medical (or other) evacuation to Addis Ababa & any additional purchases. A condition of travel is that guests must take out travel and evacuation insurance.	



WILD EXPEDITIONS AFRICA - RECOMMENDED SELLING PRICES 2024

