

DEPARTMENT OF COMMUNITY AND HUMAN SERVICES

The vision of the Department of Community and Human Services is that Alexandria **residents enjoy a sense of well-being, safety and self-sufficiency.**

The close to **700 employees** provide effective and essential safety net services that measurably improve or maintain the quality of life for more than **27,000** Alexandrians annually.

KATE GARVEY, DEPARTMENT DIRECTOR



- Alexandria Council of Human Services Organizations
- Alexandria Fund for Human Services
- Communications
- Community Partnerships
- Data Management & Analysis
- Emergency Operations
- Organizational Development & Equity
- Quality Assurance
- Service Integration
- Support for Friends of the Alexandria Mental Health Center
- Support for Local Human Rights Committee

CENTER FOR ADULT SERVICES

Phil Caldwell, Director and Community Services Board Executive Director

- Adult Protective Services
- Aging & Adult Services
- Case Management & Discharge Planning
- Day Support & Vocational Services
- Jail Services
- Medication Services
- Opioid Treatment Program
- Outpatient Mental Health & Substance Use Treatment Services
- Residential Treatment & Services
- Transitioning Adults Into Living Successfully (TRAILS)
- TRAILS Early Psychosis Treatment
- Support for Community Services Board
- Support for Commission on Aging



Center for Economic Support

Lesla Gilbert, Director & Social Services Director

- Benefits Programs (SNAP, TANF, Medicaid)
- Community Action Agency
- Customer Relations
- Homeless Continuum of Care
- Workforce Development Center
- Support for Commission on Employment and Alexandria/Arlington Regional Workforce Council
- Support for Economic Opportunities Commission
- Support for Social Services Advisory Board



Center for Children & Families

Stacey D. Hardy-Chandler, Director

- Child Behavioral Health
- Child Welfare Services
- Children's Services Act (CSA)
- Domestic Violence/Sexual Assault
- Early Childhood Development
- Youth Development & Services
- Support for Alexandria Community Policy Team
- Support for Children, Youth and Family Collaborative Commission
- Support for Commission for Women



Center for Operations

Sharon Vaughan-Roach, Director

- Contracts/Agreements
- Facilities
- Finance
- Human Resources
- Technology Services
- Support for Sheltered Homes of Alexandria



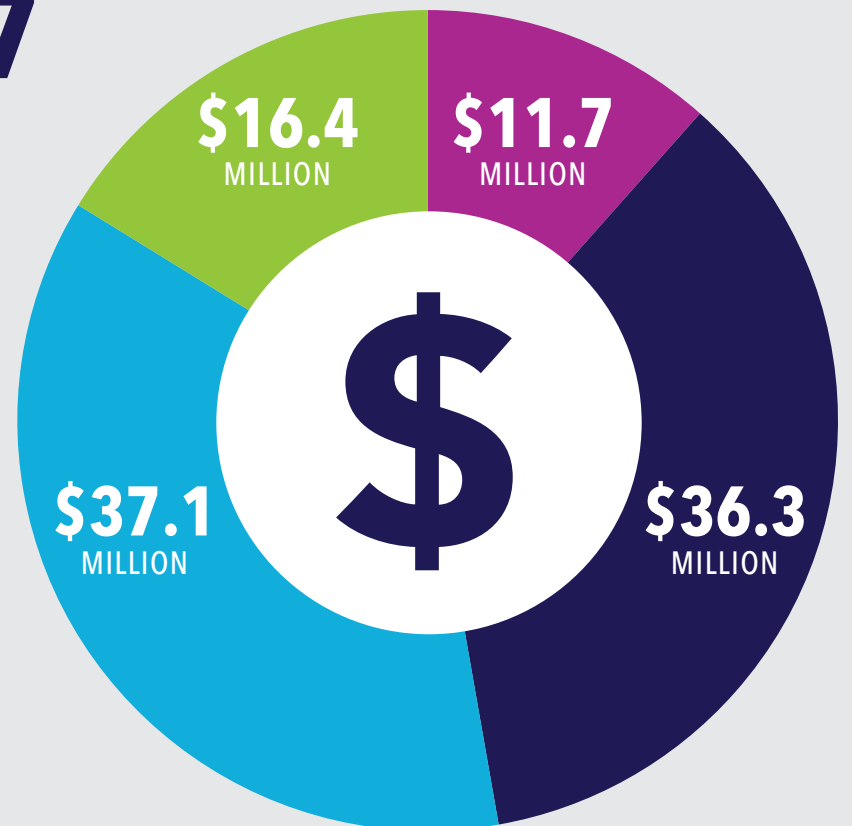

FY 2022 BUDGET } \$101,753,267

Leadership and General Management } \$11,754,145

Center for Adult Services
This Center provides behavioral health, developmental disability and substance use programs, and oversees service delivery in the divisions of Aging and Adult Services, Clinical and Emergency Services, and Community and Residential Support Services. } \$36,304,922

Center for Children & Families
This Center provides service delivery in the divisions of Early Childhood, Child Behavioral Health, Youth Development, Domestic Violence and Sexual Assault, Child Welfare, and the Children's Services Act. } \$37,197,600

Center for Economic Support
This Center provides social service programs and coordinates public benefits, community services and employment services. } \$16,496,600



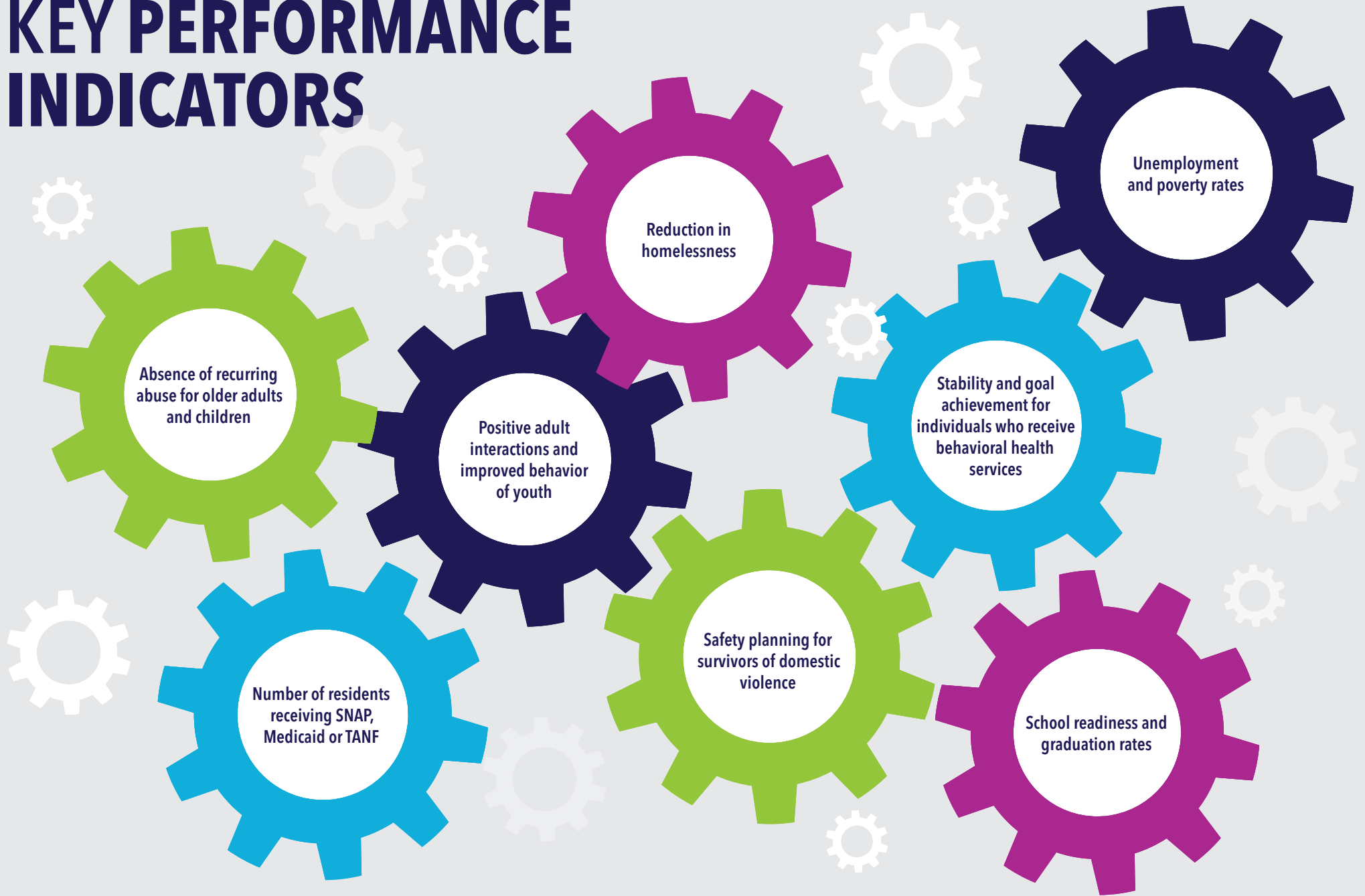
COMMUNITY STAKEHOLDERS & PARTNERS

- Coalitions and Collaborations
- Non-Profit Organizations
- Alexandria City Public Schools
- Alexandria Community Policy and Management Team
- Alexandria Community Services Board
- Children, Youth and Families Collaborative Commission



- Commission for Women
- Commission on Aging
- Commission on Employment
- Economic Opportunities Commission
- Social Services Advisory Board

KEY PERFORMANCE INDICATORS



LIVES POSITIVELY AFFECTED BY DCHS IN FY 2021

17,249
Youth engaged by counselors and youth development

4,046
Participants in mental health, substance use treatment and developmental disability services

27,061
Assisted in accessing health care through Medicaid

416
Families supported by Child Protective Services family assessments

356
Older adults served by Adult Protective Services

213
Sheltered in the winter shelter

151
Sheltered in the Alexandria Community Shelter

75
Sheltered by the Domestic Violence Safehouse

