

DEL RAY GATEWAY PROJECT: COLASANTO INTERACTIVE FOUNTAIN/SPRAY PARK and PUBLIC ART

Community Meeting
April 28, 2022



1 Project History and Milestones

2 Design Process and Revisions

3 Project Funding and Phasing

4 Public Art

5 Next Steps





JAMES M. DUNCAN LIBRARY

MT VERNON RECREATION CENTER

UHLER AVENUE

COMMONWEALTH AVENUE

MT VERNON AVENUE

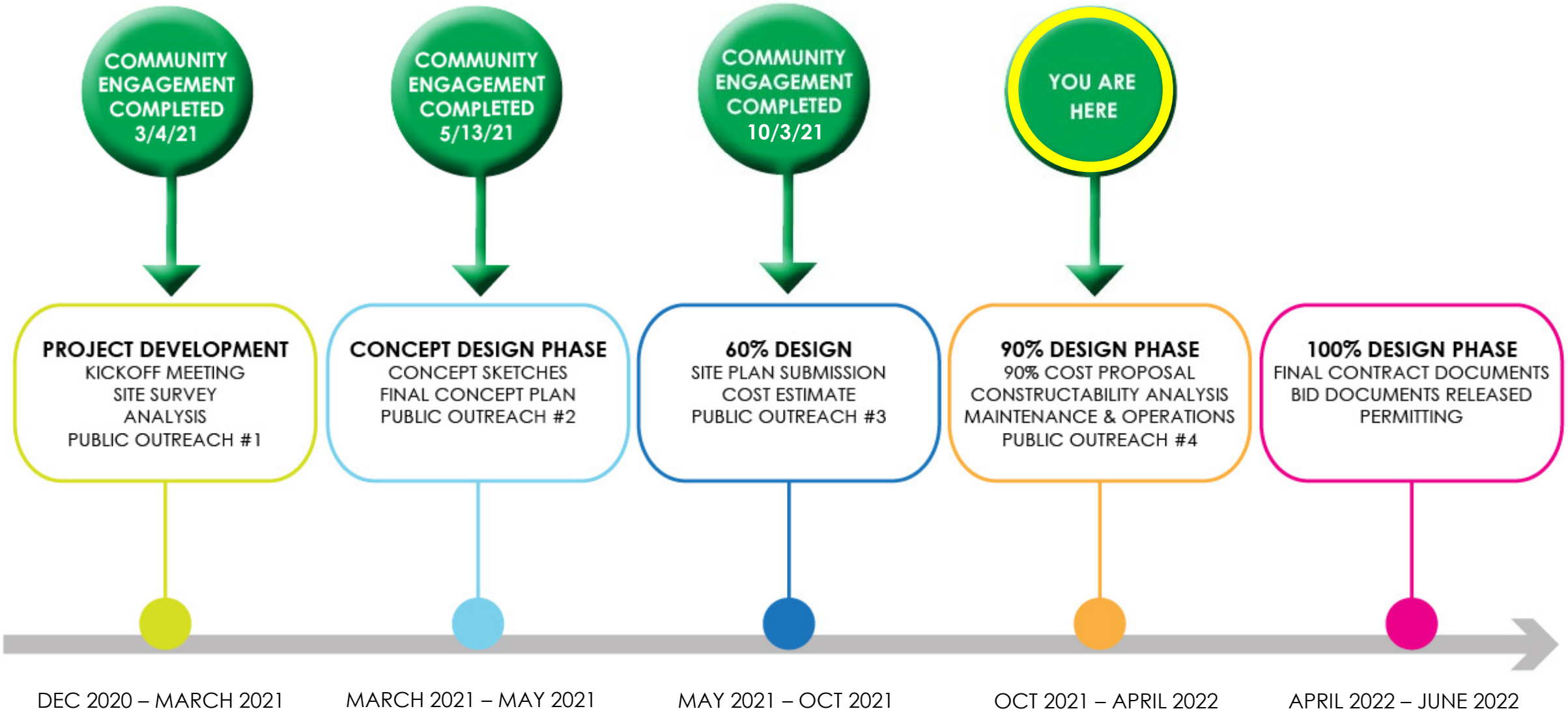
MT VERNON COMMUNITY SCHOOL

COLASANTO CENTER

NANCY DUNNING GARDEN

PROJECT AREA

PARKING LOT



1 Project History and Milestones

2 Design Process and Revisions

3 Project Funding and Phasing

4 Public Art

5 Next Steps



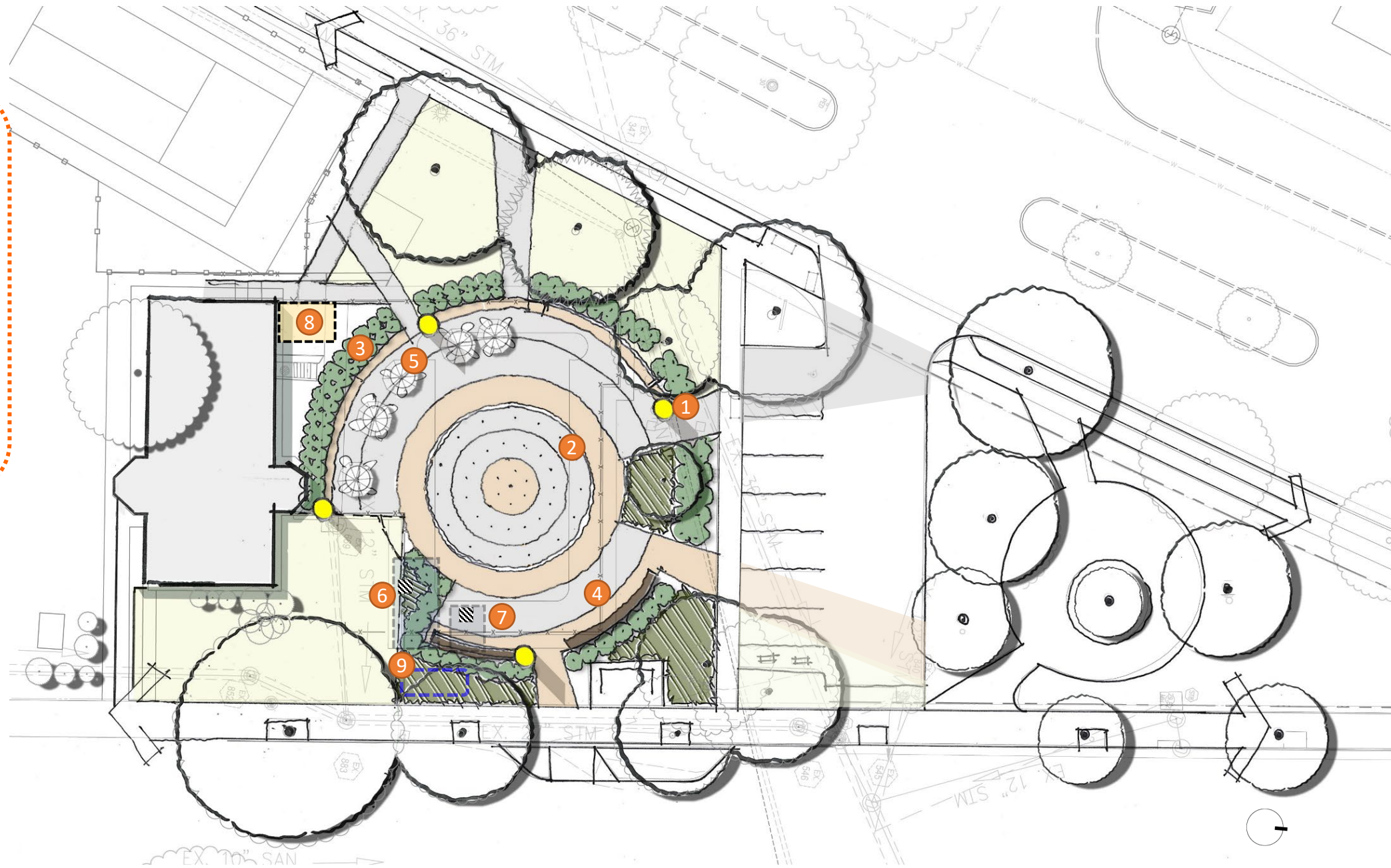
Guidelines from Needs Assessment, Community Meeting and Community Survey

- At grade aquatic facility
- Does not impact Colasanto Center building
- Multi-generational, inclusive
- Incorporates an art component
- Functions as a plaza and more
- Functions as a Del Ray gateway

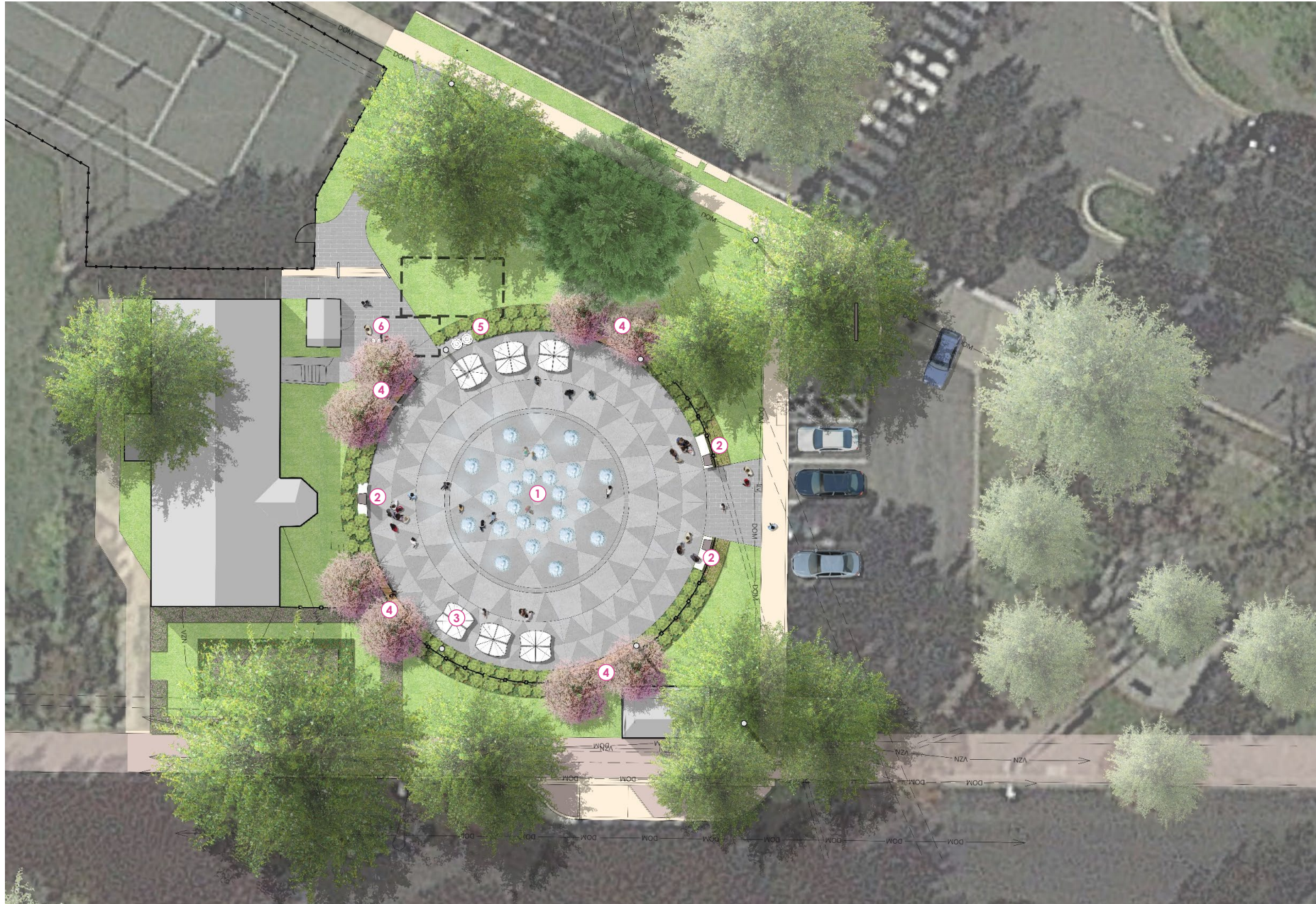


LEGEND

- 1. Custom Columns/Piers
- 2. Splash Fountains
- 3. Planting Buffer
- 4. Radial Benches
- 5. Tables & Chairs
- 6. Mechanical Room
- 7. Balance Tank
- 8. Potential Restroom
- 9. Potential Stormwater Management Facility



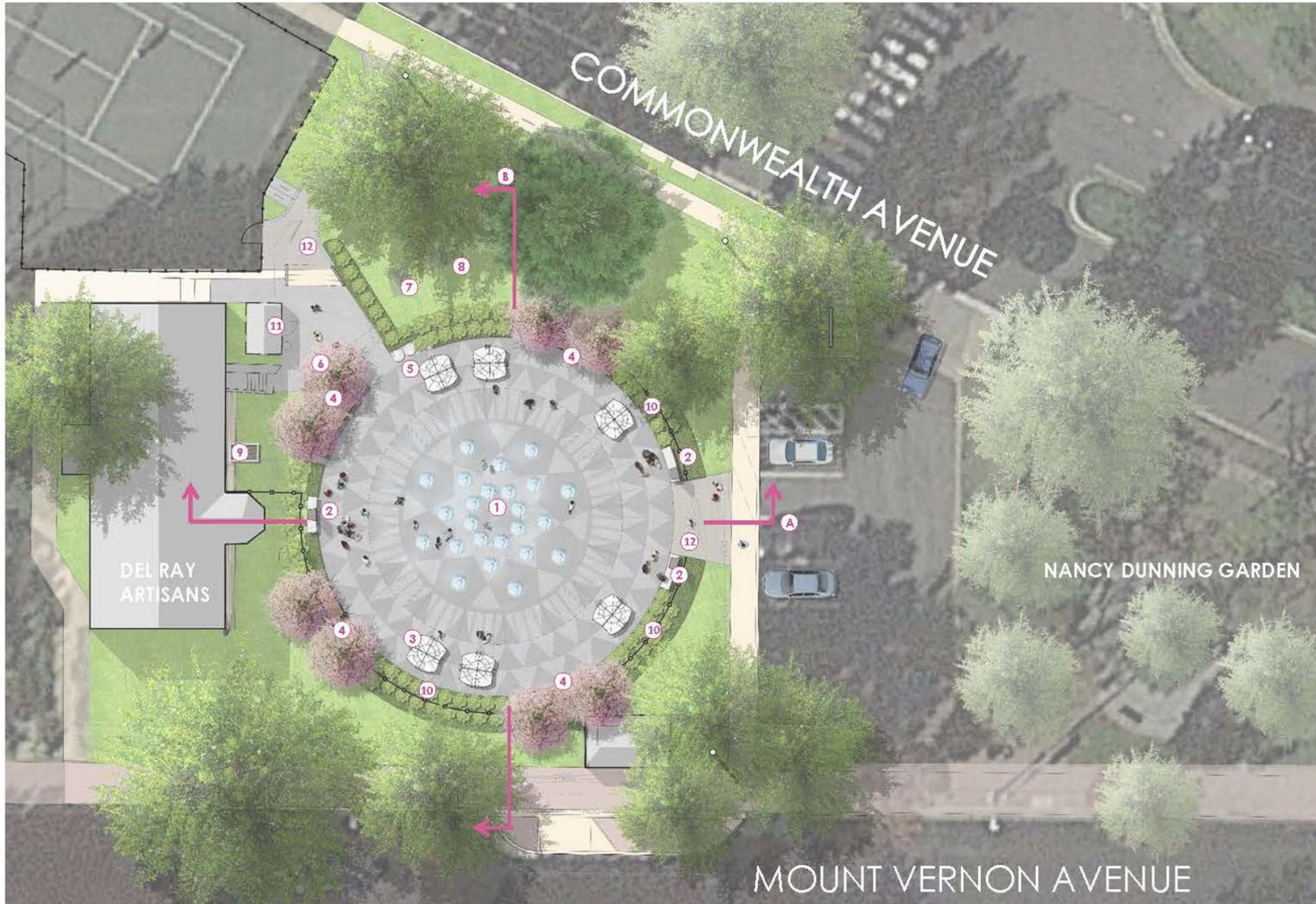
60% Design Plan View



Legend

- 1 Fountain
- 2 Public Art
- 3 Table and Chairs
- 4 Bench
- 5 Recycle And Trash Bin
- 6 Drinking Fountain and Foot Wash Station





Legend

- 1 Interactive Fountain feature
- 2 Proposed Public Art location
- 3 Table and Chairs
- 4 Bench
- 5 Recycle And Trash Bin
- 6 Drinking Fountain and Foot Wash Station
- 7 Underground Vault for Mechanical equipment
- 8 Underground vault as Balance Tank
- 9 Potential Stormwater Planter
- 10 Fence
- 11 Potential Restroom
- 12 Permeable Paving



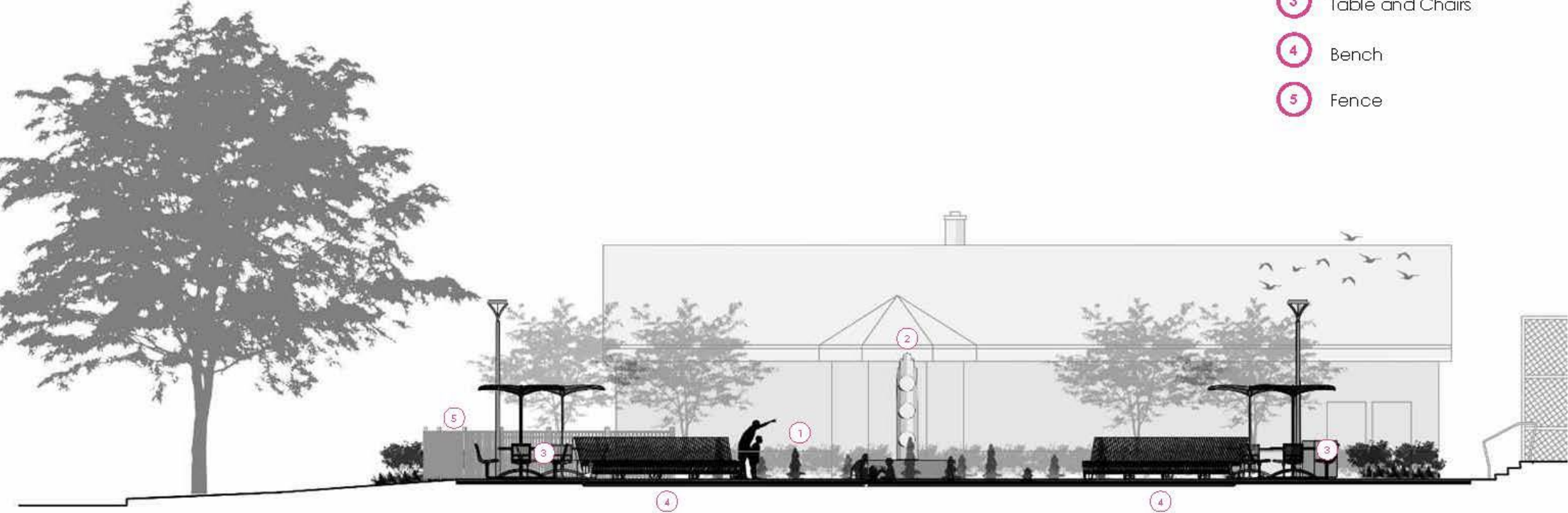
Legend

- 1 Fountain
- 2 Public Art
- 3 Table and Chairs
- 4 Bench
- 5 Fence



Legend

- 1 Fountain
- 2 Public Art
- 3 Table and Chairs
- 4 Bench
- 5 Fence





1 Project History and Milestones

2 Design Process and Revisions

3 Project Funding and Phasing

4 Public Art

5 Next Steps



Del Ray Gateway/Colasanto Interactive Fountain

- The fountain construction funding is approved and available through the Capital Improvement Program (CIP)
- Procurement is anticipated to take 6-9 months following completion of the construction documents

Del Ray Gateway/Colasanto Public Art

- The public art is funded through the City's Public Art CIP
- The public art is anticipated to be installed concurrent with the fountain construction

Del Ray Gateway/Colasanto Restrooms

- The restrooms are planned in the FY2023-FY2032 CIP
- The restrooms are anticipated to be designed and implemented separately from the fountain construction

1 Project History and Milestones

2 Design Process and Revisions

3 Project Funding and Phasing

4 Public Art

5 Next Steps



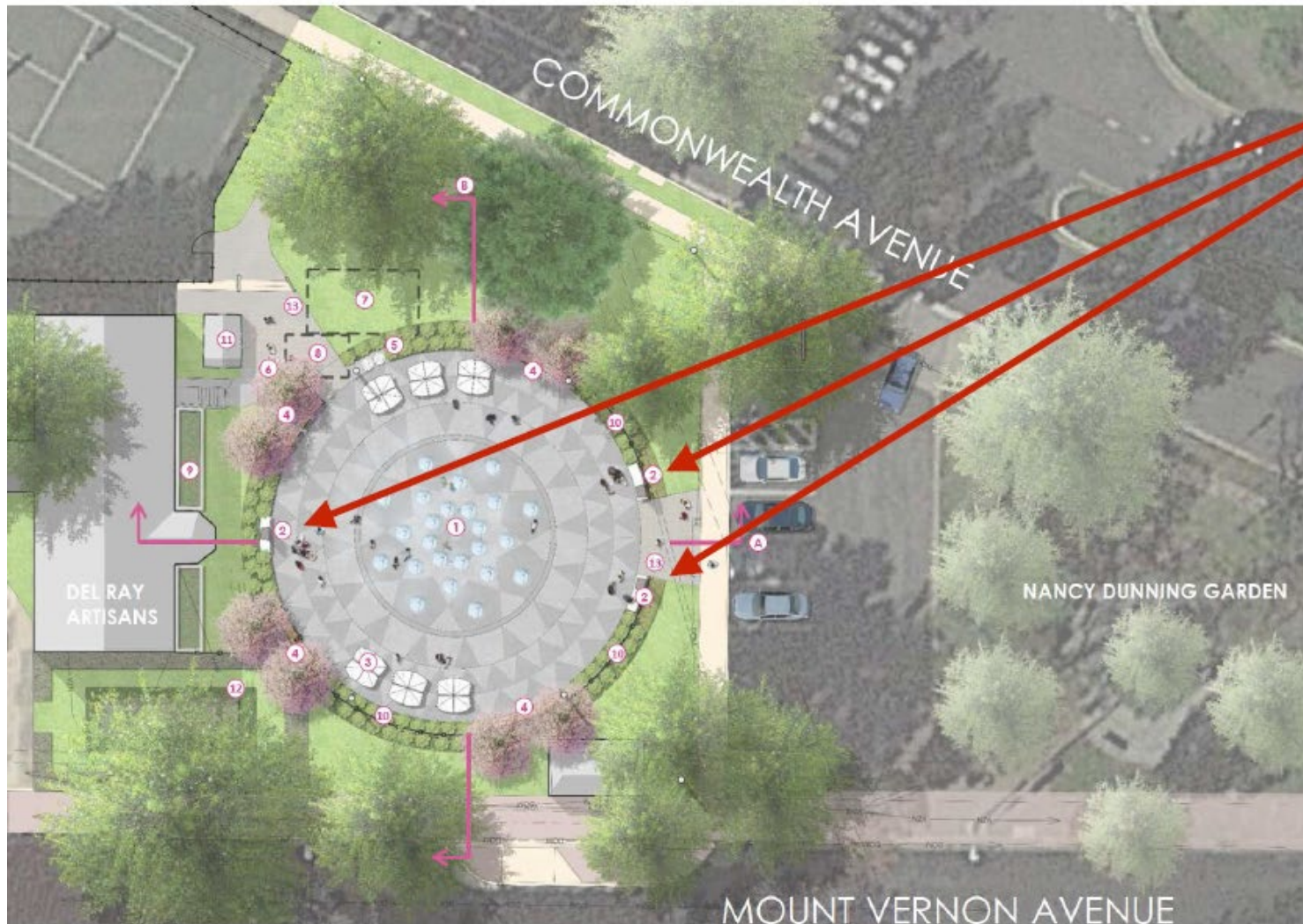
Public Art at Del Ray Gateway/Colasanto Interactive Fountain

- Beatrice Coron was selected from a national call to design and fabricate an original artwork to be integrated with the project.
- Beatrice collected community stories about Del Ray and visited the area to provide inspiration for her design.
- The public art concept was presented to the Public Art Task Force in November 2021 and approved by the Arts Commission in November 2021.
- Additional information is on the City's website at: <https://www.alexandriava.gov/publicart>



Photo by Alex Kish

Public Art at Del Ray Gateway/Colasanto Interactive Fountain



Legend

- 1 Interactive Fountain feature
- 2 Proposed Public Art location
- 3 Table and Chairs
- 4 Bench
- 5 Recycle And Trash Bin
- 6 Drinking Fountain and Foot Wash Station
- 7 Underground Vault for Mechanical equipment
- 8 Underground vault as Balance Tank
- 9 Potential Stormwater Planter
- 10 Fence
- 11 Potential Restroom
- 12 Artisans Garden
- 13 Permeable Paving

Public Art at Del Ray Gateway/Colasanto Interactive Fountain

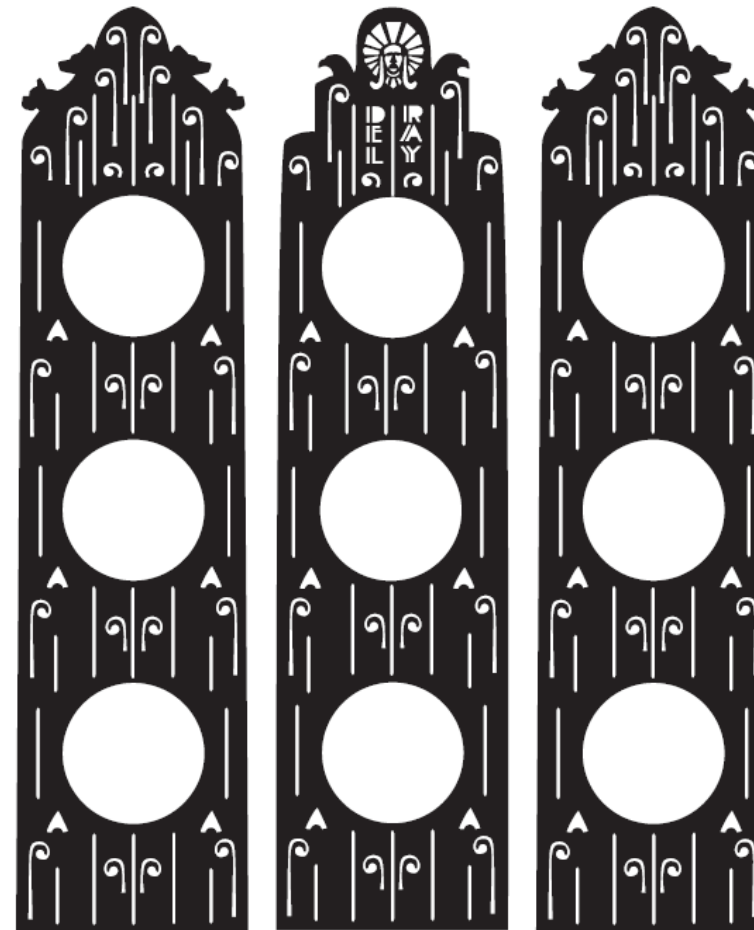
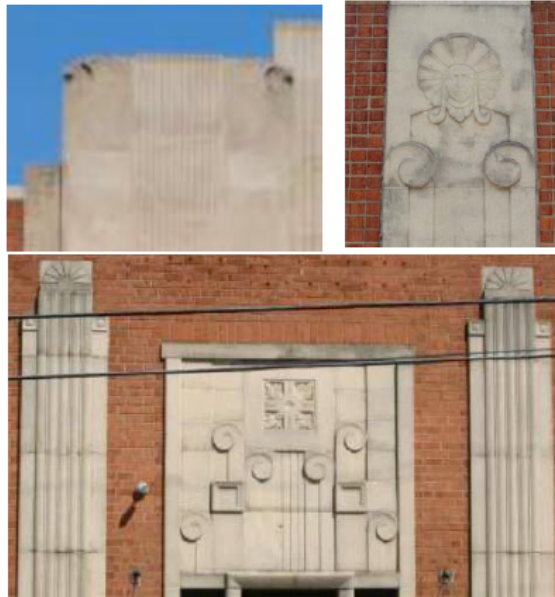
3 steles 10 x 2.5'

2 for entrance from parking lot
top of steles with dogs silhouettes

one on the opposite site near artisan center
top of steles with eagle silhouette and Del Ray inscription

Art Deco Design referencing water spray,
neighborhood life and architecture of:
Washington School
Monroe Avenue Swing Building
1509 Leslie Avenue Building

Steles design



Public Art at Del Ray Gateway/Colasanto Interactive Fountain



Public Art at Del Ray Gateway/Colasanto Interactive Fountain



Public Art at Del Ray Gateway/Colasanto Interactive Fountain

Community Discussion

1 Project History and Milestones

2 Design Process and Revisions

3 Project Funding and Phasing

4 Public Art

5 Next Steps



Next Steps

- Regulatory plan approval.
- Public Art coordination with artist Beatrice Coron.
- Completion of 100% construction documents.
- Construction procurement.

Visit the project website:

www.alexandriava.gov/recreation/default.aspx?id=120275

Contact: Bethany Znidersic, Acting Division Chief
Department of Recreation,
Parks and Cultural Activities
Bethany.Znidersic@alexandriava.gov
703.746.5492



