

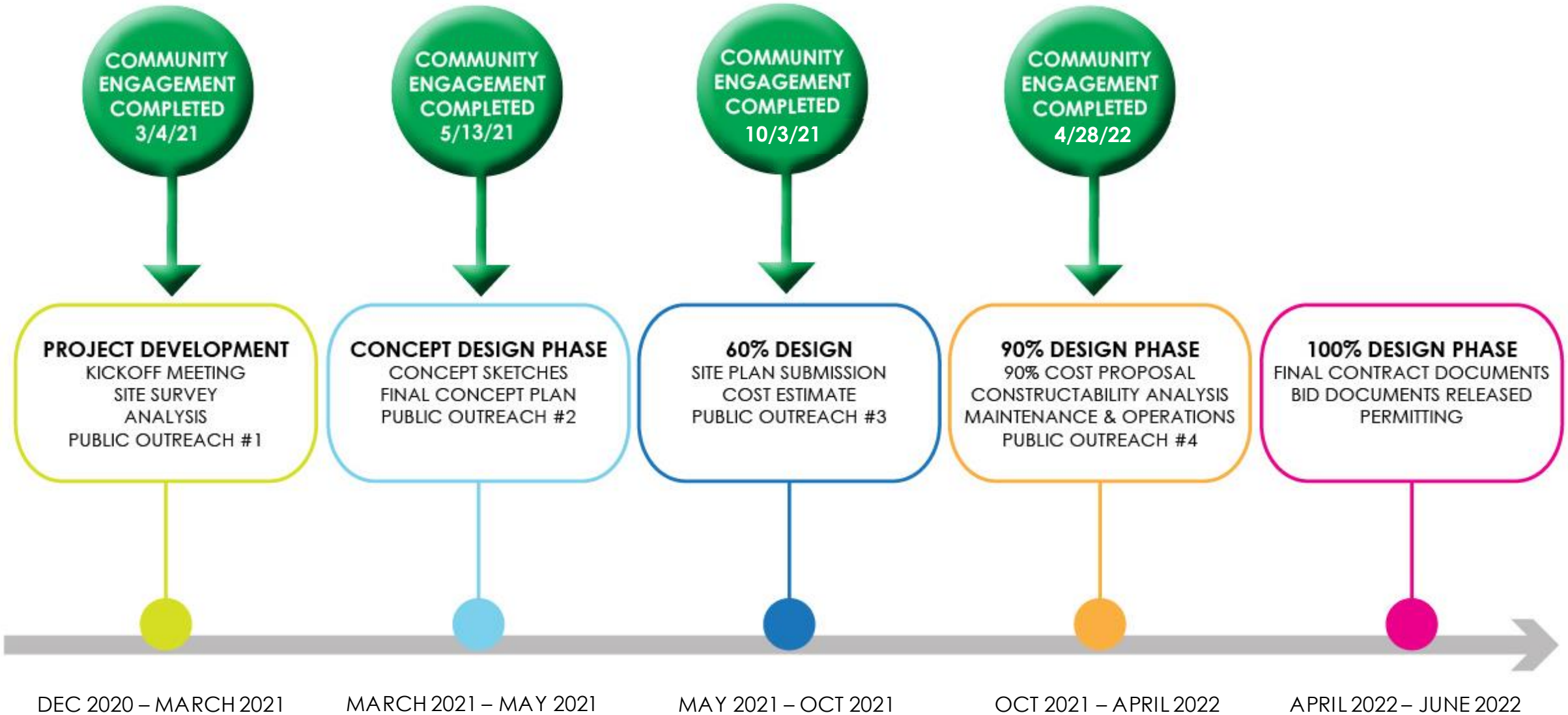
DEL RAY GATEWAY PROJECT: COLASANTO INTERACTIVE FOUNTAIN/SPRAY PARK and PUBLIC ART

Del Ray Citizens Association Meeting
June 8, 2022



Project Location





Guidelines from Needs Assessment, Community Meeting and Community Survey

- At grade aquatic facility
- Does not impact Colasanto Center building
- Multi-generational, inclusive
- Incorporates an art component
- Functions as a plaza and more
- Functions as a Del Ray gateway





Legend

- 1 Interactive Fountain feature
- 2 Proposed Public Art location
- 3 Table and Chairs
- 4 Bench
- 5 Recycle And Trash Bin
- 6 Drinking Fountain and Foot Wash Station
- 7 Underground Vault for Mechanical equipment
- 8 Underground vault as Balance Tank
- 9 Potential Stormwater Planter
- 10 Fence
- 11 Potential Restroom
- 12 Permeable Paving



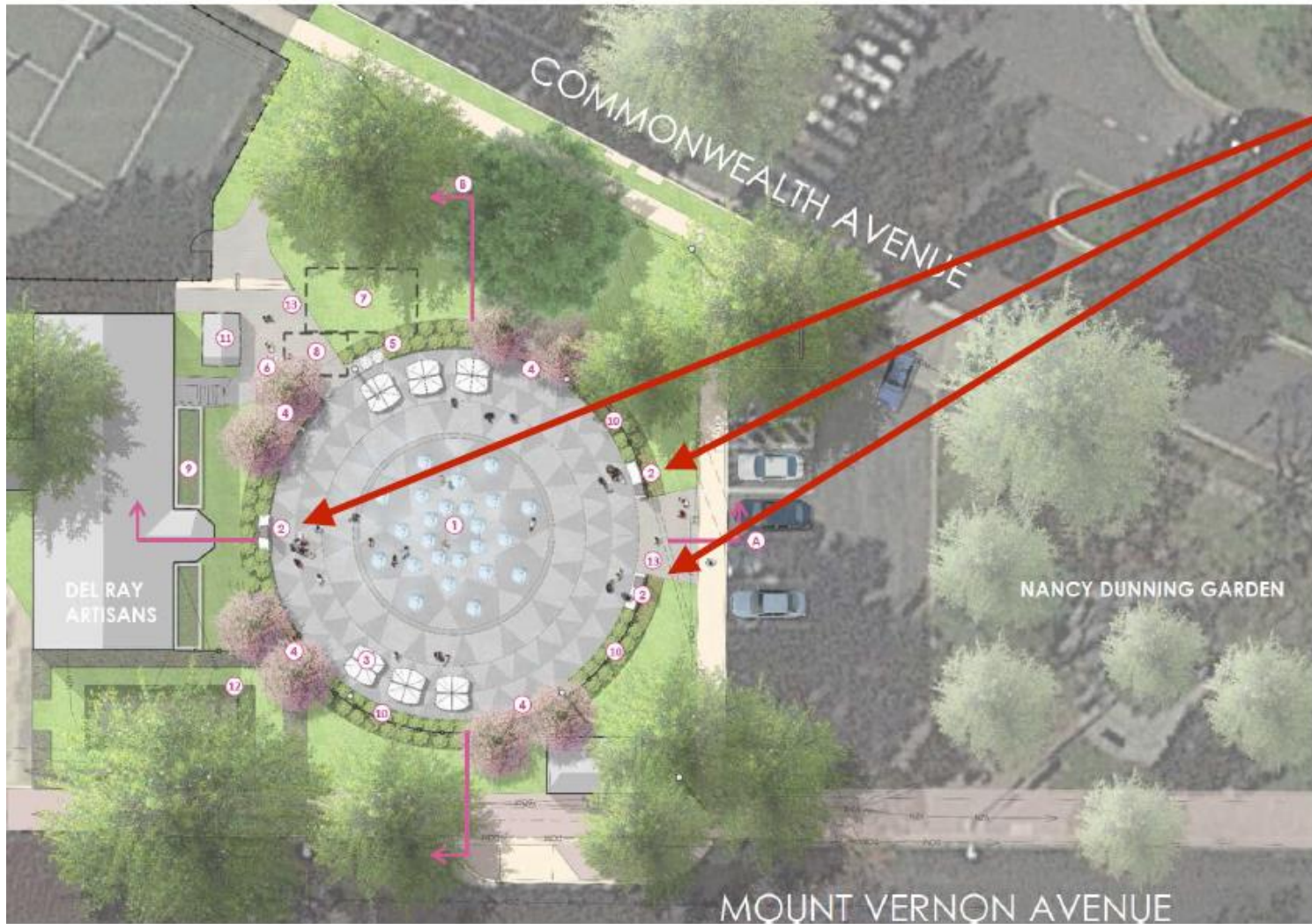


Public Art at Del Ray Gateway/Colasanto Interactive Fountain

- Beatrice Coron was selected from a national call to design and fabricate an original artwork to be integrated with the project.
- Beatrice collected community stories about Del Ray and visited the area to provide inspiration for her design.
- The public art concept was presented to the Public Art Task Force in November 2021 and approved by the Arts Commission in November 2021.
- Additional information is on the City's website at: <https://www.alexandriava.gov/publicart>



Public Art at Del Ray Gateway/Colasanto Interactive Fountain



Legend

- 1 Interactive Fountain feature
- 2 Proposed Public Art location
- 3 Table and Chairs
- 4 Bench
- 5 Recycle And Trash Bin
- 6 Drinking Fountain and Foot Wash Station
- 7 Underground Vault for Mechanical equipment
- 8 Underground vault as Balance Tank
- 9 Potential Stormwater Planter
- 10 Fence
- 11 Potential Restroom
- 12 Artisans Garden
- 13 Permeable Paving

Public Art at Del Ray Gateway/Colasanto Interactive Fountain

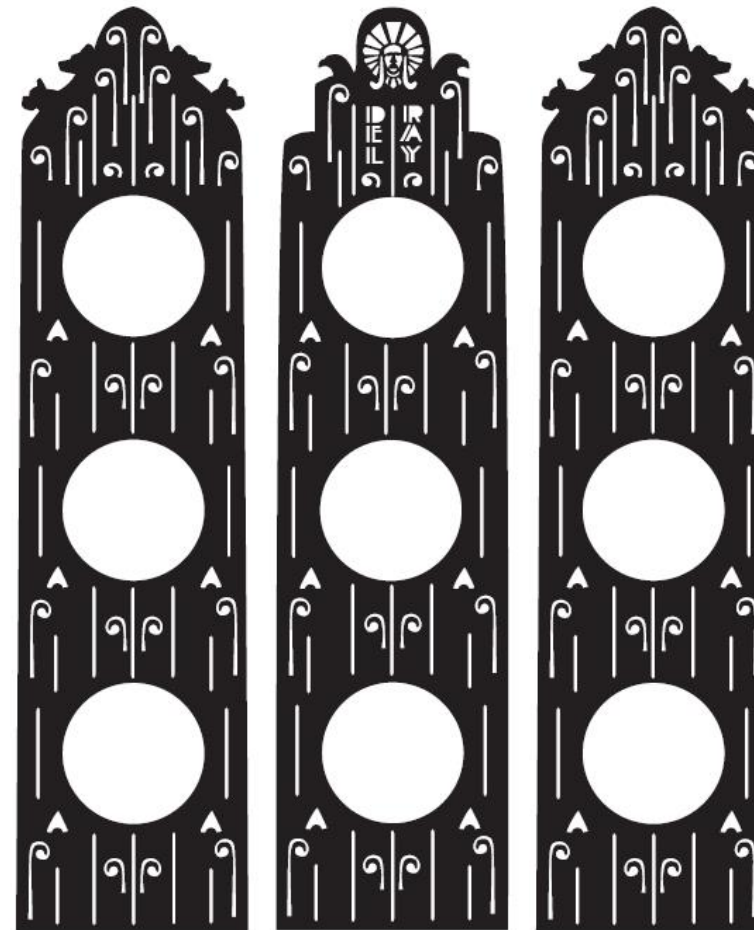
3 steles 10 x 2.5'

2 for entrance from parking lot
top of steles with dogs silhouettes

one on the opposite site near artisan center
top of steles with eagle silhouette and Del Ray inscription

Art Deco Design referencing water spray,
neighborhood life and architecture of:
Washington School
Monroe Avenue Swing Building
1509 Leslie Avenue Building

Steles design



Public Art at Del Ray Gateway/Colasanto Interactive Fountain



Public Art at Del Ray Gateway/Colasanto Interactive Fountain



Public Art at Del Ray Gateway/Colasanto Interactive Fountain

Questions?

Next Steps

- Regulatory plan approval.
- Public Art coordination with artist Beatrice Coron.
- Completion of 100% construction documents.
- Construction procurement.

Visit the project website:

www.alexandriava.gov/recreation/default.aspx?id=120275

Contact: Bethany Znidersic, Acting Division Chief
Department of Recreation,
Parks and Cultural Activities
Bethany.Znidersic@alexandriava.gov
703.746.5492





Conclusion