



Eugene Simpson Stadium Park Renovation

Park and Recreation Commission Update

June 16, 2022

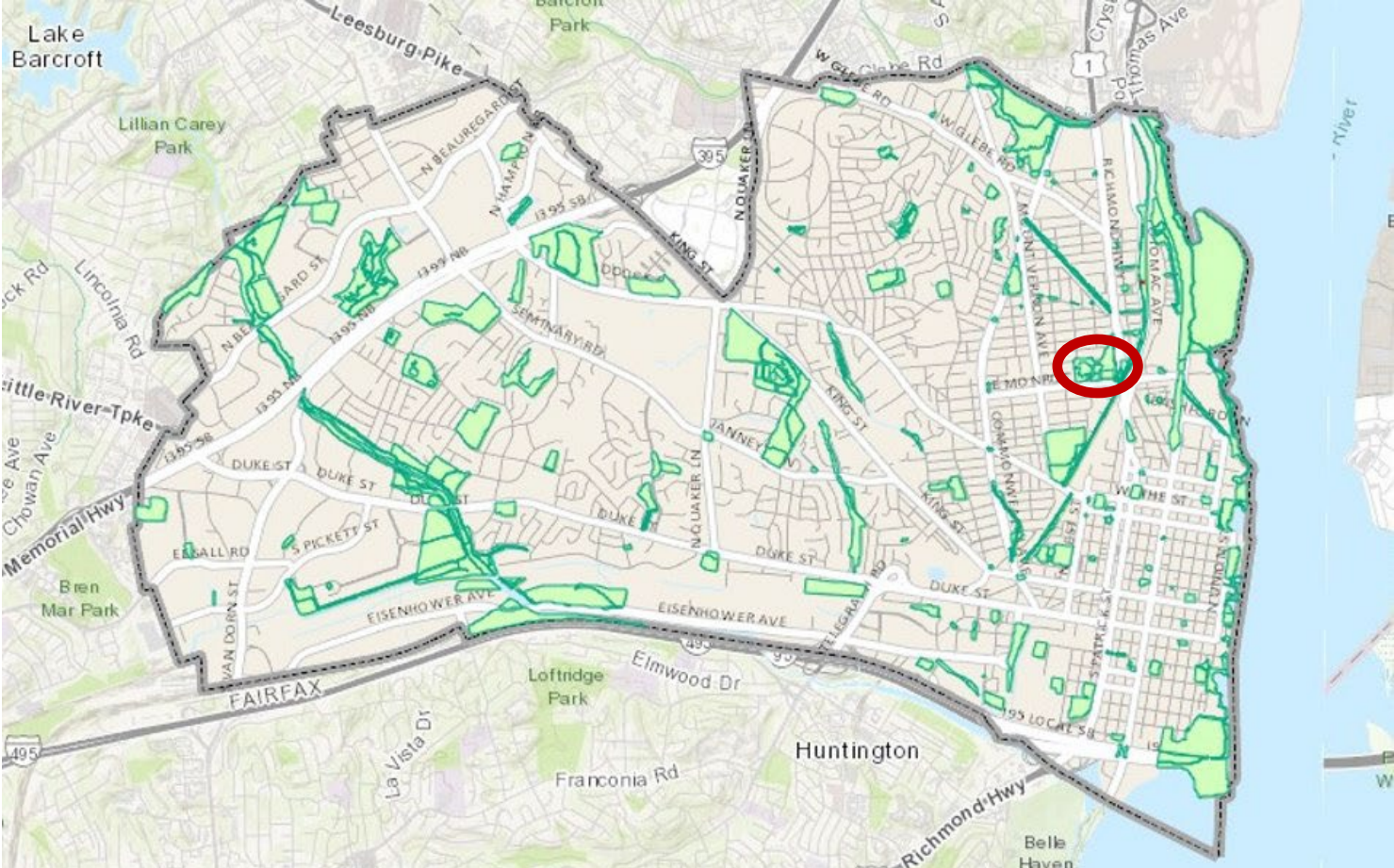
Agenda

- Review of Concept Plan
- Project Schedule
- Community Engagement Process and Stakeholders Outline

- Commission Action Requested:
 - Receive the Update
 - Provide Feedback and Input on the Community Process Elements



Project Location



Schematic Rendering



- 7. PLANT PERIMETER TREES TO CREATE "GREEN ALLEY"
- 8. PROVIDE NEW HARD TRAILS IN EAST HALF OF PARK
- 9. PROVIDE NEW FIELD ENTRANCE AND RAMP IMPROVE MAINTENANCE ROUTE TO SOCCER FIELDS
- 11. PROVIDE NEW BLEACHERS WITH EQUIPMENT STORAGE UNDERNEATH
- 12. PROVIDE NEW BLEACHERS WITH CONCESSIONS BOOTHS UNDERNEATH
- 13. CREATE PICNIC AREA NEAR CONCESSIONS
- 14. EXPAND PARKING LOT

Schematic Rendering



- 7. PLANT PERIMETER TREES TO CREATE "GREEN ALLEY"
- 8. PROVIDE NEW HARD TRAILS IN EAST HALF OF PARK
- 9. PROVIDE NEW FIELD ENTRANCE AND RAMP
- 10. IMPROVE MAINTENANCE ROUTE TO SOCCER FIELDS
- 11. PROVIDE NEW BLEACHERS WITH EQUIPMENT STORAGE UNDERNEATH
- 12. PROVIDE NEW BLEACHERS WITH CONCESSIONS BOOTHS UNDERNEATH
- 13. CREATE PICNIC AREA NEAR CONCESSIONS
- 14. EXPAND PARKING LOT

Project Schedule

2022

- June Community Engagement on Concept Plan
- Summer Design Development and Envision Process Review
- Fall Community Engagement on Revised Design

2023

- Early 2023 Park and Recreation Commission Public Hearings
- Early 2023 Development Special Use Permit Public Hearings
- Spring/Summer Final Design (90% Plans)
- Fall Complete Design and Start Procurement Process

2024-2025

- Construction

Community Engagement Process

- Summer Outreach
 - Direct Outreach to Stakeholder Groups (early June)
 - Youth Sports Advisory Board (6/13)
 - Park and Recreation Commission (6/16)
 - Message Boards/Kiosk Notices
 - Graffiti Boards
 - Online Survey
 - Potential Community Meeting on Site
- Park Stakeholder Groups
 - Adjacent Neighborhood
 - Kettle Park Community Partners
 - Sports User Groups
 - Alexandria City High School
 - Simpson Park Dog Owners Group



Eugene Simpson Park Ball Field Renovations

Design: 2021 to 2023 → Construction: 2024 to 2025

Tell the City, plan your Park!



Project Goals:

#1 Plant Trees along the northern alleyway

#2 Provide hardscape trails in the east half of the park

#3 Provide new ADA access from Monroe Ave.

#4 Install new bleachers, equipment storage and concessions

#5 Create a picnic area near the concessions

#6 Expand the parking lot and improve circulations

#7 Improve the turf at Big Simpson with option for synthetic turf

#8 Improve natural turf drainage at Little Simpson



Commission Feedback

Schematic Rendering



- 7. PLANT PERIMETER TREES TO CREATE "GREEN ALLEY"
- 8. PROVIDE NEW HARD TRAILS IN EAST HALF OF PARK
- 9. PROVIDE NEW FIELD ENTRANCE AND RAMP IMPROVE MAINTENANCE ROUTE TO SOCCER FIELDS
- 11. PROVIDE NEW BLEACHERS WITH EQUIPMENT STORAGE UNDERNEATH
- 12. PROVIDE NEW BLEACHERS WITH CONCESSIONS BOOTHS UNDERNEATH
- 13. CREATE PICNIC AREA NEAR CONCESSIONS
- 14. EXPAND PARKING LOT



Next Steps

Summer/Fall 2022:

- Concept Design Community Engagement
- City and ACPS Interdepartmental Coordination
- Design Revisions

Additional information:

Mitch Dillon, Project Manager, DPI

Mitch.Dillon@alexandriava.gov

Bethany Znidersic, Division Chief, RPCA

Bethany.Znidersic@alexandriava.gov



SIMPSON PARK: EXISTING CONDITIONS

- HARD TRAILS
- BIKE ROUTE
- ATHLETIC FIELDS
- PARK BOUNDS



- ### KEYED LEGEND
1. WIDEN PATH 6-8 FEET TO ENABLE NORTH-SOUTH STANDARD PATHWAY
 2. ADJUST PLAYGROUND BORDERS, IMPROVE ENTRANCES, AND ADD NATURAL PLAY
 3. ADD STROLLER PARKING AND PLAZA AT PLAYGROUND ENTRANCE
 4. CREATE OPEN-USE AREA AND IMPROVE PLANTINGS IN PASSIVE USE AREAS
 5. CONNECT PATHWAY TO E. DUNCAN AVE
 6. USE BOLLARDS TO LIMIT PATHWAY DRIVING ACCESS TO MAINTENANCE VEHICLES
 7. PLANT PERIMETER TREES TO CREATE "GREEN ALLEY"
 8. PROVIDE NEW HARD TRAILS IN EAST HALF OF PARK
 9. PROVIDE NEW FIELD ENTRANCE AND RAMP
 10. IMPROVE MAINTENANCE ROUTE TO SOCCER FIELDS
 11. PROVIDE NEW BLEACHERS WITH EQUIPMENT STORAGE UNDERNEATH
 12. PROVIDE NEW BLEACHERS WITH CONCESSIONS BOOTHS UNDERNEATH
 13. CREATE PICNIC AREA NEAR CONCESSIONS
 14. EXPAND PARKING LOT
 15. ENCOURAGE USE OF FORTY FIVE TOTAL ON-STREET PARKING SPACES ALONG E MONROE AVE AND MAIN LINE BLVD FOR SOCCER FIELD USE
 16. IMPROVE DOG PARK TO INCLUDE LIGHTING, TERRACED HILL, TREES, AND PLAY FEATURES
 17. ADD MAINTENANCE STORAGE SHELTER AND YARD BETWEEN FIELDS
 18. ADD VEGETATED BIOSWALE ALONG DOG PARK EDGE AND AT MAINTENANCE YARD



2014 Citywide Parks Improvements Plan

GRAPHIC KEY

HARD TRAILS	PARK BOUNDS	OPEN USE AREAS	ENTRANCE PLAZAS	ATHLETIC FIELDS	DOG PARK
BIKE ROUTE					