

## History on the Rocks: Gadsby's Historic Ice Well

# A Monteith? Isn't he on Glee?

**Ice Well Temp: 43: Alexandria Temp: 49**

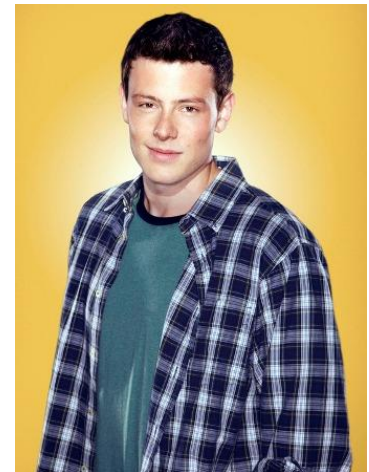
In the collection of Gadsby's Tavern Museum, we have a beautiful silver piece that to an untrained eye could be a big fruit bowl. It has a scalloped edge at the top, was created in France, is silver plate, has very little decoration and is marked with Gadsby on the bottom.



*Our Monteith*

What do you think it is? Well, it is called a [Monteith](#). It gets its name from a Scotsman who lived in the late 1600s and supposedly wore a cloak with a scalloped edge. Google the word and you most likely get Cory Monteith from Glee.

On closer observation our Monteith does not sing or play football, but functions to chill a glass. Each indentation between the half circles would hold the stem of a glass as the bowl of said glass was cushioned on top of the ice below. So today we stick beer bottles the ice, in the 18 century they put the glasses of the ice to get cold. Mr. Gadsby having plenty of ice from his ice well used this Monteith to impress his guests as they enjoyed a chilled beverage in the hot Virginia springs and summers.



*Cory Monteith*

Maybe today we can fill it with a slushie and it might chill glasses just as well. Science Geek Interjection: for those keeping track at home, as of yesterday, we have removed a total of 252 gallons of water, 32% of the total. So buy your raffle tickets today!