



# POTOMAC YARD METRORAIL STATION PROJECT

Potomac Yard Metrorail Implementation Work Group  
October 24, 2022



# AGENDA

- Shutdown and Project Update
  - Fred Robertson, WMATA
- Look Ahead Schedule
  - Fred Robertson, WMATA
- Upcoming Meetings

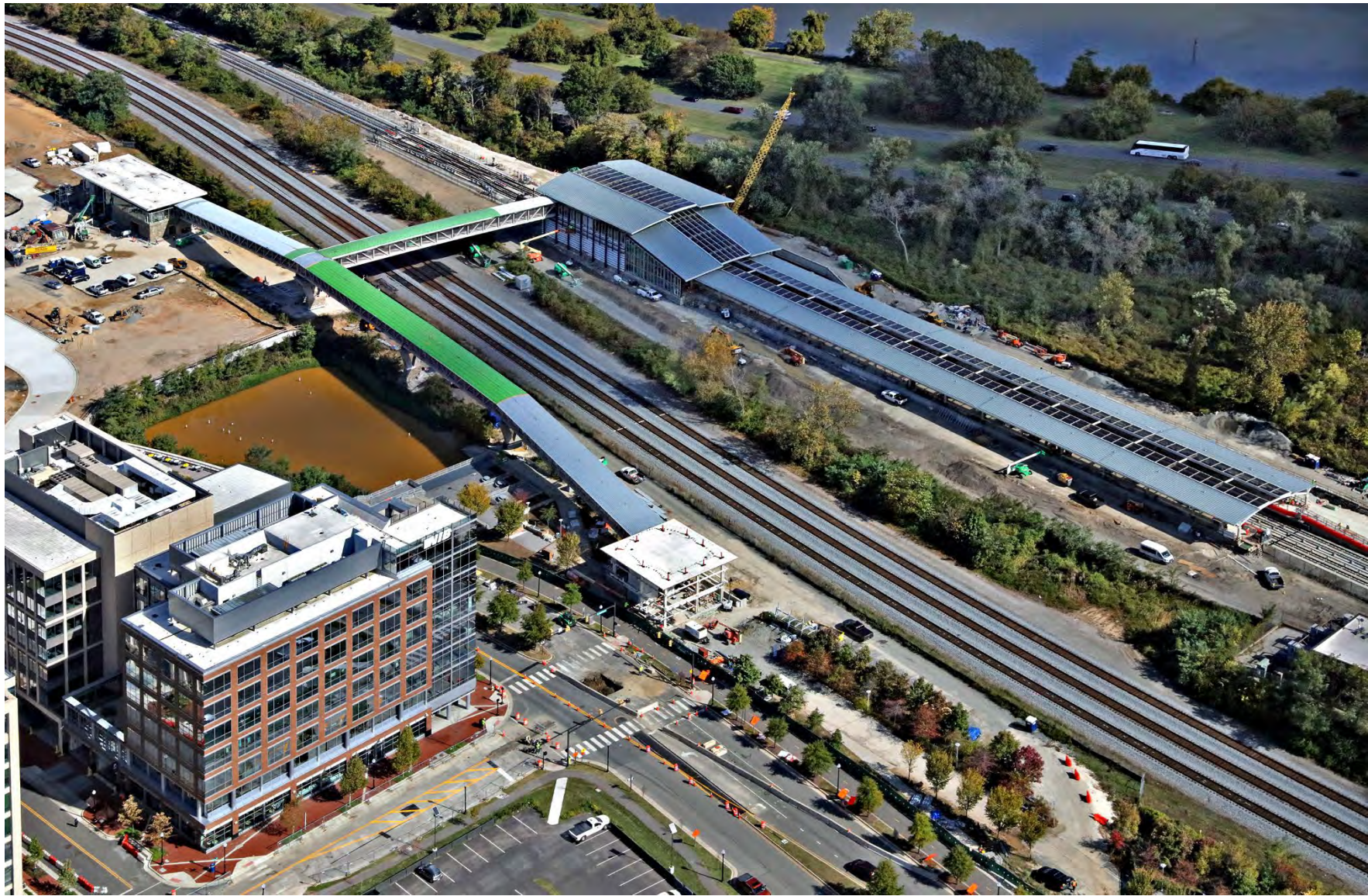


# Construction Activity Update

# STATION AERIALS - LOOKING NW



# STATION AERIALS - LOOKING NE



# STATION AERIALS - LOOKING SW



# STATION AERIALS - LOOKING SE



# STATION - WEST SIDE LOUVERS & CURTAIN WALL





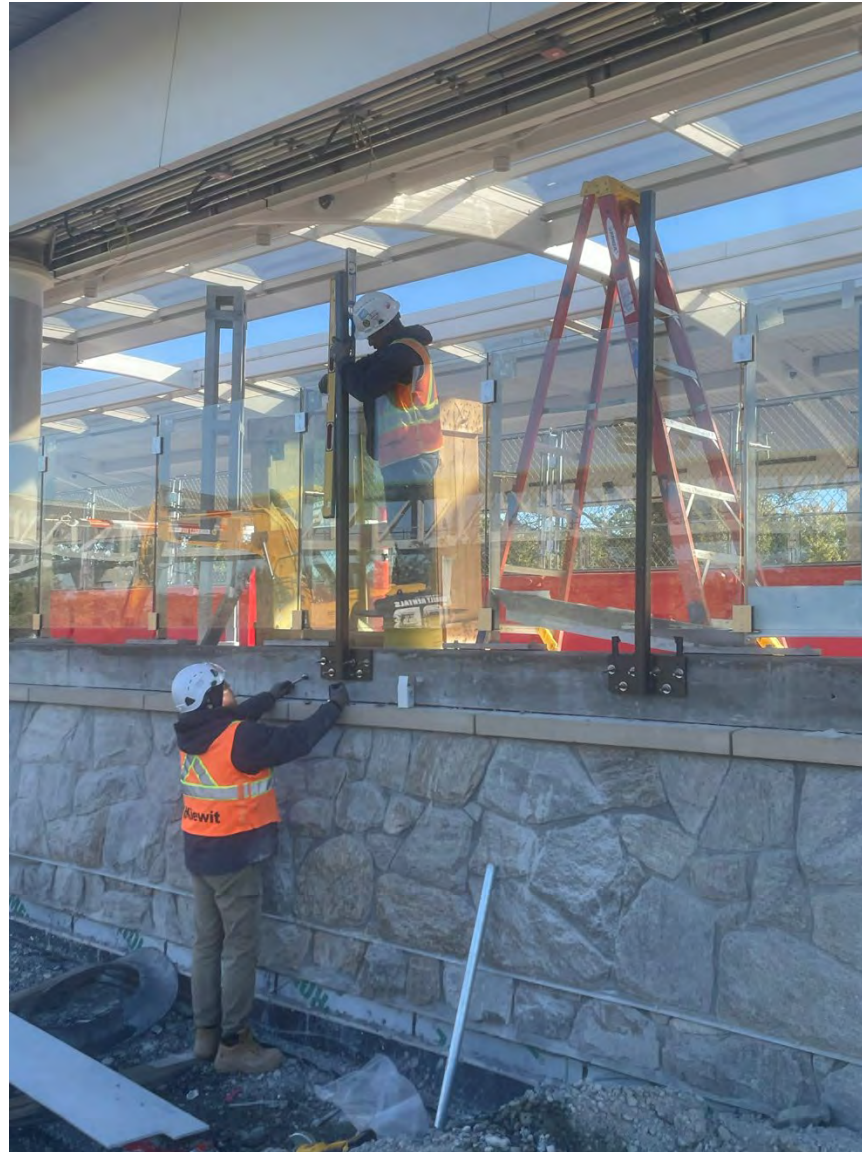
# ○ EAST PLATFORM - LOOKING SOUTH



# ○ EAST PLATFORM - LOOKING NORTH



# WEST PLATFORM - SIGNAGE INSTALLATION



# WEST PLATFORM - SIGNAGE INSTALLATION



# EAST SIDE - WALL BACKFILL AND CIVIL WORK



# EAST SIDE - WALL BACKFILL AND CIVIL WORK



# EAST SIDE - RETAINING WALL WORK



# MEZZANINE LEVEL - LOOKING NORTH





# MEZZANINE LEVEL - SCREEN WALL



# MEZZANINE - EXTERIOR STAINLESS PANELS



# MEZZANINE - KIOSK INSTALLATION



# MEZZANINE - EAST ELEVATOR



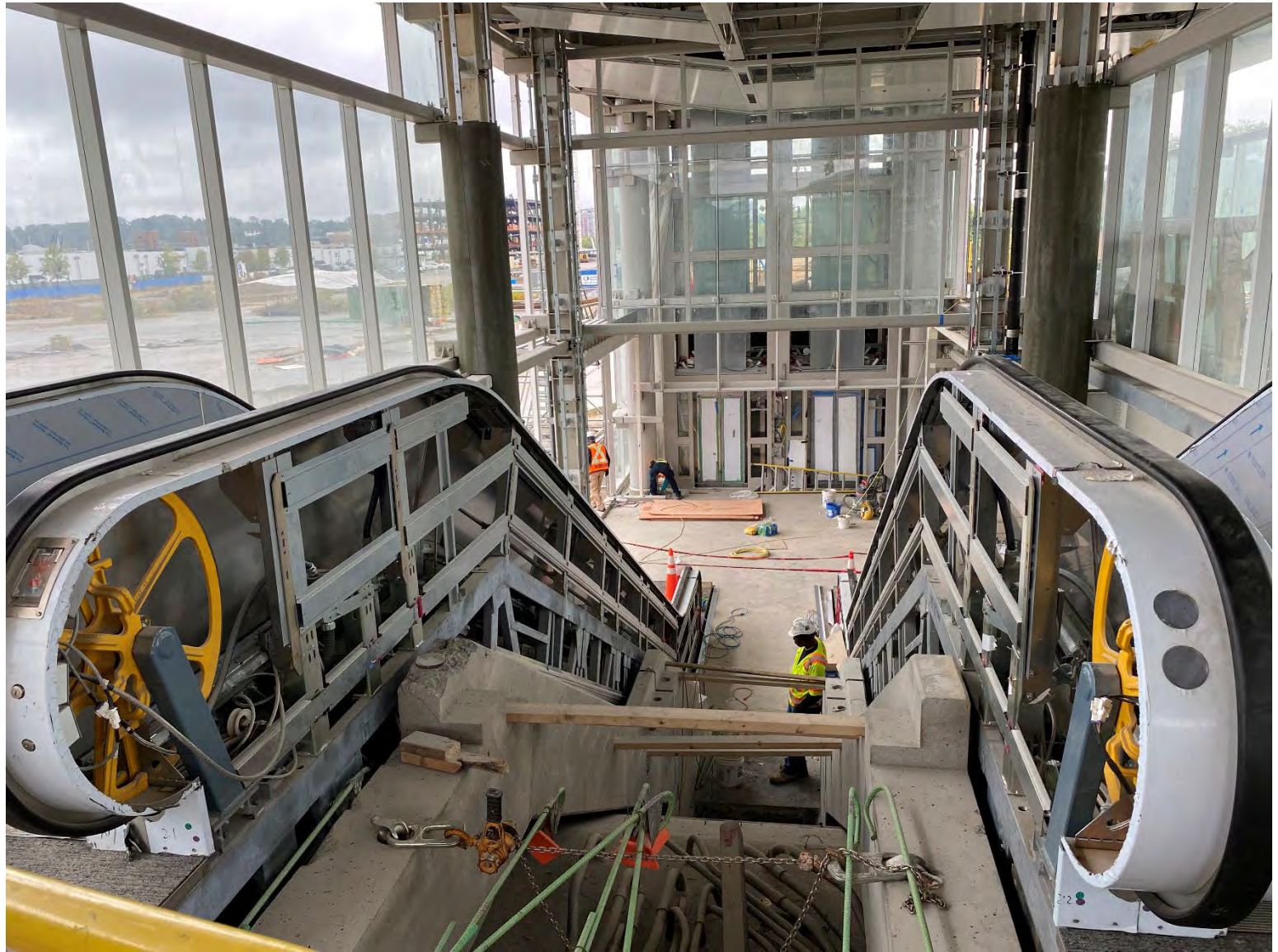
# STATION - BOTTOM OF ELEVATOR HOISTWAY



# NORTH PAVILION - TOWARD PED BRIDGE



# NORTH PAVILION - LOOKING NORTH INTERIOR



# PEDESTRIAN BRIDGE - NORTH PAVILION SPAN





# PEDESTRIAN BRIDGE - STATION SPAN



# PEDESTRIAN BRIDGE - SOUTH PAVILION



# SOUTH PAVILION



# STATION - SITEWORK WEST OF STATION



# STATION - FIRST TRAIN PASS



# STATION - TRAIN TESTING



# STATION - TESTING PASS



# STATION - TRAIN TESTING

## Train Control Testing Status (as of 10/24/2022)

### Completed Tests (~430 hours)

WTP 1.1 (A) - Power Racks & Energy Distribution
WTP 1.2 (A) - Breakdown Test of Vital Circuits & Interlocking Control Circuits
WTP 2.40 (A) - Ethernet Setup and Test
WTP 1.11 (A) - Checkout of Impedance Bonds
WTP 1.12 (A) - Lamp Circuitry and Signal Performance
WTP 1.13 (A) - Wiring & Adjustment to Switch & Lock Movements
WTP 2.1 (A) - Adjustment of ATP Track Modules
WTP 2.24 (A) - Testing of 60 Hz, Single Rail AC Track Circuits
WTP 2.7 (C) - Station Stopping Distance Markers - Installation Checkout
WTP 2.12 (A) - Inductive Track Loop Test
WTP 1.23 (B) - Verification of Speed Command Logic
WTP 2.6 (E) - Wayside Coding System Test (Fiber Optic System Interface Test)
WTP 2.15 (A) - Operating Test of Line Circuits between adjacent TCRs
WTP 2.8 (B) - IDW Local Test
WTP 2.31 (C) - Interlocking Control Panel Operation
WTP 2.13 (A) - Interlocking Plant Test
WTP 1.7 - 1.9 (C) - TWC Receiver, Transmitter and Flyby Test
WTP 2.2 (C) - Door and Dwell Control Subsystem Test
WTP 2.4 (B) - Testing of Program Stop and Edgelight Control
WTP 6.0 (D) - Central to Wayside Interface
WTP 2.17 (B) - Wayside/Car Interface Checkout
WTP 2.18 (C) - Marker Coil Validation Test
WTP 2.19 (C) - Station Control Tests
WTP 2.20 (B) - Wayside Train Detection and Protection Test
WTP 2.41 (A) - Microlok Fail Over Test
WTP 2.29 (E) - Ground Detector Functional Tests

### Remaining Tests (~150 hours)

WTP 2.21 (B) - Safe Braking Distance Test(IN PROGRESS)
WTP 1.20 (E) – Snow Melter Layouts and Controls – Checkout
WTP 2.25 (E) – Snow Melter Control Units - High Voltage
WTP 2.42 (E) - Event Recorder Test
WTP 2.28 (E) - Fuse Size, Circuit Breaker Size, Load Sharing, and Automatic transfer Switch
WTP 20.1 (F) - Console/Station/Interlocking Test
WTP 20.2 (F) - Console/Station/Train Test
WTP 20.4 (F) - Operation of Mainline Interlockings by Central Computer with One or More Trains



# CONSTRUCTION LOOK AHEAD SCHEDULE

ACTIVITY	2022					2023	
	AUG	SEP	OCT	NOV	DEC	JAN	FEB
CUT OVER		█	█				
WEST SIDE REMOVE TRACKS/DRAINAGE/ACSG ACCESS			█	█	█	█	
PLACE FILL FOR STATION	█	█	█	█			
EGRESS RAMPS/LIGHTING/FENCING/PAVING/ETC			█	█	█		
INSTALL ROOF/GLASS/STONE/FINISHES AT STATION	█	█	█				
INSTALL ELECTRICAL/MECHANICAL/PLUMBING	█	█	█	█			
PEDESTRIAN BRIDGES - DECK/ROOF/MEP	█	█	█	█			
TESTING/COMMISSIONING	█	█	█	█	█		
SOUTH PAVILION - FINISHES	█	█	█	█	█	█	
PUNCHLIST			█	█	█	█	█
LANDSCAPING/RESTORATION				█	█	█	█



# UPCOMING PYMIG MEETINGS

- Standing Meetings: 4th Monday of each month
- Upcoming Dates:
  - November -Posting
  - December - Posting



# Thank You

Submit questions and feedback  
to Daphne Kott

[Daphne.Kott@alexandriava.gov](mailto:Daphne.Kott@alexandriava.gov)

703.746.4055