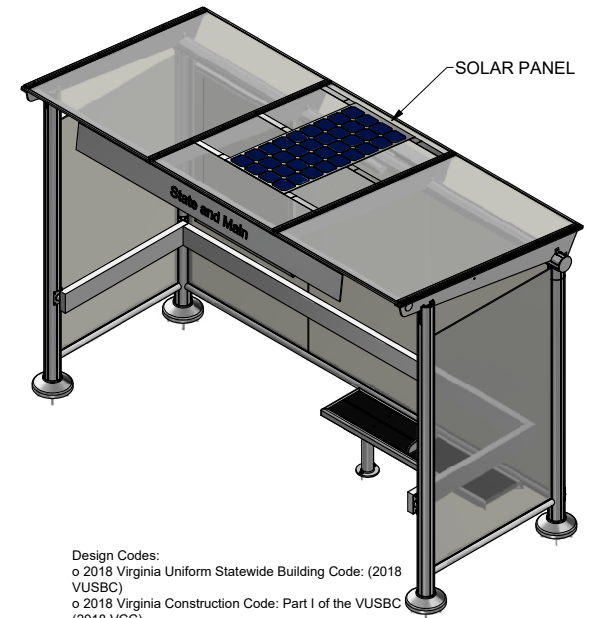
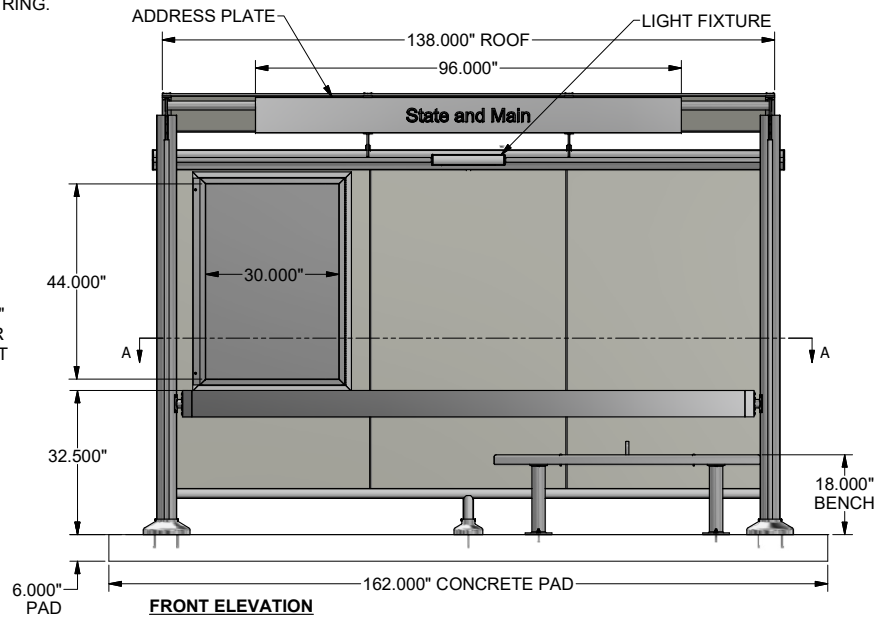
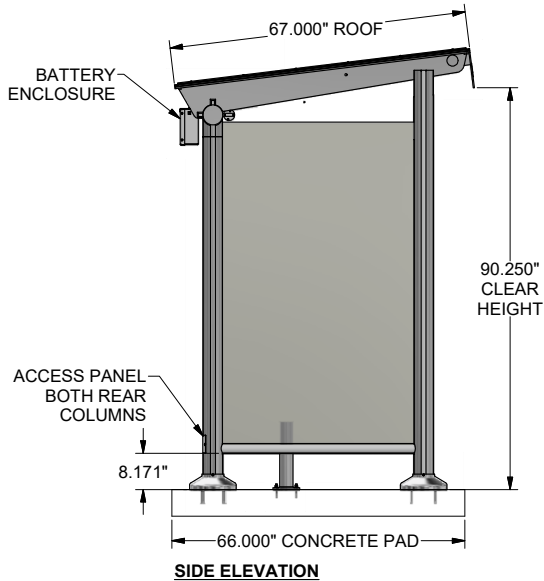
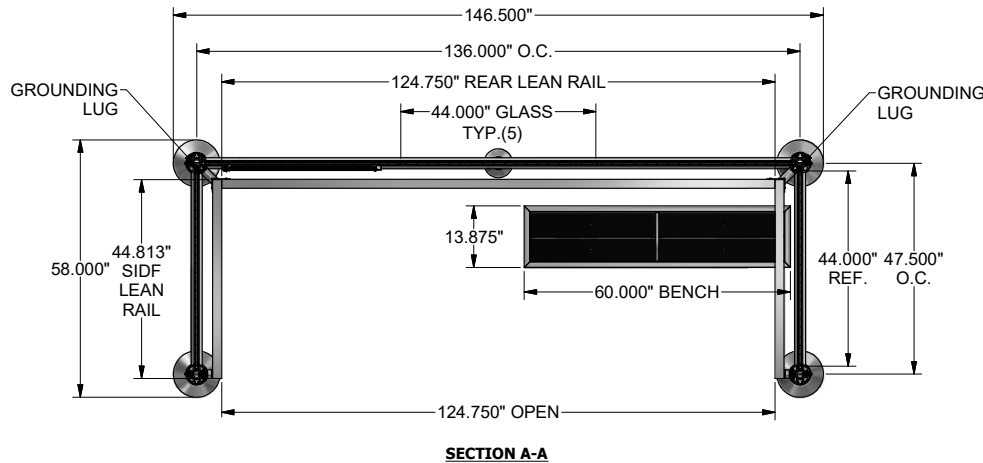


- HEADER AND REAR COLUMNS TO BE PREPPED WITH PULL STRING.



Design Codes:  
 o 2018 Virginia Uniform Statewide Building Code; (2018 VUSBC)  
 o 2018 Virginia Construction Code: Part I of the VUSBC (2018 VCC)  
 o Handicapped Accessibility: 2010 ADA Standards for Accessible Design - 9/15/2010 (2010 ADA Standards) for the Prototype Bus Shelter and mounting floor slab.  
 o Accessibility Guidelines for Pedestrian Facilities in the Public Right-of-Way; Public Rights-of-Way Accessibility Guidelines - 7/26/2011 (PROWAG). Required for the site adaptation approaches to the Prototype Bus Shelter.  
 o Per CPSM 4.2.2, including 4.2.2.8: accessible facilities must be provided at the completion of construction. Additionally, per CPSM 4.2.2.8; all areas and spaces normally occupied by employees or the public in state-owned buildings, individually or shared, shall be fully accessible.  
 Structural Design Data  
 o Roof Live Load, per VUSBC 1603.1.2; 20 psf  
 o Floor Live Load, per VUSBC 1603.1.1; 100 psf  
 o Roof Snow Load Data, per VUSBC 1603.1.3; 25 psf  
 o Wind Design Data, per VUSBC 1603.1.4 - Wind Speed (mph); (Ultimate Wind Speed) 111mph  
 o Wind Exposure Category; C  
 o Risk Category, per VUSBC 1604.5; II  
 o Seismic Design Category B  
 o Seismic Site Class D been  
 o Soil bearing requirements 1500 psf  
 o VUSBC Construction Type; IIB  
 o (Use) Group(s) per VUSBC; U  
 o Building Gross Floor Area 43 SF  
 o Building Area (per VUSBC definition) 43 SF  
 o Height of Building; 8 ft  
 o Number of Stories; 1 Story  
 o Construction Type - Type IIB  
 o Occupancy Classification - Group U

CONCRETE THICKNESS: 6"  
 CONCRETE PAD LENGTH: 13'-6"  
 CONCRETE PAD WIDTH: 5'-6"  
 REINFORCEMENT: #4 @ 16" EW

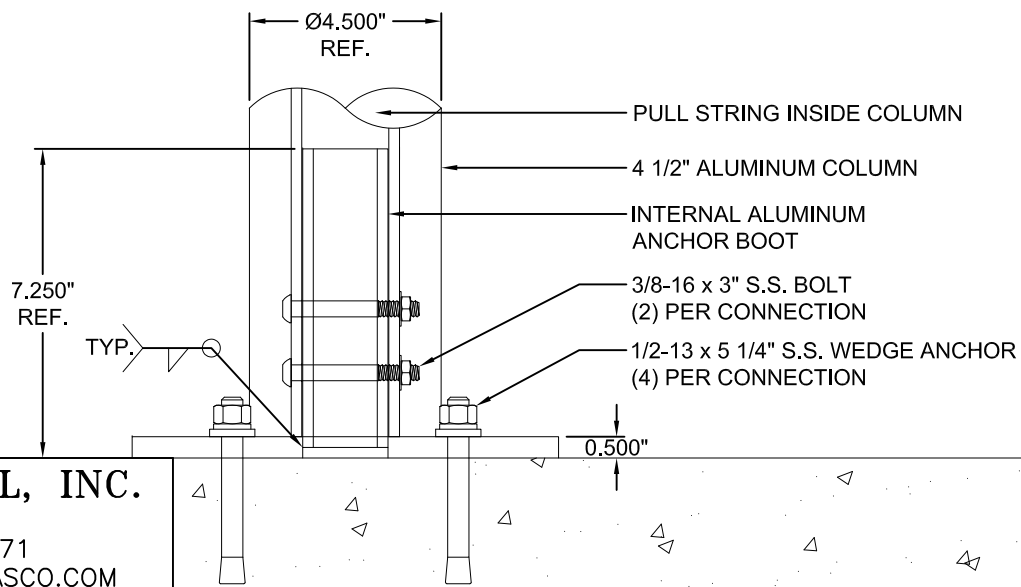
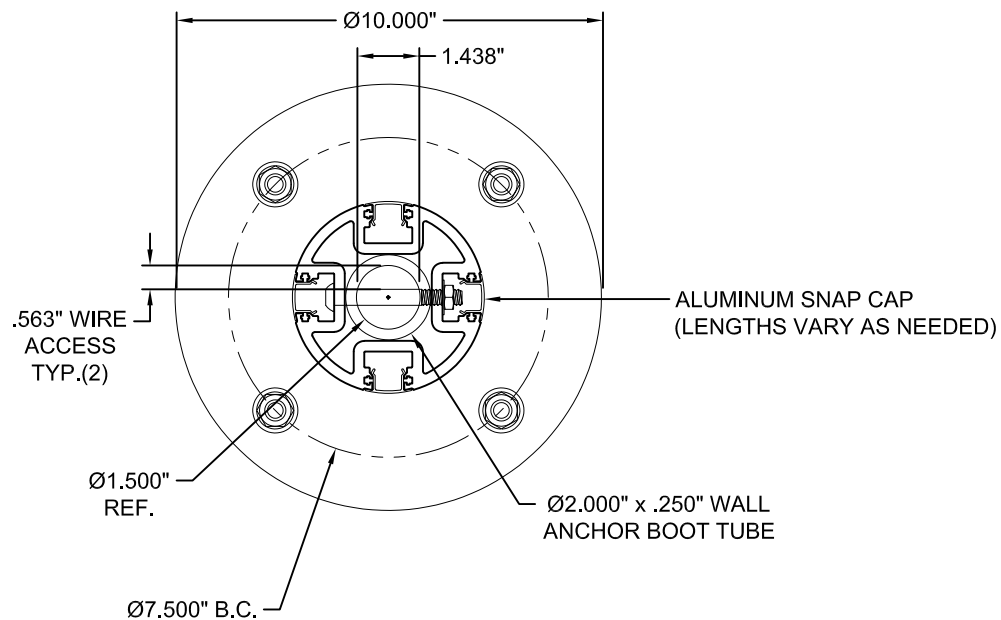


**QUANTITY (XX) SHELTERS THUS**

**SPECIFICATIONS:**

- RAL9017 TRAFFIC BLACK POWDER COATED ALUMINUM STRUCTURE
- 3/8" CLEAR LAMINATED SAFETY GLASS
- 5' ECLIPSE BENCH WITH BLACK HDPE SLATS AND (1) SEAT DIVIDERS
- 30" x 44" VIEWABLE DISPLAY CASE (REAR WALL)
- 2" x 6" ALUMINUM LEAN RAIL (INTERIOR)
- SPUN ALUMINUM ANCHOR PLATE COVERS
- 96" ALUMINUM ADDRESS PLATE WITH VINYL GRAPHIC (T.B.D.)
- 3/8" GREY POLYCARBONATE SLOPED ROOF
- SOLAR POWERED LIGHTING PACKAGE WITH L.E.D. LIGHT FIXTURE AND BATTERY ENCLOSURE

|  |   |                            |           |                       |        |           |           |          |     |
|--|---|----------------------------|-----------|-----------------------|--------|-----------|-----------|----------|-----|
|  | BRASCO INTERNATIONAL, INC.<br>32400 INDUSTRIAL DR.<br>MADISON HEIGHTS, MICHIGAN 48071<br>1-800-893-3665 WWW.BRASCO.COM  |                            | CUSTOMER: | CITY OF ALEXANDRIA    |        | DESIGNER: | HAUS      | CHECKER: | BDH |
|  | THIS DRAWING IS CONFIDENTIAL AND IS FOR THE SOLE USE OF OUR CUSTOMERS AND MAY NOT BE REPRODUCED OR COPIED WITHOUT WRITTEN PERMISSION FROM BRASCO INTERNATIONAL. |                            | PROJECT:  | ECLIPSE STYLE SHELTER |        | DATE:     |           | DATE:    |     |
|  | MODEL:  | EC-0512-F-0-FL-PC-LG-0-0-0 | JOB #     | 6899                  | SHEET: | S-001     | REVISION: | A        |     |

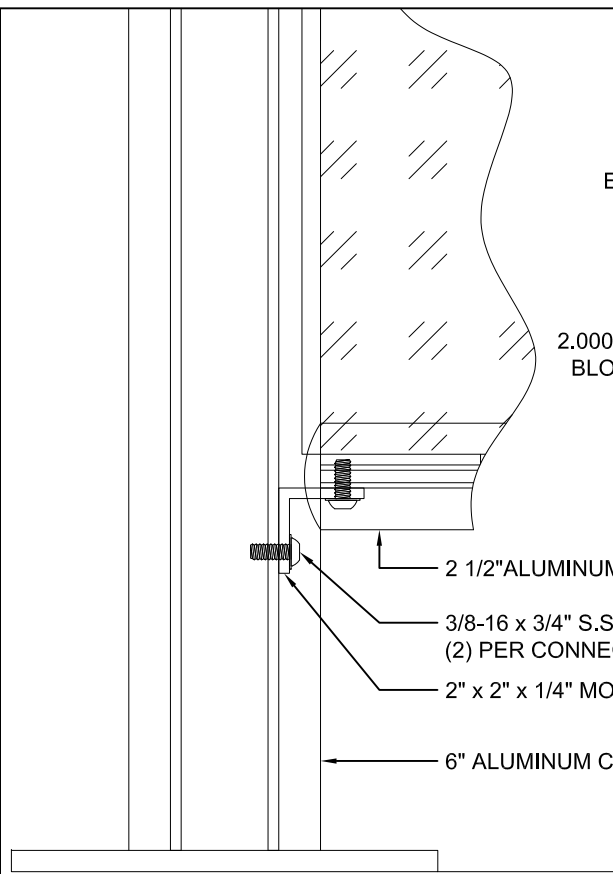


**BRASCO INTERNATIONAL, INC.**  
 32400 INDUSTRIAL DRIVE  
 MADISON HEIGHTS, MI 48071  
 1-800-893-3665 WWW.BRASCO.COM

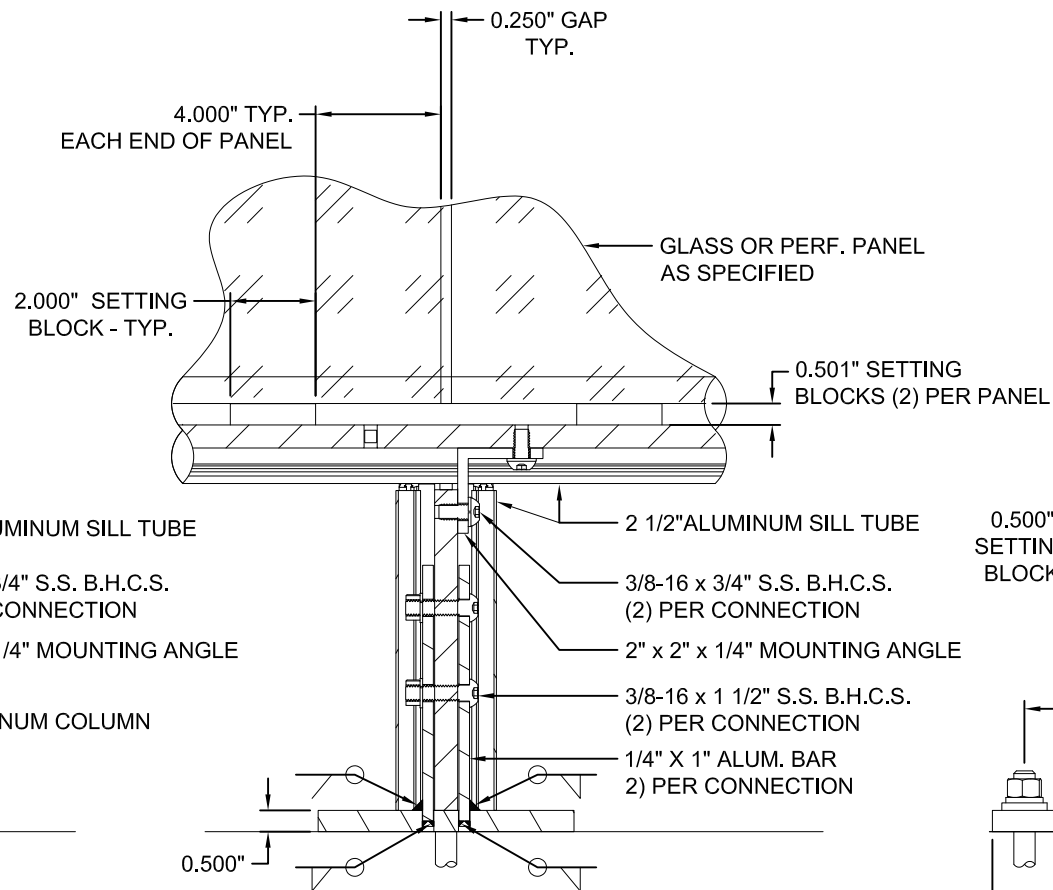
THIS DRAWING IS CONFIDENTIAL AND IS FOR THE SOLE USE OF OUR CUSTOMERS AND MAY NOT BE REPRODUCED OR COPIED WITHOUT WRITTEN PERMISSION FROM BRASCO INTERNATIONAL.  
**LEAD TIME BEGINS UPON RECEIPT OF SIGNED APPROVAL.**

SIGNED: \_\_\_\_\_ DATE: \_\_\_\_\_

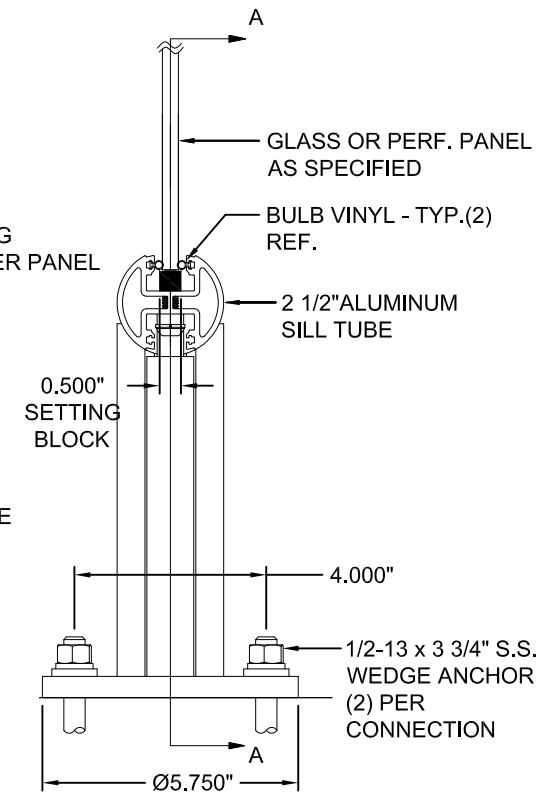
|           |                   |           |      |
|-----------|-------------------|-----------|------|
| CUSTOMER: |                   | ENGINEER: | HAUS |
| DETAIL:   | SHELTER ANCHORING | DATE:     |      |
| MODEL:    | ECLIPSE SERIES    | JOB #     | 6899 |
|           |                   | SHEET #:  | 002  |



**VIEW AT COLUMN CONNECTION**



**FRONT VIEW AT SILL SUPPORT**



**SIDE VIEW AT SILL SUPPORT**

**BRASCO INTERNATIONAL, INC.**

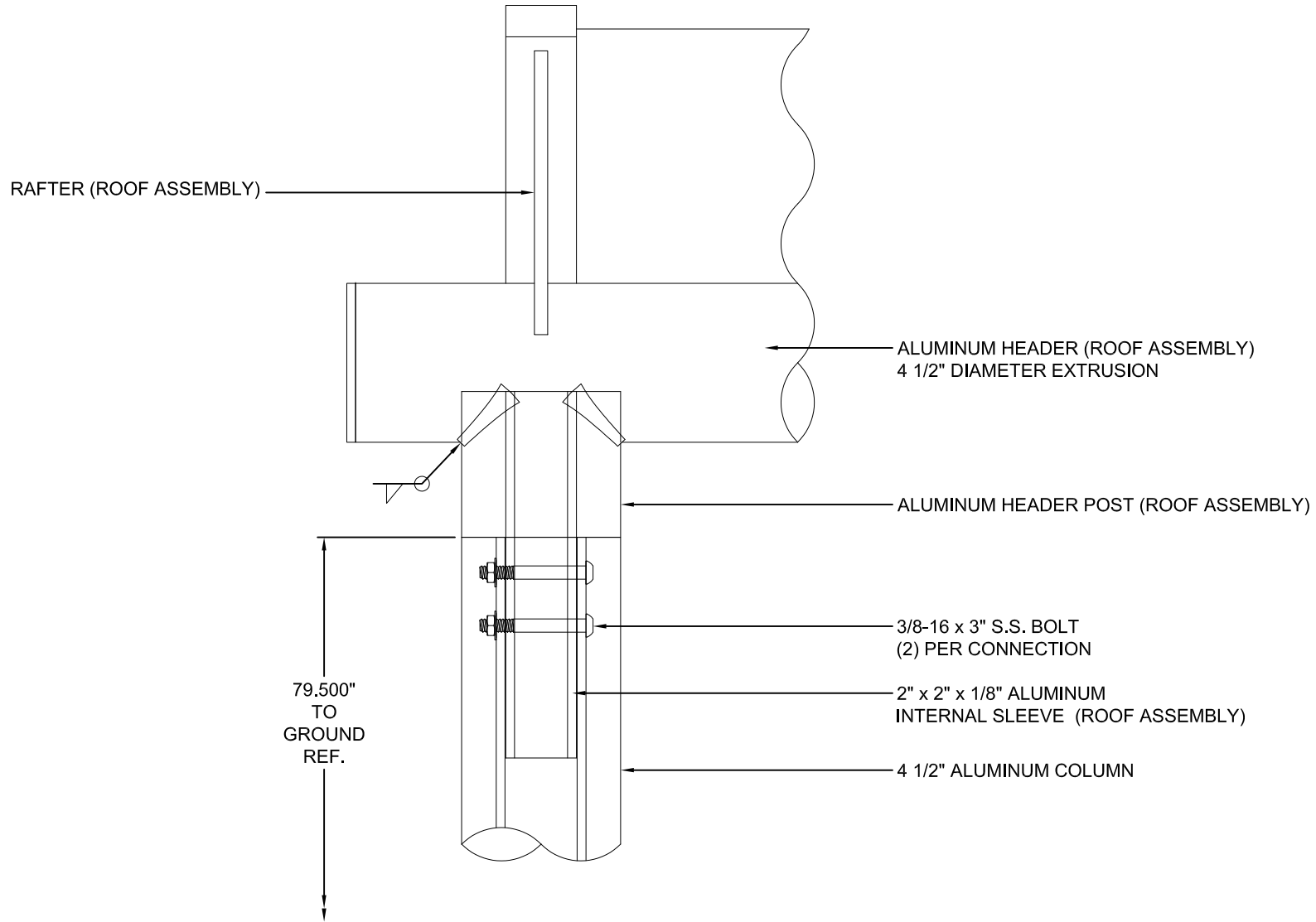
32400 INDUSTRIAL DRIVE  
 MADISON HEIGHTS, MI 48071  
 1-800-893-3665 WWW.BRASCO.COM

THIS DRAWING IS CONFIDENTIAL AND IS FOR THE SOLE USE OF OUR CUSTOMERS AND MAY NOT BE REPRODUCED OR COPIED WITHOUT WRITTEN PERMISSION FROM BRASCO INTERNATIONAL.  
**LEAD TIME BEGINS UPON RECEIPT OF SIGNED APPROVAL.**

SIGNED: \_\_\_\_\_ DATE: \_\_\_\_\_

|           |                                 |           |       |
|-----------|---------------------------------|-----------|-------|
| CUSTOMER: |                                 | ENGINEER: | HAUS  |
| DETAIL:   | SILL ATTACHMENT AND CONNECTIONS |           | DATE: |
| MODEL:    | ECLIPSE SERIES                  | JOB #     | 6899  |
|           |                                 | SHEET #:  | 003   |

**NOTE: ROOF ARRIVES FULLY ASSEMBLED**



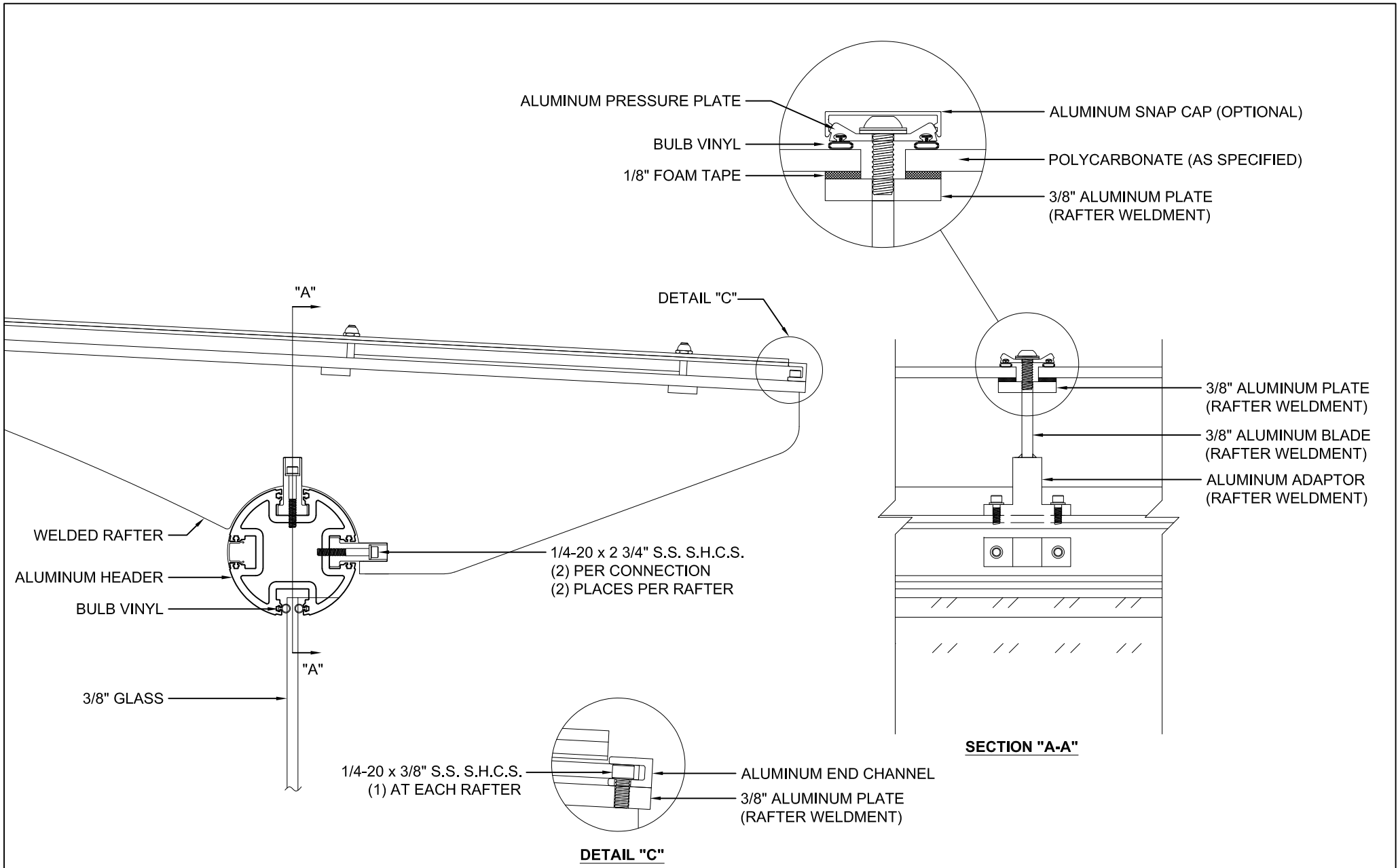
**BRASCO INTERNATIONAL, INC.**

32400 INDUSTRIAL DRIVE  
MADISON HEIGHTS, MI 48071  
1-800-893-3665 WWW.BRASCO.COM

THIS DRAWING IS CONFIDENTIAL AND IS FOR THE SOLE USE OF OUR CUSTOMERS AND MAY NOT BE REPRODUCED OR COPIED WITHOUT WRITTEN PERMISSION FROM BRASCO INTERNATIONAL.  
**LEAD TIME BEGINS UPON RECEIPT OF SIGNED APPROVAL.**

SIGNED: \_\_\_\_\_ DATE: \_\_\_\_\_

|           |                             |           |       |
|-----------|-----------------------------|-----------|-------|
| CUSTOMER: |                             | ENGINEER: | HAUS  |
| DETAIL:   | HEADER ATTACHMENT TO COLUMN |           | DATE: |
| MODEL:    | ECLIPSE SERIES              | JOB #     | 6899  |
|           |                             | SHEET #:  | 004   |



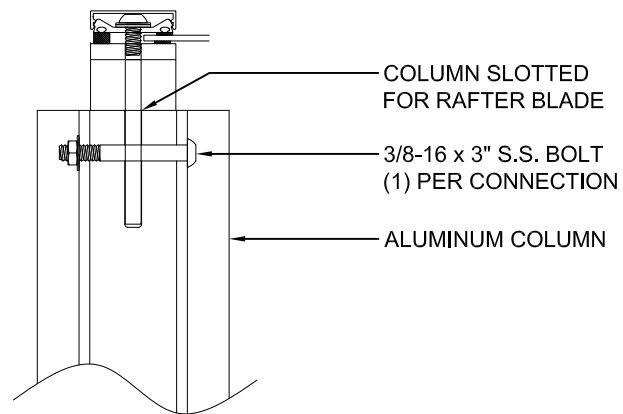
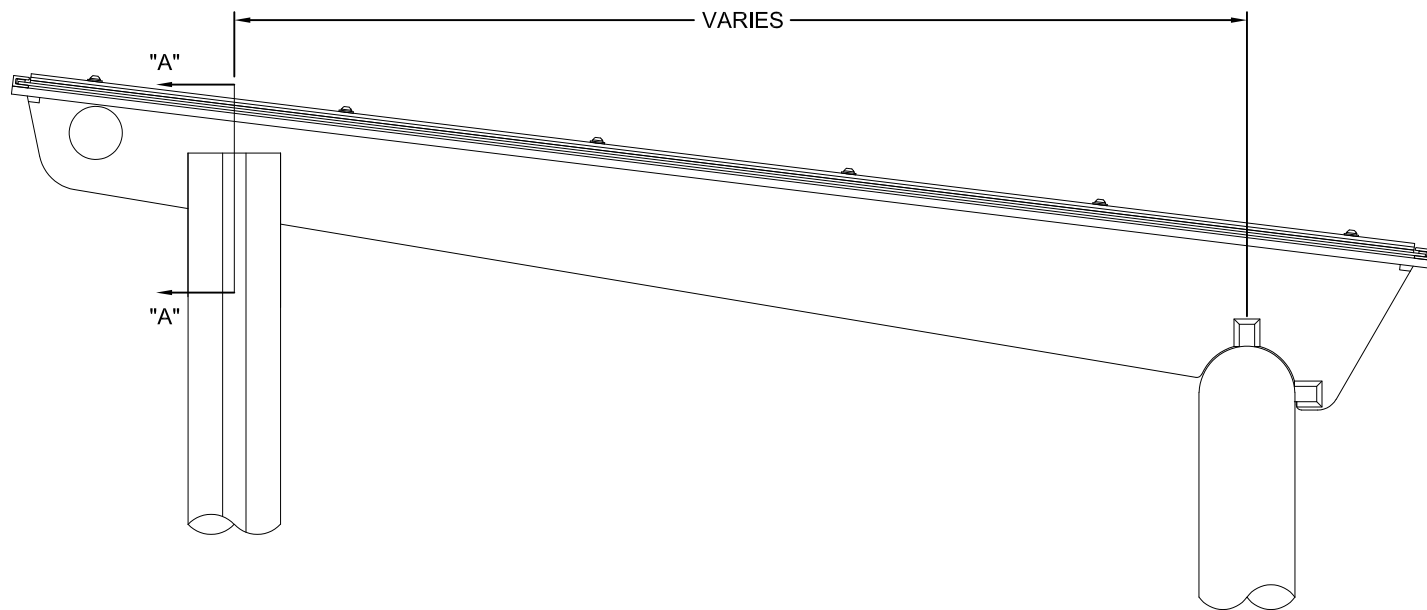
**BRASCO INTERNATIONAL, INC.**

32400 INDUSTRIAL DRIVE  
 MADISON HEIGHTS, MI 48071  
 1-800-893-3665 WWW.BRASCO.COM

THIS DRAWING IS CONFIDENTIAL AND IS FOR THE SOLE USE OF OUR CUSTOMERS AND MAY NOT BE REPRODUCED OR COPIED WITHOUT WRITTEN PERMISSION FROM BRASCO INTERNATIONAL.  
**LEAD TIME BEGINS UPON RECEIPT OF SIGNED APPROVAL.**

SIGNED: \_\_\_\_\_ DATE: \_\_\_\_\_

|           |                             |           |       |
|-----------|-----------------------------|-----------|-------|
| CUSTOMER: |                             | ENGINEER: | HAUS  |
| DETAIL:   | RAFTER AND ROOF ATTACHMENTS |           | DATE: |
| MODEL:    | ECLIPSE SERIES              | JOB #     | 6899  |
|           |                             | SHEET #:  | 005   |



**SECTION "A-A"**

**BRASCO INTERNATIONAL, INC.**

32400 INDUSTRIAL DRIVE  
 MADISON HEIGHTS, MI 48071  
 1-800-893-3665 WWW.BRASCO.COM

THIS DRAWING IS CONFIDENTIAL AND IS FOR THE SOLE USE OF OUR CUSTOMERS AND MAY NOT BE REPRODUCED OR COPIED WITHOUT WRITTEN PERMISSION FROM BRASCO INTERNATIONAL.  
**LEAD TIME BEGINS UPON RECEIPT OF SIGNED APPROVAL.**

SIGNED: \_\_\_\_\_ DATE: \_\_\_\_\_

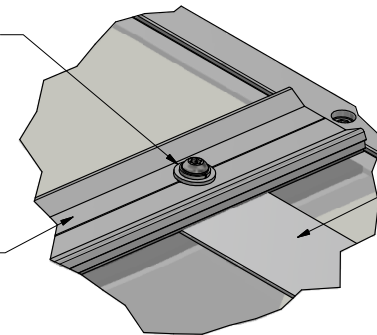
|           |                                 |           |       |
|-----------|---------------------------------|-----------|-------|
| CUSTOMER: |                                 | ENGINEER: | HAUS  |
| DETAIL:   | FRONT COLUMN TO ROOF ATTACHMENT |           | DATE: |
| MODEL:    | ECLIPSE SERIES                  | JOB #     | 6899  |
|           |                                 | SHEET #:  | 006   |

SOLAR PANEL ATTACHMENT

1/4-20 x 1" S.S. B.H.C.S. WITH  
WASHER & LOCK WASHER - TYP.

GASKETED PRESSURE CAP

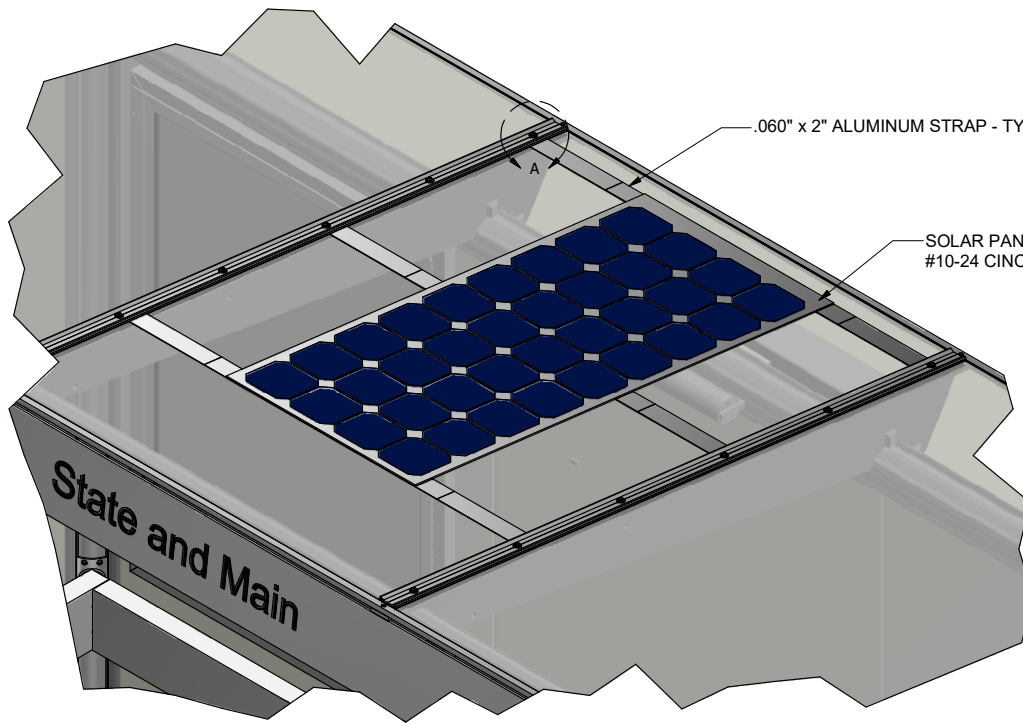
STRAPS SECURED  
UNDERNEATH PRESSURE CAPS



**DETAIL A**

.060" x 2" ALUMINUM STRAP - TYP.(3)

SOLAR PANEL SECURED TO STRAPS WITH  
#10-24 CINCH STUDS AND LOCK NUTS - (6) PLACES

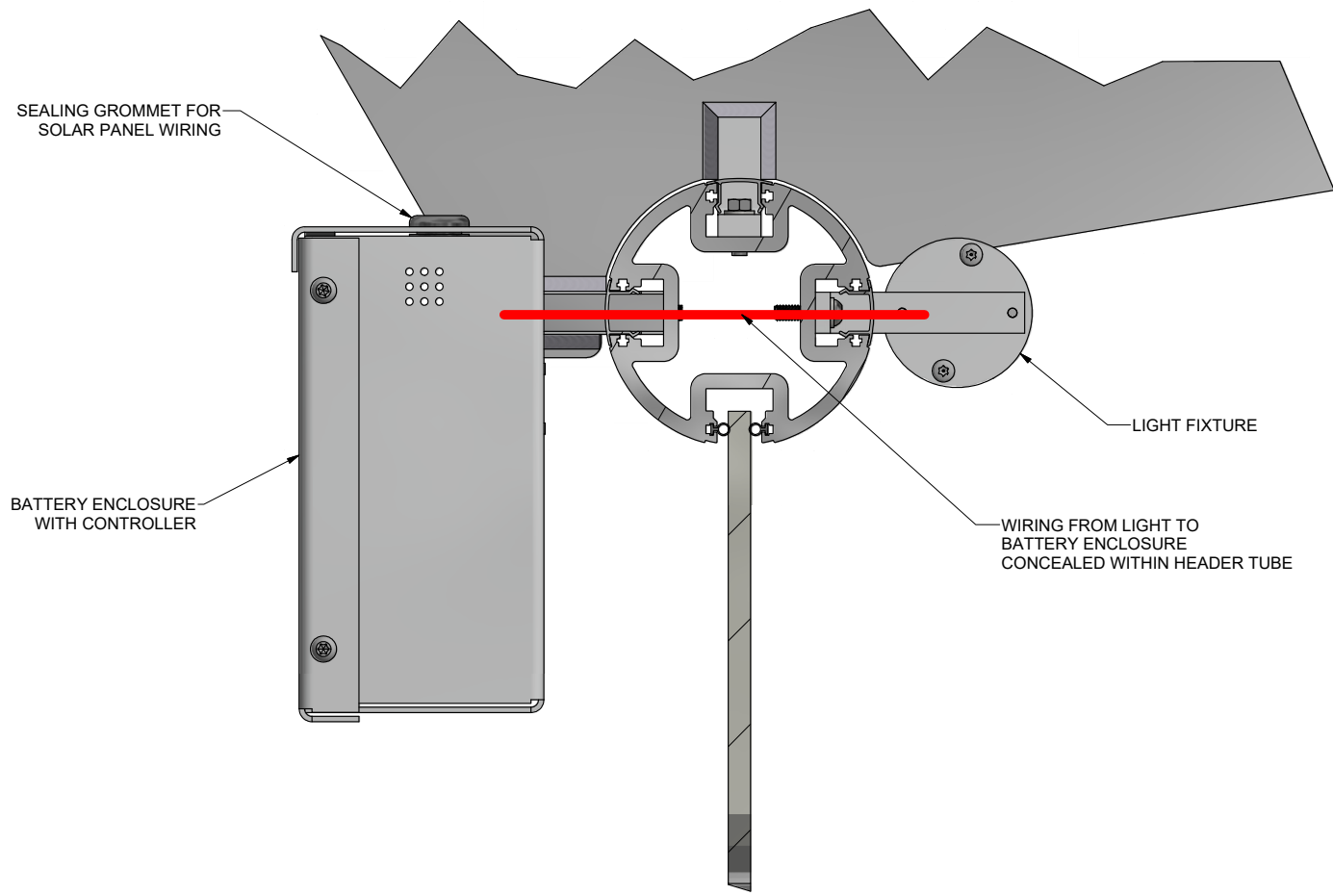


BRASCO INTERNATIONAL, INC.  
32400 INDUSTRIAL DR.  
MADISON HEIGHTS, MICHIGAN 48071  
1-800-893-3665 WWW.BRASCO.COM

THIS DRAWING IS CONFIDENTIAL AND IS FOR THE SOLE USE OF  
OUR CUSTOMERS AND MAY NOT BE REPRODUCED OR COPIED  
WITHOUT WRITTEN PERMISSION FROM BRASCO INTERNATIONAL.

|           |                        |           |      |          |     |
|-----------|------------------------|-----------|------|----------|-----|
| CUSTOMER: | CITY OF ALEXANDRIA     | DESIGNER: | HAUS | CHECKER: | BDH |
| PROJECT:  | ECLIPSE STYLE SHELTER  | DATE:     |      | DATE:    |     |
| MODEL:    | SOLAR PANEL ATTACHMENT | JOB #     | 6899 | SHEET:   | 007 |
|           |                        | REVISION: |      |          | A   |

BATTERY ENCLOSURE AND LIGHT DETAIL



BRASCO INTERNATIONAL, INC.  
 32400 INDUSTRIAL DR.  
 MADISON HEIGHTS, MICHIGAN 48071  
 1-800-893-3665 WWW.BRASCO.COM

THIS DRAWING IS CONFIDENTIAL AND IS FOR THE SOLE USE OF OUR CUSTOMERS AND MAY NOT BE REPRODUCED OR COPIED WITHOUT WRITTEN PERMISSION FROM BRASCO INTERNATIONAL.

|                                       |               |                   |                 |
|---------------------------------------|---------------|-------------------|-----------------|
| CUSTOMER:<br>CITY OF ALEXANDRIA       |               | DESIGNER:<br>HAUS | CHECKER:<br>BDH |
| PROJECT:<br>ECLIPSE STYLE SHELTER     |               | DATE:             | DATE:           |
| MODEL:<br>BATTERY ENCLOSURE AND LIGHT | JOB #<br>6899 | SHEET:<br>008     | REVISION:<br>A  |