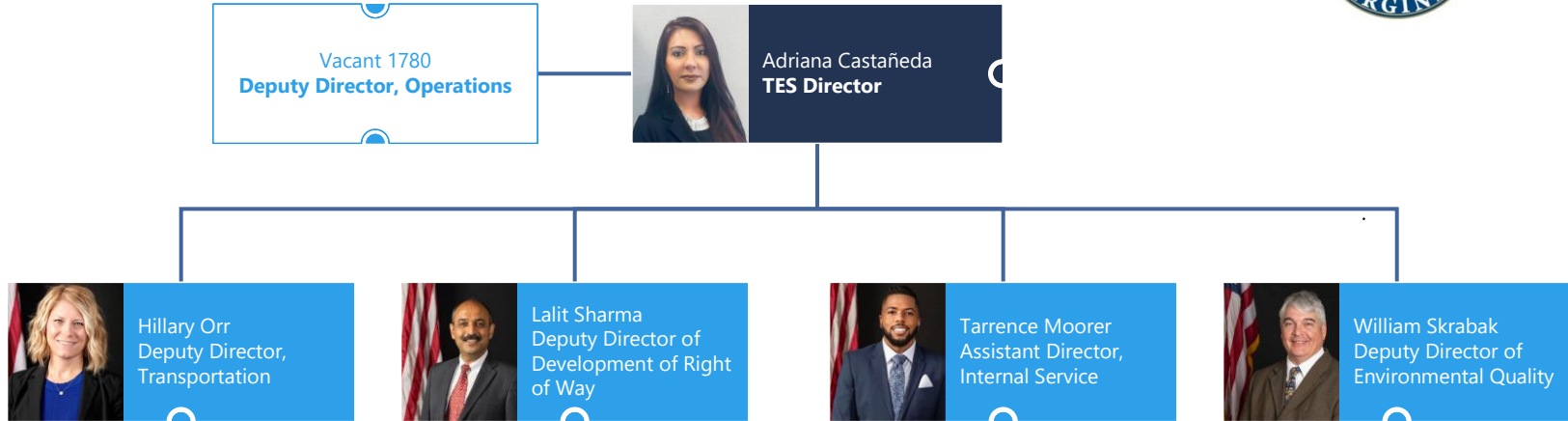


T&ES Senior Leadership



Key

- Director
- Deputy Director

Updated 02.08.24

Department of Transportation & Environmental Services

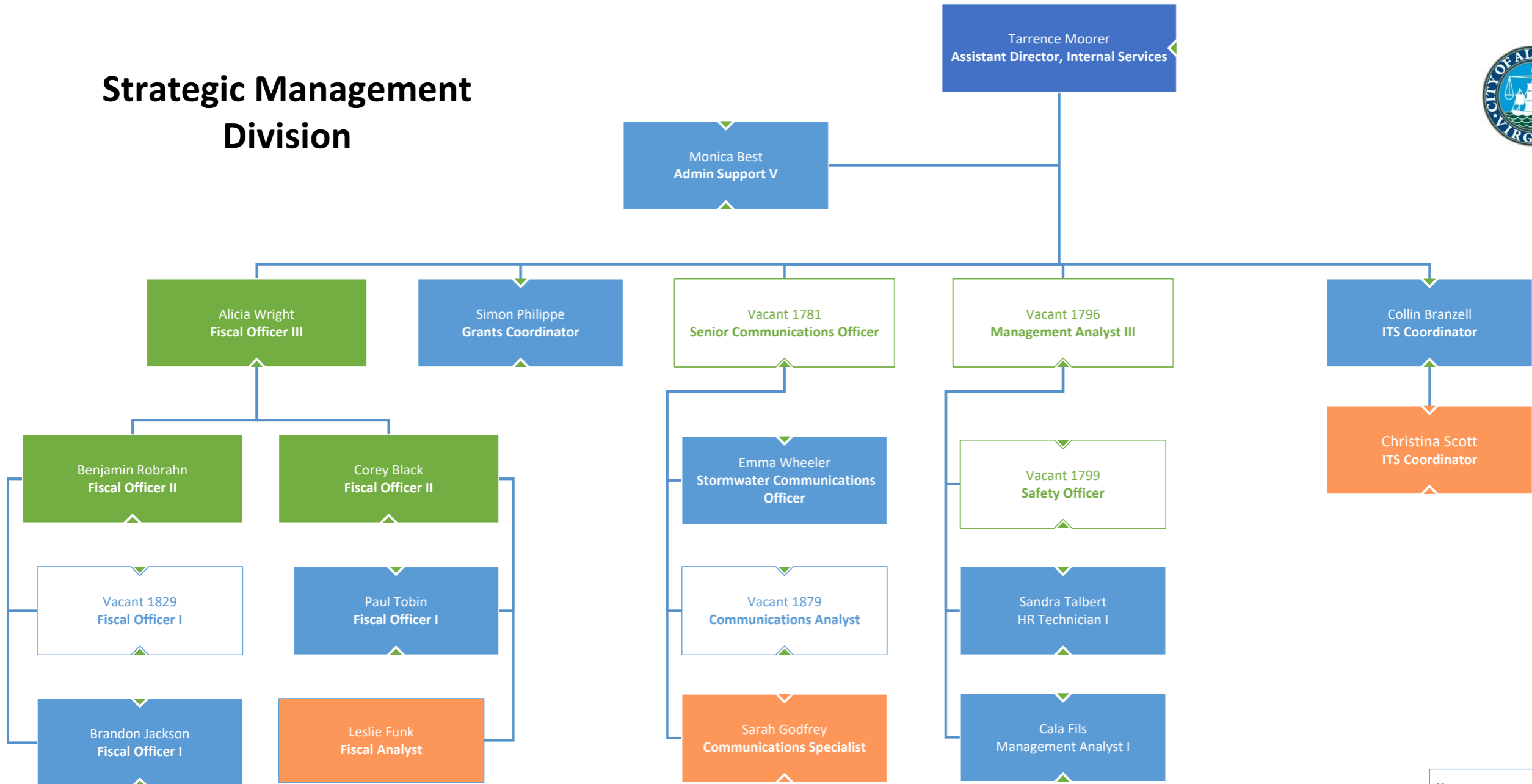


Key

- Deputy Director
- Division Chief
- Director

Updated 02.07.24

Strategic Management Division



Key

- Subordinate
- Manager
- Executive
- Contractor



Development of Right-of-Way Services Division

Lalit Sharma
Deputy Director, DROW

Sherry Clarke
Administrative Support V

Brian Dofflemyer
Division Chief, Land Development Services

Alex Boulden
Division Chief, Permits

Nathan Orr
Chief of Surveys

Randy Merritt
Inspector III

Vacant # 9150
Civil Engineer IV

Andre Williams
Civil Engineer III/Permits Manager

David Sharon
Civil Engineer IV/Development Review

Vacant 1761
Civil Engineer IV/Special Projects

Heather Locke
Instrument Operator

Emad Yassa
Inspector II

Keith Kehler
Inspector II

Kim Merritt
Civil Engineer I

Safina Singh
Civil Engineer III

Michael Mitiku
Civil Engineer III

Jennifer Gottselig
Land Survey Analyst

Joel McPherson
Inspector I

Lance Jolly
Inspector I

Tiffany Chau Vo
Engineering Aide II

Donna Ferguson
Engineering Aide II

Terry Colleen
Engineering Aide II

Vacant 1723
Survey Party Chief

Joseph Danquah
Inspector II

Danny Rivera
Inspector I

Bryan Din Lawrence
Engineering Aide I

TJ Kennedy
Land Survey Analyst

Vacant 1675
Inspector I

Kuaku Attoh
Inspector I

Marvi Sediq
Engineering Aide I

Vincent Williams
Right-of-Way Agent

Muhammad Irfan
Inspector II

Thomas Knighton
Inspector II

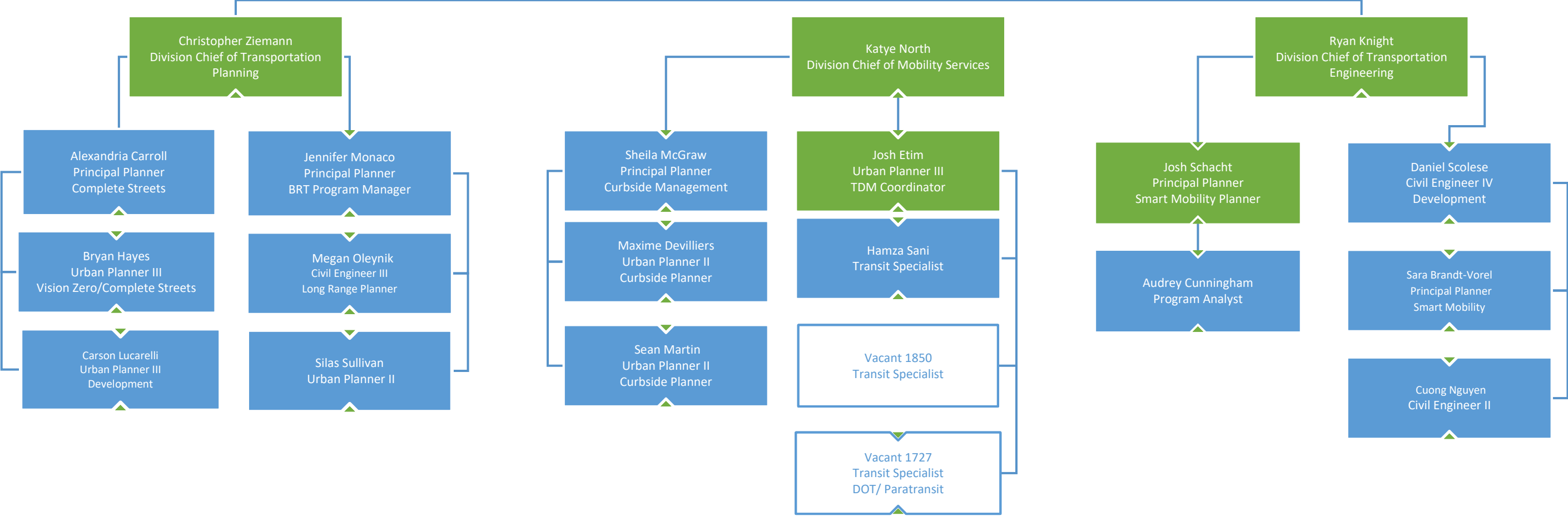
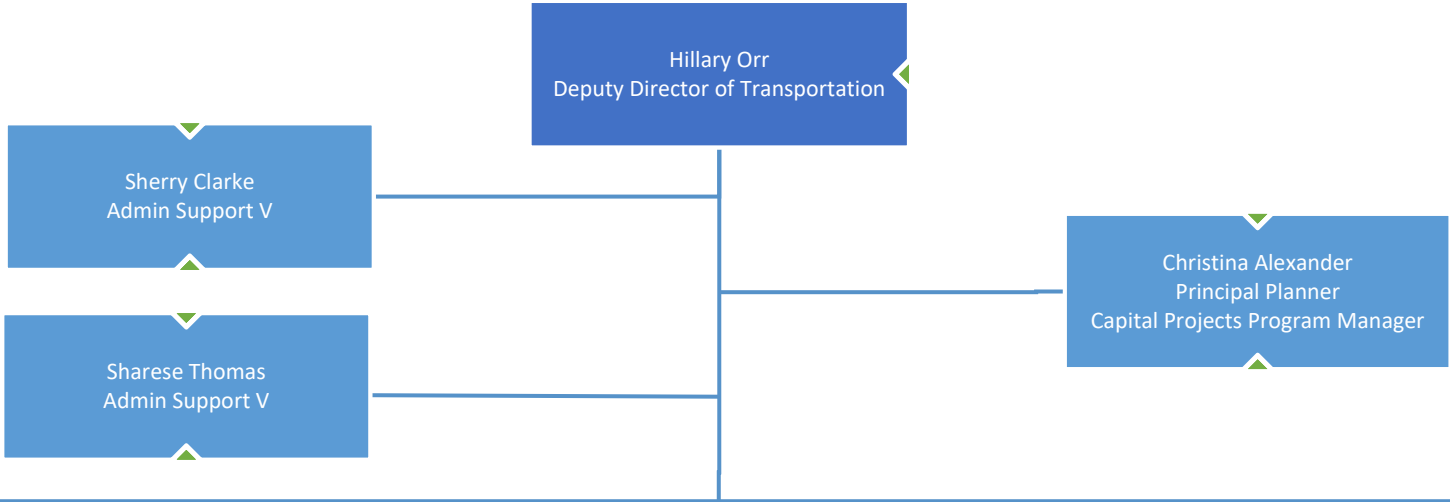
Penny Frazier
Engineering Aide II

William Flerlage
Survey Party Chief

Anna Turnage
Engineering Aide



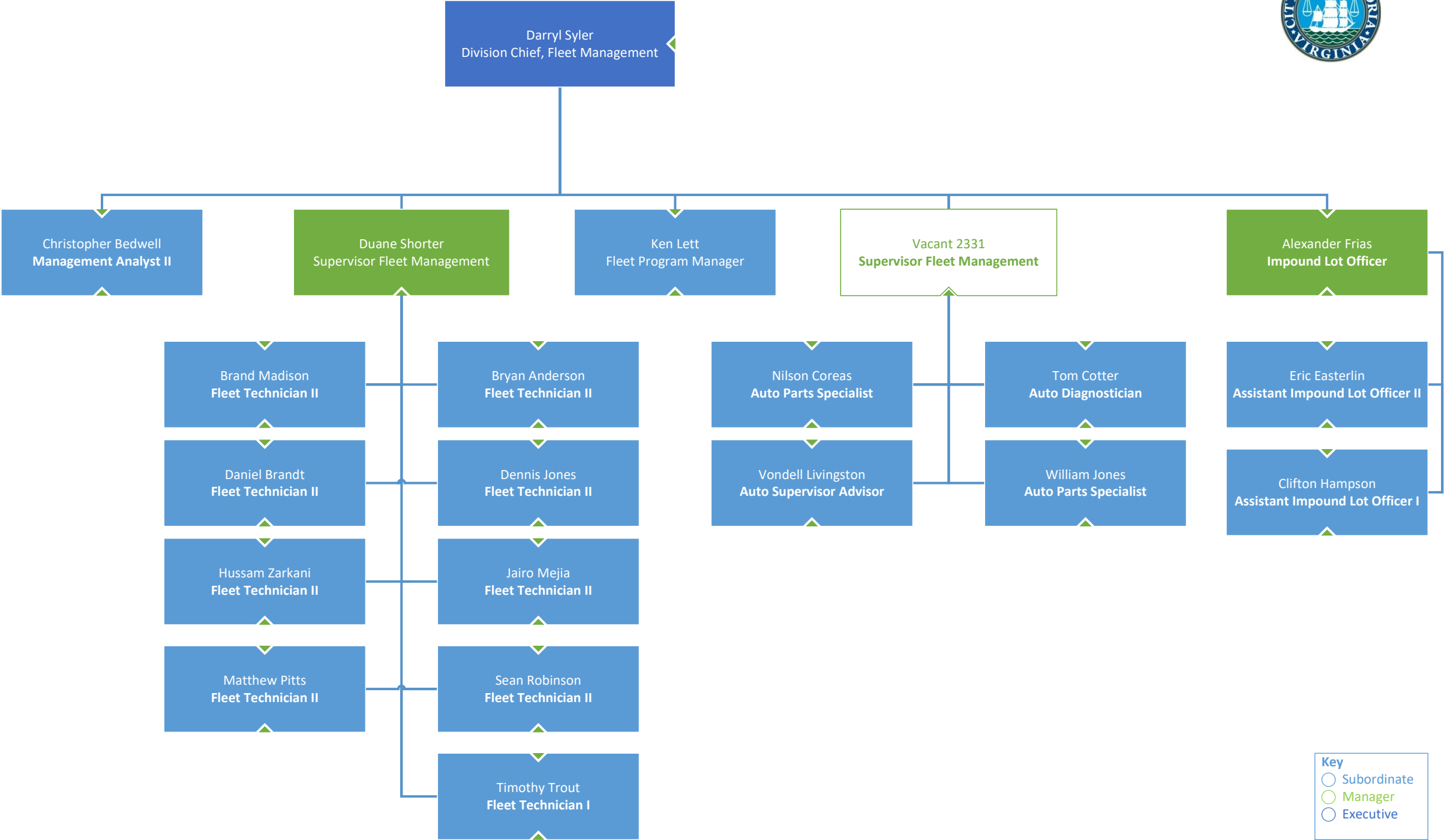
Transportation Branch



Key

- Subordinate
- Manager
- Executive

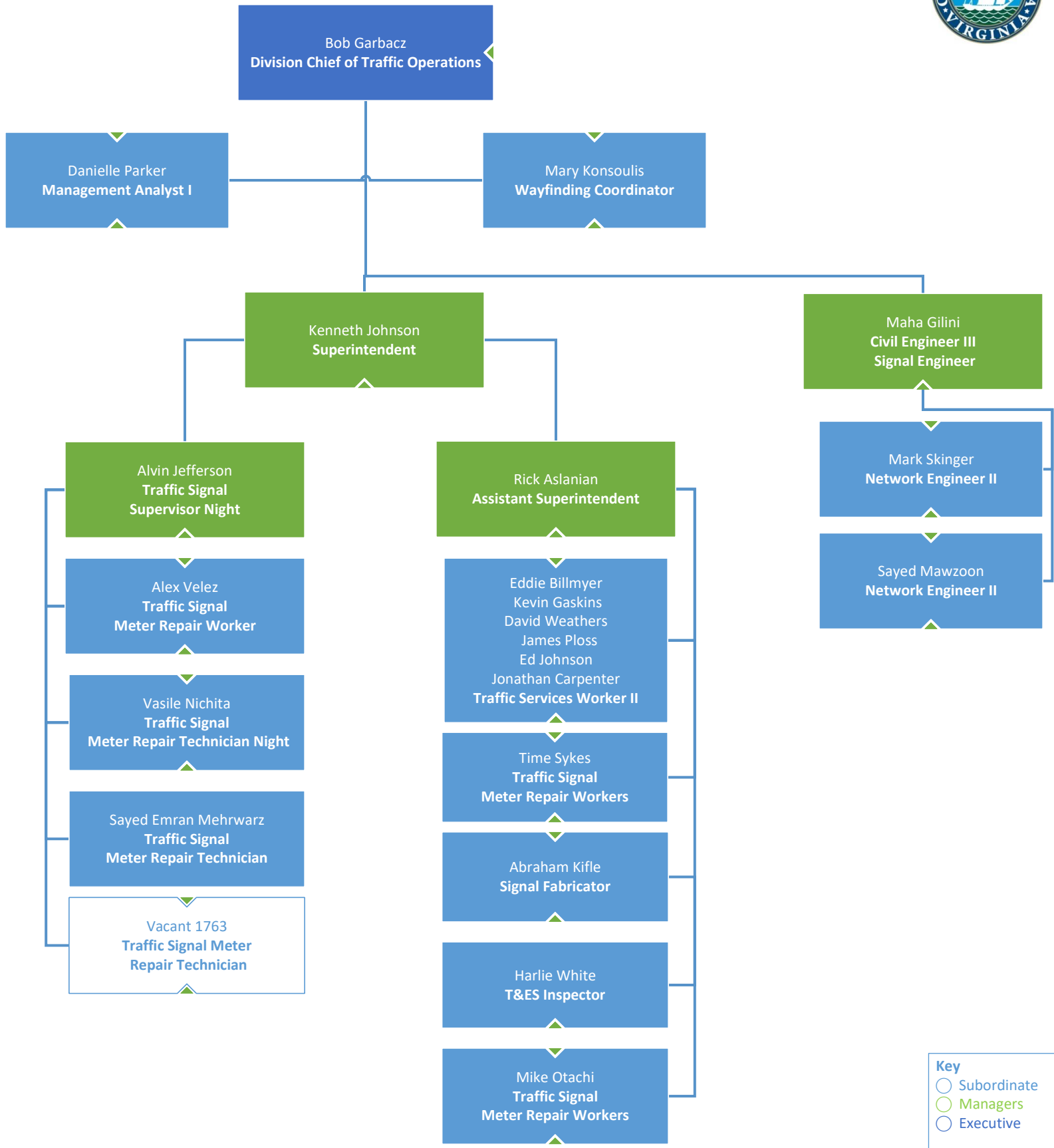
Fleet Management Division



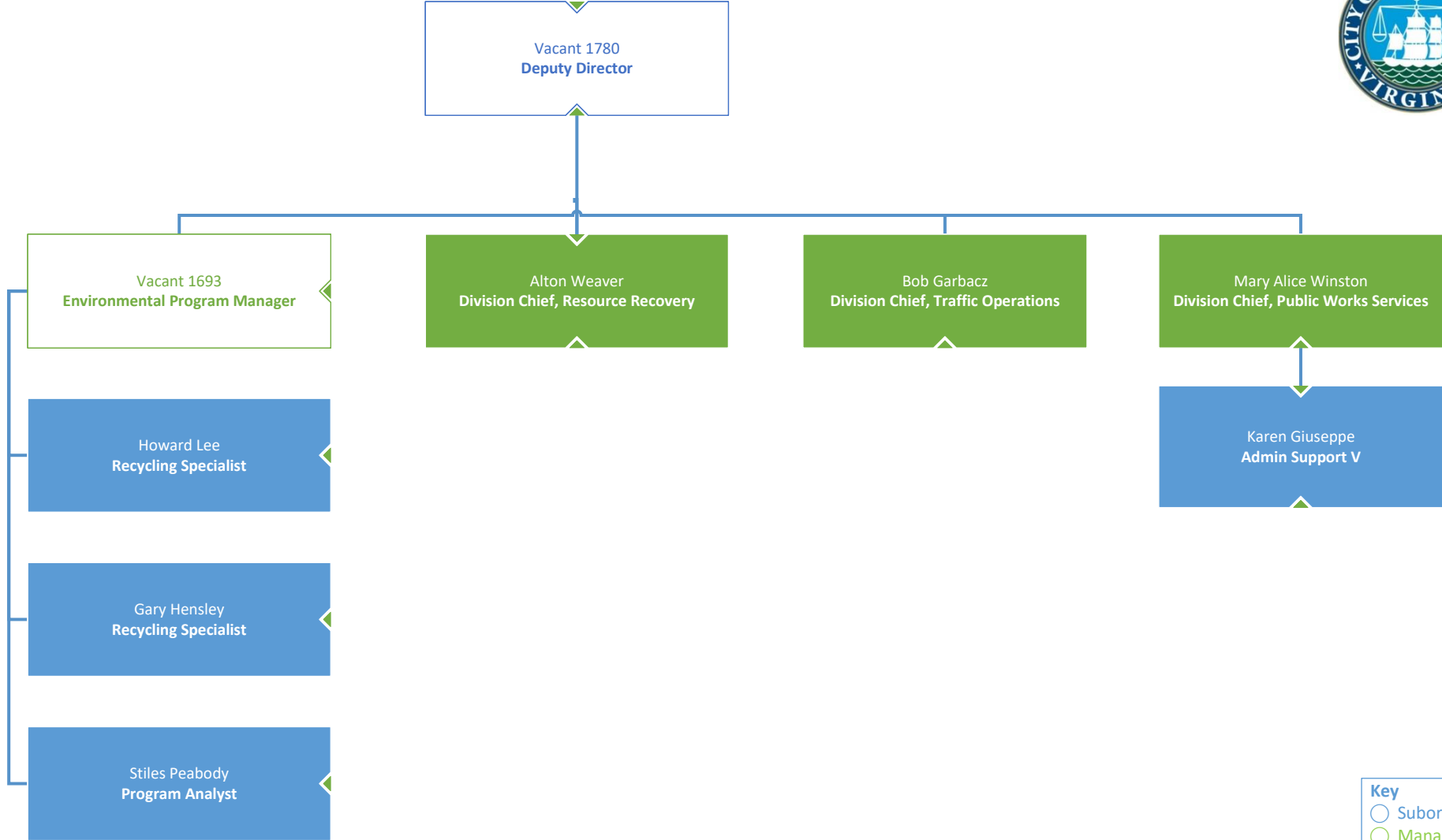
Key

- Subordinate
- Manager
- Executive

Traffic Operations Division



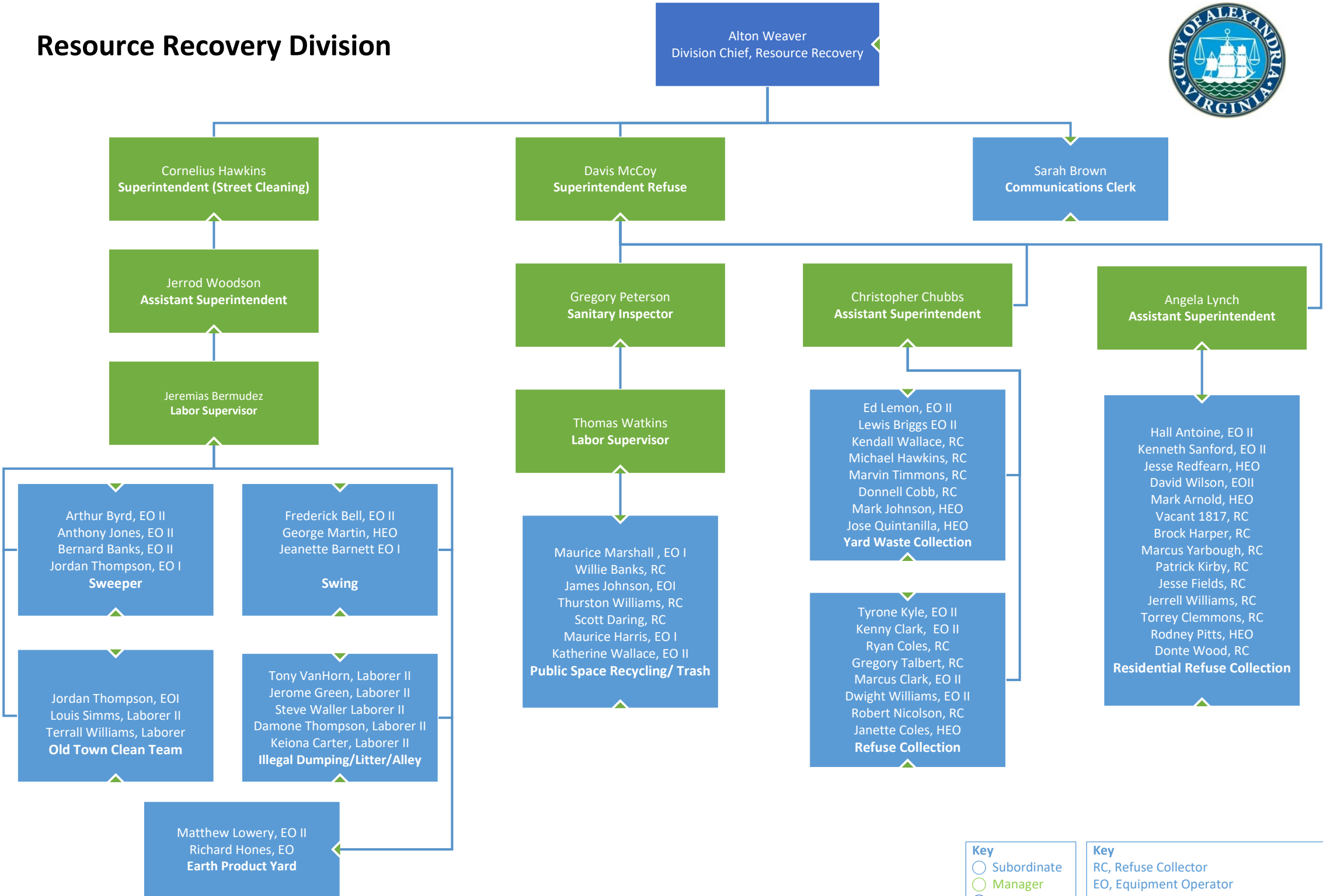
Operations Branch



Key

- Subordinate
- Manager
- Executive

Resource Recovery Division

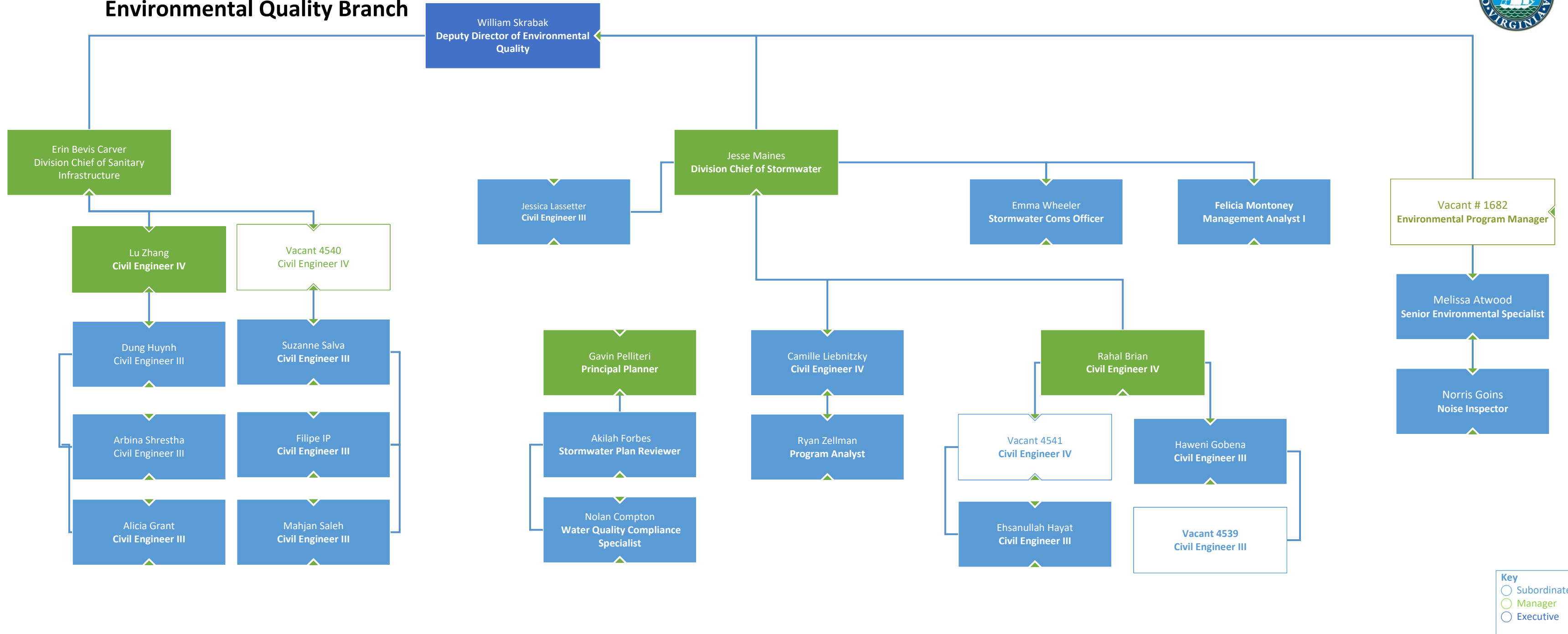


Updated 08.31.23

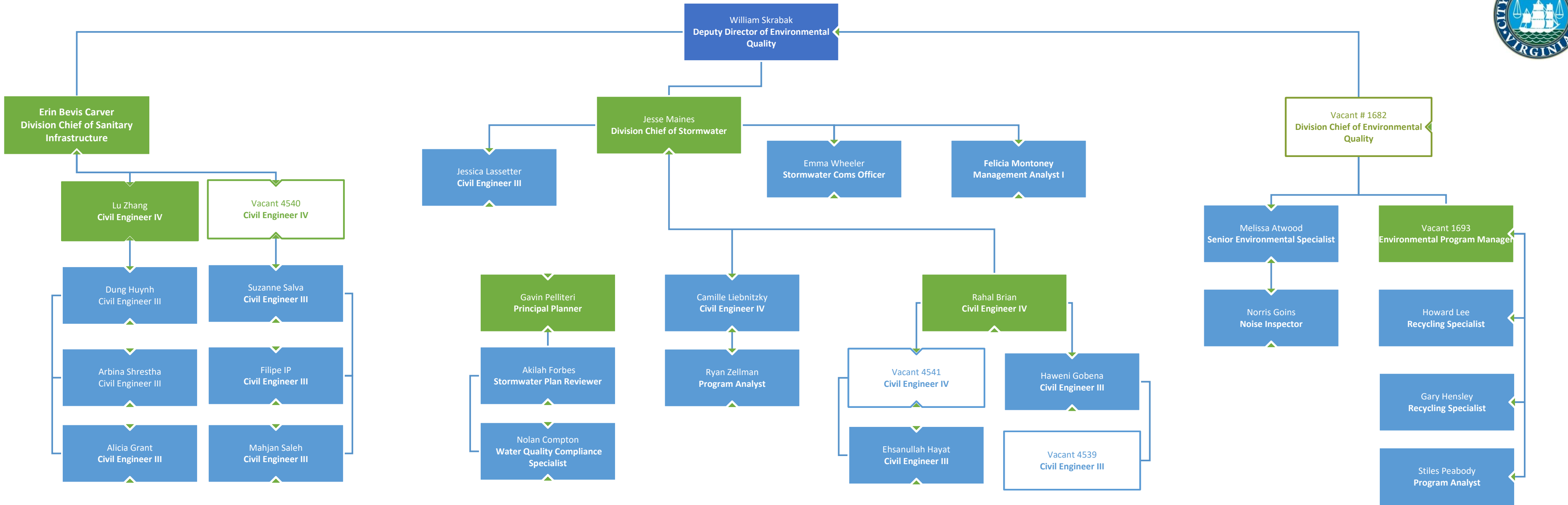
<p>Key</p> <ul style="list-style-type: none"> ○ Subordinate ○ Manager ○ Executive 	<p>Key</p> <ul style="list-style-type: none"> RC, Refuse Collector EO, Equipment Operator HEO, Heavy Equipment Operator MVO, Motor Vehicle Operator
---	--



Infrastructure & Environmental Quality Branch



Infrastructure & Environmental Quality Branch



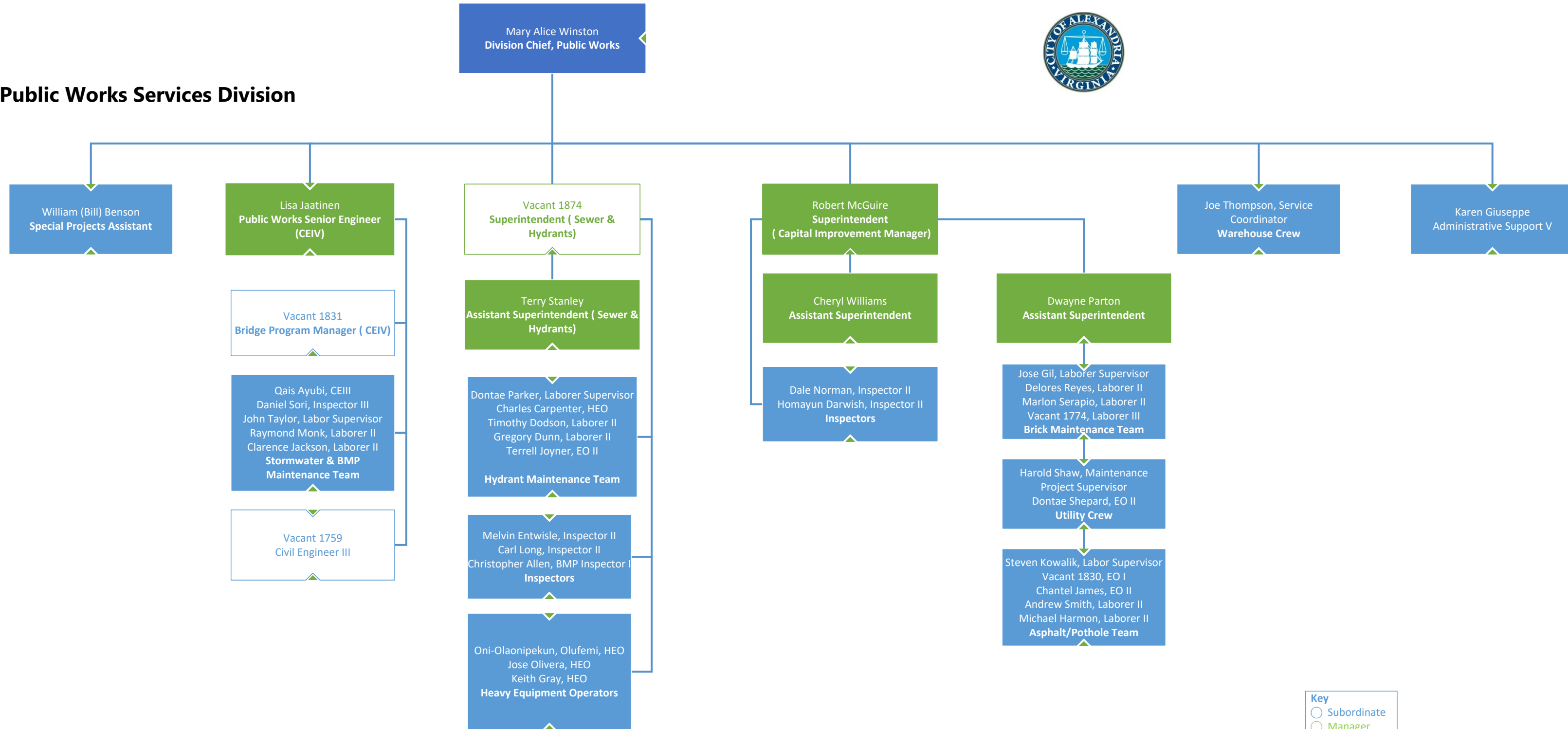
Updated 01/31/2024

Key

- Subordinate
- Manager
- Executive



Public Works Services Division



Key
 ○ Subordinate
 ○ Manager
 ○ Executive