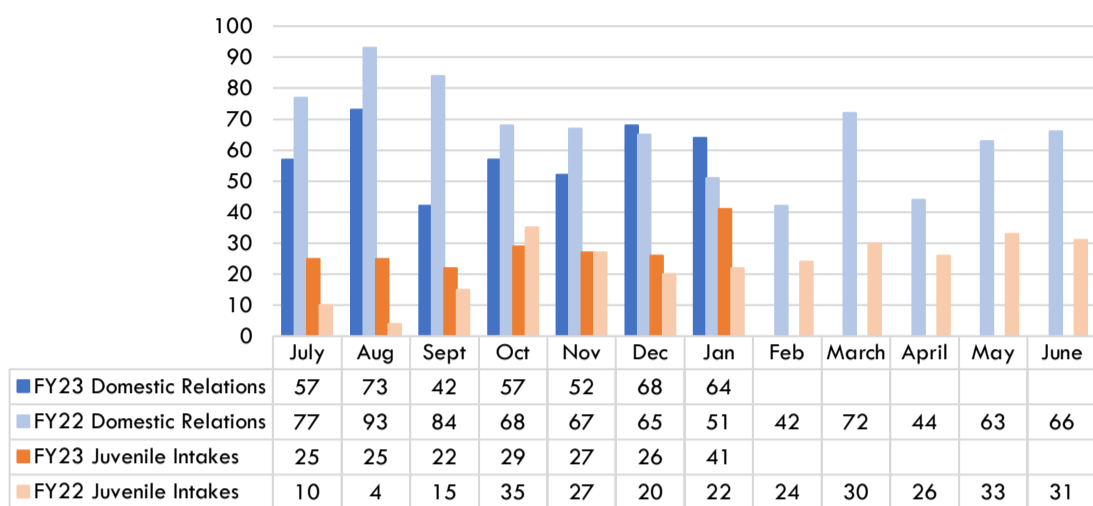
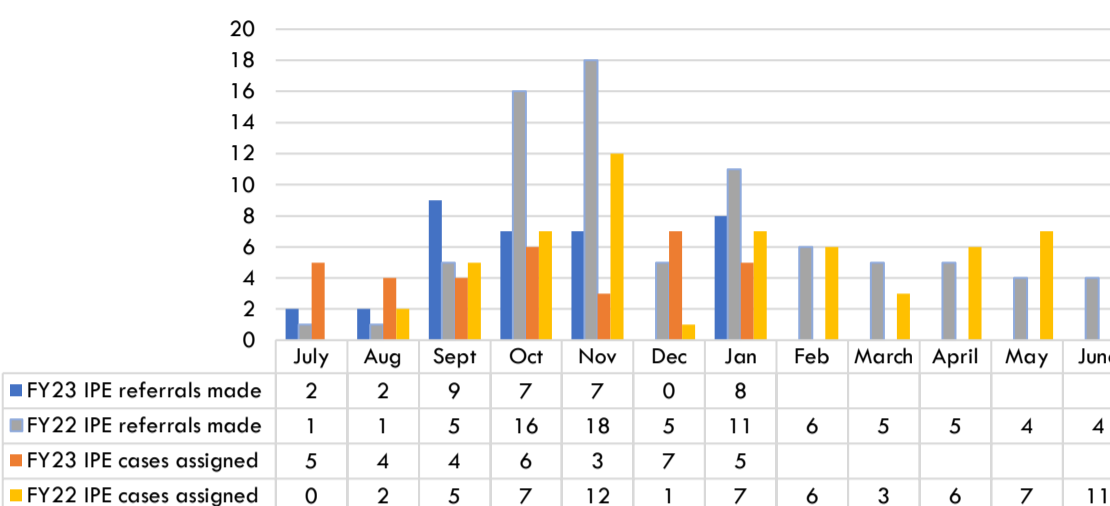


# Court Service Unit

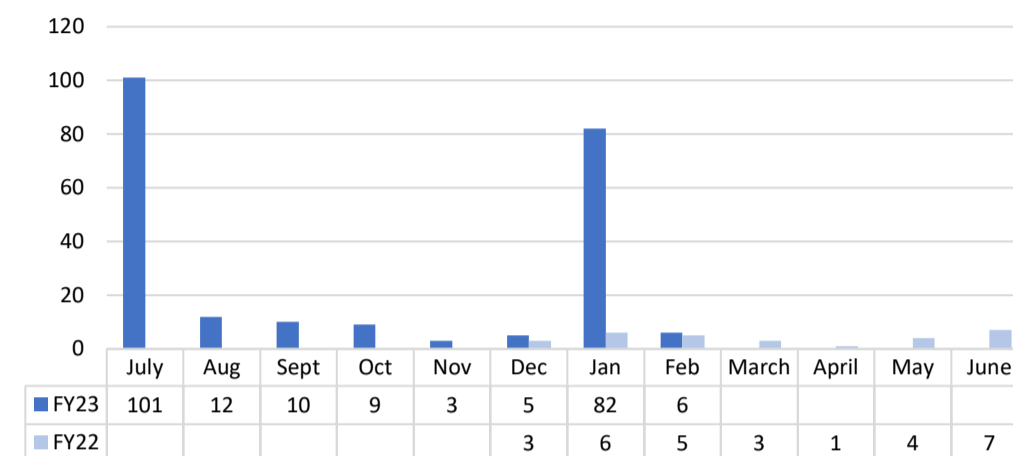
**Intakes**



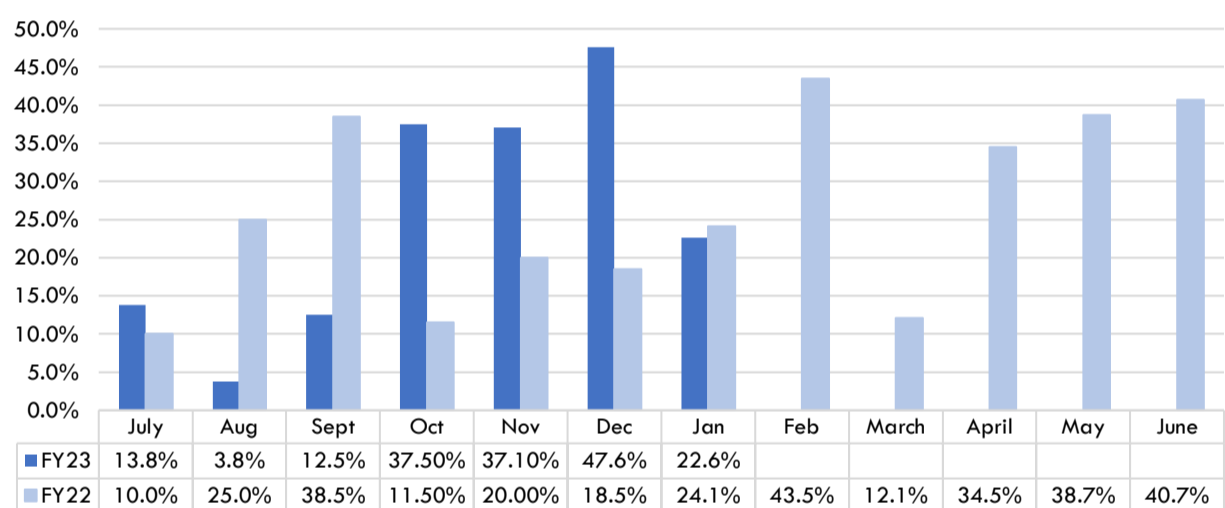
**Intervention, Prevention, and Education (IPE) Program**



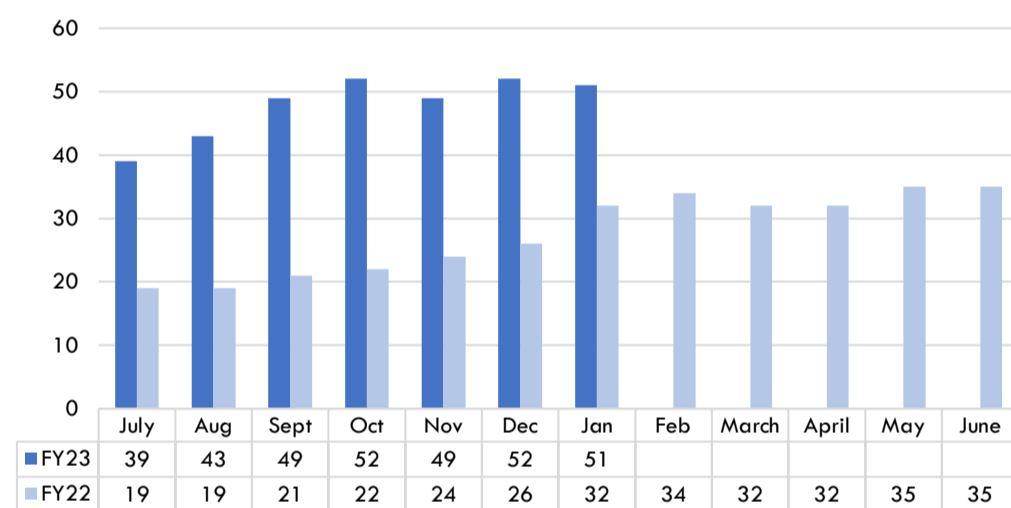
**# of Adults referred to become a mentor through the Alexandria Mentorship Partnership (AMP)**



**Intakes Diverted**



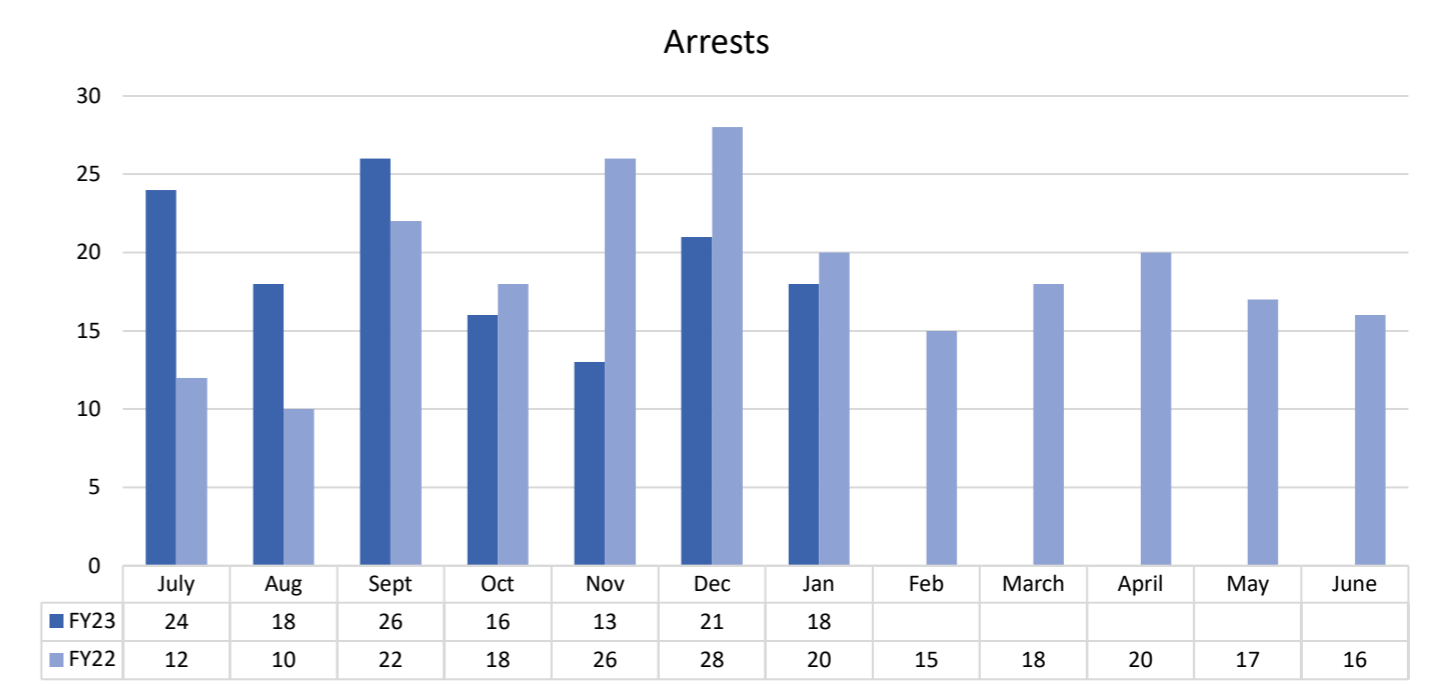
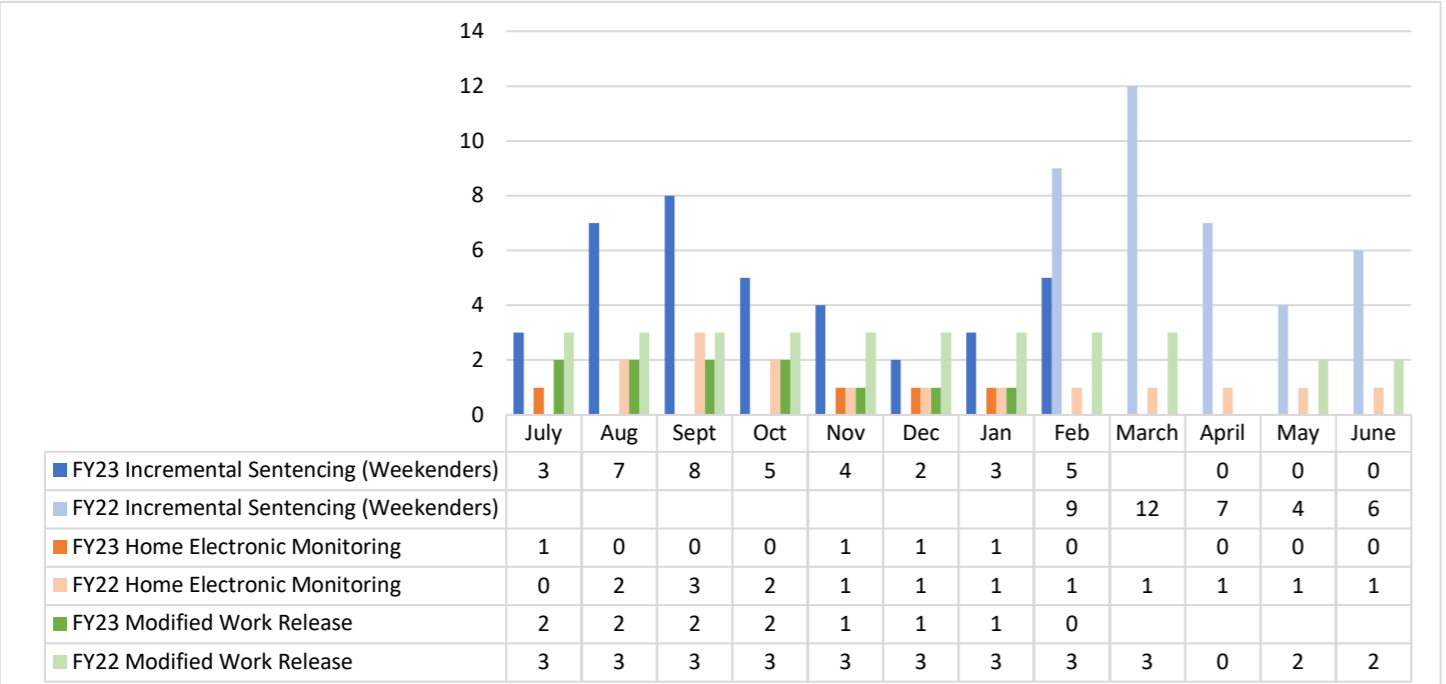
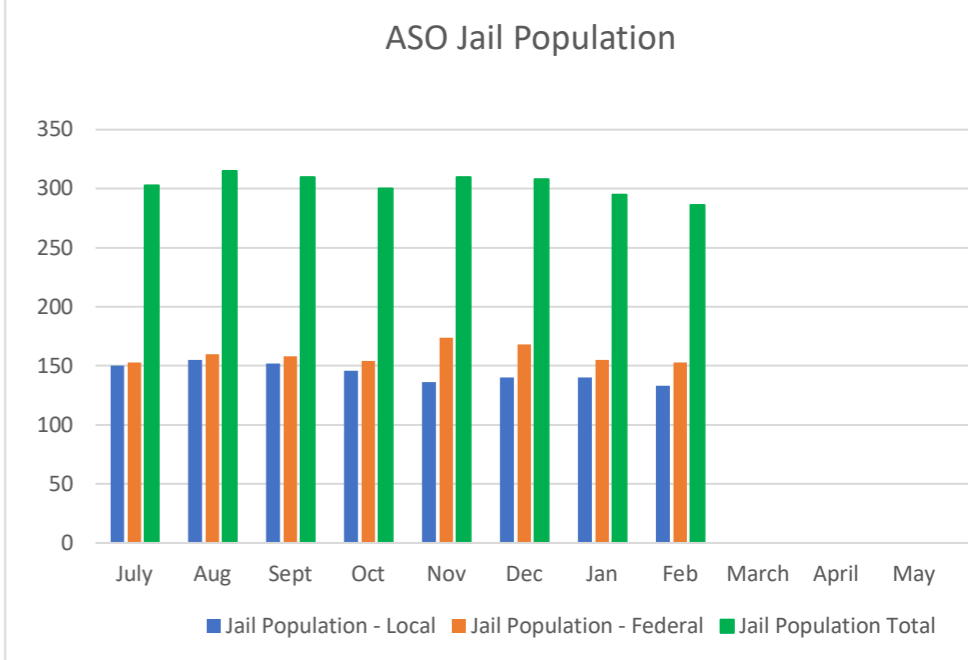
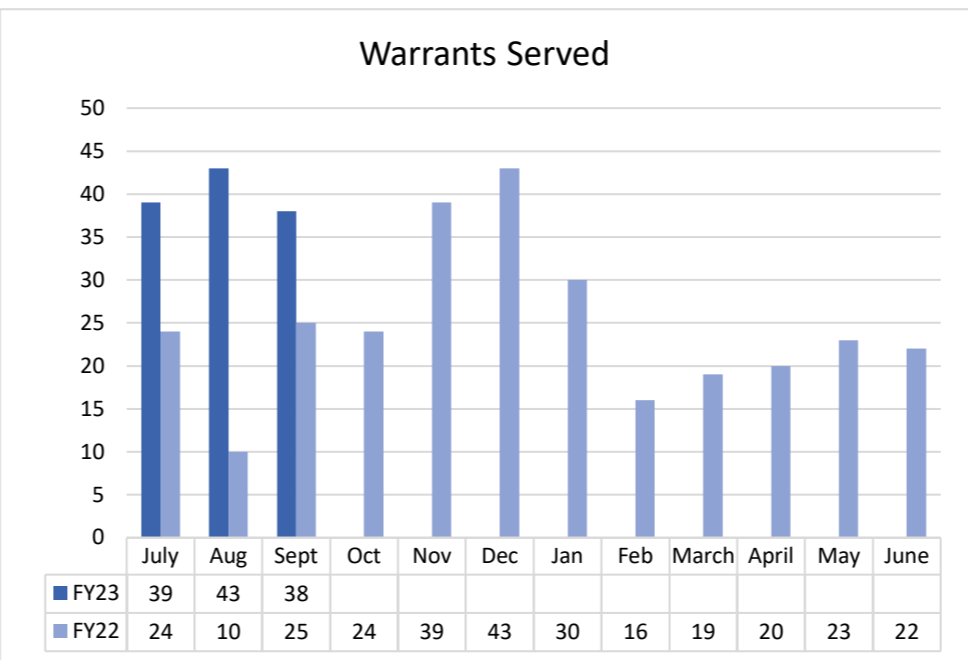
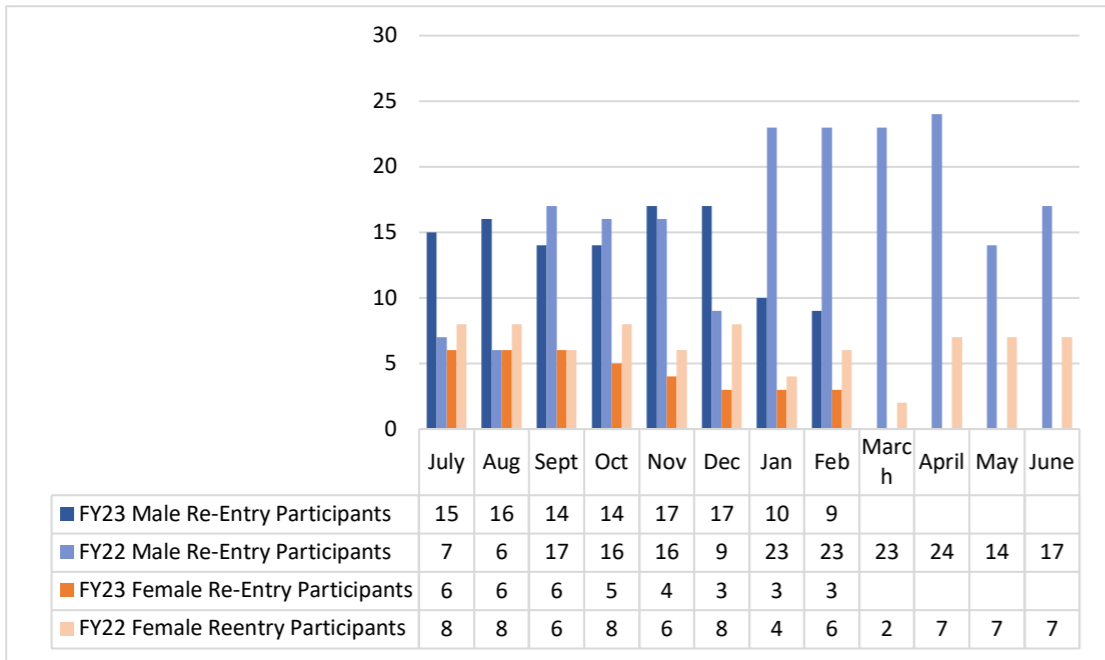
**Probation Average Daily Population**



**Notes/Comments:**

- While the Alexandria Mentorship Partnership (AMP) began in 2006, tracking of referrals began in December 2021. The July 2022 number reflects the high number of referrals made at the AMP outreach event and online survey.

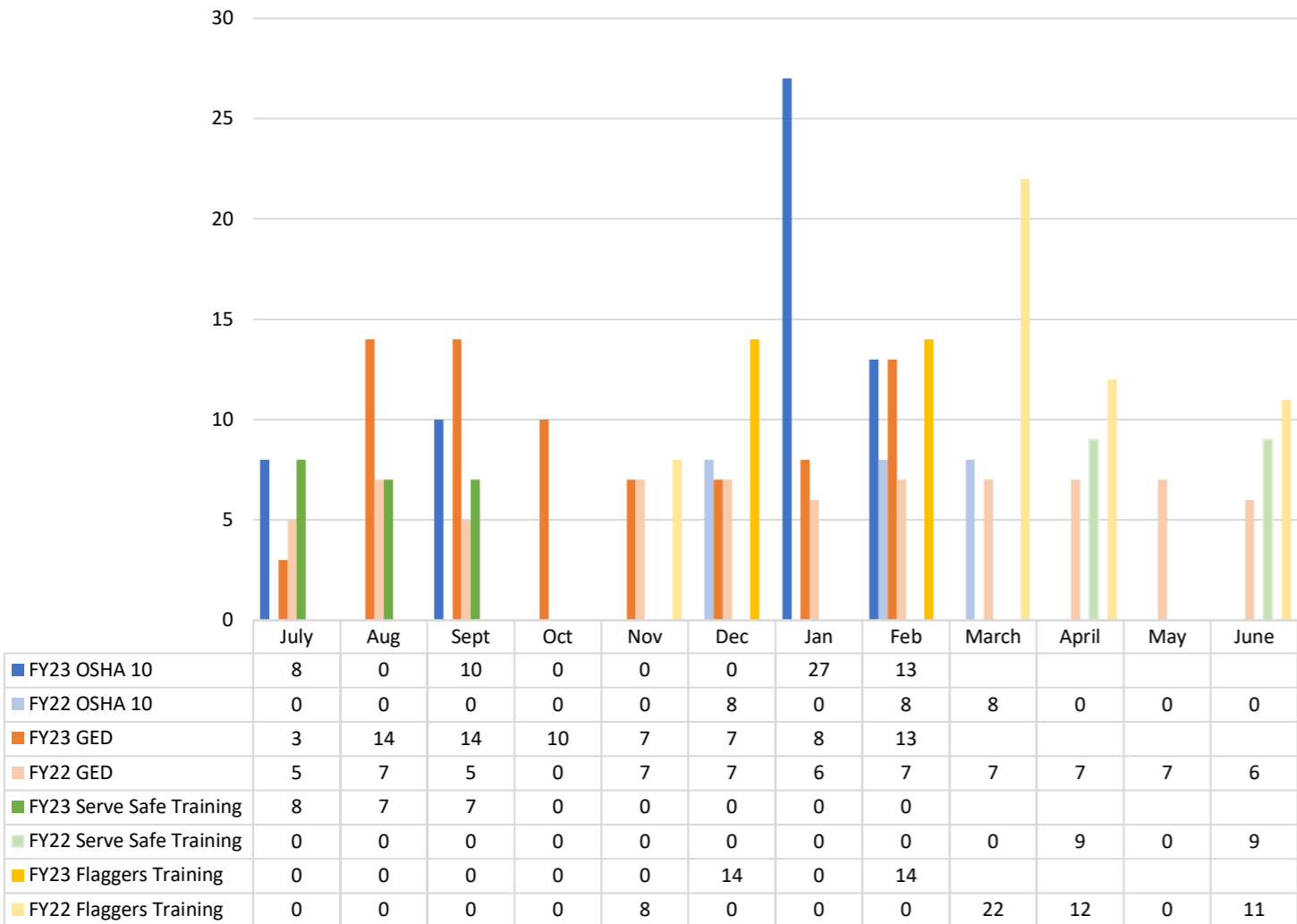
# Alexandria Sheriff's Office



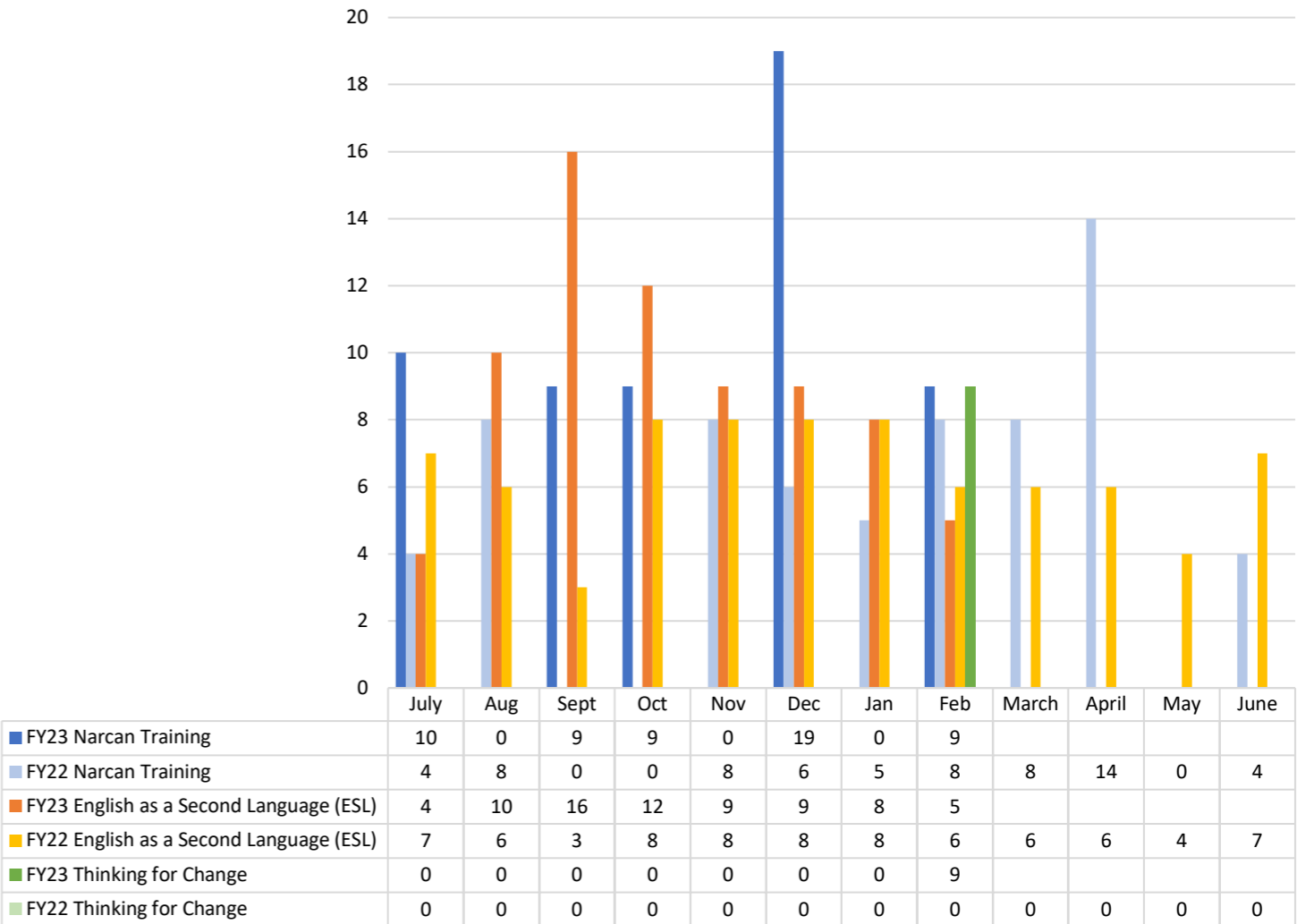
Notes/Comments: Incremental sentencing resumed in February; HEM data includes court ordered and hospital

# Alexandria Sheriff's Office, Program Participation

Participants in Programs



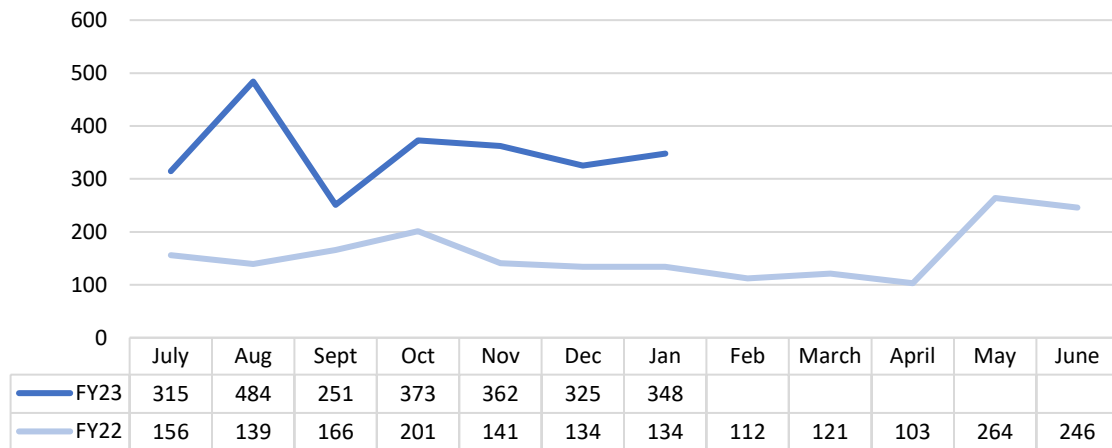
Participants in Programs



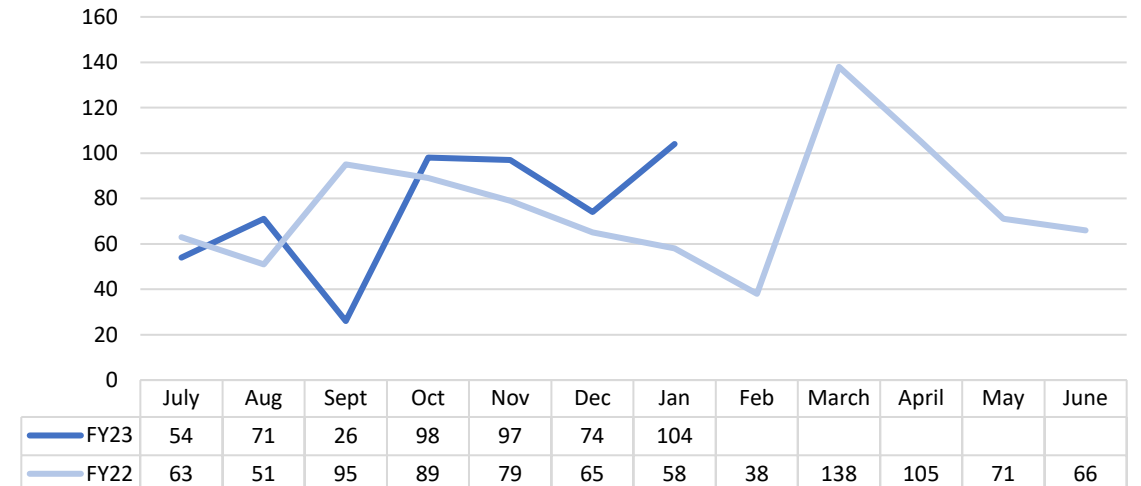
Notes/Comments:

# Code Enforcement

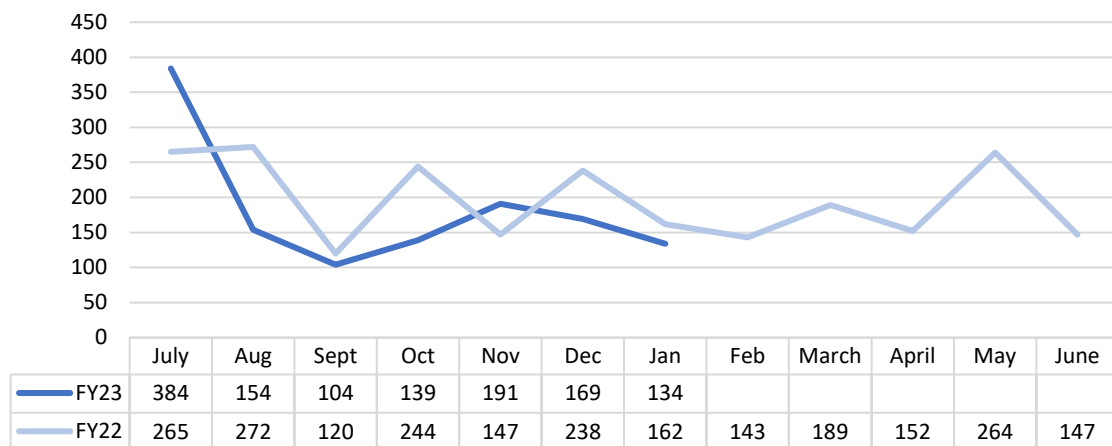
Number of property maintenance and nuisance code cases initiated



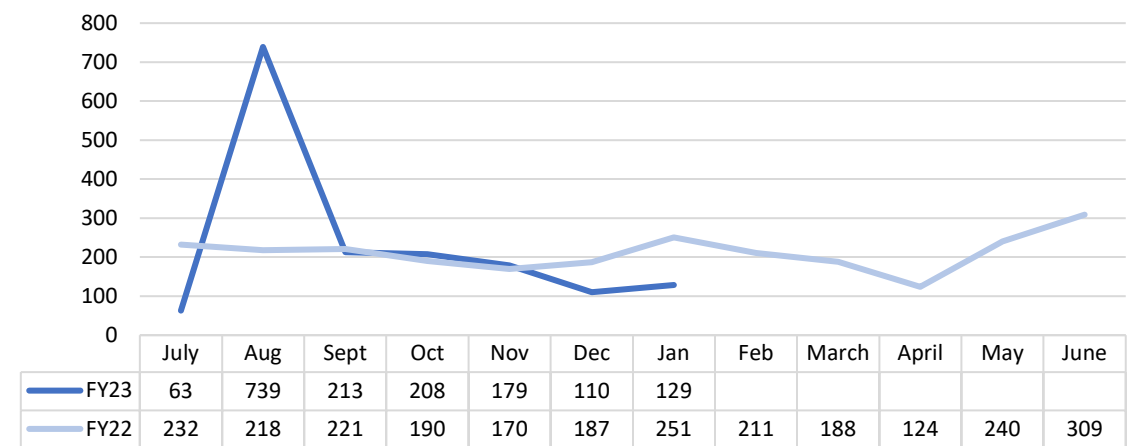
Number of Property Maintenance code violations



Number of proactive inspection activities including surveys, block inspections, notices and customer contact



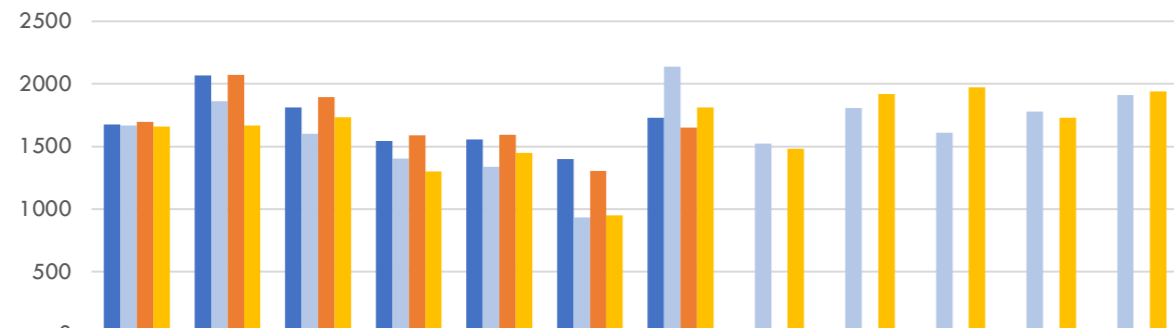
Number of complaint and nuisance inspection activities conducted, including notices, orders and customer contact



Notes/Comments: Most code cites continue to be from trash, deferred maintenance violations and rodent activity on private property; Customer requested 311 complaints increased for property code violations and solid waste on private property.

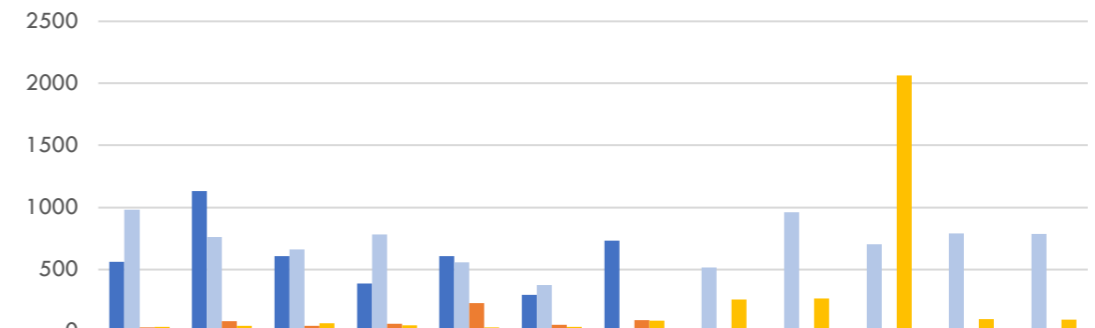
# T&ES Operations

### Service Requests



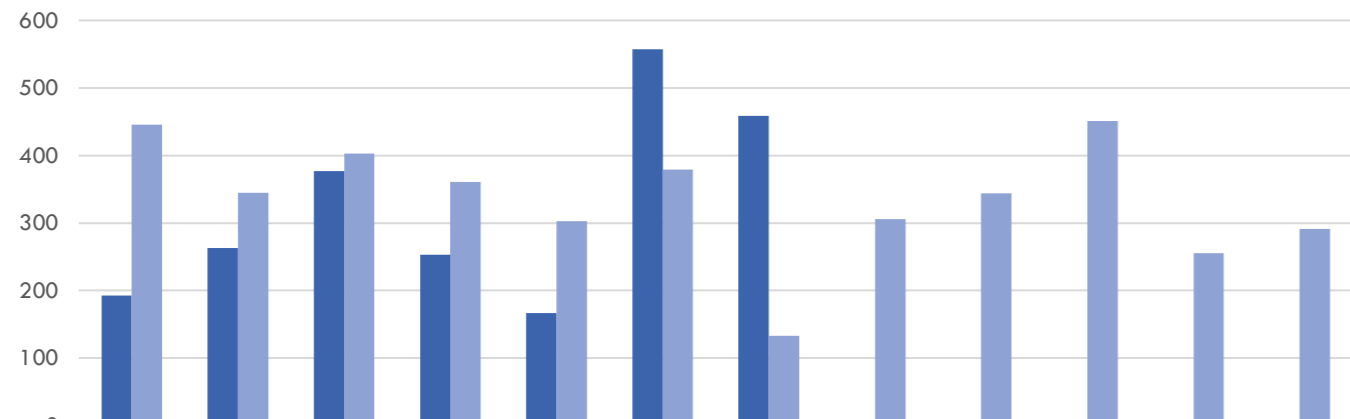
	July	Aug	Sept	Oct	Nov	Dec	Jan	Feb	March	April	May	June
FY23 Requests Received	1677	2066	1812	1542	1554	1401	1730					
FY22 Requests Received	1668	1862	1602	1404	1338	932	2139	1524	1807	1609	1777	1910
FY23 Requests Closed	1695	2071	1894	1591	1592	1304	1649					
FY22 Requests Closed	1659	1666	1734	1301	1447	948	1810	1480	1921	1974	1728	1938

### Sidewalk and Pothole Repairs



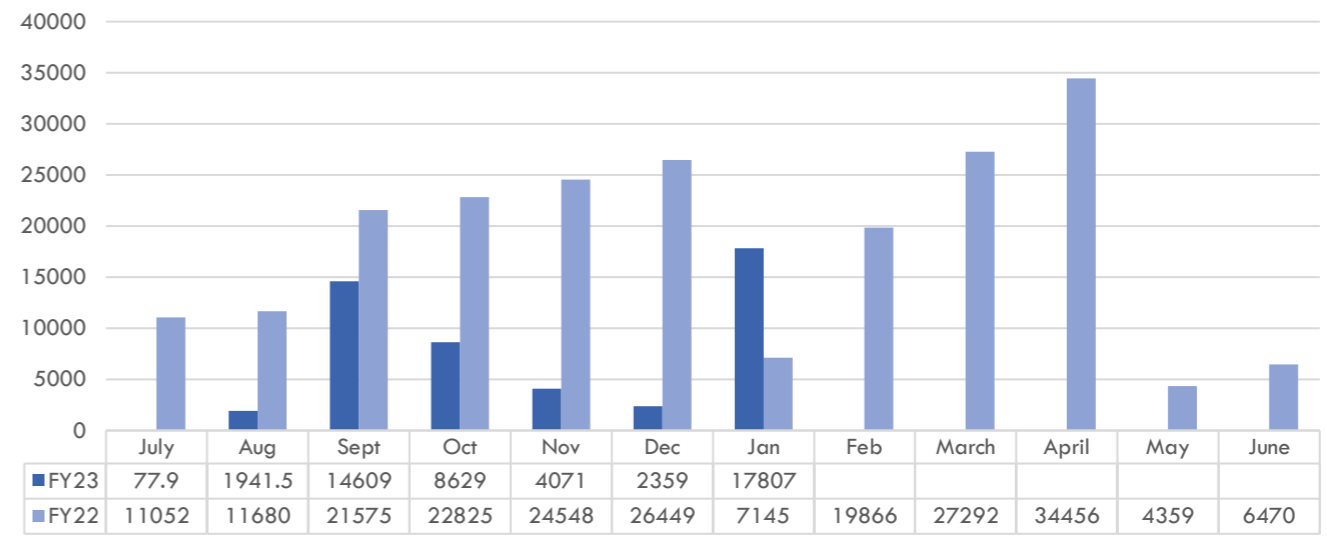
	July	Aug	Sept	Oct	Nov	Dec	Jan	Feb	March	April	May	June
FY23 Brick Sidewalk Repairs	561	1131	608	388	606	296	731					
FY22 Brick Sidewalk Repairs	981	763	661	783	555	374	4	515	961	703	790	787
FY23 Pothole Repairs	32	83	45	61	230	54	90					
FY22 Pothole Repairs	38	46	64	49	34	37	88	257	264	2062	98	96

### Work Orders



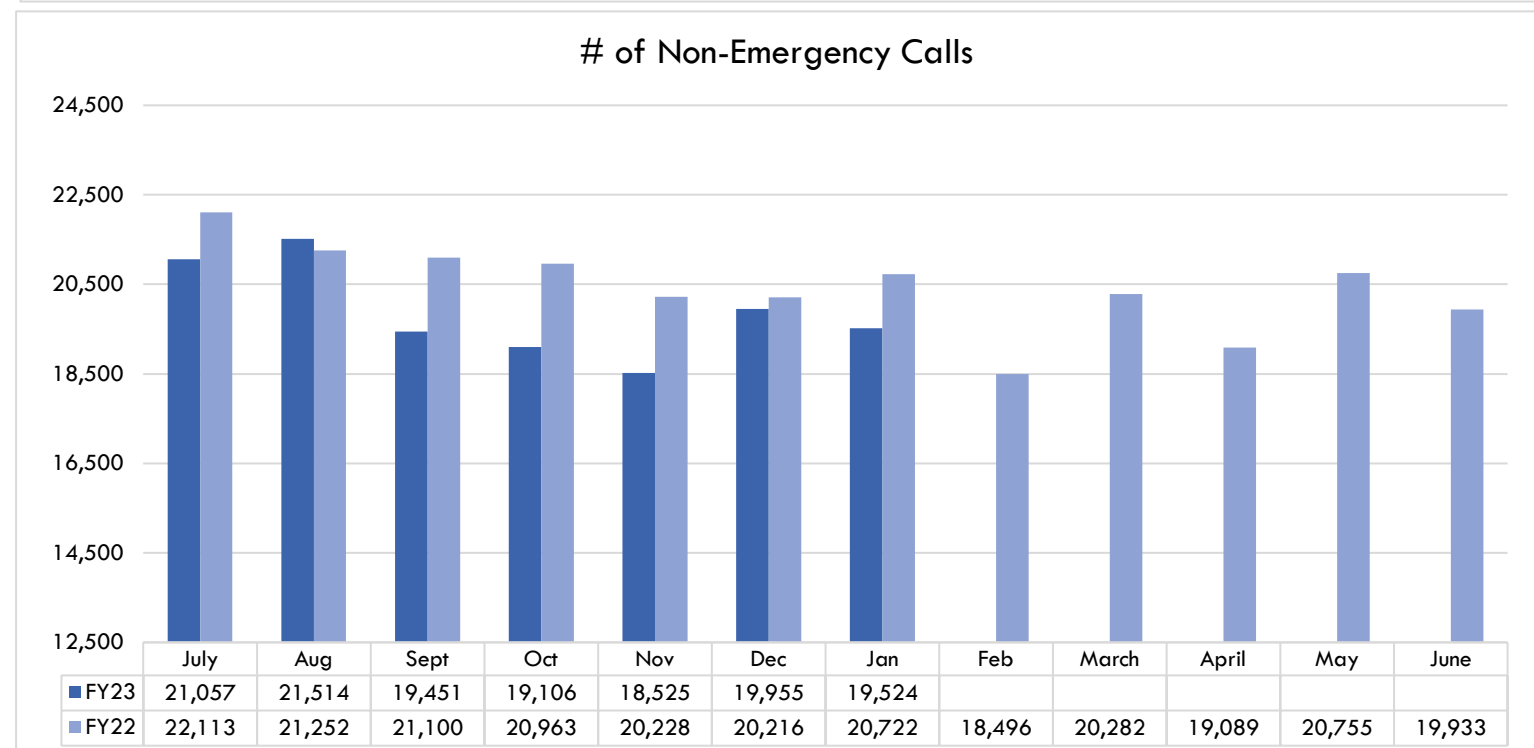
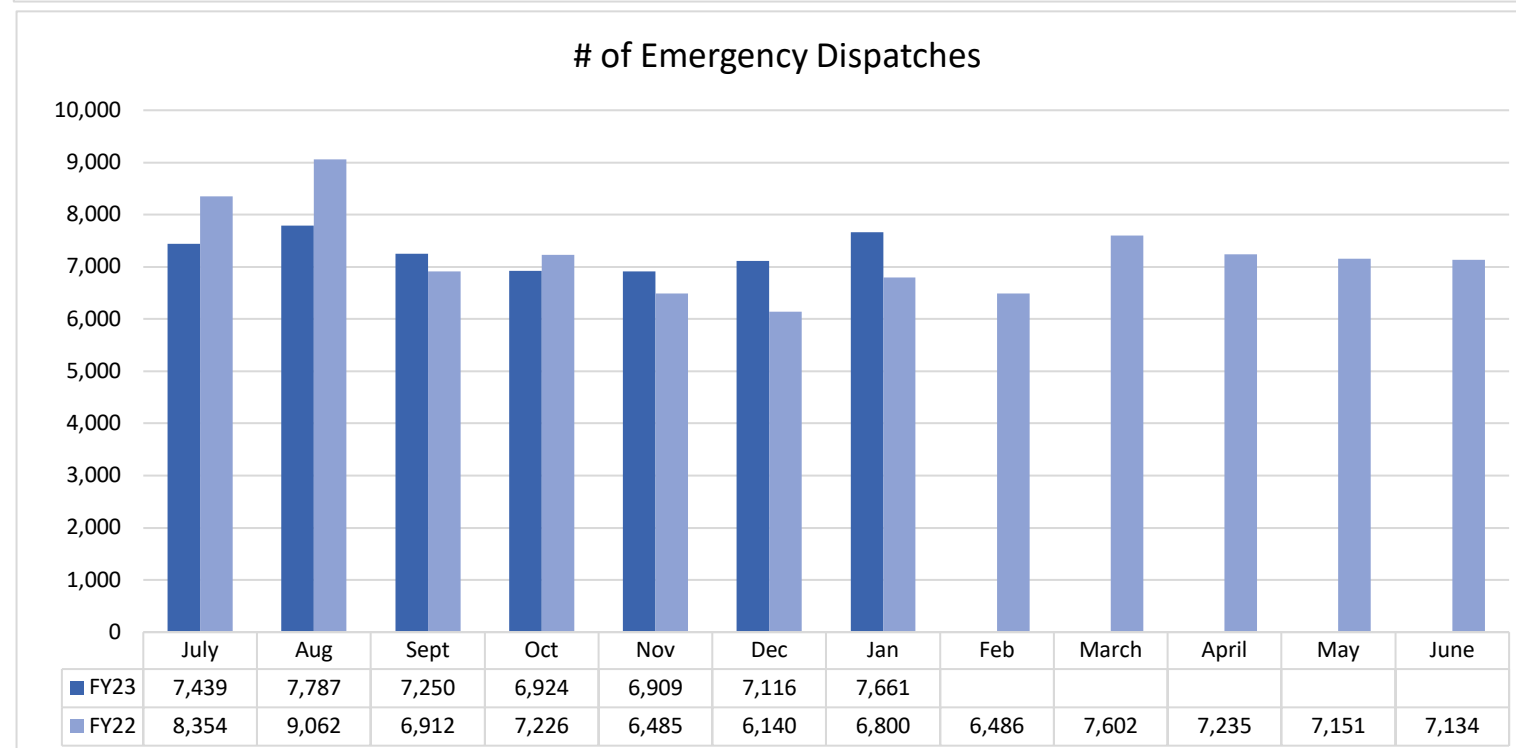
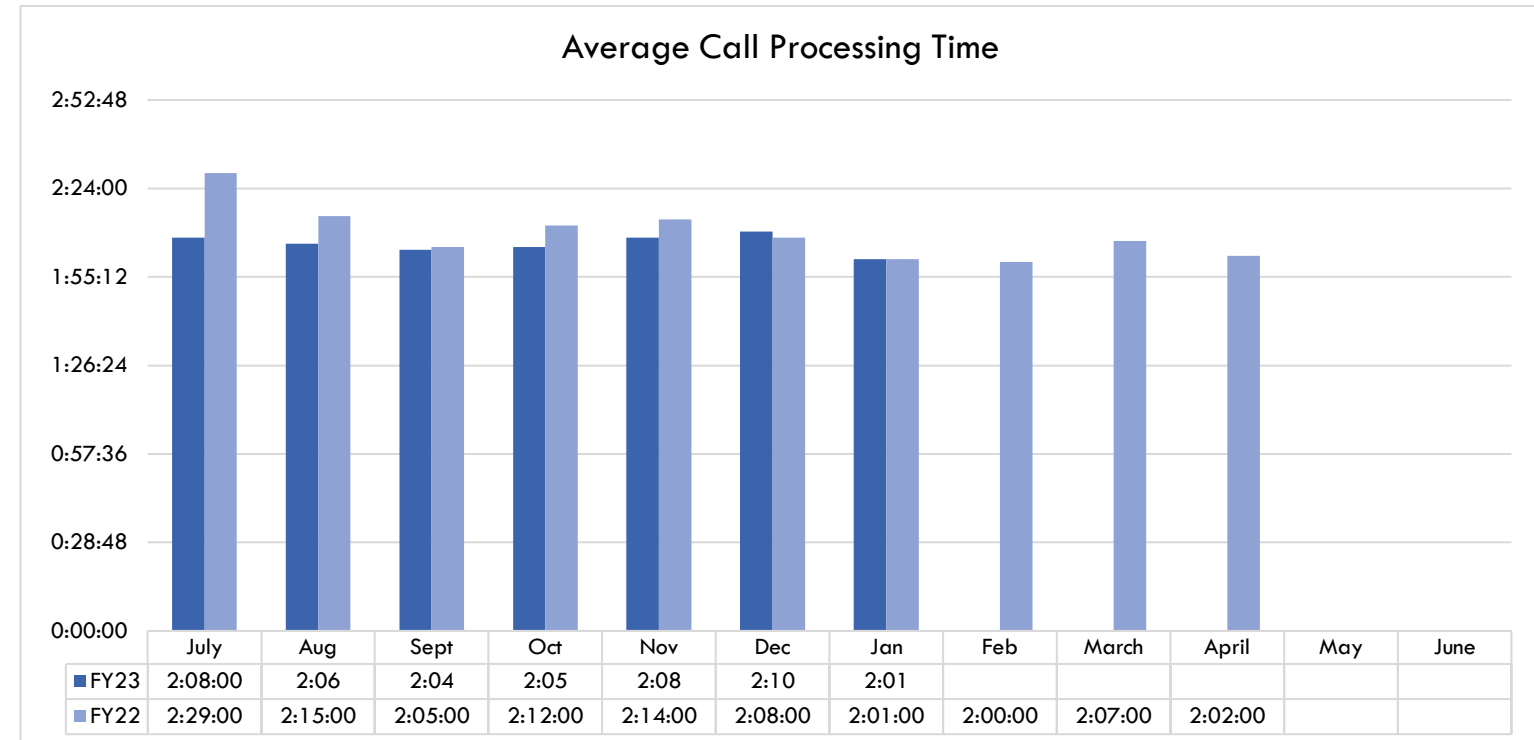
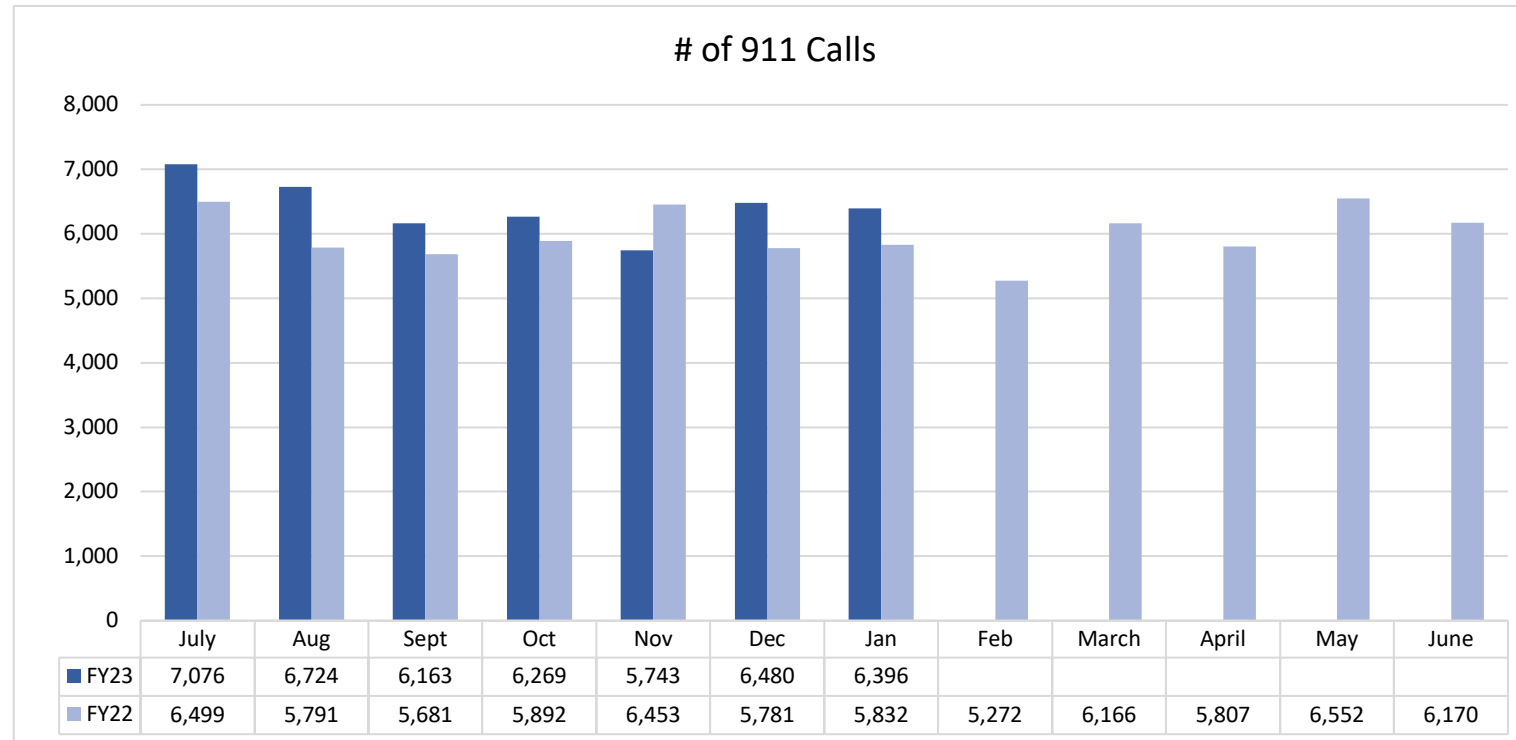
	July	Aug	Sept	Oct	Nov	Dec	Jan	Feb	March	April	May	June
FY23	193	263	377	253	167	557	459					
FY22	446	345	403	361	303	379	133	306	344	451	255	291

### CCTV Sewer Inspections



Work orders for CCTV inspections include catch basins, gravity mains, drainage inlets, combined sewer assets, manholes, sewer runs. Work performed includes preventative maintenance and reactive inspections based on service requests.

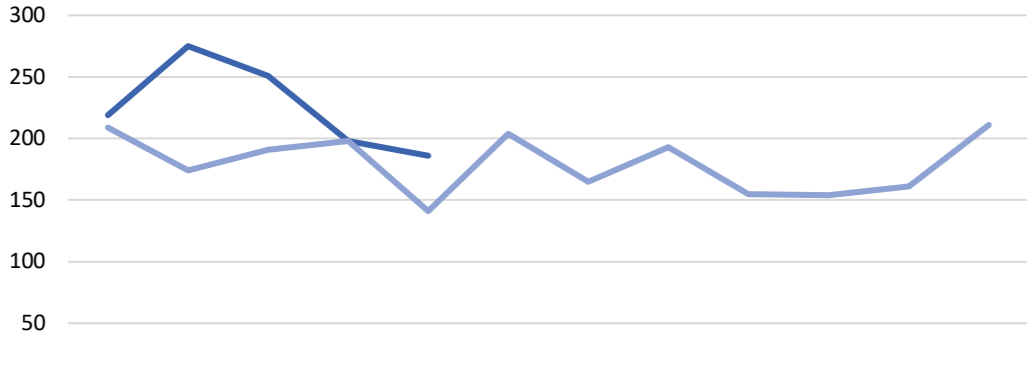
## DEPARTMENT OF EMERGENCY AND CUSTOMER COMMUNICATIONS (DECC)



Notes/Comments:

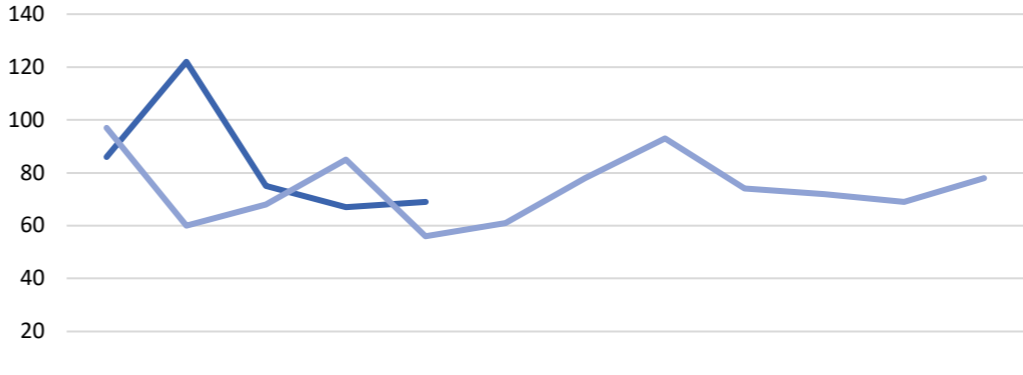
# Commonwealth Attorney

**Misdemeanor Offenses Filed Against Adults**



	July	Aug	Sept	Oct	Nov	Dec	Jan	Feb	March	April	May	June
FY23	219	275	251	198	186							
FY22	209	174	191	198	141	204	165	193	155	154	161	211

**Felony Offenses Filed Against Adults**

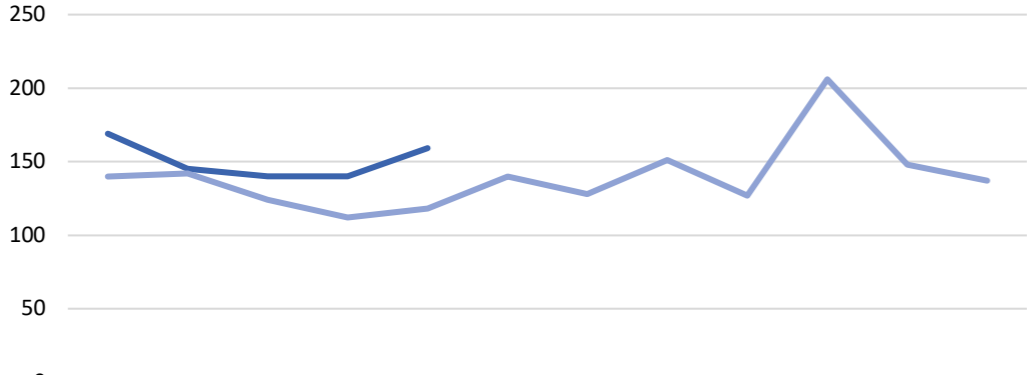


	July	Aug	Sept	Oct	Nov	Dec	Jan	Feb	March	April	May	June
FY23	86	122	75	67	69							
FY22	97	60	68	85	56	61	78	93	74	72	69	78

**Notes/Comments:**

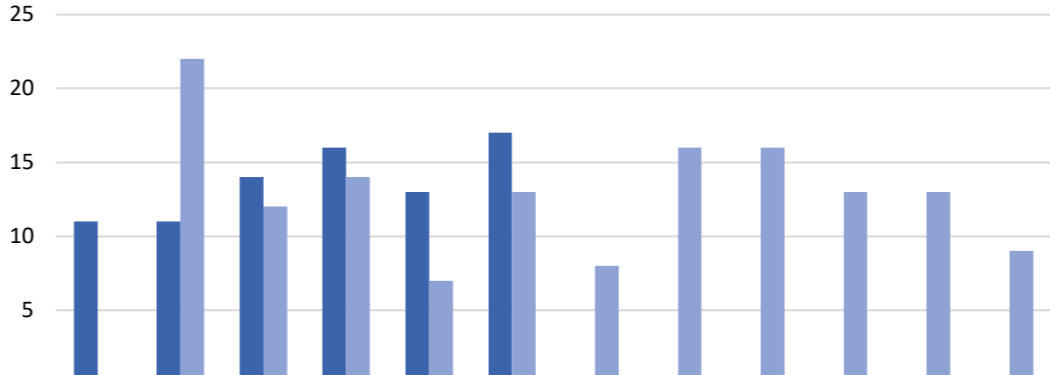
- Misdemeanor and Felony data for December and January are not yet available from state records.

**Traffic Misdemeanor and Felony Offenses**



	July	Aug	Sept	Oct	Nov	Dec	Jan	Feb	March	April	May	June
FY23	169	145	140	140	159							
FY22	140	142	124	112	118	140	128	151	127	206	148	137

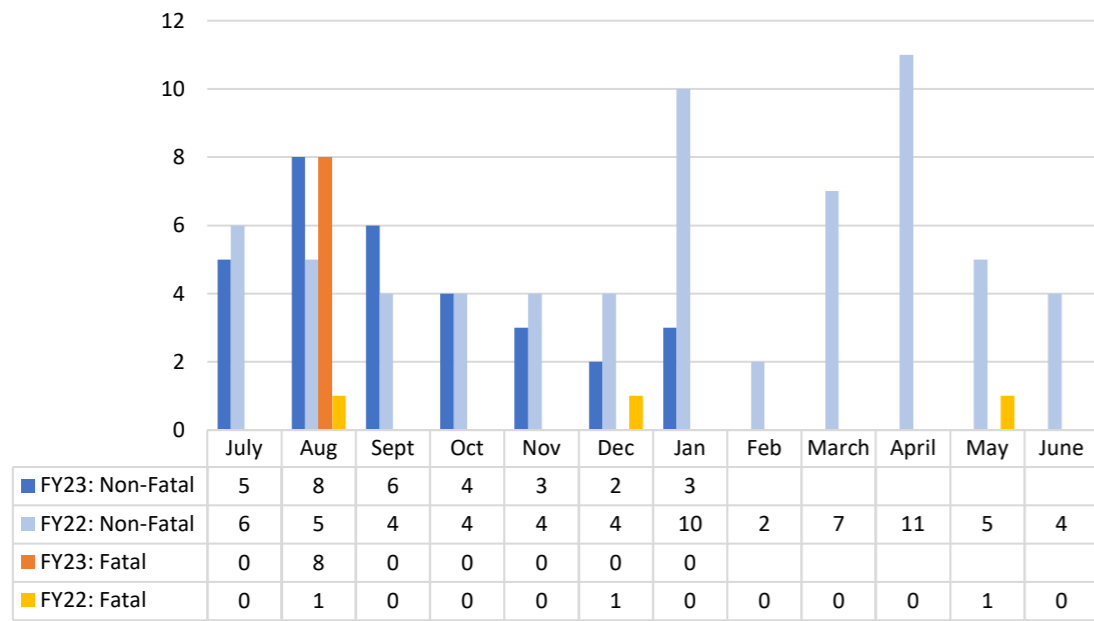
**Grand Jury Indictments**



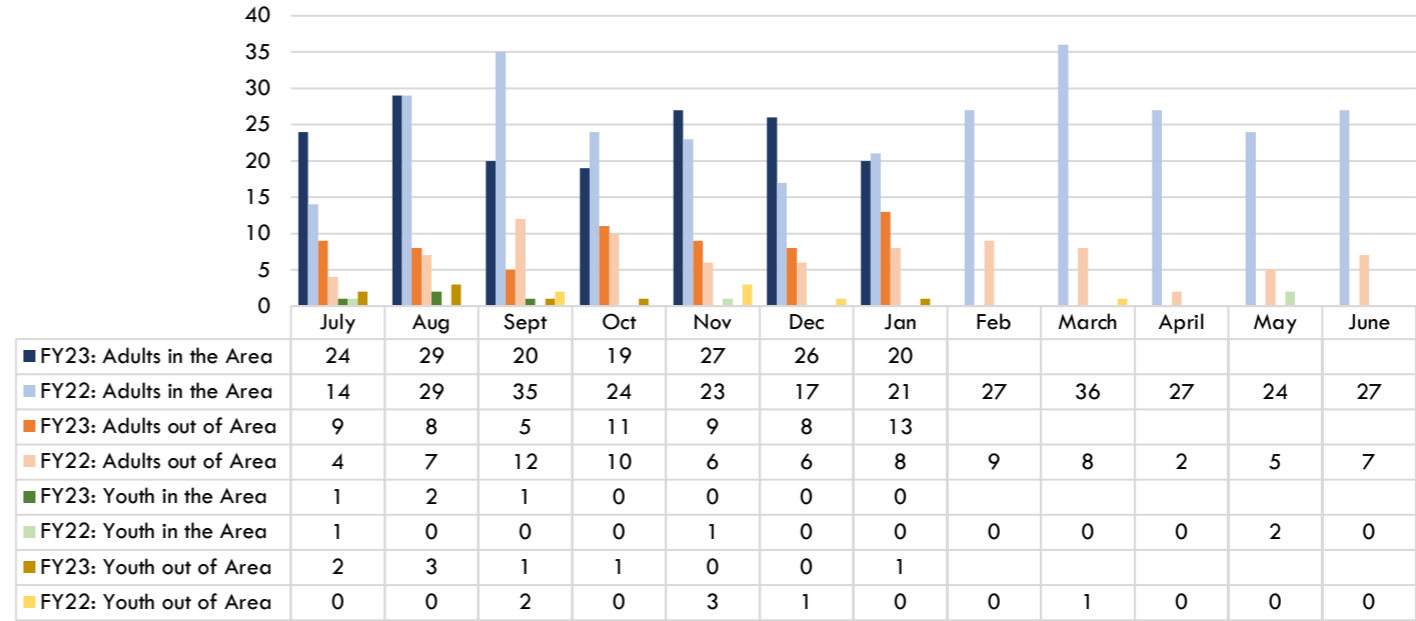
	July	Aug	Sept	Oct	Nov	Dec	Jan	Feb	March	April	May	June
FY23	11	11	14	16	13	17						
FY22	0	22	12	14	7	13	8	16	16	13	13	9

# Department of Community and Human Services

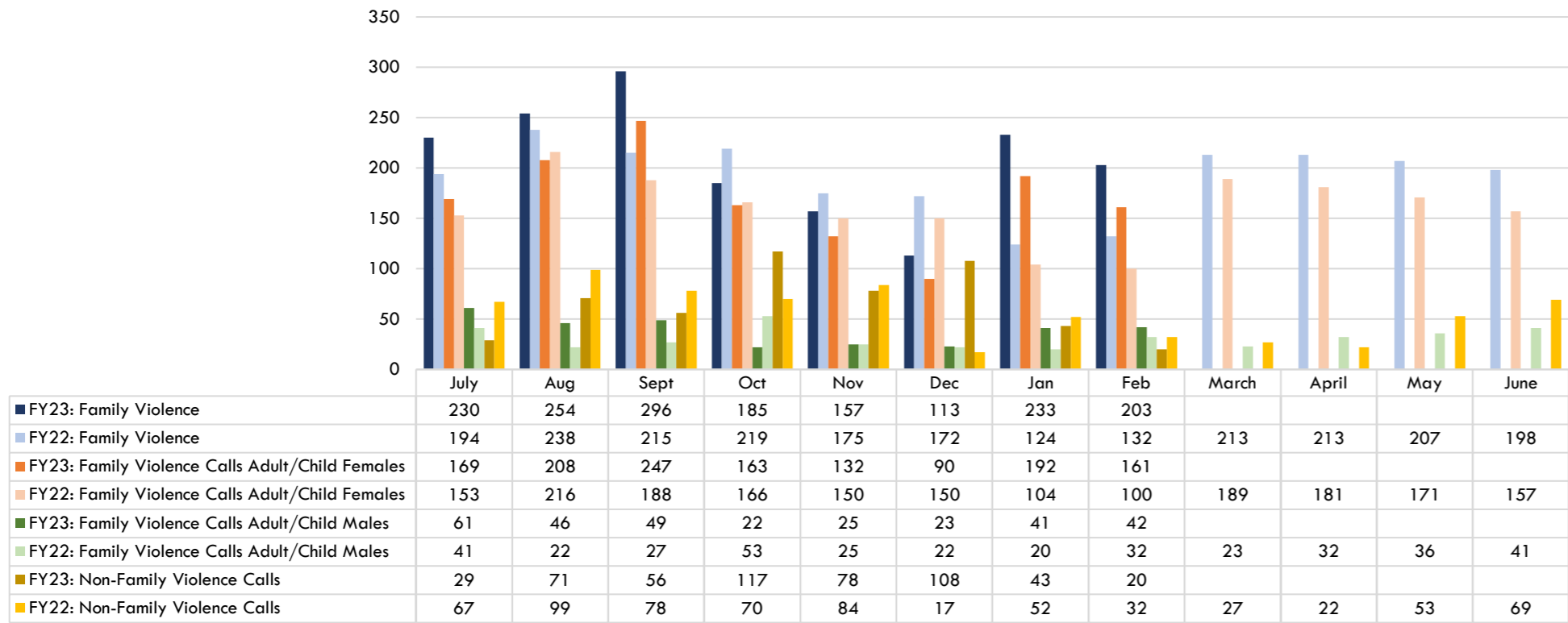
### Opioid Overdoses



### Temporary Detention Orders



### Domestic Violence Hotline Calls

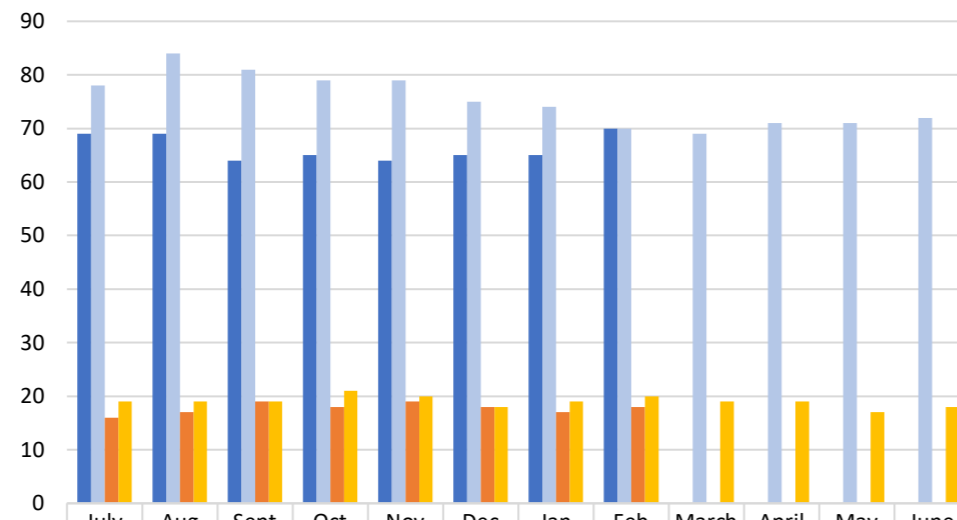


Notes/Comments:



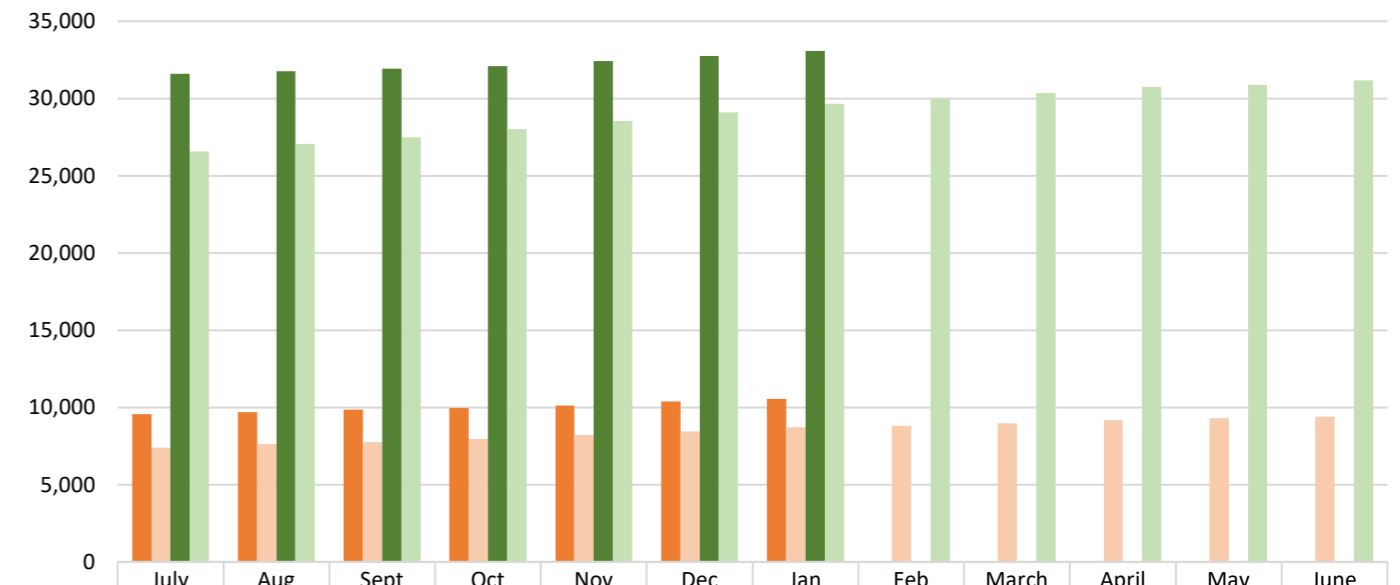
## DCHS, continued

### Foster Care



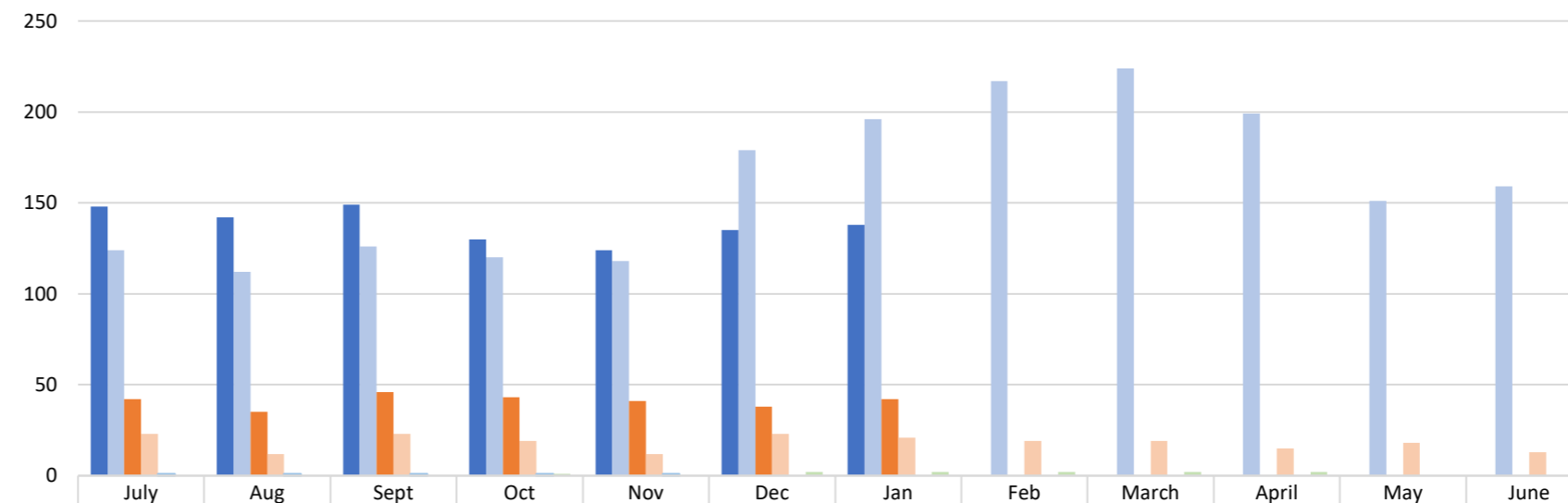
	July	Aug	Sept	Oct	Nov	Dec	Jan	Feb	March	April	May	June
<b>FY23: # of children in Foster Care (under 18)</b>	69	69	64	65	64	65	65	70				
<b>FY22: # of children in Foster Care (under 18)</b>	78	84	81	79	79	75	74	70	69	71	71	72
<b>FY23: # of 18-21 year olds receiving Foster Care services through Fostering Futures</b>	16	17	19	18	19	18	17	18				
<b>FY22: # of 18-21 year olds receiving Foster Care services through Fostering Futures</b>	19	19	19	21	20	18	19	20	19	19	17	18

### Medicaid Expansion Program



	July	Aug	Sept	Oct	Nov	Dec	Jan	Feb	March	April	May	June
<b>FY23: Enrollees</b>	9,554	9,688	9,869	9,967	10,139	10,383	10,556					
<b>FY22: Enrollees</b>	7,409	7,634	7,755	7,945	8,206	8,459	8,696	8,800	8,970	9,177	9,302	9,410
<b>FY23: Persons receiving Medical Assistance</b>	31,585	31,756	31,928	32,090	32,426	32,742	33,095					
<b>FY22: Persons receiving Medical Assistance</b>	26,557	27,059	27,485	28,007	28,541	29,109	29,675	30,016	30,338	30,741	30,890	31,175

### Homelessness

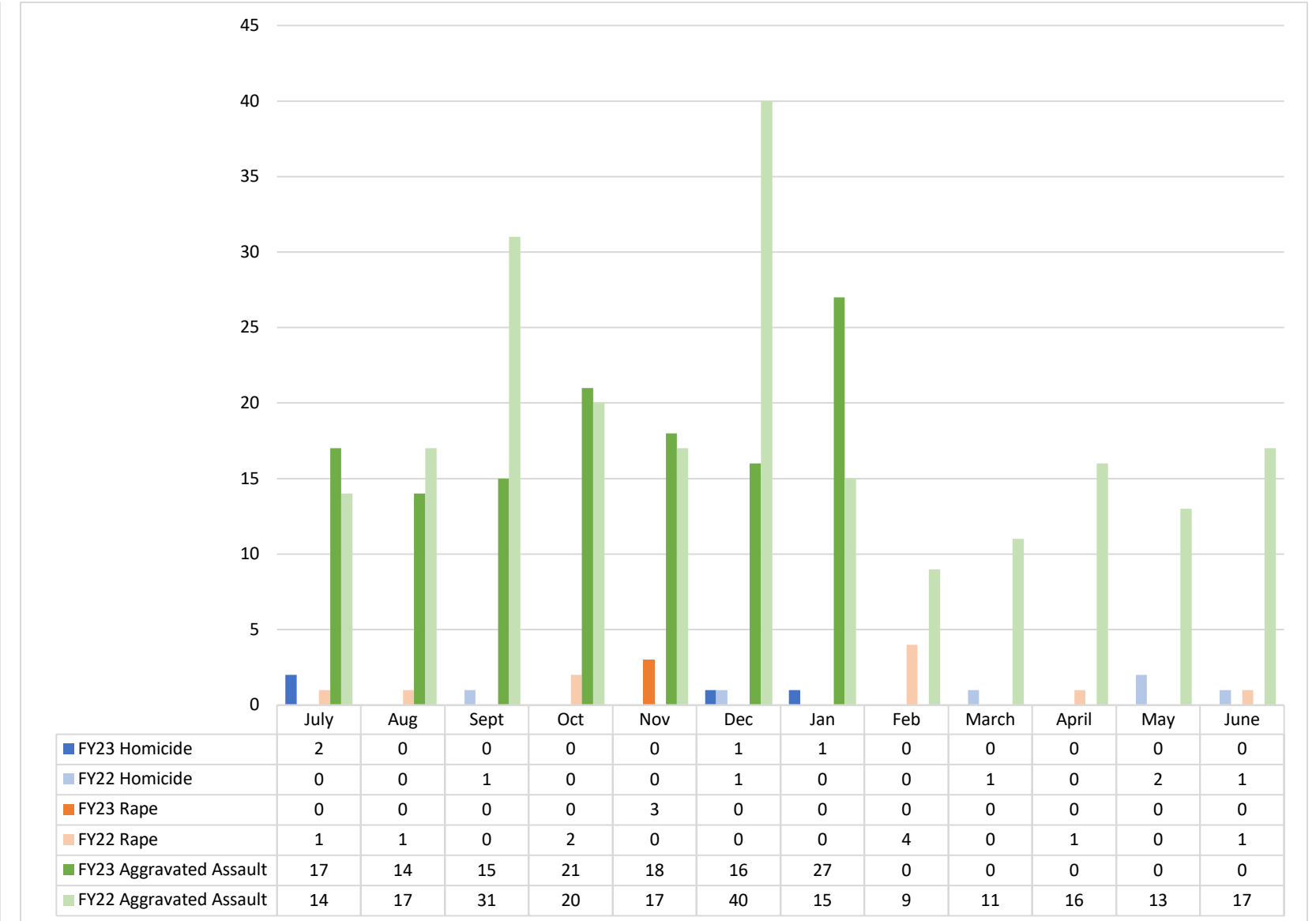
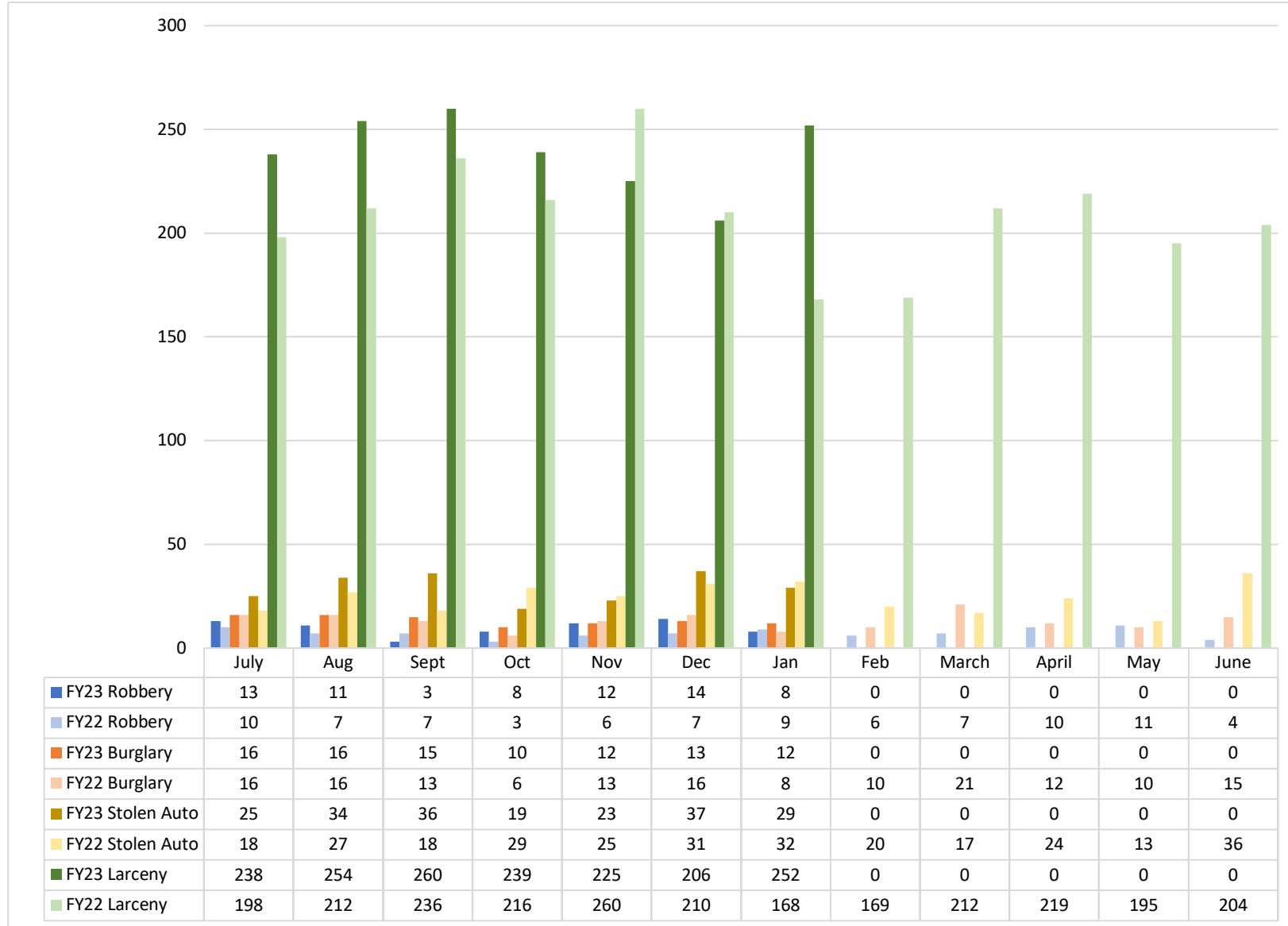


	July	Aug	Sept	Oct	Nov	Dec	Jan	Feb	March	April	May	June
<b>FY23: Total Entries to Emergency Shelter, Safe Haven, or Transitional Housing</b>	148	142	149	130	124	135	138					
<b>FY22: Total Entries to Emergency Shelter, Safe Haven, or Transitional Housing</b>	124	112	126	120	118	179	196	217	224	199	151	159
<b>FY23: Individuals Experiencing Homelessness for the First Time</b>	42	35	46	43	41	38	42					
<b>FY22: Individuals Experiencing Homelessness for the First Time</b>	23	12	23	19	12	23	21	19	19	15	18	13
<b>FY23: Medically Fragile Homeless with APS Involvement</b>	1	1	1	1	1							
<b>FY22: Medically Fragile Homeless with APS Involvement</b>	0	0	0	1	0	2	2	2	2	2	0	0

Notes/Comments:

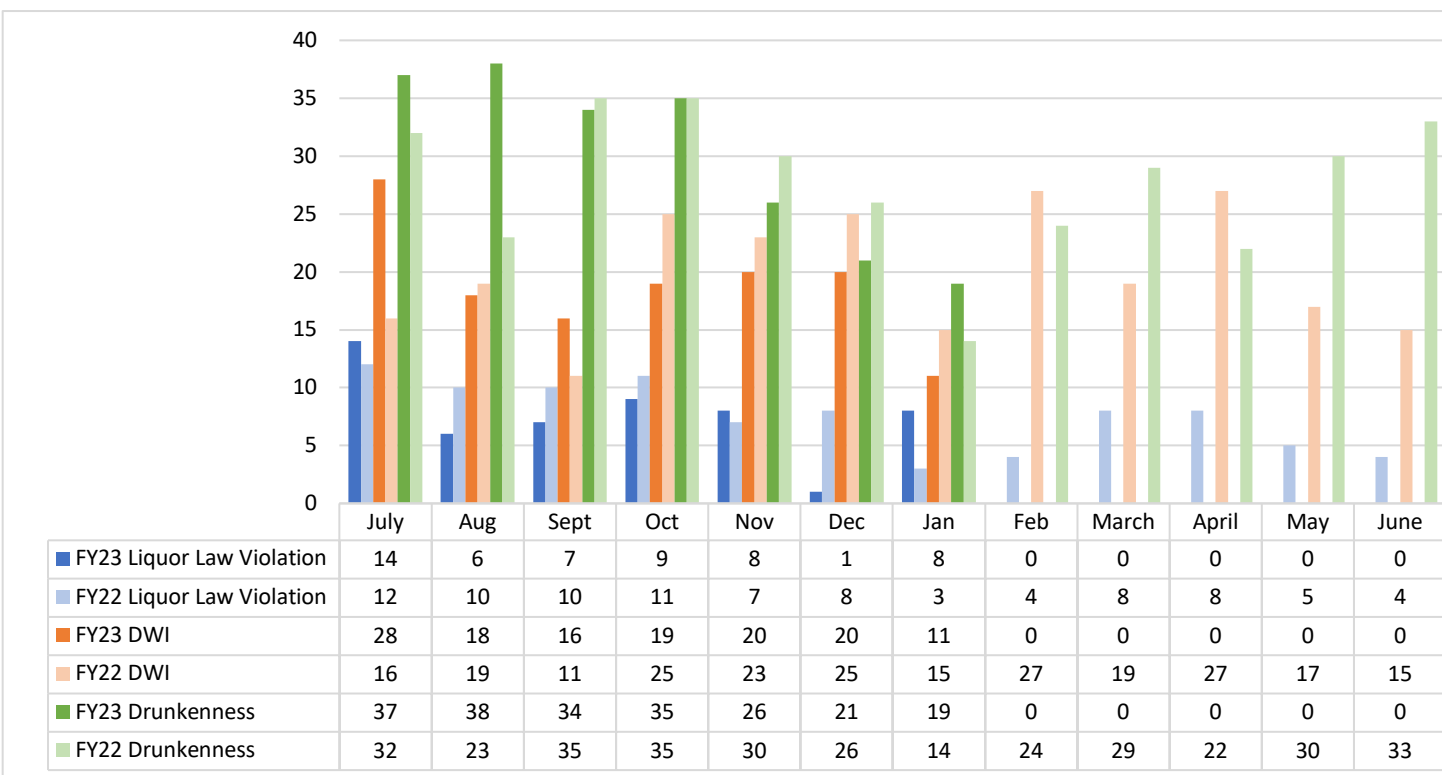
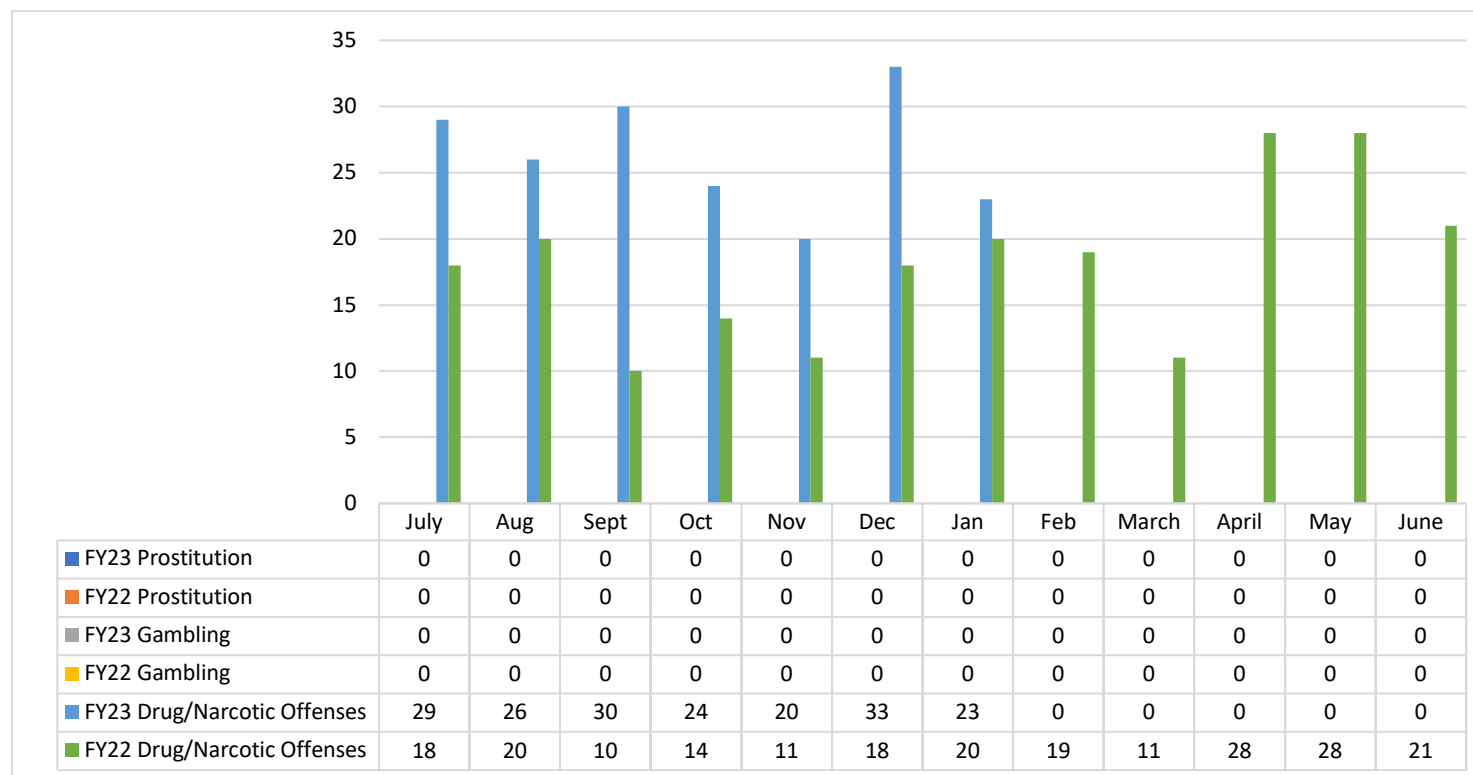
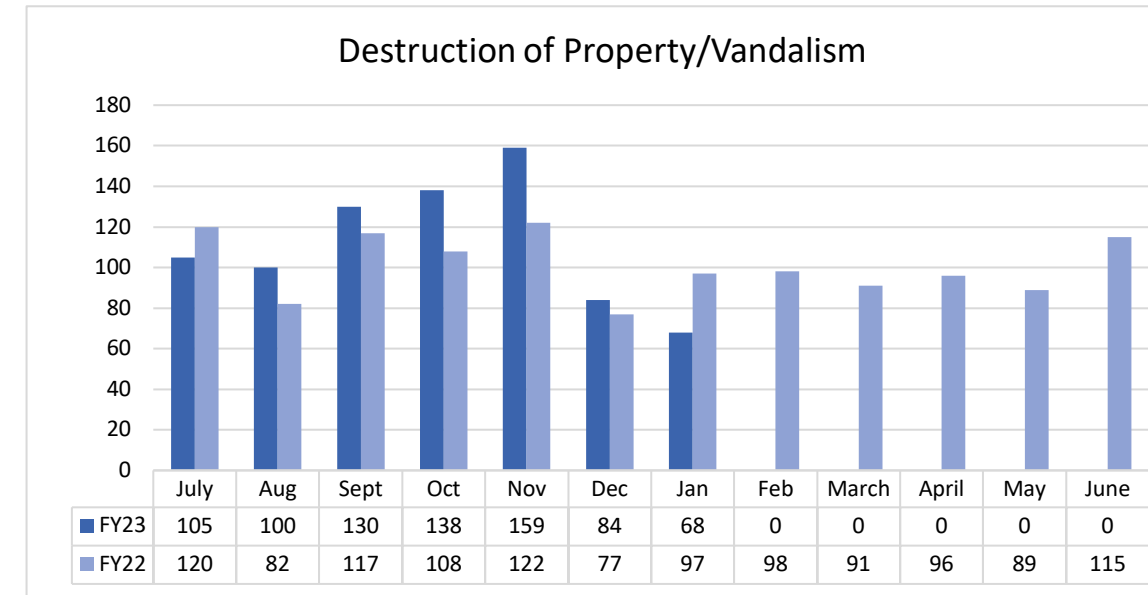
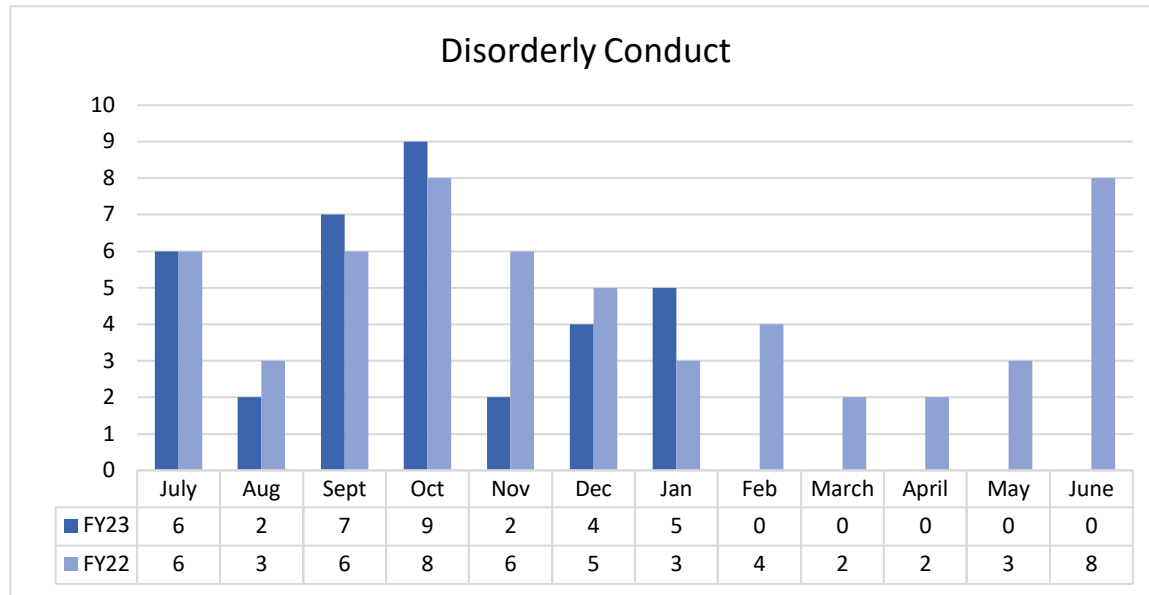
## Alexandria Police Department, Part 1 Crimes

The following offenses are captured by the date they were reported to APD, not the date they occurred. This is in line with NIBRS reporting requirements. The data is preliminary and subject to change so is not official and should not be disseminated without permission from the Chief of Police. There may be discrepancies if prior month report is in draft on the date the data was queried. This document was updated by APD/CAS/ACC on 2/24/2023



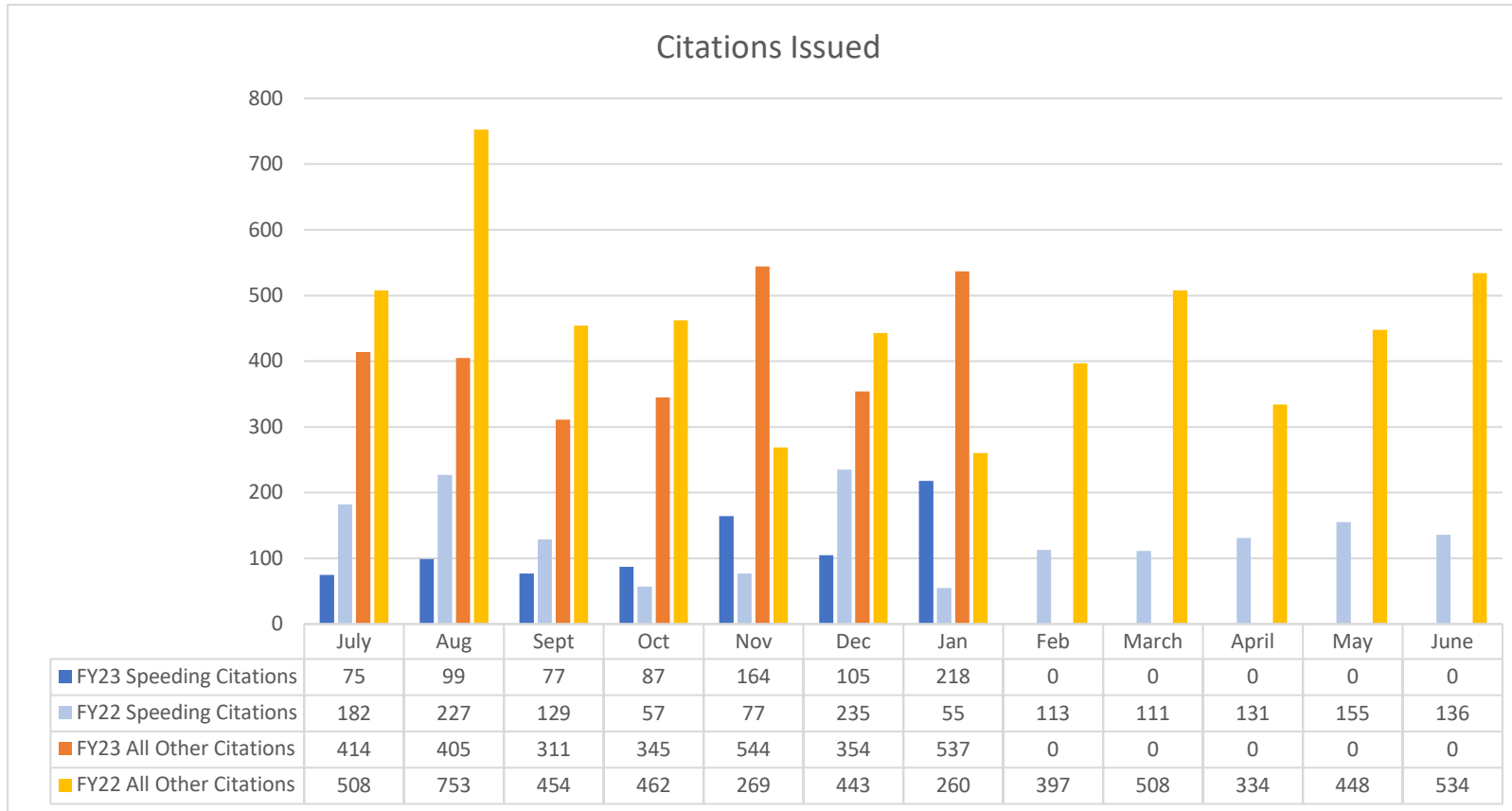
## Alexandria Police Department, Nuisance Crimes

The following offenses are captured by the date they were reported to APD, not the date they occurred. This is in line with NIBRS reporting requirements. The data is preliminary and subject to change so is not official and should not be disseminated without permission from the Chief of Police. There may be discrepancies if prior month report is in draft on the date the data was queried. This document was updated by APD/CAS/ACC on 2/24/2023.



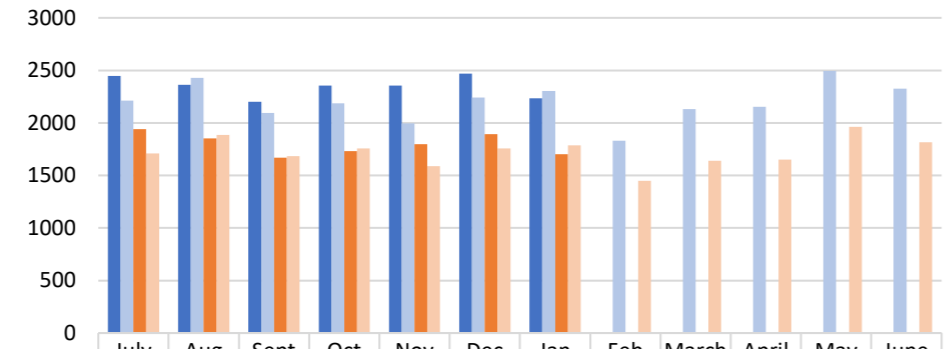
# Alexandria Police Department, Citations

The below citation data is a compilation of handwritten and electronic (eCitations) citations. This document was updated by APD/CAS/ACC on 2/24/2023.

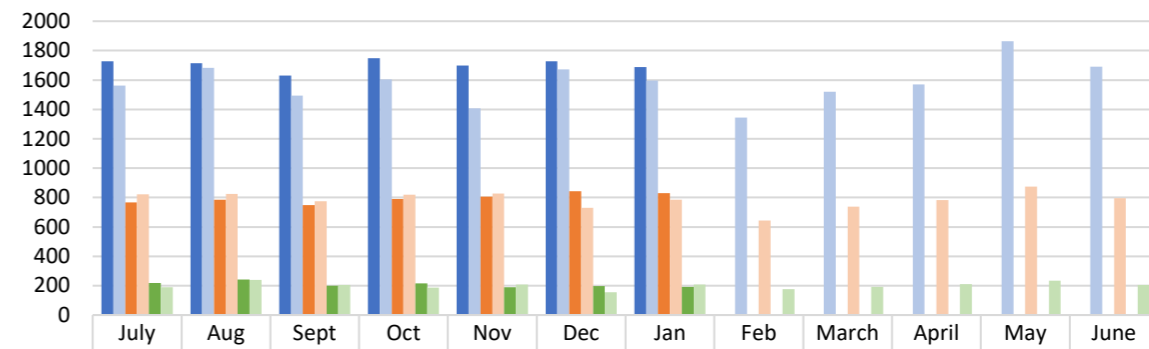


\*November citation data is not yet available as handwritten citations must be manually tallied and entered and they have not yet been fully reviewed. November eCitation data is available upon request but was not listed as it's only half the data.

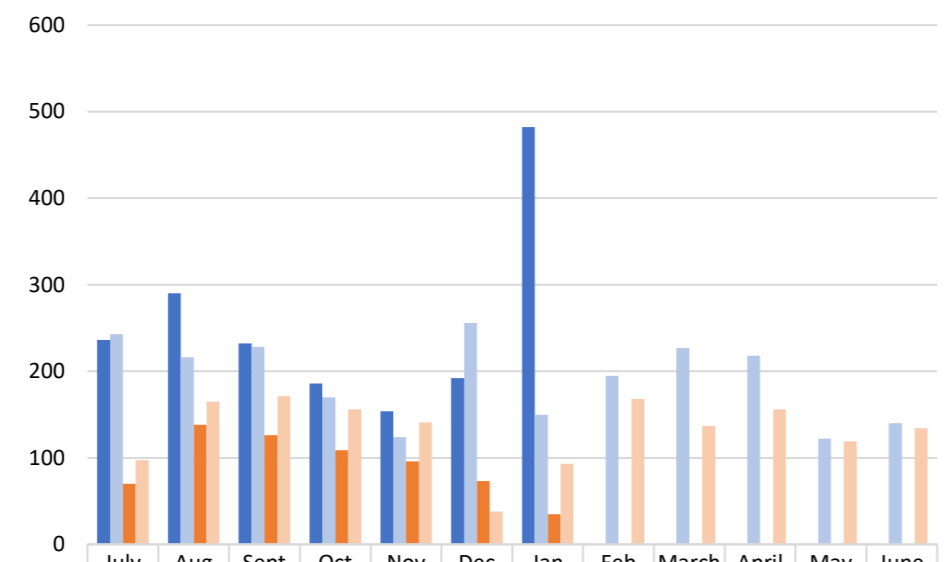
**FIRE**



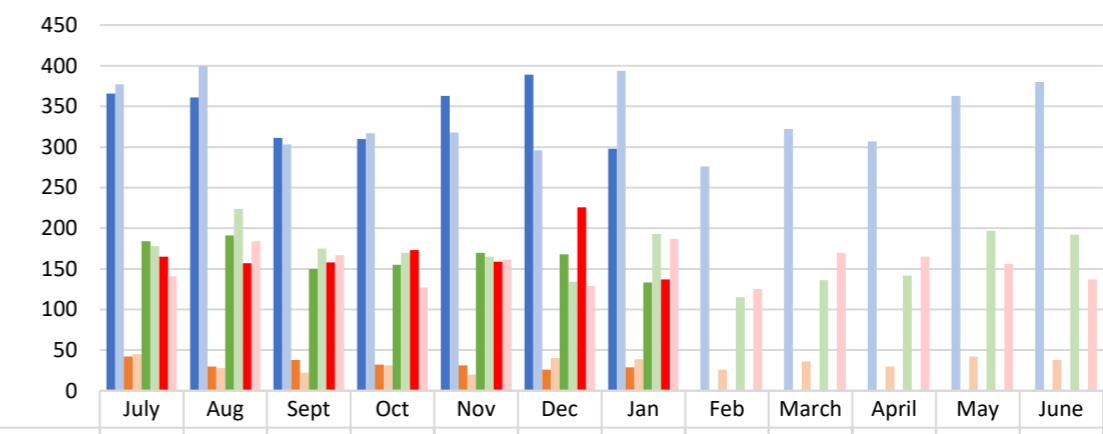
FY23: Total incident responses to by AFD (Within Alexandria Only)	1939	1853	1670	1732	1797	1892	1703						
FY22: Total incident responses to by AFD (Within Alexandria Only)	1708	1884	1684	1758	1590	1756	1787	1449	1638	1650	1964	1815	



FY23: # of patients transported by AFD units	766	785	748	790	806	842	830					
FY22: # of patients transported by AFD units	823	825	775	819	827	730	785	644	738	782	874	795
FY23: # of patients who declined transport by AFD	217	241	200	215	190	198	191					
FY22: # of patients who declined transport by AFD	190	240	206	186	208	154	207	176	192	210	233	204

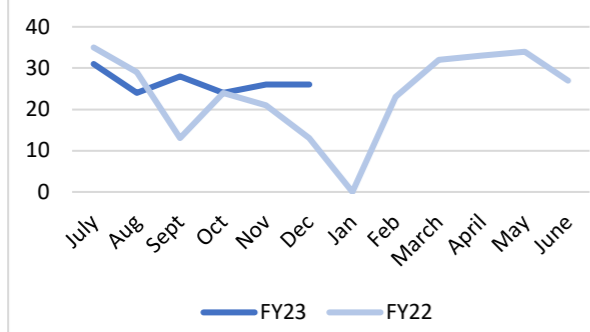


FY23: Number of fire protection systems inspections by the Fire Protection Systems (FPS) Retesting Unit	70	138	126	109	96	73	35					
FY22: Number of fire protection systems inspections by the Fire Protection Systems (FPS) Retesting Unit	97	165	171	156	141	38	93	168	137	156	119	134



FY23: Incidents resulting in structures, vehicles, or outside fires	42	30	38	32	31	26	29					
FY22: Incidents resulting in structures, vehicles, or outside fires	45	28	22	31	20	40	39	26	36	30	42	38
FY23: Incidents resulting in false calls, malfunctioning detection & suppression systems, or unintentional activation of a smoke detector	184	191	150	155	170	168	133					
FY22: Incidents resulting in false calls, malfunctioning detection & suppression systems, or unintentional activation of a smoke detector	178	224	175	170	165	134	193	115	136	142	197	192
FY23: Incidents for public service (non-emergency)	165	157	158	173	159	226	137					
FY22: Incidents for public service (non-emergency)	141	184	167	127	161	129	187	125	170	165	156	137

**Community Paramedic Contacts**



**Notes/Comments:**

- Fire Marshals and Fire Protection Inspections to be updated next quarter.