

# TRAFFIC & PARKING BOARD PUBLIC HEARING

---

April 29, 2024

City Hall – Alexandria, VA

Hybrid meeting will start at 7:00 PM



# Welcome!

## **Public Hearing:**

Board will receive comments from the public in-person and via Zoom

## **Three Ways to Speak:**

- Via e-mail: signed up in advance
- In-person: use sign-up form at back of the room
- Via Zoom: use 'Raise Hand' feature in Zoom
  - \*9 with phone audio

# Agenda: April 29, 2024

## **Welcome & Introductions**

1. Deferrals and Withdrawals
2. Approval of Minutes
3. Written Staff Updates & Public Hearing Follow-up
4. Public Discussion Period

## **Consent Items:**

5. Parking Removal - Intersection of Wheeler Avenue and South Early Street
6. Parking Removal - Intersection of John Carlyle Street and Emerson Avenue

## **Public Hearing Items:**

6. Parking and Traffic Changes - Mount Vernon Avenue at the Intersections of Glebe Road, Russell Road, and Executive Avenue
8. Parking and Traffic Changes - Glebe Road/Montrose Avenue/Ashby Street Intersection and Conversion of Ashby Street to One-Way Westbound

## **Information Items:**

9. Staff Updates  
King-Bradlee Project Update
10. Commissioner Updates

# Approval of the Minutes

# Written Updates & Public Hearing Follow-Up

# Public Discussion Period

**This period is restricted to items NOT listed on the docket**

If you would like to speak, please:

- Submit a Public Speaker form (if in person)
- Raise your hand on Zoom (if virtual)

# 5. Parking Removal - Intersection of Wheeler Avenue and South Early Street

---

Agenda Item 5

Presenter: Silas Sullivan



# Background & Location

**Location:** Wheeler Avenue & S Early Street

**What:** Remove 2 parking spaces

**Why:** Resident request for safe and visible pedestrian crossing

**Corridor Background:** Commercial and residential uses surround intersection

**Current Parking Restrictions:**  
Overnight parking is restricted (9 p.m. – 6 a.m.)





# Current Conditions



SEARLY

WHEELER



No stop bar

No marked pedestrian crossing

Existing parking area leads up to entrance of day care parking lot

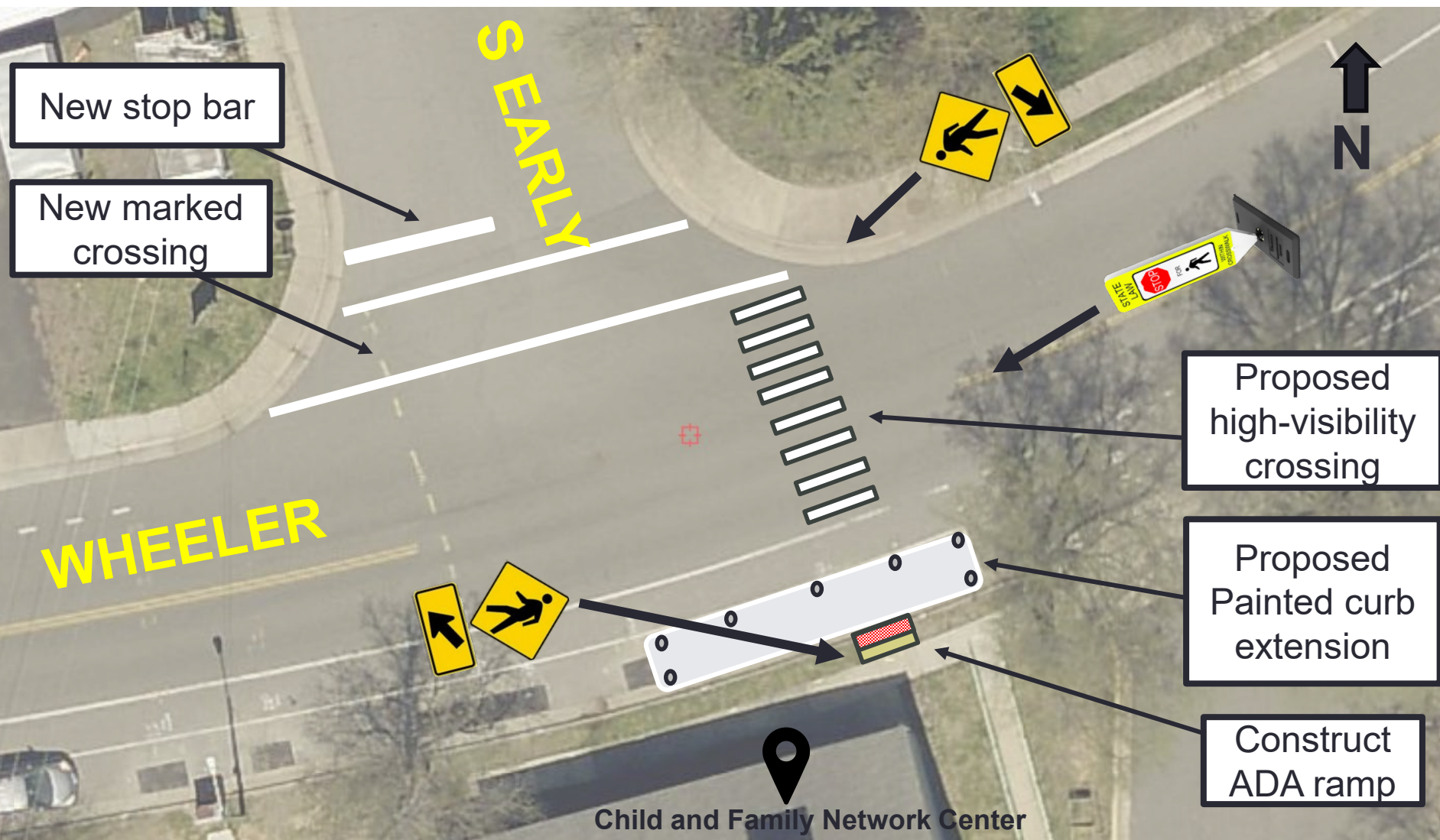


Makeshift stop bar by unknown party

# Proposed Parking Removal



# Proposed Concept



# Outreach

## Information shared via:

- ✓ Public notice signs posted near intersection
- ✓ Staff emailed relevant stakeholder groups

## Community Feedback:

- Support for pedestrian safety improvements
- Letter of support from Executive Director of Child and Family Network Center
- Suggestions regarding improved bike facilities and a pedestrian crossing near Port City Brewery

## Recommendation

Recommend the Director of T&ES remove two (2) parking spaces on Wheeler Avenue, near its intersection with South Early Street.

# 6. Parking Removal - Intersection of John Carlyle Street and Emerson Avenue

---

Agenda Item 6

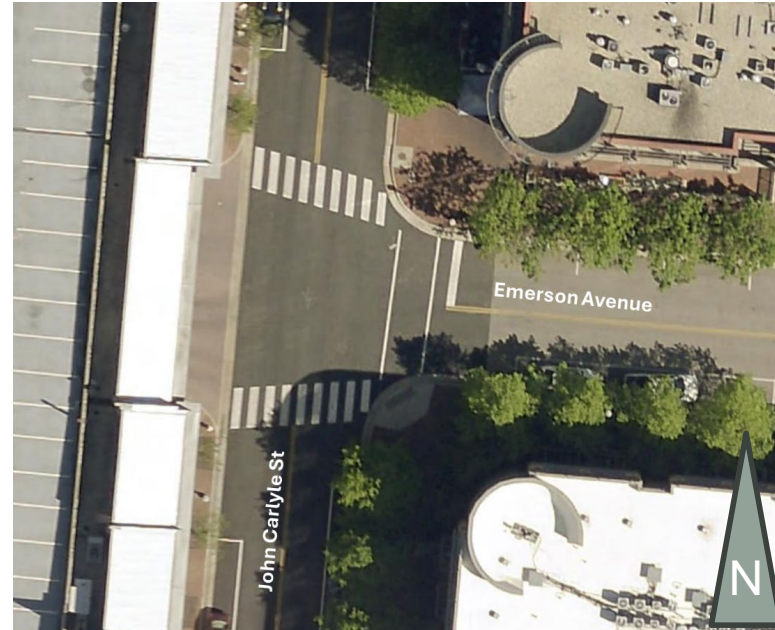
Presenter: Dan Scolese



# Background & Location

## John Carlyle Street and Emerson Avenue

- Relatively balanced volumes
- No crashes
- Ped active area
- Sight distance is obstructed by parking or parking garage pillar
- Northeast corner observed to be used as pick-up/drop-off (Uber, deliveries)



Existing Streetview Condition



# Proposed Concept





# Outreach

- Staff coordinated with the Carlyle Council to develop a solution that would address pedestrian safety and visibility.
- The Carlyle Council liaison coordinated with the Council and businesses on the process and recommendations.
- The City posted the paddle board signs in Fall 2023
- Staff will notify the Carlyle Council about parking removal and changes as consistent with those programs.

## Recommendation

Recommend the Carlyle Council and the Director of T&ES remove one parking space on John Carlyle Street at Emerson Avenue.

# Mount Vernon Avenue at the Intersections of Glebe Road, Russell Road, and Executive Avenue

---

Agenda Item 7

Presenter: Alex Carroll



# Background & Project Location

## Vision Zero

- Eliminate fatal and severe crashes by 2028

## Alexandria Mobility Plan

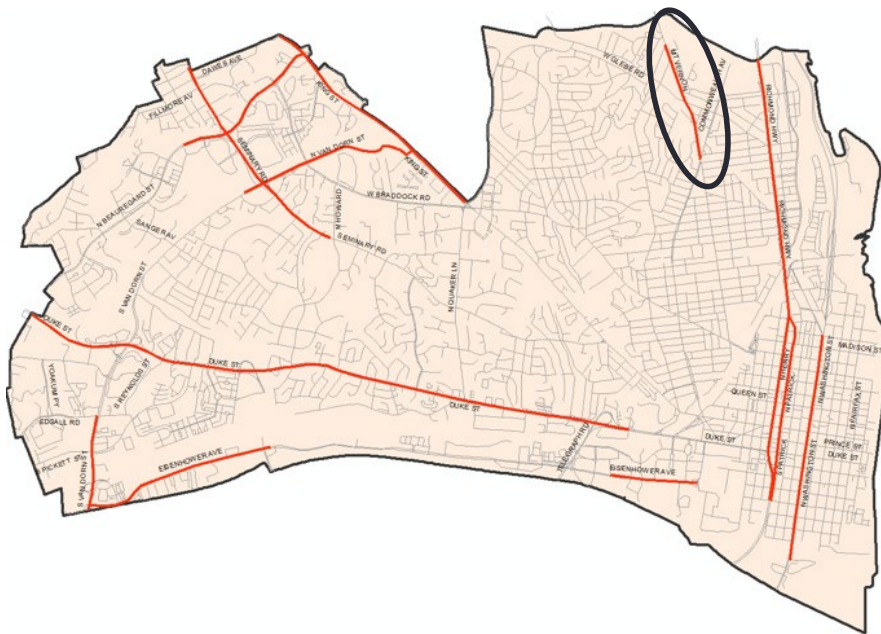
- Strategy: Create a safe, well-maintained, and comfortable walking and bicycling environment
- Strategy: Improve the transit rider experience, including access to bus stops

## Arlandria-Chirilagua Small Area Plan

- Called for intersection improvements for multimodal safety



# Crash History



## High-Crash Corridor

- Of 141 fatal and severe crashes from 2016-2020, 70% occurred on just 10% of City streets

## Crash History, 2016-2023

- 55 total crashes
- 7 pedestrian crashes, including 3 fatalities
- 30 angle crashes, including 1 severe crash

# Four Mile Road

## Existing

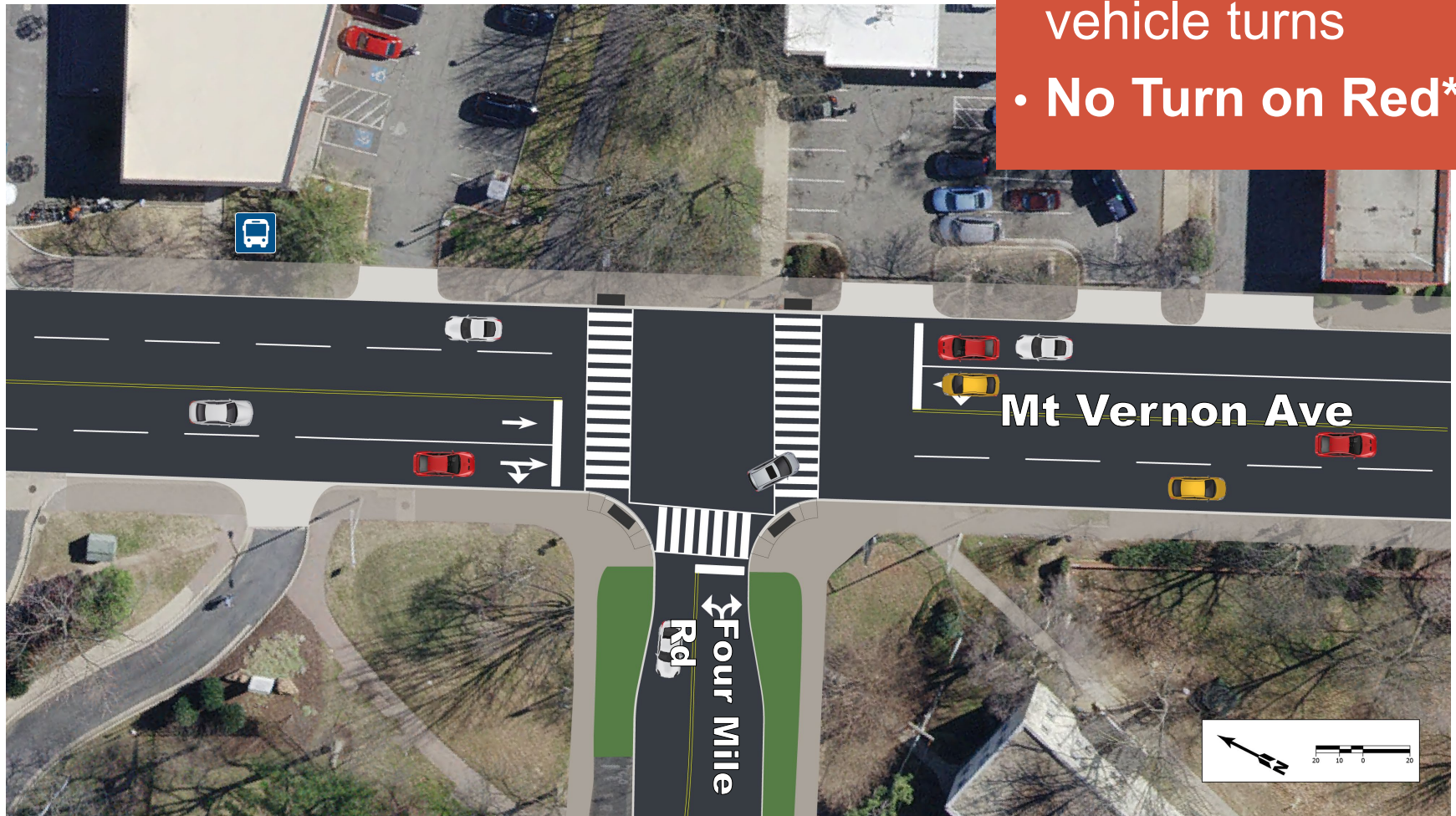
- Access to Four Mile Run Park Trail and Casa Chirilagua
- Long crossing distances
- Four Mile Rd approach treated as multiple lanes



# Four Mile Road

*Recommended*

- Curb extensions to reduce crossing distance and slow vehicle turns
- **No Turn on Red\***



*\*Requires review by TPB*

# Executive Avenue

*Existing*

- Long crossing distances
- Fast turns onto Executive Avenue
- Limited crossing opportunities
- Limited bus stop amenities

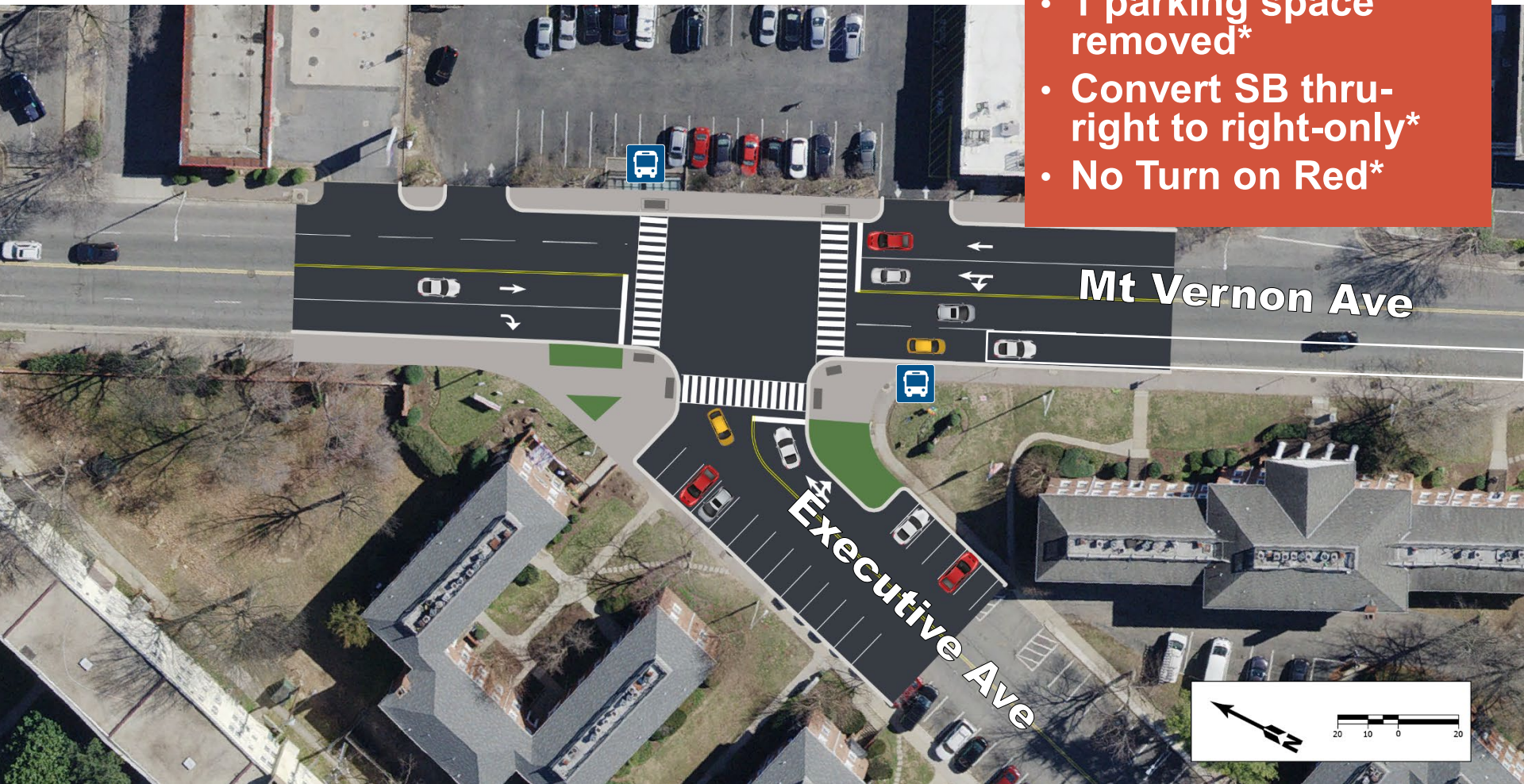




# Executive Avenue

## Recommended

- Curb extensions
- Additional crosswalk
- Opportunity for green space and bus shelter
- 1 parking space removed\*
- Convert SB thru-right to right-only\*
- No Turn on Red\*



*\*Requires review by TPB*

# Russell Road

## Existing

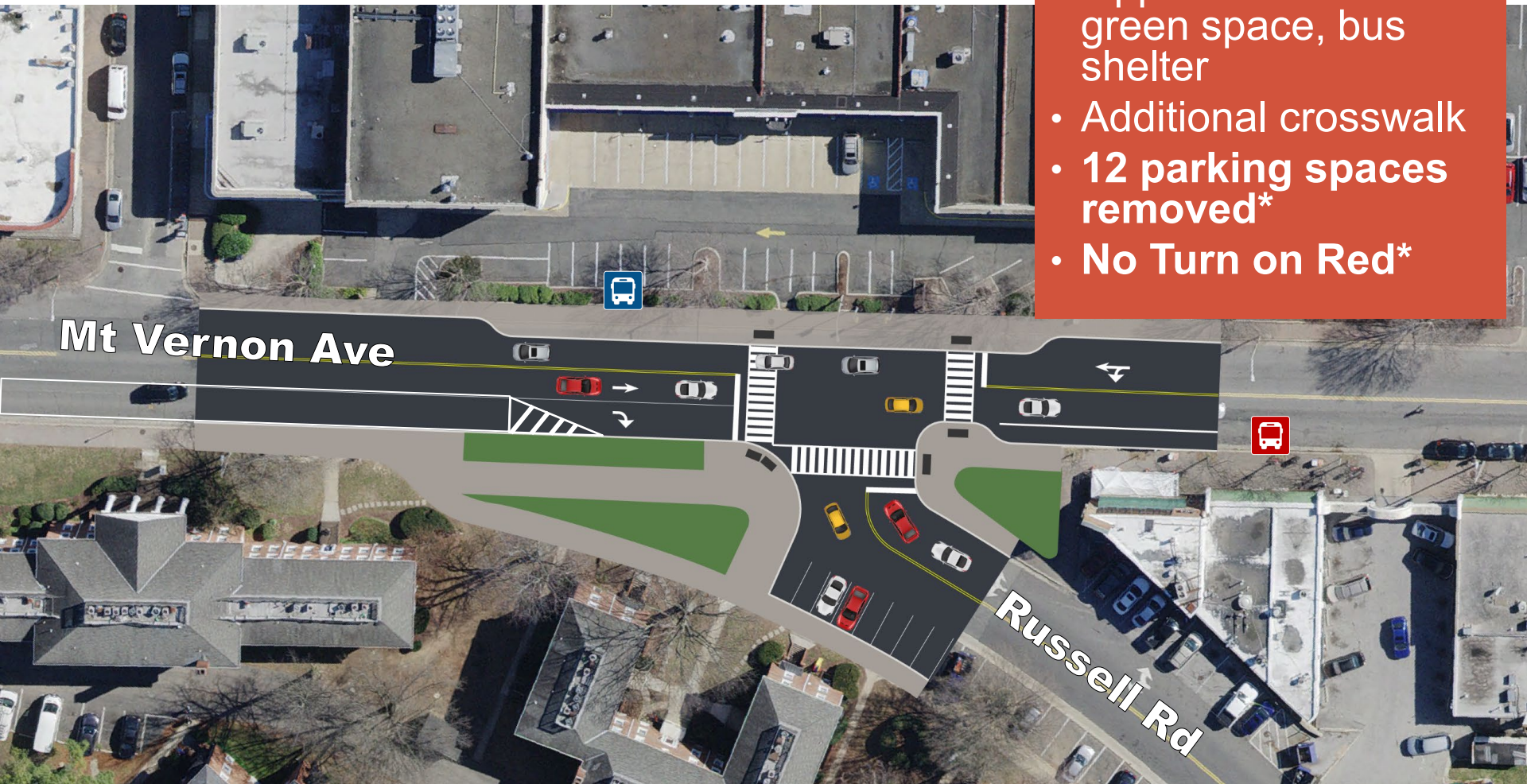
- Long crossing distances
- Fast turns onto Russell Rd
- Limited crossing opportunities
- Inconvenient pedestrian route
- No bus stop amenities



# Russell Road

## Design Option 1 of 2 (Recommended)

- Curb extensions
- Continuous walking route
- Opportunities for green space, bus shelter
- Additional crosswalk
- 12 parking spaces removed\*
- No Turn on Red\*



*\*Requires review by TPB*

# Russell Road

## *Design Option 1 of 2 (Recommended)*

- Convert 8 spaces from 7PM-7AM parking to unrestricted parking
- -12 spaces by Presidential Greens permit only
- +2 spaces
- +7 spaces  
(Loading Only 7AM-6PM;  
Unrestricted 6PM-7AM)

Mount Vernon Ave

Russell Rd



# Russell Road

## *Design Option 2 (Not Recommended)*

- Curb extensions
- Some opportunities for green space, bus shelter
- Additional crosswalk
- **Removes 8 parking spaces\***
- **No Turn on Red\***



Mt Vernon Ave

Russell Rd

40 20 0

# Glebe Road

## Existing

- Long crossing distances
- Intersection angle encourages fast turns
- Unightly intersection
- Numerous driveways create conflict
- Two people killed while walking



McDonald's

Glebe Rd

Greg's  
Automotive

Mt Vernon Ave

Mr. Wash



7 Eleven

# Glebe Road

## *Design Option 2 of 3 (Recommended)*

- Replace traffic signal with single-lane roundabout\*
- Reduce travel lanes to one in each direction at roundabout\*
- Curb extensions and pedestrian median islands
- Convert McDonalds exit driveway and northernmost driveway at 3501 Mt Vernon to right-turn only\*
- Close southernmost driveway at 3501 Mt Vernon\*



# Glebe Road

*Design Option 1 of 3 (Not Recommended)*



- Curb extensions and medians
- Restrict right turns from Mt Vernon Ave onto Glebe Rd



# Glebe Road

## *Design Option 3 of 3 (Not Recommended)*



- Skewed intersection separated into two distinct signalized intersections
- Medians at select approaches
- More crossing opportunities
- Tighter corner radii
- Opportunity for green space

# Traffic Summary

**At Four Mile Road, Executive Avenue, and Russell Road, no significant traffic impacts are expected**

**At Glebe Road, longer queues are expected, but movement will be continuous, resulting in a slight reduction in overall intersection delay**

# Outreach

**Mount Vernon Avenue North  
COMPLETE STREETS PROJECT**

**PROYECTO CALLES COMPLETAS  
del norte de la avenida  
Mount Vernon**




The City wants to know what you think about **safety improvements** at intersections along **Mount Vernon Avenue**.

La ciudad quiere saber lo que piensas sobre **las mejoras de seguridad** en las intersecciones a lo largo de **la avenida Mount Vernon**.

**Tell us what you think!  
¡Dinos lo que piensas!**

**ONLINE / EN LÍNEA**  
May 2 - June 5  
alexandriava.gov/116920 or scan this QR code / o escanear el código QR:

**IN PERSON / EN PERSONA**  
May 19 • 7 p.m. - 8:30 p.m.  
Chick Armstrong Recreation Center



For more info / Para más información: [alexandriava.gov/CompleteStreets](https://alexandriava.gov/CompleteStreets)

## Community Outreach, Spring 2022

- Project webpage
- Direct stakeholder communication
- Posters in project area
- eNews announcement
- Social media
- Online feedback form
- In-person public meeting
- Bilingual outreach materials
- Traffic & Parking Board update, June 2022

## Property Owner & Stakeholder Engagement, 2022-2023

- Regular meetings & feedback sessions
- Concept refinement

# Outreach

## How Important are the Following Goals?

*Based on 235 responses*

Improve Safety for People Walking

**85%** said Very Important or Extremely Important

Reduce Vehicle Speeds

**55%** said Very Important or Extremely Important

Minimize Risk of Crashes

**75%** said Very Important or Extremely Important

Make Bus Stops More Comfortable & Easier to Get To

**47%** said Very Important or Extremely Important

Preserve Parking

**18%** said Very Important or Extremely Important

# Outreach

## Support from:

- *Presidential Greens Condominiums*
- *3501/3507 Mount Vernon Avenue & 121 West Glebe Road*
- *Alexandria Families for Safe Streets*

| Location         | Design Option   | Community Rating (1-5) |
|------------------|-----------------|------------------------|
| Four Mile Road   | <b>Option 1</b> | <b>3.4</b>             |
| Executive Avenue | <b>Option 1</b> | <b>3.8</b>             |
| Russell Road     | <b>Option 1</b> | <b>3.6</b>             |
|                  | Option 2        | 3.0                    |
| Glebe Road       | Option 1        | 2.9                    |
|                  | <b>Option 2</b> | <b>3.4</b>             |
|                  | Option 3        | 2.8                    |

# Recommendation

**The Director of T&ES implement the following traffic and parking changes:**

- Mt Vernon Ave & Four Mile Rd: Option 1
- Mt Vernon Ave & Executive Ave: Option 1
- Mt Vernon Ave & Russell Rd: Option 1
- Mt Vernon Ave & W Glebe Rd: Option 2

# Glebe Road/Montrose Avenue/Ashby Street Intersection and Conversion of Ashby Street to One-Way Westbound

---

Agenda Item 8

Presenter: Alex Carroll



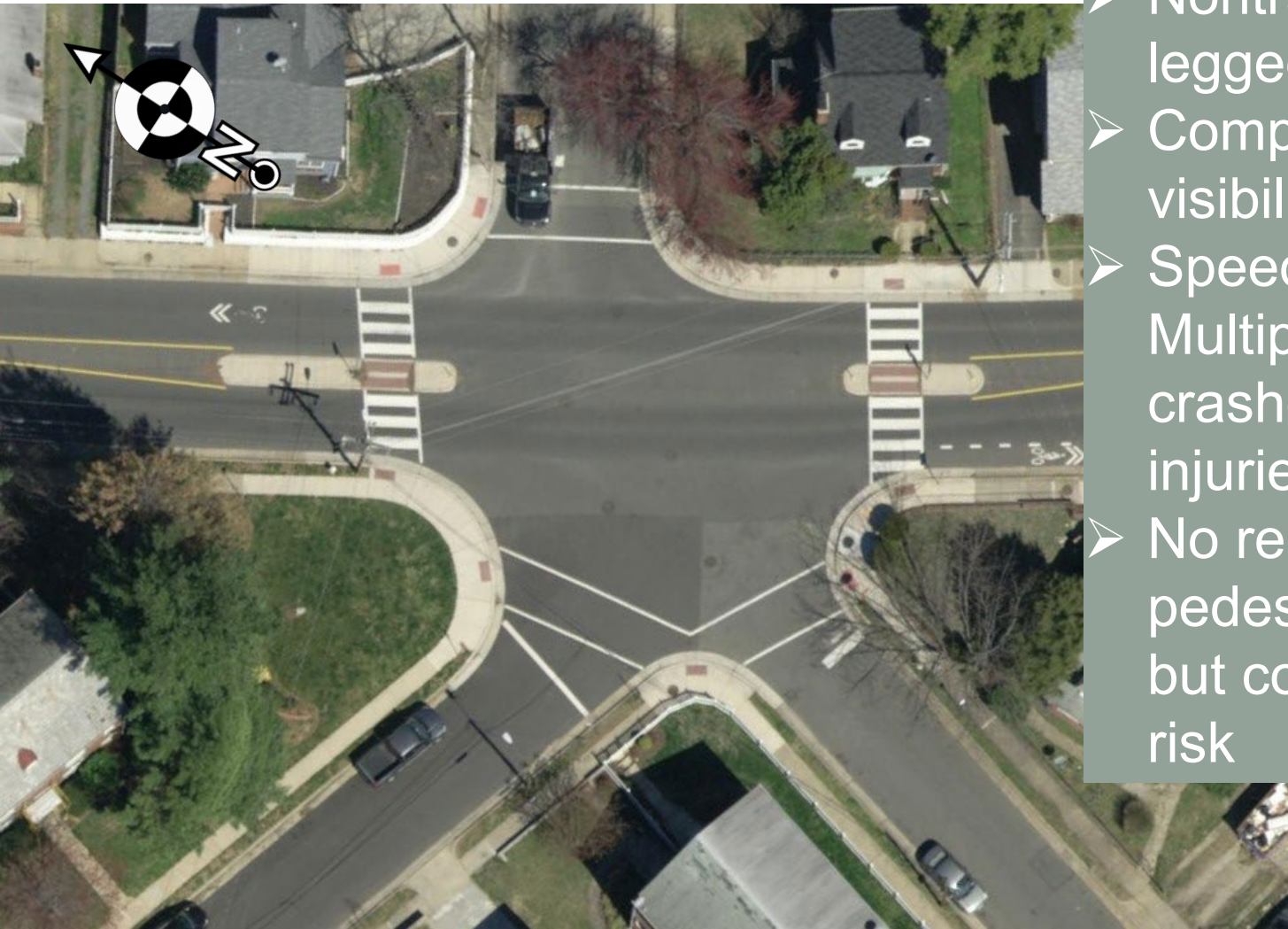
# Background

- Vision Zero Action Plan
- Commonwealth/Ashby/Glebe Stormwater Capacity Project
- Past community concerns about intersection safety





# Project Location + Existing Conditions



- Nontraditional, five-legged intersection
- Complexity and visibility issues
- Speeding on E Glebe  
Multiple angle crashes resulting in injuries
- No reported pedestrian crashes, but concerns about risk

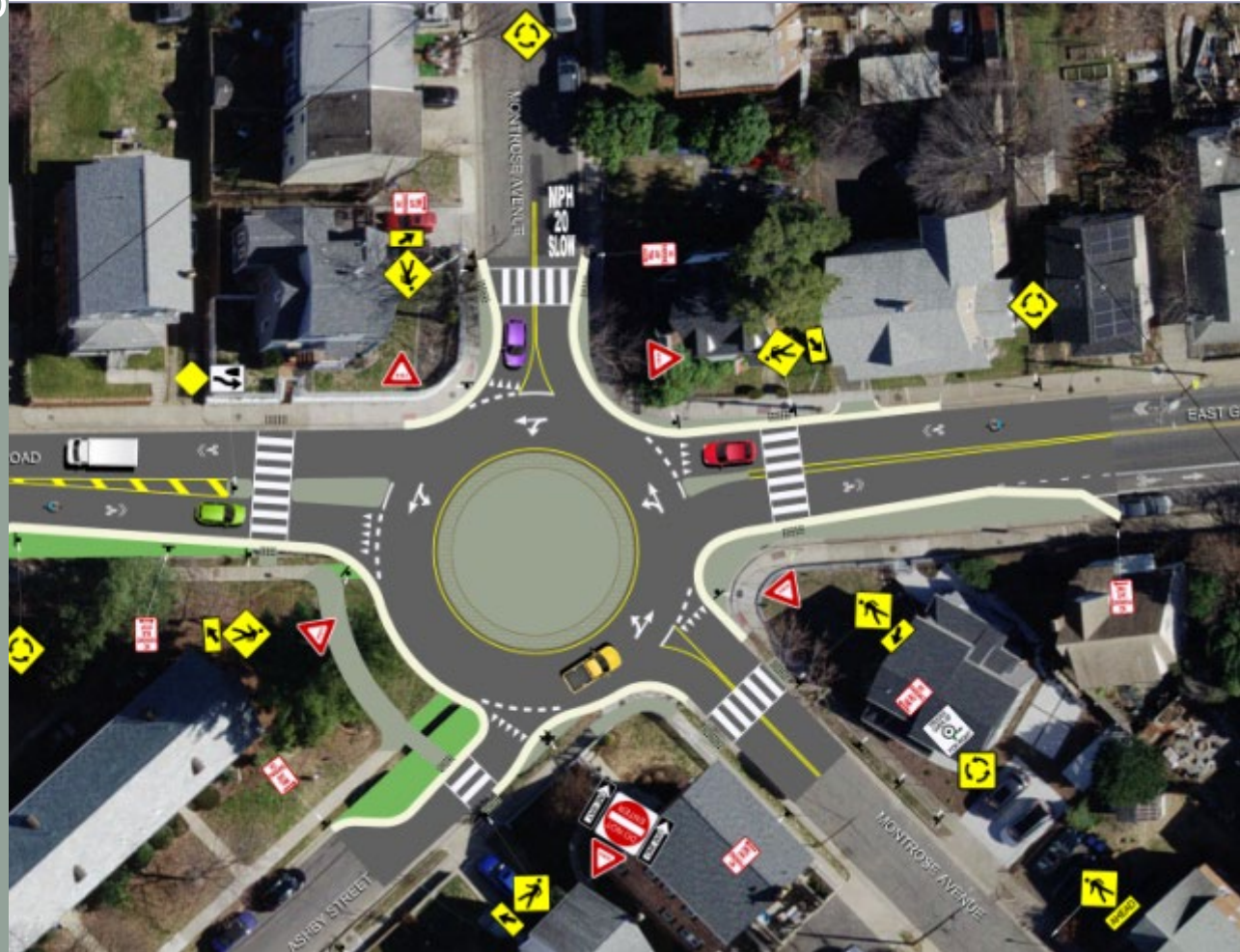
# Design Option 2: Roundabout (Recommended)

## Summary

- Replaces partial stop control with a roundabout
- Slower speeds, shorter crossings, improved sightlines

## Considerations

- Reduces median refuge on Glebe
- Bike lane is not continuous
- Removes some on-street parking
- Would require purchase of right-of-way



# Option 1: Curb Extensions (Not Recommended)

## Summary

- Replaces the medians with curb extensions
- Two-stage stop for Ashby Street

## Considerations

- Removes two-stage crossing on Glebe Road
- Removes some on-street parking
- Operations may still be somewhat confusing



# Performance Summary

| Performance Metric                                      | Existing<br>(No Build) | Curb Extensions  | Roundabout   |
|---|------------------------|--|--|
| Number of Approaches with Insufficient Sight Distance   | 3 of 5 approaches      | 1.5 of 5 approaches  | 1 of 5 approaches  |
| Number of Vehicular Conflict Points                     | 56                     | 38   | 9  |
| Average Pedestrian Crossing Distance                    | 30'                    | 23'  | 22'  |
| Continuous Bicycle Lane                                 | No                     | Yes  | No   |
| Potential for 2 ADA Bus Stops (Westbound and Eastbound) | No                     | Yes  | Yes  |
| Parking Impacts   | 0 spaces               | 3 spaces: <ul style="list-style-type: none"> <li>• Ashby St (1)</li> <li>• Montrose Ave (2)</li> </ul> | 4 spaces: <ul style="list-style-type: none"> <li>• Ashby St (2)</li> <li>• Montrose Ave (2)</li> </ul> |

# Ashby Street Reversal

## Existing



## Proposed



# Outreach

Outreach performed via:

- ✓ Flyers mailed to residents
- ✓ Signs in project area
- ✓ Direct communication with Auburn Village Condo Association, Del Ray Civic Association, and Lynhaven Civic Association
- ✓ Online feedback form
- ✓ Community meeting

## Glebe/Montrose/Ashby Intersection Improvements






The City of Alexandria is exploring traffic safety improvements at the Glebe/Montrose/Ashby intersection and on Ashby Street.



**Tell us what you think!**



**VIRTUAL MEETING**  
December 14 | 7 p.m.  
Visit [alexandriava.gov/go/5105](http://alexandriava.gov/go/5105) for Zoom meeting details

**ONLINE FEEDBACK**  
December 4-22  
[research.net11/AlexandriaVA-GlebeMontroseAshby](https://research.net11/AlexandriaVA-GlebeMontroseAshby)  
Or scan the QR code!

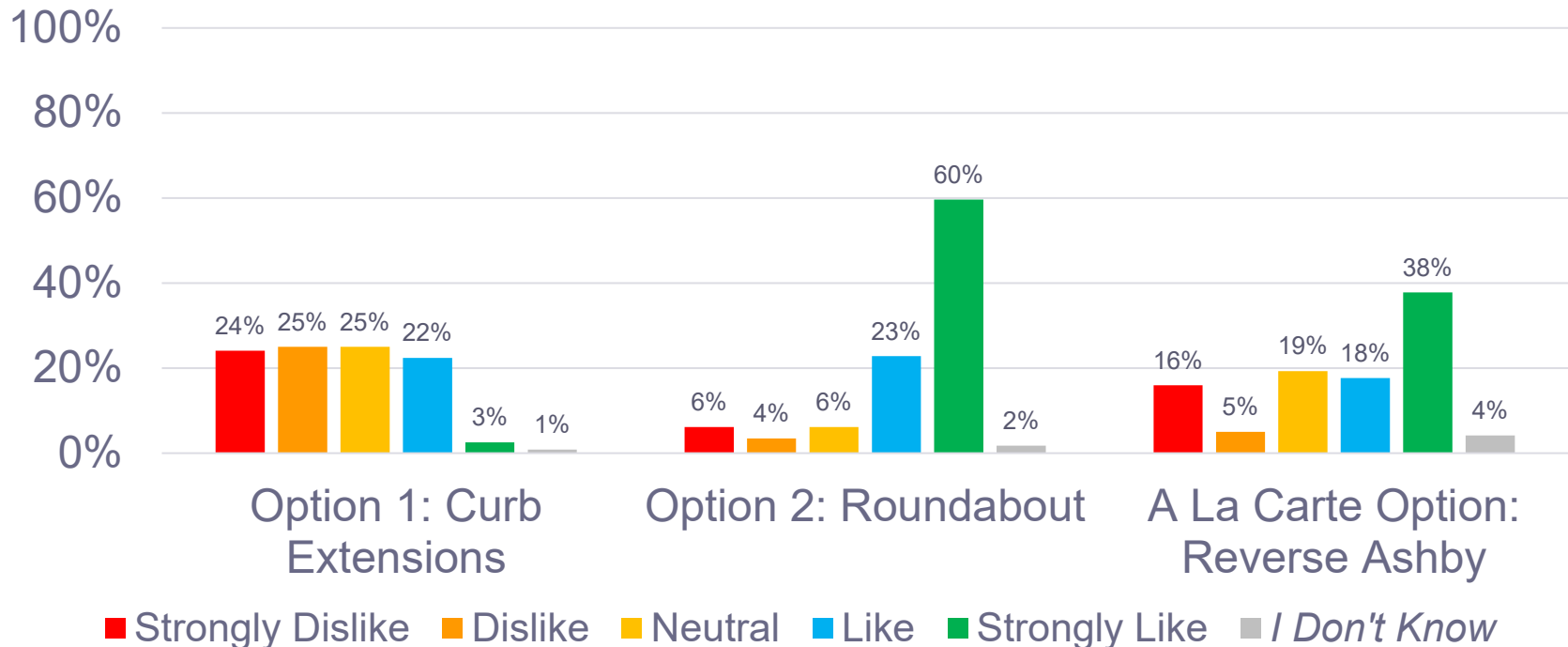
To learn more, visit the project webpage, [alexandriava.gov/go/5105](http://alexandriava.gov/go/5105).

# Outreach

- Letters of support from:**
- Auburn Village Condo Association
  - Lynhaven Civic Association

## Responses to Design Options

*n=120*



# Recommendation

## Recommend the Director of T&ES:

- Remove stop signs and install a roundabout at the intersection of Glebe Road/Montrose Avenue/Ashby Street
- Remove 4 parking spaces at the intersection of Glebe Road/Montrose Avenue/Ashby Street
- Convert Ashby Street from one-way eastbound to one-way westbound



# King-Bradlee Project Update

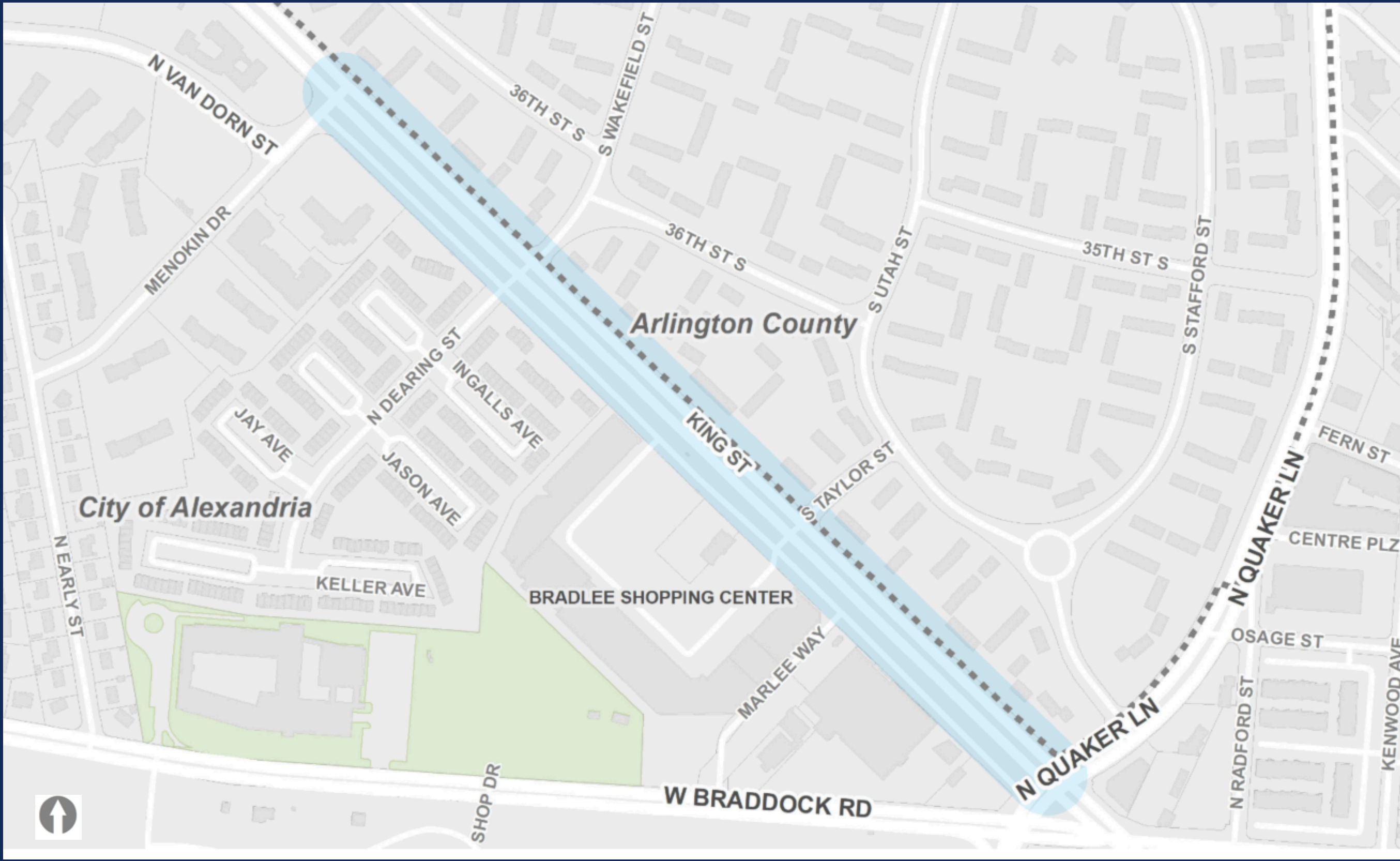
---

Staff Update

Presenter: Sara Brandt-Vorel



# Project Location



Legend / Guía

- County Boundary / Límite del Condado
- Study Corridor / Corredor del Estudio
- Open Space / Espacio Abierto

# Project Goals

Improve mobility, safety, and access for all roadway users of all ages, abilities and modes of travel.

Install safer pedestrian access and bicycle facilities to connect to surrounding network.

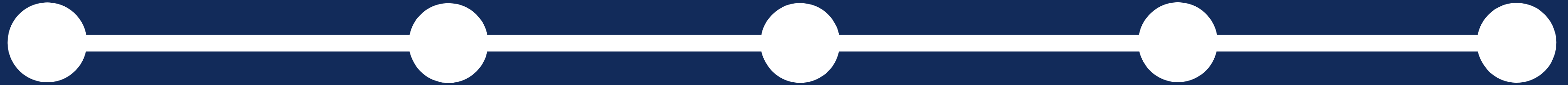
Maintain or enhance existing transit facilities.

Improve existing stormwater treatment.



# Project Timeline

We Are  
HERE



## Project Initiation

- Data Gathering
- Staff Analysis

## Issue Identification

- Phase 1 community engagement
- Design Team Hired
- Data Analysis

## Concept Development

- Initial Concept Development
- Phase 2 community engagement
- Data Analysis

## Concept Refinement

- Continued Analysis
- Phase 3 community engagement
- Concept Selection
- Short-Term Improvements

## Seek Construction Funding

- Identify applicable funding sources and prepare applications

Summer 2023

Fall 2023

Winter 2024

Spring 2024

Summer 2024



# Community Engagement

## 2 Feedback Forms

Over 1,000 interactions



## In Person Events

Pop-Ups, Community Festival & Bus Stop chats

## 8 Staff Presentations

Meetings with HOA & Civic Associations

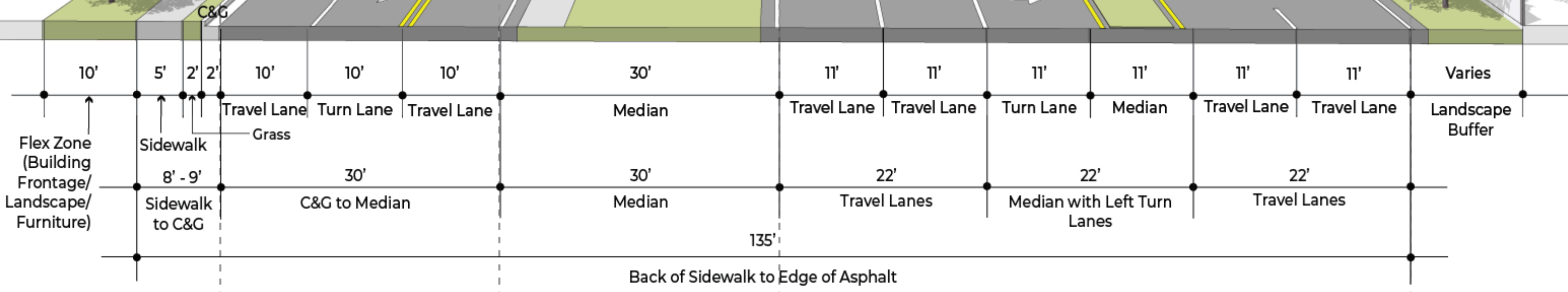
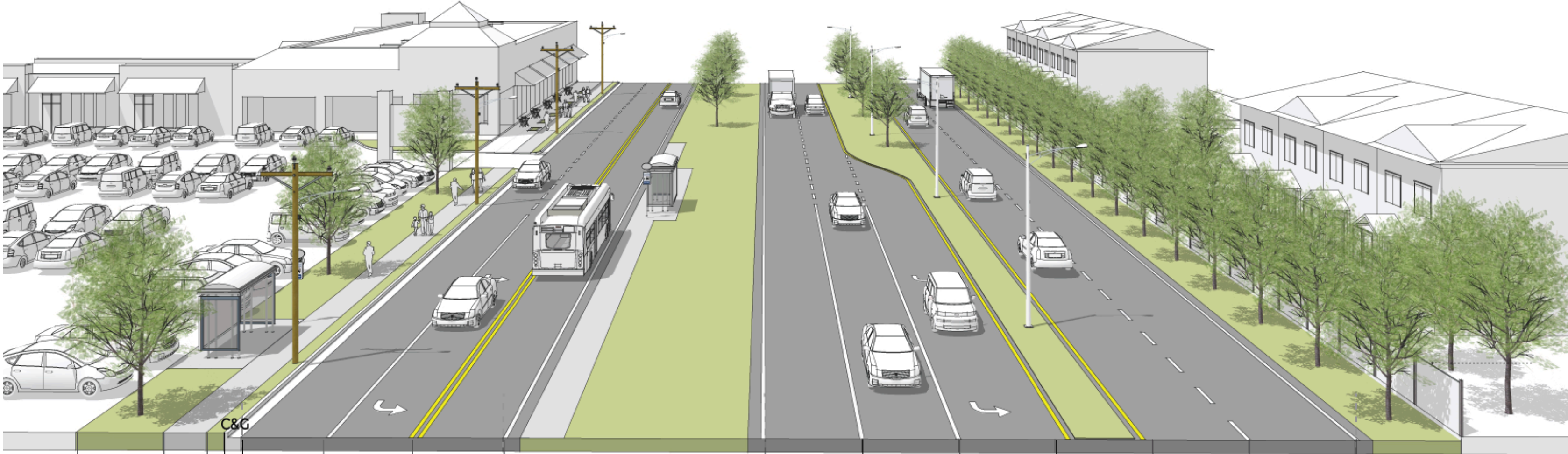
## Digital Engagement

Social Media Posts, direct email notifications, website updates

# Existing Typical Cross -Section

Bradlee Shopping Center

Fairlington



# Alternative 1: Two-Way Traffic with Transit

