



# Stormwater Utility and Flood Mitigation Advisory Committee

May 16, 2024 | 6:00 p.m. | Hybrid (Virtual and In-Person) Meeting

## Minutes

### Advisory Committee Members Present:

A	John Chapman	P	Howard “Skip” Maginniss
P	Dino Drudi	P	Brian Sands
P	John Hill (Chair)	P	Janette Shew
P	Cheryl Leonard	P	Christine Thuot
P	Chris Ferrara	P	Katherine Waynick (Vice-Chair)

### Staff Present:

V	Brian Rahal, T&ES Civil Engineer IV	V	Jessica Lassetter, TES Civil Engineer III
P	Dan Medina, DPI Stormwater Program Manager	P	Jonathan Whiteleather, DPI Technical Project Manager
P	Emma Wheeler, T&ES Communications Office	V	Lisa Jaatinen, TES Civil Engineer IV
V	Erin Bevis-Carver, Sanitary Infrastructure Division Chief	P	Mitch Dillon, DPI Associate Technical Project Manager
V	Felicia Montoney, T&ES Management Analyst I		Terry Suehr, DPI Director
V	Alex Haptemariam, DPI Senior Technical Project Manager	V	Ehsanullah Hayat, TES Project Manager
V	Haweni Gobena, TES Project Manager	V	Wael Eltayeb, DPI Technical Project Manager
	Jesse Maines, TES Division Chief, Stormwater Management		

P = Present    A = Absent    V = Virtual (on call)

1. Welcome and Introductions
2. Project updates by City Staff



## Flood Action Progress Report: Large Capacity Projects & CSS

- **Commonwealth/Ashby/Glebe (est. \$50M)** Large capacity flood mitigation. 60% design submission received on 4/25. City team to review. 90% expected Fall 2024. Public Open House on 5/22 will focus on construction impacts. Virtual Open House will be accessible to review materials and make comments. Continued coordination with utilities for relocation.
- **Hooffs Run Culvert Bypass (est. \$60M)** Large capacity flood mitigation. Fieldwork component of field survey along Russell Road is complete. Developed model to investigate possible solutions and determine feasibility. Two flow monitoring sites selected. The data collected will allow improvement of the hydraulic model.
- **Pitt & Gibbon (\$20-25M)** CSO surcharge mitigation. Continued survey collection to perform construction feasibility of preferred alternative. City team reviewing options to increase performance of proposed design (most likely in the form of second phase of construction). Current alternative does limit the flooding during 10-year storm, but City aims to increase level of service.
- **Nethergate (\$5M)** CSO Surcharge mitigation. Alternatives analysis complete. City collecting additional information on sump pump discharge locations prior to issuing design contract. Flooding seems to occur in basements, where sump pumps cannot discharge or are backing up. This information is critical to determine success of planned project.

A new dashboard showing progress was presented to the Ad Hoc Advisory Group, as shown below.

## Flood Action Progress Report: Updates to Stormwater Program Schedule



### Hume Ave Stormdrain Bypass

#### Project Webpage

<https://www.alexandriava.gov/tes/hume-avenue-bypass-project>

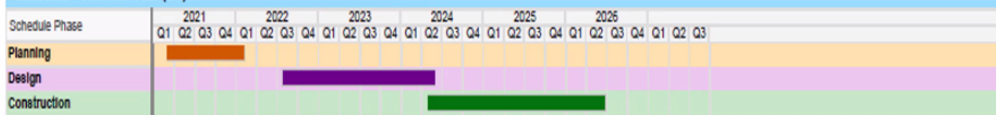
#### Project Description

The Hume Avenue Storm Sewer Bypass Project will install storm sewer and inlets along the 100 block of Hume Avenue and E. Raymond Avenue. The addition of a new utility within each right-of-way requires the relocation of gas, electric, water and sanitary systems. On E. Raymond Avenue the sanitary sewer will be upgraded to a larger pipe in tandem with its re-location. Hume Avenue will be re-built to restore conveyance along the curb and gutter.

#### Project Information

Current Phase: Design  
Total Planned Budget: \$4,587,218.00  
Funding Sources: SWU, ARPA

#### Schedule - Calendar Year (CY)



For more project schedules:

<https://www.alexandriava.gov/FloodAction>

- Nethergate
  - Alternatives Analysis is complete. Collecting more information regarding sump pumps that cannot discharge into storm drain and back up in basements.

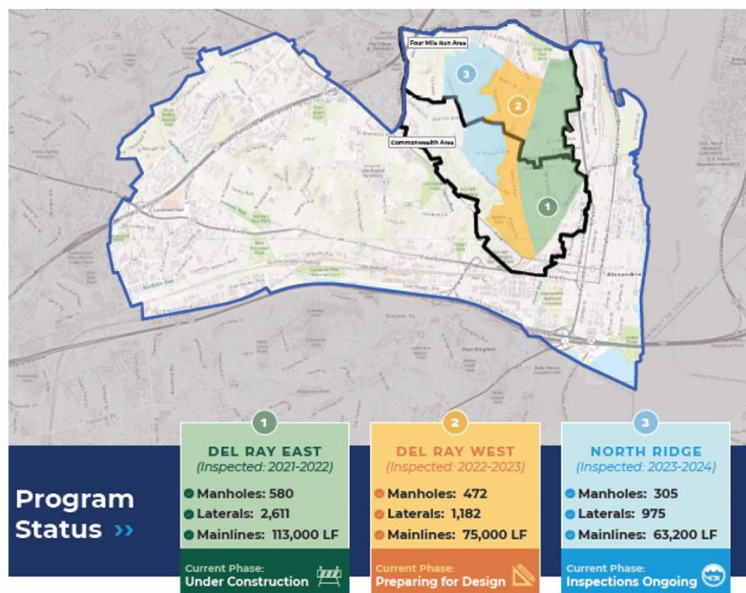


- N. Overlook
  - Construction is underway
- Mitch Dillon
  - Small Project Update
  - Introduced a new tool that provides update to small projects.
    - 4300 Loyola Ave
    - Hume Ave Stormdrain Bypass
    - Project schedules are available at
      - <https://www.alexandriava.gov/FloodAction>
- Erin Bevis-Carver
  - Provided updates to the sanitary sewer rehabilitation work
    - Approximately 75% completed. This includes 150 pipe segments, 111 manhole, lateral sewers under a separate contract.

## Sanitary Sewer Asset Renewal Program

### • Del Ray East Sewer Rehabilitation:

- Contractor issued Notice to Proceed Oct 16, 2023
  - Contract period = 1 year
- Construction about 75% completed
  - 150 pipe segments
  - 111 manholes
  - Lateral sewers under separate contract





Communications update- Emma Wheeler

## Communications

- 11 Total Flood Action/ Stormwater social media posts in April.
- Impressions decreased by 6.5%. (49,452)
- Engagement decreased by 3.2%. (1,828)
- Post link clicks increased by 13.6% (225)
- 3,644 Stormwater Management webpage views
- Average web user engagement is 34:41
- Most popular stormwater webpages:
  - Flood map= 486 views
  - Flood Action = 318 views
  - Sanitary Infrastructure = 219

Lisa Jaatinen provided an update on Maintenance Activities

## Maintenance Activities

- **Hooffs Run Culvert Maintenance**
  - Pre and post storm inlet inspections and cleaning ongoing.
  - Sediment removal is being coordinated with AlexRenew.
  - Anticipated to be completed by late Summer 2024.
  - Working with consultant on structural repair package.
- **Linden Street Alley Storm Sewer Project:**
  - Meeting with contractor on Monday, 5/20/2024 to discuss the scope of work.
- Linden Street project is at the end of the Hooffs Run culvert and will remove sediment to increase capacity.



- One of the main concerns is that the alley-way is higher than the backyards. This area floods very quickly.
  - This project will not address the issue of flooding in the backyards
- Most floods occur in the summer. There was a concern that the work won't be accomplished before the summer floods.
- Sediment removal won't increase the flood. Plan is to implement the sediment removal project as quickly as possible
- Limits will be from Linden to Braddock

### **Meeting Minutes Approval**

- Edits: Need to update the March Meeting to include the Absent-A, Virtual-V, P-Present
- Erin B-C needs to be spelled out with Erin Bevis-Carver
- Milestone- NTP needs to be spelled out
- I&I needs to be spelled
- Bottom of page 4 change Environmental Protection Commission to Environmental Policy Commission

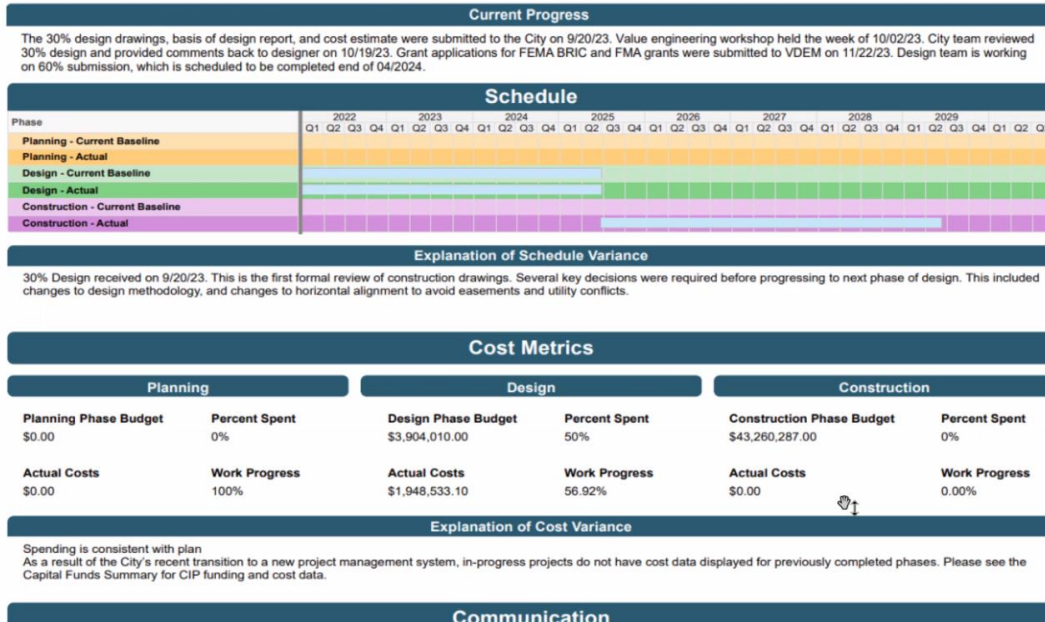
Motion to approve the past meeting minutes with the proposed changes. Motion made and seconded, Meeting Minutes approved as amended as noted above.

## **Update on FY2025 budget**

AGENDA ITEM #4



## Commonwealth/Ashby/Glebe Project (from 'Capital Projects Status Report FY2024-Q2', March 2024)



It was noted that the blue in the schedule is hard to distinguish between the other colors.

Discussion about the open-house in May for Commonwealth/Ashby/Glebe project

Focus of the open-house is to provide residents with how construction will occur in 7 areas and the sequence of construction

Sample posters were presented to the group and the content being shown at the open house.



**How to Navigate this Open House**

- Find the project areas that interest you most and go to those posters for more information
- Construction will be completed in phases; the sequencing and duration of these construction phases are subject to change



- The existing storm sewer is too small to handle stormwater from intense storms
- Increased flooding is a result of old infrastructure, design criteria at the time of construction, and climate change



**What is the Solution?**



A new and larger-capacity storm sewer will provide an additional route for stormwater to drain. This extra capacity will relieve the existing pipe and mitigate flooding on the road.



# Area 1: Outfall



### Description of Work

- ▶ New outfall to Four Mile Run - 20' x 40' concrete structure to be installed along the bank of Four Mile Run
- ▶ Two 8' x 9' box culverts to be installed (largest in the project)
- ▶ Cul-de-sac to be replaced with a gravel road to allow for future upgrade of Four Mile Run Park
- ▶ Construction Technique: Micropiles to be used in soft soils will also reduce noise, vibration and dust

### Construction Impacts

### Estimated Duration of Construction



### Traffic Management During Construction

Then a breakdown/blow up of each area of construction. Main intent was to communicate the area of work for drivers and pedestrians can visualize.

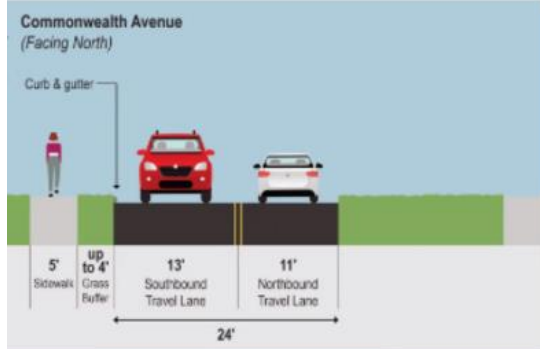




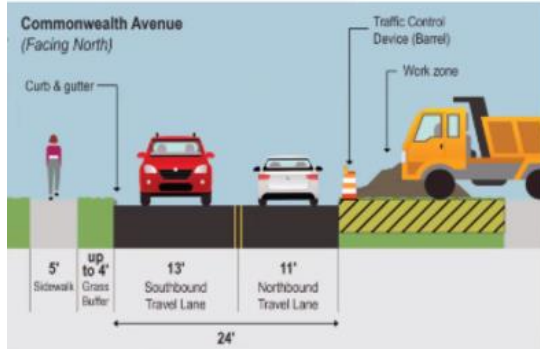
### Management During Construction

traffic will remain on Commonwealth Ave  
ic along Commonwealth Ave will continue to share the lane with  
no change  
nstruction crosses E Reed Ave, the east leg of the Commonwealth Ave  
J Ave intersection will be closed and traffic will be detoured  
k Drive access will be closed for up to 90 days

#### lanes Now



#### lanes During Construction



One major point the City wants to convey to the public is how construction is going to impact roads for drivers and pedestrians.



- ▶ Two 8' x 7' box culverts to be installed on the east side of Commonwealth Ave
- ▶ Construction Technique: Deep foundation and micropiles to be used north of the school property

### Estimated Duration of Construction



### Construction Impacts

- Vehicle access to school – will be maintained
- Bike and pedestrian access to school and recreational center – will be maintained
- Pedestrians – will be routed to the west side of the Commonwealth/Reed intersection
- Parking – two small parking lots on the east side of Commonwealth Ave north of Reed Ave (overflow parking for the school) will be closed during construction. The Four Mile Run Park parking area will be used during this phase of construction.

### Traffic Management During Construction

- ▶ Two-way traffic will remain on Commonwealth Ave
- ▶ Bike traffic along Commonwealth Ave will continue to share the lane with vehicles; no change
- ▶ When construction crosses E Reed Ave, the east leg of the Commonwealth Ave and Reed Ave intersection will be closed and traffic will be detoured
- ▶ Luna Park Drive access will be closed for up to 90 days

Travel Lanes Now



A major objective is to maintain access to Cora Kelly Elementary School

Suggestion was made to show existing conditions and proposed conditions with a rendering.

Will the graphics be available online?

A: Yes.

Jon Whiteleather presented an image showing how the virtual open house is going to look like.



How can the committee help the City with the open house?

- Comment was made that there is a concern that the meeting location will not big enough to handle all the public attendees.
- Committee is volunteering to forward any social media posts from the City and share any materials made available ahead of the meeting.
- Committee will communicate via neighborhood newsletters

There will be multiple public meetings. Project is at 60% now. Another meeting for the public to be at 90%, which will be in the Fall.

Katie Waynick presented a FEMA CRS repetitive loss letter with an invitation to participate in the program. Any property that has losses/claims more than \$10,000 multiple times within a 10-year period is eligible for this grant.

- What is the implication to join the program?
  - Brian Rahal: The City could get CRS points, which in turn could provide lower flood insurance premiums.
- Will the City claims for reimbursement of flooding damage be used by the City to submit for the CRS?
  - Brian Rahal: No

### Public Comment

Resident says he had to move out of his house, while a contractor is fixes flood damage. He lives in a townhouse and hired a contractor to implement floodproofing measures. He now has 3 sump pumps, and had concrete walls poured. All these improvements are to reduce the risk of future flooding.



Jennifer Debias- She will be the point of contact with the EPC (Environmental Policy Commission). She will share the information at the next EPC meeting and assist with communicating about upcoming meetings.

Next meeting will be in September.

Motion to adjourn was moved and seconded. Vote was unanimously approved.

Meeting adjourned at 8:15pm