

LOC/DME I-VVWH <b>108.5</b> Chan <b>22</b>	APP CRS <b>147°</b>	Rwy Idg <b>6869</b> TDZE <b>13</b> Apt Elev <b>14</b>
--	------------------------	---

# LDA Z RWY 19

## RONALD REAGAN WASHINGTON NTL (DCA)

**⚠** Inop table does not apply. Circling NA northeast of Rwy 15-33. Rwy 19 helicopter visibility reduction below 1 SM NA. DME required.

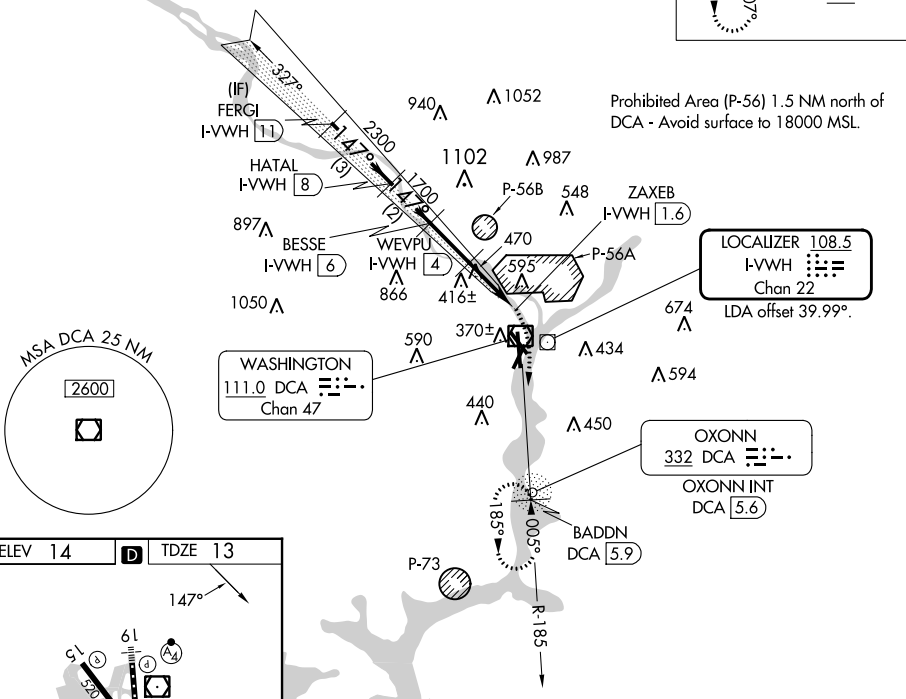
**MALSF**  
MISSED APPROACH: Climbing right turn to 3000 on DCA VOR/DME R-185 to BADDN/DCA VOR/DME 5.9 DME and hold, continue climb-in-hold to 3000.

D-ATIS <b>132.65</b>	POTOMAC APP CON <b>119.85 239.25 360.8</b> (WEST/SOUTH) (EAST)	WASHINGTON TOWER <b>119.1 257.6</b>	GND CON <b>121.7 257.6</b>	CLNC DEL <b>128.25</b>	CPDLC
-------------------------	---	--	-------------------------------	---------------------------	-------

ALTERNATE MISSED APCH FIX



### RADAR REQUIRED

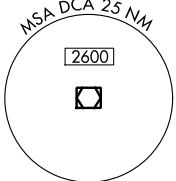


Prohibited Area (P-56) 1.5 NM north of DCA - Avoid surface to 18000 MSL.

**LOCALIZER 108.5**  
I-VVWH  
Chan 22  
LDA offset 39.99°.

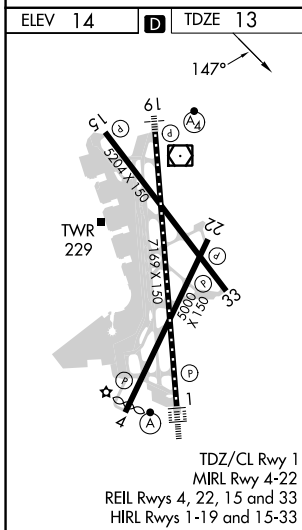
**WASHINGTON 111.0 DCA**  
Chan 47

**OXONN 332 DCA**  
OXONN INT DCA 5.6



NE-3, 16 MAY 2024 to 13 JUN 2024

NE-3, 16 MAY 2024 to 13 JUN 2024



	FERG1 I-VVWH 11	HATAL I-VVWH 8	BESSE I-VVWH 6	WEVPU I-VVWH 4	ZAXEB I-VVWH 1.6	3000	BADDN DCA 5.9
	3000	2300	1700	1100			
	3 NM	2 NM	2 NM	2.4 NM	0.8		
CATEGORY	A		B		C		D
S-19	720/55		707 (800-1)		720-2		707 (800-2)
<b>C</b> CIRCLING	720-1		706 (800-1)		840-1½		900-3
					826 (900-1½)		886 (900-3)