

## Pwotokòl E-collar

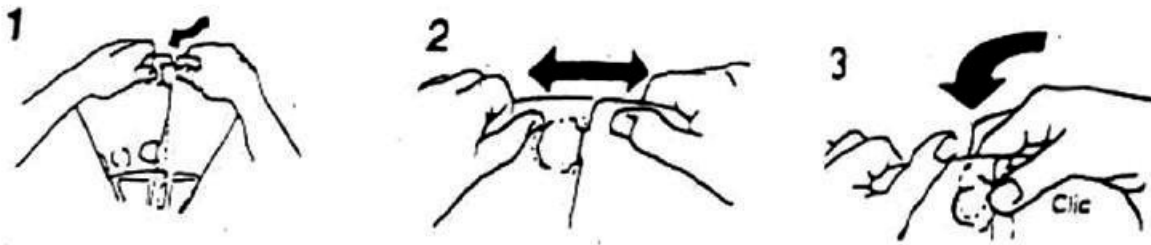
**Bèt domestik mwen parèt mizerab ak E-collar la nan kou li. Silvouplè, èske mwen kapab retire li annik pou yon ti tan?**

Li pi bon pou mete E-collar la epi kite li nan kou li pou 7a 10 jou konplè. Nan kòmansman bèt domestik ou an p ap renmen E-collar la, men li p ap renmen li pi plis si kote blesi a ye a pandan l ap niche li fè li mal anpil. Menm si liniche li yon ti kras sa kapab lakòz pwoblèm.

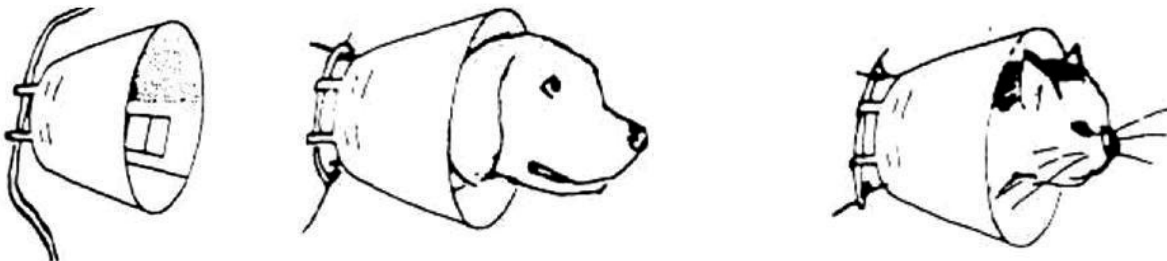
Siveye bèt domestik ou an avèk anpil atansyon pou wè si li kapab manje ak bwè ak E-collar la nan kou li. Si li pa kapab, y ap gen pou retire kolye a konsa bèt domestik ou a kapab manje ak bwè. Dòdinè, bèt domestik yo vin abitye ak E-collar la aprè yon ti kras tan.

**Kijan m kapab monte E-collar la?**

Dòdinè yo monte epi yo mete E-collar bèt domestik ou an nan moman l ap sòti nan Klinik Mobil Esterilizasyon/Chatrea. Sepandan, yo kapab gen pou ajiste dimansyon E-collar la. Yo kapab fè sa a pandan y ap deklipse kouwa yo, ranje kolye a nan yon dimansyon bèt domestik ou a santi li alèz epi klipse kouwa yo ankò.



Anba la se foto sou kijan E-collar la byenmonte epi kijan li ta dwe parèt lè yon chyen oswa yon chat genyen li nan kou li:



**Chat mwen an rayi E-collar la epi li toujou ap retire li nan kou li. Kisa mwen kapab fè?**

Pou asire w bèt ou an pa kapab retire E-collar la, itilize twal gaz woule, kòd, oswa lòt materyèl pwès ki sanble ak yon riban (pinga w itilize yon fisèl oswa lasèt soulye!) pou mare E-collar la nan kou bèt domestik la. Pase materyèl la nan ne ki nan pi piti pwent E-collar la epi mare li nan kou a avèk espas pou de (2) dwèt pase fasilman konsa bèt domestik la kapab respire epi santi li alèz.

Si bèt la pa vle pote E-collar la ditou, gen sibstans (tankou: Pwoteksyon pou evite Niche ak Pòm Anmè) ou kapab aplike TOUTOTOU kote ki blese a pou detounen atansyon bèt domestik la pou li pa niche pati a.

## The E-Collar Protocol

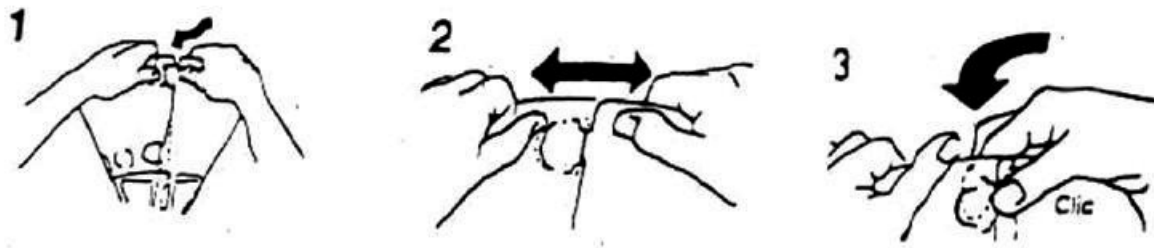
### **My pet looks so miserable with the E-collar on. Can I please take it off, just for a little while?**

It's best to put the E-collar on and leave it on for the full seven to 10 days. Your pet will not like the E-collar at first, but he or she will like it a lot less if licking at the incision site causes a painful infection. Even a little licking could cause problems.

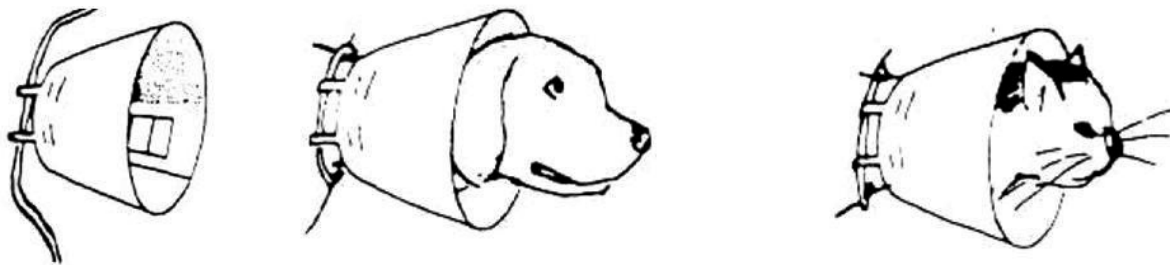
Monitor your pet carefully to ensure that he or she is able to eat and drink with the E-collar on. If not, the collar will need to be removed so that your pet can eat and drink. Usually, pets grow accustomed to wearing the E-collar after a short time.

### **How do I assemble the E-collar?**

Your pet's E-collar is usually assembled and placed on the animal at the time of discharge from the Mobile Spay/Neuter Clinic. However, the size of the E-collar may need to be adjusted. This can be done by unclipping the straps, fitting it to an appropriate size for your pet and re-clipping the straps.



Below are pictures of the E-collar properly assembled and how the E-collar should look when worn by a dog or cat:



### **My cat hates the E-collar and keeps pulling it off. What can I do?**

To ensure that an animal cannot remove the E-collar, use rolled gauze, rope, or some other thick ribbon-like material (do not use thin string or a shoelace!) to tie the E-collar around the pet's neck. Slip the material through the loops on the smaller end of the E-collar and tie around the neck with enough space to easily fit two fingers under the material so that the pet can breathe and be comfortable.

If the animal will absolutely not wear the E-collar, there are substances (examples: Lick Guard and Bitter Apple) that can be applied AROUND the incision site to dissuade the pet from licking the area.