

NEWS RELEASE

BUREAU OF LABOR STATISTICS
U. S. D E P A R T M E N T O F L A B O R



Transmission of material in this release is embargoed until
8:30 a.m. (ET) Tuesday, July 16, 2024

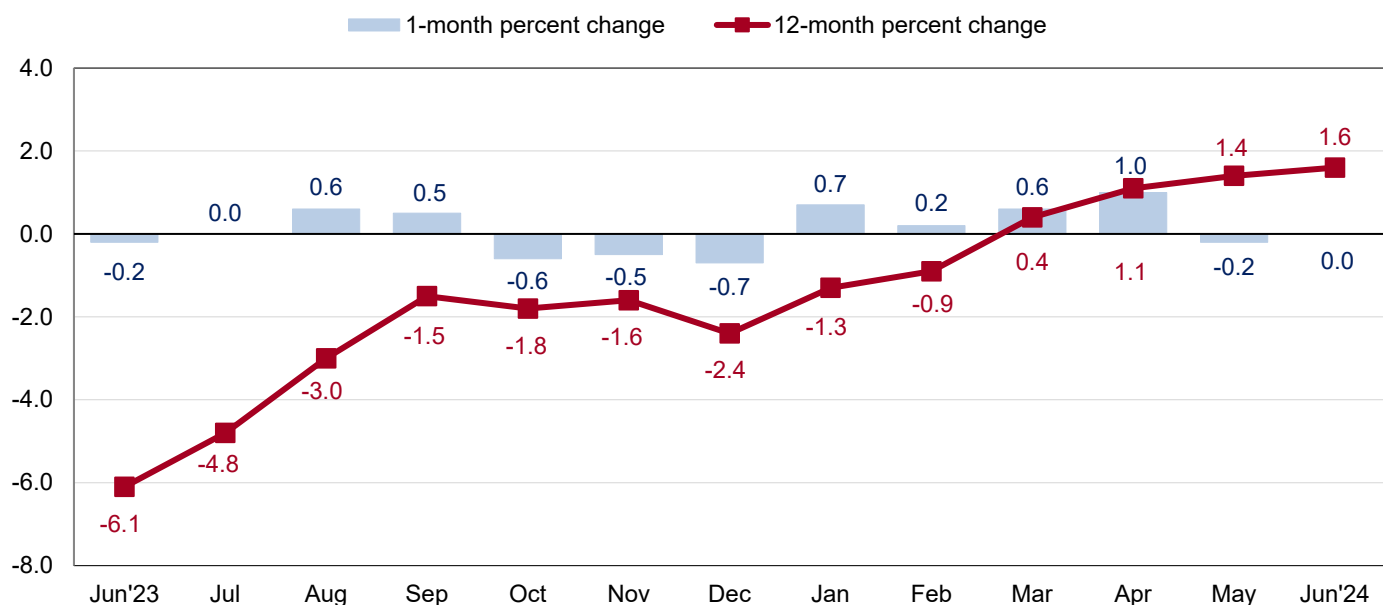
USDL-24-1409

Technical information: (202) 691-7101 • MXPinfo@bls.gov • www.bls.gov/mxp
Media contact: (202) 691-5902 • PressOffice@bls.gov

U.S. IMPORT AND EXPORT PRICE INDEXES – JUNE 2024

U.S. import prices were unchanged in June, after declining 0.2 percent in May, the U.S. Bureau of Labor Statistics reported today. Lower import fuel prices in June offset higher nonfuel prices. Prices for U.S. exports decreased 0.5 percent in June following a 0.7-percent drop the previous month.

Chart 1. One-month and 12-month percent changes in the Import Price Index: June 2023 – June 2024



Imports

The price index for U.S. imports was unchanged in June, after declining 0.2 percent the previous month. The May decrease was the only 1-month decline recorded in the first half of 2024. Prices for U.S. imports advanced 1.6 percent for the year ended in June, the largest 12-month increase since a 3.2-percent rise in December 2022. (See table 1.)

Fuel Imports: Import fuel prices decreased 1.0 percent in June, after increasing 0.4 percent in May. The June decline was the first 1-month drop in import fuel prices since December 2023. Lower prices for both petroleum and natural gas in June led the overall decrease in fuel prices. Prices for import fuel advanced 8.2 percent from June 2023 to June 2024. Import petroleum prices fell for the first time on a monthly basis since December 2023, declining 1.2 percent in June following a 0.7-percent increase in May. Despite the June decrease, import petroleum prices advanced 9.6 percent over the past year. The price index for import natural gas fell 4.5 percent in June, after declining 14.4 percent the previous month. Prices for natural gas have not increased on a monthly basis since November 2023. Natural gas prices declined 37.4 percent for the year ended in June.

All Imports Excluding Fuel: Prices for nonfuel imports increased 0.2 percent in June following a 0.3-percent decline the previous month. Higher prices in June for nonfuel industrial supplies and materials; foods, feeds, and beverages; and automotive vehicles more than offset lower prices for consumer goods. Nonfuel import prices rose 1.0 percent for the year ended in June, the largest over-the-year advance since December 2022.

Foods, Feeds, and Beverages: Import foods, feeds, and beverages prices rose 0.7 percent in June, after declining 1.6 percent in May. Higher prices for vegetables and green coffee in June more than offset lower fruit prices.

Nonfuel Industrial Supplies and Materials: The price index for nonfuel industrial supplies and materials advanced 0.6 percent in June following a 0.6-percent decline the previous month. The June increase was driven by higher prices for both unfinished and finished metals, which rose 1.7 percent and 1.9 percent, respectively.

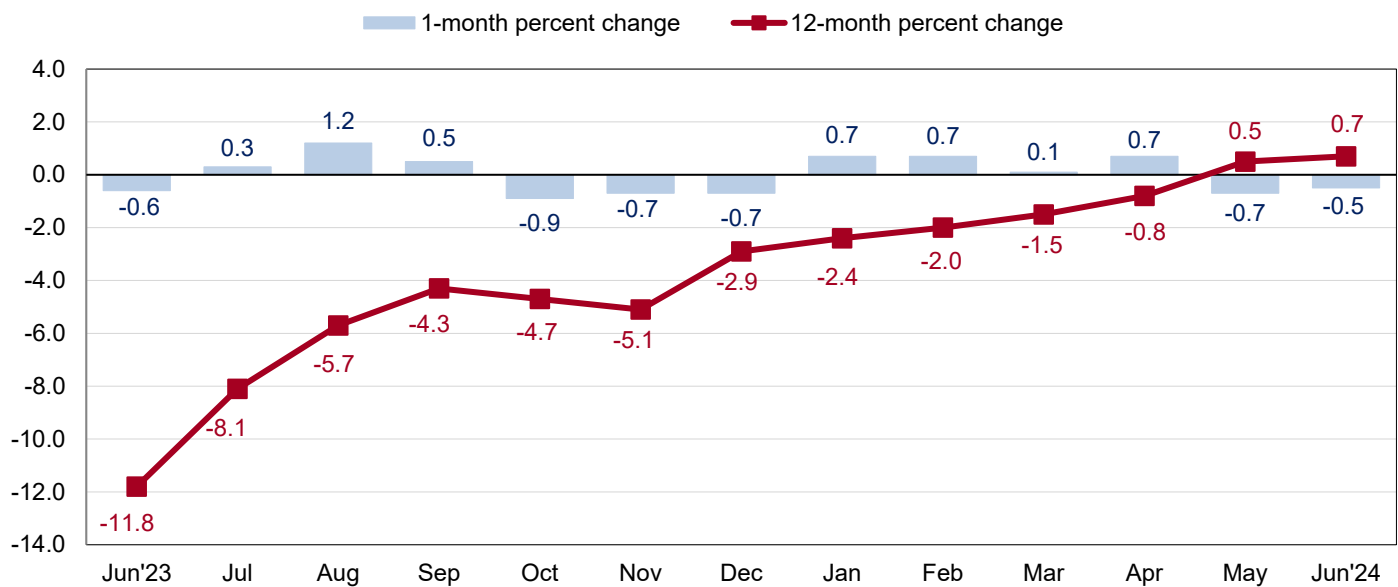
Finished Goods: Prices for the major finished goods import categories were mixed in June. Consumer goods prices edged down 0.1 percent, after rising 0.1 percent in May. Lower prices for nonmanufactured goods in June more than offset higher prices for coins, gems, jewelry, and collectibles and medicinal, dental, and pharmaceutical products. In contrast, prices for automotive vehicles ticked up 0.1 percent in June, after being unchanged the previous month. Capital goods prices were unchanged in June following a 0.2-percent decline in May.

Table A. Percent change in Import and Export Price Indexes, selected categories

Month	IMPORTS			EXPORTS		
	All imports	Fuel imports	Nonfuel imports	All exports	Agricultural exports	Non-agricultural exports
2023						
June.....	-0.2	1.1	-0.3	-0.6	-1.4	-0.5
July.....	0.0	1.2	-0.1	0.3	0.5	0.4
August.....	0.6	8.8	-0.2	1.2	-1.9	1.6
September.....	0.5	6.4	-0.2	0.5	-1.1	0.7
October.....	-0.6	-3.9	-0.2	-0.9	-1.0	-0.9
November.....	-0.5	-6.3	0.1	-0.7	0.0	-0.8
December.....	-0.7	-8.0	0.1	-0.7	-0.3	-0.7
2024						
January.....	0.7	1.7	0.6	0.7	-1.4	0.9
February.....	0.2	1.1	0.1	0.7	0.8	0.7
March.....	0.6	5.0	0.2	0.1	-1.0	0.3
April.....	1.0 ^r	3.9 ^r	0.7	0.7 ^r	-0.4	0.7
May.....	-0.2 ^r	0.4 ^r	-0.3	-0.7 ^r	0.3 ^r	-0.8
June.....	0.0	-1.0	0.2	-0.5	0.6	-0.6
June 2022 to 2023.....	-6.1	-36.8	-1.3	-11.8	-9.6	-12.2
June 2023 to 2024.....	1.6	8.2	1.0	0.7	-4.8	1.4

r Revised

Chart 2. One-month and 12-month percent changes in the Export Price Index: June 2023 – June 2024



Exports

U.S. export prices decreased 0.5 percent in June, after declining 0.7 percent the previous month. The June and May drops were the first 1-month decreases since December 2023. Lower prices for nonagricultural exports in both months more than offset higher agricultural prices. Despite the recent declines, prices for U.S. exports advanced 0.7 percent over the past 12 months. (See table 2.)

Agricultural Exports: The price index for agricultural exports rose 0.6 percent in June following a 0.3-percent increase in May. Higher prices for meat and nuts in June more than offset lower corn and vegetable prices. Despite the recent advances, export agricultural prices fell 4.8 percent over the past year.

All Exports Excluding Agriculture: Prices for nonagricultural exports fell 0.6 percent in June, after decreasing 0.8 percent the previous month. Lower prices for nonagricultural industrial supplies and materials and consumer goods more than offset higher prices for automotive vehicles and nonagricultural foods. In spite of the recent monthly declines, nonagricultural export prices increased 1.4 percent from June 2023 to June 2024.

Nonagricultural Industrial Supplies and Materials: The price index for nonagricultural industrial supplies and materials declined 1.3 percent in June following a 2.1-percent drop in May. Lower prices for fuels and chemicals in June more than offset higher prices for nonferrous metals. Despite the recent decreases, nonagricultural industrial supplies and materials prices increased 1.7 percent over the past year, the largest 12-month advance since a 4.7-percent increase for the year ended December 2022.

Finished Goods: Prices for the major finished goods export categories were mixed in June. Consumer goods prices decreased 0.5 percent, the largest 1-month drop since January 2024. The June decline was led by lower prices for gem diamonds; toys, shooting, and sporting goods; and jewelry. In contrast, prices for automotive vehicles ticked up 0.1 percent for the second consecutive month in June. Export automotive vehicles prices have not declined on a monthly basis since April 2023. Capital goods prices were unchanged in June following a 0.2-percent advance the previous month.

More information for the major import and export price indexes can be found at www.bls.gov/web/ximpim/largest.htm.

Measures of Import and Export Prices by Locality

Imports by Locality of Origin: Prices for imports from China were unchanged for the third time in the past 4 months in June. The price index for imports from China last advanced on a monthly basis in October 2022. Import prices from China declined 1.6 percent for the year ended in June. Prices for imports from Japan decreased 0.2 percent in June, after ticking up 0.1 percent the previous month. The price index for imports from Japan advanced 0.1 percent from June 2023 to June 2024. Import prices from Mexico and Canada both increased in June, rising 0.2 percent and 0.1 percent, respectively. The June advance in prices for imports from Mexico followed a 0.7-percent drop in May and the increase for import prices from Canada followed a 0.2-percent decline in May. The price index for imports from the European Union rose 0.4 percent in June, after advancing 0.2 percent the previous month. (See table 7.)

Exports by Locality of Destination: Export prices to China decreased 0.4 percent in June following a 0.3-percent drop the previous month. The June decline was the largest monthly decrease since January 2024. The price index for exports to China fell 0.4 percent over the past 12 months. In contrast, prices for exports to Japan rose 0.5 percent in June, after declining 0.4 percent in May. Despite the June advance, export prices to Japan decreased 0.6 percent over the past year. The price index for exports to Mexico increased 1.9 percent in June, after falling 1.0 percent in May and rising 2.0 percent in April. Export prices to Canada advanced 0.2 percent in June following no change the previous month. The price index for exports to Canada has not recorded a 1-month decline since January 2024. Export prices to the European Union fell 0.4 percent in June, after decreasing 1.3 percent in May. (See table 8.)

Terms of Trade Indexes: Terms of trade indexes are based on country, region, or grouping and measure the change in the purchasing power of exports relative to imports. U.S. terms of trade with China fell 0.4 percent in June, after declining 0.2 percent the previous month. In spite of the recent declines, U.S. terms of trade with China rose 1.2 percent over the past year, the largest 12-month advance since September 2022. The index for U.S. terms of trade with Japan increased 0.6 percent in June following a 0.4-percent decrease in May. Higher export prices to Japan and lower import prices from Japan contributed to the June advance in U.S. terms of trade with Japan. U.S. terms of trade with Japan fell 0.8 percent over the past 12 months. The indexes for U.S. terms of trade with Mexico and Canada increased in June, advancing 1.7 percent and 0.2 percent, respectively. In contrast, U.S. terms of trade with the European Union declined 0.8 percent in June. (See table 9.)

Import and Export Services

Imports: Import air passenger fares rose 9.0 percent in June, the largest 1-month advance since the index increased 9.9 percent in September 2023. Import air passenger fares have not declined on a monthly basis since January 2024. Higher prices for European, Asian, and Latin American/Caribbean fares all contributed to the June rise. Despite the recent increases, import air passenger fares fell 2.5 percent for the year ended in June. Prices for import air freight rose 2.0 percent in June, after declining 0.7 percent in May. Import air freight prices decreased 1.8 percent over the past year. (See table 10.)

Exports: The index for export air passenger fares advanced 10.6 percent in June, the largest monthly increase since January 2024. Higher European, Latin American/Caribbean, and Asian fares in June all contributed to the rise in export air passenger fares. In spite of the June advance, export air passenger fares fell 1.3 percent over the past 12 months. Export air freight prices declined 0.5 percent in June following a 1.9-percent drop in May and a 2.5-percent decrease in April. Prices for export air freight fell 3.9 percent from June 2023 to June 2024.

U.S. Import and Export Price Index data for July 2024 are scheduled for release on Thursday, August 15, 2024, at 8:30 a.m. (ET).

Table 1. U.S. import price indexes and percent changes for selected categories of goods: June 2023 to June 2024

[2000=100, unless otherwise noted]

Description	End Use	Relative importance May 2024 ¹	Index		Percent change				
			May 2024	Jun. 2024	Annual	Monthly			
					Jun. 2023 to Jun. 2024	Feb. 2024 to Mar. 2024	Mar. 2024 to Apr. 2024	Apr. 2024 to May 2024	May 2024 to Jun. 2024
All commodities		100.000	141.6	141.6	1.6	0.6	1.0	-0.2	0.0
All imports excluding food and fuels (Dec. 2010=100)		84.114	108.8	108.8	0.6	0.0	0.6	-0.1	0.0
All imports excluding petroleum		91.703	124.5	124.7	1.0	0.2	0.6	-0.3	0.2
All imports excluding fuels (Dec. 2001=100)		91.346	128.6	128.8	1.0	0.2	0.7	-0.3	0.2
Foods, feeds, & beverages	0	7.231	221.2	222.8	6.7	1.7	1.3	-1.6	0.7
Agricultural foods, feeds & beverages, excluding distilled beverages.....	00	5.910	249.5	251.4	9.0	2.1	1.6	-1.9	0.8
Nonagricultural foods (fish, distilled beverages).....	01	1.321	152.7	153.4	-2.7	0.3	-0.5	0.0	0.5
Industrial supplies & materials	1	23.540	249.5	249.5	3.1	2.5	3.3	-0.2	0.0
Industrial supplies & materials excluding petroleum.....		15.253	201.2	202.5	-0.1	0.6	2.6	-0.8	0.6
Industrial supplies & materials excluding fuels (Dec. 2001=100).....		14.873	227.5	228.8	0.4	1.1	2.9	-0.6	0.6
Industrial supplies & materials, durable....		9.495	221.4	223.8	1.1	1.2	1.7	0.7	1.1
Industrial supplies & materials nondurable excluding petroleum.....		5.748	177.5	177.5	-1.9	-0.5	4.0	-3.2	0.0
Fuels & lubricants.....	10	8.654	297.9	295.0	8.2	5.0	3.9	0.4	-1.0
Petroleum & petroleum products.....	100	8.297	326.8	323.0	9.6	6.2	4.5	0.7	-1.2
Crude petroleum.....	10000	5.607	332.1	329.9	11.7	5.0	7.1	-1.8	-0.7
Fuels, n.e.s.-coals & gas.....	101	0.206	99.1	105.8	-24.9	-21.3	-9.1	-12.3	6.8
Natural gas.....	10110	0.126	73.3	70.0	-37.4	-29.7	-9.4	-14.4	-4.5
Paper & paper base stocks.....	11	0.533	140.1	141.0	-3.3	-0.6	0.9	1.4	0.6
Materials associated with nondurable supplies & materials.....	12	4.858	198.9	198.1	-0.5	1.2	5.4	-3.3	-0.4
Unfinished metals related to durable goods.....	14	3.528	329.5	335.0	1.3	1.4	2.7	1.9	1.7
Finished metals related to durable goods.....	15	2.677	226.6	230.9	5.5	2.4	2.1	1.3	1.9
Capital goods	2	28.373	93.4	93.4	-0.2	-0.2	0.1	-0.2	0.0
Nonelectrical machinery.....	21	22.435	84.1	84.0	-0.6	0.0	0.0	0.0	-0.1
Transportation equipment excluding motor vehicles (Dec. 2001=100).....	22	1.678	161.6	161.6	5.6	2.0	0.2	0.2	0.0
Automotive vehicles, parts & engines	3	13.542	120.8	120.9	2.5	0.2	0.4	0.0	0.1
Automotive vehicles, parts and engines, 2 digit (Dec. 2023=100).....	30	13.542	101.5	101.5	-	0.2	0.4	0.1	0.0
Consumer goods, excluding automotives	4	27.314	110.9	110.8	0.6	-0.4	0.2	0.1	-0.1
Nondurables, manufactured.....	40	13.716	128.2	128.4	2.3	0.0	0.2	0.0	0.2
Durables, manufactured.....	41	12.614	94.6	94.7	-0.7	-0.2	0.2	0.0	0.1
Nonmanufactured consumer goods.....	42	0.983	125.8	119.1	-5.8	-6.1	-0.2	1.0	-5.3

¹ Relative importance figures are based on 2022 trade values.

NOTES: Data may be revised in each of the 3 months after original publication.

Dash = Not available

Table 2. U.S. export price indexes and percent changes for selected categories of goods: June 2023 to June 2024

[2000=100, unless otherwise noted]

Description	End Use	Relative importance May 2024 ¹	Index		Percent change				
			May 2024	Jun. 2024	Annual Jun. 2023 to Jun. 2024	Monthly			
						Feb. 2024 to Mar. 2024	Mar. 2024 to Apr. 2024	Apr. 2024 to May 2024	May 2024 to Jun. 2024
All commodities		100.000	148.7	148.0	0.7	0.1	0.7	-0.7	-0.5
Agricultural commodities		9.389	226.8	228.2	-4.8	-1.0	-0.4	0.3	0.6
All exports excluding food and fuels (Dec. 2010=100)		75.526	116.0	116.0	1.5	0.4	0.6	0.1	0.0
All exports excluding fuels (June 2022=100)		84.167	100.4	100.4	1.2	0.3	0.6	0.2	0.0
Nonagricultural commodities		90.611	142.6	141.8	1.4	0.3	0.7	-0.8	-0.6
Foods, feeds, & beverages	0	8.641	229.5	231.3	-4.5	-1.2	-0.3	1.0	0.8
Agricultural foods, feeds & beverages, excluding distilled beverages.....	00	8.265	231.7	233.6	-4.4	-1.2	-0.2	1.0	0.8
Nonagricultural foods (fish, distilled beverages).....	01	0.376	187.3	188.7	-6.0	-0.7	-1.6	0.9	0.7
Industrial supplies & materials	1	38.091	198.7	196.2	1.3	0.5	1.2	-2.2	-1.3
Industrial supplies & materials, durable....		11.283	220.4	222.1	4.8	1.1	2.0	1.2	0.8
Industrial supplies & materials, nondurable.....		26.808	188.0	184.0	0.0	0.2	0.9	-3.5	-2.1
Agricultural industrial supplies & materials.....	10	1.123	203.4	201.3	-8.0	0.7	-1.6	-4.1	-1.0
Nonagricultural industrial supplies & materials.....		36.967	198.7	196.1	1.7	0.5	1.3	-2.1	-1.3
Fuels & lubricants.....	11	15.833	232.9	225.6	0.6	-0.3	1.2	-5.1	-3.1
Nonagricultural supplies & materials excluding fuels & building materials.....	12	20.382	198.3	198.6	2.5	1.1	1.4	0.3	0.2
Selected building materials.....	13	0.752	149.9	149.9	2.2	0.9	0.6	-1.0	0.0
Capital goods	2	31.808	123.5	123.5	1.8	0.0	0.4	0.2	0.0
Nonelectrical machinery.....	21	22.662	103.1	103.1	1.7	0.0	0.4	0.3	0.0
Transportation equipment excluding motor vehicles (Dec. 2001=100).....	22	5.623	218.8	218.9	3.7	0.1	0.2	0.0	0.0
Automotive vehicles, parts & engines	3	8.672	128.7	128.8	4.0	0.0	0.7	0.1	0.1
Vehicles-passenger (Dec. 2023=100).....	30	8.672	101.3	101.4	-	0.0	0.8	0.1	0.1
Consumer goods, excluding automotives	4	12.788	118.0	117.4	-2.0	0.4	0.1	0.0	-0.5
Nondurables, manufactured.....	40	6.727	107.1	107.2	-3.4	-0.1	0.0	-0.1	0.1
Durables, manufactured.....	41	4.915	122.4	121.8	1.5	1.3	0.2	0.3	-0.5
Nonmanufactured consumer goods (Dec. 2018=100).....	42	1.146	126.0	121.2	-7.1	-0.2	-0.4	-0.2	-3.8

¹ Relative importance figures are based on 2022 trade values.

NOTES: Data may be revised in each of the 3 months after original publication.

Dash = Not available

Table 3. U.S. import price indexes and percent changes for selected industries: June 2023 to June 2024
 [December 2005=100, unless otherwise noted]

Description	NAICS	Relative importance May 2024 ¹	Index		Percent change				
			May 2024	Jun. 2024	Annual Jun. 2023 to Jun. 2024	Monthly			
						Feb. 2024 to Mar. 2024	Mar. 2024 to Apr. 2024	Apr. 2024 to May 2024	May 2024 to Jun. 2024
Nonmanufacturing		8.279	155.0	154.2	9.8	2.2	4.5	-2.8	-0.5
Agriculture, forestry, fishing and hunting	11	2.172	233.2	233.0	11.5	-0.5	0.5	-4.4	-0.1
Crop production.....	111	1.771	244.0	244.7	13.1	-1.0	0.7	-5.3	0.3
Animal production (Dec. 2022=100).....	112	0.242	121.1	116.0	6.0	2.4	-1.5	0.0	-4.2
Mining	21	6.107	148.7	147.6	8.9	3.2	6.0	-2.2	-0.7
Oil and gas extraction.....	211	5.865	147.2	145.9	9.9	3.2	6.3	-2.3	-0.9
Mining (except oil and gas) (Dec. 2022=100).....	212	0.242	110.4	114.4	-7.4	3.3	-0.8	0.9	3.6
Manufacturing		91.429	123.0	123.1	0.7	0.4	0.5	0.2	0.1
Manufacturing, part 1	31	12.038	141.6	141.9	2.1	0.8	1.8	-0.5	0.2
Food manufacturing.....	311	4.484	197.7	199.0	5.6	2.1	4.8	-1.2	0.7
Beverage and tobacco product manufacturing.....	312	1.167	142.3	141.9	1.4	0.5	0.1	0.0	-0.3
Textile mills (Dec. 2023=100).....	313	0.323	102.1	102.3	–	0.3	1.2	0.1	0.2
Textile product mills (Dec. 2023=100).....	314	0.889	100.2	100.2	–	-0.1	0.0	0.1	0.0
Apparel manufacturing.....	315	3.495	119.0	119.0	0.0	0.0	0.0	-0.1	0.0
Manufacturing, part 2	32	19.098	143.8	143.7	0.1	0.8	0.1	0.8	-0.1
Paper manufacturing.....	322	1.003	122.3	122.8	-1.8	-0.2	0.5	0.7	0.4
Printing and related support activities (Dec. 2023=100).....	323	0.146	100.0	100.7	–	-0.2	-0.1	0.0	0.7
Petroleum and coal products manufacturing.....	324	–	150.3	–	–	9.4	-0.5	7.7	–
Chemical manufacturing.....	325	11.025	151.1	151.6	0.1	-0.3	0.1	-0.1	0.3
Plastics and rubber products manufacturing.....	326	2.530	131.5	131.6	-1.9	-0.2	0.2	-0.2	0.1
Nonmetallic mineral product manufacturing.....	327	1.092	144.8	144.4	-1.5	-0.4	-0.3	0.6	-0.3
Manufacturing, part 3	33	60.293	113.2	113.3	0.5	0.1	0.4	0.1	0.1
Primary metal manufacturing.....	331	4.878	233.9	236.9	5.0	1.5	4.2	2.1	1.3
Fabricated metal product manufacturing... ..	332	3.164	145.2	146.9	-1.5	1.5	-1.5	0.4	1.2
Machinery manufacturing.....	333	7.922	131.8	131.7	-0.1	-0.1	-0.1	-0.2	-0.1
Computer and electronic product manufacturing.....	334	16.399	72.1	72.1	-0.8	-0.1	0.1	-0.1	0.0
Electrical equipment, appliance, and component manufacturing.....	335	6.211	124.9	124.7	-2.4	-1.2	0.2	-0.7	-0.2
Transportation equipment manufacturing..	336	13.988	120.2	120.1	2.7	0.3	0.3	0.1	-0.1
Furniture and related product manufacturing.....	337	1.849	127.8	128.0	-1.1	0.1	-0.2	0.0	0.2
Miscellaneous manufacturing.....	339	5.881	129.8	129.6	1.1	0.2	0.4	0.0	-0.2

¹ Relative importance figures are based on 2022 trade values.

NOTES: Data may be revised in each of the 3 months after original publication.

Dash = Not available

Table 4. U.S. export price indexes and percent changes for selected industries: June 2023 to June 2024
 [December 2005=100, unless otherwise noted]

Description	NAICS	Relative importance May 2024 ¹	Index		Percent change				
			May 2024	Jun. 2024	Annual Jun. 2023 to Jun. 2024	Monthly			
						Feb. 2024 to Mar. 2024	Mar. 2024 to Apr. 2024	Apr. 2024 to May 2024	May 2024 to Jun. 2024
Nonmanufacturing.....		14.150	168.8	167.3	-0.5	-2.4	0.5	-2.6	-0.9
Agriculture, forestry, fishing and hunting.....	11	4.497	184.4	184.3	-9.1	-2.8	-0.1	0.5	-0.1
Crop production.....	111	4.203	194.1	194.0	-9.8	-3.0	0.1	0.8	-0.1
Mining.....	21	9.653	105.9	104.5	4.6	-2.3	0.7	-4.1	-1.3
Oil and gas extraction (Dec. 2021=100)...	211	8.305	93.3	91.7	5.3	-2.6	1.1	-5.3	-1.7
Mining (except oil and gas).....	212	1.348	137.7	139.4	0.9	-0.4	-1.7	3.9	1.2
Manufacturing.....		84.189	134.8	134.3	0.8	0.5	0.7	-0.4	-0.4
Manufacturing, part 1.....	31	6.359	168.9	170.2	-2.2	0.4	-0.7	-0.4	0.8
Food manufacturing.....	311	4.583	199.2	201.9	-1.6	0.7	-0.7	0.1	1.4
Beverage and tobacco product manufacturing.....	312	0.504	134.3	132.3	-8.4	-1.1	-2.1	-2.1	-1.5
Manufacturing, part 2.....	32	25.587	134.1	132.1	-1.6	0.8	0.8	-1.8	-1.5
Wood product manufacturing (Dec. 2017=100).....	321	0.436	121.5	122.0	6.5	1.5	1.1	-1.5	0.4
Petroleum and coal products manufacturing.....	324	5.925	144.9	136.7	-3.4	3.1	2.2	-6.3	-5.7
Chemical manufacturing.....	325	14.538	131.2	130.7	-2.7	0.2	0.2	-0.5	-0.4
Plastics and rubber products manufacturing.....	326	2.243	134.7	134.7	1.1	-0.6	-0.2	0.2	0.0
Nonmetallic mineral product manufacturing.....	327	0.734	131.9	131.5	0.1	0.0	0.2	-0.2	-0.3
Manufacturing, part 3.....	33	52.244	131.8	131.8	2.3	0.4	0.7	0.3	0.0
Primary metal manufacturing.....	331	4.687	213.7	217.3	5.9	3.0	4.3	1.6	1.7
Machinery manufacturing.....	333	9.569	152.5	152.7	2.3	-0.1	0.6	0.2	0.1
Computer and electronic product manufacturing.....	334	12.649	83.7	83.6	0.5	0.1	0.1	0.4	-0.1
Transportation equipment manufacturing..	336	13.370	149.6	149.6	4.0	0.1	0.5	0.1	0.0
Furniture and related product manufacturing (Dec. 2023=100).....	337	0.355	102.3	102.3	-	0.0	0.1	0.4	0.0
Miscellaneous manufacturing.....	339	5.113	143.0	141.5	1.8	0.6	0.7	0.2	-1.0

¹ Relative importance figures are based on 2022 trade values.

NOTES: Data may be revised in each of the 3 months after original publication.

Dash = Not available

Table 5. U.S. import price indexes and percent changes for selected categories of goods: June 2023 to June 2024

[2000=100, unless otherwise noted]

Description	Harmonized system	Relative importance May 2024 ¹	Index		Percent change				
			May 2024	Jun. 2024	Annual	Monthly			
					Jun. 2023 to Jun. 2024	Feb. 2024 to Mar. 2024	Mar. 2024 to Apr. 2024	Apr. 2024 to May 2024	May 2024 to Jun. 2024
Live animals; animal products.....	I	1.488	241.2	240.6	2.8	1.7	0.5	0.1	-0.2
Meat and edible meat offal.....	02	0.446	358.6	352.2	8.0	3.8	2.5	1.7	-1.8
Fish and crustaceans, molluscs and other aquatic invertebrates.....	03	0.695	148.6	149.4	-1.4	0.8	-1.1	0.0	0.5
Vegetable products.....	II	2.073	251.5	249.1	1.3	-1.2	0.3	-4.2	-1.0
Edible vegetables, roots, and tubers.....	07	0.493	474.5	600.4	25.9	9.2	-2.2	-12.5	26.5
Edible fruit and nuts; peel of citrus fruit or melons.....	08	0.779	126.4	103.4	-10.9	-1.7	1.4	-4.9	-18.2
Coffee, tea, mate and spices.....	09	0.399	302.4	320.4	6.4	1.0	1.1	0.6	6.0
Animal or vegetable fats and oils (Dec. 2009=100).....	III	0.455	151.7	151.1	4.4	3.0	1.5	-0.4	-0.4
Animal or vegetable fats and oils and their cleavage products; prepared (Dec. 2023=100).....	15	0.455	102.1	101.7	-	3.0	1.5	-0.4	-0.4
Prepared foodstuffs, beverages, and tobacco.....	IV	3.642	211.7	211.9	8.3	1.8	5.3	-1.4	0.1
Sugars and sugar confectionary (Dec. 2021=100).....	17	0.244	127.9	128.7	11.8	1.7	-0.8	0.4	0.6
Cocoa and cocoa preparations (Dec. 2009=100).....	18	0.480	250.2	246.9	103.9	21.4	44.7	-11.8	-1.3
Preparations of cereals, flour, starch or milk; bakers' wares (Dec. 2023=100).....	19	0.489	99.9	100.1	-	-0.1	0.1	0.0	0.2
Miscellaneous edible preparations (Dec. 2022=100).....	21	0.418	99.7	99.8	1.6	-2.1	5.6	0.9	0.1
Beverages, spirits, and vinegar.....	22	1.106	155.1	154.8	0.8	0.5	0.1	-0.1	-0.2
Mineral products.....	V	8.688	304.9	301.6	7.4	4.7	4.1	0.4	-1.1
Mineral fuels, oils and residuals, bituminous substances and mineral waxes.....	27	8.392	298.6	295.2	8.3	4.9	4.3	0.4	-1.1
Products of the chemical or allied industries.....	VI	10.692	173.1	173.4	0.6	-0.2	-0.1	-0.1	0.2
Organic chemicals.....	29	2.189	136.5	136.3	-5.7	-0.2	-0.5	-0.1	-0.1
Pharmaceutical products.....	30	5.603	156.5	156.8	5.7	0.1	0.5	0.2	0.2
Fertilizers (Dec. 2022=100).....	31	0.213	61.7	62.8	-6.0	2.6	-0.2	-3.1	1.8
Tanning extracts; dye, pigments, varnish, paints & putty (Dec. 2022=100).....	32	0.194	101.3	100.6	-1.4	-0.1	-0.2	0.7	-0.7
Miscellaneous chemical products.....	38	0.867	111.2	112.0	-6.8	-0.8	-1.3	-1.2	0.7
Plastics and articles thereof; rubber and articles thereof.....	VII	3.729	153.7	154.1	-2.7	-0.2	0.3	-0.1	0.3
Plastics and articles thereof.....	39	2.487	150.8	150.9	-4.5	-0.5	0.3	-0.1	0.1
Rubber and articles thereof.....	40	1.243	162.5	163.5	0.7	0.2	0.1	-0.1	0.6
Printed matter (Dec. 2023=100).....	49	0.167	99.8	100.1	-	-0.2	0.0	0.0	0.3
Textile and textile articles.....	XI	4.519	121.0	121.0	0.2	0.0	0.1	0.2	0.0
Articles of apparel and clothing accessories, knitted or crocheted (Dec. 2023=100).....	61	1.921	99.8	99.7	-	0.0	-0.2	-0.3	-0.1
Articles of apparel and clothing accessories, not knitted or crocheted.....	62	1.413	127.6	127.6	0.4	0.0	0.2	0.4	0.0
Made-up or worn textile articles (Dec. 2023=100).....	63	0.615	99.5	99.6	-	0.0	-0.2	0.1	0.1
Headgear, umbrellas, artificial flowers, etc.....	XII	1.436	126.3	126.4	-0.2	0.0	0.1	-0.4	0.1
Footwear and parts of such articles.....	64	1.177	123.5	123.6	0.0	-0.1	0.1	-0.2	0.1

See footnotes at end of table.

Table 5. U.S. import price indexes and percent changes for selected categories of goods: June 2023 to June 2024 — Continued

[2000=100, unless otherwise noted]

Description	Harmoni- zied system	Relative importance May 2024 ¹	Index		Percent change				
			May 2024	Jun. 2024	Annual	Monthly			
					Jun. 2023 to Jun. 2024	Feb. 2024 to Mar. 2024	Mar. 2024 to Apr. 2024	Apr. 2024 to May 2024	May 2024 to Jun. 2024
Stone, plaster, cement, asbestos, ceramics, glass etc.....	XIII	0.940	138.1	137.7	-0.6	-0.5	0.0	0.9	-0.3
Articles of stone, plaster, cement, asbestos, or mica (Dec. 2020=100).....	68	0.324	100.7	100.7	-2.1	-0.9	0.5	0.0	0.0
Glass and glassware (Dec. 2021=100).....	70	0.347	112.1	110.5	1.0	-0.1	0.0	2.4	-1.4
Pearls, stones, precious metals, imitation jewelry, and coins.....	XIV	3.199	239.1	242.3	4.4	1.6	4.6	0.5	1.3
Pearls, precious stones, precious metals jewelry, coin (Dec. 2023=100).....	71	3.199	106.2	107.7	-	1.6	4.7	0.5	1.4
Base metals and articles of base metals. ...	XV	5.920	232.5	234.5	0.2	0.8	0.4	1.6	0.9
Articles of iron or steel.....	73	1.722	191.4	190.7	-6.1	-1.1	0.3	-0.2	-0.4
Copper and articles thereof.....	74	0.587	452.1	455.8	22.7	3.0	9.0	6.6	0.8
Aluminum and articles thereof.....	76	1.109	196.0	207.3	9.0	5.3	-1.8	4.4	5.8
Tools, implements, cutlery, spoons and forks, of base metal; parts thereof.....	82	0.412	133.0	132.7	0.5	-0.3	-0.1	-0.2	-0.2
Miscellaneous articles of base metal.....	83	0.507	141.9	141.9	-3.7	-0.1	-0.4	-0.1	0.0
Machinery, electrical equipment, TV image and sound recorders, parts, etc.....	XVI	30.244	82.2	82.1	-0.6	-0.4	0.1	-0.1	-0.1
Machinery and mechanical appliances; parts thereof.....	84	15.228	89.9	89.9	0.2	0.1	-0.1	0.0	0.0
Electrical machinery and equip, sound and TV recorders & reproducers, parts.....	85	15.016	75.0	75.0	-1.3	-0.7	0.3	-0.3	0.0
Vehicles, aircraft, vessels and associated transport equipment.....	XVII	11.745	124.0	123.9	2.0	0.1	0.3	0.0	-0.1
Motor vehicles and their parts.....	87	10.985	123.1	123.1	2.1	0.1	0.3	-0.1	0.0
Aircraft, spacecraft, and parts thereof (Dec. 2020=100).....	88	0.620	108.0	107.6	-0.5	0.5	0.4	0.1	-0.4
Optical, photo, measuring, medical & musical instruments; & timepieces.....	XVIII	4.166	110.9	110.9	2.6	0.2	0.3	-0.2	0.0
Optical, photographic, measuring and medical instruments.....	90	3.871	106.6	106.6	2.8	0.4	0.3	0.0	0.0
Miscellaneous manufactured articles.....	XX	4.551	120.6	120.7	0.3	0.2	0.0	0.2	0.1
Furniture & stuffed furnishings; lamps & lighting fittings, nesoi; prefab bldgs.....	94	2.529	127.3	127.5	-0.2	0.1	-0.1	0.3	0.2
Toys, games and sports equipment; parts and accessories thereof.....	95	1.710	107.1	107.1	0.6	0.3	-0.1	0.0	0.0
Miscellaneous manufactured articles.....	96	0.312	152.6	152.6	3.6	0.8	0.0	0.0	0.0

¹ Relative importance figures are based on 2022 trade values.

NOTES: Data may be revised in each of the 3 months after original publication.

Dash = Not available

Table 6. U.S. export price indexes and percent changes for selected categories of goods: June 2023 to June 2024

[2000=100, unless otherwise noted]

Description	Harmonized system	Relative importance May 2024 ¹	Index		Percent change				
			May 2024	Jun. 2024	Annual	Monthly			
					Jun. 2023 to Jun. 2024	Feb. 2024 to Mar. 2024	Mar. 2024 to Apr. 2024	Apr. 2024 to May 2024	May 2024 to Jun. 2024
Live animals; animal products.....	I	2.006	271.9	276.8	5.9	2.0	2.1	0.5	1.8
Meat & edible meat offal (Dec. 2006=100)...	02	1.306	237.4	243.5	10.9	2.6	2.6	0.9	2.6
Vegetable products.....	II	4.079	239.2	239.6	-11.1	-3.7	-0.6	2.0	0.2
Edible fruit and nuts; peel of citrus fruit or melons.....	08	0.870	151.4	157.1	14.2	-1.0	-3.5	3.1	3.8
Cereals.....	10	1.176	238.4	237.1	-21.4	-5.3	0.7	4.2	-0.5
Oilseeds and misc. grains, seeds, fruits, plants, straw and fodder.....	12	1.659	243.0	241.6	-13.5	-4.8	2.0	0.2	-0.6
Prepared foodstuffs, beverages, and tobacco.....	IV	2.840	179.2	180.7	-3.9	-0.2	-1.5	-1.0	0.8
Preparations of cereals, flour, starch or milk; bakers' wares (Dec. 2023=100).....	19	0.295	100.3	100.4	-	-0.2	0.1	0.1	0.1
Miscellaneous edible preparations (Dec. 2017=100).....	21	0.634	120.1	125.7	6.2	2.5	0.0	-0.8	4.7
Residues and waste from the food industries; prepared animal feed.....	23	0.593	248.2	246.1	-19.1	-3.4	-6.8	-1.9	-0.8
Mineral products.....	V	15.624	280.7	272.6	1.7	-0.3	1.4	-4.8	-2.9
Ores, slag and ash (Dec. 2012=100).....	26	0.458	137.0	142.0	8.1	1.6	0.8	13.8	3.6
Mineral fuels, oils and residuals, bituminous substances and mineral waxes.....	27	14.971	268.1	259.7	1.5	-0.4	1.4	-5.4	-3.1
Products of the chemical or allied industries.....	VI	12.410	157.5	156.8	-4.2	0.3	0.0	-0.4	-0.4
Pharmaceutical products.....	30	4.334	103.3	103.3	-4.7	-0.1	0.1	-0.2	0.0
Essential oils and resinoids; perfumery cosmetic or toilet preparations.....	33	0.805	146.7	146.7	-1.8	0.0	-0.1	-0.1	0.0
Miscellaneous chemical products.....	38	2.300	194.0	194.1	0.9	0.4	0.3	0.0	0.1
Rubber and articles thereof.....	40	0.924	193.0	193.0	14.5	-0.8	0.2	1.5	0.0
Wood, wood charcoal, cork, straw, baskets and wickerwork (Dec. 2014=100).....	IX	0.472	109.7	109.8	3.6	1.1	0.5	-2.4	0.1
Wood and articles of wood; wood charcoal (Dec. 2023=100).....	44	0.472	102.3	102.4	-	1.0	0.6	-2.4	0.1
Woodpulp and recovered paper (Dec. 2019=100).....	47	0.573	172.6	172.6	39.0	1.9	5.3	0.6	0.0
Cotton, including yarns and woven fabrics thereof.....	52	0.648	154.8	154.0	-3.2	3.5	-0.4	-6.9	-0.5
Stone, plaster, cement, asbestos, ceramics, glass etc.....	XIII	0.745	153.6	152.8	4.0	0.1	0.1	-0.2	-0.5
Glass and glassware (Dec. 2019=100).....	70	0.352	114.4	113.1	1.7	0.3	0.2	-0.4	-1.1
Pearls, stones, precious metals, imitation jewelry, and coins.....	XIV	5.179	338.6	337.6	6.0	3.6	3.8	1.2	-0.3
Pearls, precious stones, precious metals; jewelry, coin (Dec. 2023=100).....	71	5.179	108.5	108.1	-	3.6	3.9	1.2	-0.4
Base metals and articles of base metals. ...	XV	4.505	212.8	214.6	2.1	-0.4	0.9	0.9	0.8
Copper and articles thereof.....	74	0.636	307.7	310.9	20.6	1.5	7.6	8.3	1.0
Aluminum and articles thereof.....	76	0.748	154.8	158.5	8.5	0.8	1.1	4.0	2.4
Miscellaneous articles of base metal (Dec. 2022=100).....	83	0.335	105.7	105.7	3.8	-0.2	-0.1	0.0	0.0
Machinery, electrical equipment, TV image and sound recorders, parts, etc.....	XVI	26.557	108.7	108.7	2.0	0.2	0.5	0.3	0.0
Machinery and mechanical appliances; parts thereof.....	84	15.659	133.3	133.4	2.2	-0.2	0.5	0.2	0.1

See footnotes at end of table.

Table 6. U.S. export price indexes and percent changes for selected categories of goods: June 2023 to June 2024 — Continued

[2000=100, unless otherwise noted]

Description	Harmoni- zied system	Relative importance May 2024 ¹	Index		Percent change				
			May 2024	Jun. 2024	Annual	Monthly			
					Jun. 2023 to Jun. 2024	Feb. 2024 to Mar. 2024	Mar. 2024 to Apr. 2024	Apr. 2024 to May 2024	May 2024 to Jun. 2024
Electrical machinery and equipment and parts and accessories thereof.....	85	10.898	83.1	83.0	1.6	0.7	0.5	0.5	-0.1
Vehicles, aircraft, vessels and associated transport equipment.....	XVII	9.765	155.3	155.3	3.5	0.1	0.4	0.0	0.0
Motor vehicles and their parts.....	87	7.286	129.7	129.7	3.8	0.0	0.4	0.0	0.0
Optical, photo, measuring, medical & musical instruments; & timepieces.....	XVIII	5.806	120.3	120.3	2.5	-0.3	1.1	0.0	0.0
Optical, photographic, measuring and medical instruments (Dec. 2023=100).....	90	5.755	101.3	101.2	—	-0.2	1.1	0.0	-0.1
Miscellaneous manufactured articles.....	XX	1.175	137.5	137.6	0.7	0.3	0.4	0.5	0.1
Furniture; stuffed furnishings; lamps and lighting fittings nesoi.....	94	0.580	151.0	151.0	0.7	0.1	0.2	0.5	0.0
Toys, games and sports equipment; parts and accessories thereof.....	95	0.459	121.5	120.6	2.0	0.8	0.7	0.7	-0.7

¹ Relative importance figures are based on 2022 trade values.

NOTES: Data may be revised in each of the 3 months after original publication.

Dash = Not available

Table 7. U.S. import price indexes and percent changes by locality of origin: June 2023 to June 2024
 [2000=100, unless otherwise noted]

Description	Relative importance May 2024 ¹	Index		Percent change				
		May 2024	Jun. 2024	Annual Jun. 2023 to Jun. 2024	Monthly			
					Feb. 2024 to Mar. 2024	Mar. 2024 to Apr. 2024	Apr. 2024 to May 2024	May 2024 to Jun. 2024
Industrialized Countries²	100.000	147.9	148.2	2.8	0.4	1.5	0.1	0.2
Nonmanufacturing.....	11.071	262.5	260.1	10.3	3.0	7.1	0.2	-0.9
Manufacturing.....	88.566	138.9	139.4	2.1	0.1	0.8	0.2	0.4
Canada	100.000	174.9	175.0	3.1	1.0	3.2	-0.2	0.1
Nonmanufacturing.....	32.594	256.4	254.4	10.2	3.1	7.5	-0.1	-0.8
Manufacturing.....	66.599	156.5	157.3	0.2	0.2	1.3	-0.2	0.5
European Union	100.000	158.7	159.3	2.4	0.1	0.4	0.2	0.4
Manufacturing.....	99.330	154.4	154.9	2.3	0.0	0.5	0.2	0.3
France (Dec. 2003=100)	100.000	158.4	158.6	4.4	0.1	0.5	0.1	0.1
Germany (Dec. 2003=100)	100.000	124.6	124.8	-0.1	0.2	0.3	-0.1	0.2
United Kingdom (Dec. 2003=100)	100.000	139.5	140.2	3.5	0.3	0.7	0.3	0.5
Latin America³	100.000	173.9	174.3	3.1	0.8	0.9	-0.9	0.2
Nonmanufacturing.....	13.307	330.2	333.3	7.7	0.0	-0.6	-3.6	0.9
Manufacturing.....	86.449	140.8	140.9	2.3	0.9	1.1	-0.4	0.1
Mexico (Dec. 2003=100)	100.000	147.4	147.7	3.1	0.7	0.5	-0.7	0.2
Nonmanufacturing (Dec. 2008=100).....	8.558	176.9	179.3	12.7	2.2	-2.9	-4.7	1.4
Manufacturing (Dec. 2008=100).....	91.202	100.6	100.7	2.3	0.5	0.9	-0.3	0.1
Pacific Rim (Dec. 2003=100)⁴	100.000	102.1	102.1	-0.8	-0.2	0.4	-0.2	0.0
China (Dec. 2003=100)	100.000	100.4	100.4	-1.6	0.0	0.0	-0.1	0.0
Japan	100.000	101.1	100.9	0.1	-1.0	-0.2	0.1	-0.2
Taiwan (Dec. 2018=100)	100.000	108.6	109.1	-0.6	0.0	0.1	0.1	0.5
Asian NICs⁵	100.000	95.0	95.1	-0.4	0.1	0.8	-0.1	0.1
ASEAN (Dec. 2003=100)⁶	100.000	99.8	99.3	-2.6	0.3	0.8	-1.1	-0.5
Asia Near East (Dec. 2003=100)⁷	100.000	220.2	208.6	-0.2	1.7	5.1	-2.7	-5.3

¹ Relative importance figures are based on 2022 trade values.

² Western Europe, Canada, Japan, Australia, New Zealand, and South Africa.

³ Mexico, Central America, South America, and the Caribbean.

⁴ China, Japan, Australia, Brunei, Indonesia, Macao, Malaysia, New Zealand, Papua New Guinea, Philippines, and the Asian Newly Industrialized Countries.

⁵ Asian Newly Industrialized Countries - Hong Kong, Singapore, South Korea, and Taiwan.

⁶ Association of Southeast Asian Nations - Brunei, Cambodia, Indonesia, Laos, Malaysia, Myanmar, Philippines, Singapore, Thailand, and Vietnam.

⁷ Bahrain, Iran, Iraq, Israel, Jordan, Kuwait, Lebanon, Oman, Qatar, Saudi Arabia, Syria, United Arab Emirates, and Yemen.

NOTES: Data may be revised in each of the 3 months after original publication.

Regions are not mutually exclusive.

Dash = Not available

Table 8. U.S. export price indexes and percent changes by locality of destination: June 2023 to June 2024
 [December 2017=100, unless otherwise noted]

Description	Relative importance May 2024 ¹	Index		Percent change				
		May 2024	Jun. 2024	Annual Jun. 2023 to Jun. 2024	Monthly			
					Feb. 2024 to Mar. 2024	Mar. 2024 to Apr. 2024	Apr. 2024 to May 2024	May 2024 to Jun. 2024
Industrialized Countries²	100.000	121.9	122.3	3.4	0.2	0.8	-0.8	0.3
Nonmanufacturing.....	14.535	139.1	138.7	7.9	-1.9	1.1	-5.2	-0.3
Manufacturing.....	83.920	119.9	120.4	2.6	0.4	0.8	-0.1	0.4
Canada	100.000	128.9	129.2	2.1	0.4	0.4	0.0	0.2
Nonmanufacturing (Dec. 2020=100).....	7.319	135.6	136.0	7.8	0.6	0.1	-1.6	0.3
Manufacturing (Dec. 2020=100).....	91.009	120.3	120.5	1.3	0.3	0.3	0.1	0.2
European Union	100.000	121.9	121.4	4.5	1.2	1.3	-1.3	-0.4
Nonmanufacturing.....	22.806	144.0	142.0	9.1	3.9	4.4	-5.4	-1.4
Manufacturing.....	75.438	117.3	117.2	3.4	0.4	0.3	-0.2	-0.1
Germany	100.000	124.3	124.3	7.3	0.6	1.1	-0.1	0.0
Latin America³	100.000	123.5	121.8	0.5	0.2	1.5	-1.6	-1.4
Nonmanufacturing.....	7.097	134.6	141.4	7.3	-5.9	1.5	-2.0	5.1
Manufacturing.....	92.339	122.7	120.5	-0.2	0.8	1.5	-1.7	-1.8
Mexico	100.000	123.9	126.2	3.4	0.2	2.0	-1.0	1.9
Nonmanufacturing.....	5.604	107.7	118.1	5.9	-9.6	2.9	0.2	9.7
Manufacturing.....	93.550	126.0	127.7	3.0	1.0	1.8	-1.1	1.3
Pacific Rim⁴	100.000	114.9	115.1	1.9	0.0	1.2	-0.7	0.2
Nonmanufacturing.....	20.284	118.8	118.2	0.5	-1.7	2.9	-3.0	-0.5
Manufacturing.....	78.409	115.4	115.8	2.1	0.5	0.7	-0.2	0.3
China	100.000	107.8	107.4	-0.4	0.4	0.8	-0.3	-0.4
Nonmanufacturing.....	24.112	103.3	101.9	-5.6	0.4	1.9	-1.5	-1.4
Manufacturing.....	74.178	111.4	111.4	1.1	0.4	0.3	0.0	0.0
Japan	100.000	110.8	111.3	-0.6	-1.5	1.5	-0.4	0.5
Nonmanufacturing.....	21.131	120.8	119.0	-2.1	-7.3	0.0	-2.3	-1.5
Manufacturing.....	77.519	108.1	109.2	-0.3	0.2	1.8	0.0	1.0

¹ Relative importance figures are based on 2022 trade values.

² Western Europe, Canada, Japan, Australia, New Zealand, and South Africa.

³ Mexico, Central America, South America, and the Caribbean.

⁴ China, Japan, Australia, Brunei, Indonesia, Macao, Malaysia, New Zealand, Papua New Guinea, Philippines, and the Asian Newly Industrialized Countries.

NOTES: Data may be revised in each of the 3 months after original publication.

Regions are not mutually exclusive.

Dash = Not available

Table 9. U.S. terms of trade indexes and percent changes by locality: June 2023 to June 2024¹
 [December 2017=100, unless otherwise noted]

Description	Index		Percent change				
	May 2024	Jun. 2024	Annual	Monthly			
			Jun. 2023 to Jun. 2024	Feb. 2024 to Mar. 2024	Mar. 2024 to Apr. 2024	Apr. 2024 to May 2024	May 2024 to Jun. 2024
Industrialized Countries²	100.9	101.0	0.5	-0.3	-0.7	-0.9	0.1
Canada	96.8	97.0	-0.9	-0.6	-2.7	0.1	0.2
European Union	103.4	102.6	2.1	1.2	0.9	-1.4	-0.8
Germany	114.8	114.6	7.4	0.4	0.7	0.0	-0.2
Latin America³	105.7	104.1	-2.5	-0.6	0.6	-0.8	-1.5
Mexico	108.4	110.2	0.2	-0.4	1.4	-0.4	1.7
Pacific Rim⁴	110.7	110.9	2.7	0.2	0.8	-0.5	0.2
China	107.5	107.1	1.2	0.4	0.8	-0.2	-0.4
Japan	104.7	105.3	-0.8	-0.6	1.6	-0.4	0.6

¹ Terms of trade indexes are derived by dividing the export price index by the corresponding import price index and multiplying by 100.

² Western Europe, Canada, Japan, Australia, New Zealand, and South Africa.

³ Mexico, Central America, South America, and the Caribbean.

⁴ China, Japan, Australia, Brunei, Indonesia, Macao, Malaysia, New Zealand, Papua New Guinea, Philippines, and the Asian Newly Industrialized Countries.

NOTES: Data may be revised in each of the 3 months after original publication.

Regions are not mutually exclusive.

Dash = Not available

Table 10. U.S. international price indexes and percent changes for selected transportation services: June 2023 to June 2024

[2000=100, unless otherwise noted]

Description	Relative importance May 2024 ¹	Index		Percent change				
		May 2024	Jun. 2024	Annual Jun. 2023 to Jun. 2024	Monthly			
					Feb. 2024 to Mar. 2024	Mar. 2024 to Apr. 2024	Apr. 2024 to May 2024	May 2024 to Jun. 2024
Air Freight								
Import Air Freight	100.000	231.0	235.7	-1.8	0.5	5.6	-0.7	2.0
Europe (Dec. 2003=100).....	22.367	158.1	146.7	-32.5	7.3	-15.0	5.6	-7.2
Asia.....	76.826	243.4	254.8	10.3	-1.5	13.5	-2.4	4.7
Export Air Freight	100.000	168.9	168.1	-3.9	1.1	-2.5	-1.9	-0.5
Europe (Dec. 2006=100).....	26.782	123.6	121.5	-13.0	1.0	-5.8	-0.6	-1.7
Asia (Dec. 2011=100).....	50.607	137.9	138.0	0.4	2.1	-1.7	-2.8	0.1
Inbound Air Freight	100.000	167.5	174.5	5.3	5.8	2.9	-4.2	4.2
Europe (Dec. 2003=100).....	26.914	138.7	128.7	-19.6	8.2	-9.0	2.7	-7.2
Asia.....	61.418	164.2	175.4	17.7	4.2	8.2	-3.9	6.8
Outbound Air Freight	100.000	165.5	167.6	-6.7	-1.6	-0.9	-0.7	1.3
Europe (Dec. 2003=100).....	34.702	158.7	157.0	-8.0	1.0	-4.4	0.3	-1.1
Asia.....	44.207	179.2	186.6	-7.5	-4.0	1.5	-1.6	4.1
Air Passenger Fares								
Import Air Passenger Fares	100.000	181.5	197.9	-2.5	0.3	1.2	0.4	9.0
Europe.....	49.336	208.1	224.1	-7.4	-1.5	-0.4	7.3	7.7
Asia.....	12.189	172.0	188.4	-5.3	7.2	-0.8	2.4	9.5
Latin America/Caribbean.....	8.980	137.7	149.8	-7.0	7.3	-9.0	-3.2	8.8
Export Air Passenger Fares	100.000	176.7	195.4	-1.3	4.0	0.5	-3.0	10.6
Europe.....	38.153	218.8	252.8	-3.8	4.7	-2.7	5.2	15.5
Asia.....	12.453	189.2	198.8	-7.4	4.4	1.9	-0.7	5.1
Latin America/Caribbean.....	29.027	158.8	178.9	-7.5	3.2	2.7	-13.5	12.7

¹ Relative importance figures are based on 2022 trade values.

NOTES: Data may be revised in each of the 3 months after original publication.

Dash = Not available

TECHNICAL NOTE

Import and Export Goods and Services Price Indexes - All indexes use a modified Laspeyres formula and are not seasonally adjusted. Price indexes are reweighted annually, with a 2-year lag in the weights. Published series use a base year of 2000=100 where possible. More detailed index series and additional information may be obtained at www.bls.gov/mxp or by calling (202) 691-7101.

Merchandise Goods Classification Systems - The merchandise price indexes are published using three classification systems. Items are classified by end use according to the Bureau of Economic Analysis Classification System, by industry according to the North American Industry Classification System (NAICS), and by product category according to the Harmonized System (HS). While classification by end use and product category are self-explanatory, some notes are in order for classifying items by industry. In the NAICS imports and exports tables, items are classified by output industry, not input industry. As an example, NAICS import index 326 (plastics and rubber products manufacturing) includes outputs such as manufactured plastic rather than inputs such as petroleum. The NAICS classification structure also matches the classification system used by the Producer Price Index (PPI) to produce the NAICS primary products indexes.

Import Price Goods Indexes - Items are classified by the Harmonized Tariff Schedule of the United States Annotated (TSUSA). Import prices are based on U.S. dollar prices paid by the U.S. importer. The prices are generally either "free on board" (f.o.b.) foreign port or "cost, insurance, and freight" (c.i.f.) U.S. port transaction prices, depending on the practices of the individual industry. The index for crude petroleum is calculated from data collected by the U.S. Department of Energy.

Export Price Goods Indexes - Items are classified by the Harmonized Schedule B classification system of the U.S. Bureau of the Census. The prices used are generally either "free alongside ship" (f.a.s.) factory or "free on board" (f.o.b.) transaction prices, depending on the practices of the individual industry. Prices used in the grain index, excluding rice, are obtained from the U.S. Department of Agriculture.

Services Price Indexes - Indexes for import and export air passenger fares calculate changes in the average revenue received per passenger by foreign carriers from U.S. residents and by U.S. carriers from foreign residents, respectively. Data are obtained from an airline consulting service and report on tickets sold by travel agencies, travel websites, and directly by the airlines. Taxes and fees are included in both the import and export air passenger fares indexes. Import air passenger fares data have used the airline consulting service source since September 2008. Before April 2018, the export air passenger fares data were collected directly by BLS from U.S. airlines. The air freight indexes are calculated from data collected directly from airlines. These data exclude mail and passenger baggage. The scope of the service being priced is the movement of freight from airport to airport only, and does not include any ground transportation or port service. The air freight indexes are presented using two definitions: balance of payments (which represents transactions between U.S. and foreign residents) and international (which represents transactions inbound to and outbound from the United States.) Fact sheets specifying detailed information for each services industry are available at www.bls.gov/mxp under "MXP Publications."

Import Price Indexes by Locality of Origin - Prices used in these indexes are a subset of the data collected for the import price indexes. The indexes are specific to a country, region, or grouping and, beginning with January 2002, are based on the North American Industry Classification System (NAICS) covering goods-producing industries. Nonmanufactured goods are defined as NAICS 11 and 21, and manufactured goods are defined as NAICS 31-33.

Export Price Indexes by Locality of Destination - Prices used in these indexes are a subset of the data collected for the export price indexes. The indexes are specific to a country, region, or grouping and are based on the North American Industry Classification System (NAICS) covering goods-producing industries. Nonmanufactured goods are defined as NAICS 11 and 21, and manufactured goods are defined as NAICS 31-33.

Terms of Trade Indexes - Terms of trade indexes measure the relative price of exports in terms of import prices for a specific country, region, or grouping. The indexes are calculated as one country, region, or grouping's all-export goods price index divided by the corresponding all-import goods price index on a scale of 100.

Relative Importance - A relative importance is a specific index's price-updated value share (expressed as a percentage) of overall imports or exports at a specific point in time. Relative importance values are affected by the trade weights at the point indexes are reweighted and index changes relative to other indexes since the reweight point. If an index is rising in value relative to other indexes over time, the relative importance will increase as well.

Revision Policy - To reflect the availability of late reports and corrections by respondents, monthly data may be revised in each of the 3 months after original publication. After 3 months, no further data revisions take place. For example, data first published in the January release will be subject to revision in the releases for February, March, and April.

Rounding Policy - Index values are rounded to the tenth decimal place after being calculated. All percent changes are then derived from the rounded index values and subsequently rounded to the tenth decimal place.

Uses of the Data - The primary use of the indexes is to deflate trade statistics, notably the foreign trade sector of the National Income and Product Accounts (NIPA) constructed by the Department of Commerce. Other published indexes are useful for general market analysis. For trade in international services, balance of payments indexes are used for deflating NIPA, while international indexes are more appropriate for market analysis.

Additional Information - More detailed data are available on the Import/Export Price Indexes home page at www.bls.gov/mxp. For import and export price indexes data requests, send an email to mxpinfo@bls.gov.

If you are deaf, hard of hearing, or have a speech disability, please dial 7-1-1 to access telecommunications relay services.