



Nursing assistants

Provide or assist with basic care or support under the direction of onsite licensed nursing staff. Perform duties such as monitoring of health status, feeding, bathing, dressing, grooming, toileting, or ambulation of patients in a health or nursing facility. May include medication administration and other health-related tasks. Includes nursing care attendants, nursing aides, and nursing attendants.

Cognitive and mental requirements

The qualifications that workers need to use judgment, make decisions, interact with others, and adapt to changes in jobs.

In 2023, work was reviewed by a supervisor more than once per day for 72.3 percent of nursing assistants, and once per day for 18.6 percent.

Table 1. Percentage of nursing assistants with cognitive and mental requirements, 2023

Requirement	Yes	No
Pace: Pause control	27.0	73.0
Interaction with general public	>99.5	<0.5
Working around crowds	1.1	98.9
Telework	<0.5	>99.5
Work review: Supervising others	0.7	99.3
Work review: Presence of supervisor	85.9	14.1

Source: U.S. Bureau of Labor Statistics, Occupational Requirements Survey

Education, training, and experience requirements

The minimum level of formal education required, credentials necessary, on-the-job training, and prior work experience necessary for average performance in jobs.

In 2023, credentials were required for 89.0 percent of nursing assistants. Prior work experience was required for 14.1 percent and on-the-job training was required for 91.8 percent.

A high school diploma was required for 68.1 percent of nursing assistants.

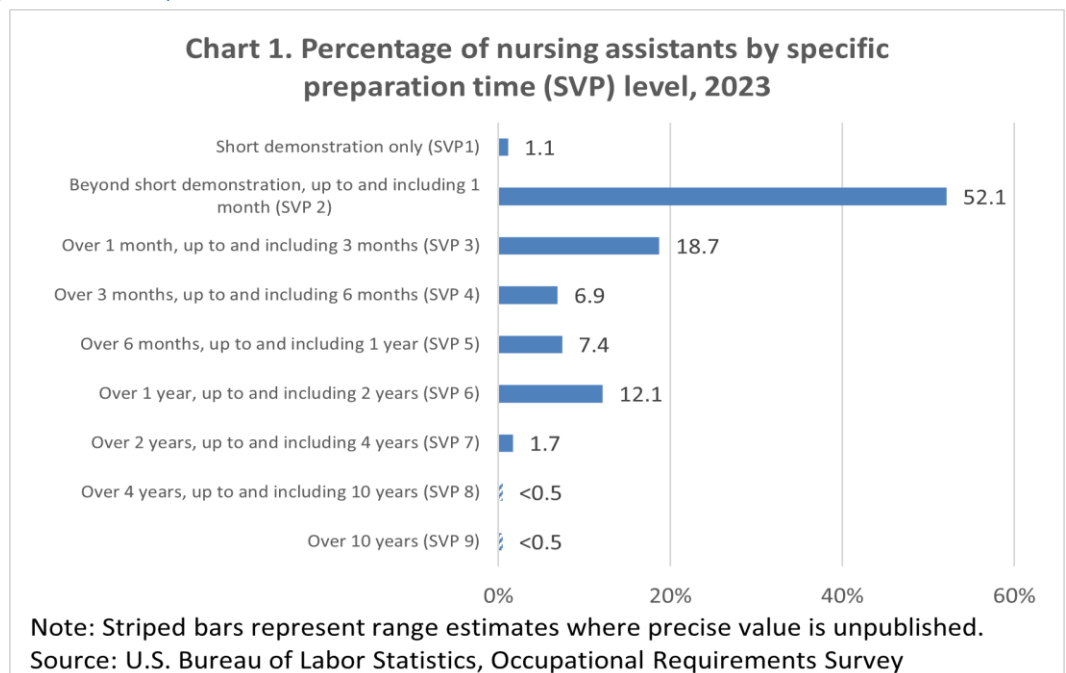
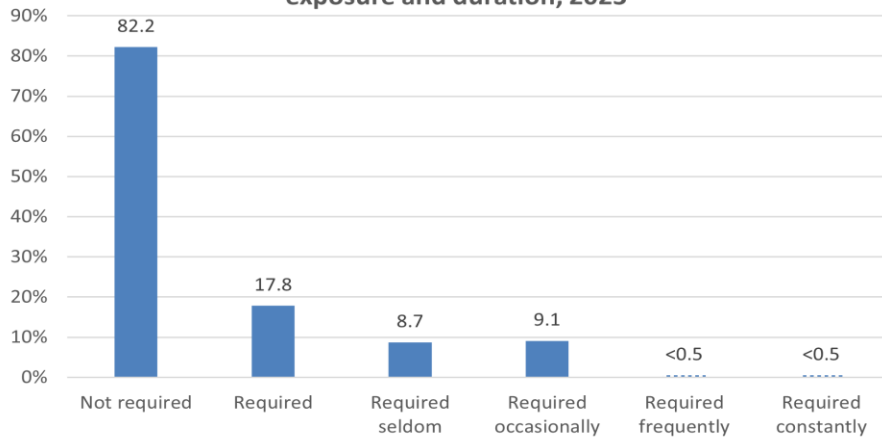


Chart 2. Percentage of nursing assistants with outdoor exposure and duration, 2023



Note: Striped bars represent range estimates where precise value is unpublished.
Source: U.S. Bureau of Labor Statistics, Occupational Requirements Survey

Environmental conditions

The various tangible or concrete hazards or difficulties that are in the vicinity of where jobs' critical tasks are performed.

In 2023, greater than 99.5 percent of nursing assistants were not exposed to extreme cold, and greater than 99.5 percent were not exposed to extreme heat. Heavy vibrations were not present for greater than 99.5 percent, and 82.2 percent were not exposed to the outdoors.

Physical demands

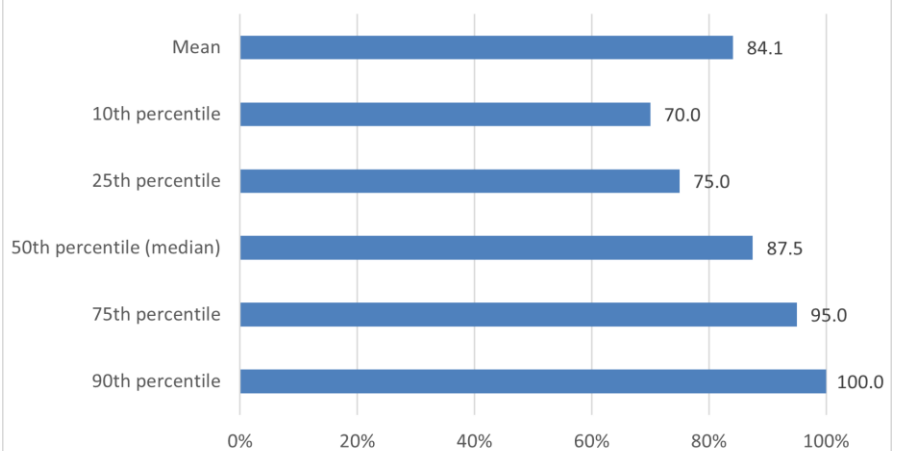
Refer to the physical activities required to perform tasks in jobs. The presence and, in some cases, duration of these activities are published.

In 2023, reaching at or below the shoulder was required for 97.1 percent of nursing assistants and was not required for 2.9 percent.

Performing work in low postures was required for 98.2 percent of nursing assistants and was not required for 1.8 percent.

The choice to sit or stand when performing critical tasks was available to 11.0 percent of nursing assistants. On average, workers spent 15.9 percent of the workday sitting and 84.1 percent of the workday standing.

Chart 3. Nursing assistants by percent of workday standing, 2023



Source: U.S. Bureau of Labor Statistics, Occupational Requirements Survey

Table 2. Percentage of nursing assistants with physical demands, 2023

Requirement	Yes	No
Choice of sitting or standing	11.0	89.0
Driving	8.5	91.5
Climbing structure-related ramps or stairs	10.8	89.2

Source: U.S. Bureau of Labor Statistics, Occupational Requirements Survey