

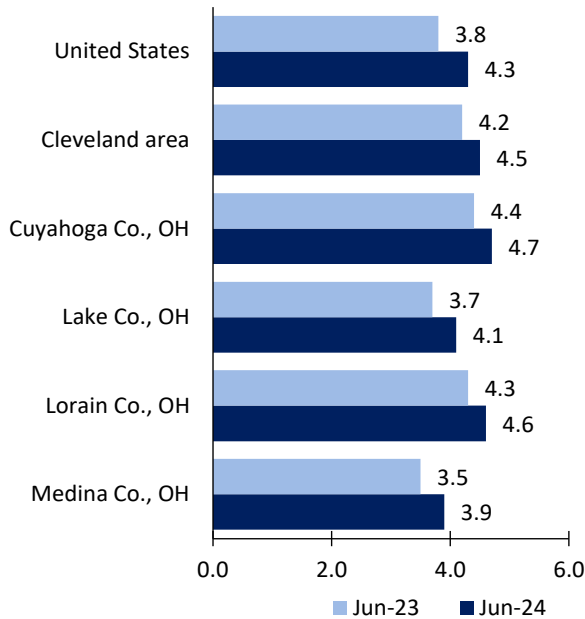
Cleveland Area Economic Summary

Updated August 05, 2024

This summary presents a sampling of economic information for the area; supplemental data are provided for regions and the nation. Subjects include **unemployment, employment, wages, prices, spending, and benefits**. All data are not seasonally adjusted and some may be subject to revision. Area definitions may differ by subject. For more area summaries and geographic definitions, see www.bls.gov/regions/economic-summaries.htm.

Unemployment rates for the nation and selected areas

Unemployment rates

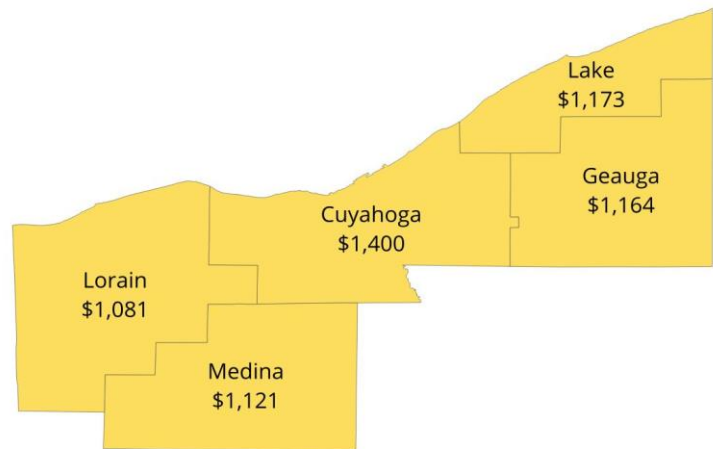


Source: U.S. BLS, Local Area Unemployment Statistics.

Average weekly wages for all industries by county

Cleveland area, fourth quarter 2023

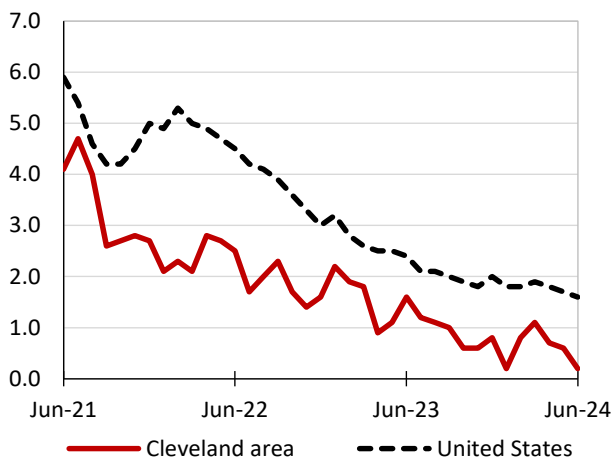
(U.S. = \$1,435; Area = \$1,321)



Source: U.S. BLS, Quarterly Census of Employment and Wages.

Over-the-year changes in employment on nonfarm payrolls and employment by major industry sector

12-month percent changes in employment



Source: U.S. BLS, Current Employment Statistics.

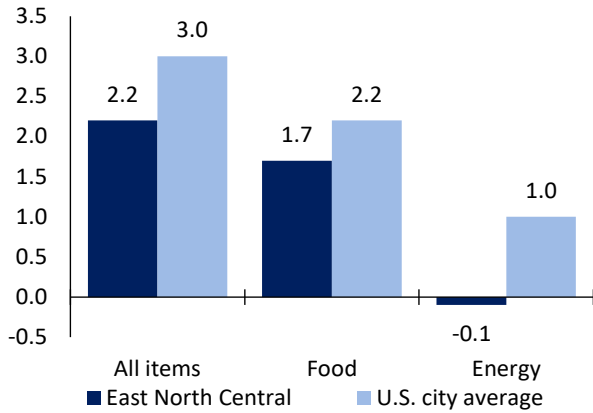
Cleveland area employment (number in thousands)	Jun. 2024	Change from Jun. 2023 to Jun. 2024	
		Number	Percent
Total nonfarm	1,077.1	1.8	0.2
Mining, logging, and construction	42.5	0.7	1.7
Manufacturing	118.0	-2.3	-1.9
Trade, transportation, and utilities	188.6	0.5	0.3
Information	14.1	-0.9	-6.0
Financial activities	70.5	-2.8	-3.8
Professional and business services	155.2	-0.4	-0.3
Education and health services	207.7	5.0	2.5
Leisure and hospitality	106.7	0.8	0.8
Other services	39.7	1.2	3.1
Government	134.1	0.0	0.0

Source: U.S. BLS, Current Employment Statistics.



Over-the-year change in the prices paid by urban consumers for selected categories

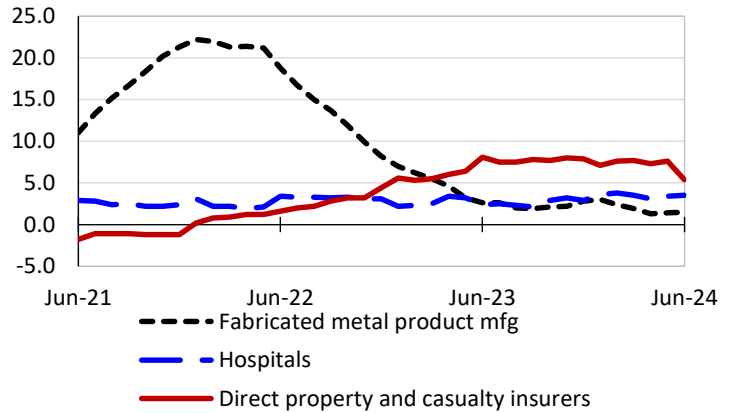
12-month percent change in CPI-U, June 2024



Source: U.S. BLS, Consumer Price Index.

Over-the-year changes in the selling prices received by producers for selected industries nationwide

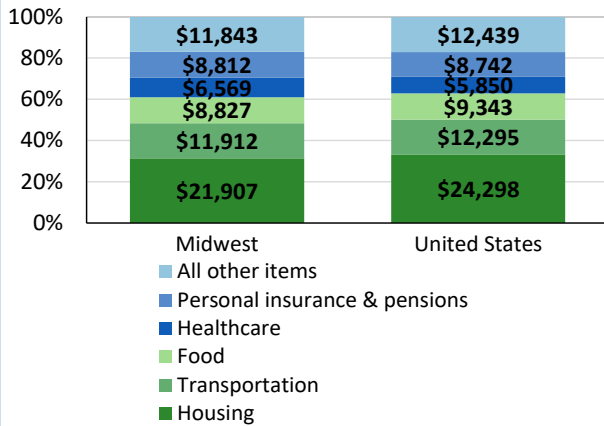
12-month percent changes in PPI



Source: U.S. BLS, Producer Price Index.

Average annual spending and percent distribution for selected categories

Average annual expenditures, United States and Midwest, 2022



Source: U.S. BLS, Consumer Expenditure Survey.

Average hourly wages for selected occupations

Occupation	Cleveland area	United States
All occupations	\$30.37	\$31.48
Registered nurses	42.88	45.42
Accountants and auditors	40.03	43.65
Inspectors, testers, sorters, samplers, and weighers	22.93	23.68
Bill and account collectors	19.68	22.12
Laborers and freight, stock, and material movers, hand	19.08	19.12
Cooks, restaurant	16.20	17.34

Source: U.S. BLS, Occupational Employment and Wage Statistics, May 2023.

Employer costs per hour worked for wages and selected employee benefits by geographic division

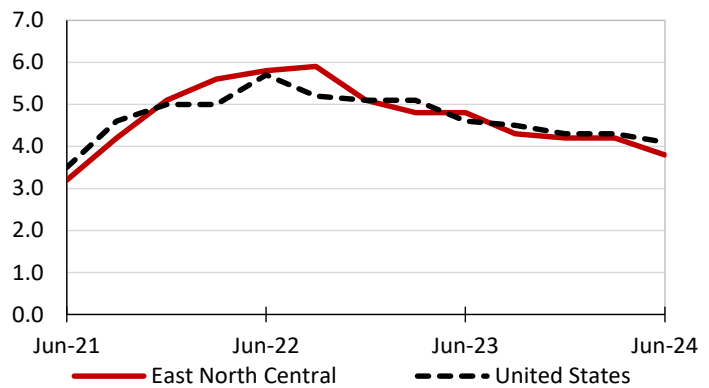
Private industry, March 2024	East North Central (1)	United States
Total compensation	\$42.50	\$43.78
Wages and salaries	29.43	30.76
Total benefits	13.07	13.02
Paid leave	3.09	3.31
Vacation	1.63	1.69
Supplemental pay	1.98	1.77
Insurance	3.34	3.20
Retirement and savings	1.61	1.52
Legally required benefits	3.05	3.21

(1) The states that compose the East North Central census division are: IL, IN, MI, OH, and WI.

Source: U.S. BLS, Employer Costs for Employee Compensation.

Over-the-year changes in wages and salaries

12-month percent changes in ECI



Source: U.S. BLS, Employment Cost Index.

