



**ERIAL-CLEMENTON ROAD (CR 703)
RECONSTRUCTION PROJECT – PHASE I
ERIAL-NEW BROOKLYN ROAD (CR 706) TO TURNSEVILLE-HICKSTOWN ROAD (CR
688) AND THE VICINITY OF CLOVERDALE AVENUE
ERI Job # 30750 44
Township of Gloucester and Borough of Pine Hill
County of Camden, New Jersey**

**WEEKLY PROGRESS REPORT #2
October 9, 2017 to October 13, 2017**



Figure: 1 – Installation of ADA ramp along the eastbound lane at the southwest corner of the intersection with Danbury Drive



Figure: 2 – Installation of triple 18” RCP storm sewers at the intersection with Cloverdale Avenue



Figure: 3 – Installation of concrete sidewalk along the eastbound lane at the southwest corner of the intersection with Danbury Drive

Work Completed the Week of October 9, 2017:

South State, Inc. completed the remaining ADA ramps in the Gloucester Township portion of the project as well as the drainage improvements at the intersection with Cloverdale Avenue in Pine Hill. South State's concrete crew installed 105.68 square yards of concrete sidewalk, 3.55 square yards of detectable warning surface, 132 linear feet of 9" x 18" concrete vertical curb, and 68.5 linear feet of 6" x 18" concrete vertical curb. The concrete crew also began topsoil and seed restoration on the completed ADA ramps as well as installed inlet protection throughout the project limits. South State's pipe crew installed 99 linear feet of 18" RCP.

- #6: Inlet Filter, Type 2 – 10 Units**
- #16: Police Uniform Law Enforcement Officer – 96 Hours**
- #37: 18" Reinforced Concrete Pipe – 99 LF**
- #44: Concrete Sidewalk, 4" Thick – 105.68 SY**
- #47: Detectable Warning Surface – 3.55 SY**
- #48: 9" x 18" Concrete Vertical Curb – 132 LF**
- #55: Topsoiling, 4" Thick – 219 SY**
- #57: Fertilizing and Seeding, Type F – 219 SY**
- #67: 6" x 18" Concrete Vertical Curb – 68.5 LF**

Anticipated Work for the Week of October 16, 2017:

South State will begin roadway improvements at the intersection with Cloverdale Avenue beginning with full depth reconstruction of the concrete surface course and roadway subbase.

Notice to Proceed Date: September 25, 2017

Anticipated Completion Date: February 21, 2018

Prepared By:



C. Jeremy Noll, PE, CME
Resident Engineer
Environmental Resolutions, Inc.



**ERIAL-CLEMENTON ROAD (CR 703)
RECONSTRUCTION PROJECT – PHASE I
ERIAL-NEW BROOKLYN ROAD (CR 706) TO TURNSEVILLE-HICKSTOWN ROAD (CR
688) AND THE VICINITY OF CLOVERDALE AVENUE
ERI Job # 30750 44
Township of Gloucester and Borough of Pine Hill
County of Camden, New Jersey**

**WEEKLY PROGRESS REPORT #3
October 16, 2017 to October 20, 2017**



Figure: 1 – Installation of traffic control measures in the vicinity of the intersection with Cloverdale Avenue



Figure: 2 – Removal of existing concrete surface course in the southbound lane in the vicinity of the intersection with Cloverdale Avenue



Figure: 3 – Rough grading of the roadway subbase in the southbound lane in the vicinity of the intersection with Cloverdale Avenue

Work Completed the Week of October 16, 2017:

South State, Inc. began the full depth reconstruction of the concrete roadway in the vicinity of the intersection with Cloverdale Avenue. South State's concrete crew removed 1,397.3 square yards of existing concrete surface course and excavated 175 cubic yards of the existing roadway subbase in the southbound lane. The concrete crew also installed 435 linear feet of 9" x 18" concrete vertical curb in the same area. South State also began replacing the existing inlet grates with bicycle safe grates throughout the project limits. The remaining soil erosion control measures were installed for the entire project limits.

#6: Inlet Filter, Type 2 – 13 Units

#16: Police Uniform Law Enforcement Officer – 80 Hours

#20: Excavation, Unclassified – 175 CY

#22: Removal of Pavement – 1,397.3 SY

#42: Bicycle Safe Grate – 13 Units

#48: 9" x 18" Concrete Vertical Curb – 435 LF

Anticipated Work for the Week of October 23, 2017:

South State, Inc. will complete the concrete curb installation along the southbound lane in the vicinity of the intersection with Cloverdale Avenue. South State will then begin installation of the concrete surface course in the same area, starting with the shoulder slabs before installing the travel lane slabs.

Notice to Proceed Date: September 25, 2017

Anticipated Completion Date: February 21, 2018

Prepared By:



C. Jeremy Noll, PE, CME
Resident Engineer
Environmental Resolutions, Inc.



**ERIAL-CLEMENTON ROAD (CR 703)
RECONSTRUCTION PROJECT – PHASE I
ERIAL-NEW BROOKLYN ROAD (CR 706) TO TURNSEVILLE-HICKSTOWN ROAD (CR
688) AND THE VICINITY OF CLOVERDALE AVENUE
ERI Job # 30750 44
Township of Gloucester and Borough of Pine Hill
County of Camden, New Jersey**

**WEEKLY PROGRESS REPORT #4
October 23, 2017 to October 27, 2017**



Figure: 1 – Installation of 8” thick dense graded aggregate base course in the southbound lane in the vicinity of the intersection with Cloverdale Avenue



Figure: 2 – Installation of reinforcement and expansion joint prior to the installation of concrete surface course in the southbound lane in the vicinity of the intersection with Cloverdale Avenue



Figure: 3 – Installation of 8” thick concrete surface course in the southbound lane in the vicinity of the intersection with Cloverdale Avenue

Work Completed the Week of October 23, 2017:

South State, Inc. continued the full depth reconstruction of the concrete roadway in the vicinity of the intersection with Cloverdale Avenue. South State's 20 cubic yards of the existing roadway then installed 1,050 square yards of 8' thick dense graded aggregate base course for the entire southbound lane of the reconstructed area. After compacting and fine grading the base course, the concrete crew installed southbound lane shoulder consisting of 467 square yards of 8" thick, reinforced concrete surface course. South State also installed 29 linear feet of 9" x 18" concrete vertical curb and reconstructed one drainage structure.

- #16: Police Uniform Law Enforcement Officer – 71 Hours**
- #20: Excavation, Unclassified – 20 CY**
- #23: Dense Graded Aggregate Base Course, 8" Thick – 1,050 SY**
- #28: Concrete Surface Course, 8" Thick – 467 SY**
- #41: Reconstruct Drainage Structure, Using New Casting – 1 Unit**
- #48: 9" x 18" Concrete Vertical Curb – 29 LF**

Anticipated Work for the Week of October 30, 2017:

South State, Inc. will continue installing concrete surface course for the southbound travel lane slabs in the vicinity of the intersection with Cloverdale Avenue.

Notice to Proceed Date: September 25, 2017

Anticipated Completion Date: February 21, 2018

Prepared By:



C. Jeremy Noll, PE, CME
Resident Engineer
Environmental Resolutions, Inc.



**ERIAL-CLEMENTON ROAD (CR 703)
RECONSTRUCTION PROJECT – PHASE I
ERIAL-NEW BROOKLYN ROAD (CR 706) TO TURNSEVILLE-HICKSTOWN ROAD (CR
688) AND THE VICINITY OF CLOVERDALE AVENUE
ERI Job # 30750 44
Township of Gloucester and Borough of Pine Hill
County of Camden, New Jersey**

**WEEKLY PROGRESS REPORT #5
October 30, 2017 to November 3, 2017**



Figure: 1 – Installation of reinforcement and expansion joint material prior to the installation of concrete surface course in the southbound travel lane in the vicinity of the intersection with Cloverdale Avenue



Figure: 2 – Installation of 8” thick concrete surface course in the southbound travel lane in the vicinity of the intersection with Cloverdale Avenue



Figure: 3 – Installation of 8” thick concrete surface course in the southbound travel lane in the vicinity of the intersection with Cloverdale Avenue

Work Completed the Week of October 30, 2017:

South State, Inc. continued the full depth reconstruction of the concrete roadway in the vicinity of the intersection with Cloverdale Avenue. South State installed 583.3 square yards of 8” thick, reinforced concrete surface course in the southbound travel lane.

#16: Police Uniform Law Enforcement Officer – 80 Hours

#28: Concrete Surface Course, 8” Thick – 583.3 SY

Anticipated Work for the Week of November 6, 2017:

South State, Inc. will install the concrete sidewalk and ADA ramps along the southbound lane in the vicinity of Cloverdale Avenue.

Notice to Proceed Date: September 25, 2017

Anticipated Completion Date: February 21, 2018

Prepared By:

A handwritten signature in blue ink, appearing to read "C. J. Noll".

C. Jeremy Noll, PE, CME
Resident Engineer
Environmental Resolutions, Inc.



**ERIAL-CLEMENTON ROAD (CR 703)
RECONSTRUCTION PROJECT – PHASE I
ERIAL-NEW BROOKLYN ROAD (CR 706) TO TURNSEVILLE-HICKSTOWN ROAD (CR
688) AND THE VICINITY OF CLOVERDALE AVENUE
ERI Job # 30750 44
Township of Gloucester and Borough of Pine Hill
County of Camden, New Jersey**

**WEEKLY PROGRESS REPORT #6
November 6, 2017 to November 10, 2017**



Figure: 1 – Installation of concrete sidewalk and driveway apron along the southbound lane in the vicinity of the intersection with Cloverdale Avenue



Figure: 2 – Installation of concrete sidewalk along the southbound travel lane in the vicinity of the intersection with Cloverdale Avenue



Figure: 3 – Removal of existing concrete roadway in the northbound lane in the vicinity of the intersection with Cloverdale Avenue

Work Completed the Week of November 6, 2017:

South State, Inc. continued the installation of concrete improvements along the southbound lane in the vicinity of the intersection with Cloverdale Avenue. South State installed 178.8 square yards of concrete sidewalk, 41.2 square yards of concrete driveway, 33 linear feet of 9” x 18” concrete curb, and 116 linear feet of 6” x 18” concrete curb. South State then began the removal of the existing concrete roadway in the northbound lane. South State removed 699.6 square yards of existing concrete surface course.

#16: Police Uniform Law Enforcement Officer – 64 Hours

#22: Removal of Pavement – 699.6 SY

#44: Concrete Sidewalk, 4” Thick – 178.8 SY

#46: Concrete Driveway, Reinforced, 6” Thick – 41.2 SY

#48: 9” x 18” Concrete Vertical Curb – 33 LF

#67: 6” x 18” Concrete Vertical Curb – 116 LF

Anticipated Work for the Week of November 10, 2017:

South State, Inc. will complete the installation of the concrete improvements along the southbound lane in the vicinity of Cloverdale Avenue. They will also begin installation of concrete curb along the northbound lane.

Notice to Proceed Date: September 25, 2017

Anticipated Completion Date: February 21, 2018

Prepared By:

A handwritten signature in blue ink, appearing to read "C. Jeremy Noll". The signature is stylized and written in a cursive-like font.

C. Jeremy Noll, PE, CME
Resident Engineer
Environmental Resolutions, Inc.



**ERIAL-CLEMENTON ROAD (CR 703)
RECONSTRUCTION PROJECT – PHASE I
ERIAL-NEW BROOKLYN ROAD (CR 706) TO TURNSEVILLE-HICKSTOWN ROAD (CR
688) AND THE VICINITY OF CLOVERDALE AVENUE
ERI Job # 30750 44
Township of Gloucester and Borough of Pine Hill
County of Camden, New Jersey**

**WEEKLY PROGRESS REPORT #7
November 13, 2017 to November 17, 2017**



Figure: 1 – Reconstruction of existing drainage structure along the northbound lane at the intersection with Cloverdale Avenue



Figure: 2 – Installation of concrete curb along the northbound lane between Woodburn Avenue and Cloverdale Avenue



Figure: 3 – Installation of 8" thick dense graded aggregate along the northbound lane between Woodburn Avenue and Cloverdale Avenue

Work Completed the Week of November 13, 2017:

South State, Inc. completed the installation of the concrete vertical curb along the northbound lane in the vicinity of the intersection with Cloverdale Avenue. South State installed 420 linear feet of 9” x 18” concrete curb. South State also began the reconstruction of the existing drainage structure in the northbound lane at the intersection with Cloverdale Avenue. South State then installed 1,050 square yards of 8” thick dense graded aggregate base course in the northbound lane. South State also excavated 262.5 cubic yards of existing roadway base in preparation of the installation of the dense graded aggregate.

- #16: Police Uniform Law Enforcement Officer – 64 Hours**
- #20: Excavation, Unclassified – 262.5 CY**
- #23: Dense Graded Aggregate Base Course, 8” Thick – 1050 SY**
- #48: 9” x 18” Concrete Vertical Curb – 420 LF**

Anticipated Work for the Week of November 20, 2017:

South State, Inc. will install 8” concrete surface course in the northbound shoulder in the vicinity of the intersection with Cloverdale Avenue. South State will also complete the reconstruction of the existing drainage structure reconstruction in the northbound lane at the intersection with Cloverdale Avenue.

Notice to Proceed Date: September 25, 2017

Anticipated Completion Date: February 21, 2018

Prepared By:

A handwritten signature in blue ink, appearing to read "C. Jeremy Noll".

C. Jeremy Noll, PE, CME
Resident Engineer
Environmental Resolutions, Inc.



**ERIAL-CLEMENTON ROAD (CR 703)
RECONSTRUCTION PROJECT – PHASE I
ERIAL-NEW BROOKLYN ROAD (CR 706) TO TURNSEVILLE-HICKSTOWN ROAD (CR
688) AND THE VICINITY OF CLOVERDALE AVENUE
ERI Job # 30750 44
Township of Gloucester and Borough of Pine Hill
County of Camden, New Jersey**

**WEEKLY PROGRESS REPORT #8
November 20, 2017 to November 24, 2017**



Figure: 1 – Installation of dowels in preparation of concrete surface course installation in the northbound shoulder in the vicinity of the intersection with Cloverdale Avenue



Figure: 2 – Installation of concrete surface course in the northbound shoulder in the vicinity of the intersection with Cloverdale Avenue



Figure: 3 – Installation of thermo blankets to protect the newly installed concrete surface course in the northbound shoulder in the vicinity of the intersection with Cloverdale Avenue

Work Completed the Week of November 20, 2017:

South State, Inc. completed the installation of the concrete vertical curb along the northbound lane in the vicinity of the intersection with Cloverdale Avenue. South State installed 36 linear feet of 9” x 18” concrete curb. South State also completed the reconstruction of the existing drainage structure in the northbound lane at the intersection with Cloverdale Avenue. South State then installed 480 square yards of 8” thick concrete surface course in the northbound shoulder. Due to cold weather conditions, South State covered the newly poured concrete surface course with thermal blankets. South State did not work on Thursday, November 23rd and Friday, November 24th due to the Thanksgiving Holiday.

#16: Police Uniform Law Enforcement Officer – 48 Hours

#28: Concrete Surface Course, 8” Thick – 480 SY

#41: Reconstruct Drainage Structure, Using New Castings – 1 Unit

#48: 9” x 18” Concrete Vertical Curb – 36 LF

Anticipated Work for the Week of November 27, 2017:

South State, Inc. will install 8” concrete surface course in the northbound travel lane in the vicinity of the intersection with Cloverdale Avenue. South State will then begin the installation of concrete sidewalk and ADA improvements along the northbound lane in the same area.

Notice to Proceed Date: September 25, 2017

Anticipated Completion Date: February 21, 2018

Prepared By:

A handwritten signature in blue ink, appearing to read "C. J. Noll".

C. Jeremy Noll, PE, CME
Resident Engineer
Environmental Resolutions, Inc.



**ERIAL-CLEMENTON ROAD (CR 703)
RECONSTRUCTION PROJECT – PHASE I
ERIAL-NEW BROOKLYN ROAD (CR 706) TO TURNSERVILLE-HICKSTOWN ROAD (CR
688) AND THE VICINITY OF CLOVERDALE AVENUE
ERI Job # 30750 44
Township of Gloucester and Borough of Pine Hill
County of Camden, New Jersey**

**WEEKLY PROGRESS REPORT #9
November 27, 2017 to December 1, 2017**



Figure: 1 – Wire mesh and dowel reinforcement of concrete surface course installation in the northbound travel lane in the vicinity of the intersection with Cloverdale Avenue



Figure: 2 – Installation of concrete surface course in the northbound travel lane in the vicinity of the intersection with Cloverdale Avenue



Figure: 3 – Finishing of concrete surface course in the northbound travel lane in the vicinity of the intersection with Cloverdale Avenue

Work Completed the Week of November 27, 2017:

South State, Inc. completed the full depth reconstruction of the concrete road in the vicinity of the intersection with Cloverdale Avenue. South State installed 600 square yards of 8” thick concrete surface course in the northbound travel lane. Due to cold weather conditions, South State covered the newly poured concrete surface course with thermal blankets. South State did not work on Friday, December 1st to allow for the newly installed concrete surface course to cure.

#16: Police Uniform Law Enforcement Officer – 64 Hours

#28: Concrete Surface Course, 8” Thick – 600 SY

Anticipated Work for the Week of December 4, 2017:

South State, Inc. will complete the concrete improvements along the northbound lane in the vicinity of the intersection with Cloverdale Avenue. The improvements include the installation of concrete sidewalk, ADA ramps, and concrete driveway aprons. South State will then begin the full depth reconstruction of both sides of Cloverdale Avenue with hot mix asphalt.

Notice to Proceed Date: September 25, 2017

Anticipated Completion Date: February 21, 2018

Prepared By:

A handwritten signature in blue ink, appearing to read "C. J. Noll".

C. Jeremy Noll, PE, CME
Resident Engineer
Environmental Resolutions, Inc.



**ERIAL-CLEMENTON ROAD (CR 703)
RECONSTRUCTION PROJECT – PHASE I
ERIAL-NEW BROOKLYN ROAD (CR 706) TO TURNSEVILLE-HICKSTOWN ROAD (CR
688) AND THE VICINITY OF CLOVERDALE AVENUE
ERI Job # 30750 44
Township of Gloucester and Borough of Pine Hill
County of Camden, New Jersey**

**WEEKLY PROGRESS REPORT #10
December 4, 2017 to December 8, 2017**



*Figure: 1 – Installation of concrete sidewalk along the northbound lane at the intersection with
Cloverdale Avenue*



Figure: 2 – Excavation of the existing roadway at the intersection with Cloverdale Avenue



Figure: 3 – Installation of HMA 19M64 base course at the intersection with Woodburn Avenue

Work Completed the Week of December 4, 2017:

South State, Inc's concrete crew completed all of the concrete improvements in the Pine Hill portion of the project. The concrete crew installed 277.6 square yards of concrete sidewalk, 24.5 square yards of concrete driveway, 2.7 square yards of detectable warning surface, 71 linear feet of 9" x 18" concrete curb, and 12 linear feet of 6" x 18" concrete curb along the northbound travel lane. Due to cold weather conditions, South State covered the newly poured concrete with thermal blankets. The paving crew arrived on site for the full depth reconstruction of the intersections with Cloverdale Avenue and Woodburn Avenue. The paving crew removed 42.6 square yards of existing pavement, installed 80 square yards of 8" thick dense graded aggregate, 62.02 tons of HMA 19M64 base course, and 48.35 tons of HMA 9.5M64 surface course.

- #16: Police Uniform Law Enforcement Officer – 16 Hours**
- #22: Removal of Pavement – 42.6 SY**
- #26: Hot Mix Asphalt 9.5M64 Surface Course – 48.35 Tons**
- #27: Hot Mix Asphalt 19M64 Base Course – 62.02 Tons**
- #44: Concrete Sidewalk, 4" Thick – 277.6 SY**
- #46: Concrete Driveway, Reinforced, 6" Thick – 24.5 SY**
- #47: Detectable Warning Surface – 2.7 SY**
- #48: 9" x 18" Concrete Vertical Curb – 71 LF**
- #67: 6" x 18" Concrete Vertical Curb – 12 LF**

Anticipated Work for the Week of December 11, 2017:

Due to cold weather conditions, the project will be shut down for the winter. The project will resume in the spring of 2018 when weather conditions are suitable. Prior to resuming construction, South State will provide an updated construction schedule and will re-notify all businesses and residents within the project area.

Notice to Proceed Date: September 25, 2017

Anticipated Completion Date: Spring, 2018

Prepared By:



C. Jeremy Noll, PE, CME
Resident Engineer
Environmental Resolutions, Inc.



**ERIAL-CLEMENTON ROAD (CR 703)
RECONSTRUCTION PROJECT – PHASE I
ERIAL-NEW BROOKLYN ROAD (CR 706) TO TURNSEVILLE-HICKSTOWN ROAD (CR
688) AND THE VICINITY OF CLOVERDALE AVENUE
ERI Job # 30750 44
Township of Gloucester and Borough of Pine Hill
County of Camden, New Jersey**

**WEEKLY PROGRESS REPORT #11
April 16, 2018 to April 20, 2018**



Figure: 1 – Installation of ADA ramp along the southbound lane at the intersection with Woodburn Avenue



Figure: 2 – Full depth concrete slab repair along the northbound lane between Erial - New Brooklyn Road and Pleasantview Drive



Figure: 3 – Full depth concrete slab repair along the northbound lane between Erial - New Brooklyn Road and Pleasantview Drive

Work Completed the Week of April 16, 2018:

South State, Inc. remobilized to complete the project after the winter shut down per the Camden County Engineer's Office on December 8, 2017. South State, Inc's concrete crew completed the remaining miscellaneous concrete improvements in the Pine Hill portion of the project. The concrete crew installed 33.1 square yards of concrete sidewalk, 2.66 square yards of detectable warning surface, and 187 linear feet of 6" x 18" concrete curb. The concrete crew then began the full depth concrete slab repairs in the Gloucester Township portion of the project. The concrete poured 90.2 SY of full depth concrete repair with class V concrete mix along the northbound lane between Erial – New Brooklyn Road to Pleasantview Drive.

#16: Police Uniform Law Enforcement Officer – 96 Hours

#33: Full Depth Concrete Repair, Concrete Class V – 90.6 SY

#44: Concrete Sidewalk, 4" Thick – 33.1 SY

#47: Detectable Warning Surface – 2.66 SY

#67: 6" x 18" Concrete Vertical Curb – 187 LF

Anticipated Work for the Week of April 23, 2018:

South State's concrete crew will continue full depth slab replacement in the northbound lane between Pleasantview Drive and Hickstown – Turnersville Road before beginning slab repair in the southbound lane.

Spring Notice to Proceed Date: April 16, 2018

Anticipated Completion Date: June 29, 2018

Prepared By:

A handwritten signature in blue ink, appearing to read "C. J. Noll".

C. Jeremy Noll, PE, CME
Resident Engineer
Environmental Resolutions, Inc.



**ERIAL-CLEMENTON ROAD (CR 703)
RECONSTRUCTION PROJECT – PHASE I
ERIAL-NEW BROOKLYN ROAD (CR 706) TO TURNSEVILLE-HICKSTOWN ROAD (CR
688) AND THE VICINITY OF CLOVERDALE AVENUE
ERI Job # 30750 44
Township of Gloucester and Borough of Pine Hill
County of Camden, New Jersey**

**WEEKLY PROGRESS REPORT #12
April 23, 2018 to April 27, 2018**



Figure: 1 – Preparation of full depth concrete slab repair along the northbound lane between Shultz Avenue and Bromley Drive



Figure: 2 – Topsoil and seed restoration at the newly installed ADA ramp at the intersection with Bromley Drive



Figure: 3 – Full depth concrete slab repair along the northbound lane between Pleasantview Drive and Lee Lane

Work Completed the Week of April 23, 2018:

South State, Inc's concrete crew continued the full depth concrete slab repairs in the Gloucester Township portion of the project. The concrete crew poured 337.5 SY of full depth concrete repair with class V concrete mix along the northbound lane between Pleasantview Drive and Hickstown – Turnersville Road.

#16: Police Uniform Law Enforcement Officer – 48 Hours

#33: Full Depth Concrete Repair, Concrete Class V – 337.5 SY

Anticipated Work for the Week of April 30, 2018:

South State's concrete crew will complete the full depth slab replacement in the northbound lane between Bromley Drive and Hickstown – Turnersville Road and then begin full depth slab repair in the southbound lane from Hickstown – Turnersville Road towards Erial - New Brooklyn.

Spring Notice to Proceed Date: April 16, 2018

Anticipated Completion Date: June 29, 2018

Prepared By:

A handwritten signature in blue ink, appearing to read "C. J. Noll".

C. Jeremy Noll, PE, CME
Resident Engineer
Environmental Resolutions, Inc.



**ERIAL-CLEMENTON ROAD (CR 703)
RECONSTRUCTION PROJECT – PHASE I
ERIAL-NEW BROOKLYN ROAD (CR 706) TO TURNSEVILLE-HICKSTOWN ROAD (CR
688) AND THE VICINITY OF CLOVERDALE AVENUE
ERI Job # 30750 44
Township of Gloucester and Borough of Pine Hill
County of Camden, New Jersey**

**WEEKLY PROGRESS REPORT #13
April 30, 2018 to May 4, 2018**



Figure: 1 – Preparation of full depth concrete slab repair along the southbound lane between Bromley Drive and Shultz Avenue



Figure: 2 – Full depth concrete slab repair along the southbound lane between Bromley Drive and Shultz Avenue



Figure: 3 – Full depth concrete slab repair along the southbound lane at the intersection with Pleasantview Drive

Work Completed the Week of April 30, 2018:

South State, Inc's concrete crew continued the full depth concrete slab repairs in the Gloucester Township portion of the project. The concrete crew poured 467.4 SY of full depth concrete repair with class V concrete mix along the southbound lane between Hickstown – Turnersville Road and Erial – New Brooklyn Road. The entire full depth slab repair is complete with the exception of the slabs around the inlets to be reconstructed.

#16: Police Uniform Law Enforcement Officer – 80 Hours

#33: Full Depth Concrete Repair, Concrete Class V – 467.4 SY

Anticipated Work for the Week of May 4, 2018:

South State's concrete crew will complete all of the inlet reconstruction and resetting work within the Gloucester Township portion of the project. They will then complete the remaining full depth slab replacement adjacent to the inlets to be reconstructed and reset.

Spring Notice to Proceed Date: April 16, 2018

Anticipated Completion Date: June 29, 2018

Prepared By:

A handwritten signature in blue ink, appearing to read "C. J. Noll".

C. Jeremy Noll, PE, CME
Resident Engineer
Environmental Resolutions, Inc.



**ERIAL-CLEMENTON ROAD (CR 703)
RECONSTRUCTION PROJECT – PHASE I
ERIAL-NEW BROOKLYN ROAD (CR 706) TO TURNSEVILLE-HICKSTOWN ROAD (CR
688) AND THE VICINITY OF CLOVERDALE AVENUE
ERI Job # 30750 44
Township of Gloucester and Borough of Pine Hill
County of Camden, New Jersey**

**WEEKLY PROGRESS REPORT #14
May 7, 2018 to May 11, 2018**

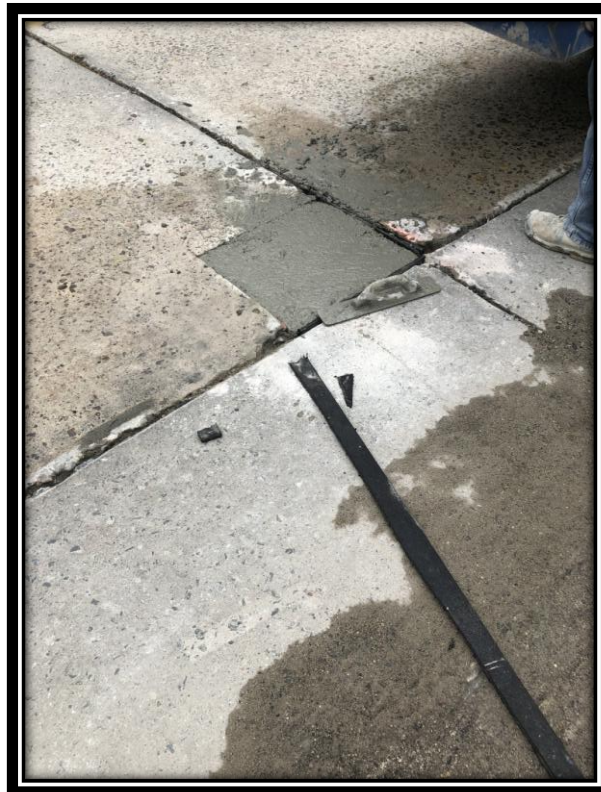


Figure: 1 – Installation of partial depth concrete slab repair along the southbound lane between Turnersville - Hickstown Road and Bromley Drive



Figure: 2 – Inlet reconstruction including a new casting along the southbound lane between Bromley Drive and Shultz Avenue



Figure: 3 – Removal of existing concrete slab in preparation of full depth concrete slab repair along the southbound lane between Bromley Drive and Shultz Avenue

Work Completed the Week of May 7, 2018:

South State, Inc's concrete crew completed the inlet repair in the Gloucester Township portion of the project. South State reset 1 inlet with the existing casting, reset 2 inlets using new castings, and reconstructed 5 inlets using new castings. The concrete crew then completed the remaining full depth concrete slab repairs adjacent to the newly repaired inlets. The concrete crew poured 67.5 SY of full depth concrete repair with class V concrete mix along both the northbound and southbound lanes between Hickstown – Turnersville Road and Erial – New Brooklyn Road. The entire full depth slab repair is now complete. South State then began the partial depth concrete slab repairs in the southbound lane between Hickstown – Turnersville Road and Erial – New Brooklyn Road. The concrete crew poured 30.72 SY of full depth concrete repair

- #16: Police Uniform Law Enforcement Officer – 80 Hours**
- #32: Partial Depth Concrete Repair – 30.72 SY**
- #33: Full Depth Concrete Repair, Concrete Class V – 67.5 SY**
- #40: Reset Existing Casting – 1 Unit**
- #S2: Reset Inlet Using New Casting – 2 Units**
- #S3: Reconstruct Inlet Using New Casting – 5 Units**

Anticipated Work for the Week of May 14, 2018:

South State's concrete crew will complete the partial depth repairs in the Gloucester Township portion of the project.

Spring Notice to Proceed Date: April 16, 2018

Anticipated Completion Date: June 29, 2018

Prepared By:



C. Jeremy Noll, PE, CME
Resident Engineer
Environmental Resolutions, Inc.



**ERIAL-CLEMENTON ROAD (CR 703)
RECONSTRUCTION PROJECT – PHASE I
ERIAL-NEW BROOKLYN ROAD (CR 706) TO TURNSEVILLE-HICKSTOWN ROAD (CR
688) AND THE VICINITY OF CLOVERDALE AVENUE
ERI Job # 30750 44
Township of Gloucester and Borough of Pine Hill
County of Camden, New Jersey**

**WEEKLY PROGRESS REPORT #15
May 14, 2018 to May 18, 2018**



Figure: 1 – Partial depth concrete slab repairs in the southbound lane approaching the intersection with Erial New Brooklyn Road



Figure: 2 – Partial depth concrete slab repairs in the northbound lane between Erial New Brooklyn Road and Pleasantview Drive



Figure: 3 – Partial depth concrete slab repairs in the southbound lane between Pleasantview Drive and Erial New Brooklyn Road

Work Completed the Week of May 14, 2018:

South State, Inc's concrete crew completed the partial depth concrete slab repairs in the southbound lane between Turnersville Hickstown Road and Erial New Brooklyn Road and then began the partial depth repairs in the northbound lane between Erial Road New Brooklyn and Pleasantview Drive. The concrete crew poured 27.6 SY of partial depth concrete repair. Due to weather conditions, South State did not work on Thursday, May 17th, 2018.

#16: Police Uniform Law Enforcement Officer – 40 Hours

#32: Partial Depth Concrete Repair – 27.6 SY

Anticipated Work for the Week of May 21, 2018:

South State's concrete crew will complete the partial depth repairs in the northbound lane between Pleasantview Drive and Turnersville Hickstown Road. South State's diamond grinding subcontractor will mobilize to the site on Tuesday, May 22nd, 2018 and begin grinding the concrete surface course in the Gloucester Township portion of the project.

Spring Notice to Proceed Date: April 16, 2018

Anticipated Completion Date: June 29, 2018

Prepared By:

A handwritten signature in blue ink, appearing to read "C. J. Noll".

C. Jeremy Noll, PE, CME
Resident Engineer
Environmental Resolutions, Inc.



**ERIAL-CLEMENTON ROAD (CR 703)
RECONSTRUCTION PROJECT – PHASE I
ERIAL-NEW BROOKLYN ROAD (CR 706) TO TURNSEVILLE-HICKSTOWN ROAD (CR
688) AND THE VICINITY OF CLOVERDALE AVENUE
ERI Job # 30750 44
Township of Gloucester and Borough of Pine Hill
County of Camden, New Jersey**

**WEEKLY PROGRESS REPORT #16
May 21, 2018 to May 25, 2018**



Figure: 1 – Partial depth concrete slab repairs in the northbound lane approaching the intersection with Lee Lane



Figure: 2 – Diamond grinding of the concrete surface course in the northbound lane between Erial New Brooklyn Road and Pleasantview Drive



Figure: 3 – Partial depth concrete slab repairs in the northbound lane between Danbury Drive and Shultz Avenue

Work Completed the Week of May 21, 2018:

South State, Inc's concrete crew completed the partial depth concrete slab repairs in the northbound lane between Pleasantview Drive and Turnersville Hickstown Road. The concrete crew also completed the remainder of the inlet resets and poured concrete curb adjacent to each reset inlet. The concrete crew poured 34 SY of partial depth concrete repair, 41.5 linear feet of concrete curb, and reset 4 inlets. South State's diamond grinding subcontractor began work in the northbound lane from Erial New Brooklyn Road towards Pleasantview Drive. The subcontractor diamond grinded 1,685 square yards of concrete surface course. South State also had a crew performing topsoil and seed restoration around the newly reset inlets.

#16: Police Uniform Law Enforcement Officer – 80 Hours

#32: Partial Depth Concrete Repair – 34 SY

#35: Diamond Grinding Existing Concrete Pavement – 1,685 SY

#40: Reset Existing Casting – 4 Units

#48: 9" x 18" Concrete Vertical Curb – 41.5 LF

#55: Topsoiling, 4" Thick – 14.2 SY

Anticipated Work for the Week of May 28, 2018:

South State's diamond grinding subcontractor will continue grinding the existing concrete pavement in the northbound lane between Erial New Brooklyn Road and Pleasantview Drive.

Spring Notice to Proceed Date: April 16, 2018

Anticipated Completion Date: August 10, 2018

Prepared By:

A handwritten signature in blue ink, appearing to read "C. J. Noll".

C. Jeremy Noll, PE, CME
Resident Engineer
Environmental Resolutions, Inc.



**ERIAL-CLEMENTON ROAD (CR 703)
RECONSTRUCTION PROJECT – PHASE I
ERIAL-NEW BROOKLYN ROAD (CR 706) TO TURNSEVILLE-HICKSTOWN ROAD (CR
688) AND THE VICINITY OF CLOVERDALE AVENUE
ERI Job # 30750 44
Township of Gloucester and Borough of Pine Hill
County of Camden, New Jersey**

**WEEKLY PROGRESS REPORT #17
May 28, 2018 to June 1, 2018**



Figure: 1 – Resetting of an existing type 'B' inlet casting in the northbound lane approaching the intersection with Turnersville-Hickstown Road

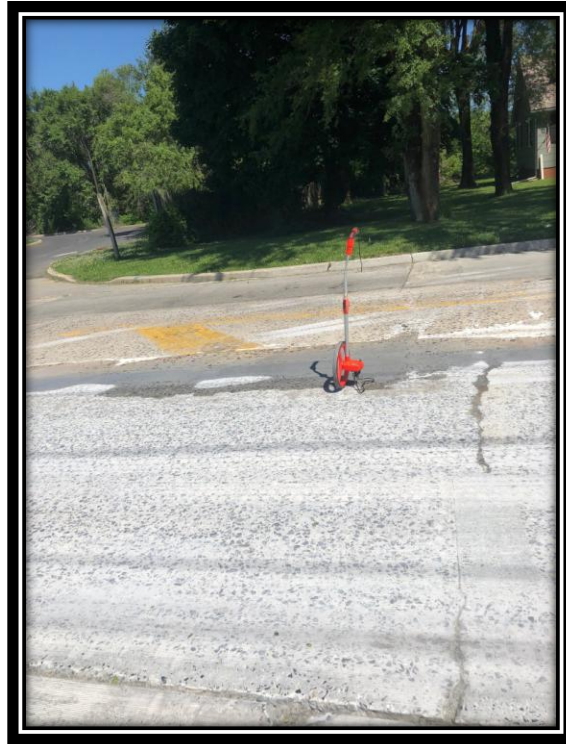


Figure: 2 – Newly diamond ground concrete surface course in the northbound lane between Erial-New Brooklyn Road and Sawood Drive



Figure: 3 – Full depth concrete slab replacement in the southbound lane between Cloverdale Avenue and Buttonwood Avenue

Work Completed the Week of May 28, 2018:

South State, Inc's concrete crew removed and replaced 5 of the previously installed slabs of concrete surface course in the southbound shoulder between Cloverdale Avenue and Buttonwood Avenue. The slabs were replaced because the concrete did not meet the specified requirements. The concrete crew also installed the 35.8 square yards of concrete driveway at 1229 Erial Road and reset 4 type 'B' inlet castings. South State's diamond grinding subcontractor continued work in the northbound lane from Erial-New Brooklyn Road and Danbury Drive. The subcontractor diamond ground 1,850 square yards of concrete surface course.

#16: Police Uniform Law Enforcement Officer – 112 Hours

#35: Diamond Grinding Existing Concrete Pavement – 1,850 SY

#40: Reset Existing Casting – 4 Units

#46: Concrete Driveway, 6" Thick, Reinforced – 35.8 SY

Anticipated Work for the Week of June 4, 2018:

South State's diamond grinding subcontractor will continue grinding the existing concrete pavement in the northbound lane between Danbury Drive and Turnersville-Hickstown Road. South State's concrete crew will complete the retaining wall and grading work between Cloverdale Avenue and Woodburn Avenue.

Spring Notice to Proceed Date: April 16, 2018

Anticipated Completion Date: August 10, 2018

Prepared By:

A handwritten signature in blue ink, appearing to read "C. J. Noll".

C. Jeremy Noll, PE, CME
Resident Engineer
Environmental Resolutions, Inc.



**ERIAL-CLEMENTON ROAD (CR 703)
RECONSTRUCTION PROJECT – PHASE I
ERIAL-NEW BROOKLYN ROAD (CR 706) TO TURNERSVILLE-HICKSTOWN ROAD (CR
688) AND THE VICINITY OF CLOVERDALE AVENUE
ERI Job # 30750 44
Township of Gloucester and Borough of Pine Hill
County of Camden, New Jersey**

**WEEKLY PROGRESS REPORT #22
July 16, 2018 to July 20, 2018**



Figure: 1 – Sawcutting of existing joints in preparation for sealant installation in the northbound lane at the intersection with Erial New Brooklyn Road



Figure: 2 – Cleaning of existing joints in preparation for sealant installation

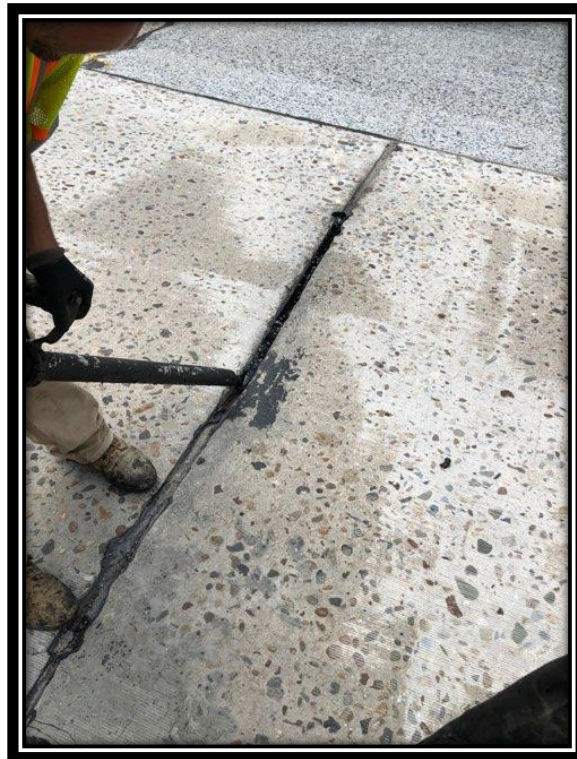


Figure: 3 – Sealing of the existing joints in the northbound lane between Erial New Brooklyn Road and Danbury Drive

Work Completed the Week of July 16, 2018:

South State's joint sealing crew mobilized at the site and began sawcutting, cleaning, and sealing the existing joints between the concrete slabs. South State sealed 6,039.25 linear feet of joints in the northbound lane between Erial - New Brooklyn Road and Danbury Drive.

#16: Police Uniform Law Enforcement Officer – 58 Hours

#36: Sealing Existing Joints in Concrete Pavement – 6,039.25 LF

Anticipated Work for the Week of July 23, 2018:

South State's joint sealing crew will continue sealing joints in the northbound lane between Danbury Drive and Turnersville - Hickstown Road.

Spring Notice to Proceed Date: April 16, 2018

Anticipated Completion Date: August 10, 2018

Prepared By:

A handwritten signature in blue ink, appearing to read "C. J. Noll".

C. Jeremy Noll, PE, CME
Resident Engineer
Environmental Resolutions, Inc.



**ERIAL-CLEMENTON ROAD (CR 703)
RECONSTRUCTION PROJECT – PHASE I
ERIAL-NEW BROOKLYN ROAD (CR 706) TO TURNERSVILLE-HICKSTOWN ROAD (CR
688) AND THE VICINITY OF CLOVERDALE AVENUE
ERI Job # 30750 44
Township of Gloucester and Borough of Pine Hill
County of Camden, New Jersey**

**WEEKLY PROGRESS REPORT #23
July 23, 2018 to July 27, 2018**



Figure: 1 – Sawcutting of existing joints in preparation for sealant installation in the southbound lane between Turnersville Hickstown Road and Erial New Brooklyn Road



Figure: 2 – Cleaning of existing joints in preparation for sealant installation in the southbound lane between Pleasantview Drive and Erial New Brooklyn Road



Figure: 3 – Sealing of the existing joints in the northbound lane between Bromley Drive and Turnersville Hickstown Road

Work Completed the Week of July 23, 2018:

South State’s joint sealing crew continued sawcutting, cleaning, and sealing the existing joints between the concrete slabs. South State completed the sealing of existing joints in both the northbound and southbound lanes in the Gloucester Township portion of the project. South State sealed 9,881.4 linear feet of joints in the Gloucester Township portion of the project.

#16: Police Uniform Law Enforcement Officer – 77 Hours

#36: Sealing Existing Joints in Concrete Pavement – 9,881.4 LF

Anticipated Work for the Week of July 30, 2018:

South State’s joint sealing crew will begin and complete the sealing of existing joints in the Pine Hill Borough portion of the project.

Spring Notice to Proceed Date: April 16, 2018

Anticipated Completion Date: August 10, 2018

Prepared By:

A handwritten signature in blue ink, appearing to read "C. J. Noll".

C. Jeremy Noll, PE, CME
Resident Engineer
Environmental Resolutions, Inc.