

Department of Public Works

Susan Shin-Angulo
Freeholder Liaison

John Wolick
Director



Charles J. DePalma Complex
2311 Egg Harbor Road
Lindenwold, NJ 08021
Phone 856.566.2980
Fax 856.566.2988
highway@camdencounty.com

**Mill and Overlay of Westfield Avenue (CR 610) from Tinsman Avenue (MP 1.57) TO
NJ Route 130 (MP 2.92)
Pennsauken Township, Camden County, New Jersey**

Notice to Proceed issued: August 30, 2019
Project Completion: May 10, 2020
Project Substantial Completion: April 10, 2020.
Project start: September 4, 2019.

**Weekly Progress Report
9-04-2019 through 9-13-2019**

Following Construction Activities took place during above period:

Concrete Curb and Sidewalk:

Concrete Vertical Curb and sidewalks were constructed along Westfield Avenue (Eastbound and Westbound) at the following locations:

- a. Along Deroose Avenue, East and West
- b. Along Sherman Avenue, East and West
- c. Along Entrance of MPW, East
- d. Along Cover Road, East
- e. Along Scovel Avenue, East and West
- f. Along Horner Avenue, East and West
- g. Along Hillcrest Avenue, East – Curb Only
- h. Along Westfield Avenue STA 124+60, RT – across from Deroose Avenue.

Two Week Look Ahead:

Construction of Concrete Vertical Curb and Sidewalk will continue along Westfield Avenue.

Biweekly Progress Meeting:

Biweekly Progress Meeting 01 was held on September 13, 2019 in the field.

Prepared By:
Guvant Mistry

Resident Engineer



Figure 1: Concrete Curb and Sidewalk Along Derosse Avenue, West



Figure 2: Concrete Curb and Sidewalk Along Derosse Avenue, East



Figure 3: Concrete Sidewalk along Entrance of MPW, East



Figure 4: Concrete Curb and Sidewalk along Cove Road, East

Susan Shin-Angulo
Freeholder Liaison

2311 Egg Harbor Road
Lindenwold, NJ 08021
Phone 856.566.2980
Fax 856.566.2988

John Wolick
Director

highway@camdencounty.com



Figure 5: Concrete Curb and Sidewalk along Scovel Avenue, East



Figure 6: Concrete Curb and Sidewalk along Scovel Avenue, West

Susan Shin-Angulo
Freeholder Liaison

2311 Egg Harbor Road
Lindenwold, NJ 08021
Phone 856.566.2980
Fax 856.566.2988

John Wolick
Director

highway@camdencounty.com



Figure 7: Concrete Curb and Sidewalk along Sherman Ave, West side



Figure 8: Concrete Curb and Sidewalk along Sherman Ave, East

Susan Shin-Angulo
Freeholder Liaison

2311 Egg Harbor Road
Lindenwold, NJ 08021
Phone 856.566.2980
Fax 856.566.2988

John Wolick
Director

highway@camdencounty.com



Figure 9: Concrete Curb and Sidewalk along Horner Ave, East



Figure 10: Concrete Curb and Sidewalk along Horner Ave, West



Figure 11: Concrete Curb and Sidewalk Along Hollinshead Ave, East



Figure 12: Concrete Curb and Sidewalk along Westfield Ave, STA 124+60 Right

Department of Public Works

Susan Shin-Angulo
Freeholder Liaison

John Wolick
Director



Charles J. DePalma Complex
2311 Egg Harbor Road
Lindenwold, NJ 08021
Phone 856.566.2980
Fax 856.566.2988
highway@camdencounty.com

**Mill and Overlay of Westfield Avenue (CR 610) from Tinsman Avenue (MP 1.57) TO
NJ Route 130 (MP 2.92)
Pennsauken Township, Camden County, New Jersey**

Notice to Proceed issued: August 30, 2019
Project Completion: May 10, 2020
Project Substantial Completion: April 10, 2020.
Project start: September 4, 2019.

**Weekly Progress Report
9-16-2019 through 9-20-2019**

Following Construction Activities took place during above period:

Concrete Curb and Sidewalk:

Concrete Vertical Curb and sidewalks were constructed along Westfield Avenue (Eastbound and Westbound) at the following locations:

- a. Along Cove Road, West
- b. Along Hollinshead Avenue, West
- c. Along Gross Avenue, East and West
- d. Along Merchantville Avenue, East and West
- e. Along Springfield Avenue, East and West
- f. Along Lexington Avenue, East and West

Two Week Look Ahead:

Construction of Concrete Vertical Curb and Sidewalk will continue along Westfield Avenue.

Prepared By:
Guvant Mistry
Resident Engineer



Figure 1: Concrete Curb and Sidewalk along Cove Road, West



Figure 2: Concrete Curb and Sidewalk along Hollinshead Avenue, West



Figure 3: Concrete Curb and Sidewalk along Gross Avenue, East

Susan Shin-Angulo
Freeholder Liaison

2311 Egg Harbor Road
Lindenwold, NJ 08021
Phone 856.566.2980
Fax 856.566.2988

John Wolick
Director

highway@camdencounty.com



Figure 4: Concrete Curb and Sidewalk along Gross Avenue, West



Susan Shin-Angulo
Freeholder Liaison

2311 Egg Harbor Road
Lindenwold, NJ 08021
Phone 856.566.2980
Fax 856.566.2988

John Wolick
Director

highway@camdencounty.com

Figure 5: Concrete Curb and Sidewalk along Merchantville Avenue, East



Figure 6: Concrete Curb and Sidewalk along Merchantville Avenue, West



Figure 7: Concrete Curb and Sidewalk along Springfield Avenue, West



Figure 8: Concrete Curb and Sidewalk along Springfield Avenue, West



Figure 9: Concrete Curb and Sidewalk along Lexington Avenue, East



Figure 10: Concrete Curb and Sidewalk along Lexington Avenue, West

Department of Public Works

Susan Shin-Angulo
Freeholder Liaison

John Wolick
Director



Charles J. DePalma Complex
2311 Egg Harbor Road
Lindenwold, NJ 08021
Phone 856.566.2980
Fax 856.566.2988
highway@camdencounty.com

**Mill and Overlay of Westfield Avenue (CR 610) from Tinsman Avenue (MP 1.57) TO
NJ Route 130 (MP 2.92)
Pennsauken Township, Camden County, New Jersey**

Notice to Proceed issued: August 30, 2019
Project Completion: May 10, 2020
Project Substantial Completion: April 10, 2020.
Project start: September 4, 2019.

**Weekly Progress Report
9-23-2019 through 9-27-2019**

Following Construction Activities took place during above period:

Concrete Curb and Sidewalk:

Concrete Vertical Curb and sidewalks were constructed along Westfield Avenue (Eastbound and Westbound) at the following locations:

- a. Along Lexington Avenue, West.
- b. Topsoil and Asphalt was placed around Curb and Sidewalk.

Two Week Look Ahead:

- a. Construction of Concrete Vertical Curb and Sidewalk will continue along Westfield Avenue.
- b. Construction of Drainage will start.

Biweekly Progress Meeting:

Biweekly Progress Meeting 02 was held on September 27, 2019 in the field.

Prepared By:
Guvant Mistry
Resident Engineer

Department of Public Works
Complex

Susan Shin-Angulo
Freeholder Liaison

John Wolick
Director



Charles J. DePalma

2311 Egg Harbor Road
Lindenwold, NJ 08021
Phone 856.566.2980
Fax 856.566.2988

highway@camdencounty.com



Figure 1: Sidewalk completed along Lexington Avenue West

Susan Shin-Angulo
Freeholder Liaison

2311 Egg Harbor Road
Lindenwood, NJ 08021
Phone 856.566.2980
Fax 856.566.2988

John Wolick
Director

highway@camdencounty.com



Figure 2: Topsoil placement around Curb and Sidewalk at Derosse Avenue, East



Figure 3: Asphalt at Sidewalk along Westfield Avenue, RT STA 124+75

Susan Shin-Angulo
Freeholder Liaison

2311 Egg Harbor Road
Lindenwold, NJ 08021
Phone 856.566.2980
Fax 856.566.2988

John Wolick
Director

highway@camdencounty.com



Figure 4: Topsoil placement along Sidewalk and Curb at Sherman Avenue, East



Figure 5: Topsoil and Asphalt along sidewalk and Curb at Sherman Avenue, West

Susan Shin-Angulo
Freeholder Liaison

2311 Egg Harbor Road
Lindenwold, NJ 08021
Phone 856.566.2980
Fax 856.566.2988

John Wolick
Director

highway@camdencounty.com



Figure 6: Topsoil around sidewalk at Entrance of MWPC, East



Figure 7: Topsoil around Curb and Sidewalk along Cove Road, East

Susan Shin-Angulo
Freeholder Liaison

2311 Egg Harbor Road
Lindenwold, NJ 08021
Phone 856.566.2980
Fax 856.566.2988

John Wolick
Director

highway@camdencounty.com



Figure 8: Topsoil around Curb and Sidewalk along Scovel Ave, West



Figure 9: Asphalt around Sidewalk along Horner Avenue, East

Department of Public Works
Complex



Charles J. DePalma

Susan Shin-Angulo
Freeholder Liaison

2311 Egg Harbor Road
Lindenwold, NJ 08021
Phone 856.566.2980
Fax 856.566.2988

John Wolick
Director

highway@camdencounty.com



Figure 10: Asphalt around Curb Sidewalk along Horner Avenue, West



**Mill and Overlay of Westfield Avenue (CR 610) from Tinsman Avenue (MP 1.57) TO
NJ Route 130 (MP 2.92)
Pennsauken Township, Camden County, New Jersey**

Notice to Proceed issued: August 30, 2019
Project Completion: May 10, 2020
Project Substantial Completion: April 10, 2020.
Project start: September 4, 2019.

**Weekly Progress Report
10-07-2019 through 10-11-2019**

Following Construction Activities took place during above period:

Concrete Curb and Sidewalk:

- a. Contractor was not present at site therefore construction activities were not performed.

Drainage:

- a. Drainage structures were delivered at site on 10/10/2019.
- b. Meeting was held in the field with Drainage installation Team of South State Inc.

Roadway:

- a. Meeting was held in the field with Steven Squibb (Pennsauken Township Engineer) and locations were marked out along Westfield Avenue within project Limit where there were severe humps or dips

Two Week Look Ahead:

- a. Construction of Drainage related activities will start from 10/14/2019 and continue for next two weeks.

Biweekly Progress Meeting:

- a. Biweekly Progress Meeting 03 was held on October 11, 2019 at Pennsauken Township Building.

Department of Public Works
Complex

Susan Shin-Angulo
Freeholder Liaison

John Wolick
Director



Charles J. DePalma

2311 Egg Harbor Road
Lindenwold, NJ 08021
Phone 856.566.2980
Fax 856.566.2988

highway@camdencounty.com

Prepared By:
Guvant Mistry
Resident Engineer



Figure 1: Drainage structures were delivered at site on 10/10/2019.

Department of Public Works
Complex

Susan Shin-Angulo
Freeholder Liaison

John Wolick
Director



Charles J. DePalma

2311 Egg Harbor Road
Lindenwold, NJ 08021
Phone 856.566.2980
Fax 856.566.2988

highway@camdencounty.com



**Mill and Overlay of Westfield Avenue (CR 610) from Tinsman Avenue (MP 1.57) TO NJ Route 130 (MP 2.92)
Pennsauken Township, Camden County, New Jersey**

Notice to Proceed issued: August 30, 2019
Project Completion: May 10, 2020
Project Substantial Completion: April 10, 2020.
Project start: September 4, 2019.

**Weekly Progress Report
10-14-2019 through 10-18-2019**

Following Construction Activities took place during above period:

Concrete Curb and Sidewalk:

- a. Contractor was not present at site therefore construction activities were not performed.

Drainage:

- a. 16" ductile iron pipe was installed along Westfield Avenue, LT from Inlet along Hillcrest Avenue to Inlet Along Westfield Avenue
- b. 16" ductile iron pipe was installed along Westfield Avenue, LT from Inlet along Westfield Avenue to Inlet along Hollinshead Avenue including Installation of Two Manholes 4' diameter with Manhole Frame and cover.
- c. Existing Type B inlet along Hillcrest Avenue West was Reconstructed using new casting, And Curb piece, Type N ECO was installed.
- d. Reinforced concrete pipes were delivered at site.

Roadway:

- a. All Humps were grinding to smooth travel surface, and all potholes were repaired using Asphalt and compacted with walk behind plate compactor.

Two Week Look Ahead:

- a. Construction of Drainage related activities are started from 10/14/2019 and continue for next two weeks.



Figure 1: Installation of 16" Ductile Iron Pipe from Inlet on Hillcrest Avenue to Inlet along Westfield Avenue, LT



Figure 2: Installation of 16" Ductile Iron Pipe from Inlet on Hillcrest Avenue to Inlet along Westfield Avenue, LT



Figure 3: Installation of 16" Ductile Iron Pipe from Inlet on Hillcrest Avenue to Inlet along Westfield Avenue, LT



Figure 4: Installation of 16" DIP from Inlet along Westfield Avenue to Proposed 4' Diameter Manhole



Figure 5: Installation of 16" DIP Along Westfield Avenue from Proposed Manhole to Proposed Manhole at Hollinshead Avenue.



Figure 5: Installation of 16" DIP Along Westfield Avenue from Proposed Manhole to Proposed Manhole at Hollinshead Avenue.



Figure 5: Installation of 16" DIP Along Westfield Avenue from Proposed Manhole to Proposed Manhole at Hollinshead Avenue.



Figure 6: Installation of 16" DIP to Proposed Manhole at Holinshed Avenue



Figure 7: Installation of 16" DIP from Proposed Manhole at Hollingshead Avenue to Inlet Along Hollinshead Avenue



Figure 8: Manhole Cover frame was installed with Manhole Cover



Figure 9: Installation of 16" DIP from Proposed Manhole at Hollingshead Avenue to Inlet Along Hollinshead Avenue



Figure 10: Inlet along Hillcrest Avenue – Reconstructed Inlet Type B using new casting and set curb piece Type N ECO

Susan Shin-Angulo
Freeholder Liaison

2311 Egg Harbor Road
Lindenwold, NJ 08021
Phone 856.566.2980
Fax 856.566.2988

John Wolick
Director

highway@camdencounty.com



Figure 11: Reinforced Concrete Pipes were delivered at Site.



Figure 12: Grinding Humps along Westfield Avenue



Figure 13: Grinding Humps along Westfield Avenue



Figure 14: Repairing Potholes along Westfield Avenue

Department of Public Works
Complex

Susan Shin-Angulo
Freeholder Liaison

John Wolick
Director

Prepared By:
Gunvant Mistry
Resident Engineer



Charles J. DePalma

2311 Egg Harbor Road
Lindenwold, NJ 08021
Phone 856.566.2980
Fax 856.566.2988

highway@camdencounty.com



**Mill and Overlay of Westfield Avenue (CR 610) from Tinsman Avenue (MP 1.57) TO NJ Route 130 (MP 2.92)
Pennsauken Township, Camden County, New Jersey**

Notice to Proceed issued: August 30, 2019
Project Completion: May 10, 2020
Project Substantial Completion: April 10, 2020.
Project start: September 4, 2019.

Weekly Progress Report
10-21-2019 through 10-25-2019

Following Construction Activities took place during above period:

Concrete Curb and Sidewalk:

- a. Contractor was not present at site therefore construction activities were not performed.

Drainage:

- a. Existing Type B inlet along Holinshed Avenue West was Reconstructed using new casting, And Curb piece, Type N ECO was installed.
- b. Curb piece, Type N ECO were installed for three inlets along Westfield Avenue, LT between Hillcrest Avenue and Holinshed Avenue.
- c. 15" Reinforced Concrete Pipe, Class IV was installed across Horner Avenue, LT.
- d. 15" Reinforced Concrete Pipe was installed from inlet along Westfield Avenue to East Inlet along Horner Avenue, LT.
- e. 24" Reinforced Concrete Pipe, Class IV was installed across Westfield Avenue at Hillcrest Avenue.
- f. 18" Reinforced Concrete Pipe was installed along Westfield Avenue, LT Between Hillcrest Avenue and Horner Avenue.

Two Week Look Ahead:

- a. Construction of drainage related activities are started from 10/14/2019 and completed by 11/1/2019.
- b. Construction of concrete curb and sidewalk related activities will start from 11/04/2019.

Biweekly Progress Meeting:

- a. Biweekly Progress Meeting No. 4 was held at Pennsauken Township building.



Figure 1: Existing Type B inlet along Hollinshead Avenue West was Reconstructed using new casting, And Curb piece, Type N ECO was installed.



Figure 2: Curb piece, Type N ECO were installed for three inlets along Westfield Avenue, LT between Hillcrest Avenue and Hollinshead Avenue.



Figure 3: 15" Reinforced Concrete Pipe, Class IV was installed across Horner Avenue, LT.

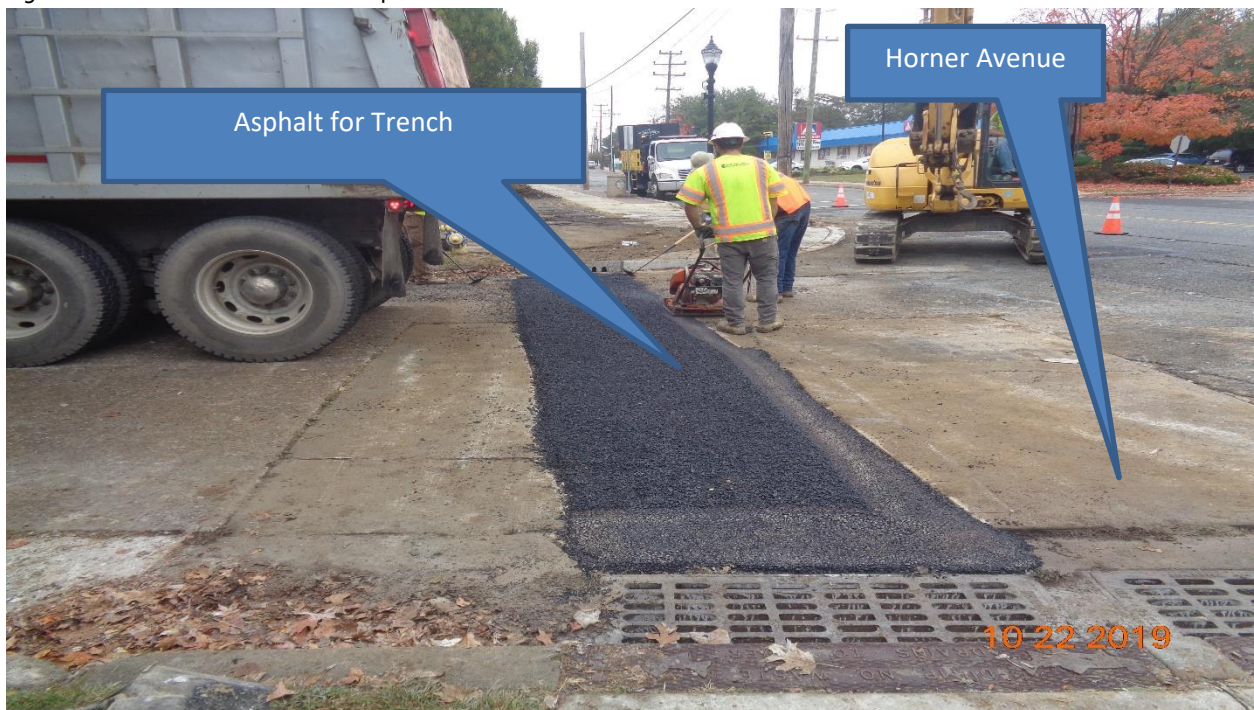


Figure 4: 15" Reinforced Concrete Pipe, Class IV was installed across Horner Avenue, LT.

Susan Shin-Angulo
Freeholder Liaison

2311 Egg Harbor Road
Lindenwold, NJ 08021
Phone 856.566.2980
Fax 856.566.2988

John Wolick
Director

highway@camdencounty.com



Figure 5: 15" Reinforced Concrete Pipe was installed from inlet along Westfield Avenue to East Inlet along Horner Avenue, LT.



Figure 6: 15" Reinforced Concrete Pipe was installed from inlet along Westfield Avenue to East Inlet along Horner Avenue, LT.



Figure 7: 24" Reinforced Concrete Pipe, Class IV was installed across Westfield Avenue at Hillcrest Avenue.



Figure 8: 24" Reinforced Concrete Pipe, Class IV was installed across Westfield Avenue at Hillcrest Avenue.

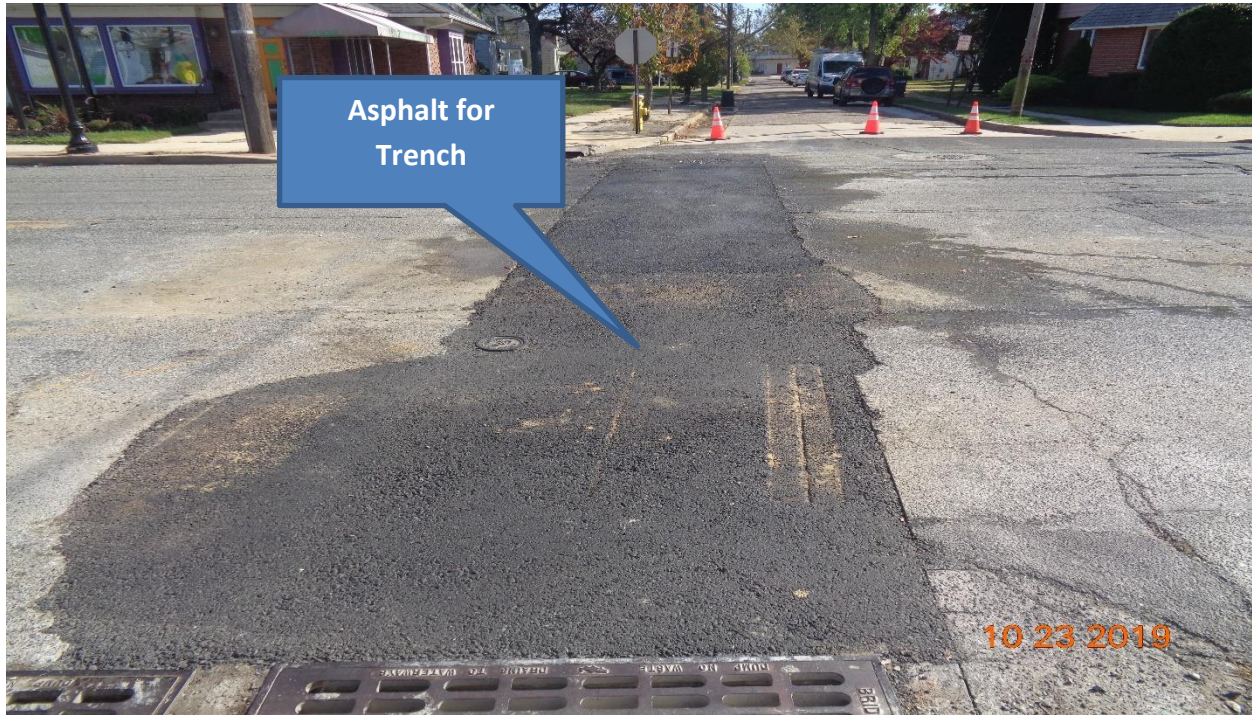


Figure 9: 24" Reinforced Concrete Pipe, Class IV was installed across Westfield Avenue at Hillcrest Avenue.



Figure 10: 18" Reinforced Concrete Pipe was installed along Westfield Avenue, LT Between Hillcrest Avenue and Horner Avenue

Susan Shin-Angulo
Freeholder Liaison

2311 Egg Harbor Road
Lindenwold, NJ 08021
Phone 856.566.2980
Fax 856.566.2988

John Wolick
Director

highway@camdencounty.com

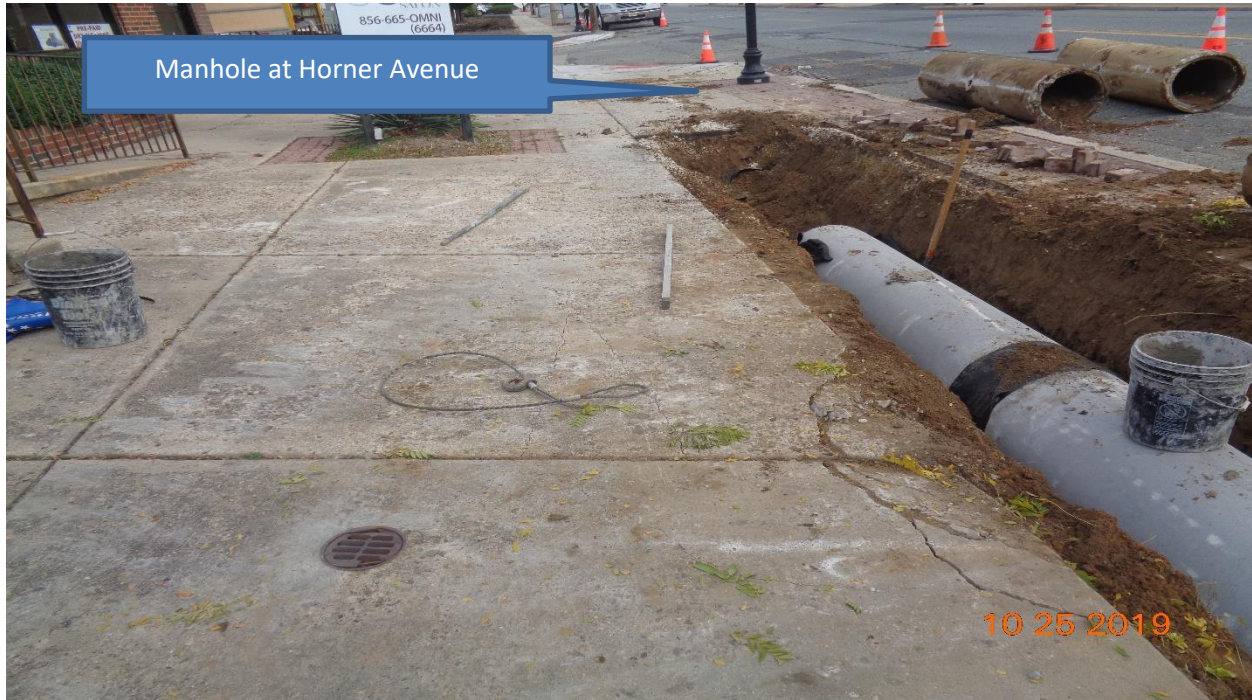


Figure 11: 18" Reinforced Concrete Pipe was installed along Westfield Avenue, LT Between Hillcrest Avenue and Horner Avenue



Figure 11: 18" Reinforced Concrete Pipe was installed along Westfield Avenue, LT Between Hillcrest Avenue and Horner Avenue

Department of Public Works
Complex

Susan Shin-Angulo
Freeholder Liaison

John Wolick
Director



Charles J. DePalma

2311 Egg Harbor Road
Lindenwold, NJ 08021
Phone 856.566.2980
Fax 856.566.2988

highway@camdencounty.com

Prepared By:
Guvant Mistry
Resident Engineer



**Mill and Overlay of Westfield Avenue (CR 610) from Tinsman Avenue (MP 1.57) TO NJ Route 130 (MP 2.92)
Pennsauken Township, Camden County, New Jersey**

Notice to Proceed issued: August 30, 2019
Project Completion: May 10, 2020
Project Substantial Completion: April 10, 2020.
Project start: September 4, 2019.

Weekly Progress Report
10-28-2019 through 11-01-2019

Following Construction Activities took place during above period:

Concrete Curb and Sidewalk:

- a. Contractor's concrete crew was not present at site therefore construction activities were not performed.

Drainage:

- a. 12" Ductile iron pipe was installed across Derousse Avenue from existing inlet to existing manhole.
- b. Existing three (3) Type B inlets along Horner Avenue East and West were Reconstructed using new casting, And Curb piece, Type N ECO was installed.
- c. Existing castings and curb pieces were stockpiled at laydown yard and will be delivered to Camden County public work yard in Lindenwold at later date.

Two Week Look Ahead:

- a. Construction of drainage related activities are started from 10/14/2019 and completed by 11/1/2019.
- b. Construction of concrete curb and sidewalk related activities will start from 11/11/2019.

Biweekly Progress Meeting:



Figure 1: Installation of 12" ductile iron pipe across Derrusse Avenue from existing inlet to existing manhole.

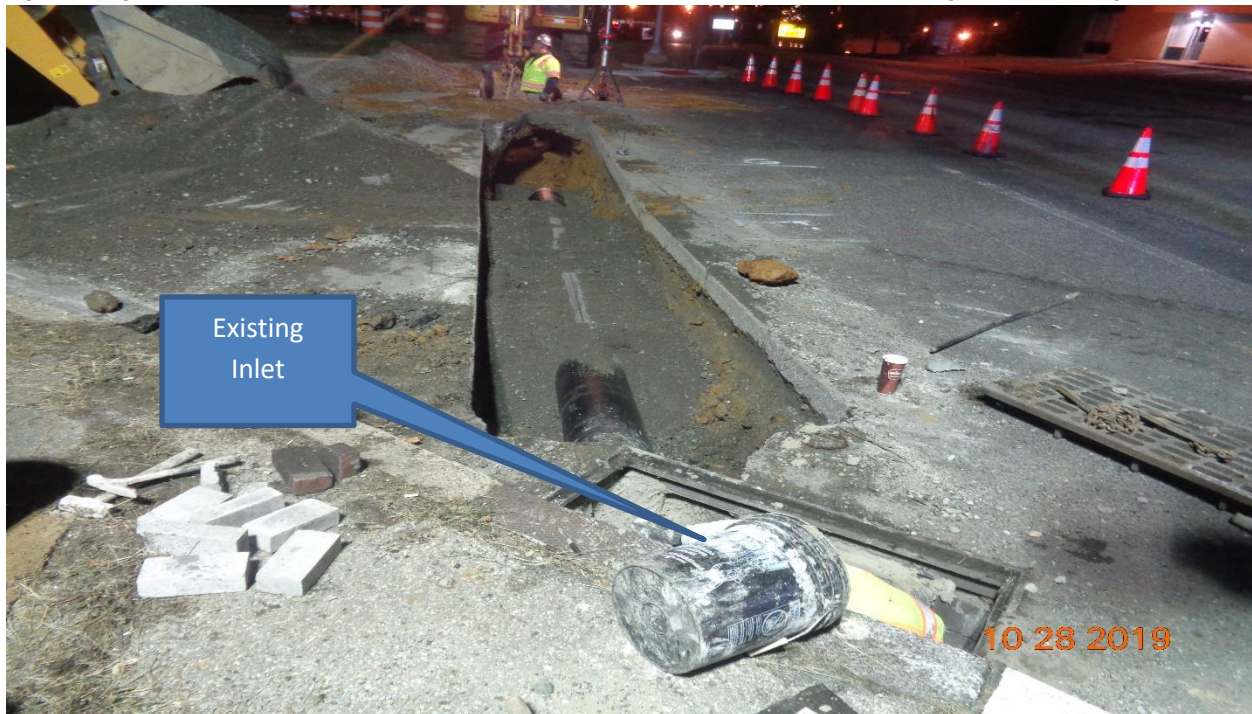


Figure 2: Installation of 12" ductile iron pipe across Derrusse Avenue from existing inlet to existing manhole.



Figure 3: Installation of 12" ductile iron pipe across Derausse Avenue from existing inlet to existing manhole – Trench Backfilling.



Figure 4: Installation of 12" ductile iron pipe across Derausse Avenue from existing inlet to existing manhole- Inlet reconstruction.



Figure 5: Installation of 12" ductile iron pipe across Derosse Avenue form existing inlet to existing manhole.



Figure 6: Installation of 12" ductile iron pipe across Derosse Avenue form existing inlet to existing manhole – Asphalt placed for Trench.



Figure 7: Existing three (3) Type B inlets along Horner Avenue East and West were Reconstructed using new casting, And Curb piece, Type N ECO was installed.



Figure 8: Existing three (3) Type B inlets along Horner Avenue East and West were Reconstructed using new casting, And Curb piece, Type N ECO was installed.

Department of Public Works
Complex

Susan Shin-Angulo
Freeholder Liaison

John Wolick
Director



Charles J. DePalma

2311 Egg Harbor Road
Lindenwold, NJ 08021
Phone 856.566.2980
Fax 856.566.2988

highway@camdencounty.com



Figure 9: Existing castings and curb pieces were stockpiled at laydown yard.

Prepared By:
Gunvant Mistry
Resident Engineer

Department of Public Works

Susan Shin-Angulo
Freeholder Liaison

John Wolick
Director



Charles J. DePalma Complex
2311 Egg Harbor Road
Lindenwold, NJ 08021
Phone 856.566.2980
Fax 856.566.2988
highway@camdencounty.com

**Mill and Overlay of Westfield Avenue (CR 610) from Tinsman Avenue (MP 1.57) TO NJ Route 130 (MP 2.92)
Pennsauken Township, Camden County, New Jersey**

Notice to Proceed issued: August 30, 2019
Project Completion: May 10, 2020
Project Substantial Completion: April 10, 2020.
Project start: September 4, 2019.

Weekly Progress Report
11-04-2019 through 11-08-2019

Following Construction Activities took place during above period:

Concrete Curb and Sidewalk:

- a. Contractor's concrete crew was not present at site; therefore, construction of concrete curb and sidewalk related activities were not performed.

Two Week Look Ahead:

- a. Construction of concrete curb and sidewalk related activities will start from 11/18/2019.

Biweekly Progress Meeting:

- a. Biweekly Progress Meeting No. 5 was held at Pennsauken Township building.

Prepared By:
Gunvant Mistry
Resident Engineer



**Mill and Overlay of Westfield Avenue (CR 610) from Tinsman Avenue (MP 1.57) TO NJ Route 130 (MP 2.92)
Pennsauken Township, Camden County, New Jersey**

Notice to Proceed issued: August 30, 2019
Project Completion: May 10, 2020
Project Substantial Completion: April 10, 2020.
Project start: September 4, 2019.

**Weekly Progress Report
11-08-2019 through 01-10-2020**

Following Construction Activities took place during above period:

Concrete Curb and Sidewalk:

- a. Contractor's concrete crew was not present at site; therefore, construction of concrete curb and sidewalk related activities were not performed from 11-01-2019 through 01-05-2020.
- b. Contractor's Concrete crew is present at site this week taking care of safety related issues for Winter Shutdown.
- c. East Handicap Ramp was reconstructed along Horner Avenue.
- d. Sidewalk was reconstructed over 18" RCP Trench between Horner Avenue and Hillcrest Avenue.
- e. Sidewalk was reconstructed over 16" DIP Trench between Hillcrest Avenue and Hollinshead Avenue.
- f. West Handicap ramp was constructed along Hillcrest Avenue.
- g. Existing Brick pavers were reset along East and West Handicap Ramp area along Scovel Avenue.

Two Week Look Ahead:

- a. Winter shutdown Notice was issued to SSI by Camden County Engineer on 12/15/2019 for shut down proposed project during winter Months. Camden County will inform contractor when to start the work.

Biweekly Progress Meeting:

- a. Biweekly Progress Meeting No. 6 was held at Pennsauken Township building.

Prepared By:
Gunvant Mistry
Resident Engineer



Figure 1: Horner Avenue – East Handicap Ramp was reconstructed.



Figure 2: Sidewalk reconstructed over 18" RCP Trench between Horner Avenue and Hillcrest Avenue



Figure 3: Sidewalk reconstructed over 18" RCP Trench between Horner Avenue and Hillcrest Avenue



Figure 4: Hillcrest Avenue Construction of west handicap ramp.

Susan Shin-Angulo
Freeholder Liaison

2311 Egg Harbor Road
Lindenwold, NJ 08021
Phone 856.566.2980
Fax 856.566.2988

John Wolick
Director

highway@camdencounty.com



Figure 5: Sidewalk reconstructed over 16" DIP Trench between Hillcrest Avenue and Hollinshead Avenue.



Figure 6: Sidewalk reconstructed over 16" DIP Trench between Hillcrest Avenue and Hollinshead Avenue.



Figure 7: Scovel Avenue West – Resetting existing brick pavers.



Figure 8: Scovel Avenue East – Resetting existing brick pavers.



**Mill and Overlay of Westfield Avenue (CR 610) from Tinsman Avenue (MP 1.57) TO NJ Route 130 (MP 2.92)
Pennsauken Township, Camden County, New Jersey**

Notice to Proceed issued: August 30, 2019
Project Completion: August 12, 2020
Project Substantial Completion: July 13, 2020.
Project start: September 4, 2019.

Weekly Progress Report
01-11-2020 – 03-13-2020

Following Construction Activities took place during above period:

Concrete Curb and Sidewalk:

- a. Winter shutdown Notice was issued to SSI by Camden County Engineer on 12/13/2019 for shut down proposed project during winter Months. Therefore, construction activities were not performed.

Amended Notice to Proceed:

- a. Amended notice to proceed was issued by Camden County Engineer on March 04, 2020 to SSI and authorized to start work on Monday, March 16, 2020. Based on the remaining project duration, the project completion date(s) are Saturday, July 13, 2020 for Substantial Completion and Sunday August 12, 2020 for Final Completion.

Construction Schedule:

- a. Revised construction schedule was submitted by SSI on March 10, 2020 at Kickoff meeting. The schedule reflects revised project completion and project substantial completion date(s) as above.

Traffic Safety:

- a. VMS along North and South were turned on Friday, March 13, 2020.

Two Week Look Ahead:

- a. Construction of concrete curb and Sidewalk will start from March 23, 2020.
- b. Construction of Full depth pavement alongside street of Westfield Avenue will start from March 17, 2020

Kickoff Meeting:

- a. Kickoff meeting after winter shutdown was held on Tuesday, March 10, 2020 at Pennsauken Township Building.

Prepared By:
Gunvant Mistry
Resident Engineer



Figure 1: VMS turned on along North and South of Westfield Avenue.



Figure 2: VMS turned on along North and South of Westfield Avenue.

Department of Public Works

Susan Shin-Angulo
Freeholder Liaison

John Wolick
Director



Charles J. DePalma Complex
2311 Egg Harbor Road
Lindenwold, NJ 08021
Phone 856.566.2980
Fax 856.566.2988
highway@camdencounty.com

**Mill and Overlay of Westfield Avenue (CR 610) from Tinsman Avenue (MP 1.57) TO NJ Route 130 (MP 2.92)
Pennsauken Township, Camden County, New Jersey**

Notice to Proceed issued: August 30, 2019
Project Completion: August 12, 2020
Project Substantial Completion: July 13, 2020.
Project start: September 4, 2019.

Weekly Progress Report
03-16-2020 – 03-20-2020

Following Construction Activities took place during above period:

Concrete Curb and Sidewalk:

- a. Construction of concrete curb and sidewalk will be started from March 19, 2020. Layout for proposed concrete curb, handicap ramps and sidewalk were performed along Westfield Avenue, RT between Horner Avenue and Lexington Avenue

Roadway:

- a. Proposed side street full depth asphalt roadway construction was performed along Scovel Avenue, LT

Two Week Look Ahead:

- a. Construction of concrete curb and Sidewalk started from March 19, 2020 and will be under progress for next two weeks.
- b. Construction of Full depth pavement alongside street of Westfield Avenue had started from March 17, 2020 and will be under progress for next two weeks.

Utility:

- a. Conference call was held with representative of PSE&G Gas, Camden County department of Public work – County Engineer, Senior Engineer, JMT and Contractor (SSI) for PSE&G Gas is scheduling Gas leak fix within project limits.

Prepared By:
Gunvant Mistry
Resident Engineer

Susan Shin-Angulo
Freeholder Liaison

2311 Egg Harbor Road
Lindenwold, NJ 08021
Phone 856.566.2980
Fax 856.566.2988

John Wolick
Director

highway@camdencounty.com



Figure 1: Full depth side street Asphalt Roadway construction along Scovel Avenue LT – Compaction of Subbase course is under progress.



Figure 2: Full depth side street Asphalt Roadway construction along Scovel Avenue LT – Asphalt Paving is under progress.



Figure 3: Full depth side street Asphalt Roadway construction along Scovel Avenue LT



Department of Public Works
Complex



Charles J. DePalma

Susan Shin-Angulo
Freeholder Liaison

2311 Egg Harbor Road
Lindenwold, NJ 08021
Phone 856.566.2980
Fax 856.566.2988

John Wolick
Director

highway@camdencounty.com

Figure 4: Layout for proposed concrete curb, handicap ramps and sidewalk were performed along Westfield Avenue, RT between Horner Avenue and Lexington Avenue



**Mill and Overlay of Westfield Avenue (CR 610) from Tinsman Avenue (MP 1.57) TO NJ Route 130 (MP 2.92)
Pennsauken Township, Camden County, New Jersey**

Notice to Proceed issued: August 30, 2019
Project Completion: August 12, 2020
Project Substantial Completion: July 13, 2020.
Project start: September 4, 2019.

Weekly Progress Report
03-23-2020 – 03-27-2020

Following Construction Activities took place during above period:

Concrete Curb and Sidewalk:

- a. East and West Concrete curb and sidewalks were constructed along Westfield Avenue, RT at following locations.
 - 1) East and West concrete curb and sidewalk along Lexington Avenue.
 - 2) East concrete curb and sidewalk along Merchantville Avenue.
 - 3) West concrete curb along Merchantville Avenue.

Two Week Look Ahead:

- a. Construction of concrete curb and sidewalk started from March 24, 2020 and will be under progress for next two weeks.

Biweekly Progress Meeting:

- a. Biweekly progress Meeting No. 7 was held in the field on Friday, March 27, 2020.

Utility:

PSE&G Gas:

- a. Meeting was held in the field with representative of PSE&G Gas, JMT, Township Engineer and Police Chief of Pennsauken Township, and Contractor (SSI) for communication coordination of PSE&G's Gas leak fix within project limits.
- b. Gas leak fix was performed along Sherman Avenue on Friday, March 27, 2020.

Prepared By:
Gunvant Mistry
Resident Engineer



Figure 1: East concrete curb and sidewalk at Merchantville Avenue along Westfield Avenue, RT



Figure 2: West concrete curb at Merchantville Avenue along Westfield Avenue, RT

Susan Shin-Angulo
Freeholder Liaison

2311 Egg Harbor Road
Lindenwold, NJ 08021
Phone 856.566.2980
Fax 856.566.2988

John Wolick
Director

highway@camdencounty.com



Figure 3: East concrete curb and sidewalk at Lexington Avenue along Westfield Avenue, RT



Figure 4: West concrete curb and sidewalk at Lexington Avenue along Westfield Avenue, RT

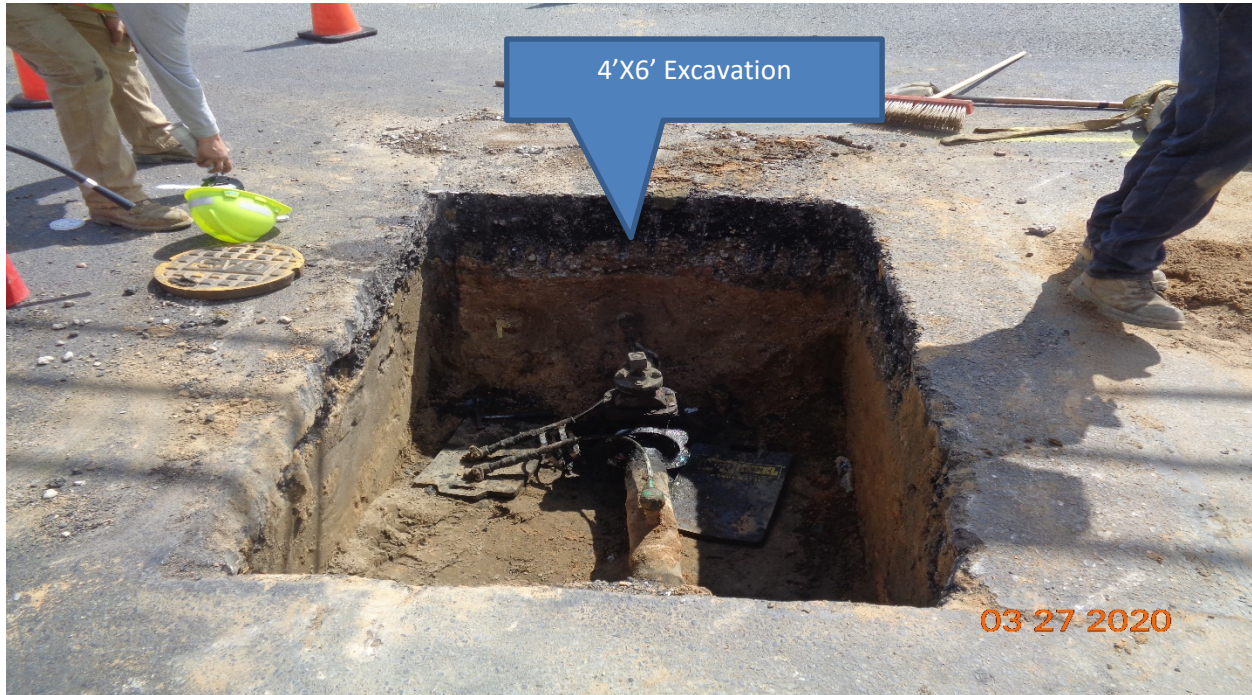


Figure 5: PSE&G Gas leak fix at Sherman Avenue along Westfield Avenue, LT



Figure 6: PSE&G Gas leak fix at Sherman Avenue along Westfield Avenue,



**Mill and Overlay of Westfield Avenue (CR 610) from Tinsman Avenue (MP 1.57) TO NJ Route 130 (MP 2.92)
Pennsauken Township, Camden County, New Jersey**

Notice to Proceed issued: August 30, 2019
Project Completion: August 12, 2020
Project Substantial Completion: July 13, 2020.
Project start: September 4, 2019.

Weekly Progress Report
03-30-2020 – 04-03-2020

Following Construction Activities took place during above period:

Concrete Curb and Sidewalk:

- a. East and West Concrete curb and sidewalks were constructed along Westfield Avenue, RT at following locations.
 - 1) West concrete curb, sidewalk and handicap ramps along Merchantville Avenue.
 - 2) East and West concrete curb, sidewalk and handicap ramps along Gross Avenue.
 - 3) East and West concrete curb, sidewalk and handicap ramps along Hollinshead Avenue.
 - 4) East and West concrete curb, sidewalk and handicap ramps along Hillcrest Avenue.
 - 5) East and West concrete curb, sidewalk and handicap ramps along Horner Avenue.

Topsoil and Seeding:

- a. Topsoil and seeding were performed along all constructed sidewalks along Westfield Avenue, RT Between Lexington Avenue to Hillcrest Avenue.

Two Week Look Ahead:

- a. Construction of concrete curb and sidewalk started from March 24, 2020 and will be under progress for next two weeks.

Utility:

PSE&G Gas:

- a. Gas leak fix was completed along Westfield Avenue at Derousse Avenue on Tuesday, March 31, 2020.
- b. Gas leak fix was completed along Sherman Avenue on Thursday, April 1, 2020
- c. Gas leak detection was started along Westfield Avenue at Scovel Avenue Thursday, April 1, 2020. Leak fixing was started on Friday, April 3, 2020 and will be completed on Monday, April 6, 2020.
- d. Gas leak detection was completed along Westfield Avenue at Hillcrest Avenue on Friday, April 3, 2020. Leak fixing will be completed on Monday, April 6, 2020

Prepared By:
Gunvant Mistry
Resident Engineer

Susan Shin-Angulo
Freeholder Liaison

2311 Egg Harbor Road
Lindenwold, NJ 08021
Phone 856.566.2980
Fax 856.566.2988

John Wolick
Director

highway@camdencounty.com



Figure 1: West Concrete curb, sidewalk and HC Ramp at Merchantville Avenue along Westfield Avenue, RT



Figure 2: East Concrete curb, sidewalk and HC Ramp at Gross Avenue along Westfield Avenue, RT.

Susan Shin-Angulo
Freeholder Liaison

2311 Egg Harbor Road
Lindenwold, NJ 08021
Phone 856.566.2980
Fax 856.566.2988

John Wolick
Director

highway@camdencounty.com



Figure 3: West Concrete curb, sidewalk and HC Ramp at Gross Avenue along Westfield Avenue, RT.



Figure 4: East Concrete curb, sidewalk and HC Ramp at Hollinshead Avenue along Westfield Avenue, RT.



Figure 5: West Concrete curb, sidewalk and HC Ramp at Hollinshead Avenue along Westfield Avenue, RT.



Figure 6: West Concrete curb, sidewalk and HC Ramp at Hillcrest Avenue along Westfield Avenue, RT.

Susan Shin-Angulo
Freeholder Liaison

2311 Egg Harbor Road
Lindenwold, NJ 08021
Phone 856.566.2980
Fax 856.566.2988

John Wolick
Director

highway@camdencounty.com



Figure 7: East Concrete curb, sidewalk and HC Ramp at Hillcrest Avenue along Westfield Avenue, RT.



Figure 8: West Concrete curb, sidewalk and HC Ramp at Horner Avenue along Westfield Avenue, RT.

Susan Shin-Angulo
Freeholder Liaison

2311 Egg Harbor Road
Lindenwold, NJ 08021
Phone 856.566.2980
Fax 856.566.2988

John Wolick
Director

highway@camdencounty.com



Figure 9: West Concrete curb, sidewalk and HC Ramp at Horner Avenue along Westfield Avenue, RT.



Figure 10: Topsoil and seeding were performed along all constructed sidewalks along Westfield Avenue, RT Between Lexington Avenue to Hillcrest Avenue.

Susan Shin-Angulo
Freeholder Liaison

2311 Egg Harbor Road
Lindenwold, NJ 08021
Phone 856.566.2980
Fax 856.566.2988

John Wolick
Director

highway@camdencounty.com



Figure 11: Gas leak fix was completed along Westfield Avenue at Derausse Avenue



Figure 12: Gas leak was fixed along Sherman Avenue.



Figure13: Gas leak fixing is under progress along Westfield Avenue at Scovel Avenue



Figure 14: Gas leak detection is under progress along Westfield Avenue at Hillcrest Avenue



**Mill and Overlay of Westfield Avenue (CR 610) from Tinsman Avenue (MP 1.57) TO NJ Route 130 (MP 2.92)
Pennsauken Township, Camden County, New Jersey**

Notice to Proceed issued: August 30, 2019
Project Completion: August 12, 2020
Project Substantial Completion: July 13, 2020.
Project start: September 4, 2019.

Weekly Progress Report
04-06-2020 – 04-10-2020

Following Construction Activities took place during above period:

Concrete Curb and Sidewalk:

- a. Concrete crew was not present at site therefore scheduled activities of concrete curb, sidewalk and HC Ramps were not performed.

Two Week Look Ahead:

- a. Construction of concrete curb and sidewalk started from March 24, 2020 and will be under progress for next two weeks.

Utility:

PSE&G Gas:

- a. Gas leak detection was started along Westfield Avenue at Scovel Avenue Thursday, April 1, 2020. Leak fixing was started on Friday, April 3, 2020 and was completed on Monday, April 6, 2020.
- b. Gas leak detection was completed along Westfield Avenue at Hillcrest Avenue on Friday, April 3, 2020. Leak fixing was completed on Monday, April 6, 2020
- c. Gas leak was fixed along Westfield Avenue at Derousse Avenue on Tuesday, March 31, 2020. On Thursday, April 9, 2020 excavated the same area and backfilled as directed by Camden County.
- d. Meeting was held with representatives of PSE&G Gas and their subcontractor Henkels & McCoy on Thursday, April 9, 2020 for fixing all temporarily concrete paving patches to permanent fix with concrete. Permanent fixing of concrete pavement will start from Monday, April 14, 2020.

MPWC- Water:

- a. Water valve was installed at Marlon Avenue, RT, and Hollinshead Avenue, LT. Existing water valve manholes were backfilled with DGA. Temporary Asphalt was placed at each location.

Biweekly Progress Meeting:

- a. Biweekly progress Meeting No. 8 was held in the field on Friday, April 10, 2020.

Prepared By:
Gunvant Mistry
Resident Engineer

Susan Shin-Angulo
Freeholder Liaison

2311 Egg Harbor Road
Lindenwold, NJ 08021
Phone 856.566.2980
Fax 856.566.2988

John Wolick
Director

highway@camdencounty.com



Figure 1: Asphalt placement for PSE&G Gas fixed locations along Westfield Avenue at Scovel Avenue.



Figure 2: PSE&G Gas – leak fixed along Westfield Avenue at Hillcrest Avenue.



Figure 3: PSE&G Gas- Asphalt placement for excavated area along Westfield Avenue at Hillcrest Avenue



Figure 4: PSE&G Gas – Along Westfield Avenue at Derausse Avenue – Garde Check.



Figure 5: PSE&G Gas – Along Westfield Avenue at Derausse Avenue – DGA Placement in lifts



Figure6: PSE&G Gas – Along Westfield Avenue at Derausse Avenue – Asphalt Placement in lift.

Susan Shin-Angulo
Freeholder Liaison

2311 Egg Harbor Road
Lindenwold, NJ 08021
Phone 856.566.2980
Fax 856.566.2988

John Wolick
Director

highway@camdencounty.com



Figure7: MPWC – Water valve installed along Marlon Avenue, RT



Figure8: MPWC – Water valve installed along Hollinshead Avenue, LT



**Mill and Overlay of Westfield Avenue (CR 610) from Tinsman Avenue (MP 1.57) TO NJ Route 130 (MP 2.92)
Pennsauken Township, Camden County, New Jersey**

Notice to Proceed issued: August 30, 2019
Project Completion: August 12, 2020
Project Substantial Completion: July 13, 2020.
Project start: September 4, 2019.

Weekly Progress Report
04-13-2020 – 04-18-2020

Following Construction Activities took place during above period:

Concrete Curb and Sidewalk:

- a. East and West Concrete curb and sidewalks were constructed along Westfield Avenue, RT at following locations.
 - 1) East and West concrete curb, sidewalk and handicap ramps along Norwood Avenue.
 - 2) East and West concrete curb, sidewalk and handicap ramps along Clement Avenue.

Two Week Look Ahead:

- a. Construction of concrete curb and sidewalk started from March 24, 2020 and will be under progress for next two weeks. – South State Inc.
- b. PSE&G Gas will be completing all permanent patches within project limit. – Heckle & McCoy.

Utility:

PSE&G Gas:

- a) PSE&G Gas reset gas valve along Westfield Avenue at Marlon Avenue. Excavation was replaced as approved by Camden County.
- b) PSE&G Gas – Sub contractor started construction of permanent concrete patches along Westfield Avenue within project limit. All temporary patches were excavated to 12 inches below top of the existing surface elevation. Subgrade was compacted with jumping jack with minimum of 4 passes to firm subgrade. 5/8" diameter dowels were epoxy grouted. Approved concrete NJDOT Class V concrete was placed to 3 inch below existing surface elevation or meet with existing concrete pavement and covered with steel plates at following locations.
 - 1) 5 locations at Scovel avenue out of 9.
 - 2) 5 locations at Marlon Avenue.
 - 3) 1 location at Derousse Avenue.
 - 4) 2 locations between Scovel Avenue and Cove road.

Prepared By:
Gunvant Mistry
Resident Engineer

Susan Shin-Angulo
Freeholder Liaison

2311 Egg Harbor Road
Lindenwold, NJ 08021
Phone 856.566.2980
Fax 856.566.2988

John Wolick
Director

highway@camdencounty.com



Figure 1: West concrete curb, sidewalk and HC Ramp at Norwood Avenue, RT



Figure 2: East concrete curb, sidewalk and HC Ramp at Norwood Avenue, RT

Susan Shin-Angulo
Freeholder Liaison

2311 Egg Harbor Road
Lindenwold, NJ 08021
Phone 856.566.2980
Fax 856.566.2988

John Wolick
Director

highway@camdencounty.com



Figure 3: West concrete curb, sidewalk and HC Ramp at Clements Avenue, RT



Figure 4: East concrete curb, sidewalk and HC Ramp at Clements Avenue, RT



Figure 5: PSE&G Gas – Saw cutting existing concrete pavement for permanent concrete patching.



Figure 6: PSE&G Gas – Compaction of subgrade with jumping jack. – Typical at Each location



Figure: 7 - PSE&G Gas – 5/8" diameter dowels epoxy grouted – Typical at each location.



Figure: 8 - PSE&G Gas – NJDOT Class V Concrete placed – Typical at all locations.

Susan Shin-Angulo
Freeholder Liaison

2311 Egg Harbor Road
Lindenwold, NJ 08021
Phone 856.566.2980
Fax 856.566.2988

John Wolick
Director

highway@camdencounty.com



Figure 9 - PSE&G Gas – Concrete patch was covered with steel plate. – Typical at all locations.



Figure 10: PSE&G Gas – Warning sign for steel plates on the road at each location in both directions for safety.



**Mill and Overlay of Westfield Avenue (CR 610) from Tinsman Avenue (MP 1.57) TO NJ Route 130 (MP 2.92)
Pennsauken Township, Camden County, New Jersey**

Notice to Proceed issued: August 30, 2019
Project Completion: August 12, 2020
Project Substantial Completion: July 13, 2020.
Project start: September 4, 2019.

Weekly Progress Report
04-20-2020 – 04-25-2020

Following Construction Activities took place during above period:

Concrete Curb and Sidewalk:

- a. East and West Concrete curb and sidewalks were constructed along Westfield Avenue, RT at following locations.
 - 1) East and West concrete curb, sidewalk and handicap ramps along Bethel Avenue.
 - 2) East and West concrete curb, sidewalk and handicap ramps along Sherman Avenue.
 - 3) East and West concrete curb, sidewalk and handicap ramps along Scovel Avenue.
 - 4) East and West concrete curb, sidewalk and handicap ramps along Penn Street.
 - 5) East and West concrete curb, sidewalk and handicap ramps along Marlon Avenue.
 - 6) East concrete curb, sidewalk and handicap ramp along Cove Road.

Topsoil placement:

- a. Topsoil was placed along concrete sidewalk and HC Rampa at following locations along Westfield Avenue, RT
 - 1) East and West concrete sidewalk at Norwood Avenue.
 - 2) East and West concrete sidewalk at Clements Avenue.
 - 3) West concrete sidewalk at Bethel Avenue.
 - 4) East concrete sidewalk at Sherman Avenue.

Topsoil and Seeding:

- a. Topsoil and seeding were performed along concrete sidewalk and HC Ramps at following locations along Westfield Avenue, RT.
 - 1) East and West sidewalk and HC Ramps at Horner Avenue.
 - 2) East and West sidewalk and HC Ramps at Scovel Avenue.
 - 3) West sidewalk and HC Ramp at Penn Street.

Two Week Look Ahead:

- a. Construction of concrete curb and sidewalk started from March 24, 2020 and will be under progress for next two weeks. – South State Inc.

Susan Shin-Angulo
Freeholder Liaison

2311 Egg Harbor Road
Lindenwold, NJ 08021
Phone 856.566.2980
Fax 856.566.2988

John Wolick
Director

highway@camdencounty.com

- b. PSE&G Gas – Completed all concrete patches along Westfield Avenue main line. There are patches to be completed along side streets at Marlon Avenue and Merchantville Avenue.

Biweekly Progress Meeting:

- a. Biweekly Progress Meeting No. 9 was held in the field on Friday, April 24, 2020. Vibhuti Bhimani – Senior Engineer Camden County Joint the meeting via phone.

Utility:

PSE&G Gas:

- a) PSE&G Gas – Sub contractor started construction of permanent concrete patches along Westfield Avenue within project limit. All temporary patches were excavated to 12 inches below top of the existing surface elevation. Subgrade was compacted with jumping jack with minimum of 4 passes to firm subgrade. 5/8" diameter dowels were epoxy grouted. Approved concrete NJDOT Class V concrete was placed to 3 inch below existing surface elevation or meet with existing concrete pavement and covered with steel plates.at Following locations.
 - 1) 4 locations at Scovel avenue out of 9.
 - 2) 2 locations at Hillcrest Avenue.
 - 3) 2 location at Merchantville Avenue.
 - 4) 4 locations between Merchantville Avenue and Springfield Avenue.
 - 5) Asphalt was placed for all locations between Drousse avenue and Lexington Avenue within Project limit.

Prepared by:
Guvant Mistry
Resident Engineer

Susan Shin-Angulo
Freeholder Liaison

2311 Egg Harbor Road
Lindenwold, NJ 08021
Phone 856.566.2980
Fax 856.566.2988

John Wolick
Director

highway@camdencounty.com



Figure 1: West concrete curb, sidewalk and handicap ramp at Bethel Avenue, RT



Figure 2: East concrete curb, sidewalk and handicap ramp at Bethel Avenue, RT



Figure 3: East concrete curb, sidewalk and handicap ramp at Sherman Avenue, RT



Figure 4: West concrete curb, sidewalk and handicap ramp at Sherman Avenue, RT

Susan Shin-Angulo
Freeholder Liaison

2311 Egg Harbor Road
Lindenwold, NJ 08021
Phone 856.566.2980
Fax 856.566.2988

John Wolick
Director

highway@camdencounty.com



Figure 5: East concrete curb, sidewalk and handicap ramp at Scovel Avenue, RT



Figure 6: West concrete curb, sidewalk and handicap ramp at Scovel Avenue, RT

Susan Shin-Angulo
Freeholder Liaison

2311 Egg Harbor Road
Lindenwold, NJ 08021
Phone 856.566.2980
Fax 856.566.2988

John Wolick
Director

highway@camdencounty.com



Figure 7: East concrete curb, sidewalk and handicap ramp at Penn Street, RT



Figure 8: West concrete curb, sidewalk and handicap ramp at Penn Street, RT



Figure 9: East concrete curb, sidewalk and handicap ramp at Marlon Avenue, RT



Figure 10: West concrete curb, sidewalk and handicap ramp at Marlon Avenue, RT



Figure 11: East concrete curb, sidewalk and handicap ramp at Cove Road, RT



Figure 12: Topsoil placement at West concrete sidewalk and HC Ramp at Bethel Avenue – Typical for all locations



Figure 13: West sidewalk and HC Ramp at Scovel Avenue, RT – Typical Topsoil and seeding at all locations.



Figure 14: PSE&G Gas – Permanent Concrete pavement Patch – Subgrade Preparation – Typical at all locations.



Figure 15: PSE&G Gas – NJDOT Class V Concrete placement with dowels, Typical at each location.



Figure 16: Asphalt was placed for previously placed concrete patch area, Typical at all locations.

Susan Shin-Angulo
Freeholder Liaison

2311 Egg Harbor Road
Lindenwold, NJ 08021
Phone 856.566.2980
Fax 856.566.2988

John Wolick
Director

highway@camdencounty.com



Figure 17: PSE&G Gas – Asphalt was placed for all permanent patch locations.



Figure 18: PSE&G Gas – Asphalt was placed for all permanent patch locations.



**Mill and Overlay of Westfield Avenue (CR 610) from Tinsman Avenue (MP 1.57) TO NJ Route 130 (MP 2.92)
Pennsauken Township, Camden County, New Jersey**

Notice to Proceed issued: August 30, 2019
Project Completion: August 12, 2020
Project Substantial Completion: July 13, 2020.
Project start: September 4, 2019.

Weekly Progress Report
04-27-2020 – 05-01-2020

Following Construction Activities took place during above period:

Concrete Curb and Sidewalk:

- a. East and West Concrete curb and sidewalks, and driveway were constructed along Westfield Avenue, RT at following locations.
 - 1) West concrete sidewalk along Marlon Avenue.
 - 2) West concrete curb, sidewalk, and handicap ramp along Cove Road.
 - 3) Concrete driveway along Westfield Avenue STA 93+00 – 93+50, 23' RT.
 - 4) Header curbs between proposed sidewalk and existing brick pavers at Lexington Avenue - West Merchantville Avenue – West, Gross Avenue – West, Horner Avenue – West, Scovel Avenue –

Topsoil and Seeding:

- a. Topsoil and seeding were performed along concrete sidewalk and HC Ramps at following locations along Westfield Avenue, RT.
 - 1) East and West sidewalk and HC Ramps at Marlon Avenue.

Brick pavers:

- a. Existing brick pavers were reset along proposed East and West sidewalk and existing brick pavers and between header curb and existing brick pavers along Westfield Avenue, RT.
 - 1) At Lexington Avenue, Merchantville Avenue, Gross Avenue, Hollinshead Avenue, Horner Avenue, and Penn street.

Two Week Look Ahead:

- a. Construction of concrete curb and sidewalk started from March 24, 2020 and will be under progress for next two weeks. – South State Inc.
- b. Construction of Concrete gutters.

Prepared by:
Guvant Mistry
Resident Engineer

Susan Shin-Angulo
Freeholder Liaison

2311 Egg Harbor Road
Lindenwold, NJ 08021
Phone 856.566.2980
Fax 856.566.2988

John Wolick
Director

highway@camdencounty.com



Figure 1: Concrete driveway 6" thick along Westfield Avenue STA 93+00-93+50, RT, and West sidewalk at Marlon Avenue, RT



Figure 2: West concrete curb, sidewalk and HC Ramp at Cove Road, RT



Figure 3: Hader Curb along Lexington Avenue West, RT



Figure 4: Hader Curb along Gross Avenue West, RT

Susan Shin-Angulo
Freeholder Liaison

2311 Egg Harbor Road
Lindenwold, NJ 08021
Phone 856.566.2980
Fax 856.566.2988

John Wolick
Director

highway@camdencounty.com



Figure 5: Hader Curb along Scovel Avenue East, RT



Figure 6: Hader Curb along Penn Street, East, RT



Figure 7: Hader Curb along Horner Avenue East, RT



Figure 8: Topsoil and seeding along East sidewalk at Marlon Avenue, RT

Susan Shin-Angulo
Freeholder Liaison

2311 Egg Harbor Road
Lindenwold, NJ 08021
Phone 856.566.2980
Fax 856.566.2988

John Wolick
Director

highway@camdencounty.com



Figure 9: Topsoil and seeding along West sidewalk at Marlon Avenue, RT, And DGA along edges of driveway



Figure 10: Resetting existing brick pavers along proposed sidewalk and existing brick pavers

Susan Shin-Angulo
Freeholder Liaison

2311 Egg Harbor Road
Lindenwold, NJ 08021
Phone 856.566.2980
Fax 856.566.2988

John Wolick
Director

highway@camdencounty.com



Figure 11: Resetting existing brick pavers along proposed sidewalk and existing brick pavers



Figure 12: Resetting existing brick pavers along proposed sidewalk and existing brick pavers

Department of Public Works

Susan Shin-Angulo
Freeholder Liaison

John Wolick
Director



Charles J. DePalma Complex
2311 Egg Harbor Road
Lindenwold, NJ 08021
Phone 856.566.2980
Fax 856.566.2988
highway@camdencounty.com

**Mill and Overlay of Westfield Avenue (CR 610) from Tinsman Avenue (MP 1.57) TO NJ Route 130 (MP 2.92)
Pennsauken Township, Camden County, New Jersey**

Notice to Proceed issued: August 30, 2019
Project Completion: August 12, 2020
Project Substantial Completion: July 13, 2020.
Project start: September 4, 2019.

Weekly Progress Report
05-04-2020 – 05-08-2020

Following Construction Activities took place during above period:

Concrete Curb and Sidewalk:

- a. Concrete crew was not present at site therefore schedule activities for construction of concrete curb, sidewalks, HC Ramps, and concrete driveway were not performed.

Two Week Look Ahead:

- a. Construction of concrete curb and sidewalk started from March 24, 2020 and will be under progress for next two weeks. – South State Inc.
- b. Construction of Concrete gutters.

Biweekly Progress Meeting:

- a. Biweekly progress Meeting No.10 was held in the field.

Prepared by:
Guvant Mistry
Resident Engineer

Department of Public Works
Complex

Susan Shin-Angulo
Freeholder Liaison

John Wolick
Director



Charles J. DePalma

2311 Egg Harbor Road
Lindenwold, NJ 08021
Phone 856.566.2980
Fax 856.566.2988

highway@camdencounty.com

Department of Public Works

Susan Shin-Angulo
Freeholder Liaison

John Wolick
Director



Charles J. DePalma Complex
2311 Egg Harbor Road
Lindenwold, NJ 08021
Phone 856.566.2980
Fax 856.566.2988
highway@camdencounty.com

**Mill and Overlay of Westfield Avenue (CR 610) from Tinsman Avenue (MP 1.57) TO NJ Route 130 (MP 2.92)
Pennsauken Township, Camden County, New Jersey**

Notice to Proceed issued: August 30, 2019
Project Completion: August 12, 2020
Project Substantial Completion: July 13, 2020.
Project start: September 4, 2019.

Weekly Progress Report
05-11-2020 – 05-15-2020

Following Construction Activities took place during above period:
Concrete Curb and Sidewalk and Gutters.

- a. East and West Concrete gutters were constructed along Westfield Avenue, RT at following locations
 - 1) At Norwood Avenue
 - 2) At Bethel Avenue

Two Week Look Ahead:

- a. Construction of concrete curb and sidewalk started from March 24, 2020 and will be under progress for next two weeks. – South State Inc.
- b. Construction of Concrete gutters.

Prepared by:
Guvant Mistry
Resident Engineer



Figure 1: Concrete gutter along Westfield Avenue, RT at Norwood Avenue.



Figure 2: Concrete gutter along Westfield Avenue, RT at Bethel Avenue.

Department of Public Works

Susan Shin-Angulo
Freeholder Liaison

John Wolick
Director



Charles J. DePalma Complex
2311 Egg Harbor Road
Lindenwold, NJ 08021
Phone 856.566.2980
Fax 856.566.2988
highway@camdencounty.com

**Mill and Overlay of Westfield Avenue (CR 610) from Tinsman Avenue (MP 1.57) TO NJ Route 130 (MP 2.92)
Pennsauken Township, Camden County, New Jersey**

Notice to Proceed issued: August 30, 2019
Project Completion: August 12, 2020
Project Substantial Completion: July 13, 2020.
Project start: September 4, 2019.

Weekly Progress Report
05-18-2020 – 05-22-2020

Following Construction Activities took place during above period:
Concrete Curb and Sidewalk and Gutters.

- a. Concrete gutters were constructed along Westfield Avenue, RT at following locations
 - 1) At Clement Avenue
 - 2) At Sherman Avenue

Two Week Look Ahead:

- a. Construction of concrete curb and sidewalk started from March 24, 2020 and will be under progress for next two weeks. – South State Inc.
- b. Milling and Paving will start from June 2, 2020.

Biweekly Progress Meeting:

- a) Biweekly Progress Meeting No. 11 was held in field on Friday, May 22, 2020

Prepared by:
Guvant Mistry
Resident Engineer



Figure 1: Concrete gutter along Westfield Avenue, RT at Sherman Avenue



Figure 1: Concrete gutter along Westfield Avenue, RT at Clement Avenue



**Mill and Overlay of Westfield Avenue (CR 610) from Tinsman Avenue (MP 1.57) TO NJ Route 130 (MP 2.92)
Pennsauken Township, Camden County, New Jersey**

Notice to Proceed issued: August 30, 2019
Project Completion: August 12, 2020
Project Substantial Completion: July 13, 2020.
Project start: September 4, 2019.

Weekly Progress Report
05-26-2020 – 05-29-2020

Following Construction Activities took place during above period:
Concrete Curb and Sidewalk and Gutters.

- a. Concrete crew was not present at site therefore schedule activities for construction of concrete curb, sidewalks, HC Ramps, and concrete driveway were not performed.
- b. DGA was placed along all exposed edges of previously constructed concrete gutters along Westfield Avenue, RT, and compacted with walk behind plate compactor at Following locations.
 1. Sherman Avenue
 2. Bethel Avenue
 3. Clement Avenue

Two Week Look Ahead:

- a. Construction of concrete curb and sidewalk started from March 24, 2020 and will be under progress for next two weeks. – South State Inc.
- b. Milling and Paving will start from June 2, 2020.

UTILITY:

PSE&G GAS:

- a. Gas leak testing holes were filled with grout along Westfield Avenue at Hillcrest Avenue.

Pennsauken Township Sewage Authority:

- a. Meeting was held with representative of Pennsauken Township Sewage Authority, and Pennsauken Township Engineer for Resetting and Replacing of sewage manholes.

Prepared by:
Gunvant Mistry
Resident Engineer



Figure 1: Gas Leak testing holes were filled with grout along Westfield Avenue at Hillcrest Avenue.



Figure 2: Exposed edges of concrete gutters were filled with DGA Along Westfield Avenue, RT, at Sherman Avenue, Bethel Avenue, and Clement Avenue, Typical

Department of Public Works

Susan Shin-Angulo
Freeholder Liaison

John Wolick
Director



Charles J. DePalma Complex
2311 Egg Harbor Road
Lindenwold, NJ 08021
Phone 856.566.2980
Fax 856.566.2988
highway@camdencounty.com

**Mill and Overlay of Westfield Avenue (CR 610) from Tinsman Avenue (MP 1.57) TO NJ Route 130 (MP 2.92)
Pennsauken Township, Camden County, New Jersey**

Notice to Proceed issued: August 30, 2019
Project Completion: August 12, 2020
Project Substantial Completion: July 13, 2020.
Project start: September 4, 2019.

Weekly Progress Report
06-01-2020 – 06-05-2020

Following Construction Activities took place during above period:
Concrete Curb and Sidewalk and Gutters.

- a. Concrete crew was not present at site therefore schedule activities for construction of concrete curb, sidewalks, HC Ramps, and concrete driveway were not performed.

Two Week Look Ahead:

- a. Construction of concrete curb and sidewalk started from March 24, 2020 and will be under progress for next two weeks. – South State Inc.
- b. Milling and Paving will start from June 9, 2020.

Biweekly Progress Meeting:

- a. Biweekly Progress Meeting No. 12 and Pre - Paving meeting was held in the field.

Utility:

PSE&G Gas:

- a. Gas leak testing holes were filled with Grout along Westfield Avenue at Merchantville Avenue.

Prepared by:
Guvant Mistry
Resident Engineer



Figure 1: Gas Leak testing holes were filled with grout along Westfield Avenue at Merchantville Avenue.



Figure 2: Gas Leak testing holes were filled with grout along Westfield Avenue at Merchantville Avenue.

Department of Public Works

Susan Shin-Angulo
Freeholder Liaison

John Wolick
Director



Charles J. DePalma Complex
2311 Egg Harbor Road
Lindenwold, NJ 08021
Phone 856.566.2980
Fax 856.566.2988
highway@camdencounty.com

**Mill and Overlay of Westfield Avenue (CR 610) from Tinsman Avenue (MP 1.57) TO NJ Route 130 (MP 2.92)
Pennsauken Township, Camden County, New Jersey**

Notice to Proceed issued: August 30, 2019
Project Completion: August 12, 2020
Project Substantial Completion: July 13, 2020.
Project start: September 4, 2019.

Weekly Progress Report
06-22-2020 – 06-26-2020

Following Construction Activities took place during above period:

Concrete Curb and Sidewalk and Gutters:

- a. Concrete crew was not present at site therefore construction of concrete curb, sidewalk, HC Ramps was not performed.

HMA Milling and Asphalt Paving:

- a. Stone Matrix Asphalt 12.5 MM Surface Course was placed along Westfield Avenue between STA 133+64 – 109+50.

Two Week Look Ahead:

- a. Construction of concrete curb and sidewalk started from March 24, 2020 and will be under progress for next two weeks. – South State Inc.
- b. Milling and Paving started from June 9, 2020 and will continue for next two weeks.

Prepared by:
Guvant Mistry
Resident Engineer



Figure1: Stone Matrix Asphalt 12.5 MM Surface Course along Westfield Avenue between STA 133+64 – 109+50.



Figure2: Stone Matrix Asphalt 12.5 MM Surface Course along Westfield Avenue between STA 133+64 – 109+50.



Figure 3: Stone Matrix Asphalt 12.5 MM Surface Course along Westfield Avenue between STA 133+64 – 109+50.



Figure 4: Stone Matrix Asphalt 12.5 MM Surface Course along Westfield Avenue between STA 133+64 – 109+50.

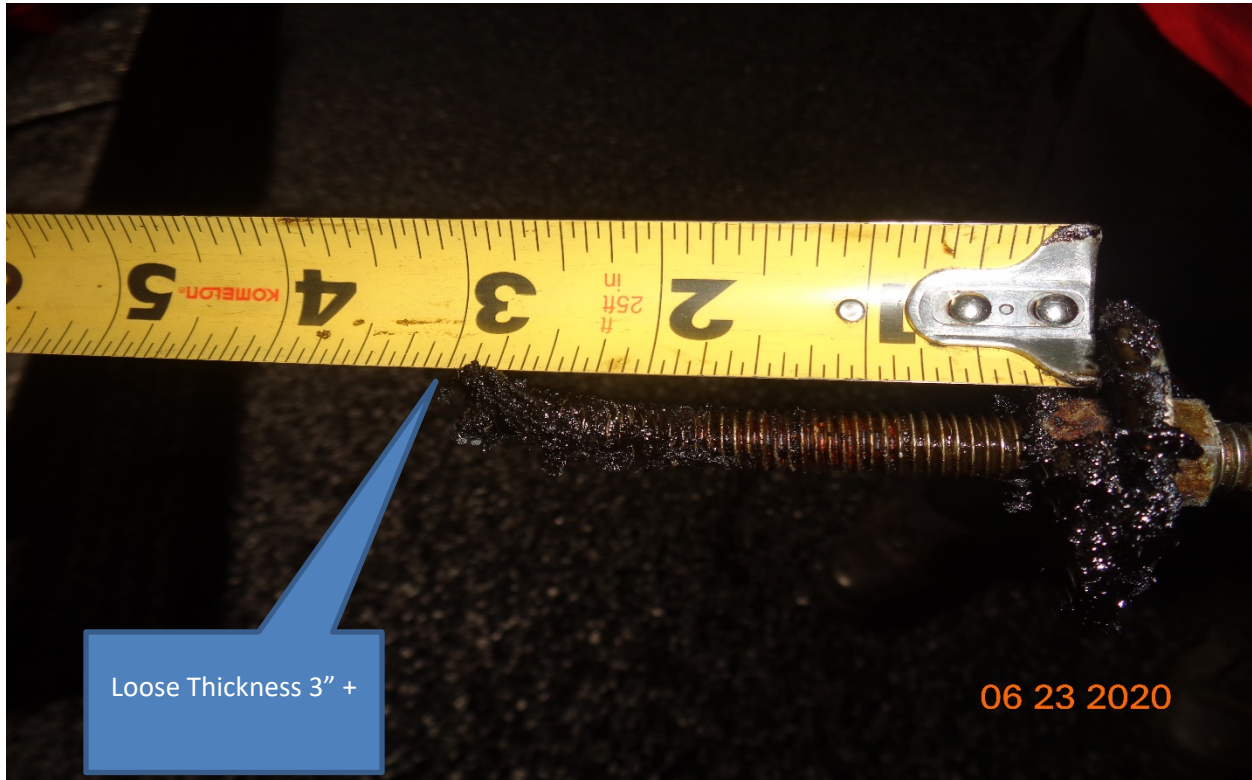


Figure 5: Stone Matrix Asphalt 12.5 MM Surface Course along Westfield Avenue between STA 133+64 – 109+50.



Figure 6: Stone Matrix Asphalt 12.5 MM Surface Course along Westfield Avenue between STA 133+64 – 109+50.

Susan Shin-Angulo
Freeholder Liaison

2311 Egg Harbor Road
Lindenwold, NJ 08021
Phone 856.566.2980
Fax 856.566.2988

John Wolick
Director

highway@camdencounty.com



Figure 7: Stone Matrix Asphalt 12.5 MM Surface Course along Westfield Avenue between STA 133+64 – 109+50.



Figure 8: Stone Matrix Asphalt 12.5 MM Surface Course along Westfield Avenue between STA 133+64 – 109+50.



Figure 6: Stone Matrix Asphalt 12.5 MM Surface Course along Westfield Avenue between STA 133+64 – 109+50.

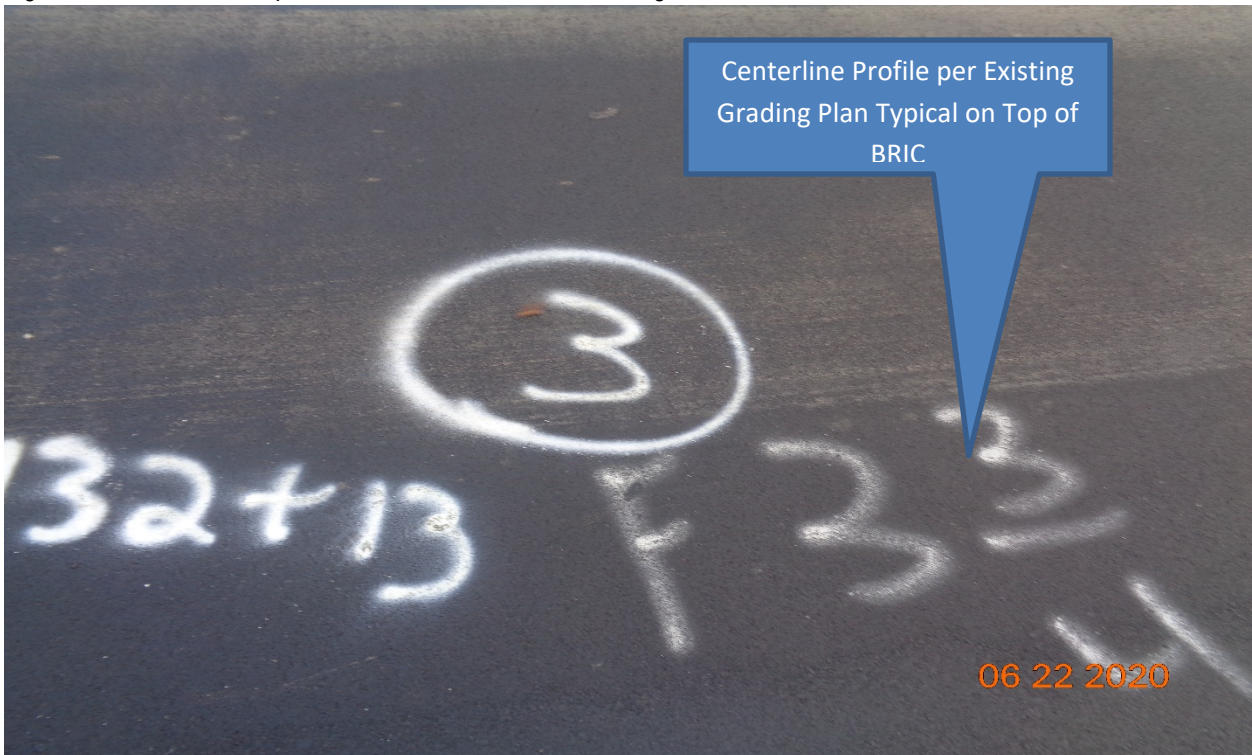


Figure 6: Stone Matrix Asphalt 12.5 MM Surface Course along Westfield Avenue between STA 133+64 – 109+50



**Mill and Overlay of Westfield Avenue (CR 610) from Tinsman Avenue (MP 1.57) TO NJ Route 130 (MP 2.92)
Pennsauken Township, Camden County, New Jersey**

Notice to Proceed issued: August 30, 2019
Project Completion: August 12, 2020
Project Substantial Completion: July 13, 2020.
Project start: September 4, 2019.

Weekly Progress Report
06-29-2020 – 07-03-2020

Following Construction Activities took place during above period:

Concrete Curb and Sidewalk and Driveway:

- a. East and West Concrete curb and sidewalks, HC Ramp and Driveway were constructed along Westfield Avenue, LT at following locations.
 1. East Concrete curb, Sidewalk and HC Ramp at Hollinshead Avenue, LT.
 2. Concrete driveway at Seven Eleven store, LT.
 3. Header curb along West sidewalk at Drousse Avenue, LT

HMA Milling and Asphalt Paving:

a. Asphalt and Concrete milling were completed along side streets as follows.

1. Along Cove Road – LT and RT – Asphalt Milling
2. Along Penn Street – RT – Concrete Milling.
3. Along Scovel Avenue – RT – Concrete Milling.
4. Along Scovel Avenue – LT – Asphalt Milling.
5. Horner Avenue – LT and RT – Concrete Milling.
6. Hillcrest Avenue – RT – Concrete Milling.
7. Hollinshead Avenue – LT and RT – Concrete Milling.
8. Gross Avenue – RT – Asphalt Milling.
9. Gross Avenue – LT – Concrete Milling.
10. Merchantville Avenue – LT and RT – Concrete Milling.
11. Springfield Avenue – LT – Concrete Milling
12. Lexington Avenue – LT and RT – Concrete Milling.

b. Full Depth Asphalt Construction was performed at following locations.

1. Along Marlon Avenue, RT
2. Along Horner Avenue, RT
3. Along Hollinshead Avenue, LT

Department of Public Works
Complex



Charles J. DePalma

Susan Shin-Angulo
Freeholder Liaison

2311 Egg Harbor Road
Lindenwold, NJ 08021
Phone 856.566.2980
Fax 856.566.2988

John Wolick
Director

highway@camdencounty.com

- c. Existing Manholes were reset to proposed grade.
- d. Hot Mix Asphalt 9.5 M surface Course was placed along Westfield Avenue from Sherman Avenue STA 109+50 – Tinsman Avenue 64+00

Two Week Look Ahead:

- a. Asphalt Paving along Side streets from Sherman Avenue to Lexington Avenue – LT and RT.
- b. Traffic Stripes – Long Life Epoxy Resin and Thermoplastics, RPMS, and warning signs.
- c. Grouting existing drainage pipe and cleaning existing drainage pipe.
- d. Traffic cameras installation at Derousse Avenue.
- e. Miscellaneous cleanup and punch list.

Prepared by:
Guvant Mistry
Resident Engineer

Susan Shin-Angulo
Freeholder Liaison

2311 Egg Harbor Road
Lindenwold, NJ 08021
Phone 856.566.2980
Fax 856.566.2988

John Wolick
Director

highway@camdencounty.com



Figure 1: Concrete Curb, Sidewalk and HC Ramp at Hollinshead Avenue, LT



Figure 2: Concrete driveway at Seven Eleven Store, LT

Susan Shin-Angulo
Freeholder Liaison

2311 Egg Harbor Road
Lindenwold, NJ 08021
Phone 856.566.2980
Fax 856.566.2988

John Wolick
Director

highway@camdencounty.com



Figure 3: Header curb Along West sidewalk at Derosse Avenue, LT



Figure 4: Concrete Milling along Horner Avenue, LT – Typical all side street Concrete Milling.



Figure 5: Resting Manhole to proposed grade – Typical



Figure 6: Full depth Asphalt Paving along Hollinshead Avenue, LT



Figure 7: Full depth Asphalt Paving along Marlon Avenue, RT



Figure 8: Full depth Asphalt Paving along Horner Avenue, RT

Susan Shin-Angulo
Freeholder Liaison

2311 Egg Harbor Road
Lindenwold, NJ 08021
Phone 856.566.2980
Fax 856.566.2988

John Wolick
Director

highway@camdencounty.com



Figure 9: Hot Mix Asphalt 9.5 M surface Course was placed along Westfield Avenue from Sherman Avenue STA 109+50 – Tinsman Avenue 64+00



Figure 10: Hot Mix Asphalt 9.5 M surface Course was placed along Westfield Avenue from Sherman Avenue STA 109+50 – Tinsman Avenue 64+00

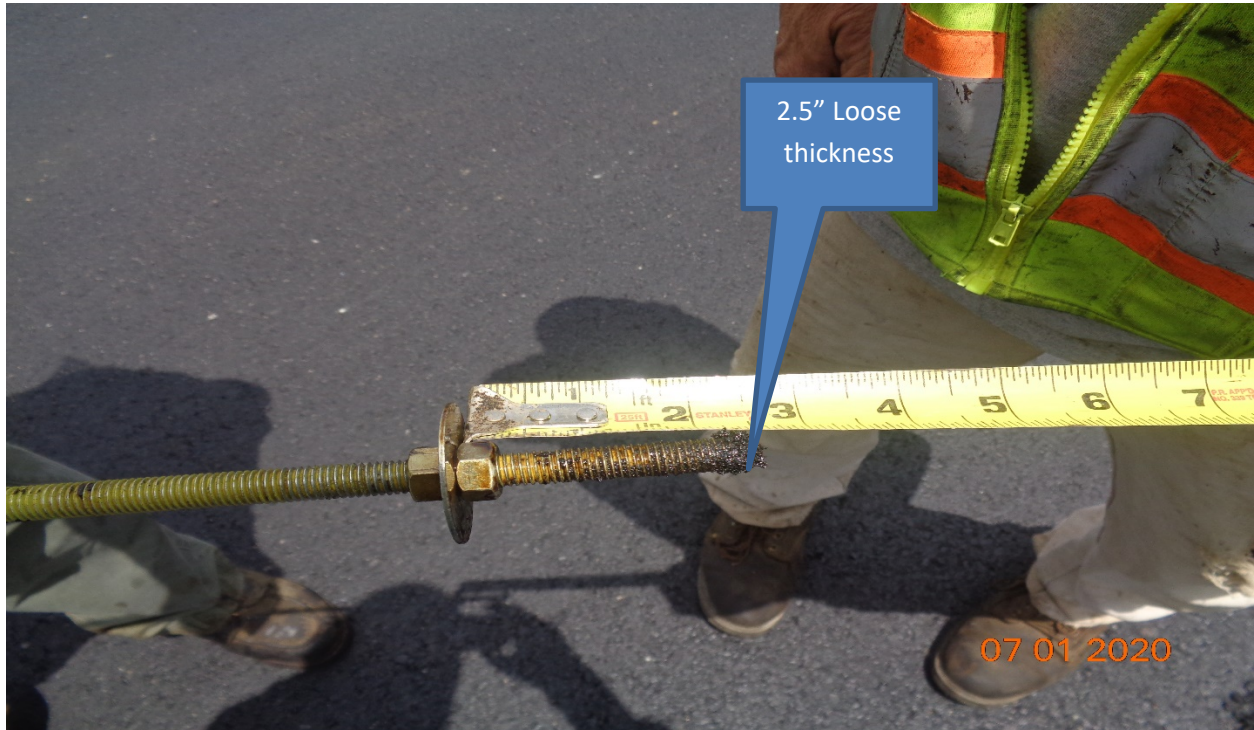


Figure 11: Hot Mix Asphalt 9.5 M surface Course was placed along Westfield Avenue from Sherman Avenue STA 109+50 – Tinsman Avenue 64+00

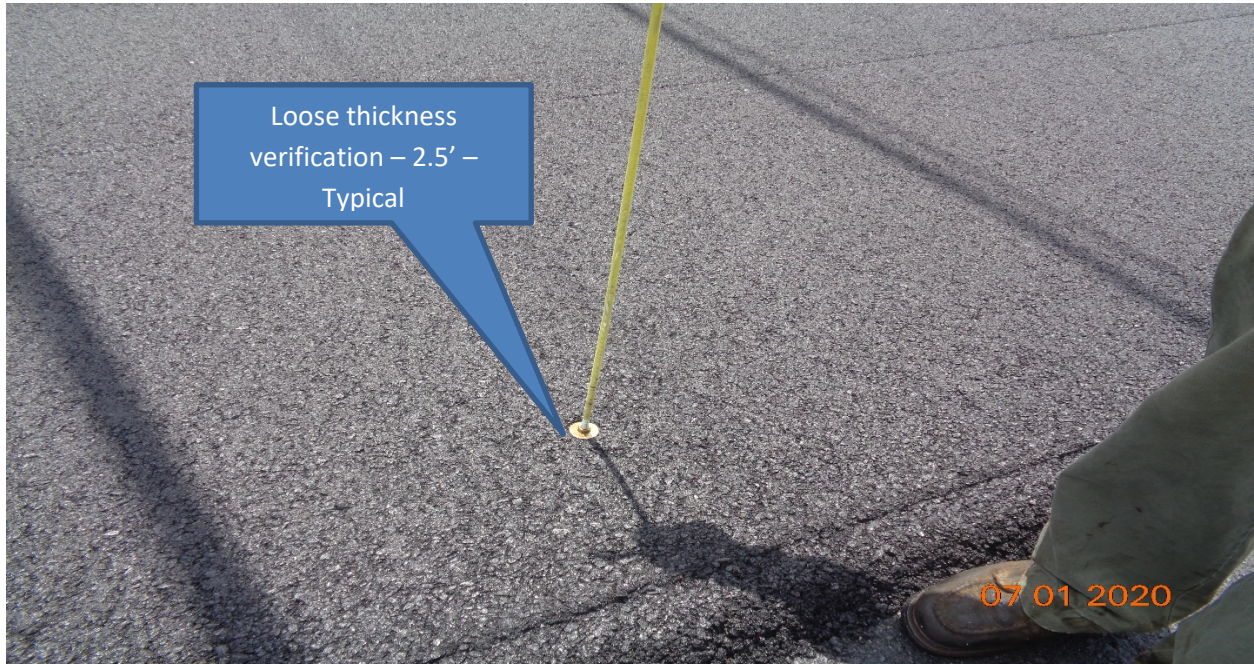


Figure 12: Hot Mix Asphalt 9.5 M surface Course was placed along Westfield Avenue from Sherman Avenue STA 109+50 – Tinsman Avenue 64+00

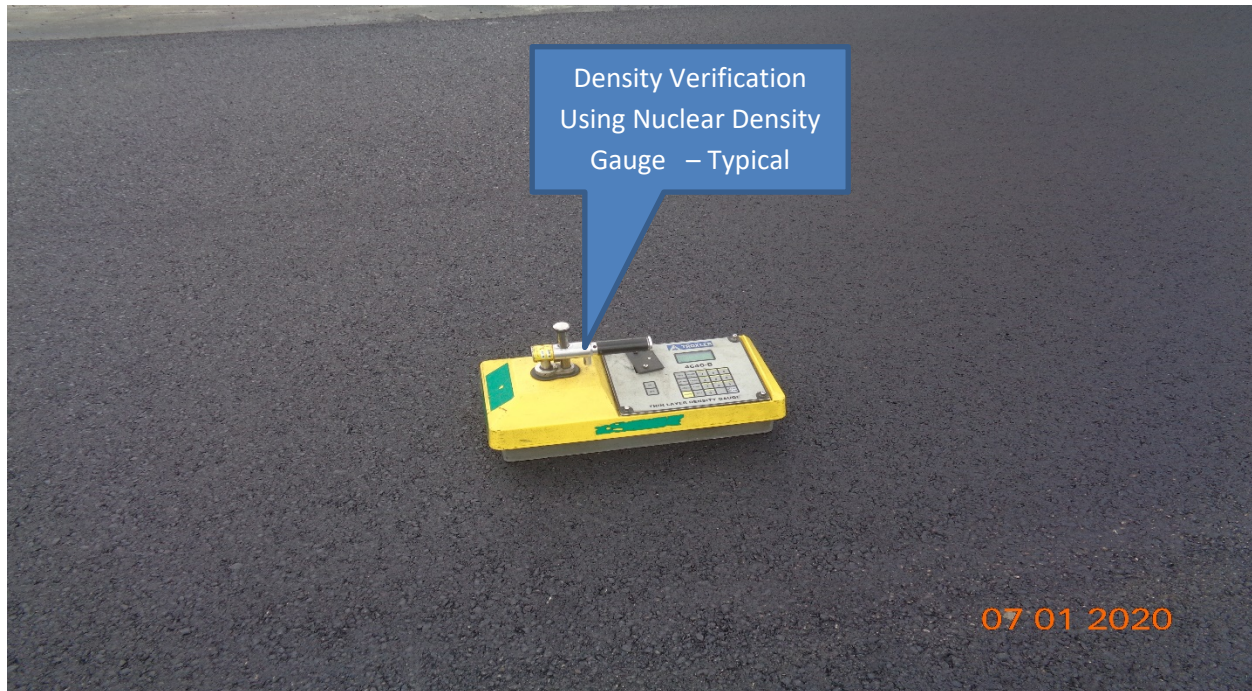


Figure 13: Hot Mix Asphalt 9.5 M surface Course was placed along Westfield Avenue from Sherman Avenue STA 109+50 – Tinsman Avenue 64+00



Figure 14: Hot Mix Asphalt 9.5 M surface Course was placed along Westfield Avenue from Sherman Avenue STA 109+50 – Tinsman Avenue 64+00



Figure 15: Hot Mix Asphalt 9.5 M surface Course was placed along Westfield Avenue from Sherman Avenue STA 109+50 – Tinsman Avenue 64+00



Figure 16: Hot Mix Asphalt 9.5 M surface Course was placed along Westfield Avenue from Sherman Avenue STA 109+50 – Tinsman Avenue 64+00



**Mill and Overlay of Westfield Avenue (CR 610) from Tinsman Avenue (MP 1.57) TO NJ Route 130 (MP 2.92)
Pennsauken Township, Camden County, New Jersey**

Notice to Proceed issued: August 30, 2019

Project Completion: August 12, 2020

Project Substantial Completion: July 13, 2020.

Project start: September 4, 2019.

**Weekly Progress Report
07-06-2020 – 07-10-2020**

Following Construction Activities took place during above period:

Concrete Curb and Sidewalk and Driveway:

- a. Asphalt was placed along concrete sidewalk, HC Ramps, and concrete driveway at following locations.
 1. Concrete driveway at Seven Eleven store, LT.
 2. Along West sidewalk at Derosse Avenue, LT
 3. Concrete driveway along Westfield Avenue STA 92+00 – 93+00, RT
 4. Along Horner Avenue, LT, and Bethel Avenue , RT
 5. Along Merchantville Avenue, RT.
- b. Topsoil was placed along concrete sidewalk, HC Ramps, and concrete driveway at following locations.
 1. Along Hollinshead Avenue, LT

HMA Milling and Asphalt Paving:

- a. Hot Mix Asphalt 9.5 M surface Course was placed for side streets along Westfield Avenue from Sherman Avenue STA 109+50 – Tinsman Avenue 64+00

Traffic Stripes Epoxy Resin and Thermoplastic:

- a. 6" Thermoplastic stripes were completed for cross walk along all side streets from Lexington Avenue to Sherman Avenue.
- b. 24" Thermoplastic stripes were completed for stop bar along all side streets from Lexington Avenue to Sherman Avenue.

Two Week Look Ahead:

- a. Traffic Stripes – Long Life Epoxy Resin and Thermoplastics, RPMS, and warning signs.
- b. Grouting existing drainage pipe and cleaning existing drainage pipe.
- c. Traffic cameras installation at Derosse Avenue.
- d. Miscellaneous cleanup and punch list.
- e. Regulatory signs.

Biweekly Progress Meeting:

- a. Biweekly Progress Meeting No. 14 was held in the field.

Prepared by:

Guvant Mistry – Resident Engineer.

Barbara Holcomb
Freeholder Liaison

2311 Egg Harbor Road
Lindenwold, NJ 08021
Phone 856.566.2980
Fax 856.566.2988

John Wolick
Director

highway@camdencounty.com



Figure 1: Hot Mix Asphalt 9.5 M surface Course was placed along Westfield Avenue from Sherman Avenue STA 109+50 – Tinsman Avenue 64+00



Figure 2: Hot Mix Asphalt 9.5M Surface course was place at all side street along Westfield Avenue from Lexington Avenue – Sherman Avenue, LT, and RT.

Barbara Holcomb
Freeholder Liaison

2311 Egg Harbor Road
Lindenwold, NJ 08021
Phone 856.566.2980
Fax 856.566.2988

John Wolick
Director

highway@camdencounty.com



Figure 3: Horner Avenue, LT – Asphalt along sidewalk



Figure 4: Concrete Driveway at Seven Eleven – Asphalt along Driveway

Barbara Holcomb
Freeholder Liaison

2311 Egg Harbor Road
Lindenwold, NJ 08021
Phone 856.566.2980
Fax 856.566.2988

John Wolick
Director

highway@camdencounty.com



Figure 5: Concrete driveway along Westfield Avenue, RT – Asphalt Along Driveway



Figure 6: East Concrete sidewalk along Merchantville Avenue, RT – Asphalt Along Sidewalk



Figure 7: West Concrete driveway along Derousse Avenue, LT – Asphalt Along sidewalk



Figure 8: Concrete driveway at Seven Eleven, LT - Brick pavers were reset at both side of driveway.



Figure 9: East Concrete sidewalk along Bethel Avenue, RT – Asphalt along sidewalk



Figure 10: East Concrete sidewalk along Hollinshead Avenue, RT – Topsoil was placed along sidewalk

Barbara Holcomb
Freeholder Liaison

2311 Egg Harbor Road
Lindenwold, NJ 08021
Phone 856.566.2980
Fax 856.566.2988

John Wolick
Director

highway@camdencounty.com



Figure 11: Thermoplastic striping along side streets from Lexington Avenue to Sherman Avenue, RT, and LT



Figure 12: Typical striping at Merchantville Avenue and Cove Road - Traffic light intersection.

Department of Public Works

Barbara Holcomb
Freeholder Liaison

John Wolick
Director



Charles J. DePalma Complex
2311 Egg Harbor Road
Lindenwold, NJ 08021
Phone 856.566.2980
Fax 856.566.2988
highway@camdencounty.com

**Mill and Overlay of Westfield Avenue (CR 610) from Tinsman Avenue (MP 1.57) TO NJ Route 130 (MP 2.92)
Pennsauken Township, Camden County, New Jersey**

Notice to Proceed issued: August 30, 2019
Project Completion: August 12, 2020
Project Substantial Completion: July 13, 2020.
Project start: September 4, 2019.

Weekly Progress Report
07-13-2020 – 07-17-2020

Following Construction Activities took place during above period:

South State Inc.:

- a. Crew from South State Inc. was not present at site therefore Reminder of contract items and Preliminary Punch list items were not performed.

Traffic Stripes Epoxy Resin and Thermoplastic:

- a. 6" Thermoplastic stripes were completed for cross walk along Derausse Avenue
- b. 24" Thermoplastic stripes were completed for stop bar along Derausse Avenue.
- c. Traffic Stripes, Thermoplastic, 8" wide at Left turn lane along Westfield Avenue.
- d. Traffic Markings, Thermoplastic for left turn lane and RR Crossing.
- e. Traffic Stripes, Long Life Epoxy Resin, 4" wide along Westfield Avenue.
- f. RPM Monodirectional, white lens.
- g. RPM Bidirectional, Amber Lens.
- h. RPM Bidirectional, Blue Lens.

Two Week Look Ahead:

- a. Grouting existing drainage pipe and cleaning existing drainage pipe.
- b. Traffic cameras installation at Derausse Avenue.
- c. Miscellaneous cleanup and punch list.
- d. Regulatory and Warning signs.

Prepared by:
Gunvant Mistry
Resident Engineer.

Barbara Holcomb
Freeholder Liaison

2311 Egg Harbor Road
Lindenwold, NJ 08021
Phone 856.566.2980
Fax 856.566.2988

John Wolick
Director

highway@camdencounty.com



Figure 1: Traffic stripes, Long Life Epoxy Resin, 4" Wide along Westfield Avenue.

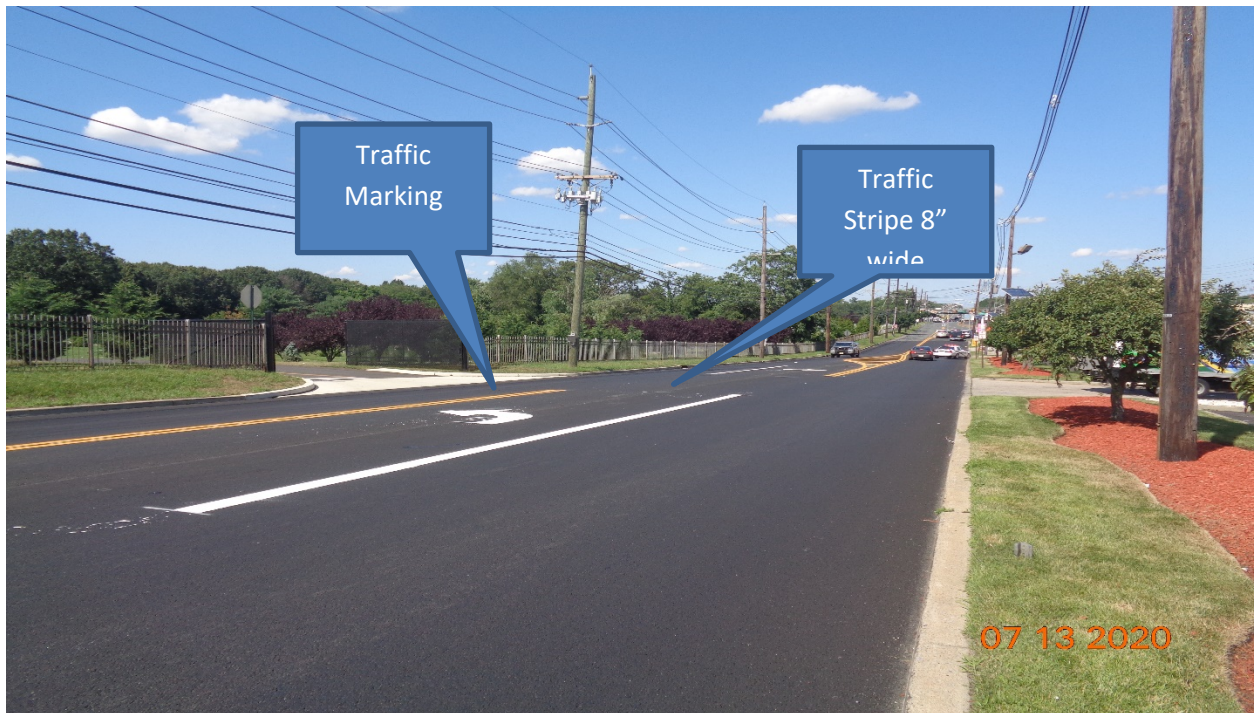


Figure 2: Traffic Stripe, Thermoplastic, 8" wide and Traffic Markings



Figure 3: Traffic Markings – RR Crossing



Figure 4: Traffic Marking – ONLY and Arrow – Typical



Figure 5: RPM – Bidirectional, Amber lens.



Figure 6: RPM – Monodirectional, White Lens.

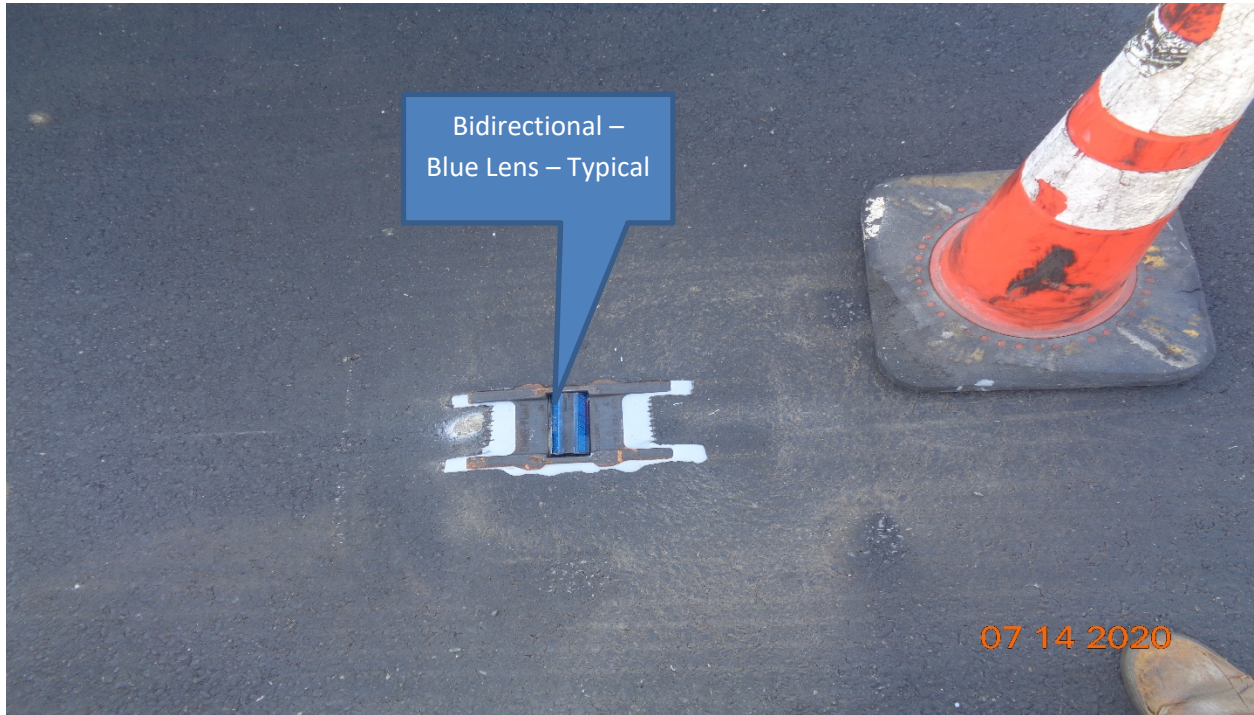


Figure 7: RPM – Bidirectional, Blue Lens.



Figure 8: Typical RPM – Approved Model by STIMSONITE – ENNIS - FLINT

Department of Public Works
Complex

Barbara Holcomb
Freeholder Liaison

John Wolick
Director



Charles J. DePalma

2311 Egg Harbor Road
Lindenwold, NJ 08021
Phone 856.566.2980
Fax 856.566.2988

highway@camdencounty.com



**South
State, Inc.**
General Contractors

July 13, 2020

TO: Ms. Kevin Becica, PE
County Engineer
Camden County

RE: Westfield Ave Overlay

SUBJ: Substantial Completion

Dear Ms. Becica,

Please accept this letter as notification that substantial completion has been achieved on the above reference project on July 10, 2020.

Please do not hesitate to contact us with any questions regarding this matter.

Sincerely,
South State, Inc.

A handwritten signature in blue ink, appearing to read 'Dan MacDonnell', is positioned above the typed name.

Dan MacDonnell
Project Manager

CC: Job File