



DEPARTMENT OF PUBLIC WORKS

ROAD WORK ALERT

BOARD OF COMMISSIONERS

Louis Cappelli, Jr., Commissioner Director
Edward T. McDonnell, Commissioner Deputy Director
Jeffrey L. Nash, Commissioner
Carmen G. Rodriguez, Commissioner
Jonathan L. Young, Sr., Commissioner
Melinda Kane, Commissioner
Almar Dyer, Commissioner

CONSTITUTIONAL ROW OFFICERS

Joseph Ripa, Clerk
Gilbert "Whip" Wilson, Sheriff
Michelle Gentek-Mayer, Surrogate
Grace C. MacAulay, Prosecutor

NAME OF PROJECT:

REHABILITATION OF KINGS HIGHWAY BRIDGE DECK OVER PATCO, BOROUGH OF HADDONFIELD

KEY FACTS

START DATE:	On or about April 18, 2022 (Weather Permitting)
CONTRACT TIME:	180 Calendar Days (Weather Permitting)
LIMITS:	Vicinity of Kings Highway/Washington Ave./Westmont Ave
PROJECT HIGHLIGHTS:	<ul style="list-style-type: none"> • Concrete Bridge Deck Repairs • Polyester Polymer Concrete (PPC) bridge deck overlay • Asphalt Mill and Overlay of Bridge Approaches • Installation of Concrete Curb, Concrete Sidewalk • Handicap Ramps Improvements
TOTAL ESTIMATED COSTS:	\$795,034.44
ANY QUESTIONS CONTACT:	Milton Peguero, JMT, Construction Manager, at (732) 718-9370 and/or Vibhuti Bhimani, Senior Engineer, Camden County Division of Engineering at 856.566.2980

FOR YOUR NEWS & EVENTS, VISIT CAMDENCOUNTY.COM
AND FOLLOW OUR SOCIAL MEDIA CHANNELS - CAMDENCOUNTYNJ



**Rehabilitation of Kings Highway (NJ41) Over PATCO Bridge
Borough of Haddonfield , Camden County, New Jersey**

**Weekly Progress Report No.1
4-18-2022 through 4-22-2022**



Figure 1: Variable Message Sign (VMS) were installed along Kings Highway

Susan Shin-Angulo
Freeholder Liaison

2311 Egg Harbor Road
Lindenwold, NJ 08021
Phone 856.566.2980
Fax 856.566.2988

John Wolick
Director

highway@camdencounty.com



Figure 2: Traffic Control and Detour Signs were installed



Figure 3 : Detour Signs for Stage 1 Construction

Susan Shin-Angulo
Freeholder Liaison

2311 Egg Harbor Road
Lindenwold, NJ 08021
Phone 856.566.2980
Fax 856.566.2988

John Wolick
Director

highway@camdencounty.com



Figure 4: Stage 1 - Striping for Lane Shift .



Figure 5: Stage 1 – Lane shift

Susan Shin-Angulo
Freeholder Liaison

2311 Egg Harbor Road
Lindenwold, NJ 08021
Phone 856.566.2980
Fax 856.566.2988

John Wolick
Director

highway@camdencounty.com



Figure 6: Washington Avenue Closed along East side.



Figure 7: Washing Avenue Closed along West Side



Figure 8: Survey of Existing Deck for Stage 1 construction.

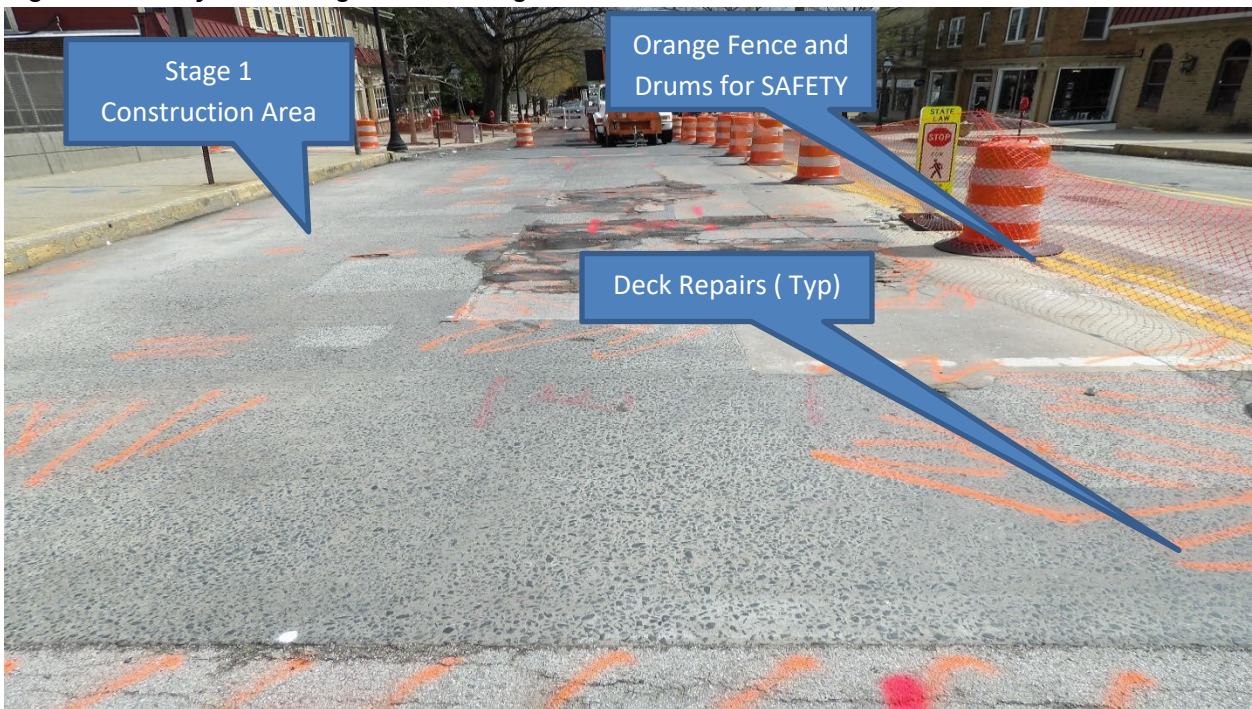


Figure 9: Stage 1 Construction Area. Deck Repaired Marked .



Figure 10: Stage 1 – Concrete removal is under progress for deck repair

Following Construction Activities took place during above period:

Construction Activities : Stage 1 Construction

Traffic Control :

1. Variable Message Sign were installed along North and South Lane of Kings Highway on 4/4/2022.
2. Traffic Control and Detour signs were installed on 4/14/2022.
3. Traffic is moving safely through lane Shift and detour along Kings Highway .

Bridge Rehabilitation :

1. Loftus Construction Mobilized on site on 4/18/2022.
2. Traffic was shift for Stage 1 construction along the South Lane of Kings Highway.
3. Existing deck survey was completed by Loftus Construction 4/18/2022. Loftus Construction submitted deck survey to designer on 4/18/2022.
4. Deck sounding was completed.
5. Deck repair Type B is under progress. Removal of concrete for Type B Deck repair is under progress.

Contractors Two Week Look Ahead :

1. Mobilized to Job site
2. Implements Stage 1 lane shift and Washington Avenue Detour.
3. Survey Existing Bridge Deck.
4. Sound deck and determine Type B Deck Repairs.
5. Remove concrete and Prepare Type B deck repairs.

Contract Information:

Notice to Proceed Date : April 18,2022

Project Completion: October 15,2022

Project Substantial Completion: September 15,2022

Project start Date : April 18, 2022

Bid opening Date : February 8,2022

Initial Award: March 7,2022

Contract Complete Percentage:

Stop Work: N/A

Amended NTP : N/A

Prepared By
Gunvant Mistry
Assistance Project Manger

Department of Public Works

Almar Dyer
Commissioner, Liaison

John Wolick
Director

camden county

Making It Better. Together.



An Employee Owned Company

Charles J. DePalma Complex
2311 Egg Harbor Road
Lindenwold, NJ 08021
Phone 856.566.2980
Fax 856.566.2988
highway@camdencounty.co
Camden County .com

**Rehabilitation of Kings Highway (NJ41) Over PATCO Bridge
Borough of Haddonfield , Camden County, New Jersey**

**Weekly Progress Report No. 2
4-25-2022 through 4-29-2022**



Figure 1 – Top of deck, Stage 1, was sounded for deteriorated concrete areas



Figure 2 – Workers begin removal of deteriorated concrete areas



Figure 3 – Removal of deteriorated concrete progressed

Almar Dyer
Commissioner, Liaison

John Wolick
Director

highway@camdencounty.com



Figure 4 – Cleaning areas to be patched

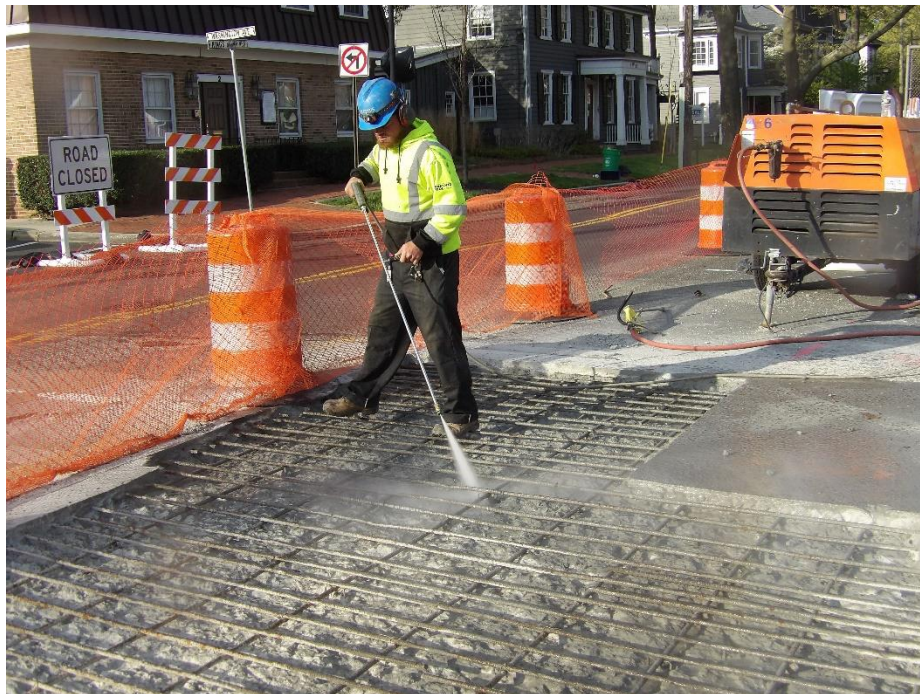


Figure 5 – Final power wash after concrete removal

Almar Dyer
Commissioner, Liaison

John Wolick
Director

highway@camdencounty.com



Figure 6 – Supplemental reinforcing tied in where required



Figure 7 – Epoxy concrete bonding agent applied to concrete and reinforcing

Almar Dyer
Commissioner, Liaison

John Wolick
Director

highway@camdencounty.com



Figure 8 – Concrete was poured and finished



Figure 9 – Concrete was sprayed with a liquid curing compound and left to set



Figure 10 – Workers resume removal of deteriorated concrete from Stage 1 for the next pour

Following Construction Activities took place during above period:

Construction Activities: Stage 1 Construction

Traffic Control :

1. Variable Message Sign are in place and operational.
2. Traffic Control and Detour signs are in place and in good condition. No issues.
3. Traffic is moving safely through the lane shift and the detour for Washington Avenue along Kings Highway.

Bridge Rehabilitation:

1. Loftus Construction started top of deck concrete repairs, marking out deteriorated concrete areas and started Type B repairs.
2. There were no deck break-throughs (Type C) and Type B concrete removal continued.
3. The deteriorated concrete removal for the first concrete pour was completed, areas cleaned, and power washed, and concrete was poured on 4-28-2022.
4. Areas for the second concrete pour for Stage 1 were marked out and Type B deck repairs continue. Removal of concrete for Type B Deck repair is in progress.

Contractors Two Week Look Ahead :

1. Continue with concrete deck repairs in Stage 1.
2. Remove the existing Stage 1 approach sidewalks and curbs in need of replacement.
3. Begin formwork for the new approach curbs and sidewalks.
4. Excavate behind the bridge headers and begin demolition of the existing head blocks, Stage 1.
5. Drill in header reinforcing and begin installing formwork for the new header concrete pours.

Contract Information:

Notice to Proceed Date : April 18,2022

Project Completion: October 15,2022

Project Substantial Completion: September 15,2022

Project start Date : April 18, 2022

Bid opening Date : February 8,2022

Initial Award: March 7,2022

Contract Complete Percentage:

Stop Work: N/A

Amended NTP : N/A

Prepared By
Mark S. Steffens
Resident Engineer/Construction Inspector

Department of Public Works

Almar Dyer
Commissioner, Liaison

John Wolick
Director



Charles J. DePalma Complex
2311 Egg Harbor Road
Lindenwold, NJ 08021
Phone 856.566.2980
Fax 856.566.2988
highway@camdencounty.co
Camden County .com

**Rehabilitation of Kings Highway (NJ41) Over PATCO Bridge
Borough of Haddonfield , Camden County, New Jersey**

**Weekly Progress Report No. 4
5-09-2022 through 5-13-2022**



Figure 1 – Demolition of the existing west abutment header



Figure 2 – Workers chipping the deck end for the PPC haunch/joint



Figure 3 – Removal of existing headers and deck ends completed



Figure 4 – Drilled holes in existing backwall for new header reinforcing



Figure 5 – Workers begin fabricating and installing header formwork



Figure 6 – New header formwork installation in progress



Figure 7 – New header reinforcing arrived and unloaded



Figure 8 – Worker fabricating header formwork



Figure 9 – Header reconstruction is in progress

Almar Dyer
Commissioner, Liaison

2311 Egg Harbor Road
Lindenwold, NJ 08021
Phone 856.566.2980
Fax 856.566.2988

John Wolick
Director

highway@camdencounty.com

Following Construction Activities took place during above period:

Construction Activities: Stage 1 Construction

Traffic Control :

1. Variable Message Sign are in place and operational.
2. Traffic Control and Detour signs are in place and in good condition. No issues.
3. Traffic is moving safely through the lane shift and the detour for Washington Avenue along Kings Highway.

Bridge Rehabilitation Work:

1. Loftus Construction completed the excavations behind the existing abutment headers.
2. Demolition of the concrete headers and deck ends was completed at both abutments.
3. Workers surveyed and set the proposed roadway header grades, Stage 1.
4. Fabrication and installation of the formwork for the new headers is in progress.
5. New header reinforcing installation completed.

Contractor's Two Week Look Ahead :

1. Complete the new header formwork.
2. Check and tighten reinforcing where required, and pour both abutment headers.
3. Prep concrete surface and pour the 5" x 1' end of deck PPC haunches at the strip seal deck joints.
4. Begin formwork for the new approach curbs and sidewalks, pour concrete.

Contract Information:

Notice to Proceed Date : April 18,2022

Project Completion: October 15,2022

Project Substantial Completion: September 15,2022

Project start Date : April 18, 2022

Bid opening Date : February 8,2022

Initial Award: March 7,2022

Contract Complete Percentage: Approximately 20%

Stop Work: N/A

Amended NTP : N/A

Prepared By
Mark S. Steffens
Resident Engineer/Construction Inspector

Department of Public Works

Almar Dyer
Commissioner, Liaison

John Wolick
Director

camden county

Making It Better. Together.



Charles J. DePalma Complex
2311 Egg Harbor Road
Lindenwold, NJ 08021
Phone 856.566.2980
Fax 856.566.2988
highway@camdencounty.co
Camden County .com

**Rehabilitation of Kings Highway (NJ41) Over PATCO Bridge
Borough of Haddonfield , Camden County, New Jersey**

**Weekly Progress Report No. 4
5-16-2022 through 5-20-2022**

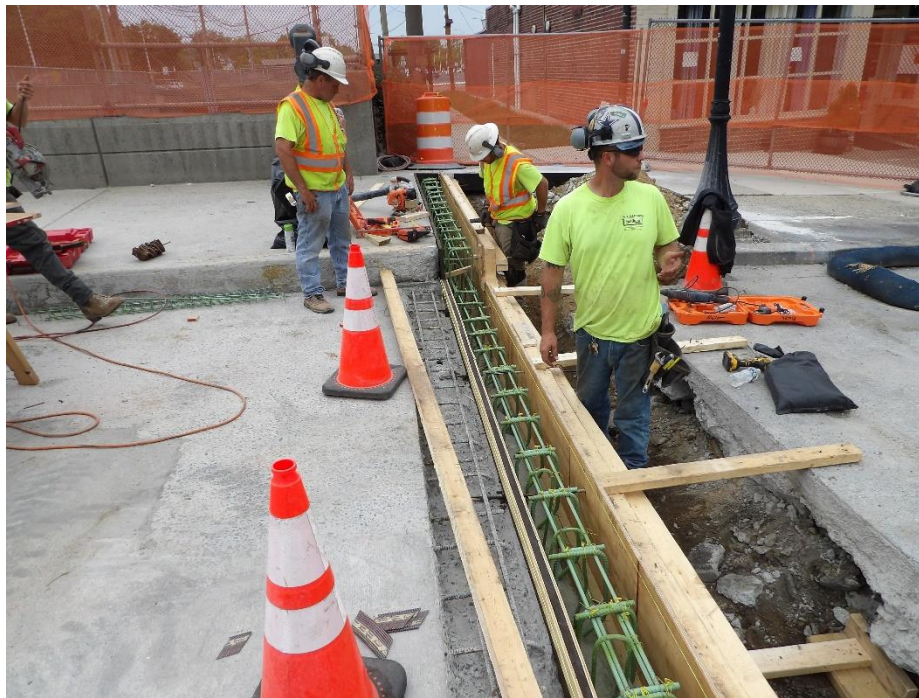


Figure 1 – Workers fabricated and installed new header formwork



Figure 2 – Workers completed formwork installation for both new headers, Stage 1

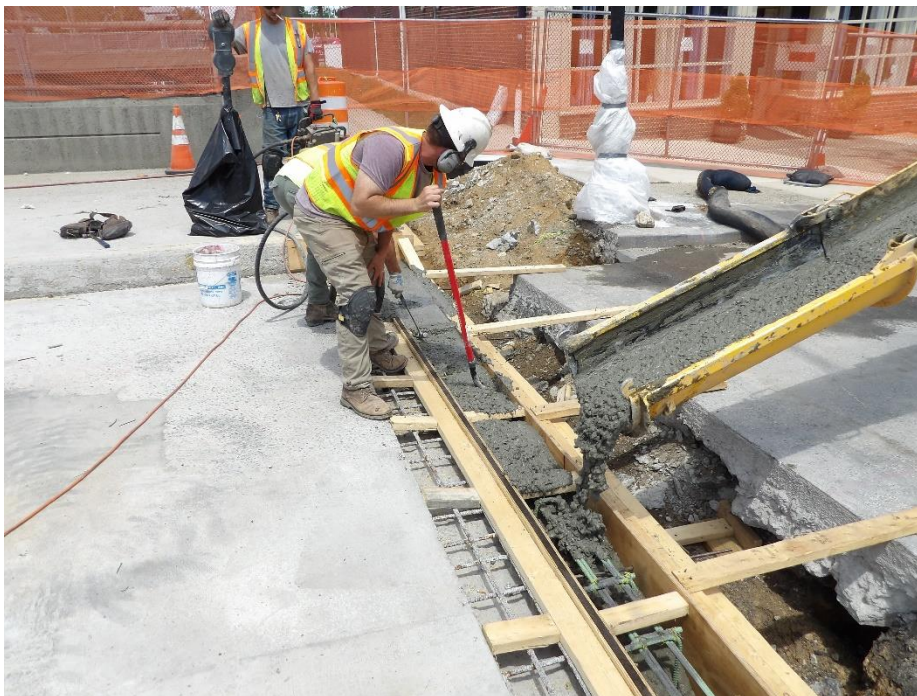


Figure 3 – Workers pouring new header concrete

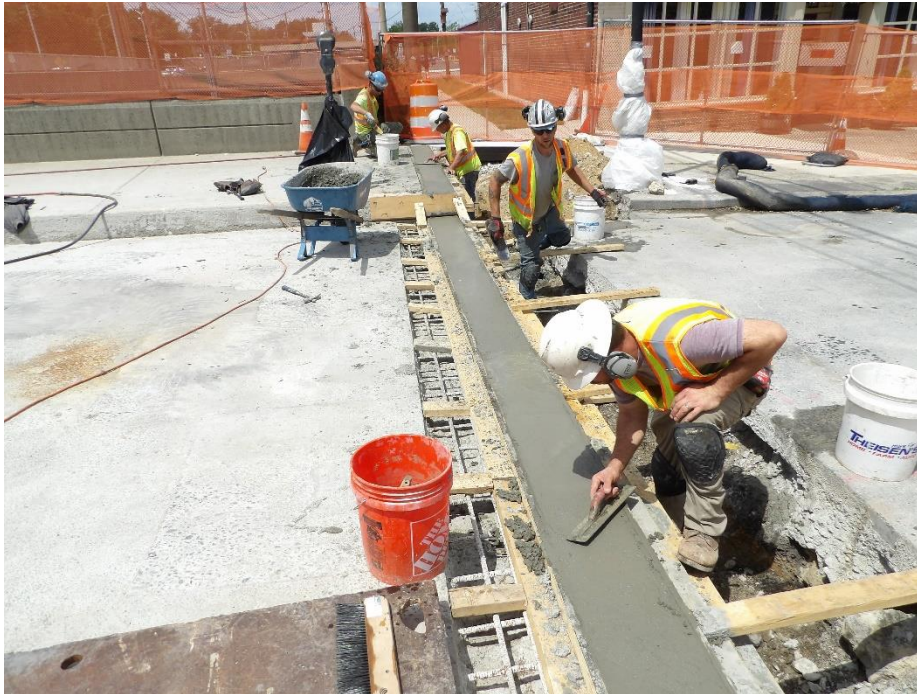


Figure 4 – Concrete for both headers was placed and finished

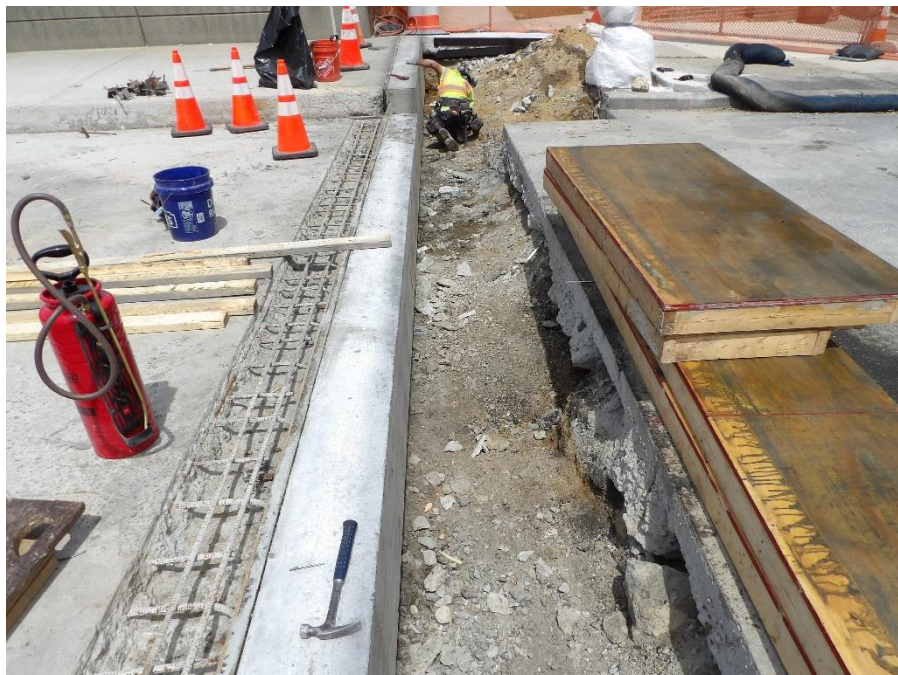


Figure 5 – Workers removed header forms at each abutment



Figure 6 – Excavations behind the headers were compacted and prepared for backfill



Figure 7 – Backfill bulkheads installed where required



Figure 8 – Lightweight flowable backfill placed at each abutment

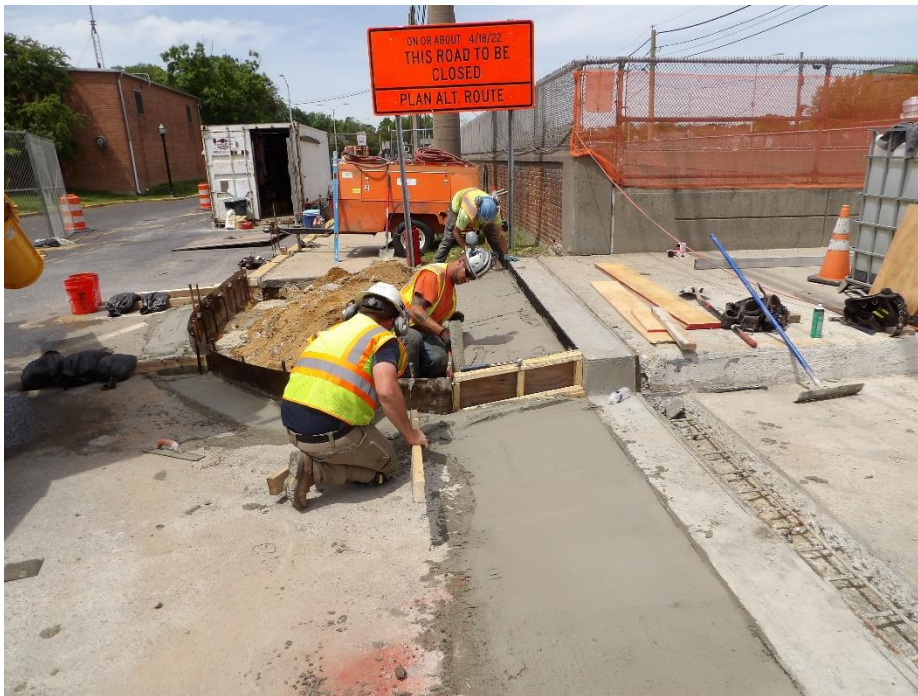


Figure 9 – Backfill was finished at each end



Figure 10 – Workers began forming curbs and sidewalks

Following Construction Activities took place during above period:

Construction Activities: Stage 1 Construction

Traffic Control:

1. Variable Message Signs along Kings Highway are in place and operational.
2. Traffic Control and Detour signs are in place and in good condition. No issues.
3. Traffic is moving safely through the lane shift and the detour for Washington Avenue along Kings Highway.

Bridge Rehabilitation Work:

1. Loftus Construction completed forming and pouring concrete for both abutment headers, Stage 1.
2. Both headers were stripped of formwork.
3. Workers leveled, graded, and compacted the sub-base in the excavations behind each header.
4. The header, approach sidewalk areas and void areas beneath the existing approach roadways were backfilled with flowable fill up to the existing approach roadway grades. Flowable fill was used for backfill in lieu of soil and asphalt materials as detailed on the design plans due to the unexpected discovery of voids beneath the roadway during excavation for the header reconstruction.
5. The bulkhead forms in the backfilled areas were stripped.
6. Workers began leveling and grading the approach curbs and sidewalk areas.
7. Formwork fabrication and installation began for the north side approach curbs and sidewalks.

Contractor's Two Week Look Ahead :

1. Finish forming the curbs and sidewalks on the north side, Stage 1.
2. Pour curbs and sidewalks, strip formwork.
3. Sandblast and prepare the concrete surface and pour the 5" x 1' end of deck PPC haunches at the strip seal deck joints. This would complete the initial reconstruction work in Stage 1.
4. Reconfigure the roadway line striping and switch the traffic pattern to the Stage 2 configuration.
5. Survey existing top of deck, header, and sidewalk grades in Stage 2.
6. Sound the concrete deck and mark-out deteriorated areas for removal.
7. Begin removing deteriorated concrete and making Type B deck repairs.

NOTICE: After Stage 2 reconstruction is complete (projected to be the week of 6-20 or 6-27, subject to change), Kings Highway will be temporarily closed in the vicinity of the PATCO overpass. A well-marked detour will be in place prior to the closure to direct traffic around the bridge/roadway closure. The closure with the detour is scheduled to be in place for a three-to-four-week timeframe to allow for construction of the final phase of the reconstruction project. All businesses will remain open during the closure and can be accessed from either side of the detour. Our apologies in advance for the minor inconvenience.

Department of Public Works
Complex



Charles J. DePalma

Almar Dyer
Commissioner, Liaison

2311 Egg Harbor Road
Lindenwold, NJ 08021
Phone 856.566.2980
Fax 856.566.2988

John Wolick
Director

highway@camdencounty.com

Contract Information:

Notice to Proceed Date : April 18,2022

Project Completion: October 15,2022

Project Substantial Completion: September 15,2022

Project start Date : April 18, 2022

Bid opening Date : February 8,2022

Initial Award: March 7,2022

Contract Complete Percentage: Approximately 20%

Stop Work: N/A

Amended NTP : N/A

Prepared By

Mark S. Steffens

Resident Engineer/Construction Inspector

Department of Public Works

Almar Dyer
Commissioner, Liaison

John Wolick
Director

camden county

Making It Better. Together.



An Employee Owned Company

Charles J. DePalma Complex
2311 Egg Harbor Road
Lindenwold, NJ 08021
Phone 856.566.2980
Fax 856.566.2988
highway@camdencounty.co
Camden County .com

**Rehabilitation of Kings Highway (NJ41) Over PATCO Bridge
Borough of Haddonfield , Camden County, New Jersey**

**Weekly Progress Report No. 4
5-16-2022 through 5-20-2022**

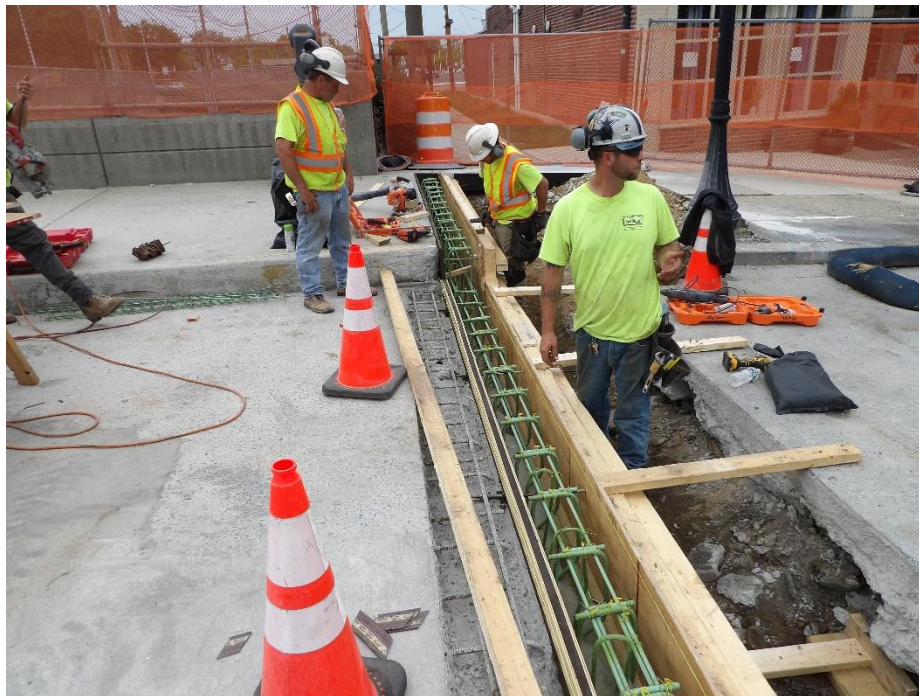


Figure 1 – Workers fabricated and installed new header formwork



Figure 2 – Workers completed formwork installation for both new headers, Stage 1

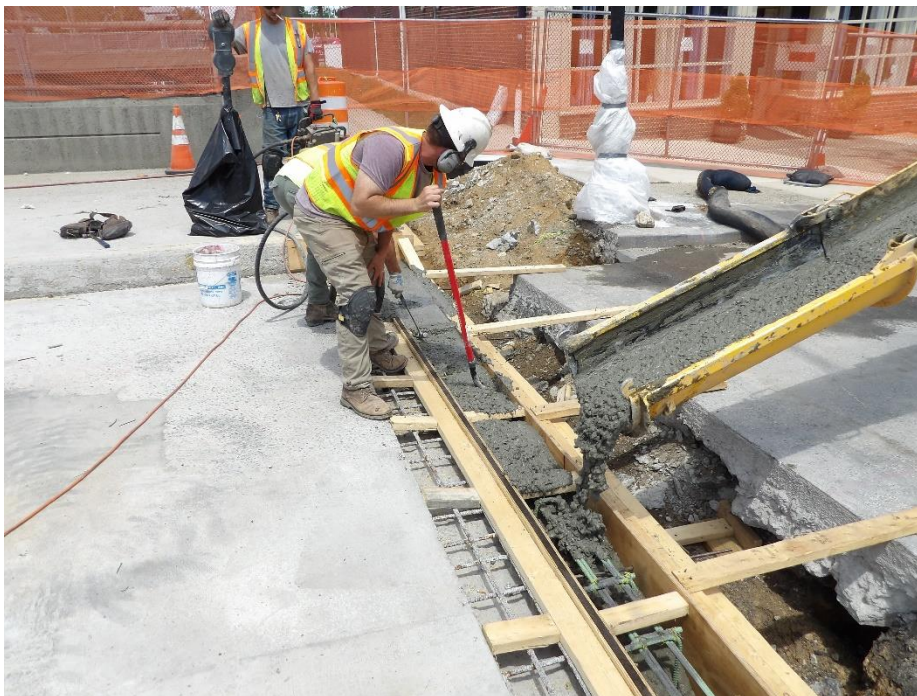


Figure 3 – Workers pouring new header concrete

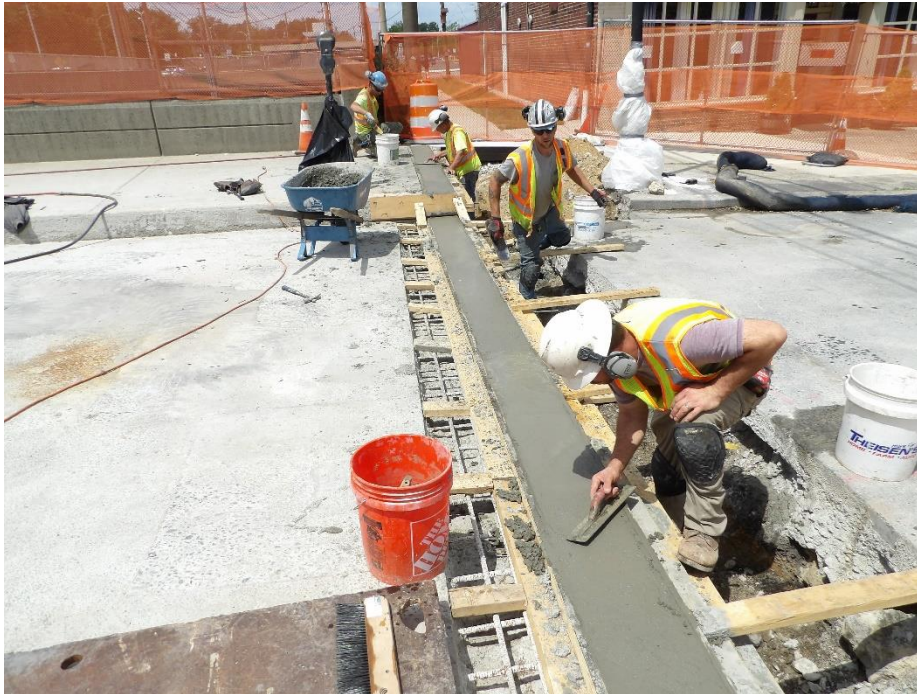


Figure 4 – Concrete for both headers was placed and finished

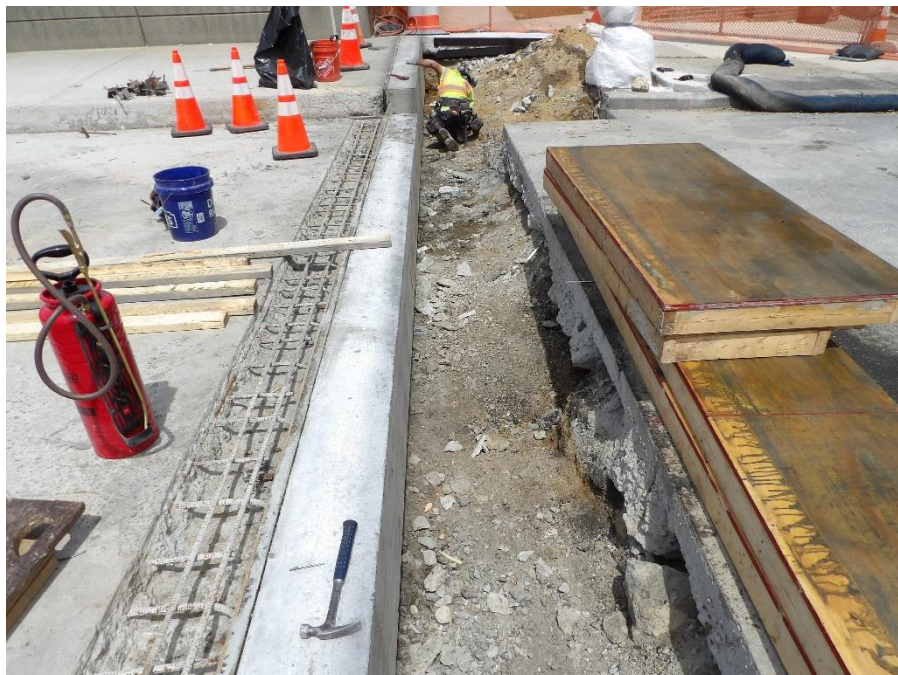


Figure 5 – Workers removed header forms at each abutment



Figure 6 – Excavations behind the headers were compacted and prepared for backfill



Figure 7 – Backfill bulkheads installed where required



Figure 8 – Lightweight flowable backfill placed at each abutment

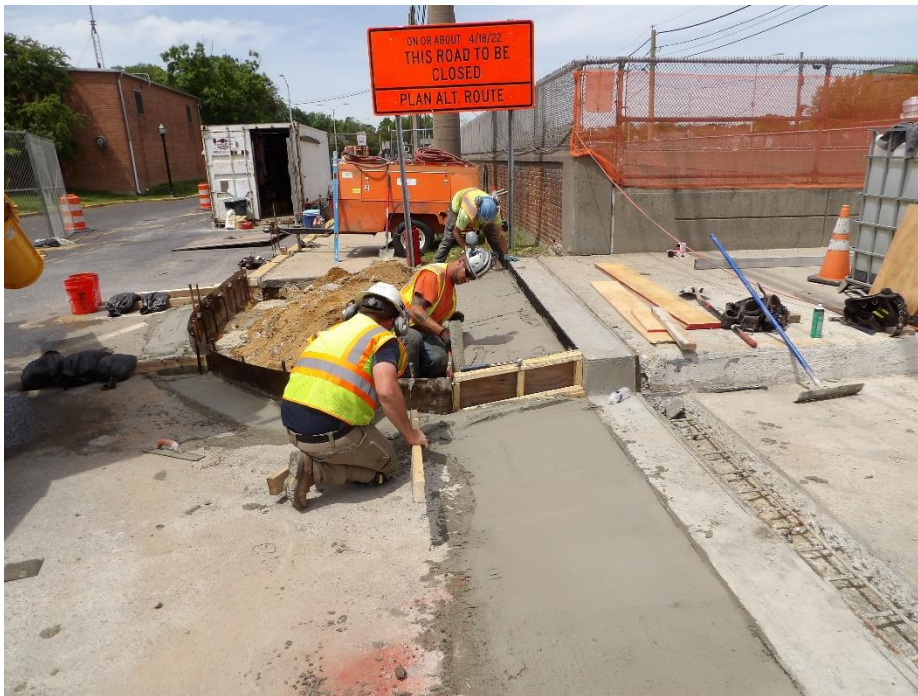


Figure 9 – Backfill was finished at each end



Figure 10 – Workers began forming curbs and sidewalks

Following Construction Activities took place during above period:

Construction Activities: Stage 1 Construction

Traffic Control:

1. Variable Message Signs along Kings Highway are in place and operational.
2. Traffic Control and Detour signs are in place and in good condition. No issues.
3. Traffic is moving safely through the lane shift and the detour for Washington Avenue along Kings Highway.

Bridge Rehabilitation Work:

1. Loftus Construction completed forming and pouring concrete for both abutment headers, Stage 1.
2. Both headers were stripped of formwork.
3. Workers leveled, graded, and compacted the sub-base in the excavations behind each header.
4. The header, approach sidewalk areas and void areas beneath the existing approach roadways were backfilled with flowable fill up to the existing approach roadway grades. Flowable fill was used for backfill in lieu of soil and asphalt materials as detailed on the design plans due to the unexpected discovery of voids beneath the roadway during excavation for the header reconstruction.
5. The bulkhead forms in the backfilled areas were stripped.
6. Workers began leveling and grading the approach curbs and sidewalk areas.
7. Formwork fabrication and installation began for the north side approach curbs and sidewalks.

Contractor's Two Week Look Ahead :

1. Finish forming the curbs and sidewalks on the north side, Stage 1.
2. Pour curbs and sidewalks, strip formwork.
3. Sandblast and prepare the concrete surface and pour the 5" x 1' end of deck PPC haunches at the strip seal deck joints. This would complete the initial reconstruction work in Stage 1.
4. Reconfigure the roadway line striping and switch the traffic pattern to the Stage 2 configuration.
5. Survey existing top of deck, header, and sidewalk grades in Stage 2.
6. Sound the concrete deck and mark-out deteriorated areas for removal.
7. Begin removing deteriorated concrete and making Type B deck repairs.

NOTICE: After Stage 2 reconstruction is complete (projected to be the week of 6-20 or 6-27, subject to change), Kings Highway will be temporarily closed in the vicinity of the PATCO overpass. A well-marked detour will be in place prior to the closure to direct traffic around the bridge/roadway closure. The closure with the detour is scheduled to be in place for a three-to-four-week timeframe to allow for construction of the final phase of the reconstruction project. All businesses will remain open during the closure and can be accessed from either side of the detour. Our apologies in advance for the minor inconvenience.

Department of Public Works
Complex



Charles J. DePalma

Almar Dyer
Commissioner, Liaison

2311 Egg Harbor Road
Lindenwold, NJ 08021
Phone 856.566.2980
Fax 856.566.2988

John Wolick
Director

highway@camdencounty.com

Contract Information:

Notice to Proceed Date : April 18,2022

Project Completion: October 15,2022

Project Substantial Completion: September 15,2022

Project start Date : April 18, 2022

Bid opening Date : February 8,2022

Initial Award: March 7,2022

Contract Complete Percentage: Approximately 20%

Stop Work: N/A

Amended NTP : N/A

Prepared By
Mark S. Steffens
Resident Engineer/Construction Inspector

Department of Public Works

Almar Dyer
Commissioner, Liaison

John Wolick
Director

camden county

Making It Better. Together.



Charles J. DePalma Complex
2311 Egg Harbor Road
Lindenwold, NJ 08021
Phone 856.566.2980
Fax 856.566.2988
highway@camdencounty.co
Camden County .com

**Rehabilitation of Kings Highway (NJ41) Over PATCO Bridge
Borough of Haddonfield, Camden County, New Jersey**

**Weekly Progress Report No. 5
5-23-2022 through 5-27-2022**



Figure 1 – Workers fabricated and installed new approach curb formwork



Figure 2 – Workers poured the approach curb concrete, Stage 1



Figure 3 – Workers prepared the sub-base for sidewalk concrete pours



Figure 4 – Concrete for both north approach sidewalks was placed and finished



Figure 5 – New approach sidewalk with ADA ramp, northwest corner

Almar Dyer
Commissioner, Liaison

John Wolick
Director



Figure 6 – Enclosure set up for sandblasting operation for the deck end PPC joint



Figure 7 – Workers mixed and poured the deck joint PPC

Almar Dyer
Commissioner, Liaison

John Wolick
Director



Figure 8 – Both deck end joint PPC pours were completed



Figure 9 – Stage 1 reconstruction work has been completed

Following Construction Activities took place during above period:

Construction Activities: Stage 1 Construction

Traffic Control:

1. Variable Message Signs along Kings Highway are in place and operational.
2. Traffic Control and Detour signs are in place and in good condition. No issues.
3. Traffic is moving safely through the lane shift and the detour for Washington Avenue along Kings Highway.

Bridge Rehabilitation Work:

1. Loftus Construction completed forming and pouring the concrete curbs and sidewalks at the northeast and northwest approach sidewalks, Stage 1.
2. Workers mixed and poured the PPC (polyester polymer concrete) for the deck end haunch/joint areas.
3. Workers cleaned the deck and adjacent work areas, packed up materials and equipment in preparation for relocating to the south side of the bridge to start the Stage 2 reconstruction.

Contractor's Two Week Look Ahead:

1. Reconfigure the roadway line striping and switch the traffic pattern to the Stage 2 configuration.
2. Survey existing top of deck, header, and sidewalk grades in Stage 2.
3. Sound the concrete deck and mark-out deteriorated areas for removal.
4. Begin removing deteriorated concrete and making Type B deck repairs.

NOTICE: After Stage 2 reconstruction is complete (projected to be the week of 7-18 or 7-25, subject to change), Kings Highway will be temporarily closed in the vicinity of the PATCO overpass. A well-marked detour will be in place prior to the closure to direct traffic around the bridge/roadway closure. The closure with the detour is scheduled to be in place for a three-to-four-week timeframe to allow for construction of the final phase of the reconstruction project. All businesses will remain open during the closure and can be accessed from either side of the detour.

Department of Public Works



Almar Dyer
Commissioner, Liaison

John Wolick
Director

Charles J. DePalma Complex
2311 Egg Harbor Road
Lindenwold, NJ 08021
Phone 856.566.2980
Fax 856.566.2988
highway@camdencounty.com

Contract Information:

Notice to Proceed Date : April 18,2022

Project Completion: October 15,2022

Project Substantial Completion: September 15,2022

Project start Date : April 18, 2022

Bid opening Date : February 8,2022

Initial Award: March 7,2022

Contract Complete Percentage: Approximately 40%

Stop Work: N/A

Amended NTP : N/A

Prepared By
Mark S. Steffens
Resident Engineer/Construction Inspector

**Rehabilitation of Kings Highway Bridge (NJ Route 41) Over PATCO Speedline
Borough of Haddonfield, Camden County, New Jersey**

**Weekly Progress Report No. 8
6-6-2022 through 6-10-2022**



Figure 1 – Workers began to remove deteriorated concrete from the top of deck in Stage 2

Department of Public Works
Charles J. DePalma Complex

Almar Dyer
Commissioner, Liaison

John Wolick
Director

2311 Egg Harbor Road
Lindenwold, NJ 08021
Phone 856.566.2980
Fax 856.566.2988

highway@camdencounty.com



Figure 2 – Saw cutting and concrete removal progressed



Figure 3 – Workers completed the removal for the first concrete pour

Department of Public Works
Charles J. DePalma Complex

Almar Dyer
Commissioner, Liaison

John Wolick
Director

2311 Egg Harbor Road
Lindenwold, NJ 08021
Phone 856.566.2980
Fax 856.566.2988
highway@camdencounty.com



Figure 4 – Workers cleaned the areas to be patched

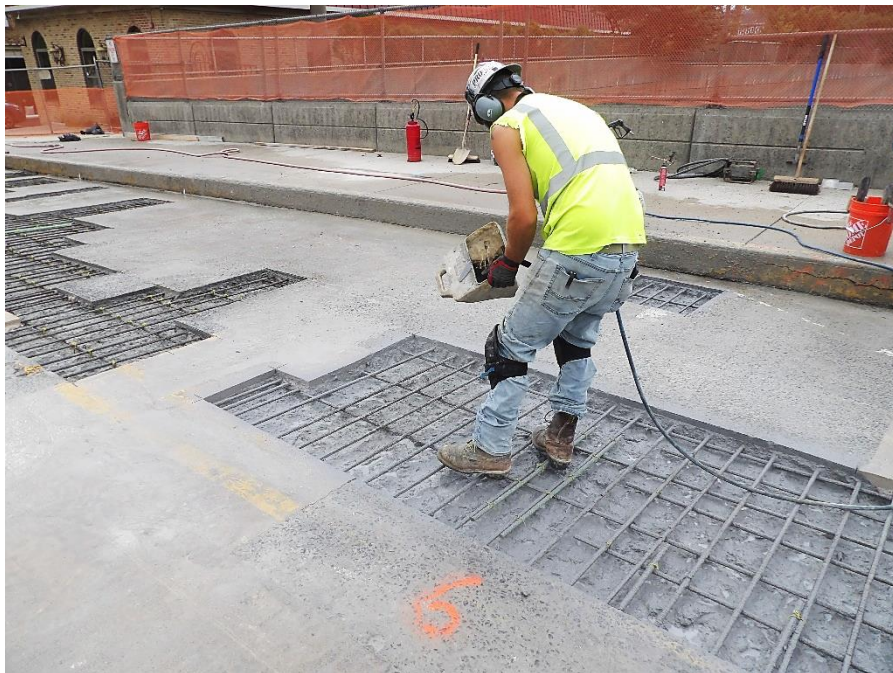


Figure 5 – After cleaning, the patch areas were sprayed with a concrete bonding agent

Department of Public Works
Charles J. DePalma Complex

Almar Dyer
Commissioner, Liaison

John Wolick
Director

2311 Egg Harbor Road
Lindenwold, NJ 08021
Phone 856.566.2980
Fax 856.566.2988
highway@camdencounty.com



Figure 6 – Workers poured and finished the concrete patches



Figure 7 – Workers marked out deteriorated areas for removal in the inner lane

Department of Public Works
Charles J. DePalma Complex

Almar Dyer
Commissioner, Liaison

John Wolick
Director

2311 Egg Harbor Road
Lindenwold, NJ 08021
Phone 856.566.2980
Fax 856.566.2988

highway@camdencounty.com



Figure 7 – Workers began removal of deteriorated deck concrete for the second pour



Figure 7 – Workers made progress with deteriorated concrete removal in the inner lane

Department of Public Works
Charles J. DePalma Complex

Almar Dyer
Commissioner, Liaison

John Wolick
Director

2311 Egg Harbor Road
Lindenwold, NJ 08021
Phone 856.566.2980
Fax 856.566.2988
highway@camdencounty.com

Construction Activity: Stage 2 Construction

The following construction activities took place during the time noted above.

Traffic Control:

1. Variable Message Signs along Kings Highway are in place and operational.
2. Traffic Control and detour signs are in place and in good condition. No issues.
3. Traffic is moving safely through the lane shift and the detour for Washington Avenue along Kings Highway.

Bridge Rehabilitation Work:

1. Loftus Construction continued with the removal of deteriorated deck concrete removal for the Type B bridge deck repairs in Stage 2.
2. The removal was completed, and the concrete was poured for the first round of repairs in the outer lane, adjacent to the curb line.
3. Workers sounded the deck and marked out the deteriorated areas for removal in the center lane for the second concrete pour, Stage 2.
4. They began concrete removal in those areas, making progress this week. This work is ongoing and will continue until completed early next week.

Contractor's Two Week Look Ahead:

1. Continue and complete Type B concrete deck repairs.
2. Saw cut across the asphalt approach roadway and excavate behind the bridge abutments.
3. Remove the existing approach sidewalks and curbs on the south side of Kings Highway.
4. Mark out limits and begin demolition and removal of the existing abutment headers for reconstruction.
5. Begin concrete formwork for the new bridge headers.

NOTICE: After Stage 2 reconstruction is complete (projected to be the week of 7-18 or 7-25, subject to change), Kings Highway will be temporarily closed in the vicinity of the PATCO overpass. A well-marked detour will be in place prior to the closure to direct traffic around the bridge/roadway closure. The closure with the detour is scheduled to be in place for a three-to-four-week timeframe to allow for construction of the final phase of the reconstruction project. All businesses will remain open during the closure and can be accessed from either side of the detour.

Department of Public Works
Charles J. DePalma Complex

Almar Dyer
Commissioner, Liaison

John Wolick
Director

2311 Egg Harbor Road
Lindenwold, NJ 08021
Phone 856.566.2980
Fax 856.566.2988
highway@camdencounty.com

Contract Information:

Notice to Proceed Date: April 18,2022

Project Completion: October 15,2022

Project Substantial Completion: September 15,2022

Project start Date: April 18, 2022

Bid opening Date: February 8,2022

Initial Award: March 7,2022

Contract Complete Percentage: Approximately 45%

Prepared By:

Mark S. Steffens
Resident Engineer/Construction Inspector

**Rehabilitation of Kings Highway Bridge (NJ Route 41) Over PATCO Speedline
Borough of Haddonfield, Camden County, New Jersey**

**Weekly Progress Report No. 9
6-13-2022 through 6-17-2022**



Figure 1 – Workers continued to remove deteriorated concrete from the top of deck in Stage 2

Department of Public Works
Charles J. DePalma Complex

Almar Dyer
Commissioner, Liaison

John Wolick
Director

2311 Egg Harbor Road
Lindenwold, NJ 08021
Phone 856.566.2980
Fax 856.566.2988

highway@camdencounty.com



Figure 2 – Saw cutting and concrete removal progressed



Figure 3 – Workers completed the removal for the second concrete pour and cleaned

Department of Public Works
Charles J. DePalma Complex

Almar Dyer
Commissioner, Liaison

John Wolick
Director

2311 Egg Harbor Road
Lindenwold, NJ 08021
Phone 856.566.2980
Fax 856.566.2988
highway@camdencounty.com



Figure 4 – After cleaning, the patch areas were sprayed with a concrete bonding agent



Figure 5 – Workers poured the patch concrete

Department of Public Works
Charles J. DePalma Complex

Almar Dyer
Commissioner, Liaison

John Wolick
Director

2311 Egg Harbor Road
Lindenwold, NJ 08021
Phone 856.566.2980
Fax 856.566.2988

highway@camdencounty.com



Figure 6 – Workers poured and finished the concrete patches



Figure 7 – Stage 2 patching was completed

Department of Public Works
Charles J. DePalma Complex

Almar Dyer
Commissioner, Liaison

John Wolick
Director

2311 Egg Harbor Road
Lindenwold, NJ 08021
Phone 856.566.2980
Fax 856.566.2988
highway@camdencounty.com



Figure 8 – Workers began removal of approach sidewalks and curbs

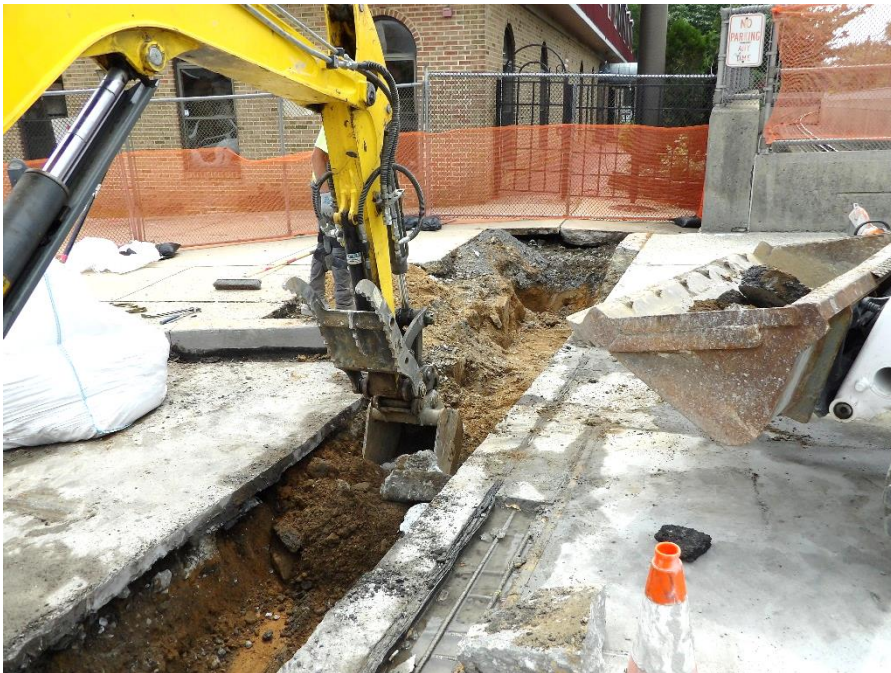


Figure 9 – Workers excavated behind the east abutment for header removal

Department of Public Works
Charles J. DePalma Complex

Almar Dyer
Commissioner, Liaison

John Wolick
Director

2311 Egg Harbor Road
Lindenwold, NJ 08021
Phone 856.566.2980
Fax 856.566.2988

highway@camdencounty.com



Figure 10 – Workers excavated behind the west abutment for header removal



Figure 11 – Workers continue to remove the east abutment header, work is in progress

Construction Activity: Stage 2 Construction

The following construction activities took place during the time noted above.

Traffic Control:

1. Variable Message Signs along Kings Highway are in place and operational.
2. Traffic Control and detour signs are in place and in good condition. No issues.
3. Traffic is moving safely through the lane shift and the detour for Washington Avenue along Kings Highway.

Bridge Rehabilitation Work:

1. Loftus Construction continued with the removal of deteriorated deck concrete removal for the Type B bridge deck repairs in Stage 2.
2. The removal and replacement of the deteriorated deck concrete was completed, Stage 2, shoulder area and travel lane.
3. Workers removed the existing approach sidewalks and curbs at the southeast corner of the bridge.
4. They saw cut across the east asphalt approach roadway and excavated behind the Stage 2 abutment header and began demolition of the existing header for replacement.

Contractor's Two Week Look Ahead:

1. Complete excavation behind the west abutment header, continue and complete removal of the existing east and west abutment headers.
2. Install new header reinforcing, fabricate, and install concrete formwork for the new headers.
3. Strip header forms, pour flowable concrete backfill (fill any voided areas beneath the approach roadways).
4. Backfill and grade the approach sidewalk areas and begin formwork for the new sidewalk and curbs.
5. Saw cut and remove the deck end concrete (1' wide x 5" deep) to create the PPC header joint.

NOTICE: After Stage 2 reconstruction is complete (projected to be the week of 7-4, subject to change), Kings Highway will be temporarily closed (projected to be Friday,7-8) in the vicinity of the PATCO overpass. A well-marked detour will be in place prior to the closure to direct traffic around the bridge/roadway closure. The closure with the detour is scheduled to be in place for a three-to-four-week timeframe to allow for construction of the final phase of the reconstruction project. All businesses will remain open during the closure and can be accessed from either side of the detour.

Department of Public Works
Charles J. DePalma Complex

Almar Dyer
Commissioner, Liaison

John Wolick
Director

2311 Egg Harbor Road
Lindenwold, NJ 08021
Phone 856.566.2980
Fax 856.566.2988
highway@camdencounty.com

Contract Information:

Notice to Proceed Date: April 18,2022

Project Completion: October 15,2022

Project Substantial Completion: September 15,2022

Project start Date: April 18, 2022

Bid opening Date: February 8,2022

Initial Award: March 7,2022

Contract Complete Percentage: Approximately 45%

Prepared By:

Mark S. Steffens
Resident Engineer/Construction Inspector

Department of Public Works

Almar Dyer
Commissioner, Liaison

John Wolick
Director

camden county

Making It Better. Together.



An Employee Owned Company

Charles J. DePalma Complex
2311 Egg Harbor Road
Lindenwold, NJ 08021
Phone 856.566.2980
Fax 856.566.2988
highway@camdencounty.co
Camden County .com

**Rehabilitation of Kings Highway Bridge (NJ Route 41) Over PATCO Speedline
Borough of Haddonfield, Camden County, New Jersey**

**Weekly Progress Report No. 10
6-20-2022 through 6-24-2022**



Figure 1 – Workers continued to excavate behind the abutments for header demolition and removal

Department of Public Works
Charles J. DePalma
Complex

Almar Dyer
Commissioner, Liaison

John Wolick
Director

2311 Egg Harbor Road
Lindenwold, NJ 08021
Phone 856.566.2980
Fax 856.566.2988
highway@camdencounty.com



Figure 2 – Excavations were completed, and header demolition began



Figure 3 – Workers completed removal of the headers and deck concrete for the PPC joint

Department of Public Works
Charles J. DePalma
Complex

Almar Dyer
Commissioner, Liaison

John Wolick
Director

2311 Egg Harbor Road
Lindenwold, NJ 08021
Phone 856.566.2980
Fax 856.566.2988
highway@camdencounty.com



Figure 4 – New header reinforcing was installed and formwork install began



Figure 5 – Workers continued to install formwork for the new headers

Department of Public Works
Charles J. DePalma
Complex

Almar Dyer
Commissioner, Liaison

John Wolick
Director

2311 Egg Harbor Road
Lindenwold, NJ 08021
Phone 856.566.2980
Fax 856.566.2988
highway@camdencounty.com



Figure 6 – Workers moved to the west header and began forming

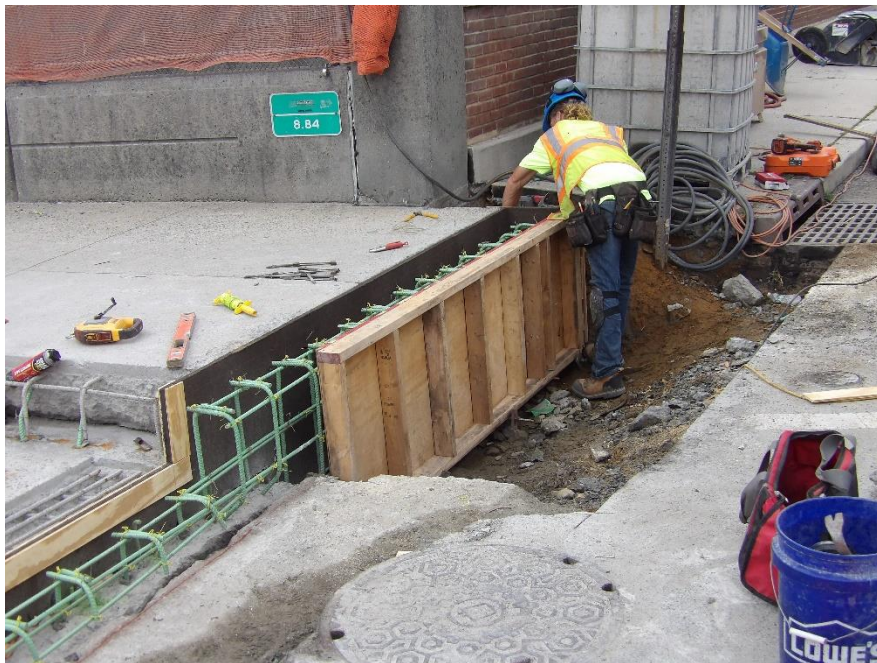


Figure 7 – West header formwork installation continued

Department of Public Works
Charles J. DePalma
Complex

Almar Dyer
Commissioner, Liaison

John Wolick
Director

2311 Egg Harbor Road
Lindenwold, NJ 08021
Phone 856.566.2980
Fax 856.566.2988
highway@camdencounty.com



Figure 8 – Workers completed the west header formwork



Figure 9 – Workers formed the curb repair at the southwest bridge corner

Department of Public Works
Charles J. DePalma
Complex

Almar Dyer
Commissioner, Liaison

John Wolick
Director

2311 Egg Harbor Road
Lindenwold, NJ 08021
Phone 856.566.2980
Fax 856.566.2988
highway@camdencounty.com

Construction Activity: Stage 2 Construction

The following construction activities took place during the time noted above.

Traffic Control:

1. Variable Message Signs along Kings Highway are in place and operational. The message has been changed to advise drivers of the upcoming Kings Highway road closure in the vicinity of the bridge over PATCO.
2. Traffic Control and detour signs are in place and in good condition. No issues.
3. Traffic is moving safely through the lane shift and the detour for Washington Avenue along Kings Highway.

Bridge Rehabilitation Work:

1. Workers completed removal the existing approach sidewalks and curbs on the south corners of the bridge.
2. They completed excavating behind both Stage 2 abutment headers and completed demolition of the existing headers for replacement.
3. Completed removal of the 5" x 1' east and west deck end top of deck concrete to create the PPC header joint.
4. Workers cleaned the remaining header concrete to remain, drilled in and installed the new reinforcing and completed the formwork for the new headers, both abutments in Stage 2.

Contractor's Two Week Look Ahead:

1. Beginning Monday, 6-27, pour the new header concrete.
2. Strip header forms, pour flowable concrete backfill behind both abutments, filling any voided areas beneath the approach roadways.
3. Backfill and grade the approach sidewalk areas and begin formwork for the new sidewalk and curbs.
4. Set up the Kings Highway road closure.
5. Begin the Stage 3 phase of the reconstruction.

NOTICE: After Stage 2 reconstruction is complete (projected to be the week of 7-4, subject to change), Kings Highway will be temporarily closed (projected to be Friday,7-8) in the vicinity of the PATCO overpass. A well-marked detour will be in place prior to the closure to direct traffic around the bridge/roadway closure. The closure with the detour is scheduled to be in place for a three-to-four-week timeframe to allow for construction of the final phase of the reconstruction project. All businesses will remain open during the closure and can be accessed from either side of the detour.

Department of Public Works
Charles J. DePalma
Complex

Almar Dyer
Commissioner, Liaison

John Wolick
Director

2311 Egg Harbor Road
Lindenwold, NJ 08021
Phone 856.566.2980
Fax 856.566.2988
highway@camdencounty.com

Contract Information:

Notice to Proceed Date: April 18,2022

Project Completion: October 15,2022

Project Substantial Completion: September 15,2022

Project start Date: April 18, 2022

Bid opening Date: February 8,2022

Initial Award: March 7,2022

Contract Complete Percentage: Approximately 55%

Prepared By:

Mark S. Steffens
Resident Engineer/Construction Inspector

**Rehabilitation of Kings Highway Bridge (NJ Route 41) Over PATCO Speedline
Borough of Haddonfield, Camden County, New Jersey**

**Weekly Progress Report No. 11
6-27-2022 through 6-30-2022**



Figure 1 – Workers completed excavations and formed for the new headers at each abutment

Department of Public Works
Charles J. DePalma
Complex

Almar Dyer
Commissioner, Liaison

John Wolick
Director

2311 Egg Harbor Road
Lindenwold, NJ 08021
Phone 856.566.2980
Fax 856.566.2988
highway@camdencounty.com



Figure 2 – New headers were poured and finished



Figure 3 – Workers stripped the header forms

Department of Public Works
Charles J. DePalma
Complex

Almar Dyer
Commissioner, Liaison

John Wolick
Director

2311 Egg Harbor Road
Lindenwold, NJ 08021
Phone 856.566.2980
Fax 856.566.2988
highway@camdencounty.com



Figure 4 – Both abutment headers were completed in Stage 2



Figure 5 – Workers installed formwork for the new approach curbs

Department of Public Works
Charles J. DePalma
Complex

Almar Dyer
Commissioner, Liaison

John Wolick
Director

2311 Egg Harbor Road
Lindenwold, NJ 08021
Phone 856.566.2980
Fax 856.566.2988

highway@camdencounty.com



Figure 6 – New approach curb concrete was poured and finished



Figure 7 – New curb formwork was stripped

Department of Public Works
Charles J. DePalma
Complex

Almar Dyer
Commissioner, Liaison

John Wolick
Director

2311 Egg Harbor Road
Lindenwold, NJ 08021
Phone 856.566.2980
Fax 856.566.2988
highway@camdencounty.com



Figure 8 – Excavations behind the abutments were filled with flowable concrete fill



Figure 9 – Flow fill backfilling was completed, work will resume Tuesday, July 5th

Department of Public Works
Charles J. DePalma
Complex

Almar Dyer
Commissioner, Liaison

John Wolick
Director

2311 Egg Harbor Road
Lindenwold, NJ 08021
Phone 856.566.2980
Fax 856.566.2988
highway@camdencounty.com

Construction Activity: Stage 2 Construction

The following construction activities took place during the time noted above.

Traffic Control:

1. Variable Message Signs along Kings Highway are in place and operational. The message has been changed to advise drivers of the upcoming Kings Highway road closure in the vicinity of the bridge over PATCO to begin on Friday, July 8th.
2. Traffic Control and detour signs are in place and in good condition. No issues.
3. Traffic is moving safely through the lane shift and the detour for Washington Avenue along Kings Highway.

Bridge Rehabilitation Work:

1. Workers completed excavating behind both Stage 2 abutment headers and completed demolition of the existing headers. Reconstruction of the new headers was completed this week.
2. Workers completed removal and reconstruction the existing approach curbs on the south corners of the bridge. Sidewalk reconstruction to begin Tuesday, July 5th.
3. After stripping the new header formwork, the subbase material behind the abutments was leveled, graded, compacted and the excavations were backfilled with a lightweight flowable concrete fill. This will mitigate any future settlements of the approach roadways.
4. Preparations for the closure of the roadway to begin the final phase of the reconstruction have begun. Workers began consolidating materials and equipment for relocation to the work area.

Contractor's Two Week Look Ahead:

1. Beginning Tuesday, 7-5, workers are scheduled to backfill and grade the south side approach sidewalk areas, complete the formwork, and pour concrete for the new sidewalks at the east and west approaches on the south side, Stage 2.
2. Prep the deck end PPC header joints, install new reinforcing, and mix and pour the PPC material.
3. Set up the Kings Highway road closure. Move materials and equipment and re-open Washington Avenue on the north side of Kings Highway (PATCO side).
4. Begin the Stage 3 phase of the reconstruction (sound the center of the deck for Type B deck repairs, excavate and remove deteriorated headers and reconstruct, and backfill with flow fill.

Department of Public Works
Charles J. DePalma
Complex

Almar Dyer
Commissioner, Liaison

John Wolick
Director

2311 Egg Harbor Road
Lindenwold, NJ 08021
Phone 856.566.2980
Fax 856.566.2988
highway@camdencounty.com

NOTICE: After Stage 2 reconstruction is complete, July 7th, Kings Highway will be closed on Friday, July 8th, in the vicinity of the PATCO overpass. A well-marked detour will be in place prior to the closure to direct traffic around the bridge/roadway closure. The closure with the detour is scheduled to be in place for a four-week timeframe to allow for completion of the final phase of the reconstruction project. All businesses will remain open during the closure and can be accessed from either side of the detour. The north side sidewalk of Kings Highway will remain open for pedestrian traffic, vehicular traffic will be prohibited. We ask pedestrians to avoid utilizing the south sidewalk and do not enter any closed off construction areas due to hazardous conditions. Thank you for your cooperation and we appreciate your patience during the construction.

Contract Information:

Notice to Proceed Date: April 18,2022

Project Completion: October 15,2022

Project Substantial Completion: September 15,2022

Project start Date: April 18, 2022

Bid opening Date: February 8,2022

Initial Award: March 7,2022

Contract Complete Percentage: Approximately 60%

Prepared By:

**Mark S. Steffens
Resident Engineer/Construction Inspector**

**Rehabilitation of Kings Highway Bridge (NJ Route 41) Over PATCO Speedline
Borough of Haddonfield, Camden County, New Jersey**

**Weekly Progress Report No. 15
7-25-2022 through 7-29-2022**



Figure 1 – Workers installed PPC deck forms

Department of Public Works
Charles J. DePalma
Complex

Almar Dyer
Commissioner, Liaison

John Wolick
Director

2311 Egg Harbor Road
Lindenwold, NJ 08021
Phone 856.566.2980
Fax 856.566.2988
highway@camdencounty.com



Figure 2 – PPC mixing station set up



Figure 3 – PPC primer was mixed and applied to the top of deck in each lane

Department of Public Works
Charles J. DePalma
Complex

Almar Dyer
Commissioner, Liaison

John Wolick
Director

2311 Egg Harbor Road
Lindenwold, NJ 08021
Phone 856.566.2980
Fax 856.566.2988
highway@camdencounty.com



Figure 4 – Workers began placement and finishing of the PPC overlay



Figure 5 – PPC overlay progressed, and forms stripped

Department of Public Works
Charles J. DePalma
Complex

Almar Dyer
Commissioner, Liaison

John Wolick
Director

2311 Egg Harbor Road
Lindenwold, NJ 08021
Phone 856.566.2980
Fax 856.566.2988
highway@camdencounty.com



Figure 6 – Workers applied primer and continued to place PPC



Figure 7 – Workers completed placing the overlay

Department of Public Works
Charles J. DePalma
Complex

Almar Dyer
Commissioner, Liaison

John Wolick
Director

2311 Egg Harbor Road
Lindenwold, NJ 08021
Phone 856.566.2980
Fax 856.566.2988
highway@camdencounty.com



Figure 8 – Workers began preparing the approach roadways for re-paving



Figure 9 – Approach roadway pavement is prepared for paving

Department of Public Works
Charles J. DePalma
Complex

Almar Dyer
Commissioner, Liaison

John Wolick
Director

2311 Egg Harbor Road
Lindenwold, NJ 08021
Phone 856.566.2980
Fax 856.566.2988
highway@camdencounty.com

Construction Activity: Stage 3 Construction

The following construction activities took place during the time noted above.

Traffic Control:

1. Variable Message Signs along Kings Highway are in place and operational. The message has been changed to advise drivers of the Kings Highway road closure in the vicinity of the bridge over PATCO that began on Monday, July 11th.
2. Traffic Control and detour signs are in place and in good condition. No issues.
3. Traffic is moving safely through the project detour.

Bridge Rehabilitation Work:

1. Stage 3 (final phase) of the reconstruction commenced on Monday, July 11th.
2. Workers finished lay-out of the lanes and shoulder areas then completed installation of the PPC forms and screed rails to prepare for the PPC overlay placement.
3. They performed a “dry run” of the screed across the deck to ensure proper thickness and grades of the new PPC overlay.
4. Workers mixed and placed the polyester polymer concrete over the entire deck. Installation took two working days to complete.
5. Workers saw-cut and removed the milled edges of the approach pavement at each end of the bridge to ensure a clean, vertical butt joint for the new approach pavement.
6. De-mobilization of equipment and materials began.

Contractor’s Two Week Look Ahead:

1. Beginning Monday, 8-1, repave the approach roadways.
2. Install deck joint compression seals at each abutment.
3. Re-stripe the bridge deck and approach roadways, re-stripe the existing pedestrian cross walk on Washington Avenue (north side), and paint the bridge and approach roadway curbs in the no-parking areas.
4. Perform any punch list work.
5. Complete de-mobilization of equipment and materials, remove temporary fencing.
6. Remove barricades, traffic channeling devices and detour signage.
7. Open Kings Highway in both directions.

Department of Public Works
Charles J. DePalma
Complex

Almar Dyer
Commissioner, Liaison

John Wolick
Director

2311 Egg Harbor Road
Lindenwold, NJ 08021
Phone 856.566.2980
Fax 856.566.2988
highway@camdencounty.com

NOTICE: Kings Highway is closed in the vicinity of the PATCO overpass. A well-marked detour is in place to direct traffic around the bridge/roadway closure. The closure with the detour is scheduled to be in place for a four-week timeframe to allow for completion of the final phase of the reconstruction project. All businesses will remain open during the closure and can be accessed from either side of the detour. The north side sidewalk of Kings Highway will remain open for pedestrian traffic, vehicular traffic will be prohibited. We ask pedestrians to avoid utilizing the south sidewalk and do not enter any closed off construction areas due to hazardous conditions. Thank you for your cooperation and we appreciate your patience during the construction.

Contract Information:

Notice to Proceed Date: April 18,2022

Project Completion: October 15,2022

Project Substantial Completion: September 15,2022

Project start Date: April 18, 2022

Bid opening Date: February 8,2022

Initial Award: March 7,2022

Contract Complete Percentage: Approximately 85%

Prepared By:

**Mark S. Steffens
Resident Engineer/Construction Inspector**

Department of Public Works

Almar Dyer
Commissioner, Liaison

John Wolick
Director

camden county

Making It Better. Together.



An Employee Owned Company

Charles J. DePalma Complex
2311 Egg Harbor Road
Lindenwold, NJ 08021
Phone 856.566.2980
Fax 856.566.2988
highway@camdencounty.co
Camden County .com

**Rehabilitation of Kings Highway Bridge (NJ Route 41) Over PATCO Speedline
Borough of Haddonfield, Camden County, New Jersey**

**Weekly Progress Report No. 13
7-11-2022 through 7-14-2022**



Figure 1 – Workers closed the Kings Highway bridge and set up the detour

Department of Public Works
Charles J. DePalma
Complex

Almar Dyer
Commissioner, Liaison

John Wolick
Director

2311 Egg Harbor Road
Lindenwold, NJ 08021
Phone 856.566.2980
Fax 856.566.2988
highway@camdencounty.com



Figure 2 – Stage 3 deck was marked out for deteriorated concrete removal



Figure 3 – Workers removed the deteriorated concrete from the top of the bridge deck

Department of Public Works
Charles J. DePalma
Complex

Almar Dyer
Commissioner, Liaison

John Wolick
Director

2311 Egg Harbor Road
Lindenwold, NJ 08021
Phone 856.566.2980
Fax 856.566.2988
highway@camdencounty.com



Figure 4 – The existing headers were excavated for removal



Figure 5 – Headers were chipped out and removed, Stage 3

Department of Public Works
Charles J. DePalma
Complex

Almar Dyer
Commissioner, Liaison

John Wolick
Director

2311 Egg Harbor Road
Lindenwold, NJ 08021
Phone 856.566.2980
Fax 856.566.2988
highway@camdencounty.com



Figure 6 – New header rebar and formwork was installed



Figure 7 – Workers completed the deteriorated concrete removal from the top of deck

Department of Public Works
Charles J. DePalma
Complex

Almar Dyer
Commissioner, Liaison

John Wolick
Director

2311 Egg Harbor Road
Lindenwold, NJ 08021
Phone 856.566.2980
Fax 856.566.2988
highway@camdencounty.com



Figure 8 – Workers poured and finished the deck patches



Figure 9 – Both abutment headers were poured and finished

Department of Public Works
Charles J. DePalma
Complex

Almar Dyer
Commissioner, Liaison

John Wolick
Director

2311 Egg Harbor Road
Lindenwold, NJ 08021
Phone 856.566.2980
Fax 856.566.2988
highway@camdencounty.com

Construction Activity: Stage 3 Construction

The following construction activities took place during the time noted above.

Traffic Control:

1. Variable Message Signs along Kings Highway are in place and operational. The message has been changed to advise drivers of the Kings Highway road closure in the vicinity of the bridge over PATCO that began on Monday, July 11th.
2. Traffic Control and detour signs are in place and in good condition. No issues.
3. Traffic is moving safely through the project detour.

Bridge Rehabilitation Work:

1. Stage 3 (final phase) of the reconstruction commenced on Monday, July 11th.
2. Workers sounded the top of the bridge deck and marked out deteriorated areas for removal, Stage 3.
3. The deteriorated areas were chipped and hammered out; debris was loaded into dumpsters for removal.
4. Workers cleaned and prepared the patches for concrete placement.
5. The east and west deck end header joints for the polyester polymer concrete (PPC) were saw-cut and removed (5" depth x 1' long).
6. Workers demolished the remaining existing headers at each abutment, Stage 3, cleaned existing concrete to remain, drilled in and epoxied the new reinforcing and installed new header formwork.
7. Workers mixed and sprayed the Sika Armatec-110 EpoCem bonding compound to all deck patch areas and both headers.
8. Concrete for the deck patches and headers was poured and finished. This completes the bridge deck and header repairs.

Contractor's Two Week Look Ahead:

1. Beginning Monday, 7-18, strip new header formwork.
2. Backfill both abutments with lightweight flowable fill.
3. Micro-mill (1") from the top of deck surface and mill (2") from the east and west approach roadways for re-paving.
4. Survey existing top of deck to ensure proper grades and drainage for the new PPC overlay.
5. Shot-blast, prepare, and resurface the top of deck with polyester polymer concrete (PPC).
6. Repave the approach roadways.

Department of Public Works
Charles J. DePalma
Complex

Almar Dyer
Commissioner, Liaison

John Wolick
Director

2311 Egg Harbor Road
Lindenwold, NJ 08021
Phone 856.566.2980
Fax 856.566.2988

highway@camdencounty.com

7. Re-stripe the bridge deck and approach roadways, re-stripe the existing pedestrian cross walks, and paint the bridge and approach roadway curbs in the no-parking areas.
8. Begin de-mobilization of equipment and materials.

NOTICE: Kings Highway is closed in the vicinity of the PATCO overpass. A well-marked detour is in place to direct traffic around the bridge/roadway closure. The closure with the detour is scheduled to be in place for a four-week timeframe to allow for completion of the final phase of the reconstruction project. All businesses will remain open during the closure and can be accessed from either side of the detour. The north side sidewalk of Kings Highway will remain open for pedestrian traffic, vehicular traffic will be prohibited. We ask pedestrians to avoid utilizing the south sidewalk and do not enter any closed off construction areas due to hazardous conditions. Thank you for your cooperation and we appreciate your patience during the construction.

Contract Information:

Notice to Proceed Date: April 18,2022

Project Completion: October 15,2022

Project Substantial Completion: September 15,2022

Project start Date: April 18, 2022

Bid opening Date: February 8,2022

Initial Award: March 7,2022

Contract Complete Percentage: Approximately 70%

Prepared By:

**Mark S. Steffens
Resident Engineer/Construction Inspector**

Department of Public Works

Almar Dyer
Commissioner, Liaison

John Wolick
Director

camden county

Making It Better. Together.



An Employee Owned Company

Charles J. DePalma Complex
2311 Egg Harbor Road
Lindenwold, NJ 08021
Phone 856.566.2980
Fax 856.566.2988
highway@camdencounty.co
Camden County .com

**Rehabilitation of Kings Highway Bridge (NJ Route 41) Over PATCO Speedline
Borough of Haddonfield, Camden County, New Jersey**

**Weekly Progress Report No. 14
7-18-2022 through 7-22-2022**



Figure 1 – Workers poured and stripped the Stage 3 headers

Department of Public Works
Charles J. DePalma Complex

Almar Dyer
Commissioner, Liaison

John Wolick
Director

2311 Egg Harbor Road
Lindenwold, NJ 08021
Phone 856.566.2980
Fax 856.566.2988
highway@camdencounty.com



Figure 2 – Both abutments were backfilled with lightweight flowable fill



Figure 3 – Workers poured and finished the PPC header joints at each deck end

Department of Public Works
Charles J. DePalma Complex

Almar Dyer
Commissioner, Liaison

John Wolick
Director

2311 Egg Harbor Road
Lindenwold, NJ 08021
Phone 856.566.2980
Fax 856.566.2988
highway@camdencounty.com



Figure 4 – The deck and approach roadways were milled for repaving



Figure 5 – After milling, the deck was shot-blasted to prep the surface for the PPC overlay

Department of Public Works
Charles J. DePalma Complex

Almar Dyer
Commissioner, Liaison

John Wolick
Director

2311 Egg Harbor Road
Lindenwold, NJ 08021
Phone 856.566.2980
Fax 856.566.2988
highway@camdencounty.com



Figure 6 – Chipping around approach utility covers that were inaccessible to the milling machine



Figure 7 – Workers checking grades between the deck to approach transitions

Department of Public Works
Charles J. DePalma Complex

Almar Dyer
Commissioner, Liaison

John Wolick
Director

2311 Egg Harbor Road
Lindenwold, NJ 08021
Phone 856.566.2980
Fax 856.566.2988
highway@camdencounty.com



Figure 8 – Workers cleaned the deck prior to form and rail installation



Figure 9 – Workers began lane and shoulder layout and began installing forms

Construction Activity: Stage 3 Construction

The following construction activities took place during the time noted above.

Traffic Control:

1. Variable Message Signs along Kings Highway are in place and operational. The message has been changed to advise drivers of the Kings Highway road closure in the vicinity of the bridge over PATCO that began on Monday, July 11th.
2. Traffic Control and detour signs are in place and in good condition. No issues.
3. Traffic is moving safely through the project detour.

Bridge Rehabilitation Work:

1. Stage 3 (final phase) of the reconstruction commenced on Monday, July 11th.
2. Workers stripped the new header formwork, Stage 3.
3. Both abutments were backfilled with lightweight flowable fill.
4. Workers Micro-milled (1") from the top of the deck surface and milled (2") from the east and west approach roadways for re-paving.
5. After milling, the contractor surveyed the existing top of deck to ensure proper grades and drainage for the new polyester polymer concrete (PPC) overlay.
6. Workers cleaned the entire deck and sand blasted areas that were inaccessible to the shot blast machine.
7. Workers then began lay-out of the lanes and shoulder areas that will be formed with screed rails installed to ensure proper grades and thickness for the new PPC overlay.

Contractor's Two Week Look Ahead:

1. Beginning Monday, 7-25, forms and screed rails to be set on the deck prior to the PPC overlay placement.
2. A "dry run" of the screed will be performed across the deck to ensure proper thickness and grades of the new PPC overlay.
3. Workers will mix and place the PPC.
4. Repave the approach roadways.
5. Re-stripe the bridge deck and approach roadways, re-stripe the existing pedestrian cross walks, and paint the bridge and approach roadway curbs in the no-parking areas.
6. Begin de-mobilization of equipment and materials.

Department of Public Works
Charles J. DePalma Complex

Almar Dyer
Commissioner, Liaison

John Wolick
Director

2311 Egg Harbor Road
Lindenwold, NJ 08021
Phone 856.566.2980
Fax 856.566.2988
highway@camdencounty.com

NOTICE: Kings Highway is closed in the vicinity of the PATCO overpass. A well-marked detour is in place to direct traffic around the bridge/roadway closure. The closure with the detour is scheduled to be in place for a four-week timeframe to allow for completion of the final phase of the reconstruction project. All businesses will remain open during the closure and can be accessed from either side of the detour. The north side sidewalk of Kings Highway will remain open for pedestrian traffic, vehicular traffic will be prohibited. We ask pedestrians to avoid utilizing the south sidewalk and do not enter any closed off construction areas due to hazardous conditions. Thank you for your cooperation and we appreciate your patience during the construction.

Contract Information:

Notice to Proceed Date: April 18,2022

Project Completion: October 15,2022

Project Substantial Completion: September 15,2022

Project start Date: April 18, 2022

Bid opening Date: February 8,2022

Initial Award: March 7,2022

Contract Complete Percentage: Approximately 75%

Prepared By:

**Mark S. Steffens
Resident Engineer/Construction Inspector**

Department of Public Works

Almar Dyer
Commissioner Liaison



Department of Public Works
Charles J. DePalma Complex
2311 Egg Harbor Road
Lindenwold, NJ 08021
phone 856.566.2980
fax 856.566.2988
highway@camdencounty.com
CamdenCounty.com

MP 9.51 – Kings Highway over PATCO Rehabilitation Project (NJDOT #0459164)

Owner: Camden County Public works
Contractor: Loftus Construction
CMCI : JMT



BEFORE: – General view of deck Patches typical throughout.



AFTER: General view of deck PPC Overlay



BEFORE: Exposed deck reinforcement within deteriorated patch in the southbound lane, looking east.



AFTER: Deck Concrete Base Repair during Construction



BEFORE: Large area of uneven asphalt patched spalls, cracked and broken patches with exposed reinforcement in southbound lane, looking southeast.



AFTER: Full depth Concrete repair done



BEFORE: Crushed and torn compression seal at north deck joint in southbound lane, looking east. Deck header is spalled with exposed reinforcement.



Deck Header Repair during construction



BEFORE: Compression seal at south deck joint torn full-length, looking east.
Deck header is spalled and cracked.



AFTER: Deck Header Repair during construction



BEFORE: Settlement of the approach sidewalk at the northeast corner, looking south.
Approach curb settled.



AFTER: Handicap Ramp and Curb during construction

Department of Public Works

Almar Dyer
Commissioner Liaison



Making It Better, Together.

Department of Public Works
Charles J. DePalma Complex
2311 Egg Harbor Road
Lindenwold, NJ 08021
phone 856.566.2980
fax 856.566.2988
highway@camdencounty.com
CamdenCounty.com



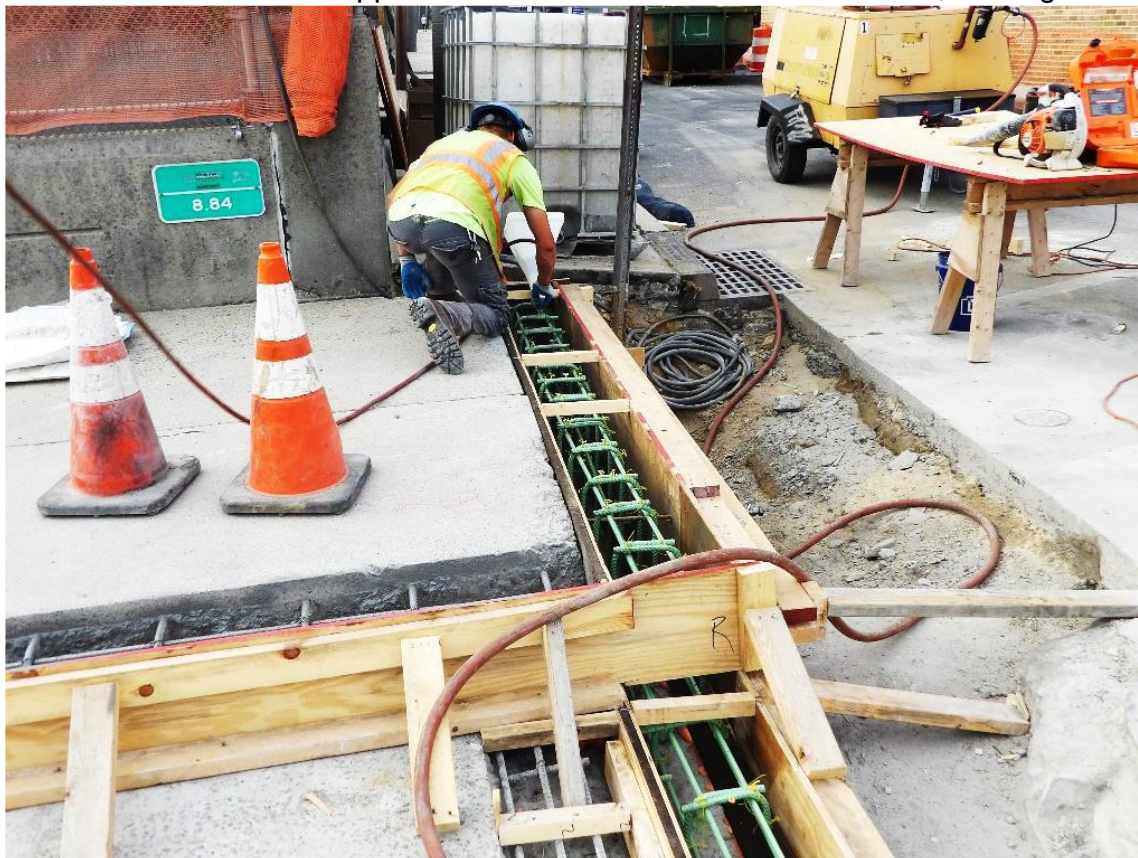
BEFORE: Handicap Ramp northeast corner



AFTER: Handicap Ramp improved



BEFORE: Settlement of the approach sidewalk at the southeast corner, looking northeast.



AFTER: Southeast corner curb during Construction



BEFORE: Southeast Corner Condition



AFTER: Southeast corner after construction



BEFORE: North Approach



AFTER: Approaches after pave

Department of Public Works

Almar Dyer
Commissioner Liaison



Making It Better, Together.

Department of Public Works
Charles J. DePalma Complex
2311 Egg Harbor Road
Lindenwold, NJ 08021
phone 856.566.2980
fax 856.566.2988
highway@camdencounty.com
CamdenCounty.com



BEFORE– North Approach, looking south.



AFTER– North Approach, looking south

Prepared By: Vibhuti Bhimani, Principal engineer