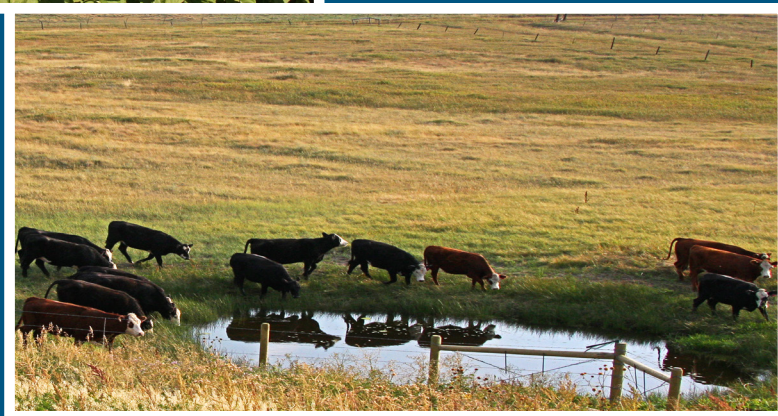
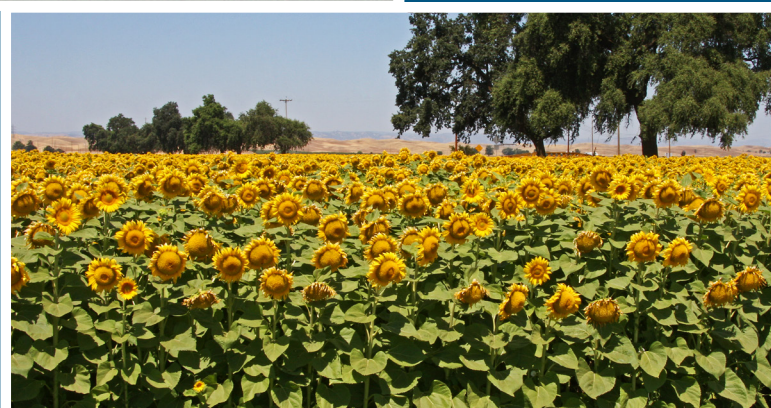


# California AGRICULTURAL EXPORTS



CALIFORNIA DEPARTMENT OF  
FOOD & AGRICULTURE

2020-2021



# California Agricultural Exports

In 2020, California's agricultural exports totaled \$20.8 billion in value, representing a decrease of 2.8 percent compared to the previous year. As indicated in the table below, California's agricultural exports have grown substantially over the past 10 years, despite slight contractions in 2015, 2016 and 2020.

California's top valued agricultural export commodity continues to be almonds, with a value of more than \$4.6 billion in foreign sales in 2020. This figure represents a decrease of 5 percent from the previous year. Dairy and dairy products ranked number two in export value at just over \$2 billion. Pistachios and walnuts came in third and fourth, respectively, for export values in 2020, with pistachio exports valued at \$1.7 billion and walnut exports valued at \$1.2 billion.

The principal 57 export commodities accounted for \$17.6 billion in export value in 2020, or 85 percent of the total value of California's agricultural exports, while the remaining 15 percent of exports were associated with "Other Products and Mixtures". Of the top 57 commodities exported, 17 showed an increase in export value of 5 percent or more, compared to the previous year, while 18 experienced a decrease in export value of 5 percent or more.

California's share of total U.S. agricultural exports for 2020 was 14.3 percent, which is down slightly compared to the share reported last year. California's top 10 export destinations for 2020 – the European Union, Canada, China/Hong Kong, Japan, South Korea, Mexico, India, United Arab Emirates, Taiwan, and Philippines – accounted for 70.5 percent of the 2020 export value. The Philippines showed the largest year over year growth in total export value with a 15 percent increase, compared to the previous year, and replaced Turkey as one of the top 10 destinations.

## Methodology

Data to compute agricultural exports are derived from official government sources, published industry sources and unpublished information from the government and the industry. Export quantities and values of the whole U.S. and California port districts are from the Department of Commerce (DOC) trade data posted on the United States International Trade Commission (USITC) online database (<http://dataweb.usitc.gov/>). Canadian import (value) data are from Strategis Canada's online database (<http://strategis.ic.gc.ca/engdoc/main.html>). If the California export price is not available for a particular product, the U.S. average export price for that commodity is used in order to provide a dollar value for exports.

Production quantities and values are from various National Agricultural Statistics Service (NASS), Economic Research Service (ERS), and Agricultural Marketing Service (AMS) publications. A share of the raw data provided in these USDA service publications are released as a preliminary report early in the calendar year followed by a more accurate final report released at a later date. For accuracy, The University of California Agricultural Issues Center (AIC) export estimates use data from final USDA reports.

AIC exports estimates use different methods from other sources, such as ERS. The ERS estimates are based on a state's national share of production of the exported commodity. The ERS method assumes that, for any particular commodity, a state's share of U.S. production equals that state's share of U.S. exports. Other sources use geographic port data, without direct links to where the product originated. The AIC export figures correspond to commodities that have been produced on farms and ranches within California. Products originated in another state and exported via California ports are not included in these statistics.



In most cases, AIC reports exports at the individual commodity level. For instance, exports of a given fruit in fresh, canned, and dried forms are summed and listed under the name of the fruit, although the method for fresh fruit exports may differ from the method used for canned and dried fruit. The ratio of quantity exported to quantity produced is given on a farm weight basis. That means, for example, that wine is converted back into fresh grapes. Standard conversion factors published by the USDA are applied.

### California Agricultural Export Values, 2010-2020

Year	Export Value
	<i>\$1 Billion</i>
2020	\$20.77
2019	\$21.36
2018	\$20.70
2017	\$20.78
2016	\$19.98
2015	\$20.81
2014	\$21.55
2013	\$21.55
2012	\$18.77
2011	\$17.23
2010	\$14.75



## California Agricultural Products Export Values and Rankings, 2018 2020

2020 Rank	Product	2018	2019	2020	Change in Value 2019 to 2020 (In Percent) <sup>1</sup>
		\$1 Million			
1	Almonds	4,531	4,901	4,659	-4.9
2	Dairy and Products <sup>2</sup>	1,618	1,805	2,037	12.8
3	Pistachios <sup>3,4</sup>	1,737	2,009	1,668	-17.0
4	Walnuts	1,280	1,250	1,246	-0.3
5	Wine <sup>3,4</sup>	1,298	1,228	1,143	-7.0
6	Rice	629	765	832	8.7
7	Table Grapes	803	743	731	-1.7
8	Oranges and Products <sup>3,4</sup>	654	549	597	8.9
9	Tomatoes, Processed	599	623	618	-0.7
10	Beef and Products <sup>5</sup>	414	404	413	2.3
11	Strawberries	439	402	407	1.3
12	Hay <sup>3</sup>	334	338	346	2.4
13	Lettuce	297	292	285	-2.3
14	Cotton	449	437	269	-38.5
15	Raisins	283	257	226	-12.1
16	Lemons <sup>3</sup>	299	203	185	-8.9
17	Raspberries and Blackberries <sup>3,6</sup>	135	142	141	-0.7
18	Prunes	142	126	122	-2.9
19	Peaches and Nectarines	124	119	120	1.0
20	Flowers and Nursery	112	117	118	0.7
21	Cauliflower <sup>3</sup>	134	127	104	-17.8
22	Cherries <sup>3</sup>	71	83	103	23.6
23	Spinach	92	91	97	7.2
24	Carrots <sup>3,4</sup>	96	93	90	-2.8
25	Onions	71	84	87	2.8
26	Broccoli <sup>3</sup>	96	84	85	1.9
27	Celery	75	102	76	-25.6
28	Tangerines and Mandarins	51	66	71	7.4
29	Dates <sup>3,4</sup>	50	57	62	9.3
30	Seeds for Sowing	63	62	57	-7.9
31	Melons	68	54	53	-1.2
32	Sweet Potatoes	57	52	50	-2.7
33	Plums	58	49	48	-3.3
34	Blueberries	38	32	42	31.0
35	Avocados	49	20	40	98.2
36	Pears	42	42	35	-16.0
37	Tomatoes, Fresh	35	30	35	18.1
38	Grapefruit <sup>3,4</sup>	28	30	33	10.4
39	Bell and Chili Peppers	26	25	28	12.9
40	Garlic	28	26	27	2.1
41	Kiwi	19	25	26	1.3
42	Olives and Olive Oil	35	28	23	-17.7
43	Grape Juice	28	22	22	-0.2
44	Chickens	21	21	21	0.9
45	Cabbage	19	25	19	-21.3
46	Potatoes	29	23	17	-26.4
47	Apples <sup>3</sup>	22	14	17	21.3

## California Agricultural Products Export Values and Rankings, 2018 2020

2020 Rank	Product	2018	2019	2020	Change in Value 2019 to 2020 (In Percent) <sup>1</sup>
		\$1 Million			
48	Turkey	18	17	13	-20.6
49	Wheat	20	24	13	-44.3
50	Dry Beans	11	17	13	-26.6
51	Asparagus <sup>3</sup>	21	18	12	-33.7
52	Eggs	8	11	12	10.2
53	Apricots	11	13	11	-15.1
54	Cottonseed and Byproducts	12	9	11	24.0
55	Figs	16	12	10	-19.8
56	Mushrooms	4	4	6	38.9
57	Artichokes	3	3	5	43.4
	<b>Total Principal Commodities<sup>7</sup></b>	<b>17,702</b>	<b>18,208</b>	<b>17,640</b>	<b>-3.1</b>
	<b>Total Other Products and Mixtures<sup>8,9</sup></b>	<b>2,997</b>	<b>3,151</b>	<b>3,126</b>	<b>-0.8</b>
	<b>Total All Agricultural Exports<sup>10</sup></b>	<b>20,698</b>	<b>21,359</b>	<b>20,766</b>	<b>-2.8</b>

<sup>1</sup> Total export values for each year are rounded to the nearest million dollars. More precise values are used in the percent change calculations.

<sup>2</sup> Dairy and product export values for were updated for 2018 using improved estimation methods.

<sup>3</sup> Export values for 2019 were revised based on updated production data from the U.S. Department of Agriculture/National Agricultural Statistics Service.

<sup>4</sup> Export values for 2018 were revised based on updated production data from the U.S. Department of Agriculture/National Agricultural Statistics Service.

<sup>5</sup> Hides and skins are included in the heading "Beef and Products".

<sup>6</sup> "Raspberries and Blackberries" category also includes exports of mulberries and loganberries.

<sup>7</sup> "Total Principal Commodity" values for 2018 and 2019 were revised based on updates to USDA NASS production data.

<sup>8</sup> "Total Other Products and Mixtures" is composed of (a) highly processed products that are difficult to attribute to a specific commodity such as mixtures of fruits, nuts and vegetables and other processed foods; (b) categories for which the listed item does not provide data on individual commodities and (c) animal and plant products marketed in such small quantities that they are not included in the top 57 leading commodities.

<sup>9</sup> "Total Other Products and Mixtures" values for 2018 and 2019 were revised based on updates to USDA NASS production data.

<sup>10</sup> "Total All Agricultural Exports" values for 2018 and 2019 were revised based on updates to USDA NASS production data.

Source: University of California, Department of Agricultural and Resource Economics





## California Share of U.S. Agricultural Exports by Category and Commodity, 2019 and 2020

Commodity	2019		2020		Change in California Share of U.S. Exports 2019 to 2020
	Total U.S. Export Value	California Share of U.S. Exports	Total U.S. Export Value	California Share of U.S. Exports	
	<i>\$1 Million</i>	<i>In Percent</i>	<i>\$1 Million</i>	<i>In Percent</i>	<i>Percent Change</i>
<b>Animal Products</b>	<b>19,194</b>	<b>11.8</b>	<b>19,170</b>	<b>13.0</b>	<b>10.7</b>
Dairy and Products	6,019	30.0	6,559	31.1	3.5
Beef and Products <sup>1</sup>	8,721	4.6	8,130	5.1	9.7
Turkey	492	3.4	422	3.2	-7.3
Eggs	464	2.3	458	2.6	11.8
Chicken	3,498	0.6	3,602	0.6	-2.0
<b>Field Crops</b>	<b>20,561</b>	<b>12.8</b>	<b>17,661</b>	<b>12.6</b>	<b>-1.2</b>
Cotton	6,141	7.1	5,951	4.5	-36.5
Cottonseed and Byproducts	145	6.2	139	7.7	23.5
Dry Beans	169	10.1	184	6.8	-32.6
Hay	1,543	22.0	1,586	21.8	-0.6
Potatoes	254	9.2	243	7.1	-23.0
Rice	1,883	40.7	1,901	43.8	7.6
Seeds for Sowing	3,369	9.9	543	10.4	5.7
Sweet Potatoes	188	27.6	188	26.7	-3.0
Tomatoes, Processed	623	100.0	618	100.0	0.0
Wheat	6,246	0.4	6,308	0.2	-44.8
<b>Fruits</b>	<b>7,056</b>	<b>62.0</b>	<b>7,064</b>	<b>60.9</b>	<b>-1.9</b>
Apples	1,016	1.8	903	1.9	2.0
Apricots	15	79.7	13	84.2	5.7
Avocados	27	74.7	46	88.6	18.6
Blueberries	276	11.7	286	14.8	26.5
Cherries	522	16.2	521	19.8	21.9
Dates	73	100.0	62	100.0	0.0
Prunes	126	100.0	122	100.0	0.0
Figs	12	100.0	10	100.0	0.0
Grape Juice	66	33.8	68	32.9	-2.6
Grapefruit	97	27.8	94	35.5	27.7
Kiwi	25	100.0	26	100.0	0.0
Lemons	226	91.0	200	92.7	1.8
Melons	136	39.6	147	36.1	-9.0
Olives and Olive Oil <sup>2</sup>	28	100.0	23	100.0	0.0
Oranges and Products	857	64.0	1,155	51.7	-0.2
Peaches and Nectarines	169	70.1	160	74.8	6.7
Pears	200	21.1	169	21.0	-0.3
Plums	50	98.9	49	98.6	-0.4
Raisins	257	100.0	226	100.0	0.0
Raspberries and Blackberries <sup>3</sup>	181	89.8	180	78.2	-12.9
Strawberries	445	90.4	457	89.0	-1.5
Table Grapes	743	100.0	731	100.0	0.0
Tangerines and Mandarins	69	95.2	74	95.4	0.2
Wine	1,369	91.5	1,285	88.9	-2.8

## California Share of U.S. Agricultural Exports by Category and Commodity, 2019 and 2020

Commodity	2019		2020		Change in California Share of U.S. Exports 2019 to 2020
	Total U.S. Export Value	California Share of U.S. Exports	Total U.S. Export Value	California Share of U.S. Exports	
	\$1 Million	In Percent	\$1 Million	In Percent	Percent Change
<b>Tree Nuts</b>	<b>8,162</b>	<b>100.0</b>	<b>7,573</b>	<b>100.0</b>	<b>0.0</b>
Almonds	4,901	100.0	4,659	100.0	0.0
Walnuts	1,250	100.0	1,246	100.0	0.0
Pistachios	2,010	100.0	1,668	100.0	0.0
<b>Vegetables</b>	<b>1,782</b>	<b>56.3</b>	<b>1,834</b>	<b>52.2</b>	<b>-7.4</b>
Artichokes	3	100.0	5	100.0	0.0
Asparagus	82	23.4	62	19.7	-15.7
Bell and Chili Peppers	81	30.5	83	33.5	10.0
Broccoli	95	90.1	96	89.4	-0.8
Cabbage	85	27.5	79	24.8	-9.9
Carrots	110	85.2	108	83.1	-2.5
Cauliflower	153	81.6	148	70.6	-13.5
Celery	116	88.1	82	92.6	5.2
Garlic	26	100.0	27	100.0	0.0
Lettuce	458	63.7	452	63.1	-1.0
Mushrooms	44	9.0	144	3.8	-57.8
Onions	281	30.0	291	29.7	-0.9
Spinach	135	66.9	141	68.8	2.8
Tomatoes, Fresh	112	26.6	116	30.3	14.0
<b>Flowers and Nursery</b>	<b>440</b>	<b>26.6</b>	<b>414</b>	<b>28.6</b>	<b>7.2</b>
<b>Total California Principal Commodities</b>	<b>57,195</b>	<b>32.4</b>	<b>53,717</b>	<b>32.9</b>	<b>-10.5</b>
<b>Total Other Products and Mixtures<sup>4</sup></b>	<b>79,455</b>	<b>4.0</b>	<b>91,662</b>	<b>3.4</b>	<b>11.5</b>
<b>Total U.S. Agricultural Exports<sup>5</sup></b>	<b>136,541</b>	<b>15.9</b>	<b>145,380</b>	<b>14.3</b>	<b>0.3</b>

<sup>1</sup> Hides and skins are included in the heading "Beef and Products".

<sup>2</sup> Product category "Olives and Olive Oil" is equal to the product category "Olives and Products" found in previous years' data tables.

<sup>3</sup> "Raspberries and Blackberries" category also includes exports of mulberries and loganberries.

<sup>4</sup> Total other products and mixtures is equal to total U.S. agricultural exports minus total California principal commodity exports.

<sup>5</sup> Total U.S. agricultural export values come from USDA. USDA defines agriculture to include: live animals, meat, and products of livestock, poultry, and Dairy and Products; hides and skins (but not leather products); animal fats and greases; food and feed grains and grain products; oilseeds and oilseed products; fruits, nuts, and vegetables and products of these; juices, wine, and malt beverages (not distilled spirits); essential oils; planting seeds; raw cotton, wool, and other fibers (not manufactured products of these); unmanufactured tobacco (not manufactured tobacco products); sugar and sugar products; coffee, cocoa, tea, and products of these; rubber and allied products; and stock for nurseries and greenhouses, spices, and crude or natural drugs. Fish, shellfish, and forestry products are not included in "agriculture".

Source: University of California, Department of Agricultural and Resource Economics



## Major Destinations for California Agricultural Exports, 2019 and 2020 <sup>1,2</sup>

Commodities <sup>1</sup> and Destinations	Percent of Total by Destination		Commodities <sup>1</sup> and Destinations	Percent of Total by Destination		Commodities <sup>1</sup> and Destinations	Percent of Total by Destination	
	2019	2020		2019	2020		2019	2020
<b>Almonds (1)</b>			<b>Oranges and Products (8)</b>			<b>Lemons (16)</b>		
European Union	37	33	South Korea	30	28	Japan	33	26
India	15	16	Canada	19	19	Canada	23	25
China/Hong Kong	8	14	China/Hong Kong	17	17	South Korea	12	13
Canada	6	6	Japan	15	13	European Union	9	10
Japan	6	5	Other destinations	19	22	China/Hong Kong	7	7
United Arab Emirates	6	<5				Australia	<5	5
Other destinations	24	23	<b>Tomatoes, Processed (9)</b>			Other destinations	16	14
			Canada	39	39			
<b>Dairy and Products (2)</b>			Mexico	12	14	<b>Raspberries and Blackberries (17) <sup>4</sup></b>		
Mexico	19	13	Japan	8	8	Canada	71	73
Philippines	10	12	European Union	5	7	Japan	6	5
China/Hong Kong	8	9	Other destinations	36	31	Saudi Arabia	5	5
South Korea	8	8				Other destinations	18	17
Japan	6	8	<b>Beef and Products (10) <sup>3</sup></b>					
Canada	8	7	Japan	33	24	<b>Dried Plums (18)</b>		
Indonesia	6	7	South Korea	34	22	European Union	31	28
Other destinations	35	36	China/Hong Kong	17	16	Japan	21	24
			Mexico	<5	11	Canada	9	10
<b>Pistachios (3)</b>			Canada	<5	9	Mexico	8	9
European Union	32	40	Taiwan	<5	7	China/Hong Kong	6	6
China/Hong Kong	39	32	Other destinations	7	10	South Korea	<5	5
Canada	5	7				Other destinations	25	19
Other destinations	24	22	<b>Strawberries (11)</b>					
			Canada	67	70	<b>Peaches and Nectarines (19)</b>		
<b>Walnuts (4)</b>			Mexico	10	9	Canada	53	64
European Union	38	35	Japan	7	8	Mexico	24	18
Japan	8	9	Other destinations	17	14	Taiwan	11	8
Turkey	11	8				Other destinations	11	11
United Arab Emirates	10	7	<b>Hay (12)</b>					
Canada	6	7	Japan	37	35	<b>Flowers and Nursery (20)</b>		
South Korea	6	7	China/Hong Kong	22	28	Canada	50	54
India	<5	6	South Korea	17	17	Mexico	18	19
Other destinations	22	22	Saudi Arabia	9	7	European Union	15	12
			United Arab Emirates	7	5	Other destinations	17	14
<b>Wine (5)</b>			Other destinations	8	8			
European Union	32	34	<b>Lettuce (13)</b>			<b>Cauliflower (21)</b>		
Canada	30	34	Canada	88	87	Canada	87	88
China/Hong Kong	11	7	Taiwan	5	5	Taiwan	7	<5
Japan	7	6	Mexico	<5	5	Other destinations	6	12
Other destinations	20	18	Other destinations	7	2			
						<b>Cherries (22)</b>		
<b>Rice (6)</b>			<b>Cotton (14)</b>			Canada	27	32
Japan	39	34	India	28	27	South Korea	19	23
South Korea	17	20	China/Hong Kong	25	25	China/Hong Kong	21	15
Jordan	10	9	Pakistan	8	10	Taiwan	10	9
Saudi Arabia	<5	6	Vietnam	12	7	Japan	6	7
Israel	<5	5	Bangladesh	<5	7	Vietnam	<5	5
Taiwan	5	<5	Turkey	6	5	Other destinations	17	9
European Union	5	<5	Other destinations	49	19			
Other destinations	24	26				<b>Spinach (23)</b>		
			<b>Raisins (15)</b>			Canada	83	83
<b>Table Grapes (7)</b>			Japan	24	25	Mexico	17	17
Canada	27	34	European Union	16	16	Other destinations	0	0
Mexico	14	16	Canada	12	14			
South Korea	5	7	China/Hong Kong	6	5	<b>Carrots (24)</b>		
Japan	6	6	Mexico	5	<5	Canada	88	87
Taiwan	6	6	Other destinations	37	39	Mexico	7	9
Vietnam	6	5				Other destinations	5	4
Australia	7	<5						
Philippines	5	<5						
Other destinations	23	27						



## Major Destinations for California Agricultural Exports, 2019 and 2020 <sup>1, 2</sup>

Commodities <sup>1</sup> and Destinations	Percent of Total by Destination		Commodities <sup>1</sup> and Destinations	Percent of Total by Destination		Commodities <sup>1</sup> and Destinations	Percent of Total by Destination	
	2019	2020		2019	2020		2019	2020
<b>Onions (25)</b>			<b>Avocado (35)</b>			<b>Cabbage (45)</b>		
Canada	48	47	South Korea	39	29	Canada	96	94
Mexico	22	23	Japan	10	24	Other destinations	4	6
European Union	6	6	Canada	39	12			
Japan	5	6	China/Hong Kong	<5	11	<b>Potatoes (46)</b>	<b>2019</b>	<b>2020</b>
Other destinations	19	19	Taiwan	10	7	Canada	45	39
			Singapore	<5	5	Mexico	19	23
<b>Broccoli (26)</b>	<b>2019</b>	<b>2020</b>	Other destinations	3	11	Taiwan	7	9
Canada	81	83				Japan	6	5
Japan	13	8	<b>Pears (36)</b>	<b>2019</b>	<b>2020</b>	Other destinations	23	24
Mexico	<5	5	Canada	65	73			
Other destinations	6	4	Mexico	23	15	<b>Dry Beans (50)</b>	<b>2019</b>	<b>2020</b>
			Other destinations	12	12	European Union	40	36
<b>Celery (27)</b>	<b>2019</b>	<b>2020</b>				Pakistan	16	16
Canada	87	83	<b>Tomatoes, Fresh (37)</b>	<b>2019</b>	<b>2020</b>	Canada	17	14
Other destinations	9	17	Canada	94	97	United Arab Emirates	<5	5
			Other destinations	6	3	Other destinations	27	29
<b>Tangerines and Mandarins (28)</b>	<b>2019</b>	<b>2020</b>						
Canada	54	47	<b>Grapefruit (38)</b>	<b>2019</b>	<b>2020</b>	<b>Asparagus (51)</b>	<b>2019</b>	<b>2020</b>
Japan	21	24	Japan	28	27	European Union	32	33
European Union	7	8	Canada	25	24	Japan	25	18
Australia	<5	5	European Union	24	23	Canada	12	17
Mexico	6	<5	South Korea	16	19	Australia	15	13
Other destinations	11	16	Other destinations	7	8	Mexico	<5	5
						Switzerland	5	<5
<b>Dates (29)</b>	<b>2019</b>	<b>2020</b>	<b>Bell and Chili Peppers (39)</b>	<b>2019</b>	<b>2020</b>	Other destinations	10	14
Mexico	24	32	Canada	95	95			
Canada	29	25	Other destinations	5	5	<b>Apricots (53)</b>	<b>2019</b>	<b>2020</b>
Australia	25	18				Canada	56	56
European Union	10	11	<b>Garlic (40)</b>	<b>2019</b>	<b>2020</b>	Mexico	13	11
Other destinations	12	14	Canada	38	30	Japan	8	8
			Mexico	13	16	Vietnam	<5	6
<b>Melons (31)</b>	<b>2019</b>	<b>2020</b>	Japan	11	11	Other destinations	23	19
Canada	82	86	European Union	5	8			
Mexico	8	<5	Australia	5	6	<b>Cottonseed and Byproducts (54)</b>	<b>2019</b>	<b>2020</b>
Other destinations	10	14	Indonesia	9	5	Mexico	34	31
			Other destinations	19	25	South Korea	20	24
<b>Sweet Potatoes (32)</b>	<b>2019</b>	<b>2020</b>				Japan	13	16
European Union	68	65	<b>Kiwi (41)</b>	<b>2019</b>	<b>2020</b>	Saudi Arabia	13	10
Canada	28	32	Japan	30	42	Canada	5	5
Other destinations	4	4	Mexico	48	36	China/Hong Kong	<5	5
			Canada	10	12	Other destinations	15	8
<b>Plums (33)</b>	<b>2019</b>	<b>2020</b>	Other destinations	13	10			
Canada	36	43				<b>Figs (55)</b>	<b>2019</b>	<b>2020</b>
China/Hong Kong	28	30	<b>Olives and Olive Oil (42)</b>	<b>2019</b>	<b>2020</b>	Canada	49	56
Taiwan	12	12	Canada	35	25	Mexico	9	16
Mexico	18	9	Mexico	16	14	China/Hong Kong	26	15
Other destinations	5	7	European Union	5	17	Japan	12	9
			Japan	7	8	Other destinations	4	5
<b>Blueberries (34)</b>	<b>2019</b>	<b>2020</b>	South Korea	<5	6			
Canada	65	61	Other destinations	37	31	<b>Artichokes (57)</b>	<b>2019</b>	<b>2020</b>
European Union	8	9				Canada	65	55
South Korea	6	8	<b>Grape Juice (43)</b>	<b>2019</b>	<b>2020</b>	Mexico	28	43
Japan	6	6	Canada	60	41	Other destinations	6	2
Other destinations	15	16	Japan	20	27			
			South Korea	<5	6			
			Taiwan	<5	5			
			Other destinations	12	21			

<sup>1</sup> This table shows destinations that receive shares of total exports greater than or equal to 5 percent of each commodity in either 2019 or 2020 for which reliable data are available.

The commodities are listed by rank order, shown in parentheses, that corresponds to the 2020 ranking in the table: "Agricultural Commodity Export Values and Rankings, 2018-2020".

<sup>2</sup> Accurate export destination data are only available for 50 of the top 57 commodities. The commodities for which export destinations are not included are "Apples", "Chickens", "Eggs", "Mushrooms", "Seeds for Sowing", "Turkey" and "Wheat".

<sup>3</sup> Hides and skins are included in the heading "Beef and Products".

<sup>4</sup> "Raspberries and Blackberries" category also includes exports of mulberries and loganberries.

Source: University of California, Department of Agricultural and Resource Economics

**Major California Agricultural Exports to the Top 15 Destinations, 2019 and 2020**

Commodities <sup>1</sup> and Destinations	Approximate Export Value \$1 Million <sup>1</sup>		Percent Change 2019 to 2020	Commodities <sup>1</sup> and Destinations	Approximate Export Value \$1 Million <sup>1</sup>		Percent Change 2019 to 2020
	2019	2020			2019	2020	
<b>1- European Union (EU-28)</b>	<b>3,658.4</b>	<b>3,498.2</b>	<b>-4.4</b>	<b>2- Canada</b>	<b>3,210.9</b>	<b>3,410.6</b>	<b>6.2</b>
Almonds	1,805.6	1,633.7	-9.5	Wine	370.9	440.5	18.8
Pistachios	649.1	662.1	2.0	Strawberries	268.2	283.3	5.6
Wine	405.1	441.2	8.9	Almonds	284.4	275.4	-3.2
Walnuts	470.4	434.5	-7.6	Table Grapes	203.9	268.3	31.6
Tomatoes, Processed	30.7	44.7	45.5	Lettuce	257.9	249.0	-3.5
Raisins	40.5	36.7	-9.4	Tomatoes, Processed	241.6	243.2	0.7
Dairy and Products	40.7	36.3	-10.9	Dairy and Products	136.4	138.1	1.2
Prunes	38.9	33.9	-12.9	Pistachios	103.1	117.8	14.3
Sweet Potatoes	35.3	32.6	-7.7	Oranges and Products	104.0	115.7	11.3
Rice	33.7	29.6	-12.2	Cauliflower	108.6	106.0	-2.4
Lemons	19.0	18.1	-4.5	Raspberries and Blackberries <sup>3</sup>	115.4	102.8	-10.9
Flowers and Nursery	17.5	14.4	-17.6	Walnuts	75.3	85.8	14.0
Dates	7.4	9.1	23.6	Spinach	75.2	80.2	6.7
Cotton	11.4	9.1	-20.8	Carrots	82.7	78.6	-4.9
Beef and Products <sup>2</sup>	1.0	8.3	702.0	Peaches and Nectarines	63.3	76.7	21.2
Grapefruit	6.5	7.6	16.9	Broccoli	70.1	71.1	1.5
Oranges and Products	3.2	6.5	106.1	Flowers and Nursery	59.2	63.7	7.6
Tangerines and Mandarins	4.3	6.0	38.3	Celery	89.0	62.9	-29.3
Onions	5.2	4.8	-8.1	Lemons	47.7	49.0	2.8
Dry Beans	6.9	4.6	-33.6	Melons	44.2	45.7	3.4
Asparagus	6.2	4.1	-34.3	Onions	40.3	41.0	1.8
Olives and Olive Oil	1.4	3.9	172.2	Beef and Products <sup>2</sup>	0.0	39.0	
Blueberries	2.5	3.9	53.1	Tangerines and Mandarins	35.8	33.3	-6.8
Strawberries	3.0	2.5	-16.0	Cherries	23.2	32.8	41.6
Garlic	1.3	2.0	63.2	Tomatoes, Fresh	28.0	32.4	15.7
Table Grapes	4.1	1.6	-60.7	Raisins	30.7	32.2	5.1
Raspberries and Blackberries <sup>3</sup>	2.2	1.2	-44.3	Bell and Chili Peppers	23.4	26.4	13.0
				Pears	27.2	26.3	-3.1
				Blueberries	20.9	26.0	24.4
				Dates	20.9	22.1	5.7
				Plums	17.9	20.6	15.3
				Cabbage	22.4	18.4	-17.7
				Sweet Potatoes	14.6	16.0	9.6
				Prunes	11.1	11.8	6.4
				Grape Juice	13.4	9.1	-32.4
				Grapefruit	6.8	8.1	18.8
				Garlic	10.1	8.0	-20.7
				Potatoes	10.6	6.7	-36.9
				Rice	6.6	6.1	-7.8
				Apricots	6.8	6.1	-11.6
				Olives and Olive Oil	10.1	6.0	-40.9
				Figs	6.1	5.6	-8.9
				Avocados	4.4	4.9	12.0
				Hay	5.6	4.4	-21.8
				Mushrooms	2.0	2.4	14.3

## Major California Agricultural Exports to the Top 15 Destinations, 2019 and 2020

Commodities <sup>1</sup> and Destinations	Approximate Export Value \$1 Million <sup>1</sup>		Percent Change 2019 to 2020	Commodities <sup>1</sup> and Destinations	Approximate Export Value \$1 Million <sup>1</sup>		Percent Change 2019 to 2020
	2019	2020			2019	2020	
<b>3- China/Hong Kong</b>	<b>1,931.0</b>	<b>1,979.2</b>	<b>2.5</b>	<b>5- South Korea</b>	<b>1,057.3</b>	<b>1,139.2</b>	<b>7.7</b>
Almonds	373.3	690.4	85.0	Almonds	180.2	182.3	1.2
Pistachios	776.6	529.4	-31.8	Oranges and Products	163.7	168.0	2.6
Dairy and Products	142.7	193.3	35.4	Dairy and Products	137.1	166.5	21.4
Oranges and Products	91.2	100.5	10.1	Rice	120.4	152.7	26.8
Hay	73.9	97.1	31.4	Beef and Products <sup>2</sup>	136.2	90.1	-33.8
Wine	138.3	85.0	-38.6	Walnuts	80.6	83.2	3.2
Cotton	107.6	66.9	-37.8	Hay	57.9	58.5	1.0
Beef and Products <sup>2</sup>	68.1	64.4	-5.5	Table Grapes	39.9	57.5	44.0
Table Grapes	29.1	30.9	6.0	Wine	22.7	47.8	110.7
Cherries	17.5	15.6	-11.4	Lemons	24.3	24.8	2.1
Walnuts	16.9	15.0	-11.6	Cherries	16.1	23.6	46.3
Plums	13.9	14.3	2.7	Tomatoes, Processed	19.7	18.9	-4.2
Lemons	13.5	12.8	-5.1	Avocados	7.8	11.8	50.9
Tomatoes, Processed	13.9	11.7	-15.9	Pistachios	9.0	10.4	15.8
Raisins	15.3	11.1	-27.1	Raisins	9.7	6.5	-32.6
Prunes	8.1	7.6	-5.9	Grapefruit	4.2	6.2	47.6
Rice	7.7	7.4	-2.9	Prunes	4.6	5.7	22.4
Avocados	0.5	4.3	751.9	Strawberries	5.7	4.1	-27.5
Strawberries	5.2	4.0	-23.0	Blueberries	1.9	3.2	68.7
Raspberries and Blackberries <sup>3</sup>	4.7	3.9	-18.3	Cottonseed	1.8	2.6	39.8
Celery	2.7	2.9	8.1				
Flowers and Nursery	1.7	2.0	16.8	<b>6- Mexico</b>	<b>1,018.5</b>	<b>1,018.4</b>	<b>0.0</b>
				Dairy and Products	338.1	265.3	-21.5
<b>4- Japan</b>	<b>1,594.7</b>	<b>1,546.3</b>	<b>-3.0</b>	Table Grapes	107.3	124.5	16.0
Rice	276.7	263.5	-4.8	Almonds	98.8	100.2	1.4
Almonds	275.8	238.6	-13.5	Tomatoes, Processed	77.1	88.1	14.4
Dairy and Products	115.4	153.9	33.4	Walnuts	44.1	46.2	4.7
Hay	125.2	122.6	-2.1	Beef and Products <sup>2</sup>	4.0	44.2	993.1
Walnuts	100.1	114.5	14.4	Strawberries	41.9	38.2	-8.8
Beef and Products <sup>2</sup>	133.7	98.0	-26.7	Pistachios	32.9	35.6	8.2
Wine	85.5	80.5	-5.8	Dates	17.3	27.9	61.5
Oranges and Products	81.2	80.1	-1.3	Rice	24.5	26.3	7.5
Raisins	62.6	56.8	-9.2	Flowers and Nursery	21.2	23.0	8.6
Table Grapes	47.8	49.2	2.9	Peaches and Nectarines	28.7	21.0	-26.9
Tomatoes, Processed	47.4	47.6	0.4	Onions	18.3	19.5	6.6
Lemons	68.5	46.2	-32.5	Oranges and Products	13.8	17.0	23.6
Strawberries	26.8	30.6	14.2	Spinach	15.3	16.8	9.9
Prunes	26.3	29.0	10.2	Wine	16.6	15.9	-4.6
Pistachios	20.2	25.4	25.7	Lettuce	10.1	13.0	27.8
Tangerines and Mandarins	14.1	16.9	19.5	Prunes	9.5	11.3	19.8
Kiwi	7.6	10.8	42.1	Raisins	13.0	9.4	-27.3
Avocados	2.5	9.5	284.2	Kiwi	12.1	9.2	-24.3
Grapefruit	7.5	8.9	17.7	Carrots	6.1	8.0	30.9
Cherries	5.5	7.0	28.7	Pears	9.9	5.3	-46.3
Raspberries and Blackberries <sup>3</sup>	9.8	6.8	-30.5	Garlic	3.4	4.3	25.1
Broccoli	11.6	6.8	-41.3	Plums	9.1	4.2	-54.4
Grape Juice	4.5	6.1	35.7	Potatoes	4.5	4.0	-12.4
Onions	4.5	5.1	12.8	Broccoli	1.3	3.9	209.1
Cauliflower	3.5	3.8	9.1	Cauliflower	2.2	3.4	55.5
Garlic	2.8	2.9	1.2	Cottonseed	3.1	3.3	7.7
Celery	3.8	2.8	-25.6	Olives and Olive Oil	4.5	3.2	-29.4
Blueberries	2.1	2.7	29.0	Tangerines and Mandarins	4.2	3.0	-28.8
Asparagus	4.9	2.2	-55.7	Lemons	3.8	2.9	-24.6
Lettuce	1.5	2.0	34.7	Raspberries and Blackberries <sup>3</sup>	2.7	2.6	-3.2
				Melons	4.2	2.1	-49.8

**Major California Agricultural Exports to the Top 15 Destinations, 2019 and 2020**

Commodities <sup>1</sup> and Destinations	Approximate Export Value \$1 Million <sup>1</sup>		Percent Change 2019 to 2020	Commodities <sup>1</sup> and Destinations	Approximate Export Value \$1 Million <sup>1</sup>		Percent Change 2019 to 2020
	2019	2020			2019	2020	
<b>7- India</b>	<b>969.2</b>	<b>999.2</b>	<b>3.1</b>	<b>10- Philippines</b>	<b>266.2</b>	<b>305.1</b>	<b>14.6</b>
Almonds	732.8	824.3	12.5	Dairy and Products	179.5	246.7	37.4
Cotton	124.2	72.4	-41.7	Table Grapes	33.7	21.1	-37.5
Walnuts	23.5	69.1	193.6	Wine	14.5	7.9	-45.4
Pistachios	63.1	19.3	-69.4	Raisins	9.4	6.1	-35.6
Dairy and Products	16.5	7.6	-54.2	Oranges and Products	4.2	3.8	-10.9
Tomatoes, Processed	3.6	3.2	-9.8	Tomatoes, Processed	8.9	3.5	-60.3
				Almonds	2.0	3.5	74.3
				Beef and Products <sup>2</sup>	4.6	2.9	-35.7
<b>8- United Arab Emirates</b>	<b>537.1</b>	<b>384.3</b>	<b>-28.4</b>				
Almonds	271.8	194.2	-28.5	<b>11- Vietnam</b>	<b>320.7</b>	<b>287.8</b>	<b>-10.3</b>
Walnuts	119.3	90.3	-24.3	Dairy and Products	54.7	66.2	21.0
Pistachios	42.6	20.2	-52.5	Almonds	69.1	65.6	-5.1
Hay	23.7	15.9	-33.1	Pistachios	34.7	49.3	42.2
Dairy and Products	27.0	14.5	-46.3	Table Grapes	42.1	37.4	-11.1
Tomatoes, Processed	16.5	12.9	-22.0	Cotton	51.0	19.8	-61.2
Rice	6.4	9.4	46.2	Walnuts	11.0	19.4	76.0
Strawberries	9.6	8.7	-9.3	Raisins	9.2	7.2	-21.0
Raspberries	6.9	4.8	-31.1	Wine	25.8	6.7	-74.1
Wine	4.8	2.6	-45.9	Cherries	3.7	5.1	39.4
Table Grapes	3.0	2.5	-16.0	Oranges and Products	0.8	4.1	387.1
Beef and Products <sup>2</sup>	0.1	2.1	2,236.6	Beef and Products <sup>2</sup>	4.7	4.1	-13.1
<b>9- Taiwan</b>	<b>394.0</b>	<b>360.7</b>	<b>-8.4</b>	<b>12- Australia</b>	<b>278.4</b>	<b>285.9</b>	<b>2.7</b>
Dairy and Products	73.9	80.6	9.0	Dairy and Products	62.1	79.4	27.7
Table Grapes	47.5	46.8	-1.4	Table Grapes	50.6	35.8	-29.2
Beef and Products <sup>2</sup>	39.0	28.5	-27.0	Oranges and Products	15.3	26.4	72.0
Almonds	39.2	27.8	-29.0	Walnuts	19.4	23.8	22.8
Rice	37.5	26.8	-28.6	Pistachios	26.4	22.1	-16.2
Walnuts	21.8	23.7	9.0	Almonds	32.2	20.0	-37.8
Hay	14.6	15.0	2.6	Dates	18.3	15.8	-14.1
Lettuce	13.9	14.6	4.9	Rice	9.3	10.8	15.6
Wine	10.2	12.7	24.5	Tomatoes, Processed	8.4	8.9	6.4
Oranges and Products	12.8	10.1	-20.9	Lemons	7.3	8.7	19.1
Peaches and Nectarines	13.5	9.2	-31.6	Wine	4.4	6.8	54.7
Cherries	8.1	9.2	12.7	Raisins	1.5	5.7	288.2
Pistachios	9.1	8.8	-2.8	Peaches and Nectarines	4.6	3.7	-18.6
Tomatoes, Processed	6.7	7.8	16.0	Tangerines and Mandarins	2.1	3.5	63.6
Raisins	9.4	7.3	-22.7	Prunes	3.9	3.2	-18.3
Plums	6.0	5.6	-7.1				
Cauliflower	8.5	3.9	-54.5	<b>13- Turkey</b>	<b>375.5</b>	<b>281.0</b>	<b>-25.2</b>
Celery	2.5	3.1	25.2	Almonds	146.0	137.9	-5.6
Avocados	2.0	2.9	44.9	Walnuts	136.9	98.2	-28.2
Onions	2.1	2.0	-1.1	Rice	2.7	14.3	431.9
Lemons	2.2	2.0	-11.6	Cotton	25.5	13.7	-46.3
				Pistachios	55.4	11.6	-79.1
				Tomatoes, Processed	7.0	2.3	-68.0



## Major California Agricultural Exports to the Top 15 Destinations, 2019 and 2020

Commodities <sup>1</sup> and Destinations	Approximate Export Value \$1 Million <sup>1</sup>			Commodities <sup>1</sup> and Destinations	Approximate Export Value \$1 Million <sup>1</sup>		
	2019	2020	Percent Change 2019 to 2020		2019	2020	Percent Change 2019 to 2020
<b>14- Saudi Arabia</b>	<b>233.1</b>	<b>234.9</b>	<b>0.8</b>	<b>15- Indonesia</b>	<b>188.9</b>	<b>189.1</b>	<b>0.1</b>
Almonds	69.5	61.7	-11.1	Dairy and Products	116.3	136.8	17.7
Pistachios	42.5	46.5	9.4	Table Grapes	18.4	13.5	-26.7
Rice	31.2	43.3	38.9	Almonds	14.2	10.2	-28.0
Hay	31.8	23.3	-26.6	Beef and Products <sup>2</sup>	5.9	3.9	-33.5
Dairy and Products	12.3	17.2	39.7	Dates	0.8	3.6	329.4
Strawberries	17.8	14.3	-19.6	Cotton	8.3	3.6	-56.7
Walnuts	9.4	9.9	5.1	Oranges and Products	2.7	3.4	25.0
Raspberries and Blackberries <sup>3</sup>	8.3	6.7	-19.1	Onions	3.5	3.1	-8.8
Tomatoes, Processed	3.9	3.6	-6.9	Lemons	1.1	2.5	136.5
Raisins	1.6	2.5	50.8				

<sup>1</sup> This table provides the total export value and export values for individual commodities to the top 15 destinations. Only commodities with export values greater than \$2 million to the destination are reported.

<sup>2</sup> Hides and skins are included in the heading "Beef and Products".

<sup>3</sup> "Raspberries and Blackberries" category also includes exports of mulberries and loganberries.

Source: University of California, Department of Agricultural and Resource Economics



## Major California Agricultural Exports to the European Union (EU), 2019 and 2020

(Approximate Export Value, \$1 Million)

2020

Rank	EU-28 Member <sup>1</sup>	Almonds	Wine	Pistachios	Walnuts	Raisins	Other Principal Products <sup>2</sup>	Total <sup>3</sup>
1	Germany	300	31	224	183	11	29	779
2	Spain	475	1	99	82	0	8	665
3	United Kingdom <sup>4</sup>	99	248	34	35	4	55	476
4	Netherlands	243	16	41	55	3	80	437
5	Italy	210	1	36	62	0	54	363
6	Belgium	54	31	166	0	0	19	271
7	France	81	34	30	2	0	8	156
8	Denmark	18	43	0	4	2	1	68
9	Sweden	18	19	1	3	12	5	59
10	Greece	34	0	1	2	0	3	41
	Other EU Members <sup>5</sup>	101	16	30	5	5	27	184
	<b>Total <sup>3</sup></b>	<b>1,634</b>	<b>441</b>	<b>662</b>	<b>435</b>	<b>37</b>	<b>290</b>	<b>3,498</b>

2019

Rank	EU-28 Member <sup>1</sup>	Almonds	Wine	Pistachios	Walnuts	Raisins	Other Principal Products <sup>2</sup>	Total <sup>3</sup>
1	Spain	594	2	99	97	<1	21	814
2	Germany	297	31	201	166	10	27	732
3	United Kingdom <sup>4</sup>	255	13	57	73	5	70	473
4	Netherlands	110	222	37	26	6	56	455
5	Italy	212	3	52	94	<1	34	395
6	Belgium	62	30	112	2	<1	21	228
7	France	86	32	42	1	<1	10	172
8	Sweden	21	19	1	3	11	8	63
9	Denmark	20	32	0	2	3	2	58
10	Estonia	38	<1	10	<1	<1	<1	48
	Other EU Members <sup>6</sup>	111	22	40	4	5	39	221
	<b>Total <sup>3</sup></b>	<b>1,806</b>	<b>405</b>	<b>649</b>	<b>470</b>	<b>41</b>	<b>288</b>	<b>3,658</b>

<sup>1</sup> The EU-28 members to which California exports are shipped reflect only the initial destination of the product, not the EU country of consumption. Many products are distributed throughout the EU after the initial entry.

<sup>2</sup> "Other Principal Products" are those that individually account for less than \$100 million in export value to the EU.

<sup>3</sup> Accurate export destination data is only available for 50 of the top 57 commodities. The commodities for which export destinations are not included are "Apples", "Chickens", "Eggs", "Mushrooms", "Seeds for Sowing", "Turkey", and "Wheat". Totals may not equal due to rounding.

<sup>4</sup> This list includes the United Kingdom which withdrew from the European Union on January 31, 2020.

<sup>5</sup> The other 18 EU members in 2020 include Austria, Bulgaria, Cyprus, Croatia, Czech Republic, Estonia, Finland, Hungary, Ireland, Latvia, Lithuania, Luxembourg, Malta, Poland, Portugal, Romania, Slovak Republic, and Slovenia. These countries combined account for just over 5 percent of California agricultural exports to the EU in 2017 and 2018.

<sup>6</sup> The other 18 EU members in 2019 include Austria, Bulgaria, Cyprus, Croatia, Czech Republic, Finland, Greece, Hungary, Ireland, Latvia, Lithuania, Luxembourg, Malta, Poland, Portugal, Romania, Slovak Republic, and Slovenia. These countries combined account for just over 5 percent of California agricultural exports to the EU in 2017 and 2018.

Source: University of California, Department of Agricultural and Resource Economics

## Ratio of California Farm Quantity Exported to Farm Quantity Produced, 2019 and 2020

(Export Volumes in Farm Weight Basis)

Commodity	Farm-Gate Units	2019			2020		
		Quantity Exported <sup>1</sup>	Quantity Produced	Ratio of Quantity Exported to Quantity Produced	Quantity Exported <sup>1</sup>	Quantity Produced	Ratio of Quantity Exported to Quantity Produced
		1,000 Farm-Gate Units			1,000 Farm-Gate Units		
Almonds	cwt.	15,845	25,500	0.62	18,101	31,150	0.58
Apples	cwt.	732	2,564	0.29	618	2,683	0.23
Apricots	short tons	12	44	0.28	13,392	31,100	0.43
Artichokes	cwt.	39	956	0.04	59	793	0.07
Asparagus	cwt.	5	172	0.03	4	132	0.03
Avocados <sup>2</sup>	short tons	7	108	0.06	13	188	0.07
Beef and Products <sup>3</sup>	liveweight cwt.	1,799	23,123	0.08	1,870	22,765	0.08
Blueberries	cwt.	185	718	0.26	202	789	0.26
Broccoli	cwt.	1,225	15,152	0.08	1,194	14,248	0.08
Cabbage	cwt.	309	6,478	0.05	228	5,863	0.04
Carrots <sup>2</sup>	cwt.	1,799	26,832	0.07	1,744	24,723	0.07
Cauliflower	cwt.	2,024	9,824	0.21	1,701	7,783	0.22
Celery	cwt.	1,841	15,720	0.12	2,162	16,112	0.13
Cherries	short tons	19	53	0.36	19	64	0.29
Cotton	bales	777	821	0.95	603	615	0.98
Cottonseed and Byproducts	short tons	38	290	0.13	47	294	0.16
Dairy and Products <sup>2,4</sup>	cwt.	108,746	405,950	0.27	133,721	412,820	0.32
Dates	cwt.	248	1,228	0.20	304	1,252	0.24
Dried Plums	short tons	108	274	0.39	109	177	0.62
Dry Beans	cwt.	434	1,054	0.41	323	867	0.37
Eggs	100-dozens	159	3,250	0.05	179	3,277	0.05
Figs	short tons	7	16	0.43	6	14	0.43
Garlic	cwt.	330	3,829	0.09	381	3,458	0.11
Grapefruit <sup>2</sup>	short tons	59	188	0.31	62	156	0.40
Grapes, All <sup>5</sup>	short tons	1,330	5,647	0.24	1,324	5,295	0.25
Hay	short tons	1,180	4,118	0.29	1,184	3,420	0.35
Kiwi	short tons	12	37	0.33	12	40	0.29
Lemons	76 lb. boxes	2,830	25,300	0.11	2,761	21,300	0.13
Lettuce <sup>2</sup>	cwt.	4,387	58,487	0.08	4,238	66,120	0.06
Melons	cwt.	1,907	16,131	0.12	1,773	14,523	0.12
Olives and Olive Oil	short tons	47	168	0.28	31	68	0.45
Onions <sup>2</sup>	cwt.	3,658	18,270	0.20	3,540	19,046	0.19
Oranges and Products <sup>2</sup>	short tons	610	2,164	0.28	649	2,004	0.32
Peaches and Nectarines	cwt.	1,047	12,542	0.08	951	11,720	0.08
Pears	short tons	29	161	0.18	24	115	0.21
Peppers, Bell and Chili	cwt.	314	6,516	0.05	331	6,813	0.05
Pistachios	cwt., in shell	5,678	7,400	0.77	4,526	10,450	0.43
Plums	short tons	29	92	0.31	24	105	0.23
Potatoes <sup>2</sup>	cwt.	1,190	18,601	0.06	879	12,560	0.07
Raspberries and Blackberries <sup>6</sup>	cwt.	445	1,435	0.31	441	1,530	0.29
Rice <sup>2</sup>	cwt.	20,228	42,362	0.48	22,076	44,810	0.49
Spinach	cwt.	671	7,014	0.10	737	5,052	0.15
Strawberries	cwt.	2,701	20,480	0.13	2,580	21,500	0.12
Sweet Potatoes	cwt.	1,579	8,121	0.19	1,542	7,920	0.19
Tangerines and Mandarins	short tons	46	896	0.05	46	1,124	0.04
Tomatoes, Fresh	cwt.	436	6,485	0.07	408	6,551	0.06
Tomatoes, Processed <sup>2</sup>	short tons	2,907	11,186	0.26	2,851	11,312	0.25
Turkey	liveweight cwt.	108	2,542	0.04	90	2,320	0.04
Walnuts	short tons	429	653	0.66	443	785	0.56
Wheat <sup>2</sup>	bushels	2,891	7,244	0.40	1,385	7,740	0.18
<b>Weighted Average<sup>7</sup></b>				<b>0.28</b>			<b>0.32</b>

<sup>1</sup> Export quantities of processed goods were converted to farm fresh quantities using conversion factors published by USDA ERS (<https://www.ers.usda.gov/publications/pub-details/?pubid=41881>) or annual conversion factors published by USDA NASS in annual crop summaries.

<sup>2</sup> Quantities for 2019 were revised based on updated production data from the U.S. Department of Agriculture/National Agricultural Statistics Service.

<sup>3</sup> Hides and skins are included in the heading "Beef and Products".

<sup>4</sup> Farm quantity exported for "Dairy and Products" is calculated by converting cheese, condensed milk, fluid milk, ice cream, nonfat dry milk, and whole dry milk to their fluid milk equivalents.

<sup>5</sup> "Grapes, All" includes grape juice, raisins, table grapes, and wine.

<sup>6</sup> "Raspberries and Blackberries" category also includes exports of mulberries and loganberries.

<sup>7</sup> The weighted average is based on each of the 53 commodity's share of production value. Values for "Chickens", "Flowers and Nursery Products", "Mushrooms" and "Seeds for Sowing" are not included because reliable data on export quantity is not available.

Source: University of California, Department of Agricultural and Resource Economics