



Madison, Wisconsin

CITY OF MADISON

CITY ENGINEERING DIVISION

DEPARTMENT OF PUBLIC WORKS

PLAN OF PROPOSED IMPROVEMENT

INDEX OF SHEETS

FOR CONSTRUCTION WITH PHASE 11 (PROJ. NO. 13303)

- *SHEET NO. 1 OL 48 BASIN LAYOUT
- *SHEET NO. 2 OL 48 POND CROSS SECTIONS
- *SHEET NO. 3 OL 48 POND CROSS SECTIONS
- *SHEET NO. 4 OL 47 CHANNEL LAYOUT

* = REVISED SHEETS AS PART OF CURRENT PLAN REVISION

VILLAGE AT AUTUMN LAKE: STORM WATER MANAGEMENT PLAN

CITY PROJECT NO. 11287
CONTRACT NO. 7606

PUBLIC IMPROVEMENT PROJECT
APPROVED

NOVEMBER 17, 2021

BY THE COMMON COUNCIL
OF MADISON, WISCONSIN

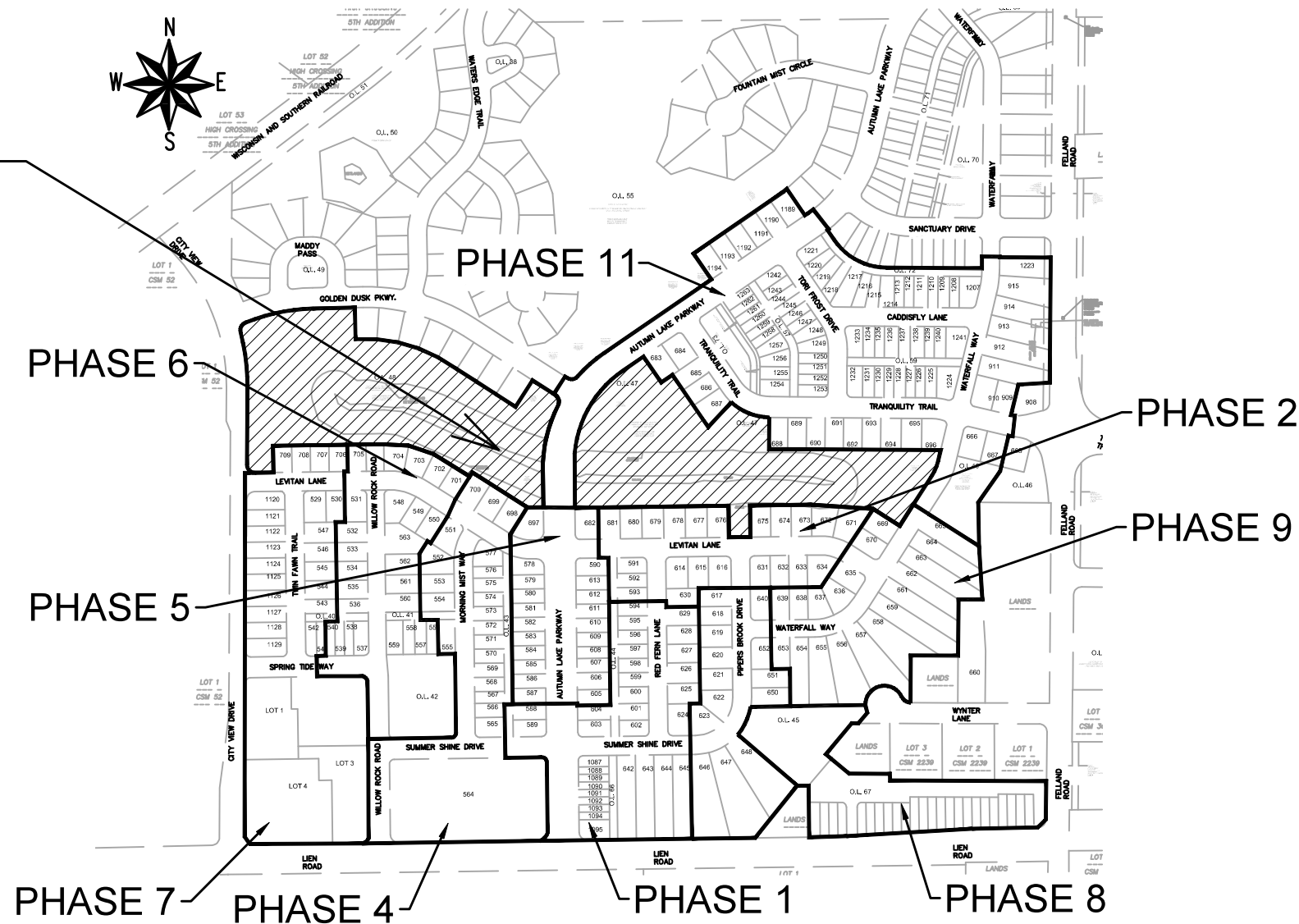
PUBLIC IMPROVEMENT DESIGN
APPROVED BY:

W. Greg Fries 4/27/21
City Engineer Date

STORMWATER MANAGEMENT
DESIGNED BY:



PROJECT
LOCATION

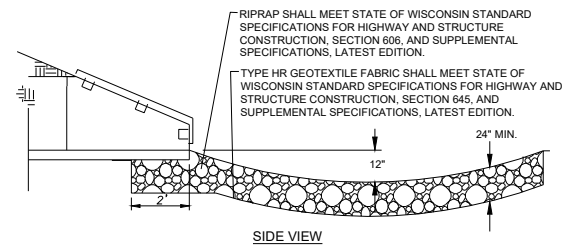
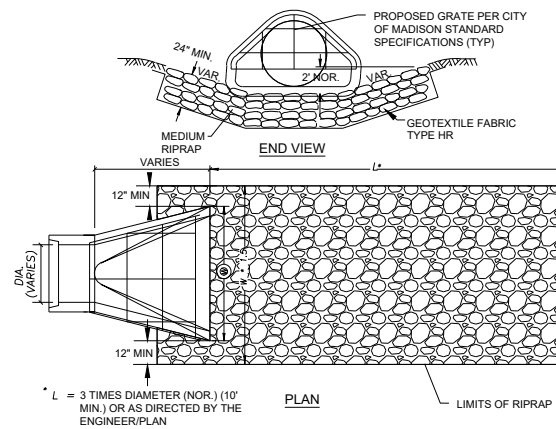


PLOT SCALE: 1"=1'-0" XREF

PLOT NAME: STREETS-AJC

REV. DATE: 4/15/2021 10:33 AM

ORIGINATOR: CITY_OF_MADISON



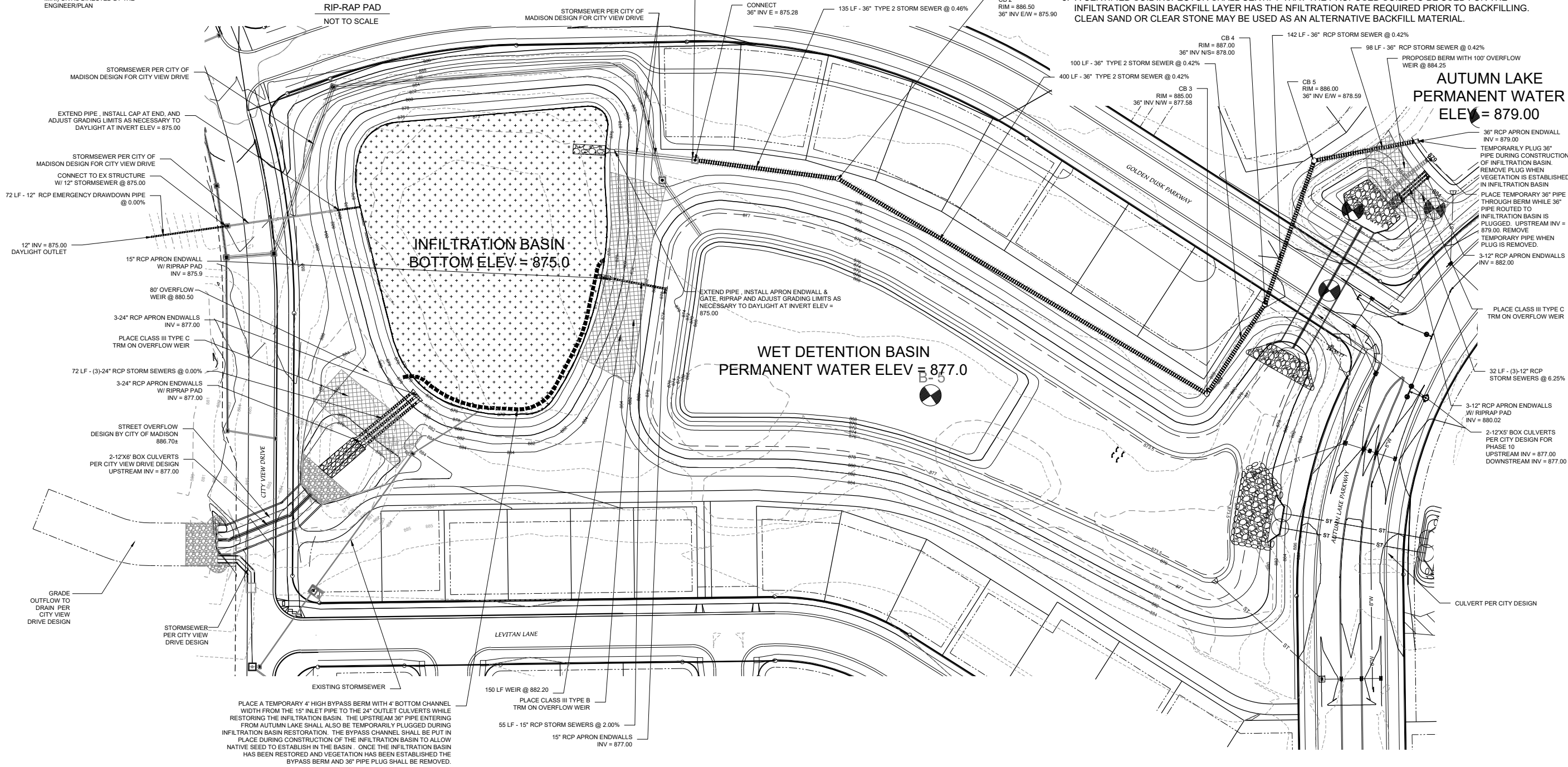
STRUCTURE PER CITY OF MADISON DESIGN FOR CITY VIEW DRIVE

CONNECT 36" INV E = 875.28

135 LF - 36" TYPE 2 STORM SEWER @ 0.46%

CB 2 RIM = 886.50 36" INV E/W = 875.90

- GENERAL NOTES:
1. ALL SITE WORK AND MATERIALS SHALL BE PER THE CITY OF MADISON STANDARD SPECIFICATIONS.
 2. EROSION CONTROL MEASURES SHALL BE PLACED PER THE APPROVED EROSION CONTROL PLAN.
 3. LENGTHS OF CULVERTS INCLUDE ENDWALLS.
 4. CULVERT LENGTHS SHALL BE FIELD VERIFIED DURING CONSTRUCTION TO ENSURE THAT THEY ARE LONG ENOUGH TO CONFORM TO TYPICAL CROSS SECTION.
 5. ALL DISTURBED AREAS SHALL RECEIVE A MINIMUM OF 6" OF TOPSOIL, FERTILIZER, SEED AND MULCH. SEED MIXTURE WITHIN THE OUTLOT, EXCEPT FOR THE INFILTRATION AND DETENTION BASIN AREA, SHALL BE CITY OF MADISON SHORTGRASS SEEDING OR EQUIVALENT APPLIED PER THE CITY OF MADISON STANDARDS. THE INFILTRATION AND DETENTION BASIN AREAS SHALL BE SEED WITH A NATIVE SEED MIX TOLERANT OF FLUCTUATING WATER CONDITIONS. FERTILIZER SHALL BE PLACED PER A SOIL TEST.
 6. ENGINEERED SOIL IN INFILTRATION BASIN SHALL BE 70-85% SAND & 15-30% COMPOST
 7. SEE APPROVED ENGINEERING PLANS FOR SITE STORM SEWER TYPE, LENGTHS, AND SIZES
 8. A CERTIFIED SOIL INSPECTOR SHALL CERTIFY THAT THE PROPOSED SOILS TO BE USED FOR THE INFILTRATION BASIN BACKFILL LAYER HAS THE INFILTRATION RATE REQUIRED PRIOR TO BACKFILLING. CLEAN SAND OR CLEAR STONE MAY BE USED AS AN ALTERNATE BACKFILL MATERIAL.



STORMSEWER PER CITY OF MADISON DESIGN FOR CITY VIEW DRIVE

EXTEND PIPE, INSTALL CAP AT END, AND ADJUST GRADING LIMITS AS NECESSARY TO DAYLIGHT AT INVERT ELEV = 875.00

STORMSEWER PER CITY OF MADISON DESIGN FOR CITY VIEW DRIVE

CONNECT TO EX STRUCTURE W/ 12" STORMSEWER @ 875.00

72 LF - 12" RCP EMERGENCY DRAWDOWN PIPE @ 0.00%

12" INV = 875.00 DAYLIGHT OUTLET

15" RCP APRON ENDWALL W/ RIPRAP PAD INV = 875.9

80' OVERFLOW WEIR @ 880.50

3-24" RCP APRON ENDWALLS INV = 877.00

PLACE CLASS III TYPE C TRM ON OVERFLOW WEIR

72 LF - (3)-24" RCP STORM SEWERS @ 0.00%

3-24" RCP APRON ENDWALLS W/ RIPRAP PAD INV = 877.00

STREET OVERFLOW DESIGN BY CITY OF MADISON 886.70±

2-12"x6" BOX CULVERTS PER CITY VIEW DRIVE DESIGN UPSTREAM INV = 877.00

GRADE OUTFLOW TO DRAIN PER CITY VIEW DRIVE DESIGN

STORMSEWER PER CITY VIEW DRIVE DESIGN

EXISTING STORMSEWER

150 LF WEIR @ 882.20

PLACE CLASS III TYPE B TRM ON OVERFLOW WEIR

55 LF - 15" RCP STORM SEWERS @ 2.00%

15" RCP APRON ENDWALLS INV = 877.00

PLACE A TEMPORARY 4" HIGH BYPASS BERM WITH 4" BOTTOM CHANNEL WIDTH FROM THE 15" INLET PIPE TO THE 24" OUTLET CULVERTS WHILE RESTORING THE INFILTRATION BASIN. THE UPSTREAM 36" PIPE ENTERING FROM AUTUMN LAKE SHALL ALSO BE TEMPORARILY PLUGGED DURING INFILTRATION BASIN RESTORATION. THE BYPASS CHANNEL SHALL BE PUT IN PLACE DURING CONSTRUCTION OF THE INFILTRATION BASIN TO ALLOW NATIVE SEED TO ESTABLISH IN THE BASIN. ONCE THE INFILTRATION BASIN HAS BEEN RESTORED AND VEGETATION HAS BEEN ESTABLISHED THE BYPASS BERM AND 36" PIPE PLUG SHALL BE REMOVED.

EXTEND PIPE, INSTALL APRON ENDWALL & GATE, RIPRAP AND ADJUST GRADING LIMITS AS NECESSARY TO DAYLIGHT AT INVERT ELEV = 875.00

100 LF - 36" TYPE 2 STORM SEWER @ 0.42%

400 LF - 36" TYPE 2 STORM SEWER @ 0.42%

CB 3 RIM = 885.00 36" INV NW = 877.58

142 LF - 36" RCP STORM SEWER @ 0.42%

98 LF - 36" RCP STORM SEWER @ 0.42%

PROPOSED BERM WITH 100' OVERFLOW WEIR @ 884.25

36" RCP APRON ENDWALL INV = 879.00

TEMPORARILY PLUG 36" PIPE DURING CONSTRUCTION OF INFILTRATION BASIN. REMOVE PLUG WHEN VEGETATION IS ESTABLISHED IN INFILTRATION BASIN. PLACE TEMPORARY 36" PIPE THROUGH BERM WHILE 36" PIPE ROUTED TO INFILTRATION BASIN IS PLUGGED. UPSTREAM INV = 879.00. REMOVE TEMPORARY PIPE WHEN PLUG IS REMOVED.

3-12" RCP APRON ENDWALLS INV = 882.00

PLACE CLASS III TYPE C TRM ON OVERFLOW WEIR

32 LF - (3)-12" RCP STORM SEWERS @ 6.25%

3-12" RCP APRON ENDWALLS W/ RIPRAP PAD INV = 880.02

2-12"x6" BOX CULVERTS PER CITY DESIGN FOR PHASE 10 UPSTREAM INV = 877.00 DOWNSTREAM INV = 877.00

CULVERT PER CITY DESIGN

LEVITAN LANE

AUTUMN LAKE PARKWAY

GOLDEN DUSK PARKWAY

CITY VIEW DRIVE

INFILTRATION BASIN BOTTOM ELEV = 875.0

WET DETENTION BASIN PERMANENT WATER ELEV = 877.0

AUTUMN LAKE PERMANENT WATER ELEV = 879.00

HATCH INDICATES INFILTRATION BASIN BOTTOM AREA. THIS AREA SHALL BE SEED WITH A NATIVE SEED MIX TOLERANT OF FLUCTUATING WATER CONDITIONS.

DATE: 04/14/21

REVISED: 06-10-21

DRAWN BY: DND

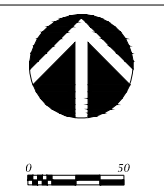
FN: 19-05-138

Sheet Number: 1

REVISED 06-10-21: STORM SEWER AND PROPOSED CONTOURS UPDATED PER REVISED PLAN ON EASTERN END OF BASIN.

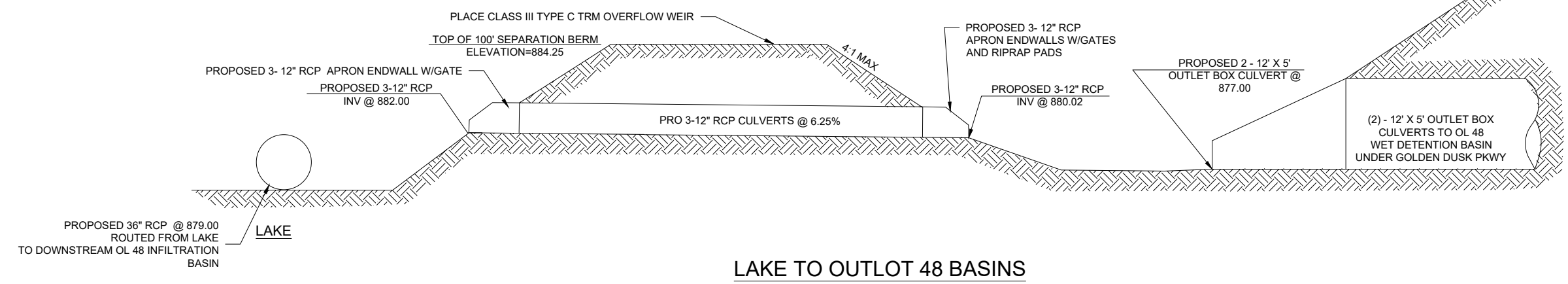
D'ONOFRIO KOTTKE AND ASSOCIATES, INC.
7530 Westwood Way, Madison, WI 53717
Phone: 608.833.7500 • Fax: 608.833.1089
YOUR NATURAL RESOURCE FOR LAND DEVELOPMENT

PROPOSED STORMWATER BASIN LAYOUT - OUTLOT 48
VILLAGE AT AUTUMN LAKE
CITY OF MADISON, DANE COUNTY, WISCONSIN



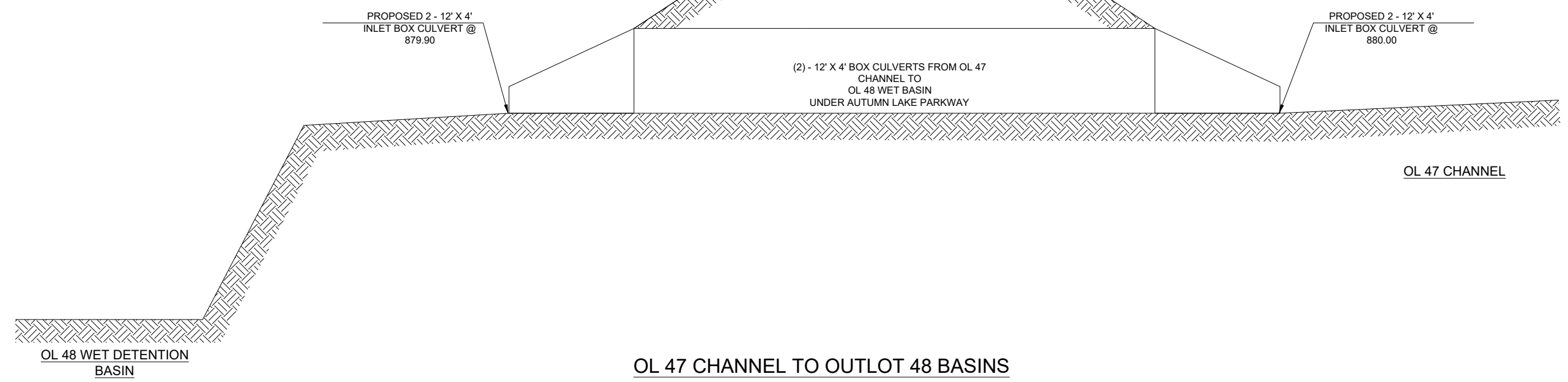
DATE: 04/14/21
REVISED: 06-10-21
DRAWN BY: DND
FN: 19-05-138
Sheet Number: 1

GOLDEN DUSK PARKWAY



LAKE TO OUTLOT 48 BASINS

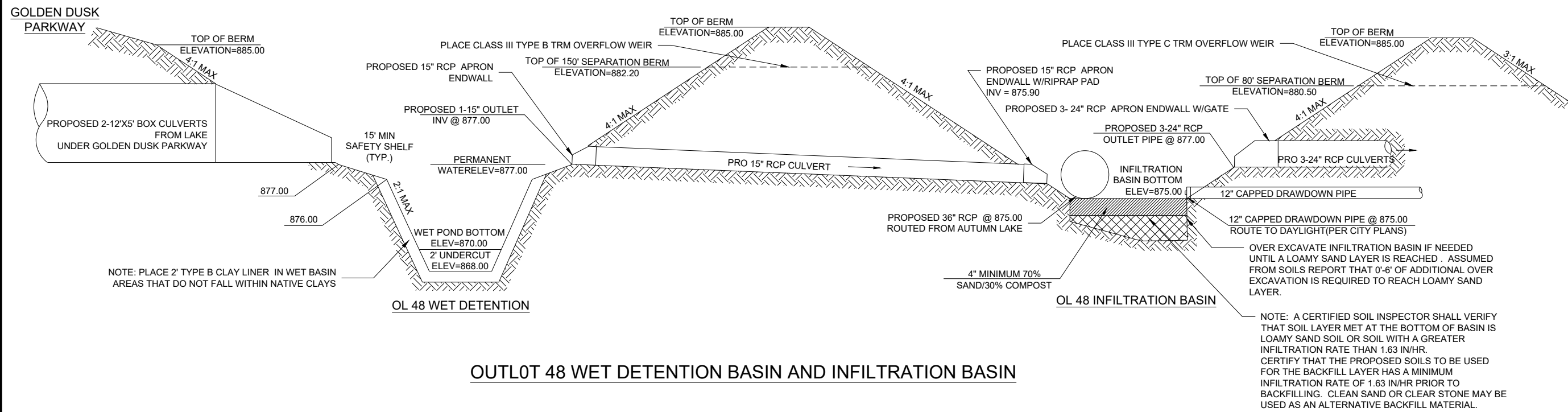
AUTUMN LAKE PARKWAY



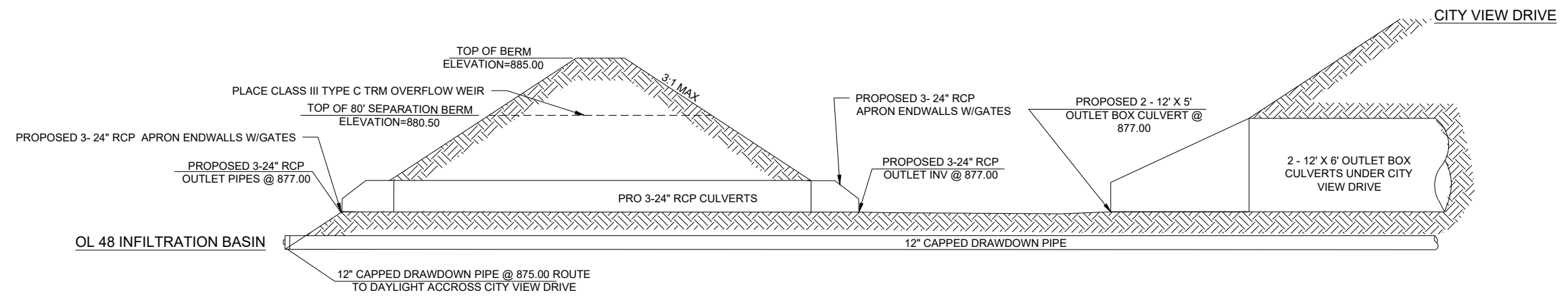
OL 47 CHANNEL TO OUTLOT 48 BASINS

OL 47 CHANNEL

OL 48 WET DETENTION BASIN



OUTLOT 48 WET DETENTION BASIN AND INFILTRATION BASIN



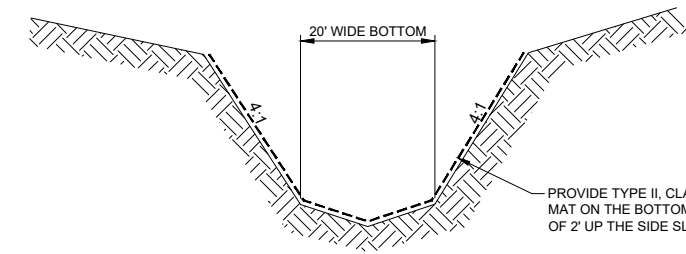
OUTLOT 48 INFILTRATION BASIN TO CITY VIEW DRIVE CULVERT

D'ONOFRIO KOTTKE AND ASSOCIATES, INC.
 7530 Westward Way, Madison, WI 53717
 Phone: 608.833.7500 • Fax: 608.833.1089
 YOUR NATURAL RESOURCE FOR LAND DEVELOPMENT

OL 48 POND CROSS SECTIONS
VILLAGE AT AUTUMN LAKE
 CITY OF MADISON, DANE COUNTY, WISCONSIN

DATE: 04/14/21
 REVISED:

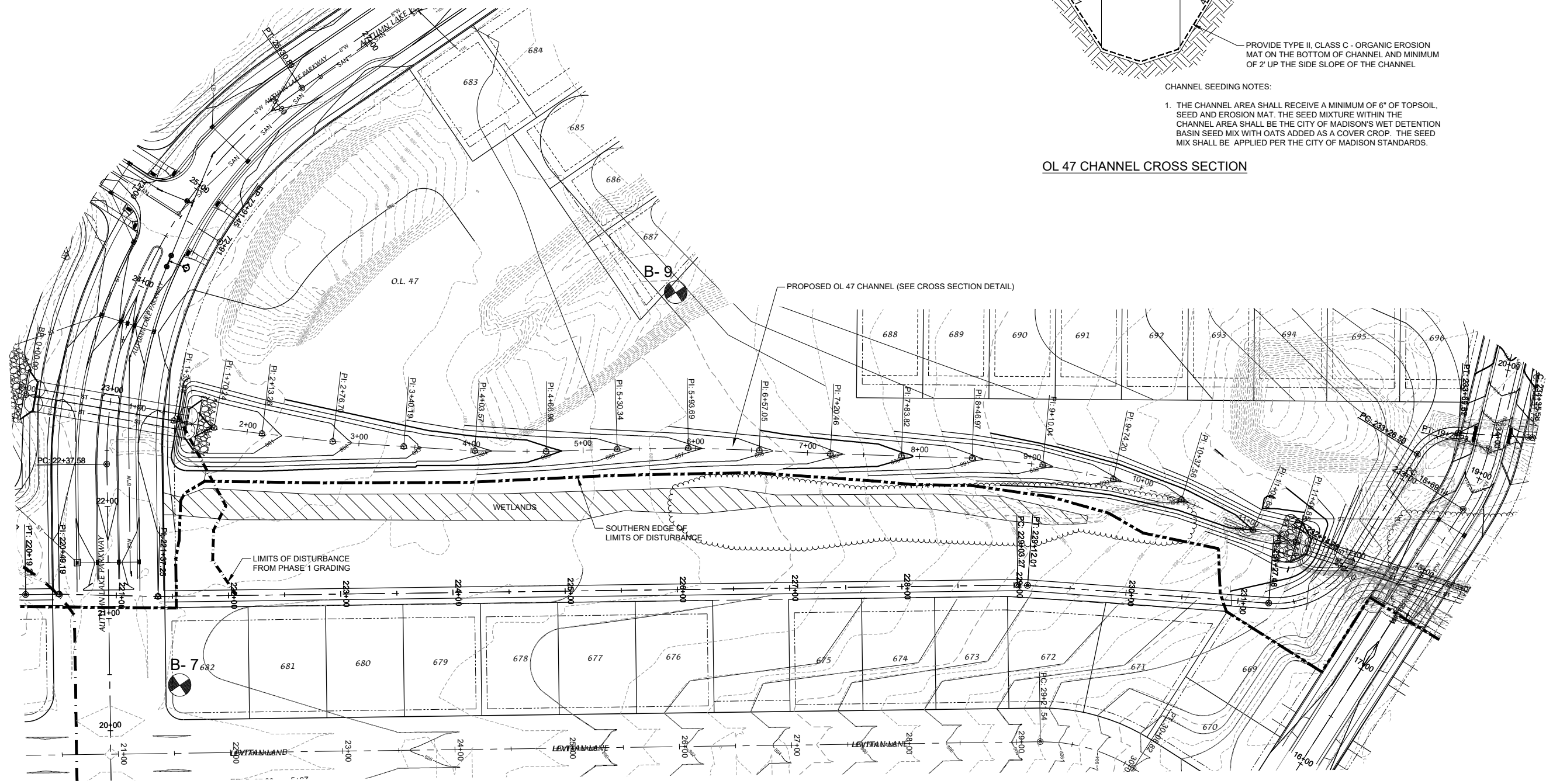
 DRAWN BY: DND
 FN: 19-05-138
 Sheet Number:
 3



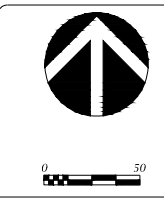
CHANNEL SEEDING NOTES:

1. THE CHANNEL AREA SHALL RECEIVE A MINIMUM OF 6" OF TOPSOIL, SEED AND EROSION MAT. THE SEED MIXTURE WITHIN THE CHANNEL AREA SHALL BE THE CITY OF MADISON'S WET DETENTION BASIN SEED MIX WITH OATS ADDED AS A COVER CROP. THE SEED MIX SHALL BE APPLIED PER THE CITY OF MADISON STANDARDS.

OL 47 CHANNEL CROSS SECTION



**REVISED 06-10-21: CHANNEL CONTOURS
 UPDATED FOR REVISED BOX CULVERT
 LOCATION ON AUTUMN LAKE PARKWAY.**



DATE: 04/23/21
 REVISED:
 06/10/21

DRAWN BY: DND

FN: 20-05-155

Sheet Number:
 4