



Madison, Wisconsin

INDEX OF SHEETS

FOR CONSTRUCTION WITH PHASE 1 (PROJ NO. 11311)

- SHEET NO. 1 OL 6 DETENTION BASIN
- ** SHEET NO. 2 NORTH TEMPORARY INFILTRATION BASIN
- ** SHEET NO. 3 WEST TEMPORARY DETENTION & INFILTRATION BASIN
- SHEET NO. 4 CROSS SECTION-OL 6 DETENTION BASIN
- SHEET NO. 5 CROSS SECTION-NORTH TEMPORARY INFILTRATION BASIN

FOR CONSTRUCTION WITH PHASE 2 (PROJ NO. 11500)

- SHEET NO. 6 OL 1 CHANNEL
- SHEET NO. 7 OL 5 CHANNEL/INFILTRATION BASIN
- SHEET NO. 8 OL 3 STORMWATER FACILITY
- SHEET NO. 9 OL 3 STORMWATER FACILITY DETAILS (CELL 1-3)
- SHEET NO. 10 OL 3 STORMWATER FACILITY DETAILS (CELL 4-5)

FOR CONSTRUCTION WITH PHASE 6 (PROJ NO. 11935)

- SHEET NO. 11 OL 2 INFILTRATION/CHANNEL PLAN
- SHEET NO. 12 OL 2 INFILTRATION/CHANNEL DETAIL

FOR CONSTRUCTION WITH PHASE 7 (PROJ NO. 11996)

- * SHEET NO. 13 OL 17 INFILTRATION BASIN PLAN
- * SHEET NO. 14 OL 17 INFILTRATION BASIN PROFILE

* = REVISED SHEETS ADDED AS PART OF CURRENT PLAN REVISION
 ** = TEMPORARY BASIN NO LONGER APPLICABLE. SHEETS REMOVED FROM PLANS

☒ = PROJECT LOCATION

☐ = PHASE 7 STREET PLANS (PROJ NO. 11996)

FOR PHASE 6 STREET PLANS, SEE:
 CITY PROJECT NO. 11935
 CITY CONTRACT NO. 8198
 MUNIS NO. 11935

FOR PHASE 7 STREET PLANS, SEE:
 CITY PROJECT NO. 11996
 CITY CONTRACT NO. 8336
 MUNIS NO. 11996

CITY OF MADISON

CITY ENGINEERING DIVISION DEPARTMENT OF PUBLIC WORKS PLAN OF PROPOSED IMPROVEMENT

FIRST ADDITION TO 1000 OAKS: STORMWATER MANAGEMENT

CITY PROJECT NO. 11312 CITY CONTRACT NO. 7649 MUNIS NO. 11312

PUBLIC IMPROVEMENT PROJECT APPROVED

MARCH 1, 2016

BY THE COMMON COUNCIL OF MADISON, WISCONSIN

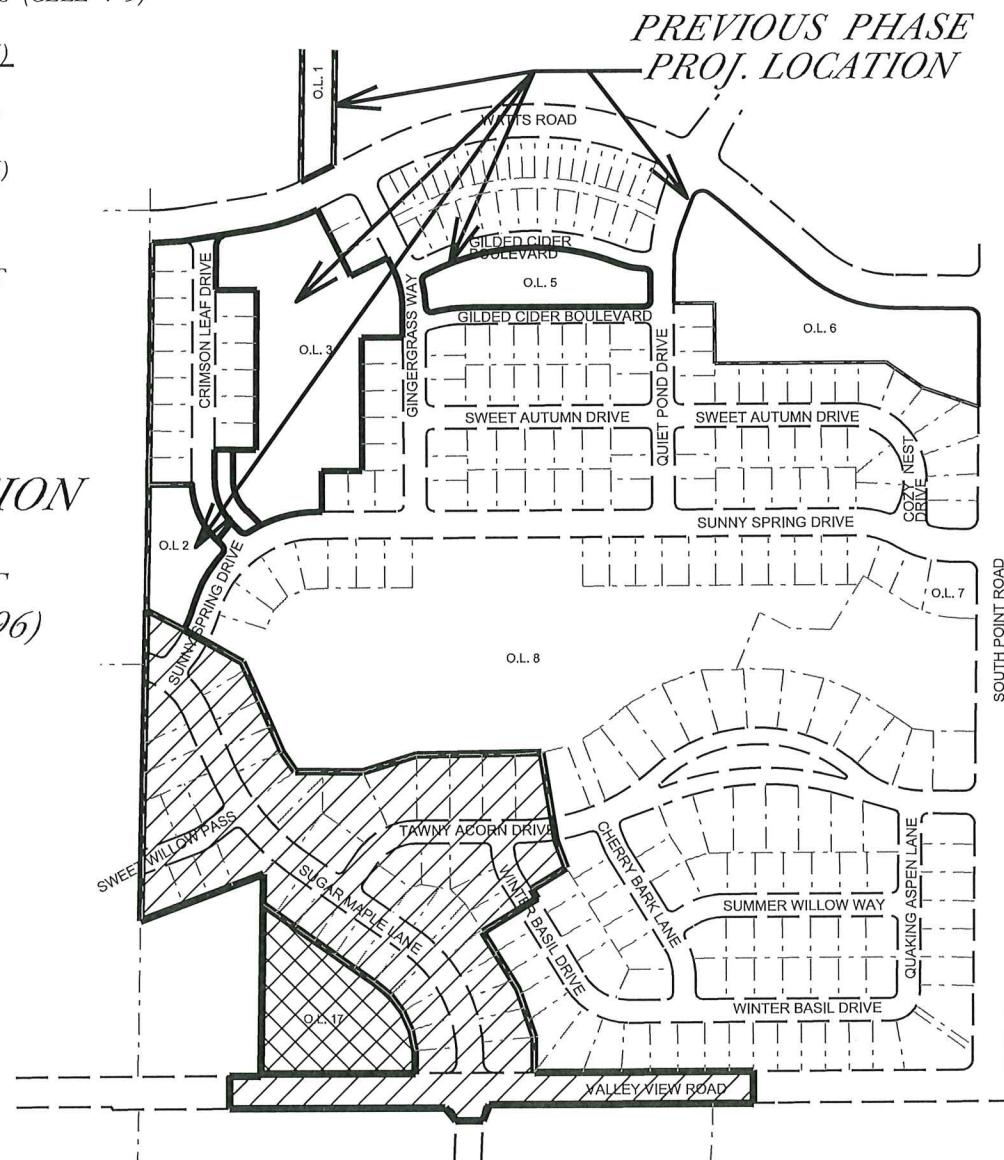
PUBLIC IMPROVEMENT DESIGN APPROVED BY:

City Engineer

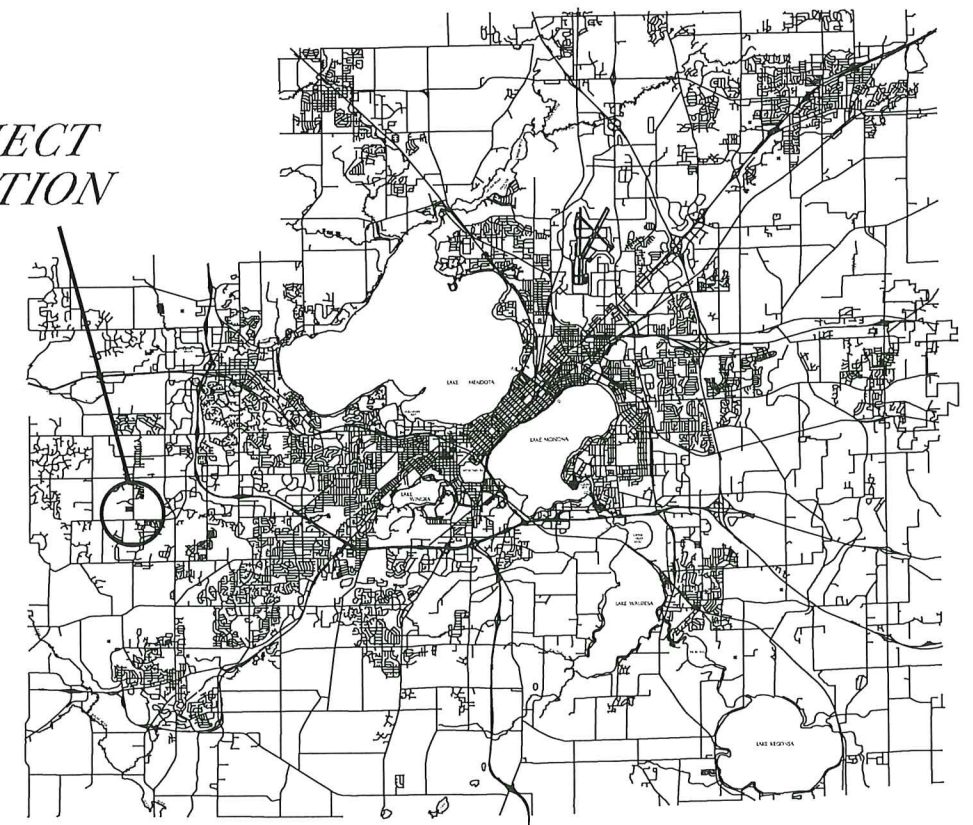
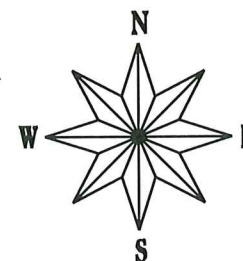
Date

STORM SEWER DESIGNED BY:

SEE
 INDIVIDUAL
 SHEETS



PROJECT LOCATION

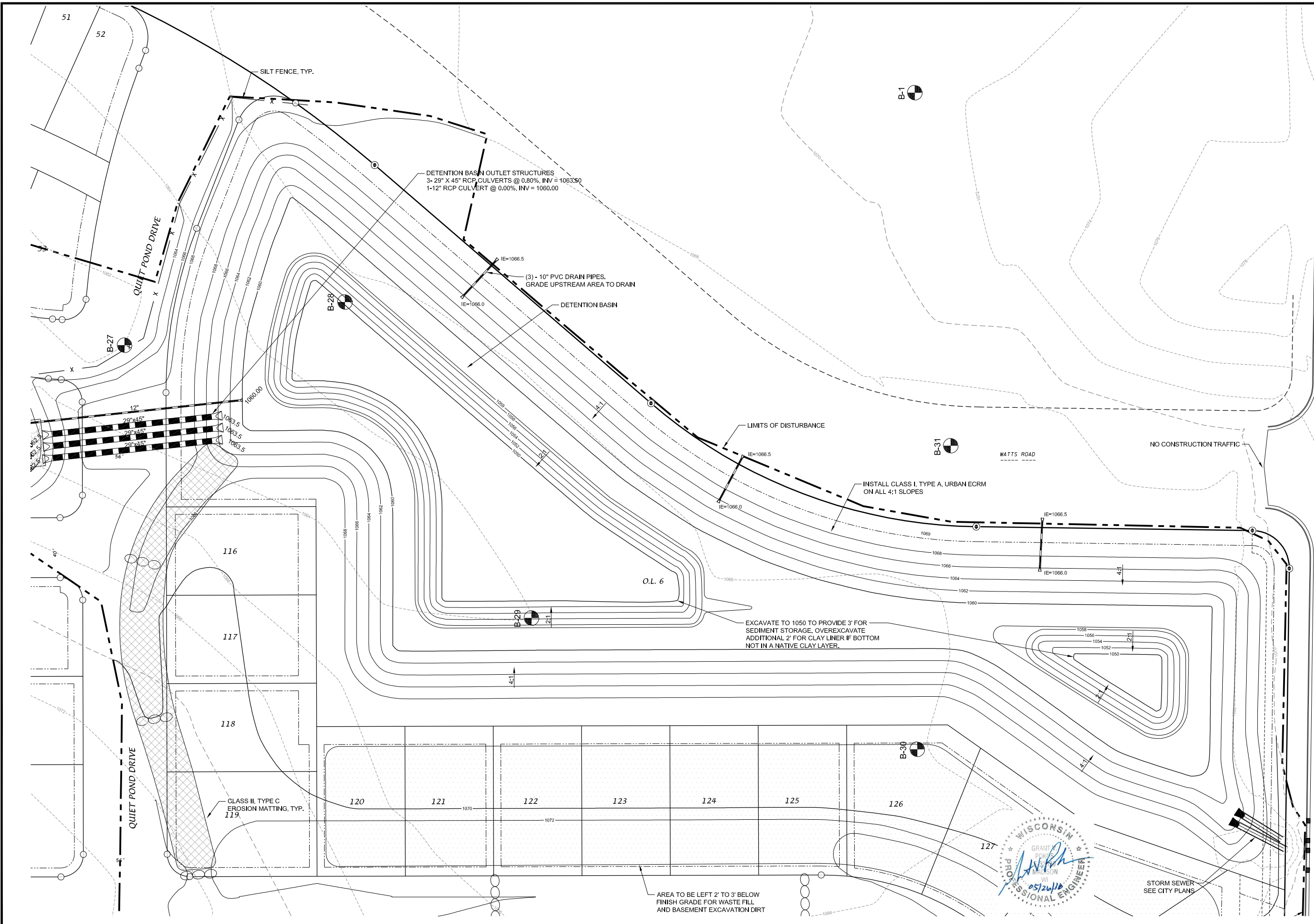


PLOT SCALE:

PLOT NAME:

REV. DATE:

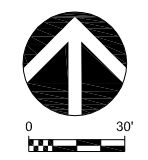
ORIGINATOR: CITY OF MADISON, STREETS DIVISION



D'ONOFRIO KOTTKE AND ASSOCIATES, INC.
 7530 Westward Way, Madison, WI 53717
 Phone: 608.833.7530 • Fax: 608.833.1089
YOUR NATURAL RESOURCE FOR LAND DEVELOPMENT

PHASE I - OL 6 DETENTION BASIN
1000 OAKS - Phase 1 Basin Plans

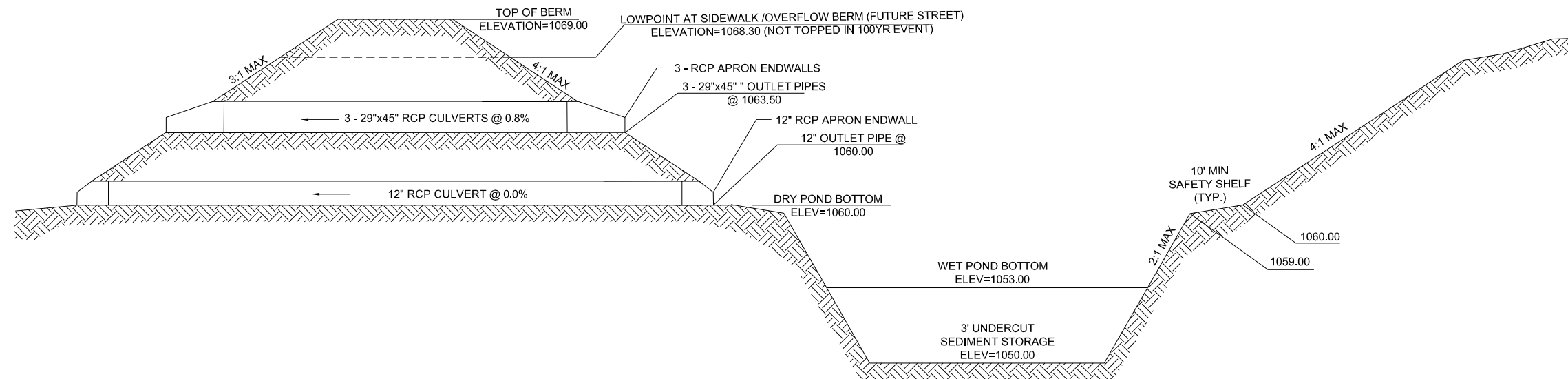
CITY OF MADISON, WISCONSIN



DATE: 05/26/16
 REVISED:

DRAWN BY: GVP
 EN: 13-05-152
 Sheet Number:
1 OF 5





PROFILE VIEW

PROPOSED OUTLOT 6 PERMANENT DETENTION BASIN
NOT TO SCALE

D'ONOFRIO KOTTKE AND ASSOCIATES, INC.
7530 Westward Way, Madison, WI 53717
Phone: 608.833.7530 • Fax: 608.833.1089
YOUR NATURAL RESOURCE FOR LAND DEVELOPMENT

OUTLOT 6 DETENTION BASIN - CROSS SECTION
1000 OAKS - Phase 1 Basin Plans

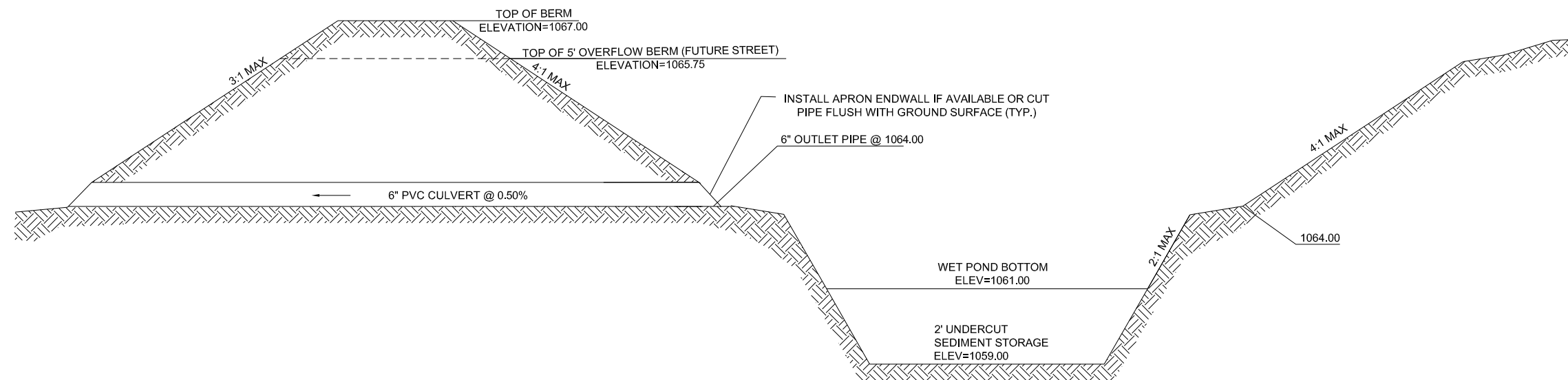
CITY OF MADISON, WISCONSIN



DATE: 05/26/16
REVISED:

DRAWN BY: GVP
FN: 13-05-152
Sheet Number:





PROFILE VIEW

PROPOSED PHASE 1 TEMPORARY DETENTION BASIN
NOT TO SCALE

D'ONOFRIO KOTTKE AND ASSOCIATES, INC.
7530 Westward Way, Madison, WI 53717
Phone: 608.833.7530 • Fax: 608.833.1089
YOUR NATURAL RESOURCE FOR LAND DEVELOPMENT

PHASE 1 TEMPORARY DETENTION BASIN - CROSS SECTION
1000 OAKS - PHASE 1 BASIN PLANS

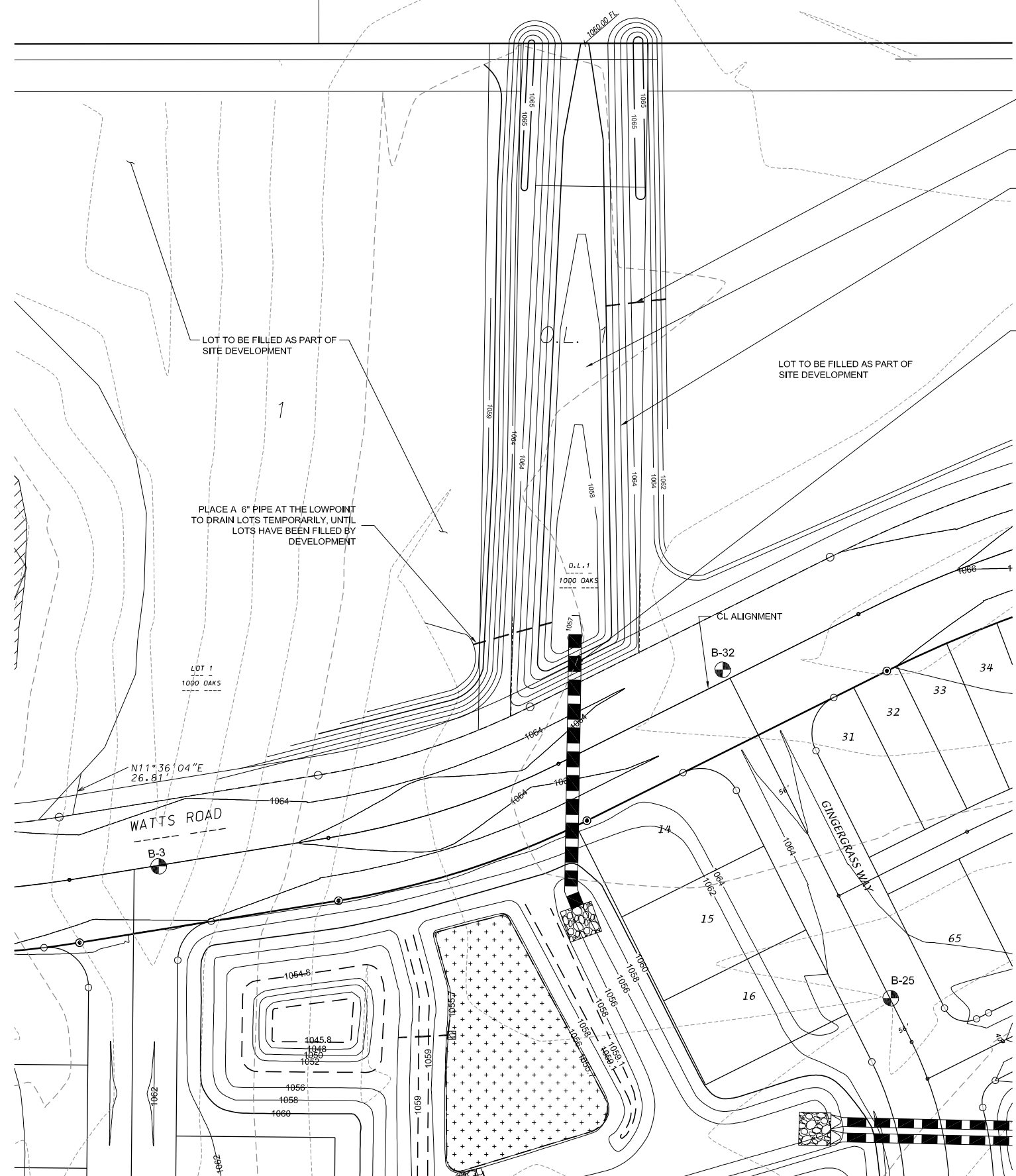
CITY OF MADISON, WISCONSIN



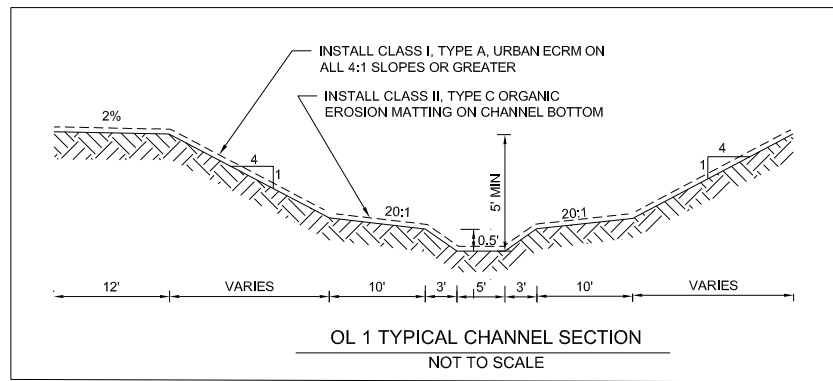
DATE: 05/26/16
REVISED:

DRAWN BY: GVP
FN: 13-05-152
Sheet Number:



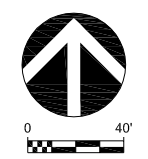


- PLACE A 6" PIPE AT THE LOWPOINT TO DRAIN LOTS TEMPORARILY, UNTIL LOTS HAVE BEEN FILLED BY DEVELOPMENT
- INSTALL CLASS II, TYPE C ORGANIC EROSION MATTING ON CHANNEL BOTTOM
- INSTALL CLASS I, TYPE A, URBAN ECRM ON ALL 4:1 SLOPES OR GREATER
- SEE CITY PROJECT NO. 11438 FOR CULVERT DESIGN AND LOCATION



OL 1 CHANNEL
1000 OAKS - Basin Plans

CITY OF MADISON, WISCONSIN



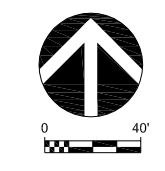
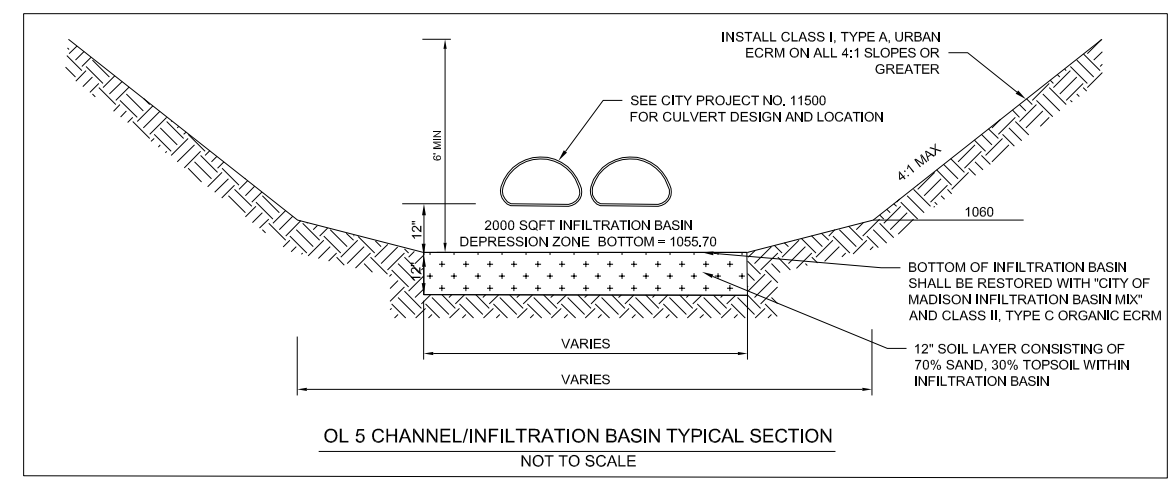
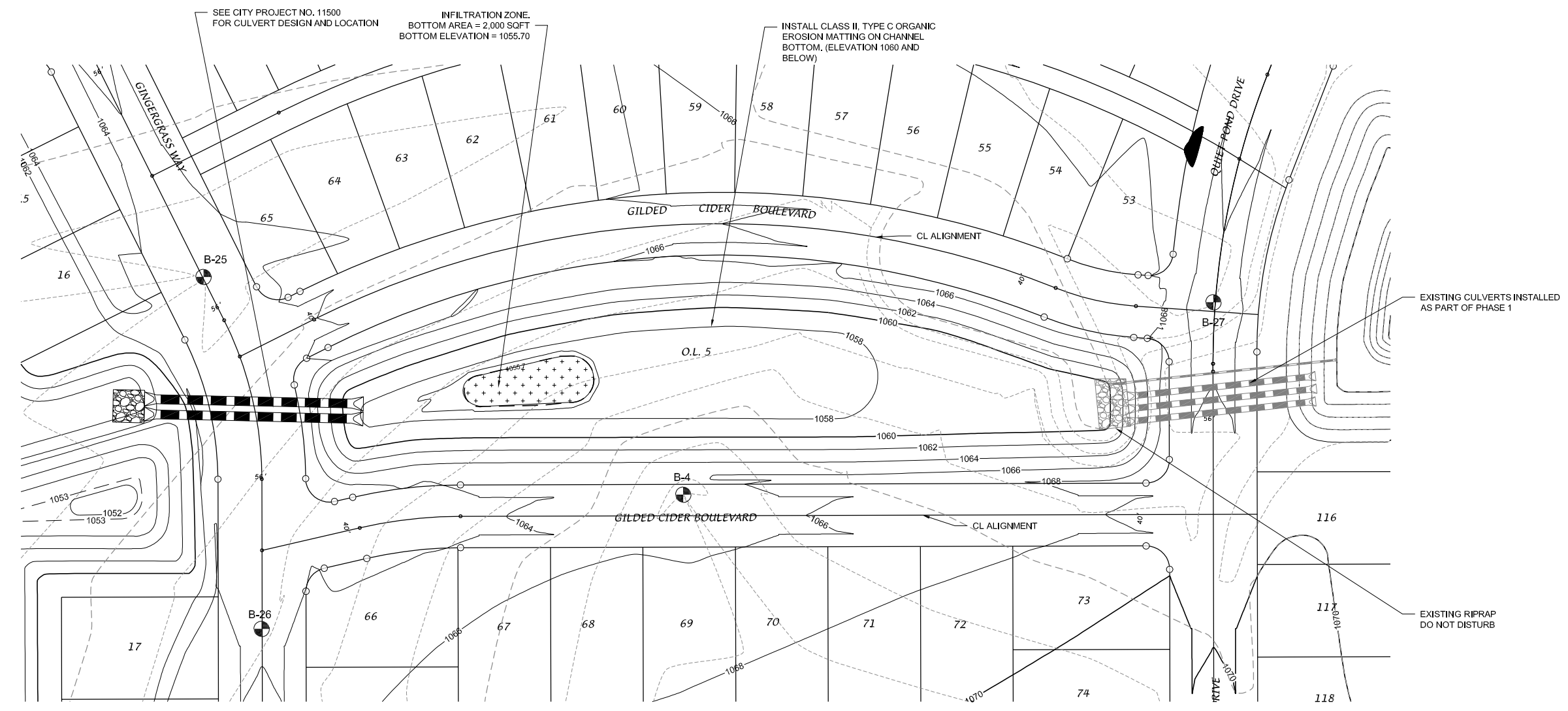
DATE: 03/23/17
 REVISED:



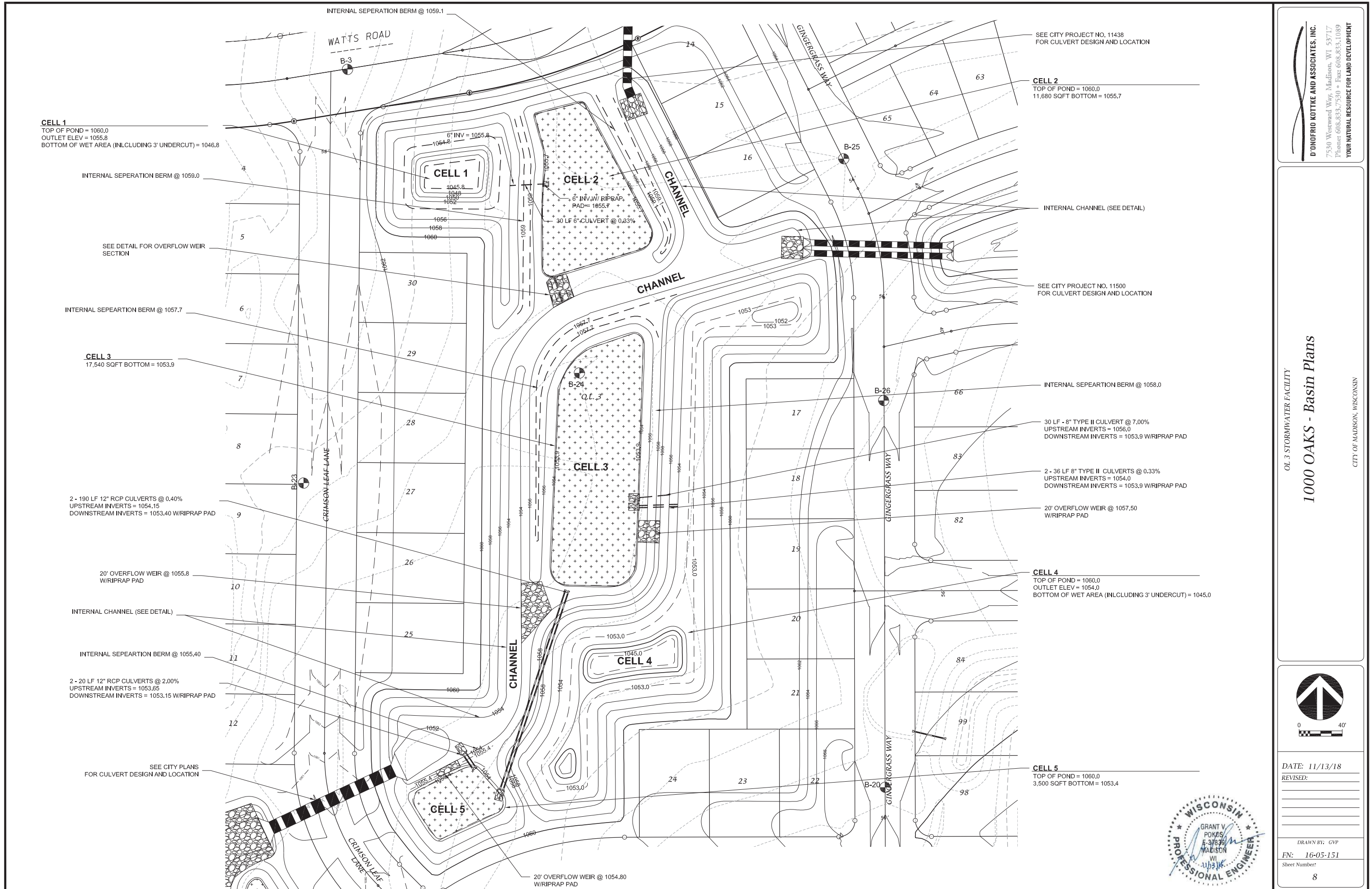
DRAWN BY: GVP
 FN: 16-05-151
 Sheet Number:
 6

OL 5 CHANNEL/INFILTRATION BASIN
1000 OAKS - Basin Plans

CITY OF MADISON, WISCONSIN



DATE: 03/23/17
 REVISED:
 DRAWN BY: GVP
 FN: 16-05-151
 Sheet Number:
 7



CELL 1
 TOP OF POND = 1060.0
 OUTLET ELEV = 1055.8
 BOTTOM OF WET AREA (INCLUDING 3' UNDERCUT) = 1046.8

SEE CITY PROJECT NO. 11438
 FOR CULVERT DESIGN AND LOCATION

CELL 2
 TOP OF POND = 1060.0
 11,680 SQFT BOTTOM = 1055.7

INTERNAL CHANNEL (SEE DETAIL)

SEE CITY PROJECT NO. 11500
 FOR CULVERT DESIGN AND LOCATION

CELL 3
 17,540 SQFT BOTTOM = 1053.9

INTERNAL SEPEARITION BERM @ 1058.0

30 LF - 8" TYPE II CULVERT @ 7.00%
 UPSTREAM INVERTS = 1056.0
 DOWNSTREAM INVERTS = 1053.9 W/RIPRAP PAD

2 - 36 LF 8" TYPE II CULVERTS @ 0.33%
 UPSTREAM INVERTS = 1054.0
 DOWNSTREAM INVERTS = 1053.9 W/RIPRAP PAD

20' OVERFLOW WEIR @ 1057.50
 W/RIPRAP PAD

CELL 4
 TOP OF POND = 1060.0
 OUTLET ELEV = 1054.0
 BOTTOM OF WET AREA (INCLUDING 3' UNDERCUT) = 1045.0

2 - 190 LF 12" RCP CULVERTS @ 0.40%
 UPSTREAM INVERTS = 1054.15
 DOWNSTREAM INVERTS = 1053.40 W/RIPRAP PAD

20' OVERFLOW WEIR @ 1055.8
 W/RIPRAP PAD

2 - 20 LF 12" RCP CULVERTS @ 2.00%
 UPSTREAM INVERTS = 1053.65
 DOWNSTREAM INVERTS = 1053.15 W/RIPRAP PAD

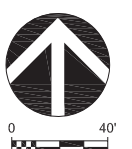
CELL 5
 TOP OF POND = 1060.0
 3,500 SQFT BOTTOM = 1053.4

SEE CITY PLANS
 FOR CULVERT DESIGN AND LOCATION

OL 3 STORMWATER FACILITY

1000 OAKS - Basin Plans

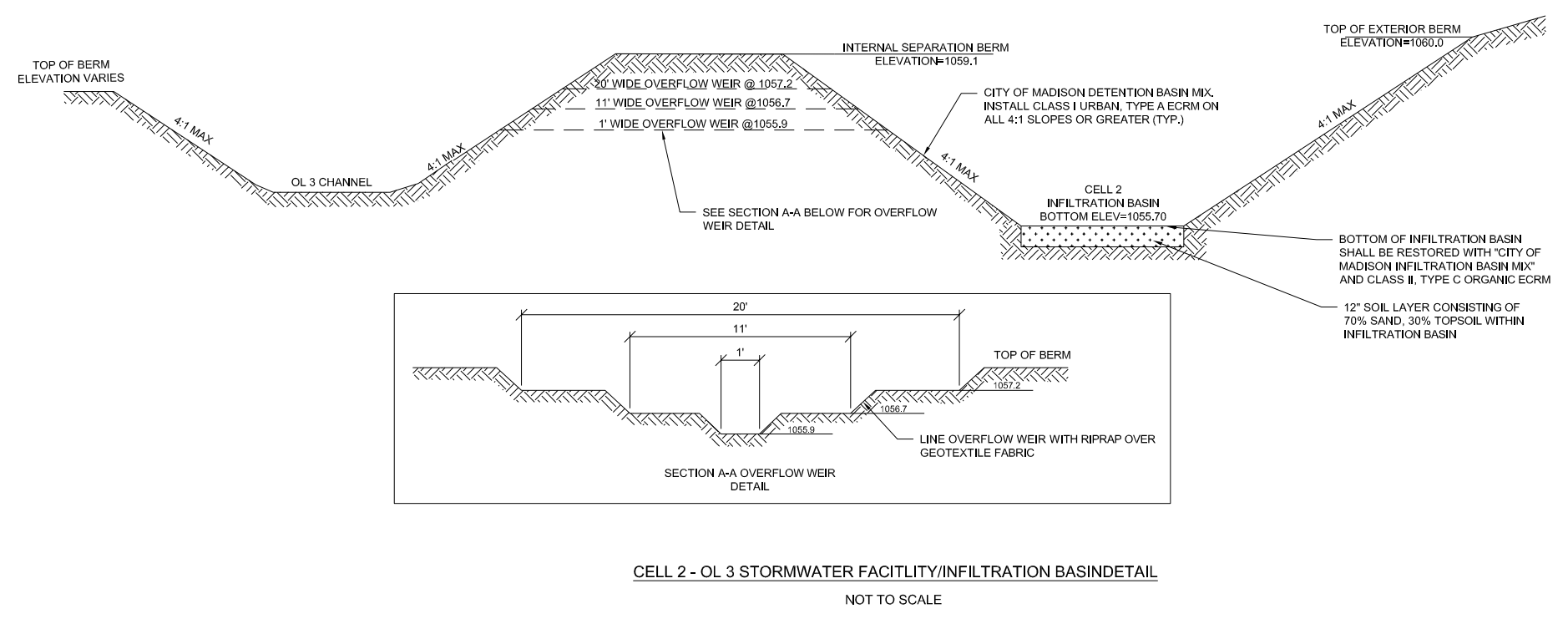
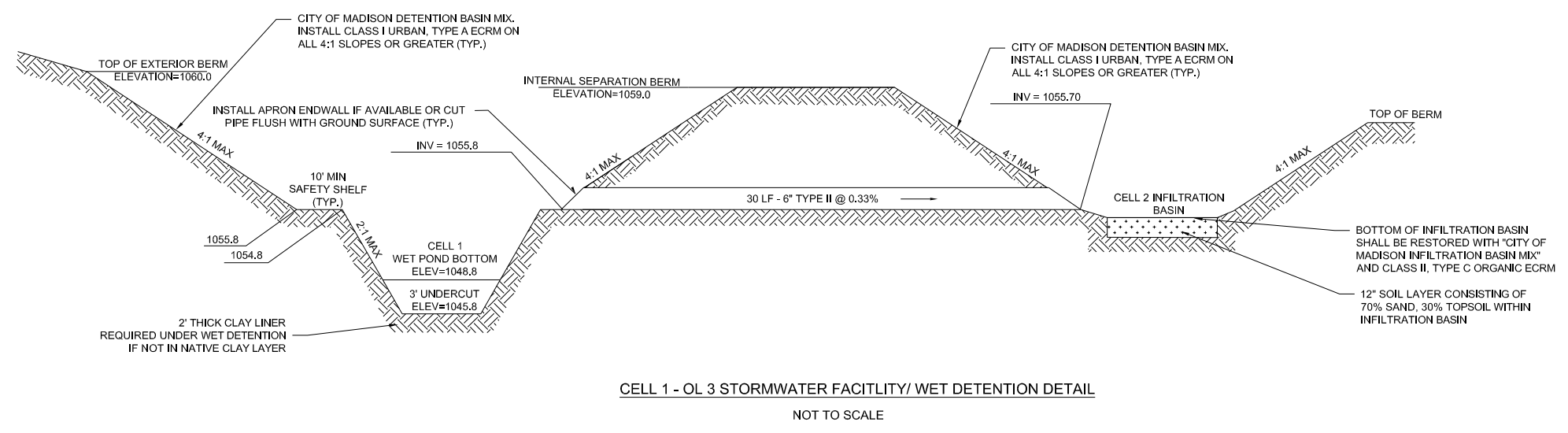
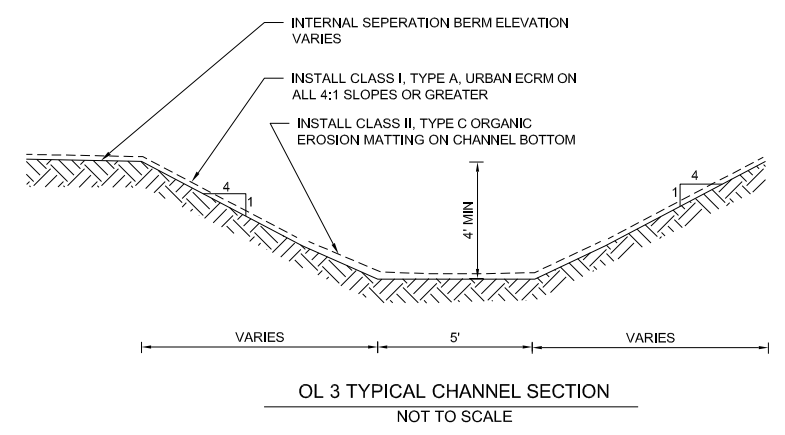
CITY OF MADISON, WISCONSIN



DATE: 11/13/18
 REVISED:

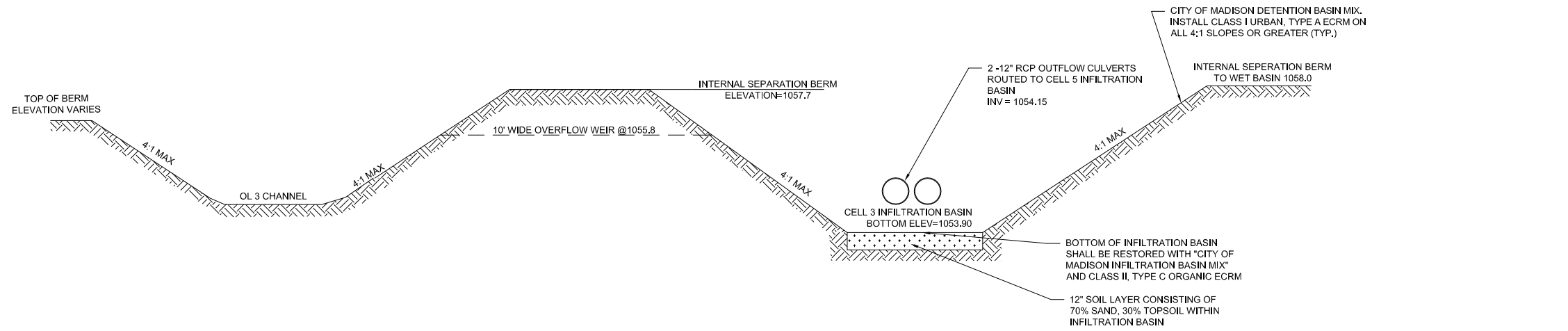
DRAWN BY: GVP
 FN: 16-05-151
 Sheet Number:





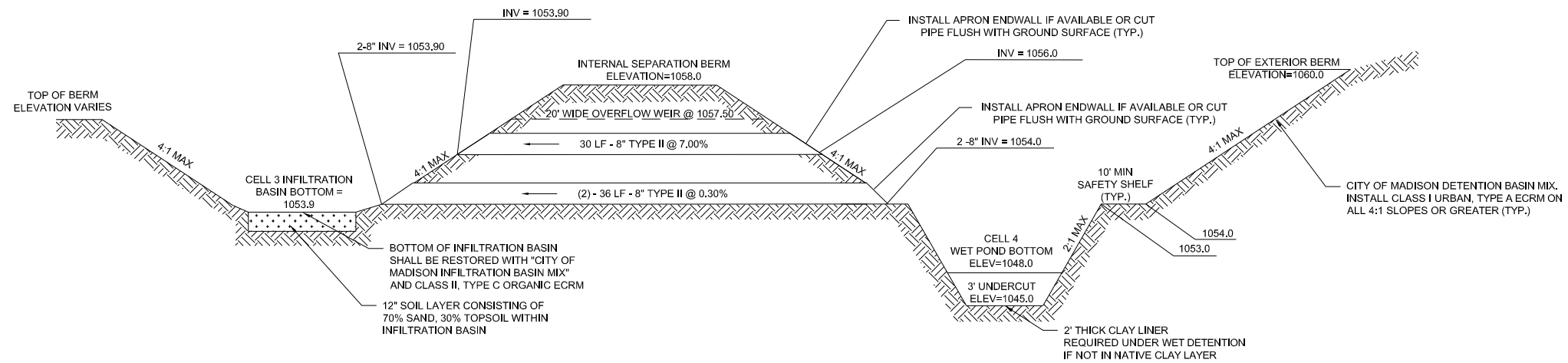
DATE: 03/23/17
 REVISED:

 DRAWN BY: GVP
 FN: 16-05-151
 Sheet Number:
 9



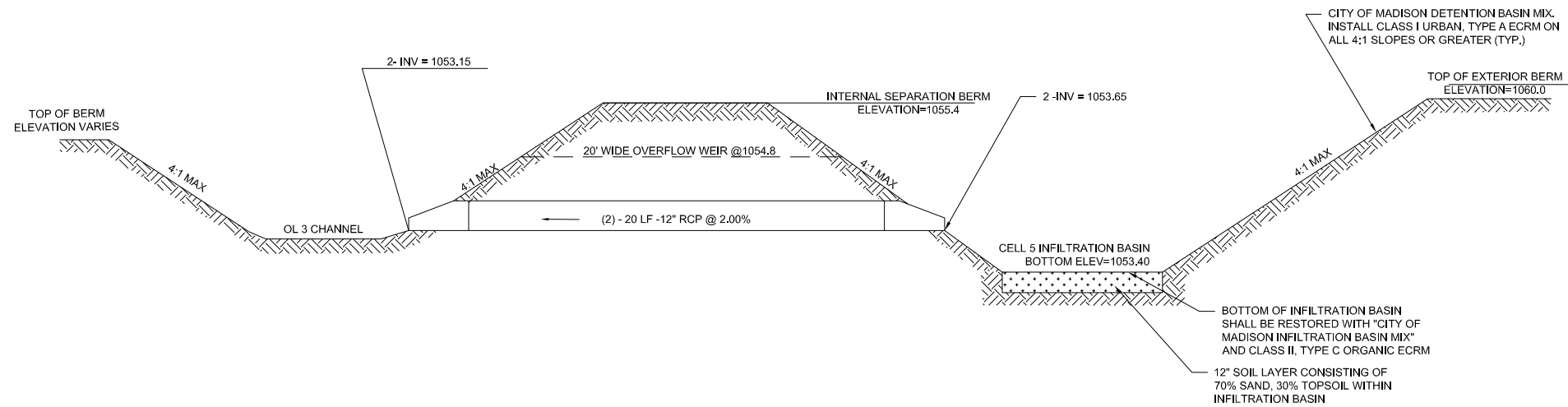
CELL 3 - OL 3 STORMWATER FACILITY/INFILTRATION BASIN DETAIL

NOT TO SCALE



CELL 4 - OL 3 STORMWATER FACILITY/ WET DETENTION DETAIL

NOT TO SCALE



CELL 5 - OL 3 STORMWATER FACILITY/INFILTRATION BASIN DETAIL

NOT TO SCALE



OUTLOT 3 STORMWATER FACILITY - DETAILS
1000 OAKS - Basin Plans

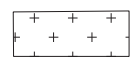
CITY OF MADISON, WISCONSIN

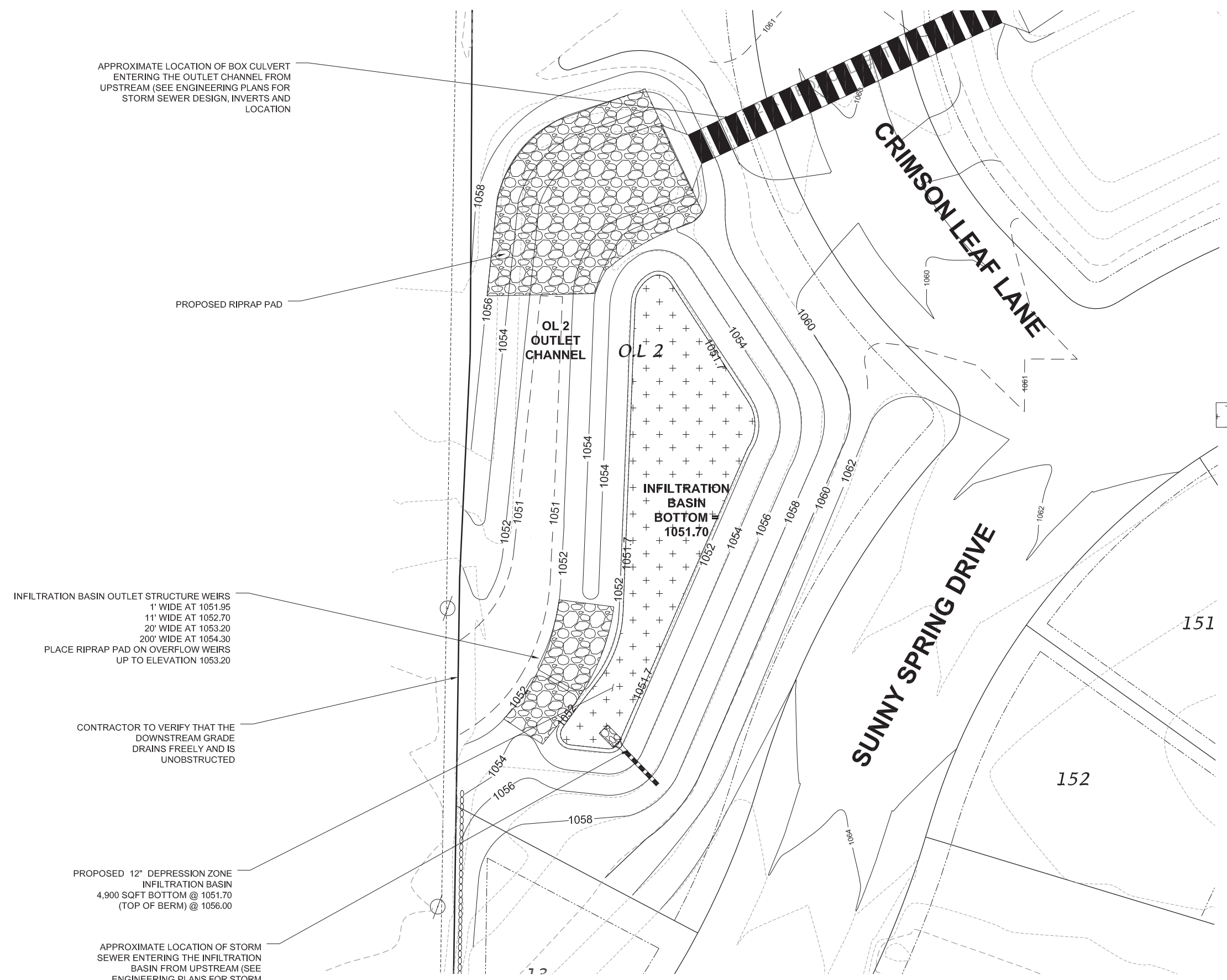
D'ONOFRIO KOTTKE AND ASSOCIATES, INC.
 7530 Westward Way, Madison, WI 53717
 Phone: 608.833.7530 • Fax: 608.833.1089
 YOUR NATURAL RESOURCE FOR LAND DEVELOPMENT

DATE: 03/23/17
 REVISED:

 DRAWN BY: GVP
 FN: 16-05-151
 Sheet Number:
 10

- GENERAL NOTES:
1. ALL SITE WORK AND MATERIALS SHALL BE PER THE CITY OF MADISON STANDARD SPECIFICATIONS.
 2. EROSION CONTROL MEASURES SHALL BE PLACED PER THE APPROVED EROSION CONTROL PLAN.
 3. ALL DISTURBED AREAS SHALL RECEIVE A MINIMUM OF 6" OF TOPSOIL, FERTILIZER, SEED AND MULCH. SEED MIXTURE SHALL BE WISCONSIN DOT SEED MIX #40 OR EQUIVALENT APPLIED AT A RATE OF 5 POUNDS PER 100 SQFT ON ALL DISTURBED AREAS. ANNUAL RYEGRASS AT A RATE OF 1 1/2 POUNDS PER 1000 SQFT SHALL BE ADDED TO THE MIXTURE. FERTILIZER SHALL BE PLACED PER A SOIL TEST. THE INFILTRATION AREA SHALL BE SEEDED WITH A SEED MIX TOLERANT OF FLUCTUATING WATER CONDITIONS.
 4. ENGINEERED SOIL IN INFILTRATION BASIN SHALL BE 70-85% SAND & 15-30% COMPOST
 5. SEE APPROVED ENGINEERING PLANS FOR SITE STORM SEWER TYPE, LENGTHS, AND SIZES

 HATCH INDICATES INFILTRATION BASIN BOTTOM AREA. THIS AREA SHALL BE SEEDED WITH A NATIVE SEED MIX TOLERANT OF FLUCTUATING WATER CONDITIONS.



APPROXIMATE LOCATION OF BOX CULVERT ENTERING THE OUTLET CHANNEL FROM UPSTREAM (SEE ENGINEERING PLANS FOR STORM SEWER DESIGN, INVERTS AND LOCATION)

PROPOSED RIPRAP PAD

INFILTRATION BASIN OUTLET STRUCTURE WEIRS
 1' WIDE AT 1051.95
 11' WIDE AT 1052.70
 20' WIDE AT 1053.20
 200' WIDE AT 1054.30
 PLACE RIPRAP PAD ON OVERFLOW WEIRS UP TO ELEVATION 1053.20

CONTRACTOR TO VERIFY THAT THE DOWNSTREAM GRADE DRAINS FREELY AND IS UNOBSTRUCTED

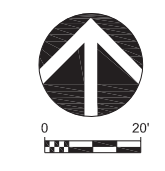
PROPOSED 12" DEPRESSION ZONE INFILTRATION BASIN
 4,900 SQFT BOTTOM @ 1051.70
 (TOP OF BERM) @ 1056.00

APPROXIMATE LOCATION OF STORM SEWER ENTERING THE INFILTRATION BASIN FROM UPSTREAM (SEE ENGINEERING PLANS FOR STORM SEWER DESIGN, INVERTS AND LOCATION)

PLAN VIEW

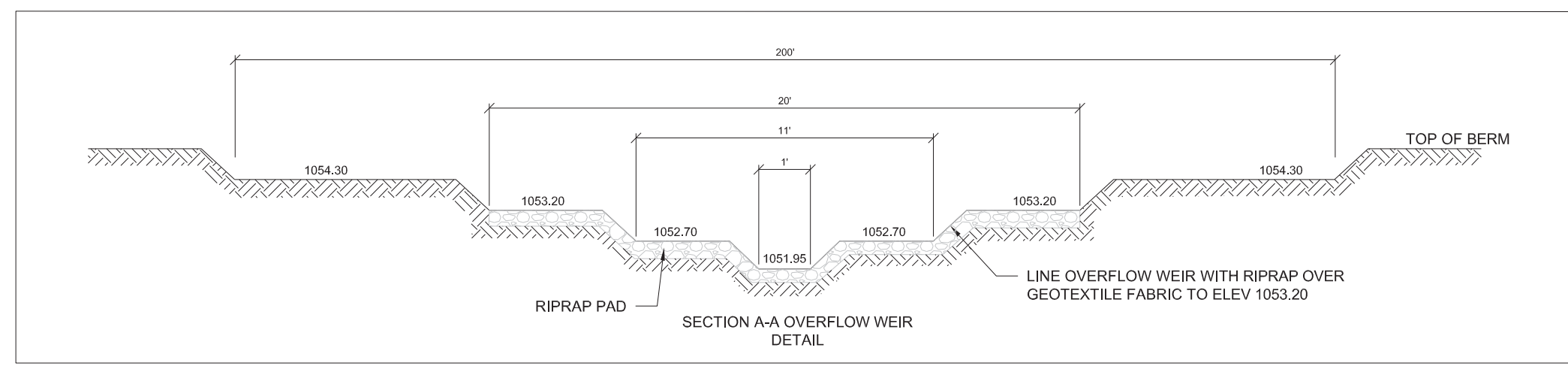
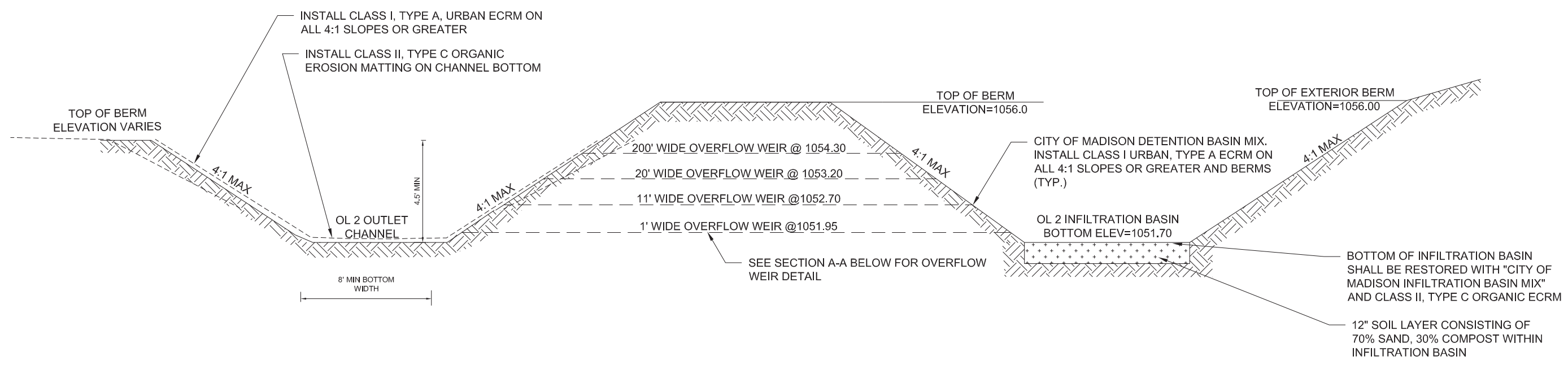
OL 2 - INFILTRATION BASIN AND OUTLET CHANNEL DETAIL

NOT TO SCALE



DATE: 11/13/18
 REVISED:

DRAWN BY: GVP
 FN: 18-05-117
 Sheet Number:

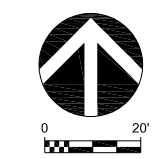


OL 2- INFILTRATION BASIN AND OUTLET CHANNEL DETAIL
 NOT TO SCALE



DATE: 010/10/18
 REVISED:

 DRAWN BY: GVP
 FN: 18-05-117
 Sheet Number:



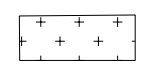
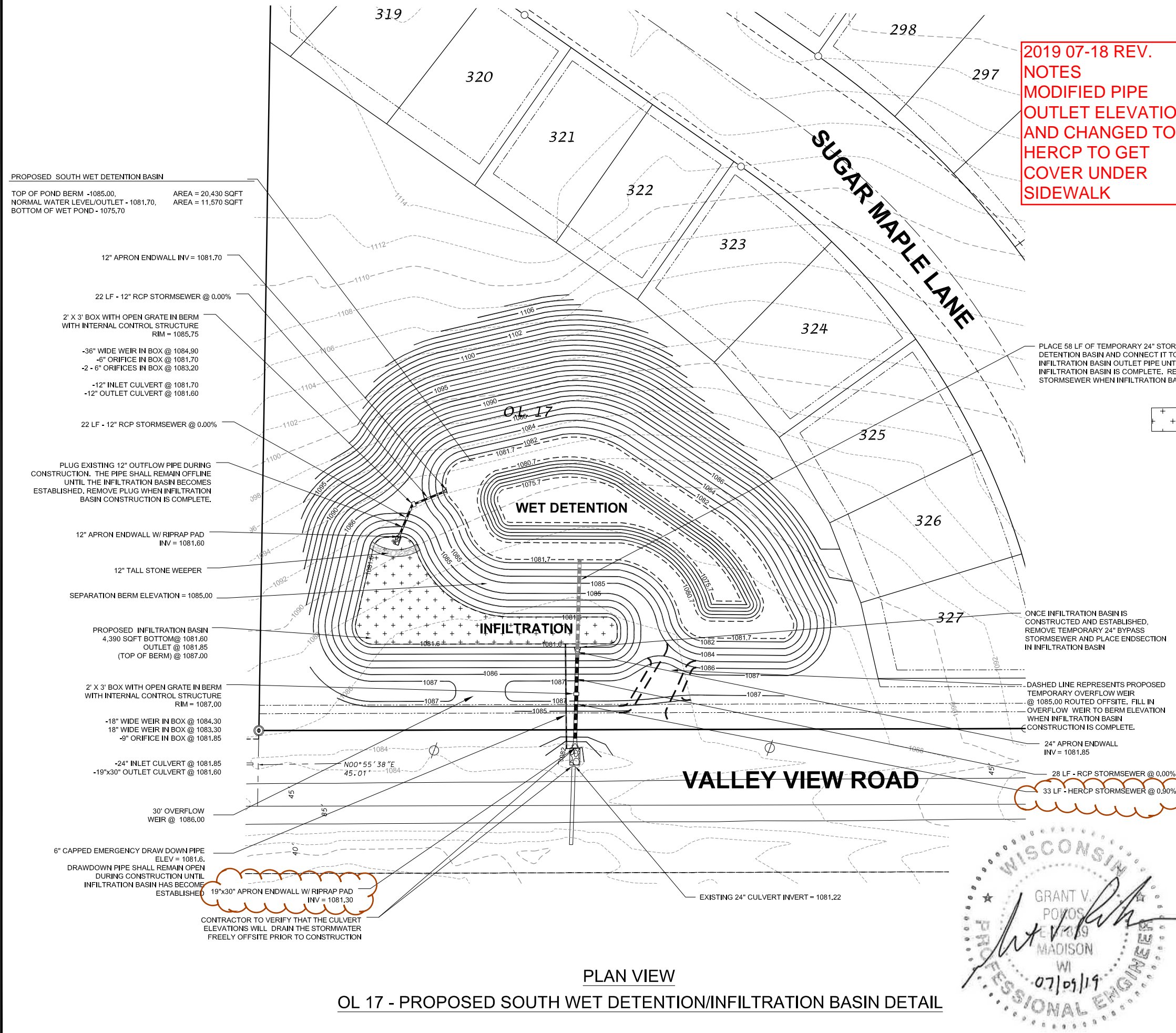
DATE: 07/09/19
 REVISED:

 DRAWN BY: GVP
 FN: 18-05-117
 Sheet Number:
 13

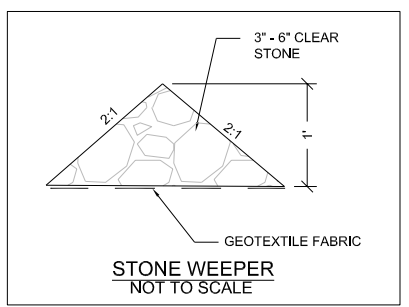
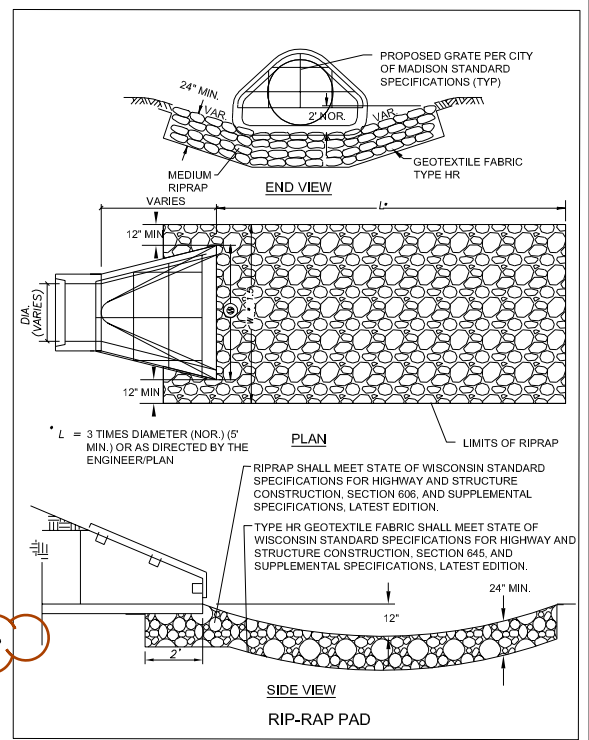
GENERAL NOTES:

- ALL SITE WORK AND MATERIALS SHALL BE PER THE CITY OF MADISON STANDARD SPECIFICATIONS.
- EROSION CONTROL MEASURES SHALL BE PLACED PER THE APPROVED EROSION CONTROL PLAN.
- LENGTHS OF CULVERTS INCLUDE ENDWALLS.
- CULVERT LENGTHS SHALL BE FIELD VERIFIED DURING CONSTRUCTION TO ENSURE THAT THEY ARE LONG ENOUGH TO CONFORM TO TYPICAL CROSS SECTION.
- ALL DISTURBED AREAS SHALL RECEIVE A MINIMUM OF 6" OF TOPSOIL, FERTILIZER, SEED AND MULCH. SEEDING IN THE OUTLET SHALL BE PER THE CITY OF MADISON REQUIREMENTS. THE INFILTRATION AREA SHALL BE SEEDED WITH A SEED MIX TOLERANT OF FLUCTUATING WATER CONDITIONS.
- 6. ENGINEERED SOIL IN INFILTRATION BASIN SHALL BE 70-85% SAND & 15-30% COMPOST
- 7. SEE APPROVED ENGINEERING PLANS FOR SITE STORM SEWER TYPE, LENGTHS, AND SIZES

2019 07-18 REV. NOTES
MODIFIED PIPE OUTLET ELEVATION AND CHANGED TO HERCP TO GET COVER UNDER SIDEWALK

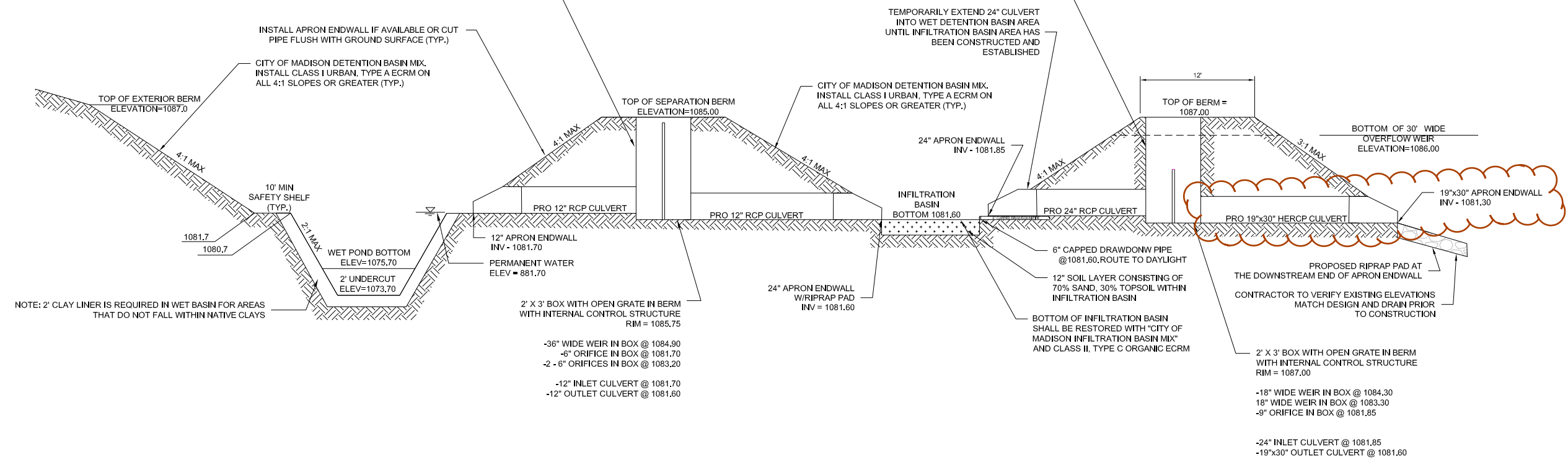
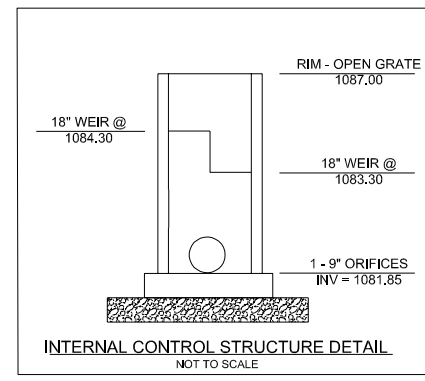
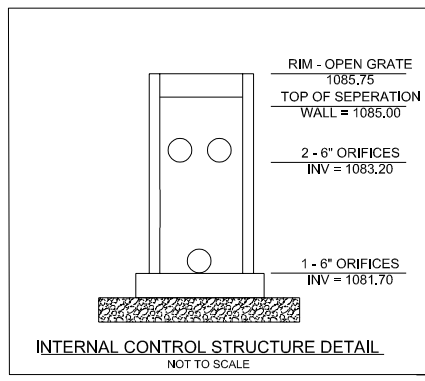


HATCH INDICATES INFILTRATION BASIN BOTTOM AREA. THIS AREA SHALL BE SEEDED WITH A NATIVE SEED MIX TOLERANT OF FLUCTUATING WATER CONDITIONS.



PLAN VIEW
OL 17 - PROPOSED SOUTH WET DETENTION/INFILTRATION BASIN DETAIL

**2019 07-18 REV.
 NOTES
 MODIFIED PIPE
 OUTLET ELEVATION
 AND CHANGED TO
 HERCP TO GET
 COVER UNDER
 SIDEWALK**



PROFILE VIEW
OL 17 - PROPOSED SOUTH WET DETENTION/INFILTRATION BASIN DETAIL
 NOT TO SCALE



DATE: 07/09/19
 REVISIONS:

 DRAWN BY: GVP
 FN: 18-05-117
 Sheet Number:
 14