



Madison, Wisconsin

# CITY OF MADISON

## CITY ENGINEERING DIVISION

### DEPARTMENT OF PUBLIC WORKS

# PLAN OF PROPOSED IMPROVEMENT

#### INDEX OF SHEETS

SHEET NO.	NOTES AND DETAILS
D1-D2	NOTES AND DETAILS
P1-P2	SIDEWALK PLAN & PROFILES
U1-U2	UTILITY PLAN & PROFILES
USAN	SANITARY SEWER SCHEDULE
W1-W2	WATER LATERALS PLANS
MN1	MAINTENANCE MAP

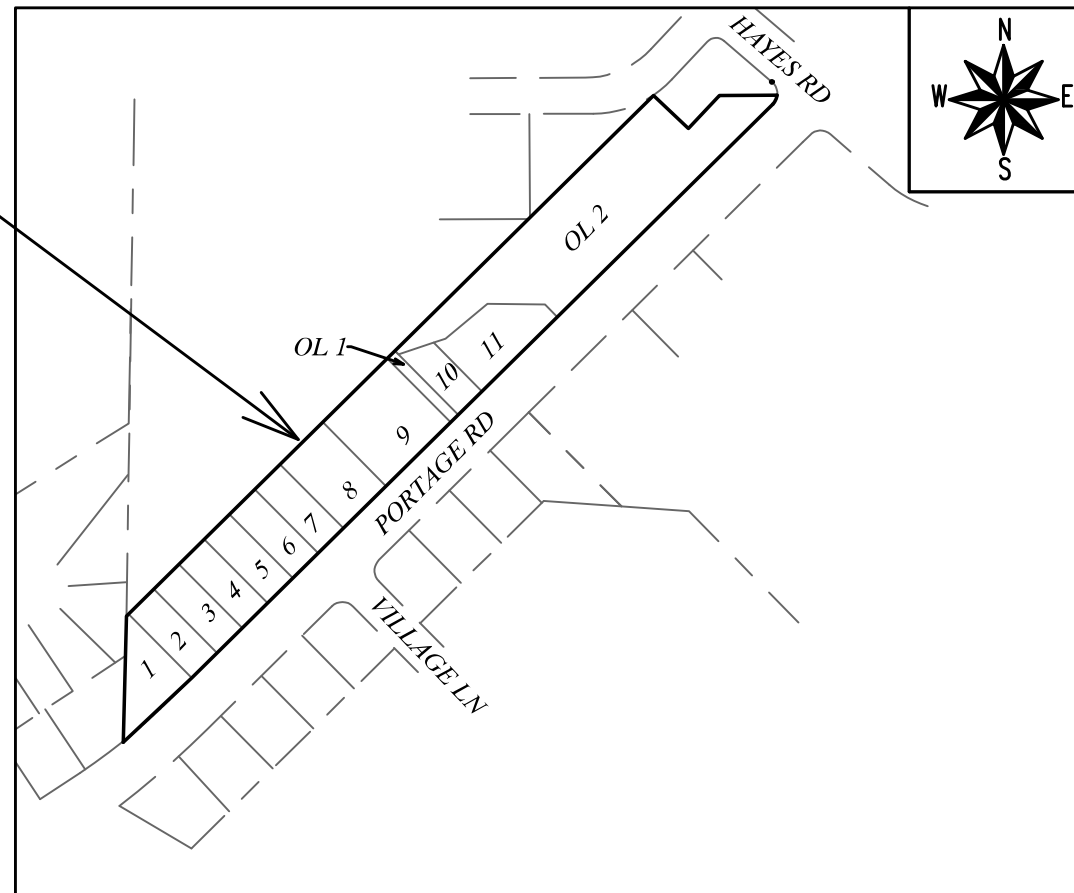
## VANG HOMESITES

CITY PROJECT NO. 11920

CONTRACT NO. 8270

MUNIS NO. 11920

PROJECT LOCATION



PUBLIC IMPROVEMENT PROJECT APPROVED

DECEMBER 3, 2019

BY THE COMMON COUNCIL OF MADISON, WISCONSIN

PUBLIC IMPROVEMENT DESIGN APPROVED BY:

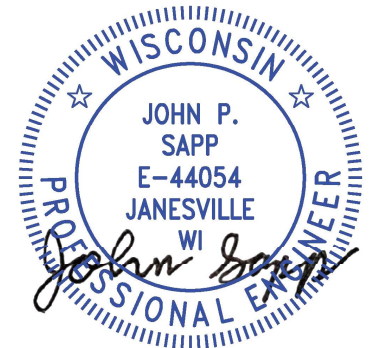
*Greg Fries*

Aug 13, 2020

City Engineer

Date

SIDEWALK DESIGNED BY:



Aug 14, 2020

SANITARY SEWER DESIGNED BY:



Aug 13, 2020

WATER DESIGNED BY:

NO PUBLIC WATER MAIN

LATERALS PLAN ONLY

PLOT SCALE: 1 IN:1 FT\_XREF

PLOT NAME: ---

REV. DATE: 6/11/2020 9:08 AM

ORIGINATOR: CITY\_OF\_MADISON

THE LOCATION AND INFORMATION FOR PROPOSED NEW TREES, IN THE PUBLIC RIGHT OF WAY OR ON PUBLIC LANDS ARE APPROXIMATE AND ARE SHOWN FOR REFERENCE ONLY. THE LOCATIONS, SPECIFICATIONS AND PLANTING METHODS OF ALL PROPOSED NEW OR REPLACEMENT TREES IN THE PUBLIC RIGHT OF WAY OR ON PUBLIC LANDS SHALL BE APPROVED BY THE CITY FORESTER PRIOR TO INSTALLATION.

NO TREES IN THE RIGHT OF WAY OR ON PUBLIC LANDS SHALL BE TRIMMED, PRUNED, REMOVED OR ADVERSELY AFFECTED IN ANY WAY UNTIL THE DEVELOPER HAS RECEIVED WRITTEN PERMISSION FROM THE CITY ENGINEER OR CITY FORESTER. SAID WRITTEN PERMISSION SHALL INCLUDE LANGUAGE INDICATING THAT SECTION 10.101 OF THE MADISON GENERAL ORDINANCES AND ADMINISTRATIVE PROCEDURE MEMORANDUM NO. 6-2, REFERING TO NOTIFICATION OF PROPERTY OCCUPANTS AND/OR OWNERS, HAS BEEN COMPLIED WITH.

DEVELOPER MUST SUBMIT A TRAFFIC CONTROL PLAN TO CITY TRAFFIC ENGINEERING AT LEAST 14 DAYS PRIOR TO THE START OF WORK. WORK SHALL NOT PROCEED UNTIL AN APPROVED TRAFFIC CONTROL PLAN IS IN PLACE

ALL PAVEMENT IN THE PORTAGE ROAD RIGHT-OF-WAY SHALL BE TYPE C PAVEMENT PER STANDARD DETAIL DRAWING 4.02.

UNDERDRAINS SHALL BE INSTALLED PER STANDARD DETAIL DRAWING 4.05 FOR 75' ON EACH SIDE OF THE LOW POINT, OR TO THE NEAREST CURB HIGH POINT. ALL UNDERDRAIN SHALL BE WRAPPED.

ALL GUTTERS SHALL DRAIN WITH A MINIMUM GRADE OF 0.5% TOWARD STORM SEWER INLETS.

ALL DITCHES SHALL DRAIN WITH A MINIMUM GRADE OF 0.5%

THE CROSS SLOPE OF SIDEWALKS AND BARRIER FREE SIDEWALK CURB RAMPS SHALL TYPICALLY BE 1.5%. THE LONGITUDINAL GRADE OF BARRIER FREE SIDEWALK CURB RAMPS SHALL NOT EXCEED 8.33%. ALL SIDEWALK RAMPS SHALL BE CONSTRUCTED ACCORDING TO S.D.D. 3.04. AT ALL OTHER LOCATIONS THE LONGITUDINAL GRADE OF SIDEWALKS SHALL NOT EXCEED 5.0 % OR THE ADJACENT STREET GRADE WHICHEVER IS GREATER NOR BE LESS THAN 0.5% AND SHALL DRAIN TOWARD STORM SEWER INLETS. SIDE SLOPES WITHIN TEN FEET OF A PUBLIC SIDEWALK SHALL NOT EXCEED 4:1. ALL SIDEWALK AND SIDEWALK RAMP ELEVATIONS AND GRADES SHALL BE FIELD VERIFIED AND SET TO COMPLY WITH THE CITY OF MADISON STANDARD SPECIFICATIONS AND THE A.D.A. GUIDELINES.

OBTAIN A PRINT OUT OF THE ALIGNMENTS FROM THE CITY PROJECT ENGINEER PRIOR TO STAKING THIS PROJECT.

CURB STATION AND OFFSETS SHALL BE TO THE **EDGE OF PAVEMENT** UNLESS OTHERWISE INDICATED. CURB ELEVATIONS SHALL BE TO THE **EDGE OF PAVEMENT** UNLESS OTHERWISE INDICATED.

POWER POLES AND OTHER OBSTRUCTIONS SHALL BE MOVED TO PROVIDE 2 FEET MINIMUM OF CLEAR DISTANCE FROM ANY FACE OF CURB OR EDGE OF SIDEWALK.

ANY INFORMATION SHOWN ON THIS PLAN, WHICH IS NOT PART OF THIS RIGHT-OF-WAY PROJECT, IS PRELIMINARY AND NOT FOR CONSTRUCTION.

THERE MAY BE EXISTING UTILITIES OR OTHER FEATURES WHICH ARE EITHER NOT SHOWN OR SHOWN INCORRECTLY ON THIS PLAN. IT IS THE RESPONSIBILITY OF THE DEVELOPER TO LOCATE AND IDENTIFY ALL UTILITIES AND TOPOGRAPHY WHICH MAY AFFECT THE CONSTRUCTION OF THESE IMPROVEMENTS.

ALL PERMANENT SIGNING AND POSTING WILL BE DETERMINED AND PROVIDED BY THE TRAFFIC ENGINEERING DIVISION, FOLLOWING CONSTRUCTION OF THESE IMPROVEMENTS.

THE DEVELOPER SHALL PROVIDE, INSTALL AND MAINTAIN ALL STREET END BARRICADES, SIGNING AND TRAFFIC CONTROL, AS REQUIRED BY THE CITY TRAFFIC ENGINEER.

PAVEMENT SAWCUTS SHALL BE AS DIRECTED BY THE CITY CONSTRUCTION ENGINEER. SAWCUTS SHOWN ON THE PLAN ARE APPROXIMATE.

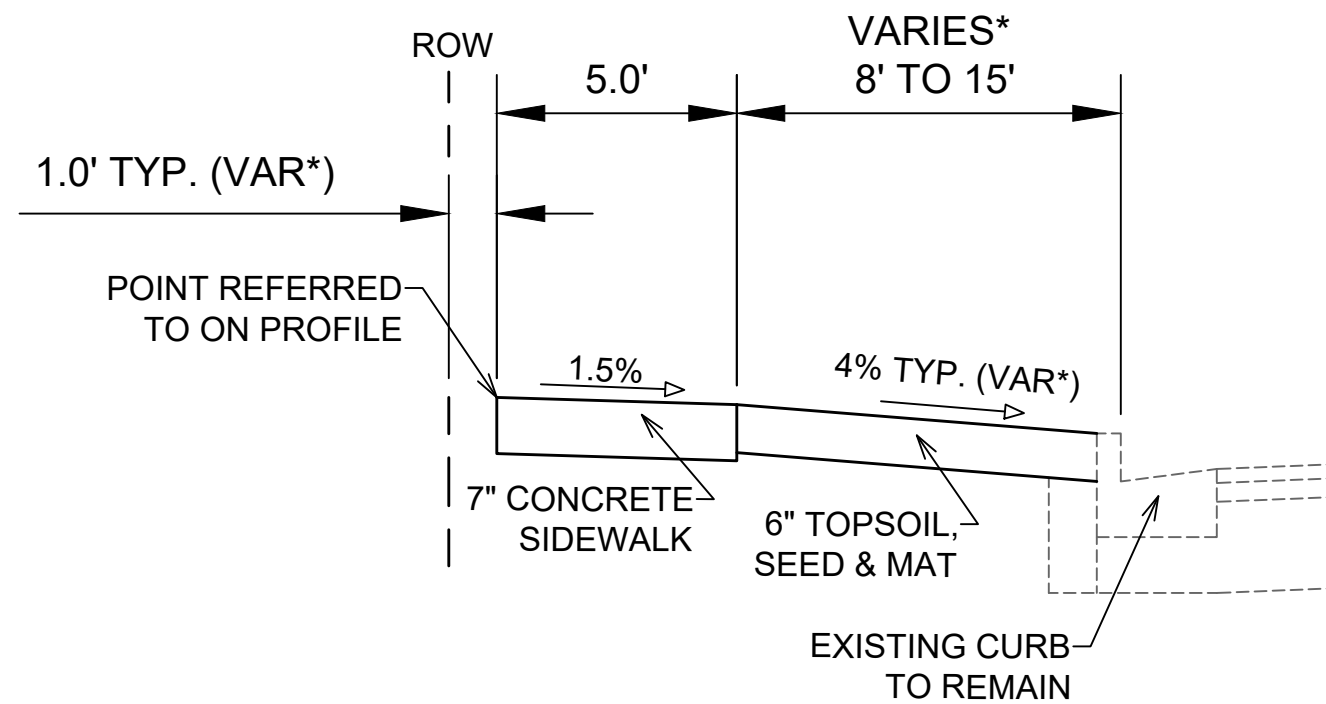
CURB ON CUL DE SACS SHALL BE INSTALLED ACCORDING TO S.D.D 3.05.

ALL WORK IN THE RIGHT OF WAY AND PUBLIC EASEMENTS SHALL BE IN ACCORDANCE WITH THE CITY OF MADISON STANDARD SPECIFICATIONS FOR PUBLIC WORKS CONSTRUCTION

CONVENTIONAL SIGNS	
FIELD VERIFY ALL UTILITY LOCATIONS	
GAS	— G —
STORM SEWER	— ST —
SANITARY SEWER	— SAN —
WATER	— W —
BURIED ELECTRIC	— E —
OVERHEAD ELECTRIC	— OH —
POWER POLE	
ADA COMPLIANT RAMP W/ DETECTABLE WARNING FIELD	
COMBUSTIBLE FLUIDS	



STANDARD NOTES AND COMMENTS	11920	DATE	BY
	MADISON, WI	REVISION	Scale: #####
VANG HOMESITES	8270	Designd By: AJC	Date: 6/27/2020 3:42 PM
M:\DESIGN\Projects\11920\C3D\Streets\11920EN-TitleSheet.dwg	CONTRACT NO:	11920	D-1
	11920		
	D-1		



## TYPICAL SECTION PORTAGE RD SIDEWALK

**NOTES:**

- PORTAGE ROAD SHALL BE CONSTRUCTED AS TYPE 'C' PAVEMENT PER CITY OF MADISON MINIMUM PAVEMENT DESIGN†

\* SEE PLAN AND PROFILE FOR SLOPES, ELEVATIONS AND OFFSETS

CITY OF MADISON MINIMUM PAVEMENT DESIGN†

TYPE	CRUSHED AGGREGATE BASE COURSE		ASPHALTIC CONCRETE PAVEMENT			
	LOWER LAYER GRADATION 1	UPPER LAYER GRADATION 2	LOWER LAYER		UPPER LAYER	
			TYPE	THICKNESS	TYPE	THICKNESS
A	6"	6"	4 LT 58-28 S	1.75"	4 LT 58-28 S	1.75"
B	6"	6"	3 LT 58-28 S	2.50"	4 LT 58-28 S	2.00"
C	6"	6"	3 MT 58-28 S/H	3.50"	4 MT 58-28 S/H	2.00"

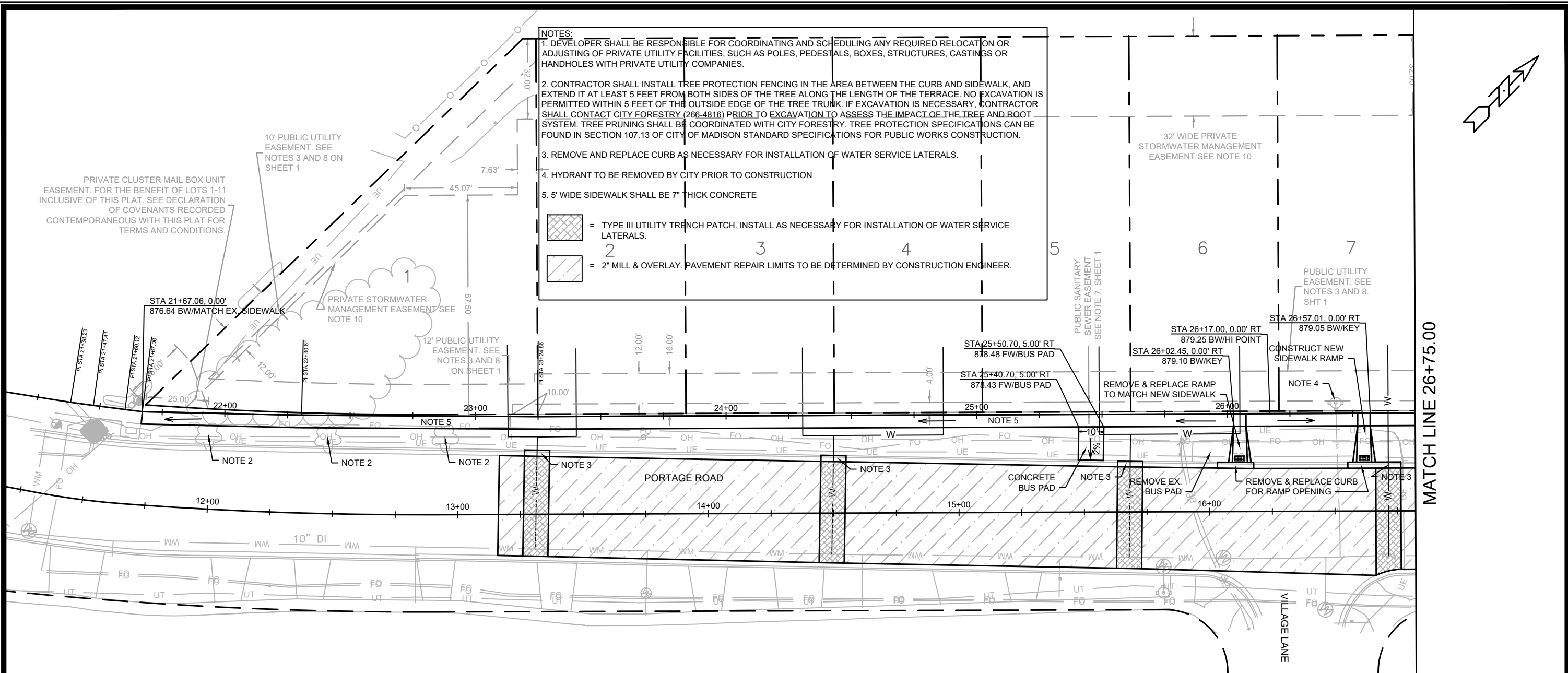
11920  
 MADISON, WI  
 VANG HOMESITES  
 CONTRACT NO: 8270  
 M:\DESIGN\Projects\11920\CD\Streets\11920EN-TitleSheet.dwg



11920  
 D-2


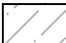
MARK	REVISION	DATE	BY
11920	11920	7/7/2020 1:53 PM	11920

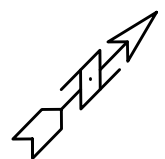
Scale: #####  
 D-2



**NOTES:**

1. DEVELOPER SHALL BE RESPONSIBLE FOR COORDINATING AND SCHEDULING ANY REQUIRED RELOCATION OR ADJUSTING OF PRIVATE UTILITY FACILITIES, SUCH AS POLES, PEDESTALS, BOXES, STRUCTURES, CASTINGS OR HANDHOLES WITH PRIVATE UTILITY COMPANIES.
2. CONTRACTOR SHALL INSTALL TREE PROTECTION FENCING IN THE AREA BETWEEN THE CURB AND SIDEWALK, AND EXTEND IT AT LEAST 5 FEET FROM BOTH SIDES OF THE TREE ALONG THE LENGTH OF THE TERRACE. NO EXCAVATION IS PERMITTED WITHIN 5 FEET OF THE OUTSIDE EDGE OF THE TREE TRUNK. IF EXCAVATION IS NECESSARY, CONTRACTOR SHALL CONTACT CITY FORESTRY (266-4816) PRIOR TO EXCAVATION TO ASSESS THE IMPACT OF THE TREE AND ROOT SYSTEM. TREE PRUNING SHALL BE COORDINATED WITH CITY FORESTRY. TREE PROTECTION SPECIFICATIONS CAN BE FOUND IN SECTION 107.13 OF CITY OF MADISON STANDARD SPECIFICATIONS FOR PUBLIC WORKS CONSTRUCTION.
3. REMOVE AND REPLACE CURB AS NECESSARY FOR INSTALLATION OF WATER SERVICE LATERALS.
4. HYDRANT TO BE REMOVED BY CITY PRIOR TO CONSTRUCTION
5. 5' WIDE SIDEWALK SHALL BE 7" THICK CONCRETE

 = TYPE III UTILITY TRENCH PATCH. INSTALL AS NECESSARY FOR INSTALLATION OF WATER SERVICE LATERALS.  
 = 2" MILL & OVERLAY. PAVEMENT REPAIR LIMITS TO BE DETERMINED BY CONSTRUCTION ENGINEER.



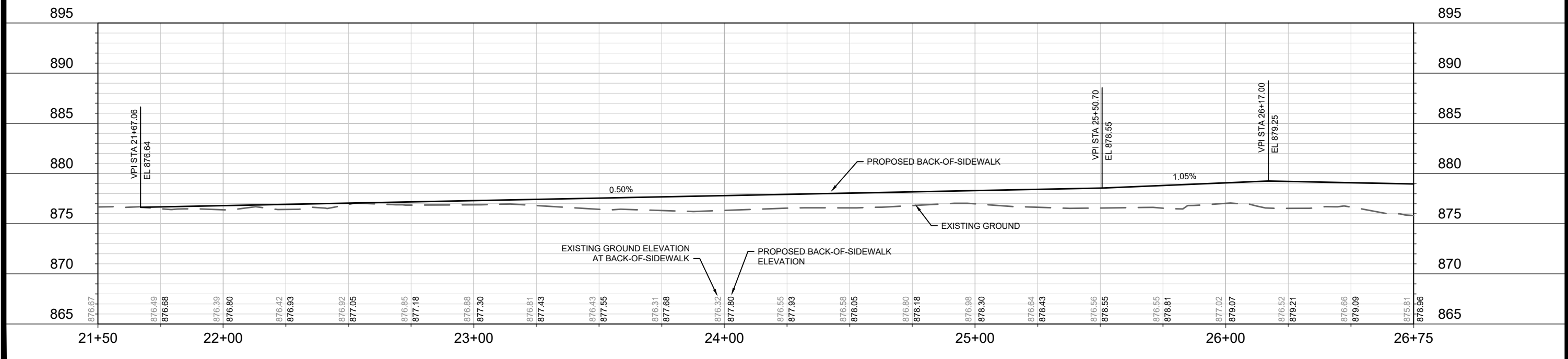
DATE	BY
REVISION	
DESIGNED BY: AJC	DATE: 8/7/2020 1:26 PM
MARK	11920
SCALE	1" = 40'
PAGE	P-1

11920  
MADISON, WI  
8270  
CONTRACT NO:

PORTAGE RD SIDEWALK - PLAN & PROFILE  
VANG HOMESITES  
M:\DESIGN\Projects\11920\C3D\Streets\11920EN-Street\PrPs.dwg





11920  
P-1

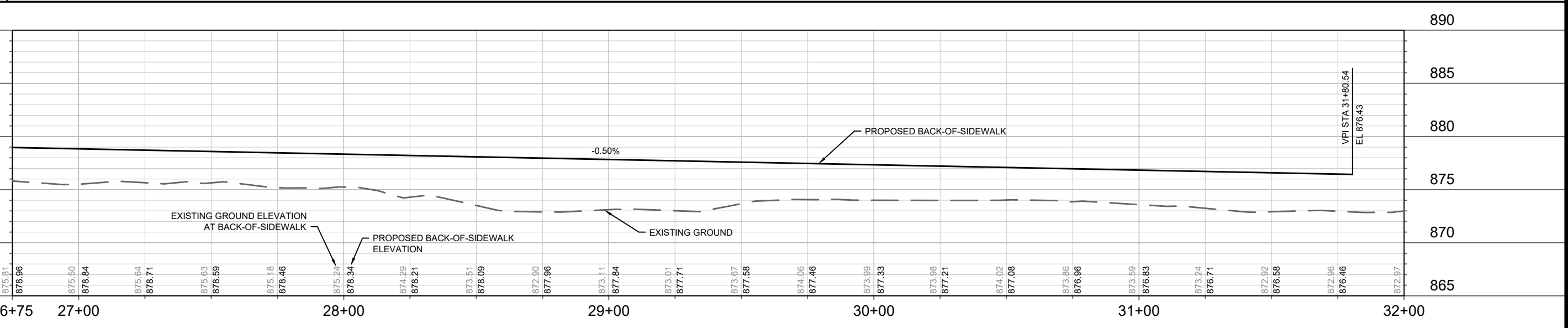
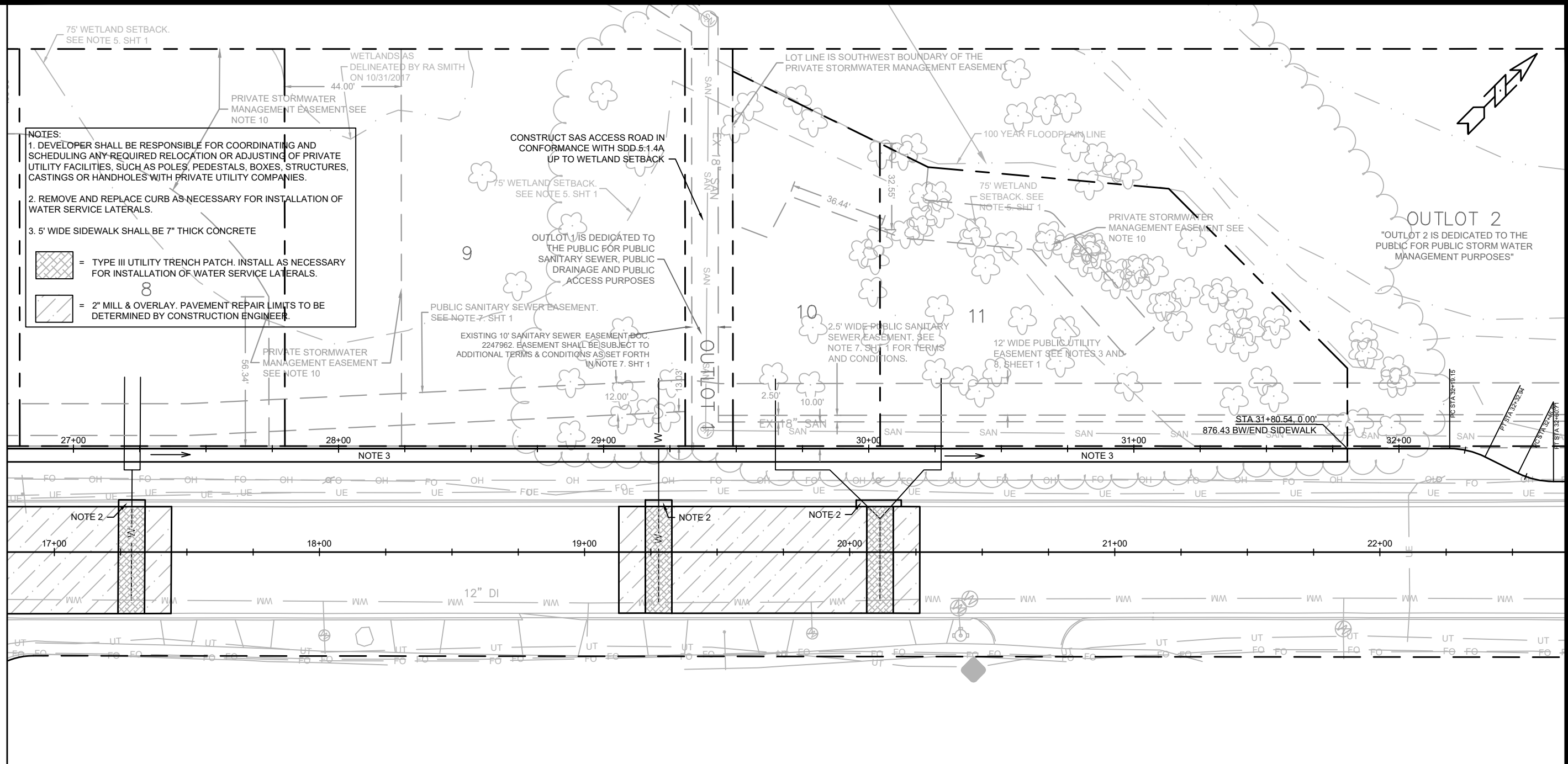


MATCH LINE 26+75.00

**NOTES:**

1. DEVELOPER SHALL BE RESPONSIBLE FOR COORDINATING AND SCHEDULING ANY REQUIRED RELOCATION OR ADJUSTING OF PRIVATE UTILITY FACILITIES, SUCH AS POLES, PEDESTALS, BOXES, STRUCTURES, CASTINGS OR HANDHOLES WITH PRIVATE UTILITY COMPANIES.
2. REMOVE AND REPLACE CURB AS NECESSARY FOR INSTALLATION OF WATER SERVICE LATERALS.
3. 5' WIDE SIDEWALK SHALL BE 7" THICK CONCRETE

 = TYPE III UTILITY TRENCH PATCH. INSTALL AS NECESSARY FOR INSTALLATION OF WATER SERVICE LATERALS.  
 = 2" MILL & OVERLAY. PAVEMENT REPAIR LIMITS TO BE DETERMINED BY CONSTRUCTION ENGINEER.



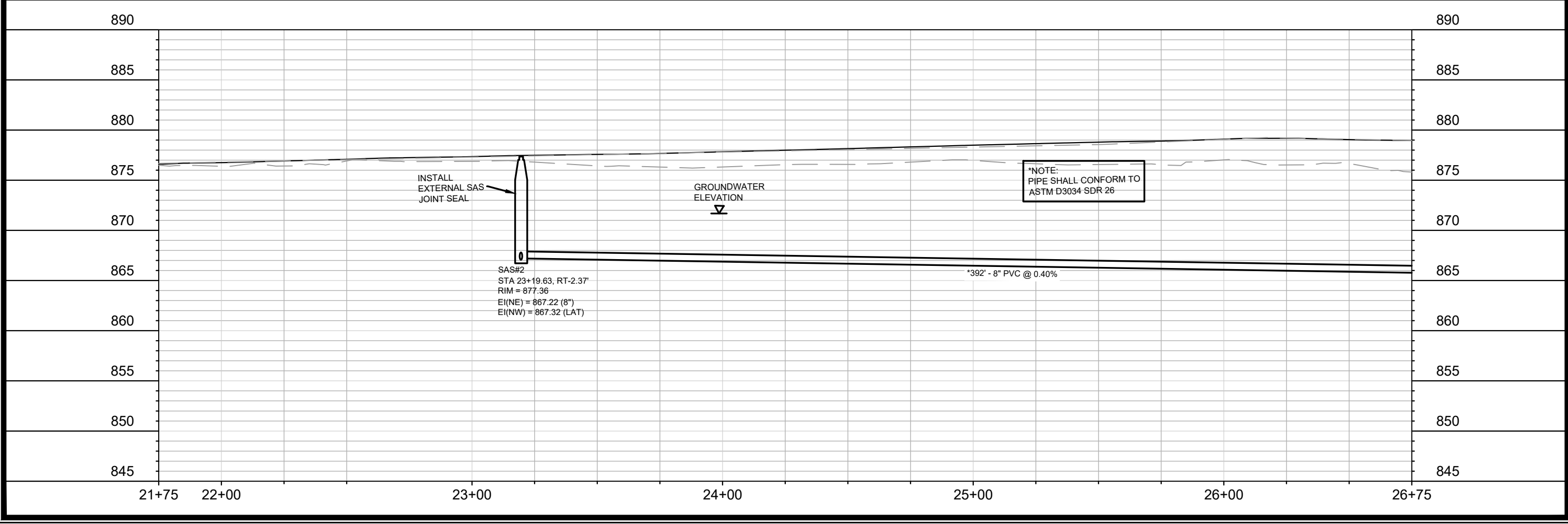
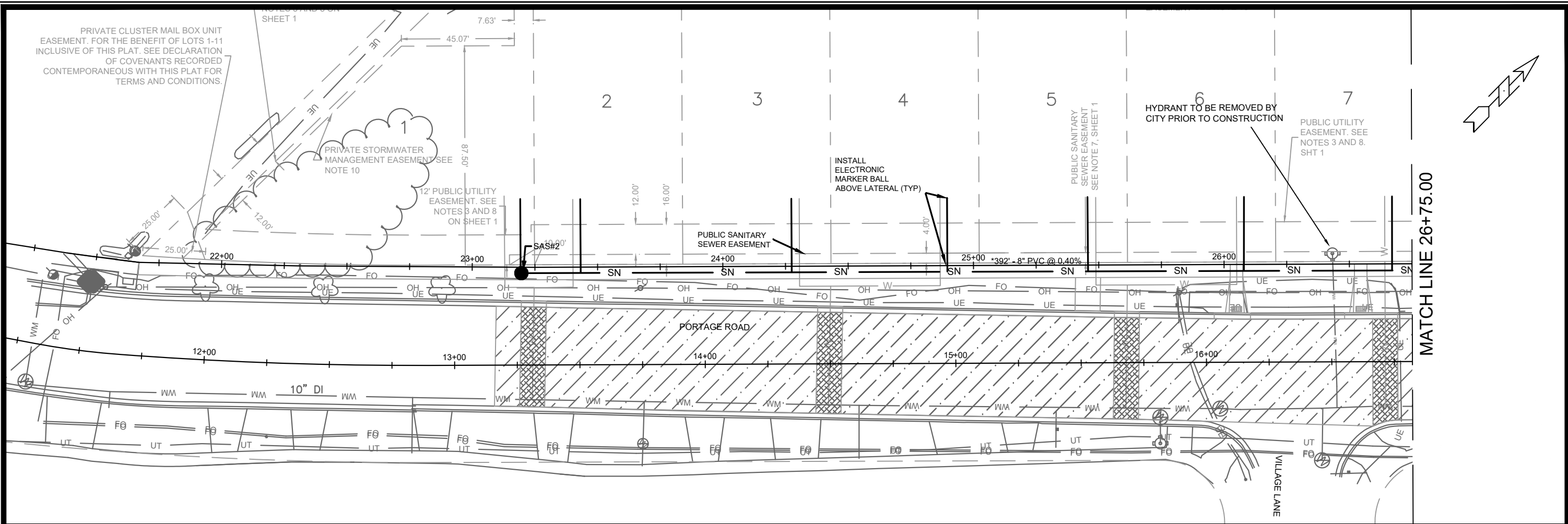
DATE	BY
REVISION	
DESIGNED BY: AJC	DATE: 07/2020 1:26 PM
MARK	11920
	P-2

11920  
MADISON, WI  
8270  
CONTRACT NO:

PORTAGE RD SIDEWALK - PLAN & PROFILE  
VANG HOMESITES  
M:\DESIGN\Projects\11920\C3D\Streets\11920EN-Street\PrPs.dwg



11920  
P-2



MARK	REVISION	DATE	BY	Scale: 1" = 40'						U-1
11920	11920	8/7/2020 3:58 PM								U-1
<b>11920</b>										
<b>MADISON, WI</b>										
<b>8270</b>										
<b>CONTRACT NO:</b>										
<b>11920</b>										
<b>U-1</b>										

11920

MADISON, WI

8270

CONTRACT NO:

11920

MADISON, WI

8270

CONTRACT NO:

11920

MADISON, WI

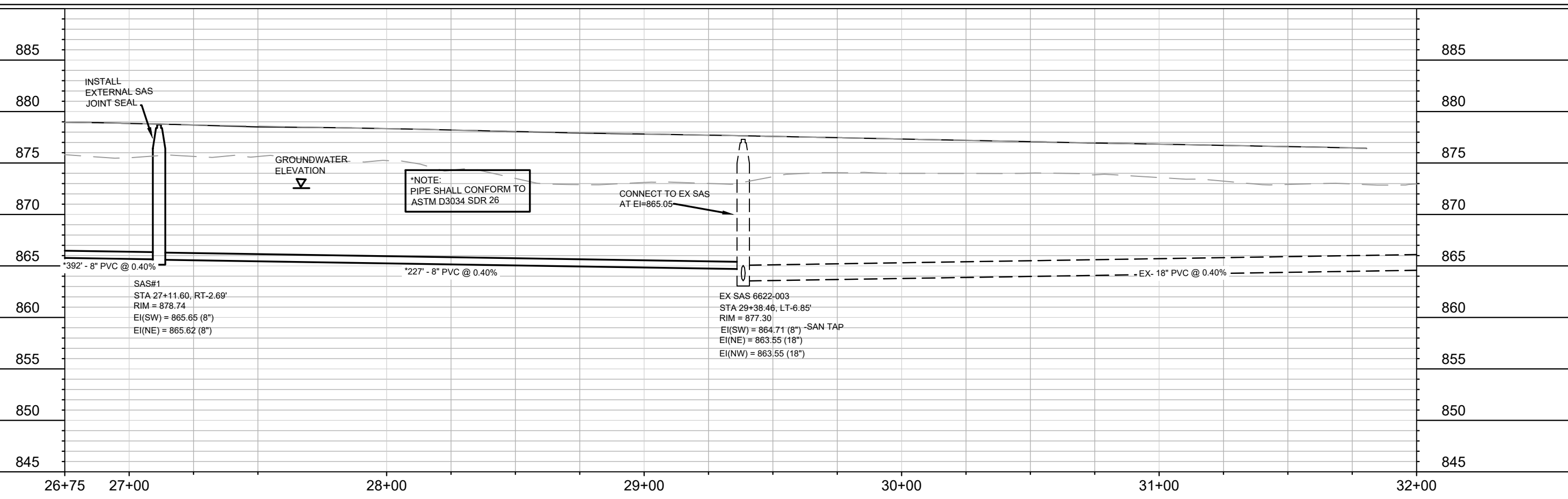
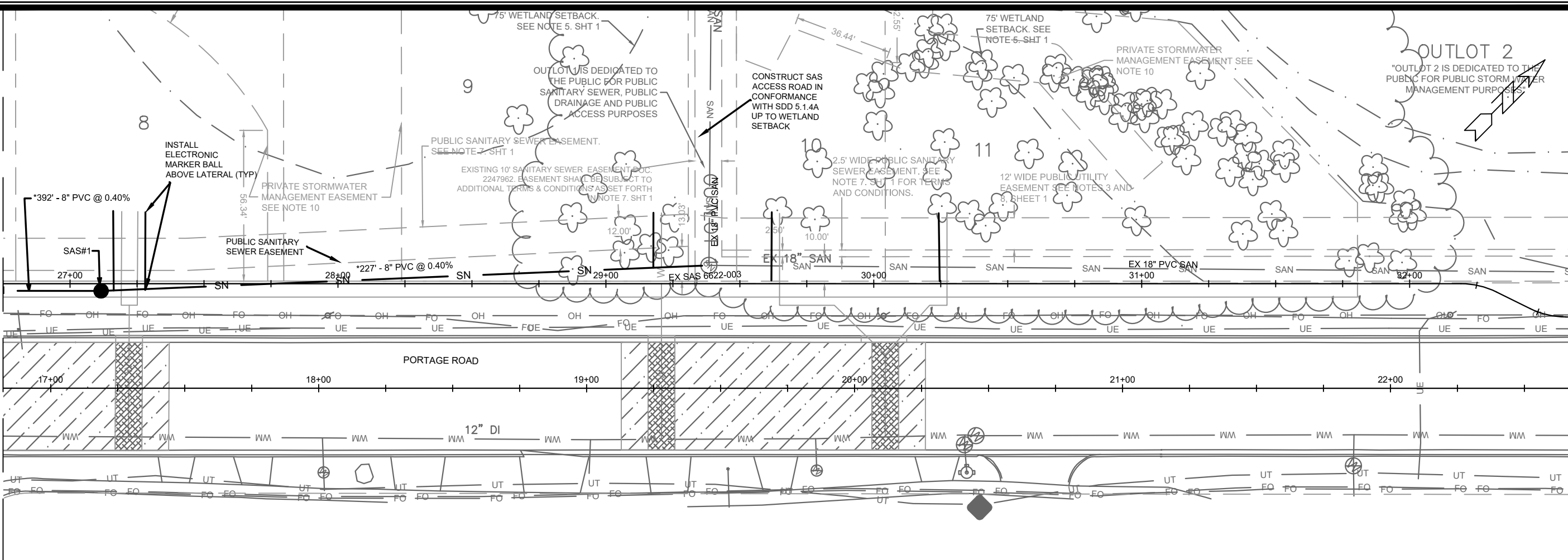
8270

CONTRACT NO:

**11920**

**U-1**

MATCH LINE 26+75.00



DATE	BY
REVISION	
MARK	
DESIGNED BY: EEA	DATE: 8/7/2020 3:58 PM
11920	U-2

11920  
MADISON, WI  
8270  
CONTRACT NO:

PORTAGE RD SANITARY SEWER  
VANG HOMESITES  
M:\DESIGN\Projects\11920\C3D\Sanitary\11920\VangSewers.dwg



11920  
U-2

# SANITARY SEWER SCHEDULE

VANG HOMESITES  
PROJECT NO. 11920

SHEET NO.  
U-SAN

SANITARY SEWER SCHEDULE

CITY OF MADISON

## PROPOSED SANITARY

SAS NO.	STATION	LOCATION (OFFSET)	TOP OF CASTING	E.I.	DEPTH (FT)	NOTES
---------	---------	-------------------	----------------	------	------------	-------

### PORTAGE RD

SAS#1	27+11.60	RT-2.69	878.74	865.62	13.12	(1)
SAS#2	23+19.63	RT-2.37	877.36	867.22	10.14	(1)

## PROPOSED SANITARY PIPES

FROM (DNSTM)	TO (UPSTM)	DWNSTRM E.I.	UPSTRM E.I.	PLAN LGTH (FT)	SLOPE (%)	PIPE SIZE	PVC TYPE	NOTES
EX SAS 6622-003	SAS#1	864.71	865.62	227	0.40%	8"	SDR-26	-
SAS#1	SAS#2	865.65	867.22	392	0.40%	8"	SDR-26	-

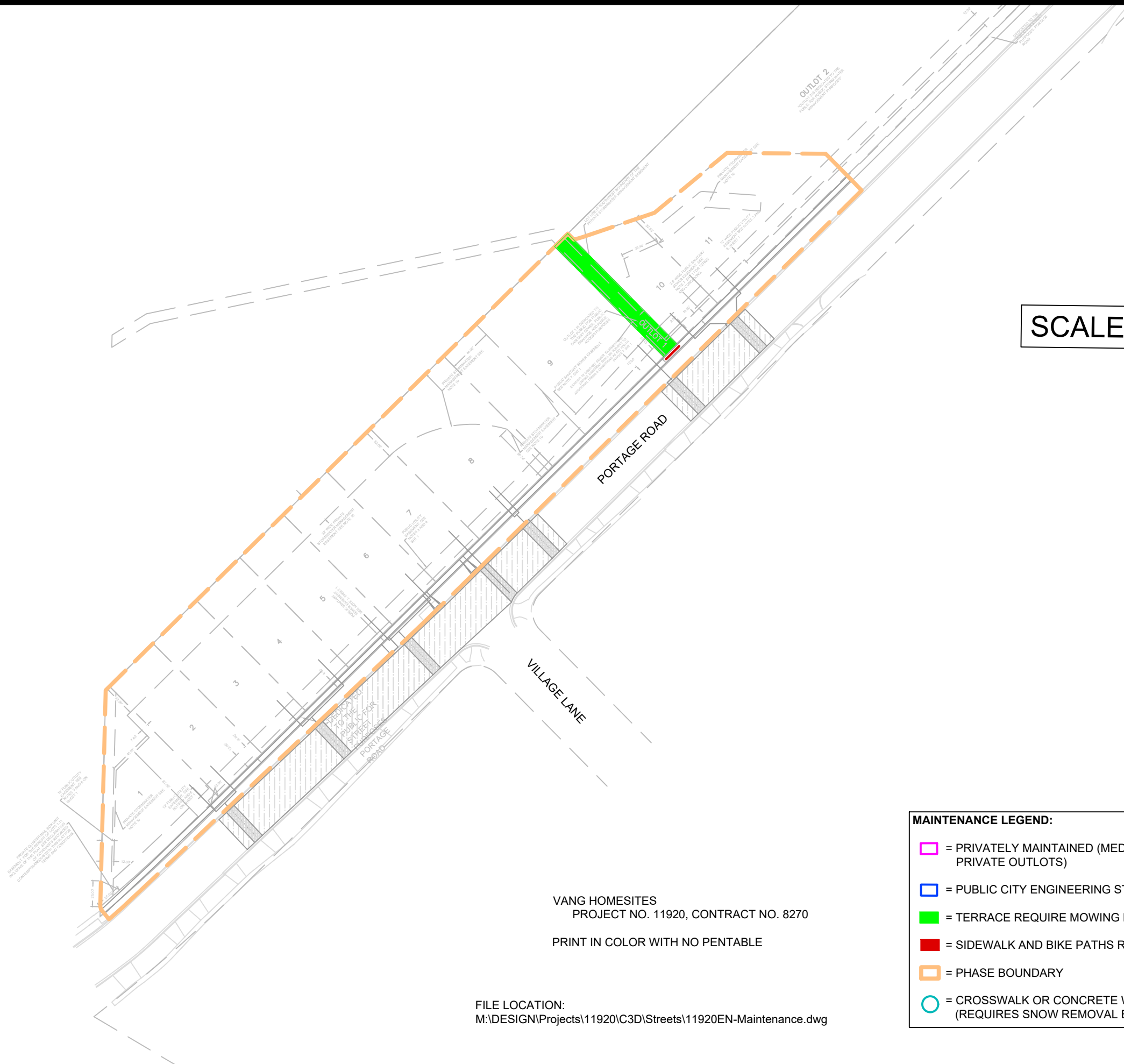
## NOTES:

(1) - INSTALL EXTERNAL SEWER ACCESS STRUCTURE JOINT SEAL IN ACCORDANCE WITH S.D.D. 5.7.2







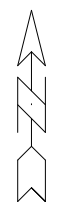


VANG HOMESITES  
 PROJECT NO. 11920, CONTRACT NO. 8270  
 PRINT IN COLOR WITH NO PENTABLE

FILE LOCATION:  
 M:\DESIGN\Projects\11920\C3D\Streets\11920EN-Maintenance.dwg

**MAINTENANCE LEGEND:**

- = PRIVATELY MAINTAINED (MEDIANS, ISLAND, ROUNDABOUTS & PRIVATE OUTLOTS)
- = PUBLIC CITY ENGINEERING STORMWATER PROPERTY
- = TERRACE REQUIRE MOWING BY CITY
- = SIDEWALK AND BIKE PATHS REQUIRE SNOW REMOVAL BY CITY
- = PHASE BOUNDARY
- = CROSSWALK OR CONCRETE WATERWAY MAINTAINED BY CITY (REQUIRES SNOW REMOVAL BY CITY)



MARK	REVISION	DATE	BY

11920  
 MADISON, WI  
 CONTRACT NO: 8270

MAINTENANCE MAP  
**VANG HOMESITES**  
 M:\DESIGN\Projects\11920\C3D\Streets\11920EN-Maintenance.dwg



11920  
 MN-1