

Madison, Wisconsin

CITY OF MADISON

CITY ENGINEERING DIVISION

DEPARTMENT OF PUBLIC WORKS

PLAN OF PROPOSED IMPROVEMENT

UNIVERSITY RESEARCH PARK - SCIENCE DRIVE SIDEWALK

CITY PROJECT NO. 12494

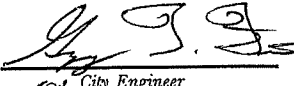
CONTRACT NO. 8442

PUBLIC IMPROVEMENT PROJECT APPROVED

JULY 2, 2019

BY THE COMMON COUNCIL
OF MADISON, WISCONSIN

PUBLIC IMPROVEMENT DESIGN
APPROVED BY:

 9/25/19
City Engineer Date

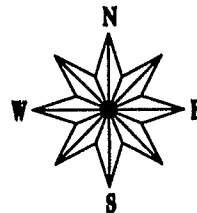
GEOMETRICS AND GRADING
DESIGNED BY:

BY
DEVELOPER

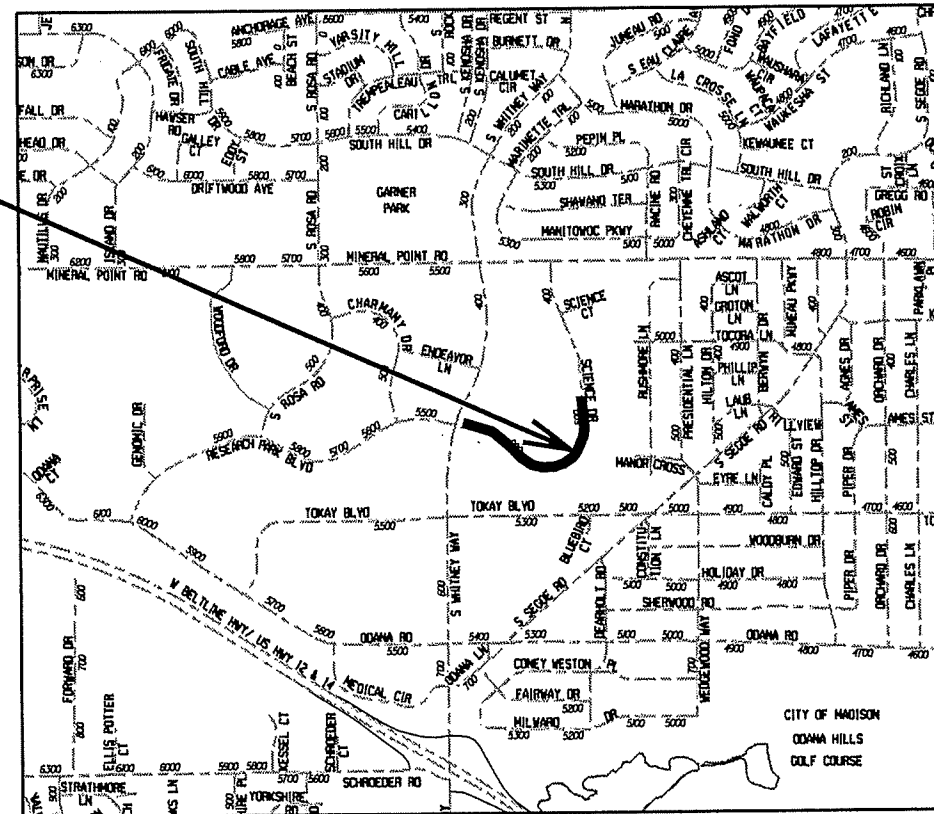
INDEX OF SHEETS

| SHEET NO. | TITLE |
|-----------|--------------------------------|
| 1 | DETAILS AND TYPICAL SECTION |
| DI | GRADING PLAN |
| GI-G4 | SIDEWALK PLAN & PROFILE |
| PI-P4 | South Rosa Road Traffic Island |
| P5 | ARCHITECTURAL SITE PLAN |
| A001 | RETAINING WALL PLAN |
| A002 | |

PROJECT LOCATION



| CONVENTIONAL SIGNS | |
|------------------------------------|---------|
| FIELD VERIFY ALL UTILITY LOCATIONS | |
| GAS | — G — |
| STORM SEWER | — ST — |
| SANITARY SEWER | — SAN — |
| WATER | — W — |
| OVERHEAD ELECTRIC | — OH — |
| POWER POLE | □ |



NOTES:

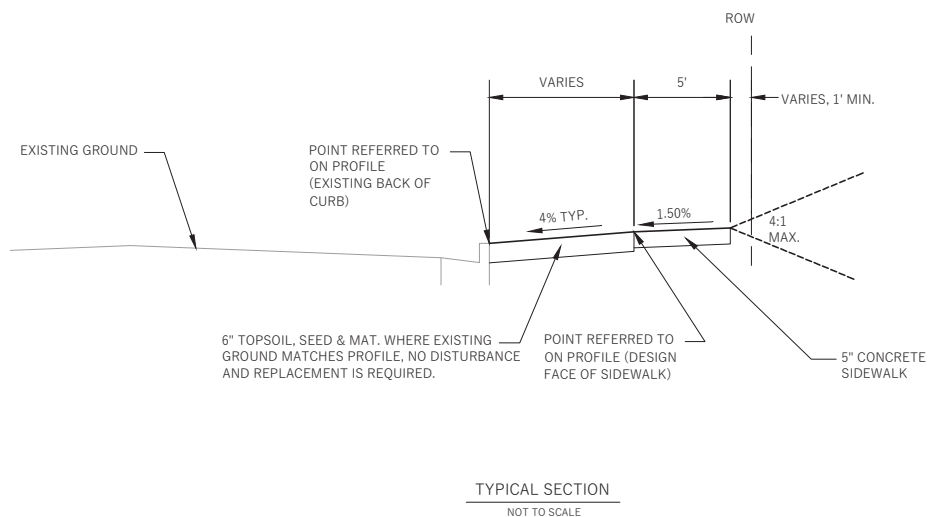
ALL GUTTERS SHALL DRAIN WITH A MINIMUM GRADE OF 0.50% TOWARD STORM SEWER INLETS.

SIDEWALK RAMPS AND CURB THRU SIDEWALK RAMPS SHALL HAVE A MAXIMUM SLOPE OF 1" PER 12". SIDEWALK AND CURB RAMPS SHALL BE CONSTRUCTED WITH A SIDE SLOPE OF 2.00%. SIDEWALK SHALL HAVE A MINIMUM LONGITUDINAL SLOPE OF 0.50% AND A MAXIMUM LONGITUDINAL SLOPE OF 5.00%

PLOT SCALE: _____

REV. DATE: _____

ORIGINATOR: CITY OF MADISON, STREETS DIVISION



THE CROSS SLOPE OF SIDEWALKS AND BARRIER FREE SIDEWALK CURB RAMPS SHALL TYPICALLY BE 1.5%. THE LONGITUDINAL GRADE OF BARRIER FREE SIDEWALK CURB RAMPS SHALL NOT EXCEED 8.33%. ALL SIDEWALK RAMPS SHALL BE CONSTRUCTED ACCORDING TO S.D.D. 3.03. AT ALL OTHER LOCATIONS THE LONGITUDINAL GRADE OF SIDEWALKS SHALL NOT EXCEED 5.0% OR THE ADJACENT STREET GRADE WHICHEVER IS GREATER NOR BE LESS THAN 0.5% AND SHALL DRAIN TOWARD STORM SEWER INLETS. SIDE SLOPES WITHIN TEN FEET OF A PUBLIC SIDEWALK SHALL NOT EXCEED 4.00/1. ALL SIDEWALK AND SIDEWALK RAMP ELEVATIONS AND GRADES SHALL BE FIELD VERIFIED AND SET TO COMPLY WITH THE CITY OF MADISON STANDARD SPECIFICATIONS AND THE A.D.A. GUIDELINES.

OBTAIN A PRINT OUT OF THE ALIGNMENT FROM THE CITY ENGINEER PRIOR TO STAKING THIS PROJECT.

CURB STATION AND OFFSETS SHALL BE TO THE BACK OF CURB UNLESS OTHERWISE INDICATED. CURB ELEVATIONS SHALL BE TO THE TOP OF CURB (OR EXTENDED TOP OF CURB FOR DRIVEWAYS OR RAMPS) UNLESS OTHERWISE INDICATED.

POWER POLES AND OTHER OBSTRUCTIONS SHALL BE MOVED TO PROVIDE 2 FEET MINIMUM OF CLEAR DISTANCE FROM ANY EDGE OF SIDEWALK.

ANY INFORMATION SHOWN ON THIS PLAN, WHICH IS NOT PART OF THIS PROJECT, IS PRELIMINARY AND NOT FOR CONSTRUCTION.

THERE MAY BE EXISTING UTILITIES OR OTHER FEATURES WHICH ARE EITHER NOT SHOWN OR SHOWN INCORRECTLY ON THIS PLAN. IT IS THE RESPONSIBILITY OF THE DEVELOPER TO LOCATE AND IDENTIFY ALL UTILITIES AND TOPOGRAPHY WHICH MAY AFFECT THE CONSTRUCTION OF THESE IMPROVEMENTS.

ALL PERMANENT SIGNING AND POSTING WILL BE DETERMINED AND PROVIDED BY THE TRAFFIC ENGINEERING DIVISION, FOLLOWING CONSTRUCTION OF THESE IMPROVEMENTS.

THE DEVELOPER SHALL PROVIDE, INSTALL AND MAINTAIN ALL STREET END BARRICADES, SIGNING AND TRAFFIC CONTROL, AS REQUIRED BY THE CITY TRAFFIC ENGINEER.

ALL WORK IN THE RIGHT OF WAY AND PUBLIC EASEMENTS SHALL BE IN ACCORDANCE WITH THE CITY OF MADISON STANDARD SPECIFICATIONS FOR PUBLIC WORKS CONSTRUCTION.

THE LOCATION AND INFORMATION FOR PROPOSED NEW TREES, IN THE PUBLIC RIGHT OF WAY OR ON PUBLIC LANDS ARE APPROXIMATE AND ARE SHOWN FOR REFERENCE ONLY. THE LOCATIONS, SPECIFICATIONS AND PLANTING METHODS OF ALL PROPOSED NEW OR REPLACEMENT TREES IN THE PUBLIC RIGHT OF WAY OR ON PUBLIC LANDS SHALL BE APPROVED BY THE CITY FORESTER PRIOR TO INSTALLATION.

NO TREES IN THE RIGHT OF WAY OR ON PUBLIC LANDS SHALL BE TRIMMED, PRUNED, REMOVED OR ADVERSELY AFFECTED IN ANY WAY UNTIL THE DEVELOPER HAS RECEIVED WRITTEN PERMISSION FROM THE CITY ENGINEER OR CITY FORESTER. SAID WRITTEN PERMISSION SHALL INCLUDE LANGUAGE INDICATING THAT SECTION 10.101 OF THE MADISON GENERAL ORDINANCES AND ADMINISTRATIVE PROCEDURE MEMORANDUM NO. 6-2, REFERENCING TO NOTIFICATION OF PROPERTY OCCUPANTS AND/OR OWNERS HAS BEEN COMPLIED WITH.

DEVELOPER MUST SUBMIT A TRAFFIC CONTROL PLAN TO CITY TRAFFIC ENGINEERING AT LEAST 14 DAYS PRIOR TO THE START OF WORK. WORK SHALL NOT PROCEED UNTIL AN APPROVED TRAFFIC CONTROL PLAN IS IN PLACE.



UNIVERSITY RESEARCH PARK
SCIENCE DRIVE SIDEWALK
CITY OF MADISON, DANE COUNTY, WI



Sheet Title:
STANDARD NOTES, COMMENTS AND SECTIONS

SCIENCE DRIVE
MADISON, WI 53711



Toll Free (800) 242-8511 -or- 811
Hearing Impaired TDD (800) 542-2289
www.DiggersHotline.com

Graphic Scale
0' 5' 10' 20' 30'
1" = 40'

| No. | Date: | Description: |
|-----|-------|--------------|
| | | |
| | | |
| | | |
| | | |
| | | |
| | | |
| | | |
| | | |
| | | |
| | | |

| | |
|--------------|------------------|
| Wyser Number | 17-0504 |
| Set Type | FOR CONSTRUCTION |
| Date Issued | 09/04/2019 |
| Sheet Number | D-1 |

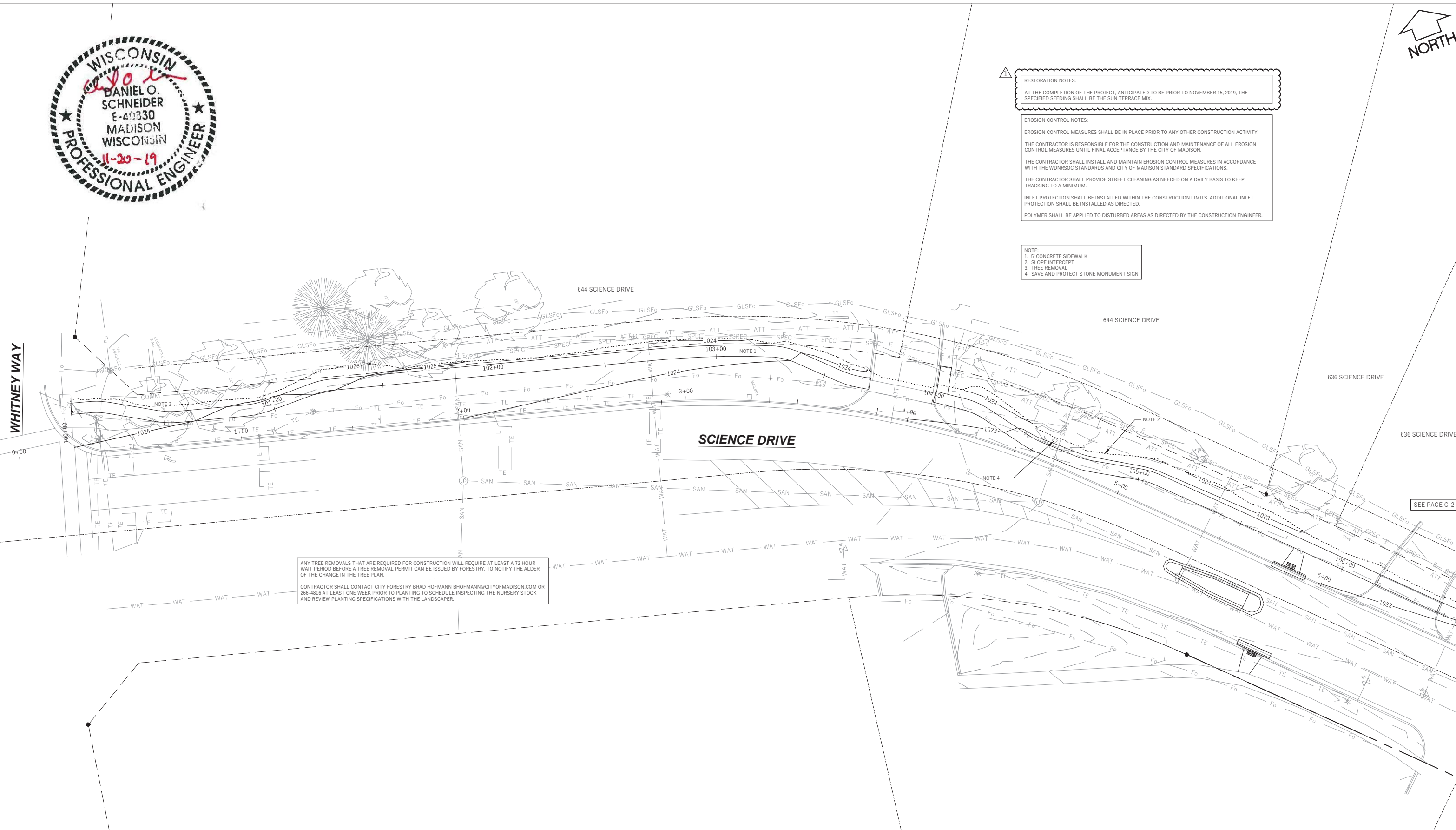


RESTORATION NOTES:
 AT THE COMPLETION OF THE PROJECT, ANTICIPATED TO BE PRIOR TO NOVEMBER 15, 2019, THE SPECIFIED SEEDING SHALL BE THE SUN TERRACE MIX.

EROSION CONTROL NOTES:
 EROSION CONTROL MEASURES SHALL BE IN PLACE PRIOR TO ANY OTHER CONSTRUCTION ACTIVITY. THE CONTRACTOR IS RESPONSIBLE FOR THE CONSTRUCTION AND MAINTENANCE OF ALL EROSION CONTROL MEASURES UNTIL FINAL ACCEPTANCE BY THE CITY OF MADISON.
 THE CONTRACTOR SHALL INSTALL AND MAINTAIN EROSION CONTROL MEASURES IN ACCORDANCE WITH THE WDNRSOC STANDARDS AND CITY OF MADISON STANDARD SPECIFICATIONS.
 THE CONTRACTOR SHALL PROVIDE STREET CLEANING AS NEEDED ON A DAILY BASIS TO KEEP TRACKING TO A MINIMUM.
 INLET PROTECTION SHALL BE INSTALLED WITHIN THE CONSTRUCTION LIMITS. ADDITIONAL INLET PROTECTION SHALL BE INSTALLED AS DIRECTED.
 POLYMER SHALL BE APPLIED TO DISTURBED AREAS AS DIRECTED BY THE CONSTRUCTION ENGINEER.

NOTE:
 1. 5' CONCRETE SIDEWALK
 2. SLOPE INTERCEPT
 3. TREE REMOVAL
 4. SAVE AND PROTECT STONE MONUMENT SIGN

ANY TREE REMOVALS THAT ARE REQUIRED FOR CONSTRUCTION WILL REQUIRE AT LEAST A 72 HOUR WAIT PERIOD BEFORE A TREE REMOVAL PERMIT CAN BE ISSUED BY FORESTRY, TO NOTIFY THE ALDER OF THE CHANGE IN THE TREE PLAN.
 CONTRACTOR SHALL CONTACT CITY FORESTRY BRAD.HOFMANN@CITYOFMADISON.COM OR 266-4816 AT LEAST ONE WEEK PRIOR TO PLANTING TO SCHEDULE INSPECTING THE NURSERY STOCK AND REVIEW PLANTING SPECIFICATIONS WITH THE LANDSCAPER.



SEE PAGE G-2

File: \\WYSESERVER2\Wysers\Engineering\2017\170504_URP - Science Drive Sidewalk\DWG\17-0504_Grading Plans_Science Drive Sidewalk.dwg Layout: STA 0+00 to 6+00 User: Admin Plotted: Oct 04, 2019 - 2:11pm

WHITNEY WAY

UNIVERSITY RESEARCH PARK
 SCIENCE DRIVE SIDEWALK
 CITY OF MADISON, DANE COUNTY, WI

Sheet Title:
 GRADING & EROSION CONTROL PLAN
 SCIENCE DRIVE
 STA 0+00 TO 6+00

SCIENCE DRIVE
 MADISON, WI 53711

DIGGERS HOTLINE
 Toll Free (800) 242-8511 or 811
 Hearing Impaired TDD (800) 542-2289
 www.DiggersHotline.com

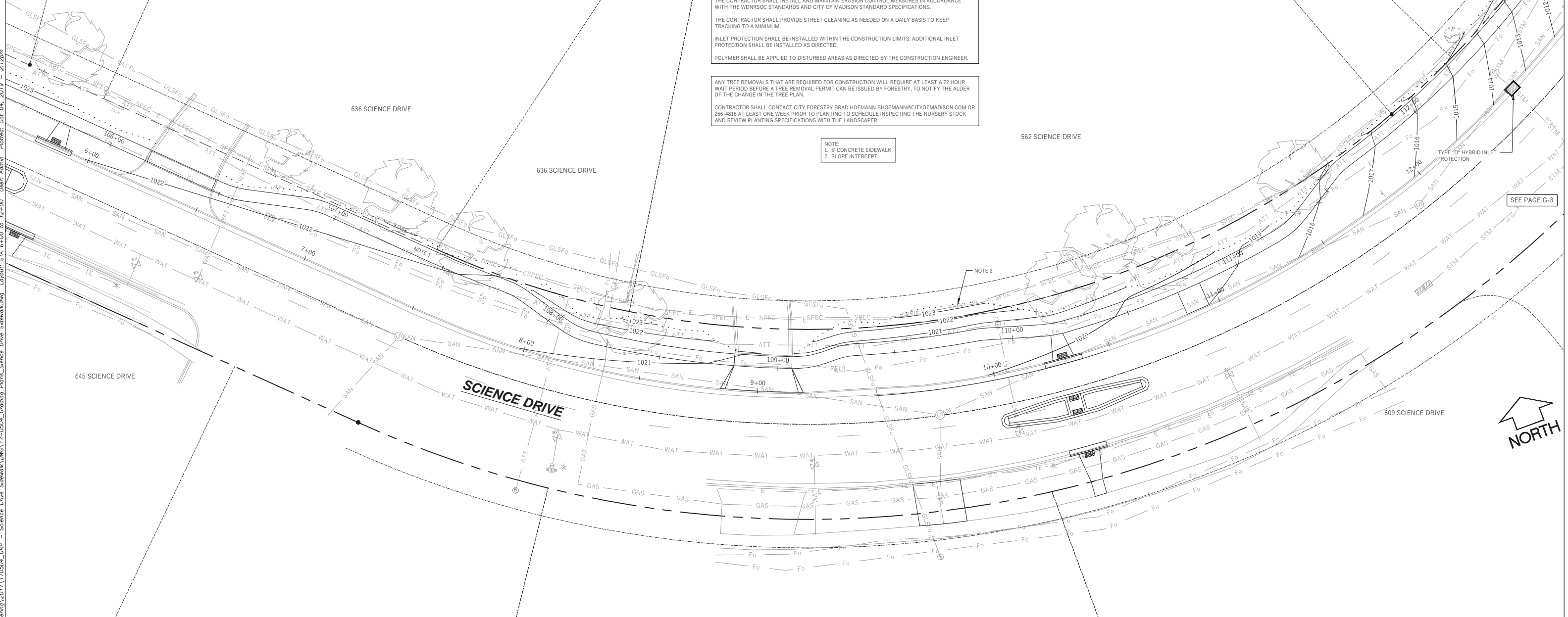
Graphic Scale
 0' 5' 10' 20' 30'
 1" = 40'

| No. | Date | Description |
|-----|----------|-------------|
| 1 | 10/10/19 | CB No. 1 |

| | |
|--------------|------------------|
| Wyser Number | 17-0504 |
| Set Type | FOR CONSTRUCTION |
| Date Issued | 09/12/2019 |
| Sheet Number | G-1 |



SEE PAGE G-1



RESTORATION NOTES:
 AT THE COMPLETION OF THE PROJECT, ANTICIPATED TO BE PRIOR TO NOVEMBER 15, 2019, THE SPECIFIED SEEDING SHALL BE THE SUN TERRACE MIX.

EROSION CONTROL NOTES:
 EROSION CONTROL MEASURES SHALL BE IN PLACE PRIOR TO ANY OTHER CONSTRUCTION ACTIVITY.
 THE CONTRACTOR IS RESPONSIBLE FOR THE CONSTRUCTION AND MAINTENANCE OF ALL EROSION CONTROL MEASURES UNTIL FINAL ACCEPTANCE BY THE CITY OF MADISON.
 THE CONTRACTOR SHALL INSTALL AND MAINTAIN EROSION CONTROL MEASURES IN ACCORDANCE WITH THE WDNR SOC STANDARDS AND CITY OF MADISON STANDARD SPECIFICATIONS.
 THE CONTRACTOR SHALL PROVIDE STREET CLEANING AS NEEDED ON A DAILY BASIS TO KEEP TRACKING TO A MINIMUM.
 INLET PROTECTION SHALL BE INSTALLED WITHIN THE CONSTRUCTION LIMITS. ADDITIONAL INLET PROTECTION SHALL BE INSTALLED AS DIRECTED.
 POLYMER SHALL BE APPLIED TO DISTURBED AREAS AS DIRECTED BY THE CONSTRUCTION ENGINEER.

ANY TREE REMOVALS THAT ARE REQUIRED FOR CONSTRUCTION WILL REQUIRE AT LEAST A 72 HOUR WAIT PERIOD BEFORE A TREE REMOVAL PERMIT CAN BE ISSUED BY FORESTRY, TO NOTIFY THE ALDER OF THE CHANGE IN THE TREE PLAN.
 CONTRACTOR SHALL CONTACT CITY FORESTRY BRAD.HOFMANN@CITYOFMADISON.COM OR 266-4816 AT LEAST ONE WEEK PRIOR TO PLANTING TO SCHEDULE INSPECTING THE NURSERY STOCK AND REVIEW PLANTING SPECIFICATIONS WITH THE LANDSCAPER.

NOTE:
 1. 5' CONCRETE SIDEWALK
 2. SLOPE INTERCEPT

PART OF LOT 17

SEE PAGE G-3

File: \\WYSESERVER2\Wysers_Engineering\2017\170504_URP_Science Drive Sidewalk\DWG\17-0504_Grading Plans_Science Drive Sidewalk.dwg Layout: STA 6+00 to 12+00 User: Admin Plot: Oct 04, 2019 2:12pm

WYSER ENGINEERING

UNIVERSITY RESEARCH PARK
 SCIENCE DRIVE SIDEWALK
 CITY OF MADISON, DANE COUNTY, WI

| | |
|------------------------------------|--|
| Sheet Title: | UNIVERSITY RESEARCH PARK GRADING & EROSION CONTROL PLAN SCIENCE DRIVE STA 6+00 TO 12+00 |
| SCIENCE DRIVE MADISON, WI 53711 | |

DIGGERS HOTLINE
 Toll Free (800) 242-8511 or- 811
 Hearing Impaired TDD (800) 542-2289
 www.DiggersHotline.com

Graphic Scale
 0' 5' 10' 20' 30'
 1" = 40'

| No. | Date | Description |
|-----|----------|-------------|
| 1 | 10/10/19 | CB No. 1 |

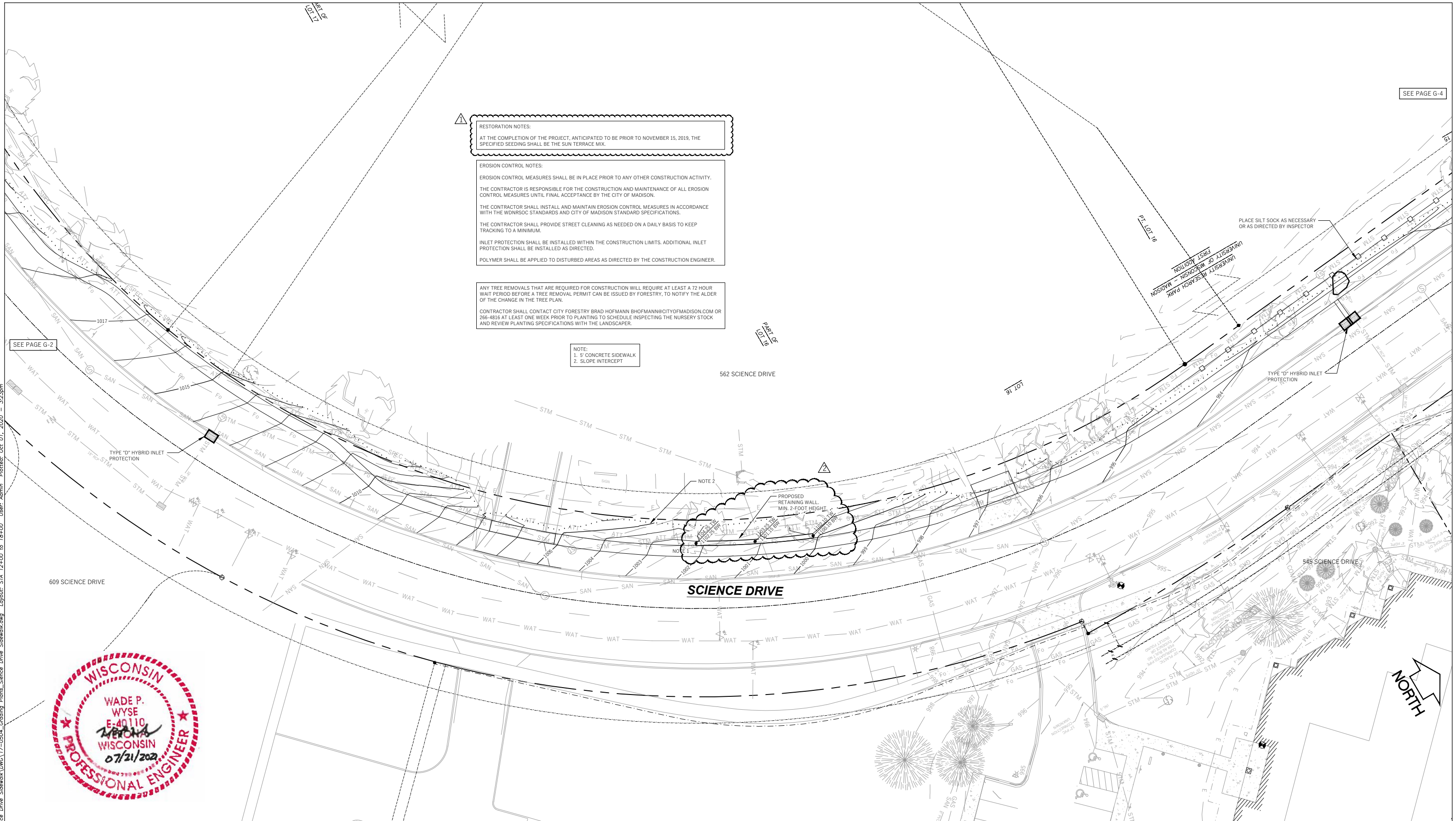
| | |
|--------------|------------------|
| Wyser Number | 17-0504 |
| Set Type | FOR CONSTRUCTION |
| Date Issued | 09/12/2019 |
| Sheet Number | G-2 |

RESTORATION NOTES:
 AT THE COMPLETION OF THE PROJECT, ANTICIPATED TO BE PRIOR TO NOVEMBER 15, 2019, THE SPECIFIED SEEDING SHALL BE THE SUN TERRACE MIX.

EROSION CONTROL NOTES:
 EROSION CONTROL MEASURES SHALL BE IN PLACE PRIOR TO ANY OTHER CONSTRUCTION ACTIVITY. THE CONTRACTOR IS RESPONSIBLE FOR THE CONSTRUCTION AND MAINTENANCE OF ALL EROSION CONTROL MEASURES UNTIL FINAL ACCEPTANCE BY THE CITY OF MADISON.
 THE CONTRACTOR SHALL INSTALL AND MAINTAIN EROSION CONTROL MEASURES IN ACCORDANCE WITH THE WDNR SOC STANDARDS AND CITY OF MADISON STANDARD SPECIFICATIONS.
 THE CONTRACTOR SHALL PROVIDE STREET CLEANING AS NEEDED ON A DAILY BASIS TO KEEP TRACKING TO A MINIMUM.
 INLET PROTECTION SHALL BE INSTALLED WITHIN THE CONSTRUCTION LIMITS. ADDITIONAL INLET PROTECTION SHALL BE INSTALLED AS DIRECTED.
 POLYMER SHALL BE APPLIED TO DISTURBED AREAS AS DIRECTED BY THE CONSTRUCTION ENGINEER.

NOTE:
 ANY TREE REMOVALS THAT ARE REQUIRED FOR CONSTRUCTION WILL REQUIRE AT LEAST A 72 HOUR WAIT PERIOD BEFORE A TREE REMOVAL PERMIT CAN BE ISSUED BY FORESTRY, TO NOTIFY THE ALDER OF THE CHANGE IN THE TREE PLAN.
 CONTRACTOR SHALL CONTACT CITY FORESTRY BRAD HOFMANN BHOFMANN@CITYOFMADISON.COM OR 266-4816 AT LEAST ONE WEEK PRIOR TO PLANTING TO SCHEDULE INSPECTING THE NURSERY STOCK AND REVIEW PLANTING SPECIFICATIONS WITH THE LANDSCAPER.

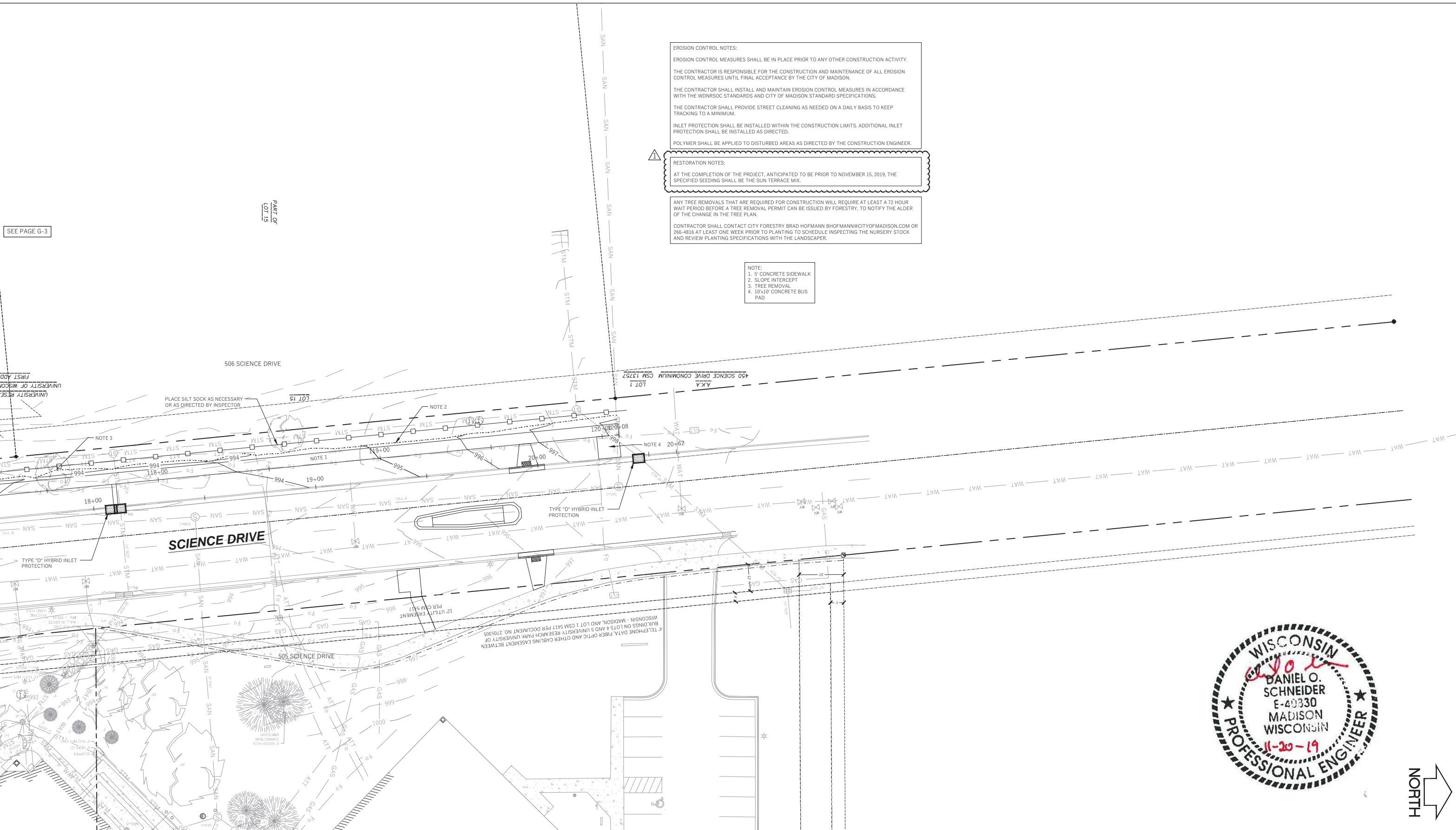
NOTE:
 1. 5' CONCRETE SIDEWALK
 2. SLOPE INTERCEPT



File: W:\2017\170504_LRP - Science Drive Sidewalk\DWG\17-0504_Grading Plans_Science Drive Sidewalk.dwg Layout: STA 12+00 to 18+00 User: Admin Printed: Oct 01, 2020 - 3:23pm

| WYSER ENGINEERING UNIVERSITY RESEARCH PARK SCIENCE DRIVE SIDEWALK CITY OF MADISON, DANE COUNTY, WI | Sheet Title: GRADING & EROSION CONTROL PLAN SCIENCE DRIVE STA 12+00 TO 18+00 | Toll Free (800) 242-8511 or- 811 Hearing Impaired TDD (800) 542-2289 www.DiggersHotline.com | Graphic Scale 0' 5' 10' 20' 30' 1" = 40' | Revisions: <table border="1"> <tr> <th>No.</th> <th>Date</th> <th>Description</th> </tr> <tr> <td>1</td> <td>10/10/19</td> <td>CB No. 1</td> </tr> <tr> <td>2</td> <td>10/01/20</td> <td>CB No. 2</td> </tr> </table> | No. | Date | Description | 1 | 10/10/19 | CB No. 1 | 2 | 10/01/20 | CB No. 2 | Wyser Number: 17-0504 Set Type: FOR CONSTRUCTION Date Issued: 09/12/2019 |
|--|---|--|--|--|------|-------------|-------------|---|----------|----------|---|----------|----------|--|
| | No. | | | | Date | Description | | | | | | | | |
| 1 | 10/10/19 | CB No. 1 | | | | | | | | | | | | |
| 2 | 10/01/20 | CB No. 2 | | | | | | | | | | | | |
| SCIENCE DRIVE MADISON, WI 53711 | Sheet Number: G-3 | | | | | | | | | | | | | |

File: \\WYSESERVER2\Wysers\Engineering\2017\170504_URP - Science Drive Sidewalk\DWG\17-0504_Grading Plans_Science Drive Sidewalk.dwg Layout: STA 18+00 to END User: Admin Plotdate: Oct 04, 2019 - 2:12pm



EROSION CONTROL NOTES:
 EROSION CONTROL MEASURES SHALL BE IN PLACE PRIOR TO ANY OTHER CONSTRUCTION ACTIVITY.
 THE CONTRACTOR IS RESPONSIBLE FOR THE CONSTRUCTION AND MAINTENANCE OF ALL EROSION CONTROL MEASURES UNTIL FINAL ACCEPTANCE BY THE CITY OF MADISON.
 THE CONTRACTOR SHALL INSTALL AND MAINTAIN EROSION CONTROL MEASURES IN ACCORDANCE WITH THE WDNR SOC STANDARDS AND CITY OF MADISON STANDARD SPECIFICATIONS.
 THE CONTRACTOR SHALL PROVIDE STREET CLEANING AS NEEDED ON A DAILY BASIS TO KEEP TRACKING TO A MINIMUM.
 INLET PROTECTION SHALL BE INSTALLED WITHIN THE CONSTRUCTION LIMITS. ADDITIONAL INLET PROTECTION SHALL BE INSTALLED AS DIRECTED.
 POLYMER SHALL BE APPLIED TO DISTURBED AREAS AS DIRECTED BY THE CONSTRUCTION ENGINEER.

RESTORATION NOTES:
 AT THE COMPLETION OF THE PROJECT, ANTICIPATED TO BE PRIOR TO NOVEMBER 15, 2019, THE SPECIFIED SEEDING SHALL BE THE SUN TERRACE MIX.

ANY TREE REMOVALS THAT ARE REQUIRED FOR CONSTRUCTION WILL REQUIRE AT LEAST A 72 HOUR WAIT PERIOD BEFORE A TREE REMOVAL PERMIT CAN BE ISSUED BY FORESTRY, TO NOTIFY THE ALDER OF THE CHANGE IN THE TREE PLAN.
 CONTRACTOR SHALL CONTACT CITY FORESTRY BRAD.HOFMANN@CITYOFMADISON.COM OR 266-4816 AT LEAST ONE WEEK PRIOR TO PLANTING TO SCHEDULE INSPECTING THE NURSERY STOCK AND REVIEW PLANTING SPECIFICATIONS WITH THE LANDSCAPER.

NOTE:
 1. 5' CONCRETE SIDEWALK
 2. SLOPE INTERCEPT
 3. TREE REMOVAL
 4. 10x10' CONCRETE BUS PAD

SEE PAGE G-3

PART OF LOT 19



WYSER ENGINEERING

UNIVERSITY RESEARCH PARK
 SCIENCE DRIVE SIDEWALK
 CITY OF MADISON, DANE COUNTY, WI

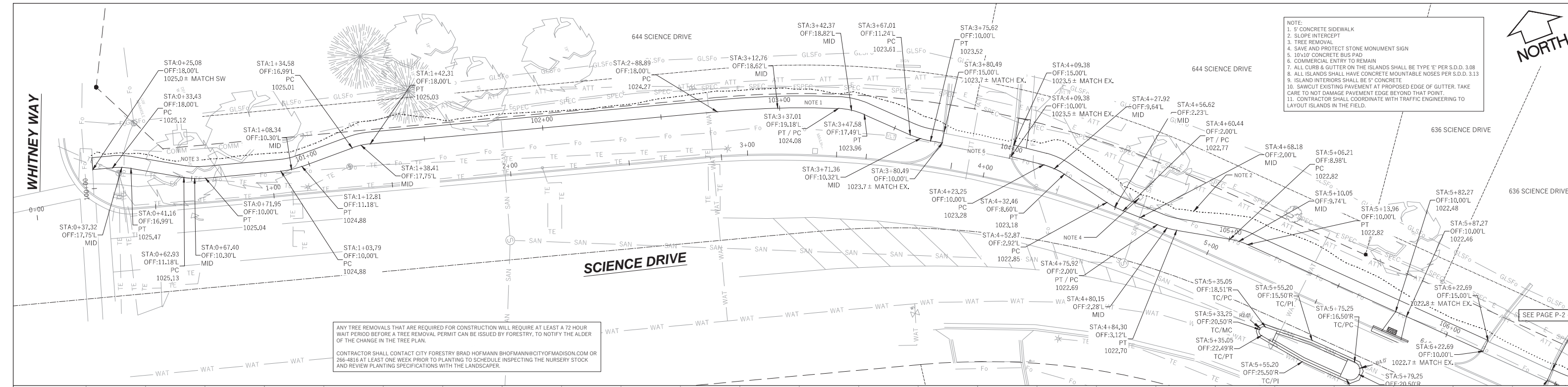
| | |
|--------------|---|
| Sheet Title: | GRADING & EROSION CONTROL PLAN SCIENCE DRIVE STA 18+00 TO END |
| | SCIENCE DRIVE MADISON, WI 53711 |

DIGGERS HOTLINE
 Toll Free (800) 242-8511 or 811
 Hearing Impaired TDD (800) 542-2289
 www.DiggersHotline.com

Graphic Scale
 0" = 5' 10" = 20' = 30'
 1" = 40'

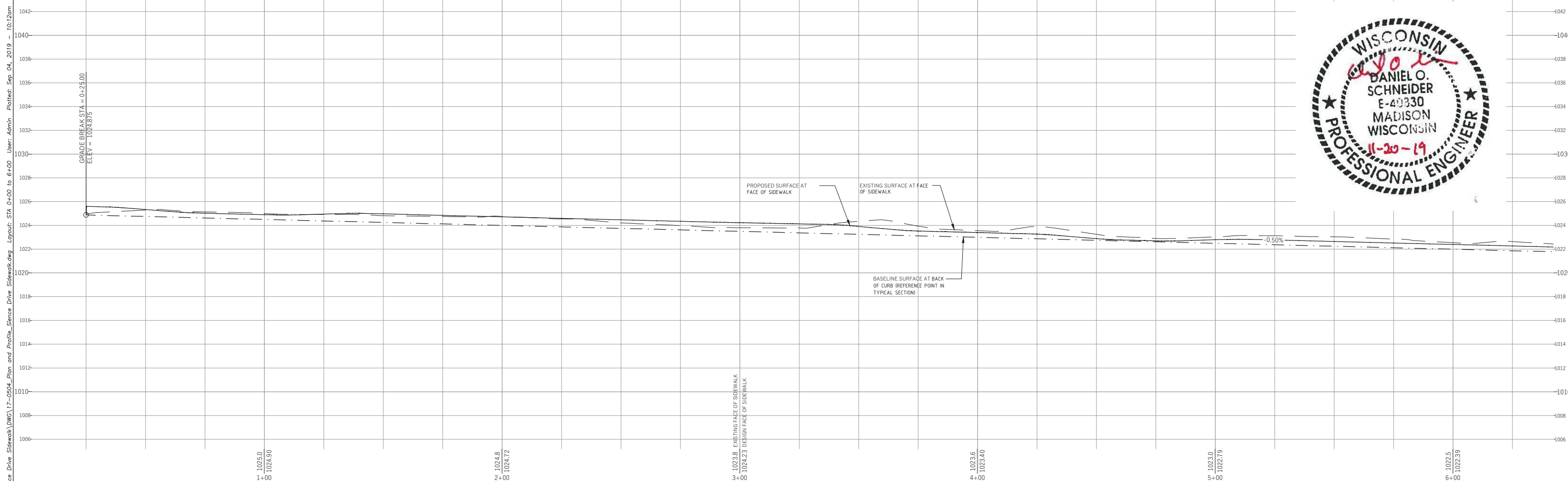
| Revisions: | No. | Date: | Description: |
|------------|-----|----------|--------------|
| | 1 | 10/10/19 | CB No. 1 |

| | |
|--------------|------------------|
| Wyser Number | 17-0504 |
| Set Type | FOR CONSTRUCTION |
| Date Issued | 09/12/2019 |
| Sheet Number | G-4 |



- NOTE:
- 5' CONCRETE SIDEWALK
 - SLOPE INTERCEPT
 - TREE REMOVAL
 - SAVE AND PROTECT STONE MONUMENT SIGN
 - 10'x10' CONCRETE BUS PAD
 - COMMERCIAL ENTRY TO REMAIN
 - ALL CURB & GUTTER ON THE ISLANDS SHALL BE TYPE 'E' PER S.D.D. 3.08
 - ALL ISLANDS SHALL HAVE CONCRETE MOUNTABLE NOSES PER S.D.D. 3.13
 - ISLAND INTERIORS SHALL BE 5" CONCRETE
 - SAVING EXISTING PAVEMENT AT PROPOSED EDGE OF GUTTER. TAKE CARE TO NOT DAMAGE PAVEMENT EDGE BEYOND THAT POINT.
 - CONTRACTOR SHALL COORDINATE WITH TRAFFIC ENGINEERING TO LAYOUT ISLANDS IN THE FIELD.

ANY TREE REMOVALS THAT ARE REQUIRED FOR CONSTRUCTION WILL REQUIRE AT LEAST A 72 HOUR WAIT PERIOD BEFORE A TREE REMOVAL PERMIT CAN BE ISSUED BY FORESTRY. TO NOTIFY THE ALDER OF THE CHANGE IN THE TREE PLAN.
 CONTRACTOR SHALL CONTACT CITY FORESTRY BRAD.HOFMANN@CITYOFMADISON.COM OR 266-4816 AT LEAST ONE WEEK PRIOR TO PLANTING TO SCHEDULE INSPECTING THE NURSERY STOCK AND REVIEW PLANTING SPECIFICATIONS WITH THE LANDSCAPER.



WYSER ENGINEERING

UNIVERSITY RESEARCH PARK
 SCIENCE DRIVE SIDEWALK
 CITY OF MADISON, DANE COUNTY, WI

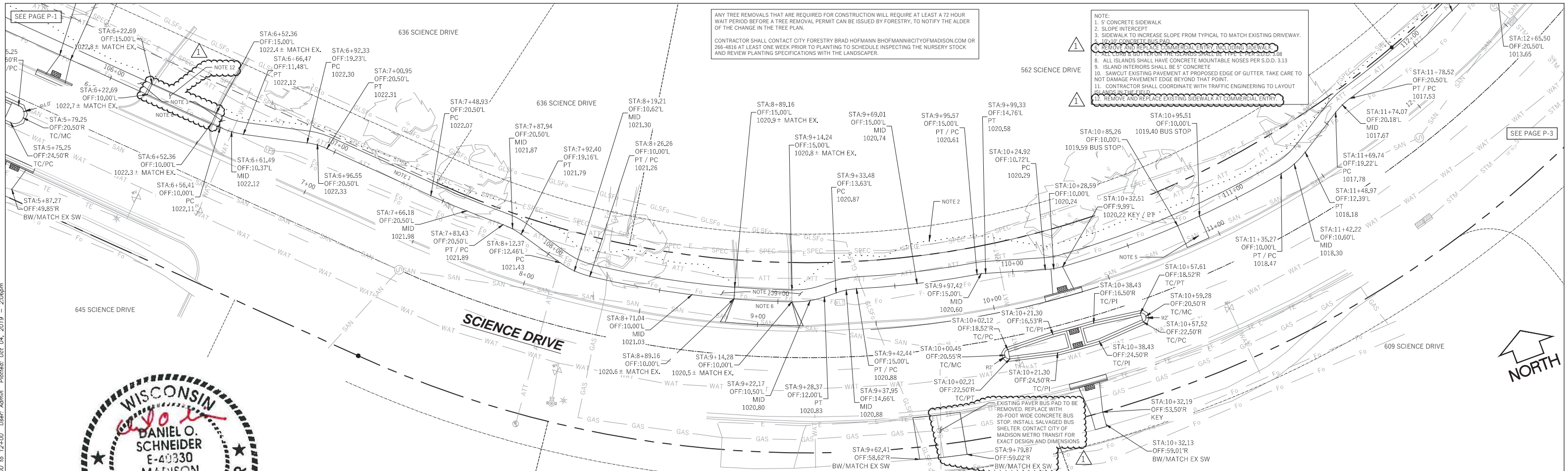
Sheet Title:
 PLAN AND PROFILE
 SCIENCE DRIVE
 STA 0+00 TO 6+00

SCIENCE DRIVE
 MADISON, WI 53711

DIGGERS HOTLINE
 Toll Free (800) 242-8511 or 811
 Hearing Impaired TDD (800) 542-2289
 www.DiggersHotline.com

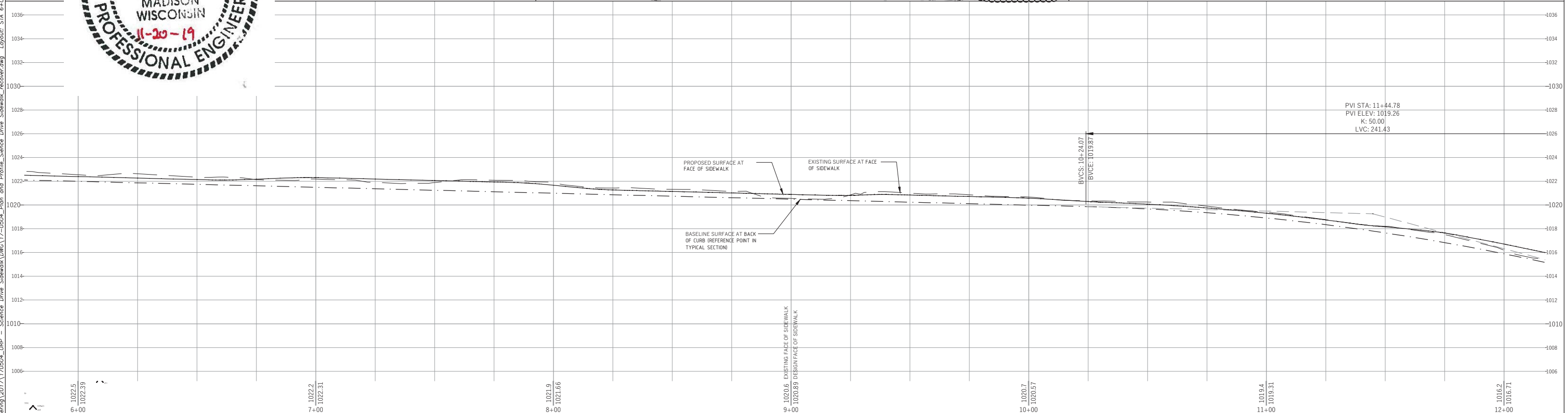
| | | |
|--|-------------------------------------|------------------------------|
| Graphic Scale 0' 5' 10' 20' 30' 1" = 40' | Revisions: No. Date Description: | Wyser Number 17-0504 |
| | | Set Type FOR CONSTRUCTION |
| | | Date Issued 09/04/2019 |
| | | Sheet Number P-1 |

File: \\WYSESERVER2\Wysers\Engineering\2017\76504_URP - Science Drive Sidewalk\DWG\17-0504_Plan and Profile_Science Drive Sidewalk_recover.dwg Layout: STA 6+00 to 12+00 User: Admin Plotted: Oct 04, 2019 - 2:06pm



ANY TREE REMOVALS THAT ARE REQUIRED FOR CONSTRUCTION WILL REQUIRE AT LEAST A 72 HOUR WAIT PERIOD BEFORE A TREE REMOVAL PERMIT CAN BE ISSUED BY FORESTRY, TO NOTIFY THE ALDER OF THE CHANGE IN THE TREE PLAN.
 CONTRACTOR SHALL CONTACT CITY FORESTRY BRAD HOFMANN BHOFMANN@CITYOFMADISON.COM OR 266-4816 AT LEAST ONE WEEK PRIOR TO PLANTING TO SCHEDULE INSPECTING THE NURSERY STOCK AND REVIEW PLANTING SPECIFICATIONS WITH THE LANDSCAPER.

- NOTE:
- 5' CONCRETE SIDEWALK
 - SLOPE INTERCEPT
 - SIDEWALK TO INCREASE SLOPE FROM TYPICAL TO MATCH EXISTING DRIVEWAY
 - 10x10 CONCRETE BUS PAD
 - REMOVE AND REPLACE EXISTING SIDEWALK AT COMMERCIAL ENTRY
 - ALL CURB & GUTTER ON THE ISLANDS SHALL BE TYPE E PER S.D.D. 3.08
 - ALL ISLANDS SHALL HAVE CONCRETE MOUNTABLE NOSES PER S.D.D. 3.13
 - ISLAND INTERIORS SHALL BE 5' CONCRETE
 - SAWCUT EXISTING PAVEMENT AT PROPOSED EDGE OF GUTTER. TAKE CARE TO NOT DAMAGE PAVEMENT EDGE BEYOND THAT POINT.
 - CONTRACTOR SHALL COORDINATE WITH TRAFFIC ENGINEERING TO LAYOUT ISLANDS IN THE FIELD
 - REMOVE AND REPLACE EXISTING SIDEWALK AT COMMERCIAL ENTRY



PVI STA: 11+44.78
 PVI ELEV: 1019.26
 K: 50.00
 LVC: 241.43

WYSER ENGINEERING
 UNIVERSITY RESEARCH PARK
 SCIENCE DRIVE SIDEWALK
 CITY OF MADISON, DANE COUNTY, WI

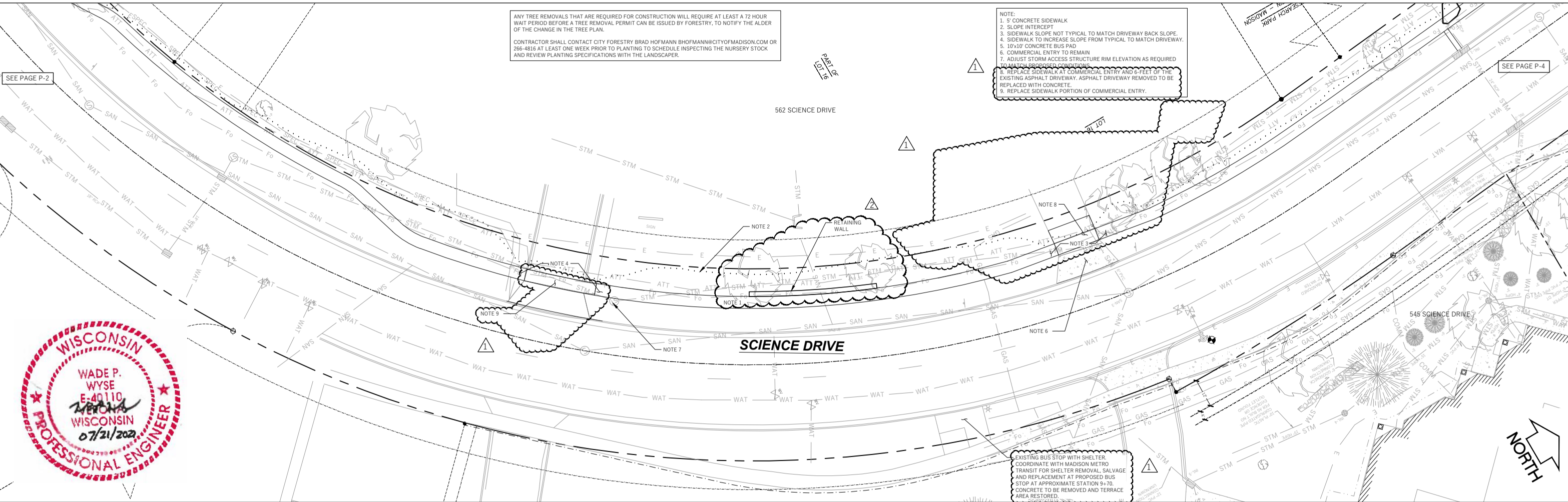
| | |
|--|------------------------------------|
| Sheet Title: PLAN AND PROFILE SCIENCE DRIVE STA 6+00 TO 12+00 | SCIENCE DRIVE MADISON, WI 53711 |
|--|------------------------------------|

DIGGERS HOTLINE
 Toll Free (800) 242-8511 or- 811
 Hearing Impaired TDD (800) 542-2289
 www.DiggersHotline.com

| | |
|---|---|
| Revisions: No. 1019.4 Date: 10/19/19 Description: CB No. 1 | Wyser Number: 17-0504 Set Type: FOR CONSTRUCTION Date Issued: 09/12/2019 Sheet Number: P-2 |
|---|---|

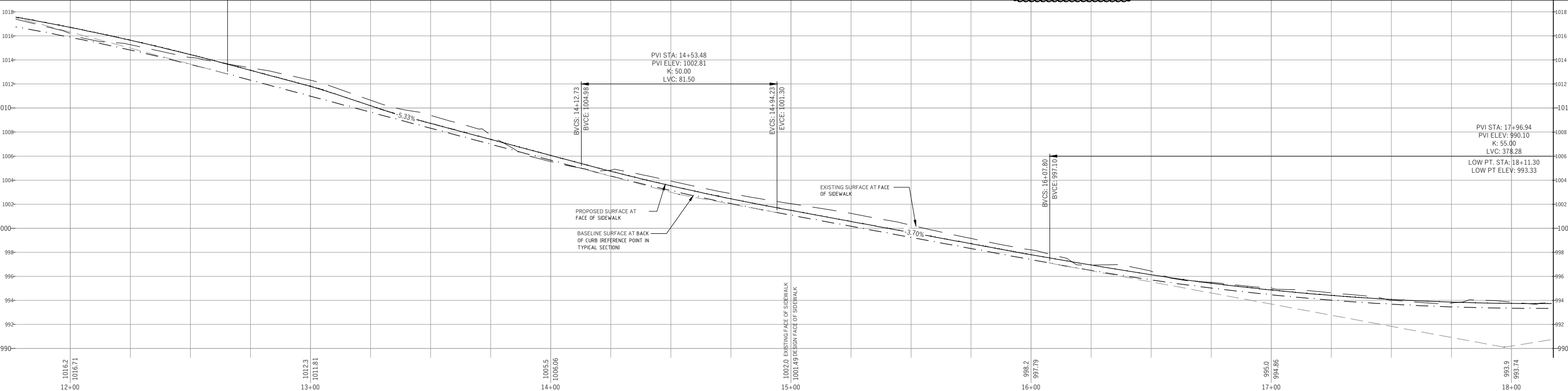
| |
|---------------------------------------|
| Graphic Scale: 0" = 5' 1" = 40' |
|---------------------------------------|

File: W:\2017\170504_URP - Science Drive Sidewalk\DWG\17-0504_Plan and Profile_Science Drive Sidewalk.dwg Layout: STA 12+00 to 18+00 User: Admin Printed: Oct 01, 2020 - 3:19pm



ANY TREE REMOVALS THAT ARE REQUIRED FOR CONSTRUCTION WILL REQUIRE AT LEAST A 72 HOUR WAIT PERIOD BEFORE A TREE REMOVAL PERMIT CAN BE ISSUED BY FORESTRY. TO NOTIFY THE ALDER OF THE CHANGE IN THE TREE PLAN.
 CONTRACTOR SHALL CONTACT CITY FORESTRY BRAD HOFMANN BHOFMANN@CITYOFMADISON.COM OR 266-4816 AT LEAST ONE WEEK PRIOR TO PLANTING TO SCHEDULE INSPECTING THE NURSERY STOCK AND REVIEW PLANTING SPECIFICATIONS WITH THE LANDSCAPER.

NOTE:
 1. 5' CONCRETE SIDEWALK
 2. SLOPE INTERCEPT
 3. SIDEWALK SLOPE NOT TYPICAL TO MATCH DRIVEWAY BACK SLOPE.
 4. SIDEWALK TO INCREASE SLOPE FROM TYPICAL TO MATCH DRIVEWAY.
 5. 10'x10' CONCRETE BUS PAD
 6. COMMERCIAL ENTRY TO REMAIN
 7. ADJUST STORM ACCESS STRUCTURE RIM ELEVATION AS REQUIRED TO MATCH PROPOSED CONDITIONS
 8. REPLACE SIDEWALK AT COMMERCIAL ENTRY AND 6 FEET OF THE EXISTING ASPHALT DRIVEWAY. ASPHALT DRIVEWAY REMOVED TO BE REPLACED WITH CONCRETE.
 9. REPLACE SIDEWALK PORTION OF COMMERCIAL ENTRY.



WYSER ENGINEERING

UNIVERSITY RESEARCH PARK
 SCIENCE DRIVE SIDEWALK

CITY OF MADISON, DANE COUNTY, WI

Sheet Title:
 PLAN AND PROFILE
 SCIENCE DRIVE
 STA 12+00 TO 18+00

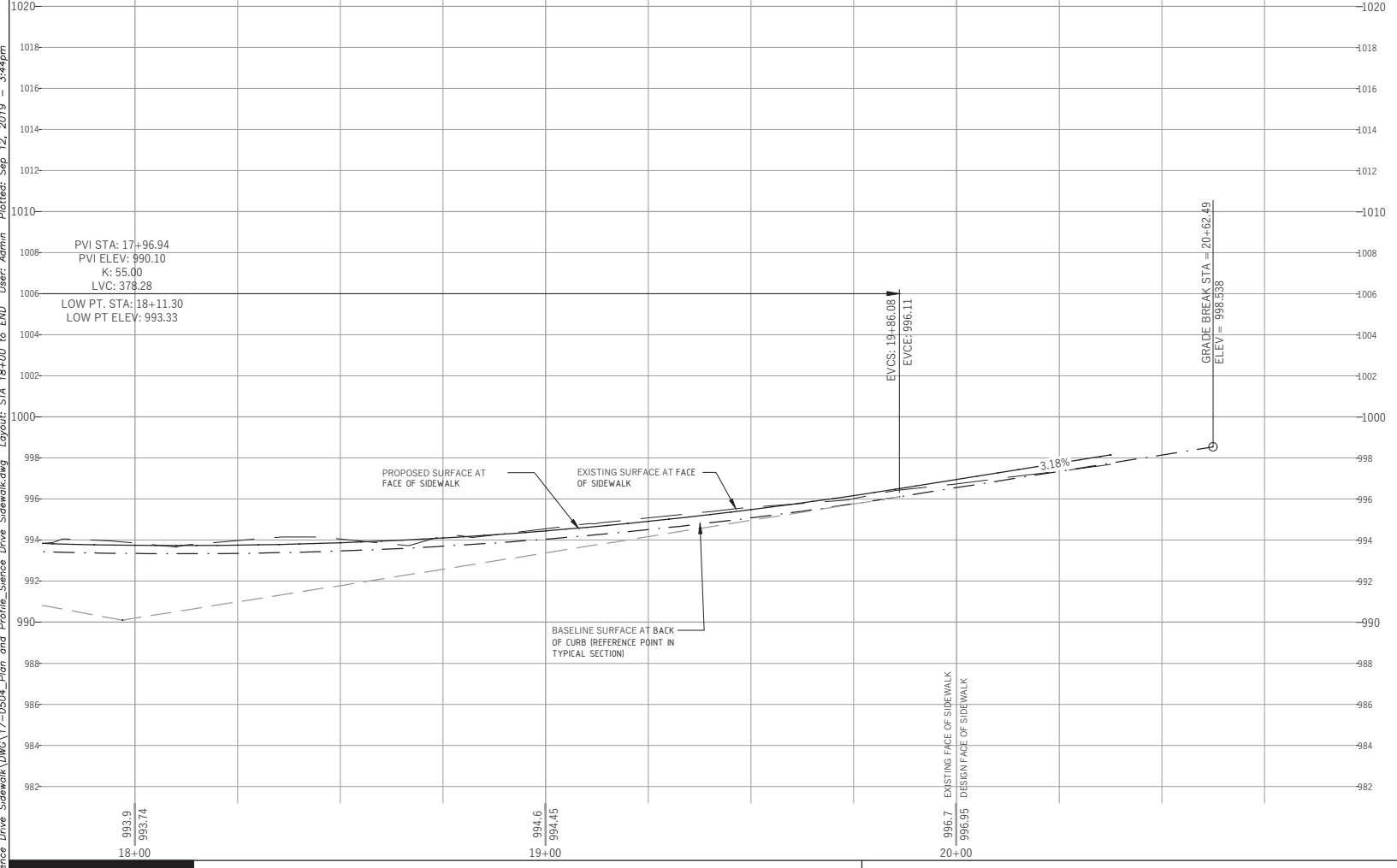
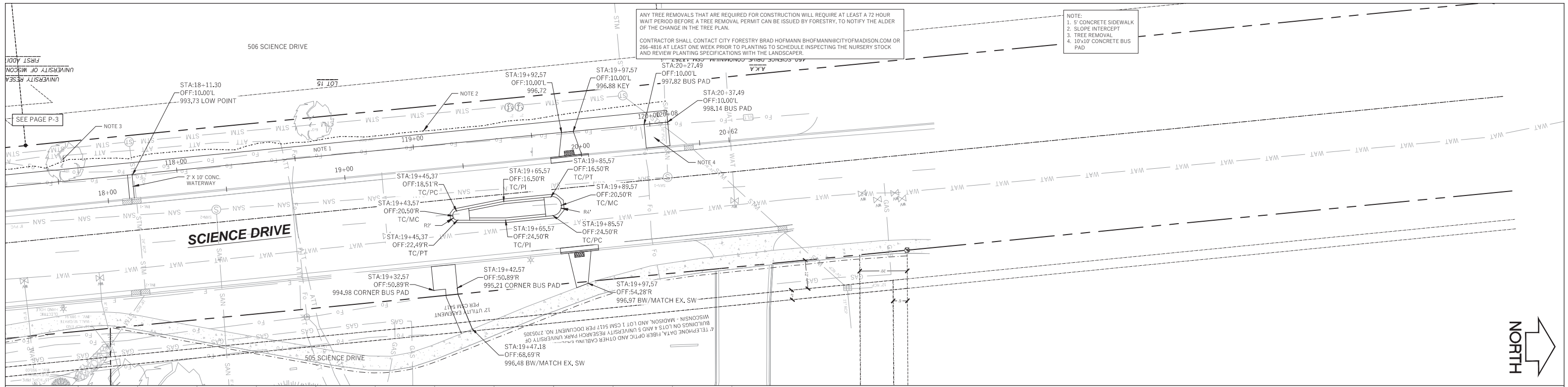
SCIENCE DRIVE
 MADISON, WI 53711

DIGGERS HOTLINE
 Toll Free (800) 242-8511 or 811
 Hearing Impaired TDD (800) 542-2289
 www.DiggersHotline.com

Graphic Scale
 0" = 10' 20' 30'
 1" = 40'

| No. | Date | Description |
|--------|----------|-------------|
| 995.0 | 10/10/19 | CB No. 1 |
| 994.86 | 10/01/20 | CB No. 2 |

| | |
|--------------|------------------|
| Wyser Number | 17-0504 |
| Set Type | FOR CONSTRUCTION |
| Date Issued | 09/12/2019 |
| Sheet Number | P-3 |



UNIVERSITY RESEARCH PARK
SCIENCE DRIVE SIDEWALK

CITY OF MADISON, DANE COUNTY, WI

WYSER ENGINEERING

Sheet Title:
PLAN AND PROFILE
SCIENCE DRIVE
STA 18+00 TO END

SCIENCE DRIVE
MADISON, WI 53711

DIGGERS HOTLINE

Toll Free (800) 242-8511 or 811

Hearing Impaired TDD (800) 542-2289

www.DiggersHotline.com

Graphic Scale

0' 5' 10' 20' 30'

1" = 40'

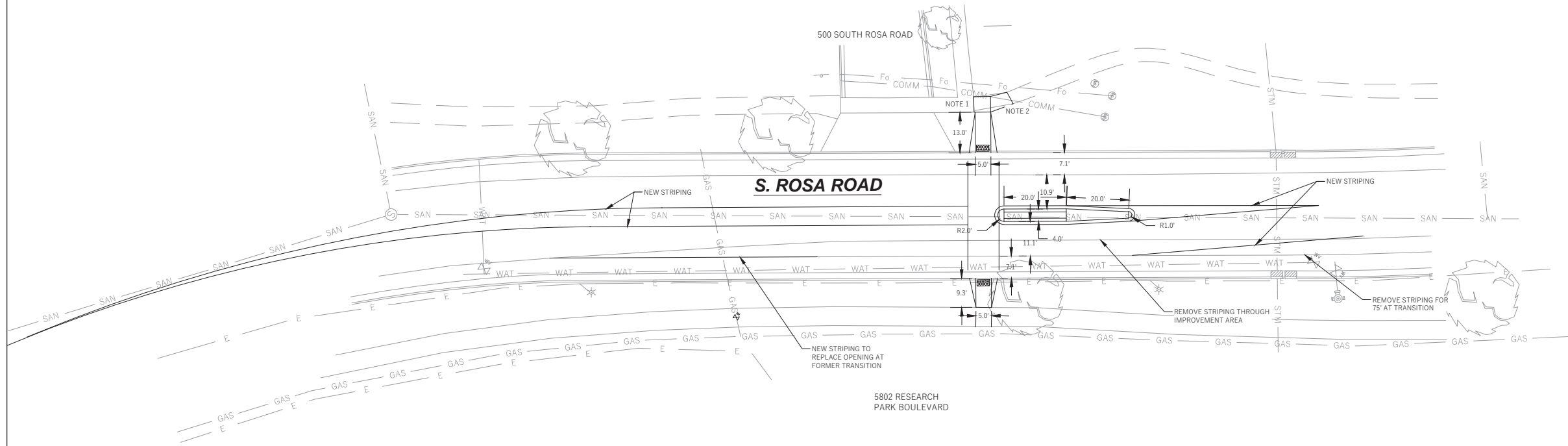
| Revisions: | No. | Date: | Description: |
|------------|-----|-------|--------------|
| | | | |
| | | | |
| | | | |
| | | | |
| | | | |
| | | | |
| | | | |
| | | | |
| | | | |
| | | | |
| | | | |
| | | | |
| | | | |
| | | | |
| | | | |
| | | | |
| | | | |
| | | | |
| | | | |
| | | | |
| | | | |
| | | | |

| | |
|--------------|------------------|
| Wyser Number | 17-0504 |
| Set Type | FOR CONSTRUCTION |
| Date Issued | 09/12/2019 |
| Sheet Number | P-4 |

File: W:\2017\170504_LRP - Science Drive Sidewalk\DWG\17-0504_Plan and Profile_Science Drive Sidewalk.dwg Layout: STA 18+00 to END User: Admin Plotted: Sep 12, 2019 - 3:44pm



- NOTE:
1. 5" CONCRETE SIDEWALK
 2. MATCH EXISTING GRAVEL WALK INTO NEW CONCRETE SIDEWALK.
 3. ALL CURB & GUTTER ON THE ISLANDS SHALL BE TYPE 'E' PER S.D.D. 3.08
 4. ALL ISLANDS SHALL HAVE CONCRETE MOUNTABLE NOSES PER S.D.D. 3.13
 5. ISLAND INTERIORS SHALL BE 5" CONCRETE
 6. SAWCUT EXISTING PAVEMENT AT PROPOSED EDGE OF GUTTER. TAKE CARE TO NOT DAMAGE PAVEMENT EDGE BEYOND THAT POINT.
 7. CONTRACTOR SHALL COORDINATE WITH TRAFFIC ENGINEERING TO LAYOUT ISLANDS IN THE FIELD.



ANY TREE REMOVALS THAT ARE REQUIRED FOR CONSTRUCTION WILL REQUIRE AT LEAST A 72 HOUR WAIT PERIOD BEFORE A TREE REMOVAL PERMIT CAN BE ISSUED BY FORESTRY, TO NOTIFY THE ALDER OF THE CHANGE IN THE TREE PLAN.

CONTRACTOR SHALL CONTACT CITY FORESTRY BRAD HOFMANN BHOFMANN@CITYOFMADISON.COM OR 266-4816 AT LEAST ONE WEEK PRIOR TO PLANTING TO SCHEDULE INSPECTING THE NURSERY STOCK AND REVIEW PLANTING SPECIFICATIONS WITH THE LANDSCAPER.



File: WA20171720504_LRP - Science Drive Sidewalk (DWG) 17-0504_Plan and Profile_Rosa Road Sidewalk.dwg Layout: STA 0+00 to 6+00 User: Admin Plotfile: Oct 30, 2019 - 1:37pm

UNIVERSITY RESEARCH PARK
SCIENCE DRIVE SIDEWALK

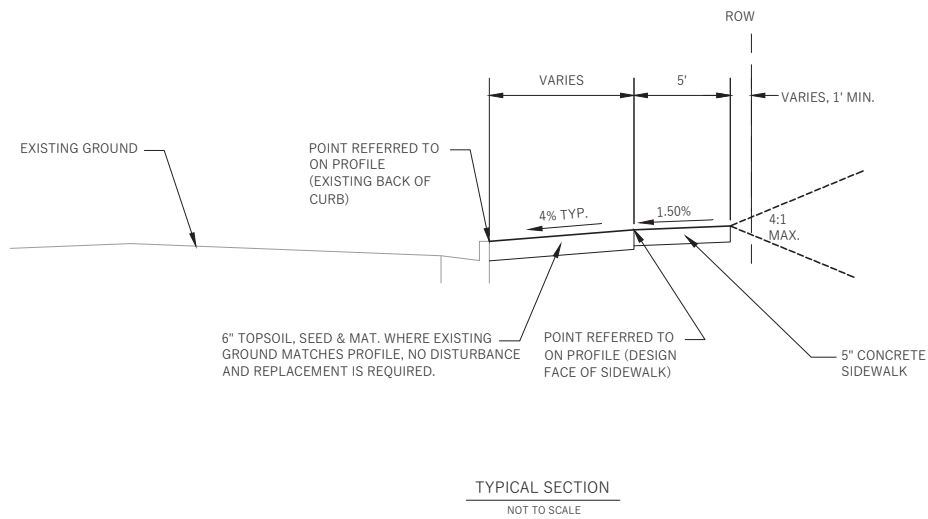
CITY OF MADISON, DANE COUNTY, WI

| | |
|---|--|
| <p>Sheet Title:</p> <p>SOUTH ROSA ROAD TRAFFIC ISLAND</p> | <p>SCIENCE DRIVE MADISON, WI 53711</p> |
|---|--|

Toll Free (800) 242-8511 -or- 811
Hearing Impaired TDD (800) 542-2289
www.DiggersHotline.com

| <p>Graphic Scale</p> | <p>Revisions:</p> <table border="1" style="width: 100%; border-collapse: collapse;"> <thead> <tr> <th>No.</th> <th>Date</th> <th>Description</th> </tr> </thead> <tbody> <tr> <td>1</td> <td>10/10/19</td> <td>CB No. 1</td> </tr> <tr> <td>2</td> <td>10/30/19</td> <td>CB No. 2</td> </tr> </tbody> </table> | No. | Date | Description | 1 | 10/10/19 | CB No. 1 | 2 | 10/30/19 | CB No. 2 |
|----------------------|--|-------------|------|-------------|---|----------|----------|---|----------|----------|
| No. | Date | Description | | | | | | | | |
| 1 | 10/10/19 | CB No. 1 | | | | | | | | |
| 2 | 10/30/19 | CB No. 2 | | | | | | | | |

| | |
|--------------------------------------|---|
| <p>Wyser Number</p> <p>17-0504</p> | <p>Set Type</p> <p>FOR CONSTRUCTION</p> |
| <p>Date Issued</p> <p>09/12/2019</p> | <p>Sheet Number</p> <p>P-5</p> |



THE CROSS SLOPE OF SIDEWALKS AND BARRIER FREE SIDEWALK CURB RAMPS SHALL TYPICALLY BE 1.5%. THE LONGITUDINAL GRADE OF BARRIER FREE SIDEWALK CURB RAMPS SHALL NOT EXCEED 8.33%. ALL SIDEWALK RAMPS SHALL BE CONSTRUCTED ACCORDING TO S.D.D. 3.03. AT ALL OTHER LOCATIONS THE LONGITUDINAL GRADE OF SIDEWALKS SHALL NOT EXCEED 5.0% OR THE ADJACENT STREET GRADE WHICHEVER IS GREATER NOR BE LESS THAN 0.5% AND SHALL DRAIN TOWARD STORM SEWER INLETS. SIDE SLOPES WITHIN TEN FEET OF A PUBLIC SIDEWALK SHALL NOT EXCEED 4.00/1. ALL SIDEWALK AND SIDEWALK RAMP ELEVATIONS AND GRADES SHALL BE FIELD VERIFIED AND SET TO COMPLY WITH THE CITY OF MADISON STANDARD SPECIFICATIONS AND THE A.D.A. GUIDELINES.

OBTAIN A PRINT OUT OF THE ALIGNMENT FROM THE CITY ENGINEER PRIOR TO STAKING THIS PROJECT.

CURB STATION AND OFFSETS SHALL BE TO THE BACK OF CURB UNLESS OTHERWISE INDICATED. CURB ELEVATIONS SHALL BE TO THE TOP OF CURB (OR EXTENDED TOP OF CURB FOR DRIVEWAYS OR RAMPS) UNLESS OTHERWISE INDICATED.

POWER POLES AND OTHER OBSTRUCTIONS SHALL BE MOVED TO PROVIDE 2 FEET MINIMUM OF CLEAR DISTANCE FROM ANY EDGE OF SIDEWALK.

ANY INFORMATION SHOWN ON THIS PLAN, WHICH IS NOT PART OF THIS PROJECT, IS PRELIMINARY AND NOT FOR CONSTRUCTION.

THERE MAY BE EXISTING UTILITIES OR OTHER FEATURES WHICH ARE EITHER NOT SHOWN OR SHOWN INCORRECTLY ON THIS PLAN. IT IS THE RESPONSIBILITY OF THE DEVELOPER TO LOCATE AND IDENTIFY ALL UTILITIES AND TOPOGRAPHY WHICH MAY AFFECT THE CONSTRUCTION OF THESE IMPROVEMENTS.

ALL PERMANENT SIGNING AND POSTING WILL BE DETERMINED AND PROVIDED BY THE TRAFFIC ENGINEERING DIVISION, FOLLOWING CONSTRUCTION OF THESE IMPROVEMENTS.

THE DEVELOPER SHALL PROVIDE, INSTALL AND MAINTAIN ALL STREET END BARRICADES, SIGNING AND TRAFFIC CONTROL, AS REQUIRED BY THE CITY TRAFFIC ENGINEER.

ALL WORK IN THE RIGHT OF WAY AND PUBLIC EASEMENTS SHALL BE IN ACCORDANCE WITH THE CITY OF MADISON STANDARD SPECIFICATIONS FOR PUBLIC WORKS CONSTRUCTION.

THE LOCATION AND INFORMATION FOR PROPOSED NEW TREES, IN THE PUBLIC RIGHT OF WAY OR ON PUBLIC LANDS ARE APPROXIMATE AND ARE SHOWN FOR REFERENCE ONLY. THE LOCATIONS, SPECIFICATIONS AND PLANTING METHODS OF ALL PROPOSED NEW OR REPLACEMENT TREES IN THE PUBLIC RIGHT OF WAY OR ON PUBLIC LANDS SHALL BE APPROVED BY THE CITY FORESTER PRIOR TO INSTALLATION.

NO TREES IN THE RIGHT OF WAY OR ON PUBLIC LANDS SHALL BE TRIMMED, PRUNED, REMOVED OR ADVERSELY AFFECTED IN ANY WAY UNTIL THE DEVELOPER HAS RECEIVED WRITTEN PERMISSION FROM THE CITY ENGINEER OR CITY FORESTER. SAID WRITTEN PERMISSION SHALL INCLUDE LANGUAGE INDICATING THAT SECTION 10.101 OF THE MADISON GENERAL ORDINANCES AND ADMINISTRATIVE PROCEDURE MEMORANDUM NO. 6-2, REFERENCING TO NOTIFICATION OF PROPERTY OCCUPANTS AND/OR OWNERS HAS BEEN COMPLIED WITH.

CONTRACTOR MUST SUBMIT A TRAFFIC CONTROL PLAN TO CITY TRAFFIC ENGINEERING AT LEAST 14 DAYS PRIOR TO THE START OF WORK. WORK SHALL NOT PROCEED UNTIL AN APPROVED TRAFFIC CONTROL PLAN IS IN PLACE.



CONTRACTOR MUST SUBMIT A TRAFFIC CONTROL PLAN TO CITY TRAFFIC ENGINEERING AT LEAST 14 DAYS PRIOR TO THE START OF WORK. WORK SHALL NOT PROCEED UNTIL AN APPROVED TRAFFIC CONTROL PLAN IS IN PLACE.



File: \\WYSESERVER2\Wysr_Engineering\2017\170504_URP - Science Drive Sidewalk\DWG\17-0504_Details.dwg Layout: Details User: Admin Plotted: Oct 04, 2019 - 10:14am

WYSER ENGINEERING

UNIVERSITY RESEARCH PARK
SCIENCE DRIVE SIDEWALK
CITY OF MADISON, DANE COUNTY, WI

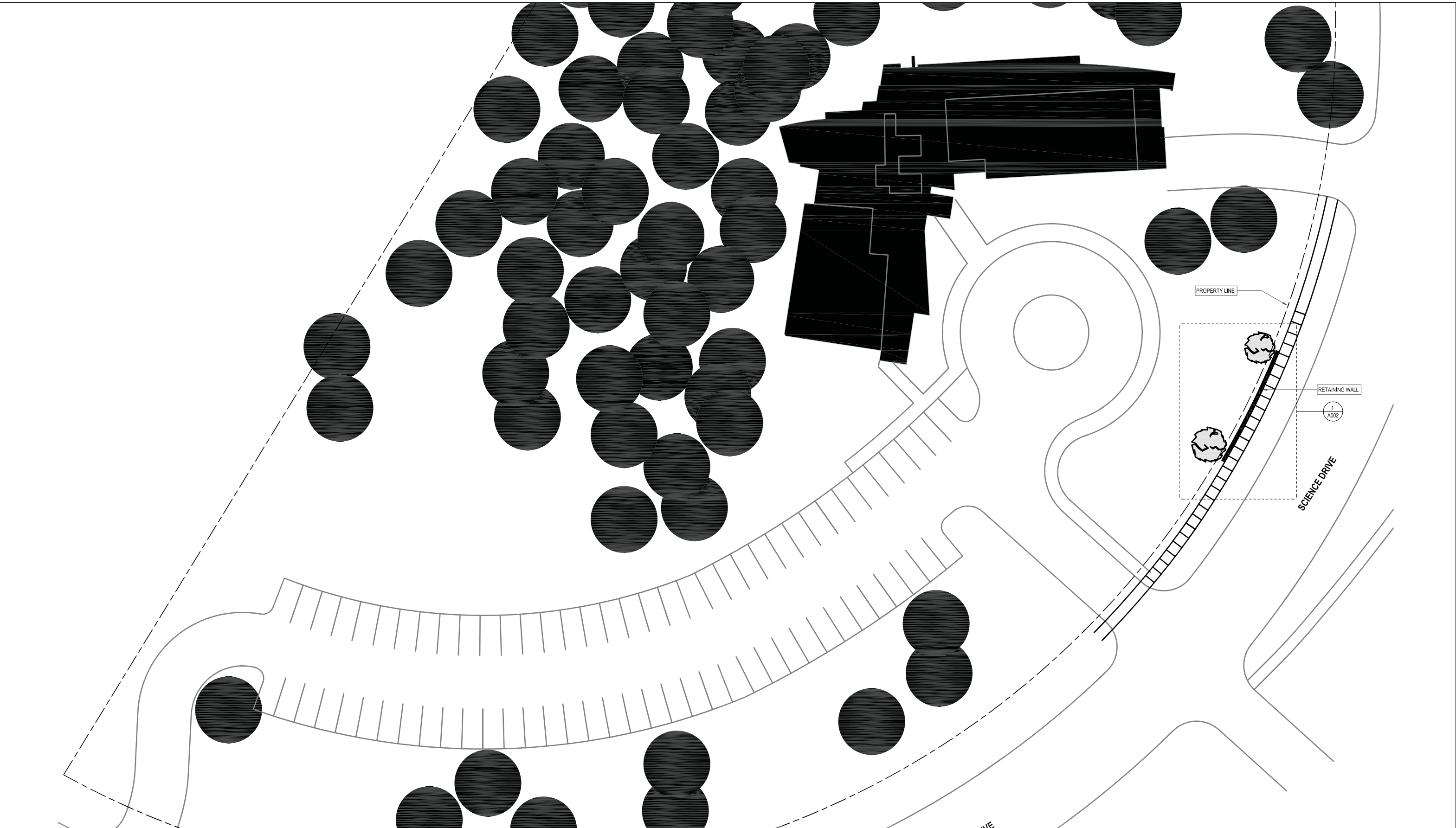
| | |
|------------------------------------|---------------------------------------|
| Sheet Title: | STANDARD NOTES, COMMENTS AND SECTIONS |
| SCIENCE DRIVE MADISON, WI 53711 | |

DIGGERS HOTLINE

Toll Free (800) 242-8511 or- 811
Hearing Impaired TDD (800) 542-2289
www.DiggersHotline.com

| | |
|---------------|-------------------|
| Graphic Scale | 0' 5' 10' 20' 30' |
| 1" = 40' | |
| Revisions: | |
| No. | |
| Date: | |
| Description: | |
| | 10/10/19 CB No. 1 |

| | |
|--------------|------------------|
| Wyser Number | 17-0504 |
| Set Type | FOR CONSTRUCTION |
| Date Issued | 09/04/2019 |
| Sheet Number | D-1 |



 STRANG CITY OF MADISON, DANE COUNTY, WI

UNIVERSITY RESEARCH PARK
SCIENCE DRIVE SIDEWALK

Sheet Title:
ARCHITECTURAL SITE PLAN

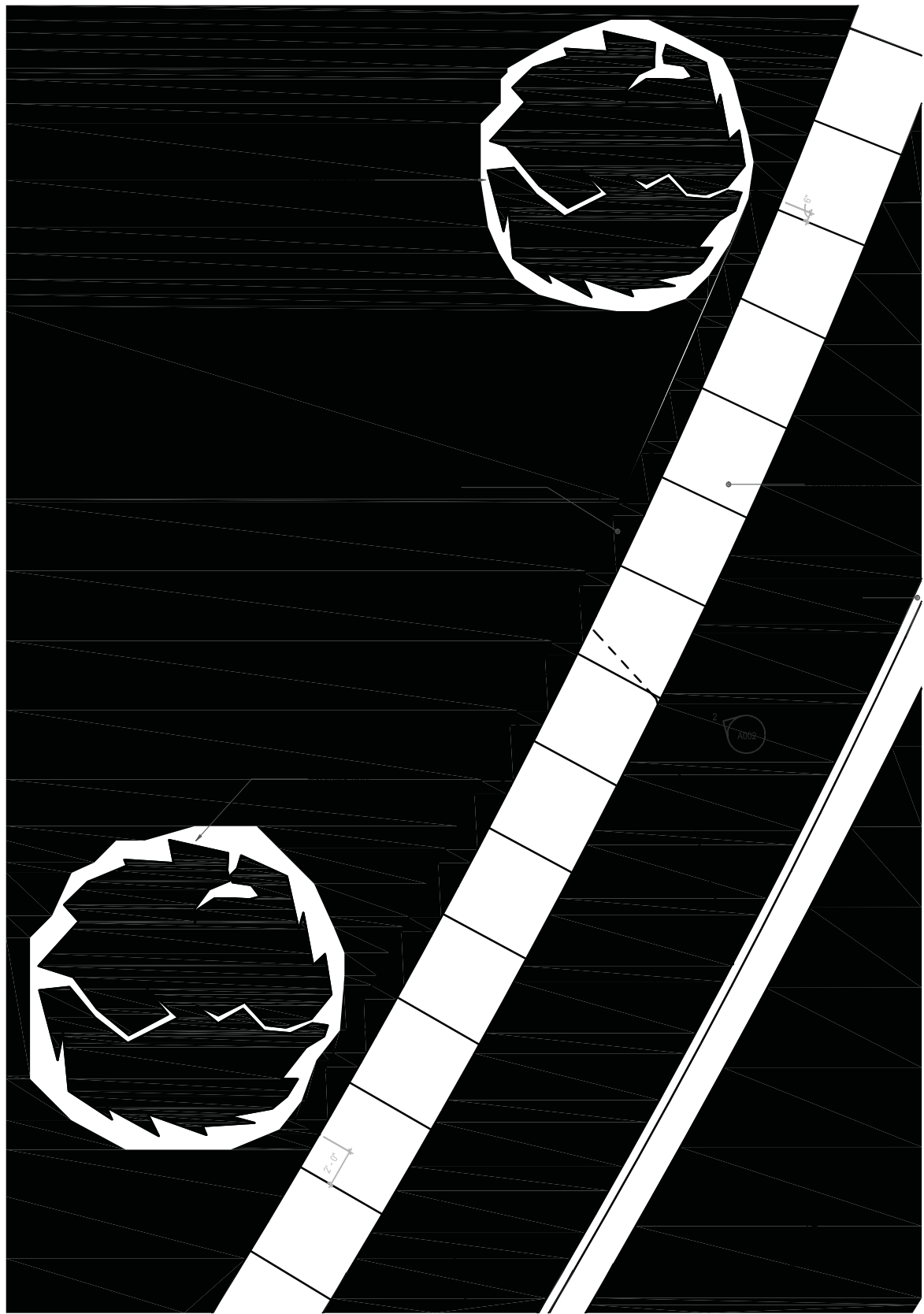
SCIENCE DRIVE
MADISON, WI 53711

DIGGERS HOTLINE
Toll Free (800) 242-8511 or- 811
Hearing Impaired TDD (800) 542-2289
www.DiggerHotline.com

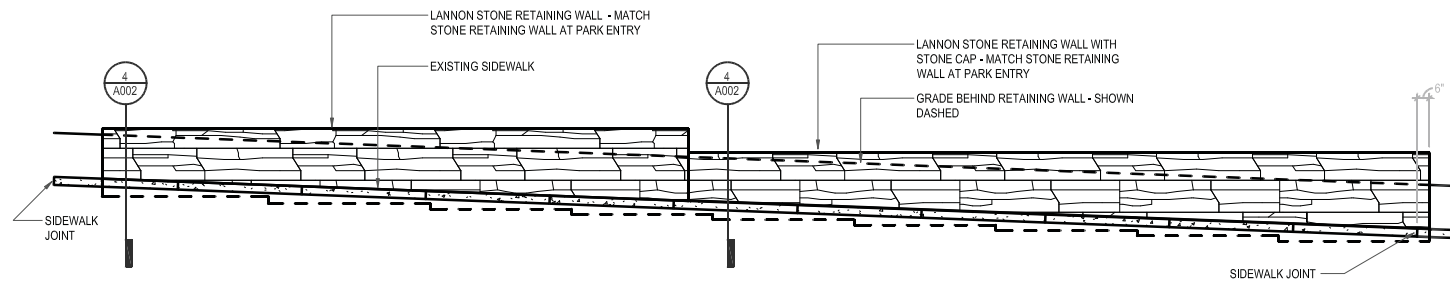
Graphic Scale
0' 5' 10' 20' 30'
1" = 20'

| Revisions: | No. | Date | Description |
|------------|-----|----------|-------------|
| | 1 | 10/10/19 | CB No. 1 |
| | 2 | 10/01/20 | CB No. 2 |
| | | | |
| | | | |
| | | | |
| | | | |
| | | | |
| | | | |
| | | | |
| | | | |
| | | | |
| | | | |
| | | | |
| | | | |

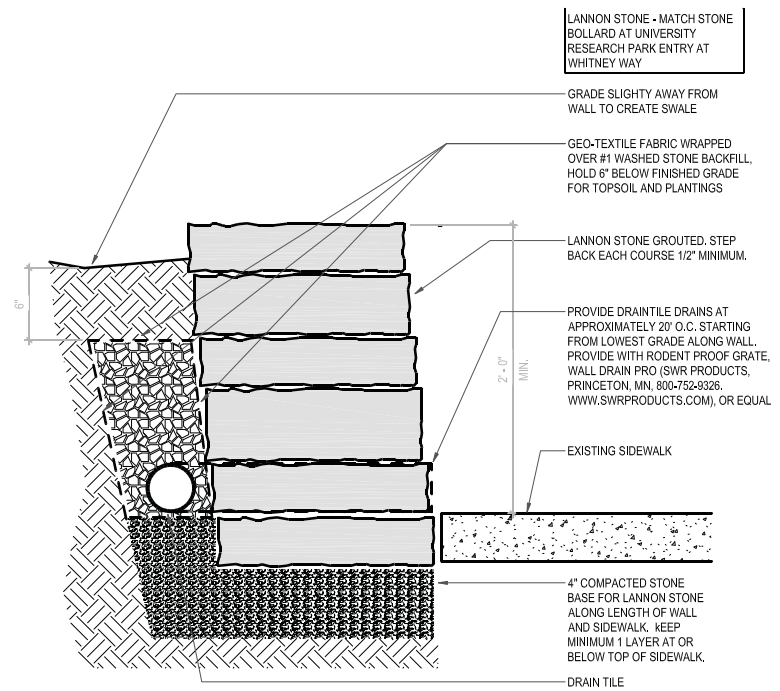
| | |
|--------------|------------------|
| Wyser Number | 17-0504 |
| Set Type | FOR CONSTRUCTION |
| Date Issued | 07/23/2021 |
| Sheet Number | A001 |



PN TN
1
A002
ENLARGED PARTIAL ARCHITECTURAL SITE PLAN
SCALE: 1/4" = 1'-0"



2
A002
RETAINING WALL ELEVATION - LOOKING FROM SCIENCE DRIVE
SCALE: 1/4" = 1'-0"



4
A002
RETAINING WALL SECTION -
SCALE: 1 1/2" = 1'-0"

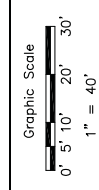


UNIVERSITY RESEARCH PARK
SCIENCE DRIVE SIDEWALK
CITY OF MADISON, DANE COUNTY, WI

Sheet Title:
RETAINING WALL PLAN, ELEVATION AND SECTION
SCIENCE DRIVE
MADISON, WI 53711



Toll Free (800) 242-8511 -or- 811
Hearing Impaired TDD (800) 542-2289
www.DiggersHotline.com



| Revisions: | No. | Date | Description |
|------------|----------|----------|-------------|
| 1 | 10/10/19 | CB No. 1 | |
| 2 | 10/01/20 | CB No. 2 | |
| | | | |
| | | | |
| | | | |
| | | | |
| | | | |
| | | | |
| | | | |

| | |
|--------------|------------------|
| Wyser Number | 17-0504 |
| Set Type | FOR CONSTRUCTION |
| Date Issued | 09/12/2019 |
| Sheet Number | A002 |