

Madison, Wisconsin

# CITY OF MADISON

## CITY ENGINEERING DIVISION

### DEPARTMENT OF PUBLIC WORKS

# PLAN OF PROPOSED IMPROVEMENT

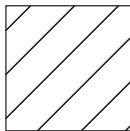
## JANNAH VILLAGE PHASE 1

#### INDEX OF SHEETS

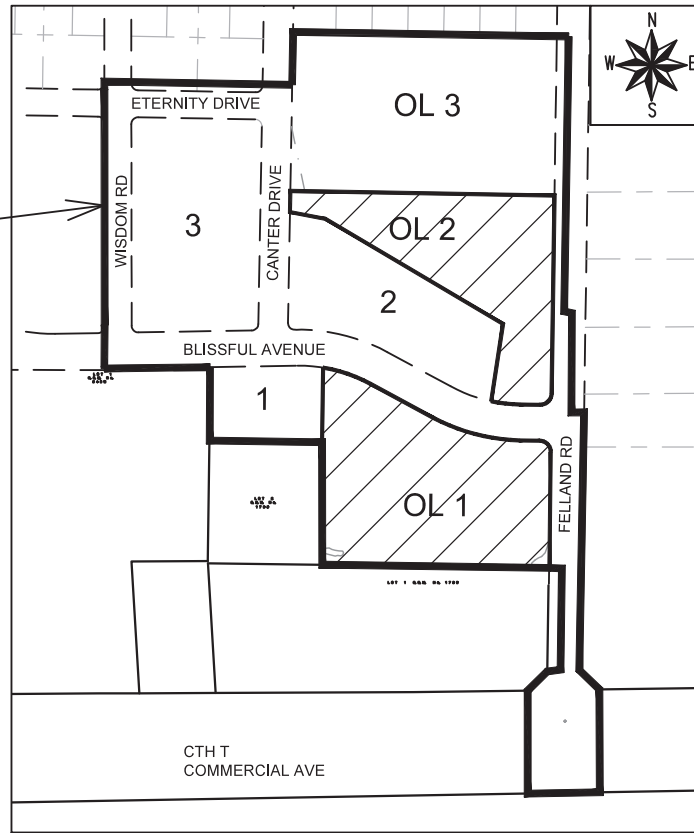
SHEET NO. QE-2 NORTHEAST AND NORTHWEST PONDS PLAN  
SHEET NO. QE-3 SOUTHWEST AND SOUTHEAST PONDS PLAN

CITY PROJECT NO. 12524  
CONTRACT NO. 8344

ADJACENT STREET AND UTILITY PROJECT  
JANNAH VILLAGE PHASE 1  
SEE PROJ. NO. 12523, NO. 8343



= THIS PROJECT



PUBLIC IMPROVEMENT PROJECT APPROVED

FEBRUARY 25, 2020

BY THE COMMON COUNCIL OF MADISON, WISCONSIN

PUBLIC IMPROVEMENT DESIGN APPROVED BY:

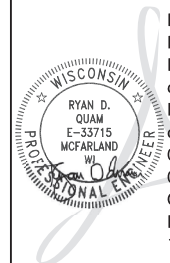
*Greg Fries*

Oct 4, 2021

City Engineer

Date

STORM WATER MANAGEMENT DESIGNED BY:



Digitally signed by Ryan D Quam  
DN: c=US, o=QUAM ENGINEERING LLC, ou=A01410C0000, 0175664B2329000, 00880, cn=Ryan D Quam  
Date: 2021.09.20 10:41:05 -05'00'

PLOT SCALE: 1" = 1'

PLOT NAME: ---

REV. DATE: 8/17/2021 1:58 PM

ORIGINATOR: CITY OF MADISON

**WET DETENTION BASIN CONSTRUCTION SHALL CONFORM TO WISCONSIN DNR TECHNICAL STANDARD #1001**

**INFILTRATION BASIN CONSTRUCTION SHALL CONFORM TO WISCONSIN DNR TECHNICAL STANDARD #1003**

**POND NOTES:**

DURING CONSTRUCTION THE POND SHALL BE OVER-EXCAVATED 1 FOOT TO PROVIDE SEDIMENT STORAGE. THE POND SHALL BE FINAL GRADED FOLLOWING SITE RESTORATION TO THE ELEVATIONS AND SIZE SHOWN ON THE PLANS.

THE BASE OF THE EMBANKMENT SHALL BE STRIPPED OF ALL VEGETATION, STUMPS, TOPSOIL, AND OTHER ORGANIC MATERIAL.

A CORE TRENCH OR KEYWAY SHALL BE CONSTRUCTED IN THE EMBANKMENT.

**POND SEEDING:**

THE DEVELOPER SHALL BE RESPONSIBLE FOR SEEDING AND ESTABLISHING GREENWAYS AND PONDS WITH A NATIVE SPECIES MIX THAT SHALL BE SPECIFIED BY THE CITY OF MADISON. THIS MIX SHALL BE REFERENCED ON THE PLAN SHEET PROVIDED AND SEALED BY THE DEVELOPER'S ENGINEER AND APPROVED BY CITY ENGINEERING.

THE DEVELOPER SHALL HAVE THE INITIAL SEEDING COMPLETED BY AN ECOLOGICAL RESTORATION LANDSCAPING FIRM WITH KNOWLEDGE AND EXPERIENCE IN COMPLETING NATIVE PLANTING/SEEDING. CONTACT THE ENGINEERING GREENWAY VEGETATION COORDINATOR (MADELINE DUMAS, 608-266-9525) FOR A LIST OF APPROPRIATE FIRMS.

THE DEVELOPER SHALL MAINTAIN THE NEWLY SEEDER AREA WITH A GOAL OF NATIVE PLANT ESTABLISHMENT. MAINTENANCE SHALL BE COMPLETED BY AN ECOLOGICAL RESTORATION LANDSCAPING FIRM WITH KNOWLEDGE AND EXPERIENCE IN MAINTAINING NATIVE PLANTINGS.

- i. THIS WILL INCLUDE A REQUIREMENT OF PROVISION OF A PROPOSED COURSE OF ACTION FOR ESTABLISHMENT OF THE NATIVE PLANTING AT THE TIME OF POND/GREENWAY APPROVAL.
- ii. THIS WILL INCLUDE AN ANNUAL REPORT OF ACTIONS COMPLETED (MOWING, BURNING, PESTICIDE APPLICATION, ETC.) TO CITY ENGINEERING ANNUALLY UNTIL THE POND/GREENWAY IS ACCEPTED.

PRIOR TO FINAL ACCEPTANCE OF THE POND/GREENWAY THE DEVELOPER SHALL PROVIDE A SHORT REPORT TO THE CONDITION OF THE NATIVE PLANTING. THIS REPORT SHALL INCLUDE RECOMMENDED ACTIONS FOR THE NEXT YEAR.

**INFILTRATION NOTES:**

1. INFILTRATION BASIN CONSTRUCTION SHALL CONFORM TO WISCONSIN DNR TECHNICAL STANDARD #1003.

2. ESTABLISHMENT - COVER CROPS NEED TO BE APPLIED IN CONJUNCTION WITH THE INITIAL SEEDING OF PERMANENT VEGETATION. WHEN ESTABLISHING TURF TYPE GRASS, USE THE CRITERIA CONTAINED IN THE WDRS CONSERVATION PRACTICE STANDARD SEEDING FOR CONSTRUCTION SITE EROSION CONTROL (1059). SOIL SHALL NOT BE USED IF TURF GRASS IS UTILIZED. THE BASIN CANNOT BE USED FOR RECREATIONAL PURPOSES DUE TO COMPACTION CONCERNS.

3. NATIVE SEEDING - NATIVE VEGETATION SHALL BE ESTABLISHED IN CONFORMANCE WITH RECOMMENDATIONS FROM A QUALIFIED NATIVE NURSERY IN THE AREA. IF TREES ARE TO BE USED, SPECIES SHALL BE SELECTED THAT WILL NOT INTERFERE WITH THE FUNCTION OF THE BASIN, OR CAUSE MAINTENANCE PROBLEMS. SECTION IX REFERENCES, LISTS SOURCES THAT PROVIDE SUGGESTED SEED MIXTURES. NATIVE (PRAIRIE) SEEDING SHALL BE COMPLETED IN THE FALL (AS DORMANT SEEDING PRIOR TO FIRST SNOWFALL) OR IN THE SPRING (BETWEEN MAY 1 AND JUNE 20), OR PLUGS SHALL BE USED.

4. FERTILIZER - SOIL TESTING SHALL BE USED TO DETERMINE PROPER APPLICATIONS FOR NUTRIENTS AND LIMING. FERTILIZER APPLICATION SHALL CONFORM TO THE CRITERIA LOCATED IN NRCS CONSERVATION PRACTICE TECHNICAL STANDARD, CRITICAL AREA PLANTING (342) OR WDRS CONSERVATION PRACTICE STANDARD SEEDING FOR CONSTRUCTION SITE EROSION CONTROL (1059).

5. MULCH - MULCH SHALL CONFORM TO THE CRITERIA LOCATED IN WDRS CONSERVATION PRACTICE STANDARD MULCHING FOR CONSTRUCTION SITES (1058).

6. ONCE CONSTRUCTION OF THE INFILTRATION DEVICE BEGINS, THE INFILTRATION DEVICE SHALL BE CORDONED OFF AND PROTECTED FROM COMPACTION FROM HEAVY EQUIPMENT.

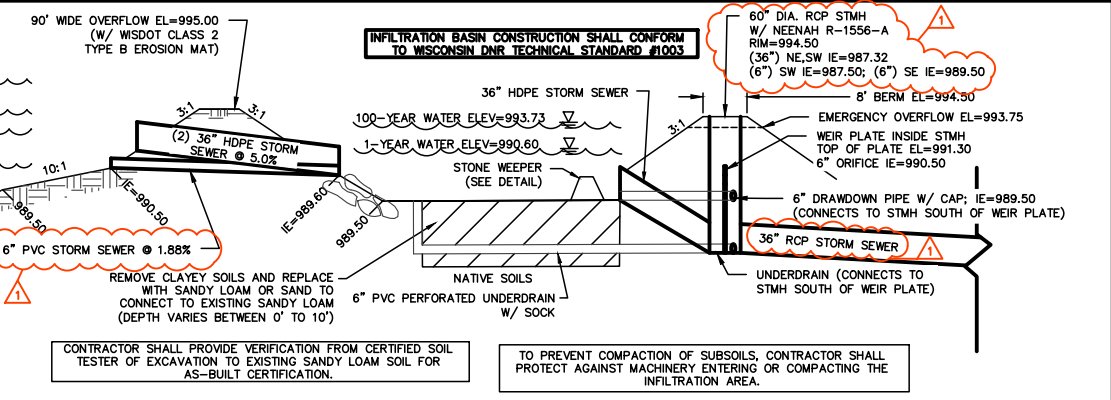
7. CONSTRUCTION OF INFILTRATION POND SHALL BE SUSPENDED IN PERIODS OF RAINFALL, PONDED AND SNOWMELT AND SHALL REMAIN SUSPENDED IF PONDED WATER IS PRESENT.

8. THE CONTRACTOR SHALL CONTACT THE CITY OF MADISON ENGINEER DURING EXCAVATION OF THE INFILTRATION POND FOR INSPECTION.

9. INFILTRATION BASIN FOOTPRINT SHALL BE SEEDING WITH INFILTRATION SEED MIX PER CITY OF MADISON SPECIFICATIONS.

11. CONTRACTOR SHALL BE RESPONSIBLE FOR 90% ESTABLISHMENT OF INFILTRATION BASIN PLANTINGS. CONTRACTOR SHALL EITHER TEMPORARILY PLUG THE PIPES DISCHARGING TO THE INFILTRATION BASIN AND PROVIDE A PUMPING PLAN OR CONSTRUCT A STORMWATER BYPASS TO ROUTE THE 1-YEAR EVENT AROUND THE INFILTRATION BASIN.

**NORTH WET DETENTION POND/INFILTRATION BASIN CROSS SECTION**

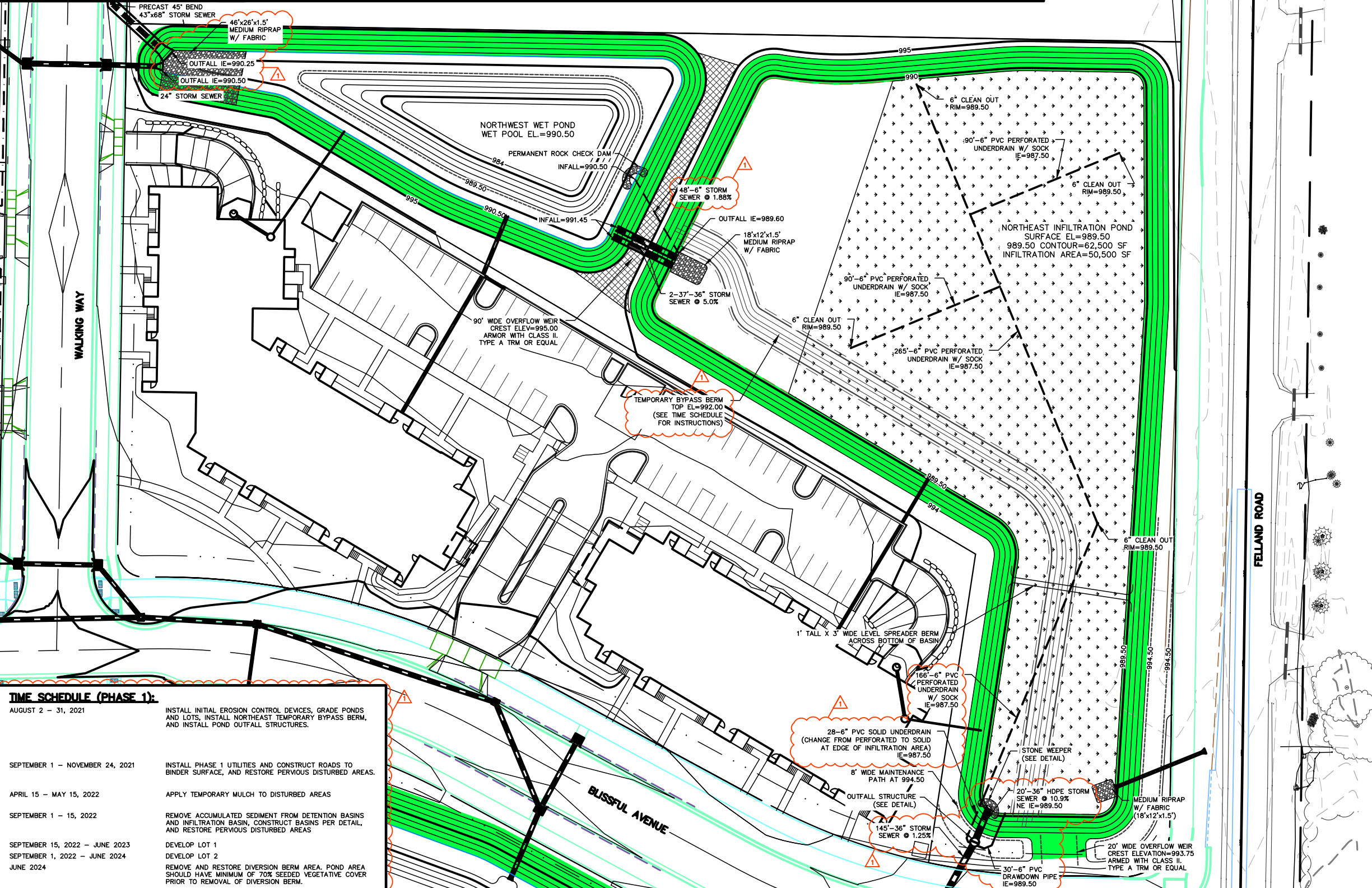
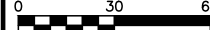


**LEGEND:**

- REMOVE CLAYEY SOILS AND REPLACE WITH SANDY LOAM OR SAND TO CONNECT TO EXISTING SANDY LOAM (DEPTH VARIES BETWEEN 0' TO 10')
- INSTALL WISDOT CLASS I, TYPE B EROSION MAT

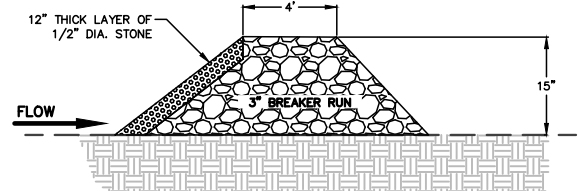
CONTRACTOR SHALL PROVIDE VERIFICATION FROM CERTIFIED SOIL TESTER OF EXCAVATION TO EXISTING SANDY LOAM SOIL FOR AS-BUILT CERTIFICATION.

TO PREVENT COMPACTION OF SUBSOILS, CONTRACTOR SHALL PROTECT AGAINST MACHINERY ENTERING OR COMPACTING THE INFILTRATION AREA.

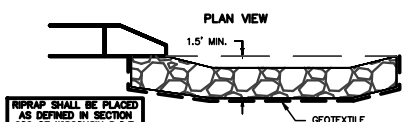
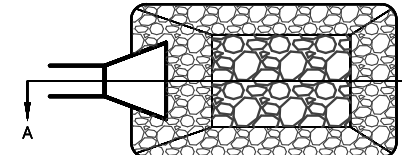


**TIME SCHEDULE (PHASE 1):**

AUGUST 2 - 31, 2021	INSTALL INITIAL EROSION CONTROL DEVICES, GRADE PONDS AND LOTS, INSTALL NORTHEAST TEMPORARY BYPASS BERM, AND INSTALL POND OUTFALL STRUCTURES.
SEPTEMBER 1 - NOVEMBER 24, 2021	INSTALL PHASE 1 UTILITIES AND CONSTRUCT ROADS TO BINDER SURFACE, AND RESTORE PVIOUS DISTURBED AREAS.
APRIL 15 - MAY 15, 2022	APPLY TEMPORARY MULCH TO DISTURBED AREAS
SEPTEMBER 1 - 15, 2022	REMOVE ACCUMULATED SEDIMENT FROM DETENTION BASINS AND INFILTRATION BASIN, CONSTRUCT BASINS PER DETAIL, AND RESTORE PVIOUS DISTURBED AREAS
SEPTEMBER 15, 2022 - JUNE 2023	DEVELOP LOT 1
SEPTEMBER 1, 2022 - JUNE 2024	DEVELOP LOT 2
JUNE 2024	REMOVE AND RESTORE DIVERSION BERM AREA. POND AREA SHOULD HAVE MINIMUM OF 70% SEEDER VEGETATIVE COVER PRIOR TO REMOVAL OF DIVERSION BERM.



**STONE WEEPER DETAIL**



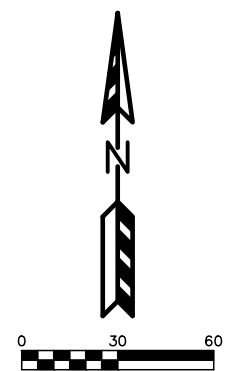
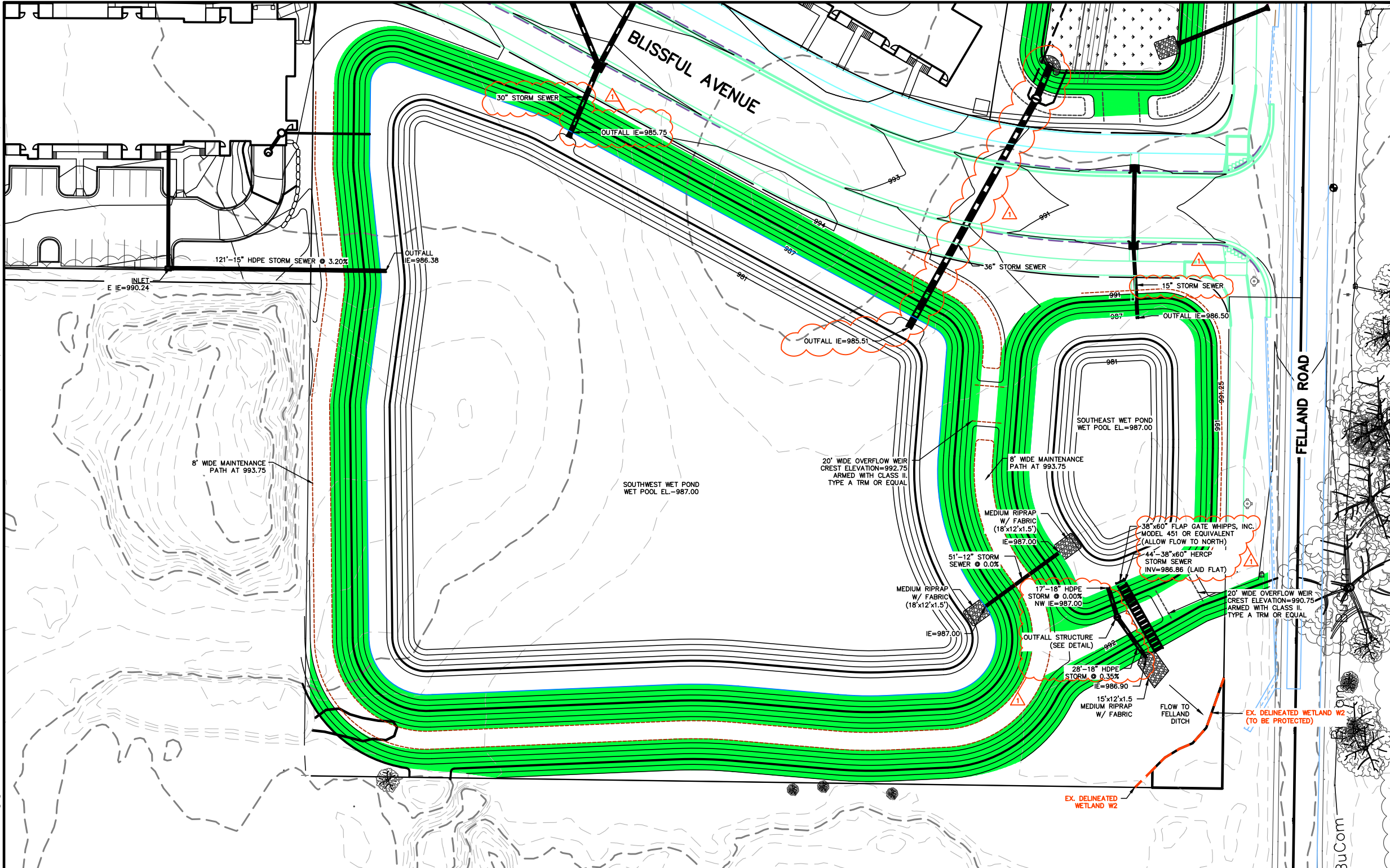
RIPRAP SHALL BE PLACED AS DEFINED IN SECTION 600 OF WISCONSIN D.O.T. SPECIFICATIONS. STONE SIZES SHALL BE WELL GRADED WITH A MINIMUM OF 8 INCH DIAMETER.


**RIPRAP DETAIL**

**JANNAH VILLAGE - PHASE 1**  
**NORTHEAST AND NORTHWEST PONDS PLAN**  
 SHEET: QE-2  
 DATED: NOVEMBER 2, 2021 **CONSTRUCTION BULLETIN 1**

**QUAM ENGINEERING, LLC**  
 Residential and Commercial Site Design Consultants  
 www.quamengineering.com  
 4604 Siggelkow Road, Suite A - McFarland, Wisconsin 53558  
 Phone (608) 838-7750; Fax (608) 838-7752





**LEGEND:**  
 - INSTALL WSDOT CLASS I, TYPE B EROSION MAT

TO OBTAIN LOCATION OF PARTICIPANTS' UNDERGROUND FACILITIES BEFORE YOU DIG IN WISCONSIN  
**CALL DIGGERS HOTLINE**  
**1-800-242-8511**  
**TOLL FREE**  
 TDD(FOR THE HEARING IMPAIRED)(800)542-2289  
 WIS. STATUTE 182.0175 (1974)  
 REQUIRES MIN. OF 3 WORK DAYS NOTICE BEFORE YOU EXCAVATE

**POND NOTES:**  
 DURING CONSTRUCTION THE POND SHALL BE OVER-EXCAVATED 1 FOOT TO PROVIDE SEDIMENT STORAGE. THE POND SHALL BE FINAL GRADED FOLLOWING SITE RESTORATION TO THE ELEVATIONS AND SIZE SHOWN ON THE PLANS.  
 THE BASE OF THE EMBANKMENT SHALL BE STRIPPED OF ALL VEGETATION, STUMPS, TOPSOIL, AND OTHER ORGANIC MATERIAL.  
 A CORE TRENCH OR KEYWAY SHALL BE CONSTRUCTED IN THE EMBANKMENT.  
 MEASURES SHALL BE TAKEN TO MINIMIZE SEEPAGE ALONG ANY CONDUIT BURIED IN THE EMBANKMENT.

**POND SEEDING:**  
 THE DEVELOPER SHALL BE RESPONSIBLE FOR SEEDING AND ESTABLISHING GREENWAYS AND PONDS WITH A NATIVE SPECIES MIX THAT SHALL BE SPECIFIED BY THE CITY OF MADISON. THIS MIX SHALL BE REFERENCED ON THE PLAN SHEET PROVIDED AND SEALED BY THE DEVELOPER'S ENGINEER AND APPROVED BY CITY ENGINEERING.  
 THE DEVELOPER SHALL HAVE THE INITIAL SEEDING COMPLETED BY AN ECOLOGICAL RESTORATION LANDSCAPING FIRM WITH KNOWLEDGE AND EXPERIENCE IN COMPLETING NATIVE PLANTING/SEEDING. CONTACT THE ENGINEERING GREENWAY VEGETATION COORDINATOR (MADELINE DUMAS, 608-266-9525) FOR A LIST OF APPROPRIATE FIRMS.  
 THE DEVELOPER SHALL MAINTAIN THE NEWLY SEEDDED AREA WITH A GOAL OF NATIVE PLANT ESTABLISHMENT. MAINTENANCE SHALL BE COMPLETED BY AN ECOLOGICAL RESTORATION LANDSCAPING FIRM WITH KNOWLEDGE AND EXPERIENCE IN MAINTAINING NATIVE PLANTINGS.  
 I. THIS WILL INCLUDE A REQUIREMENT OF PROVISION OF A PROPOSED COURSE OF ACTION FOR ESTABLISHMENT OF THE NATIVE PLANTING AT THE TIME OF POND/GREENWAY APPROVAL.  
 II. THIS WILL INCLUDE AN ANNUAL REPORT OF ACTIONS COMPLETED (MOWING, BURNING, PESTICIDE APPLICATION, ETC.) TO CITY ENGINEERING ANNUALLY UNTIL THE POND/GREENWAY IS ACCEPTED.  
 PRIOR TO FINAL ACCEPTANCE OF THE POND/GREENWAY THE DEVELOPER SHALL PROVIDE A SHORT REPORT TO THE CONDITION OF THE NATIVE PLANTING. THIS REPORT SHALL INCLUDE RECOMMENDED ACTIONS FOR THE NEXT YEAR.

**JANNAH VILLAGE - PHASE 1**  
**SOUTHWEST AND SOUTHEAST PONDS PLAN**  
 SHEET: QE-3  
 DATED: NOVEMBER 2, 2021 CONSTRUCTION BULLETIN 1

**QUAM ENGINEERING, LLC**  
 Residential and Commercial Site Design Consultants  
  
 www.quamengineering.com  
 4604 Siggeikow Road, Suite A - McFarland, Wisconsin 53558  
 Phone (608) 838-7750; Fax (608) 838-7752

