



Madison, Wisconsin

# CITY OF MADISON

## CITY ENGINEERING DIVISION

### DEPARTMENT OF PUBLIC WORKS

# PLAN OF PROPOSED IMPROVEMENT

## 7718 MINERAL POINT RD

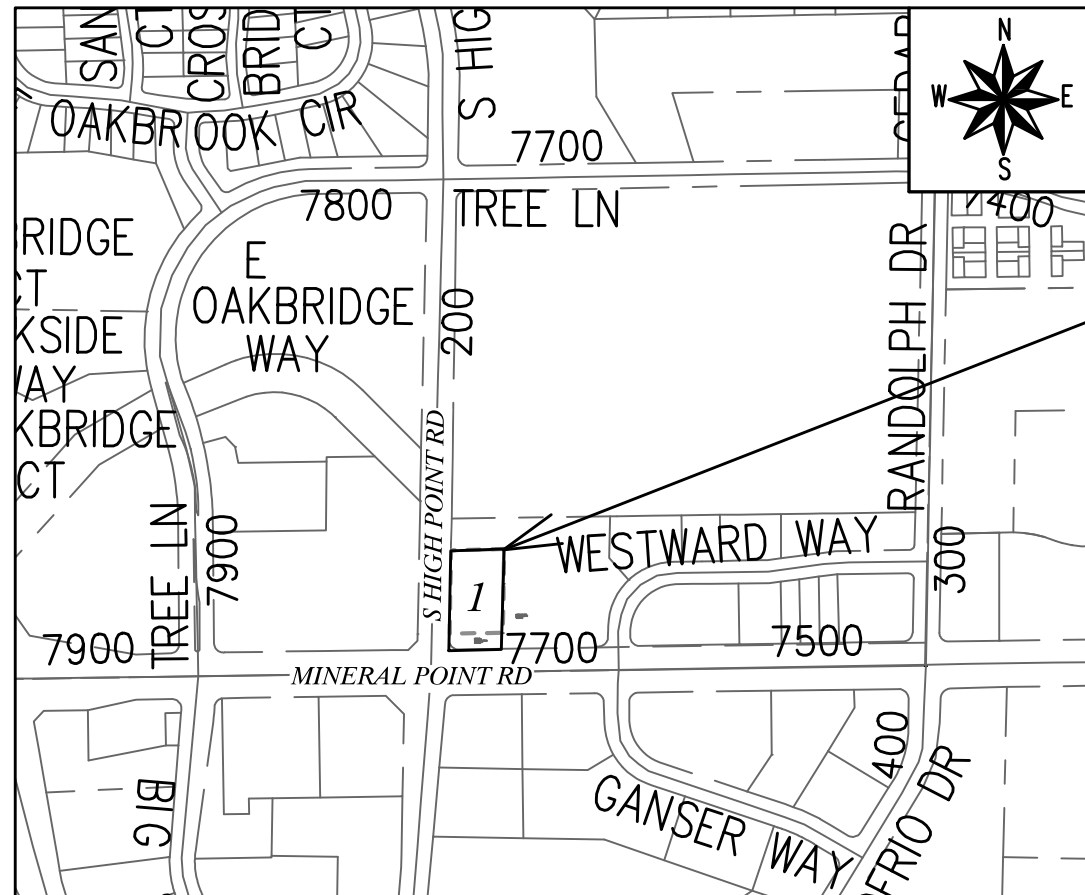
CITY PROJECT NO. 13028

CONTRACT NO. 8925

MUNIS NO. 13028

#### INDEX OF SHEETS

SHEET NO.	NOTES AND DETAILS
D1-D2	NOTES AND DETAILS
E1-E2	ELECTRICAL PLAN
P1-P2	SIDEWALK PLAN & PROFILES
U1	UTILITY PLAN
L1	LANDSCAPING PLAN
MN1	MAINTENANCE MAP



**PROJECT  
LOCATION**

PUBLIC IMPROVEMENT PROJECT  
APPROVED

JULY 14, 2020

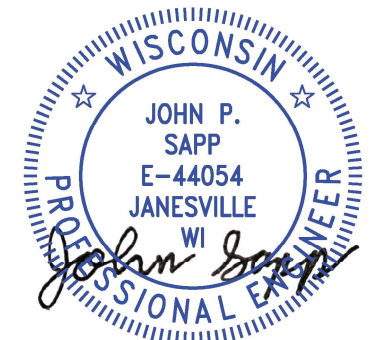
BY THE COMMON COUNCIL  
OF MADISON, WISCONSIN

PUBLIC IMPROVEMENT DESIGN  
APPROVED BY:

*EN- Greg Friss* Sep 27, 2020

City Engineer Date

SIDEWALK  
DESIGNED BY:

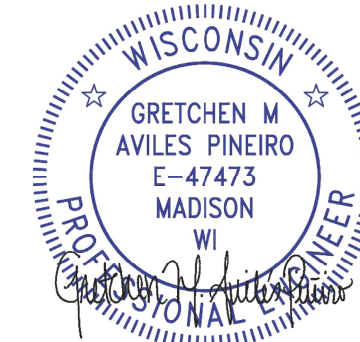


Sep 25, 2020

SANITARY SEWER  
DESIGNED BY:

**LATERALS  
ONLY**

ELECTRICAL PLAN  
DESIGNED BY:



Sep 25, 2020

WATER  
DESIGNED BY:

**LATERALS  
ONLY**

PLOT SCALE: 1 IN:1 FT\_XREF

PLOT NAME: ---


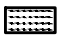

REV. DATE: 9/25/2020 3:31 PM

ORIGINATOR: CITY\_OF\_MADISON

THE LOCATION AND INFORMATION FOR PROPOSED NEW TREES, IN THE PUBLIC RIGHT OF WAY OR ON PUBLIC LANDS ARE APPROXIMATE AND ARE SHOWN FOR REFERENCE ONLY. THE LOCATIONS, SPECIFICATIONS AND PLANTING METHODS OF ALL PROPOSED NEW OR REPLACEMENT TREES IN THE PUBLIC RIGHT OF WAY OR ON PUBLIC LANDS SHALL BE APPROVED BY THE CITY FORESTER PRIOR TO INSTALLATION.

NO TREES IN THE RIGHT OF WAY OR ON PUBLIC LANDS SHALL BE TRIMMED, PRUNED, REMOVED OR ADVERSELY AFFECTED IN ANY WAY UNTIL THE DEVELOPER HAS RECEIVED WRITTEN PERMISSION FROM THE CITY ENGINEER OR CITY FORESTER. SAID WRITTEN PERMISSION SHALL INCLUDE LANGUAGE INDICATING THAT SECTION 10.101 OF THE MADISON GENERAL ORDINANCES AND ADMINISTRATIVE PROCEDURE MEMORANDUM NO. 6-2, REFERRING TO NOTIFICATION OF PROPERTY OCCUPANTS AND/OR OWNERS, HAS BEEN COMPLIED WITH.

DEVELOPER MUST SUBMIT A TRAFFIC CONTROL PLAN TO CITY TRAFFIC ENGINEERING AT LEAST 14 DAYS PRIOR TO THE START OF WORK. WORK SHALL NOT PROCEED UNTIL AN APPROVED TRAFFIC CONTROL PLAN IS IN PLACE

CONVENTIONAL SIGNS	
FIELD VERIFY ALL UTILITY LOCATIONS	
GAS	—— G ——
STORM SEWER	—— ST ——
SANITARY SEWER	—— SAN ——
WATER	—— W ——
BURIED ELECTRIC	—— E ——
OVERHEAD ELECTRIC	—— OH ——
POWER POLE	
ADA COMPLIANT RAMP W/ DETECTABLE WARNING FIELD	
COMBUSTIBLE FLUIDS	

ALL PAVEMENT IN THE MINERAL POINT RD RIGHT-OF-WAY SHALL BE 9" CONCRETE PAVEMENT.

ALL PAVEMENT IN THE S HIGH POINT ROAD RIGHT-OF-WAY SHALL BE TYPE B PAVEMENT PER STANDARD DETAIL DRAWING 4.02.

UNDERDRAINS SHALL BE INSTALLED PER STANDARD DETAIL DRAWING 4.05 FOR 75' ON EACH SIDE OF THE LOW POINT, OR TO THE NEAREST CURB HIGH POINT. ALL UNDERDRAIN SHALL BE WRAPPED.

ALL GUTTERS SHALL DRAIN WITH A MINIMUM GRADE OF 0.5% TOWARD STORM SEWER INLETS.

ALL DITCHES SHALL DRAIN WITH A MINIMUM GRADE OF 0.5%

THE CROSS SLOPE OF SIDEWALKS AND BARRIER FREE SIDEWALK CURB RAMPS SHALL TYPICALLY BE 1.5%. THE LONGITUDINAL GRADE OF BARRIER FREE SIDEWALK CURB RAMPS SHALL NOT EXCEED 8.33%. ALL SIDEWALK RAMPS SHALL BE CONSTRUCTED ACCORDING TO S.D.D. 3.04. AT ALL OTHER LOCATIONS THE LONGITUDINAL GRADE OF SIDEWALKS SHALL NOT EXCEED 5.0 % OR THE ADJACENT STREET GRADE WHICHEVER IS GREATER NOR BE LESS THAN 0.5% AND SHALL DRAIN TOWARD STORM SEWER INLETS. SIDE SLOPES WITHIN TEN FEET OF A PUBLIC SIDEWALK SHALL NOT EXCEED 4:1. ALL SIDEWALK AND SIDEWALK RAMP ELEVATIONS AND GRADES SHALL BE FIELD VERIFIED AND SET TO COMPLY WITH THE CITY OF MADISON STANDARD SPECIFICATIONS AND THE A.D.A. GUIDELINES.

OBTAIN A PRINT OUT OF THE ALIGNMENTS FROM THE CITY PROJECT ENGINEER PRIOR TO STAKING THIS PROJECT.

CURB STATION AND OFFSETS SHALL BE TO THE EDGE OF PAVEMENT UNLESS OTHERWISE INDICATED. CURB ELEVATIONS SHALL BE TO THE EDGE OF PAVEMENT UNLESS OTHERWISE INDICATED.

POWER POLES AND OTHER OBSTRUCTIONS SHALL BE MOVED TO PROVIDE 2 FEET MINIMUM OF CLEAR DISTANCE FROM ANY FACE OF CURB OR EDGE OF SIDEWALK.

ANY INFORMATION SHOWN ON THIS PLAN, WHICH IS NOT PART OF THIS RIGHT-OF-WAY PROJECT, IS PRELIMINARY AND NOT FOR CONSTRUCTION.

THERE MAY BE EXISTING UTILITIES OR OTHER FEATURES WHICH ARE EITHER NOT SHOWN OR SHOWN INCORRECTLY ON THIS PLAN. IT IS THE RESPONSIBILITY OF THE DEVELOPER TO LOCATE AND IDENTIFY ALL UTILITIES AND TOPOGRAPHY WHICH MAY AFFECT THE CONSTRUCTION OF THESE IMPROVEMENTS.

ALL PERMANENT SIGNING AND POSTING WILL BE DETERMINED AND PROVIDED BY THE TRAFFIC ENGINEERING DIVISION, FOLLOWING CONSTRUCTION OF THESE IMPROVEMENTS.

THE DEVELOPER SHALL PROVIDE, INSTALL AND MAINTAIN ALL STREET END BARRICADES, SIGNING AND TRAFFIC CONTROL, AS REQUIRED BY THE CITY TRAFFIC ENGINEER.

PAVEMENT SAWCUTS SHALL BE AS DIRECTED BY THE CITY CONSTRUCTION ENGINEER. SAWCUTS SHOWN ON THE PLAN ARE APPROXIMATE.

CURB ON CUL DE SACS SHALL BE INSTALLED ACCORDING TO S.D.D 3.05.

ALL WORK IN THE RIGHT OF WAY AND PUBLIC EASEMENTS SHALL BE IN ACCORDANCE WITH THE CITY OF MADISON STANDARD SPECIFICATIONS FOR PUBLIC WORKS CONSTRUCTION



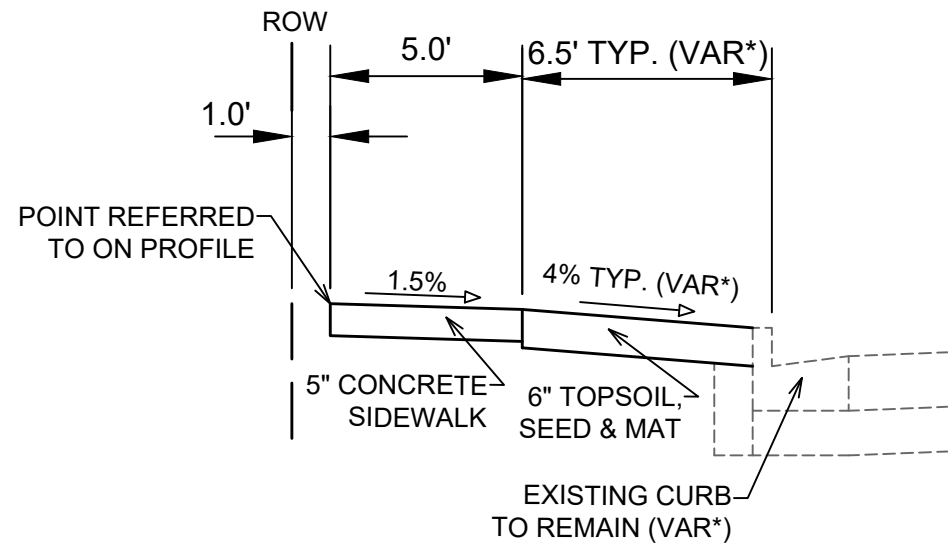
MARK	REVISION	DATE	BY
13028		9/23/2020 4:47 PM	
Scale: #####			D-1

13028  
MADISON, WI  
8925  
CONTRACT NO:

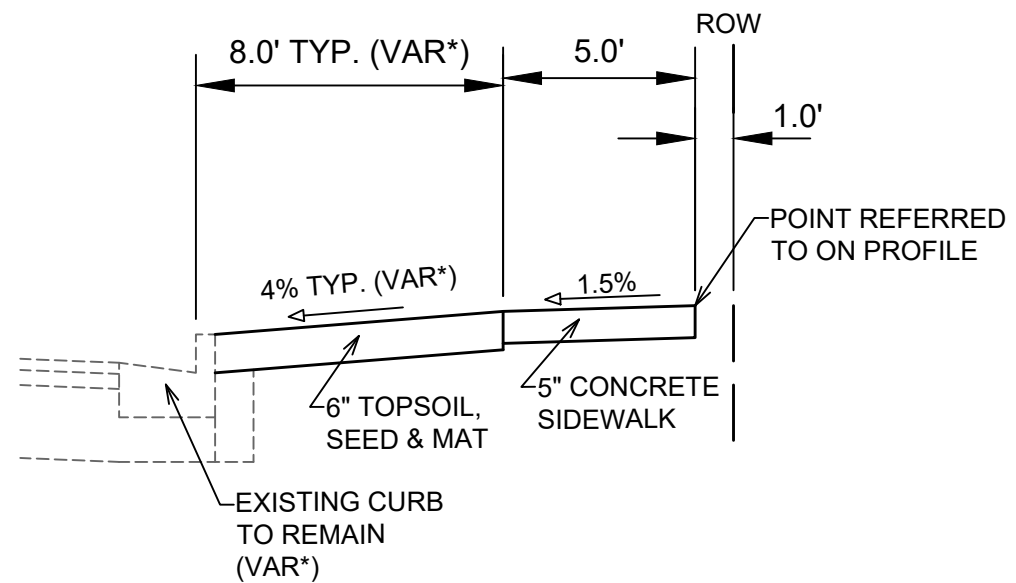
STANDARD NOTES AND COMMENTS  
7718 MINERAL POINT RD  
M:\DESIGN\Projects\13028\CAD\Streets\13028EN-Details.dwg



13028  
D-1



**TYPICAL SECTION**  
MINERAL POINT RD SIDEWALK



**TYPICAL SECTION**  
S HIGH POINT RD SIDEWALK

**NOTES:**

- MINERAL POINT ROAD SHALL BE CONSTRUCTED AS 9" CONCRETE PAVEMENT

- S HIGH POINT ROAD SHALL BE CONSTRUCTED AS TYPE 'B' PAVEMENT PER CITY OF MADISON MINIMUM PAVEMENT DESIGN†

\* SEE PLAN AND PROFILE FOR SLOPES, ELEVATIONS AND OFFSETS

CITY OF MADISON MINIMUM PAVEMENT DESIGN†

TYPE	CRUSHED AGGREGATE BASE COURSE		ASPHALTIC CONCRETE PAVEMENT			
	LOWER LAYER GRADATION 1	UPPER LAYER GRADATION 2	LOWER LAYER		UPPER LAYER	
			TYPE	THICKNESS	TYPE	THICKNESS
A	6"	6"	4 LT 58-28 S	1.75"	4 LT 58-28 S	1.75"
B	6"	6"	3 LT 58-28 S	2.50"	4 LT 58-28 S	2.00"
C	6"	6"	3 MT 58-28 S/H	3.50"	4 MT 58-28 S/H	2.00"

MARK	REVISION	DATE	BY
13028		9/23/2020 4:47 PM	
Scale: #####			D-2

13028  
MADISON, WI  
8925  
CONTRACT NO:

TYPICAL SECTIONS  
7718 MINERAL POINT RD  
M:\DESIGN\Projects\13028\CAD\Streets\13028EN-Details.dwg



13028  
D-2

MATCHLINE STA 21+50

S HIGH POINT RD

GENERAL ELECTRICAL NOTES:

1. ALL LOCATIONS ARE APPROXIMATE. TRAFFIC ENGINEER SHALL APPROVE FINAL LOCATIONS INCLUDING SETBACK IN THE FIELD. AFTER CONTRACTOR SURVEYS STAKING, THE CONTRACTOR SHALL NOTIFY GRETCHEN AVILES PINEIRO (266-4899), AT LEAST 24-HOURS IN ADVANCE OF NEEDING BASE LOCATION MARKED.
2. THE CONTRACTOR SHALL DO ALL WORK IN ACCORDANCE WITH CITY OF MADISON STANDARD SPECIFICATIONS FOR PUBLIC WORKS CONSTRUCTION 2020 EDITION AND ALL ADDENDUMS THERETO.
3. ALL CONDUIT SHALL BE PVC SCHEDULE 80 UNDER PAVEMENT OR SCHEDULE 40 OTHERWISE. PULL WIRE REQUIRED AS PER STANDARD SPECIFICATIONS.
4. THE CONTRACTOR SHALL CALL TROY VANT (395-1975) AT THE TRAFFIC ENGINEERING SHOP AT LEAST 24-HOURS IN ADVANCE OF POURING BASES AND BURYING CONDUIT TO ARRANGE FOR INSPECTION.
5. THE FOLLOWING CITY FURNISHED MATERIALS ARE TO BE PICKED UP AT THE TRAFFIC OPERATIONS SHOP, 1120 SAYLE STREET. NOTIFY ED SMITH AT 266-9034 TWENTY FOUR (24) HOURS PRIOR TO PICKING UP THE MATERIAL:

- 1" X 40" ANCHOR BOLTS: 8
- 3/4" X 19" ANCHOR BOLTS: 8

- REMOVE EXISTING BASE
- INSTALL NEW LB-3 BASE

REMOVAL NOTES:

EXISTING TRAFFIC SIGNAL POLES WILL BE REMOVED ONCE TEMPORARY SIGNAL IS OPERATIONAL. EXISTING STREETLIGHT BASES CAN BE REMOVED ONCE NEW STREETLIGHTS ARE OPERATIONAL AND INSTALLED. COORDINATE BASE REMOVALS WITH TE SHOP (TROY VANT, 395-1975). TE WILL REMOVE POLES AND ATTACHMENTS.

- (1)-2" PVC
- REMOVE EXISTING SIGNAL BASE
- INSTALL NEW HANDHOLE TYPE 1 INTERCEPTING CONDUITS
- INSTALL TEMPORARY WOOD POLE

- (1)-2" PVC SCH40
- INSTALL NEW G BASE
- STA: 20+02 OFF: 6.25 L

- (1)-3" & (1)-2" PVC SCH40
- INSTALL NEW G BASE
- STA: 10+03
- OFF: 5.88 R

- (1)-2" PVC SCH 40

INSTALL TEMPORARY WOOD POLE, FOR TE USE FOR TEMPORARY SIGNALS. REMOVE ONCE NEW SIGNALS ARE OPERATIONAL.

- REMOVE EXISTING SIGNAL BASE
- INSTALL NEW TYPE 5 HANDHOLE INTERCEPTING CONDUITS

MAINTAIN EXISTING

MINERAL POINT RD

- INTERCEPT EXISTING CONDUIT, MATCH & EXTEND TO NEW HANDHOLE

REVISED 11/10/2020 - GMA  
ADJUSTED G BASES AND  
CONDUIT LOCATION.

BANKERS' BANK OF  
7700 MINERAL POINT RD  
PARCEL NO:  
070823302134

PARCEL NO:  
070823397602  
7718 W MINERAL POINT RD  
35,509 SQ. FT.  
0.815 ACRES

MARK	REVISION	DATE	BY
13028	ADJUST BASE & CONDUIT LOCATION	11/10/2020	GMA
	ADJUST BASE LOCATIONS	10/15/2020	GMA

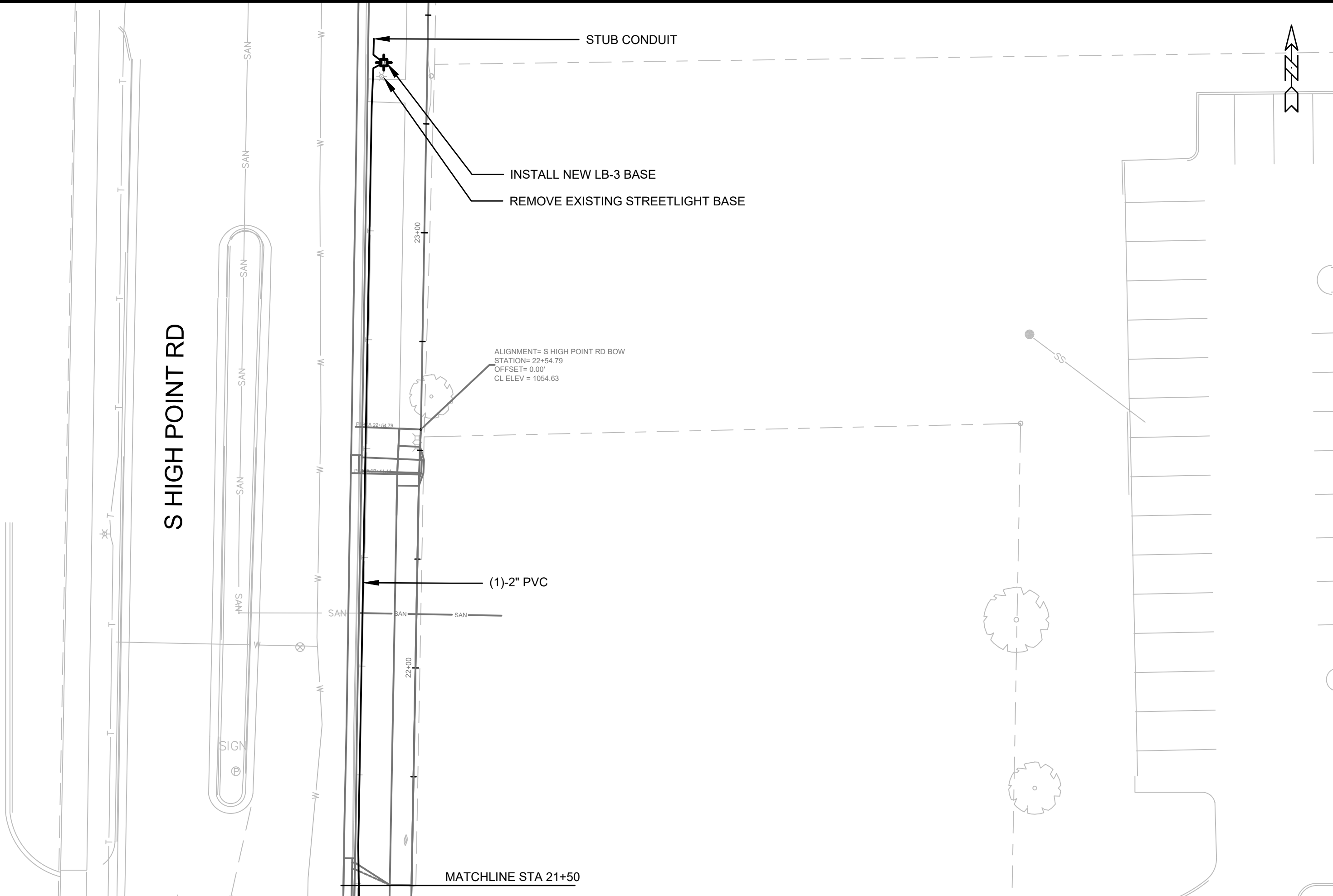
13028  
MADISON, WI  
8925  
CONTRACT NO:

ELECTRICAL PLAN  
7718 MINERAL POINT RD




13028  
E-1

# S HIGH POINT RD



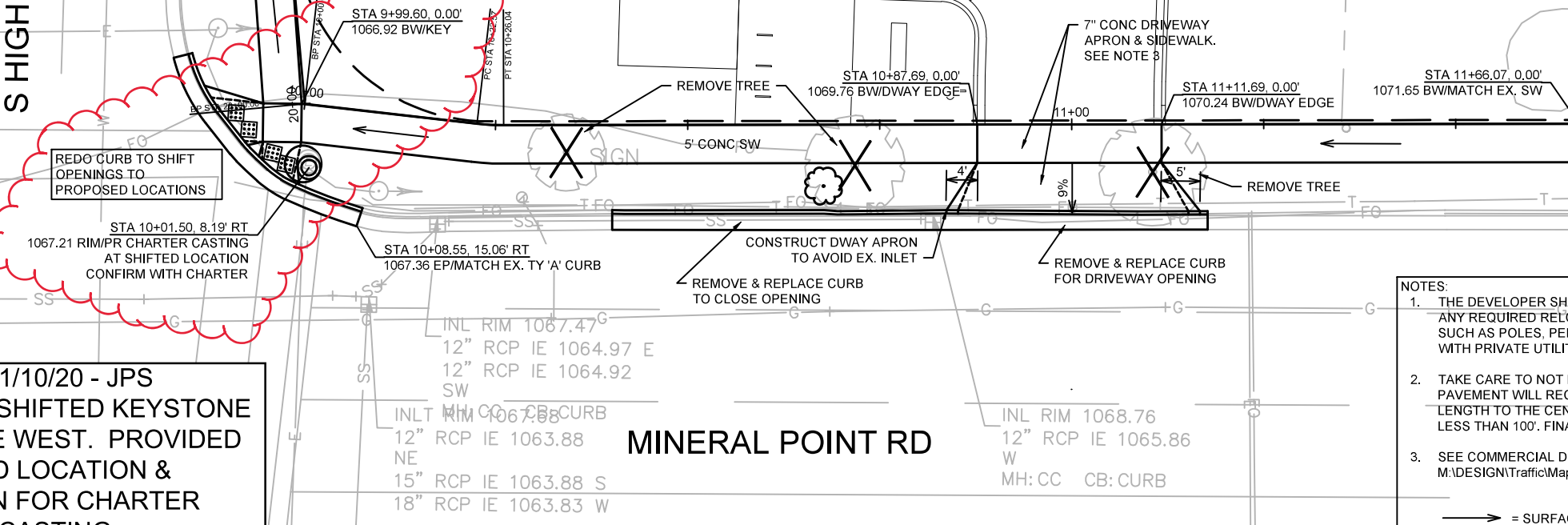
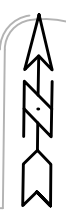
MATCHLINE STA 21+50

	13028	E-2
	7718 MINERAL POINT RD	
ELECTRICAL PLAN	13028	
M:\DESIGN\Projects\13028\CAD\Traffic\13028TE-Electrical.dwg	MADISON, WI	
	CONTRACT NO:	8925
	MARK	13028
	DESIGNED BY: GMA	DATE: 9/25/2020 3:07 PM
	REVISION	SCALE: 1" = 20'
		BT
		E-2

SCALE 1" = 20'

S HIGH POINT RD

LOT 1  
 PARCEL NO:  
 070823397602  
 7718 W MINERAL POINT RD  
 35,509 SQ. FT.  
 0.815 ACRES



REDO CURB TO SHIFT OPENINGS TO PROPOSED LOCATIONS

STA 10+01.50, 8.19' RT  
 1067.21 RIM/PR CHARTER CASTING AT SHIFTED LOCATION CONFIRM WITH CHARTER

STA 10+08.55, 15.06' RT  
 1067.36 EP/MATCH EX. TY 'A' CURB

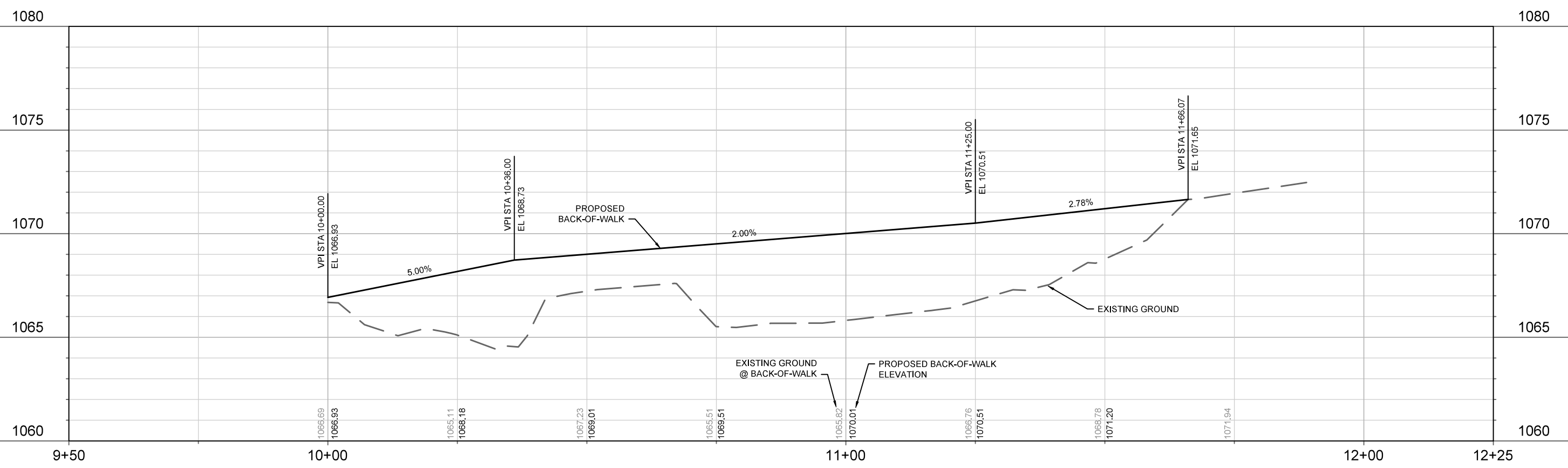
CONSTRUCT DWAY APRON TO AVOID EX. INLET

REMOVE & REPLACE CURB FOR DRIVEWAY OPENING

- NOTES:
1. THE DEVELOPER SHALL BE RESPONSIBLE FOR COORDINATING AND SCHEDULING ANY REQUIRED RELOCATION OR ADJUSTING OF PRIVATE UTILITY FACILITIES, SUCH AS POLES, PEDESTALS, BOXES, STRUCTURES, CASTINGS OR HANDHOLES, WITH PRIVATE UTILITY COMPANIES.
  2. TAKE CARE TO NOT DAMAGE PAVEMENT EDGE. ANY DAMAGE TO STREET PAVEMENT WILL REQUIRE A MILL AND OVERLAY FOR A MINIMUM OF 50' IN LENGTH TO THE CENTERLINE. GAPS BETWEEN MILL AND OVERLAY CANNOT BE LESS THAN 100'. FINAL LIMITS TO BE DETERMINED BY CONSTRUCTION ENGINEER.
  3. SEE COMMERCIAL DRIVEWAY PERMITS NO. LNDUSE-2020-00028, M:\DESIGN\Traffic\Maps\_Plan\Plan\ParkingLotPlans\TE\MM\Mineral Point Rd 7718
- = SURFACE DRAINAGE PATH

REVISED 11/10/20 - JPS  
 SLIGHTLY SHIFTED KEYSTONE 0.4' TO THE WEST. PROVIDED PROPOSED LOCATION & ELEVATION FOR CHARTER MANHOLE CASTING

MINERAL POINT RD



DATE	BY	SCALE
11/10/20	JPS	1" = 20'
10/15/20	AJC	
10/15/20	AJC	
REVISION	DATE	BY
11/12/2020	8:14 AM	JPS
DESIGNED BY	DATE	SCALE
AJC	11/12/2020	1" = 20'

13028  
 MADISON, WI  
 8925  
 CONTRACT NO:

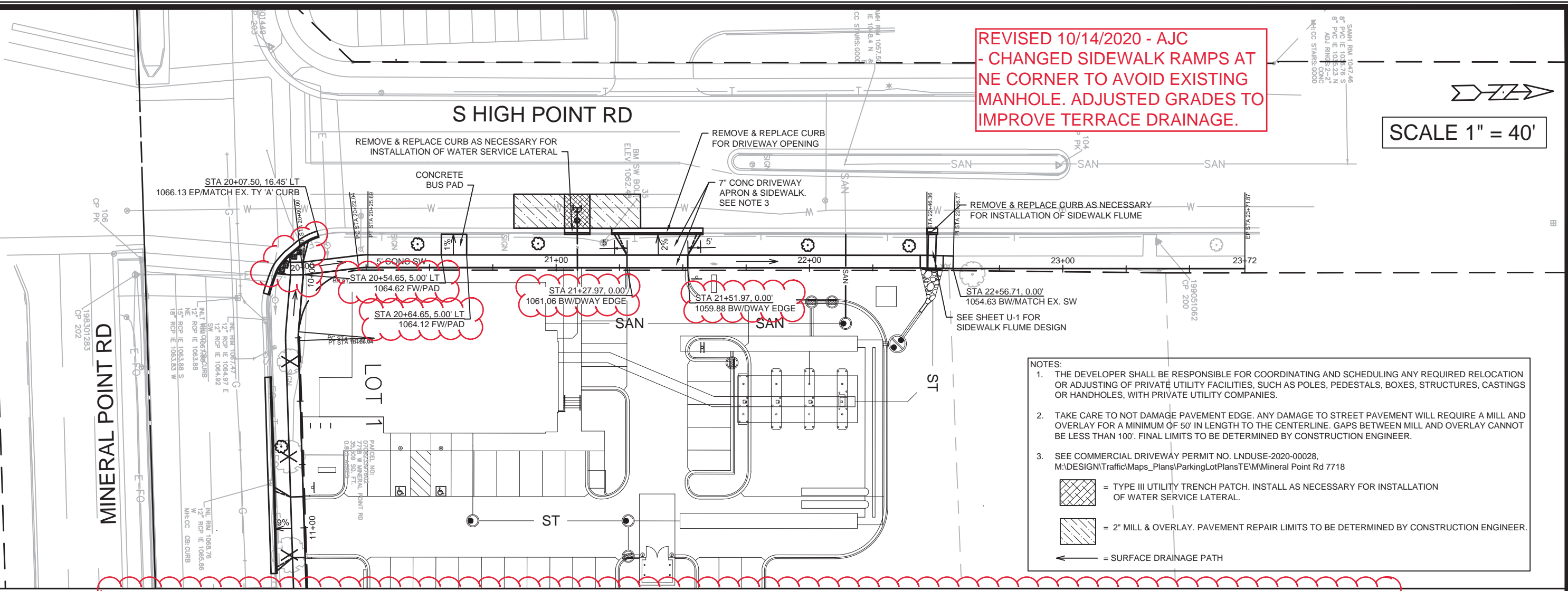
MINERAL POINT RD SIDEWALK - PLAN & PROFILE  
 7718 MINERAL POINT RD  
 M:\DESIGN\Projects\13028\CAD\Streets\13028EN-PnP.dwg



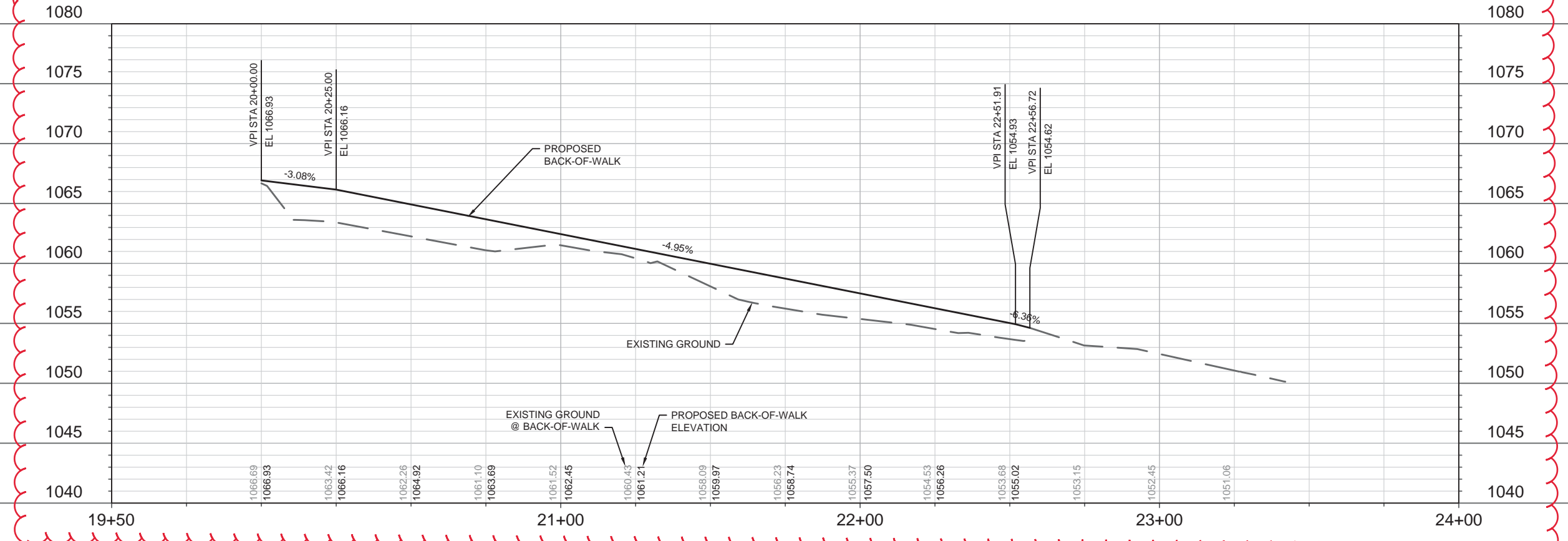
13028  
 P-1

REVISED 10/14/2020 - AJC  
 - CHANGED SIDEWALK RAMPS AT NE CORNER TO AVOID EXISTING MANHOLE. ADJUSTED GRADES TO IMPROVE TERRACE DRAINAGE.

SCALE 1" = 40'



- NOTES:
1. THE DEVELOPER SHALL BE RESPONSIBLE FOR COORDINATING AND SCHEDULING ANY REQUIRED RELOCATION OR ADJUSTING OF PRIVATE UTILITY FACILITIES, SUCH AS POLES, PEDESTALS, BOXES, STRUCTURES, CASTINGS OR HANDHOLES, WITH PRIVATE UTILITY COMPANIES.
  2. TAKE CARE TO NOT DAMAGE PAVEMENT EDGE. ANY DAMAGE TO STREET PAVEMENT WILL REQUIRE A MILL AND OVERLAY FOR A MINIMUM OF 50' IN LENGTH TO THE CENTERLINE. GAPS BETWEEN MILL AND OVERLAY CANNOT BE LESS THAN 100'. FINAL LIMITS TO BE DETERMINED BY CONSTRUCTION ENGINEER.
  3. SEE COMMERCIAL DRIVEWAY PERMIT NO. LNDUSE-2020-00028, M:\DESIGN\Traffic\Maps\_Plans\ParkingLotPlans\TEMM\Mineral Point Rd 7718
- = TYPE III UTILITY TRENCH PATCH. INSTALL AS NECESSARY FOR INSTALLATION OF WATER SERVICE LATERAL.
  - = 2" MILL & OVERLAY. PAVEMENT REPAIR LIMITS TO BE DETERMINED BY CONSTRUCTION ENGINEER.
  - = SURFACE DRAINAGE PATH



DATE	BY	Scale: 1" = 40' P-2
REVISION		
MARK	13028	
Designed By: AJC		
Date: 10/14/2020 2:09 PM		

13028  
MADISON, WI  
CONTRACT NO: 8925

S HIGH POINT RD SIDEWALK - PLAN & PROFILE  
 7718 MINERAL POINT RD  
 M:\DESIGN\Projects\13028\CAD\Streets\13028EN-PnP.dwg



13028  
P-2

SCALE 1" = 40'

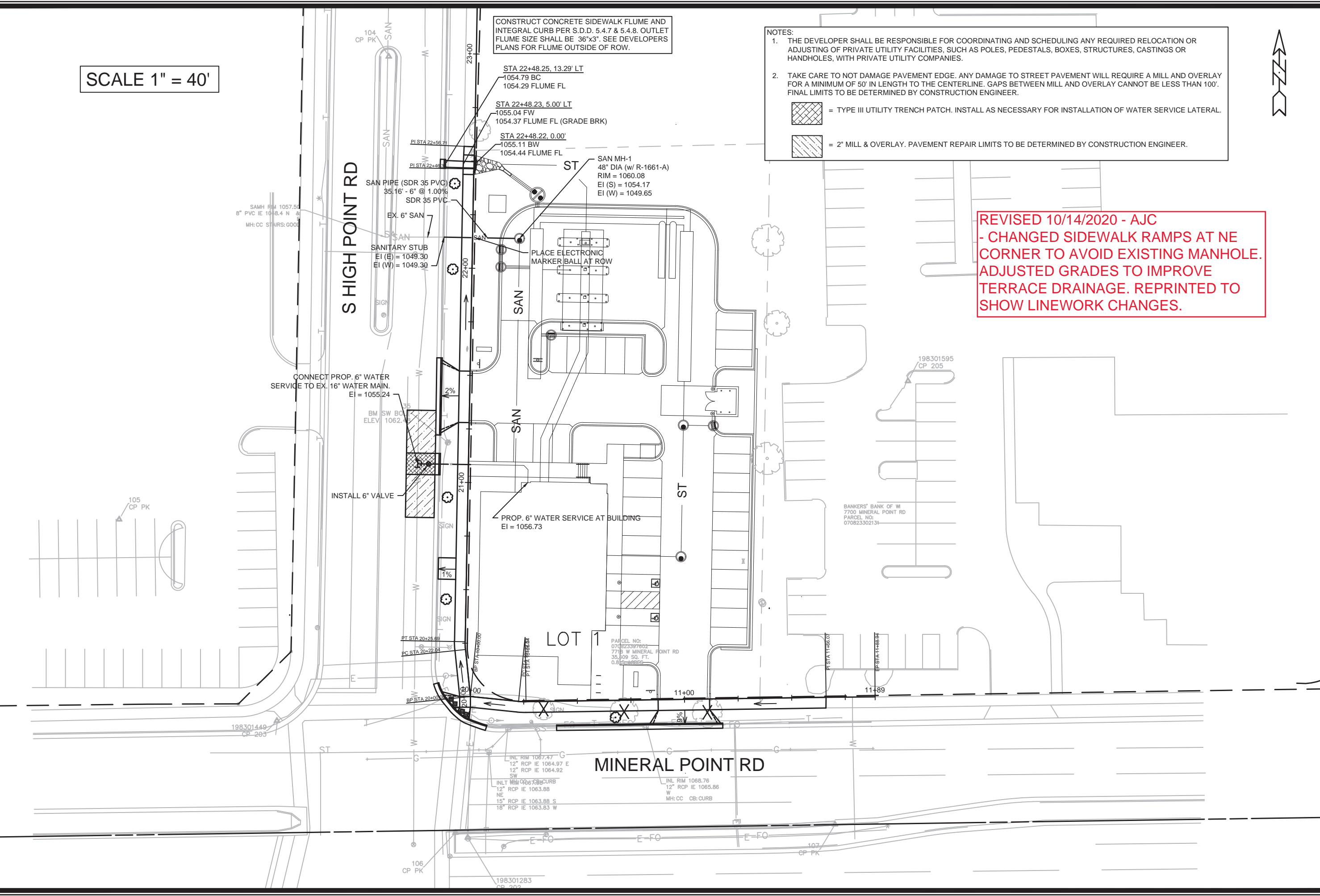
CONSTRUCT CONCRETE SIDEWALK FLUME AND INTEGRAL CURB PER S.D.D. 5.4.7 & 5.4.8. OUTLET FLUME SIZE SHALL BE 36"x3". SEE DEVELOPERS PLANS FOR FLUME OUTSIDE OF ROW.

NOTES:

- THE DEVELOPER SHALL BE RESPONSIBLE FOR COORDINATING AND SCHEDULING ANY REQUIRED RELOCATION OR ADJUSTING OF PRIVATE UTILITY FACILITIES, SUCH AS POLES, PEDESTALS, BOXES, STRUCTURES, CASTINGS OR HANDHOLES, WITH PRIVATE UTILITY COMPANIES.
- TAKE CARE TO NOT DAMAGE PAVEMENT EDGE. ANY DAMAGE TO STREET PAVEMENT WILL REQUIRE A MILL AND OVERLAY FOR A MINIMUM OF 50' IN LENGTH TO THE CENTERLINE. GAPS BETWEEN MILL AND OVERLAY CANNOT BE LESS THAN 100'. FINAL LIMITS TO BE DETERMINED BY CONSTRUCTION ENGINEER.

 = TYPE III UTILITY TRENCH PATCH. INSTALL AS NECESSARY FOR INSTALLATION OF WATER SERVICE LATERAL.  
 = 2" MILL & OVERLAY. PAVEMENT REPAIR LIMITS TO BE DETERMINED BY CONSTRUCTION ENGINEER.

REVISED 10/14/2020 - AJC  
- CHANGED SIDEWALK RAMPS AT NE CORNER TO AVOID EXISTING MANHOLE. ADJUSTED GRADES TO IMPROVE TERRACE DRAINAGE. REPRINTED TO SHOW LINework CHANGES.



MARK	REVISION	DATE	BY

13028  
MADISON, WI  
8925  
CONTRACT NO:

UTILITY PLAN  
7718 MINERAL POINT RD  
M:\DESIGN\Projects\13028\CAD\Streets\13028EN-PnP.dwg



13028  
U-1

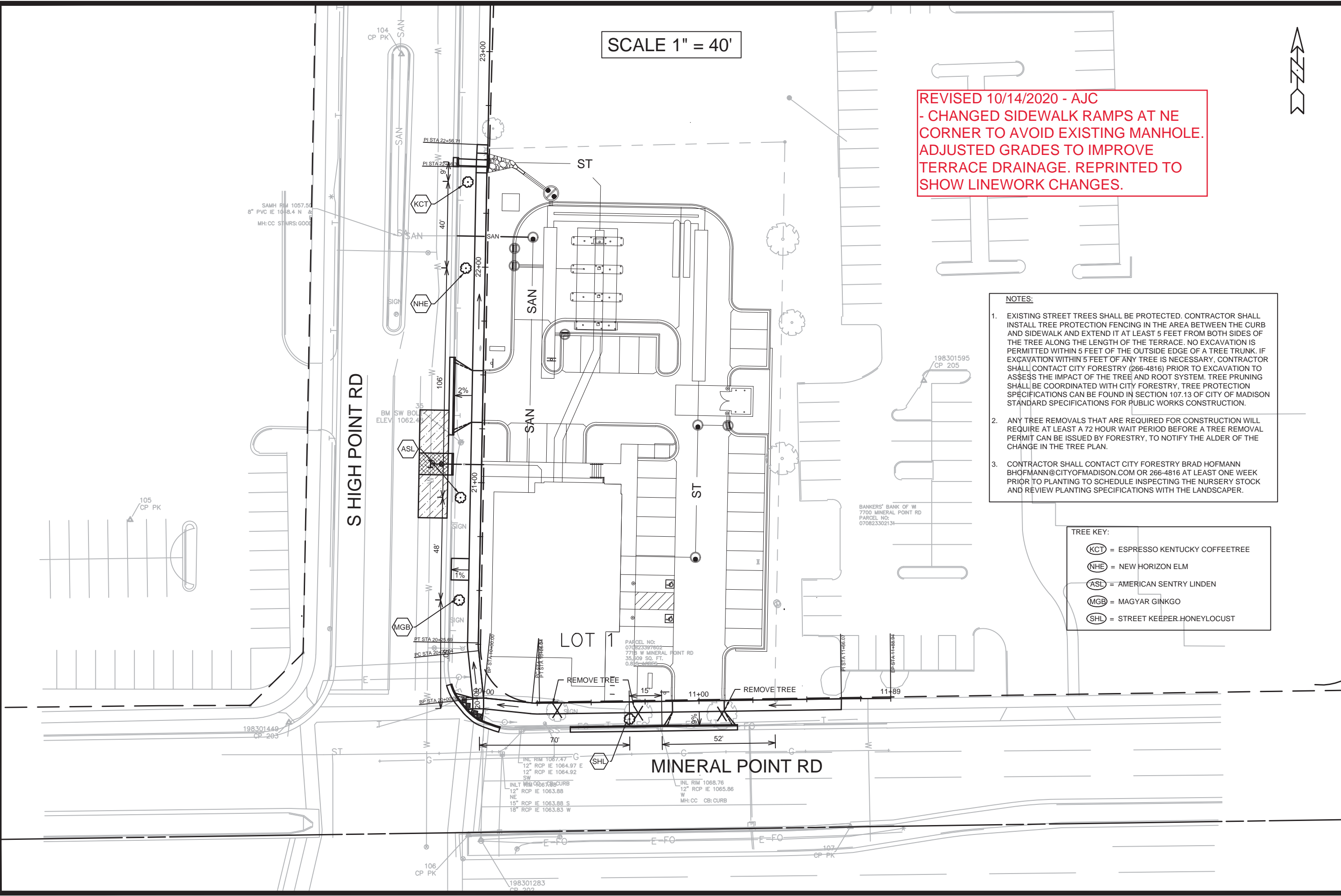


SCALE 1" = 40'

REVISED 10/14/2020 - AJC  
 - CHANGED SIDEWALK RAMPS AT NE CORNER TO AVOID EXISTING MANHOLE.  
 ADJUSTED GRADES TO IMPROVE TERRACE DRAINAGE. REPRINTED TO SHOW LINEWORK CHANGES.

- NOTES:**
- EXISTING STREET TREES SHALL BE PROTECTED. CONTRACTOR SHALL INSTALL TREE PROTECTION FENCING IN THE AREA BETWEEN THE CURB AND SIDEWALK AND EXTEND IT AT LEAST 5 FEET FROM BOTH SIDES OF THE TREE ALONG THE LENGTH OF THE TERRACE. NO EXCAVATION IS PERMITTED WITHIN 5 FEET OF THE OUTSIDE EDGE OF A TREE TRUNK. IF EXCAVATION WITHIN 5 FEET OF ANY TREE IS NECESSARY, CONTRACTOR SHALL CONTACT CITY FORESTRY (266-4816) PRIOR TO EXCAVATION TO ASSESS THE IMPACT OF THE TREE AND ROOT SYSTEM. TREE PRUNING SHALL BE COORDINATED WITH CITY FORESTRY, TREE PROTECTION SPECIFICATIONS CAN BE FOUND IN SECTION 107.13 OF CITY OF MADISON STANDARD SPECIFICATIONS FOR PUBLIC WORKS CONSTRUCTION.
  - ANY TREE REMOVALS THAT ARE REQUIRED FOR CONSTRUCTION WILL REQUIRE AT LEAST A 72 HOUR WAIT PERIOD BEFORE A TREE REMOVAL PERMIT CAN BE ISSUED BY FORESTRY, TO NOTIFY THE ALDER OF THE CHANGE IN THE TREE PLAN.
  - CONTRACTOR SHALL CONTACT CITY FORESTRY BRAD HOFMANN BHOFMANN@CITYOFMADISON.COM OR 266-4816 AT LEAST ONE WEEK PRIOR TO PLANTING TO SCHEDULE INSPECTING THE NURSERY STOCK AND REVIEW PLANTING SPECIFICATIONS WITH THE LANDSCAPER.

- TREE KEY:**
- (KCT) = ESPRESSO KENTUCKY COFFEETREE
  - (NHE) = NEW HORIZON ELM
  - (ASL) = AMERICAN SENTRY LINDEN
  - (MGB) = MAGYAR GINKGO
  - (SHL) = STREET KEEPER HONEYLOCUST



MARK	REVISION	DATE	BY

13028  
 MADISON, WI  
 8925  
 CONTRACT NO:

LANDSCAPING PLAN  
 7718 MINERAL POINT RD  
 M:\DESIGN\Projects\13028\CAD\Streets\13028EN-PnP.dwg

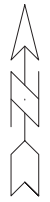


13028  
 L-1

REVISED 10/14/2020 - AJC  
 - CHANGED SIDEWALK RAMPS AT NE CORNER TO AVOID EXISTING MANHOLE.  
 ADJUSTED GRADES TO IMPROVE TERRACE DRAINAGE. REPRINTED TO SHOW LINEWORK CHANGES.

NOT FOR CONSTRUCTION -  
 CITY RECORDS ONLY

SCALE: 1" = 40'

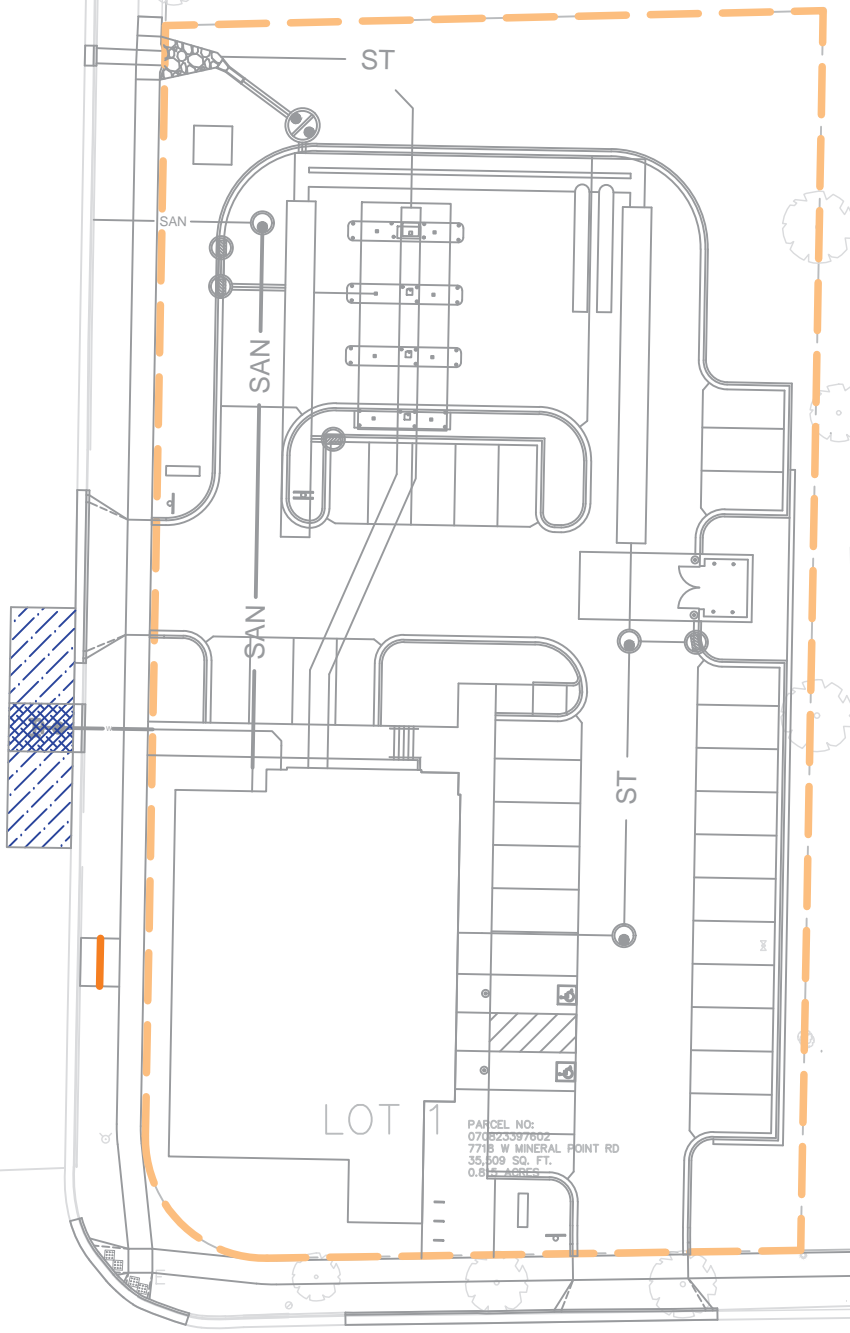


**MAINTENANCE LEGEND:**

- = TERRACE REQUIRES MOWING BY CITY
- = SIDEWALK AND BIKE PATHS REQUIRE SNOW REMOVAL BY CITY
- = BUS STOP PAD REQUIRES SNOW REMOVAL BY CITY
- = CROSSWALK OR CONCRETE WATERWAY REQUIRE SNOW REMOVAL BY CITY
- = PRIVATELY MAINTAINED (MEDIANS, ISLAND, ROUNDABOUTS & PRIVATE OUTLOTS)
- = PUBLIC CITY ENGINEERING STORMWATER PROPERTY
- = PUBLIC CITY PARK PROPERTY
- = PRIVATE OUTLOT
- = PHASE BOUNDARY

S HIGH POINT RD

MINERAL POINT RD



BANKERS' BANK OF WI  
 7700 MINERAL POINT RD  
 PARCEL NO:  
 070823302131

LOT 1  
 PARCEL NO:  
 070823307802  
 7718 W MINERAL POINT RD  
 35,609 SQ. FT.  
 0.81 ACRES

MARK	REVISION	DATE	BY
13028	13028	10/14/2020 2:09 PM	AJC

13028  
 MADISON, WI  
 8925  
 CONTRACT NO:

MAINTENANCE MAP  
 7718 MINERAL POINT RD  
 M:\DESIGN\Projects\13028\CAD\Streets\13028EN-Maintenance.dwg



13028  
 MN-1